



Dual Induction Log

DIGITAL LOG (785) 625-3858

API No.	15-165-21858-00-00	
Company	American Warrior, Inc.	
Well	Thompson-Schadel Unit No. 1	
Field	Schadel	
County	Rush	State
		Kansas
Location	2556' FNL & 2050' FWL	
Sec: 31	Twp: 19 S	Rge: 20 W
Permanent Datum	Ground level	Elevation 2266
Log Measured From	Kelly Bushing	6 Ft. Above Perm. Datum
Drilling Measured From	Kelly Bushing	K.B. 2272
		D.F. 2266
		G.L. 2266
		Other Services CNL/CDL

Date	7/6/2010
Run Number	One
Depth Driller	4392
Depth Logger	4389
Bottom Logged Interval	4388
Top Log Interval	200
Casing Driller	8.625 @ 224
Casing Logger	214
Bit Size	7.875
Type Fluid in Hole	Chemical
Salinity, ppm CL	3200
Density / Viscosity	9.1 55
pH / Fluid Loss	10.0 9.2
Source of Sample	Flowline
Rm @ Meas. Temp	1.20 @ 75
Rmf @ Meas. Temp	0.90 @ 75
Rmc @ Meas. Temp	1.62 @ 75
Source of Rmf / Rmc	Charts
Rm @ BHT	0.75 @ 120
Operating Rig Time	2 Hours
Max Rec. Temp. F	120
Equipment Number	15
Location	Hays
Recorded By	B. Becker
Witnessed By	Jason Alm

<<< Fold Here >>>

All interpretations are opinions based on inferences from electrical or other measurements and we cannot and do not guarantee the accuracy or correctness of any interpretation, and we shall not, except in the case of gross or willful negligence on our part, be liable or responsible for any loss, costs, damages, or expenses incurred or sustained by anyone resulting from any interpretation made by any of our officers, agents or employees. These interpretations are also subject to our general terms and conditions set out in our current Price Schedule.

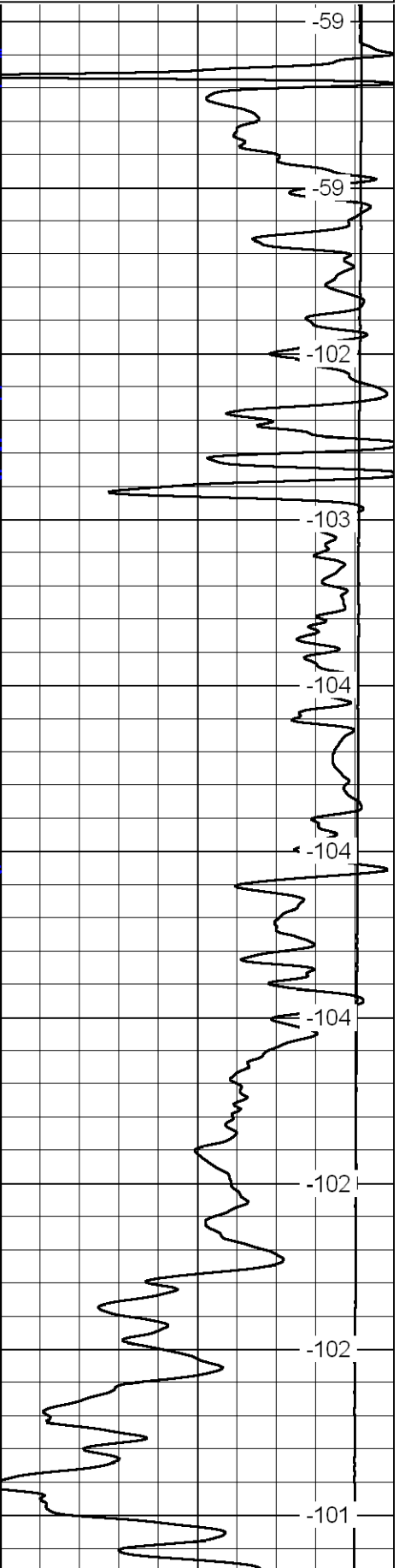
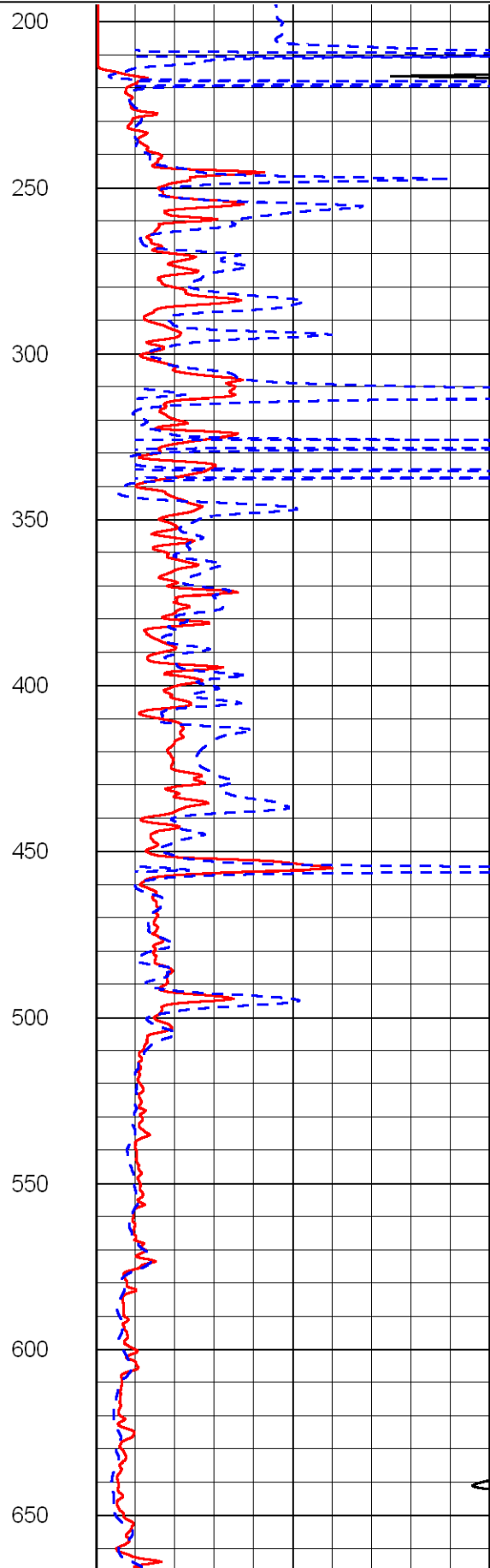
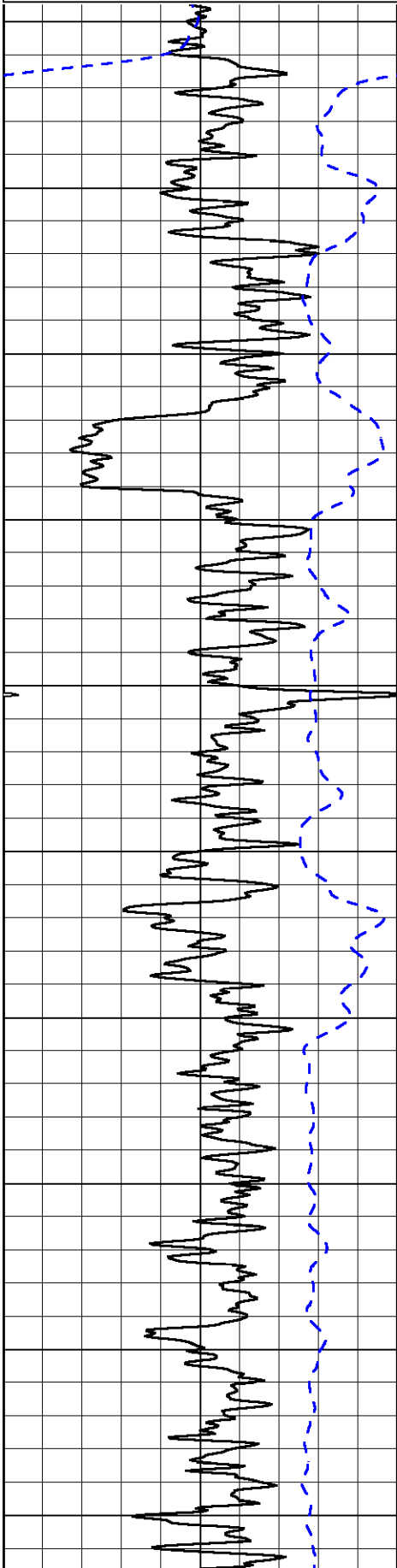
Comments

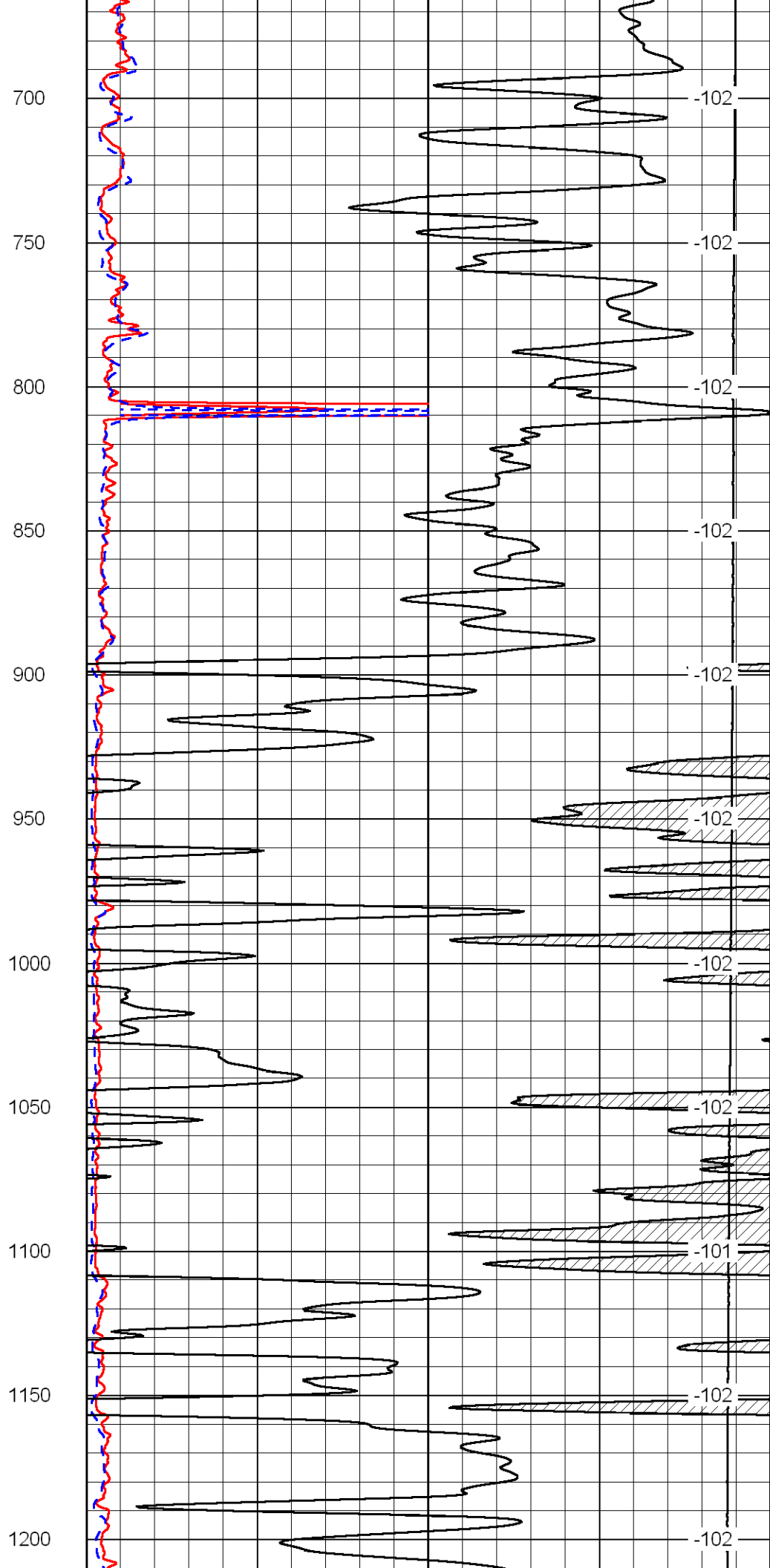
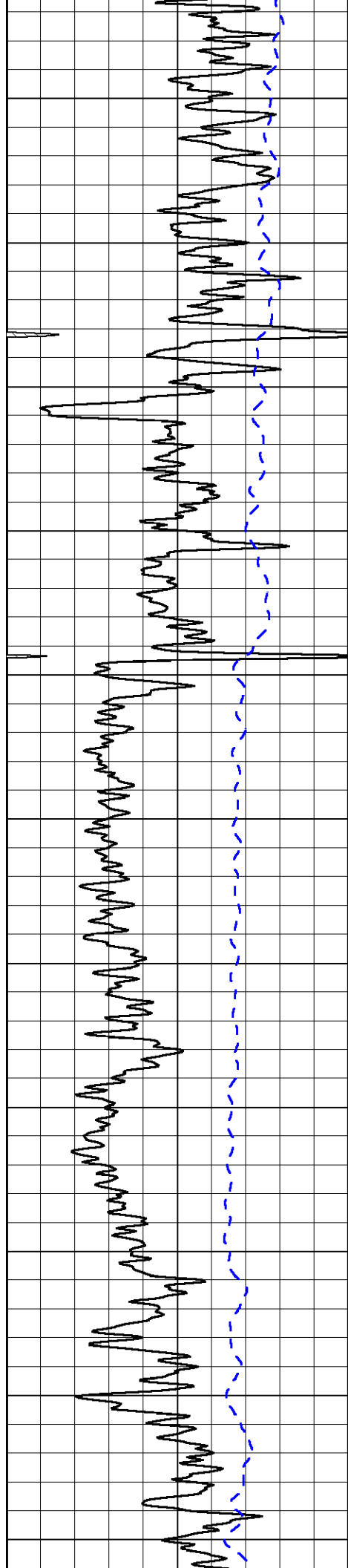
Thank you for using Log-Tech, Inc.
 (785) 625-3858
 Alexander, Ks;
 7 South to Ave X;
 1-1/2 West; South Into (at tank batteries)

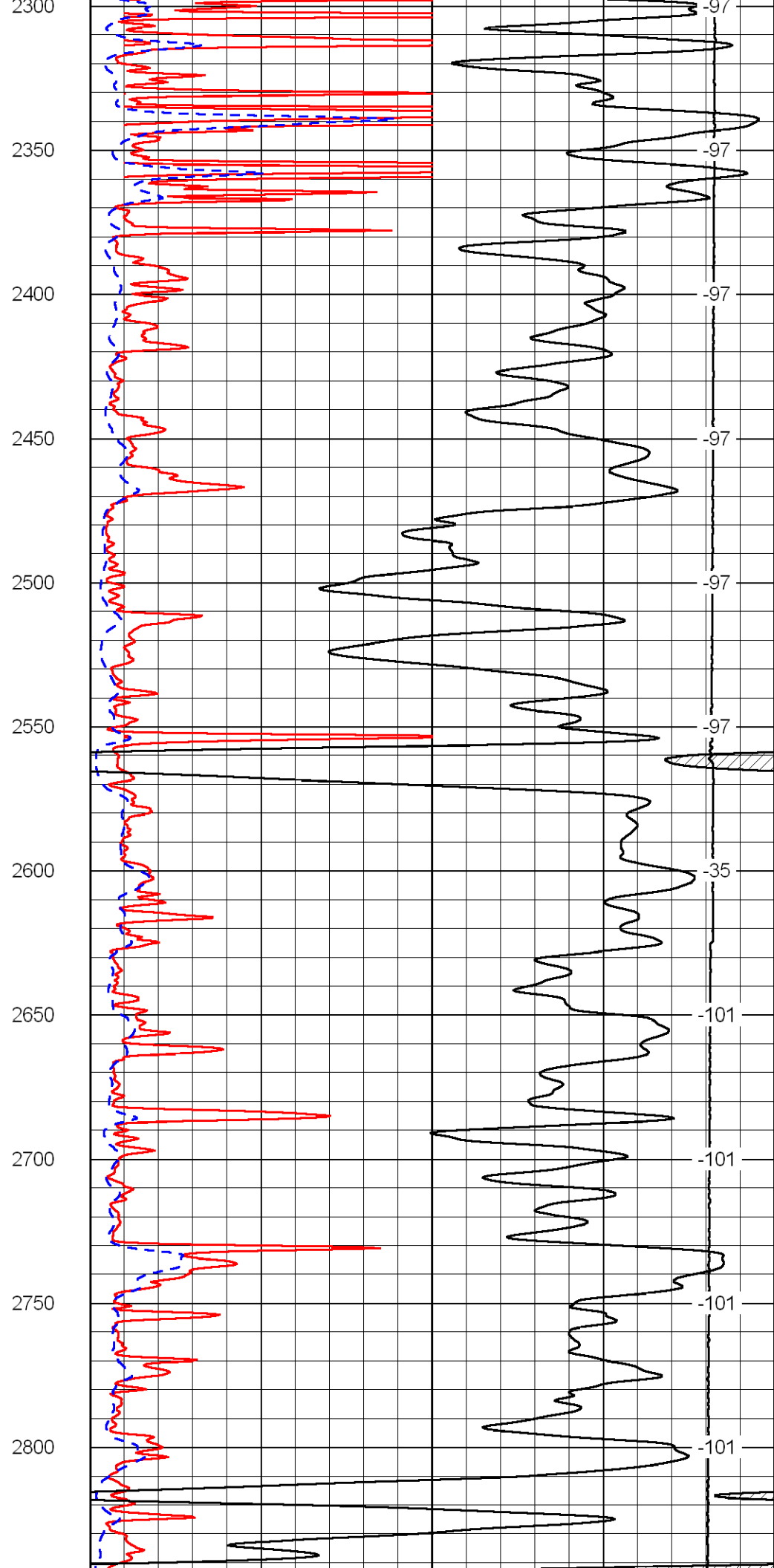
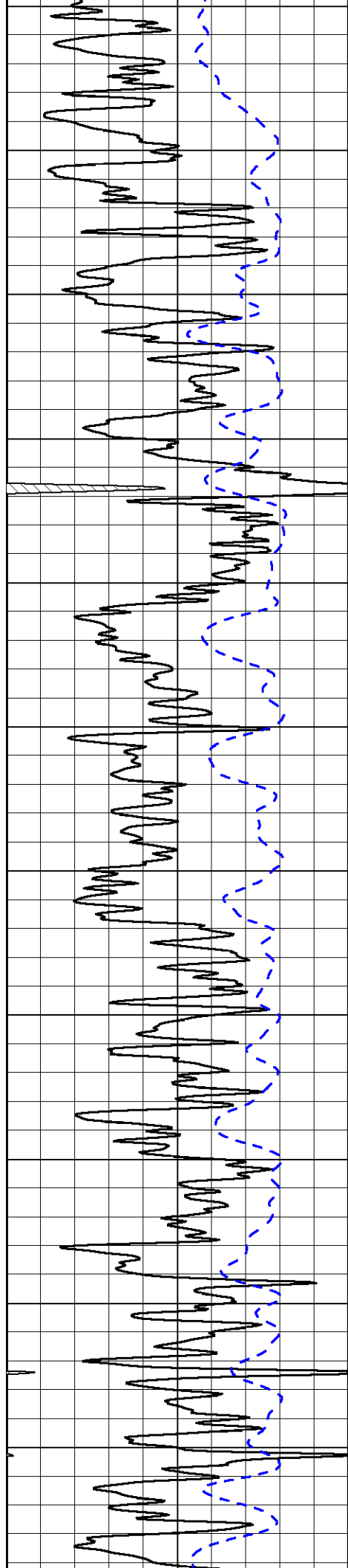
Database File: awhd.db
 Dataset Pathname: DIL/awstk3
 Presentation Format: dil2in
 Dataset Creation: Tue Jul 06 09:58:46 2010
 Charted by: Depth in Feet scaled 1:600

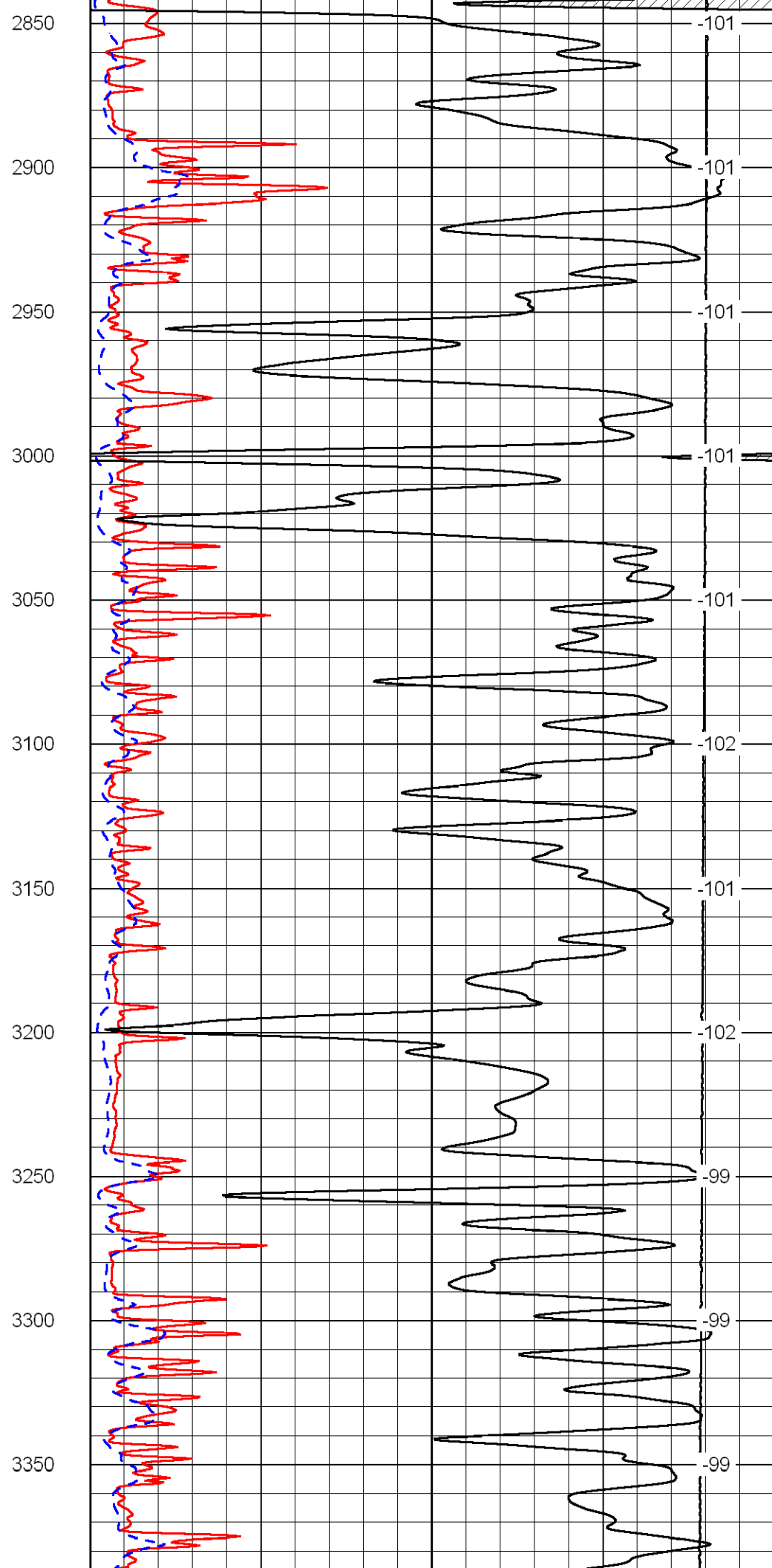
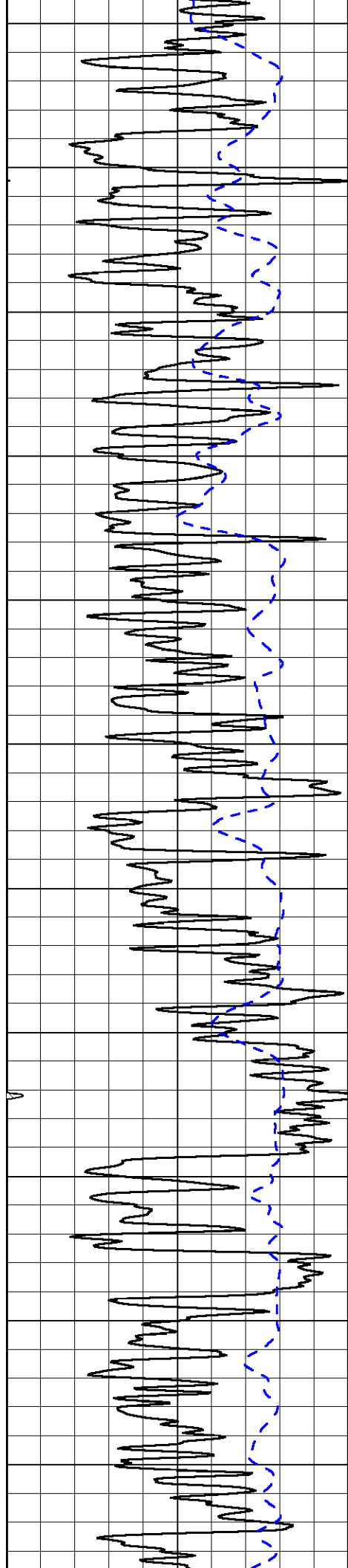
0	Gamma Ray	150
-200	SP	0

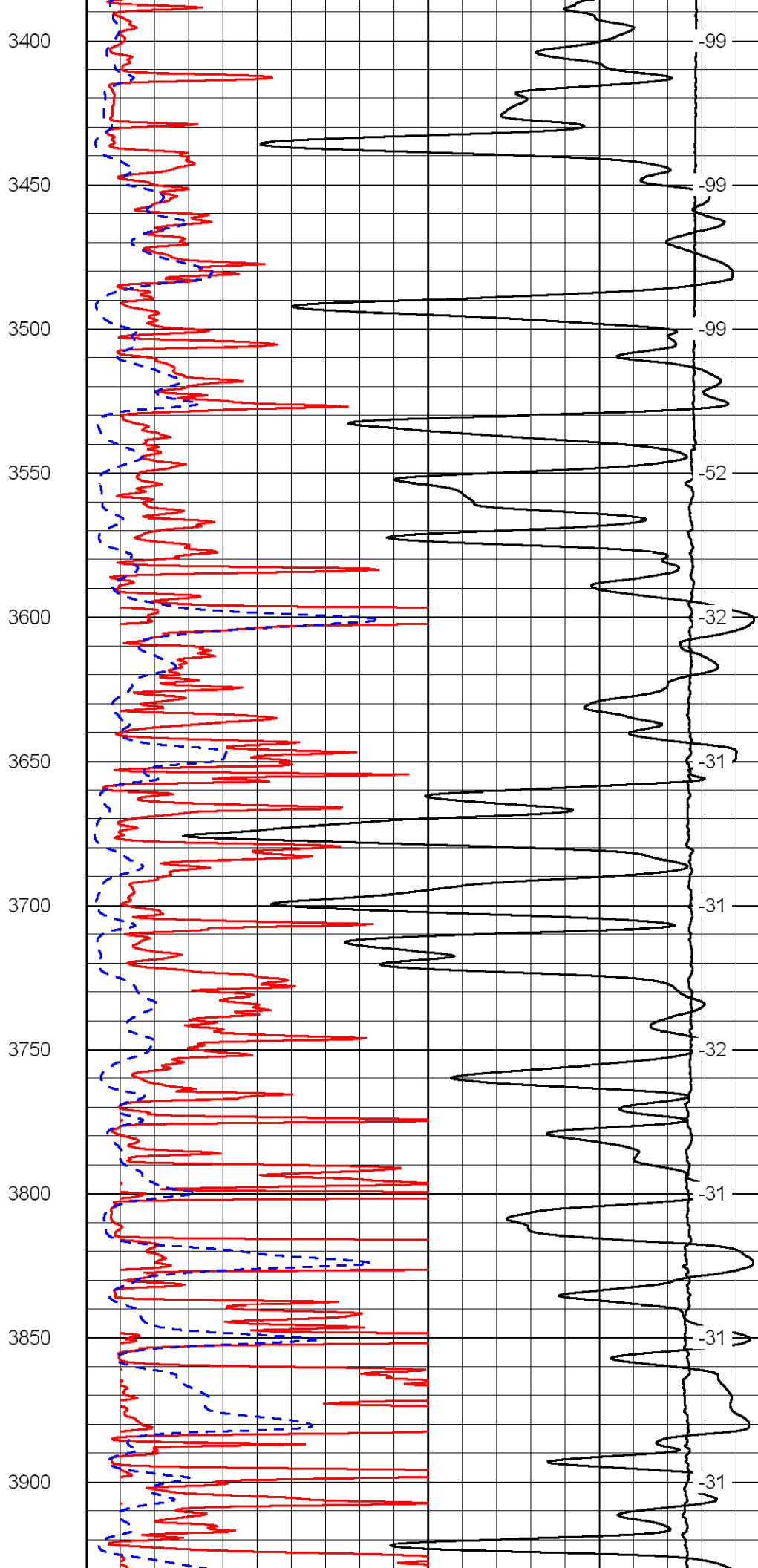
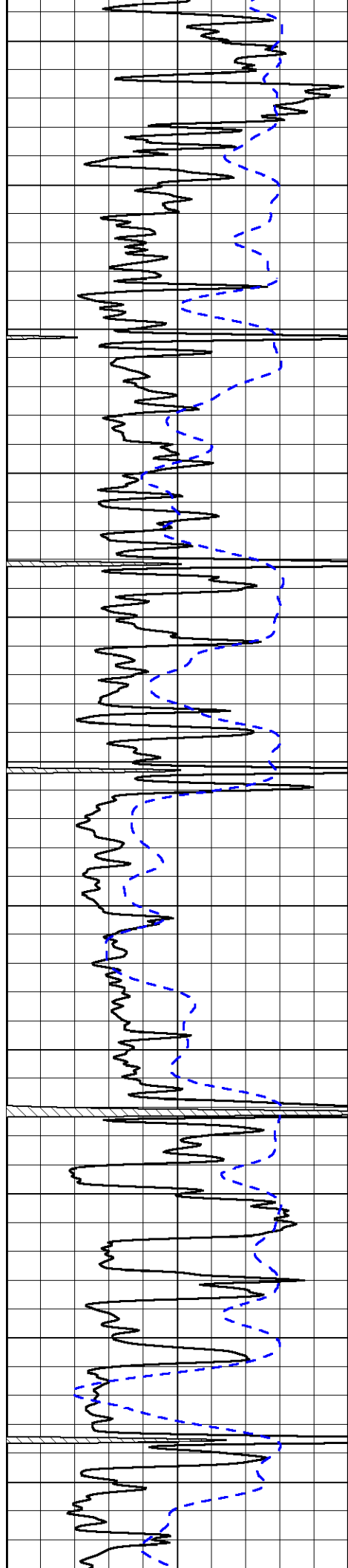
0	Shallow Resistivity	50
0	Deep Resistivity	50
1000	Conductivity	0
15000	Line Tension	0
50	Shallow Resistivity	500
50	Deep Resistivity	500

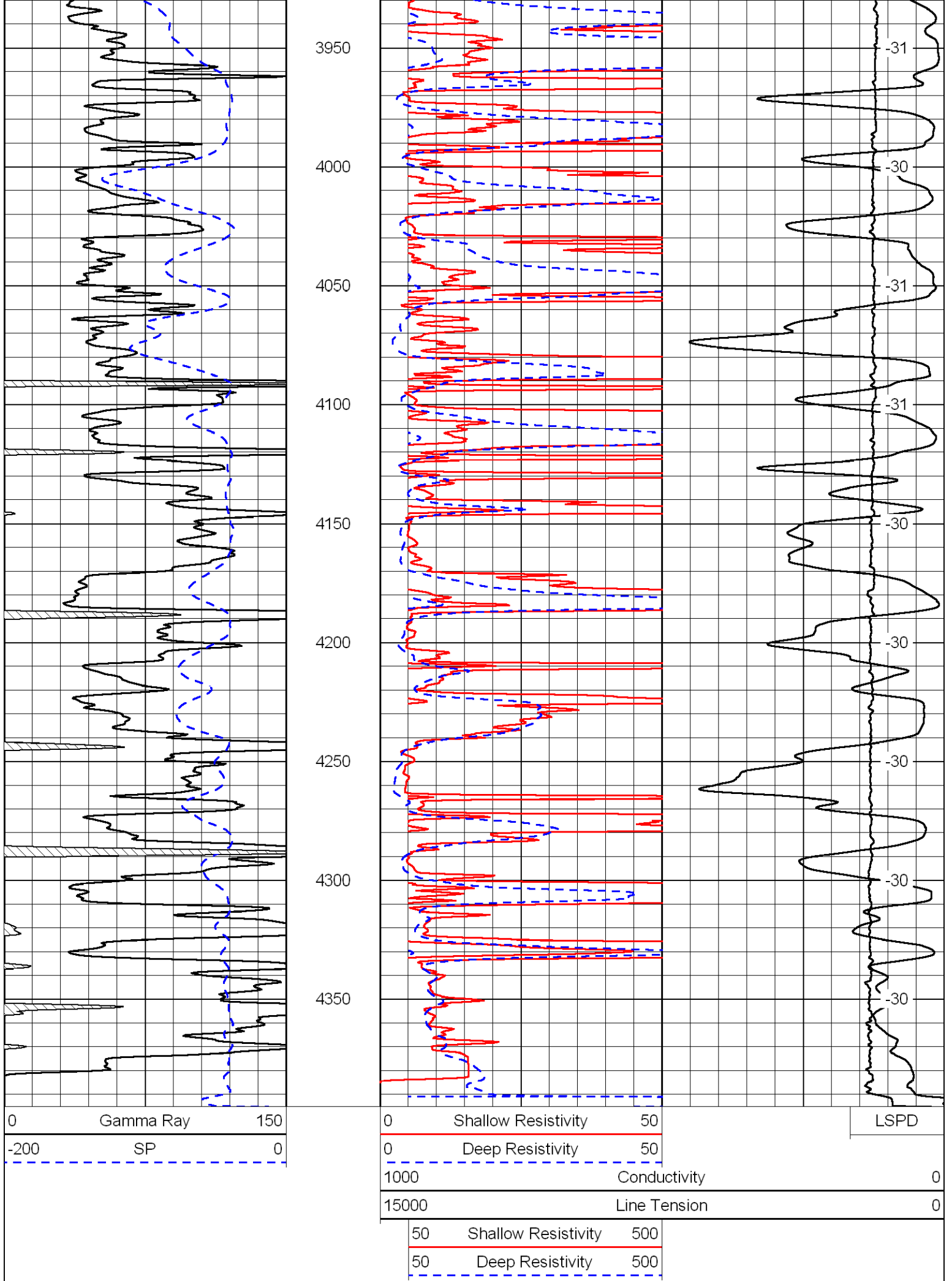










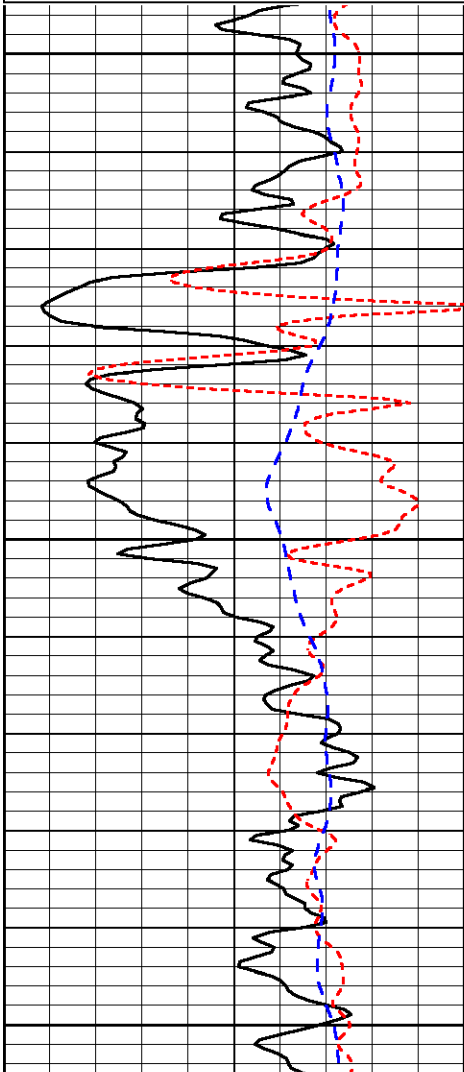


Database File: awhd.db
 Dataset Pathname: DIL/awstk3
 Presentation Format: dil
 Dataset Creation: Tue Jul 06 09:58:46 2010
 Charted by: Depth in Feet scaled 1:240

0	Gamma Ray	150
-160	RXO/RT	40
-200	SP	0

0.2	Deep Resistivity	2000
0.2	Medium Resistivity	2000
0.2	Shallow Resistivity	2000
10000	Line Tension	0

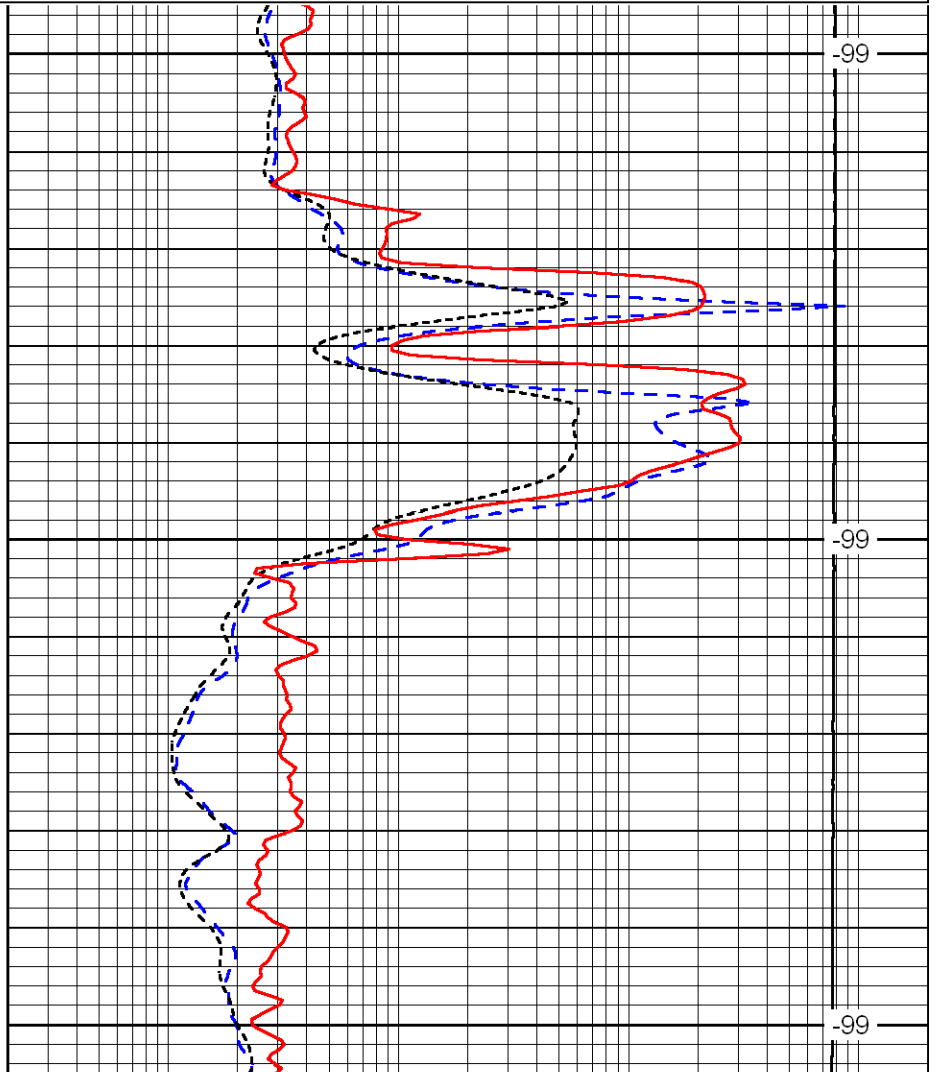
LSPD



1450

1500

1550



-99

-99

-99

0	Gamma Ray	150
-160	RXO/RT	40
-200	SP	0

0.2	Deep Resistivity	2000
0.2	Medium Resistivity	2000
0.2	Shallow Resistivity	2000
10000	Line Tension	0

LSPD

Database File: awhd.db
 Dataset Pathname: DIL/awstk3
 Presentation Format: dil
 Dataset Creation: Tue Jul 06 09:58:46 2010
 Charted by: Depth in Feet scaled 1:240

0	Gamma Ray	150
-160	RXO/RT	40

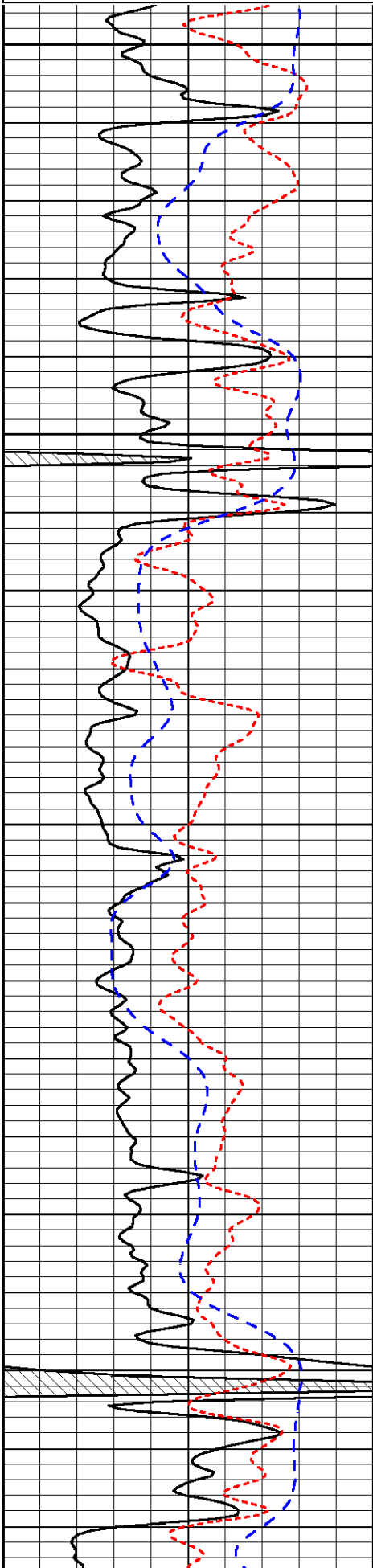
0.2	Deep Resistivity	2000
0.2	Medium Resistivity	2000

-200 SP 0

0.2 Shallow Resistivity 2000

10000 Line Tension 0

LSPD

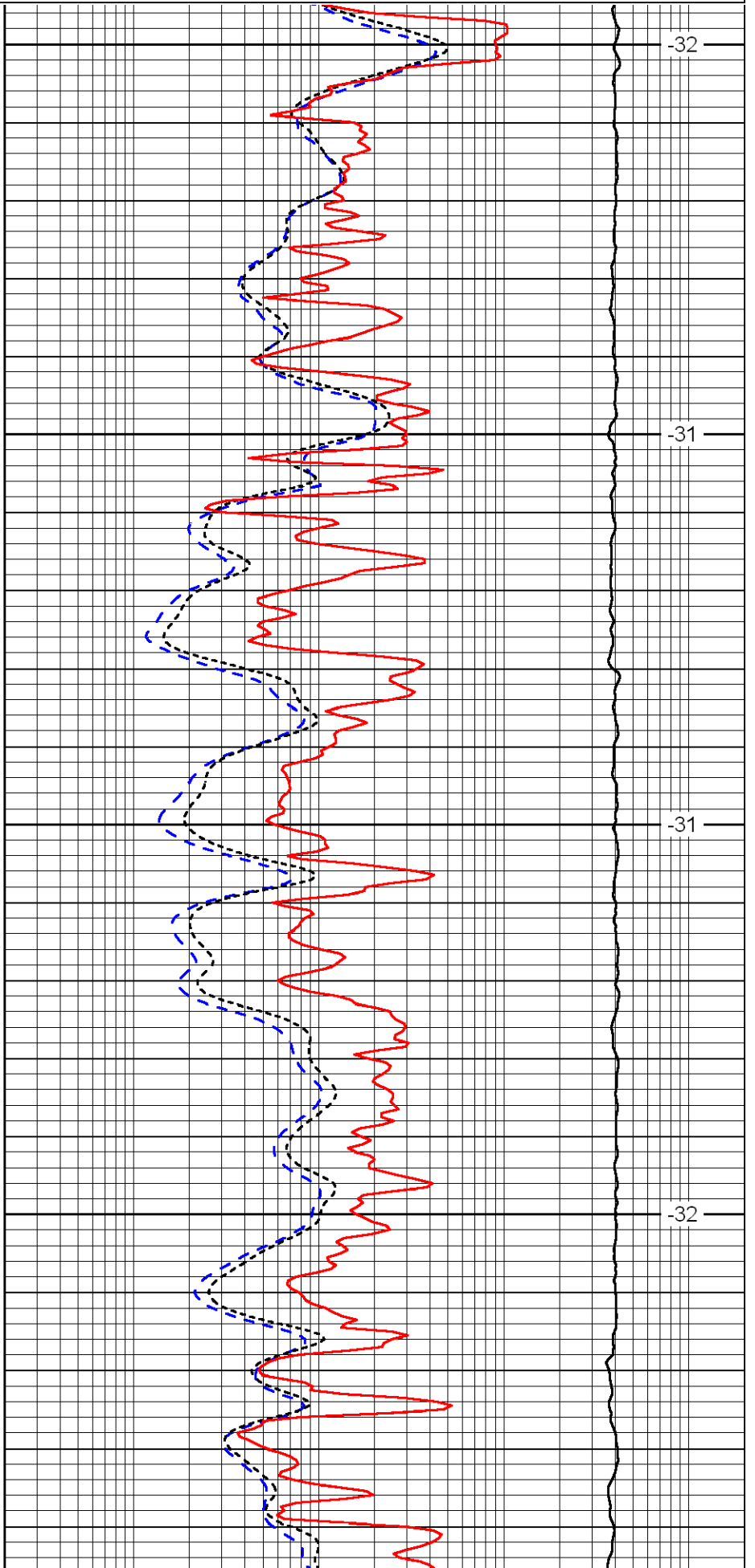


3600

3650

3700

3750

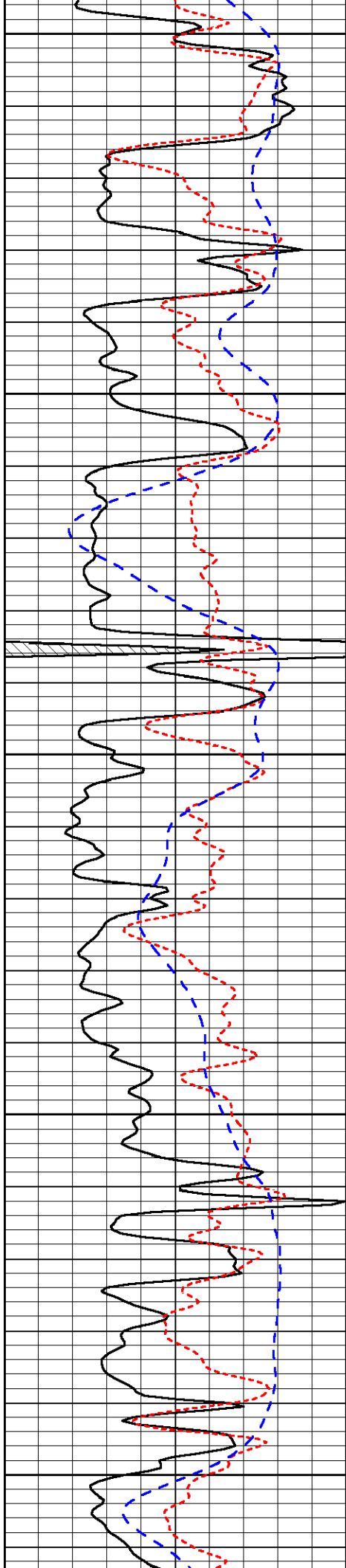


-32

-31

-31

-32



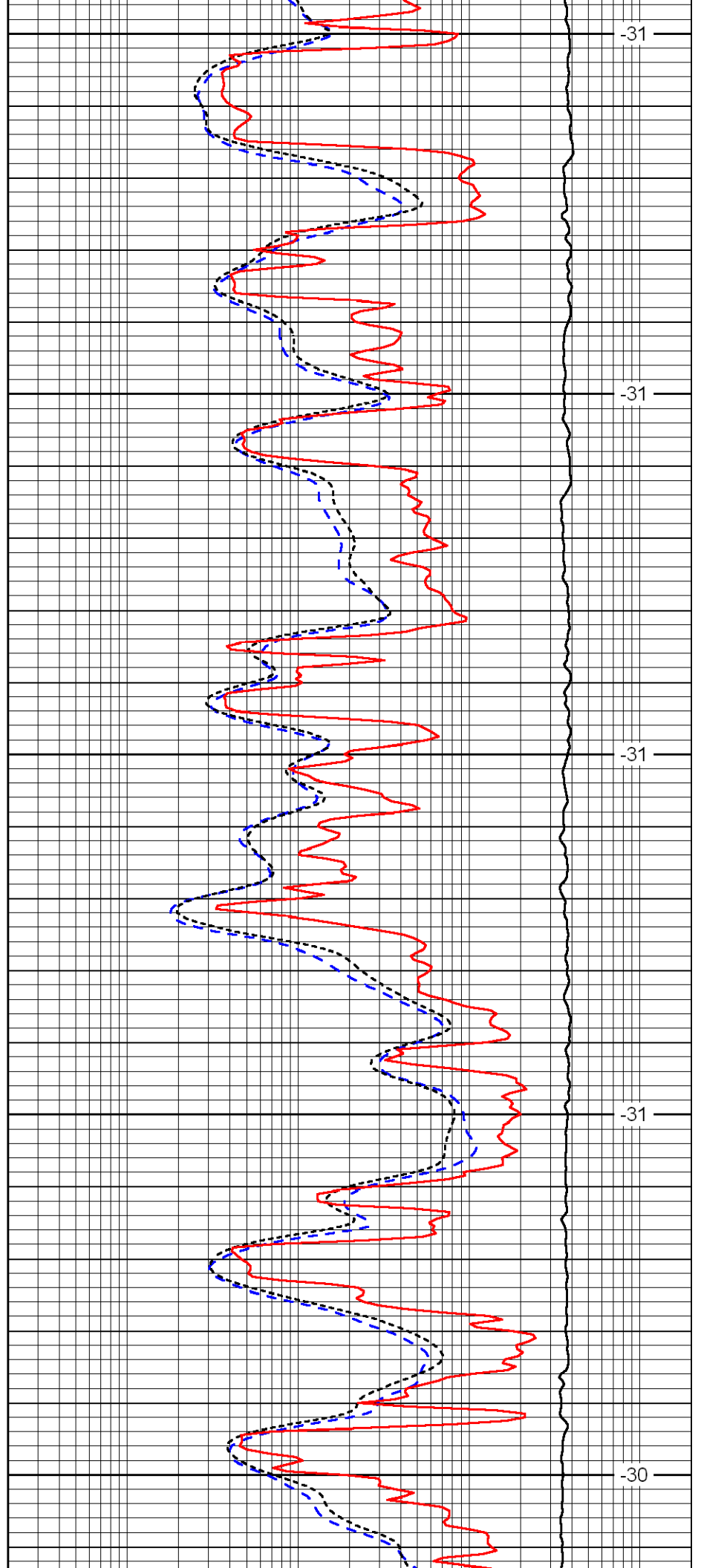
3800

3850

3900

3950

4000



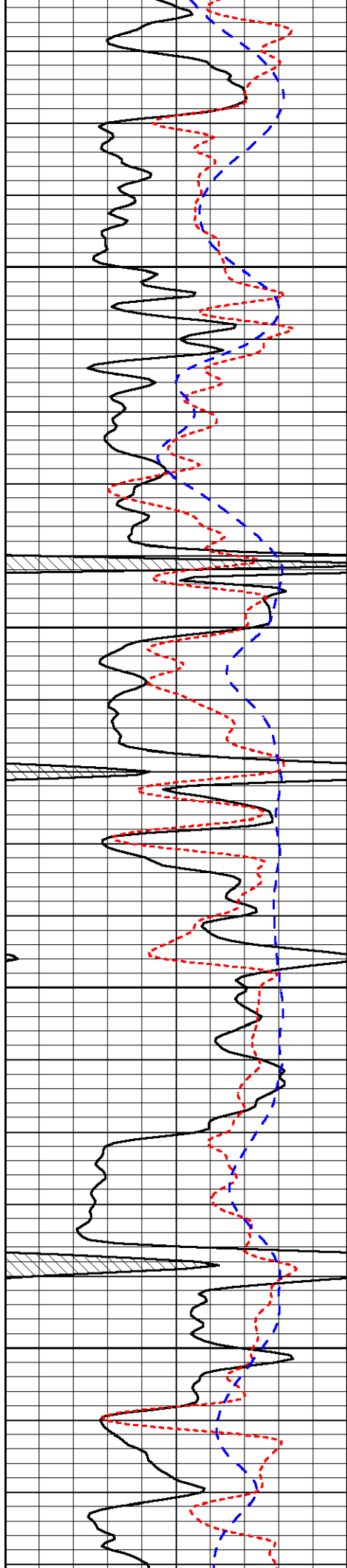
-31

-31

-31

-31

-30

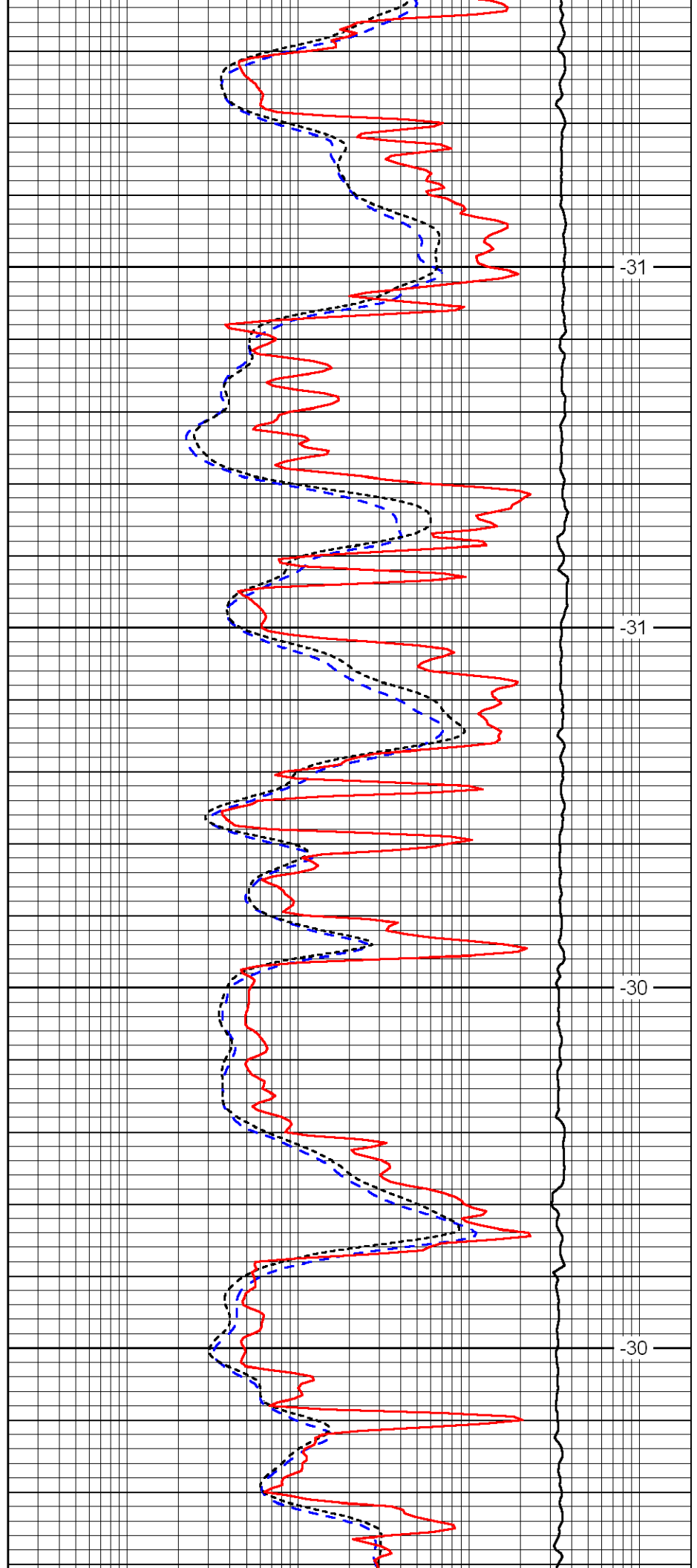


4050

4100

4150

4200

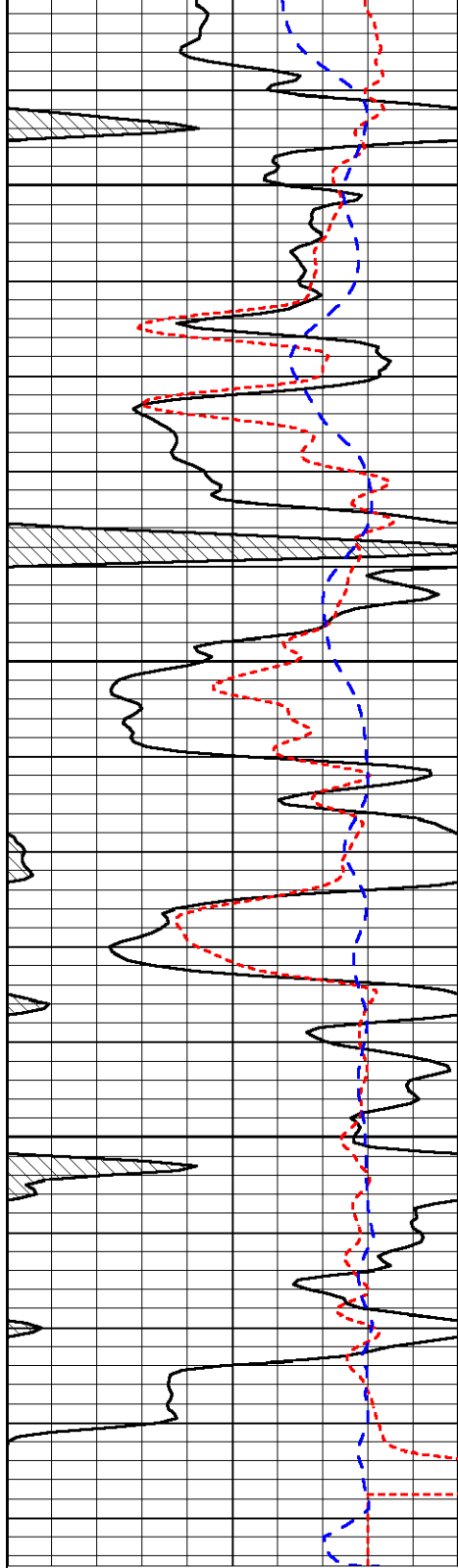


-31

-31

-30

-30

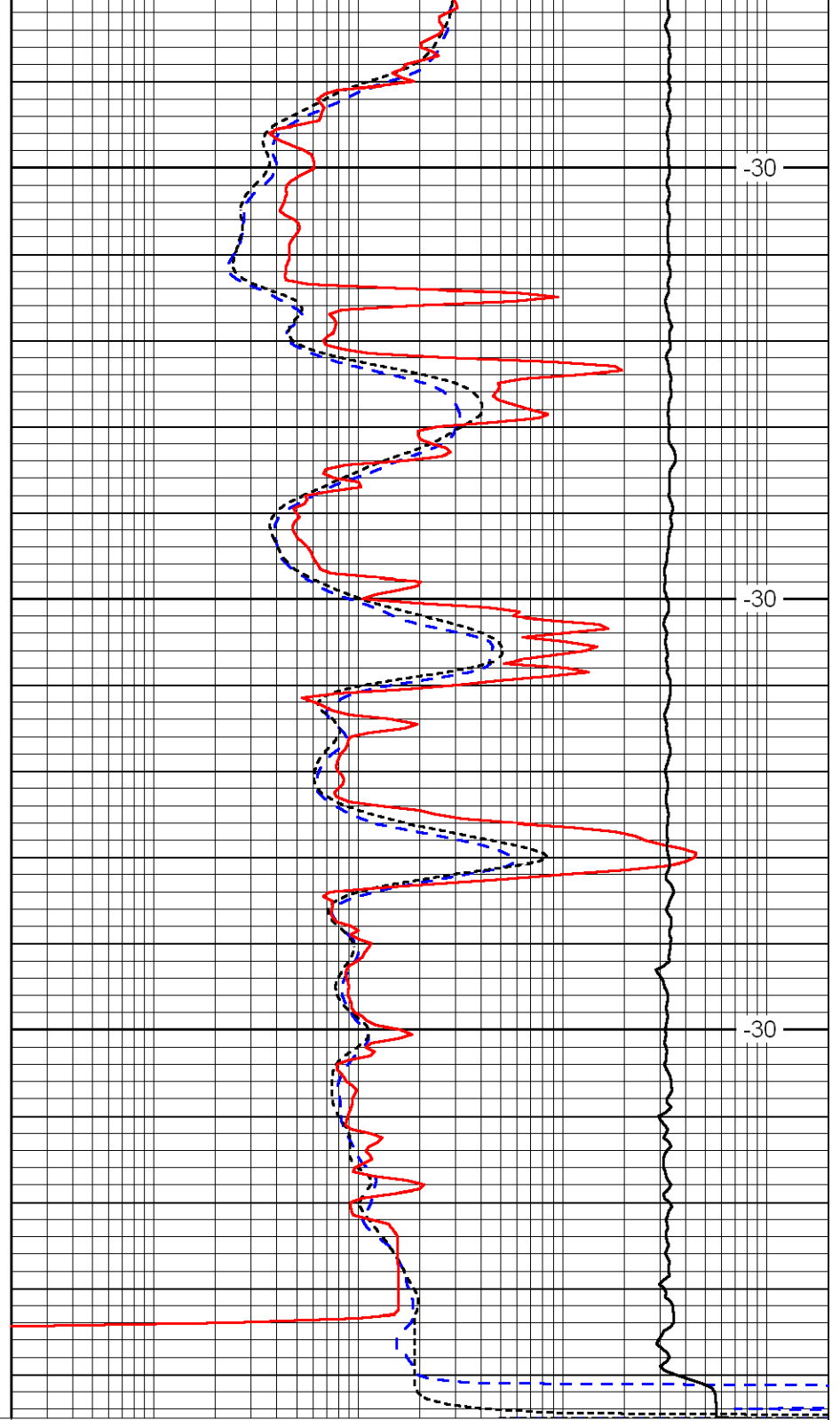


4250

4300

4350

0	Gamma Ray	150
-160	RXO/RT	40
-200	SP	0



-30

-30

-30

0.2	Deep Resistivity	2000
0.2	Medium Resistivity	2000
0.2	Shallow Resistivity	2000
10000	Line Tension	0

LSPD