



SUPERIOR
Hays,
Kansas

**MICRO
LOG**

Company MID-CONTINENT ENERGY
Well #1-21 BAHM UNIT
Field WILDCAT
County LANE
State KANSAS

Company MID - CONTINENT ENERGY OPERATING, CO.
Well #1-21 BAHM UNIT
Field WILDCAT
County LANE State KANSAS

Location: API # : 15-101-22271-0000
2428' FSL & 1255' FEL
SEC 21 TWP 19S RGE 27W
Permanent Datum GROUND LEVEL Elevation 2710
Log Measured From KELLY BUSHING 8' A.G.L.
Drilling Measured From KELLY BUSHING
Other Services
CDL/CNL
DIL
Elevation
K.B. 2718
D.F. 2716
G.L. 2710

Date	1/4/11		
Run Number	TWO		
Depth Driller	4700		
Depth Logger	4700		
Bottom Logged Interval	4698		
Top Log Interval	3800		
Casing Driller	8 5/8" @ 311'		
Casing Logger	311		
Bit Size	7 7/8"		
Type Fluid in Hole	CHEMICAL MUD	CHLORIDES 2,300 PPM	
Density / Viscosity	9.5/52		
pH / Fluid Loss	9.5/6.4		
Source of Sample	FLOWLINE		
Rim @ Meas. Temp	.950 @ 82F		
Rmf @ Meas. Temp	.713 @ 82F		
Rmc @ Meas. Temp	1.14 @ 82F		
Source of Rmf / Rmc	MEASUREMENT		
Rim @ BHT	.639 @ 122F		
Time Circulation Stopped	5 HOURS		
Time Logger on Bottom	3:00 A.M.		
Maximum Recorded Temperature	122F		
Equipment Number	0836		
Location	HAYS, KANSAS		
Recorded By	JEFF LUEBBERS		
Witnessed By	KEVIN KESSLER		

<<< Fold Here >>>

All interpretations are opinions based on inferences from electrical or other measurements and we cannot and do not guarantee the accuracy or correctness of any interpretation, and we shall not, except in the case of gross or willful negligence on our part, be liable or responsible for any loss, costs, damages, or expenses incurred or sustained by anyone resulting from any interpretation made by any of our officers, agents or employees. These interpretations are also subject to our general terms and conditions set out in our current Price Schedule.

Comments

THANK YOU FOR USING SUPERIOR WELL SERVICE HAYS, KANSAS (785) 628-6395
DIRECTIONS
ALAMOTA, KS. (HWY 96 & TURKEY RED RD.) 6 1/2S., W. INTO

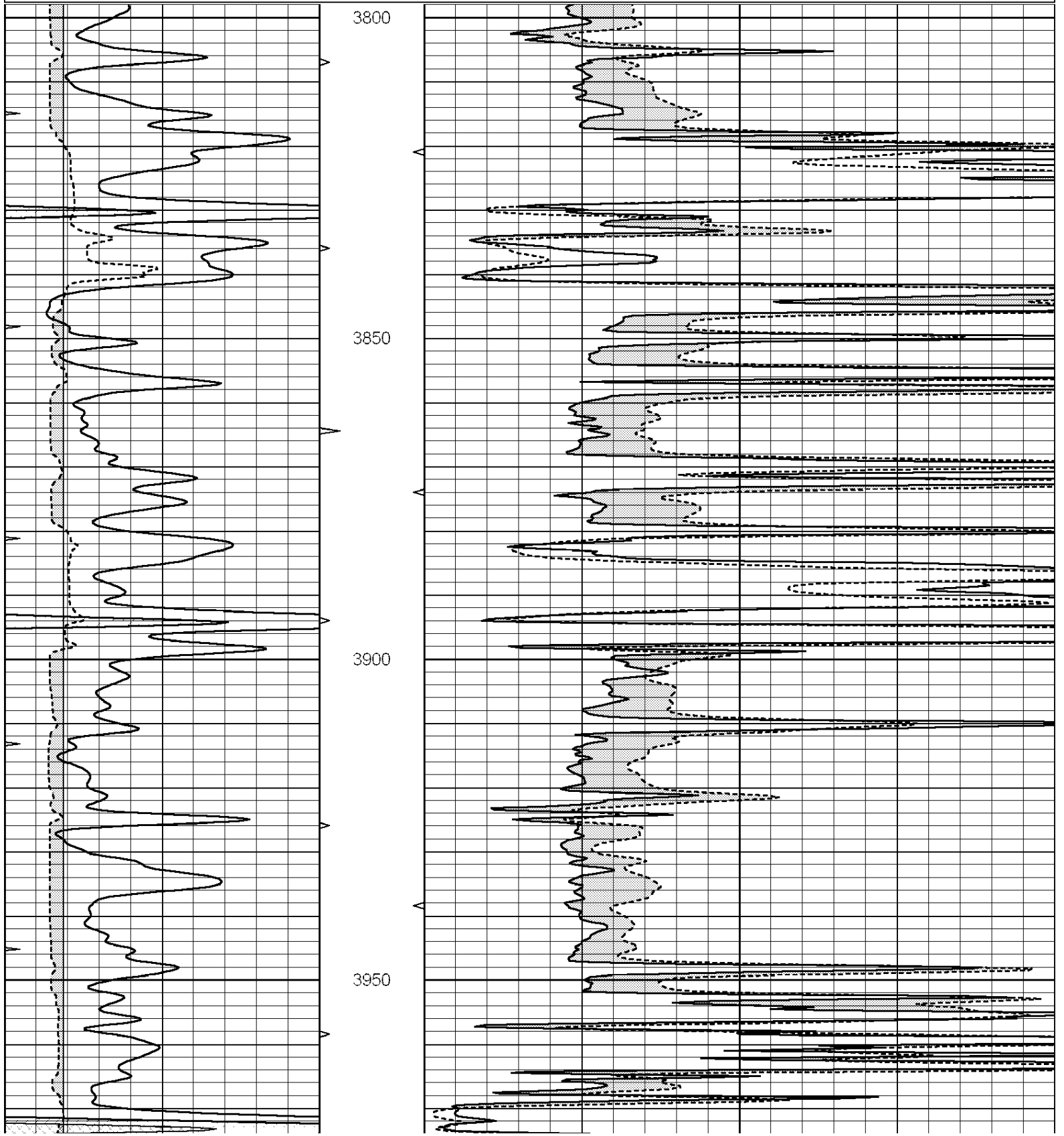


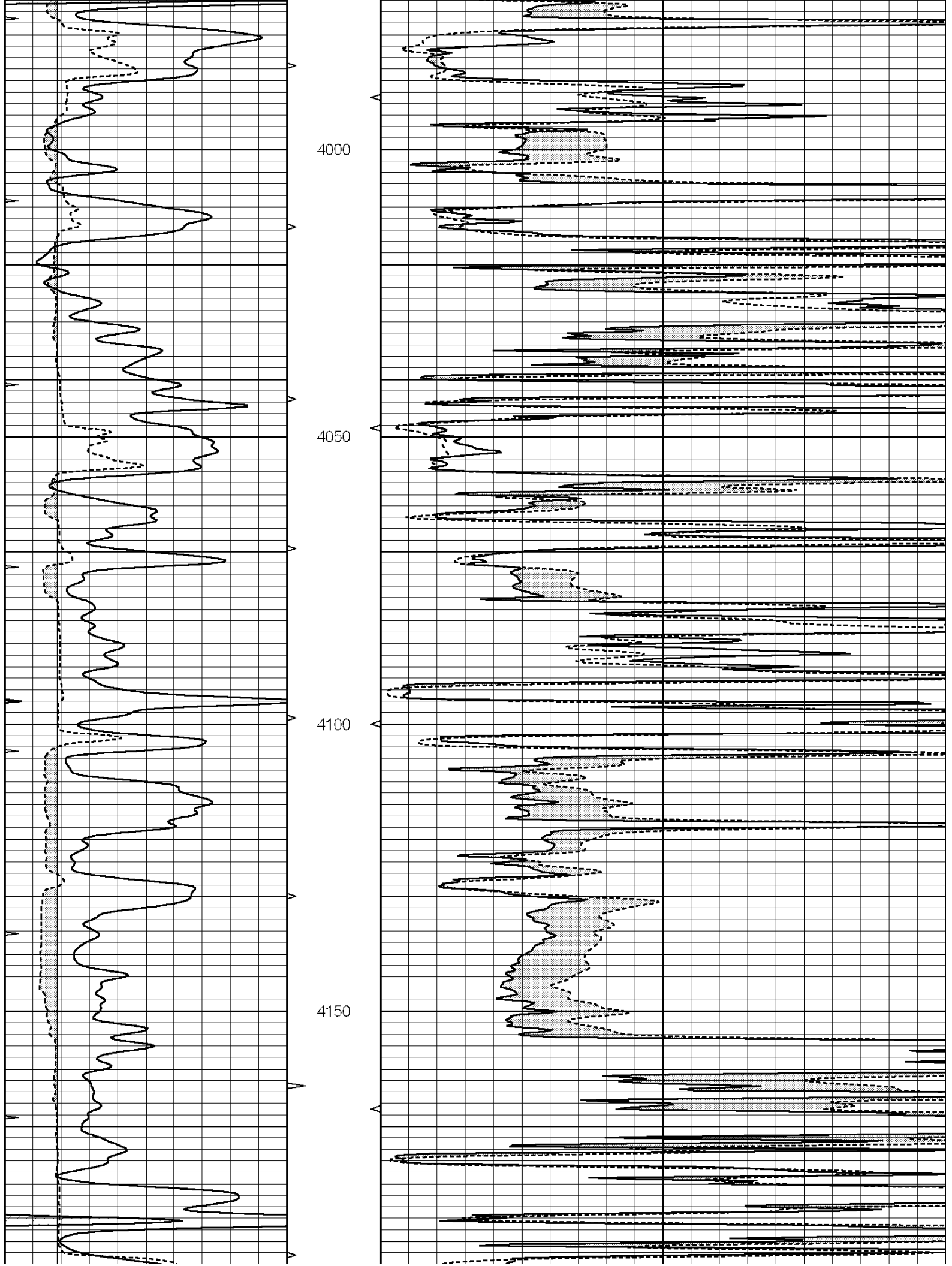
SUPERIOR
Hays,
Kansas

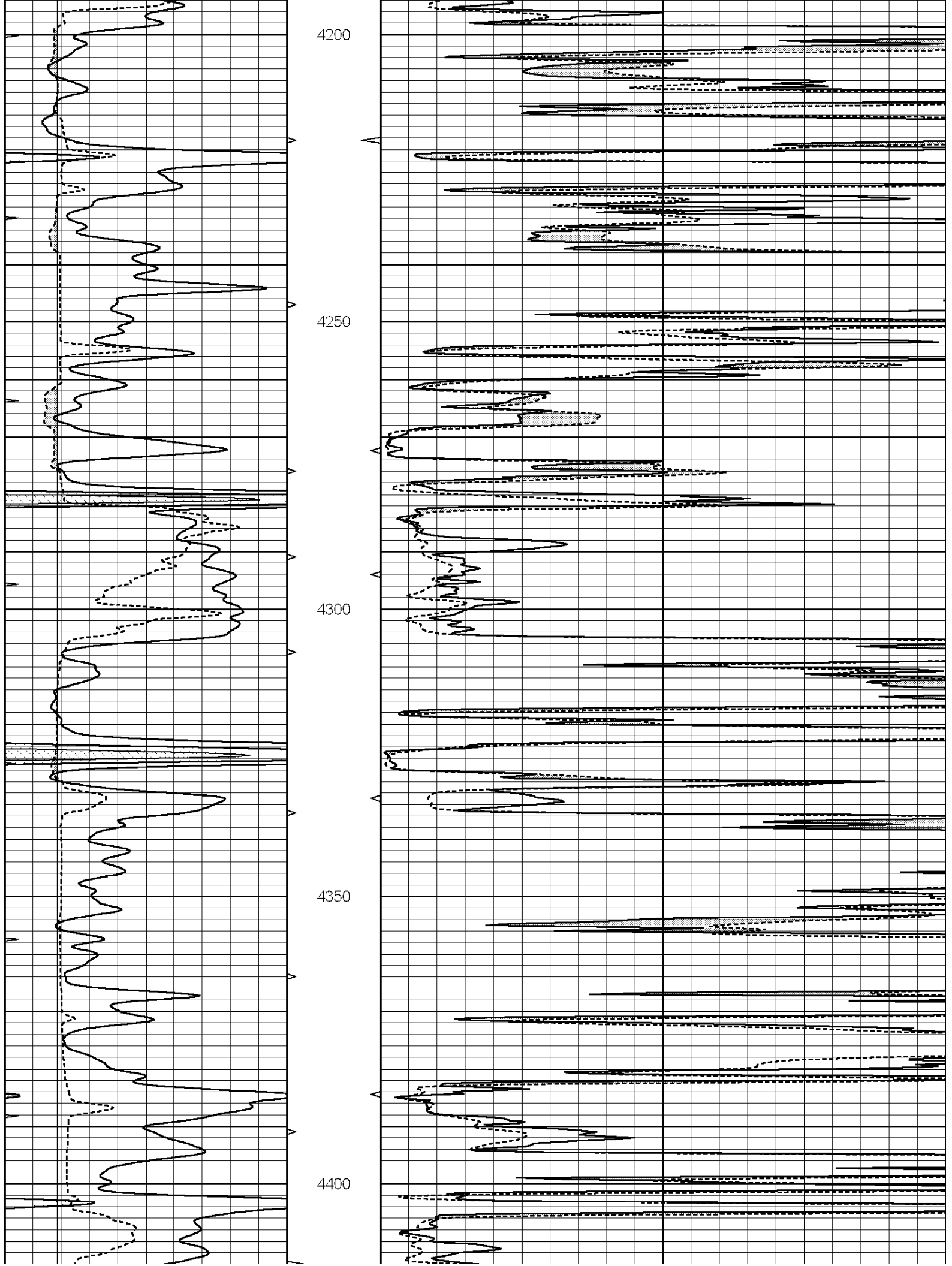
MAIN SECTION

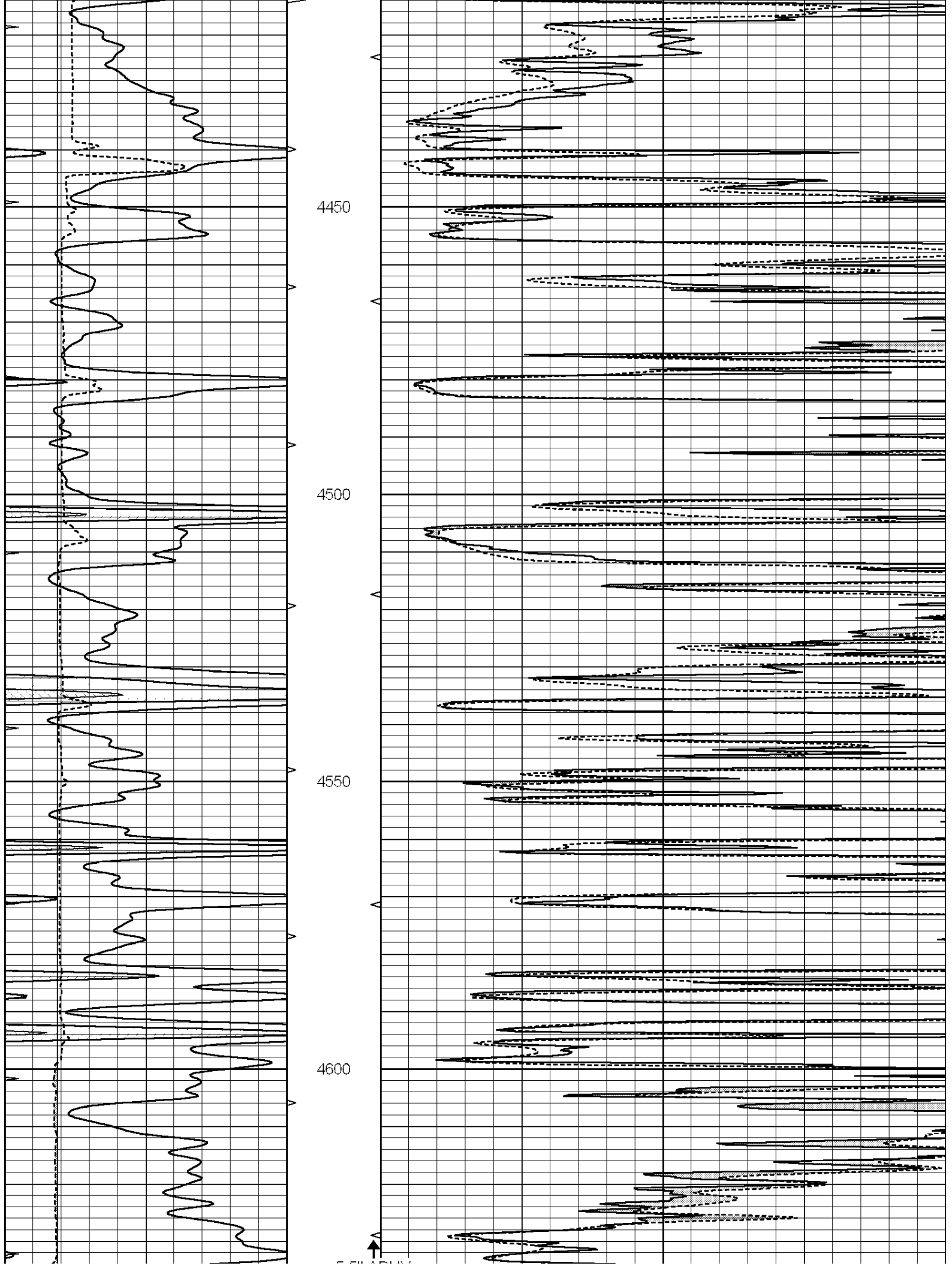
Database File: 006263ddn.db
 Dataset Pathname: pass6.2
 Presentation Format: micro
 Dataset Creation: Tue Jan 04 06:04:17 2011 by Calc Open-Cased 090629
 Charted by: Depth in Feet scaled 1:240

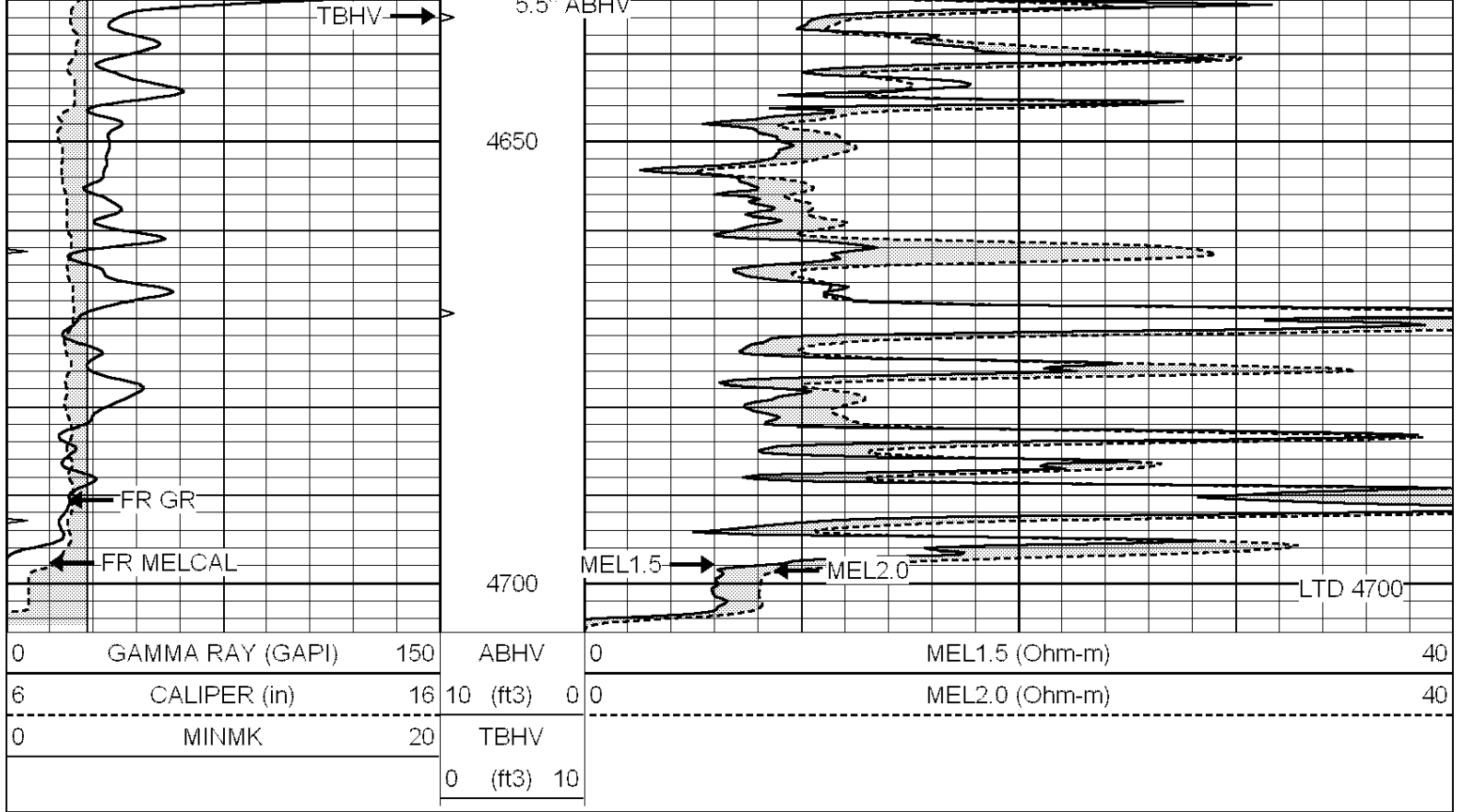
0	GAMMA RAY (GAPI)	150	ABHV	0	MEL1.5 (Ohm-m)	40
6	CALIPER (in)	16	10 (ft3)	0	MEL2.0 (Ohm-m)	40
0	MINMK	20	TBHV			
			0 (ft3)	10		









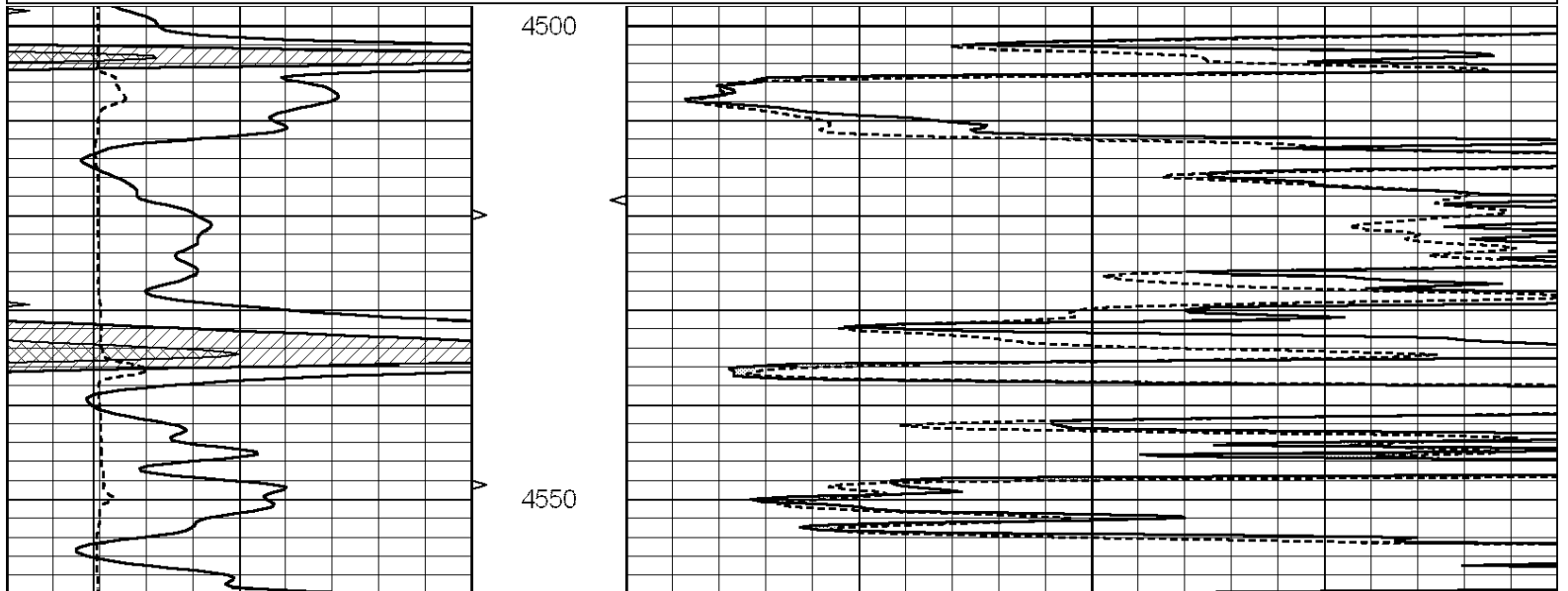


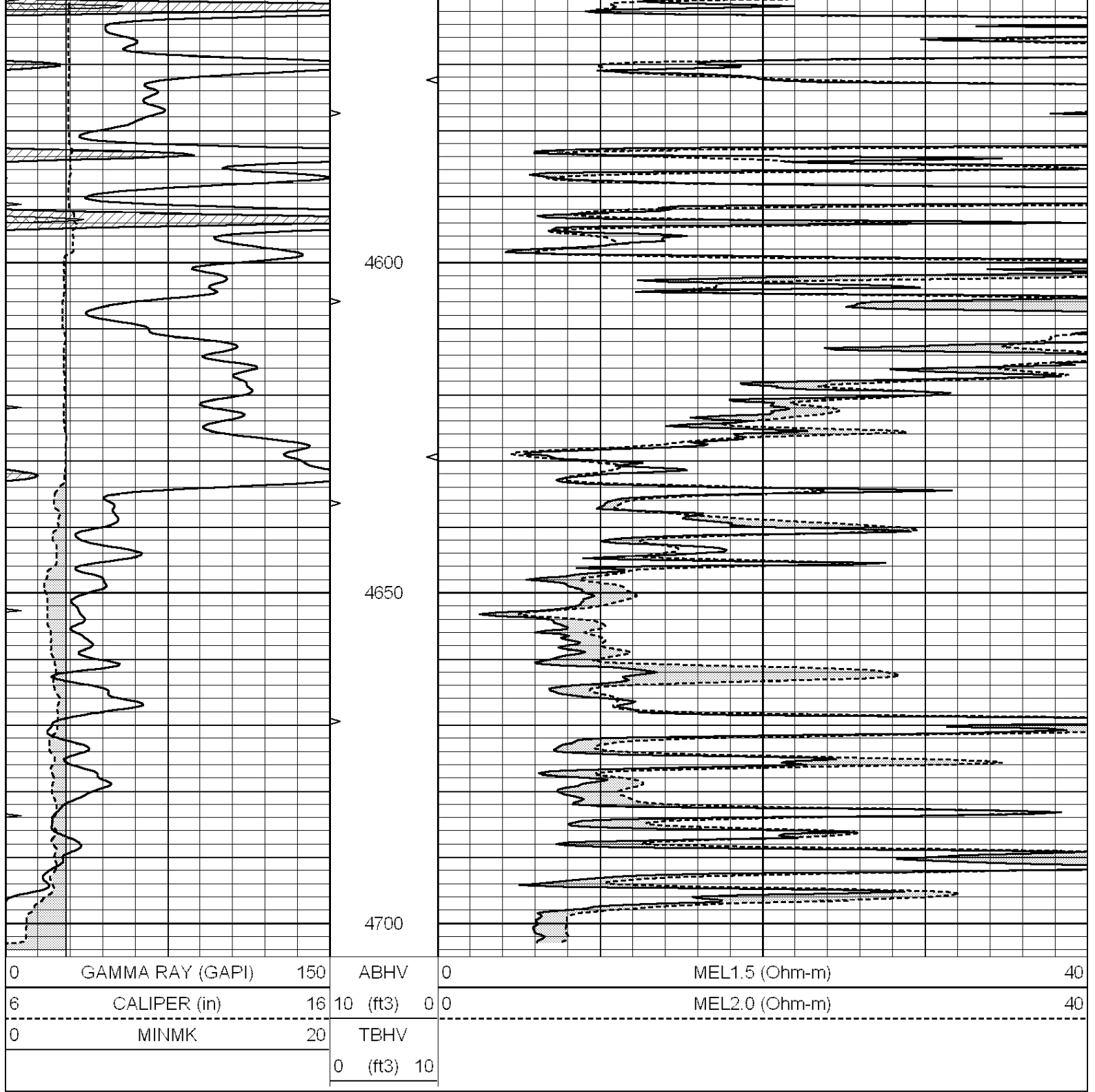
SUPERIOR
Hays,
Kansas

REPEAT SECTION

Database File: 006263ddn.db
 Dataset Pathname: pass5.5
 Presentation Format: micro
 Dataset Creation: Tue Jan 04 05:34:10 2011
 Charted by: Depth in Feet scaled 1:240

0	GAMMA RAY (GAPI)	150	ABHV	0	MEL1.5 (Ohm-m)	40
6	CALIPER (in)	16	10 (ft3)	0	MEL2.0 (Ohm-m)	40
0	MINMK	20	TBHV			
			0 (ft3)	10		





Calibration Report

Database File: 006263ddn.db
 Dataset Pathname: pass6.2
 Dataset Creation: Tue Jan 04 06:04:17 2011 by Calc Open-Cased 090629

MICRO Calibration Report

Serial Number: 2
 Tool Model: PROBE
 Performed: Tue Jan 04 05:23:55 2011

Caliper Calibration: Gain=5.121 Offset=1.923

References Low Cal High Cal
 5.800 14.000

Readings 0.757 2.358

1.5" Calibration: Gain=34.000 Offset=-0.800

	Low Cal	High Cal
References	0.000	20.000
Readings	0.065	1.210

2" Calibration: Gain=45.000 Offset=0.000

	Low Cal	High Cal
References	0.000	20.000
Readings	0.012	1.043

Gamma Ray Calibration Report

Serial Number:	GR3	
Tool Model:	OPEN	
Performed:	Tue Jan 04 05:10:57 2011	

Calibrator Value:	200.0	GAPI
-------------------	-------	------

Background Reading:	3.0	cps
Calibrator Reading:	186.0	cps

Sensitivity:	0.9000	GAPI/cps
--------------	--------	----------