



**MIDWEST SURVEYS**  
 LOGGING - PERFORATING - CONSULTING SERVICES  
 P.O. Box 68, Osawatomie, KS 66064  
 913 / 755 - 2128

**GAMMA RAY / NEUTRON / CCL**

File No. \_\_\_\_\_

Company **Sirius Energy Corporation**  
 Well **West VanWinkle No. AC-36**  
 Field **Bush City Shoesting**  
 County **Anderson** State **Kansas**

Location **5110' FSL & 1080' FEL**  
**NW-NW-NE-NE**

Sec. **14** Twp. **21s** Rge. **20e**  
 Permanent Datum **GL** Elevation **NA**  
 Log Measured From **GL** K.B. **NA**  
 Drilling Measured From **GL** D.F. **NA**  
**GL** E.L. **NA**

Date	11-30-2010
Run Number	One
Depth Drier	754.0
Depth Logger	746.6
Bottom Logged Interval	745.6
Top Log Interval	754.0
Fluid Level	Full
Type Fluid	Water
Density / viscosity	NA
Salinity - PPM Cl	NA
Max. Recorded Temp	NA
Estimated Cement Top	0.0
Equipment No.	107
Recorded By	Steve Mindisch
Witnessed By	Kasper Nielsen

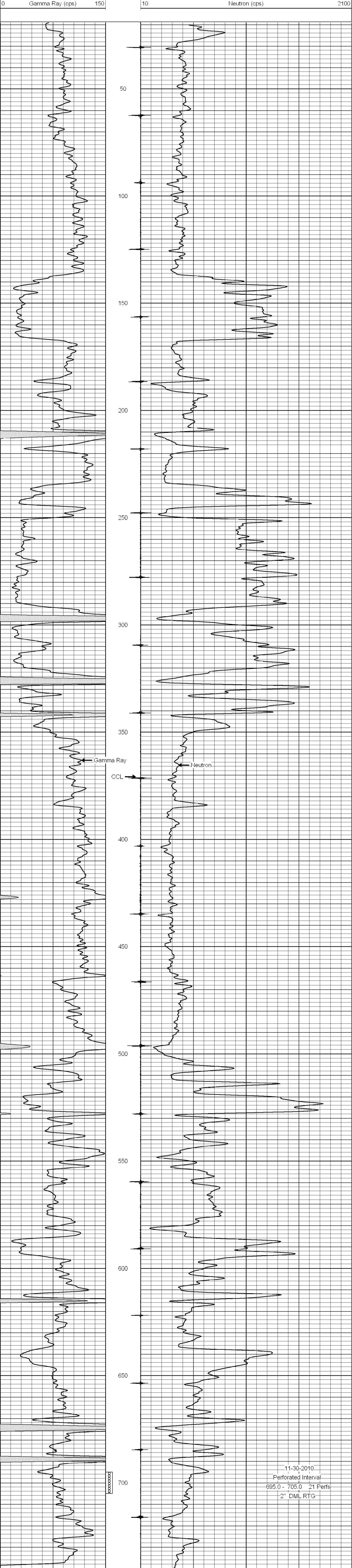
<<< Fold Here >>>

All interpretations are opinions based on inferences from electrical or other measurements and we cannot and do not guarantee the accuracy or correctness of any interpretation, and we shall not, except in the case of gross or willful negligence on our part, be liable or responsible for any loss, costs, damages, or expenses incurred or sustained by anyone resulting from any interpretation made by any of our officers, agents or employees. These interpretations are also subject to our general terms and conditions set out in our current Price Schedule.

Comments

Drilling Contractors :  
 John Leis Oilfield Services

Database File: vwiki36ac.db  
 Dataset Pathname: pass1  
 Presentation Format: gr-n-ccl  
 Dataset Creation: Tue Nov 30 11:48:24 2010 by Log Std Casedhole 07122  
 Charted by: Depth in Feet scaled 1:240



11-30-2010  
 Perforated Interval  
 695.0 - 705.0 21 Perfs  
 2" DML RTG