



# Radiation Guard Log

**DIGITAL LOG** (785) 625-3858

API No.	15-053-21255-00-00		
Company	John Roy Evans Oil Company, LLC		
Well	Beck "B" #4		
Field	Bloomer		
County	Ellsworth	State	Kansas
Location	N2 SE NW SW 1900' FSL & 660' FWL		
Sec: 30	Twp: 17S	Rge: 10W	Other Services
Permanent Datum	Ground Level	Elevation	K.B. 1821
Log Measured From	Kelly Bushing	5 Ft. Above Perm. Datum	D.F. 1816
Drilling Measured From	Kelly Bushing		G.L. 1816

Date	12/21/2010	
Run Number	One	
Depth Driller	3336	
Depth Logger	3337	
Bottom Logged Interval	3336	
Top Log Interval	550	
Casing Driller	8.625 @ 595	
Casing Logger	592	
Bit Size	7.875	
Type Fluid in Hole	Chemical	
Salinity, ppm CL	5100	
Density / Viscosity	9.4	59
pH / Fluid Loss	10.5	8.0
Source of Sample	Flowline	
Rm @ Meas. Temp	1.30 @	58
Rmf @ Meas. Temp	0.98 @	58
Rmc @ Meas. Temp	1.76 @	58
Source of Rmf / Rmc	Charts	
Rm @ BHT	0.68 @	111
Operating Rig Time	2 Hours	
Max Rec. Temp. F	111	
Equipment Number	17	
Location	Hays	
Recorded By	R. Barnhart	
Witnessed By	Josh Austin	

<<< Fold Here >>>

All interpretations are opinions based on inferences from electrical or other measurements and we cannot and do not guarantee the accuracy or correctness of any interpretation, and we shall not, except in the case of gross or willful negligence on our part, be liable or responsible for any loss, costs, damages, or expenses incurred or sustained by anyone resulting from any interpretation made by any of our officers, agents or employees. These interpretations are also subject to our general terms and conditions set out in our current Price Schedule.

**Comments**

Thank you for using Log-Tech, Inc.  
(785) 625-3858

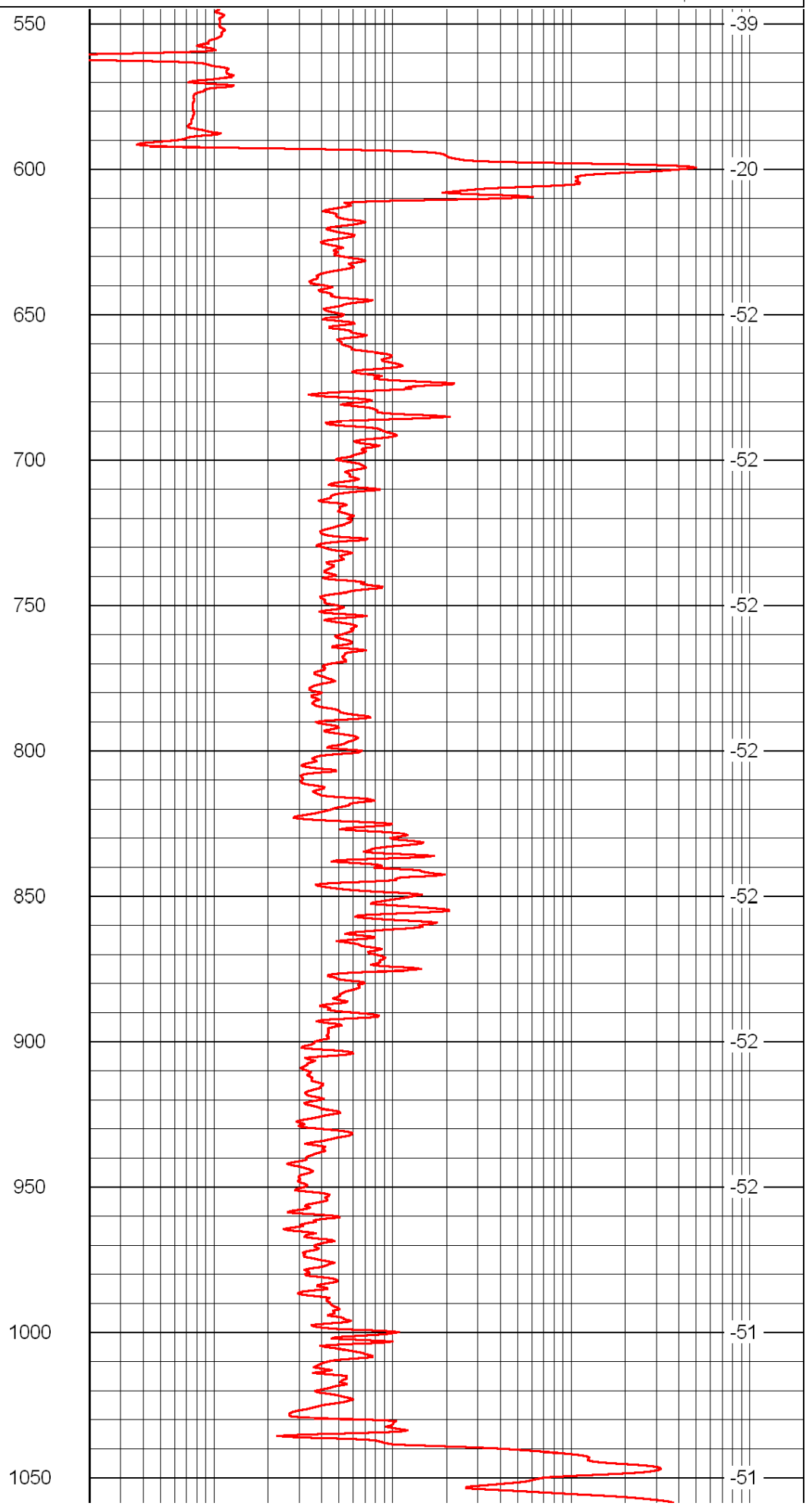
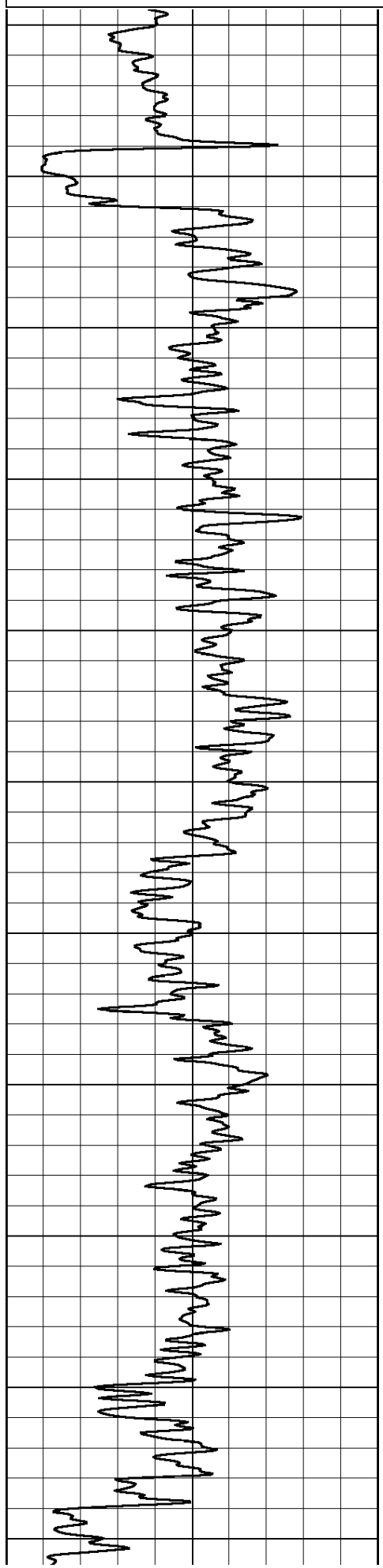
Clafin, KS:  
E to county line, 1 /2N, E into

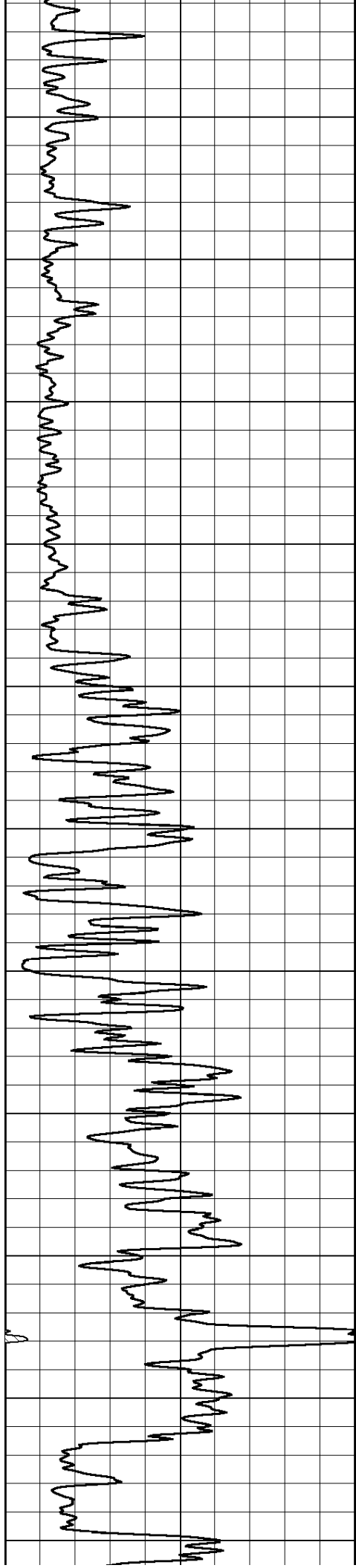
Database File: c:\warrior\data\john roy evans\_beck b #4\johnroyevans\_beckb-4hd.db  
 Dataset Pathname: rag/jrer2  
 Presentation Format: rag2in  
 Dataset Creation: Tue Dec 21 03:53:23 2010  
 Charted by: Depth in Feet scaled 1:600

0 Gamma Ray 150

0.2 lgrd 2000

LSPD





1100

1150

1200

1250

1300

1350

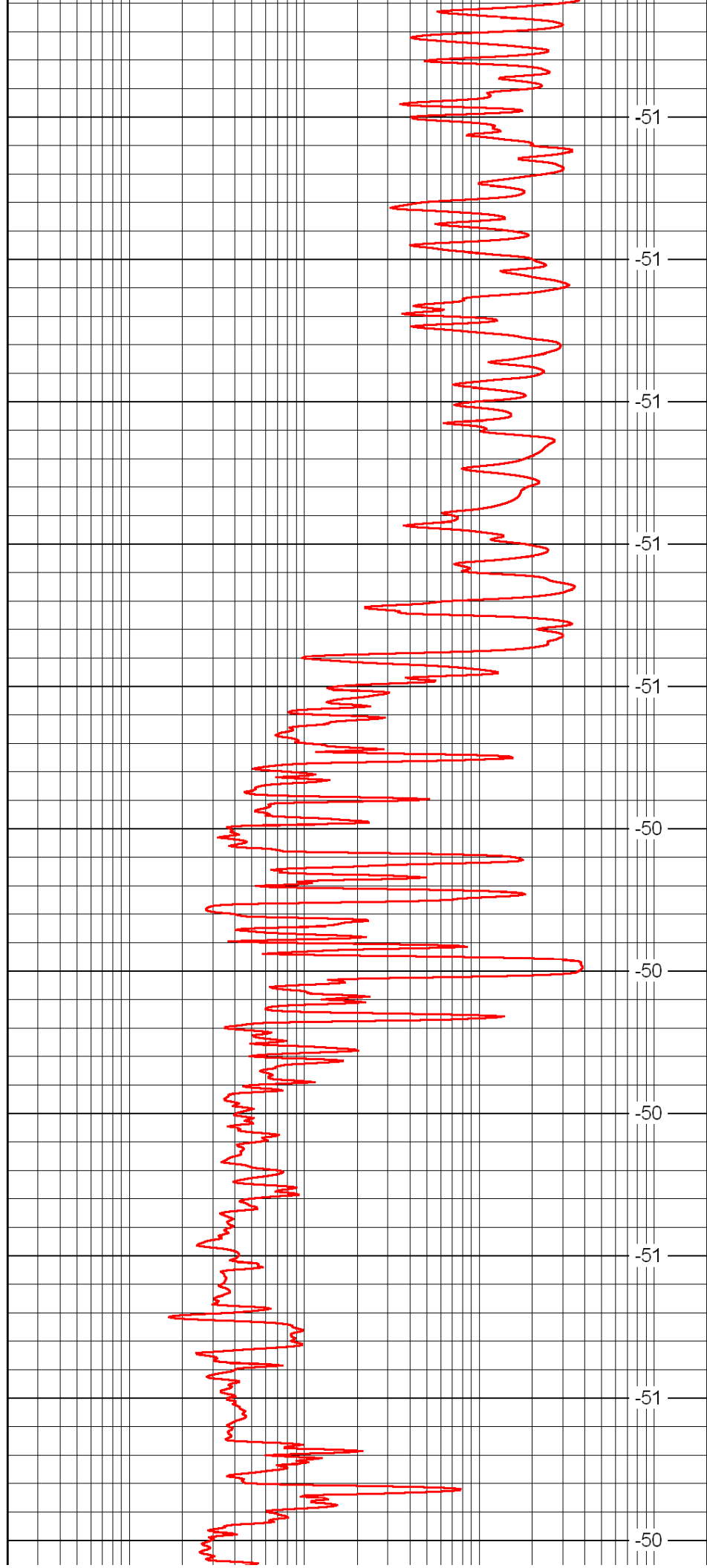
1400

1450

1500

1550

1600



-51

-51

-51

-51

-51

-50

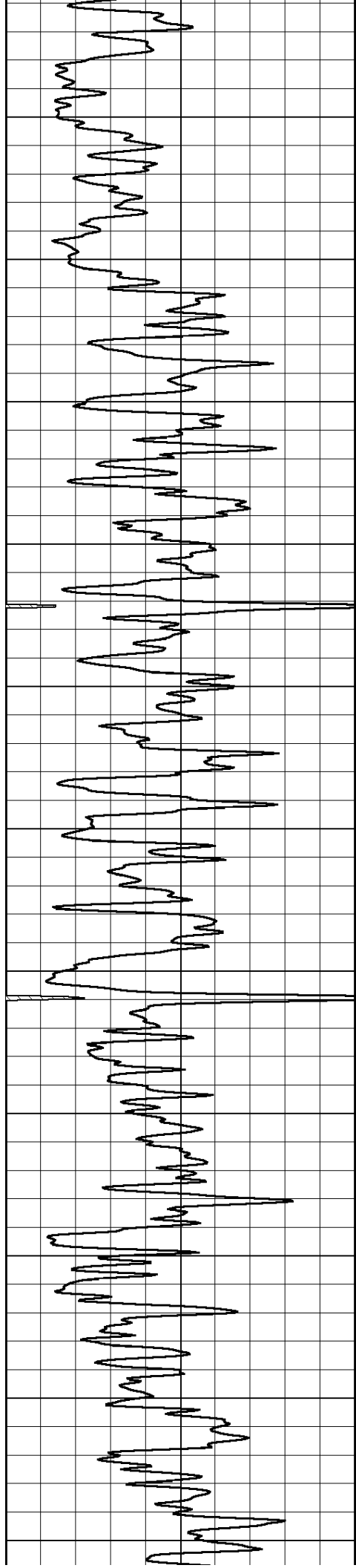
-50

-50

-51

-51

-50



1650

1700

1750

1800

1850

1900

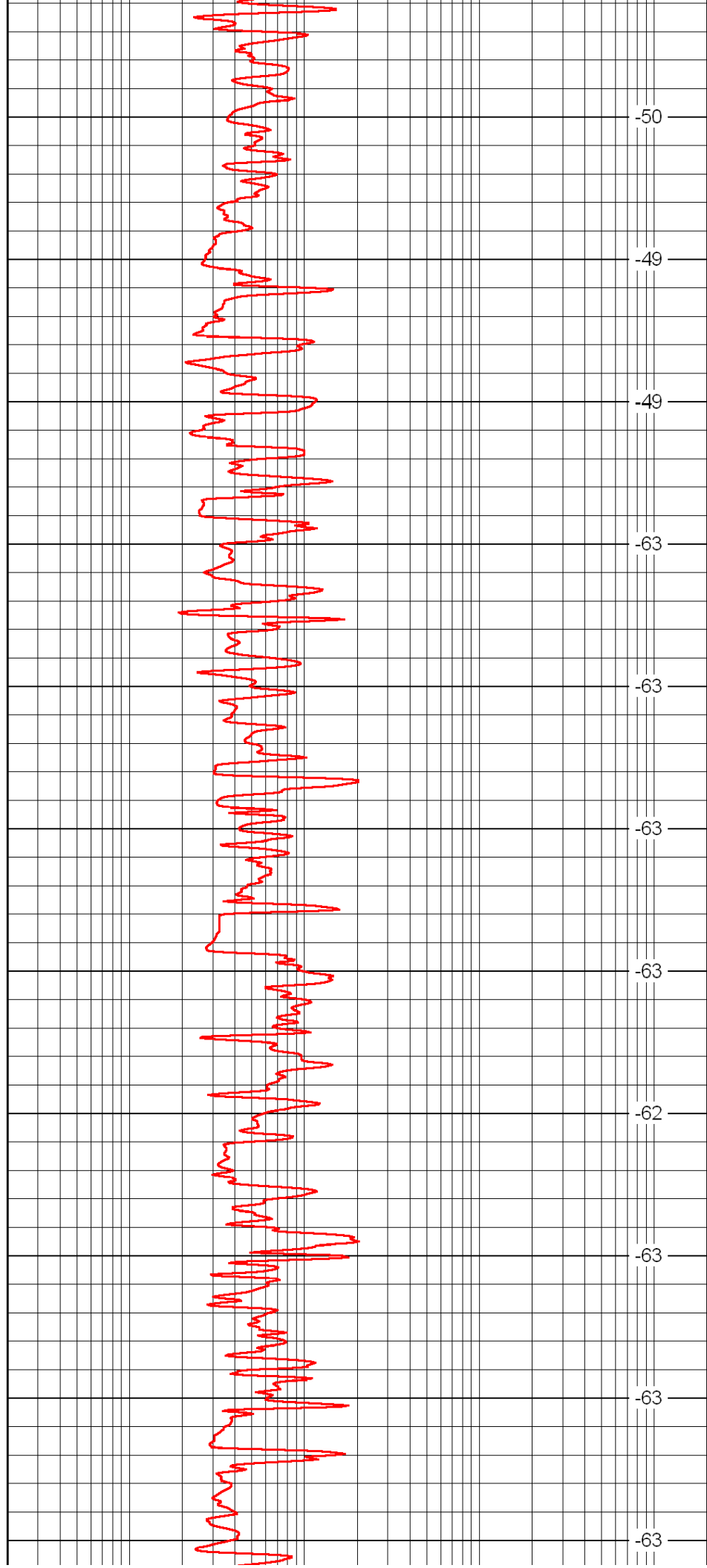
1950

2000

2050

2100

2150



-50

-49

-49

-63

-63

-63

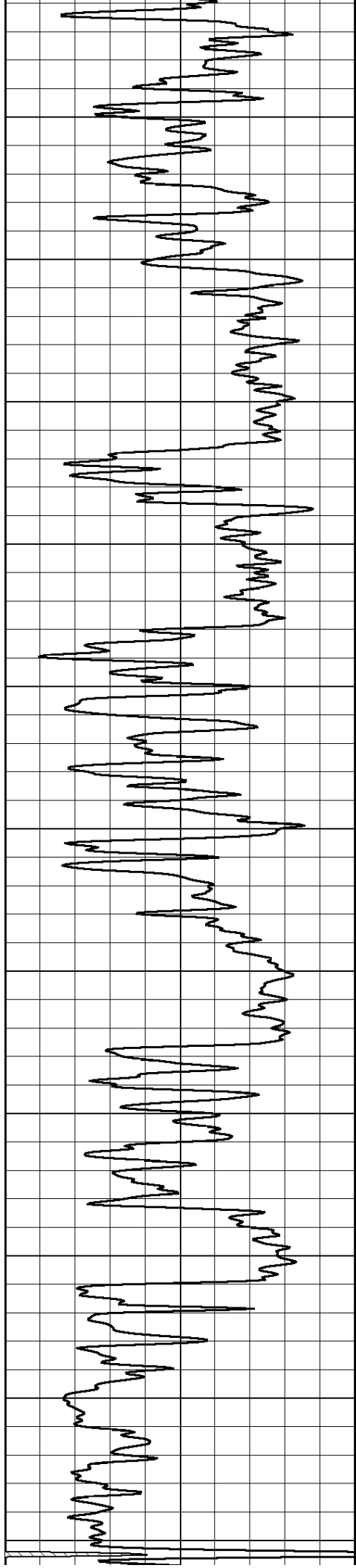
-63

-62

-63

-63

-63



2200

2250

2300

2350

2400

2450

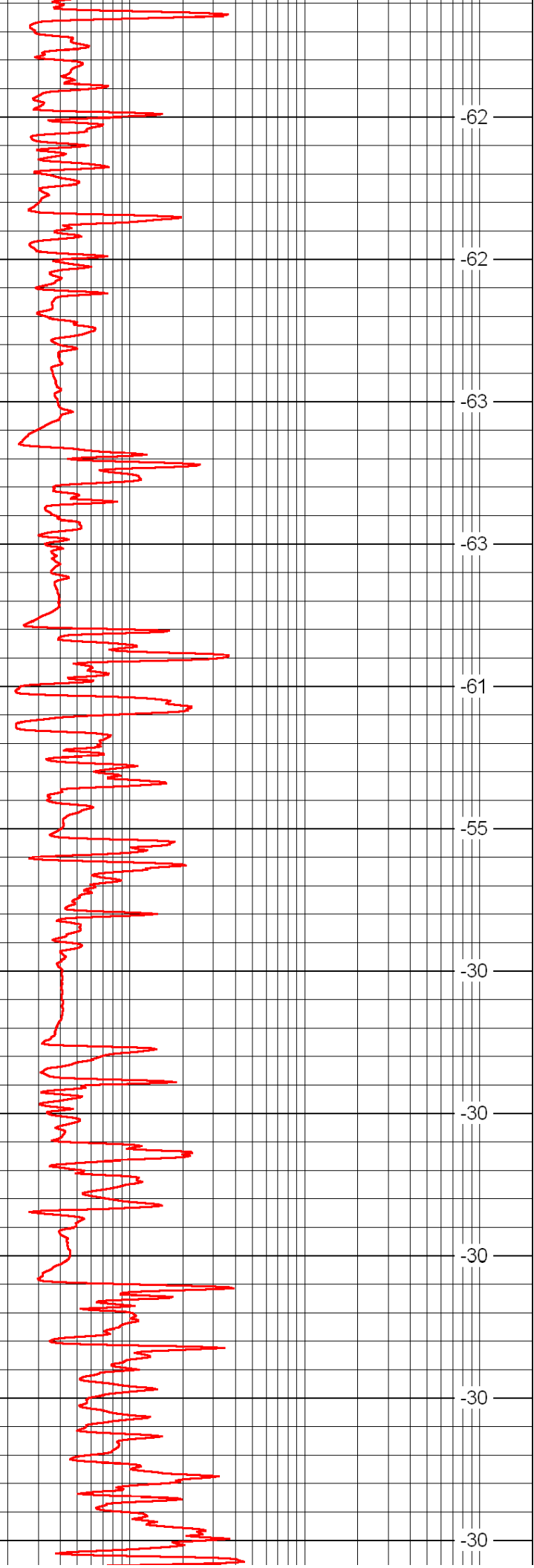
2500

2550

2600

2650

2700



-62

-62

-63

-63

-61

-55

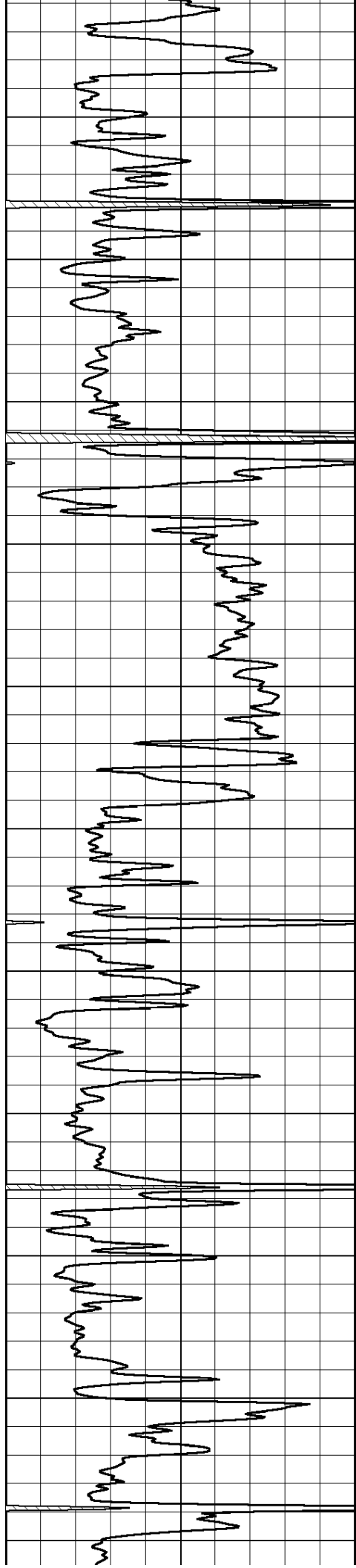
-30

-30

-30

-30

-30



2750

2800

2850

2900

2950

3000

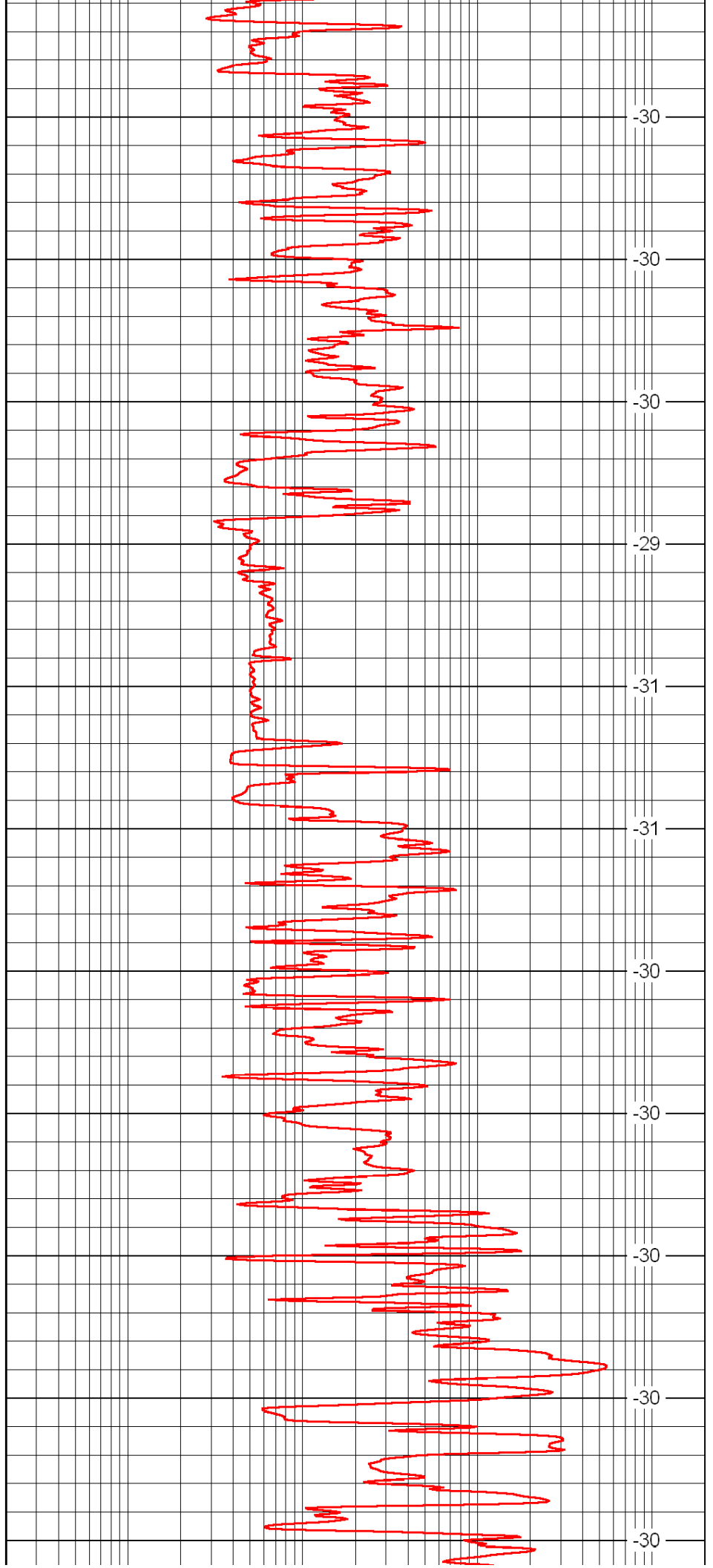
3050

3100

3150

3200

3250



-30

-30

-30

-29

-31

-31

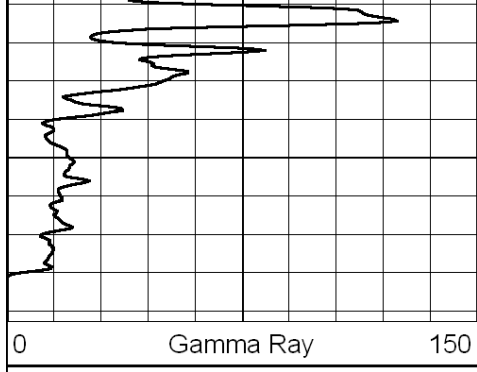
-30

-30

-30

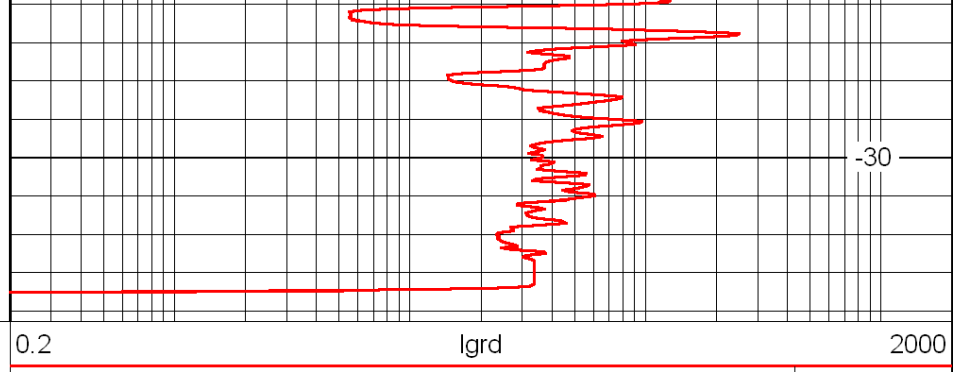
-30

-30



3300

0 Gamma Ray 150

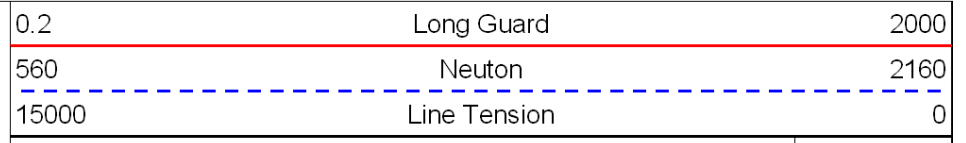
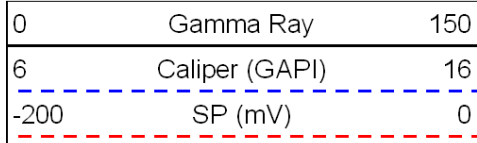


-30

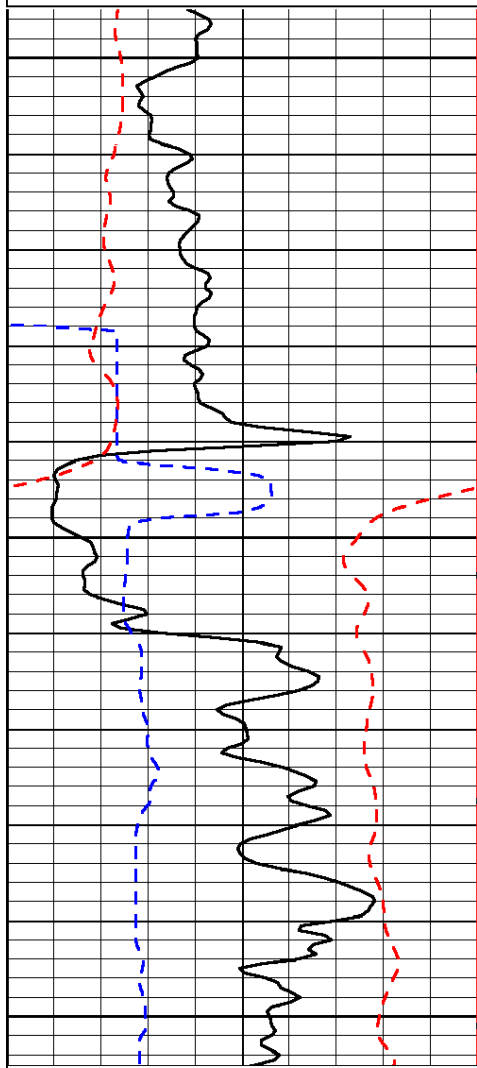
0.2 lgrd 2000

LSPD

Database File: c:\warrior\data\john roy evans\_beck b #4\johnroyevans\_beckb-4hd.db  
 Dataset Pathname: rag/jrer2  
 Presentation Format: rag  
 Dataset Creation: Tue Dec 21 03:53:23 2010  
 Charted by: Depth in Feet scaled 1:240



LSPD



550

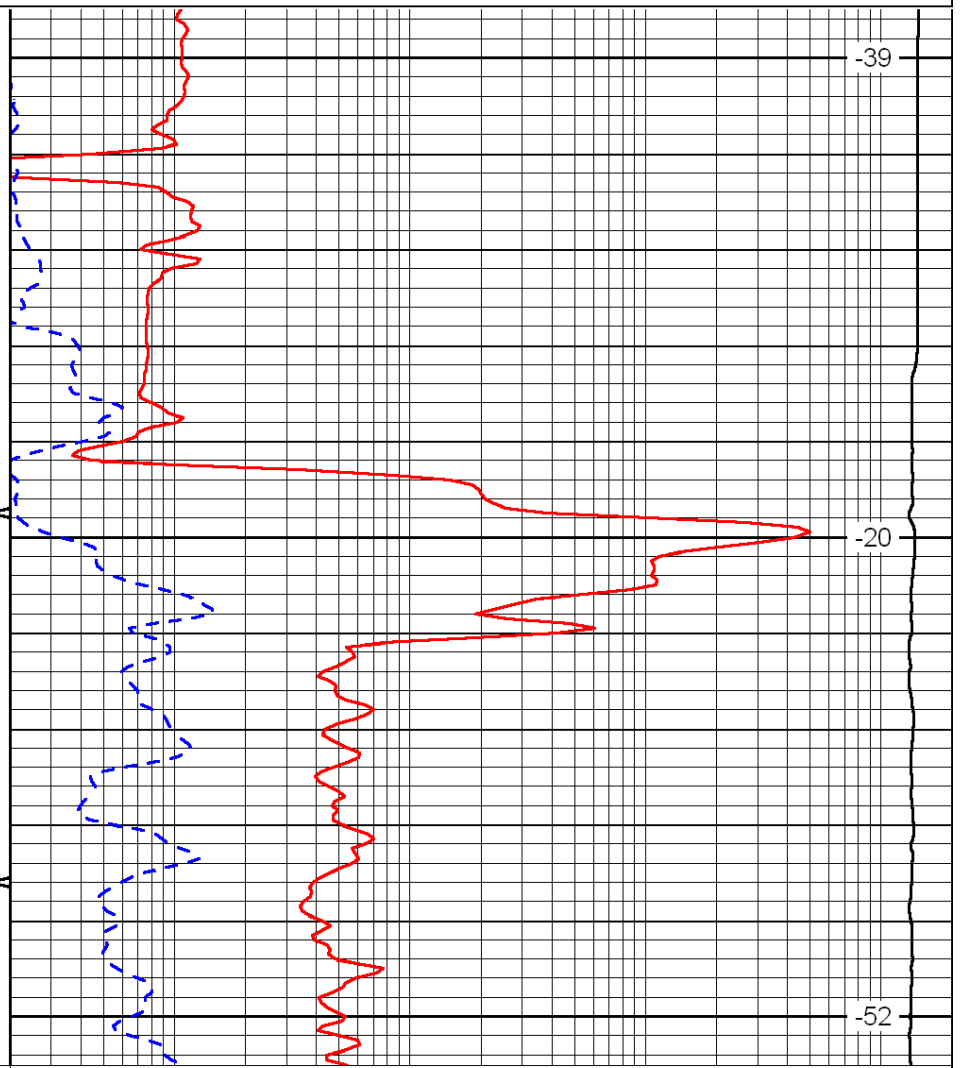
600

650

0 Gamma Ray 150

6 Caliper (GAPI) 16

-200 SP (mV) 0



-39

-20

-52

0.2 Long Guard 2000

560 Neuton 2160

15000 Line Tension 0

LSPD

Database File: c:\warrior\data\john roy evans\_beck b #4\johnroyevans\_beckb-4hd.db  
 Dataset Pathname: rag/jrer2  
 Presentation Format: rag  
 Dataset Creation: Tue Dec 21 03:53:23 2010  
 Charted by: Depth in Feet scaled 1:240

0	Gamma Ray	150	0.2	Long Guard	2000
6	Caliper (GAPI)	16	560	Neutron	2160
-200	SP (mV)	0	15000	Line Tension	0
LSPD					

