

Company Castle Resources Inc.
 Well Rolfs #1
 Field Lorraine
 County Ellsworth
 State Kansas

Company Castle Resources Inc.
 Well Rolfs #1
 Field Lorraine
 County Ellsworth State Kansas

Location: API #: 15 147 21250
 830' FSL & 1650' FWL
 SEC 23 TWP 17S RGE 9W
 Permanent Datum Ground Level Elevation 1770'
 Log Measured From KB 8' AGL
 Drilling Measured From KB
 Other Services
 CDNL
 ML
 Elevation
 K.B. 1778'
 D.F. -----
 G.L. 1770'

Date	10-11-10
Run Number	One
Depth Driller	3400'
Depth Logger	3397'
Bottom Logged Interval	3394'
Top Log Interval	2000'
Casing Driller	248'
Casing Logger	248'
Bit Size	7 7/8"
Type Fluid in Hole	Chemical
Density / Viscosity	9.0 lb.
pH / Fluid Loss	9.2 (ml./30 min.)
Source of Sample	Pit
Rm @ Meas. Temp	1.2@62degf
Rmf @ Meas. Temp	.96@62degf
Rmc @ Meas. Temp	1.54@62degf
Source of Rmf / Rmc	Calculated
Rm @ BHT	.70@106degf
Time Circulation Stopped	5:30 p.m.
Time Logger on Bottom	8:30 p.m.
Maximum Recorded Temperature	100 degf
Equipment Number	T045
Location	Hays, KS.
Recorded By	L. Smith
Witnessed By	Mr. Jerry Green

<<< Fold Here >>>

All interpretations are opinions based on inferences from electrical or other measurements and we cannot and do not guarantee the accuracy or correctness of any interpretation, and we shall not, except in the case of gross or willful negligence on our part, be liable or responsible for any loss, costs, damages, or expenses incurred or sustained by anyone resulting from any interpretation made by any of our officers, agents or employees. These interpretations are also subject to our general terms and conditions set out in our current Price Schedule.

Comments

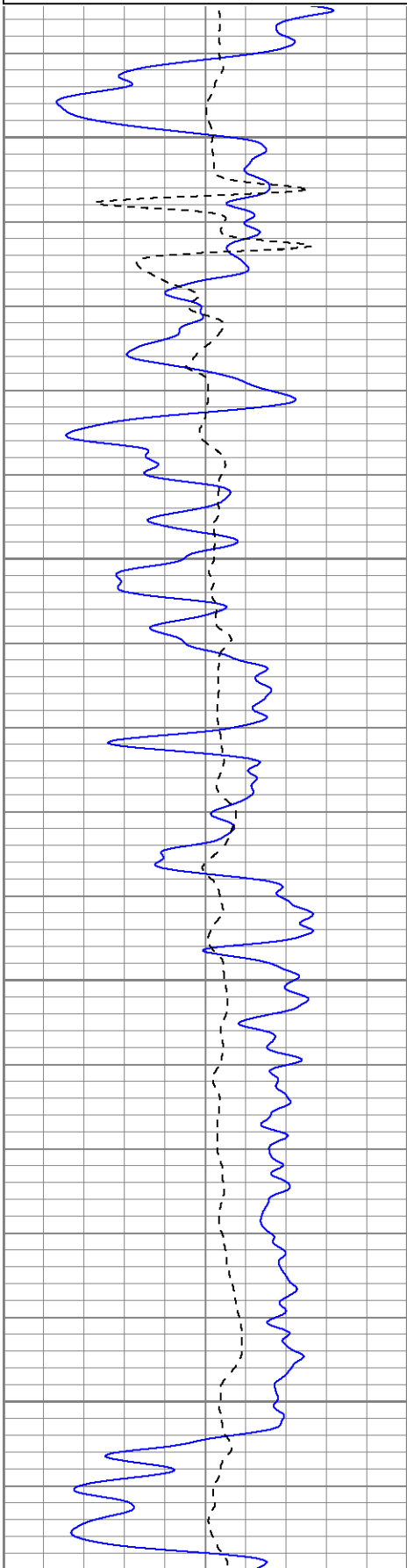
1 mile south, 1.25 miles east of Lorraine Ks.

Thanks for using The Perforators Hays, KS. (785-621-4604)

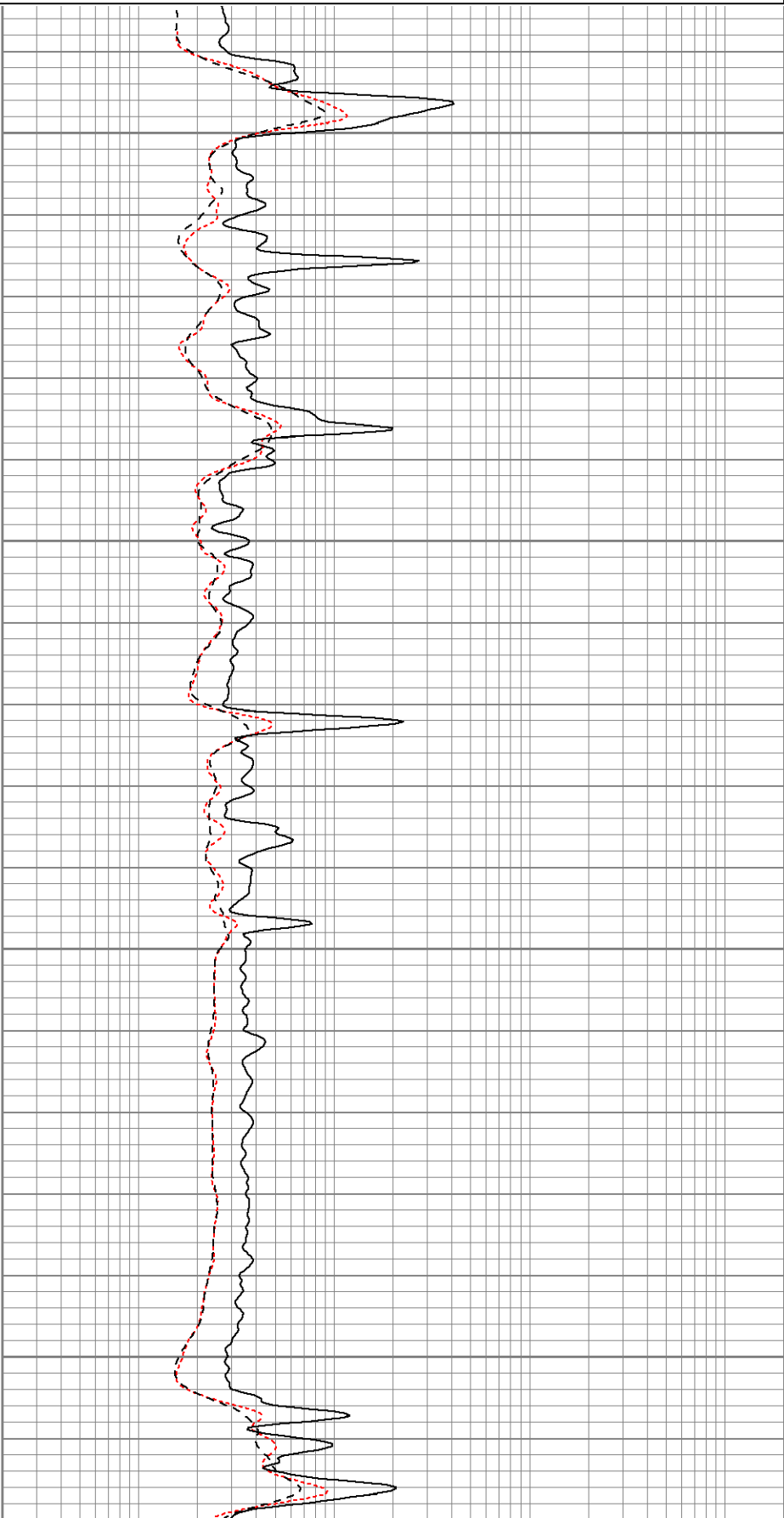
Database File: crrlfs#1.db
 Dataset Pathname: pass2
 Presentation Format: kdil
 Dataset Creation: Mon Oct 11 20:56:33 2010 by Log Open-Cased 090629
 Charted by: Depth in Feet scaled 1:240

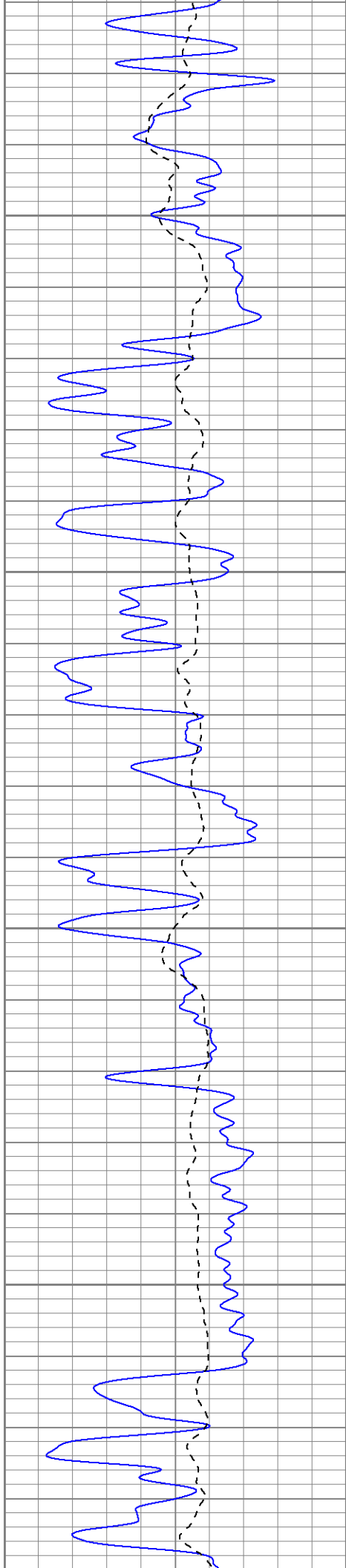
0	GR (GAPI)	150
-100	SP (mV)	100

0.2	RILM (Ohm-m)	2000
0.2	RILD (Ohm-m)	2000
0.2	RLL3 (Ohm-m)	2000



2000
 2050
 2100
 2150



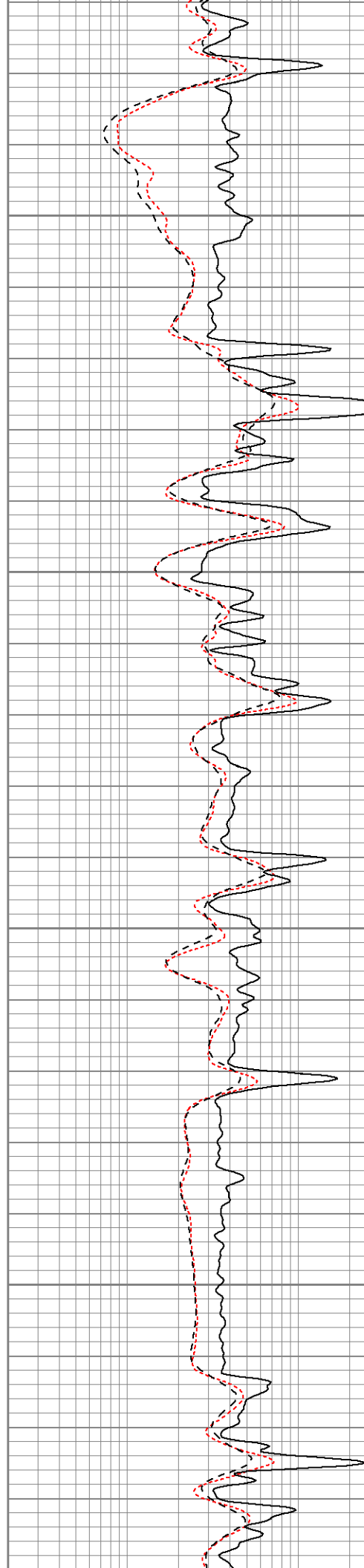


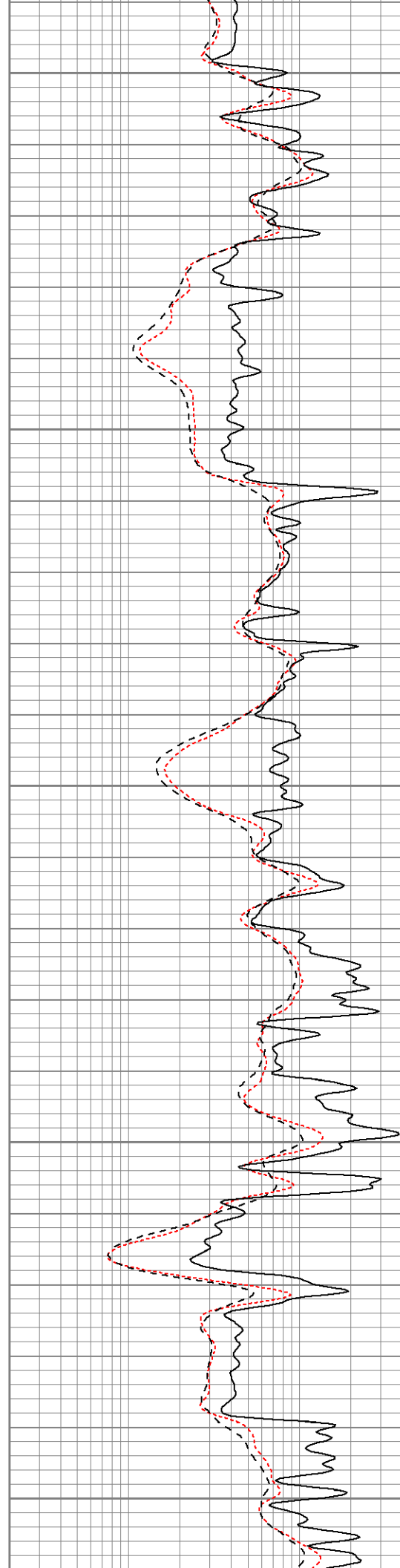
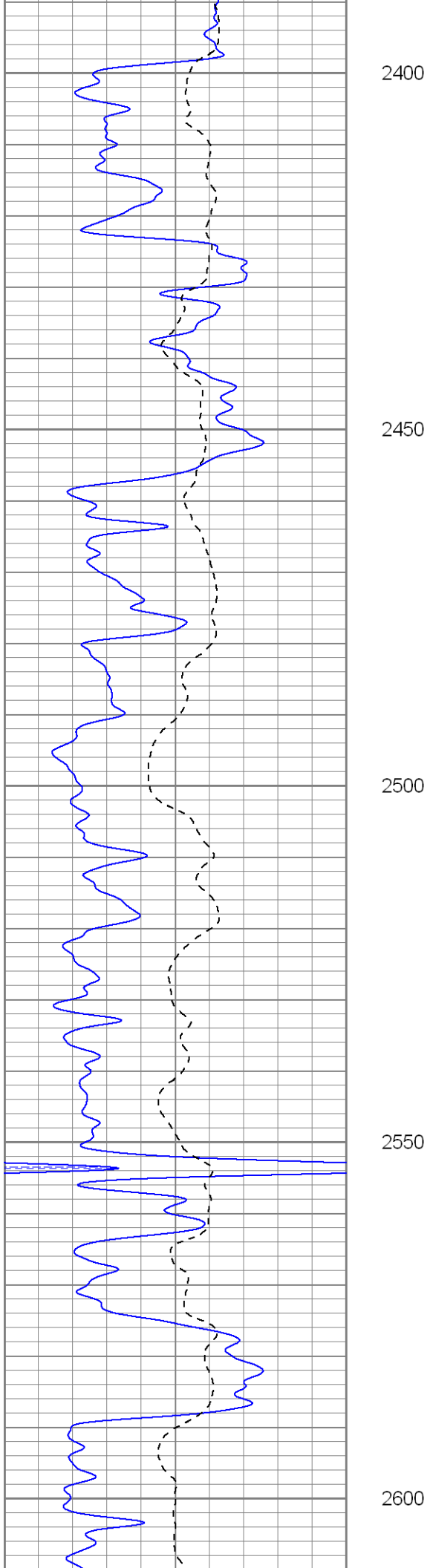
2200

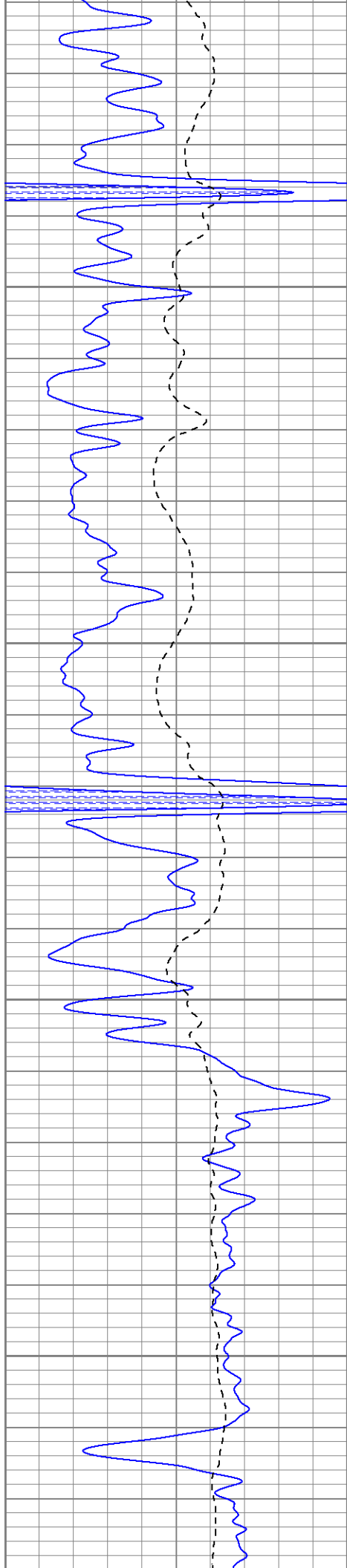
2250

2300

2350





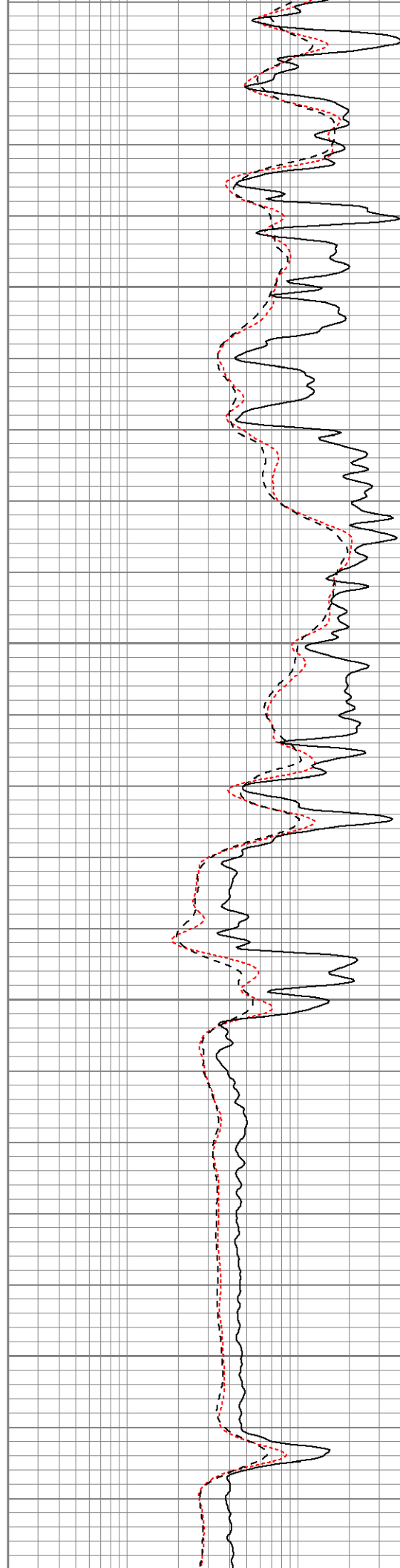


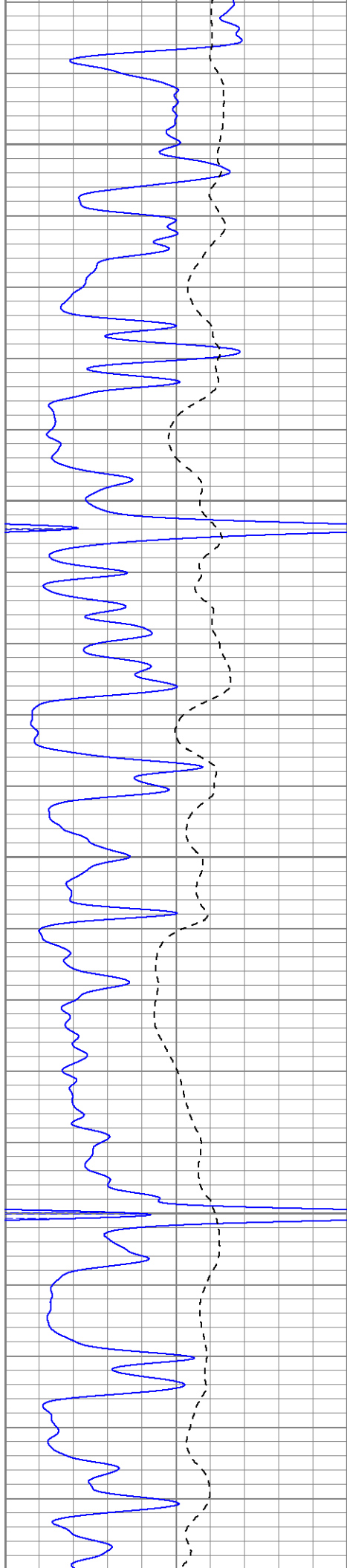
2650

2700

2750

2800





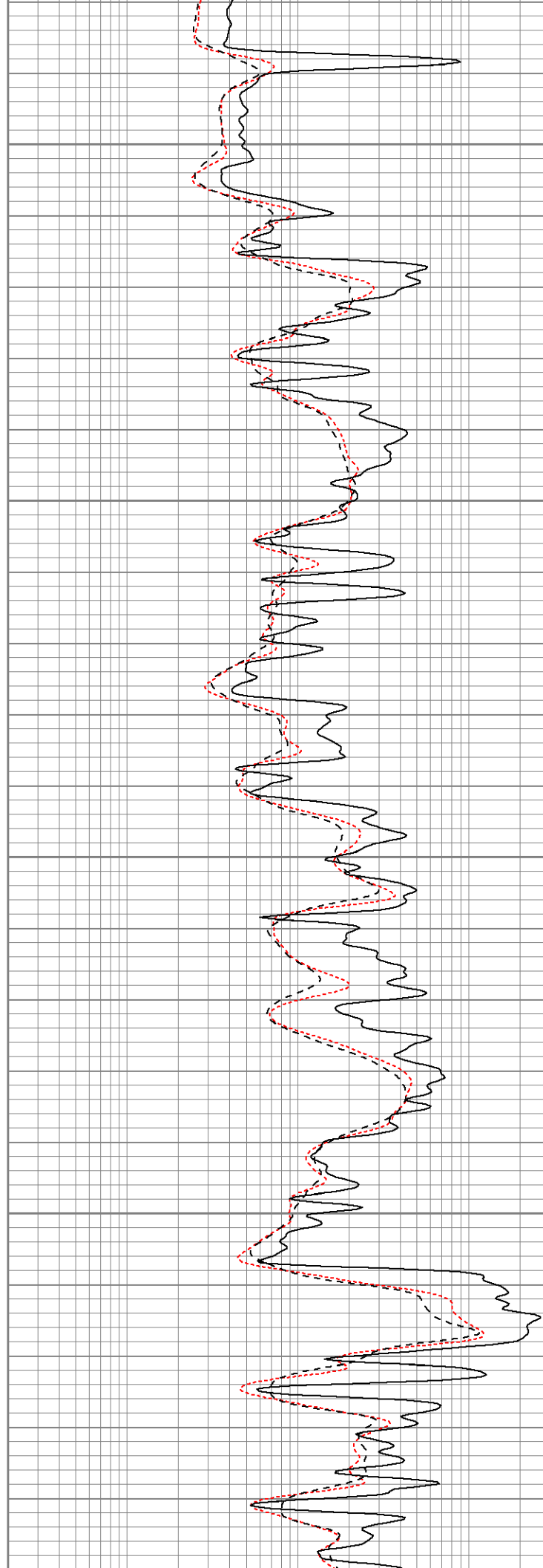
2850

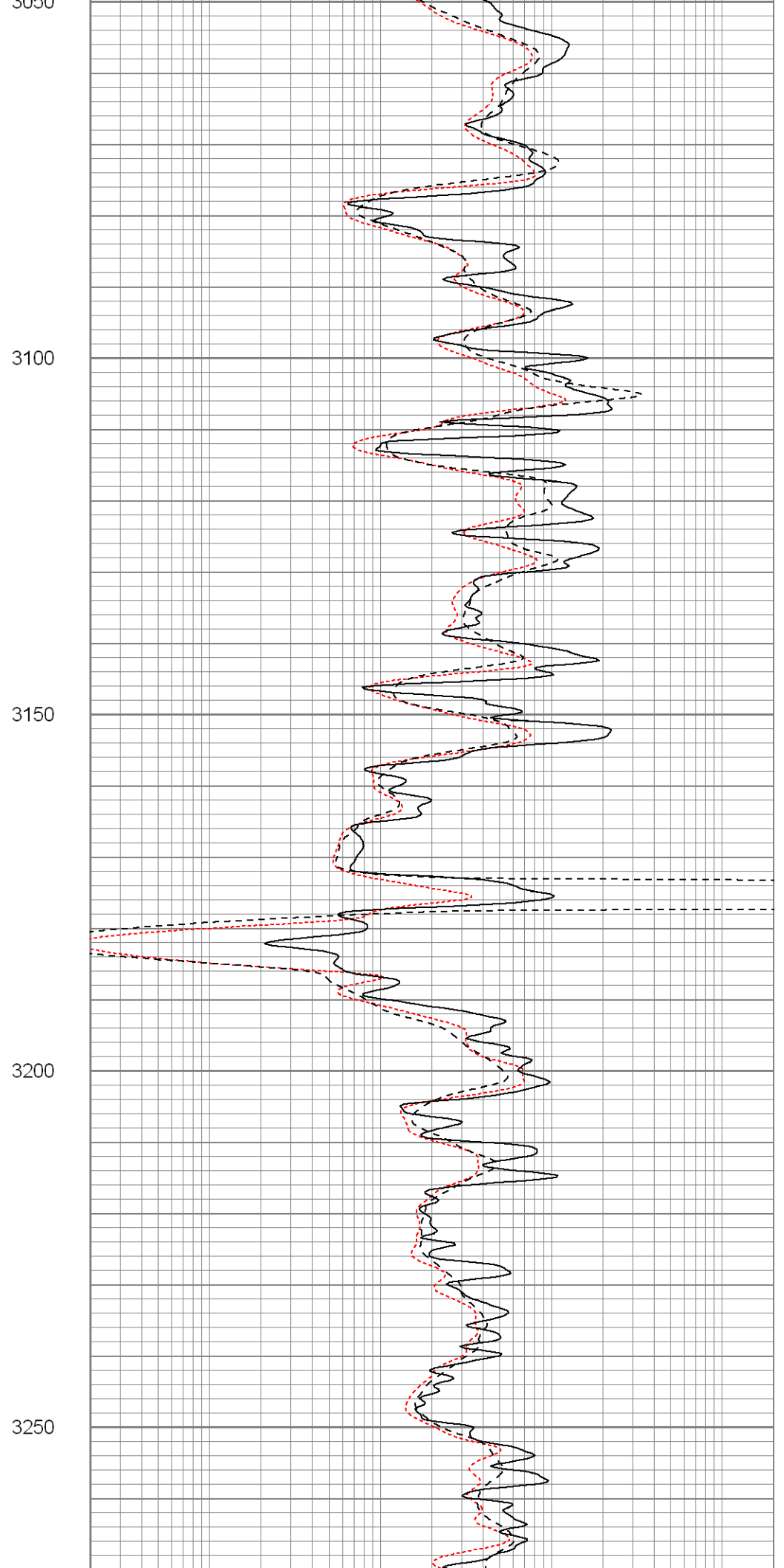
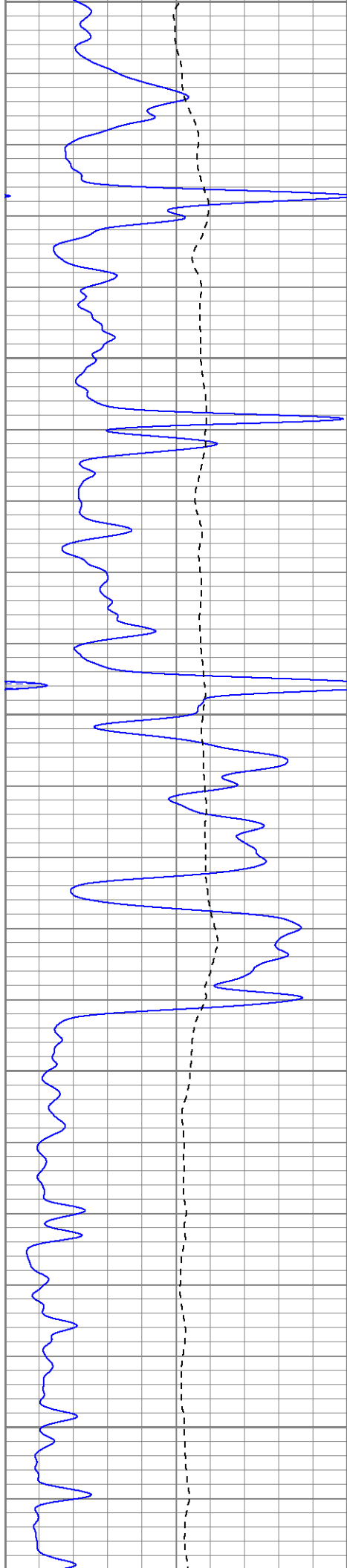
2900

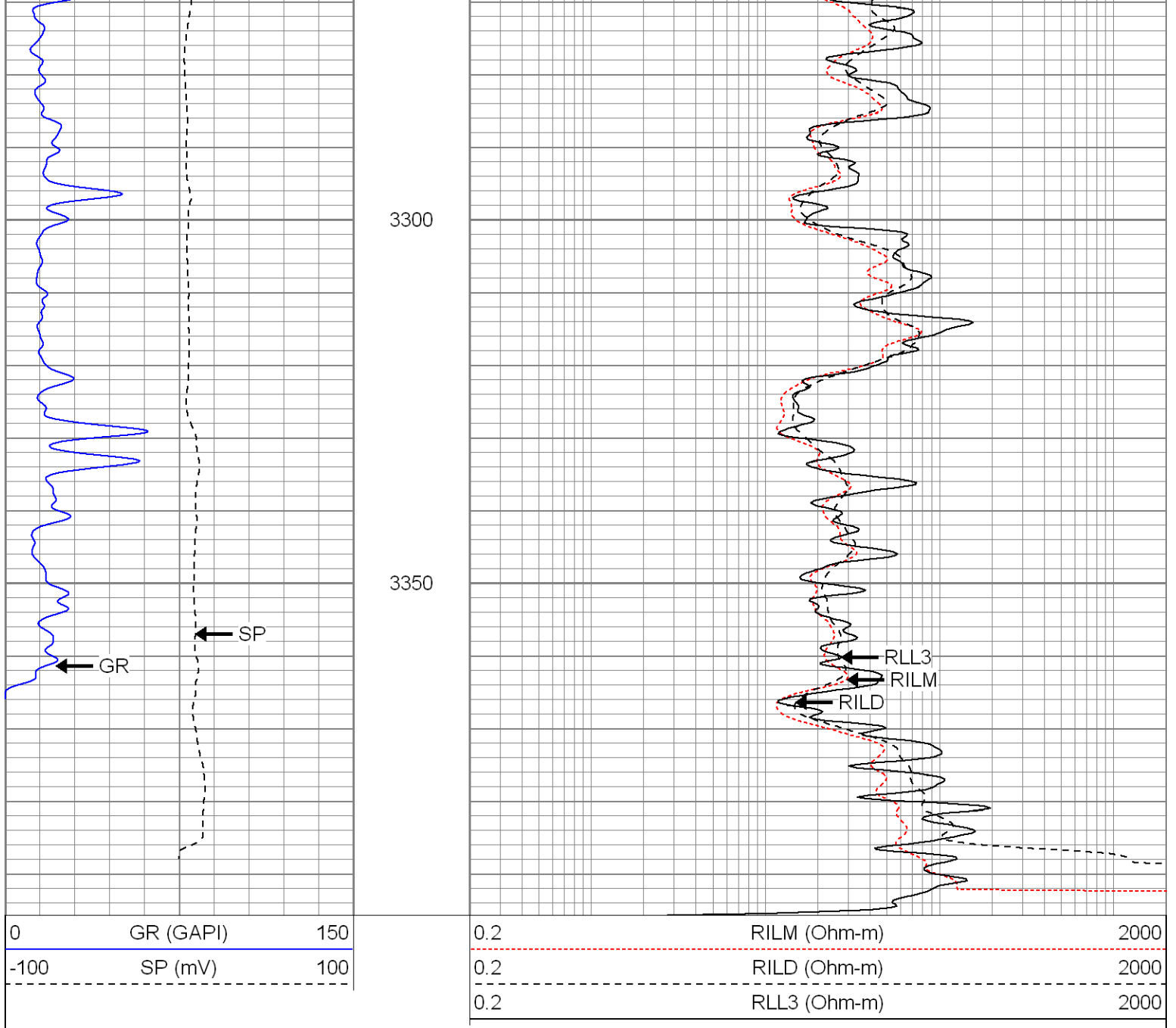
2950

3000

3050



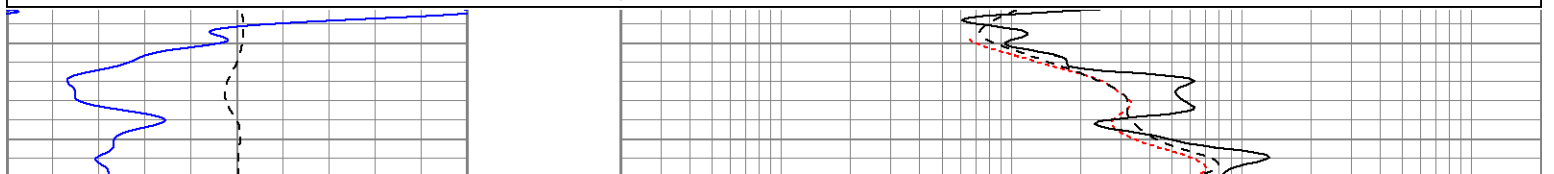


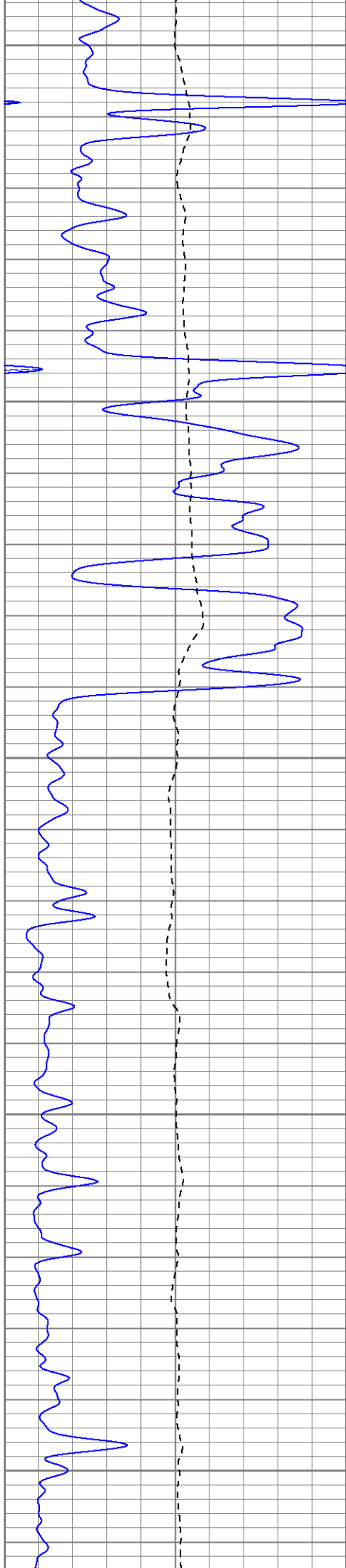


Repeat Section

Database File: crrlfs#1.db
 Dataset Pathname: pass1.1
 Presentation Format: kdil
 Dataset Creation: Mon Oct 11 22:15:22 2010 by Calc Open-Cased 090629
 Charted by: Depth in Feet scaled 1:240

0	GR (GAPI)	150	0.2	RILM (Ohm-m)	2000
-100	SP (mV)	100	0.2	RILD (Ohm-m)	2000
			0.2	RLL3 (Ohm-m)	2000





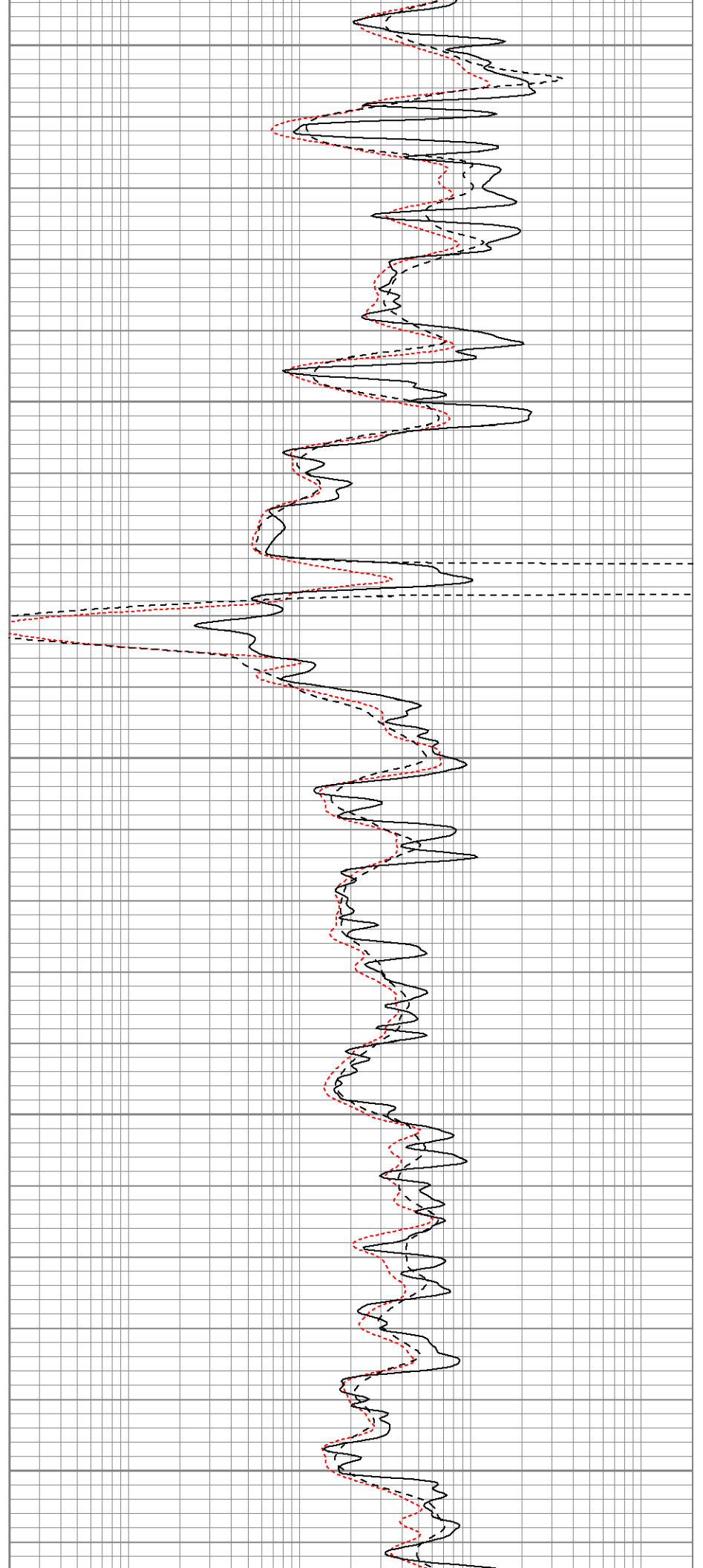
3100

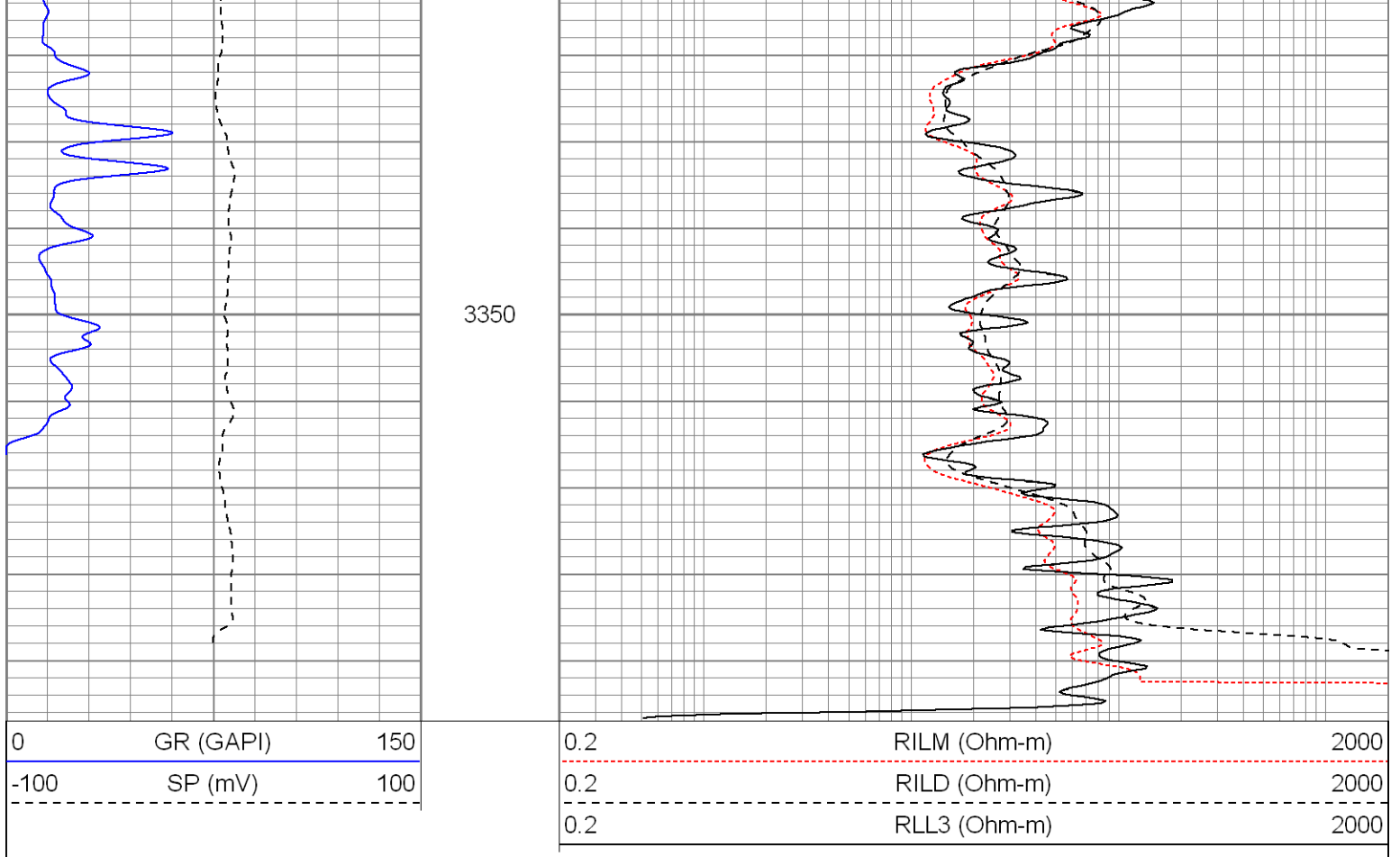
3150

3200

3250

3300





Calibration Report

Database File: crrarfs#1.db
 Dataset Pathname: pass1
 Dataset Creation: Mon Oct 11 20:38:34 2010 by Log Open-Cased 090629

Dual Induction Calibration Report

Serial-Model: 5375-G
 Surface Cal Performed: Fri Oct 01 11:21:18 2010
 Downhole Cal Performed: Fri Oct 01 08:02:56 2010

Surface Calibration

Loop:	Readings			V	References			Results	
	Air	Loop			Air	Loop	mmho/m	m	b
Deep	0.001	0.629			0.000	350.000	mmho/m	557.079	-0.677
Medium	0.005	0.741			0.000	400.000	mmho/m	543.069	-2.519
Internal:	Zero	Cal			Zero	Cal		m	b
Deep	0.002	0.619			0.000	350.000	mmho/m	567.605	-1.168
Medium	0.006	0.742			0.000	550.000	mmho/m	746.640	-4.142

Downhole Calibration

Internal:	Readings			mmho/m	References			Results	
	Zero	Cal			Zero	Cal	mmho/m	m	b
Deep	0.724	490.747	mmho/m	0.670	491.398	mmho/m	1.001	-0.054	
Medium	0.701	600.353	mmho/m	0.741	600.805	mmho/m	1.001	0.039	
Shallow	2.474	0.009	V	500.000	2.000	Ohm-m	199.049	0.500	

Compensated Density Calibration Report

Serial-Model: 2388DHT-DHT
 Source / Verifier: /
 Master Calibration Performed: Thu May 14 07:21:00 2009

Master Calibration

	Density		Far Detector	Near Detector	
Magnesium	1.710	g/cc	748.76	324.94	cps
Aluminum	2.590	g/cc	166.90	227.04	cps
Spine Angle = 76.57			Density/Spine Ratio = 0.570		
	Size		Reading		
Small Ring	8.15	in	5771.32		
Large Ring	14.00	in	10165.20		

Gamma Ray Calibration Report

Serial Number: 2000
 Tool Model: P2000
 Performed: Mon Oct 04 07:29:15 2010

 Calibrator Value: 1.0 GAPI

 Background Reading: 0.0 cps
 Calibrator Reading: 1.0 cps

 Sensitivity: 0.2200 GAPI/cps

Neutron Calibration Report

Serial Number: 5109
 Tool Model: P
 Performed: Mon Sep 20 14:02:28 2010

 Calibrator Value: 1 NAPI

 Calibrator Reading: 1 cps

 Sensitivity: 1 NAPI/cps

Sensor	Offset (ft)	Schematic	Description	Len (ft)	OD (in)	Wt (lb)
NEU	38.96		None	0.75	1.50	5.00
			NEU-P (5109) Probe	4.92	3.63	85.00
GR	32.57		GR-P2000 (2000)	3.67	3.25	40.00
			CDL-DHT (2388DHT) Digital High Temp CDL Tool	9.69	4.00	201.00

LSD	23.78					
DCAL	23.49					
SSD	23.24					
HEADVOLT	21.47					
CILD	10.60					
SP	10.60			DIL-G (5375) Gearhart	21.47	4.00
CILM	6.89					
RLL3	1.70					

Dataset: crrolfs#1.db: field/well/run1/pass1
 Total Length: 40.49 ft
 Total Weight: 676.00 lb
 O.D.: 4.00 in