



**SUPERIOR  
Hays,  
Kansas**

**RADIATION  
GUARD LOG**

Company BAIRD OIL COMPANY, LLC.  
Well SCHEMPER #1-6  
Field SCULL CREEK  
County NORTON State KANSAS

Company BAIRD OIL COMPANY, LLC.  
Well SCHEMPER #1-6  
Field SCULL CREEK  
County NORTON  
State KANSAS

Location: API #: 15-137-20556  
1240' FNL & 740' FWL  
SEC 6 TWP 4S RGE 21W  
Permanent Datum GROUND LEVEL Elevation 2310  
Log Measured From KELLY BUSHING 5' A.G.L.  
Drilling Measured From KELLY BUSHING  
Other Services  
Elevation  
K.B. 2315  
D.F.  
G.L. 2310

Date	4-25-11
Run Number	ONE
Depth Driller	3845
Depth Logger	3846
Bottom Logged Interval	3845
Top Log Interval	00
Casing Driller	221
Casing Logger	221
Bit Size	7.875
Type Fluid in Hole	CHEMICAL MUD
Density / Viscosity	9.3 / 61
pH / Fluid Loss	11.0 / 6.8
Source of Sample	FLOWLINE
Rm @ Meas. Temp	1.40 @ 70F
Rmf @ Meas. Temp	1.05 @ 70F
Rmc @ Meas. Temp	1.68 @ 70F
Source of Rmf / Rmc	MEASURED
Rm @ BHT	.870 @ 113F
Time Circulation Stopped	2 HOURS
Time Logger on Bottom	3:15 P.M.
Maximum Recorded Temperature	113F
Equipment Number	860
Location	HAYS, KS.
Recorded By	RUPP
Witnessed By	RICHARD BELL

<<< Fold Here >>>

All interpretations are opinions based on inferences from electrical or other measurements and we cannot and do not guarantee the accuracy or correctness of any interpretation, and we shall not, except in the case of gross or willful negligence on our part, be liable or responsible for any loss, costs, damages, or expenses incurred or sustained by anyone resulting from any interpretation made by any of our officers, agents or employees. These interpretations are also subject to our general terms and conditions set out in our current Price Schedule.

Comments

SUPERIOR WELL SERVICES  
785-628-6395  
THANK YOU FOR YOUR BUSINESS  
DIRECTIONS: LOGAN, W TO RD. E9, 6N TO "S" RD., 1/2W, S INTO.

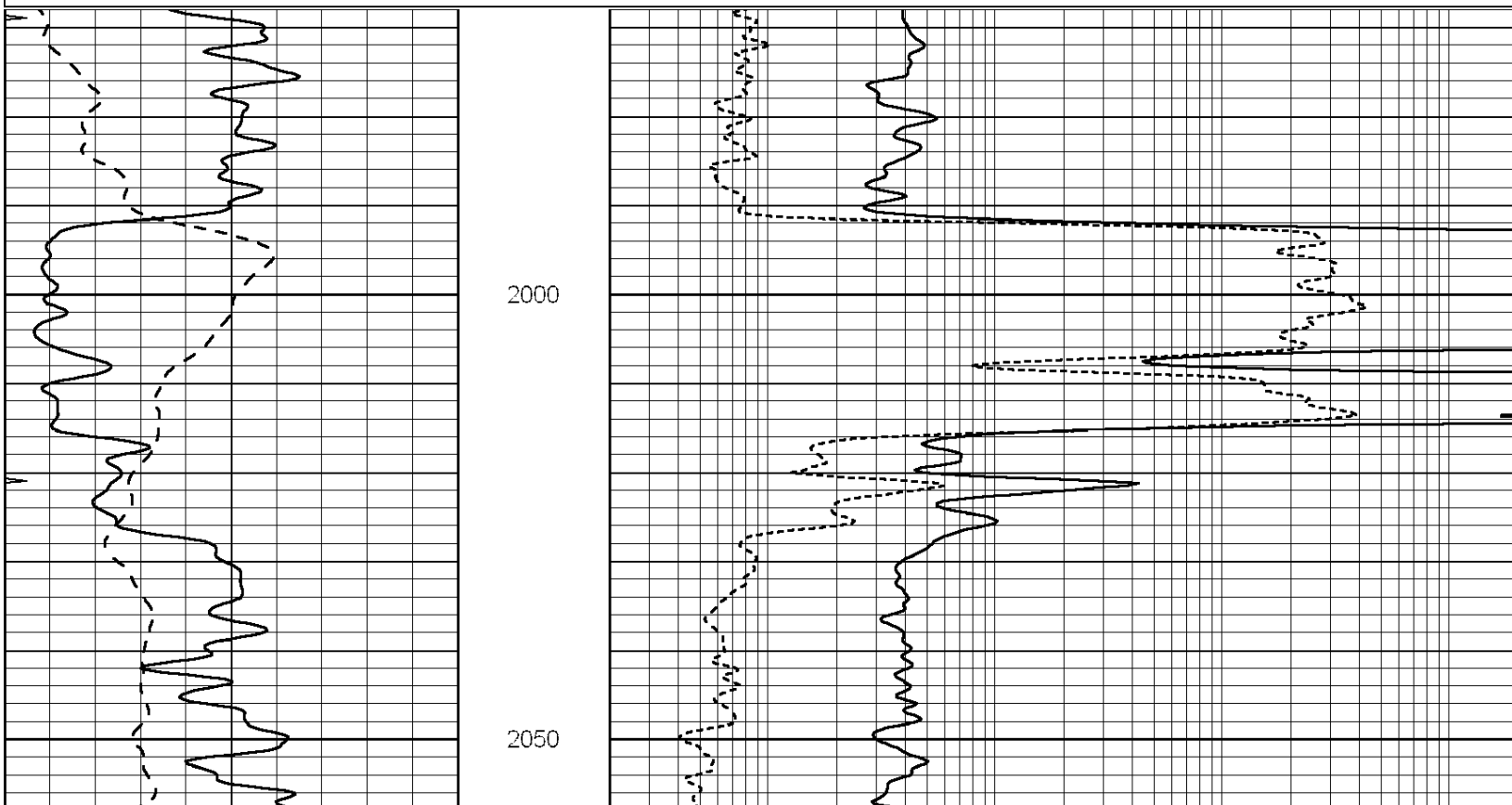


**SUPERIOR  
Hays,  
Kansas**

**MAIN SECTION**

Database File: 006908rag.db  
 Dataset Pathname: pass4.A  
 Presentation Format: rag2  
 Dataset Creation: Mon Apr 25 16:34:23 2011  
 Charted by: Depth in Feet scaled 1:240

0	GAMMA RAY (GAPI)	150	ABHV (ft3)	0.2	GUARD (Ohm-m)	2000
-100	SP (mV)	100		0	NEUTRON (NAPI)	1000
-----			TBHV (ft3)	-----		



0	GAMMA RAY (GAPI)	150	ABHV (ft3)	0.2	GUARD (Ohm-m)	2000
-100	SP (mV)	100		0	NEUTRON (NAPI)	1000
-----			TBHV (ft3)	-----		

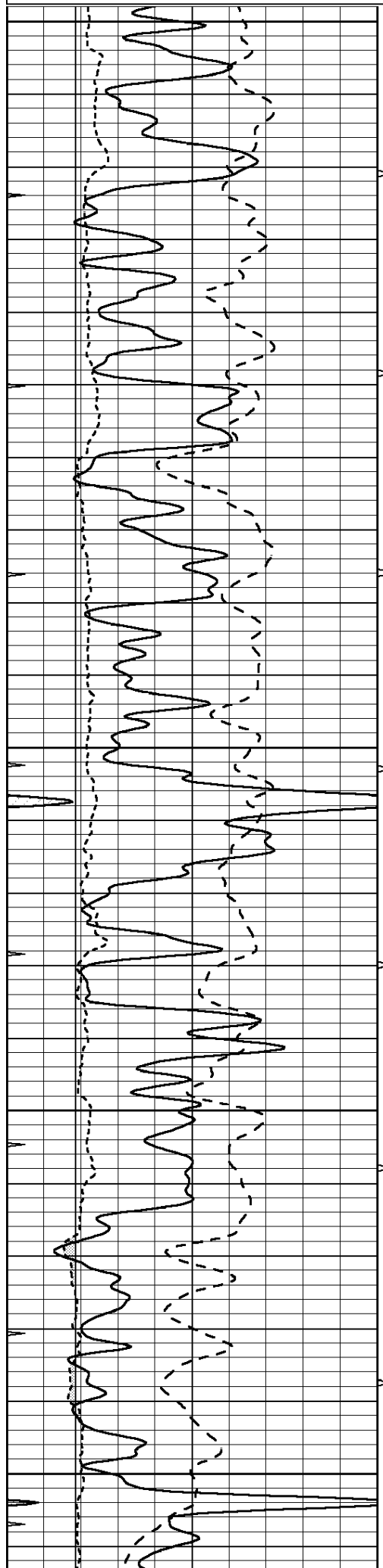


SUPERIOR  
 Hays,  
 Kansas

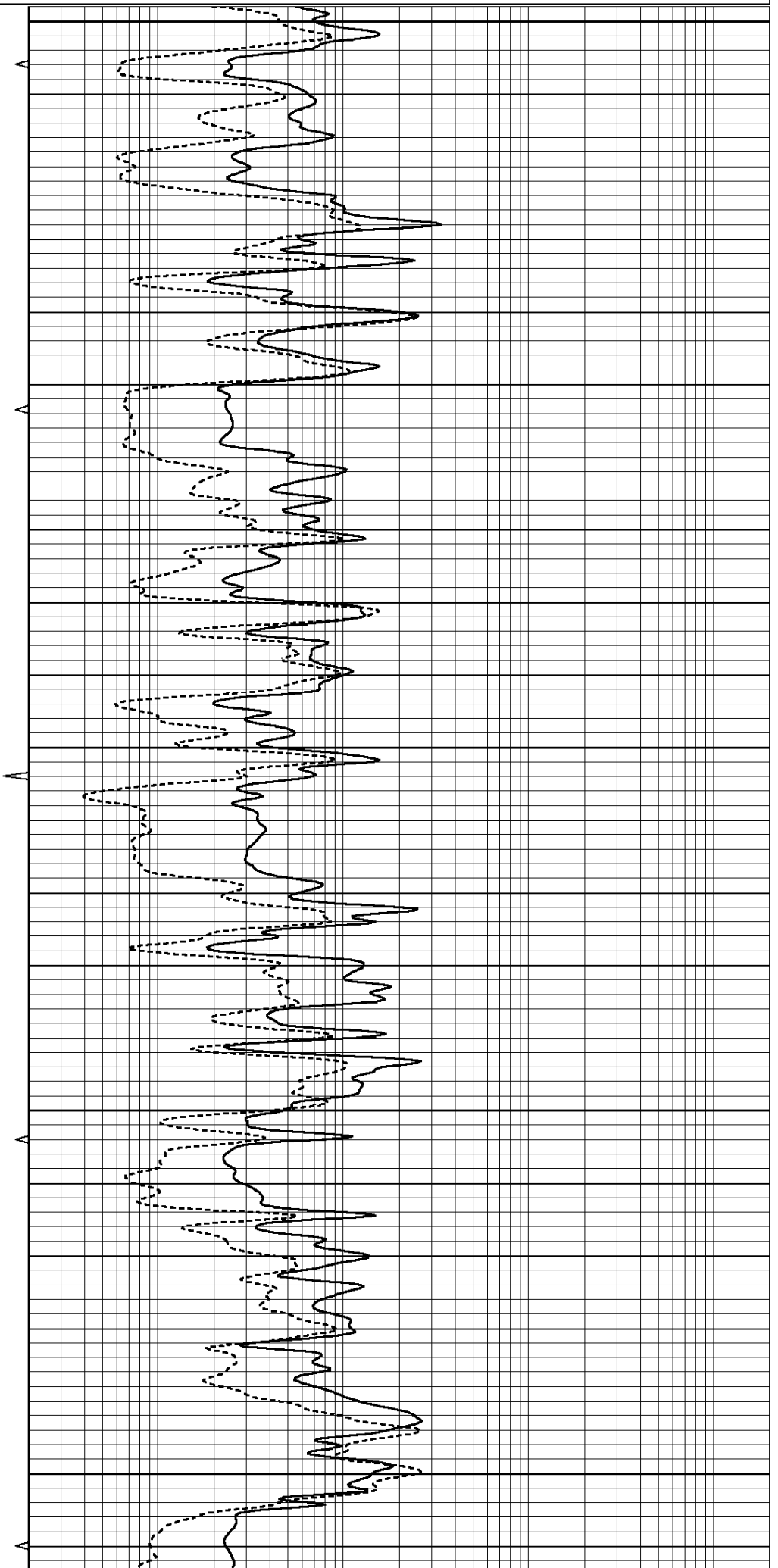
# MAIN SECTION

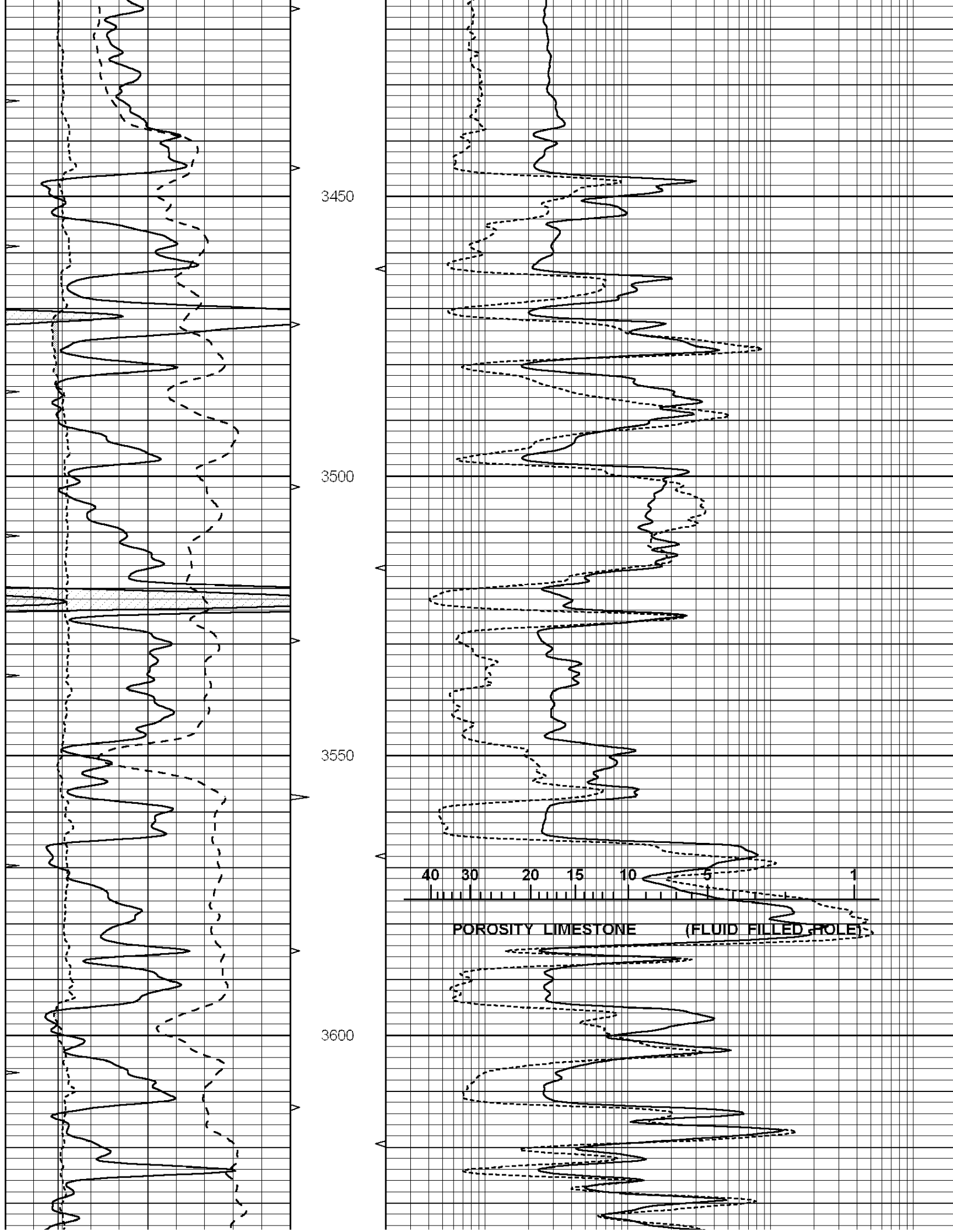
Database File: 006908rag.db  
 Dataset Pathname: pass4.A  
 Presentation Format: rag  
 Dataset Creation: Mon Apr 25 16:34:23 2011  
 Charted by: Depth in Feet scaled 1:240

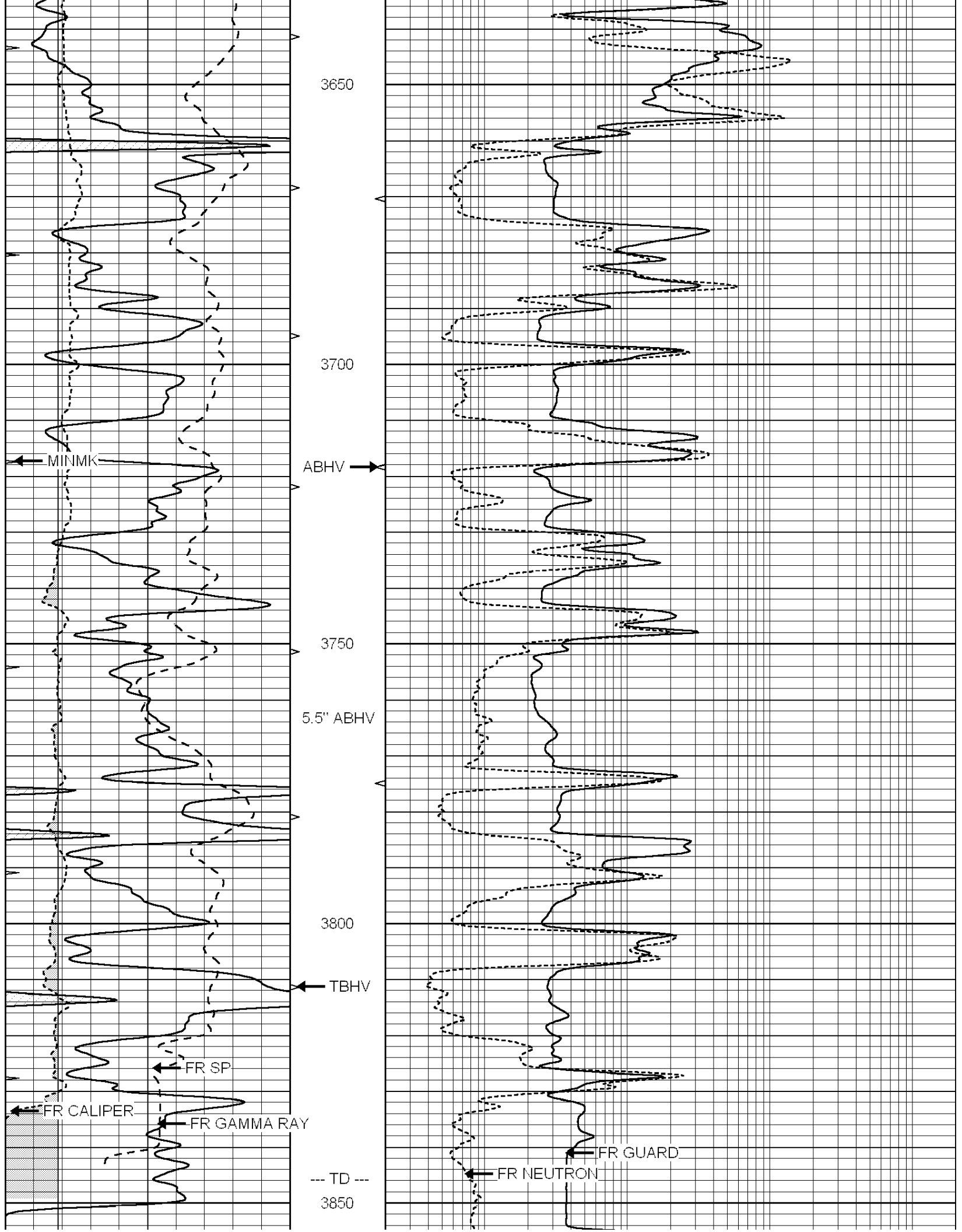
0	GAMMA RAY (GAPI)	150	ABHV	0.2	GUARD (Ohm-m)	2000
-100	SP (mV)	100	10 (ft3) 0	0	NEUTRON (NAPI)	1000
6	CALIPER (in)	16	TBHV	-----		
-----			0 (ft3) 10	-----		



3200  
3250  
3300  
3350  
3400







0	GAMMA RAY (GAPI)	150	ABHV	0.2	GUARD (Ohm-m)	2000
-100	SP (mV)	100	10 (ft3)	0	NEUTRON (NAPI)	1000
6	CALIPER (in)	16	TBHV			
			0 (ft3)	10		

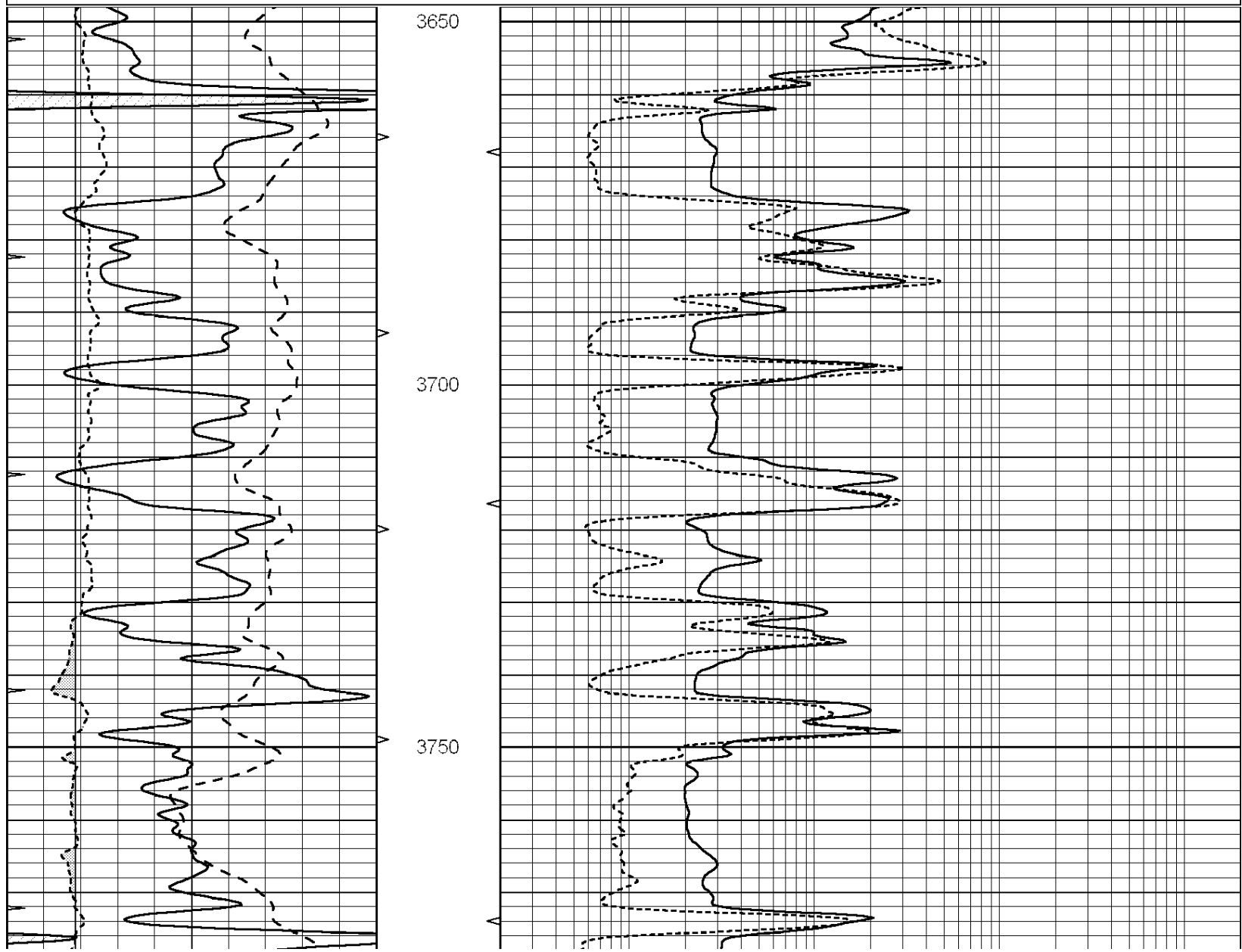


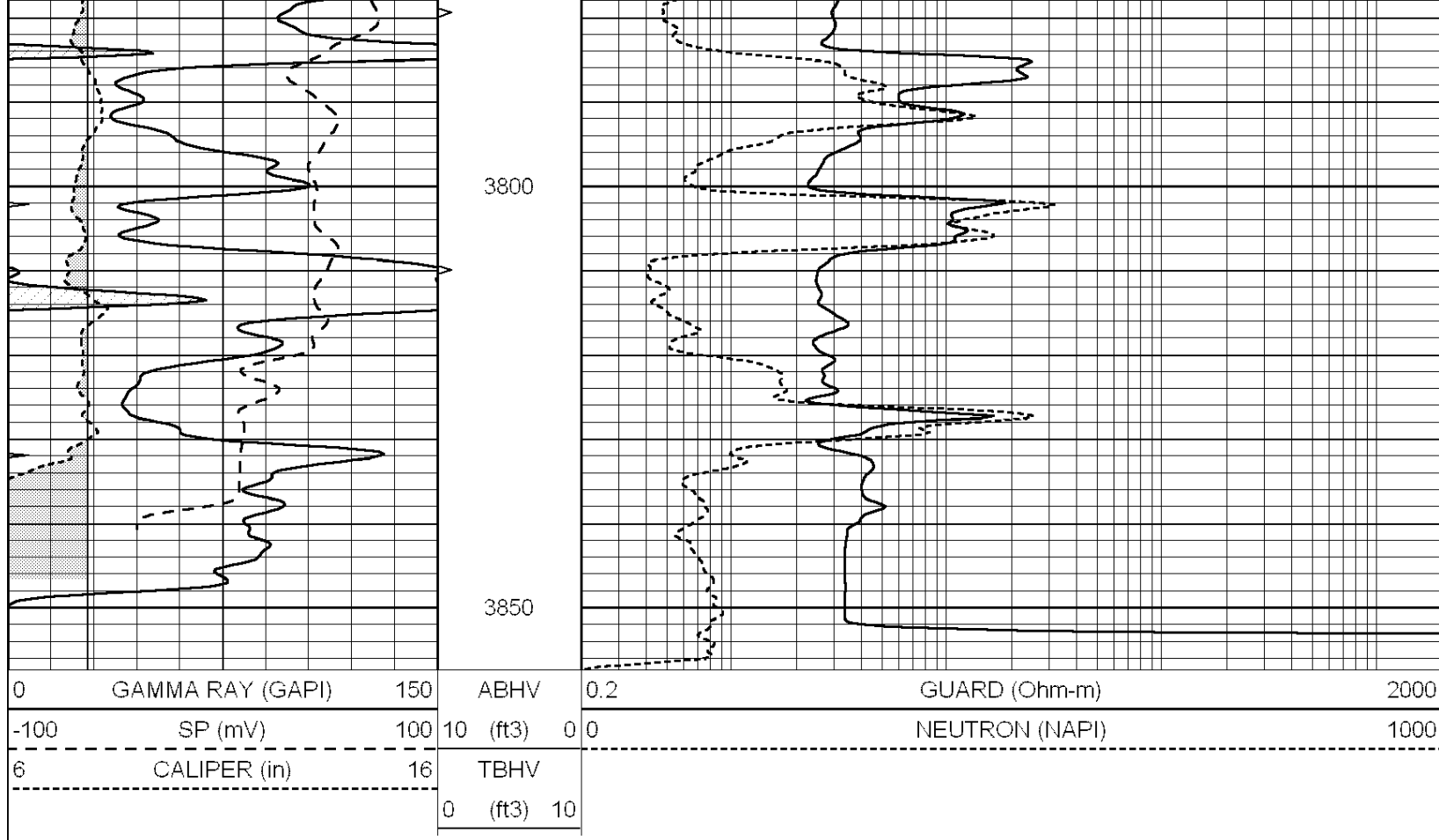
SUPERIOR  
Hays,  
Kansas

# REPEAT SECTION

Database File: 006908rag.db  
 Dataset Pathname: pass3.A  
 Presentation Format: rag  
 Dataset Creation: Mon Apr 25 16:22:50 2011 by Calc Open-Cased 090629  
 Charted by: Depth in Feet scaled 1:240

0	GAMMA RAY (GAPI)	150	ABHV	0.2	GUARD (Ohm-m)	2000
-100	SP (mV)	100	10 (ft3)	0	NEUTRON (NAPI)	1000
6	CALIPER (in)	16	TBHV			
			0 (ft3)	10		





### Calibration Report

Database File: 006908rag.db  
 Dataset Pathname: pass4.A  
 Dataset Creation: Mon Apr 25 16:34:23 2011

### Neutron Calibration Report

Serial Number: RAG1  
 Tool Model: RAG  
 Performed: Mon Apr 25 14:41:39 2011

Calibrator Values: 0 1 NAPI  
 Calibrator Readings: 0 1 cps

Sensitivity: 1.2 NAPI/cps

### Micro Spherically Focused Log Calibration Report

Serial-Model: RAG1-A  
 Performed: Mon Apr 25 16:26:16 2011

	Readings			References			Results	
	Low	High		Low	High		m	b
Conductivity	0.0110	0.9000	V	10.0000	1000.0000	mmho	1900.0000	-7.0000
Caliper	0.1837	0.3151	V	8.0000	16.0000	in	60.9046	-3.1888

### Gamma Ray Calibration Report

Serial Number: RAG1  
 Tool Model: RAG  
 Performed: Mon Apr 25 14:41:28 2011

Calibrator Value: 1.0 GAPI

Background Reading:	0.9	cps
Calibrator Reading:	1.0	cps
Sensitivity:	1.8000	GAPI/cps