



**SUPERIOR  
Hays,  
Kansas**

**MICRO  
LOG**

Company BAIRD OIL COMPANY, LLC  
Well HANSEN FOUNDATION #1-13  
Field  
County NORTON  
State KANSAS

Company BAIRD OIL COMPANY, LLC  
Well HANSEN FOUNDATION #1-13  
Field  
County NORTON State KANSAS

Location: API #: 15-137-20654  
2500' FSL & 420' FWL  
SEC 13 TWP 4S RGE 22W  
Permanent Datum GROUND LEVEL Elevation 2208  
Log Measured From KELLY BUSHING 5' A.G.L.  
Drilling Measured From KELLY BUSHING  
Other Services  
RAG  
Elevation  
K.B. 2213  
D.F.  
G.L. 2208

Date	5-20-11
Run Number	TW0
Depth Driller	3679
Depth Logger	3679
Bottom Logged Interval	3676
Top Log Interval	3000
Casing Driller	220
Casing Logger	220
Bit Size	7.875
Type Fluid in Hole	CHEMICAL MUD
Density / Viscosity	9.2 / 62
pH / Fluid Loss	10.5 / 6.5
Source of Sample	FLOWLINE
Rm @ Meas. Temp	1.20 @ 79F
Rmf @ Meas. Temp	0.90 @ 79F
Rmc @ Meas. Temp	1.44 @ 79F
Source of Rmf / Rmc	MEASURED
Rm @ BHT	.850 @ 111F
Time Circulation Stopped	2 HOURS
Time Logger on Bottom	11:30 P.M.
Maximum Recorded Temperature	111F
Equipment Number	860
Location	HAYS, KS.
Recorded By	RUPP
Witnessed By	RICHARD BELL

<<< Fold Here >>>

All interpretations are opinions based on inferences from electrical or other measurements and we cannot and do not guarantee the accuracy or correctness of any interpretation, and we shall not, except in the case of gross or willful negligence on our part, be liable or responsible for any loss, costs, damages, or expenses incurred or sustained by anyone resulting from any interpretation made by any of our officers, agents or employees. These interpretations are also subject to our general terms and conditions set out in our current Price Schedule.

**Comments**

SUPERIOR WELL SERVICES  
785-628-6395  
THANK YOU FOR YOUR BUSINESS  
DIRECTIONS: GLADE, W TO RD. #6, 5N TO RD. "U", 1E, S INTO.



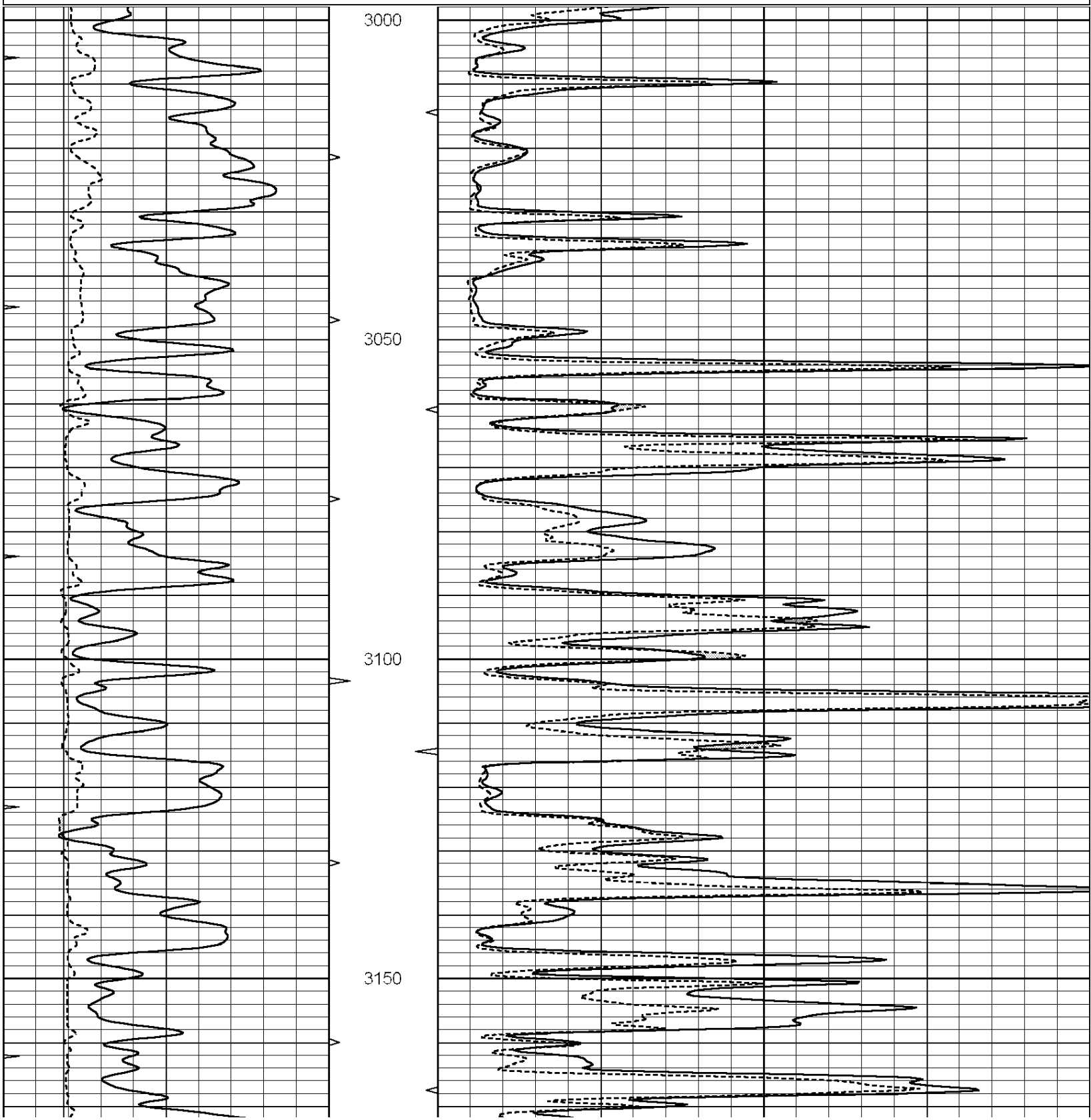
**SUPERIOR  
Hays,  
Kansas**

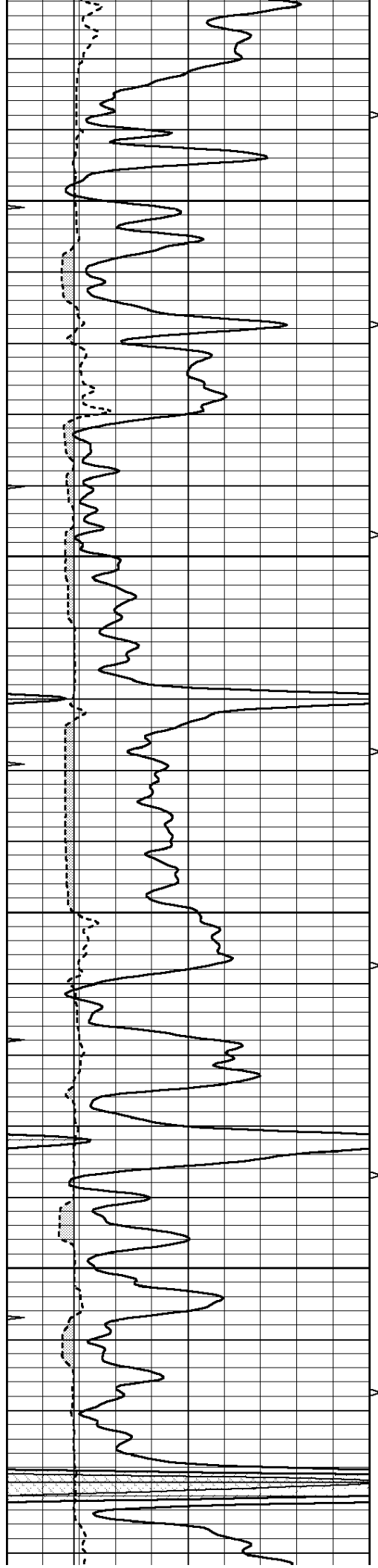
**MAIN SECTION**

Database File: 006922rag.db  
 Dataset Pathname: pass6.1  
 Presentation Format: micro  
 Dataset Creation: Fri May 20 01:32:10 2011  
 Charted by: Depth in Feet scaled 1:240

0	GAMMA RAY (GAPI)	150
6	MELCAL (in)	16
0	MINMK	20

0	MEL1.5 (Ohm-m)	40
0	MEL2.0 (Ohm-m)	40



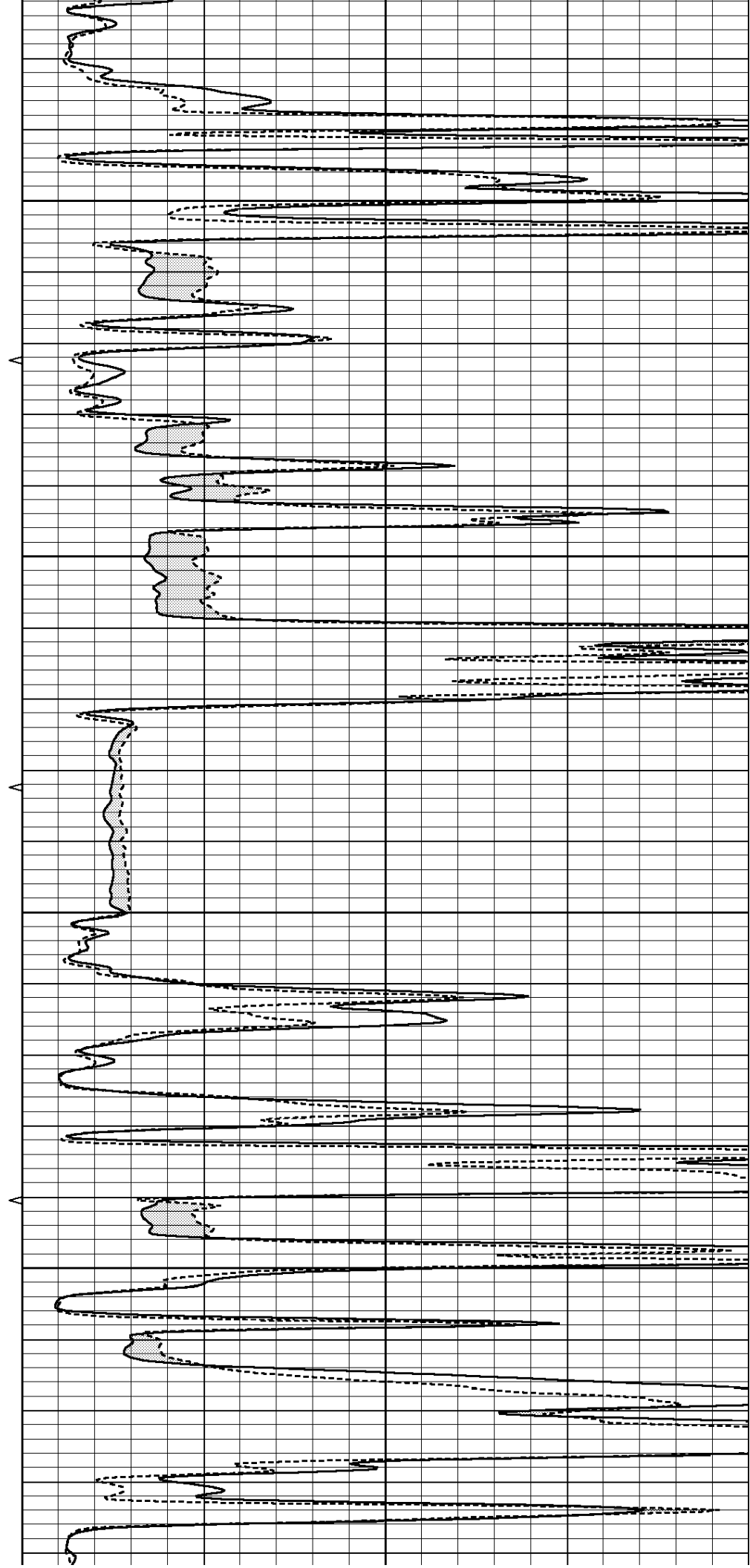


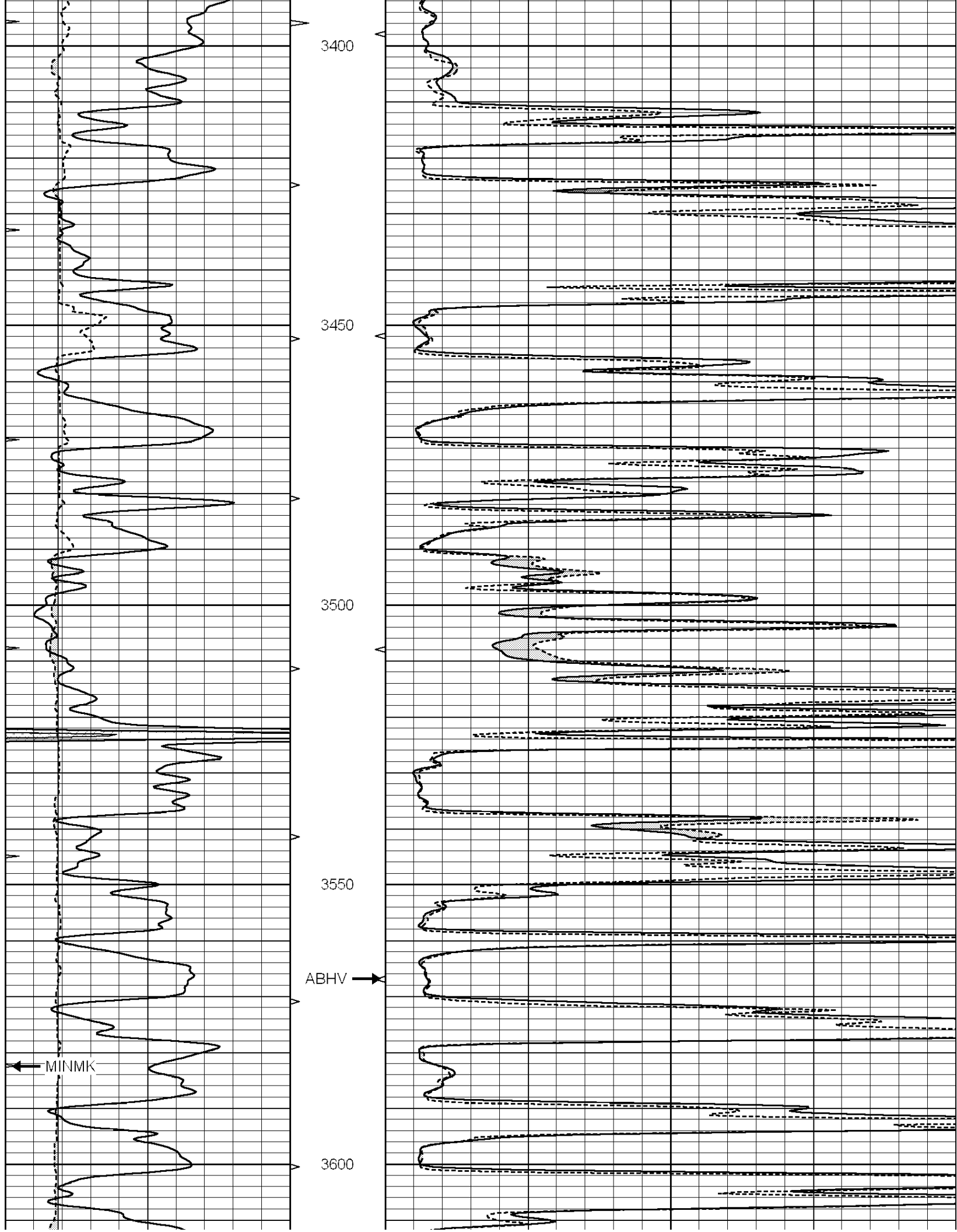
3200

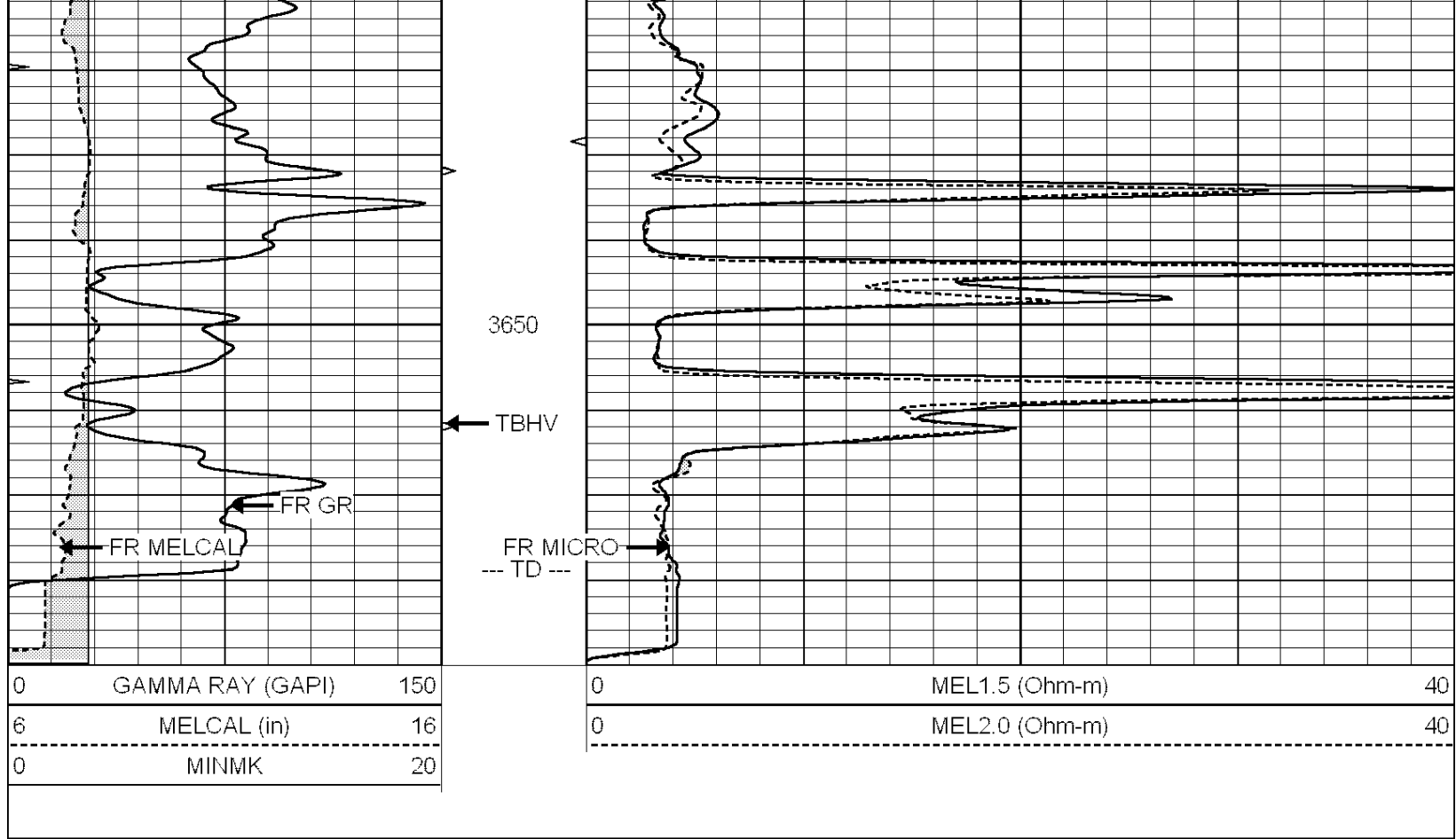
3250

3300

3350





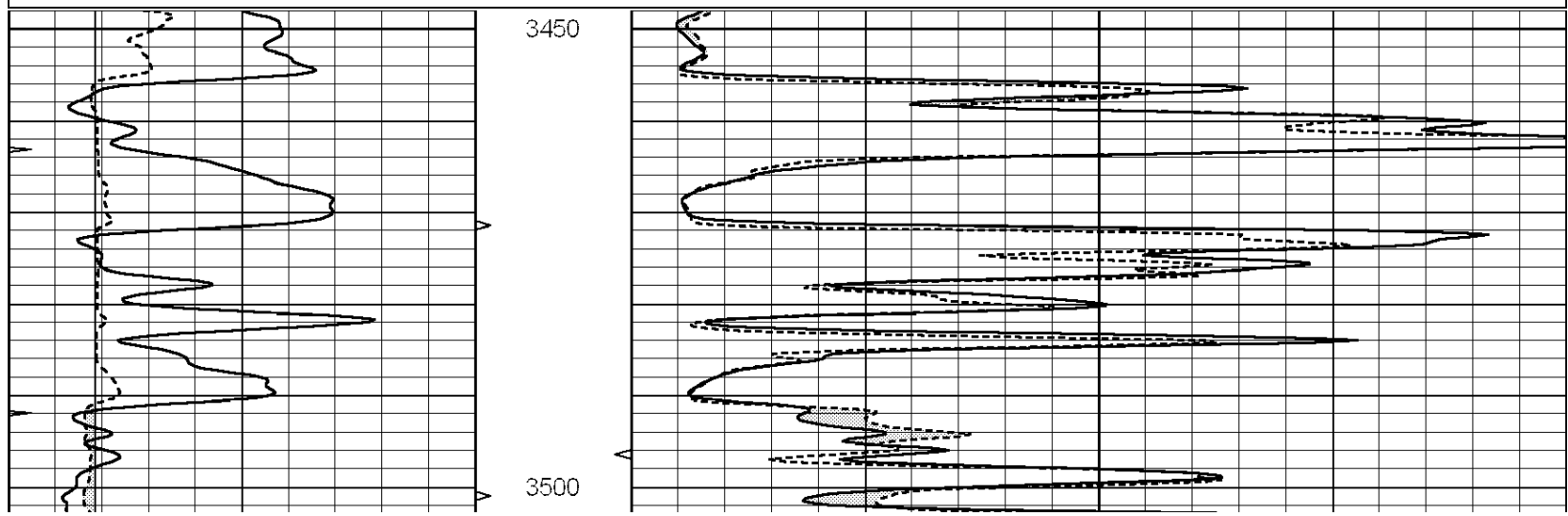


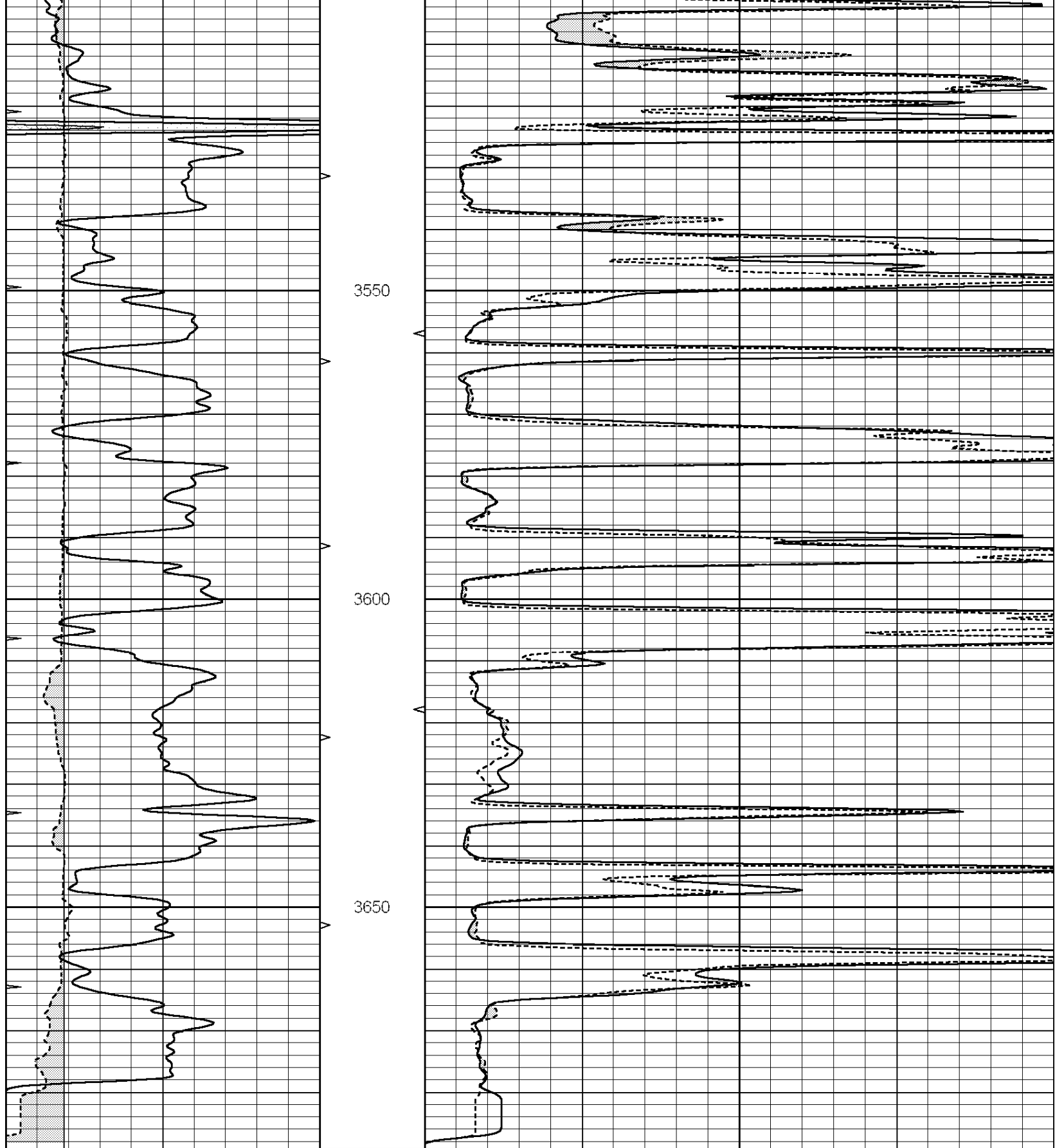
SUPERIOR  
Hays,  
Kansas

# REPEAT SECTION

Database File: 006922rag.db  
 Dataset Pathname: pass5.1  
 Presentation Format: micro  
 Dataset Creation: Fri May 20 00:59:35 2011 by Calc Open-Cased 090629  
 Charted by: Depth in Feet scaled 1:240

0	GAMMA RAY (GAPI)	150	0	MEL1.5 (Ohm-m)	40
6	MELCAL (in)	16	0	MEL2.0 (Ohm-m)	40
0	MINMK	20			





0	GAMMA RAY (GAPI)	150
6	MELCAL (in)	16
0	MINMK	20

0	MEL1.5 (Ohm-m)	40
0	MEL2.0 (Ohm-m)	40

Calibration Report

MICRO Calibration Report

Serial Number: Micro1  
Tool Model: ProbeL  
Performed: Sat May 14 10:07:57 2011

Caliper Calibration: Gain=2.650 Offset=-0.669  
References Low Cal High Cal  
7.900 13.000  
Readings 3.233 5.157

1.5" Calibration: Gain=38.000 Offset=-0.100  
References Low Cal High Cal  
0.000 20.000  
Readings 0.003 0.844

2" Calibration: Gain=34.000 Offset=-0.300  
References Low Cal High Cal  
0.000 20.000  
Readings 0.028 0.817

Gamma Ray Calibration Report

Serial Number: GR5  
Tool Model: OPEN  
Performed: Fri May 20 00:51:20 2011

Calibrator Value: 1.0 GAPI  
Background Reading: 0.0 cps  
Calibrator Reading: 1.0 cps  
Sensitivity: 0.6900 GAPI/cps