



**SUPERIOR  
Hays,  
Kansas**

**RADIATION  
GUARD LOG**

Company BAIRD OIL COMPANY, LLC  
Well HANSEN FOUNDATION #1-13  
Field  
County NORTON  
State KANSAS

Company BAIRD OIL COMPANY, LLC  
Well HANSEN FOUNDATION #1-13  
Field  
County NORTON State KANSAS

Location: API #: 15-137-20654  
2500' FSL & 420' FWL  
SEC 13 TWP 4S RGE 22W  
Permanent Datum GROUND LEVEL Elevation 2208  
Log Measured From KELLY BUSHING 5' A.G.L.  
Drilling Measured From KELLY BUSHING  
Other Services  
MICRO  
Elevation  
K.B. 2213  
D.F.  
G.L. 2208

Date	5-20-11
Run Number	ONE
Depth Driller	3679
Depth Logger	3679
Bottom Logged Interval	3678
Top Log Interval	00
Casing Driller	220
Casing Logger	220
Bit Size	7.875
Type Fluid in Hole	CHEMICAL MUD
Density / Viscosity	9.2 / 62
pH / Fluid Loss	10.5 / 6.5
Source of Sample	FLOWLINE
Rm @ Meas. Temp	1.20 @ 79F
Rmf @ Meas. Temp	0.90 @ 79F
Rmc @ Meas. Temp	1.44 @ 79F
Source of Rmf / Rmc	MEASURED
Rm @ BHT	.850 @ 111F
Time Circulation Stopped	2 HOURS
Time Logger on Bottom	11:30 P.M.
Maximum Recorded Temperature	111F
Equipment Number	860
Location	HAYS, KS.
Recorded By	RUPP
Witnessed By	RICHARD BELL

<<< Fold Here >>>

All interpretations are opinions based on inferences from electrical or other measurements and we cannot and do not guarantee the accuracy or correctness of any interpretation, and we shall not, except in the case of gross or willful negligence on our part, be liable or responsible for any loss, costs, damages, or expenses incurred or sustained by anyone resulting from any interpretation made by any of our officers, agents or employees. These interpretations are also subject to our general terms and conditions set out in our current Price Schedule.

Comments

SUPERIOR WELL SERVICES  
785-628-6395  
THANK YOU FOR YOUR BUSINESS  
DIRECTIONS: GLADE, W TO RD. #6, 5N TO RD. "U", 1E, S INTO.

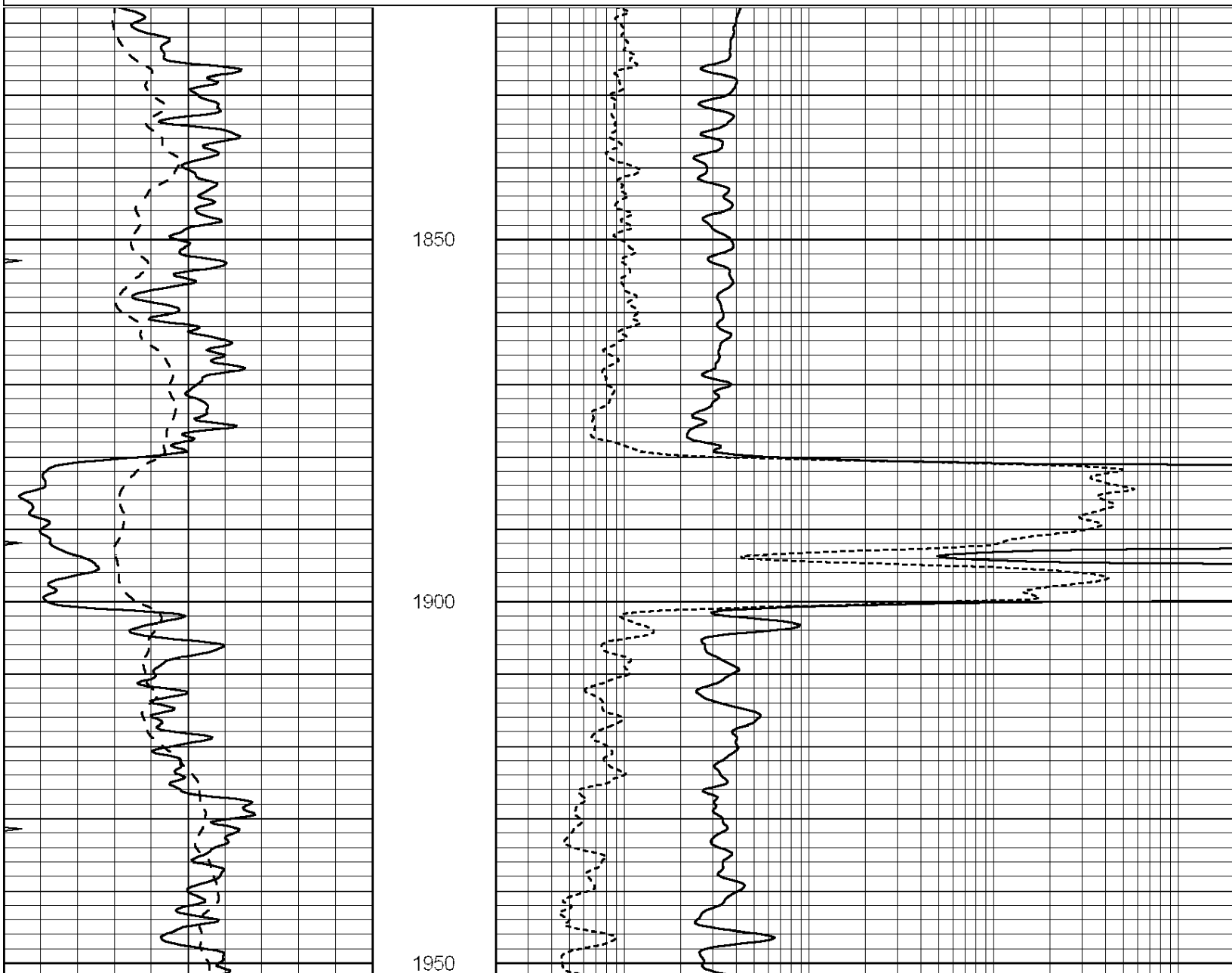


**SUPERIOR  
Hays,  
Kansas**

**MAIN SECTION**

Database File: 006922rag.db  
 Dataset Pathname: pass4.A  
 Presentation Format: rag2  
 Dataset Creation: Fri May 20 00:43:49 2011  
 Charted by: Depth in Feet scaled 1:240

0	GAMMA RAY (GAPI)	150	ABHV (ft3)	0.2	GUARD (Ohm-m)	2000
-100	SP (mV)	100		0	NEUTRON (NAPI)	1000
-----			TBHV (ft3)	-----		



0	GAMMA RAY (GAPI)	150	ABHV (ft3)	0.2	GUARD (Ohm-m)	2000
-100	SP (mV)	100		0	NEUTRON (NAPI)	1000
-----			TBHV (ft3)	-----		

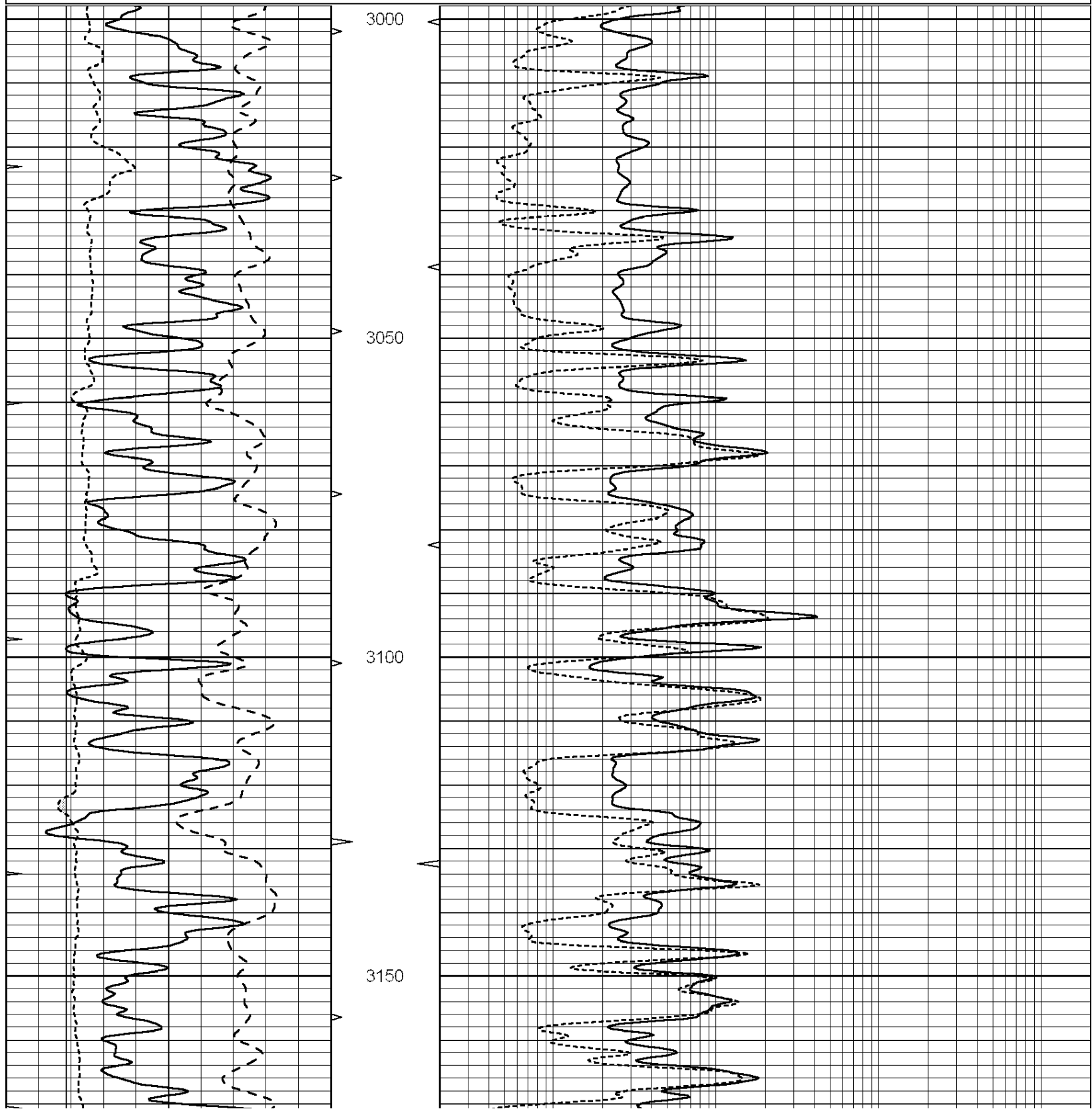


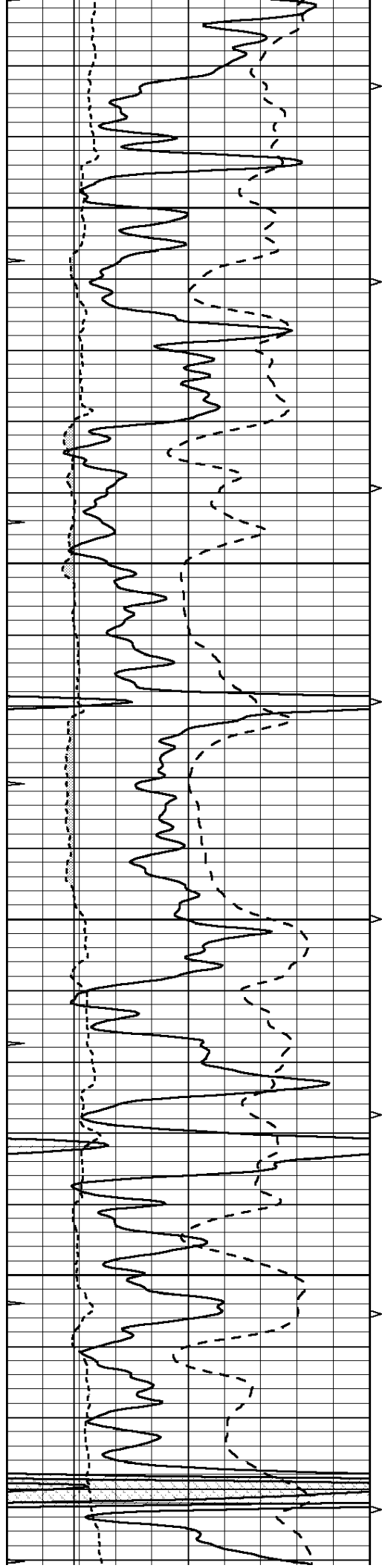
SUPERIOR  
Hays,

# MAIN SECTION

Database File: 006922rag.db  
Dataset Pathname: pass4.A  
Presentation Format: rag  
Dataset Creation: Fri May 20 00:43:49 2011  
Charted by: Depth in Feet scaled 1:240

0	GAMMA RAY (GAPI)	150	ABHV	0.2	GUARD (Ohm-m)	2000
-100	SP (mV)	100	10 (ft3)	0	NEUTRON (NAPI)	1000
6	CALIPER (in)	16	TBHV			
			0 (ft3)	10		



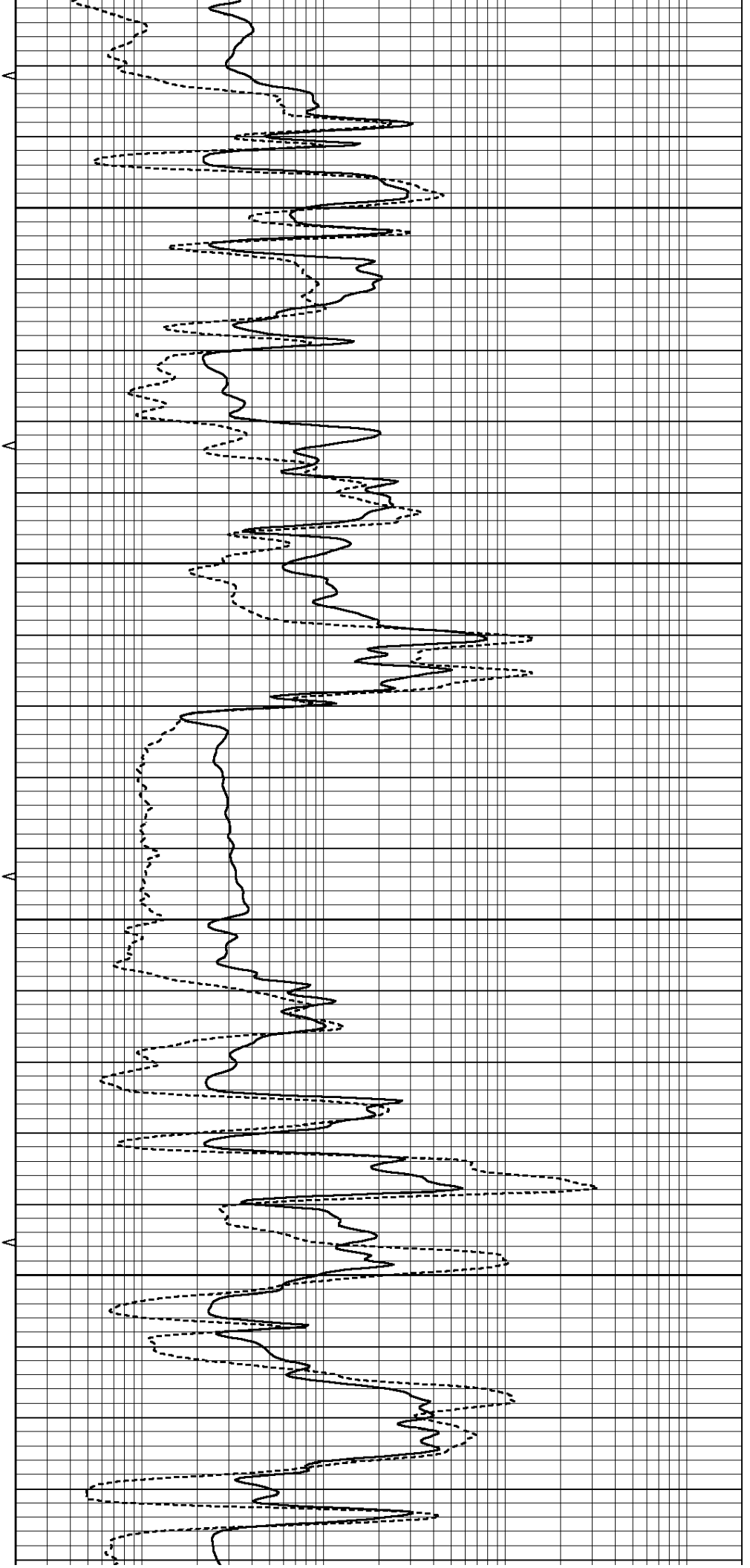


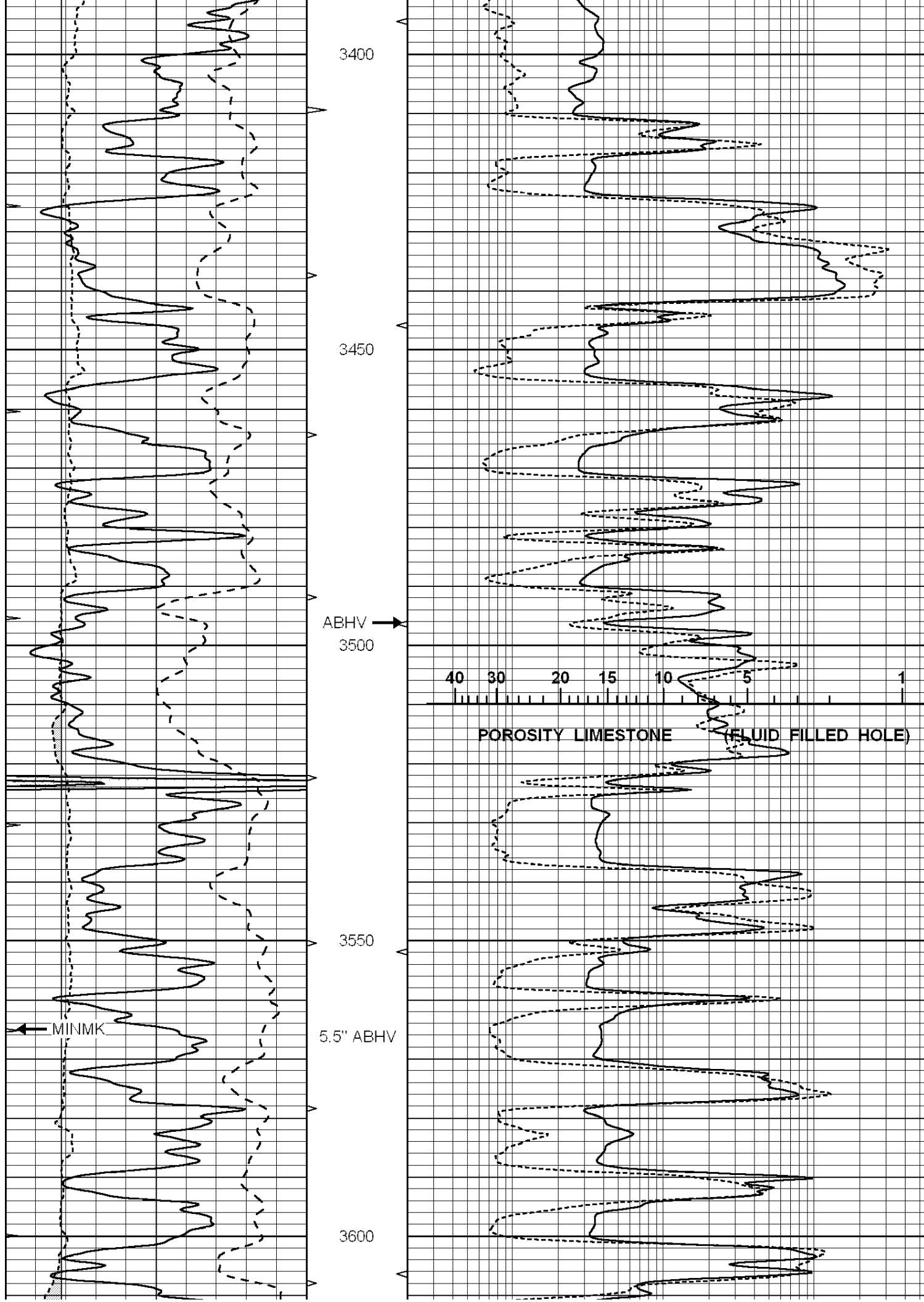
3200

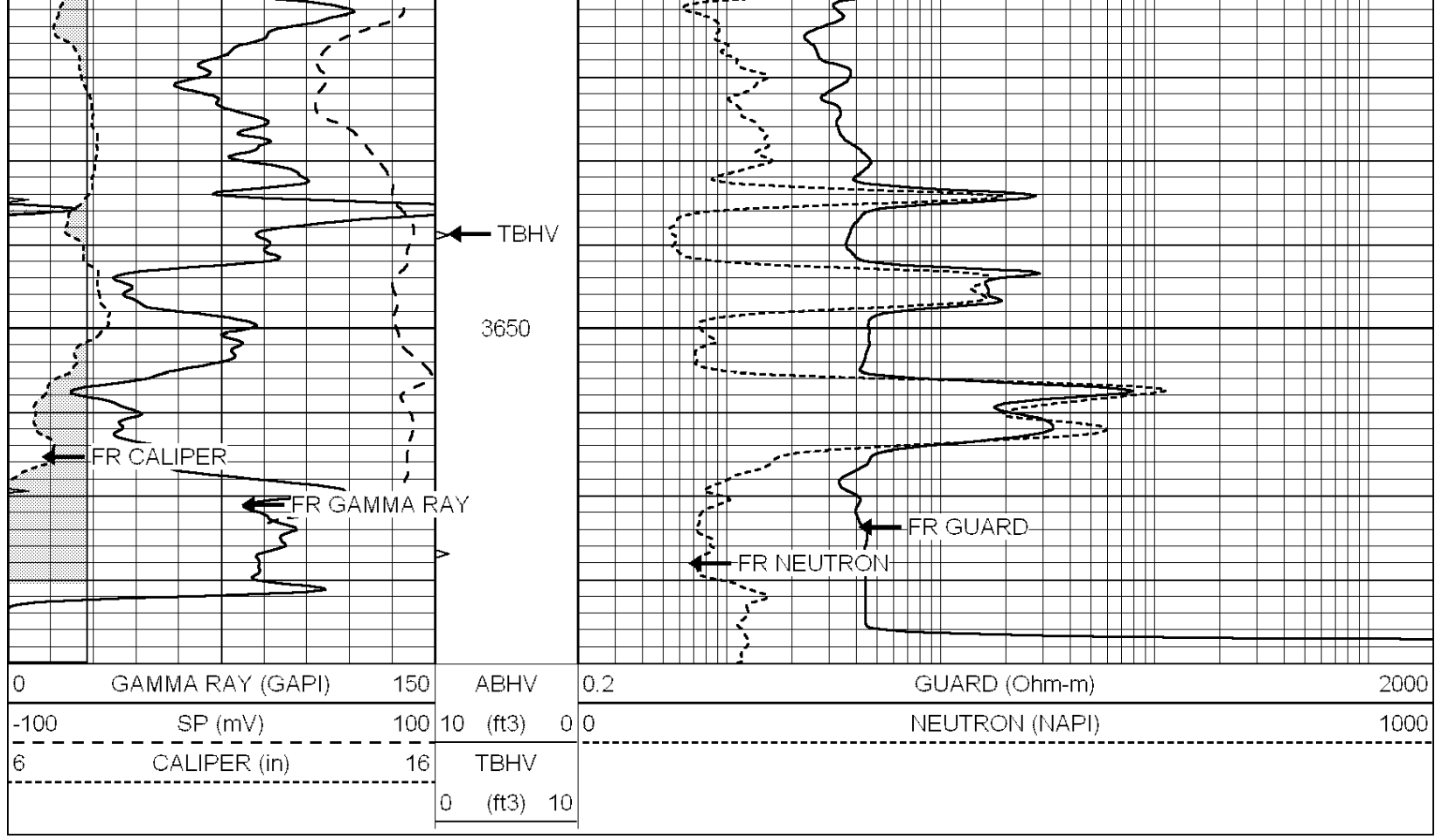
3250

3300

3350





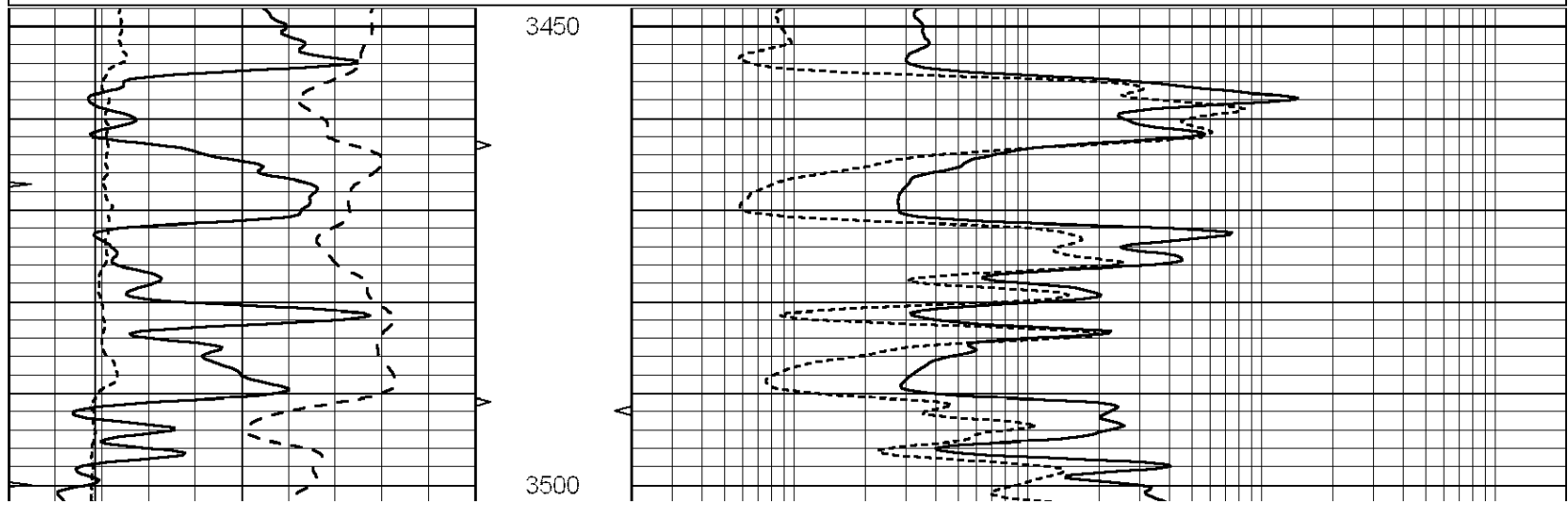


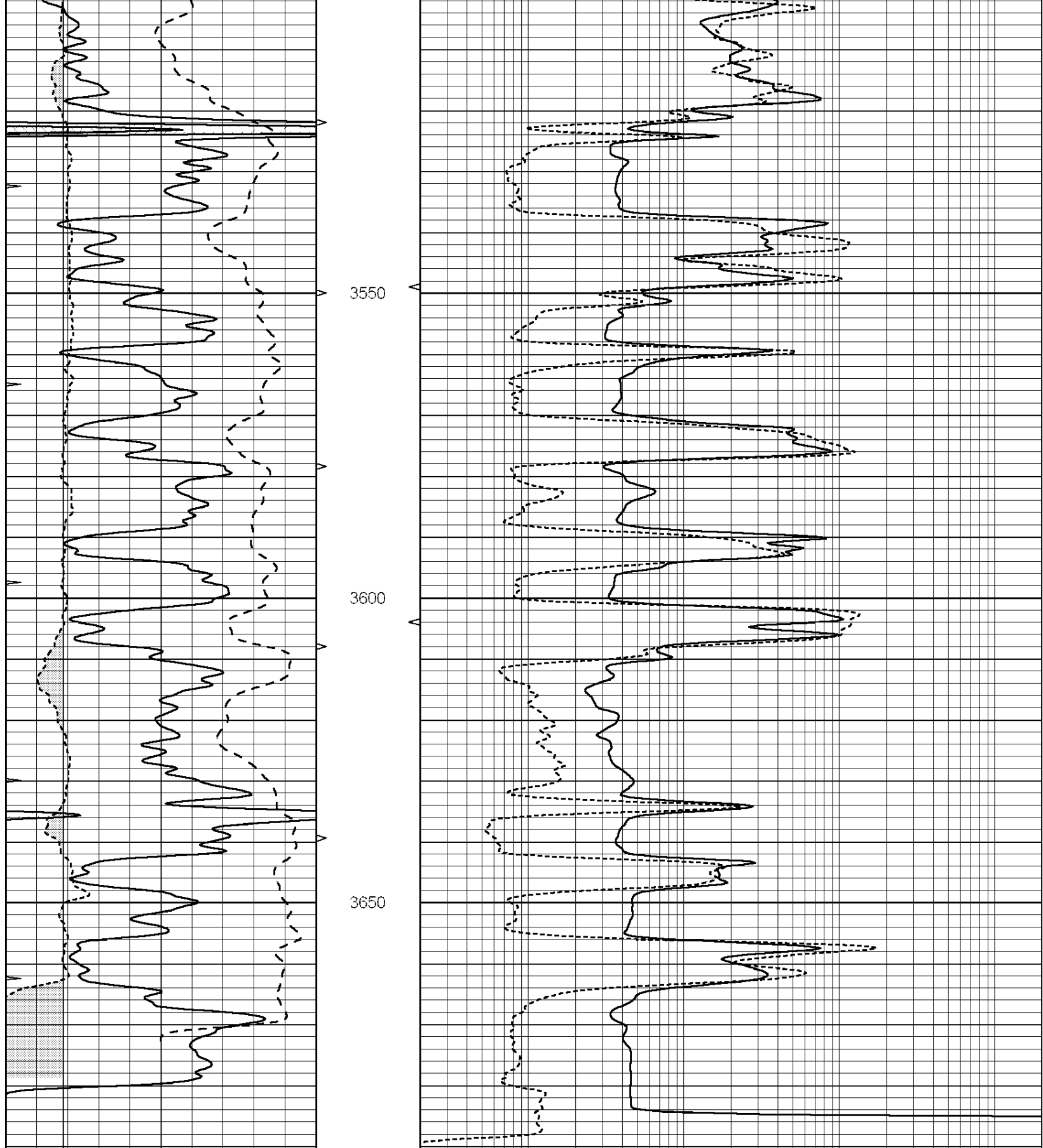
SUPERIOR  
Hays,  
Kansas

# REPEAT SECTION

Database File: 006922rag.db  
 Dataset Pathname: pass3  
 Presentation Format: rag  
 Dataset Creation: Thu May 19 23:25:17 2011 by Log Open-Cased 090629  
 Charted by: Depth in Feet scaled 1:240

0	GAMMA RAY (GAPI)	150	ABHV	0.2	GUARD (Ohm-m)	2000
-100	SP (mV)	100	10 (ft3) 0	0	NEUTRON (NAPI)	1000
6	CALIPER (in)	16	TBHV			
			0 (ft3) 10			





0	GAMMA RAY (GAPI)	150	ABHV	0.2	GUARD (Ohm-m)	2000
-100	SP (mV)	100	10 (ft3)	0	NEUTRON (NAPI)	1000
6	CALIPER (in)	16	TBHV			
			0 (ft3)	10		

Database File: 006922rag.db  
 Dataset Pathname: pass4.A  
 Dataset Creation: Fri May 20 00:43:49 2011

### Neutron Calibration Report

Serial Number: RAG1  
 Tool Model: RAG  
 Performed: Wed May 04 05:40:17 2011

Calibrator Values: 0 1 NAPI  
 Calibrator Readings: 0 1 cps

Sensitivity: 1.3 NAPI/cps

### Micro Spherically Focused Log Calibration Report

Serial-Model: RAG1-A  
 Performed: Thu May 19 23:20:51 2011

	Readings			References			Results	
	Low	High		Low	High		m	b
Conductivity	0.0110	0.9000	V	10.0000	1000.0000	mmho	1600.0000	-7.5000
Caliper	0.1837	0.3151	V	8.0000	16.0000	in	60.9046	-3.1888

### Gamma Ray Calibration Report

Serial Number: RAG1  
 Tool Model: RAG  
 Performed: Wed May 04 05:39:48 2011

Calibrator Value: 1.0 GAPI

Background Reading: 0.9 cps  
 Calibrator Reading: 1.0 cps

Sensitivity: 1.8000 GAPI/cps