

Ryan Seib

Petroleum Geologists

15-077-21724

15-077-21724

GEOLOGIST'S REPORT DRILLING TIME AND SAMPLE LOG

COMPANY Atlas Operating LLC
 LEASE Green #9
 FIELD Sharon North
 LOCATION 90 FSL 2400 FEL
30' FNL & 1980' FWL
 SEC 32 29 TWSP 31 RGE 9W
 COUNTY Harper STATE Kansas
 CONTRACTOR _____
 SPUD 12/3/11 COMP 12/11/10
 RTD 4600' LTD 4597'
 MUD UP 3400' TYPE MUD Chemical

ELEVATIONS

KB 1658
1610
 DF _____
1648
 GL 1600

Measurements Are All
From Kelly Bushing

CASING

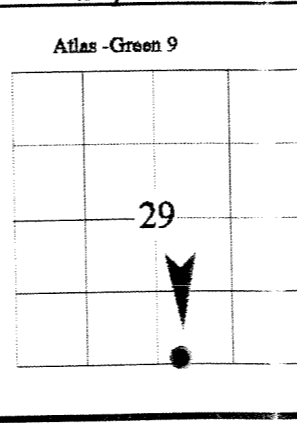
CONDUCTOR _____
 SURFACE 8-5/8" @ 266'
 PRODUCTION 4.5" @ 4590'

ELECTRICAL SURVEYS

CND DIL, _____
 MICRO _____
Superior

SAMPLES SAVED FROM 3700' TO RTD
 DRILLING TIME KEPT FROM 3700' TO RTD
 SAMPLES EXAMINED FROM 3700' TO RTD
 GEOLOGICAL SUPERVISION FROM 3800'
 REFERENCE WELL _____

Formation	Sample Tops	E-log Tops	Struct Pos.
Heebner Shale		3536 (-1926)	
Lansing	3710 (-2080)	3728 (-2118)	
Stark Sh.	4148 (-2518)	4174 (-2564)	
Cherokee Sh.	4360 (-2730)	4385 (-2775)	
Mississippi	4442 (-2832)	4438 (-2828)	
Mississippian Por.	4442 (-2832)	4446 (-2836)	

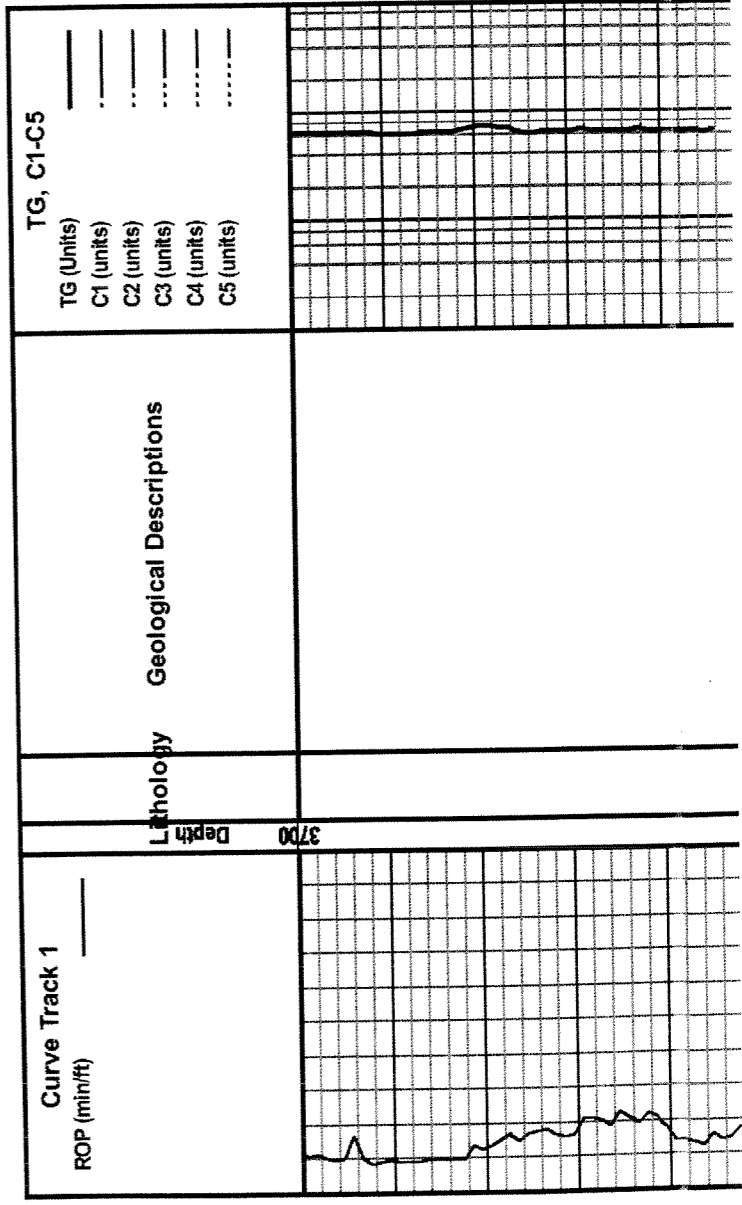


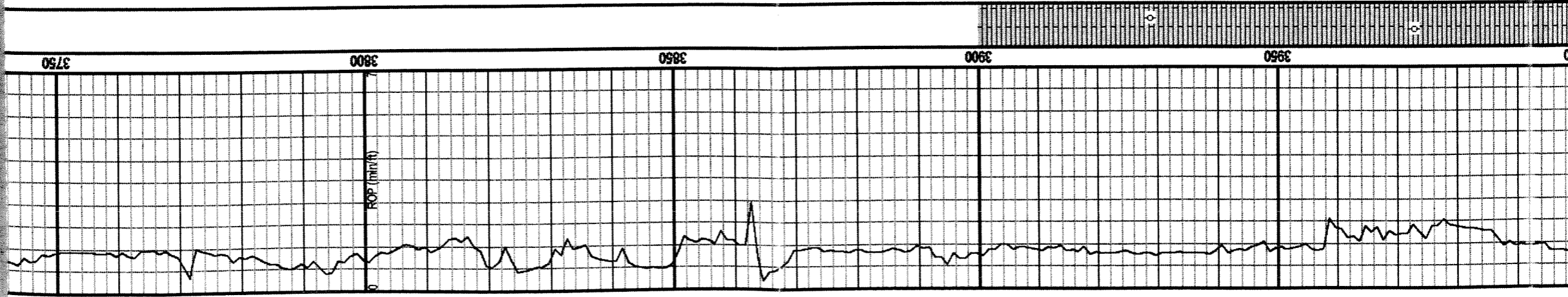
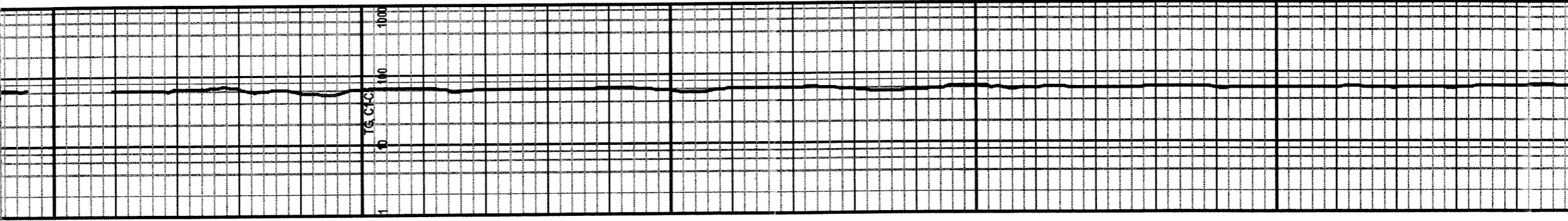
REMARKS The Green #9 will be further evaluated through casing based on sample and log analysis.

Respectfully Submitted,

Ryan Seib

15-077-21724





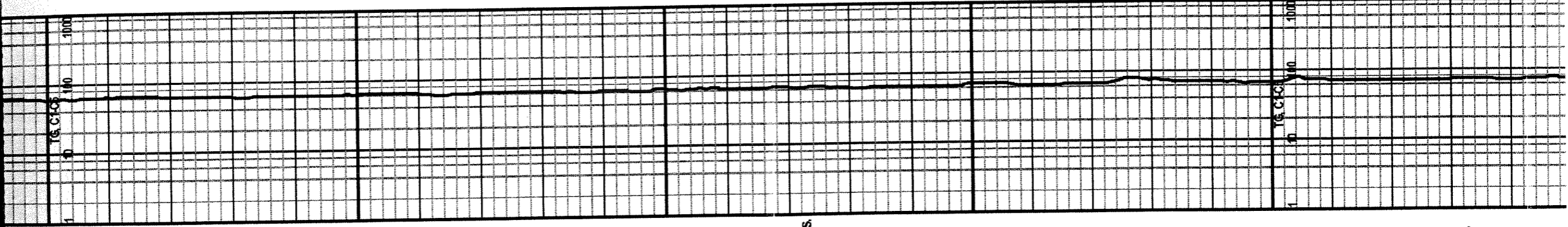
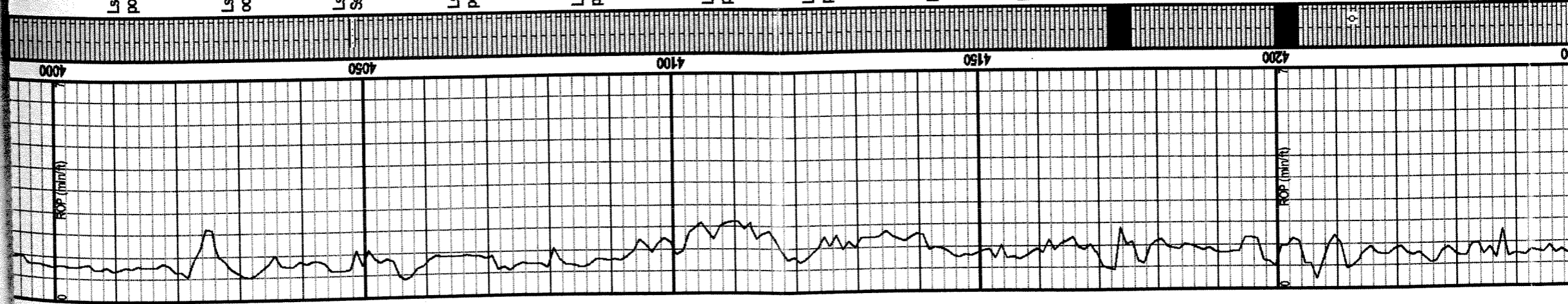
LS., tan-crm, fg-vfg, sing, firm, no vis. por.

LS., tan-wh, mott, firm, sli chalky, no vis. por., Occ. foss

LS., tan-crm-wh, sing/mott, firm, sli. chalky
N/S

LS., crm-wh, fg-vfg, firm, mott., Occ. tr. foss

LS., tan-wh, fg-vfg, firm, mott., Sh., vari col.



Ls., brn-tan-orm, fg-vfg, sing/mott., p. vis. por., n/s

Ls., tan-brn, vfg sing/mott, very chalky AA, occ Ss., s. rnd. w/ blk tr. min., Sh-gy-blk

Ls., crm-wh, fg-vfg, sing./mott., chalky, Occ. Ss., s. rnd., w/ blk min. str.

Ls., gy-orm; fg-vfg, mott/sing, chalky, p. vis por., tr. pyr., Sh-Blk

Ls., tan-orm-wh, fg-vfg, sing./mott., fp. ool. por., chalky

Ls., tan-orm, fg-vfg, sing/mott., firm., p. vis. por, n/s

Ls., gy-tan-orm, fg-vfg, sing., sil chalky, p. vis. por., n/s

Ls., AA

Ls., crm-wh, vfg, sing/mott., Sh., gy-blk

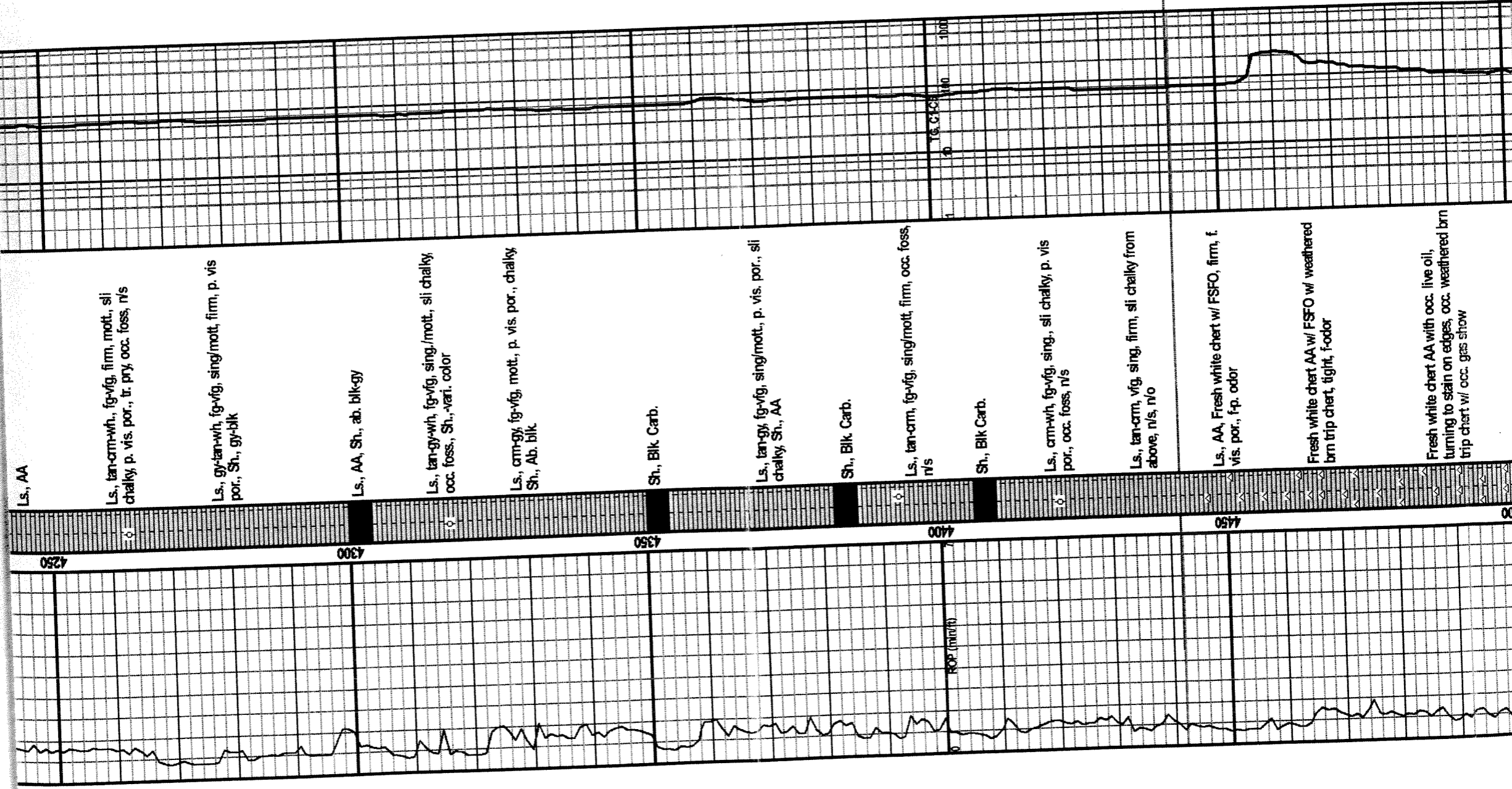
Sh., Blk Carb.

Sh., Blk Carb.

Ls., tan-orm, fg-vfg, chalky, occ. foss., n/s

Ls., crm-wh, vfg, sil chalky, p. vis por., occ. pyr., n/s

Ls., AA



Ls., AA

Ls., tan-orm-wh., fg-vfg, firm, mott., sli chalky, p. vis. por., tr. pry, occ. foss, n/s

Ls., gy-tan-wh, fg-vfg, sing/mott, firm, p. vis por., Sh., gy-blk

Ls., AA, Sh., ab. blk-gy

Ls., tan-gy-wh, fg-vfg, sing./mott., sli chalky, occ. foss, Sh., vari. color

Ls., orm-gy, fg-vfg, mott., p. vis. por., chalky Sh., Ab. blk

Sh., Blk Carb.

Ls., tan-gy, fg-vfg, sing/mott., p. vis. por., sli chalky, Sh., AA

Sh., Blk Carb.

Ls., tan-orm, fg-vfg, sing/mott, firm, occ. foss, n/s

Sh., Blk Carb.

Ls., orm-wh, fg-vfg, sing., sli chalky, p. vis por., occ. foss, n/s

Ls., tan-orm, vfg, sing, firm, sli chalky from above, n/s, n/o

Ls., AA, Fresh white chert w/ FSFO, firm, f. vis. por., fp. odor

Fresh white chert AA w/ FSFO w/ weathered brn trip chert, tight, f-odor

Fresh white chert AA with occ. live oil, turning to stain on edges, occ. weathered brn trip chert w/ occ. gas show

Mississippi

4442 (-2832

