



SUPERIOR
Hays,
Kansas

**COMPENSATED
DENSITY/NEUTRON
LOG**

Company MICA ENERGY, CORP.
Well SPRIGG #1
Field WILDCAT
County NORTON
State KANSAS

Company MICA ENERGY, CORPORATION
Well SPRIGG #1
Field WILDCAT
County NORTON State KANSAS

Location: API # : 15-137-20542-0000

1380' FNL & 1540' FEL

Other Services
DIL/MEL

SEC 7 TWP 1S RGE 23W

Permanent Datum GROUND LEVEL Elevation 2337
Log Measured From KELLY BUSHING 5' A.G.L.
Drilling Measured From KELLY BUSHING

Elevation
K.B. 2342
D.F. 2340
G.L. 2337

Date	1/1/11		
Run Number	TWO		
Depth Driller	3565		
Depth Logger	3564		
Bottom Logged Interval	3540		
Top Log Interval	3000		
Casing Driller	8 5/8" @ 220		
Casing Logger	218		
Bit Size	7 7/8		
Type Fluid in Hole	CHEMICAL MUD	CHLORIDES 2000 PPM	
Density / Viscosity	9.2/49		
pH / Fluid Loss	11.0/6.4		
Source of Sample	FLOWLINE		
Rin @ Meas. Temp	1 @ 54F		
Rmf @ Meas. Temp	.75 @ 54F		
Rmc @ Meas. Temp	1.20 @ 54F		
Source of Rmf / Rmc	MEASURED		
Rin @ BHT	.48 @ 112F		
Time Circulation Stopped	2 HOURS		
Time Logger on Bottom			
Maximum Recorded Temperature	112F		
Equipment Number	680		
Location	HAYS, KS.		
Recorded By	JASON CAPPELLUCCI		
Witnessed By	RICHARD BELL		

<<< Fold Here >>>

All interpretations are opinions based on inferences from electrical or other measurements and we cannot and do not guarantee the accuracy or correctness of any interpretation, and we shall not, except in the case of gross or willful negligence on our part, be liable or responsible for any loss, costs, damages, or expenses incurred or sustained by anyone resulting from any interpretation made by any of our officers, agents or employees. These interpretations are also subject to our general terms and conditions set out in our current Price Schedule.

Comments

THANK YOU FOR USING SUPERIOR WELL SERVICE (785) 628-6395
DIRECTIONS
NORTON, KS. - 10 N. TO RD B. - 3 1/4 W. - S. INTO

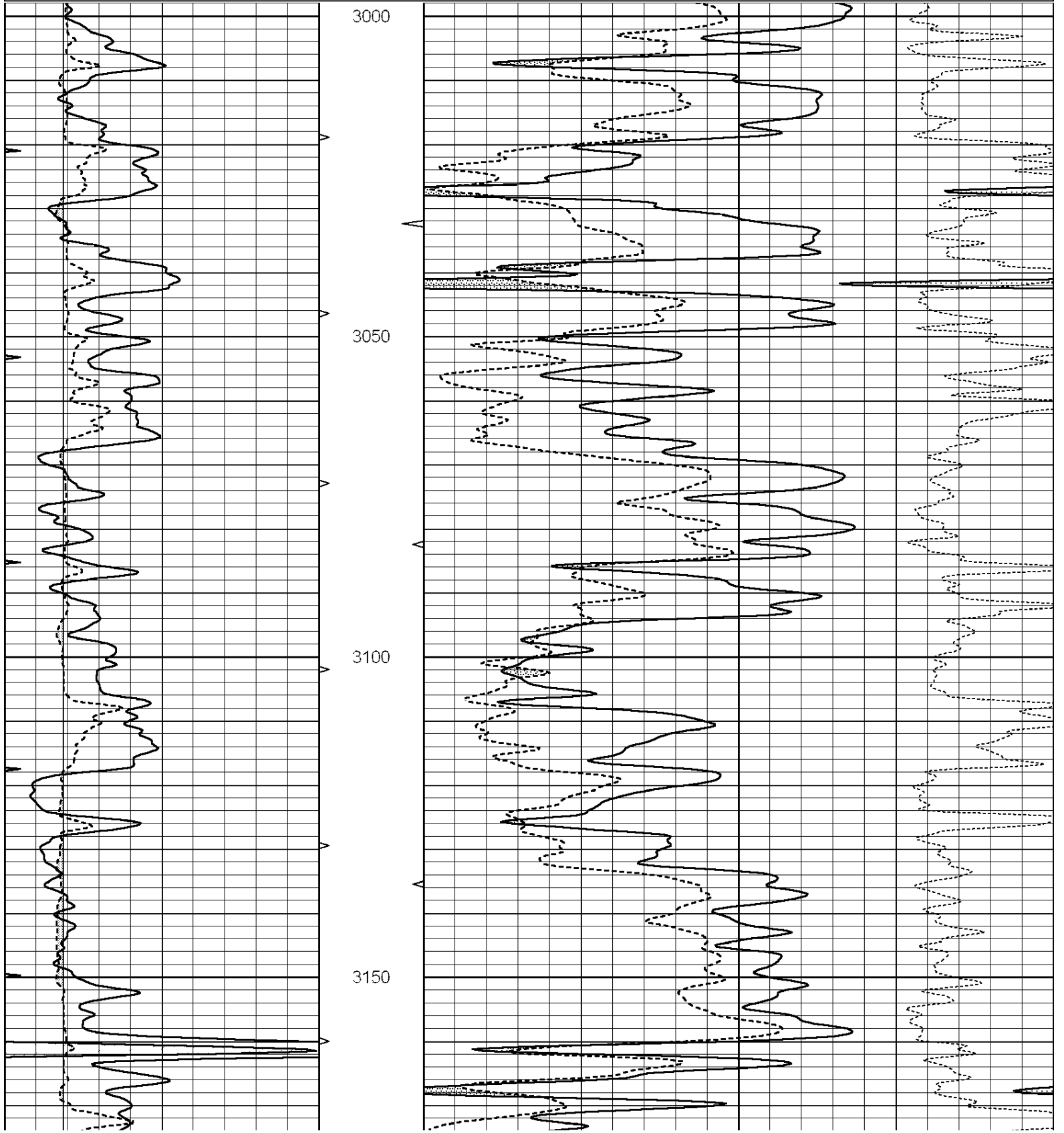


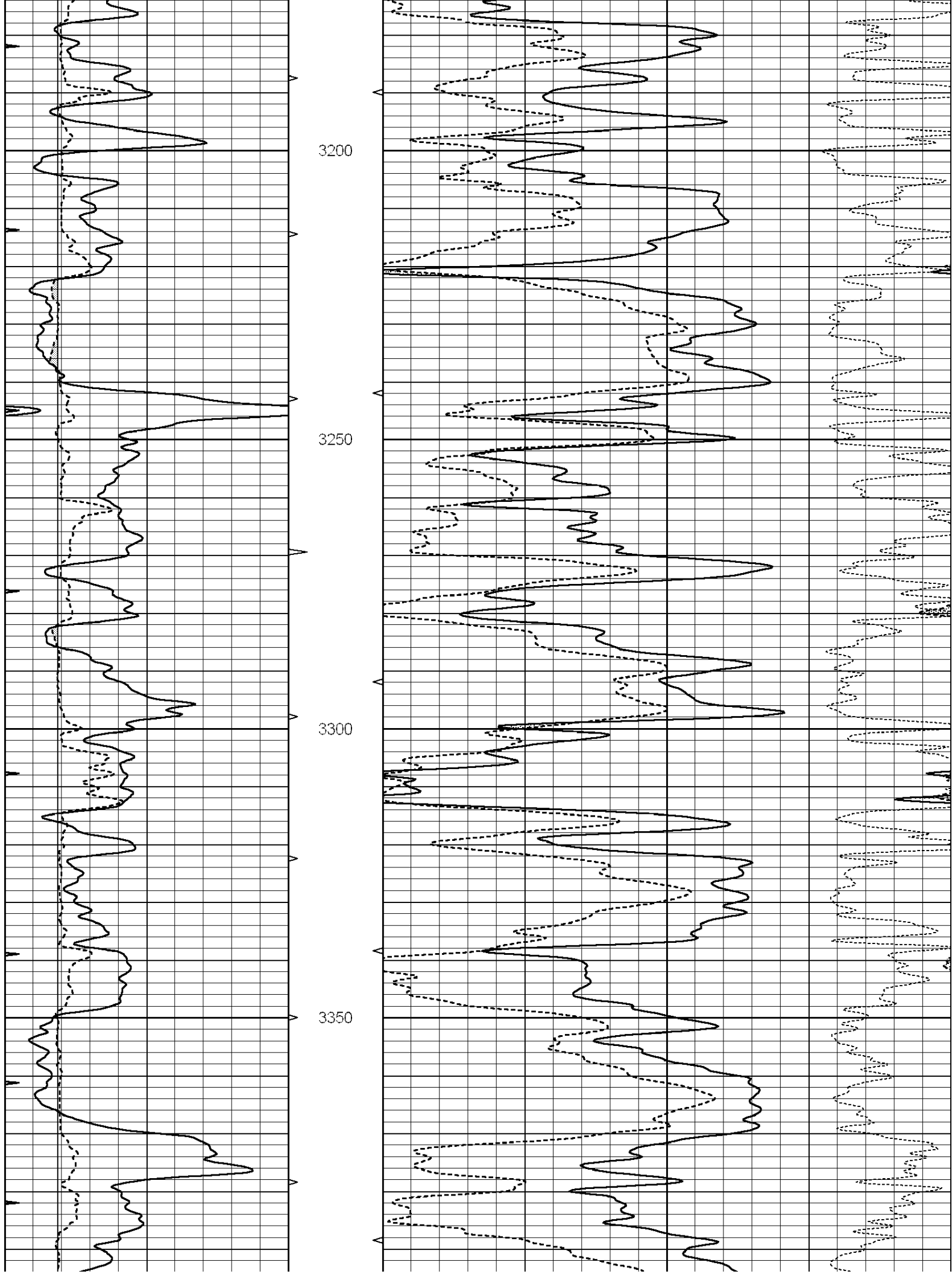
SUPERIOR
Hays,
Kansas

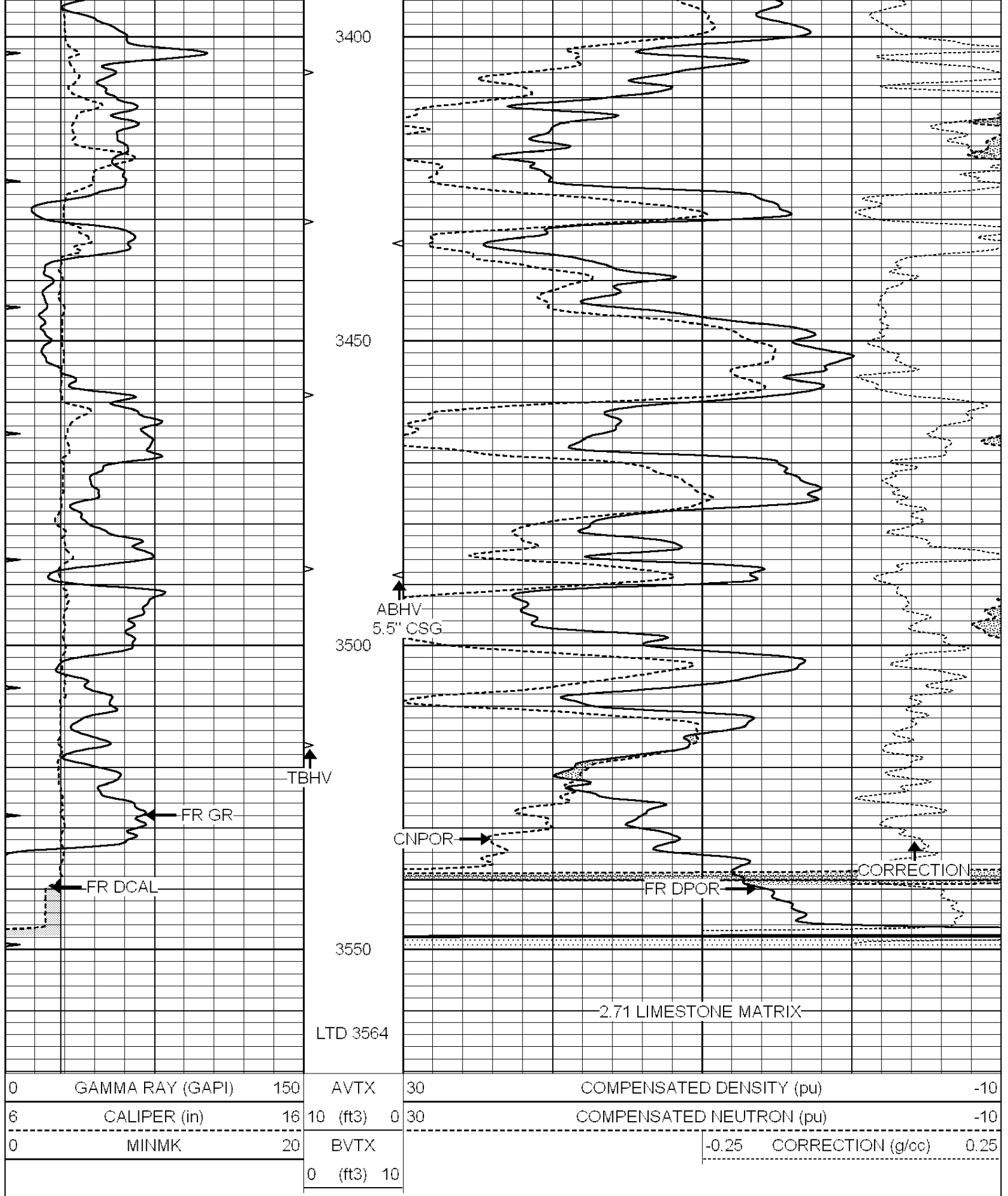
MAIN SECTION

Database File: 006438ddn.db
 Dataset Pathname: pass6.1
 Presentation Format: _den_neu
 Dataset Creation: Sat Jan 01 22:22:39 2011 by Calc Open-Cased 090629
 Charted by: Depth in Feet scaled 1:240

0	GAMMA RAY (GAPI)	150	AVTX	30	COMPENSATED DENSITY (pu)	-10
6	CALIPER (in)	16	10 (ft3)	0 30	COMPENSATED NEUTRON (pu)	-10
0	MINMK	20	BVTX		-0.25 CORRECTION (g/cc)	0.25
			0 (ft3)	10		





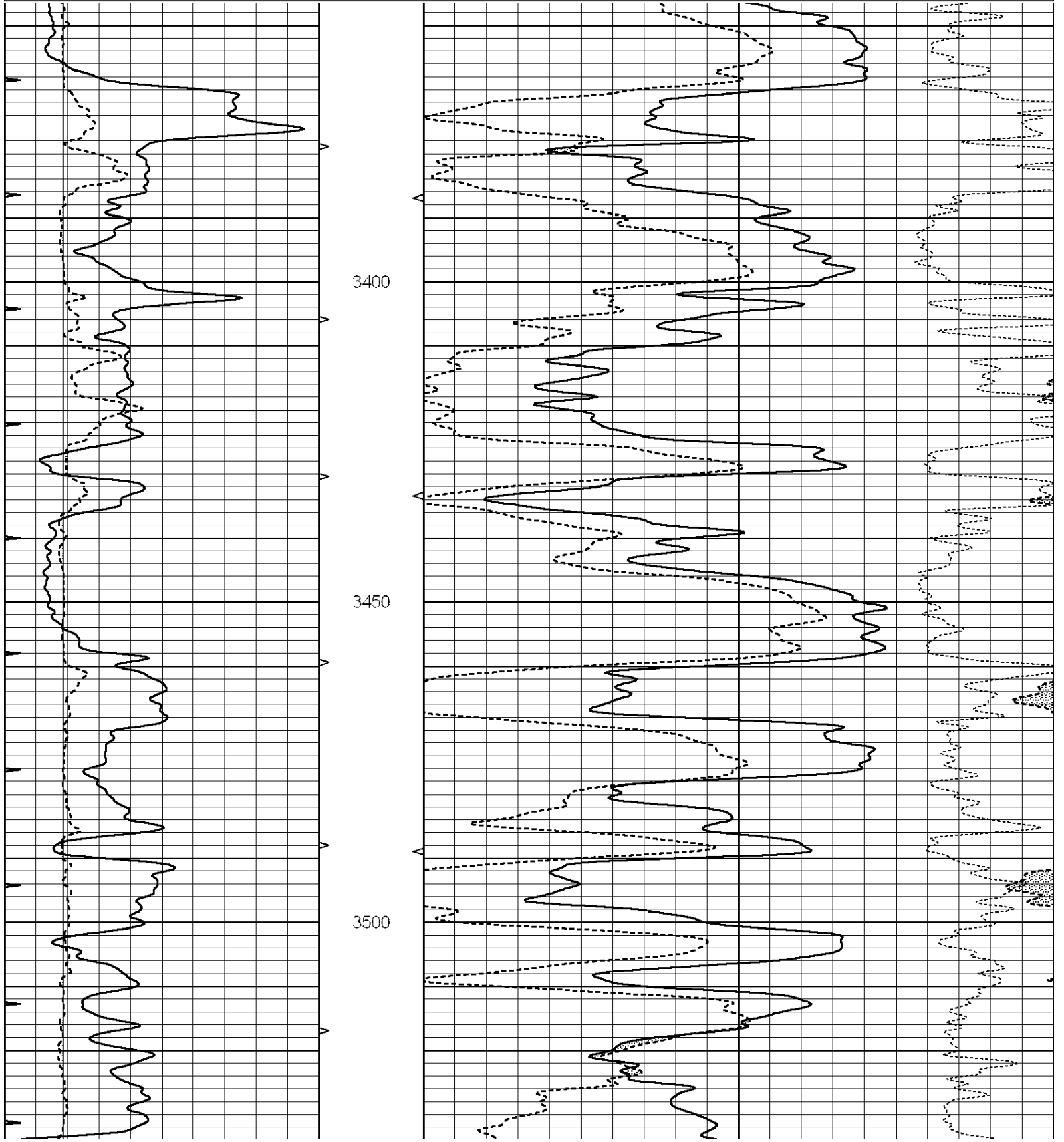


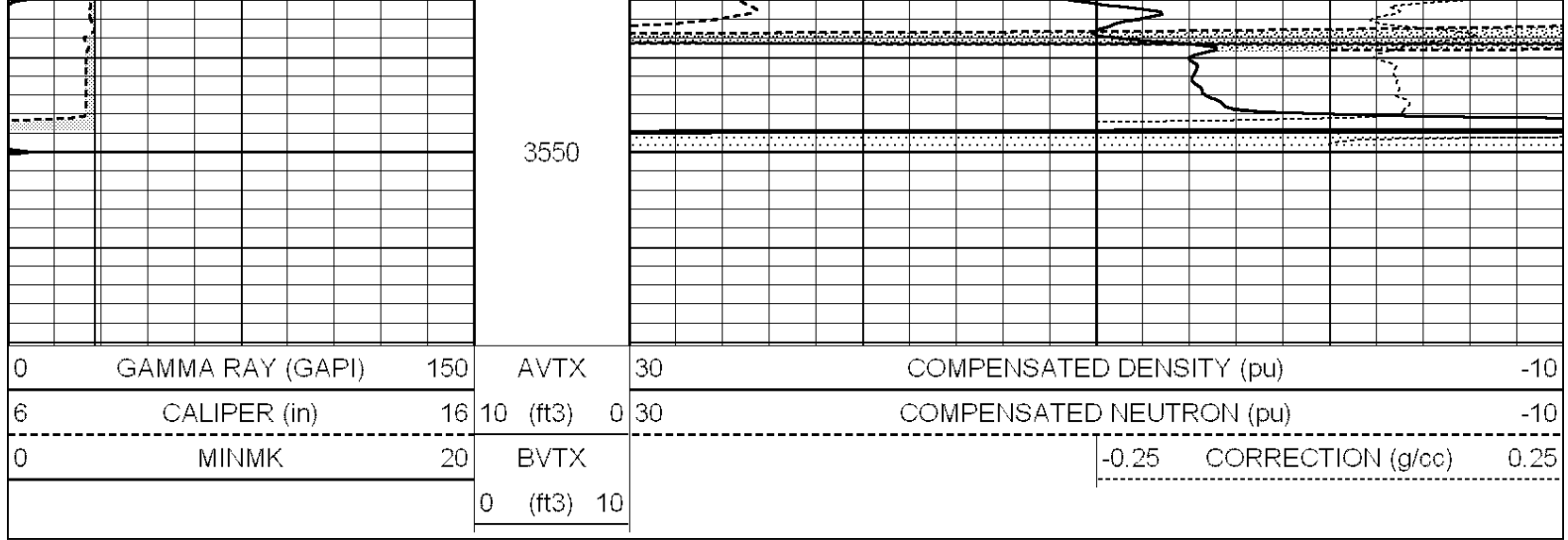
SUPERIOR
Hays,
Kansas

REPEAT SECTION

Database File: 006438ddn.db
 Dataset Pathname: pass5.1
 Presentation Format: _den_neu
 Dataset Creation: Sat Jan 01 22:18:19 2011 by Calc Open-Cased 090629
 Charted by: Depth in Feet scaled 1:240

0	GAMMA RAY (GAPI)	150	AVTX	30	COMPENSATED DENSITY (pu)	-10
6	CALIPER (in)	16	10 (ft3)	0 30	COMPENSATED NEUTRON (pu)	-10
0	MINMK	20	BVTX		-0.25 CORRECTION (g/cc)	0.25
			0 (ft3)	10		





Calibration Report

Database File: 006438ddn.db
 Dataset Pathname: pass5.1
 Dataset Creation: Sat Jan 01 22:18:19 2011 by Calc Open-Cased 090629

Dual Induction Calibration Report

Serial-Model: PROBE7-DILG
 Surface Cal Performed: Wed Jul 30 06:14:24 2008
 Downhole Cal Performed: Mon Jul 28 12:02:56 2008
 After Survey Verification Performed: Mon Jul 28 12:02:56 2008

Surface Calibration

Loop:	Readings			References			Results	
	Air	Loop		Air	Loop		m	b
Deep	-0.014	0.629	V	0.000	400.000	mmho/m	621.923	8.759
Medium	0.039	0.728	V	0.000	464.000	mmho/m	673.322	-26.058
Internal:	Zero	Cal		Zero	Cal		m	b
Deep	0.011	0.610	V	0.000	400.000	mmho/m	667.135	-7.256
Medium	0.005	0.712	V	0.000	464.000	mmho/m	655.677	-3.102

Downhole Calibration

	Readings			References			Results	
	Zero	Cal		Zero	Cal		m'	b'
Deep	0.000	0.000	mmho/m	14.508	388.384	mmho/m	1.000	0.000
Medium	0.000	0.000	mmho/m	166.367	504.400	mmho/m	1.000	0.000
LL3		7.500	V		1400.000	Ohm-m		
		0.000	V		20.000	Ohm-m		
		-7.200	V		4000.000	mmho-m		

After Survey Verification

	Readings			Targets			Results	
	Zero	Cal		Zero	Cal		m'	b'
Deep	0.000	0.000	mmho/m	0.000	0.000	mmho/m	0.000	0.000
Medium	0.000	0.000	mmho/m	0.000	0.000	mmho/m	0.000	0.000
LL3		1.000	Ohm-m		1.000	Ohm-m		
		0.000	Ohm-m		0.000	Ohm-m		
		1.000	mmho-m		1.000	mmho-m		

Compensated Density Calibration Report

Serial-Model: GEAD1GEADUART

Serial-Model:
Source / Verifier:
Master Calibration Performed:

GEAR4-GEARHART
143 / 143
Tue May 11 10:59:10 2010

Master Calibration

	Density		Far Detector	Near Detector	
Magnesium	1.710	g/cc	1015.91	497.51	cps
Aluminum	2.600	g/cc	227.67	350.20	cps
Spine Angle = 76.79			Density/Spine Ratio = 0.579		
	Size		Reading		
Small Ring	8.00	in	2.50	V	
Large Ring	14.00	in	4.70	V	

Compensated Neutron Calibration Report

Serial Number: 5I
Tool Model: G

CALIBRATION

Detector	Readings		Target		Normalization
Short Space	1.00	cps	1.00	cps	1.0000
Long Space	1.00	cps	1.00	cps	1.0000

Gamma Ray Calibration Report

Serial Number: GR6
Tool Model: OPEN
Performed: Wed Jul 14 14:14:30 2010

Calibrator Value: 150.0 GAPI

Background Reading: 0.0 cps
Calibrator Reading: 276.0 cps

Sensitivity: 0.6235 GAPI/cps