



**SUPERIOR**  
Hays,  
Kansas

**MICRO**  
LOG

Company MICA ENERGY, CORP.  
Well SPRIGG #1  
Field WILDCAT  
County NORTON  
State KANSAS

Company MICA ENERGY, CORPORATION  
Well SPRIGG #1  
Field WILDCAT  
County NORTON State KANSAS

Location: API # : 15-137-20542-0000  
1380' FNL & 1540' FEL  
SEC 7 TWP 1S RGE 23W  
Permanent Datum GROUND LEVEL Elevation 2337  
Log Measured From KELLY BUSHING 5' A.G.L.  
Drilling Measured From KELLY BUSHING  
Other Services CDL/CNL DIL  
Elevation K.B. 2342 D.F. 2340 G.L. 2337

Date	1/1/11		
Run Number	ONE		
Depth Driller	3565		
Depth Logger	3564		
Bottom Logged Interval	3562		
Top Log Interval	3000		
Casing Driller	8 5/8" @ 220		
Casing Logger	NA		
Bit Size	7 7/8		
Type Fluid in Hole	CHEMICAL MUD	CHLORIDES 2000 PPM	
Density / Viscosity	9.2/49		
pH / Fluid Loss	11.0/6.4		
Source of Sample	FLOWLINE		
Rin @ Meas. Temp	1 @ 54F		
Rmf @ Meas. Temp	.75 @ 54F		
Rmc @ Meas. Temp	1.20 @ 54F		
Source of Rmf / Rmc	MEASURED		
Rin @ BHT	.48 @ 112F		
Time Circulation Stopped	2 HOURS		
Time Logger on Bottom			
Maximum Recorded Temperature	112F		
Equipment Number	680		
Location	HAYS, KS.		
Recorded By	JASON CAPPELLUCCI		
Witnessed By	RICHARD BELL		

<<< Fold Here >>>

All interpretations are opinions based on inferences from electrical or other measurements and we cannot and do not guarantee the accuracy or correctness of any interpretation, and we shall not, except in the case of gross or willful negligence on our part, be liable or responsible for any loss, costs, damages, or expenses incurred or sustained by anyone resulting from any interpretation made by any of our officers, agents or employees. These interpretations are also subject to our general terms and conditions set out in our current Price Schedule.

**Comments**

THANK YOU FOR USING SUPERIOR WELL SERVICE (785) 628-6395  
DIRECTIONS  
NORTON, KS. - 10 N. TO RD B. - 3 1/4 W. - S. INTO

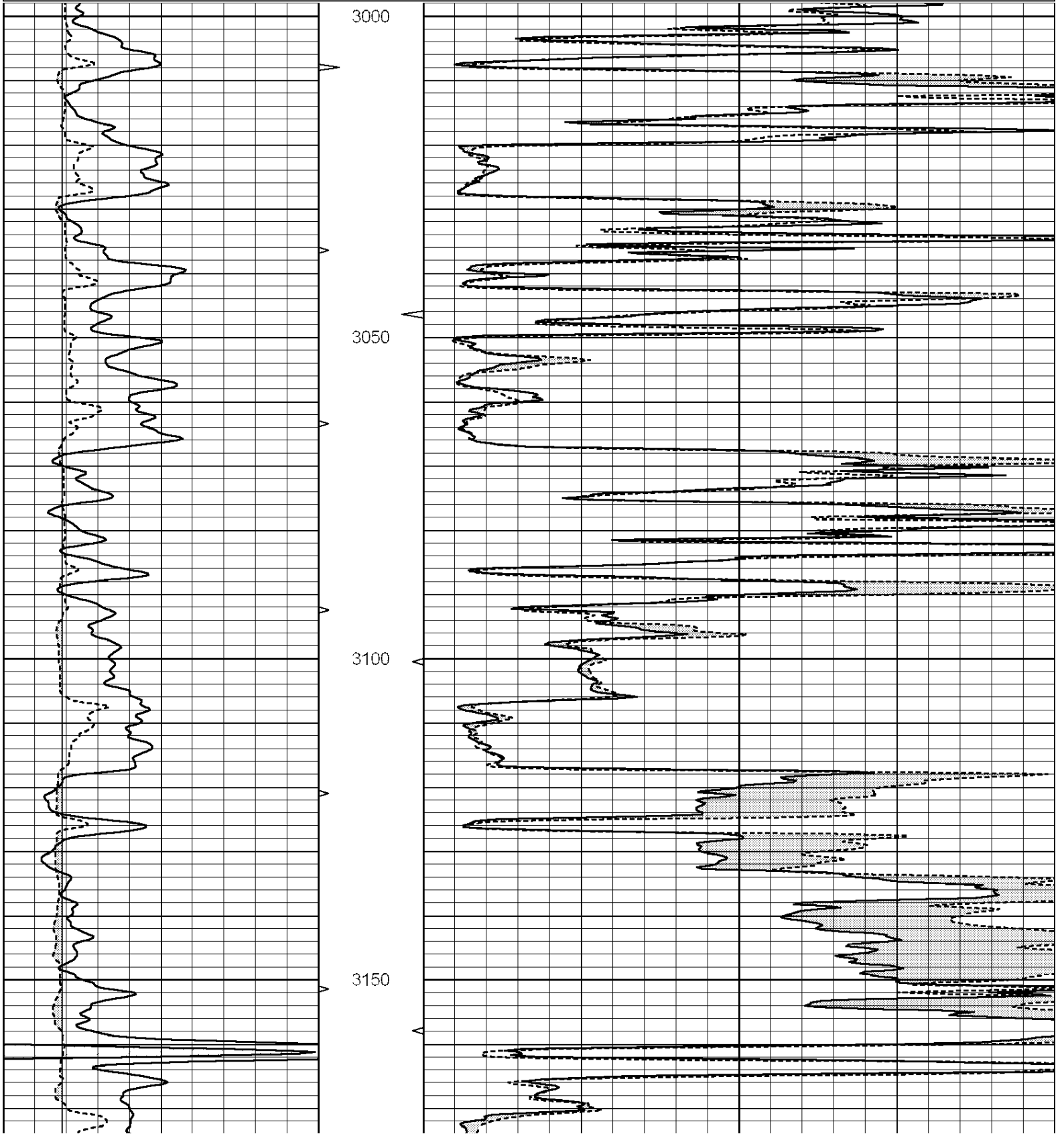


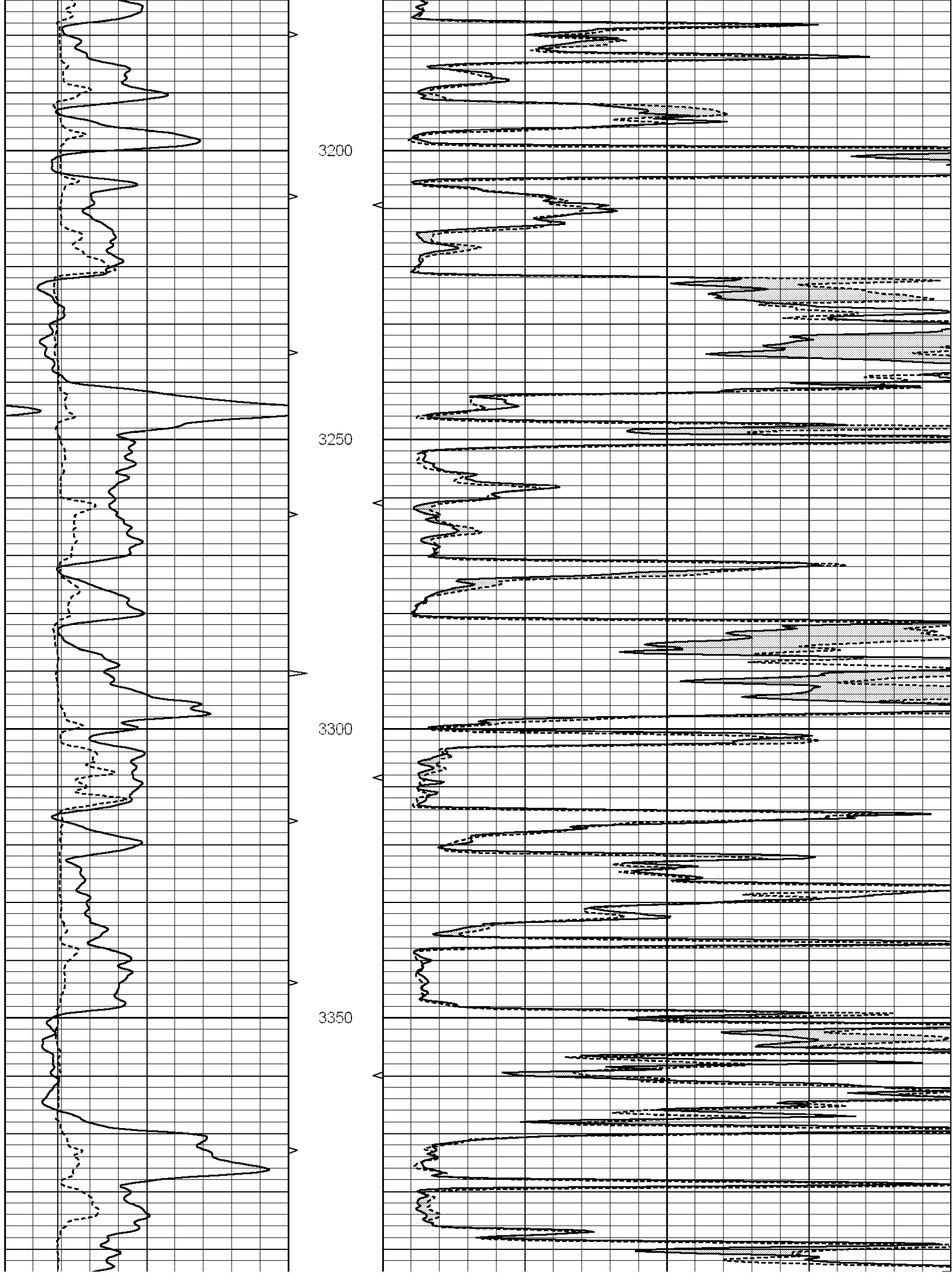
**SUPERIOR**  
Hays,  
Kansas

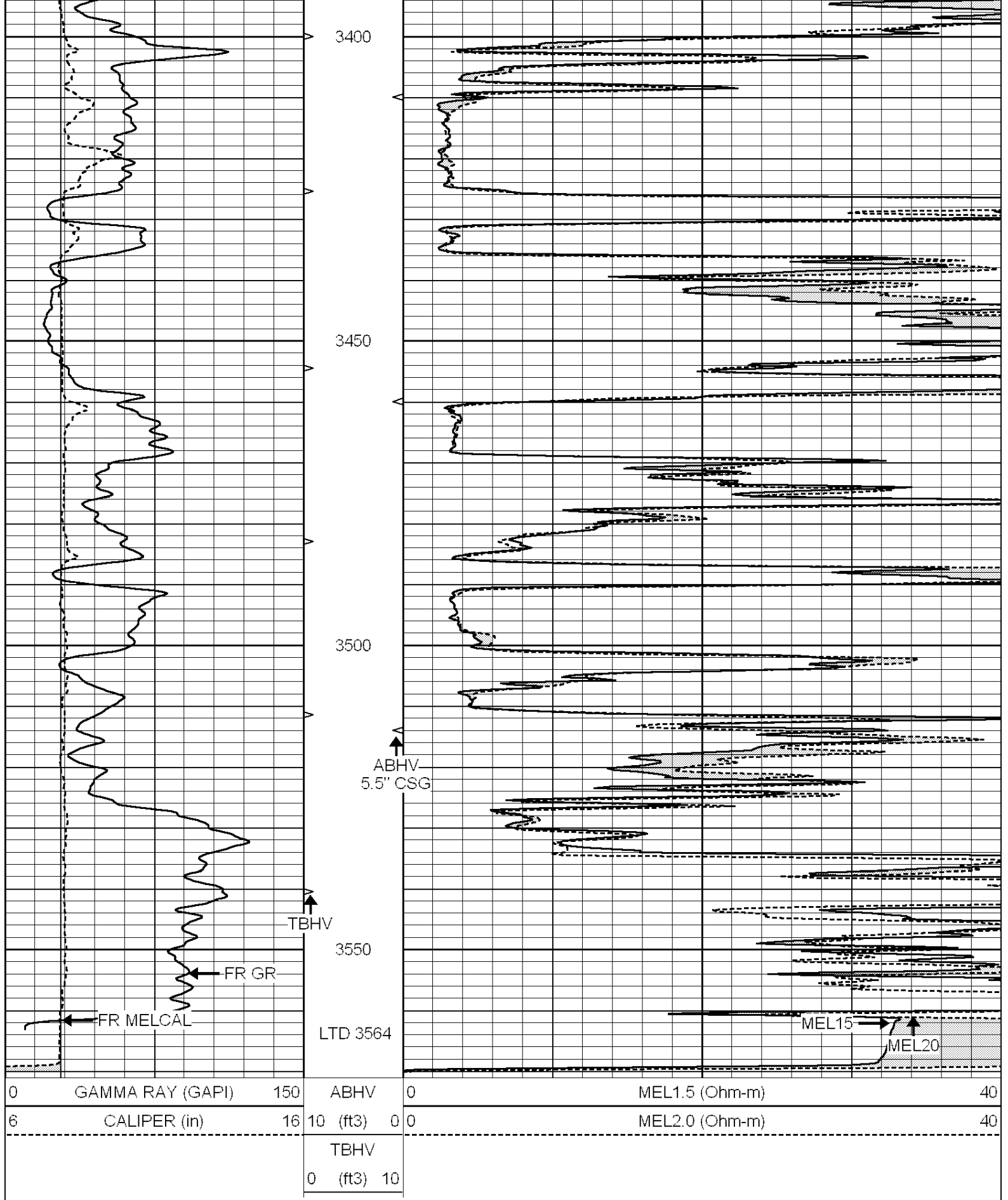
**MAIN SECTION**

Database File: 006438ddn.db  
 Dataset Pathname: pass3.1  
 Presentation Format: \_micro  
 Dataset Creation: Sat Jan 01 20:42:37 2011 by Calc Open-Cased 090629  
 Charted by: Depth in Feet scaled 1:240

0	GAMMA RAY (GAPI)	150	ABHV	0	MEL1.5 (Ohm-m)	40
6	CALIPER (in)	16	10 (ft3)	0	MEL2.0 (Ohm-m)	40
			TBHV			
			0 (ft3)	10		





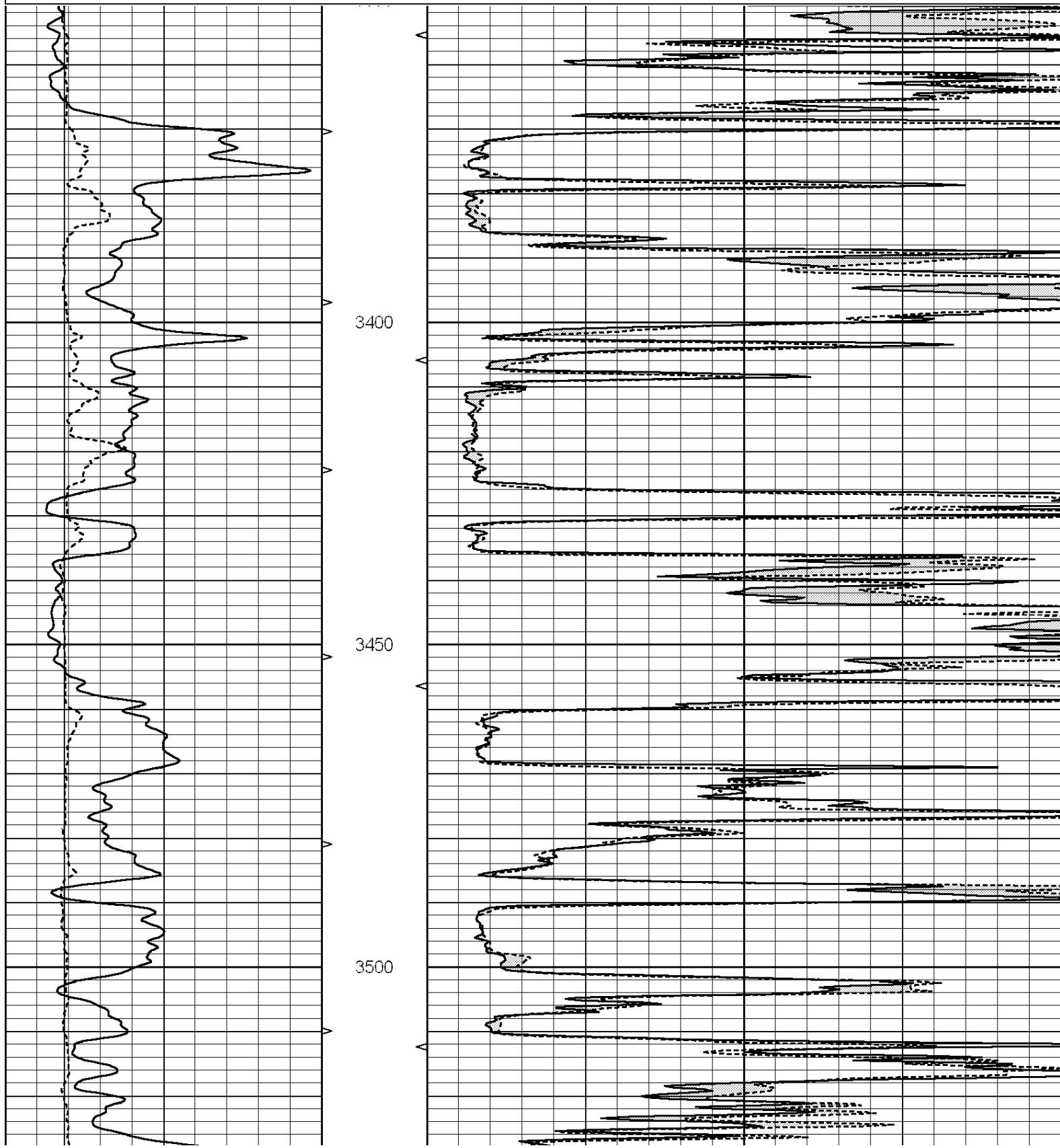


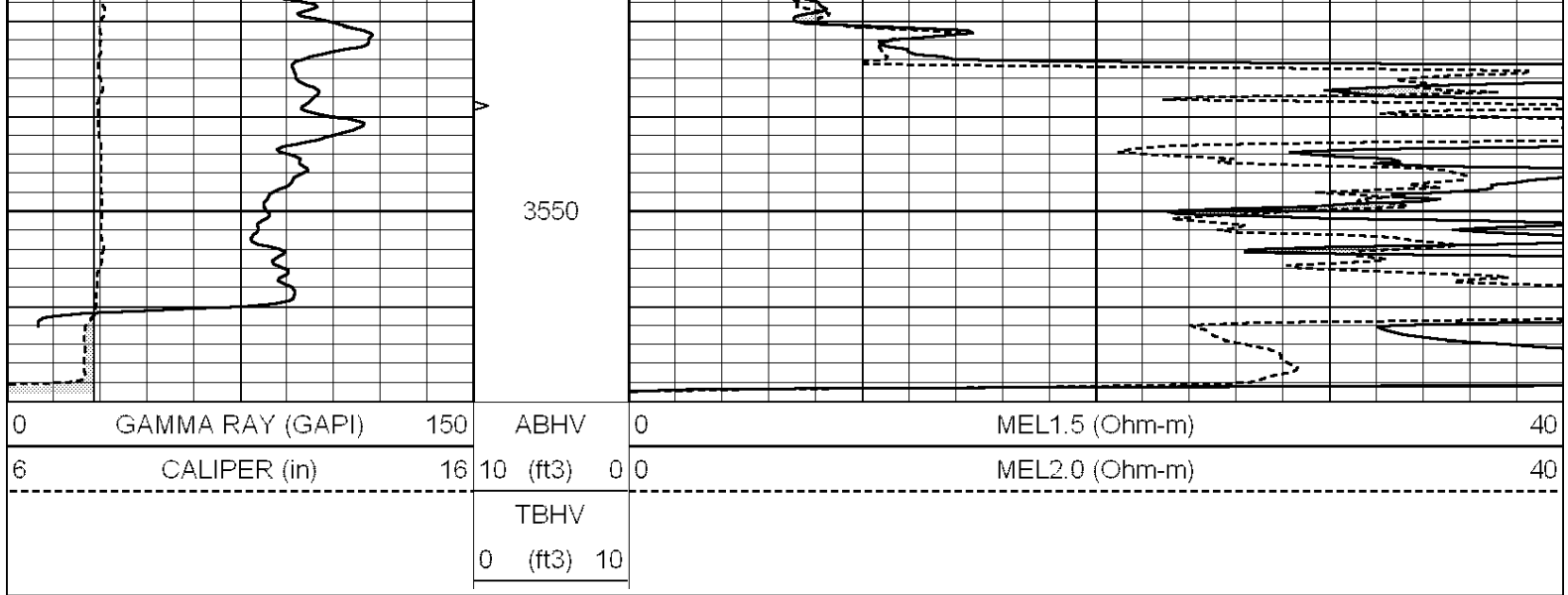
SUPERIOR  
Hays,  
Kansas

# REPEAT SECTION

Database File: 006438ddn.db  
 Dataset Pathname: pass2.1  
 Presentation Format: \_micro  
 Dataset Creation: Sat Jan 01 20:43:21 2011 by Calc Open-Cased 090629  
 Charted by: Depth in Feet scaled 1:240

0	GAMMA RAY (GAPI)	150	ABHV	0	MEL1.5 (Ohm-m)	40
6	CALIPER (in)	16	10 (ft3)	0	MEL2.0 (Ohm-m)	40
			TBHV			
			0 (ft3)	10		





### Calibration Report

Database File: 006438ddn.db  
 Dataset Pathname: pass2.1  
 Dataset Creation: Sat Jan 01 20:43:21 2011 by Calc Open-Cased 090629

### MICRO Calibration Report

Serial Number:	MICRO6	
Tool Model:	PROBE	
Performed:	Thu Oct 07 12:34:51 2010	
Caliper Calibration:	Gain=5.039	Offset=1.609
References	Low Cal	High Cal
Readings	8.000	14.000
	1.401	2.546
1.5" Calibration:	Gain=40.781	Offset=-0.851
References	Low Cal	High Cal
Readings	0.000	20.000
	0.008	1.200
2" Calibration:	Gain=75.739	Offset=-2.193
References	Low Cal	High Cal
Readings	0.000	20.000
	0.008	0.888

### Gamma Ray Calibration Report

Serial Number:	GR6	
Tool Model:	OPEN	
Performed:	Wed Jul 14 14:14:30 2010	
Calibrator Value:	150.0	GAPI
Background Reading:	0.0	cps
Calibrator Reading:	276.0	cps
Sensitivity:	0.5835	GAPI/cps