



SUPERIOR
Hays,
Kansas

**DUAL
INDUCTION
LOG**

Company CASTELLI EXPLORATION, INC.
Well GREGG #7-19
Field SHIMER
County COMANCHE
State KANSAS

Company CASTELLI EXPLORATION, INC.
Well GREGG #7-19
Field SHIMER
County COMANCHE State KANSAS

Location: API # : 15-033-21578-0000
2310' FNL & 660' FEL
N2 - NE - NE
SEC 19 TWP 33S RGE 16W
Permanent Datum GROUND LEVEL Elevation 1825
Log Measured From KELLY BUSHING 13' A.G.L.
Drilling Measured From KELLY BUSHING
Other Services
CDL/CNL
MEL
Elevation
K.B. 1838
D.F. 1836
G.L. 1825

Date	1/22/10
Run Number	ONE
Depth Driller	5200
Depth Logger	5203
Bottom Logged Interval	5201
Top Log Interval	00
Casing Driller	13 3/8" @ 345
Casing Logger	342
Bit Size	7 7/8
Type Fluid in Hole	CHEMICAL MUD
Density / Viscosity	9.2/53
pH / Fluid Loss	10.5/8.8
Source of Sample	FLOWLINE
Rim @ Meas. Temp	1.0 @ 65F
Rmf @ Meas. Temp	.75 @ 65F
Rmc @ Meas. Temp	1.20 @ 65F
Source of Rmf / Rmc	MEASURED
Rim @ BHT	.51 @ 126F
Time Circulation Stopped	2 HOURS
Time Logger on Bottom	
Maximum Recorded Temperature	126F
Equipment Number	680
Location	HAYS, KS.
Recorded By	JASON CAPPELLUCCI
Witnessed By	RICK POPP

<<< Fold Here >>>

All interpretations are opinions based on inferences from electrical or other measurements and we cannot and do not guarantee the accuracy or correctness of any interpretation, and we shall not, except in the case of gross or willful negligence on our part, be liable or responsible for any loss, costs, damages, or expenses incurred or sustained by anyone resulting from any interpretation made by any of our officers, agents or employees. These interpretations are also subject to our general terms and conditions set out in our current Price Schedule.

Comments

THANK YOU FOR USING SUPERIOR WELL SERVICE (785) 628-6395
DIRECTIONS
COLDWATER, KS. - 9 E. TO MM 193 - 4 S. TO STOP SIGN - 2 E. TO CURVE
3 S. PAST 3 CATTLE GUARDS - ON WEST SIDE OF METAL BUILDING,
GO 2 MILES SOUTH INTO PAST 3 LOCATIONS



SUPERIOR
Hays,
Kansas

MAIN SECTION

Database File: 006451ddn.db
 Dataset Pathname: pass3.2
 Presentation Format: _dil2
 Dataset Creation: Sat Jan 22 19:45:15 2011 by Calc Open-Cased 090629
 Charted by: Depth in Feet scaled 1:600

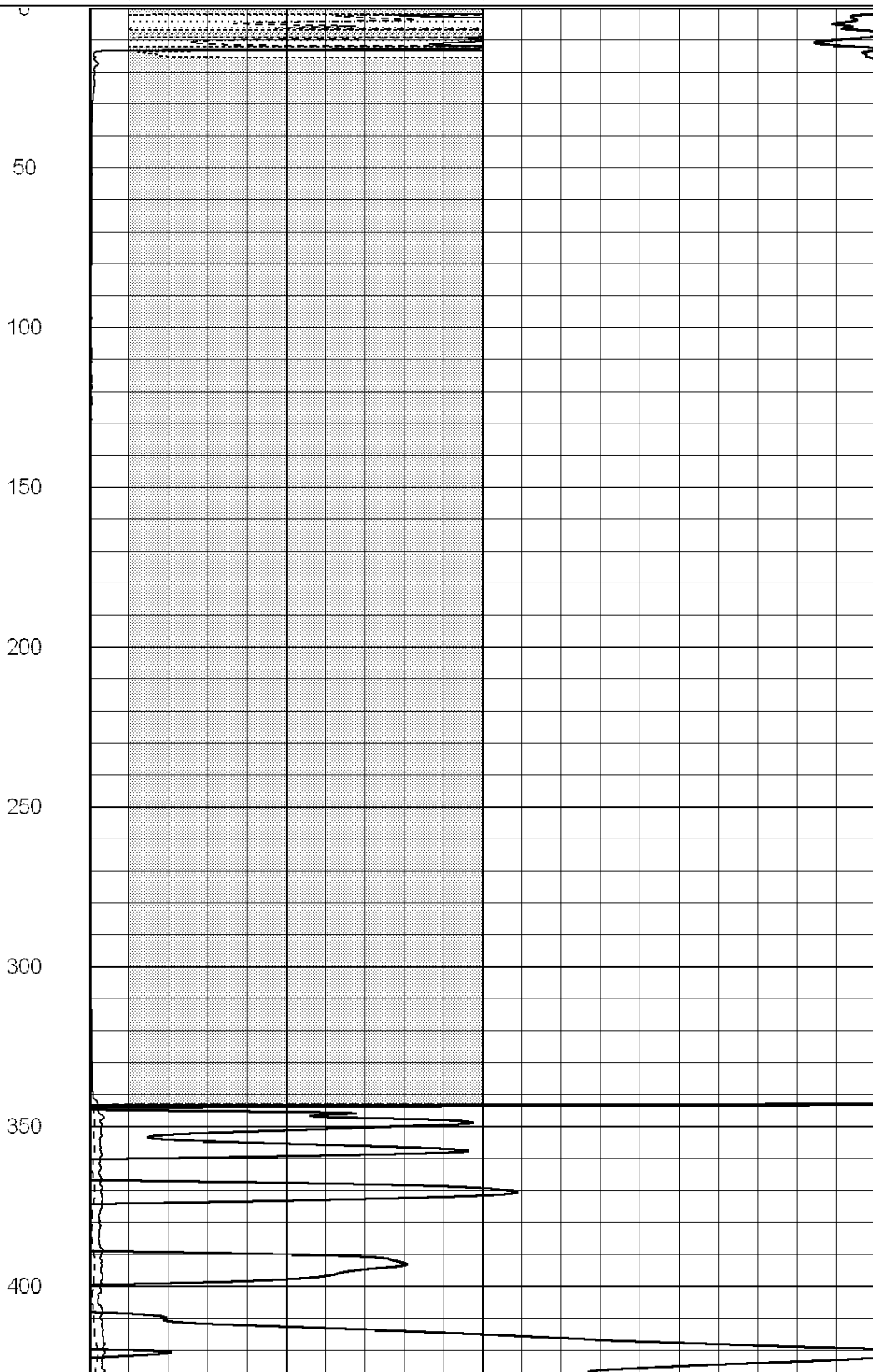
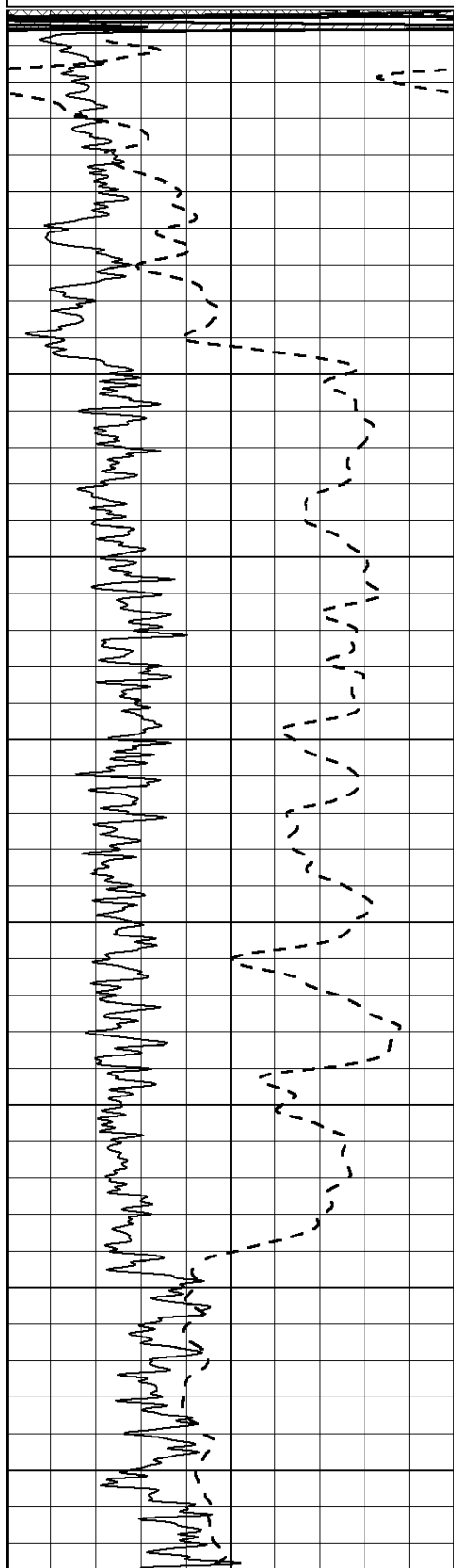
0	Gamma Ray (GAPI)	150
-100	SP (mV)	100

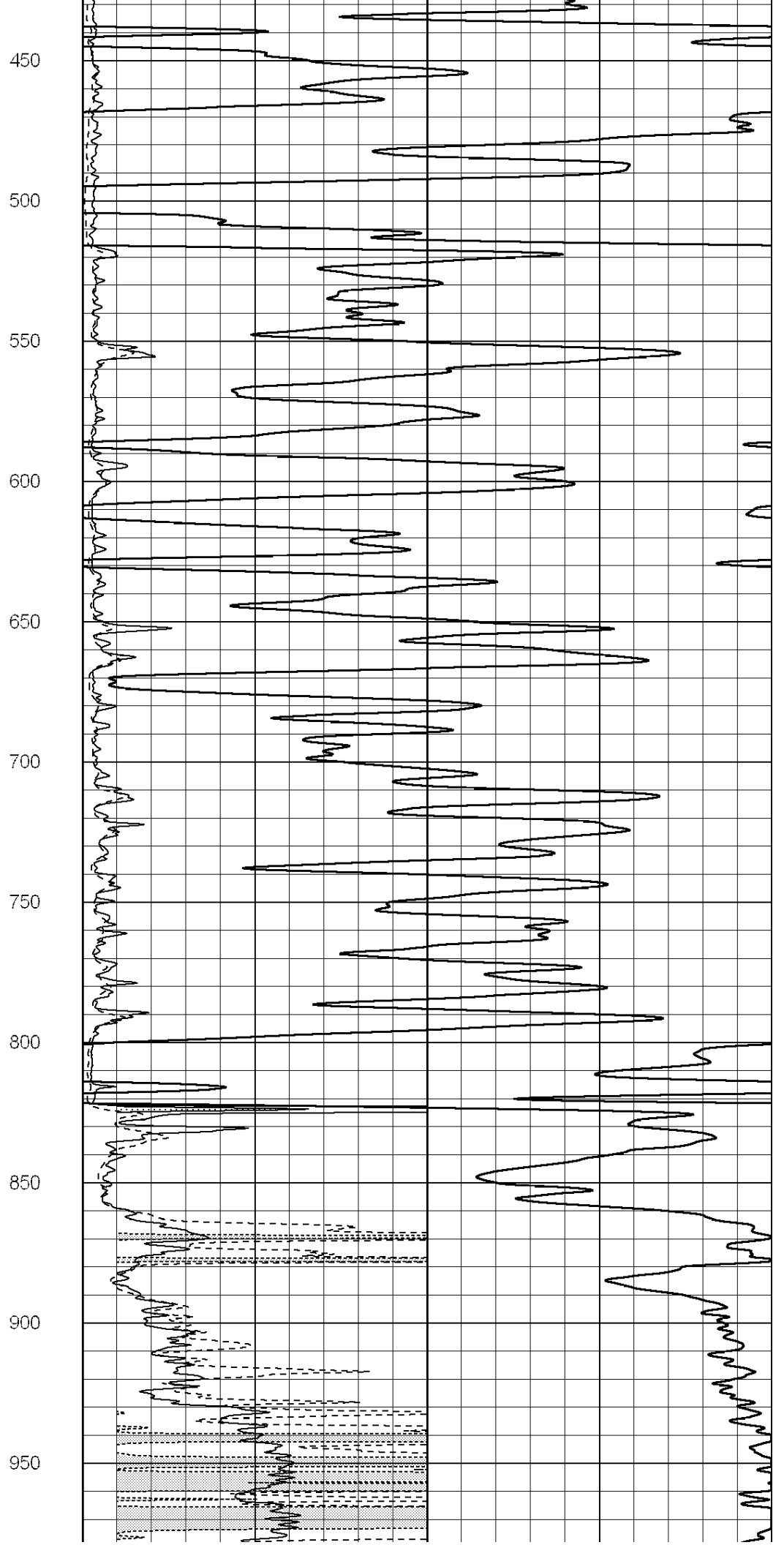
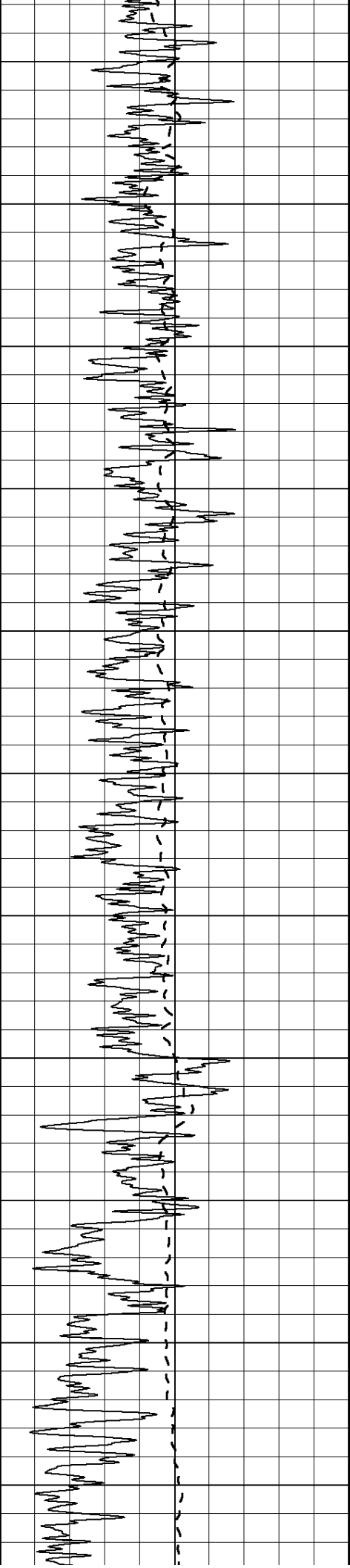
0	RLL3 (Ohm-m)	50
0	Deep Induction (Ohm-m)	50

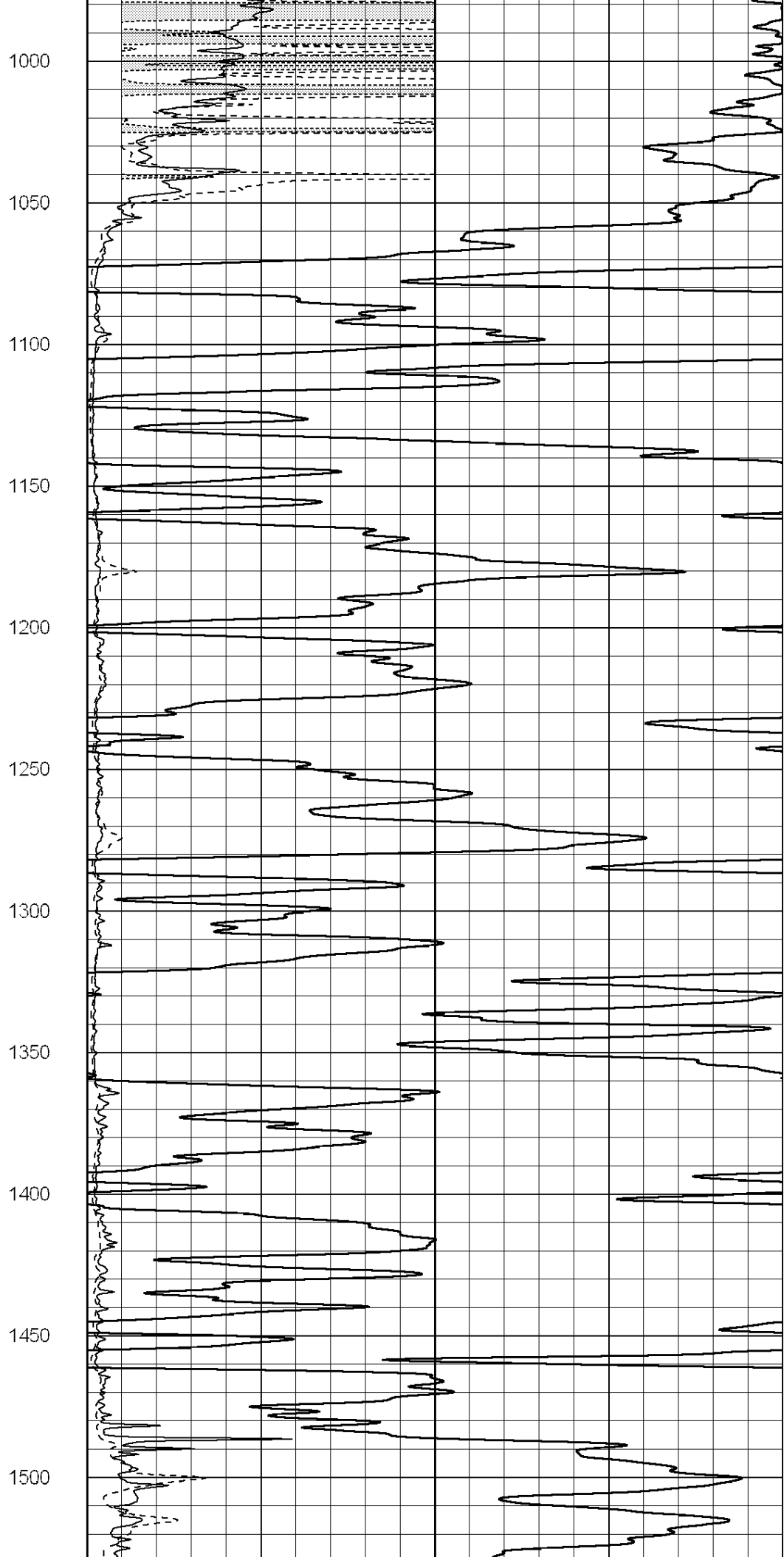
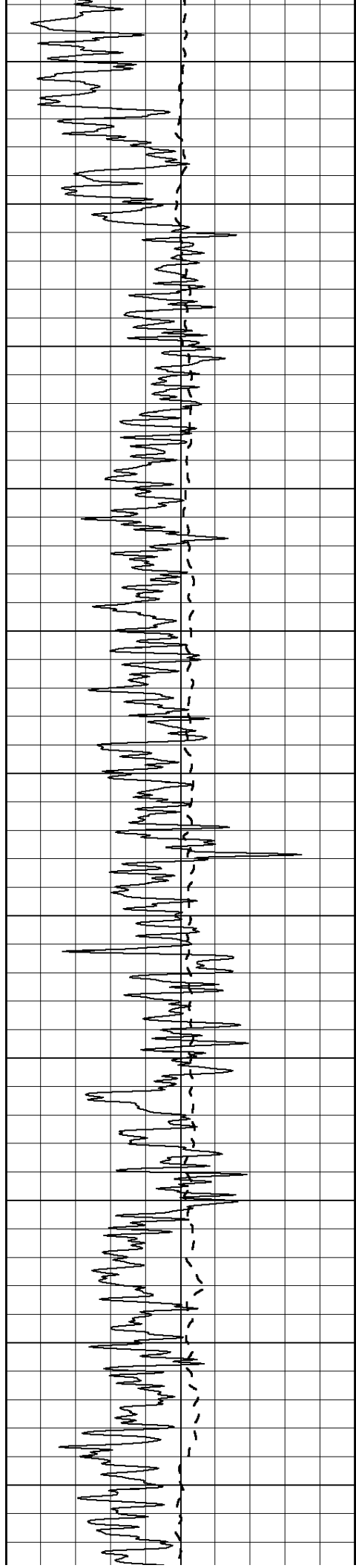
1000	CILD (mmho/m)	0
------	---------------	---

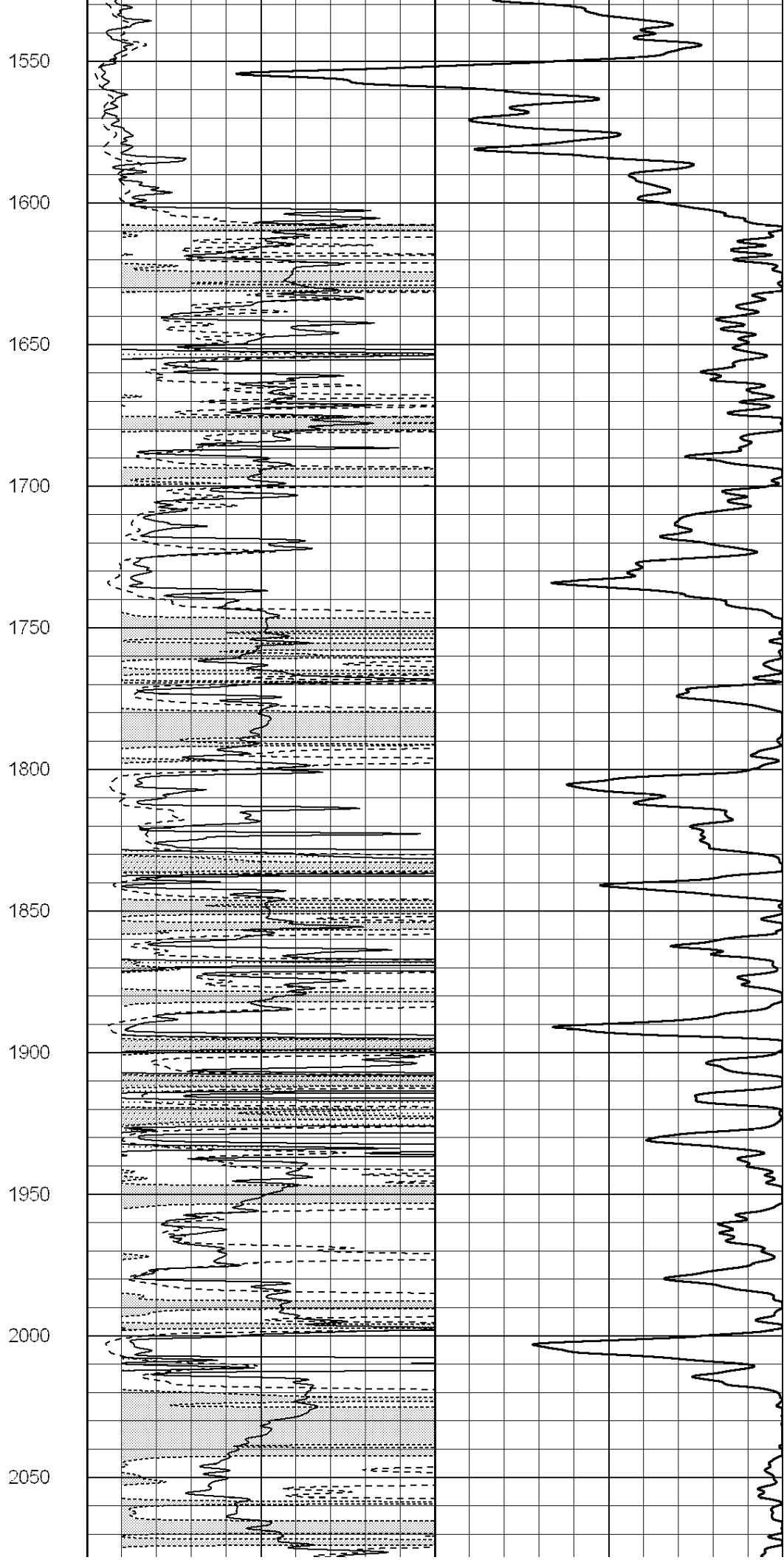
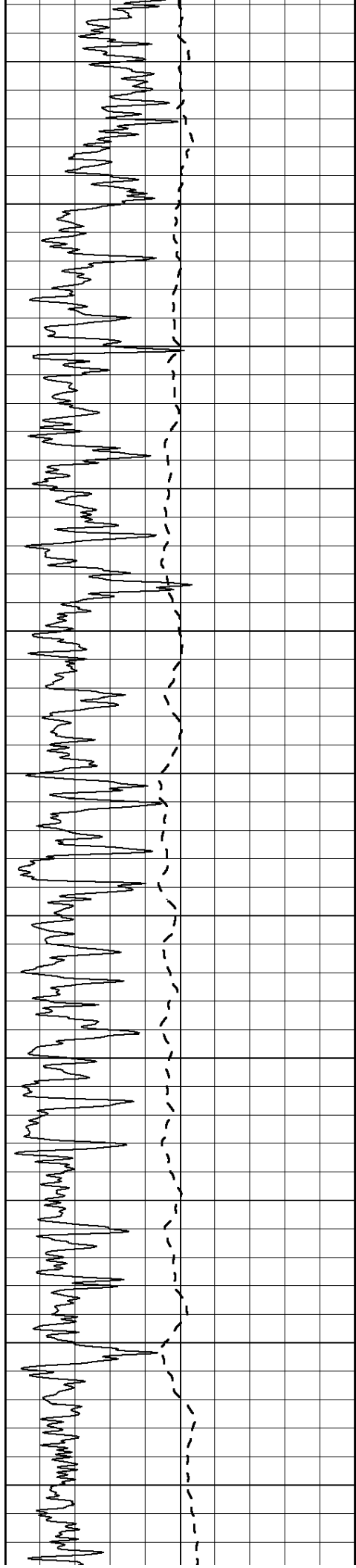
50	RILD X10 (Ohm-m)	500
----	------------------	-----

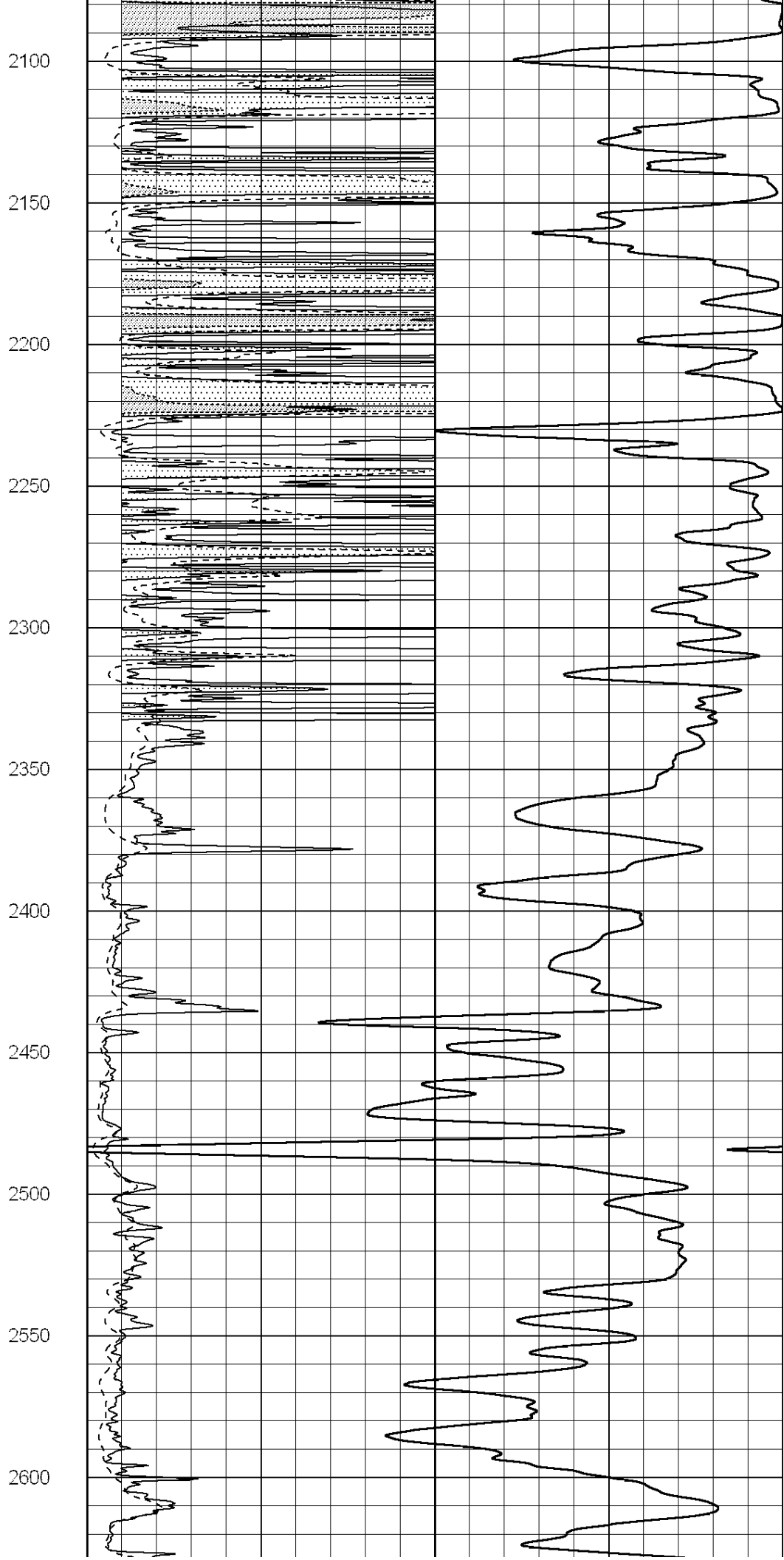
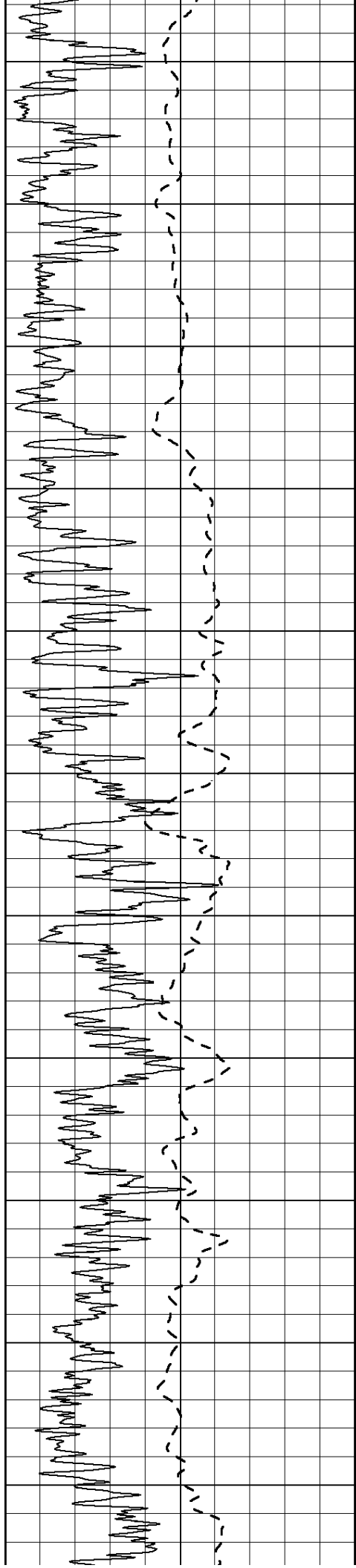
50	RLL3 X10 (Ohm-m)	500
----	------------------	-----

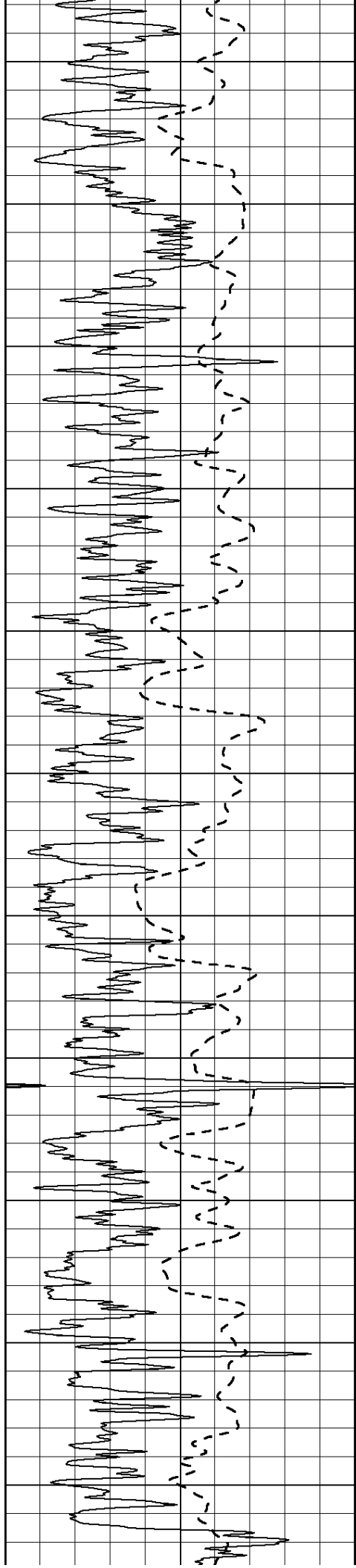












2650

2700

2750

2800

2850

2900

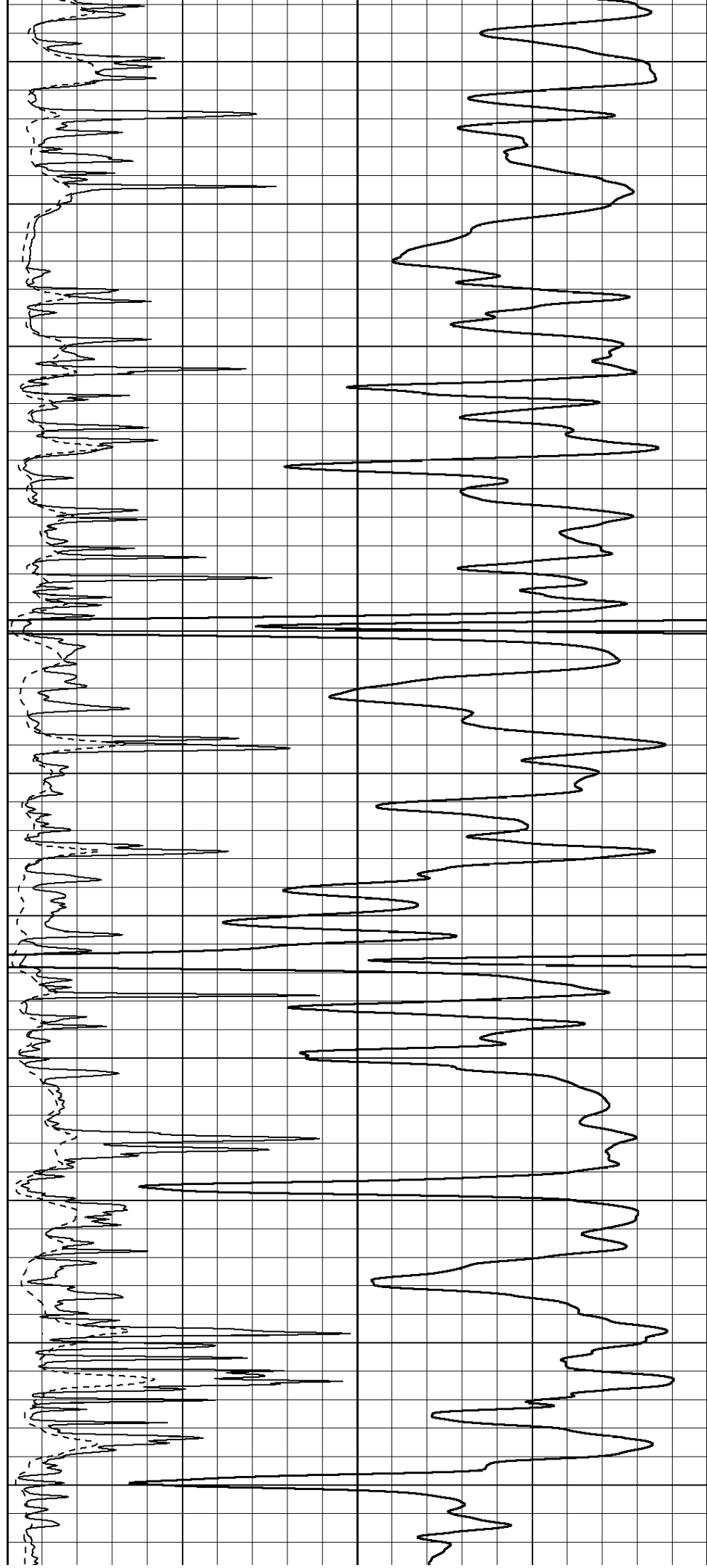
2950

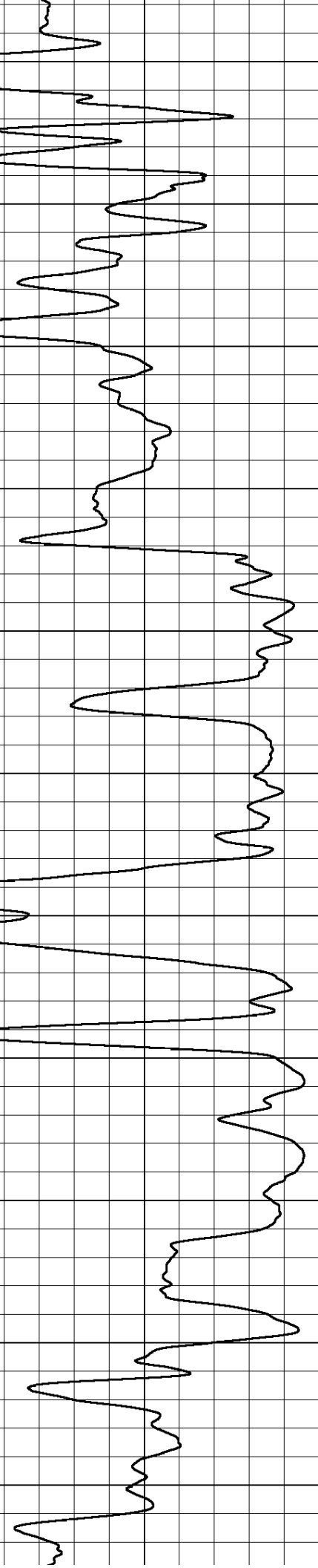
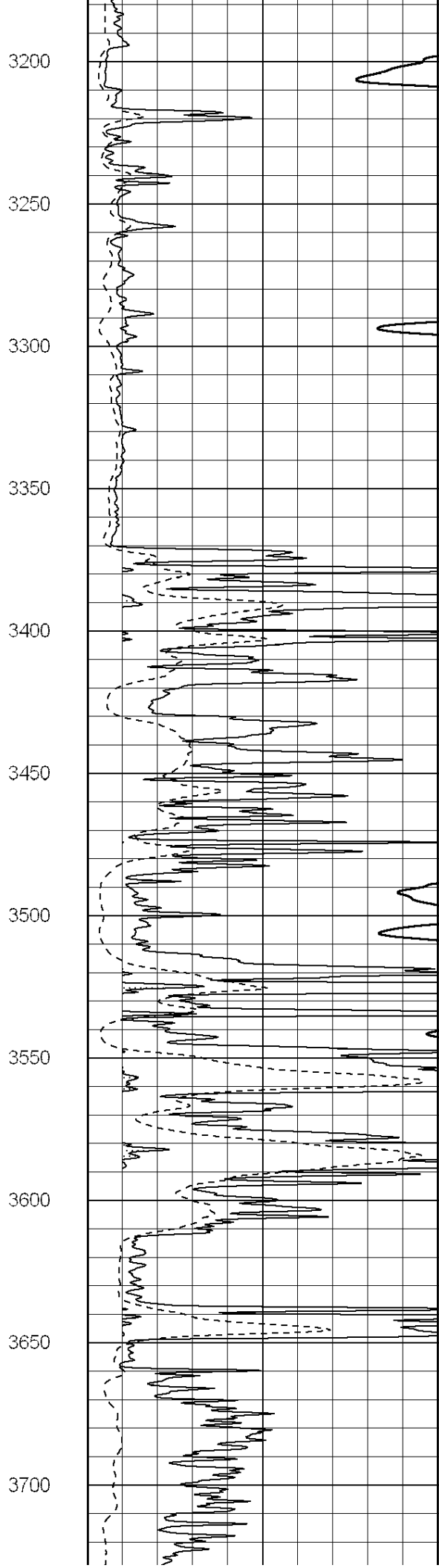
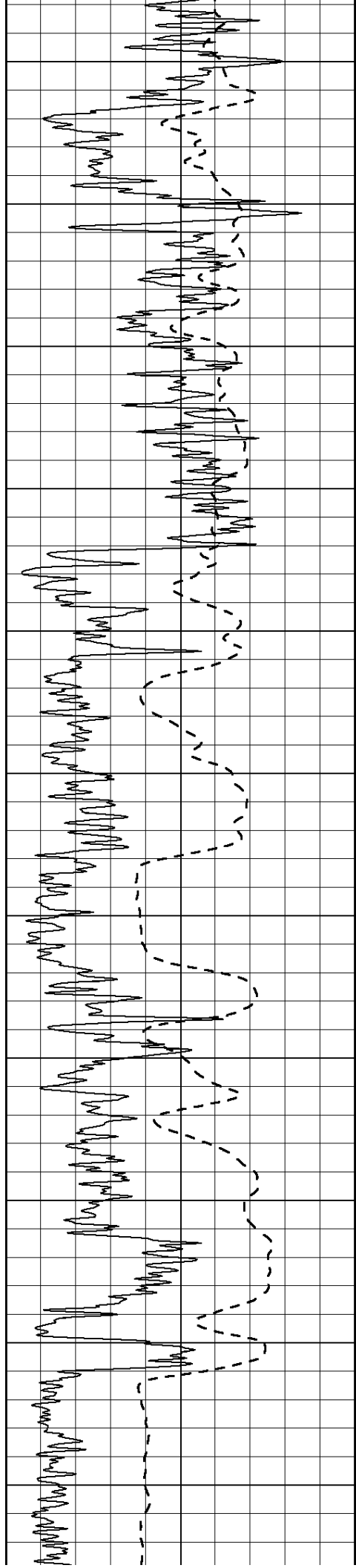
3000

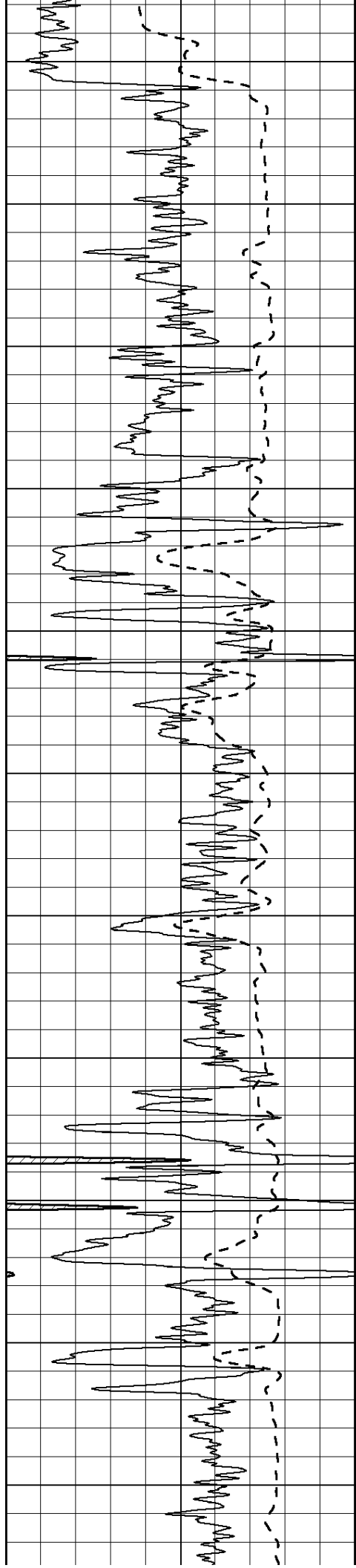
3050

3100

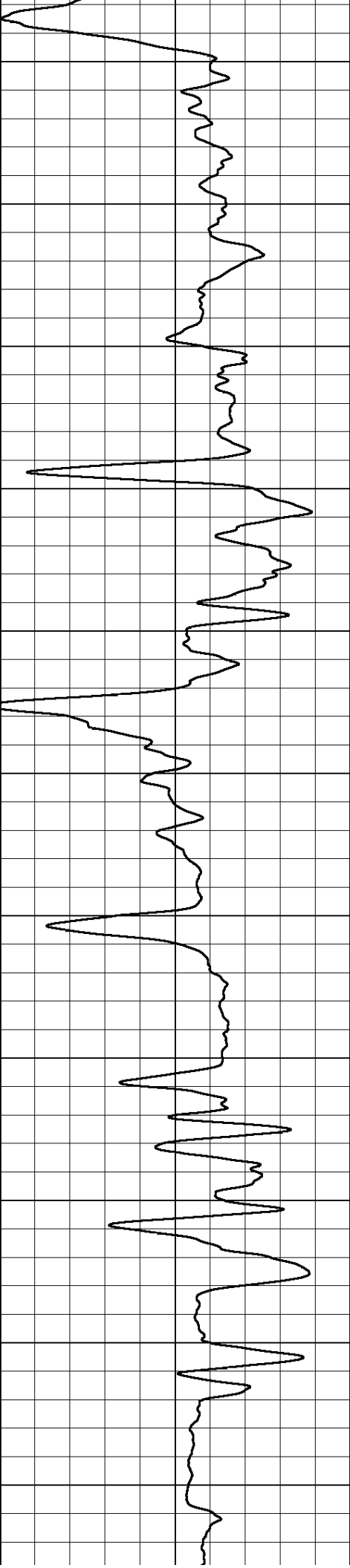
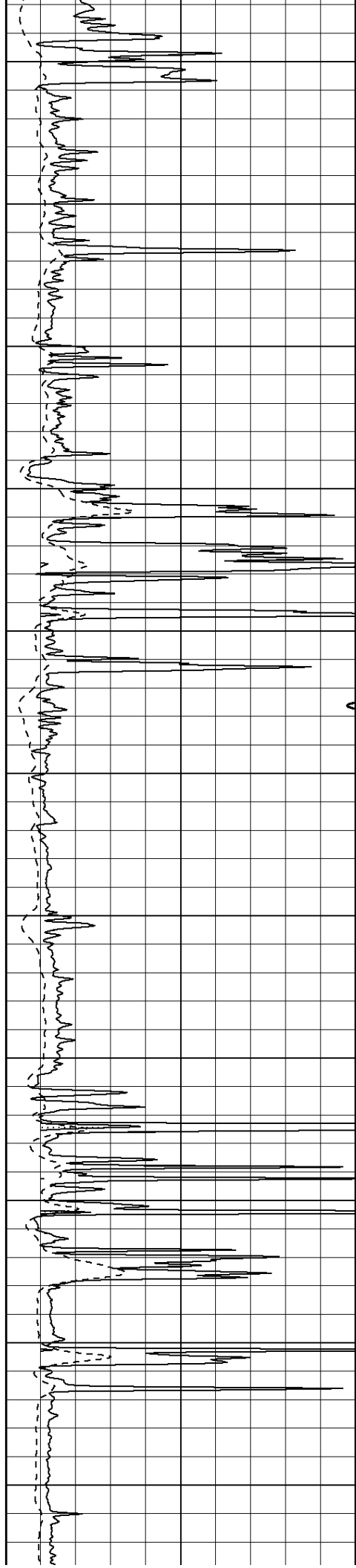
3150

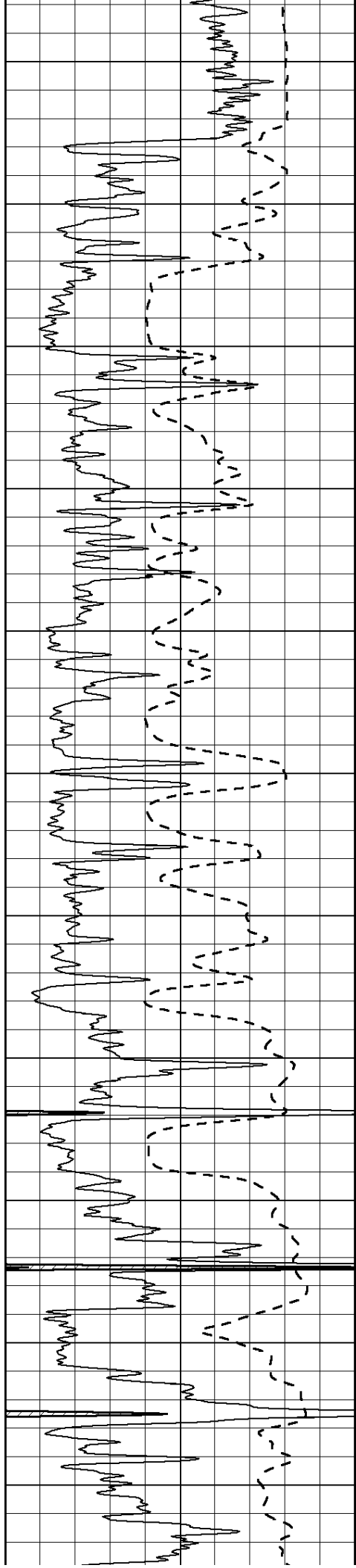






3750
3800
3850
3900
3950
4000
4050
4100
4150
4200
4250





4300

4350

4400

4450

4500

4550

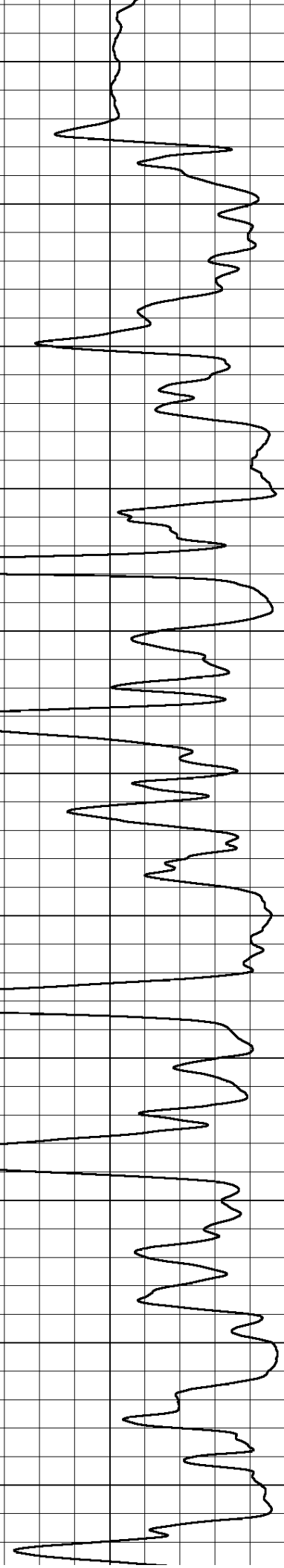
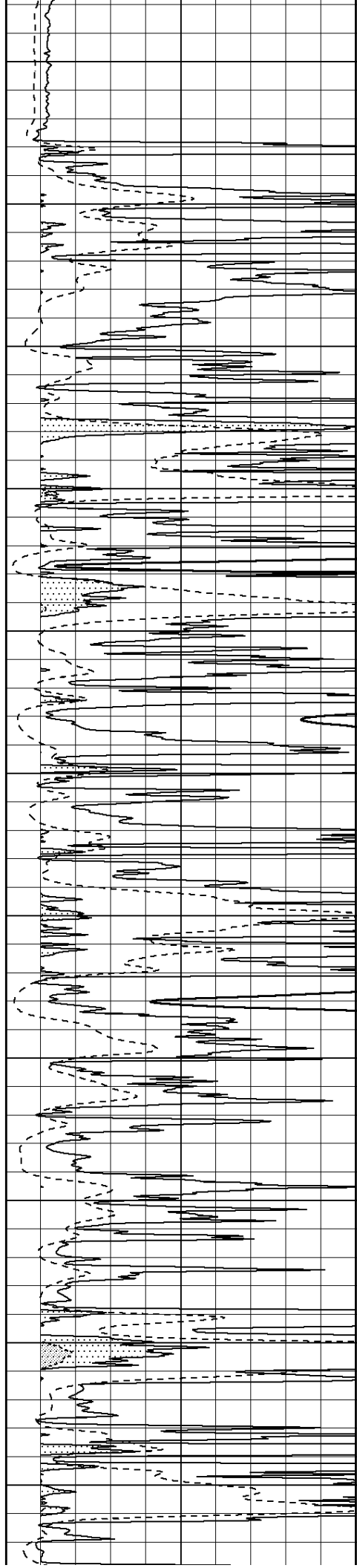
4600

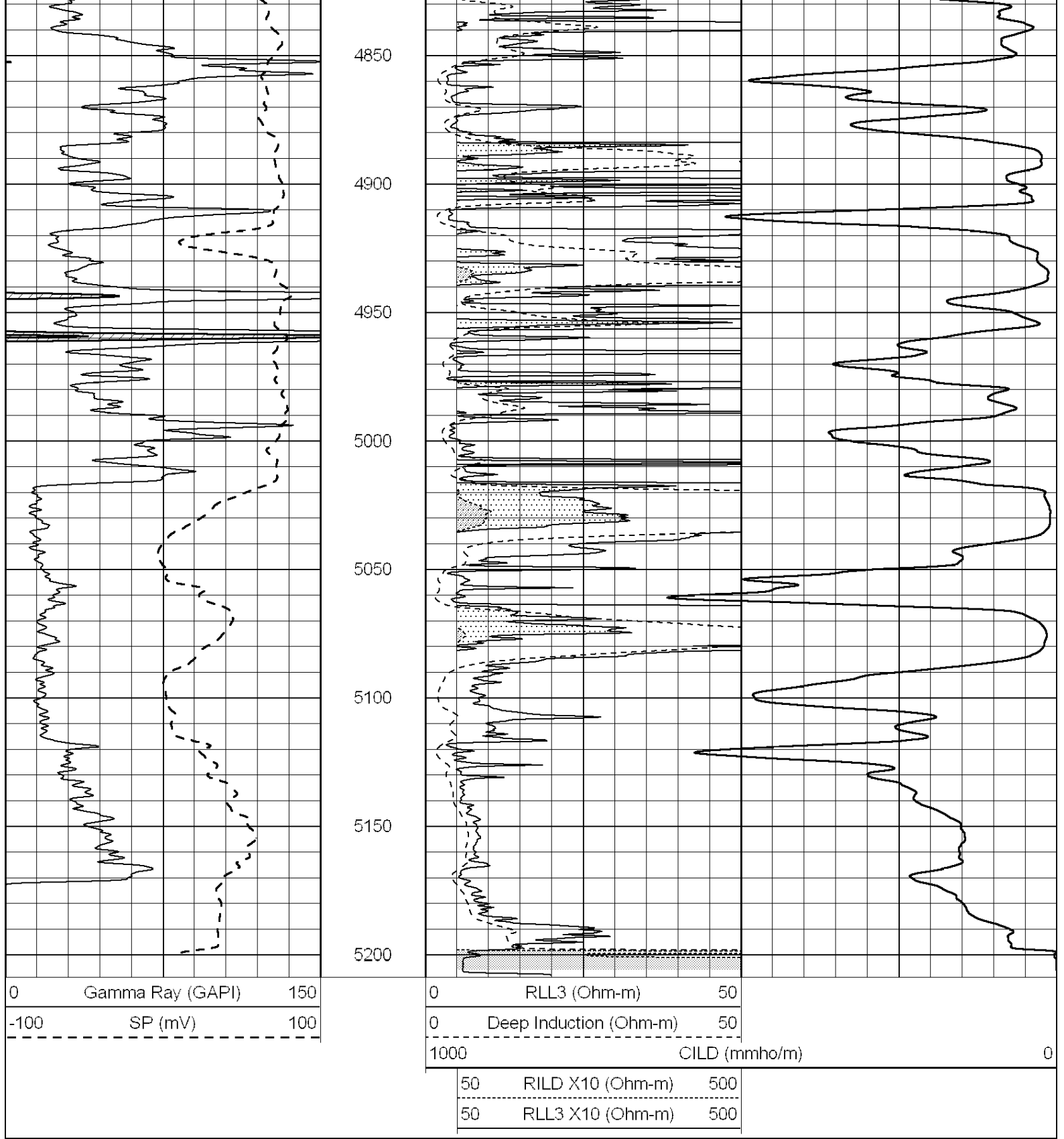
4650

4700

4750

4800





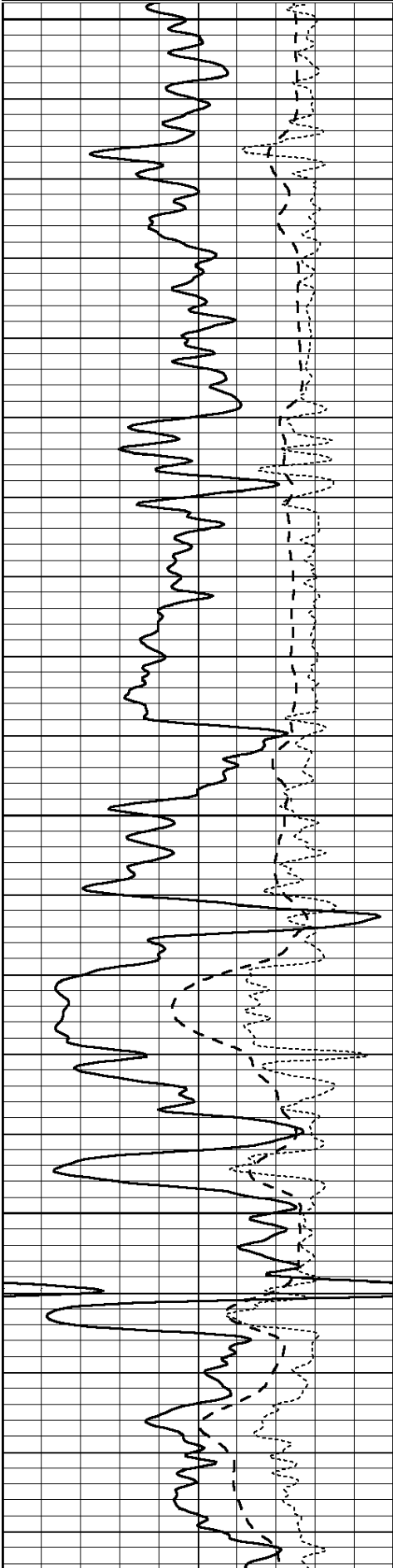
SUPERIOR
Hays,
Kansas

MAIN SECTION

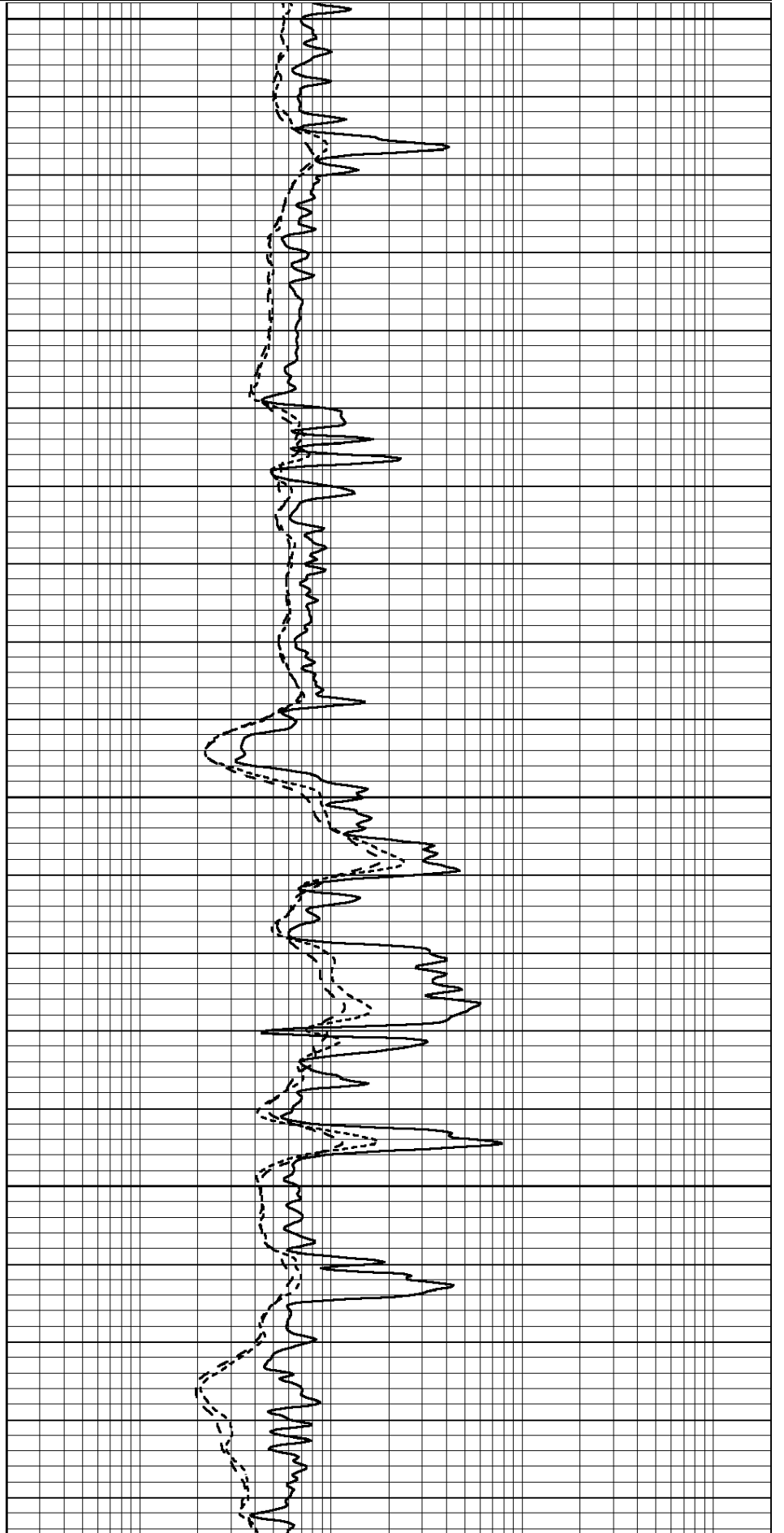
Database File: 006451ddn.db
 Dataset Pathname: pass3.1
 Presentation Format: _dil
 Dataset Creation: Sat Jan 22 19:04:42 2011 by Calc Open-Cased 090629
 Charted by: Depth in Feet scaled 1:240

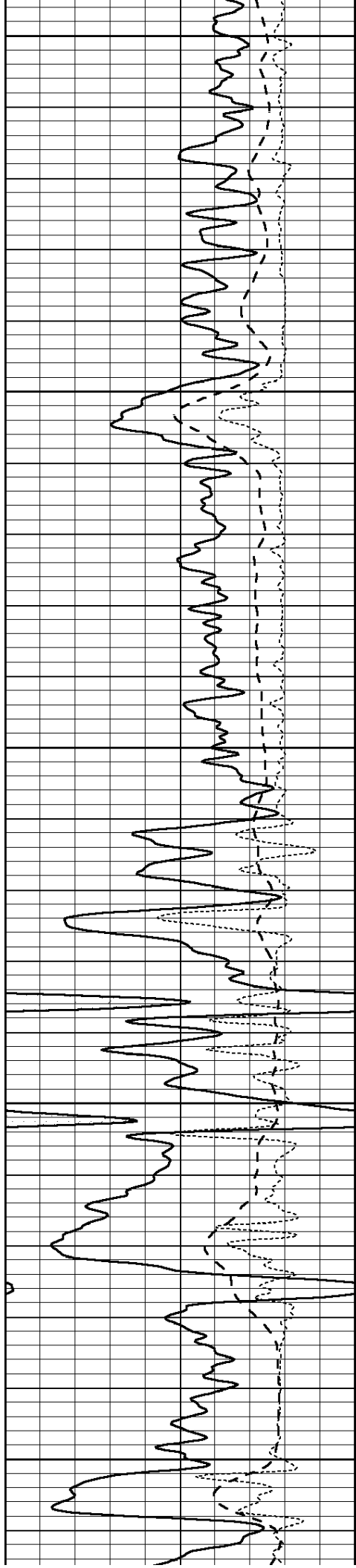
0	GAMMA RAY (GAPI)	150
-100	SP (mV)	100
-250	Rxo/Rt	50

0.2	SHALLOW GUARD (Ohm-m)	2000
0.2	MEDIUM INDUCTION (Ohm-m)	2000
0.2	DEEP INDUCTION (Ohm-m)	2000



3800
3850
3900
3950





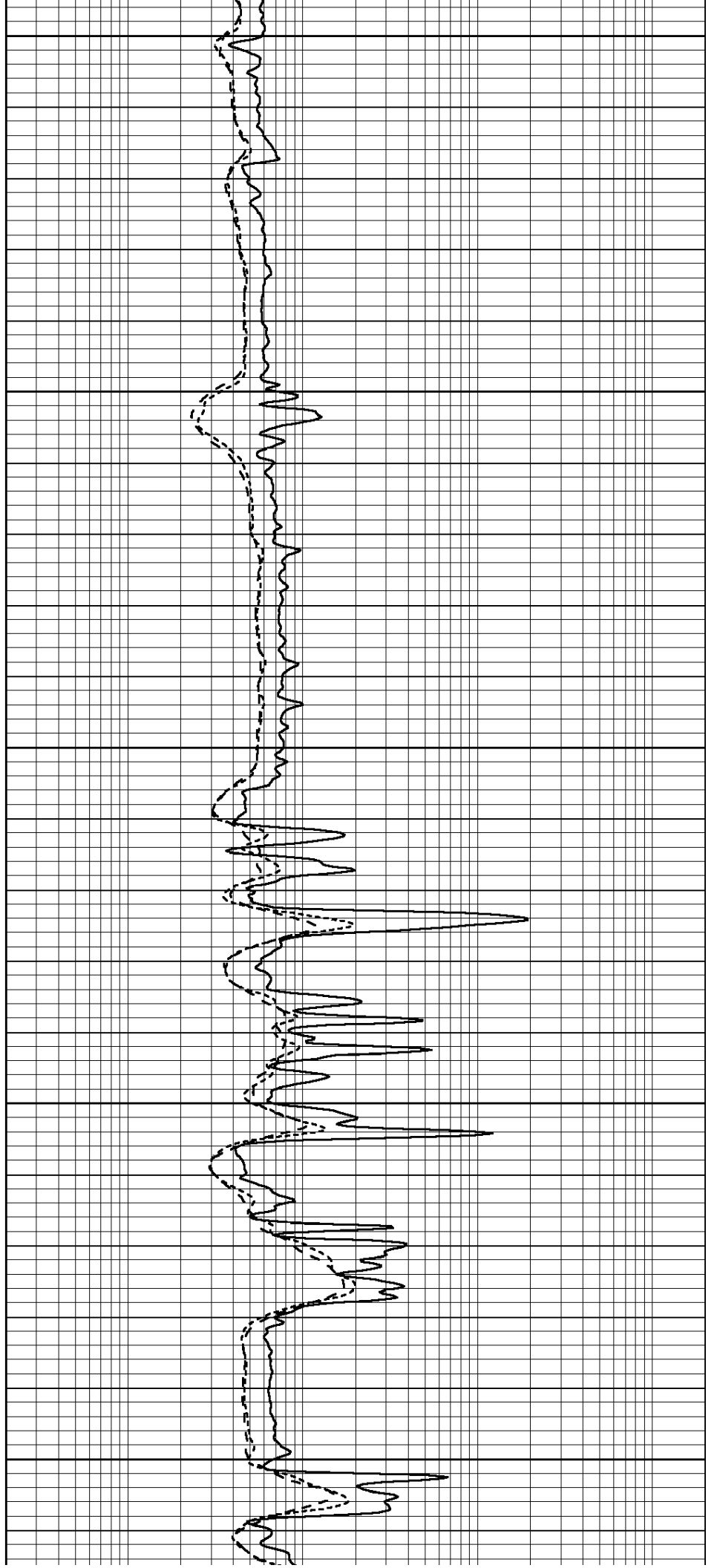
4000

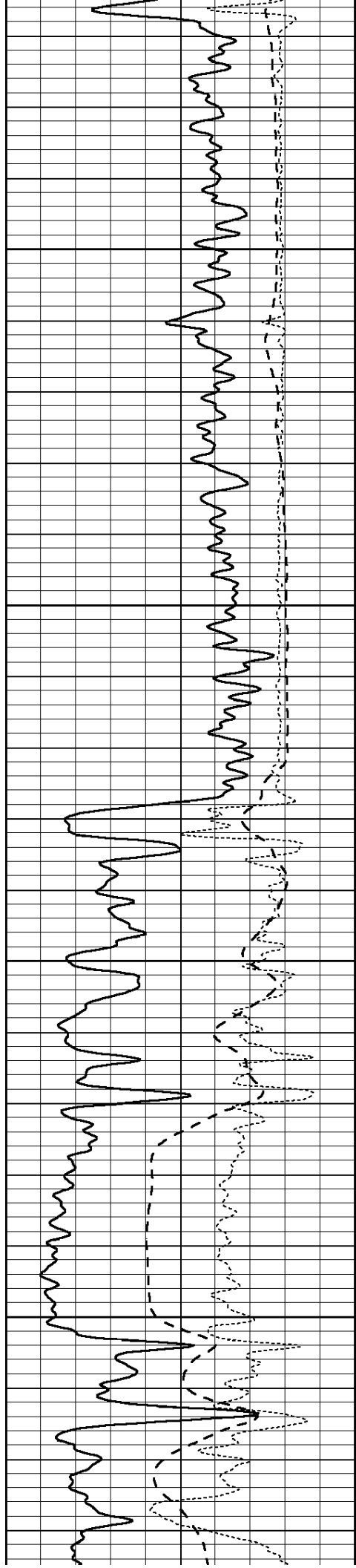
4050

4100

4150

4200



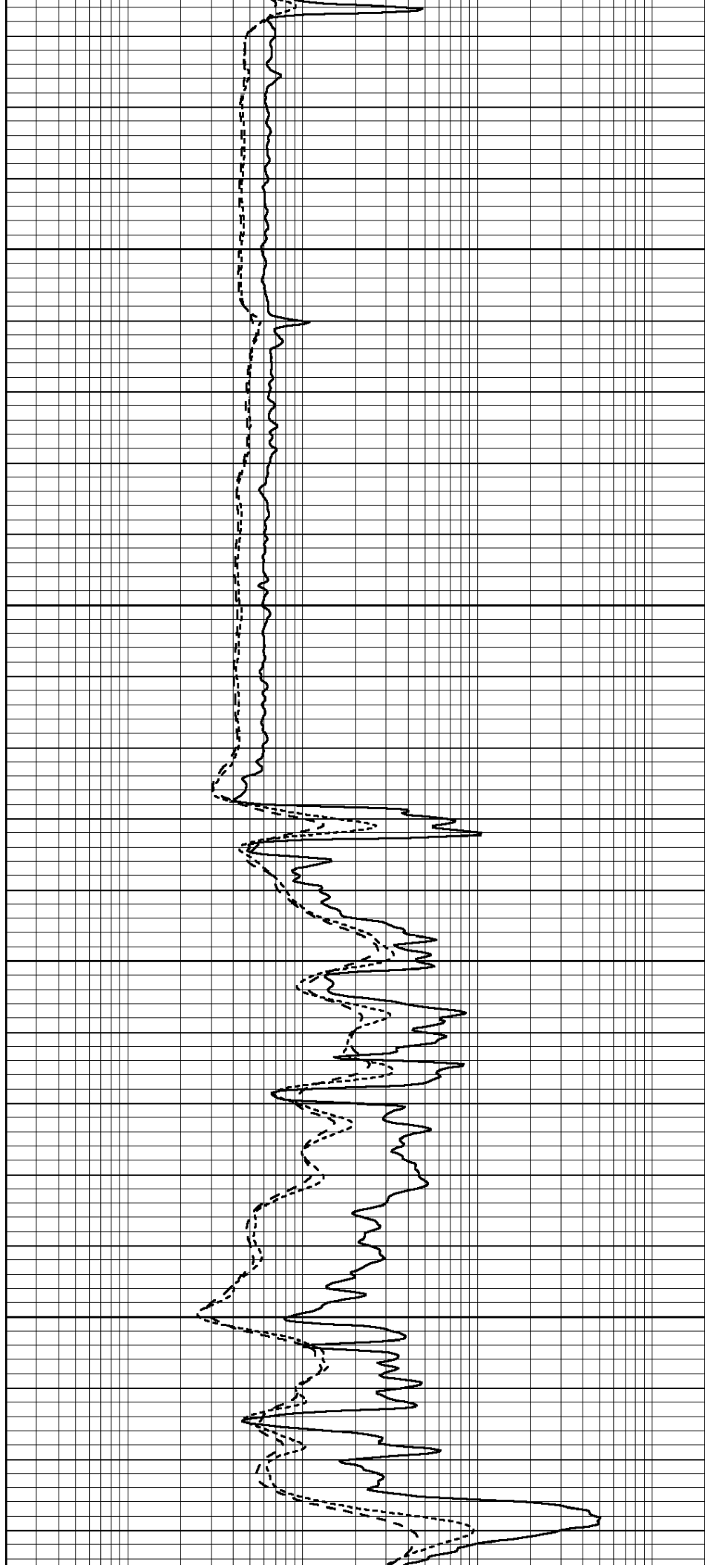


4250

4300

4350

4400





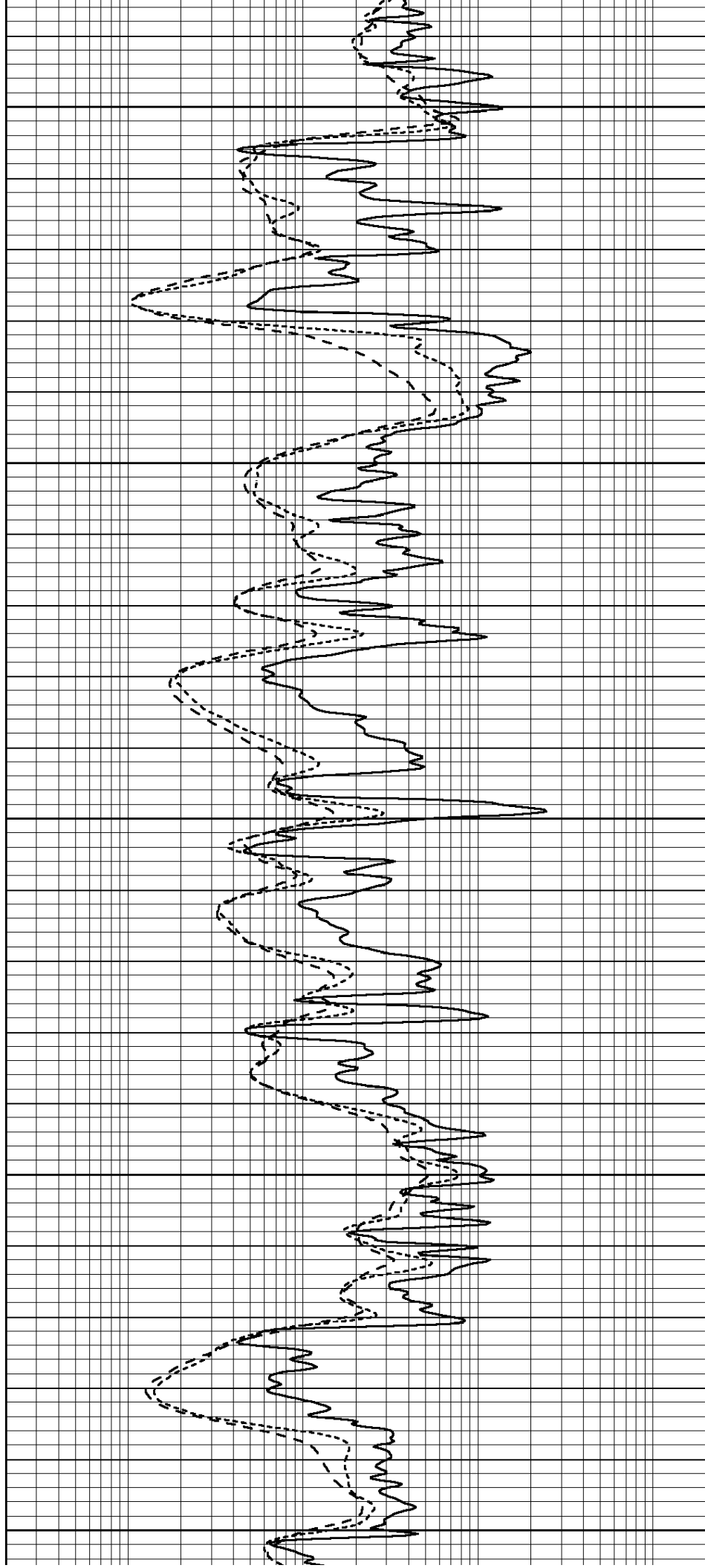
4450

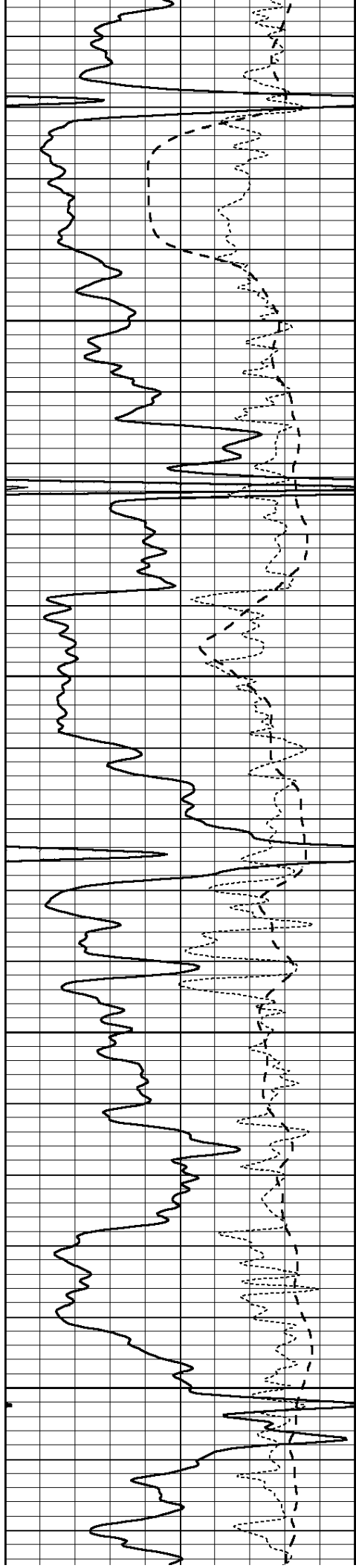
4500

4550

4600

4650



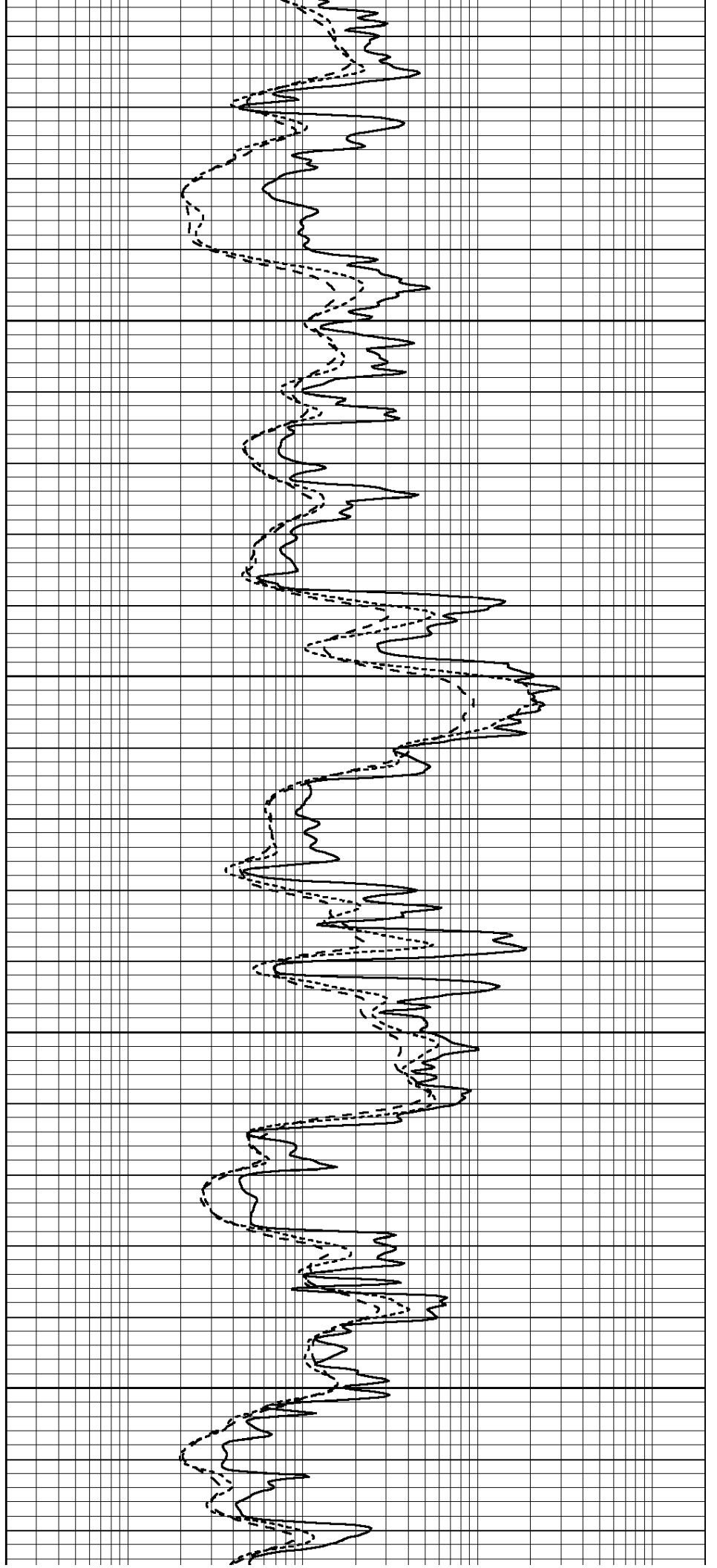


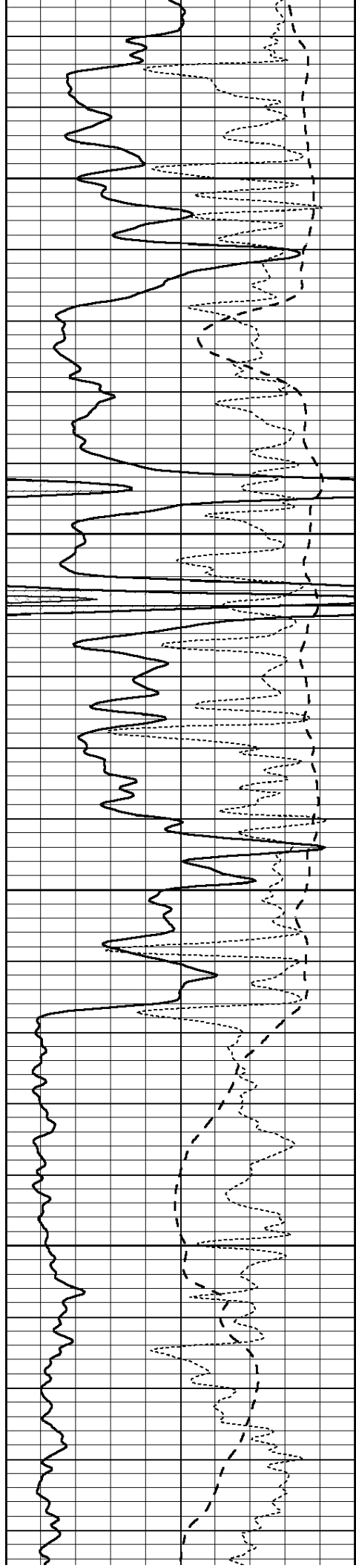
4700

4750

4800

4850



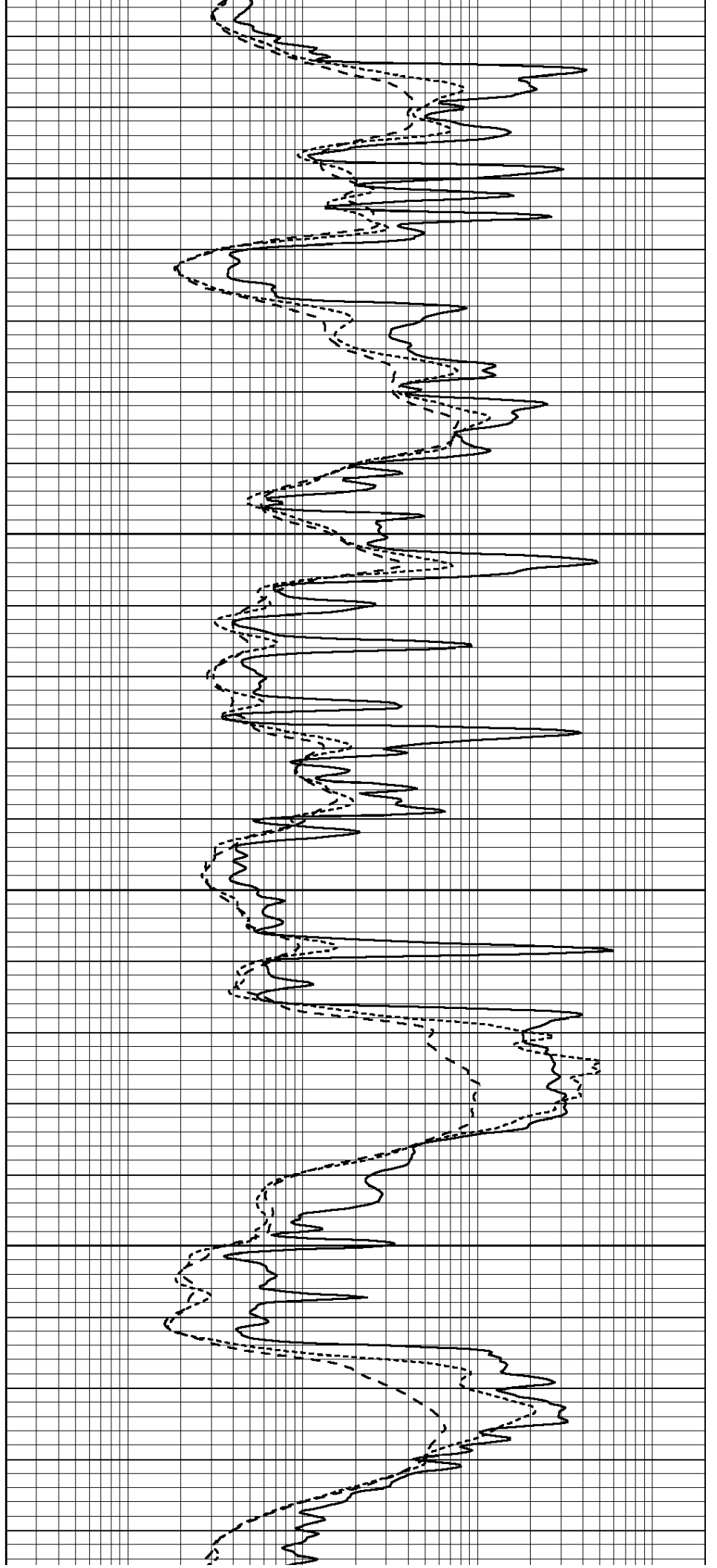


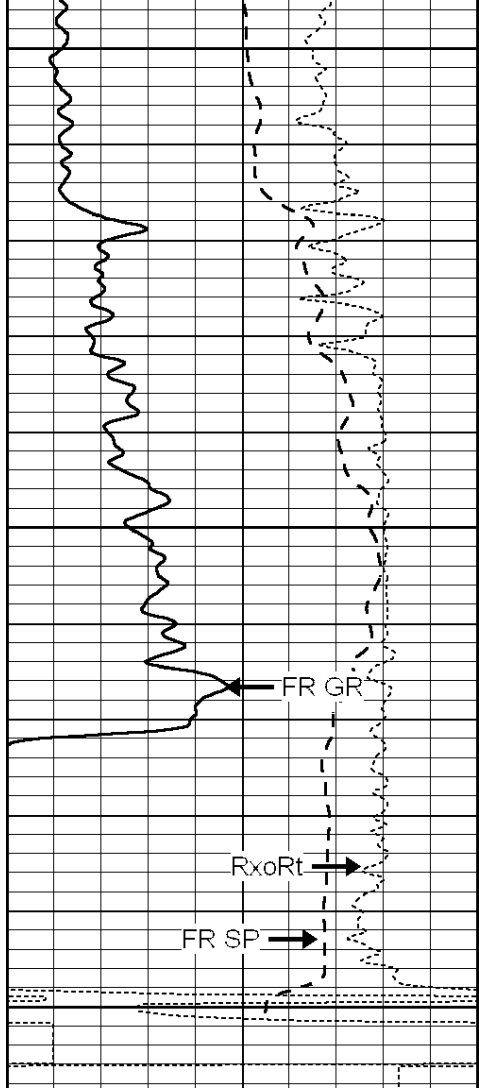
4900

4950

5000

5050



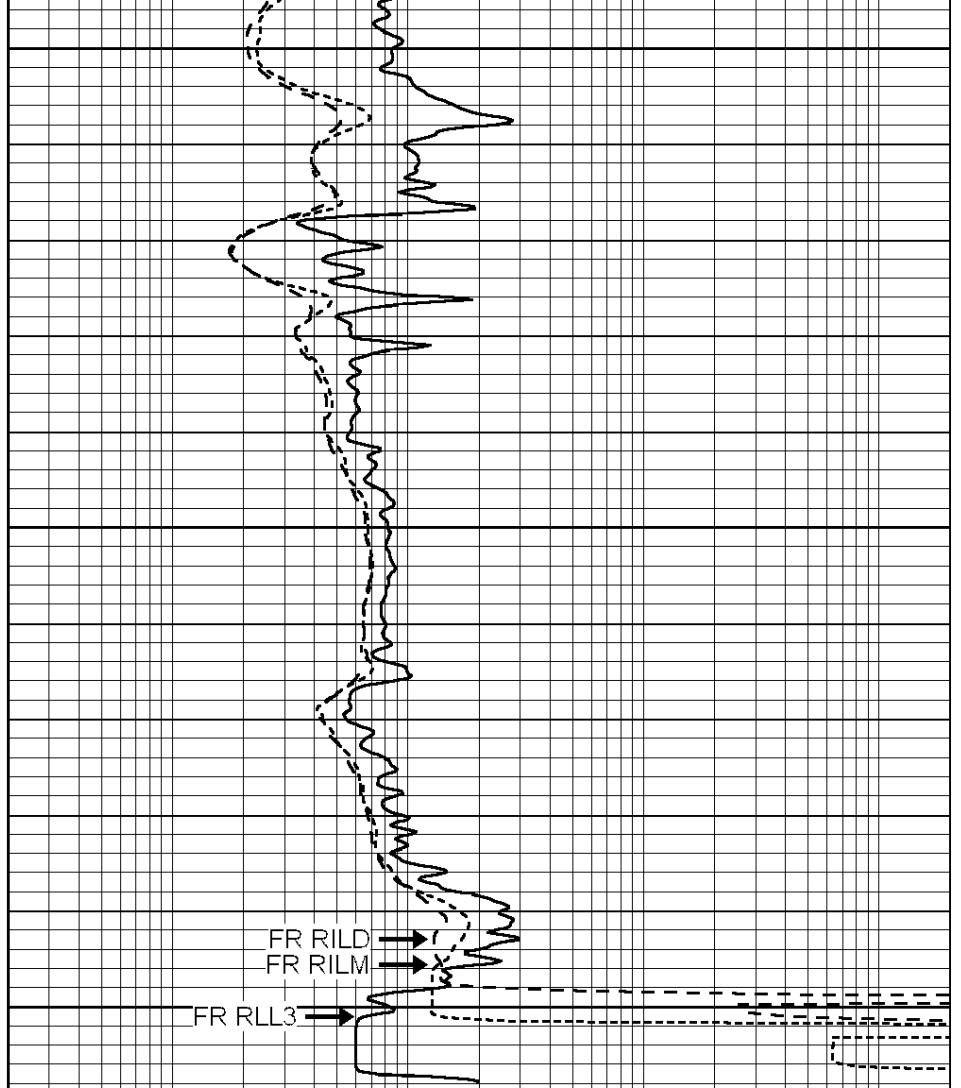


5100

5150

5200
LTD 5203

0	GAMMA RAY (GAPI)	150
-100	SP (mV)	100
-250	Rxo/Rt	50



0.2	SHALLOW GUARD (Ohm-m)	2000
0.2	MEDIUM INDUCTION (Ohm-m)	2000
0.2	DEEP INDUCTION (Ohm-m)	2000



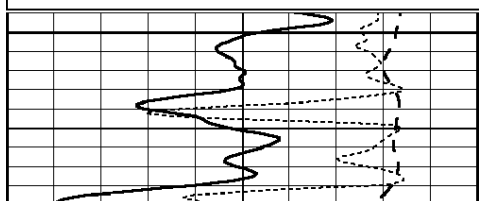
SUPERIOR
Hays,
Kansas

REPEAT SECTION

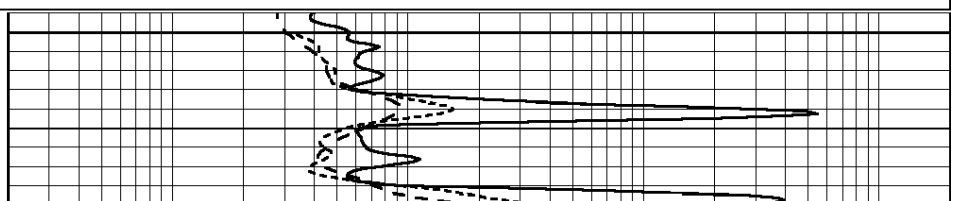
Database File: 006451ddn.db
 Dataset Pathname: pass2.1
 Presentation Format: _dil
 Dataset Creation: Sat Jan 22 18:44:00 2011 by Calc Open-Cased 090629
 Charted by: Depth in Feet scaled 1:240

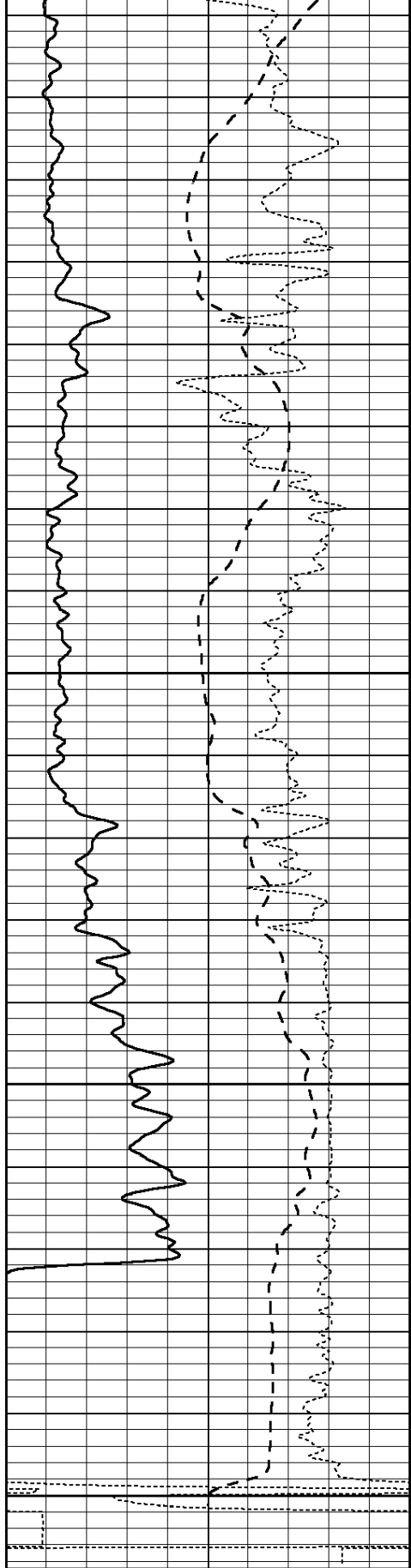
0	GAMMA RAY (GAPI)	150
-100	SP (mV)	100
-250	Rxo/Rt	50

0.2	SHALLOW GUARD (Ohm-m)	2000
0.2	MEDIUM INDUCTION (Ohm-m)	2000
0.2	DEEP INDUCTION (Ohm-m)	2000



5000





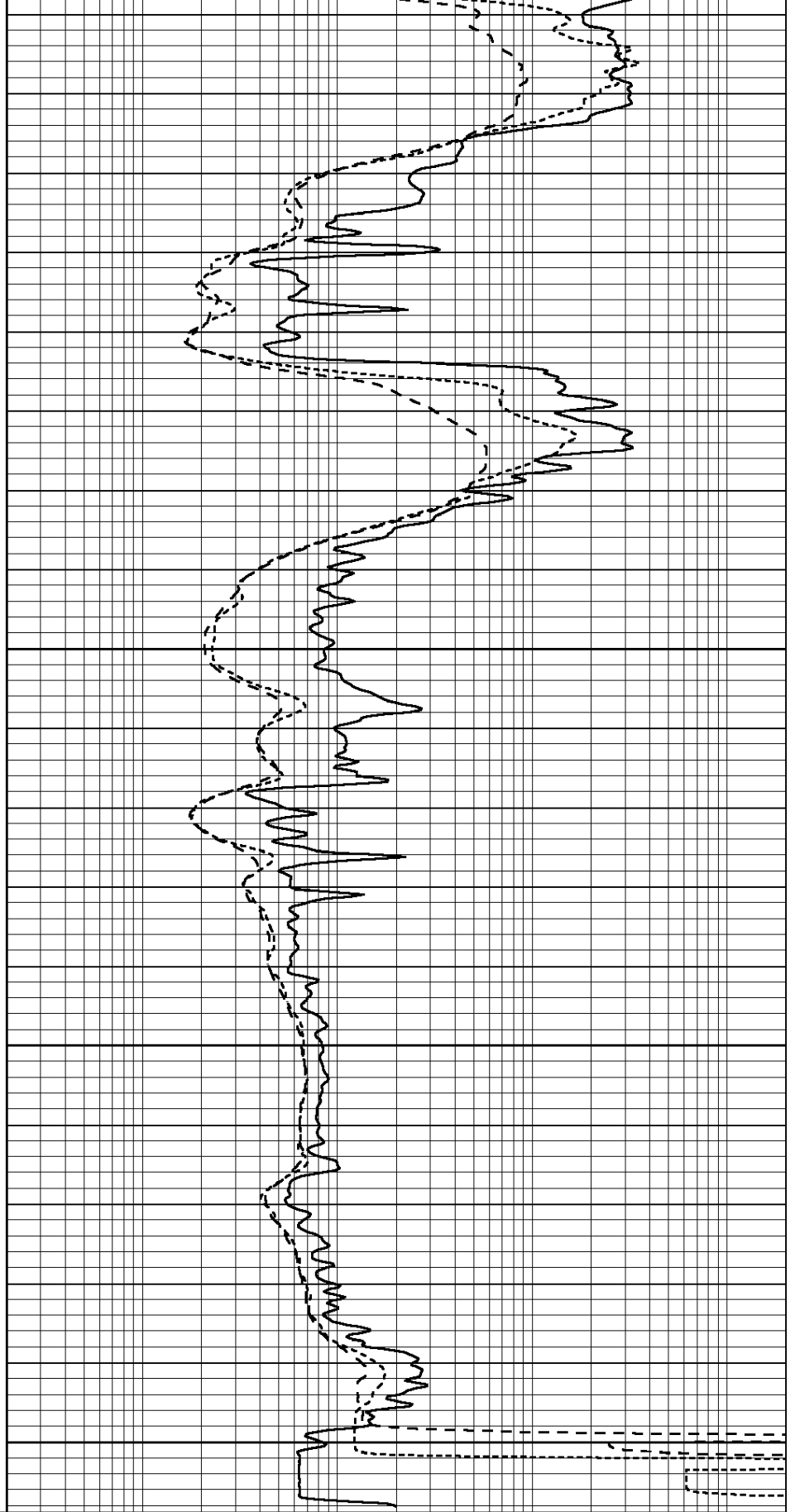
0	GAMMA RAY (GAPI)	150
-100	SP (mV)	100
-250	Rxo/Rt	50

5050

5100

5150

5200



0.2	SHALLOW GUARD (Ohm-m)	2000
0.2	MEDIUM INDUCTION (Ohm-m)	2000
0.2	DEEP INDUCTION (Ohm-m)	2000

Dual Induction Calibration Report

Serial-Model: PROBE7-DILG
 Surface Cal Performed: Wed Jul 30 06:14:24 2008
 Downhole Cal Performed: Mon Jul 28 12:02:56 2008
 After Survey Verification Performed: Mon Jul 28 12:02:56 2008

Surface Calibration

Loop:	Readings			References			Results	
	Air	Loop		Air	Loop		m	b
Deep	-0.014	0.629	V	0.000	400.000	mmho/m	621.923	8.759
Medium	0.039	0.728	V	0.000	464.000	mmho/m	673.322	-26.058
Internal:	Zero	Cal		Zero	Cal		m	b
Deep	0.011	0.610	V	0.000	400.000	mmho/m	667.135	-7.256
Medium	0.005	0.712	V	0.000	464.000	mmho/m	655.677	-3.102

Downhole Calibration

	Readings			References			Results	
	Zero	Cal		Zero	Cal		m'	b'
Deep	0.000	0.000	mmho/m	14.508	388.384	mmho/m	1.000	0.000
Medium	0.000	0.000	mmho/m	166.367	504.400	mmho/m	1.000	0.000
LL3		7.500	V		1400.000	Ohm-m		
		0.000	V		20.000	Ohm-m		
		-7.200	V		4000.000	mmho-m		

After Survey Verification

	Readings			Targets			Results	
	Zero	Cal		Zero	Cal		m'	b'
Deep	0.000	0.000	mmho/m	0.000	0.000	mmho/m	0.000	0.000
Medium	0.000	0.000	mmho/m	0.000	0.000	mmho/m	0.000	0.000
LL3		1.000	Ohm-m		1.000	Ohm-m		
		0.000	Ohm-m		0.000	Ohm-m		
		1.000	mmho-m		1.000	mmho-m		

Compensated Density Calibration Report

Serial-Model: GEAR4-GEARHART
 Source / Verifier: 143 / 143
 Master Calibration Performed: Tue May 11 10:59:10 2010

Master Calibration

	Density			Far Detector		Near Detector	
Magnesium	1.710	g/cc		1015.91	497.51	cps	
Aluminum	2.600	g/cc		227.67	350.20	cps	
Spine Angle = 76.79				Density/Spine Ratio = 0.579			
	Size			Reading			
Small Ring	8.00	in		2.50	V		
Large Ring	14.00	in		4.70	V		

Compensated Neutron Calibration Report

Serial Number: 51

CALIBRATION

Detector	Readings	Target	Normalization
Short Space	1.00 cps	1.00 cps	1.0000
Long Space	1.00 cps	1.00 cps	1.0000

Gamma Ray Calibration Report

Serial Number:	GR6
Tool Model:	OPEN
Performed:	Wed Jul 14 14:14:30 2010
Calibrator Value:	150.0 GAPI
Background Reading:	0.0 cps
Calibrator Reading:	276.0 cps
Sensitivity:	0.8000 GAPI/cps