



SUPERIOR
Hays,
Kansas

MICRO
LOG

Company CASTELLI EXPLORATION, INC.
Well GREGG #7-19
Field SHIMER
County COMANCHE
State KANSAS

Company CASTELLI EXPLORATION, INC.
Well GREGG #7-19
Field SHIMER
County COMANCHE State KANSAS

Location: API # : 15-033-21578-0000
2310' FNL & 660' FEL
N2 - NE - NE
SEC 19 TWP 33S RGE 16W
Permanent Datum GROUND LEVEL Elevation 1825
Log Measured From KELLY BUSHING 13' A.G.L.
Drilling Measured From KELLY BUSHING
Other Services
CDL/CNL
DIL
Elevation
K.B. 1838
D.F. 1836
G.L. 1825

Date	1/22/10
Run Number	TWO
Depth Driller	5200
Depth Logger	5203
Bottom Logged Interval	5201
Top Log Interval	3800
Casing Driller	13 3/8" @ 345
Casing Logger	342
Bit Size	7 7/8
Type Fluid in Hole	CHEMICAL MUD
Density / Viscosity	9.2/53
pH / Fluid Loss	10.5/8.8
Source of Sample	FLOWLINE
Rim @ Meas. Temp	1.0 @ 65F
Rmf @ Meas. Temp	.75 @ 65F
Rmc @ Meas. Temp	1.20 @ 65F
Source of Rmf / Rmc	MEASURED
Rim @ BHT	.51 @ 126F
Time Circulation Stopped	2 HOURS
Time Logger on Bottom	
Maximum Recorded Temperature	126F
Equipment Number	680
Location	HAYS, KS.
Recorded By	JASON CAPPELLUCCI
Witnessed By	RICK POPP

<<< Fold Here >>>

All interpretations are opinions based on inferences from electrical or other measurements and we cannot and do not guarantee the accuracy or correctness of any interpretation, and we shall not, except in the case of gross or willful negligence on our part, be liable or responsible for any loss, costs, damages, or expenses incurred or sustained by anyone resulting from any interpretation made by any of our officers, agents or employees. These interpretations are also subject to our general terms and conditions set out in our current Price Schedule.

Comments

THANK YOU FOR USING SUPERIOR WELL SERVICE (785) 628-6395
DIRECTIONS
COLDWATER, KS. - 9 E. TO MM 193 - 4 S. TO STOP SIGN - 2 E. TO CURVE
3 S. PAST 3 CATTLE GUARDS - ON WEST SIDE OF METAL BUILDING,
GO 2 MILES SOUTH INTO PAST 3 LOCATIONS

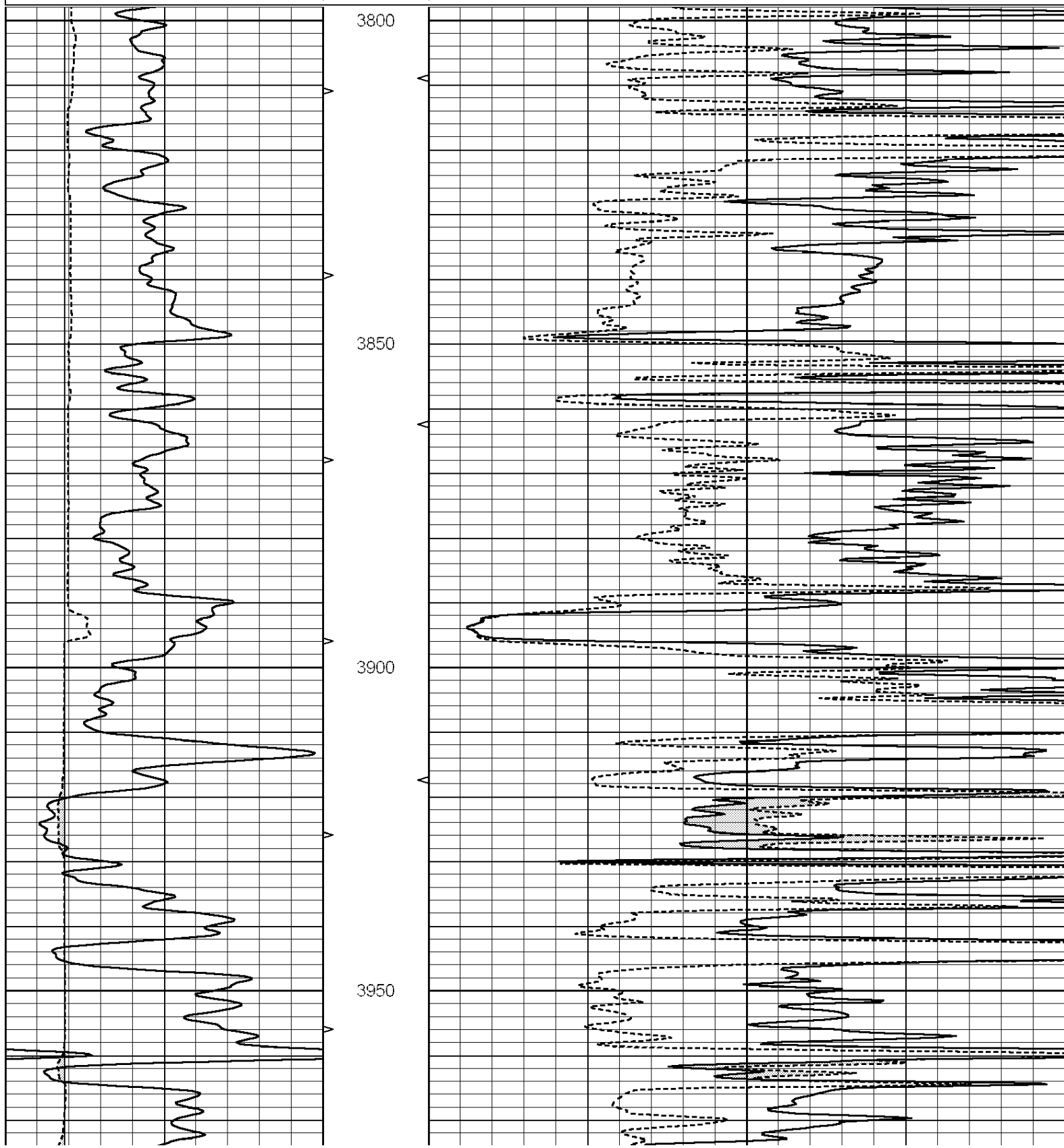


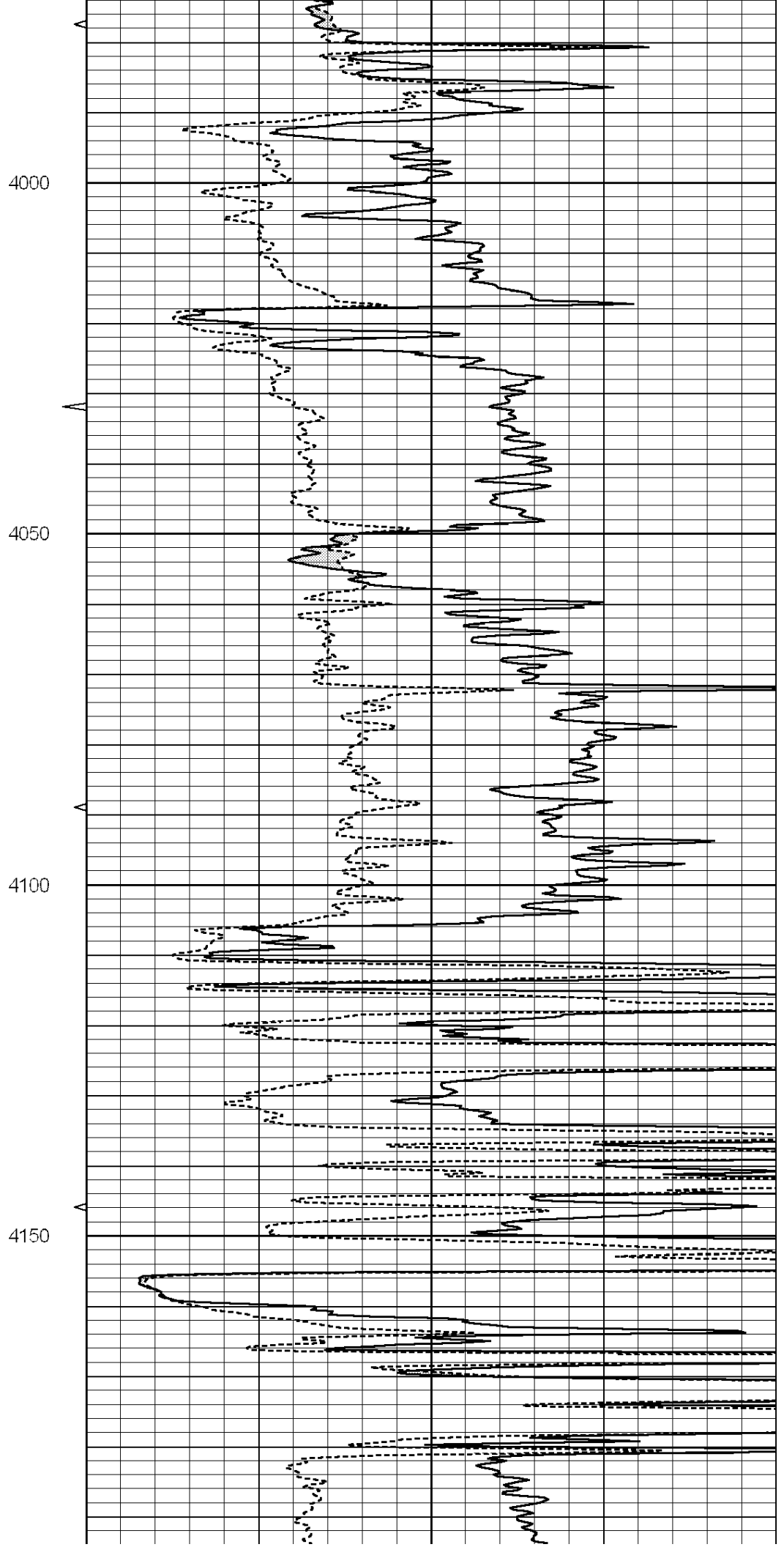
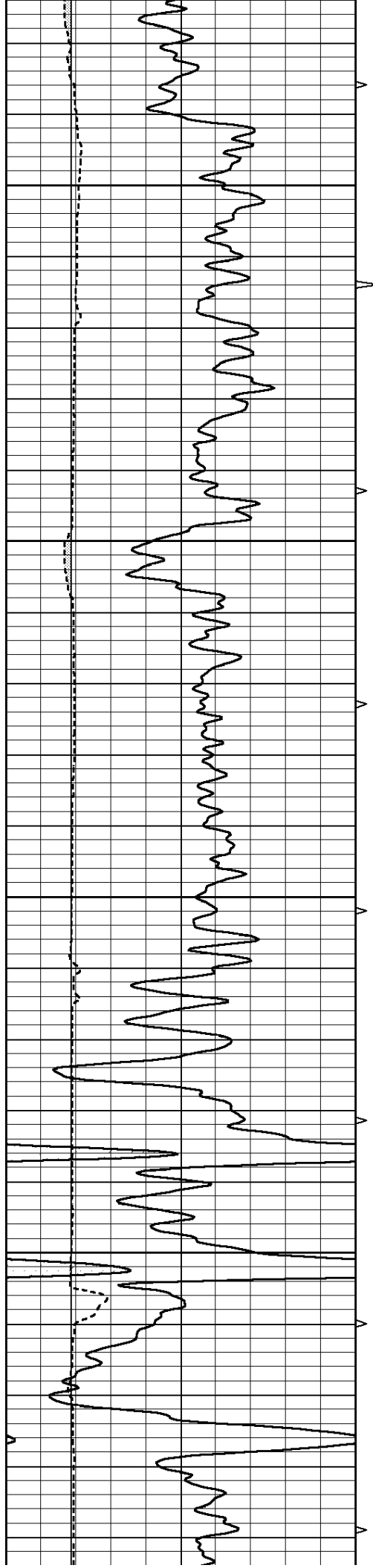
SUPERIOR
Hays,
Kansas

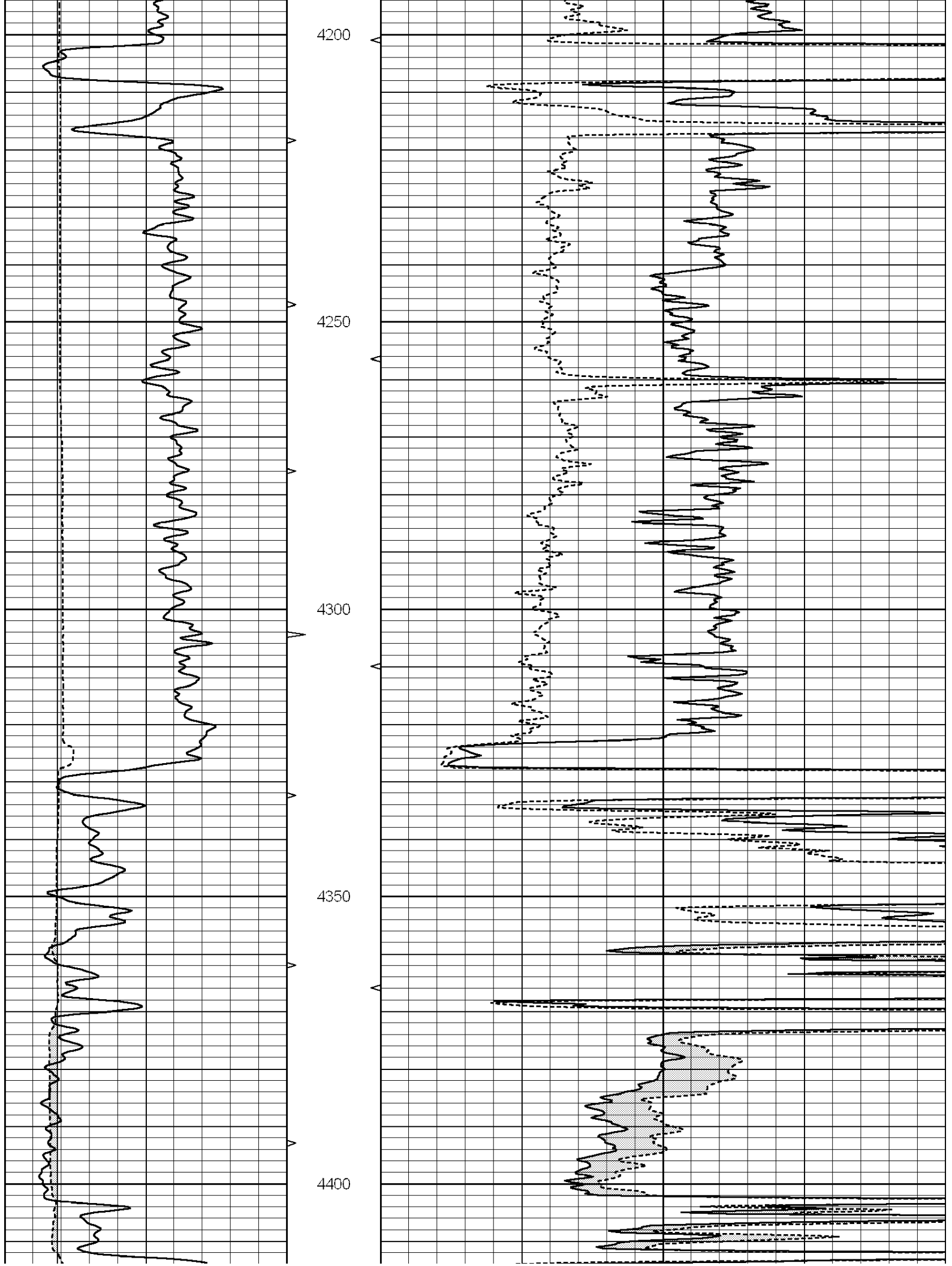
MAIN SECTION

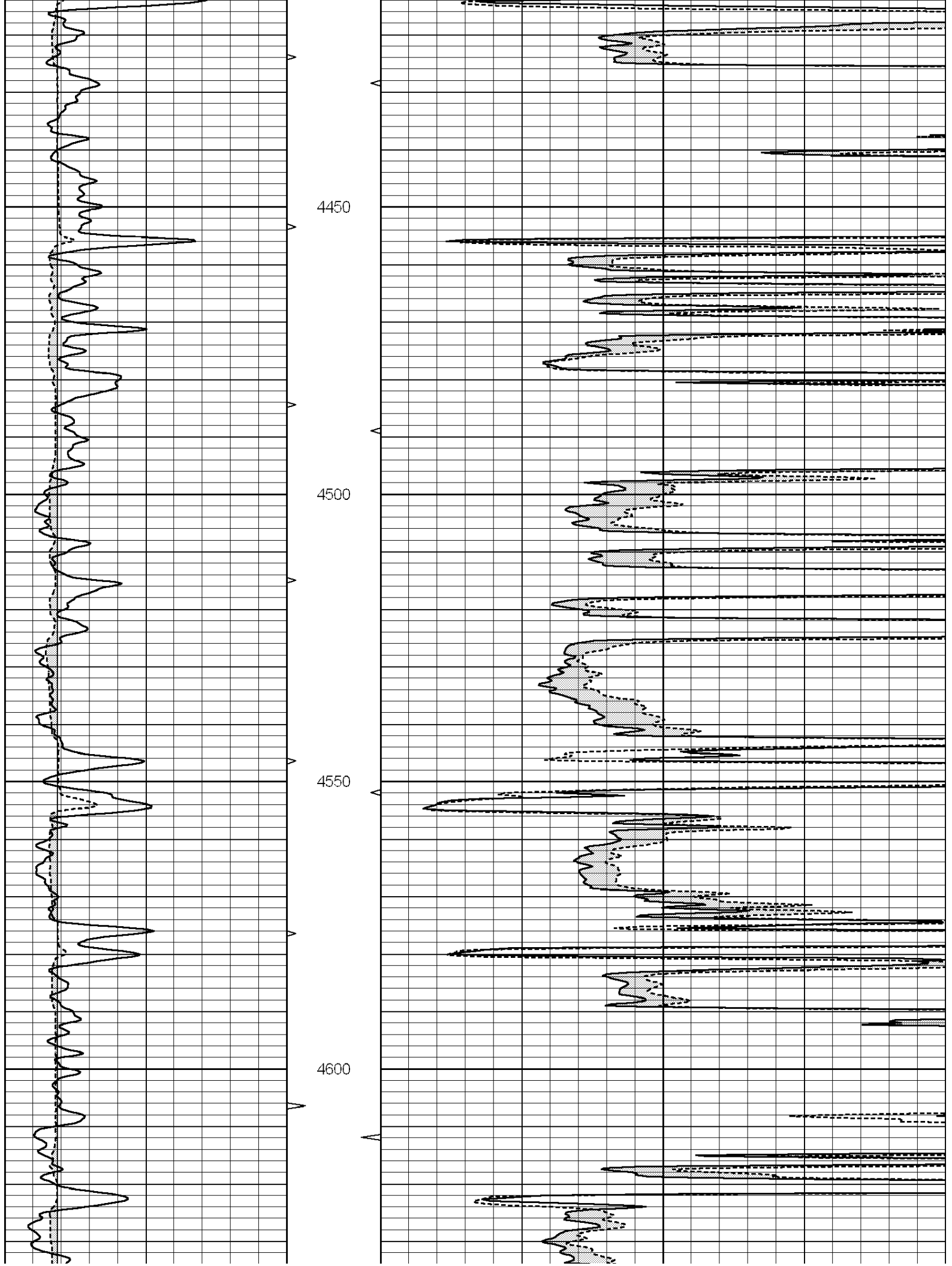
Database File: 006451ddn.db
 Dataset Pathname: pass6.1
 Presentation Format: _micro
 Dataset Creation: Sat Jan 22 21:16:58 2011 by Calc Open-Cased 090629
 Charted by: Depth in Feet scaled 1:240

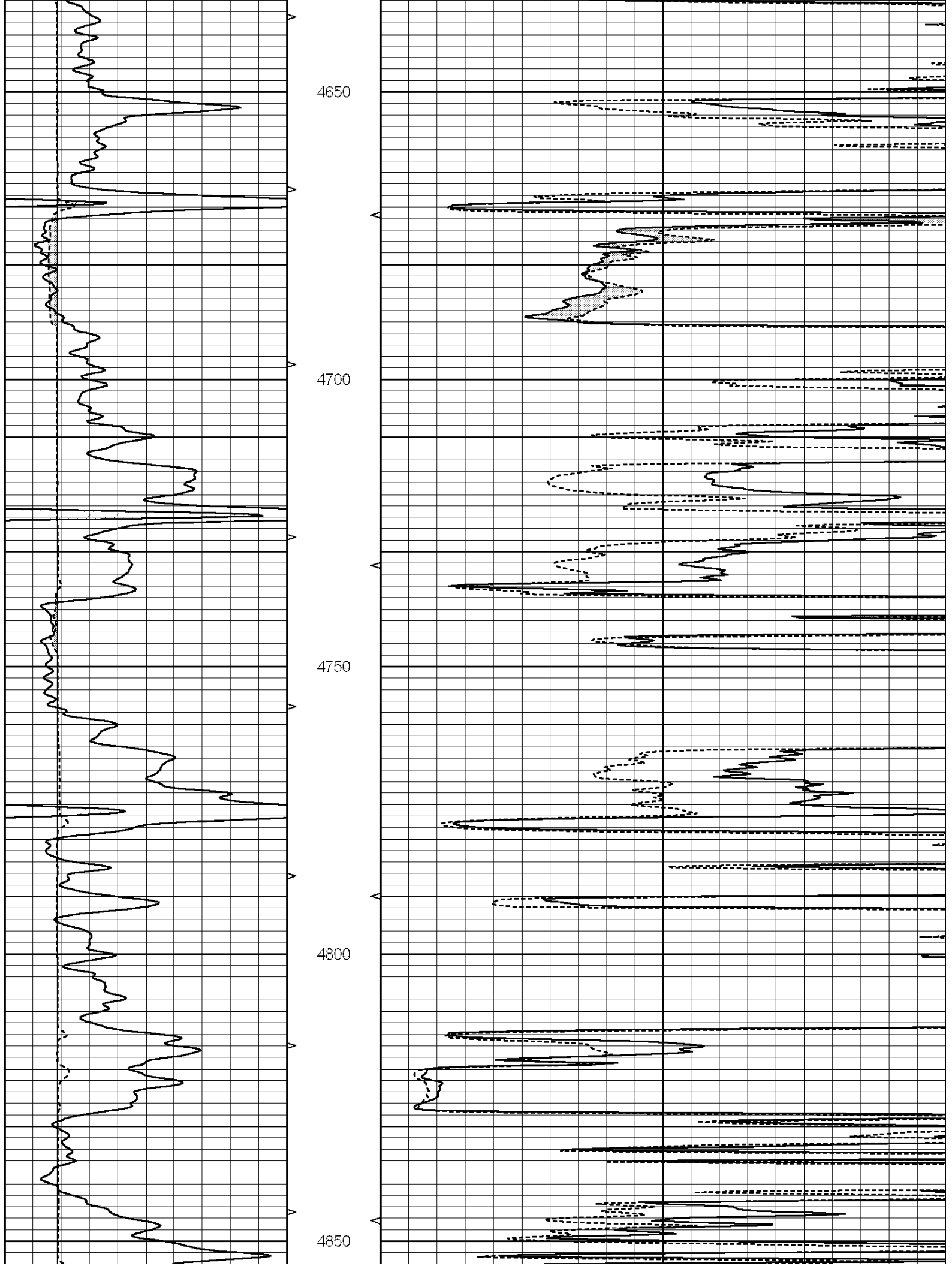
0	GAMMA RAY (GAPI)	150	ABHV	0	MEL1.5 (Ohm-m)	40
6	CALIPER (in)	16	10 (ft3)	0 0	MEL2.0 (Ohm-m)	40
			TBHV			
			0 (ft3)	10		

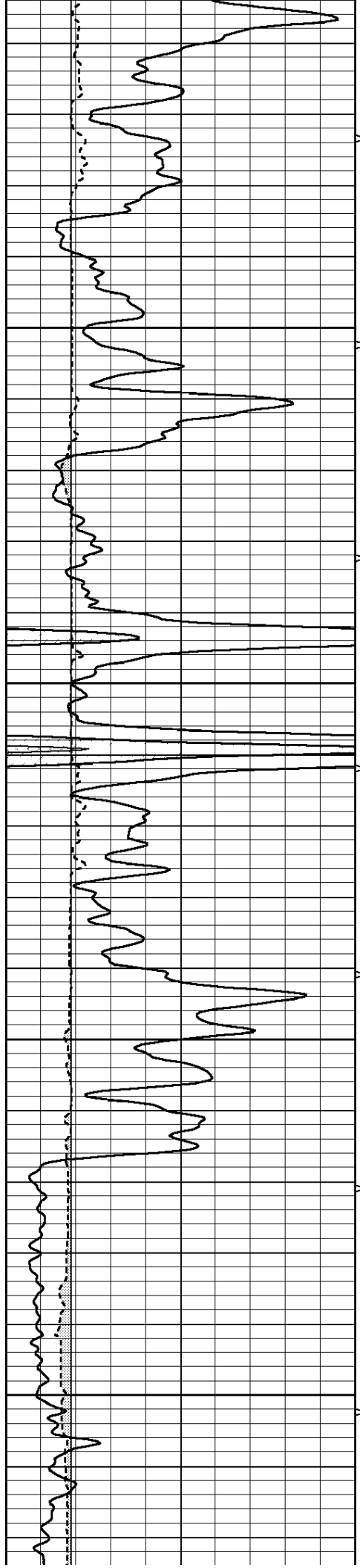










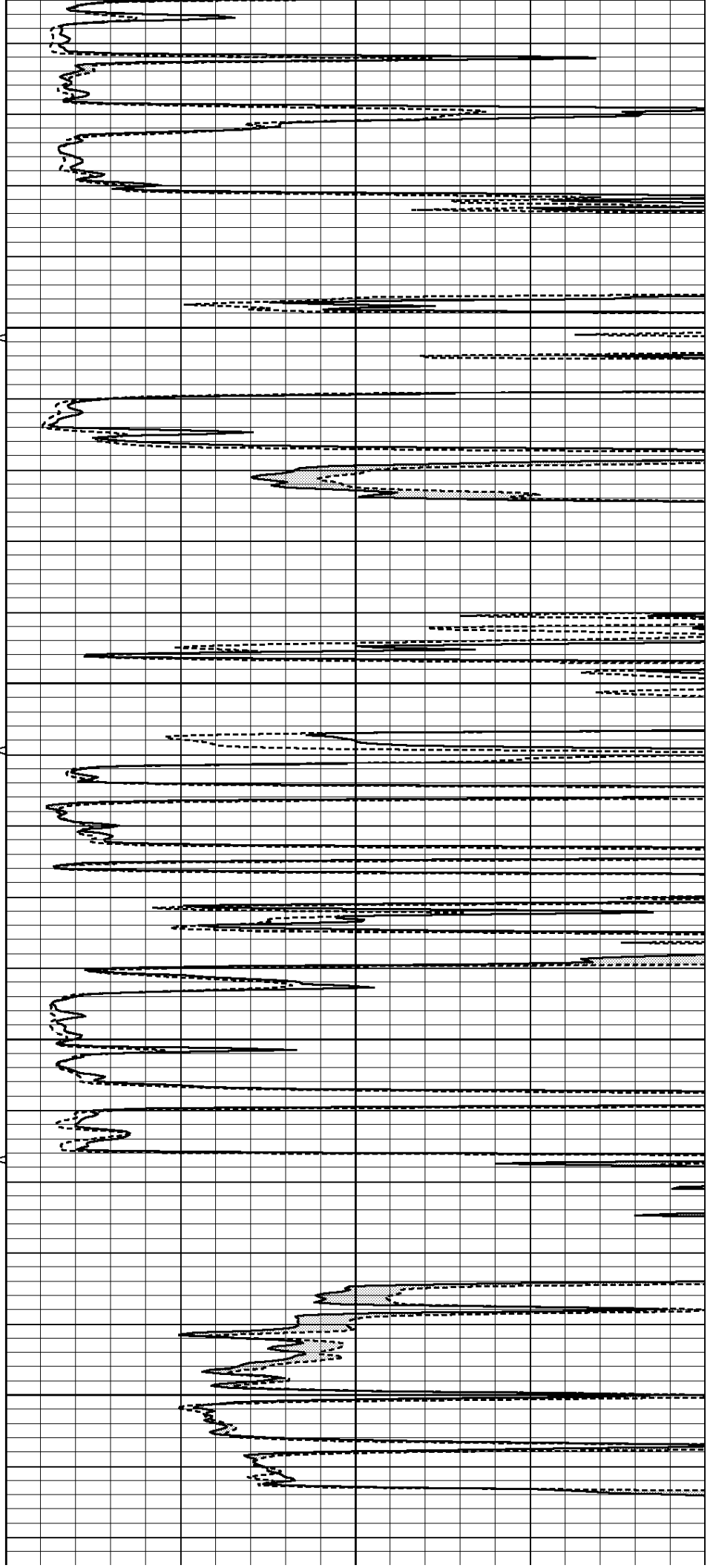


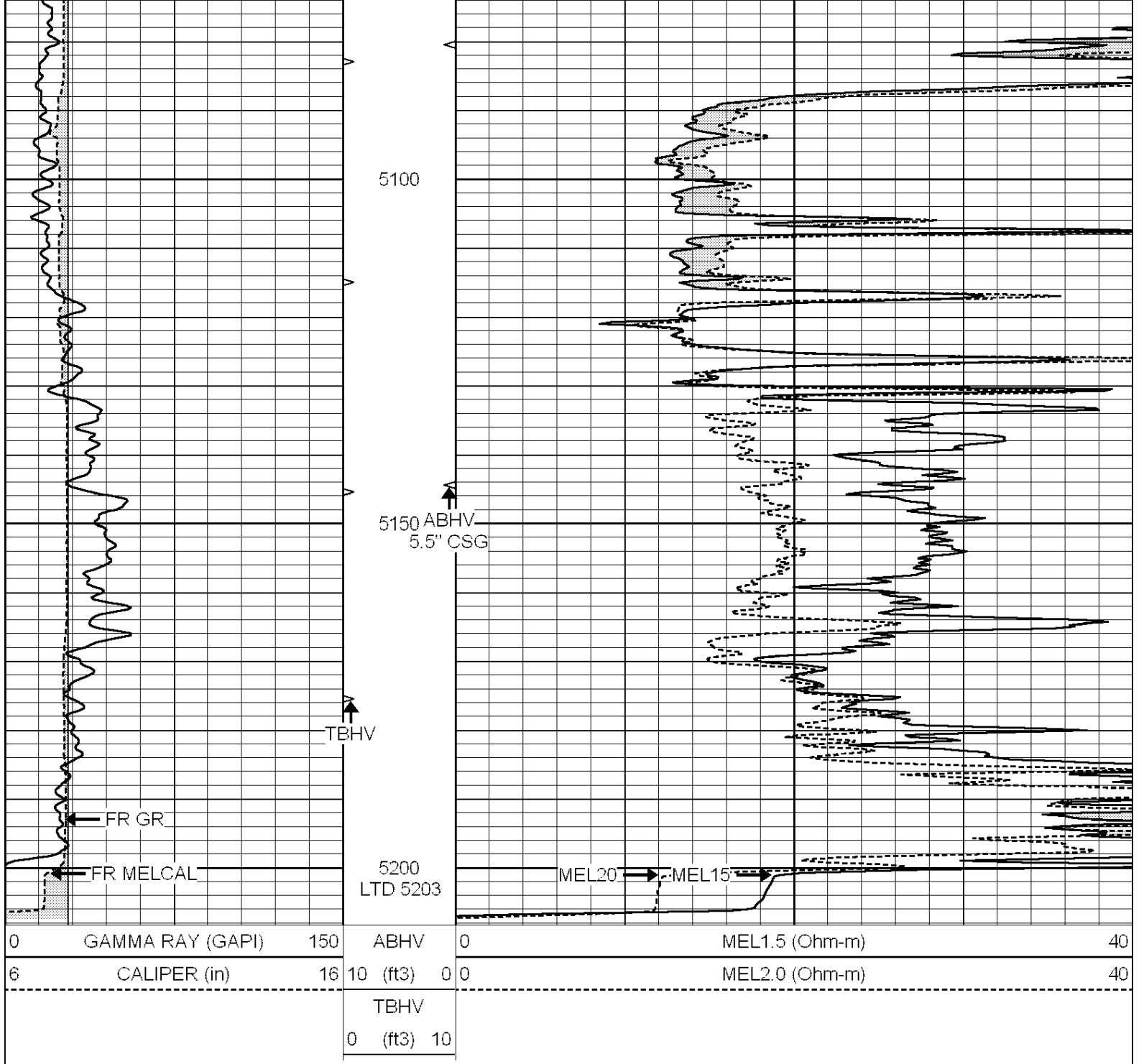
4900

4950

5000

5050



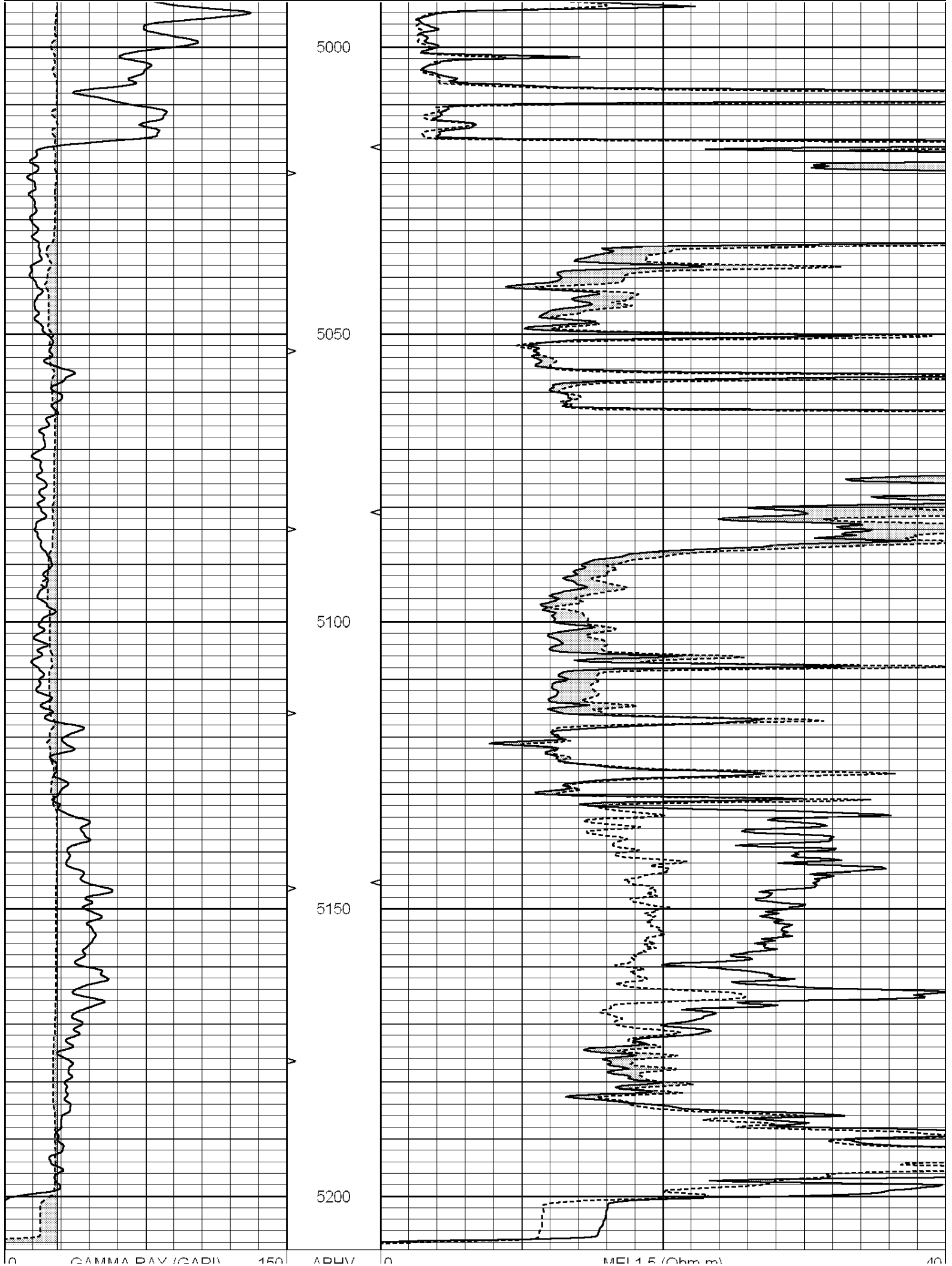


SUPERIOR
Hays,
Kansas

REPEAT SECTION

Database File: 006451ddn.db
 Dataset Pathname: pass5.1
 Presentation Format: _micro
 Dataset Creation: Sat Jan 22 20:48:05 2011 by Calc Open-Cased 090629
 Charted by: Depth in Feet scaled 1:240

0	GAMMA RAY (GAPI)	150	ABHV	0	MEL1.5 (Ohm-m)	40
6	CALIPER (in)	16	10 (ft3)	0 0	MEL2.0 (Ohm-m)	40
			TBHV			
			0 (ft3)	10		



6	CALIPER (in)	16	10 (ft3)	0	0	MEL2.0 (Ohm-m)	40
			TBHV				
			0 (ft3)	10			

Calibration Report

Database File: 006451ddn.db
 Dataset Pathname: pass6.1
 Dataset Creation: Sat Jan 22 21:16:58 2011 by Calc Open-Cased 090629

MICRO Calibration Report

Serial Number: MICRO6
 Tool Model: PROBE
 Performed: Wed Jan 19 06:40:00 2011

Caliper Calibration: Gain=5.211 Offset=1.360

	Low Cal	High Cal
References	8.000	14.000
Readings	1.178	2.330

1.5" Calibration: Gain=75.000 Offset=-1.600

	Low Cal	High Cal
References	0.000	20.000
Readings	0.008	1.200

2" Calibration: Gain=65.000 Offset=-0.700

	Low Cal	High Cal
References	0.000	20.000
Readings	0.008	0.888

Gamma Ray Calibration Report

Serial Number: GR6
 Tool Model: OPEN
 Performed: Wed Jul 14 14:14:30 2010

Calibrator Value: 150.0 GAPI

Background Reading:	0.0	cps
Calibrator Reading:	276.0	cps

Sensitivity: 0.8000 GAPI/cps