



SUPERIOR
Hays,
Kansas

**COMPENSATED
DENSITY/NEUTRON
LOG**

Company CASTELLI EXPLORATION, INC.
Well GREGG #7-19
Field SHIMER
County COMANCHE
State KANSAS

Company CASTELLI EXPLORATION, INC.
Well GREGG #7-19
Field SHIMER
County COMANCHE State KANSAS

Location: API # : 15-033-21578-0000
2310' FNL & 660' FEL
N2 - NE - NE
SEC 19 TWP 33S RGE 16W
Permanent Datum GROUND LEVEL Elevation 1825
Log Measured From KELLY BUSHING 13' A.G.L.
Drilling Measured From KELLY BUSHING
Other Services DIL/MEL
Elevation
K.B. 1838
D.F. 1836
G.L. 1825

Date	1/22/10
Run Number	ONE
Depth Driller	5200
Depth Logger	5203
Bottom Logged Interval	5179
Top Log Interval	3800
Casing Driller	13 3/8" @ 345
Casing Logger	342
Bit Size	7 7/8
Type Fluid in Hole	CHEMICAL MUD
Density / Viscosity	9.2/53
pH / Fluid Loss	10.5/8.8
Source of Sample	FLOWLINE
Rim @ Meas. Temp	1.0 @ 65F
Rmf @ Meas. Temp	.75 @ 65F
Rmc @ Meas. Temp	1.20 @ 65F
Source of Rmf / Rmc	MEASURED
Rim @ BHT	.51 @ 126F
Time Circulation Stopped	2 HOURS
Time Logger on Bottom	
Maximum Recorded Temperature	126F
Equipment Number	680
Location	HAYS, KS.
Recorded By	JASON CAPPELLUCCI
Witnessed By	RICK POPP

<<< Fold Here >>>

All interpretations are opinions based on inferences from electrical or other measurements and we cannot and do not guarantee the accuracy or correctness of any interpretation, and we shall not, except in the case of gross or willful negligence on our part, be liable or responsible for any loss, costs, damages, or expenses incurred or sustained by anyone resulting from any interpretation made by any of our officers, agents or employees. These interpretations are also subject to our general terms and conditions set out in our current Price Schedule.

Comments

THANK YOU FOR USING SUPERIOR WELL SERVICE (785) 628-6395
DIRECTIONS
COLDWATER, KS. - 9 E. TO MM 193 - 4 S. TO STOP SIGN - 2 E. TO CURVE
3 S. PAST 3 CATTLE GUARDS - ON WEST SIDE OF METAL BUILDING,
GO 2 MILES SOUTH INTO PAST 3 LOCATIONS

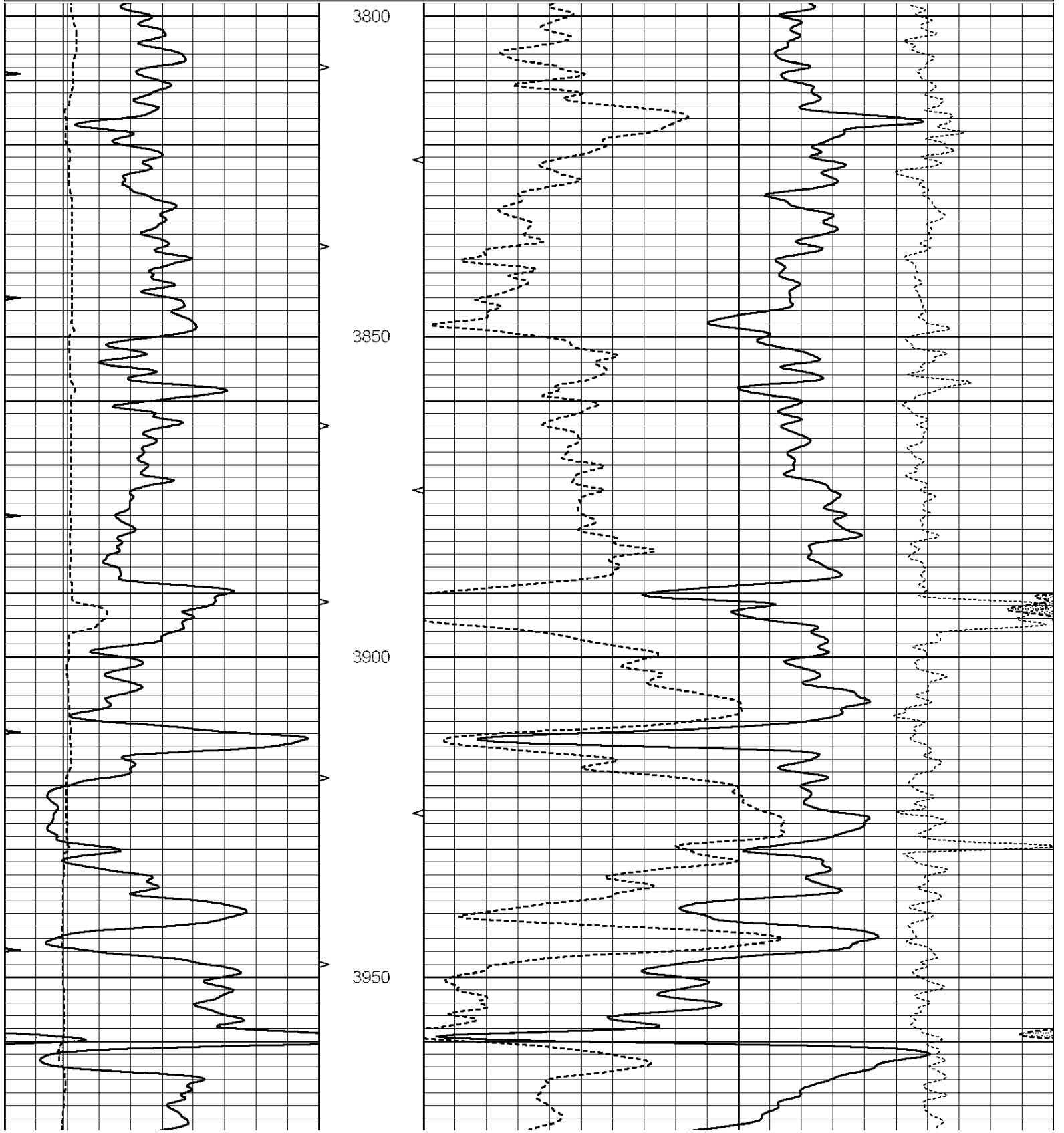


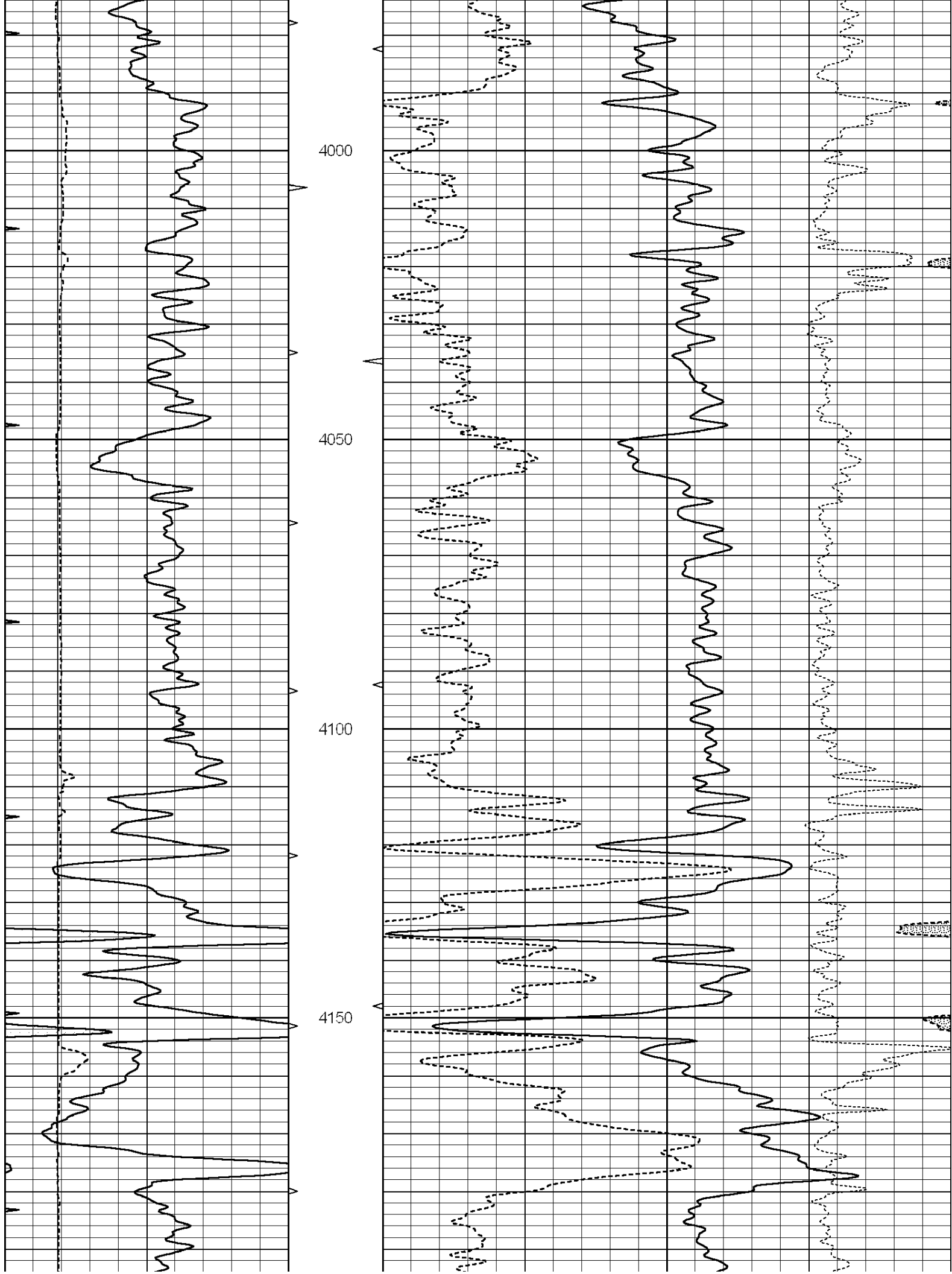
SUPERIOR
Hays,
Kansas

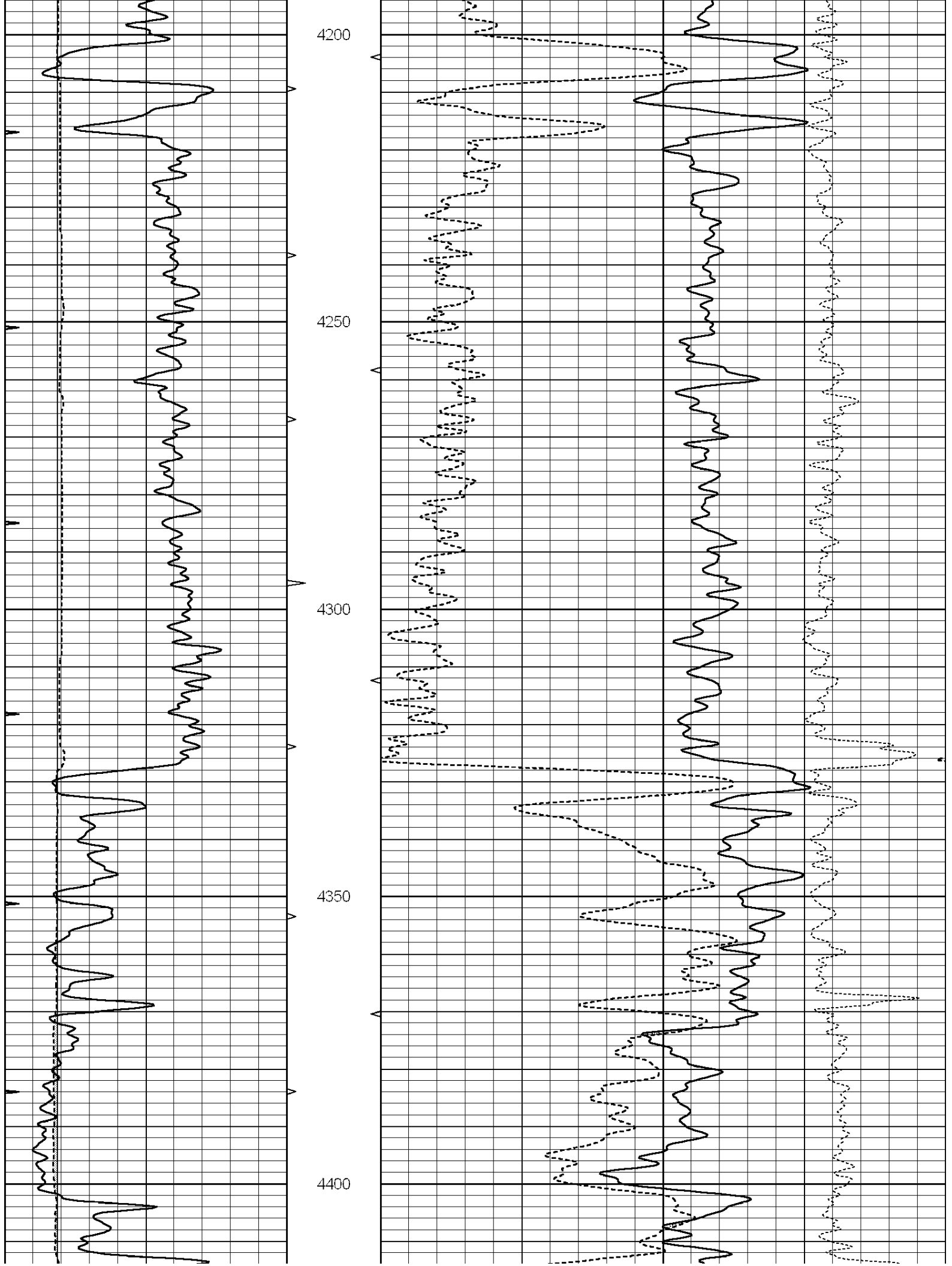
MAIN SECTION

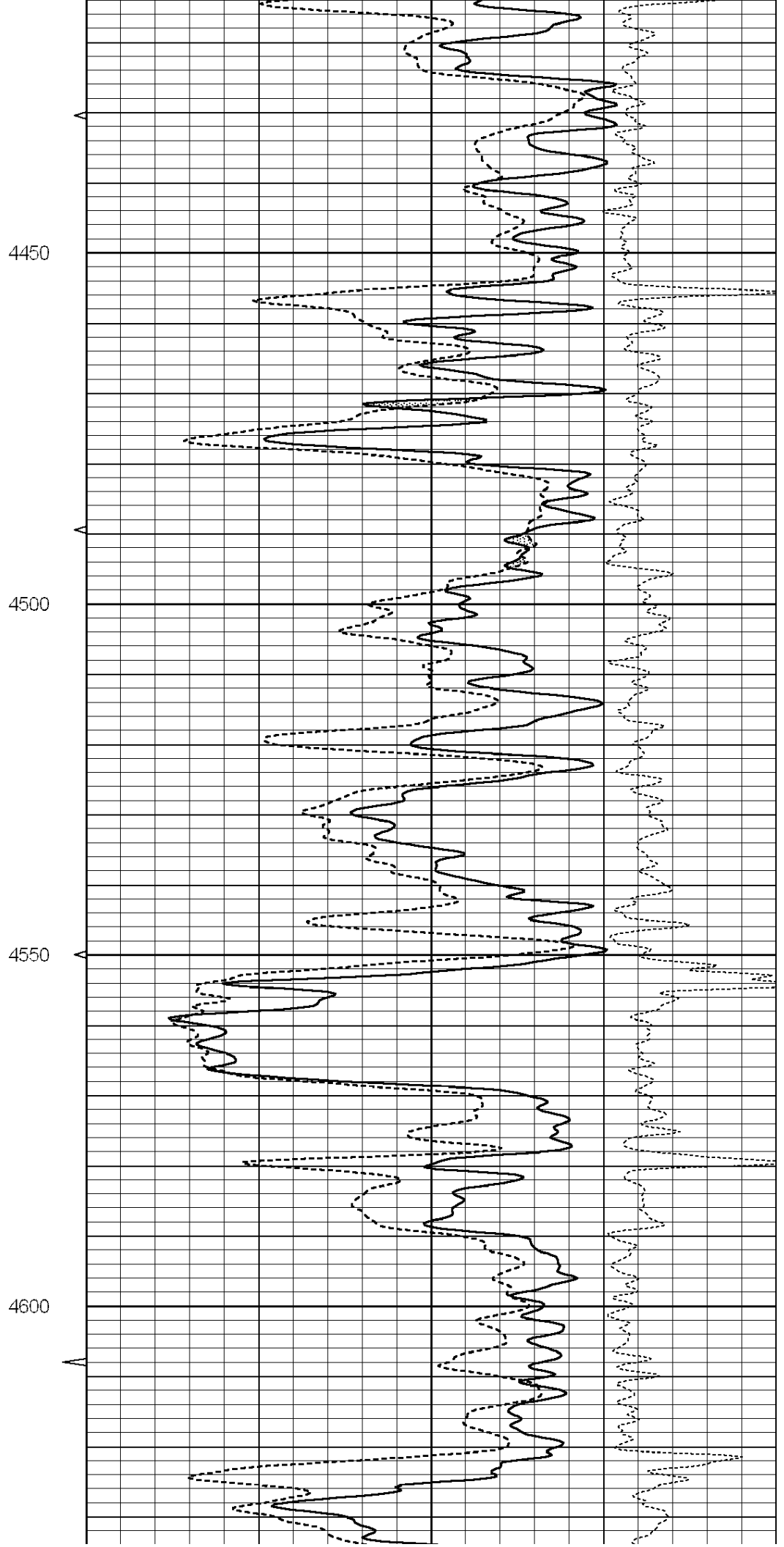
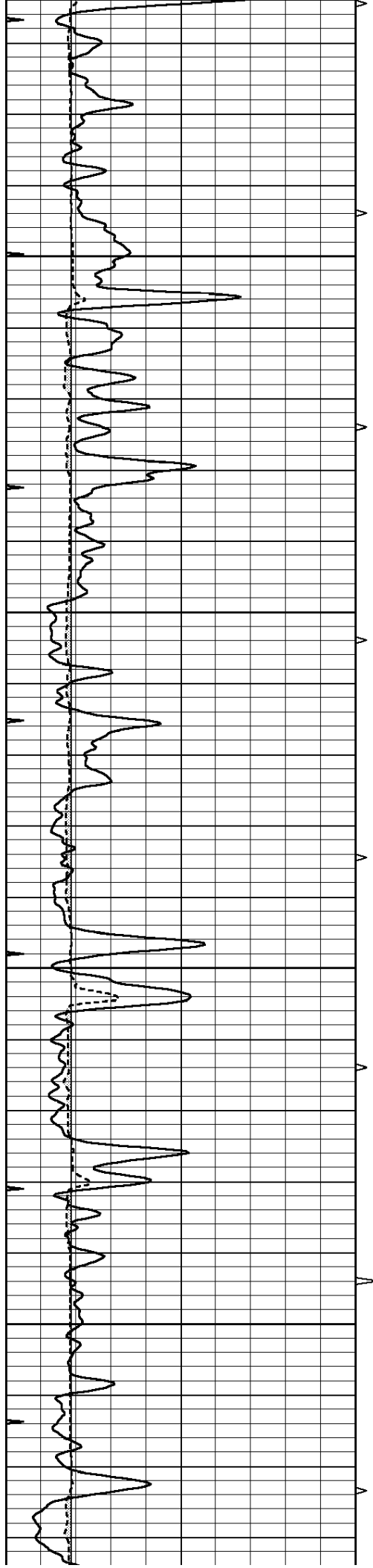
Database File: 006451ddn.db
 Dataset Pathname: pass3.1
 Presentation Format: _den_neu
 Dataset Creation: Sat Jan 22 19:04:42 2011 by Calc Open-Cased 090629
 Charted by: Depth in Feet scaled 1:240

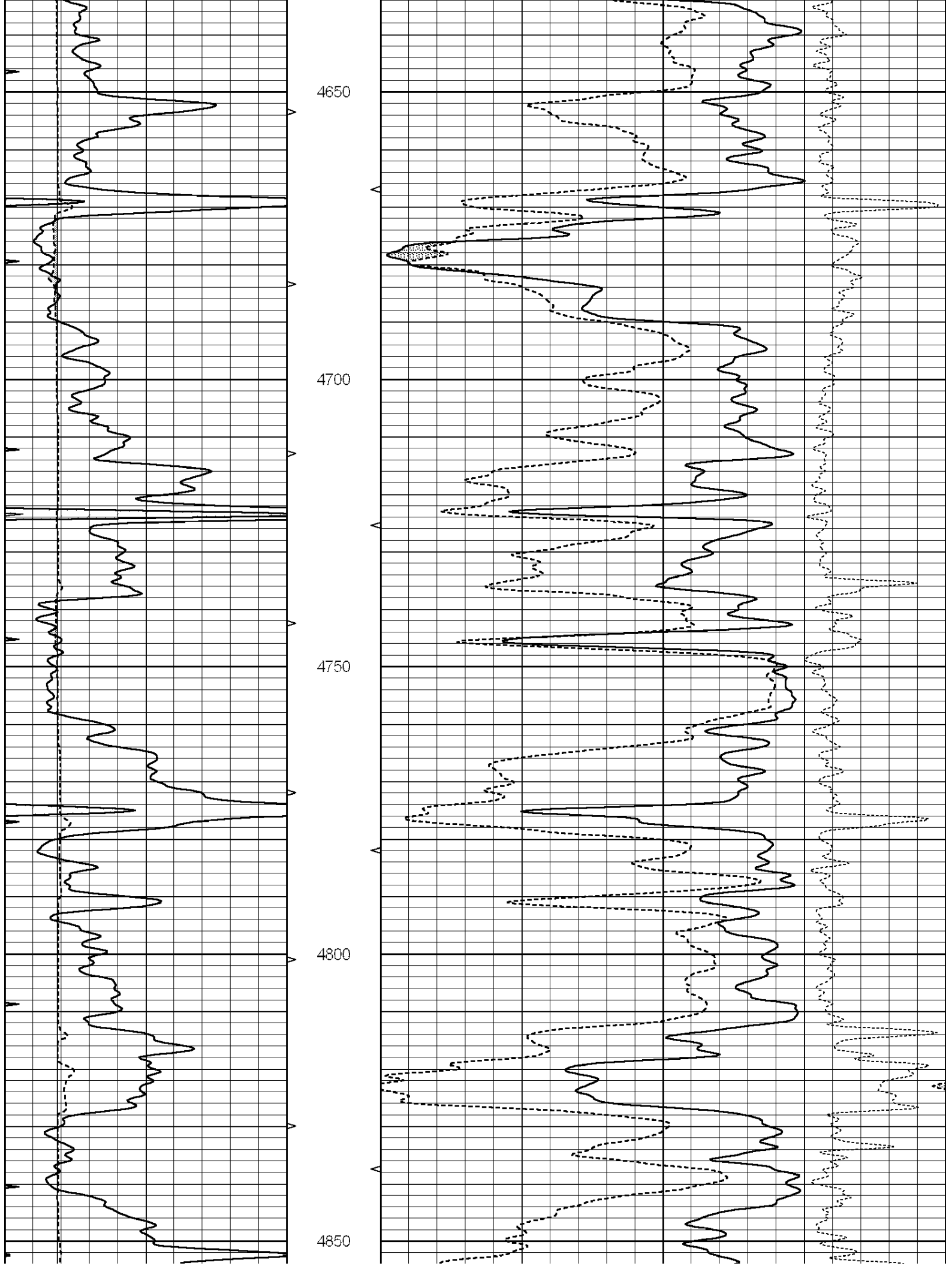
0	GAMMA RAY (GAPI)	150	AVTX	30	COMPENSATED DENSITY (pu)	-10
6	CALIPER (in)	16	10 (ft3)	0 30	COMPENSATED NEUTRON (pu)	-10
0	MINMK	20	BVTX		-0.25 CORRECTION (g/cc)	0.25
			0 (ft3)	10		

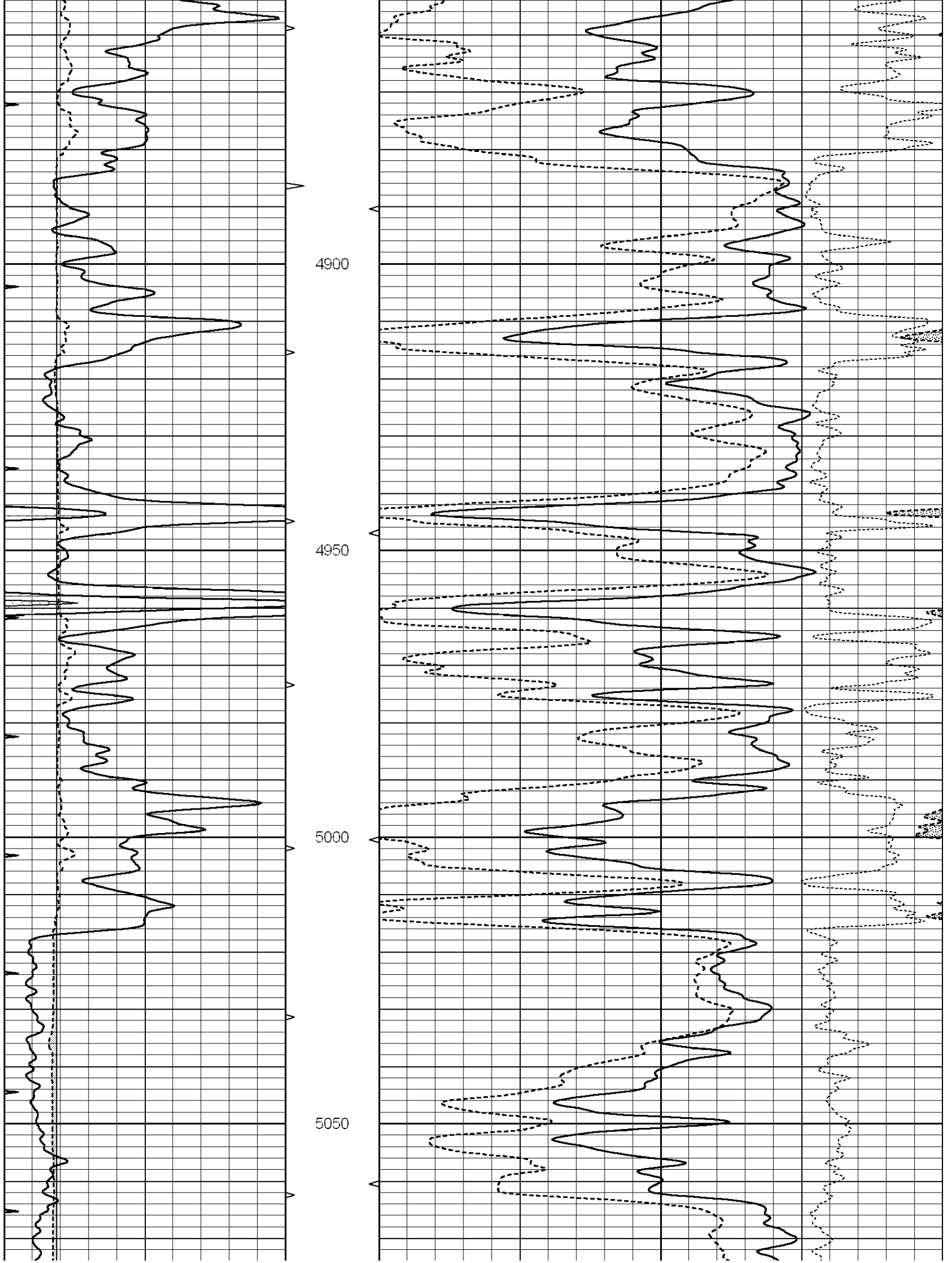


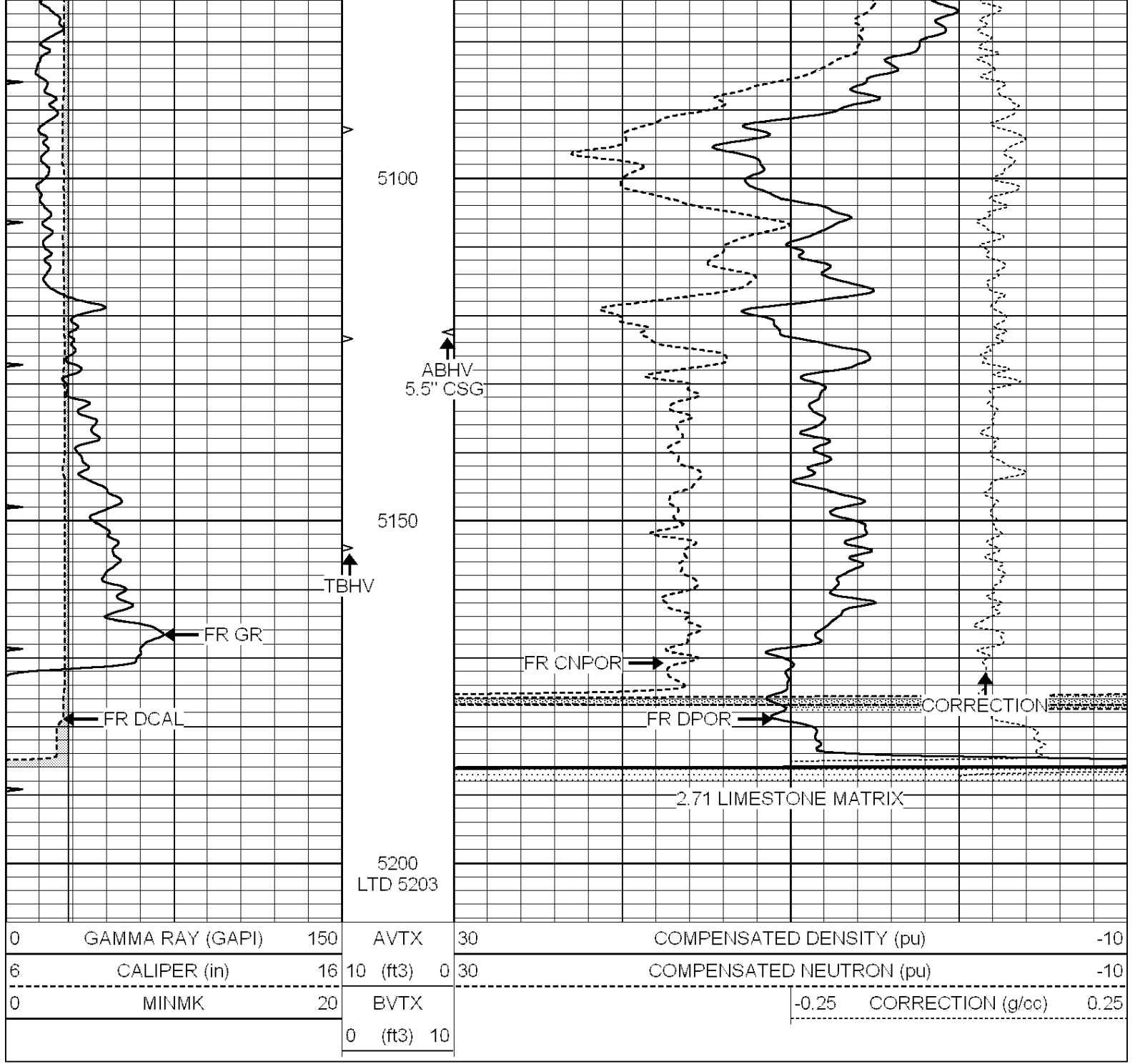










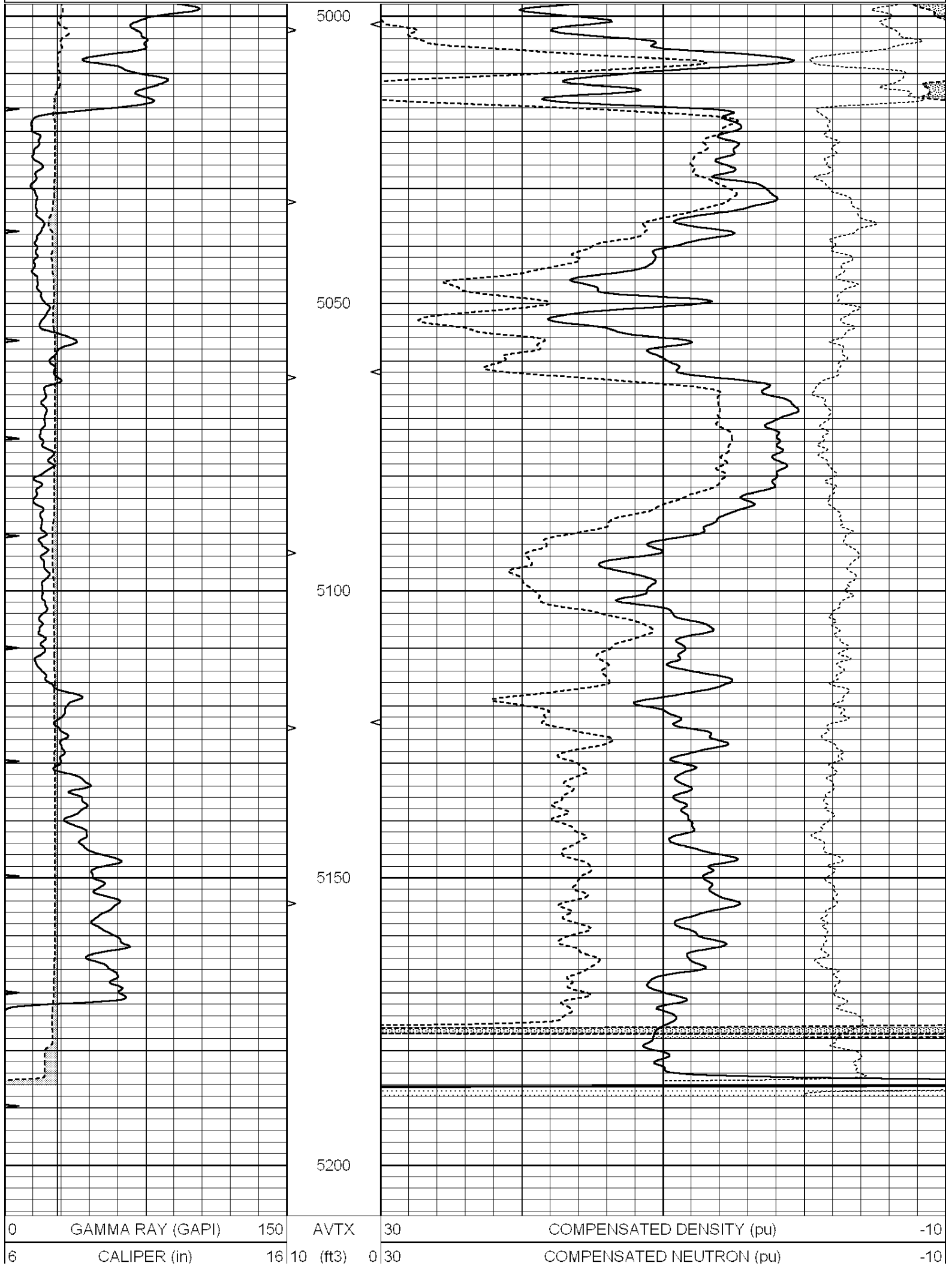


SUPERIOR
Hays,
Kansas

REPEAT SECTION

Database File: 006451ddn.db
 Dataset Pathname: pass2.1
 Presentation Format: _den_neu
 Dataset Creation: Sat Jan 22 18:44:00 2011 by Calc Open-Cased 090629
 Charted by: Depth in Feet scaled 1:240

0	GAMMA RAY (GAPI)	150	AVTX	30	COMPENSATED DENSITY (pu)	-10
6	CALIPER (in)	16	10 (ft3)	0 30	COMPENSATED NEUTRON (pu)	-10
0	MINMK	20	BVTX		-0.25 CORRECTION (g/cc)	0.25
			0 (ft3)	10		



0	MINMK	20	BVTX	-0.25	CORRECTION (g/cc)	0.25
			0 (ft3) 10			

Calibration Report

Database File: 006451ddn.db
 Dataset Pathname: pass2.1
 Dataset Creation: Sat Jan 22 18:44:00 2011 by Calc Open-Cased 090629

Dual Induction Calibration Report

Serial-Model: PROBE7-DILG
 Surface Cal Performed: Wed Jul 30 06:14:24 2008
 Downhole Cal Performed: Mon Jul 28 12:02:56 2008
 After Survey Verification Performed: Mon Jul 28 12:02:56 2008

Surface Calibration

Loop:	Readings			References			Results	
	Air	Loop		Air	Loop		m	b
Deep	-0.014	0.629	V	0.000	400.000	mmho/m	621.923	8.759
Medium	0.039	0.728	V	0.000	464.000	mmho/m	673.322	-26.058
Internal:	Zero	Cal		Zero	Cal		m	b
Deep	0.011	0.610	V	0.000	400.000	mmho/m	667.135	-7.256
Medium	0.005	0.712	V	0.000	464.000	mmho/m	655.677	-3.102

Downhole Calibration

	Readings			References			Results	
	Zero	Cal		Zero	Cal		m'	b'
Deep	0.000	0.000	mmho/m	14.508	388.384	mmho/m	1.000	0.000
Medium	0.000	0.000	mmho/m	166.367	504.400	mmho/m	1.000	0.000
LL3		7.500	V		1400.000	Ohm-m		
		0.000	V		20.000	Ohm-m		
		-7.200	V		4000.000	mmho-m		

After Survey Verification

	Readings			Targets			Results	
	Zero	Cal		Zero	Cal		m'	b'
Deep	0.000	0.000	mmho/m	0.000	0.000	mmho/m	0.000	0.000
Medium	0.000	0.000	mmho/m	0.000	0.000	mmho/m	0.000	0.000
LL3		1.000	Ohm-m		1.000	Ohm-m		
		0.000	Ohm-m		0.000	Ohm-m		
		1.000	mmho-m		1.000	mmho-m		

Compensated Density Calibration Report

Serial-Model: GEAR4-GEARHART
 Source / Verifier: 143 / 143
 Master Calibration Performed: Tue May 11 10:59:10 2010

Master Calibration

	Density		Far Detector	Near Detector	
Magnesium	1.710	g/cc	1015.91	497.51	cps
Aluminum	2.600	g/cc	227.67	350.20	cps

Spine Angle = 76.79

Density/Spine Ratio = 0.579

Size

Reading

Small Ring	8.00	in	2.50	V
Large Ring	14.00	in	4.70	V

Compensated Neutron Calibration Report

Serial Number: 5I
 Tool Model: G

CALIBRATION

Detector	Readings	Target	Normalization
Short Space	1.00 cps	1.00 cps	1.0000
Long Space	1.00 cps	1.00 cps	1.0000

Gamma Ray Calibration Report

Serial Number: GR6
 Tool Model: OPEN
 Performed: Wed Jul 14 14:14:30 2010

Calibrator Value: 150.0 GAPI

Background Reading: 0.0 cps
 Calibrator Reading: 276.0 cps

Sensitivity: 0.8000 GAPI/cps