



**SUPERIOR
Hays,
Kansas**

**COMPENSATED
DENSITY / NEUTRON
LOG**

Company OIL PRODUCERS, INC.
Well VOSBURGH #1-2
Field HEARN
County STAFFORD
State KANSAS

Company OIL PRODUCERS, INC. OF KANSAS
Well VOSBURGH #1-2
Field HEARN
County STAFFORD State KANSAS

Location: API # :

SEC 2 TWP 24S RGE 15W

Permanent Datum GROUD LEVEL Elevation 2001
Log Measured From KELLY BUSHING 5' A.G.L.
Drilling Measured From KELLY BUSHING

Other Services
DIL
SONIC/MEL

Elevation

K.B. 2006
D.F.
G.L. 2001

Date	12-22-10
Run Number	ONE
Depth Driller	4230
Depth Logger	4230
Bottom Logged Interval	4206
Top Log Interval	3400
Casing Driller	268
Casing Logger	268
Bit Size	7.875
Type Fluid in Hole	CHEMICAL MUD
Density / Viscosity	9.2 / 49
pH / Fluid Loss	9.5 / 14.8
Source of Sample	FLOWLINE
Rim @ Meas. Temp	0.85 @ 70F
Rimf @ Meas. Temp	0.64 @ 70F
Rimc @ Meas. Temp	1.02 @ 70F
Source of Rimf / Rimc	MEASURED
Rim @ BHT	.510 @ 117F
Time Circulation Stopped	2 HOURS
Time Logger on Bottom	5:30 A.M.
Maximum Recorded Temperature	117F
Equipment Number	860
Location	HAYS, KS.
Recorded By	RUPP
Witnessed By	DEREK PATTERSON

<<< Fold Here >>>

All interpretations are opinions based on inferences from electrical or other measurements and we cannot and do not guarantee the accuracy or correctness of any interpretation, and we shall not, except in the case of gross or willful negligence on our part, be liable or responsible for any loss, costs, damages, or expenses incurred or sustained by anyone resulting from any interpretation made by any of our officers, agents or employees. These interpretations are also subject to our general terms and conditions set out in our current Price Schedule.

Comments

SUPERIOR WELL SERVICES
785-628-6395
THANK YOU FOR YOUR BUSINESS
DIRECTIONS: jCT #281 & #50, 7W, 2N, 3W, 1/2W, S INTO.



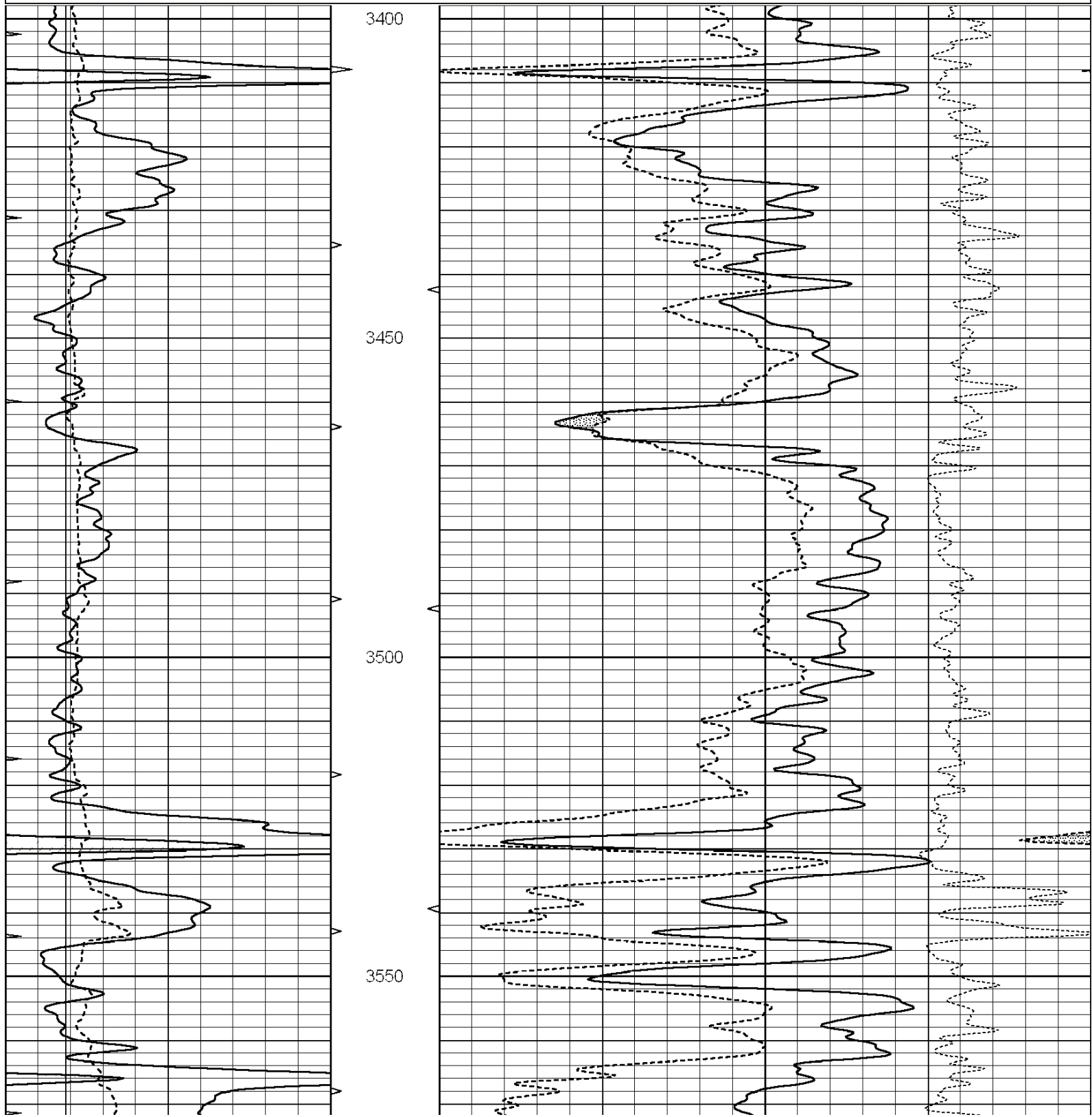
**SUPERIOR
Hays,
Kansas**

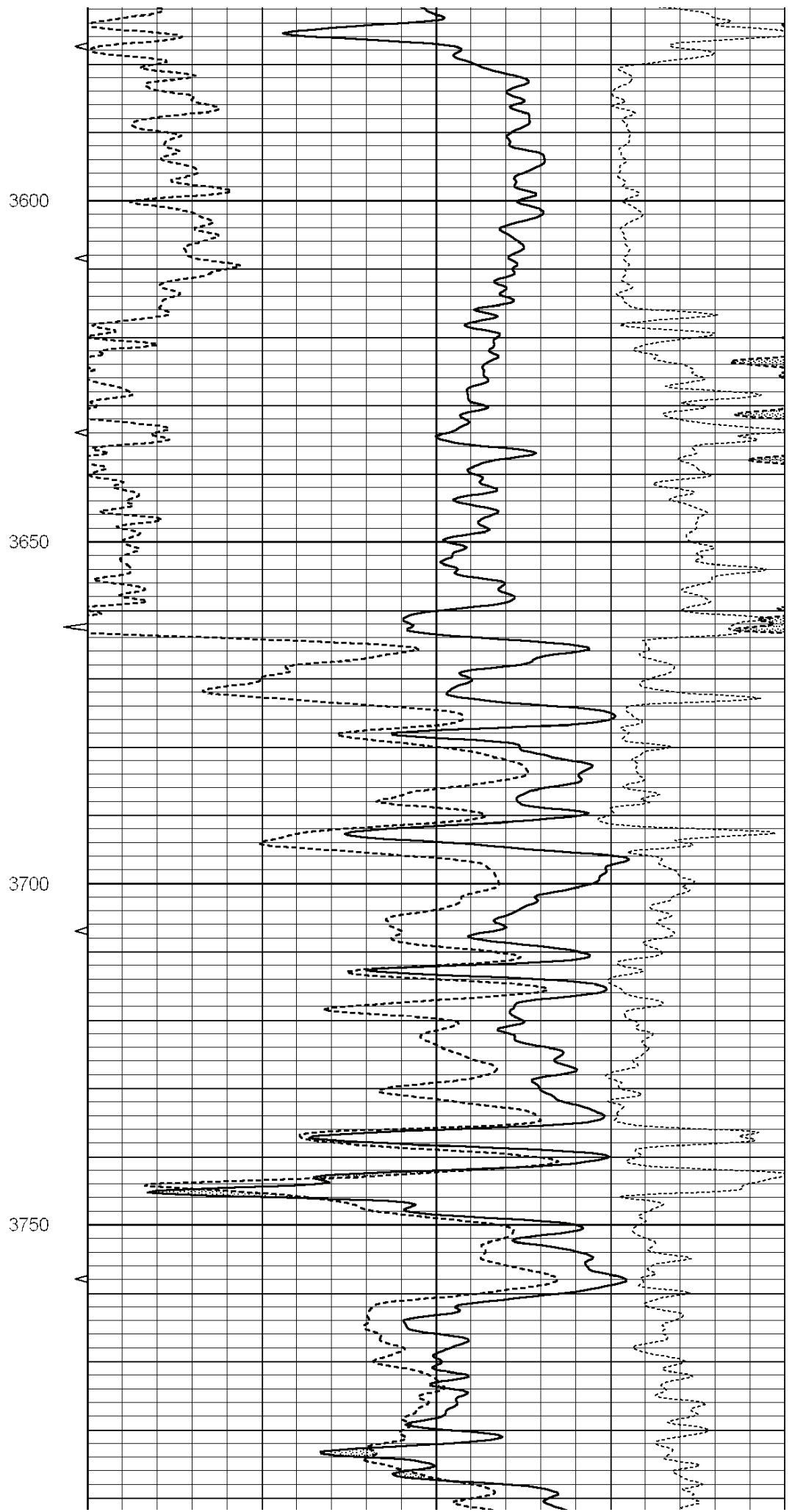
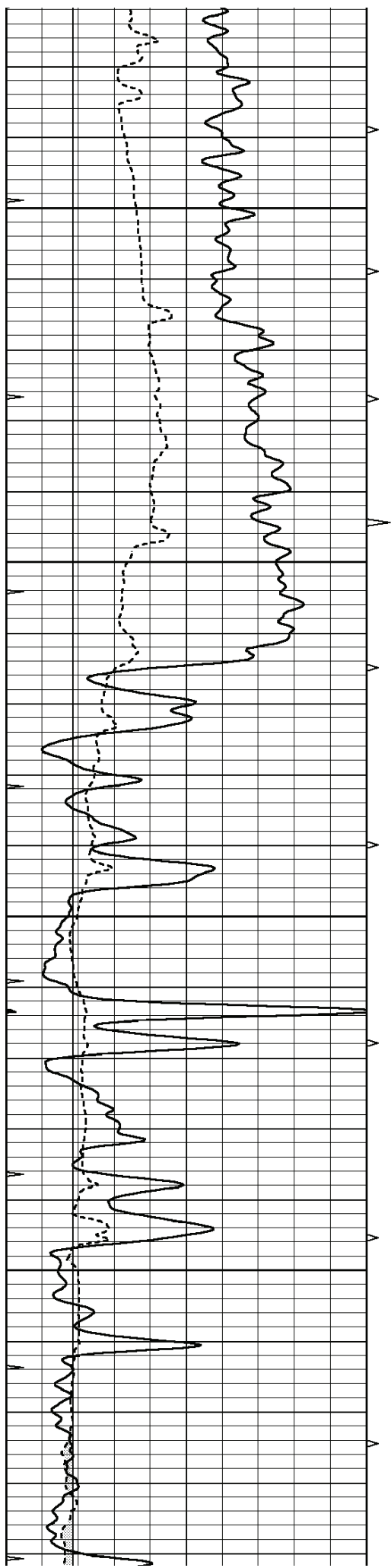
MAIN SECTION

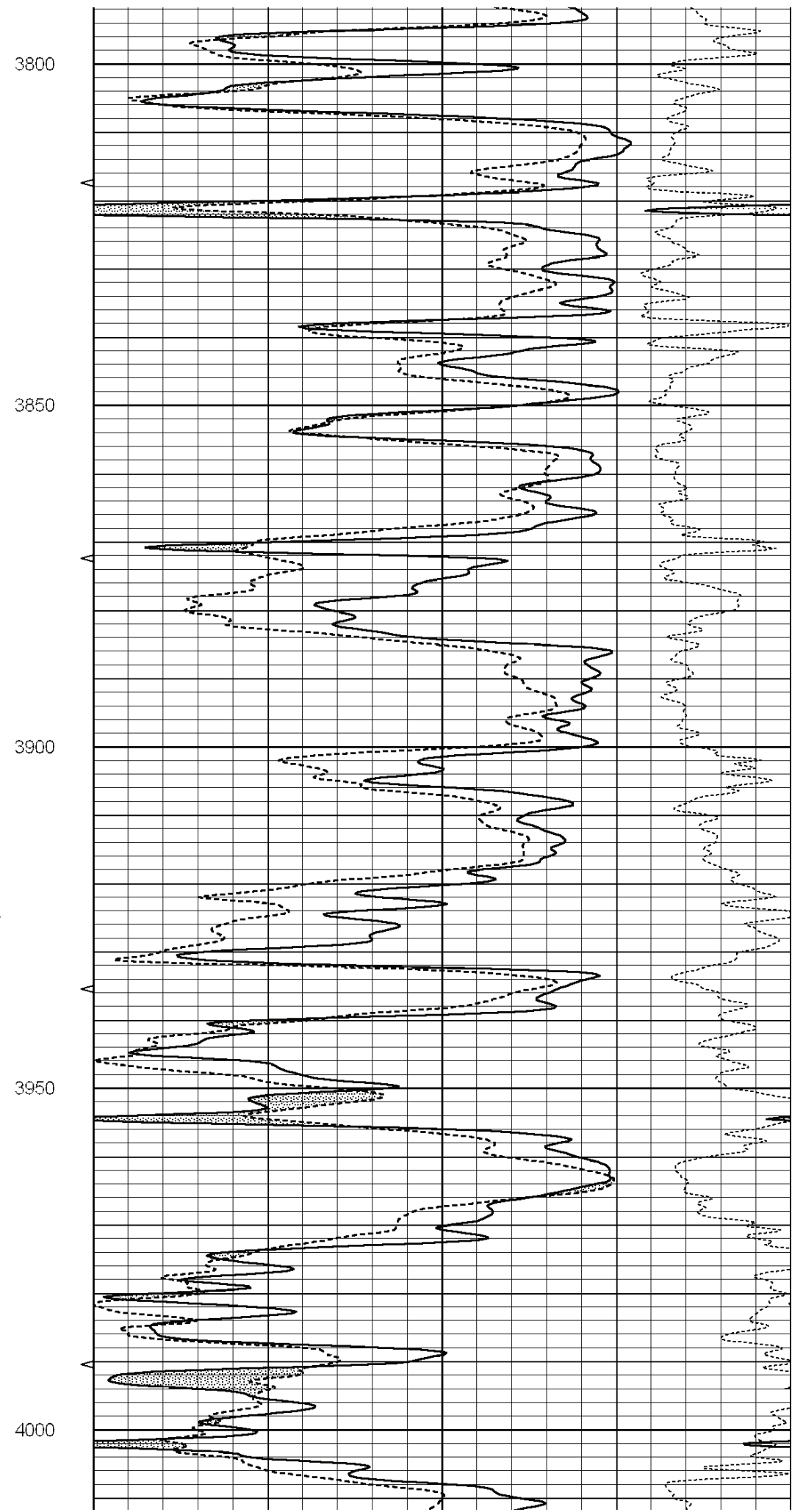
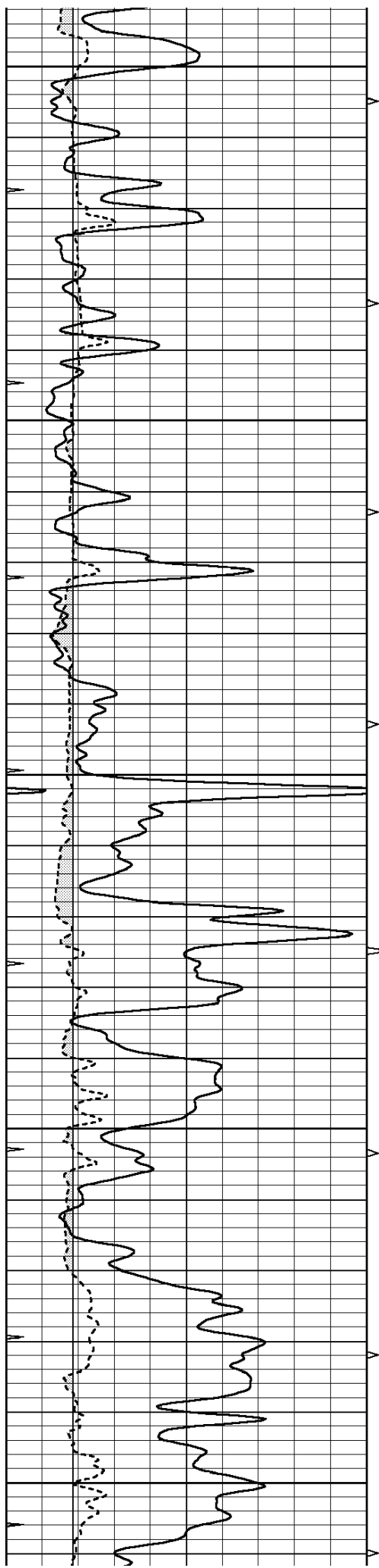


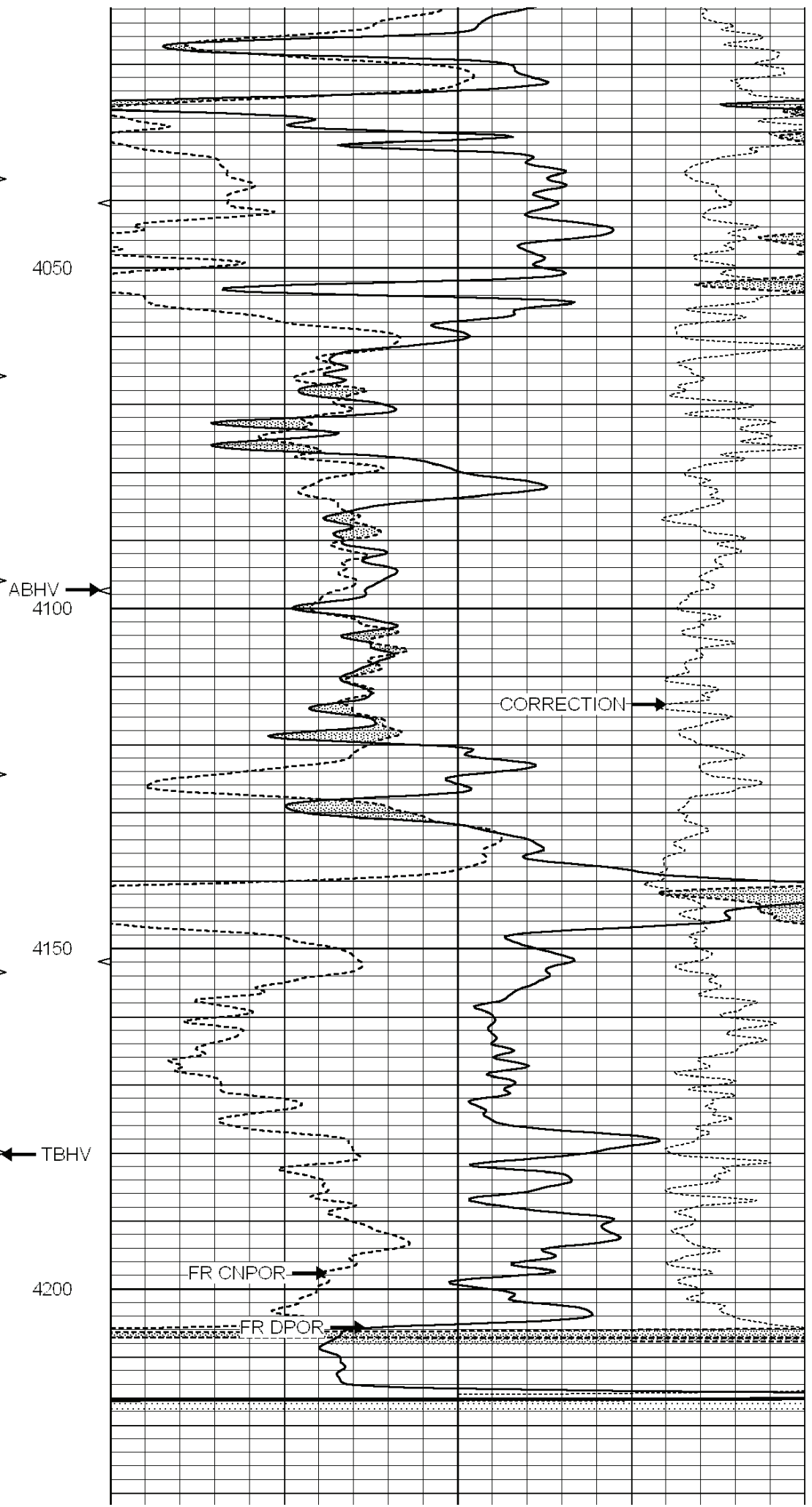
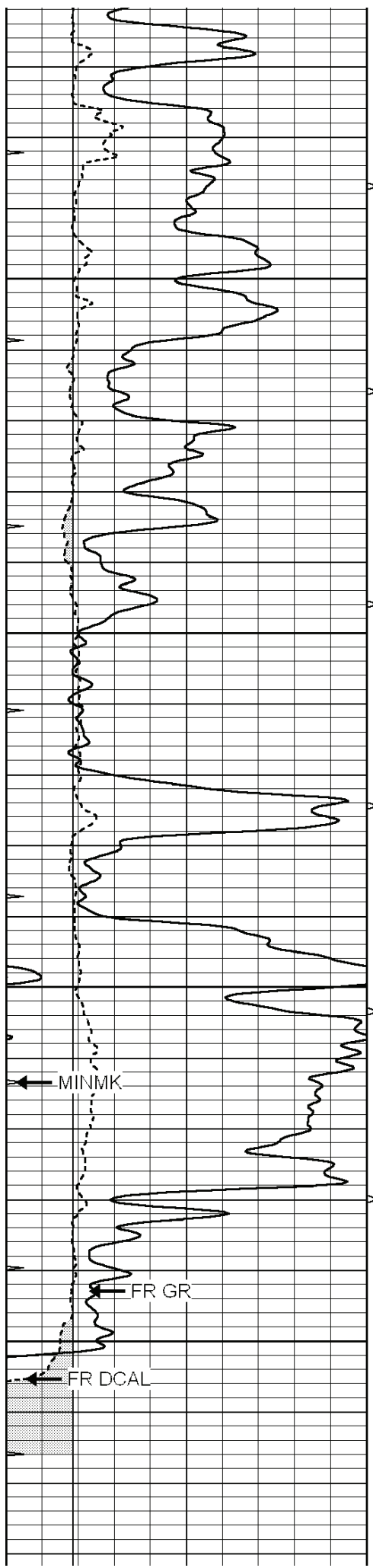
Database File: 006315ddn.db
 Dataset Pathname: pass2.A
 Presentation Format: den_neu
 Dataset Creation: Wed Dec 22 08:25:37 2010
 Charted by: Depth in Feet scaled 1:240

0	GAMMA RAY (GAPI)	150	ABHV	30	COMPENSATED DENSITY (pu)	-10
6	CALIPER (in)	16	10 (ft3)	0 30	COMPENSATED NEUTRON (pu)	-10
0	MINMK	20	TBHV		-0.25 CORRECTION (g/cc)	0.25
			0 (ft3)	10		









0	GAMMA RAY (GAPI)	150	ABHV	30	COMPENSATED DENSITY (pu)				-10
6	CALIPER (in)	16	10 (ft3) 0	30	COMPENSATED NEUTRON (pu)				-10
0	MINMK	20	TBHV		-0.25	CORRECTION (g/cc)		0.25	
			0 (ft3) 10						

Calibration Report

Database File: 006315ddn.db
 Dataset Pathname: pass2.A
 Dataset Creation: Wed Dec 22 08:25:37 2010

Dual Induction Calibration Report

Serial-Model: DIL5-GEAR
 Performed: Wed Dec 22 06:48:39 2010

Loop:	Readings			References			Results	
	Air	Loop		Air	Loop		m	b
Deep	0.004	0.654	V	0.000	400.000	mmho/m	530.000	-10.000
Medium	-0.005	0.737	V	0.000	462.500	mmho/m	520.000	-11.000
Internal:	Zero	Cal		Zero	Cal		m	b
Deep	0.006	0.655	V	0.000	400.000	mmho/m	615.668	-3.483
Medium	0.010	0.747	V	0.000	462.500	mmho/m	627.607	-6.064

Compensated Density Calibration Report

Serial-Model: GEAR1-GEARHART
 Source / Verifier: 147 / 147
 Master Calibration Performed: Wed Dec 22 06:48:09 2010

Master Calibration

	Density		Far Detector	Near Detector	
Magnesium	1.710	g/cc	1243.76	629.14	cps
Aluminum	2.600	g/cc	282.16	435.01	cps
Spine Angle = 76.03			Density/Spine Ratio = 0.582		
	Size		Reading		
Small Ring	8.00	in	3.82	V	
Large Ring	14.00	in	6.37	V	

Compensated Neutron Calibration Report

Serial Number: NEU_11
 Tool Model: G

CALIBRATION

Detector	Readings		Target		Normalization
Short Space	1.00	cps	1.00	cps	1.0000
Long Space	1.00	cps	1.00	cps	1.0000

Gamma Ray Calibration Report

Serial Number: GR5
 Tool Model: OPEN
 Performed: Wed Dec 22 06:47:21 2010

Calibrator Value:	1.0	GAPI
Background Reading:	0.0	cps
Calibrator Reading:	1.0	cps
Sensitivity:	0.6200	GAPI/cps