



SUPERIOR
Hays,
Kansas

SONIC
LOG

Company OIL PRODUCERS, INC.
Well VOSBURGH #1-2
Field HEARN
County STAFFORD
State KANSAS

Company OIL PRODUCERS, INC. OF KANSAS
Well VOSBURGH #1-2
Field HEARN
County STAFFORD State KANSAS

Location: API #:

SEC 2 TWP 24S RGE 15W

Permanent Datum GROUD LEVEL Elevation 2001
Log Measured From KELLY BUSHING 5' A.G.L.
Drilling Measured From KELLY BUSHING

Other Services
CDL/CNL
MEL/DIL

Elevation

K.B. 2006
D.F.
G.L. 2001

Date	12-22-10
Run Number	TWO
Depth Driller	4230
Depth Logger	4230
Bottom Logged Interval	4223
Top Log Interval	250
Casing Driller	268
Casing Logger	268
Bit Size	7.875
Type Fluid in Hole	CHEMICAL MUD
Density / Viscosity	9.2 / 49
pH / Fluid Loss	9.5 / 14.8
Source of Sample	FLOWLINE
Rim @ Meas. Temp	0.85 @ 70F
Rimf @ Meas. Temp	0.64 @ 70F
Rimc @ Meas. Temp	1.02 @ 70F
Source of Rimf / Rimc	MEASURED
Rim @ BHT	.510 @ 117F
Time Circulation Stopped	2 HOURS
Time Logger on Bottom	5:30 A.M.
Maximum Recorded Temperature	117F
Equipment Number	860
Location	HAYS, KS.
Recorded By	RUPP
Witnessed By	DEREK PATTERSON

<<< Fold Here >>>

All interpretations are opinions based on inferences from electrical or other measurements and we cannot and do not guarantee the accuracy or correctness of any interpretation, and we shall not, except in the case of gross or willful negligence on our part, be liable or responsible for any loss, costs, damages, or expenses incurred or sustained by anyone resulting from any interpretation made by any of our officers, agents or employees. These interpretations are also subject to our general terms and conditions set out in our current Price Schedule.

Comments

SUPERIOR WELL SERVICES
785-628-6395
THANK YOU FOR YOUR BUSINESS
DIRECTIONS: jCT #281 & #50, 7W, 2N, 3W, 1/2W, S INTO.



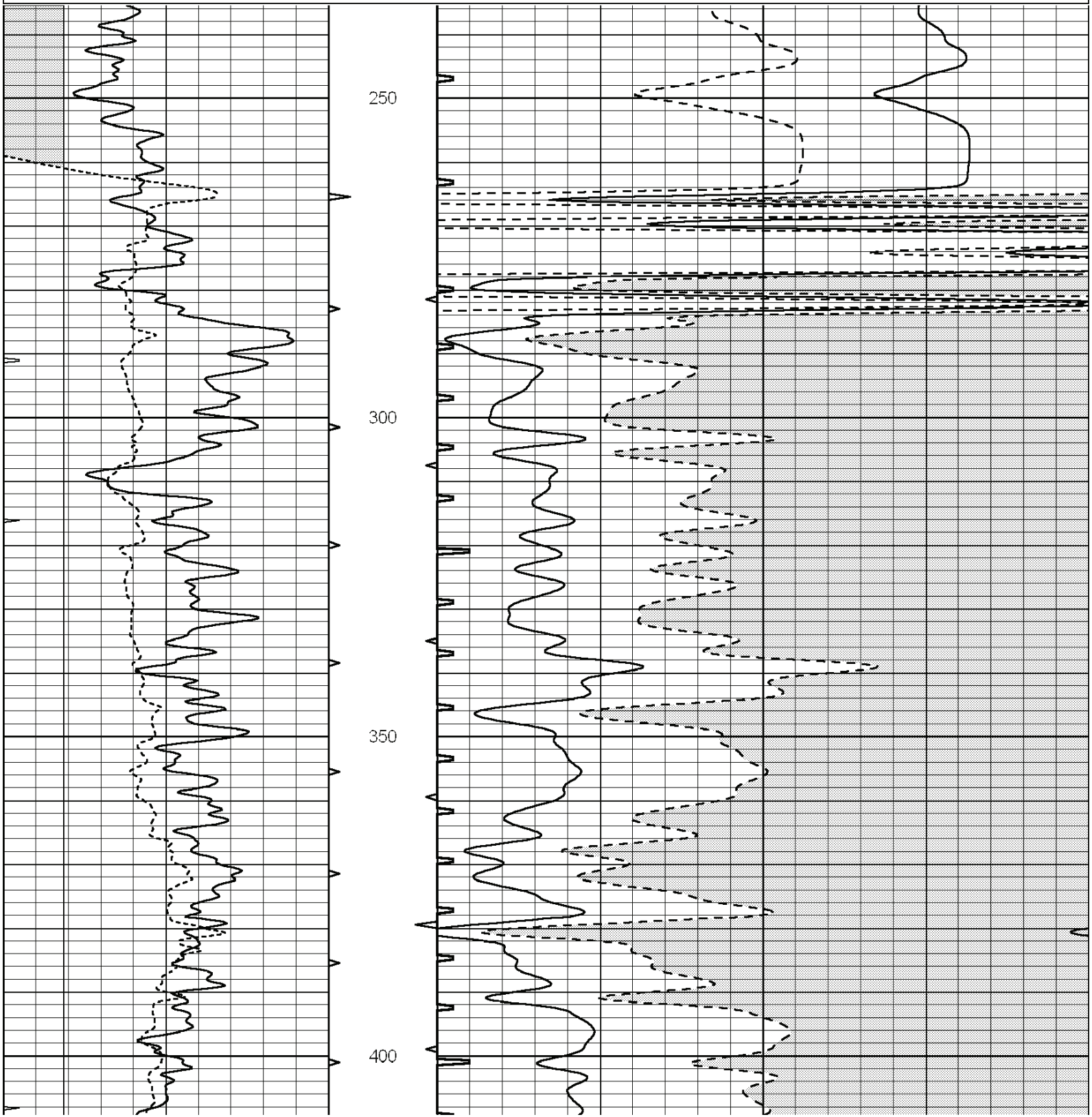
SUPERIOR
Hays,
Kansas

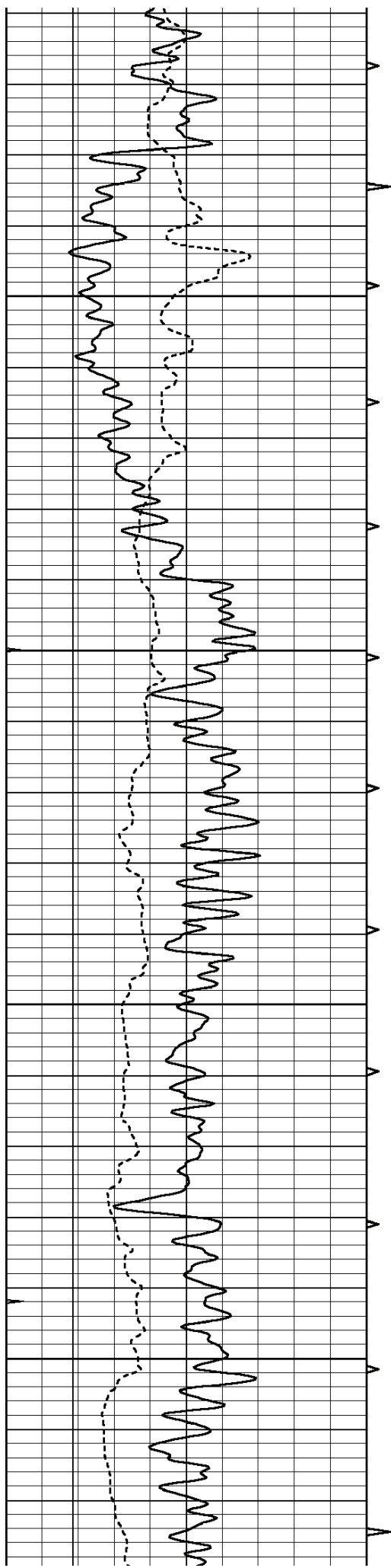
MAIN SECTION



Database File: 006315ddn.db
Dataset Pathname: pass3.A
Presentation Format: slt
Dataset Creation: Wed Dec 22 10:57:55 2010
Charted by: Depth in Feet scaled 1:240

0	GAMMA RAY (GAPI)	150	ABHV	140	DELTA TIME (usec/ft)	40
6	CALIPER (in)	16	10 (ft3)	0 30	SONIC POROSITY (pu)	-10
0	MINMK	20	TBHV	0	ITT (msec)	20
			0 (ft3)	10		



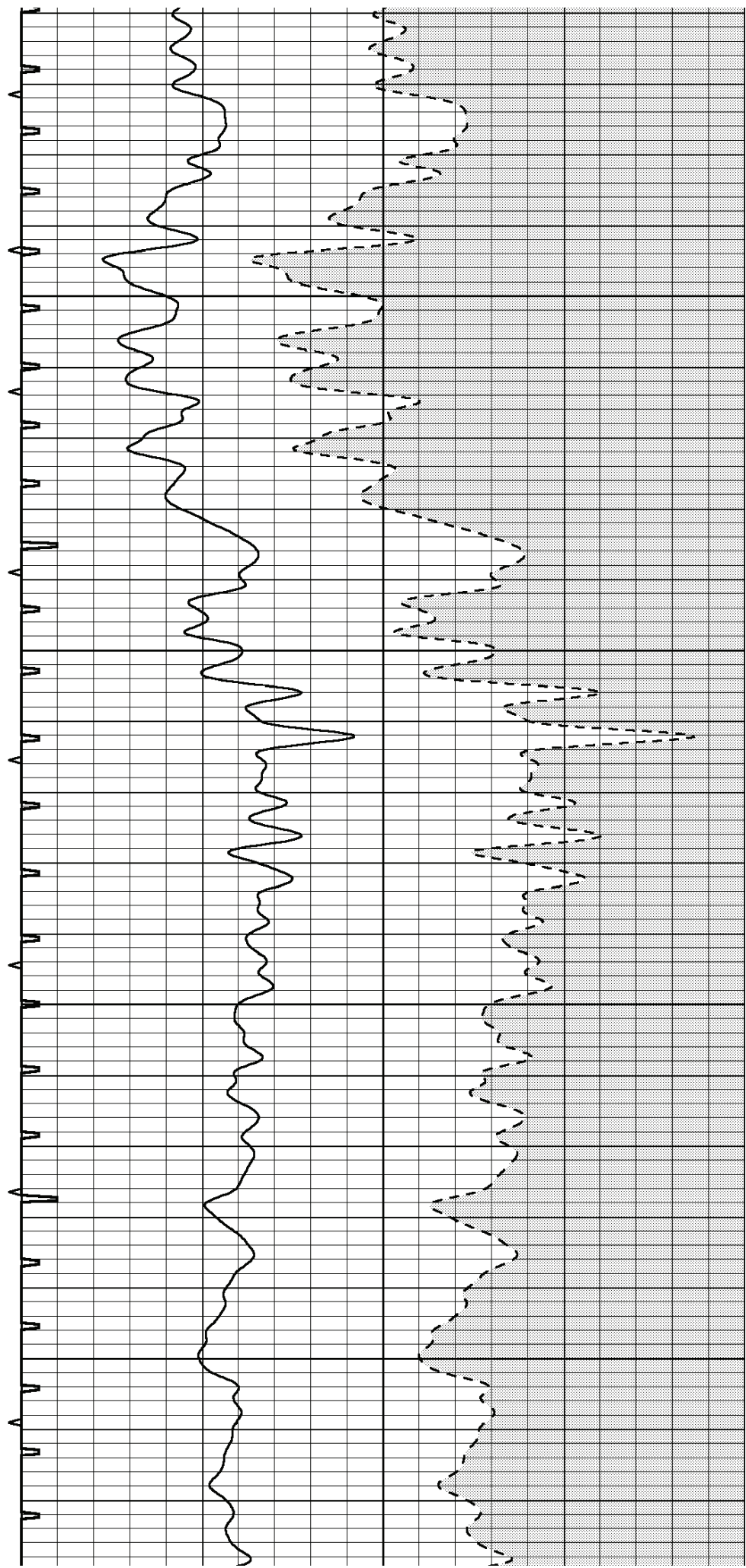


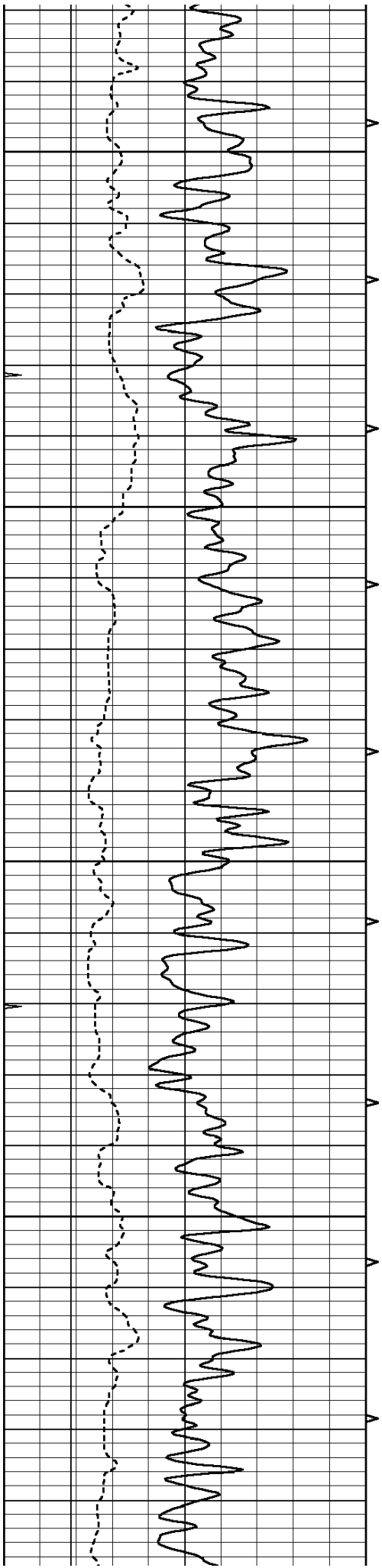
450

500

550

600



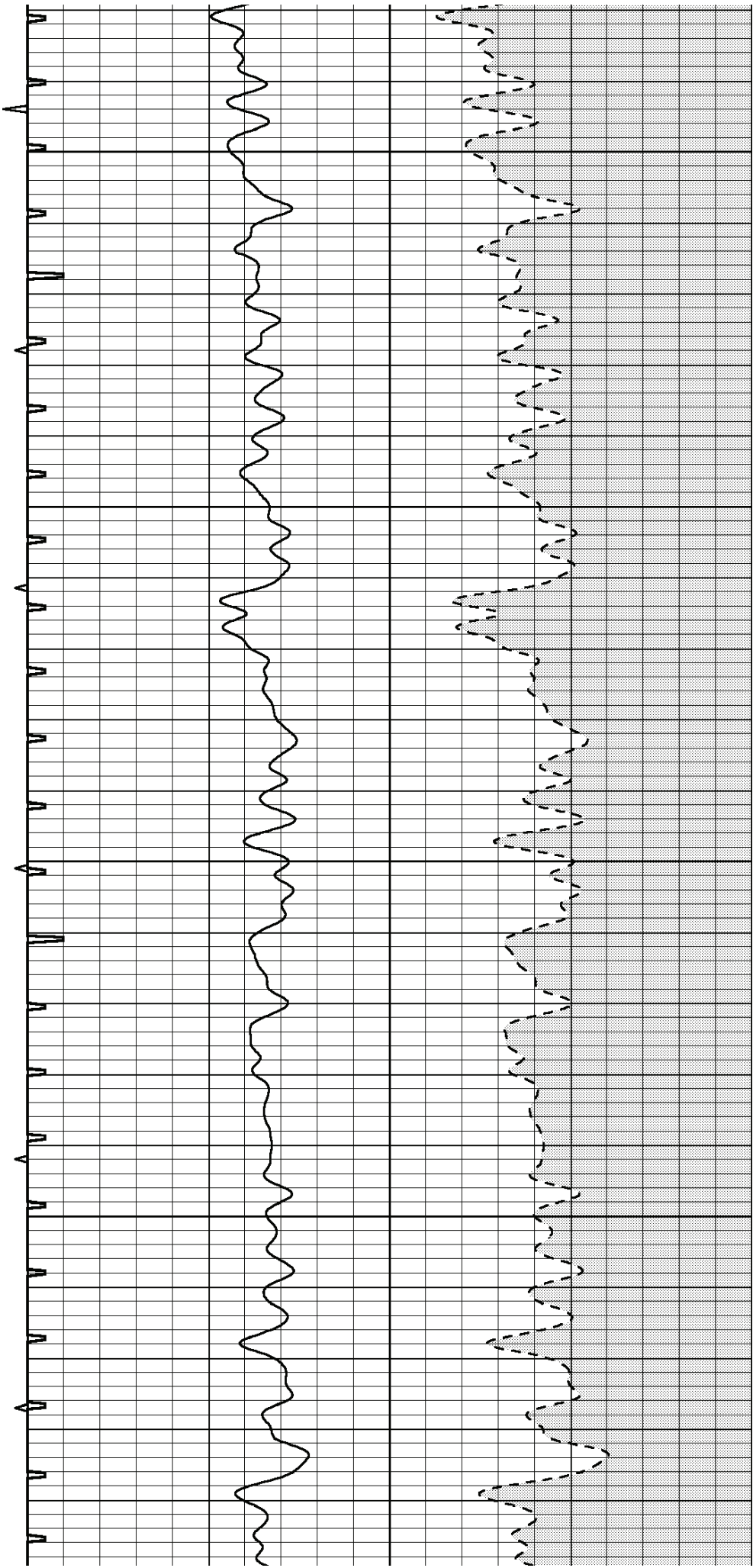


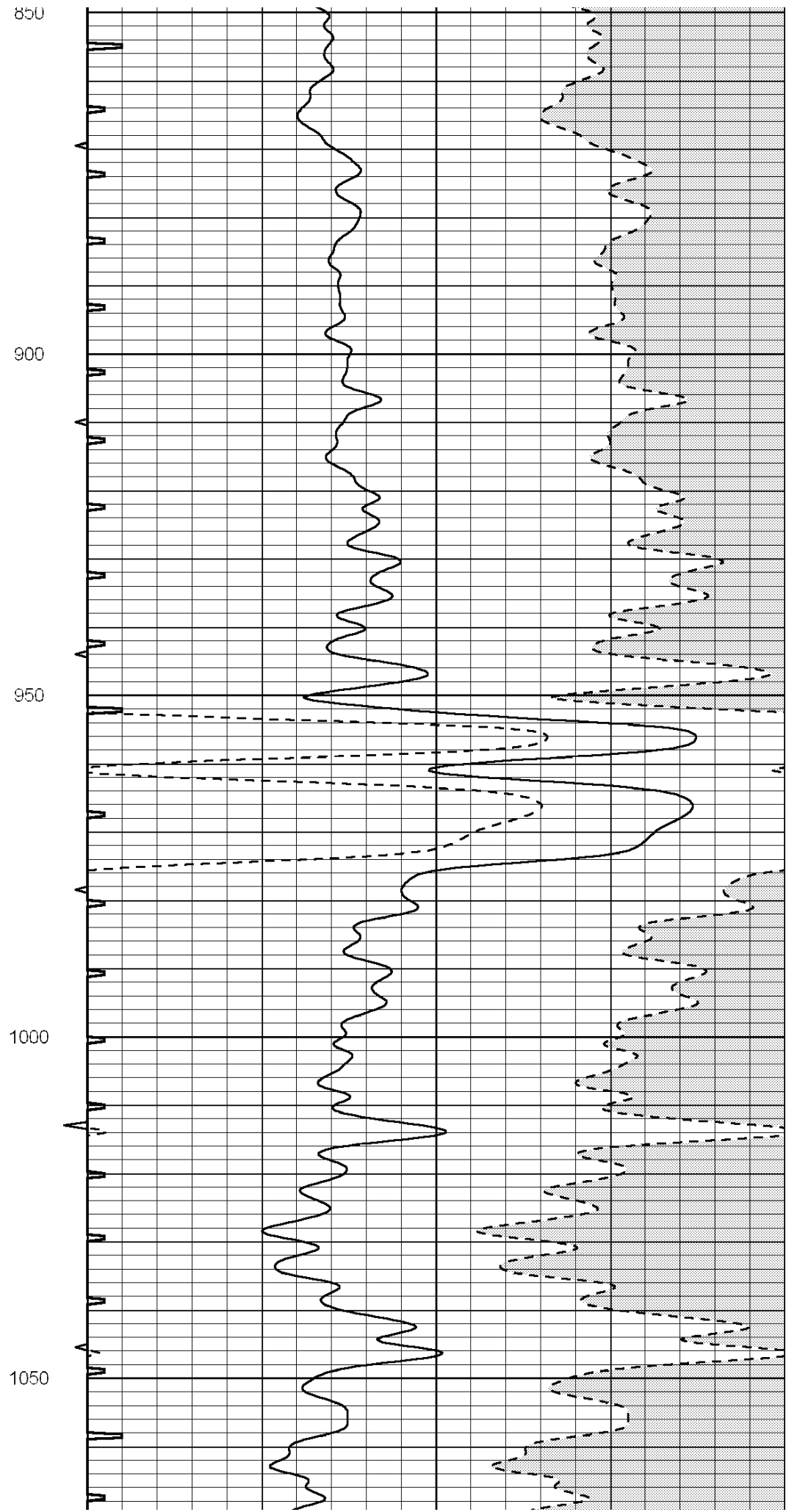
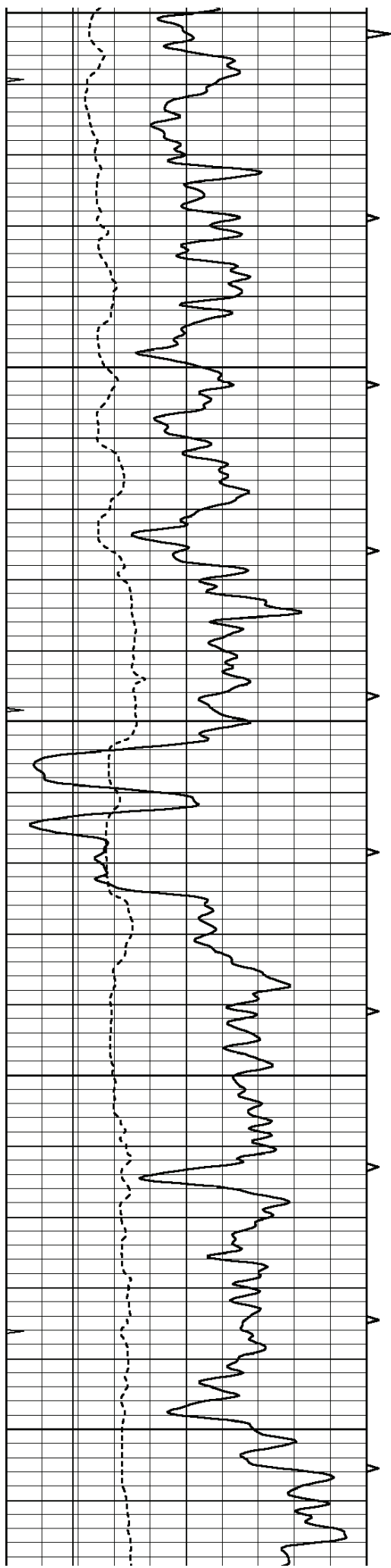
650

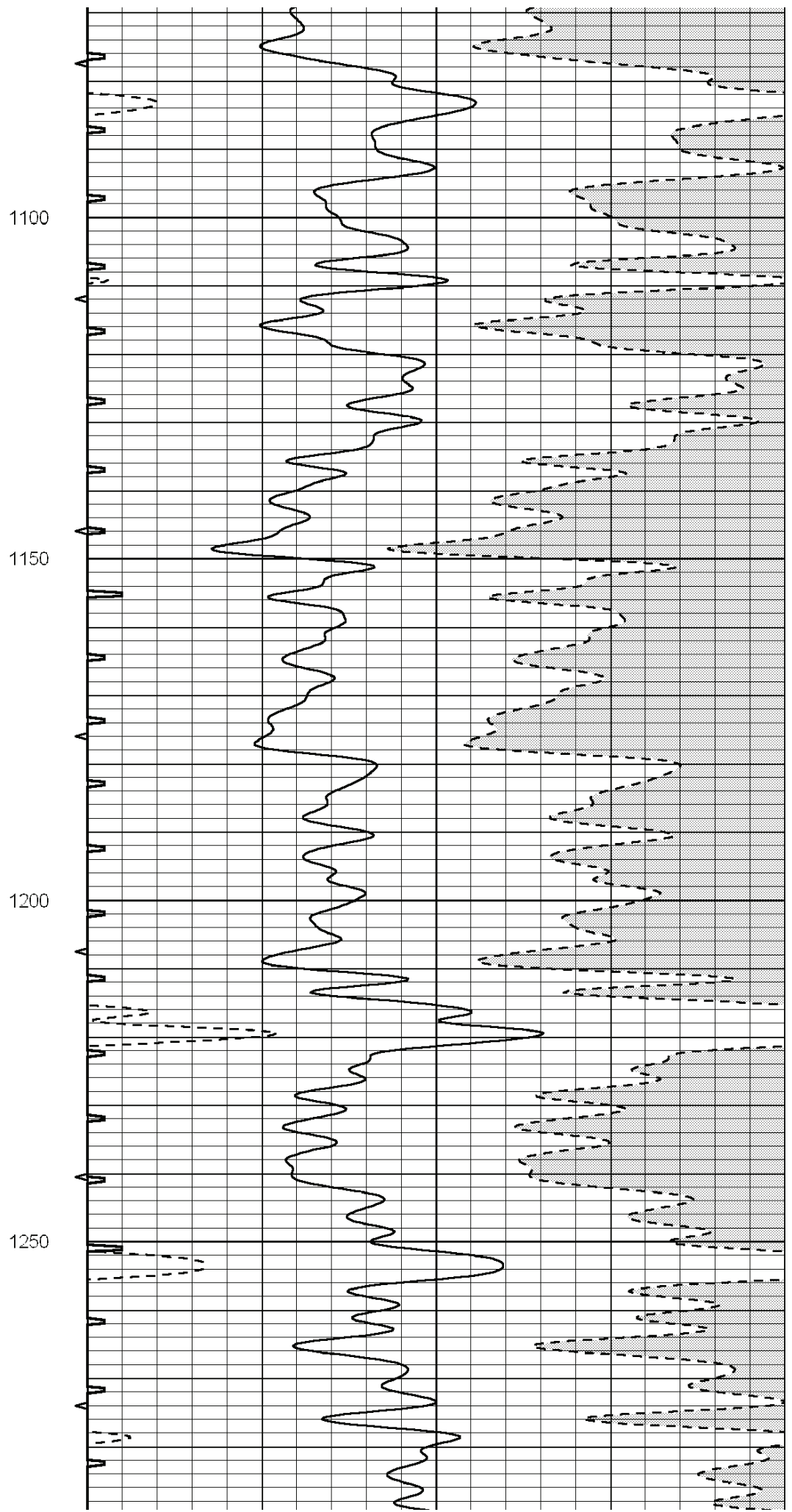
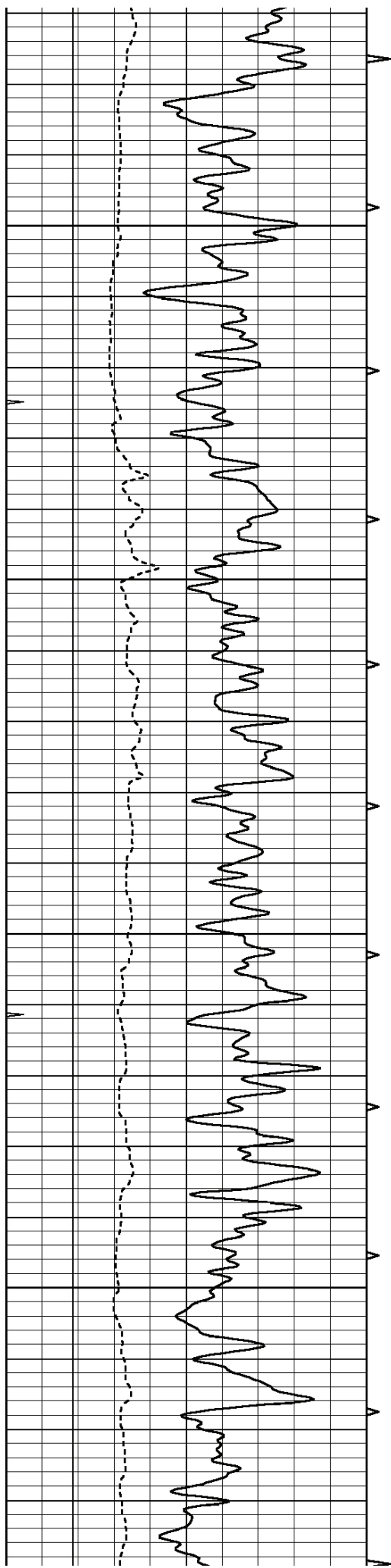
700

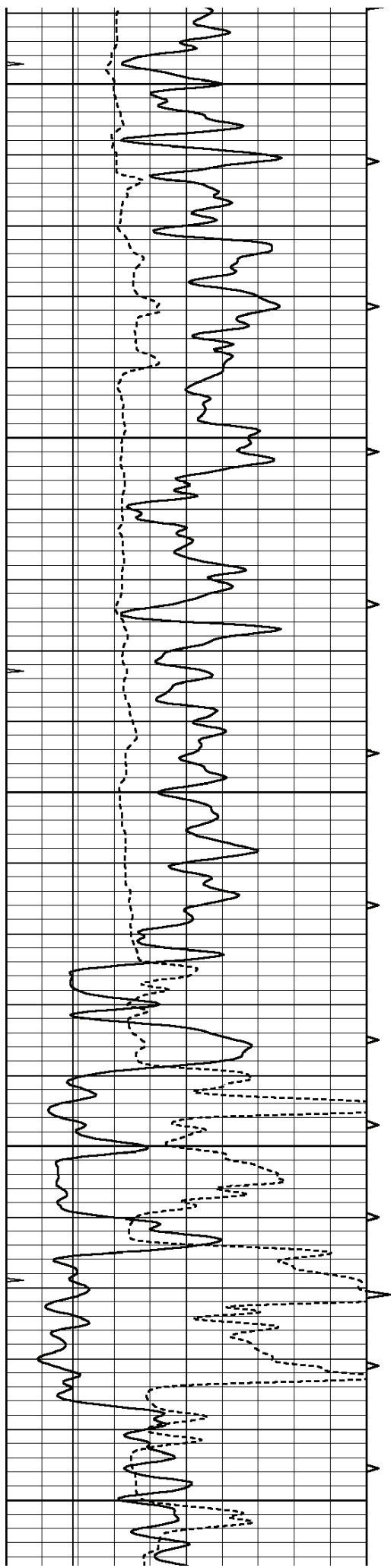
750

800

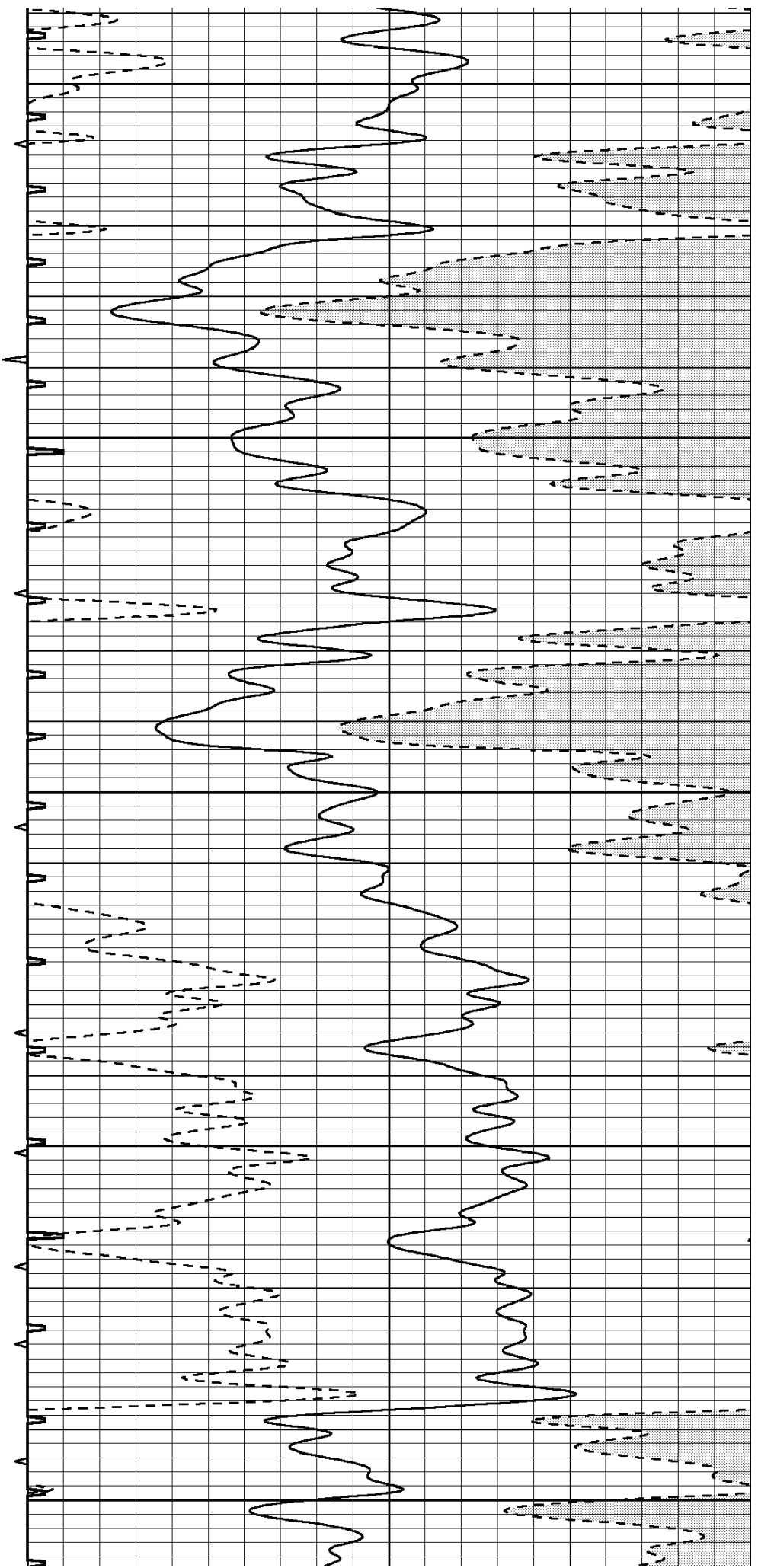


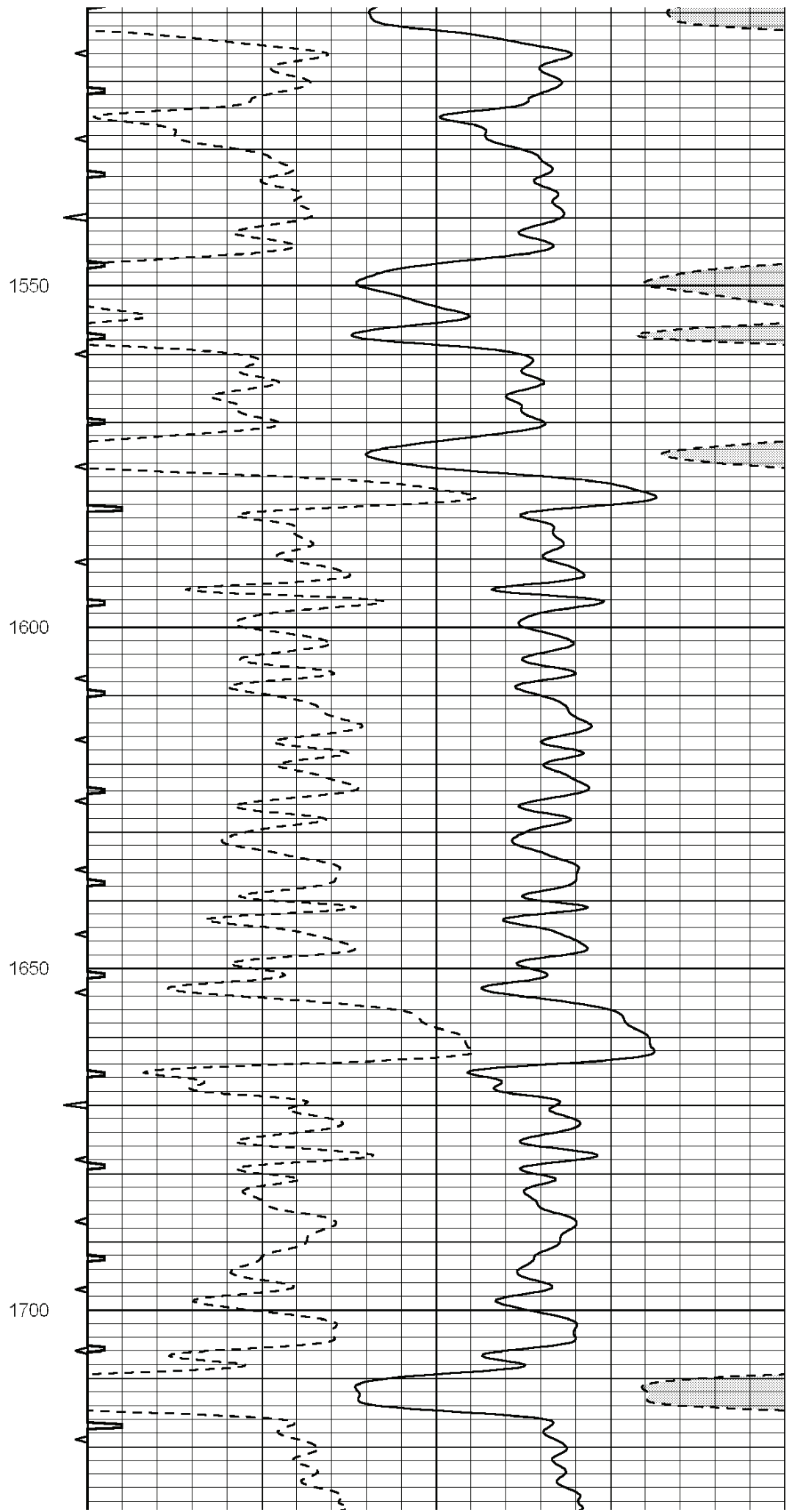
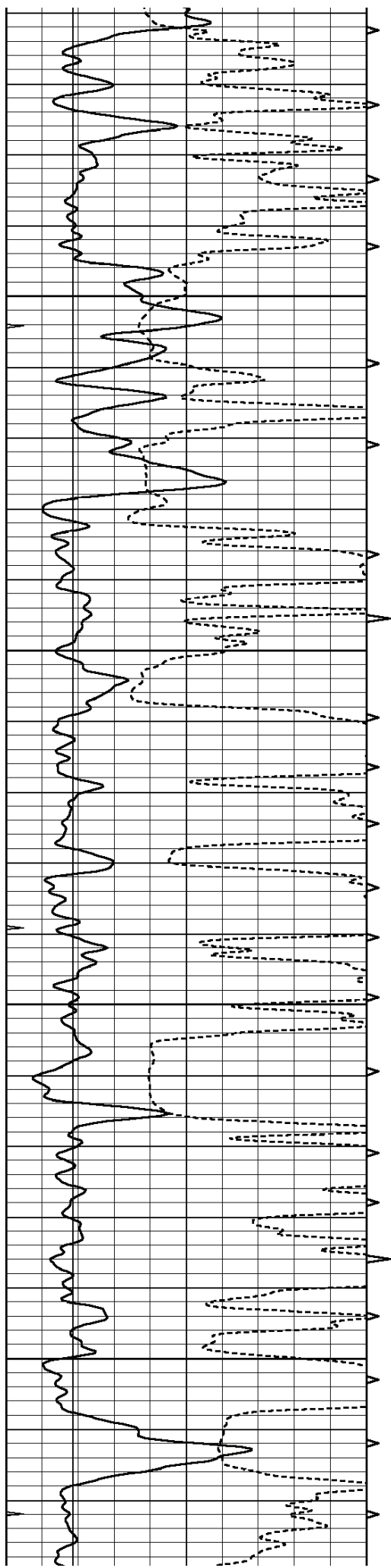


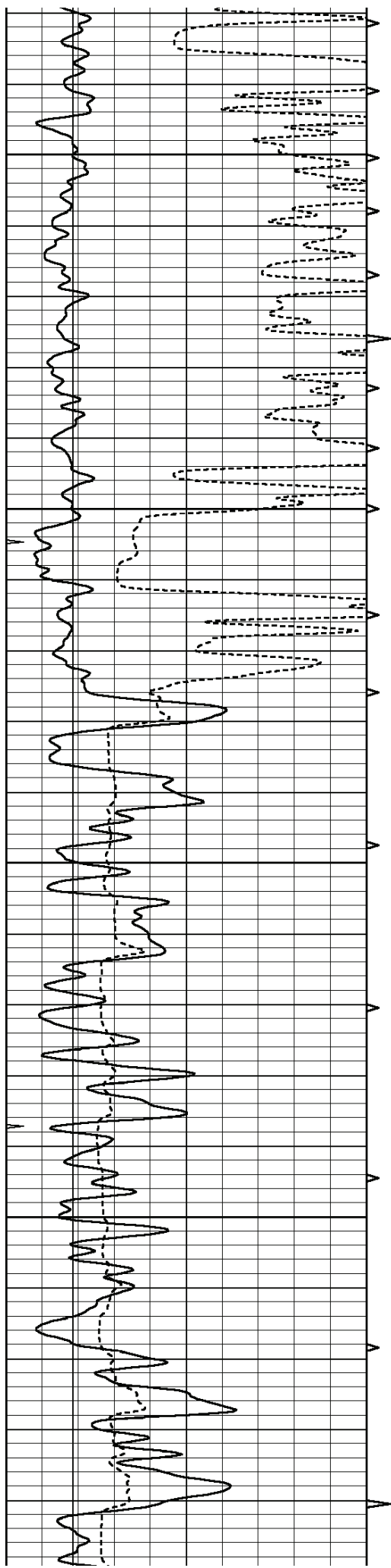




1300
1350
1400
1450
1500





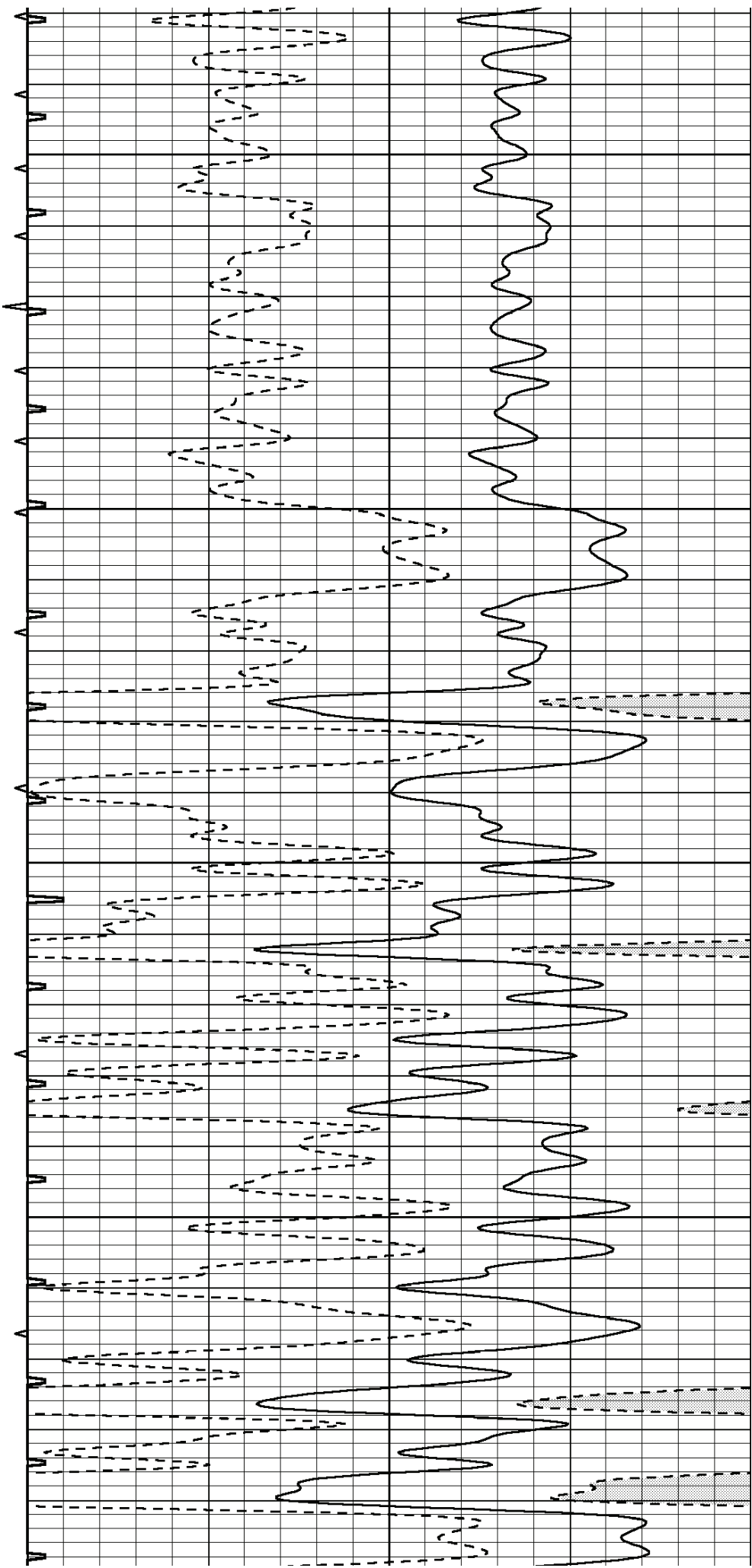


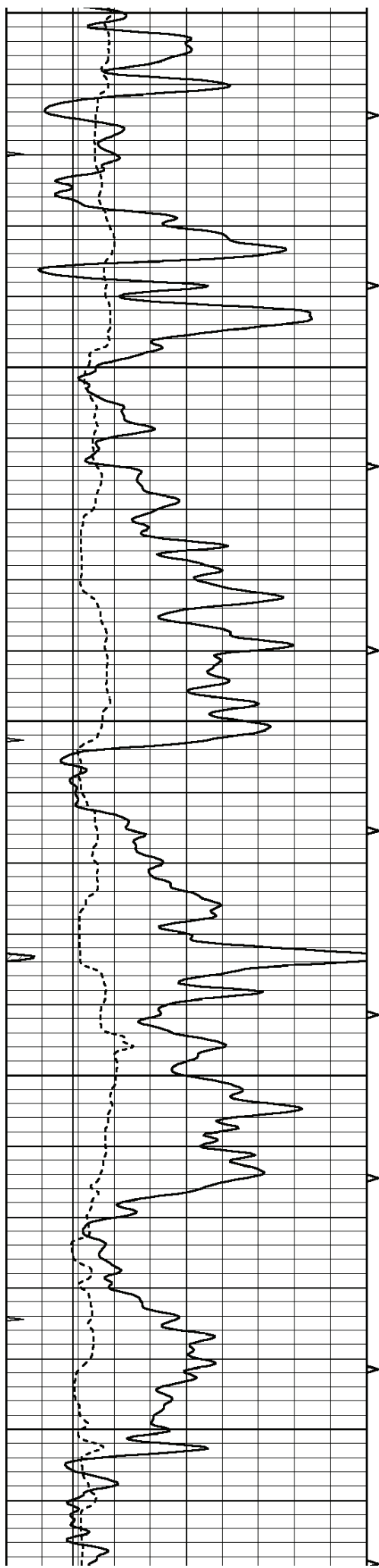
1750

1800

1850

1900





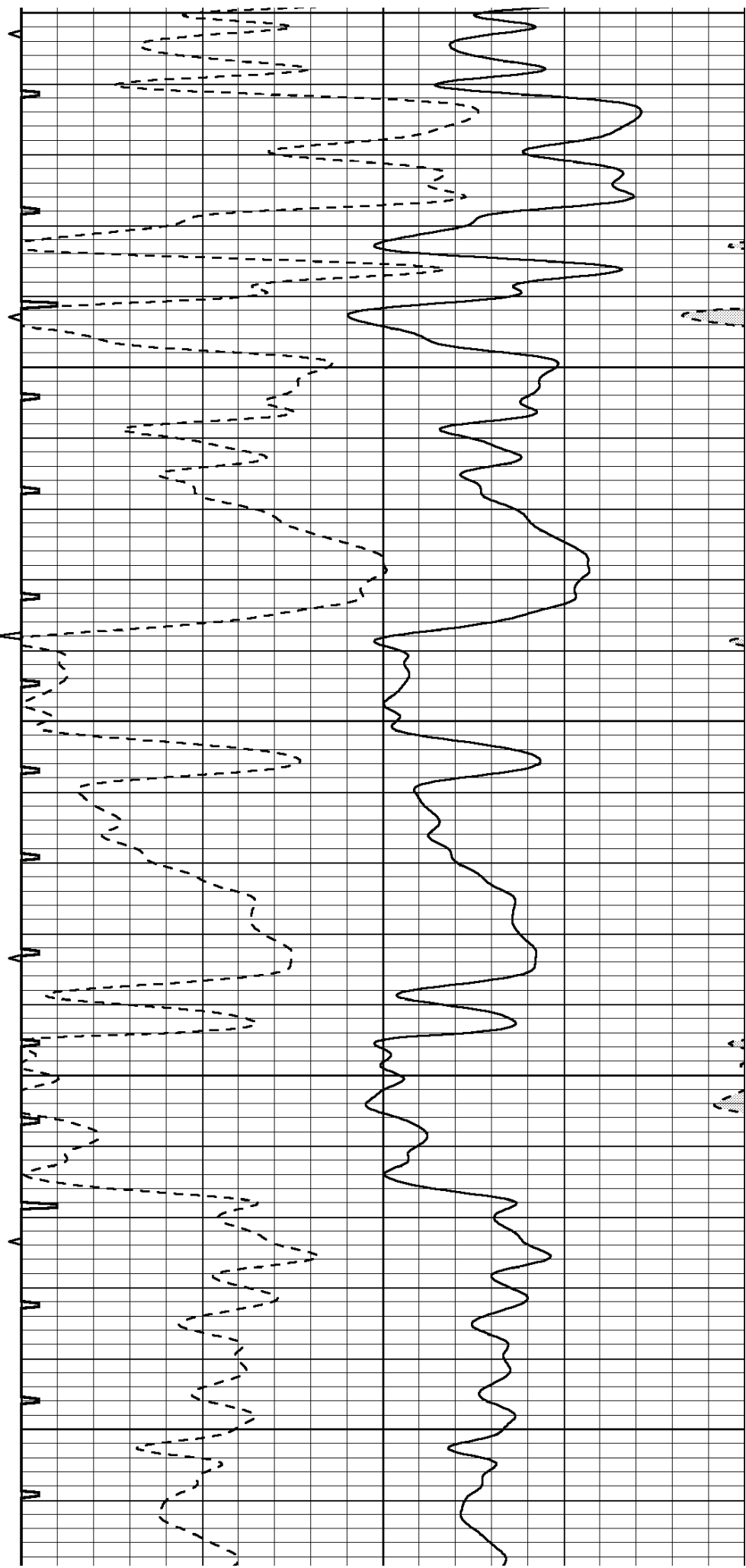
1950

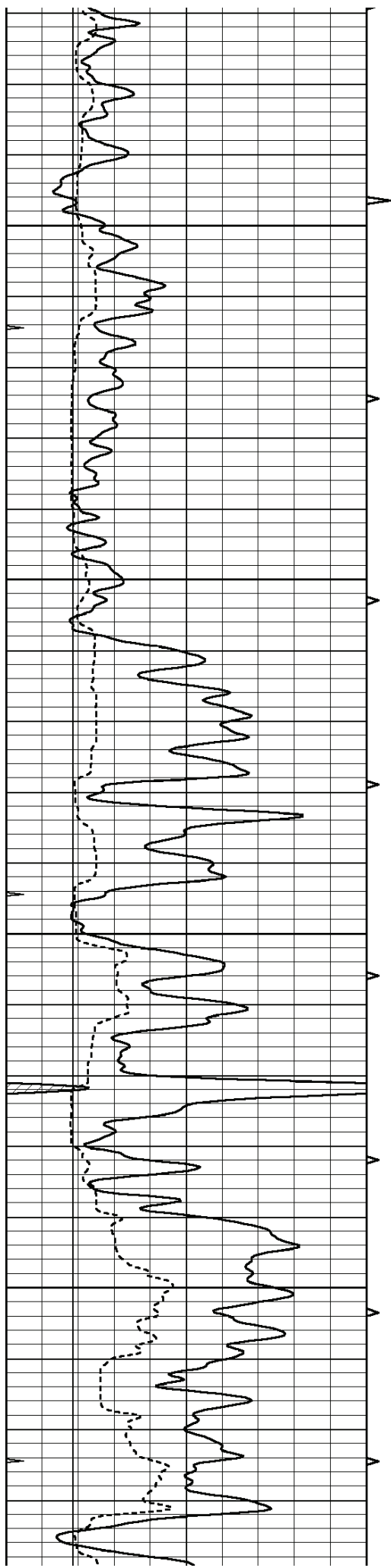
2000

2050

2100

2150



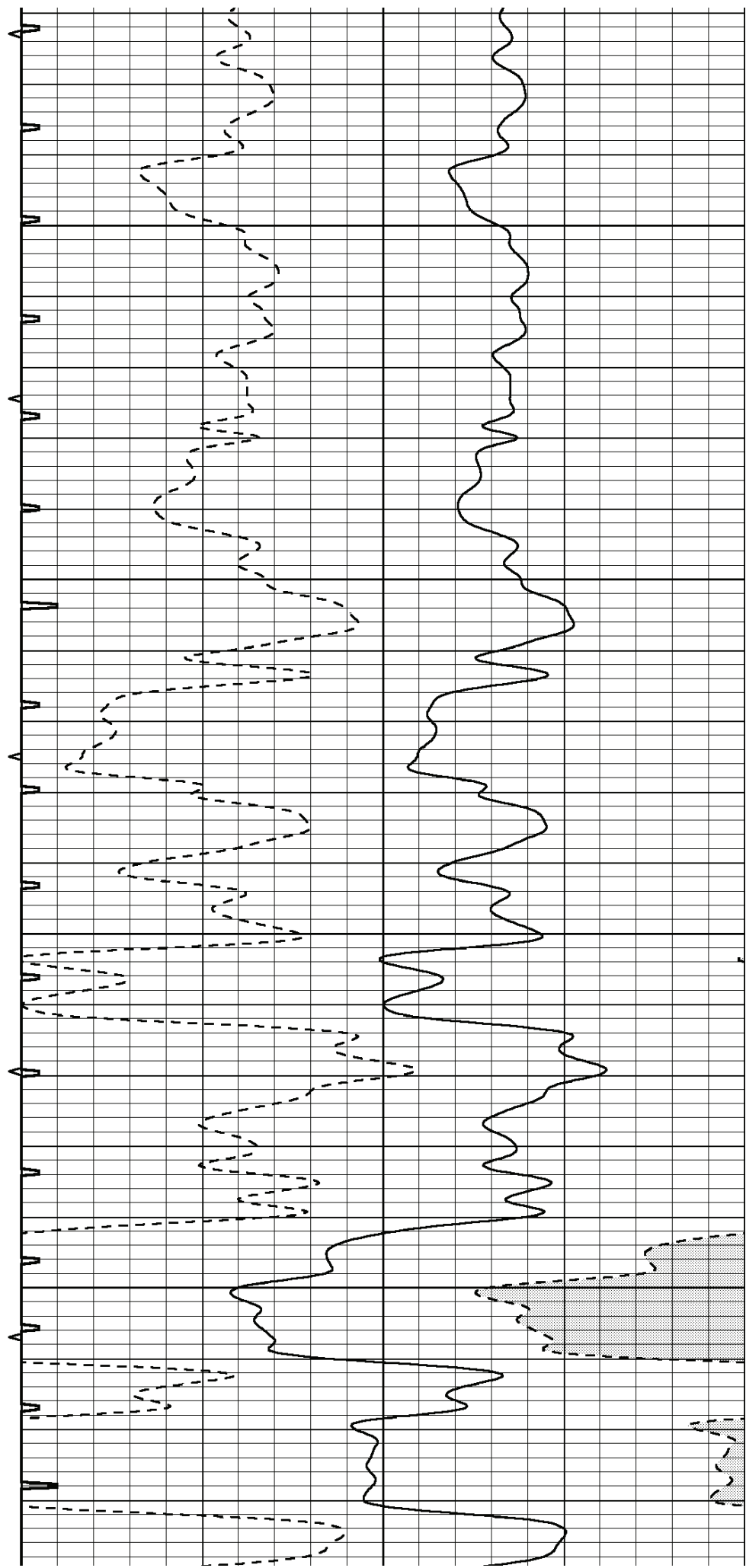


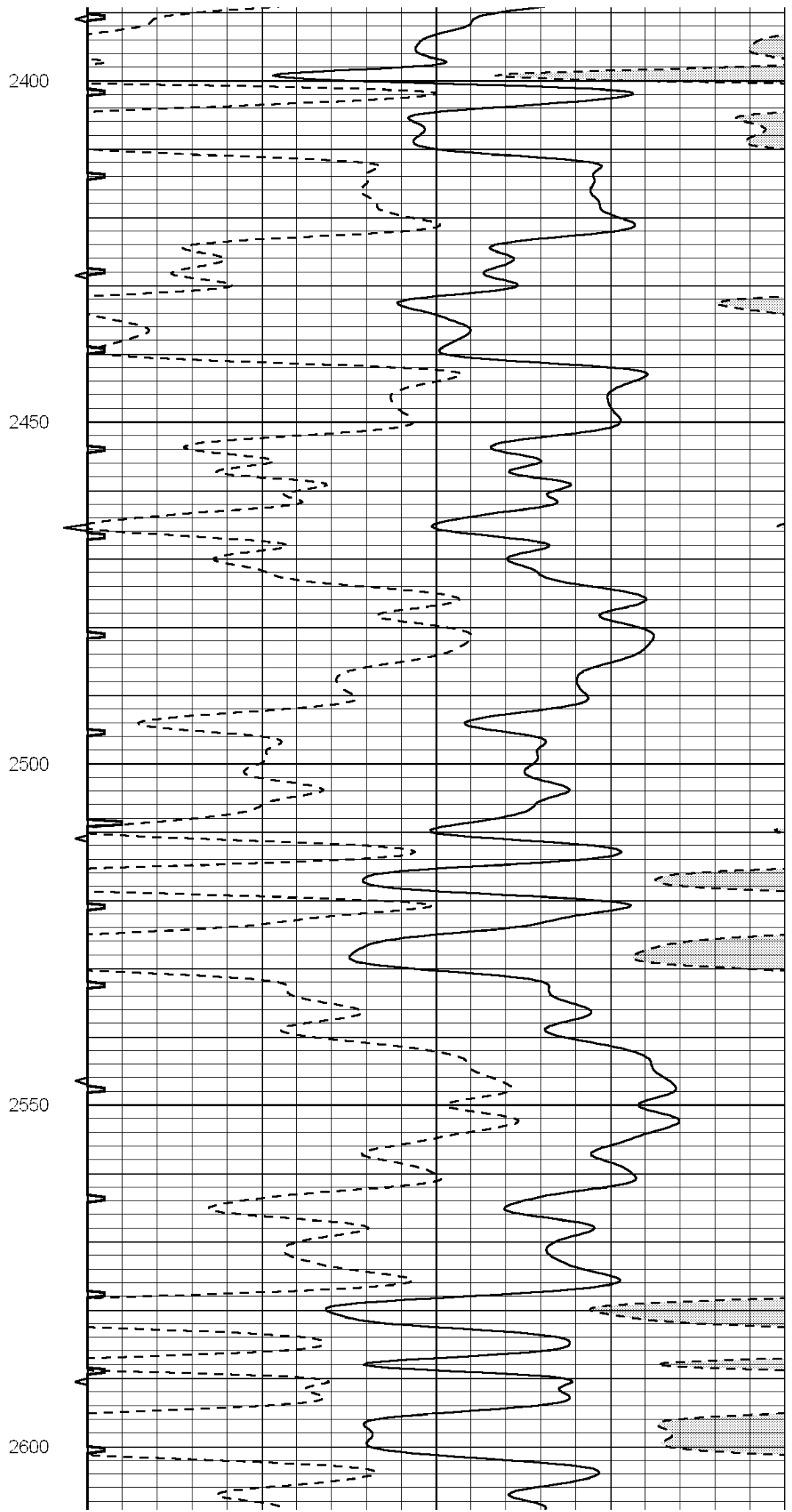
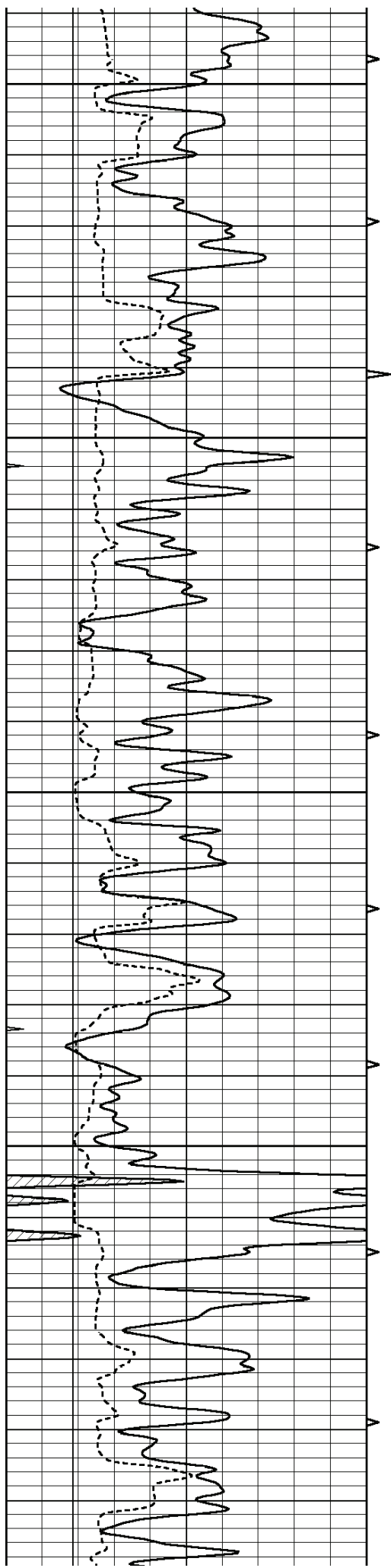
2200

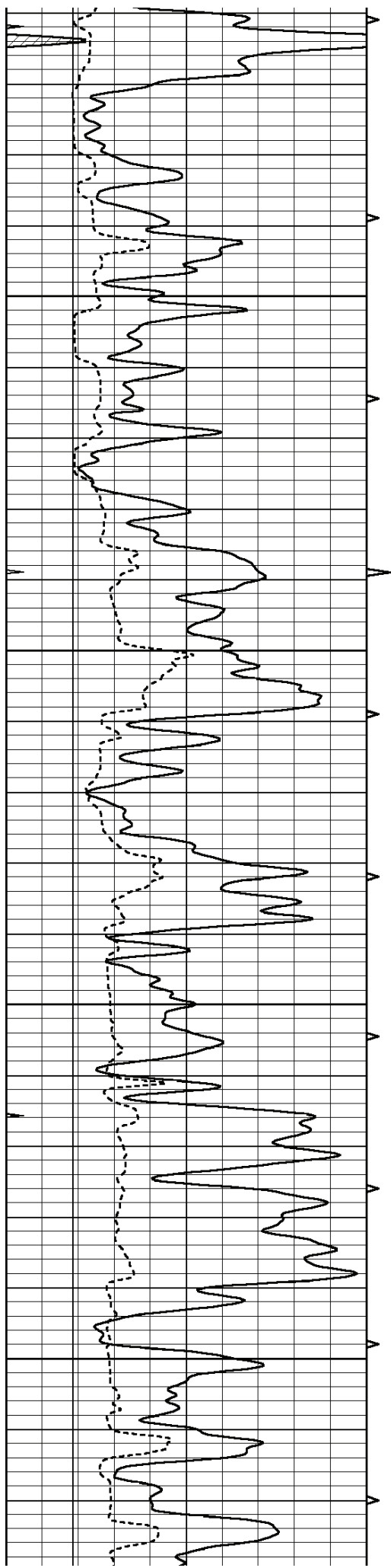
2250

2300

2350





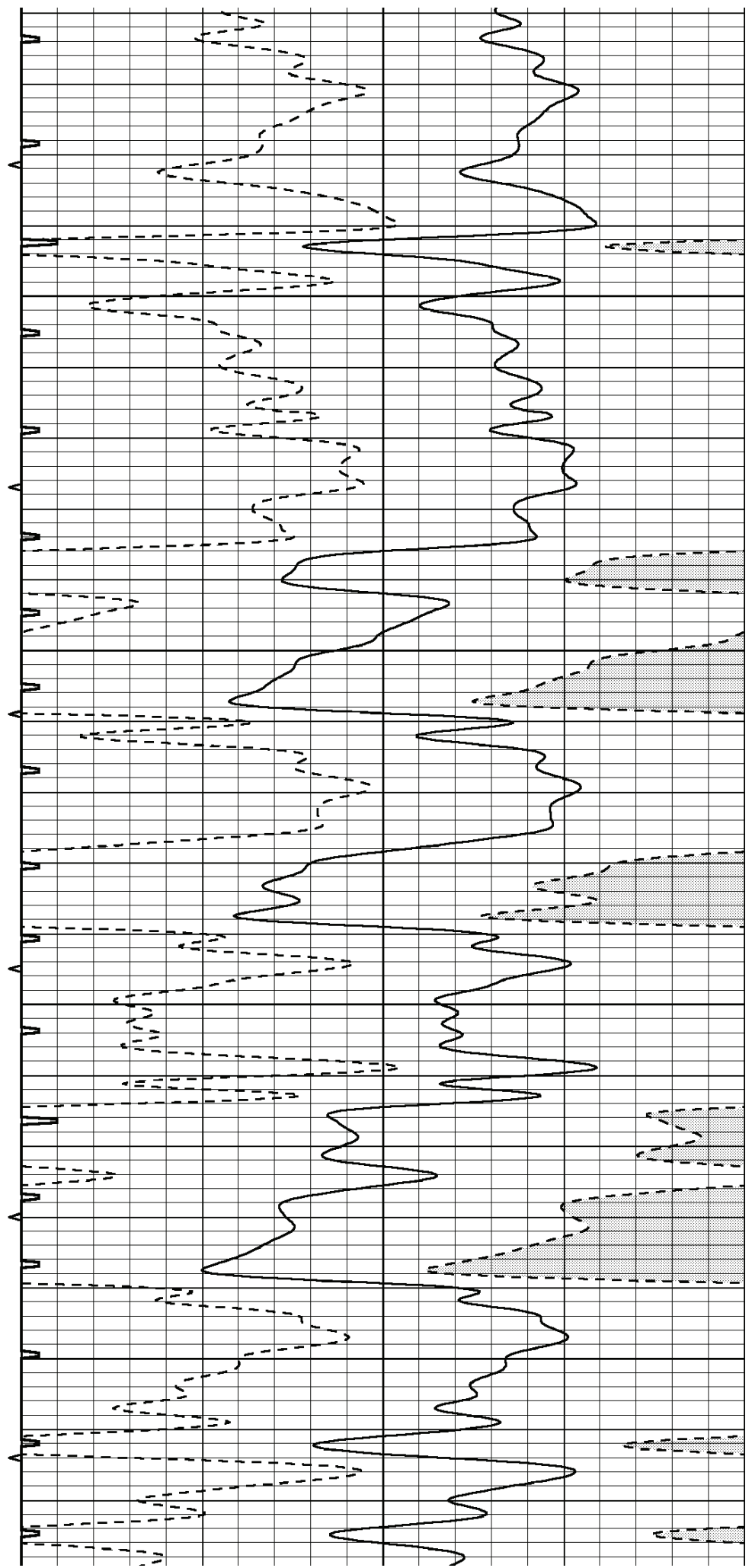


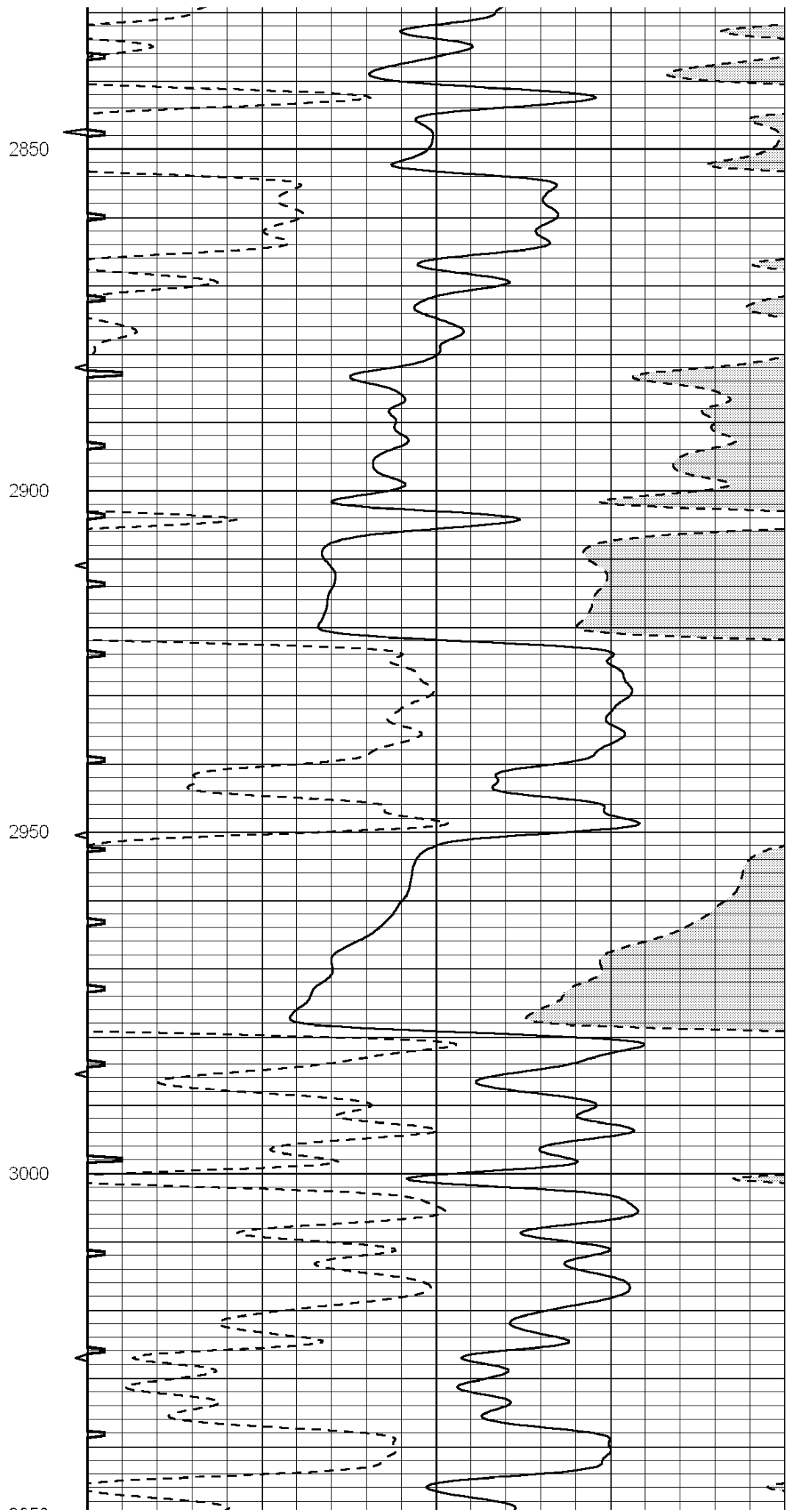
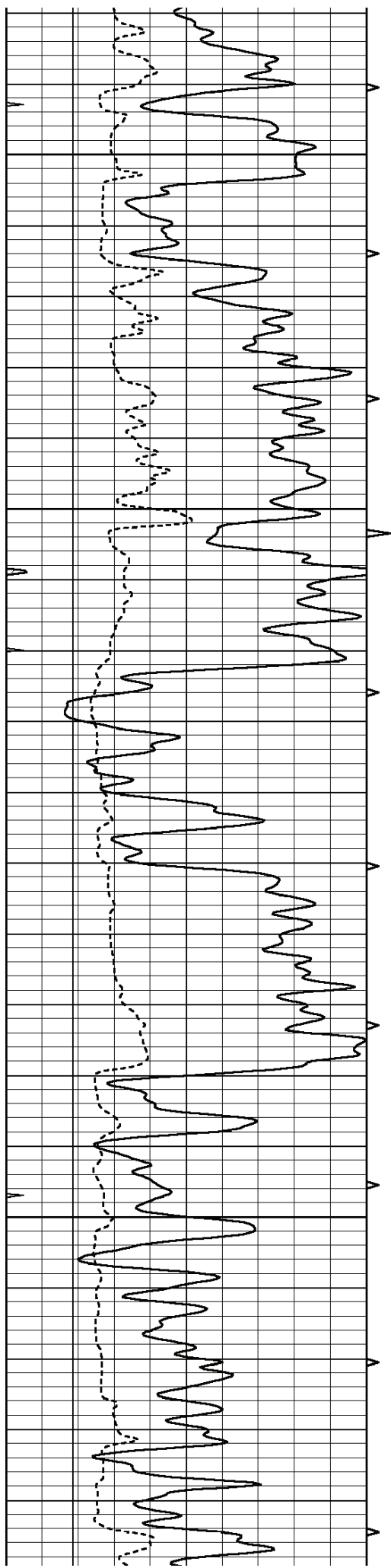
2650

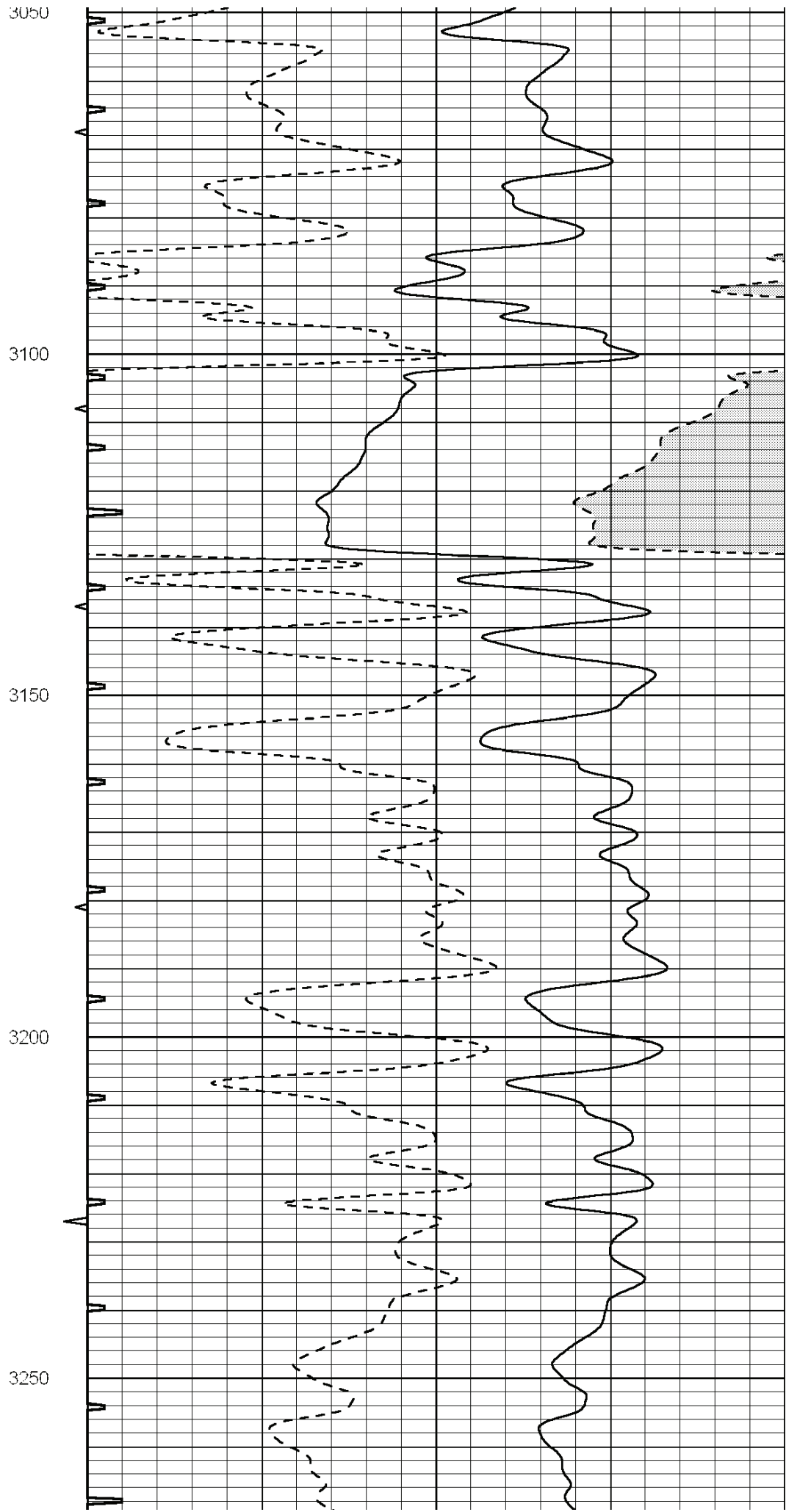
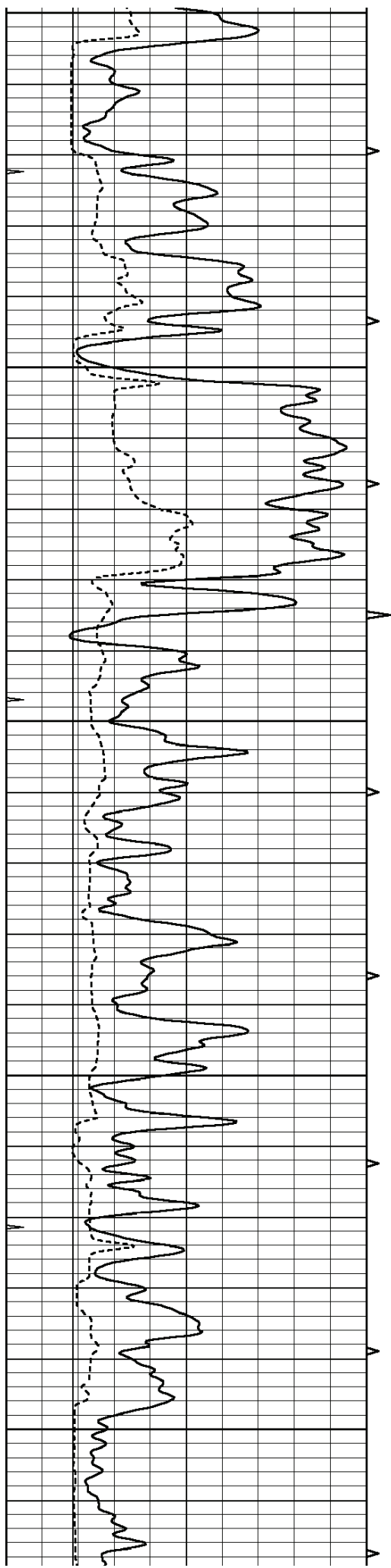
2700

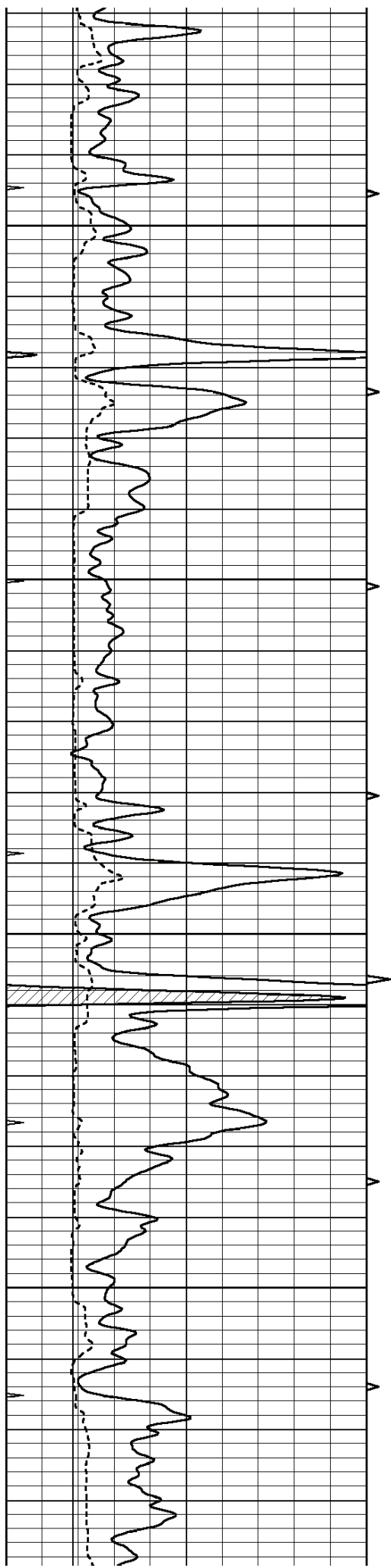
2750

2800







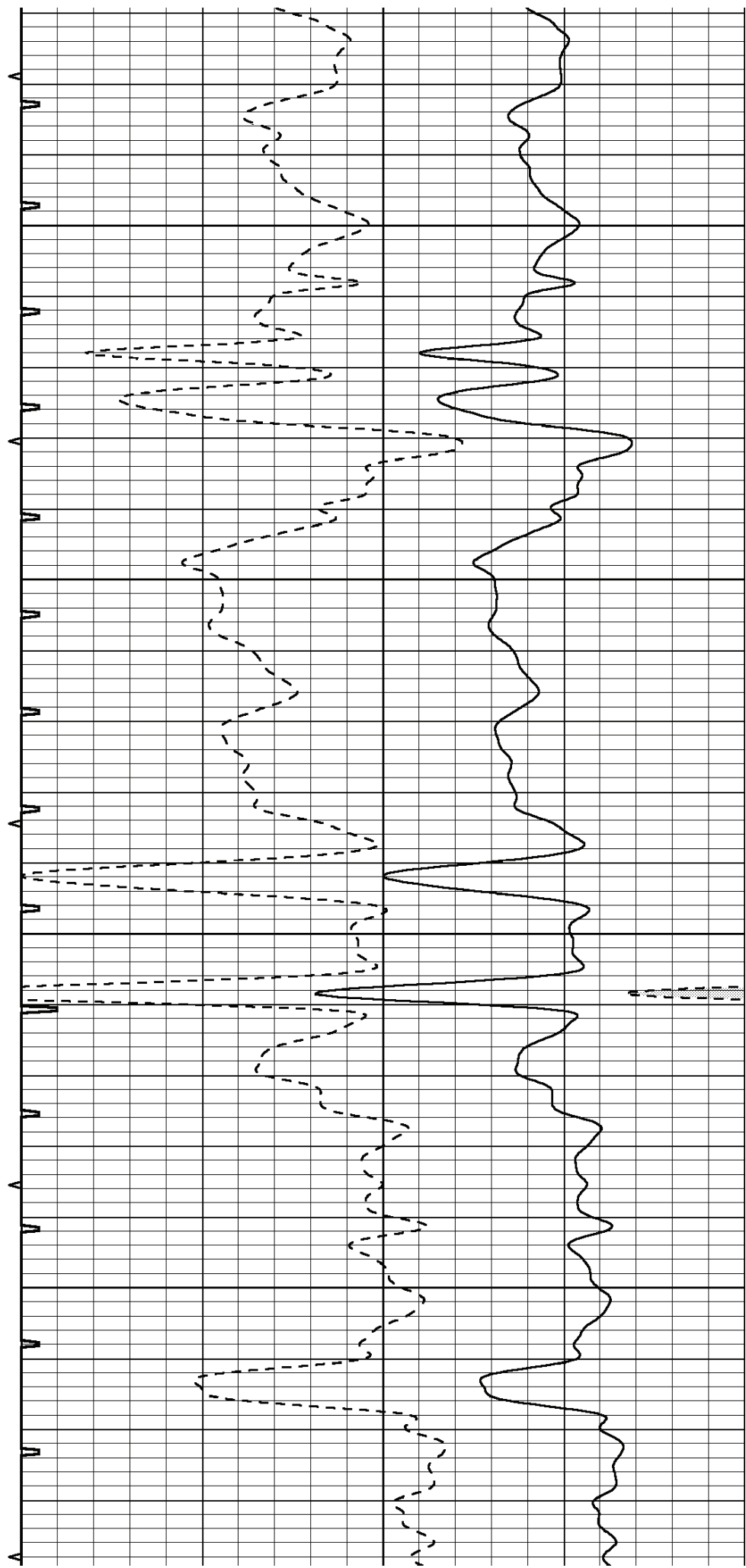


3300

3350

3400

3450

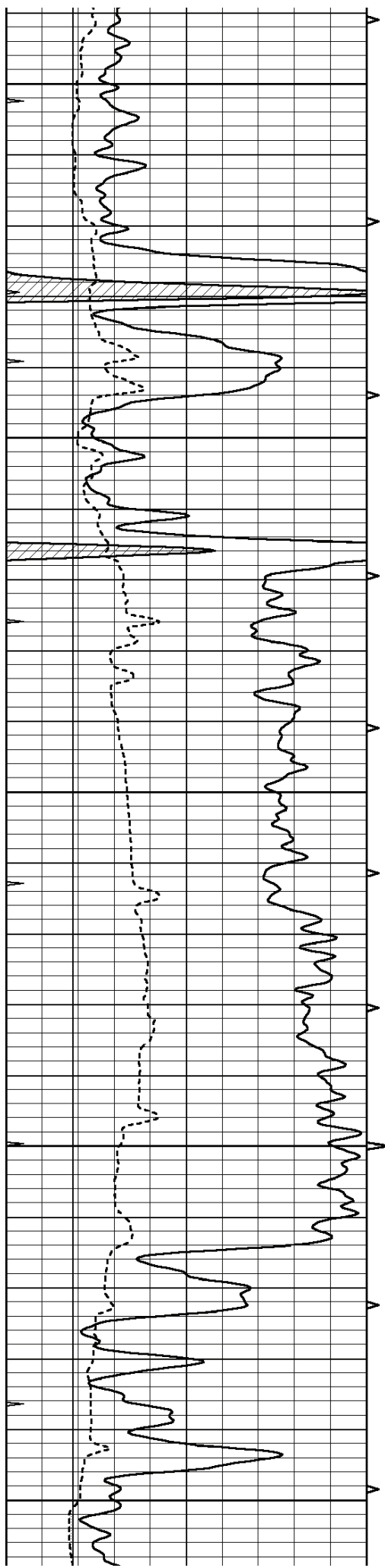


3300

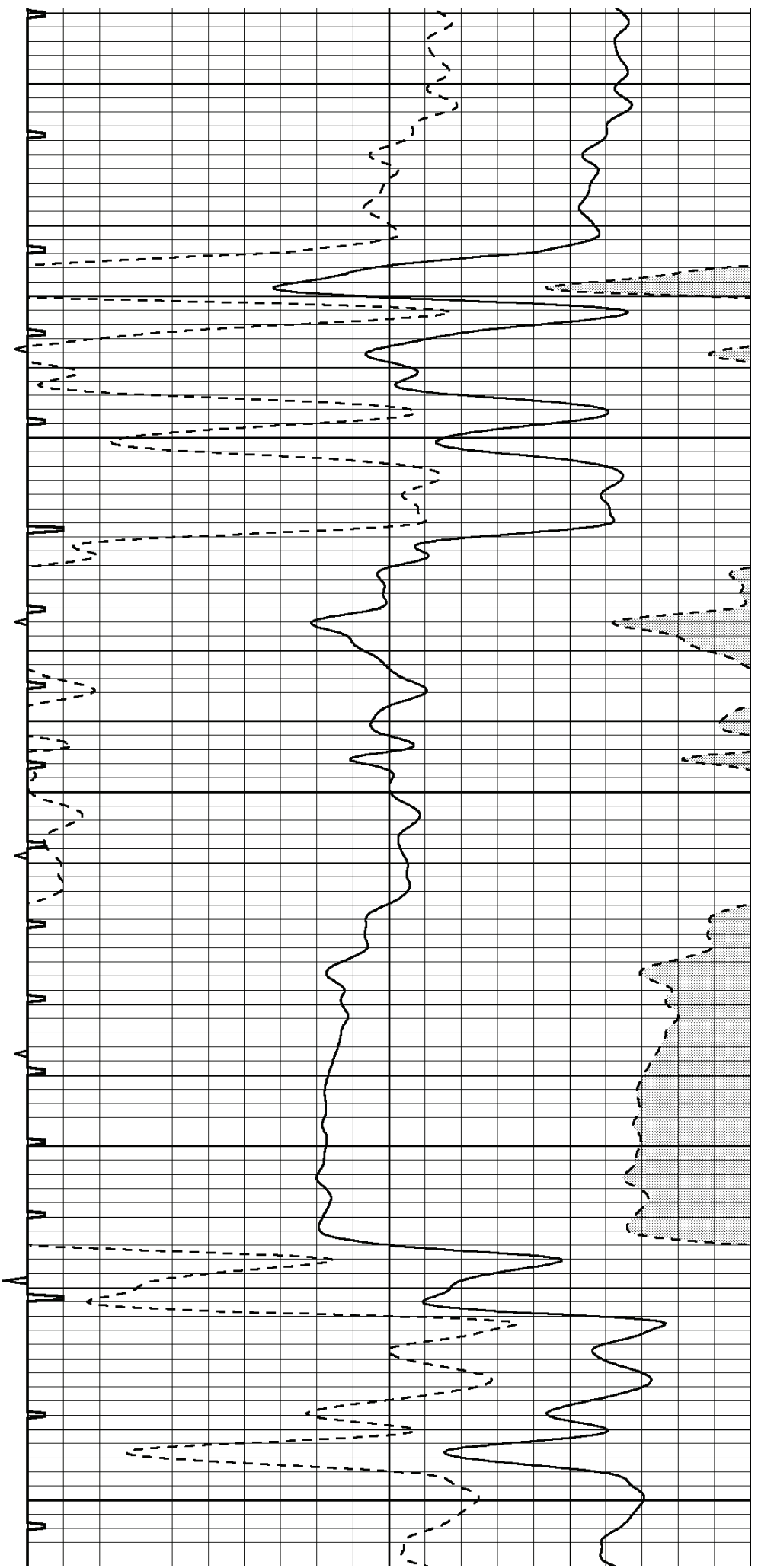
3350

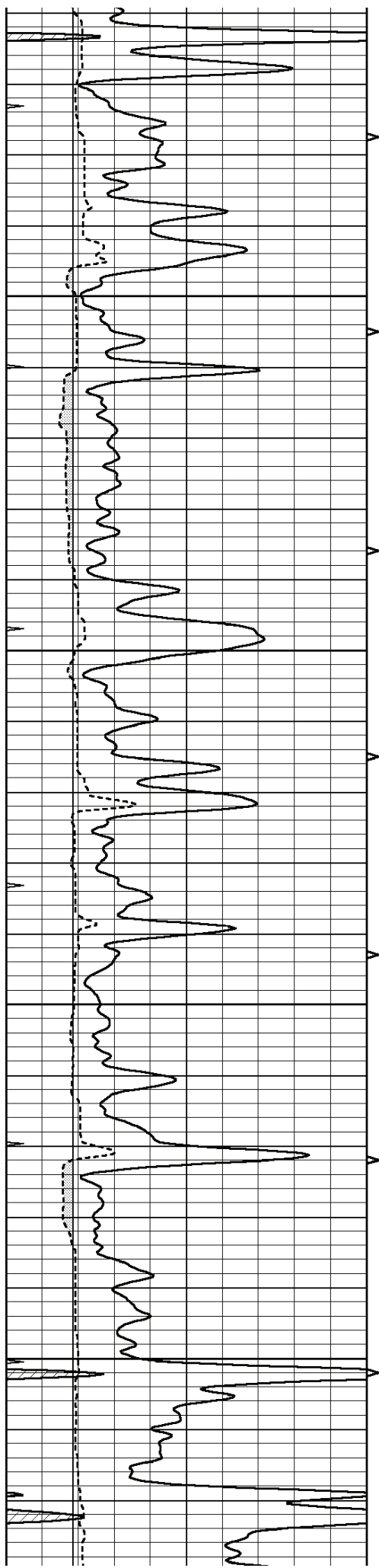
3400

3450



3500
3550
3600
3650
3700



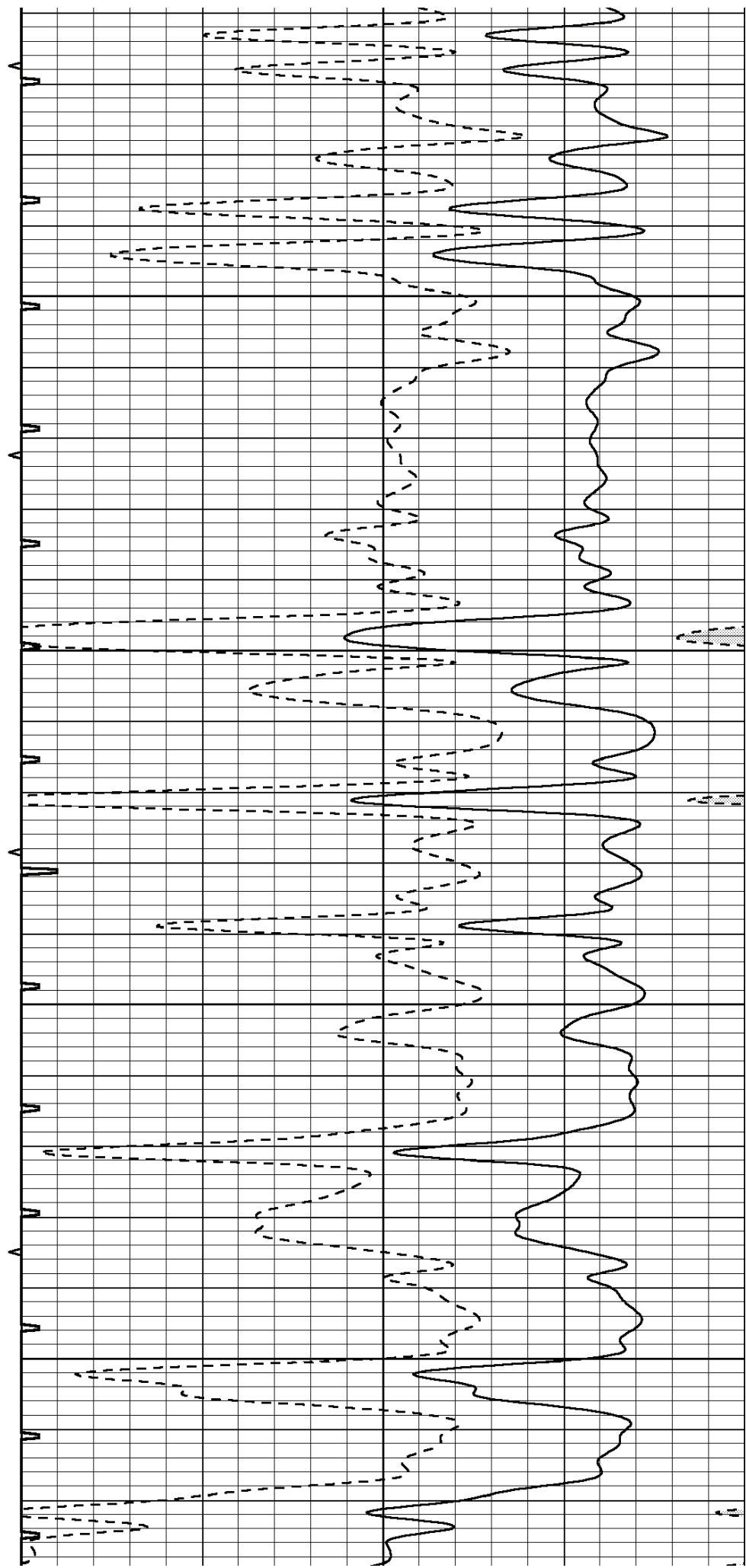


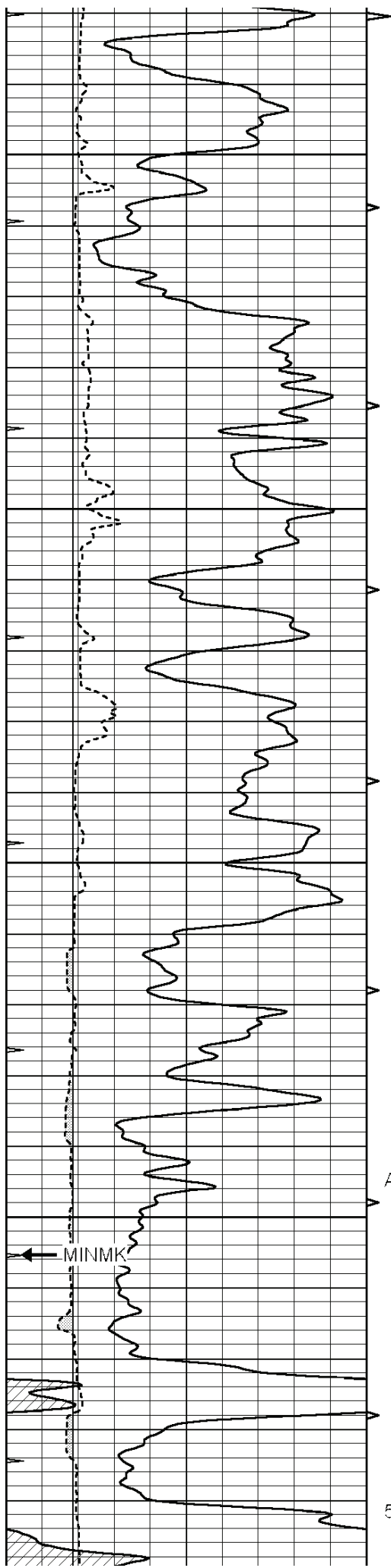
3750

3800

3850

3900





3950

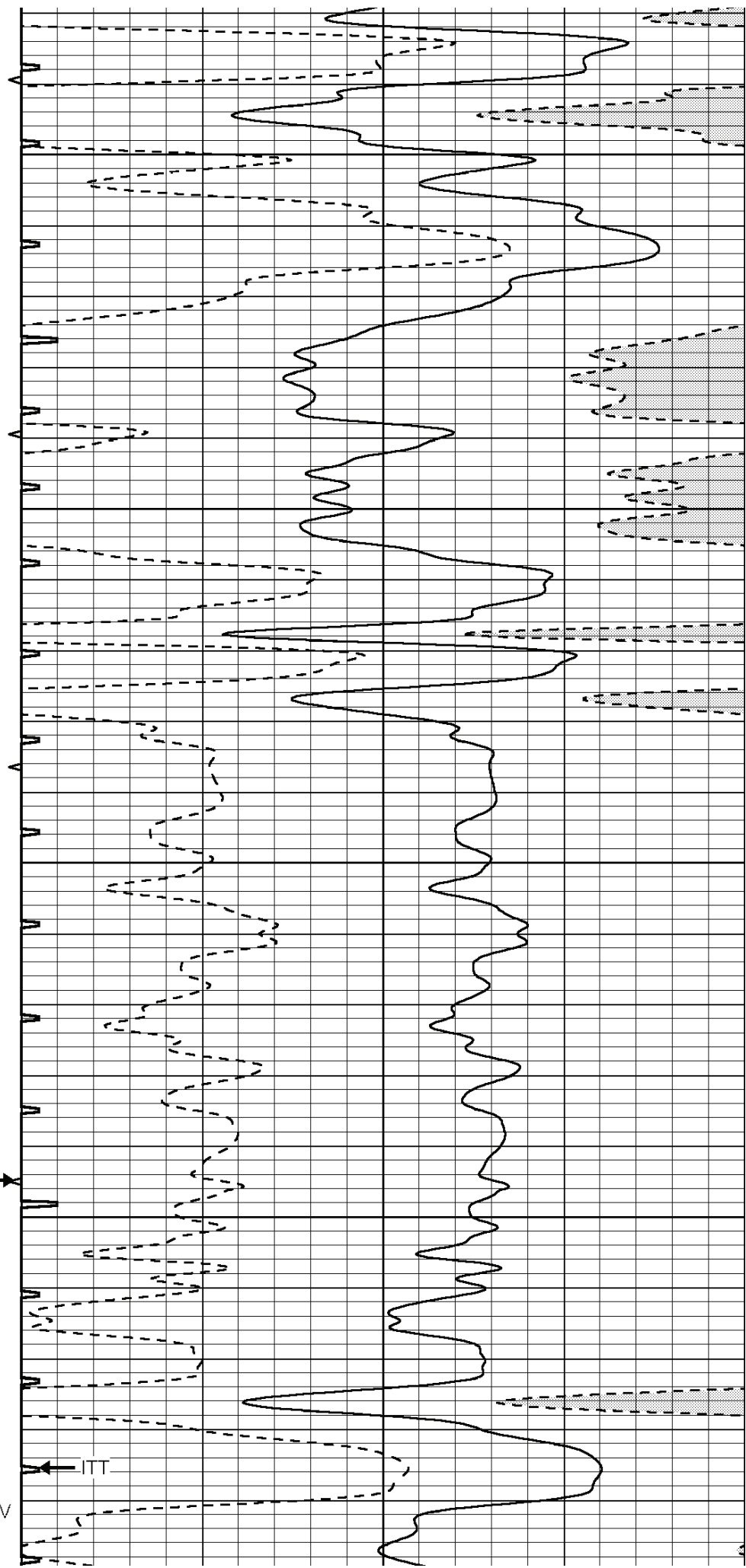
4000

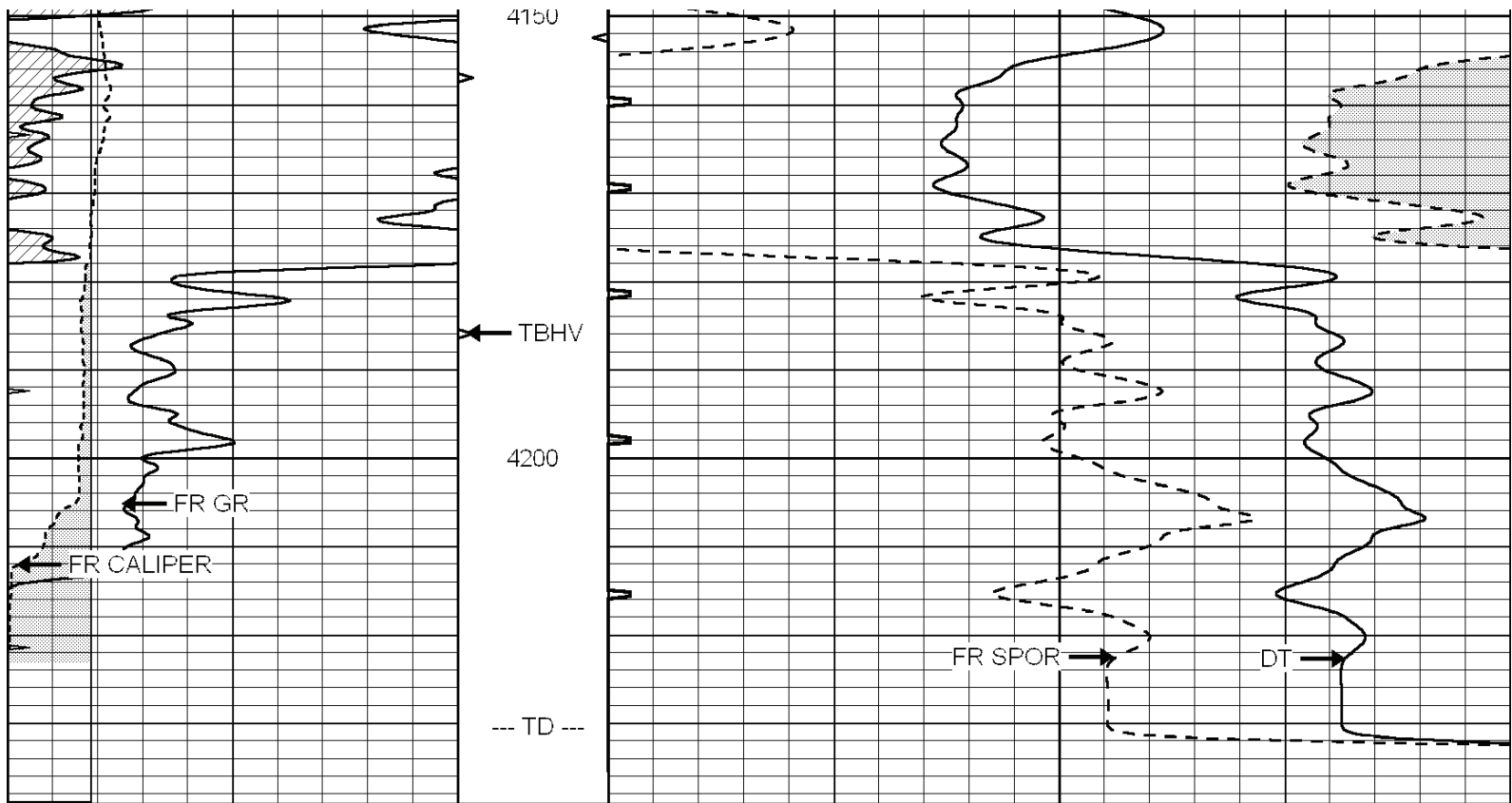
4050

ABHV →

4100

5.5" ABHV





0	GAMMA RAY (GAPI)	150	ABHV	140	DELTA TIME (usec/ft)	40	
6	CALIPER (in)	16	10 (ft3)	0	30	SONIC POROSITY (pu)	-10
0	MINMK	20	TBHV	0	ITT (msec)	20	
			0 (ft3)	10			