



**SUPERIOR  
Hays,  
Kansas**

**DUAL  
INDUCTION  
LOG**

Company OIL PRODUCERS, INC. OF KANSAS  
Well VOSBURGH #1-2  
Field HEARN  
County STAFFORD State KANSAS

Location: API # :

Other Services  
CDL/CNL  
SONIC/MEL

SEC 2 TWP 24S RGE 15W

Permanent Datum GROUD LEVEL Elevation 2001  
Log Measured From KELLY BUSHING 5' A.G.L.  
Drilling Measured From KELLY BUSHING

Elevation

K.B. 2006  
D.F.  
G.L. 2001

Date	12-22-10
Run Number	ONE
Depth Driller	4230
Depth Logger	4230
Bottom Logged Interval	4228
Top Log Interval	00
Casing Driller	268
Casing Logger	268
Bit Size	7.875
Type Fluid in Hole	CHEMICAL MUD
Density / Viscosity	9.2 / 49
pH / Fluid Loss	9.5 / 14.8
Source of Sample	FLOWLINE
Rim @ Meas. Temp	0.85 @ 70F
Rimf @ Meas. Temp	0.64 @ 70F
Rimc @ Meas. Temp	1.02 @ 70F
Source of Rimf / Rimc	MEASURED
Rim @ BHT	.510 @ 117F
Time Circulation Stopped	2 HOURS
Time Logger on Bottom	5:30 A.M.
Maximum Recorded Temperature	117F
Equipment Number	860
Location	HAYS, KS.
Recorded By	RUPP
Witnessed By	DEREK PATTERSON

<<< Fold Here >>>

All interpretations are opinions based on inferences from electrical or other measurements and we cannot and do not guarantee the accuracy or correctness of any interpretation, and we shall not, except in the case of gross or willful negligence on our part, be liable or responsible for any loss, costs, damages, or expenses incurred or sustained by anyone resulting from any interpretation made by any of our officers, agents or employees. These interpretations are also subject to our general terms and conditions set out in our current Price Schedule.

Comments

SUPERIOR WELL SERVICES  
785-628-6395  
THANK YOU FOR YOUR BUSINESS  
DIRECTIONS: jCT #281 & #50, 7W, 2N, 3W, 1/2W, S INTO.



**SUPERIOR  
Hays,  
Kansas**

**MAIN SECTION**

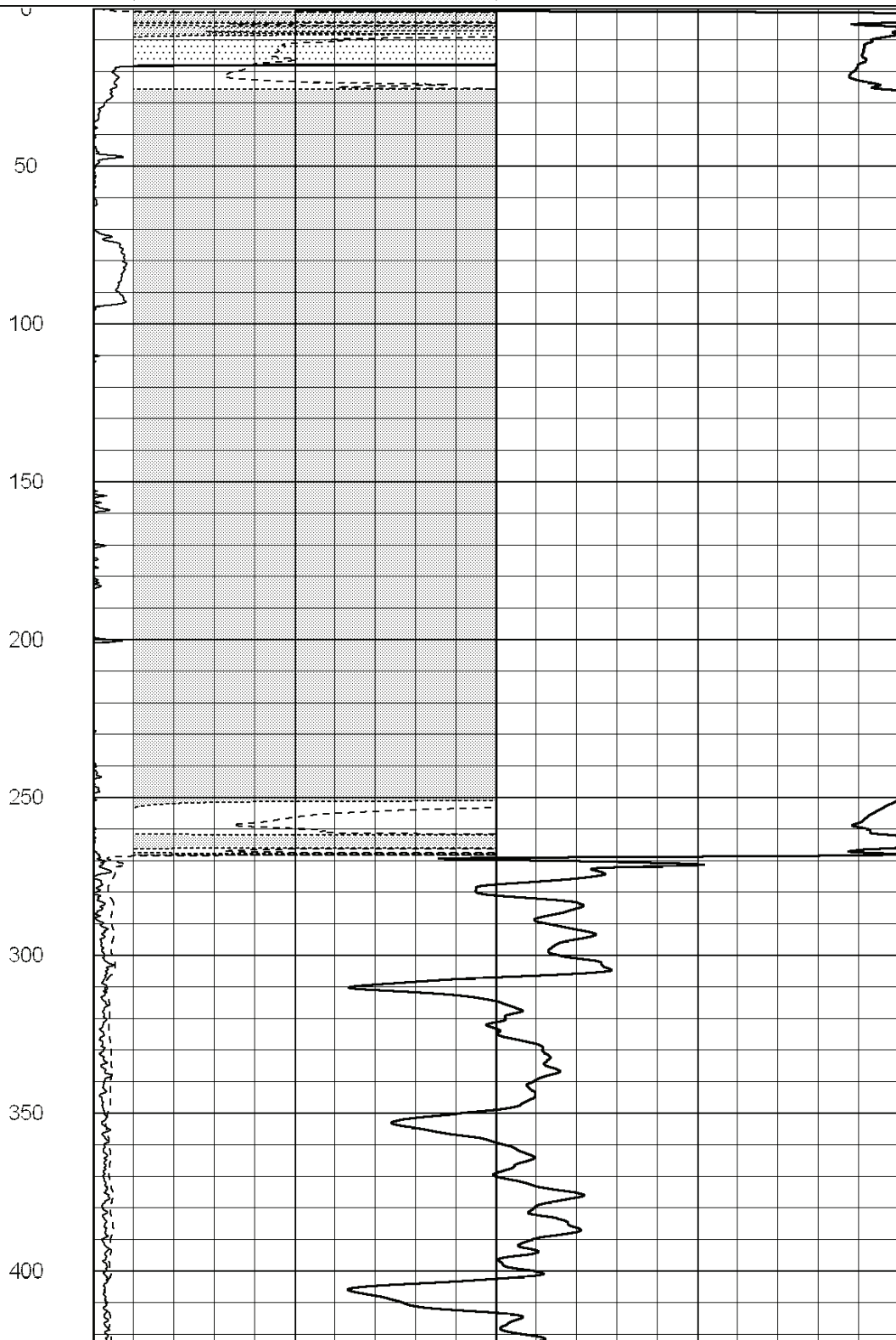
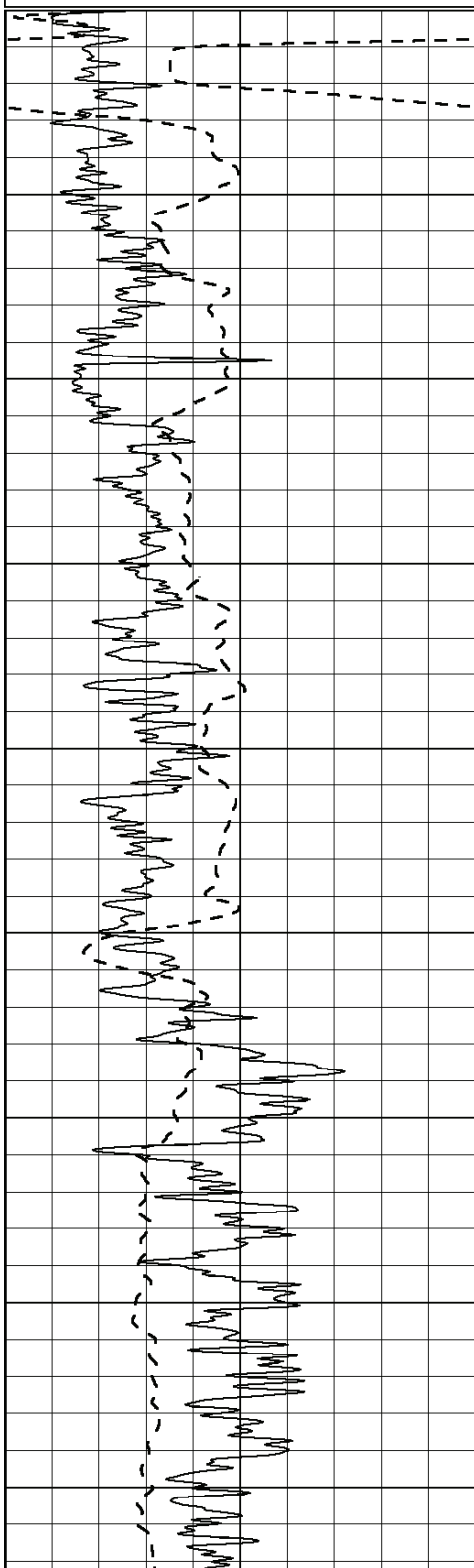


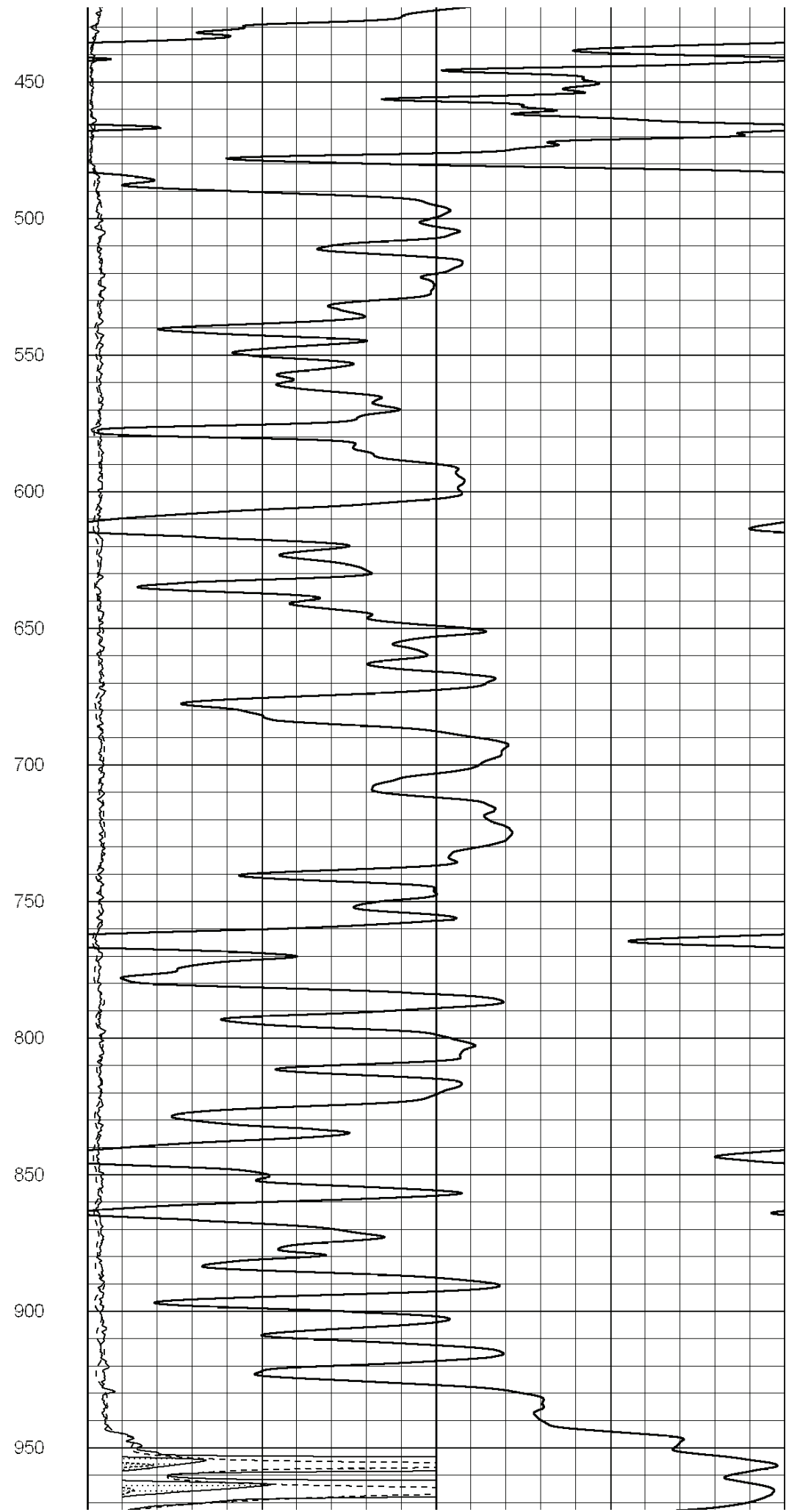
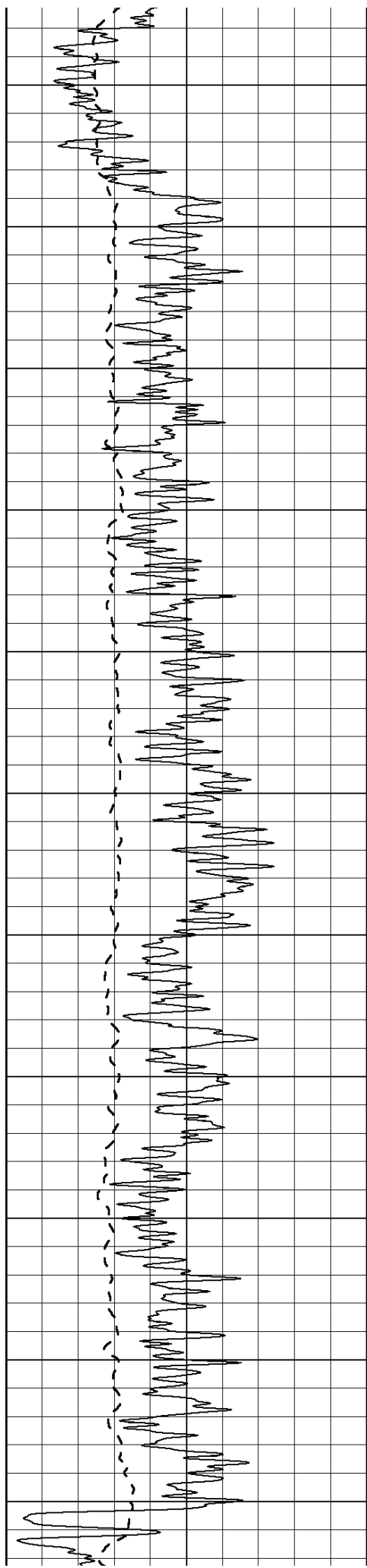
Database File: 006315ddn.db  
 Dataset Pathname: pass2.A  
 Presentation Format: dil2  
 Dataset Creation: Wed Dec 22 08:25:37 2010  
 Charted by: Depth in Feet scaled 1:600

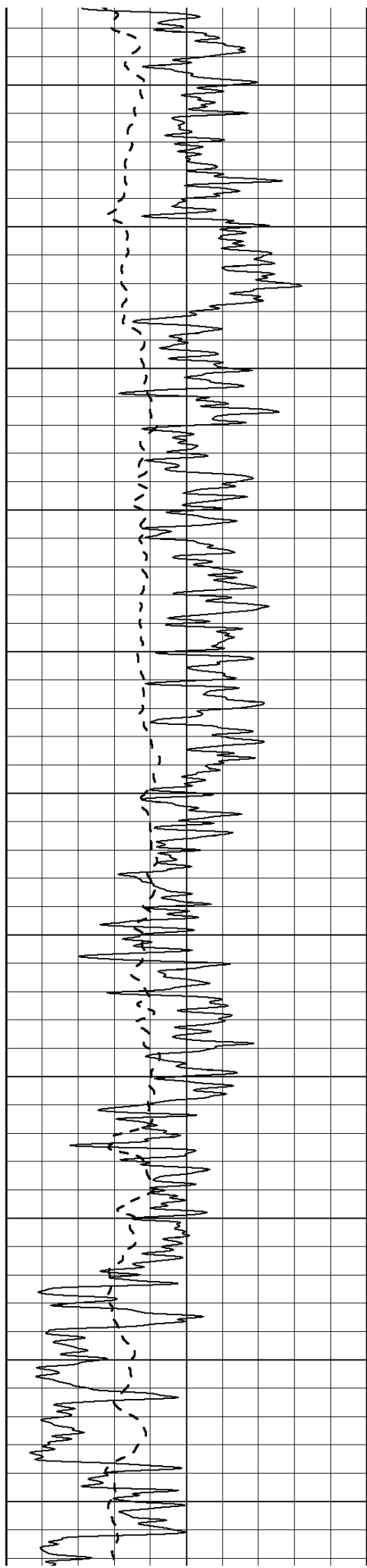
0	Gamma Ray (GAPI)	150
-100	SP (mV)	100

0	RLL3 (Ohm-m)	50
0	Deep Induction (Ohm-m)	50

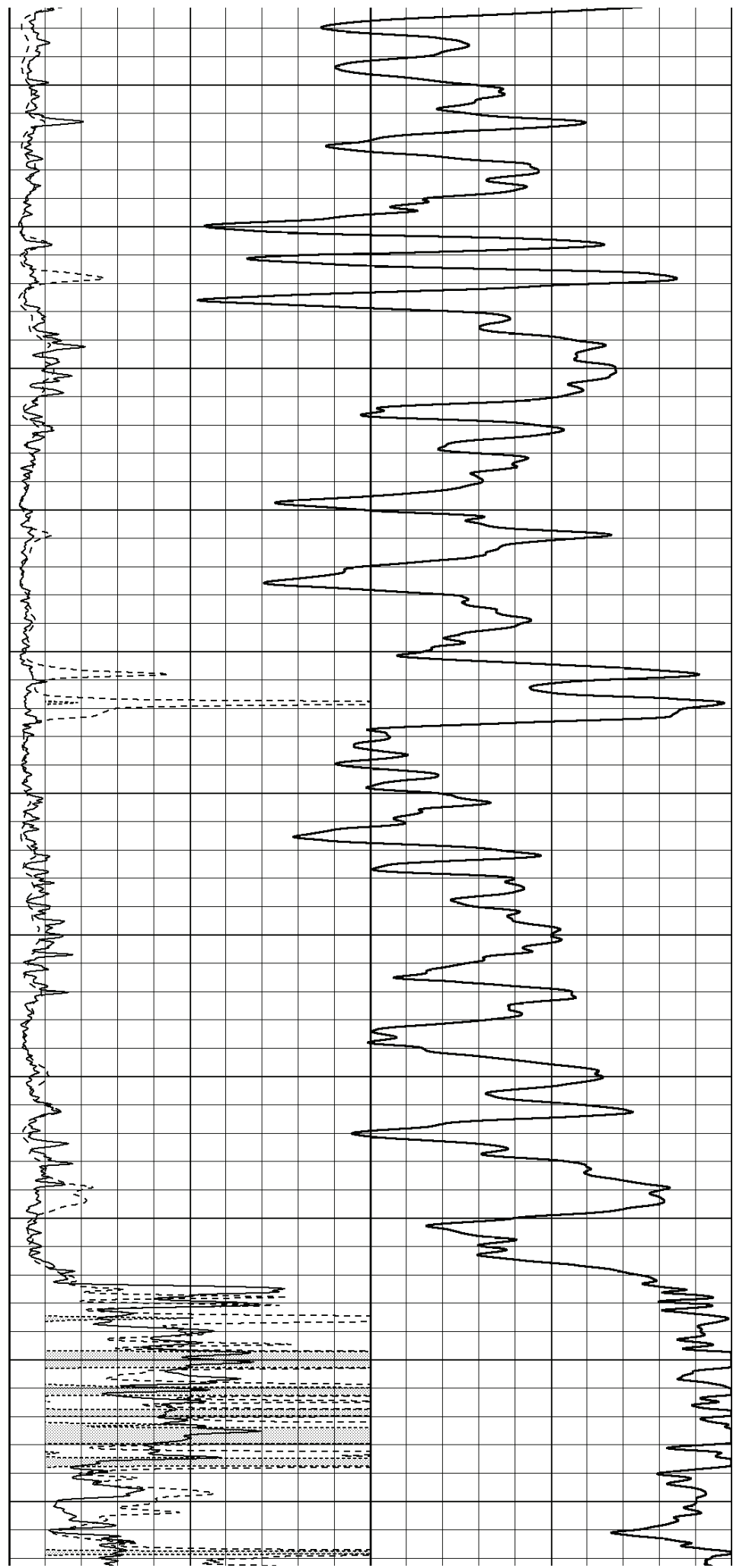
1000	CILD (mmho/m)	0
50	RILD X10 (Ohm-m)	500
50	RLL3 X10 (Ohm-m)	500

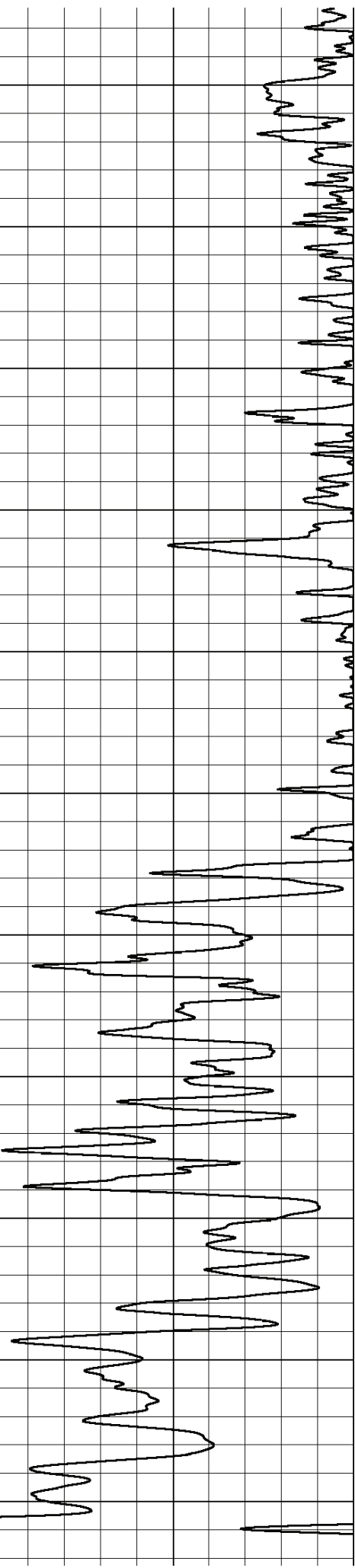
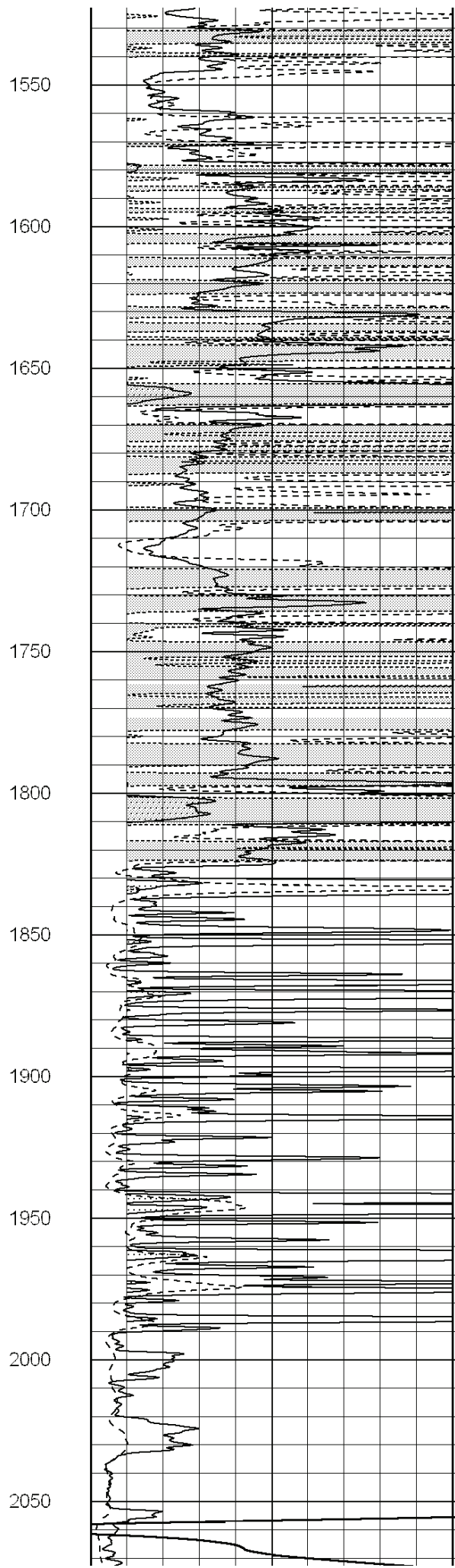
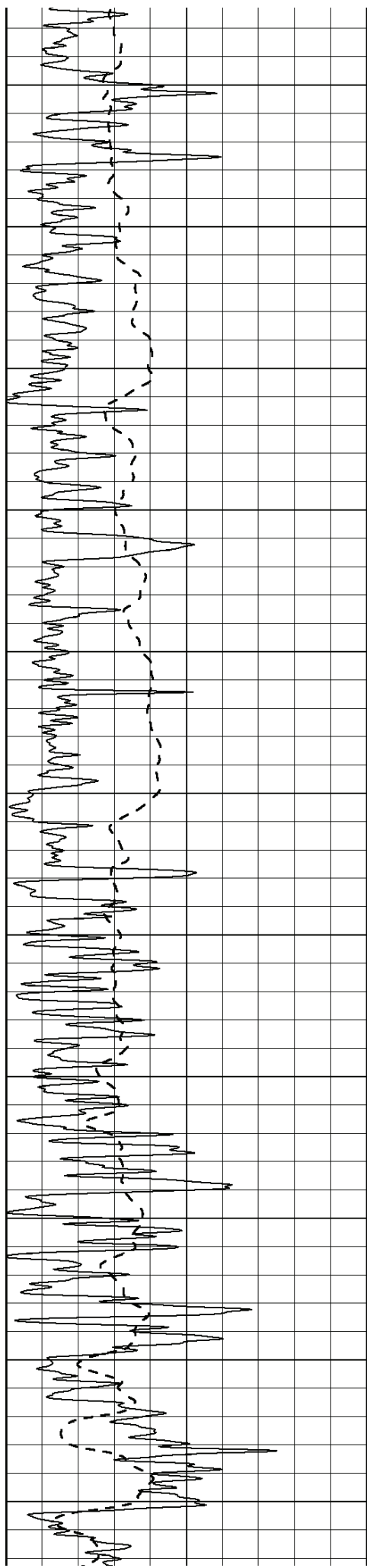


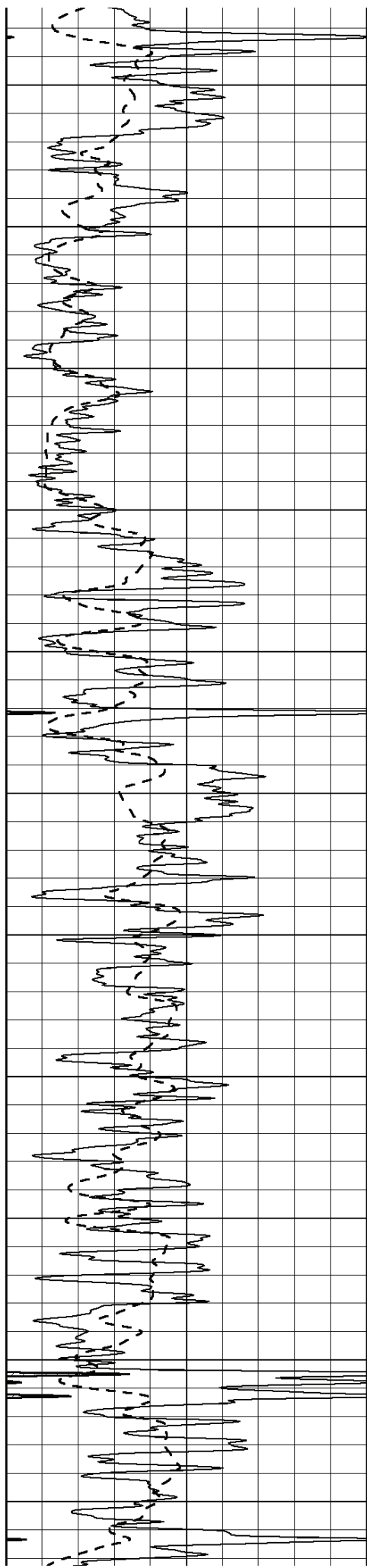




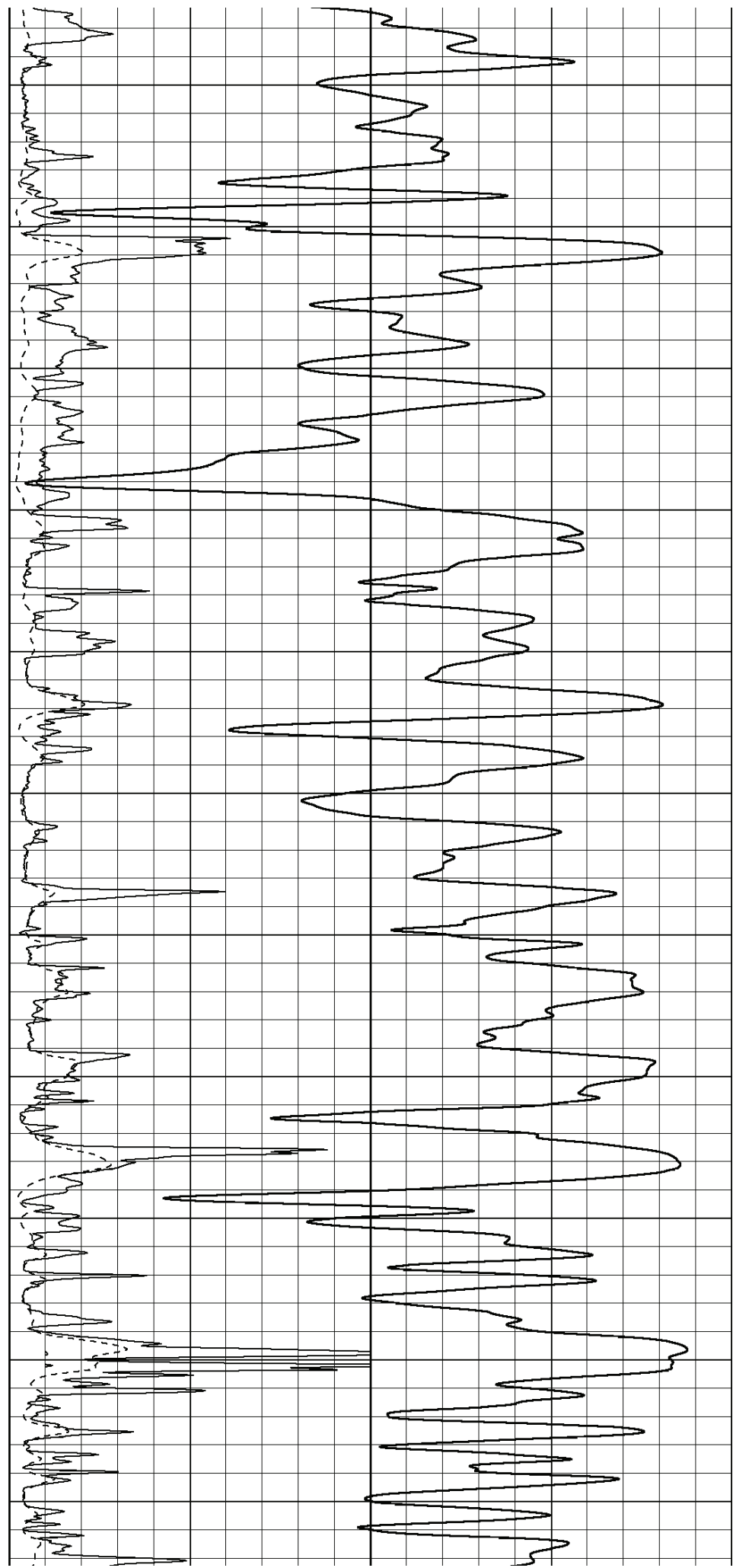
1000  
1050  
1100  
1150  
1200  
1250  
1300  
1350  
1400  
1450  
1500

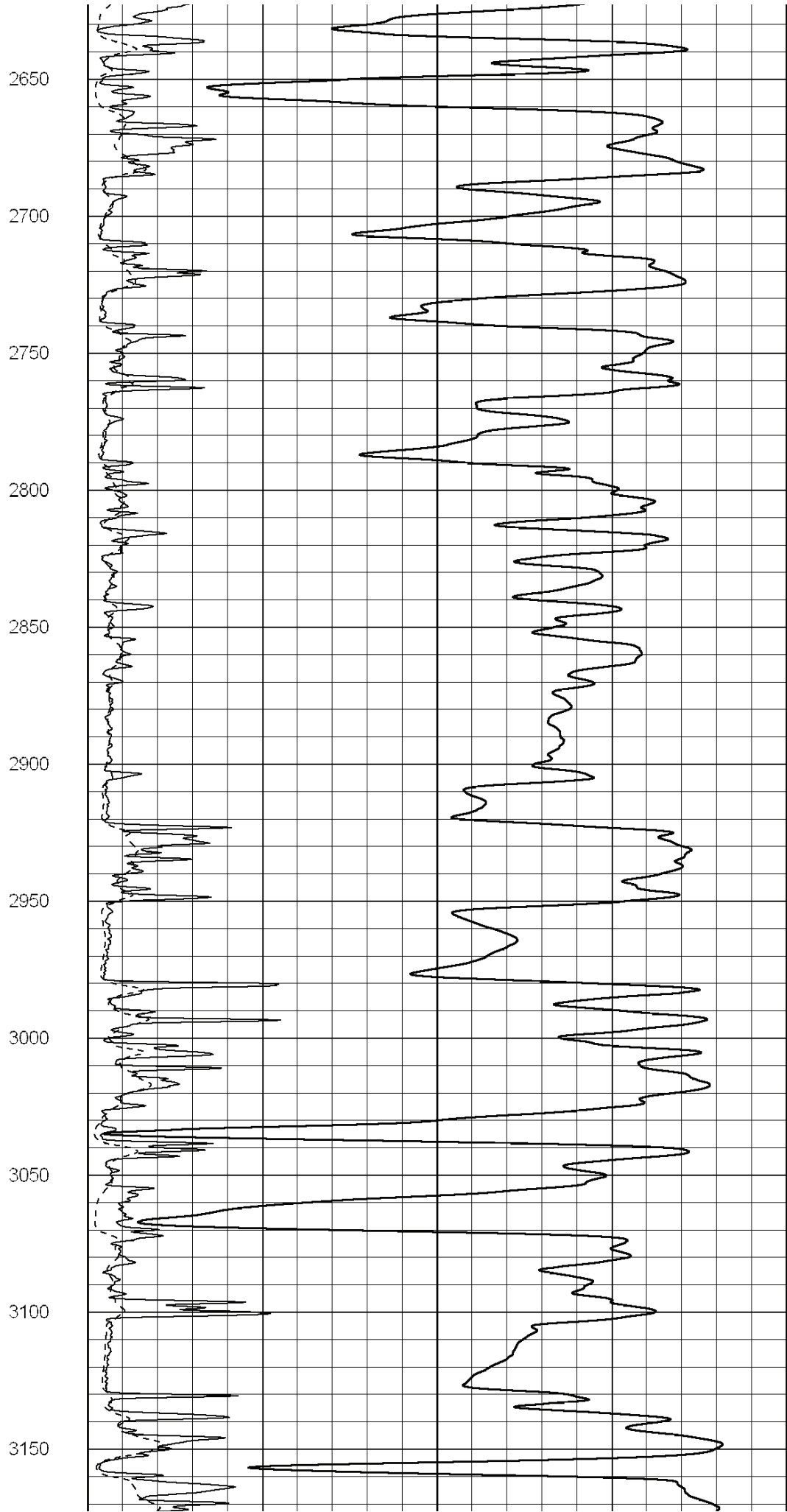
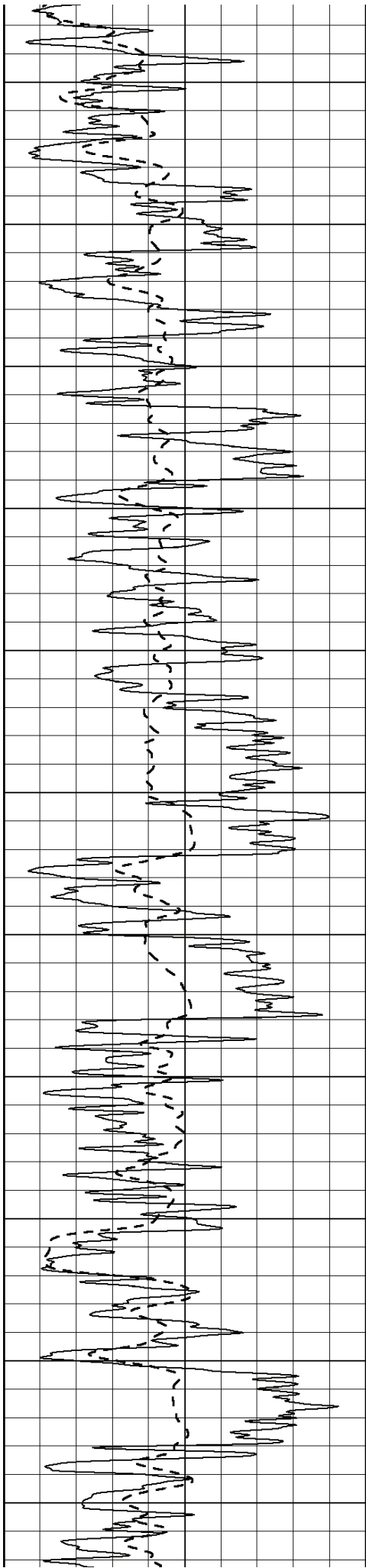


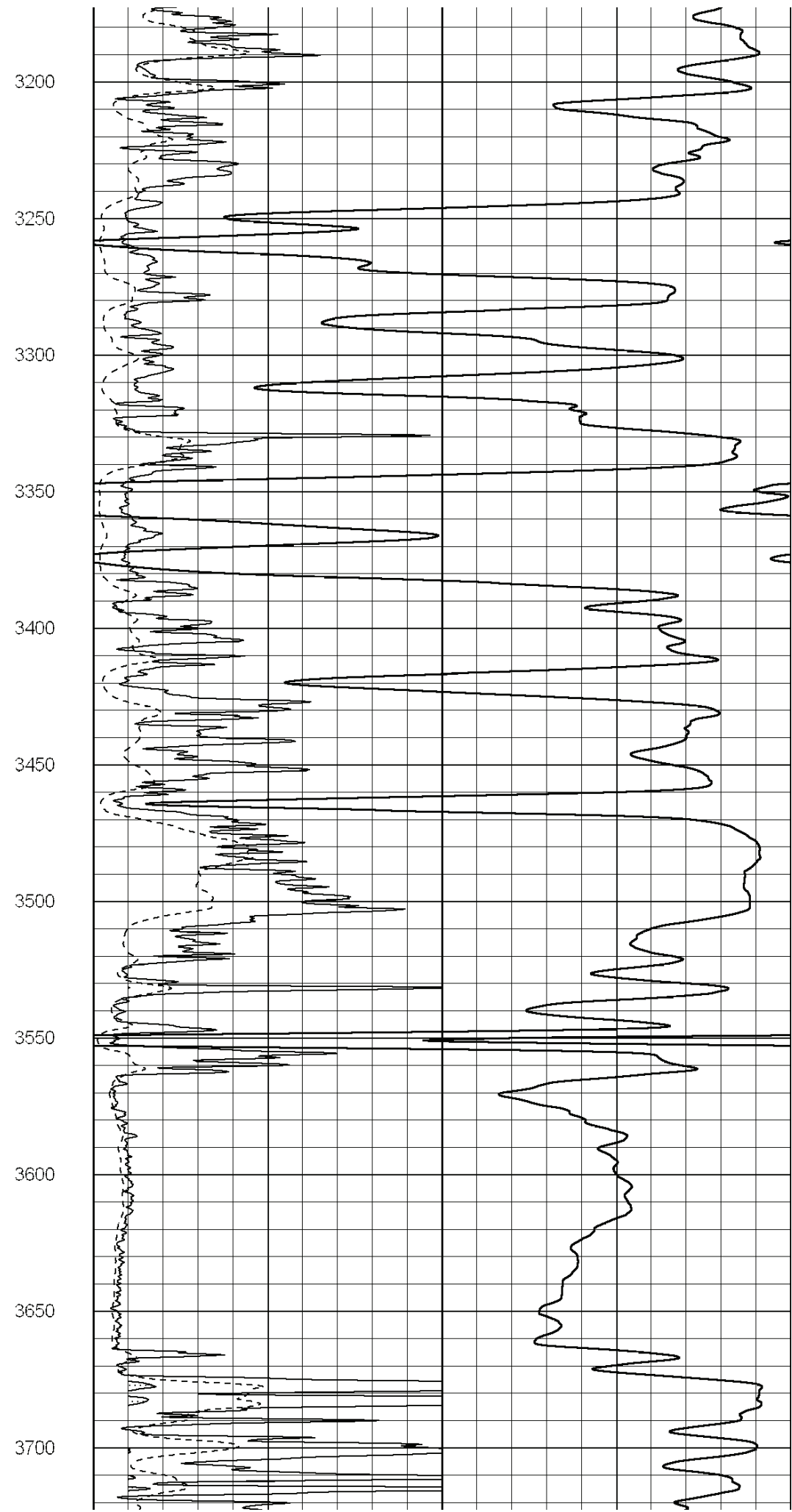
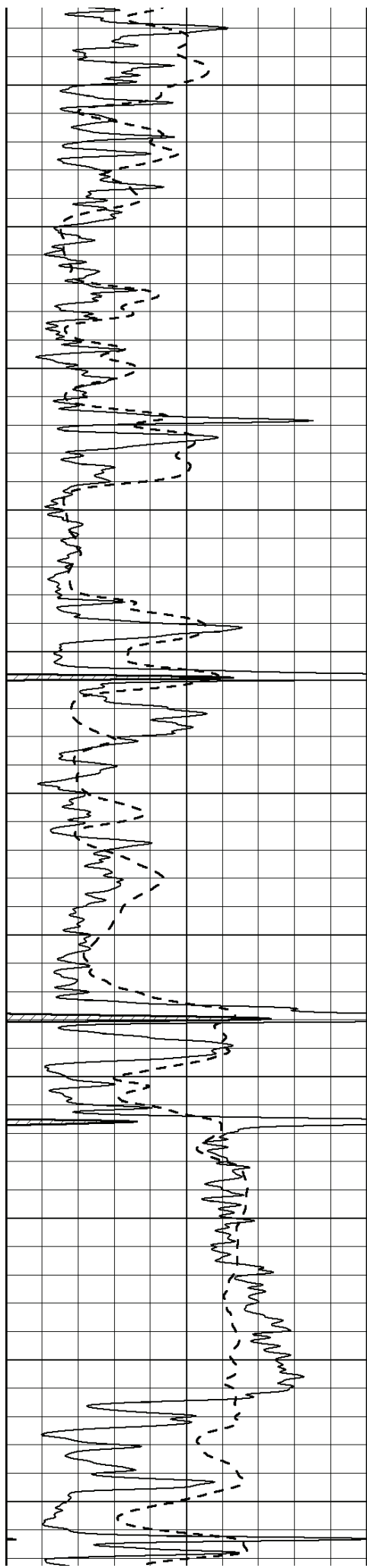


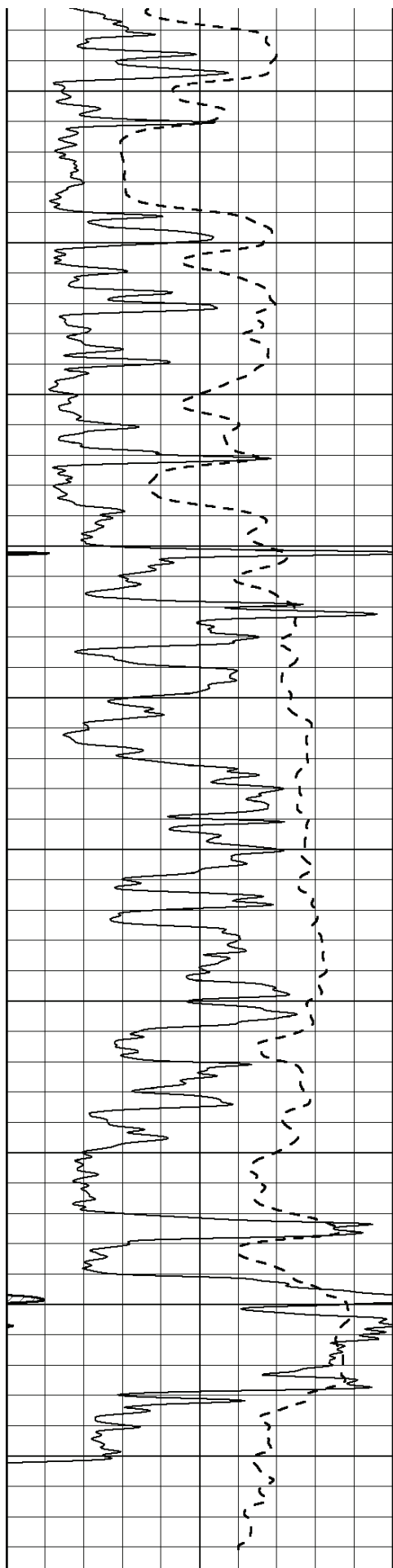


2100  
2150  
2200  
2250  
2300  
2350  
2400  
2450  
2500  
2550  
2600

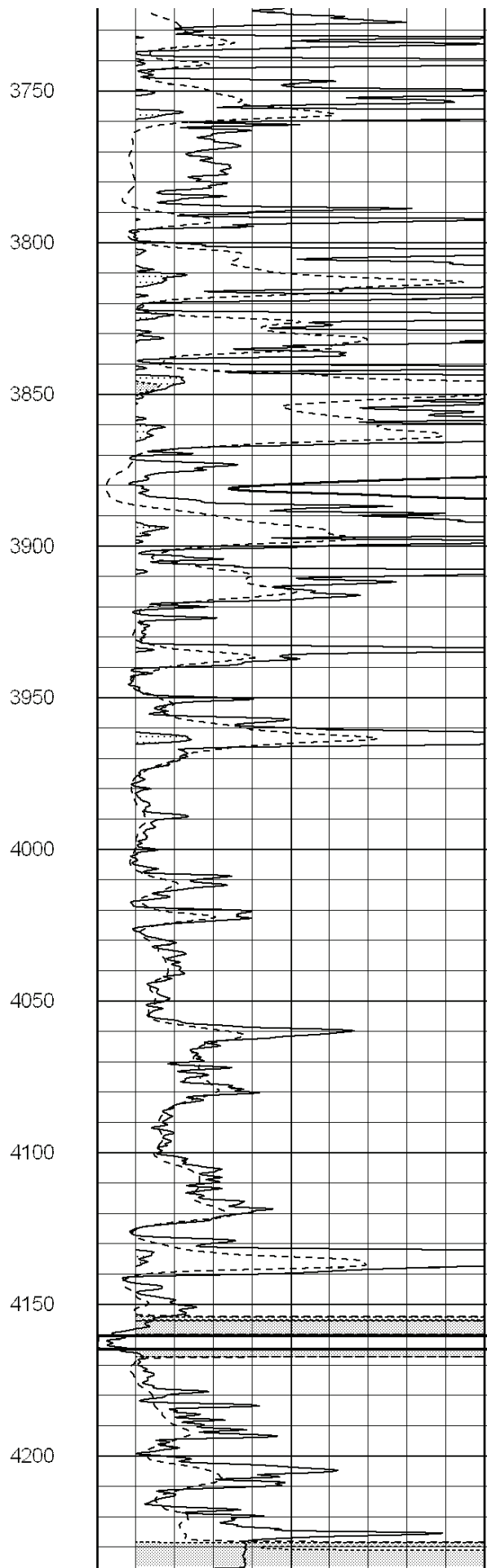




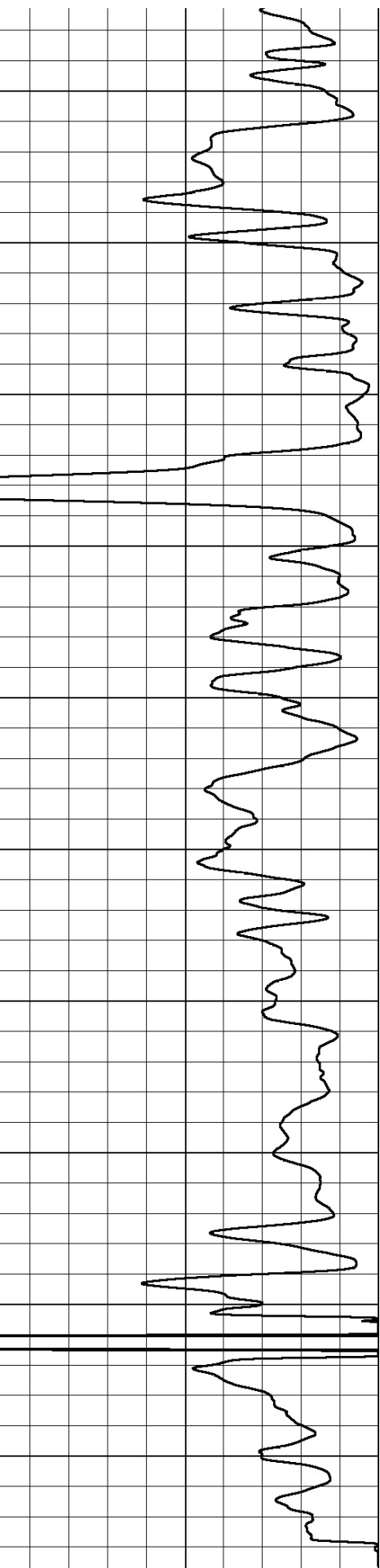




0 Gamma Ray (GAPI) 150  
 -100 SP (mV) 100



0 RLL3 (Ohm-m) 50  
 0 Deep Induction (Ohm-m) 50



1000 CILDA (mmho/m) 0

50	RILD X10 (Ohm-m)	500
50	RLL3 X10 (Ohm-m)	500



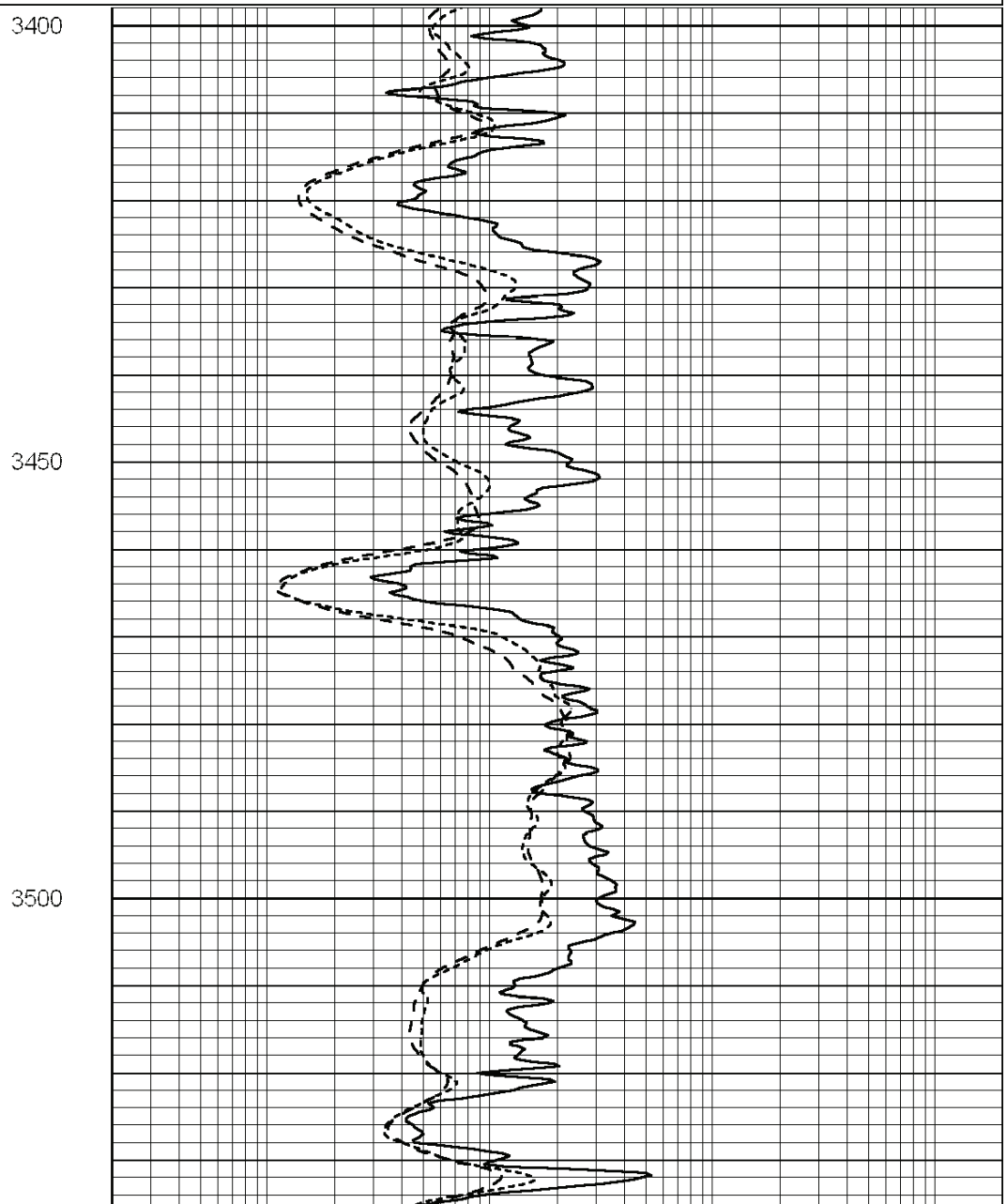
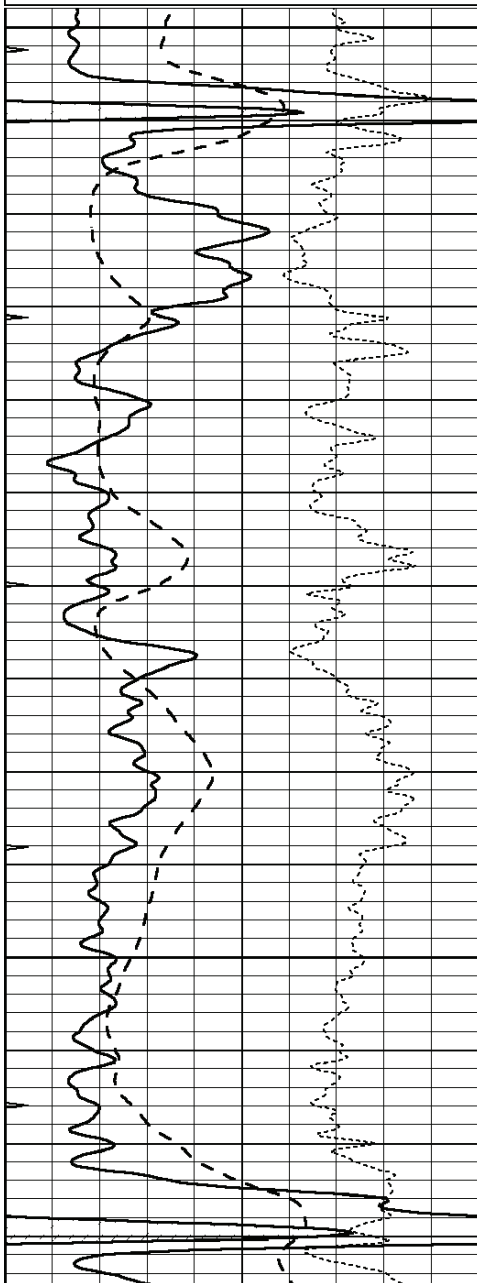
SUPERIOR  
Hays,  
Kansas

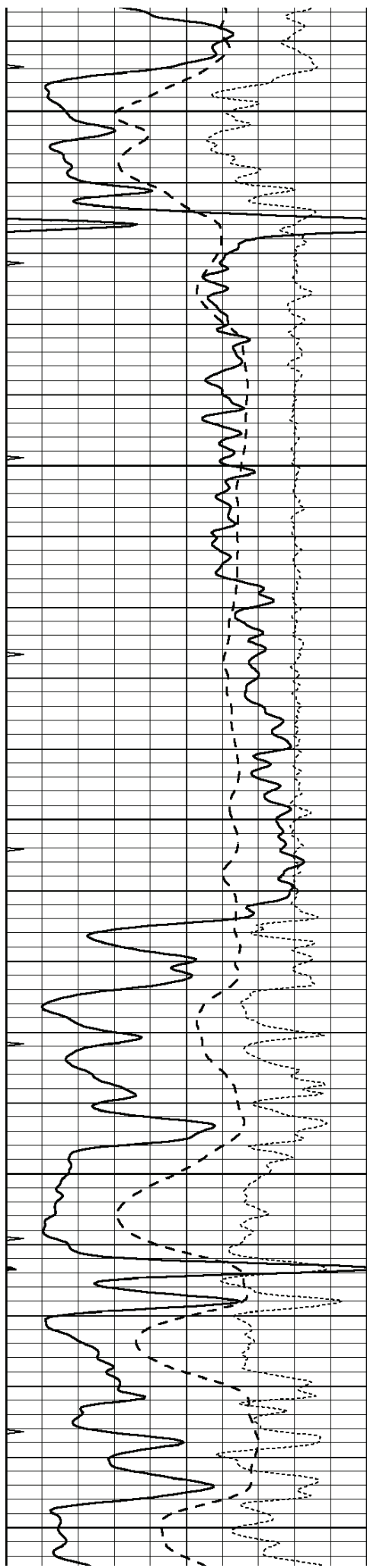
# MAIN SECTION

Database File: 006315ddn.db  
 Dataset Pathname: pass2.A  
 Presentation Format: dil  
 Dataset Creation: Wed Dec 22 08:25:37 2010  
 Charted by: Depth in Feet scaled 1:240

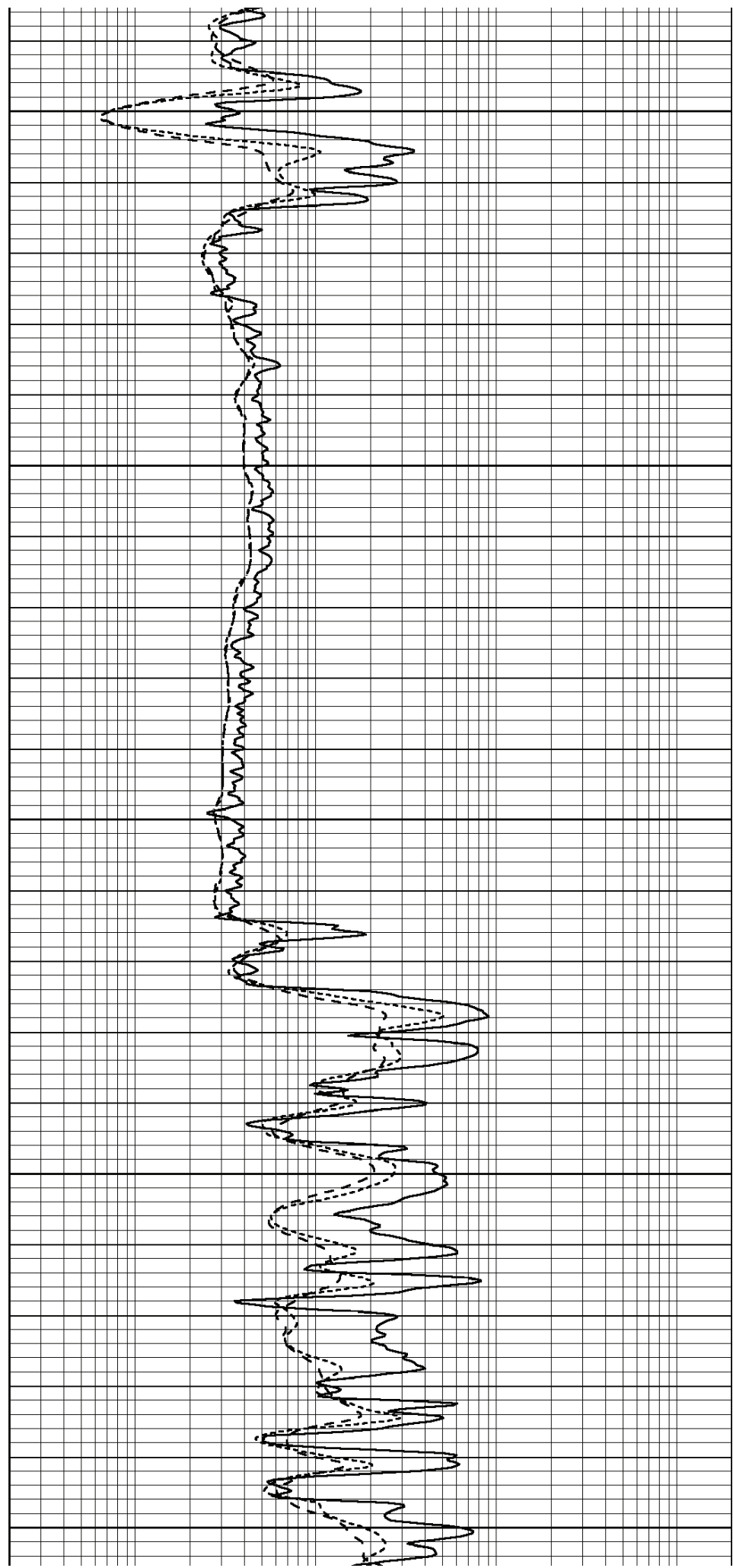
0	GAMMA RAY (GAPI)	150
-100	SP (mV)	100
-250	RxoRt	50
0	MINMK	20

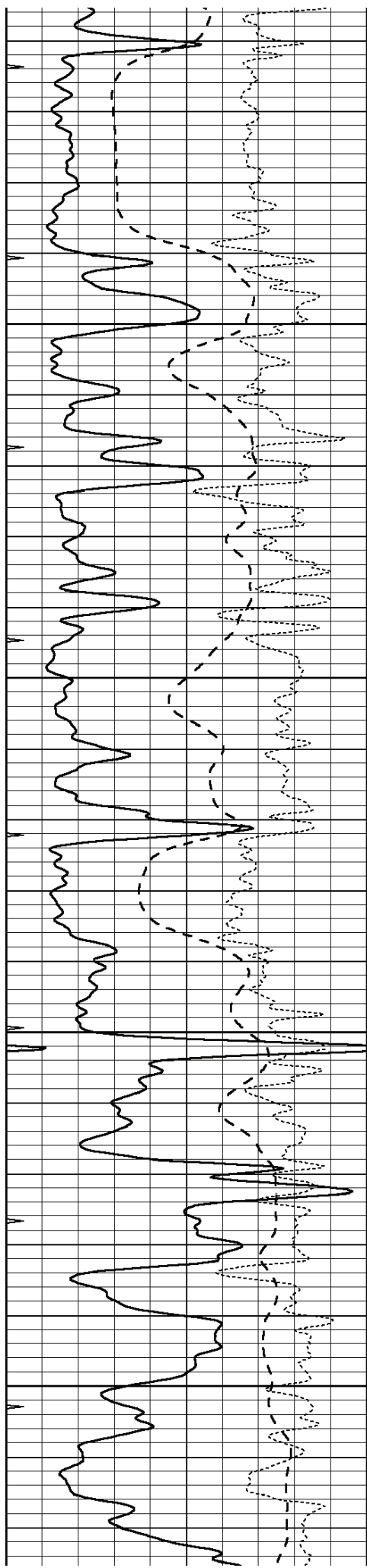
0.2	RLL3 (Ohm-m)	2000
0.2	DEEP INDUCTION (Ohm-m)	2000
0.2	MEDIUM INDUCTION (Ohm-m)	2000





3550  
3600  
3650  
3700  
3750



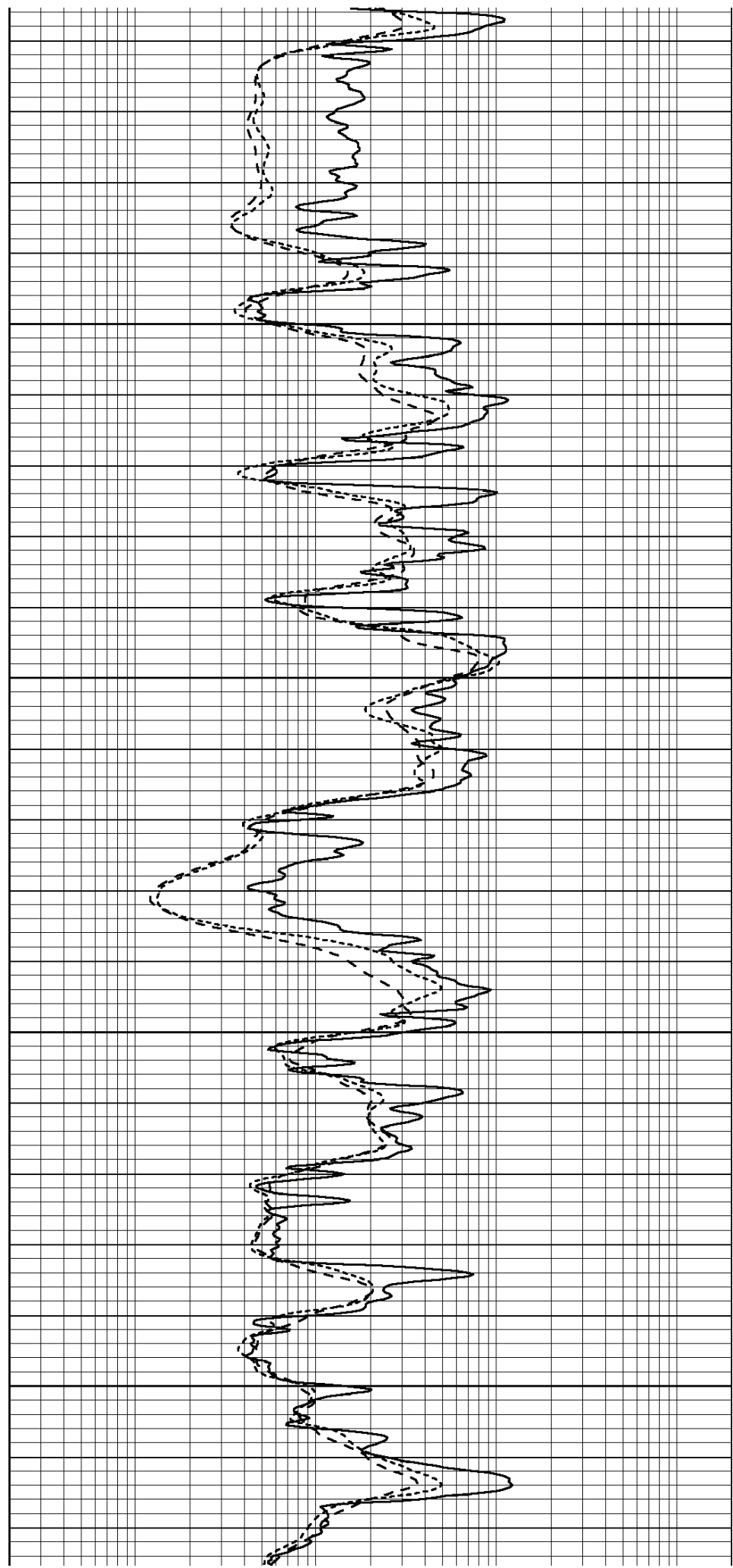


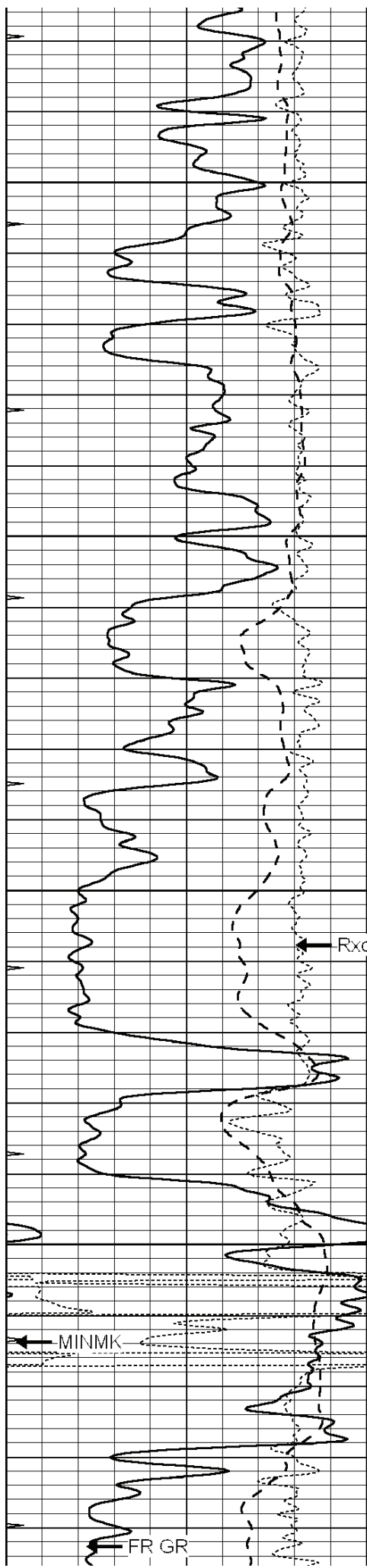
3800

3850

3900

3950



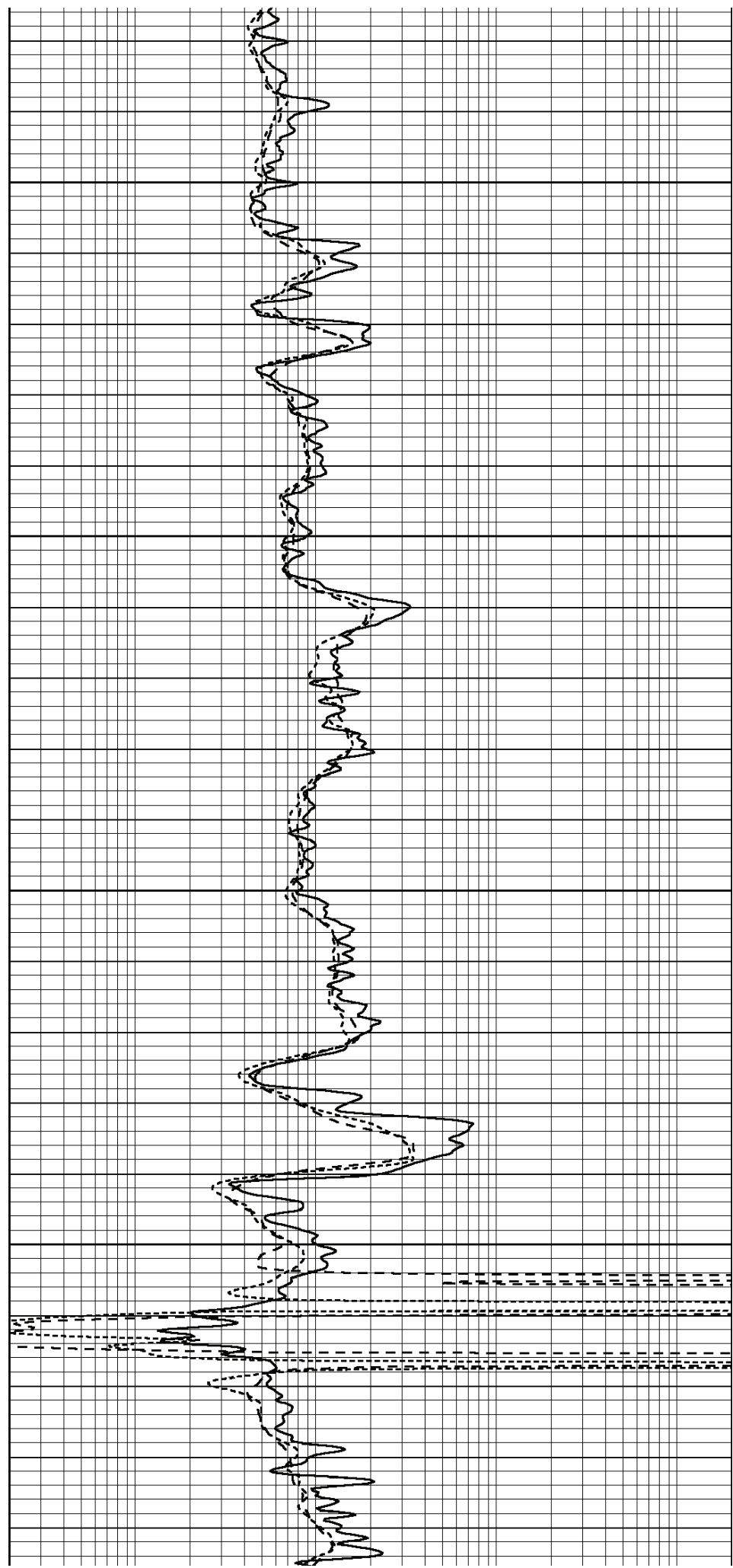


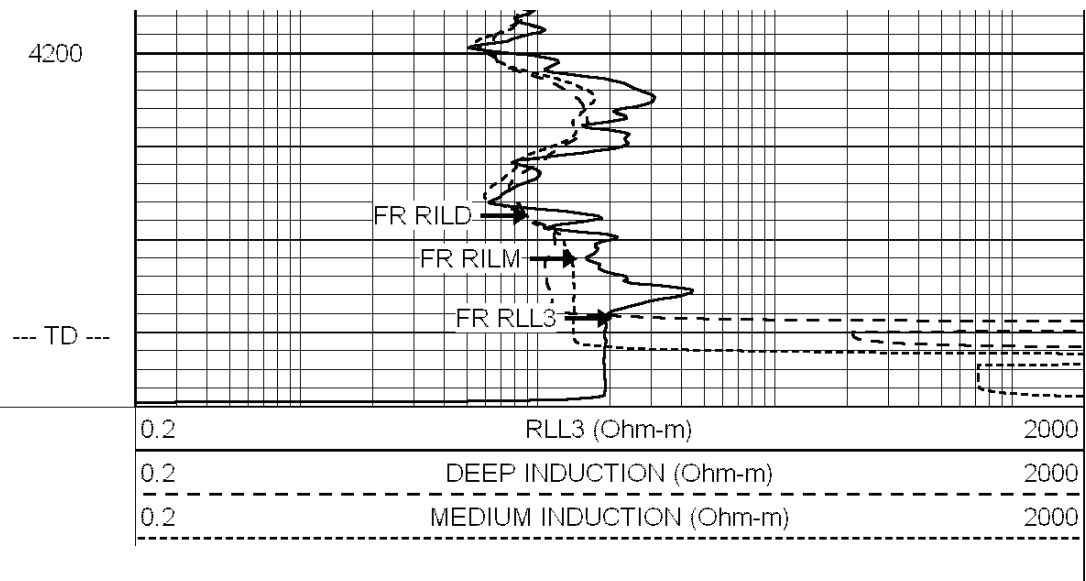
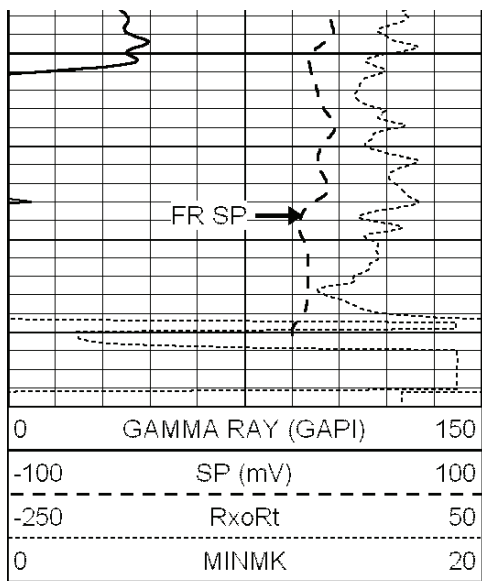
4000

4050

4100

4150





### Calibration Report

Database File: 006315ddn.db  
 Dataset Pathname: pass2.A  
 Dataset Creation: Wed Dec 22 08:25:37 2010

### Dual Induction Calibration Report

Serial-Model: DIL5-GEAR  
 Performed: Wed Dec 22 06:48:39 2010

Loop:	Readings			References			Results	
	Air	Loop		Air	Loop		m	b
Deep	0.004	0.654	V	0.000	400.000	mmho/m	530.000	-10.000
Medium	-0.005	0.737	V	0.000	462.500	mmho/m	520.000	-11.000
Internal:	Zero	Cal		Zero	Cal		m	b
Deep	0.006	0.655	V	0.000	400.000	mmho/m	615.668	-3.483
Medium	0.010	0.747	V	0.000	462.500	mmho/m	627.607	-6.064

### Compensated Density Calibration Report

Serial-Model: GEAR1-GEARHART  
 Source / Verifier: 147 / 147  
 Master Calibration Performed: Wed Dec 22 06:48:09 2010

#### Master Calibration

	Density		Far Detector	Near Detector	
Magnesium	1.710	g/cc	1243.76	629.14	cps
Aluminum	2.600	g/cc	282.16	435.01	cps
Spine Angle = 76.03			Density/Spine Ratio = 0.582		
	Size		Reading		
Small Ring	8.00	in	3.82	V	
Large Ring	14.00	in	6.37	V	

### Compensated Neutron Calibration Report

Serial Number: NEU\_11  
 Tool Model: G

CALIBRATION

Detector	Readings		Target		Normalization
Short Space	1.00	cps	1.00	cps	1.0000
Long Space	1.00	cps	1.00	cps	1.0000

Gamma Ray Calibration Report

Serial Number:	GR5	
Tool Model:	OPEN	
Performed:	Wed Dec 22 06:47:21 2010	
Calibrator Value:	1.0	GAPI
Background Reading:	0.0	cps
Calibrator Reading:	1.0	cps
Sensitivity:	0.6200	GAPI/cps