



**SUPERIOR  
Hays,  
Kansas**

**MICRO  
LOG**

Company	OIL PRODUCERS, INC.	Company	OIL PRODUCERS, INC. OF KANSAS
Well	VOSBURGH #1-2	Well	VOSBURGH #1-2
Field	HEARN	Field	HEARN
County	STAFFORD	County	STAFFORD
State	KANSAS	State	KANSAS
Date	12-22-10	Location:	API # :
Run Number	TWO	Permanent Datum	GROUND LEVEL
Depth Driller	4230	Log Measured From	KELLY BUSHING 5' A.G.L.
Depth Logger	4230	Drilling Measured From	KELLY BUSHING
Bottom Logged Interval	4212	Elevation	2001
Top Log Interval	3400	Other Services	CDL/CNL SONIC/DIL
Casing Driller	268	Elevation	K.B: 2006 D.F. G.L: 2001
Casing Logger	268		
Bit Size	7.875		
Type Fluid in Hole	CHEMICAL MUD		
Density / Viscosity	9.2 / 49		
pH / Fluid Loss	9.5 / 14.8		
Source of Sample	FLOWLINE		
Rim @ Meas. Temp	0.85 @ 70F		
Rimf @ Meas. Temp	0.64 @ 70F		
Rimc @ Meas. Temp	1.02 @ 70F		
Source of Rimf / Rimc	MEASURED		
Rim @ BHT	.510 @ 117F		
Time Circulation Stopped	2 HOURS		
Time Logger on Bottom	5:30 A.M.		
Maximum Recorded Temperature	117F		
Equipment Number	860		
Location	HAYS, KS.		
Recorded By	RUPP		
Witnessed By	DEREK PATTERSON		

<<< Fold Here >>>

All interpretations are opinions based on inferences from electrical or other measurements and we cannot and do not guarantee the accuracy or correctness of any interpretation, and we shall not, except in the case of gross or willful negligence on our part, be liable or responsible for any loss, costs, damages, or expenses incurred or sustained by anyone resulting from any interpretation made by any of our officers, agents or employees. These interpretations are also subject to our general terms and conditions set out in our current Price Schedule.

Comments

SUPERIOR WELL SERVICES  
785-628-6395  
THANK YOU FOR YOUR BUSINESS  
DIRECTIONS: jCT #281 & #50, 7W, 2N, 3W, 1/2W, S INTO.



**SUPERIOR  
Hays,  
Kansas**

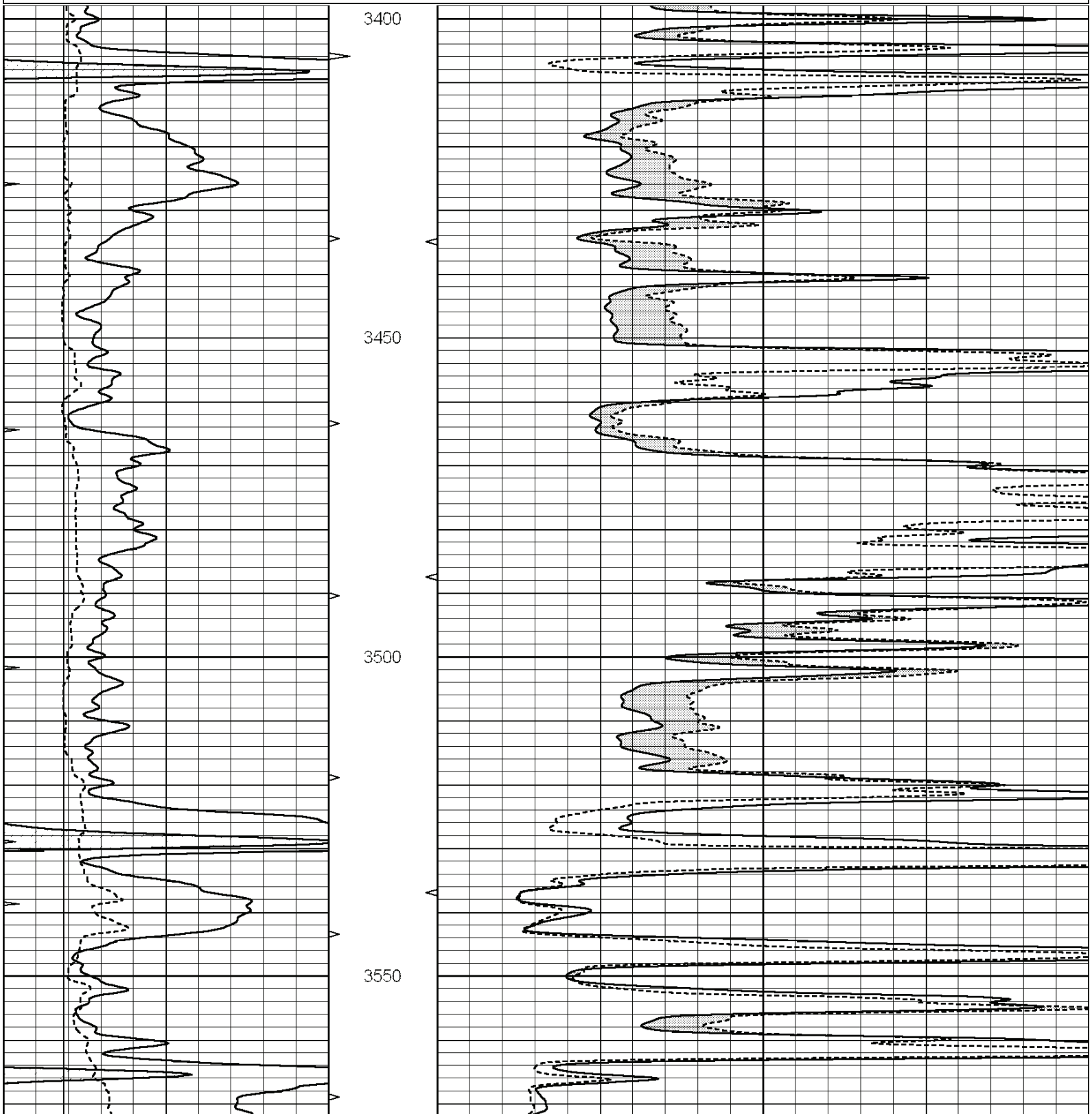
**MAIN SECTION**

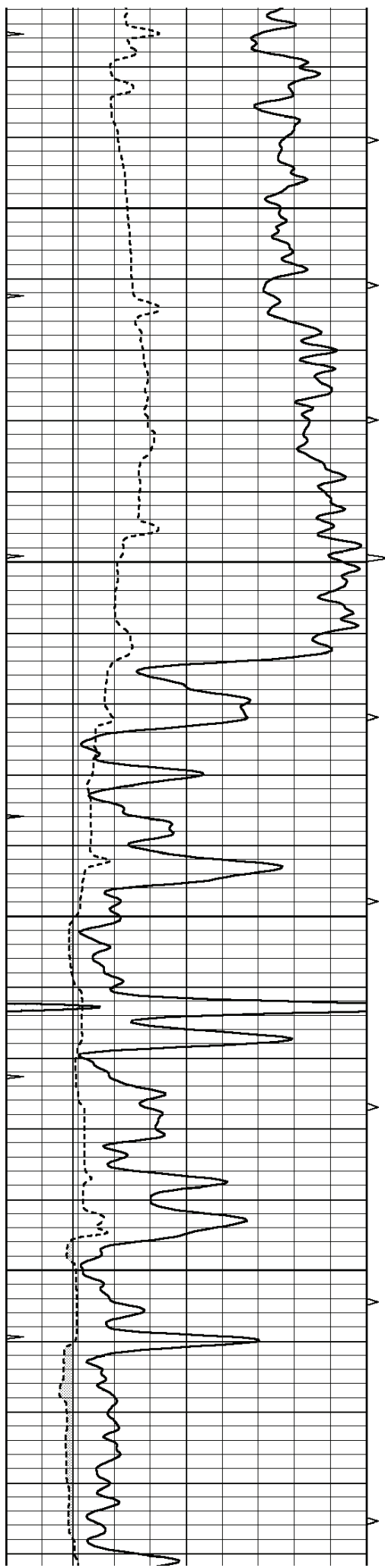


Database File: 006315ddn.db  
Dataset Pathname: pass3.1  
Presentation Format: micro  
Dataset Creation: Wed Dec 22 10:04:30 2010 by Calc Open-Cased 090629  
Charted by: Depth in Feet scaled 1:240

0	GAMMA RAY (GAPI)	150
6	CALIPER (in)	16
0	MINMK	20

0	MEL1.5 (Ohm-m)	20
0	MEL2.0 (Ohm-m)	20



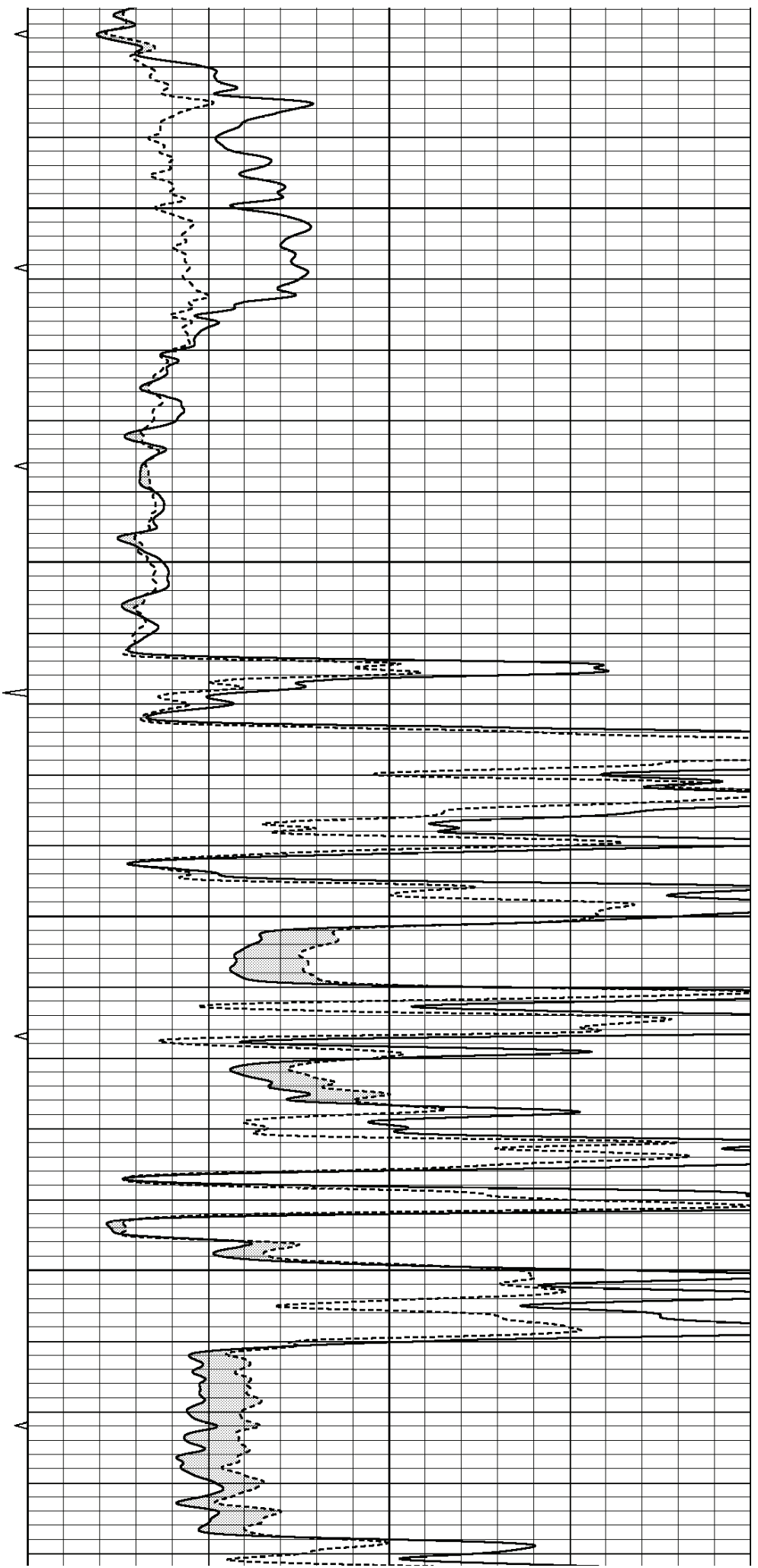


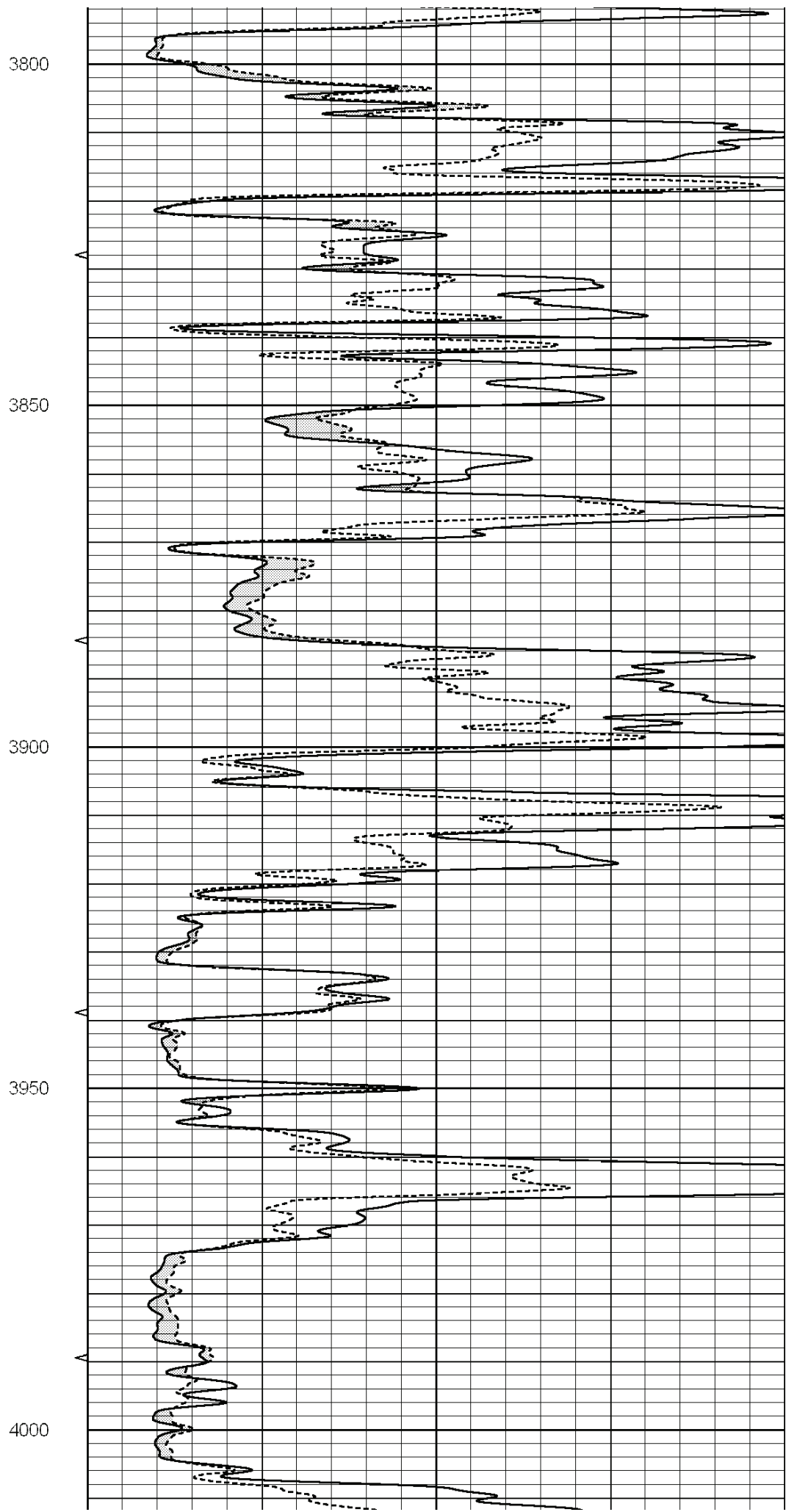
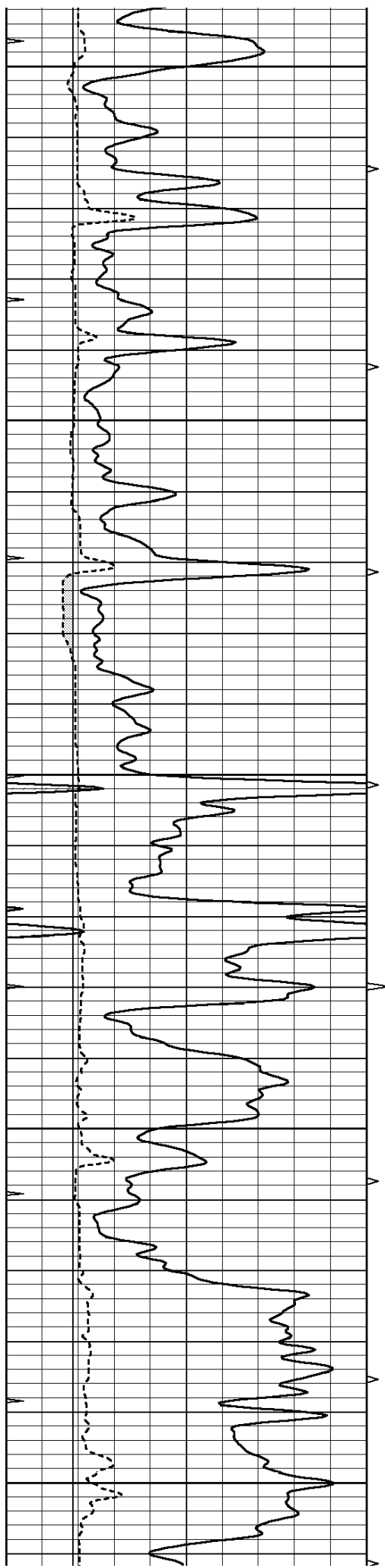
3600

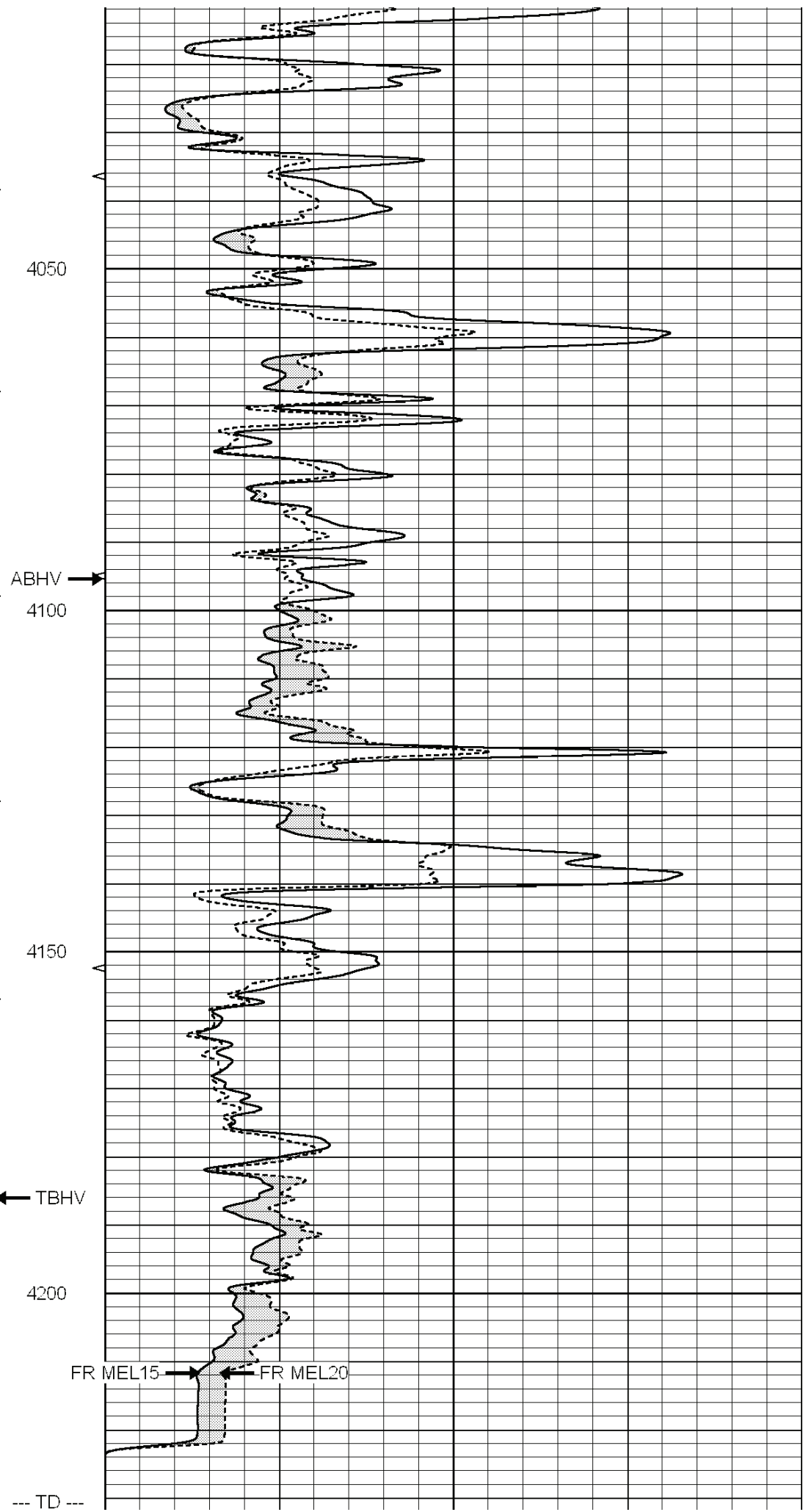
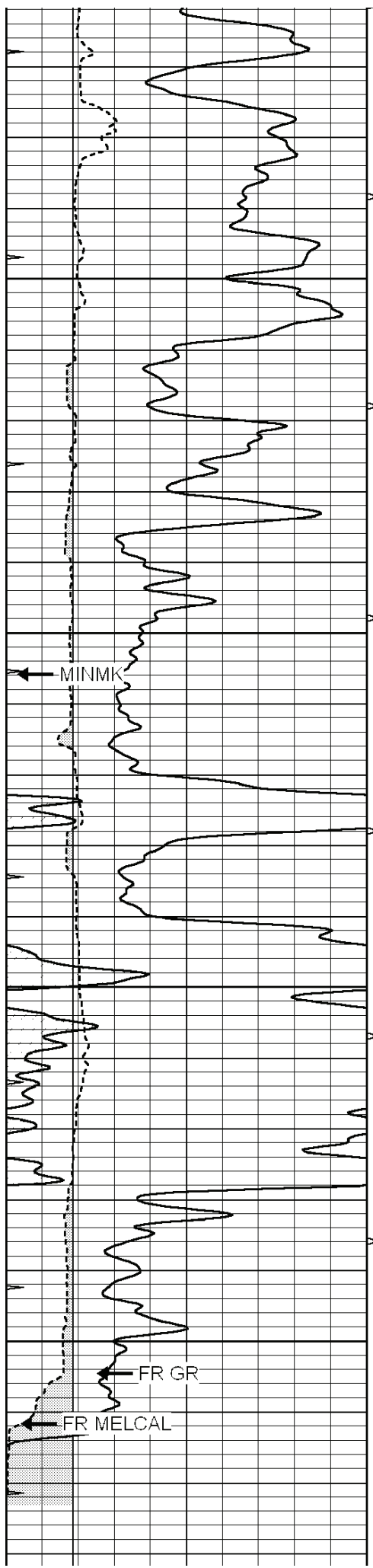
3650

3700

3750







0	GAMMA RAY (GAPI)	150
6	CALIPER (in)	16
0	MINMK	20

0	MEL1.5 (Ohm-m)	20
0	MEL2.0 (Ohm-m)	20

Calibration Report

Database File: 006315ddn.db  
 Dataset Pathname: pass3.1  
 Dataset Creation: Wed Dec 22 10:04:30 2010 by Calc Open-Cased 090629

MICRO Calibration Report

Serial Number: Micro1  
 Tool Model: ProbeL  
 Performed: Wed Dec 22 08:38:49 2010

Caliper Calibration: Gain=3.088      Offset=0.368

References	Low Cal	High Cal
Readings	7.400	14.000
	2.277	4.415

1.5" Calibration: Gain=42.000      Offset=0.000

References	Low Cal	High Cal
Readings	0.000	20.000
	0.003	0.844

2" Calibration: Gain=35.000      Offset=0.000

References	Low Cal	High Cal
Readings	0.000	20.000
	0.028	0.817

Gamma Ray Calibration Report

Serial Number: GR5  
 Tool Model: OPEN  
 Performed: Wed Dec 22 09:19:22 2010

Calibrator Value: 1.0      GAPI

Background Reading: 0.0      cps  
 Calibrator Reading: 1.0      cps

Sensitivity: 0.6500      GAPI/cps