

**SUPERIOR
Hays,
Kansas**

**RADIATION
GUARD LOG**

Company JASON OIL COMPANY, INC.
Well WIRTH #6
Field KRAFT - PRUSA
County BARTON State KANSAS

Company JASON OIL COMPANY, INC.
Well WIRTH #6
Field KRAFT - PRUSA
County BARTON
State KANSAS

Location: API #: 15-009-25538
900' FSL & 2310' FWL
SEC 8 TWP 16S RGE 11W
Permanent Datum GROUND LEVEL Elevation 1822
Log Measured From KELLY BUSHING 7' A.G.L.
Drilling Measured From KELLY BUSHING
Other Services
MICRO
Elevation
K.B. 1829
D.F.
G.L. 1822

Date	4-13-11
Run Number	ONE
Depth Driller	3310
Depth Logger	3309
Bottom Logged Interval	3308
Top Log Interval	00
Casing Driller	397
Casing Logger	395
Bit Size	7.875
Type Fluid in Hole	CHEMICAL MUD
Density / Viscosity	8.9 / 61
pH / Fluid Loss	8.0 / 10.4
Source of Sample	FLOWLINE
Rm @ Meas. Temp	0.55 @ 84F
Rmf @ Meas. Temp	0.41 @ 84F
Rmc @ Meas. Temp	0.66 @ 84F
Source of Rmf / Rmc	MEASURED
Rm @ BHT	.430 @ 108F
Time Circulation Stopped	2 HOURS
Time Logger on Bottom	2:00 P.M.
Maximum Recorded Temperature	108F
Equipment Number	860
Location	HAYS, KS.
Recorded By	RUPP
Witnessed By	HERB DEINES

<<< Fold Here >>>

All interpretations are opinions based on inferences from electrical or other measurements and we cannot and do not guarantee the accuracy or correctness of any interpretation, and we shall not, except in the case of gross or willful negligence on our part, be liable or responsible for any loss, costs, damages, or expenses incurred or sustained by anyone resulting from any interpretation made by any of our officers, agents or employees. These interpretations are also subject to our general terms and conditions set out in our current Price Schedule.

Comments

SUPERIOR WELL SERVICES
785-628-6395
THANK YOU FOR YOUR BUSINESS
DIRECTIONS: DUBUQUE CHURCH, 2E, 2S, 1/4E, N INTO.

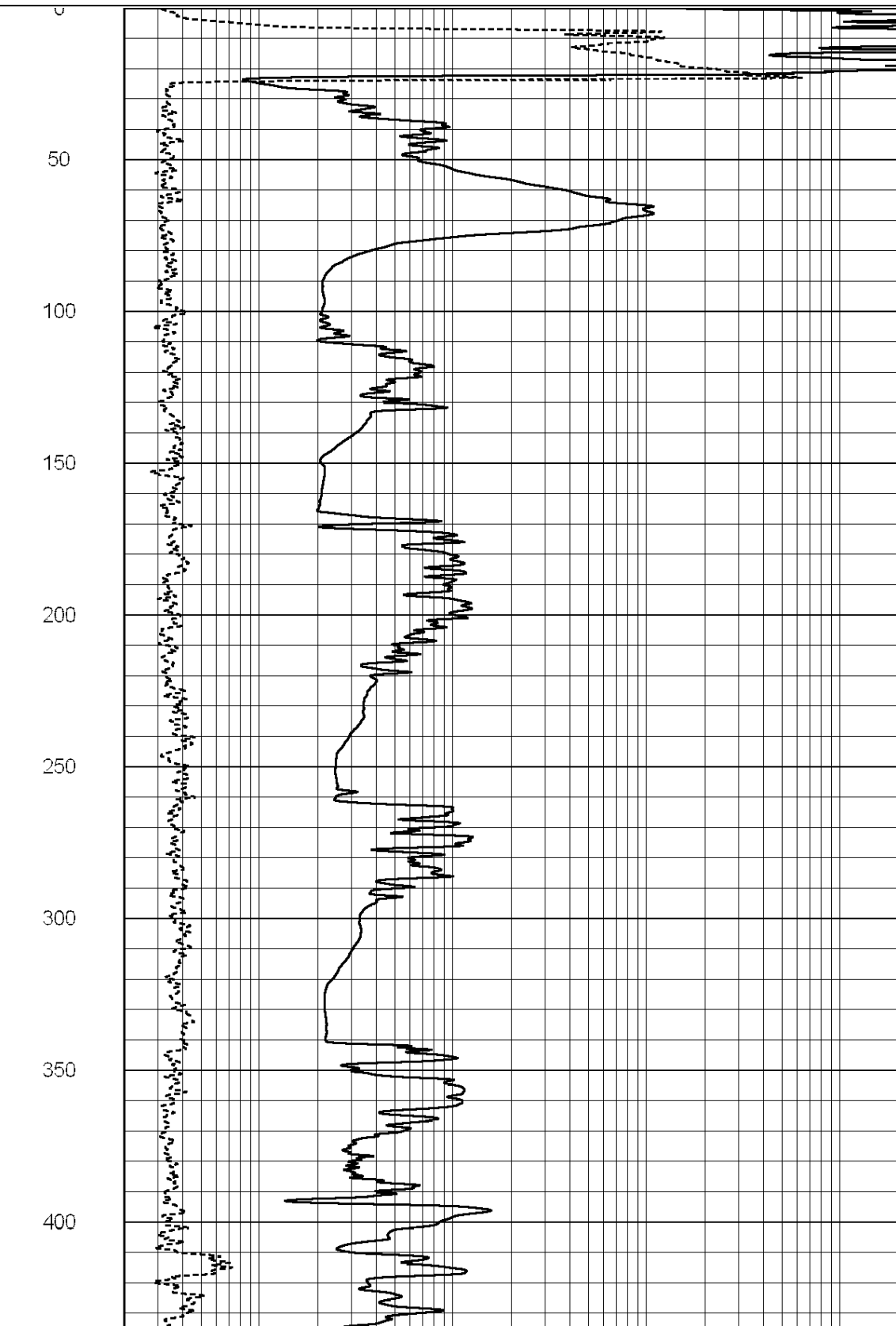
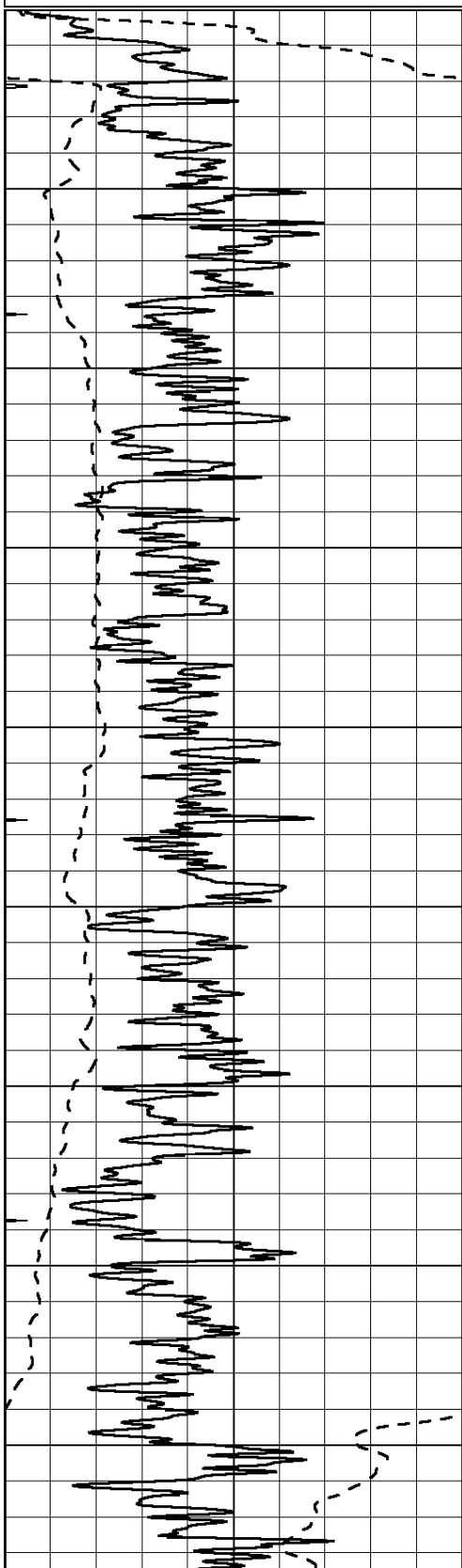


**SUPERIOR
Hays,
Kansas**

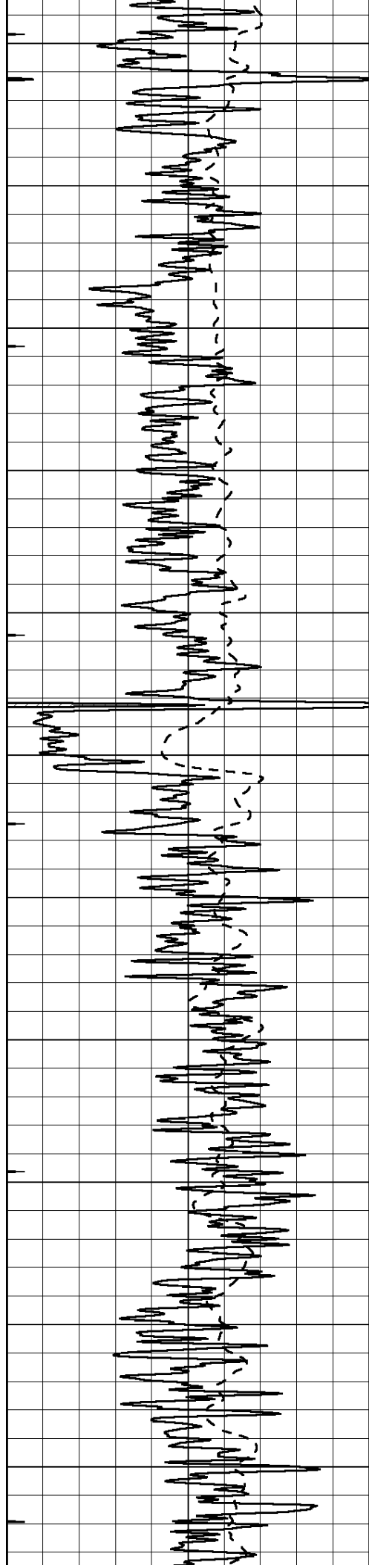
MAIN SECTION

Database File: 006902rag.db
 Dataset Pathname: pass3.1
 Presentation Format: rag2
 Dataset Creation: Wed Apr 13 15:16:55 2011 by Calc Open-Cased 090629
 Charted by: Depth in Feet scaled 1:600

0	GAMMA RAY (GAPI)	150	ABHV (ft3)	0.2	GUARD (Ohm-m)	2000
-100	SP (mV)	100		0	NEUTRON (NAPI)	1000
-----			TBHV (ft3)	-----		



0
50
100
150
200
250
300
350
400



450

500

550

600

650

700

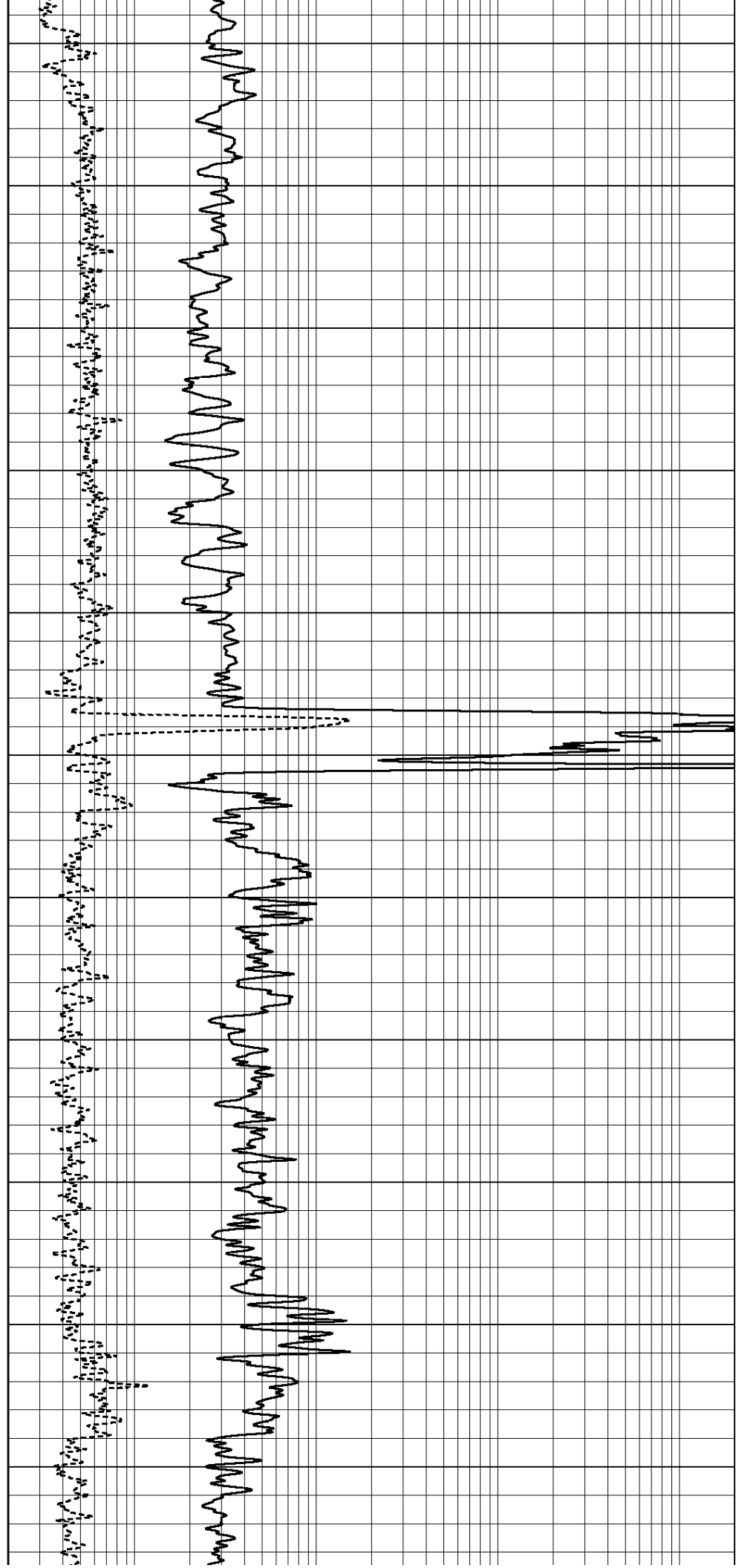
750

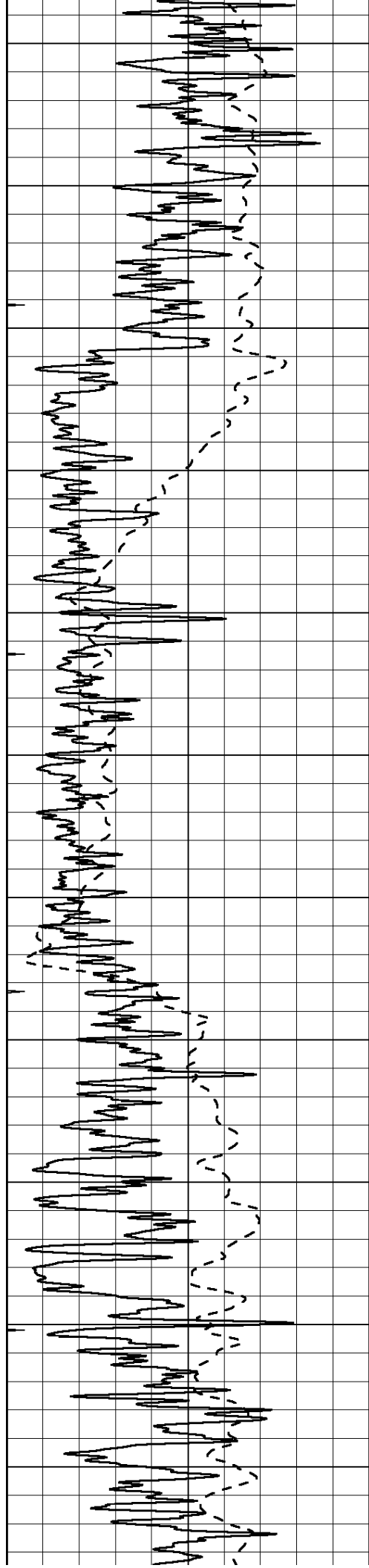
800

850

900

950





1000

1050

1100

1150

1200

1250

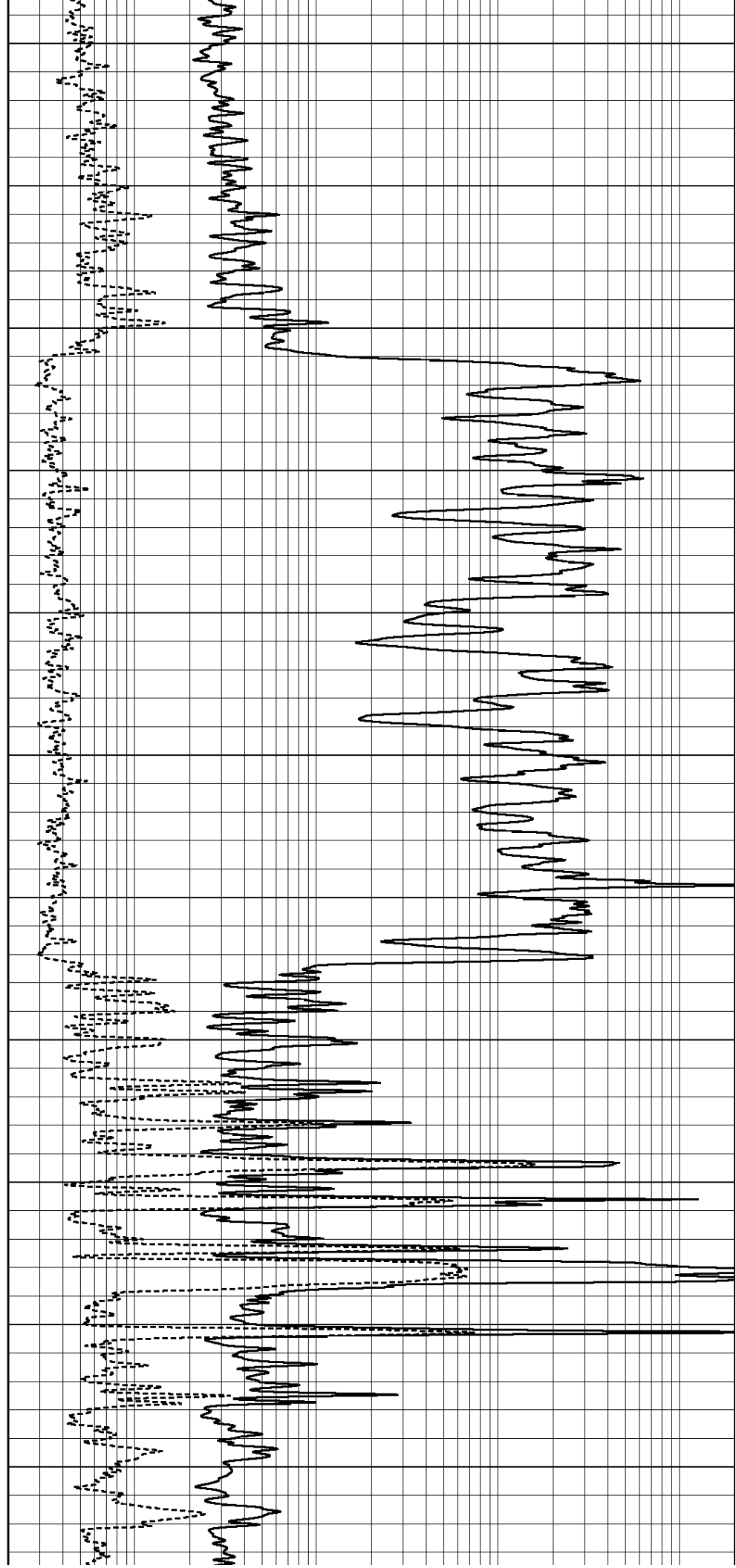
1300

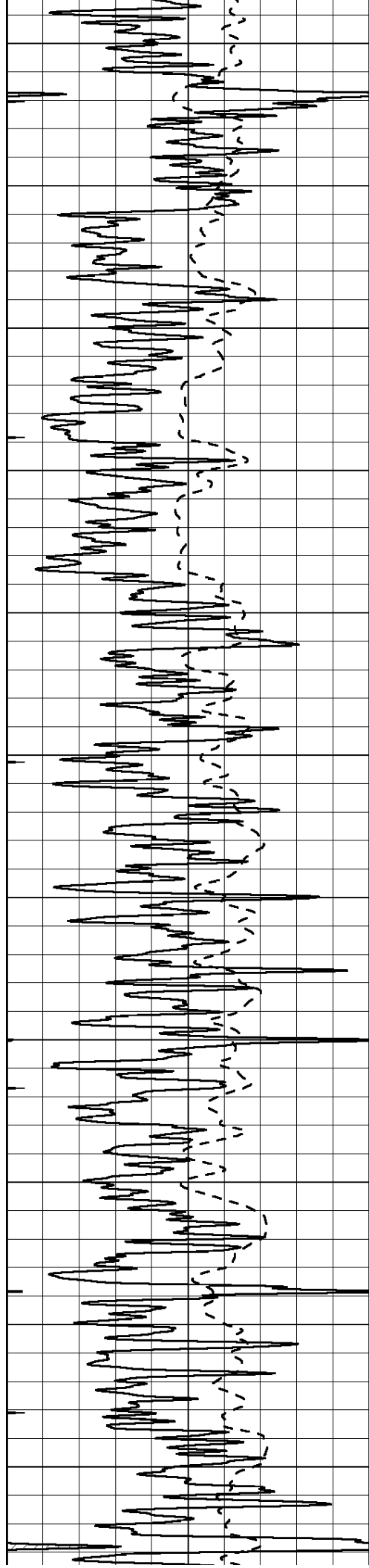
1350

1400

1450

1500





1550

1600

1650

1700

1750

1800

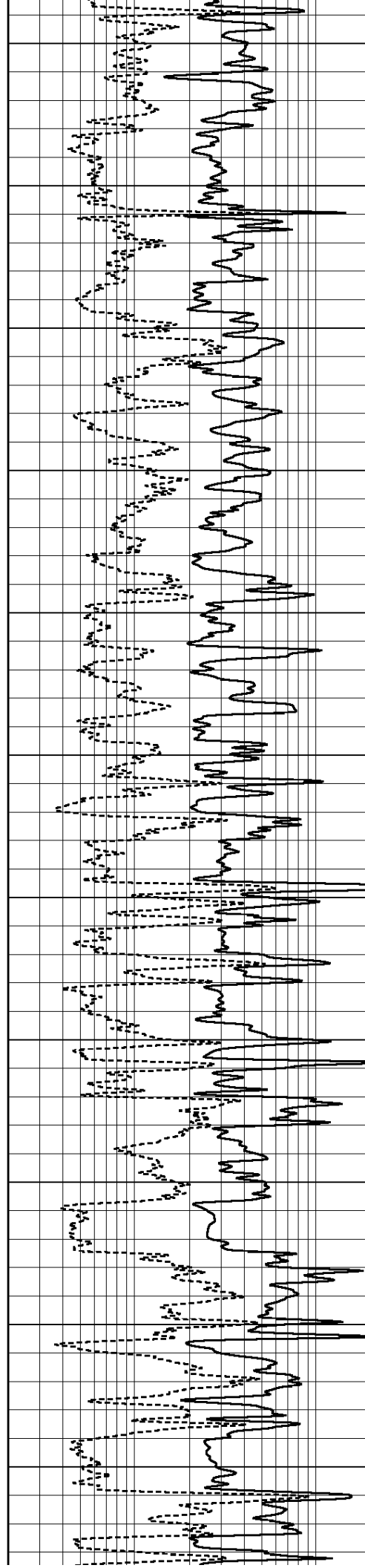
1850

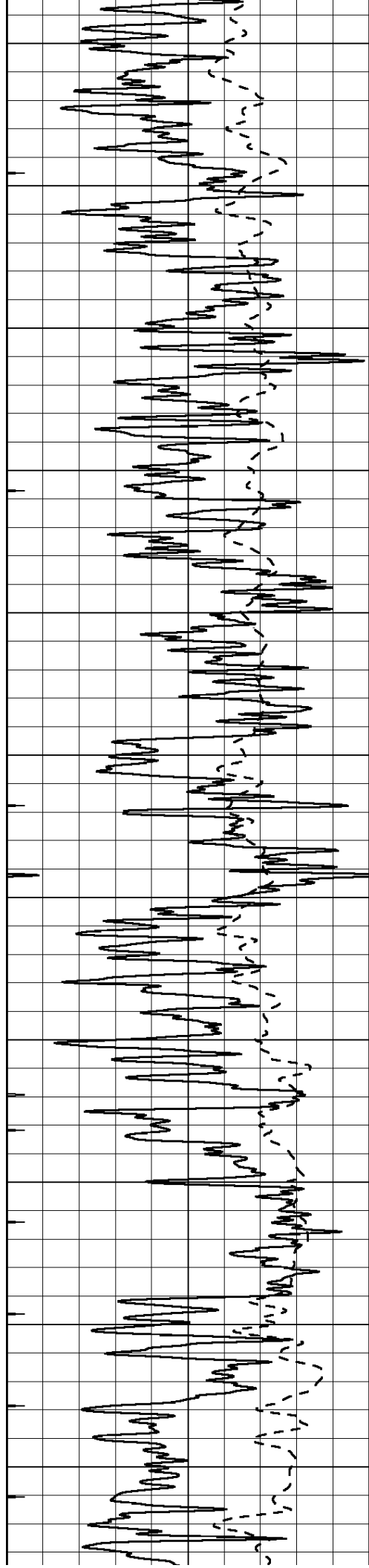
1900

1950

2000

2050





2100

2150

2200

2250

2300

2350

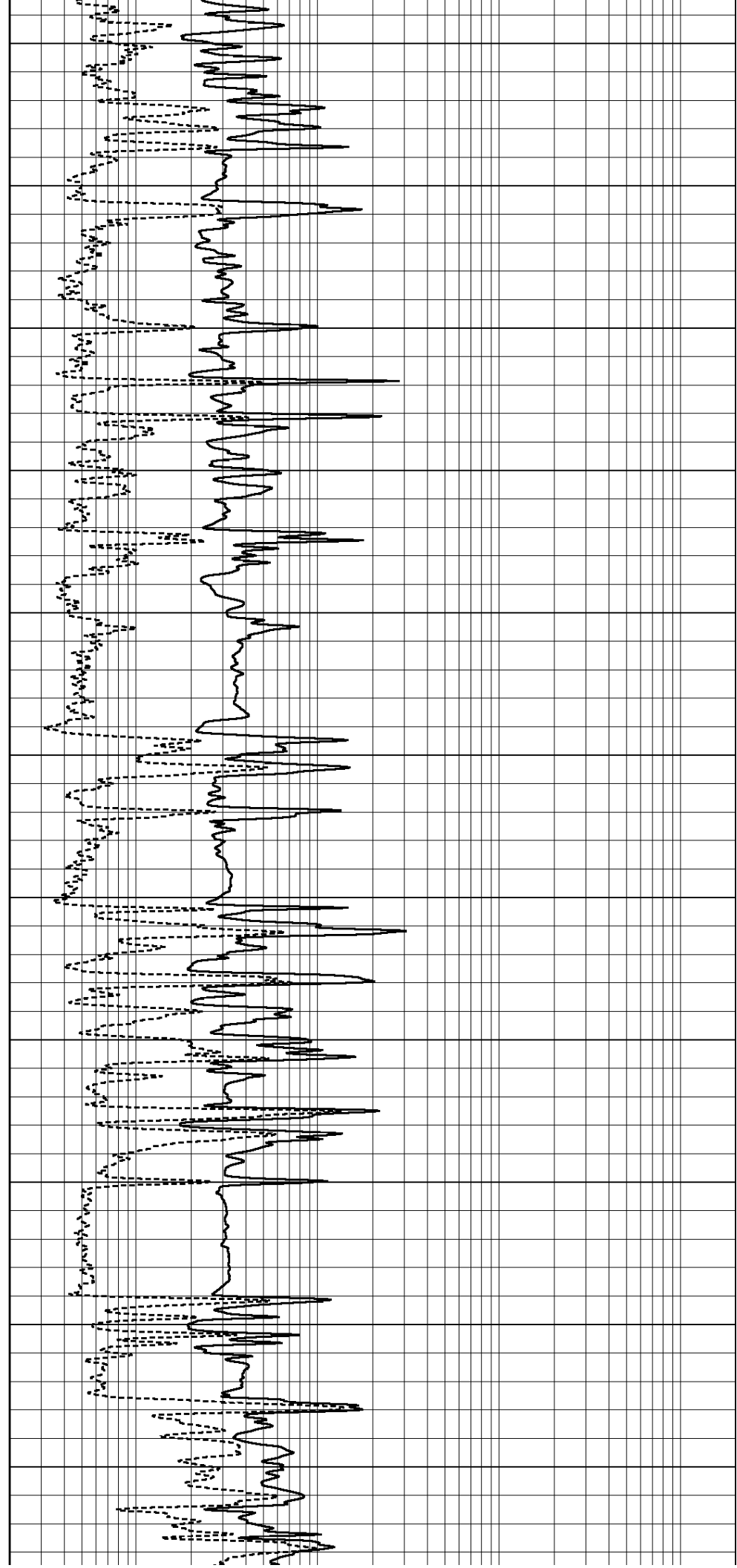
2400

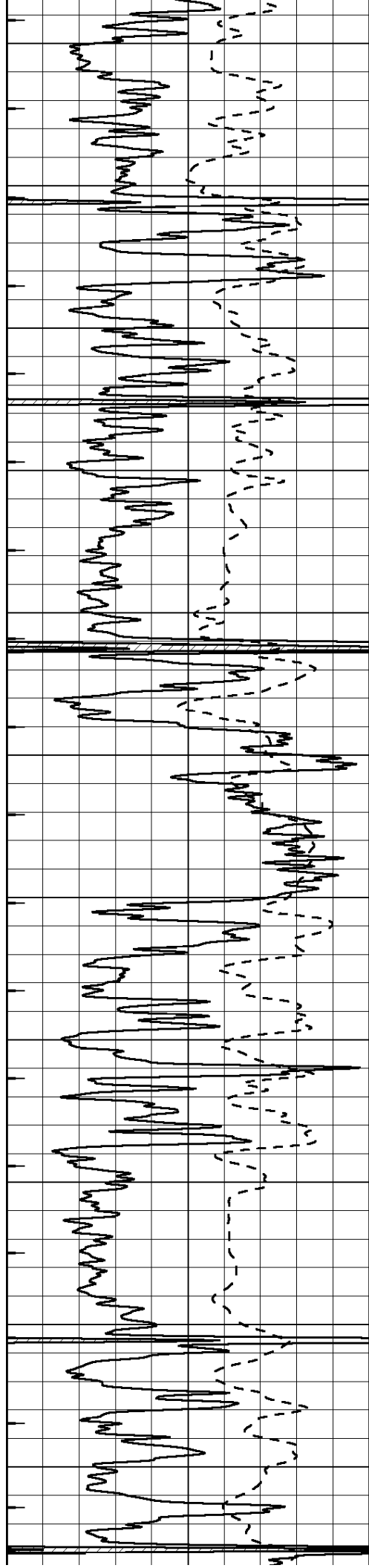
2450

2500

2550

2600





2650

2700

2750

2800

2850

2900

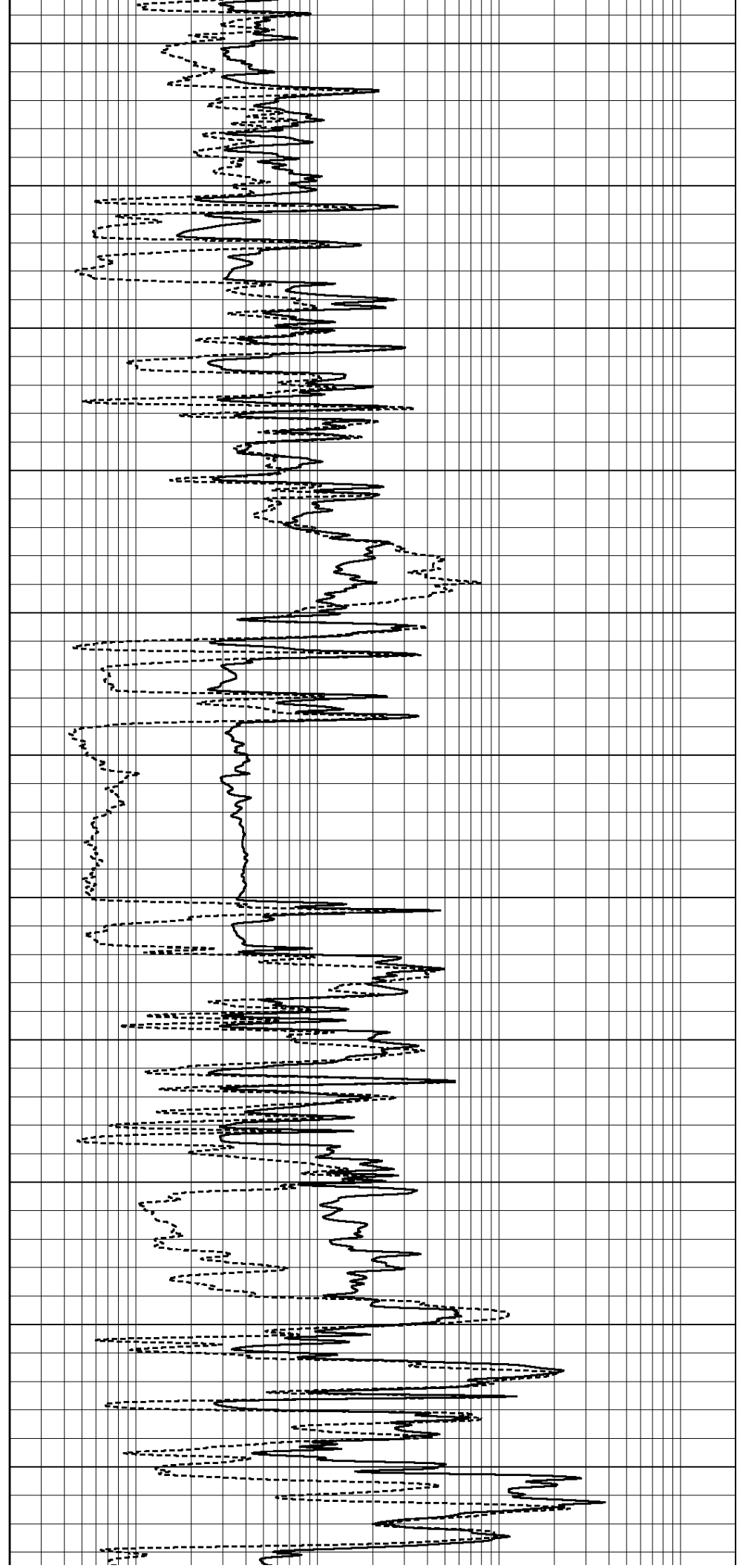
2950

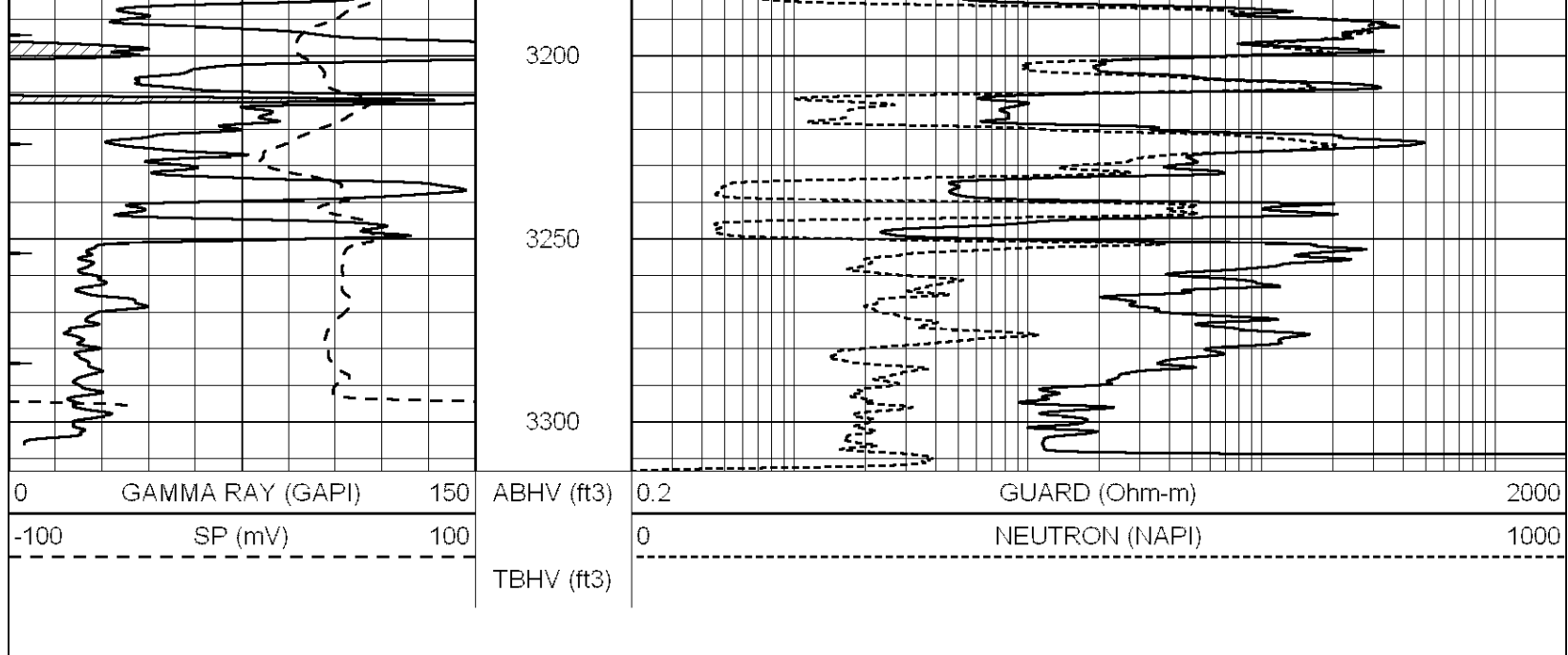
3000

3050

3100

3150

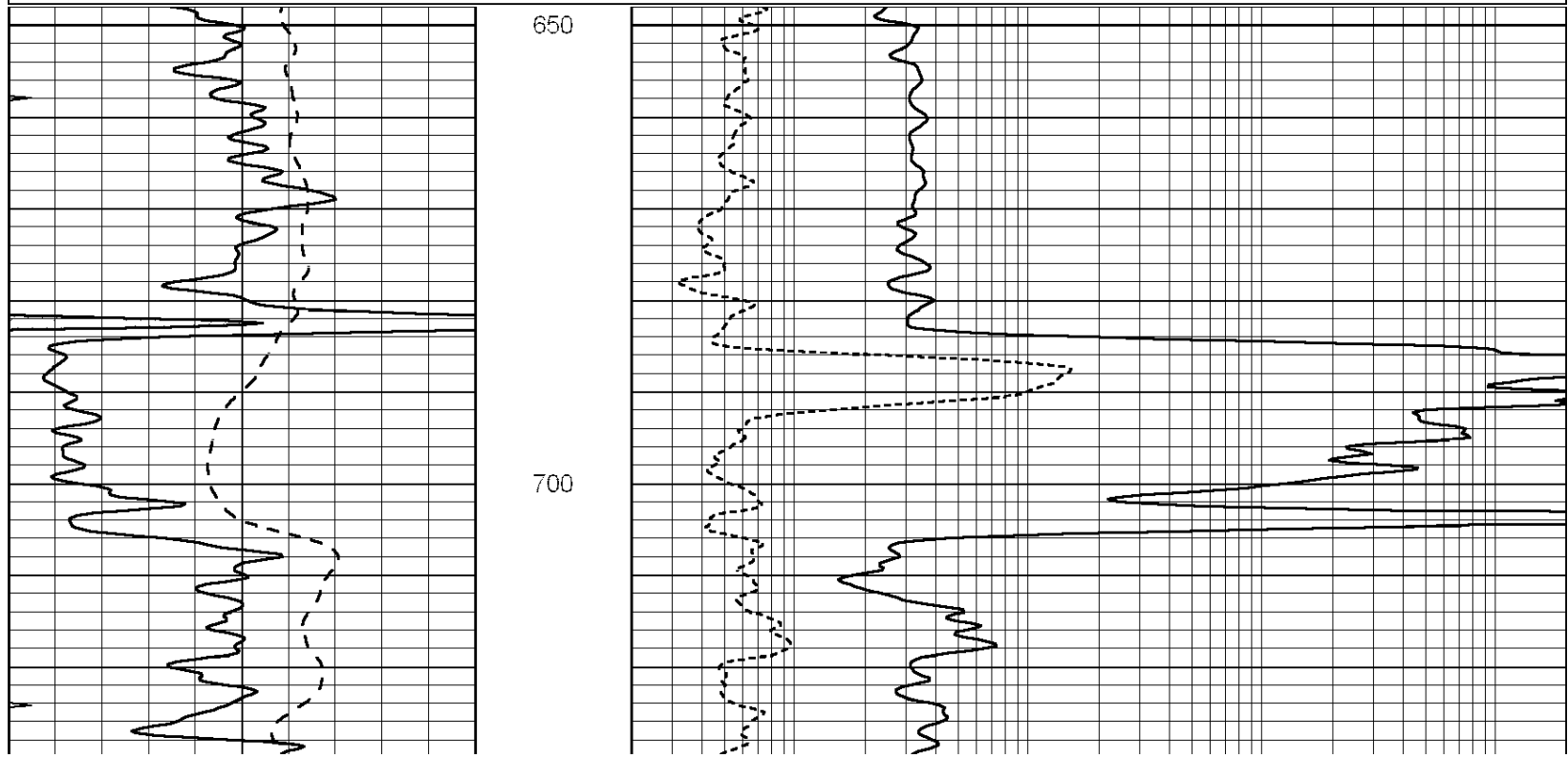
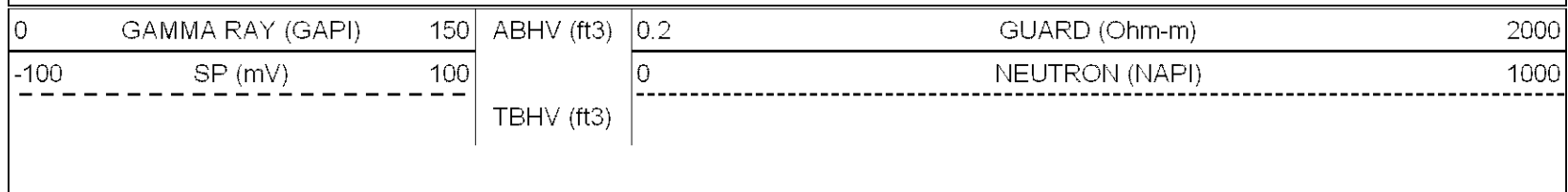


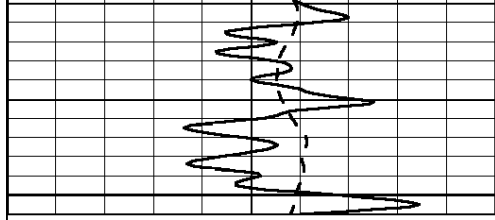


SUPERIOR
Hays,
Kansas

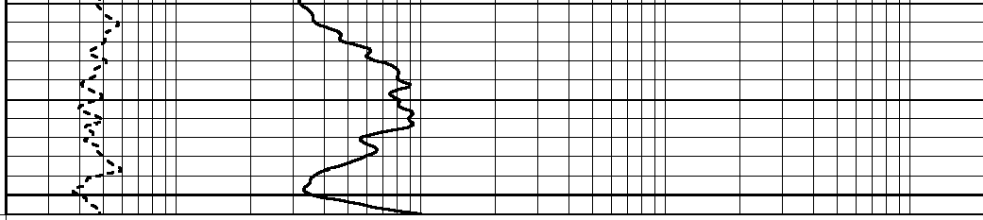
MAIN SECTION

Database File: 006902rag.db
 Dataset Pathname: pass3.1
 Presentation Format: rag2
 Dataset Creation: Wed Apr 13 15:16:55 2011 by Calc Open-Cased 090629
 Charted by: Depth in Feet scaled 1:240





750



0 GAMMA RAY (GAPI) 150
-100 SP (mV) 100

ABHV (ft3)
TBHV (ft3)

0.2 GUARD (Ohm-m) 2000
0 NEUTRON (NAPI) 1000



SUPERIOR
Hays,
Kansas

MAIN SECTION

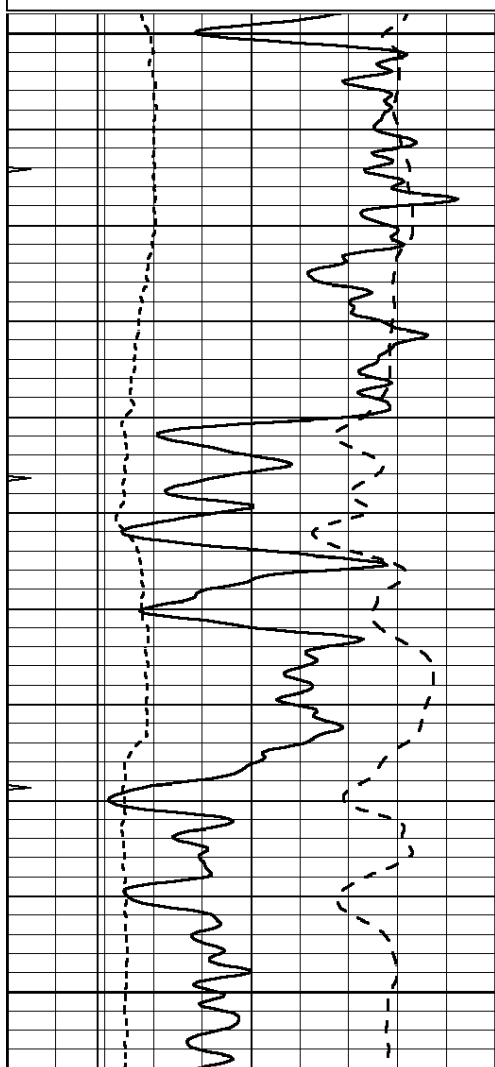
Database File: 006902rag.db
 Dataset Pathname: pass3.1
 Presentation Format: rag
 Dataset Creation: Wed Apr 13 15:16:55 2011 by Calc Open-Cased 090629
 Charted by: Depth in Feet scaled 1:240

0 GAMMA RAY (GAPI) 150
-100 SP (mV) 100

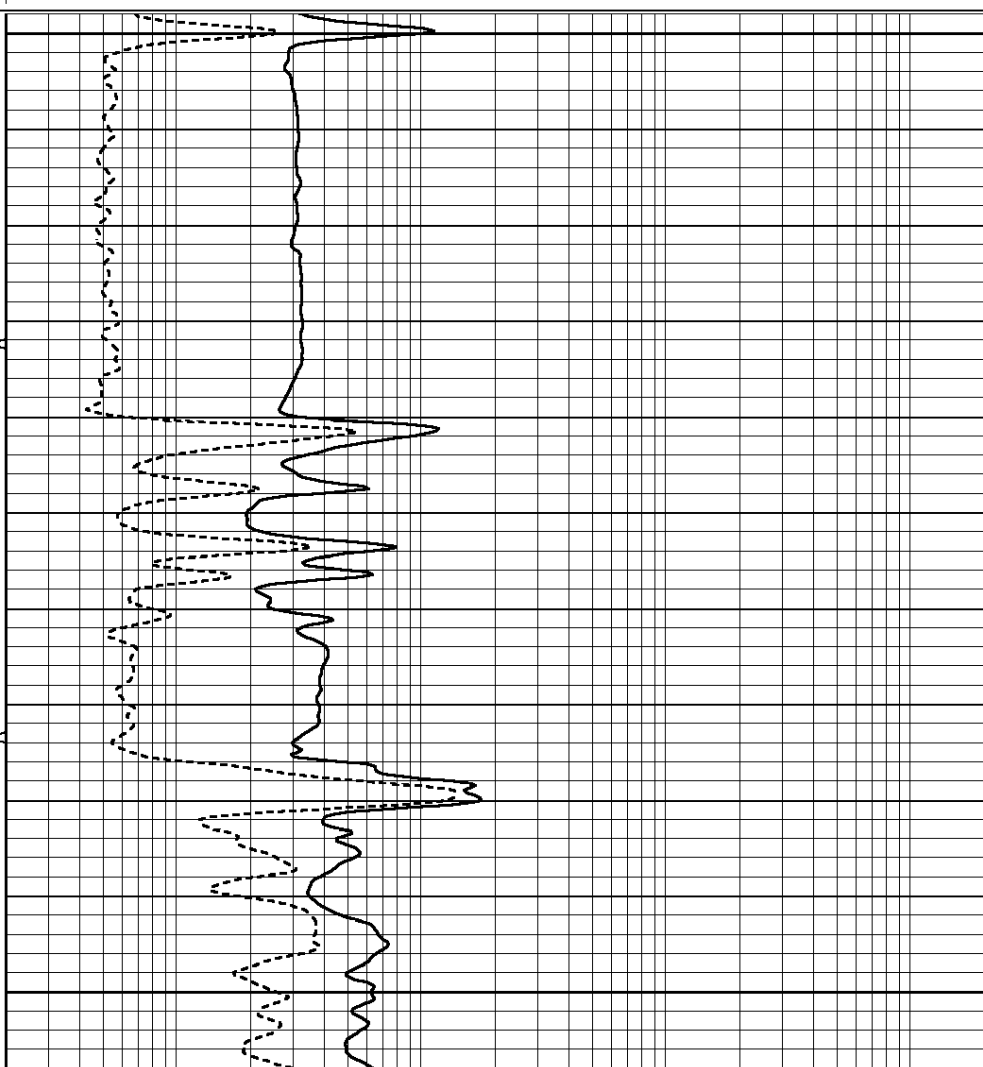
ABHV
10 (ft3)
TBHV
0 (ft3) 10

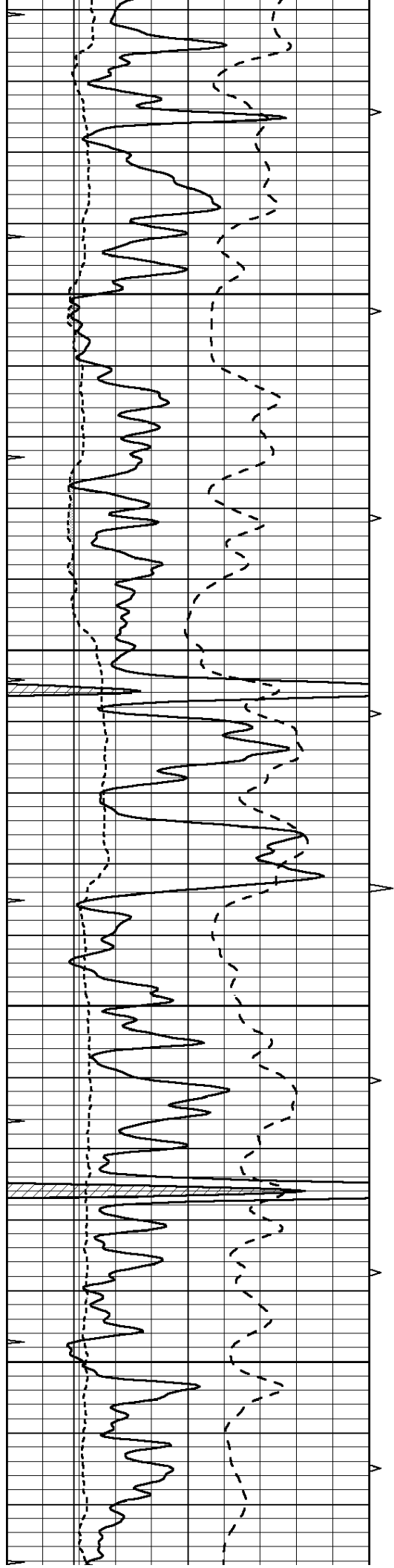
0.2 GUARD (Ohm-m) 2000
0 NEUTRON (NAPI) 1000

6 CALIPER (in) 16



2500
2550
2600



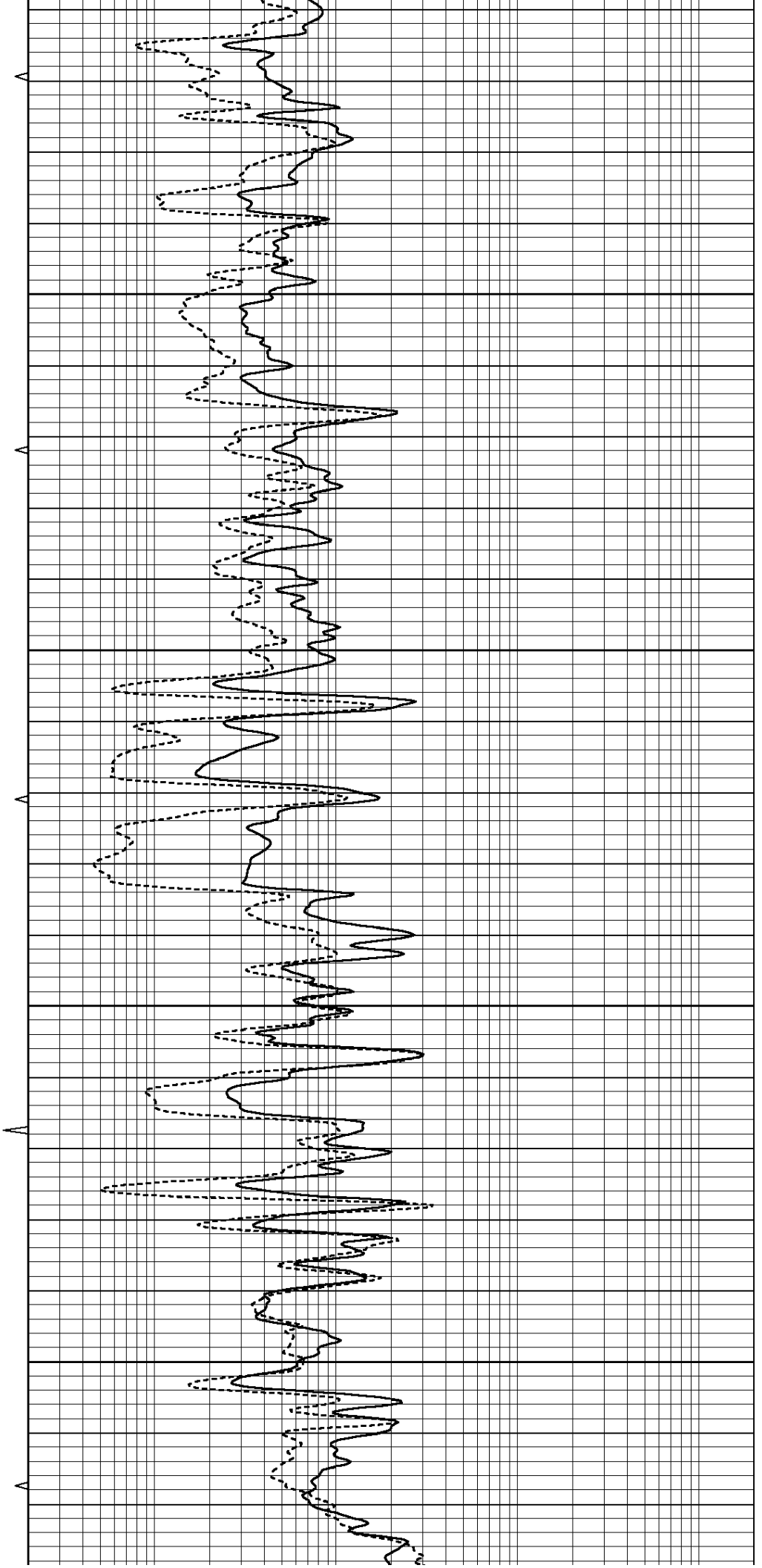


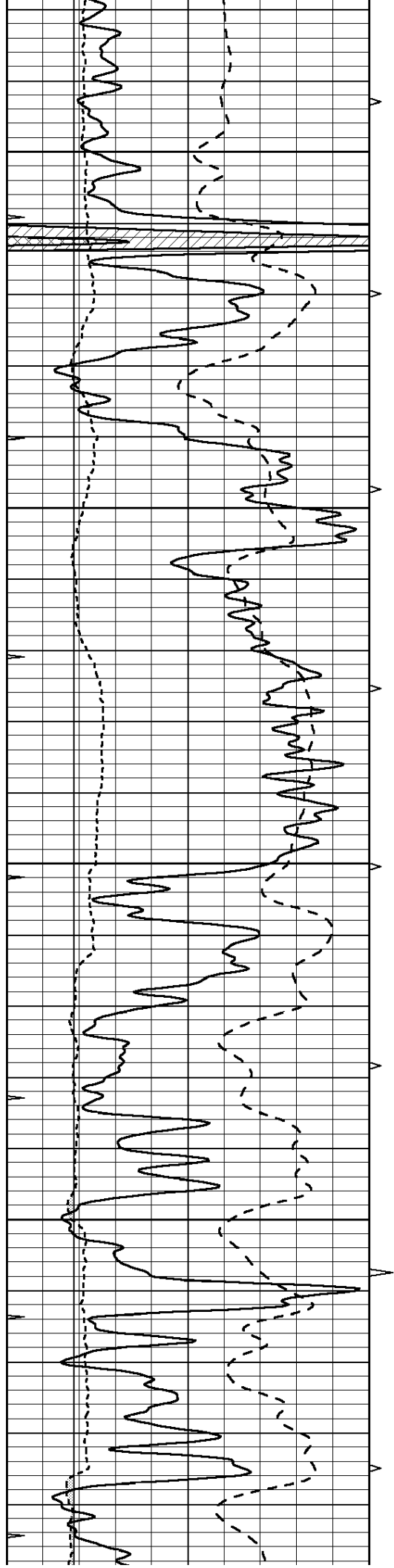
2650

2700

2750

2800



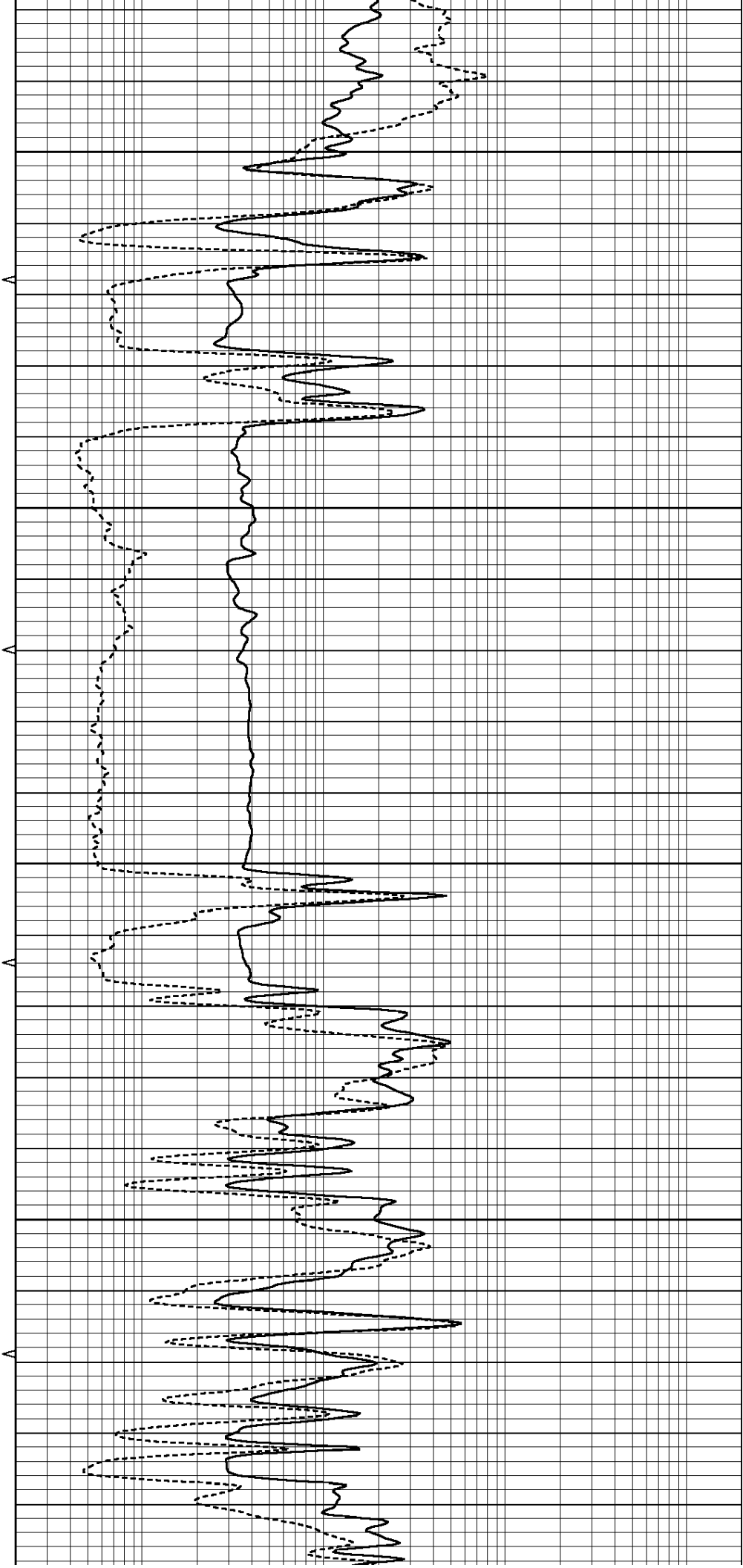


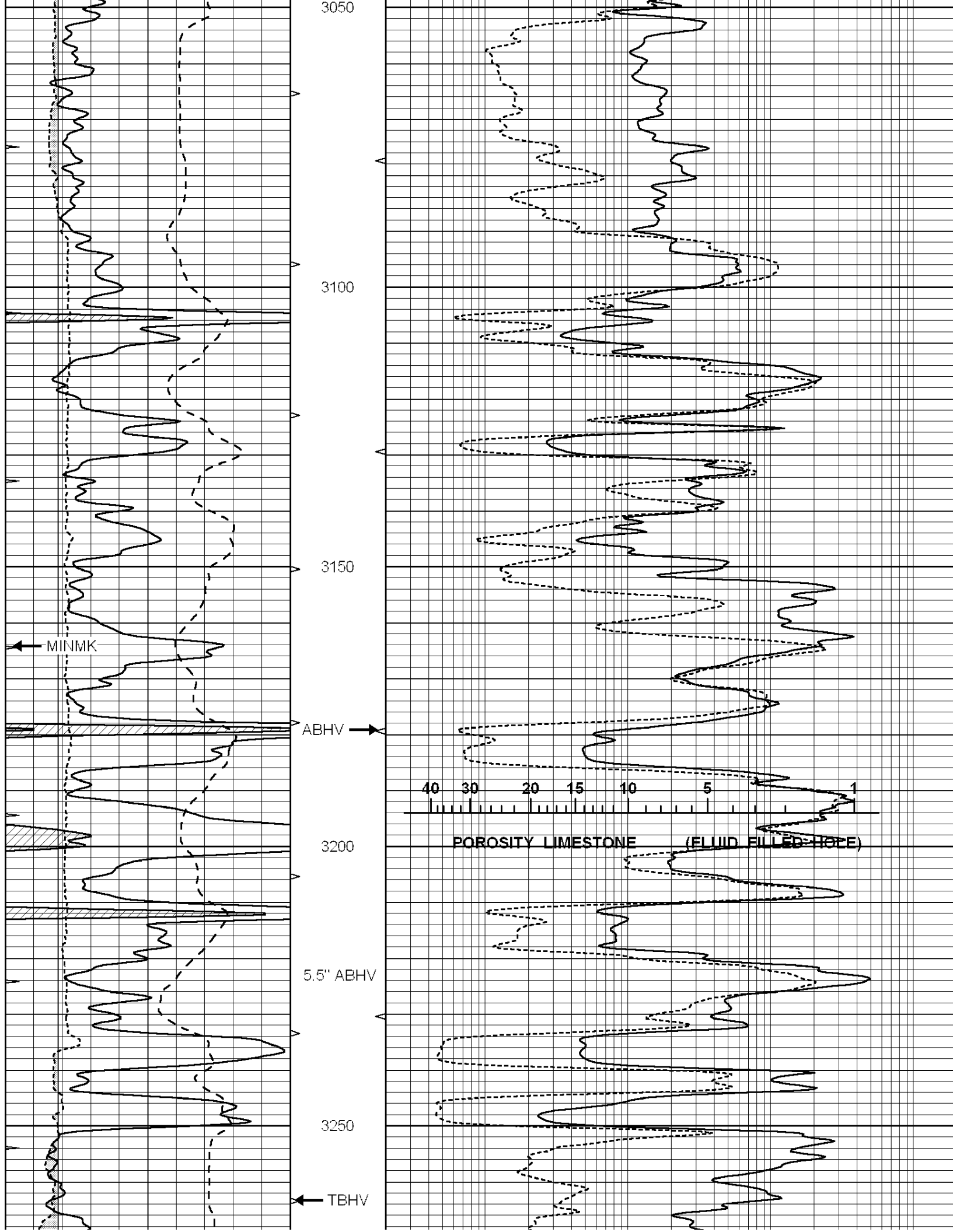
2850

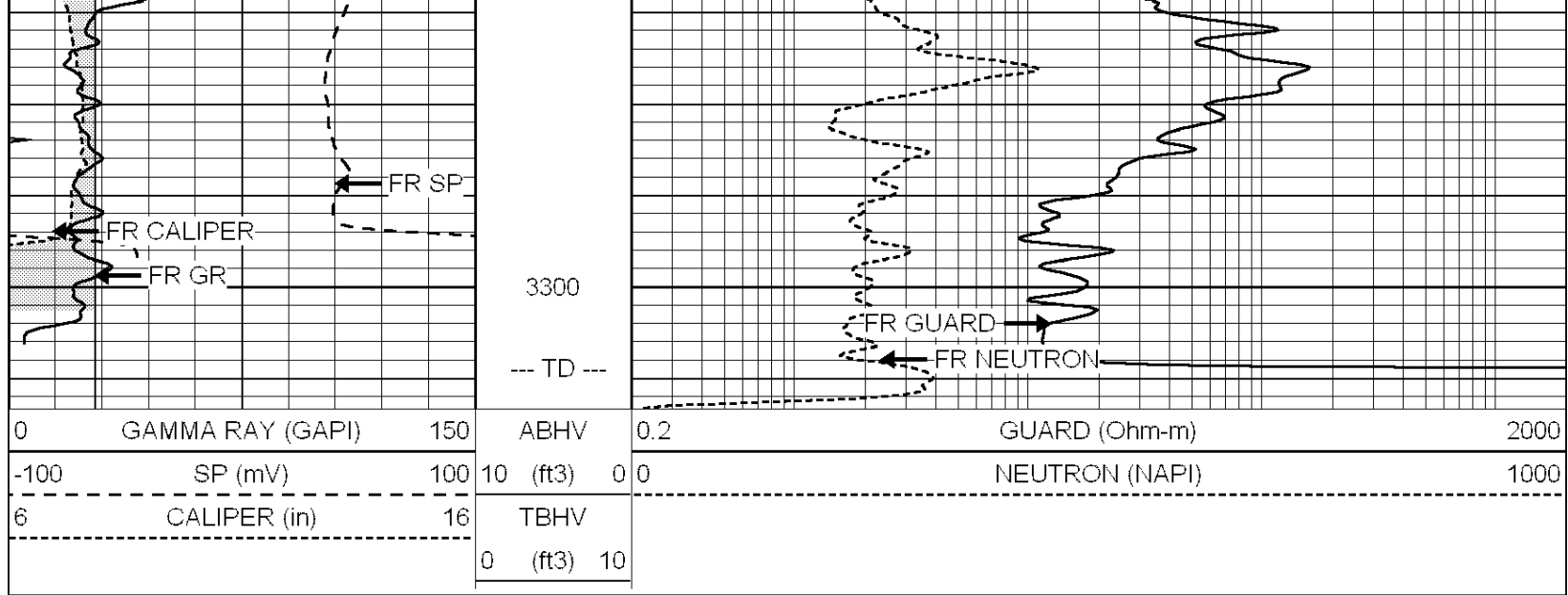
2900

2950

3000



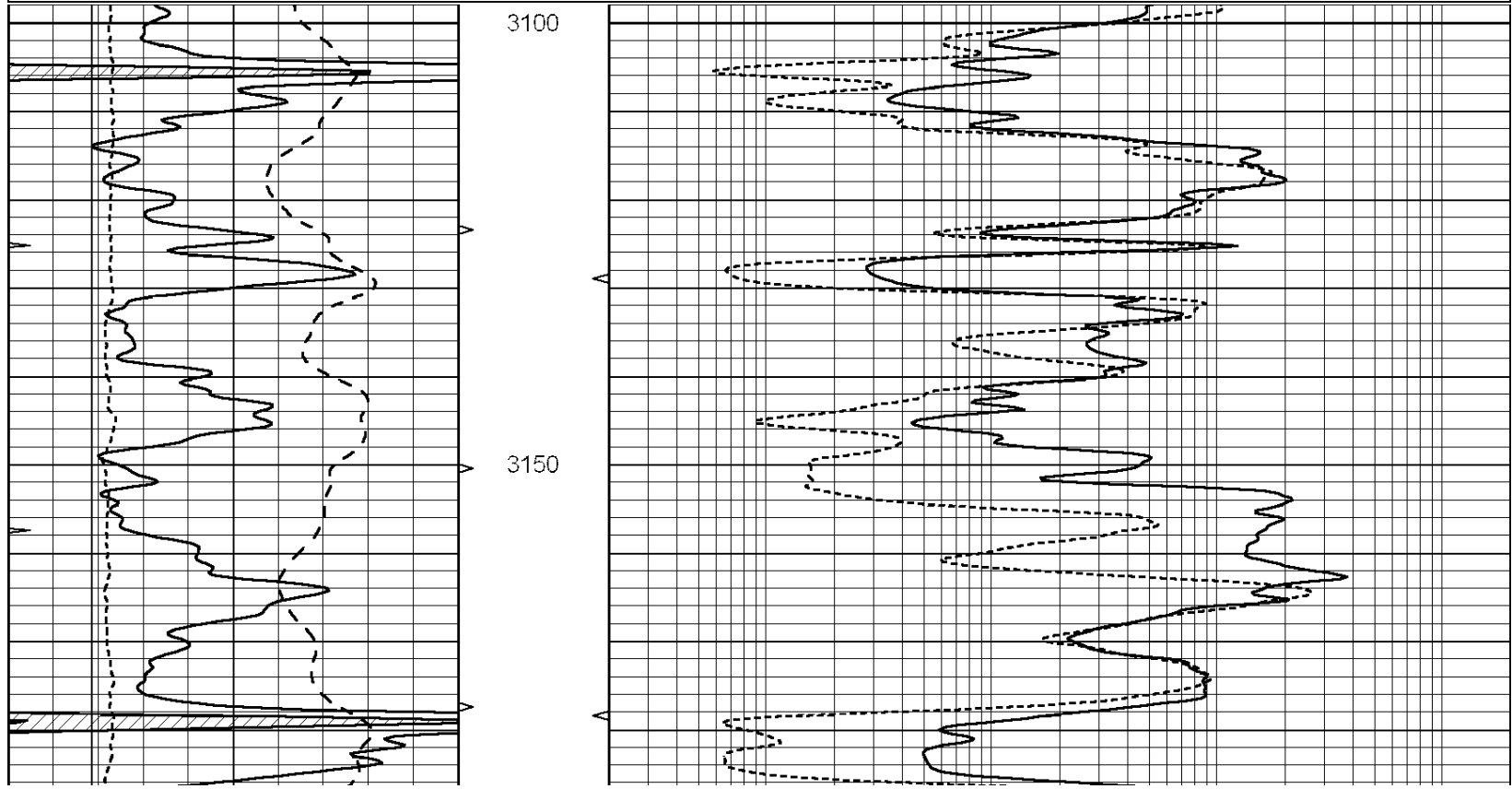
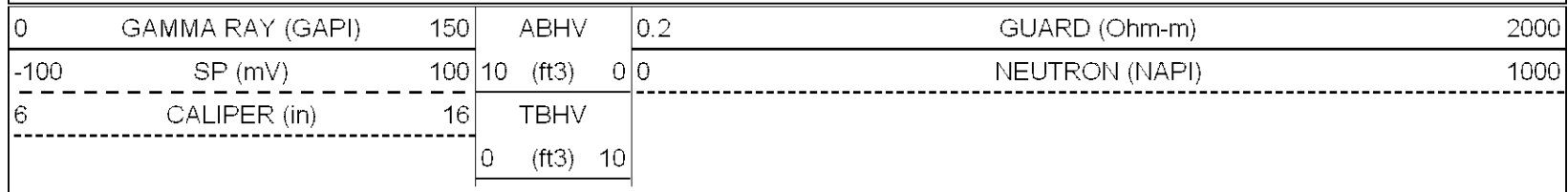


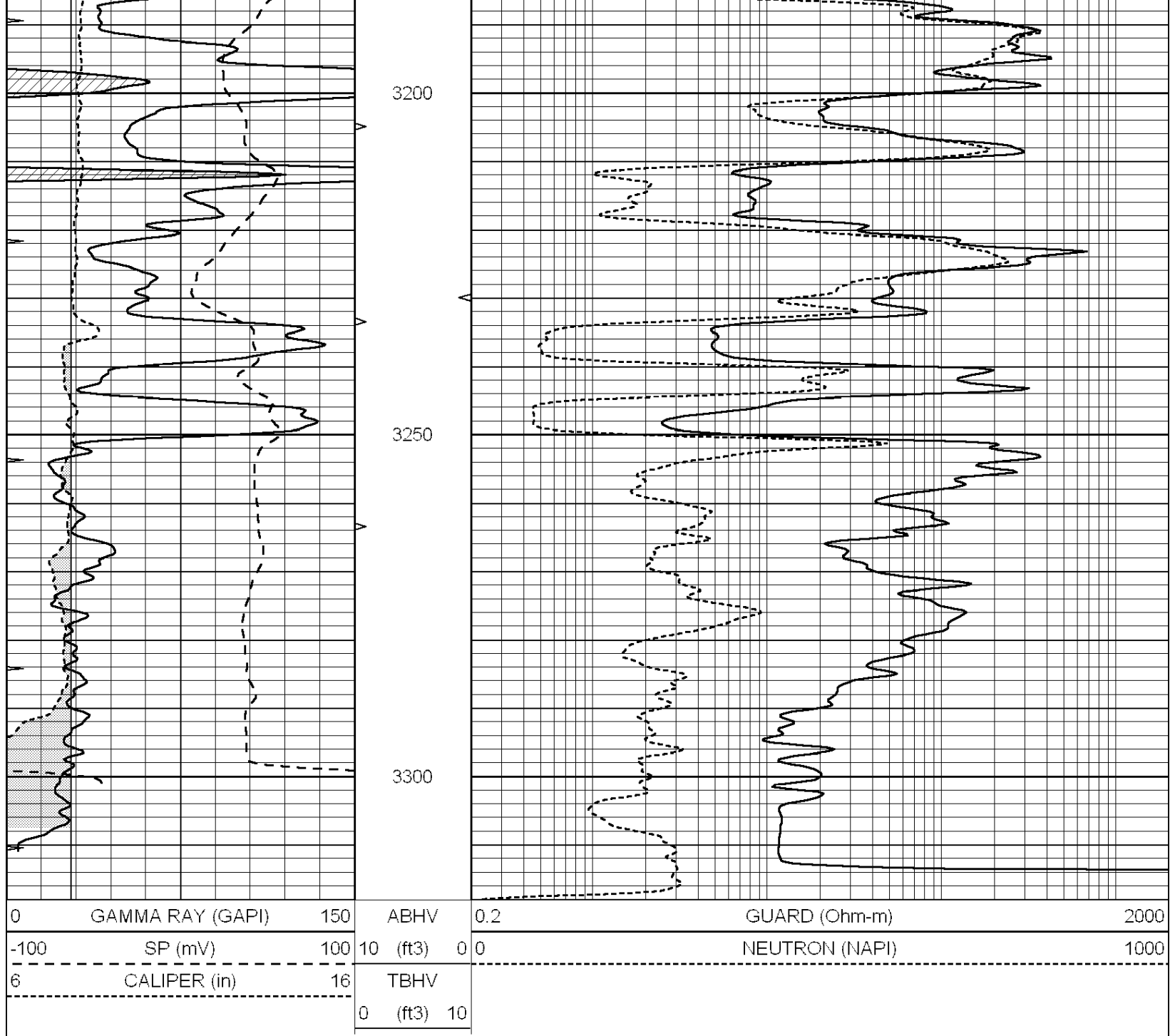


SUPERIOR
Hays,
Kansas

REPEAT SECTION

Database File: 006902rag.db
 Dataset Pathname: pass2.2
 Presentation Format: rag
 Dataset Creation: Wed Apr 13 14:59:16 2011 by Calc Open-Cased 090629
 Charted by: Depth in Feet scaled 1:240





Calibration Report

Database File: 006902rag.db
 Dataset Pathname: pass3.1
 Dataset Creation: Wed Apr 13 15:16:55 2011 by Calc Open-Cased 090629

Neutron Calibration Report

Serial Number: RAG1
 Tool Model: RAG
 Performed: Wed Apr 13 15:00:10 2011

Calibrator Values: 0 1 NAPI
 Calibrator Readings: 0 1 cps

Sensitivity: 1.15 NAPI/cps

Micro Spherically Focused Log Calibration Report

Serial-Model: RAG1-A

	Readings			References			Results	
	Low	High		Low	High		m	b
Conductivity	0.0110	0.9000	V	10.0000	1000.0000	mmho	2000.0000	-5.8000
Caliper	0.1837	0.3151	V	8.0000	16.0000	in	60.9046	-3.1888

Gamma Ray Calibration Report

Serial Number:	RAG1	
Tool Model:	RAG	
Performed:	Wed Apr 13 14:59:58 2011	
Calibrator Value:	1.0	GAPI
Background Reading:	0.9	cps
Calibrator Reading:	1.0	cps
Sensitivity:	1.8000	GAPI/cps