



SUPERIOR
Hays,
Kansas

**DUAL
INDUCTION
LOG**

Company	WHITE EXPLORATION, INC.	Location:	API # : 15-007-23672-0000	Other Services CDL/CNL/PE MEL/SON
Well	CHAIN RANCH #3		1095' FSL & 1650' FWL	Elevation K.B. 1688 D.F. 1686 G.L. 1678
Field	AMBER CREEK SOUTHEAST			
County	BARBER			
State	KANSAS			

Date	4/9/11	Permanent Datum	GROUND LEVEL	Elevation	1678
Run Number	ONE	Log Measured From	KELLY BUSHING 10' A.G.L.		
Depth Driller	4475	Drilling Measured From	KELLY BUSHING		
Depth Logger	4469				
Bottom Logged Interval	4467				
Top Log Interval	00				
Casing Driller	8 5/8" @ 322				
Casing Logger	322				
Bit Size	7 7/8				
Type Fluid in Hole	CHEMICAL MUD				CHLORIDES 7000 PPM
Density / Viscosity	9.2/46				
pH / Fluid Loss	9.0/10.8				
Source of Sample	FLOWLINE				
Rim @ Meas. Temp	.60 @ 98F				
Rmf @ Meas. Temp	.45 @ 98F				
Rmc @ Meas. Temp	.72 @ 98F				
Source of Rmf / Rmc	MEASURED				
Rim @ BHT	.49 @ 120F				
Time Circulation Stopped	2 HOURS				
Time Logger on Bottom					
Maximum Recorded Temperature	120F				
Equipment Number	680				
Location	HAYS, KS.				
Recorded By	JASON CAPPELLUCCI				
Witnessed By	RYAN DIXON				

<<< Fold Here >>>

All interpretations are opinions based on inferences from electrical or other measurements and we cannot and do not guarantee the accuracy or correctness of any interpretation, and we shall not, except in the case of gross or willful negligence on our part, be liable or responsible for any loss, costs, damages, or expenses incurred or sustained by anyone resulting from any interpretation made by any of our officers, agents or employees. These interpretations are also subject to our general terms and conditions set out in our current Price Schedule.

Comments

THANK YOU FOR USING SUPERIOR WELL SERVICE (785) 628-6395
 DIRECTIONS
 MEDICINE LODGE, KS - E. TO ISABEL RD. - 8 N. TO CHAIN RANCH
 W. INTO, STAY LEFT AT 3 FORKS, 4TH FORK STAY RIGHT INTO



SUPERIOR
Hays,
Kansas

MAIN SECTION

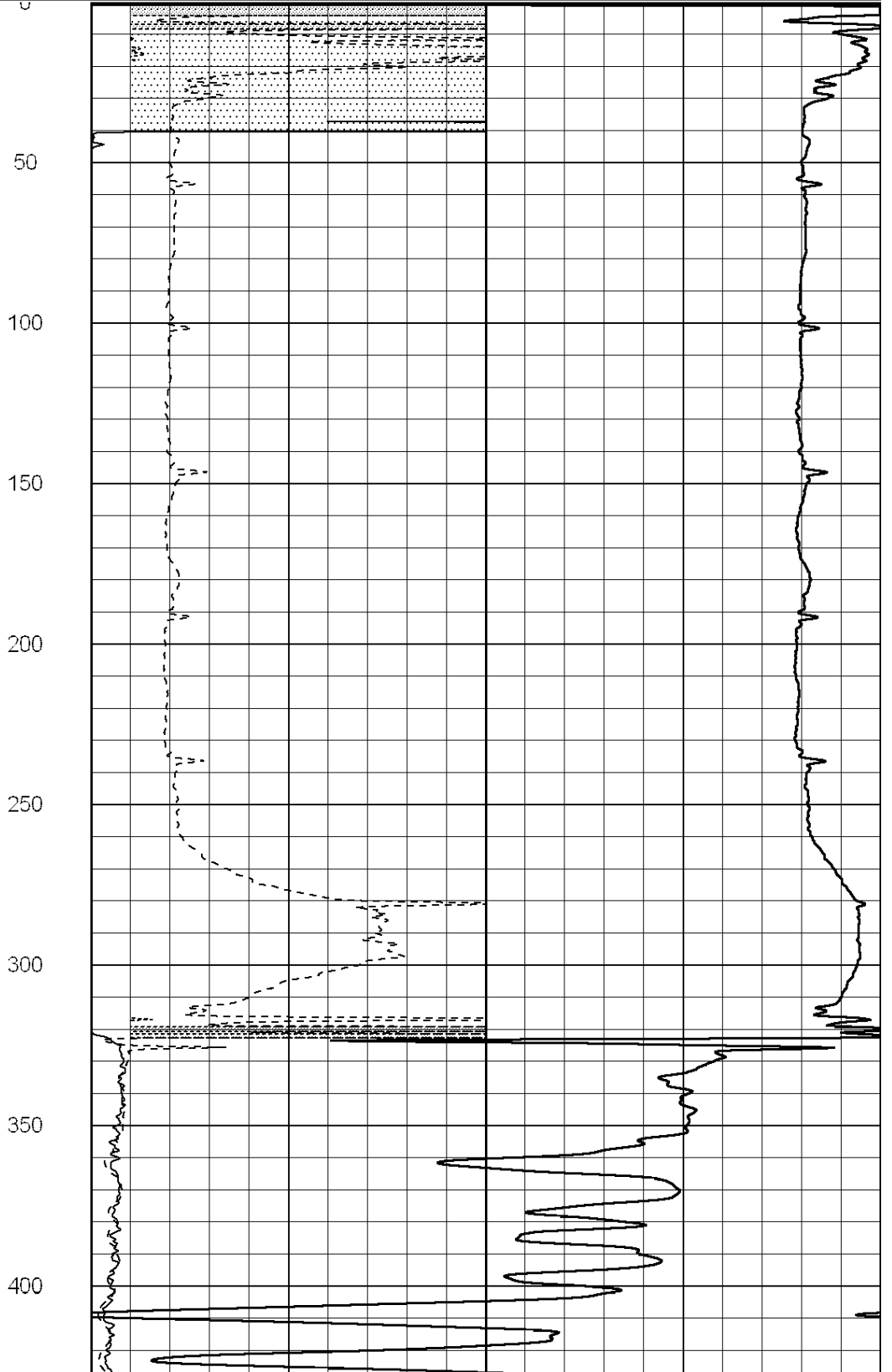
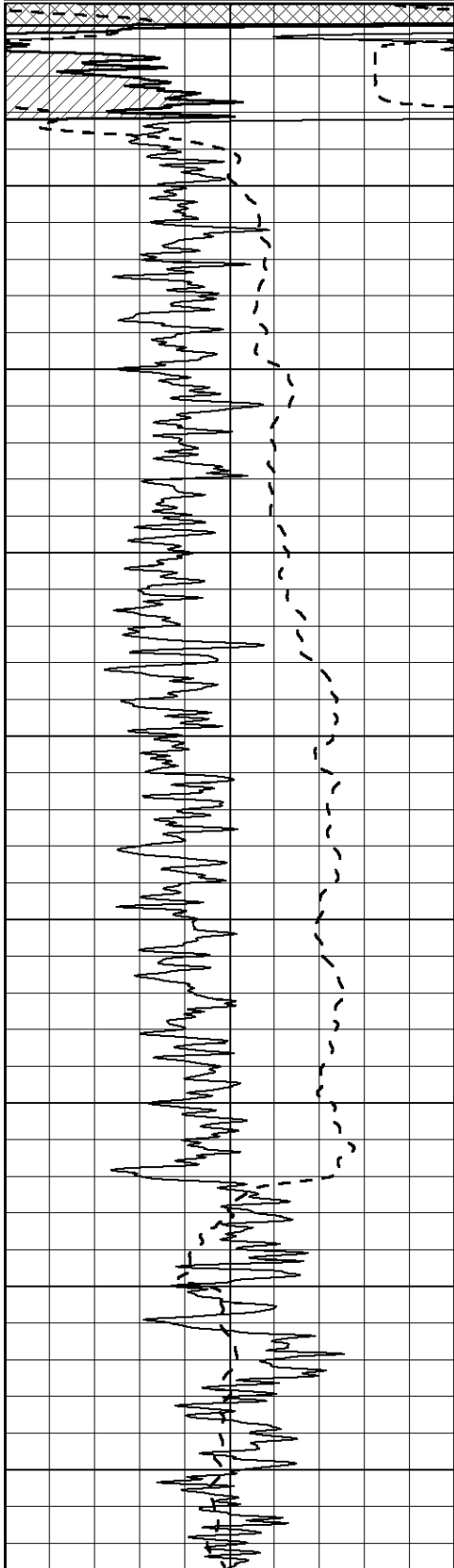
Database File: 006336pe.db
 Dataset Pathname: pass3.2
 Presentation Format: _dil2
 Dataset Creation: Sat Apr 09 07:23:00 2011 by Calc Open-Cased 090629
 Charted by: Depth in Feet scaled 1:600

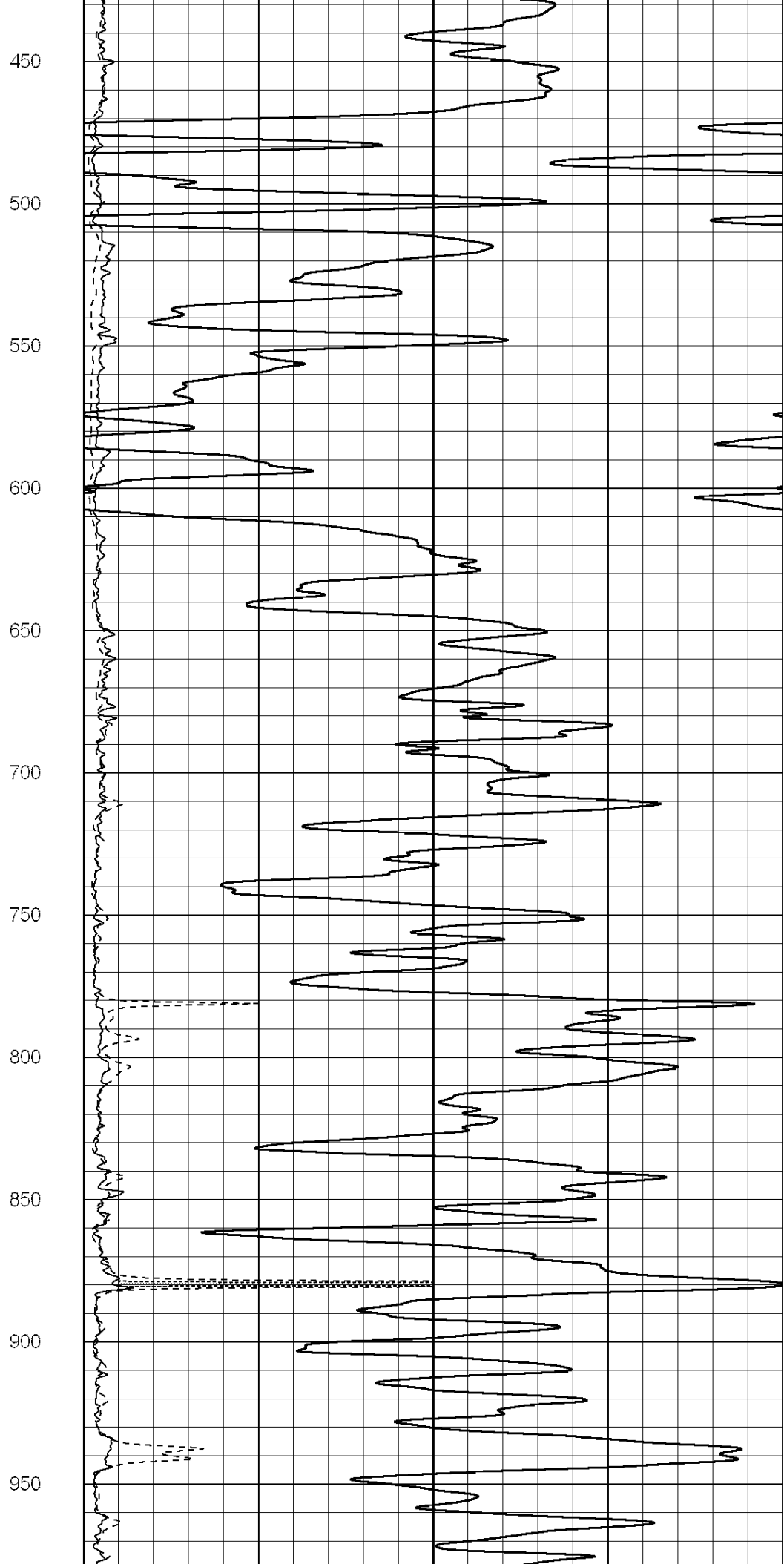
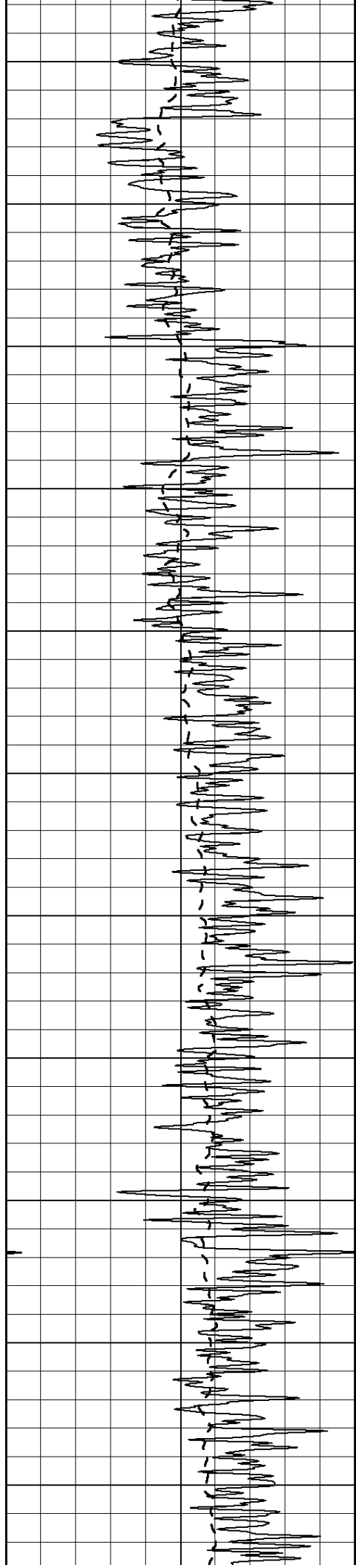
0	Gamma Ray (GAPI)	150
-100	SP (mV)	100

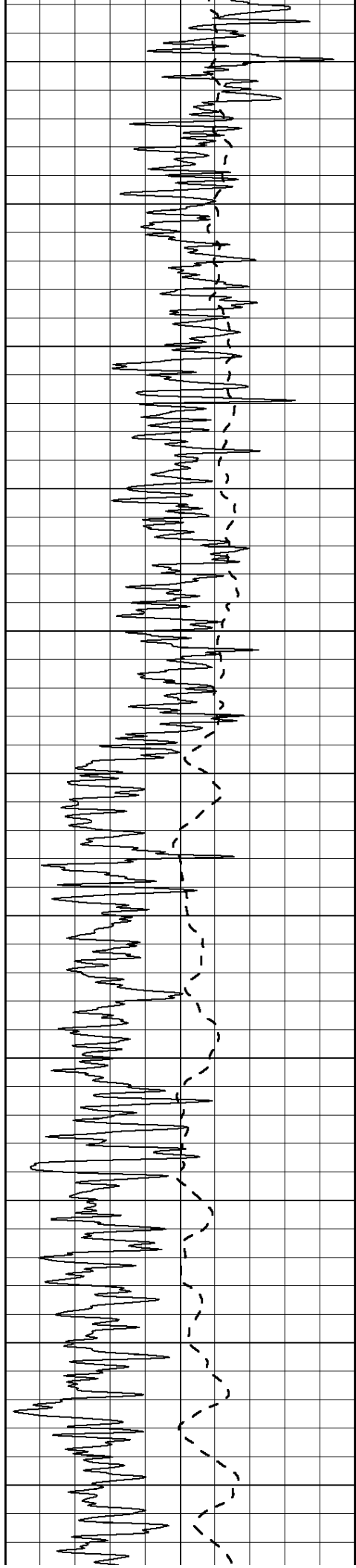
0	RLL3 (Ohm-m)	50
0	Deep Induction (Ohm-m)	50

1000	CILD (mmho/m)	0
------	---------------	---

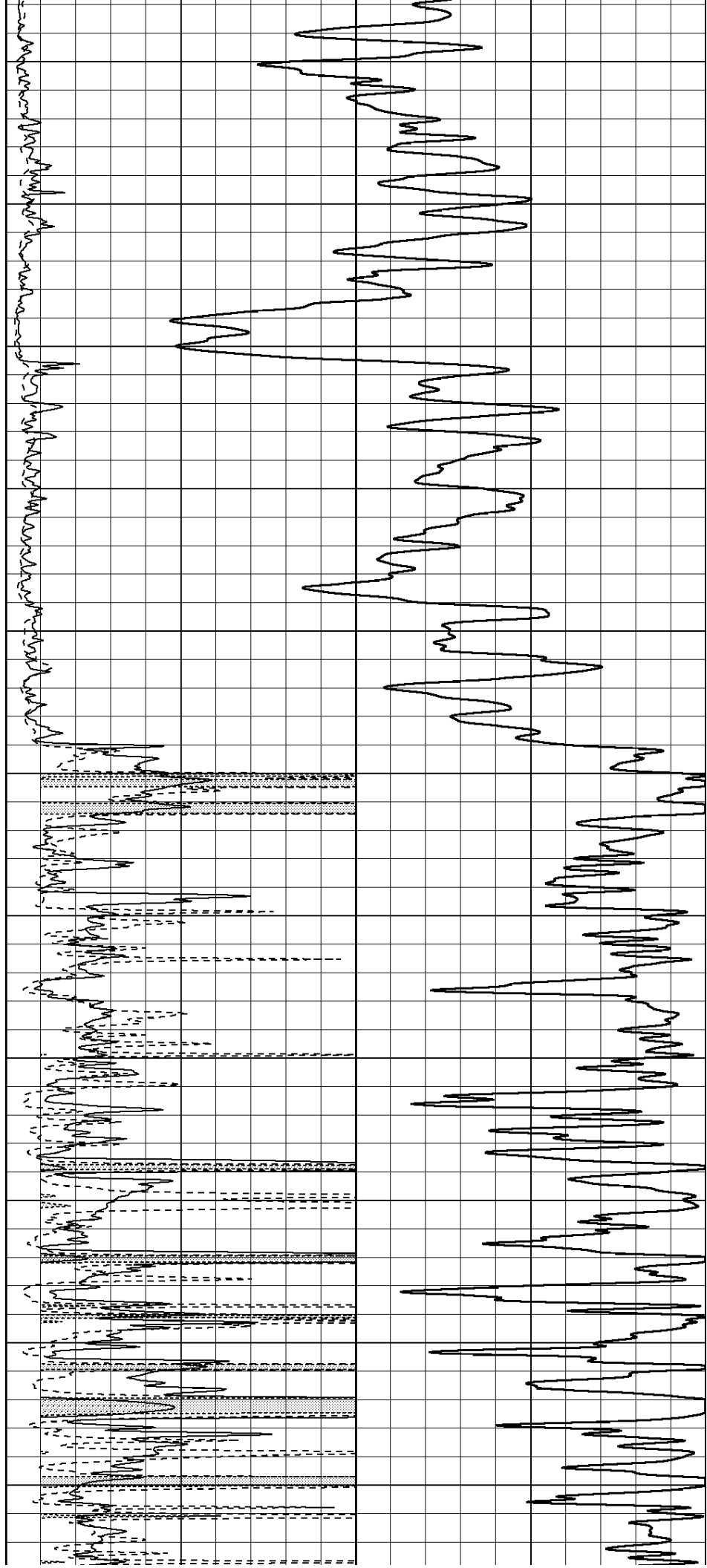
50	RILD X10 (Ohm-m)	500
50	RLL3 X10 (Ohm-m)	500

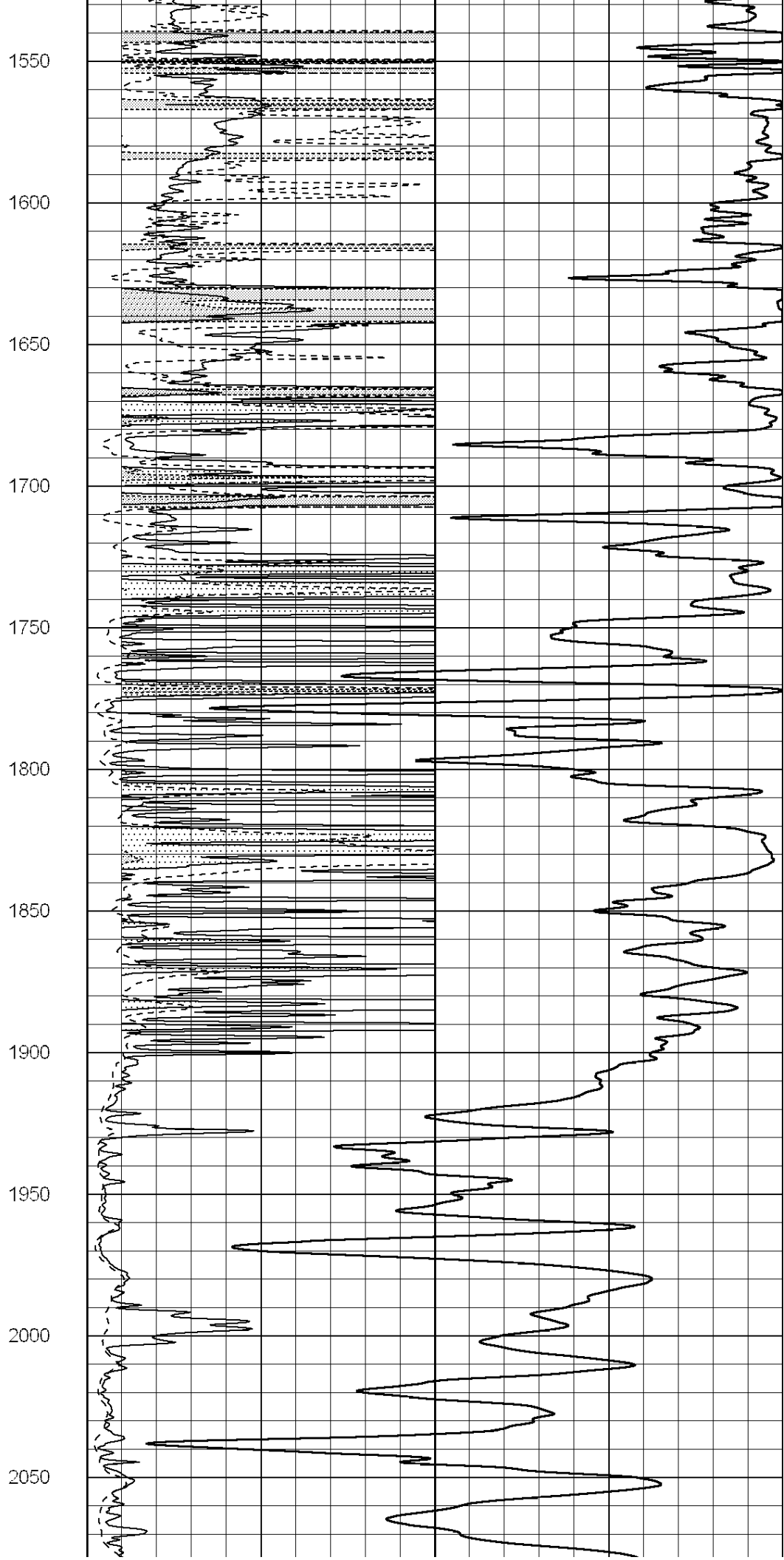
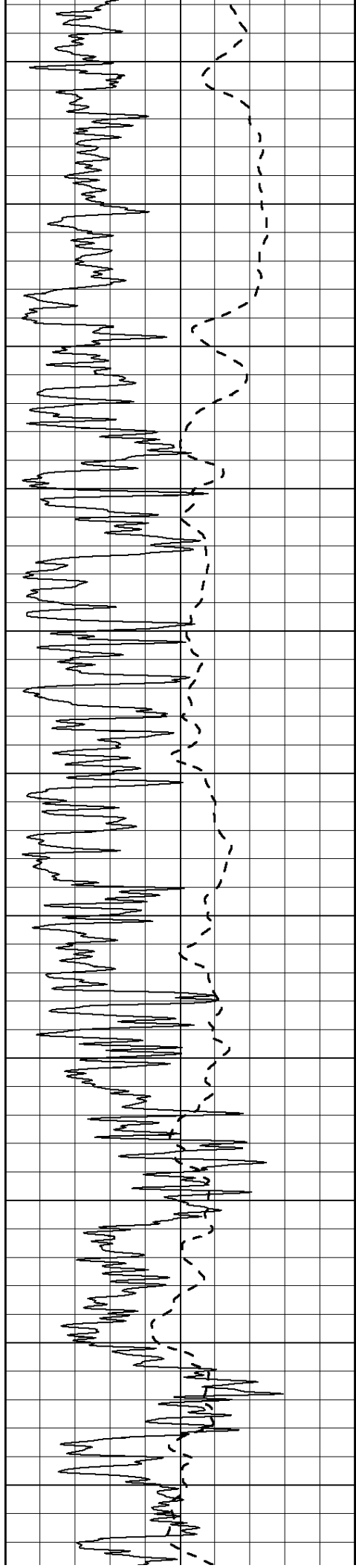


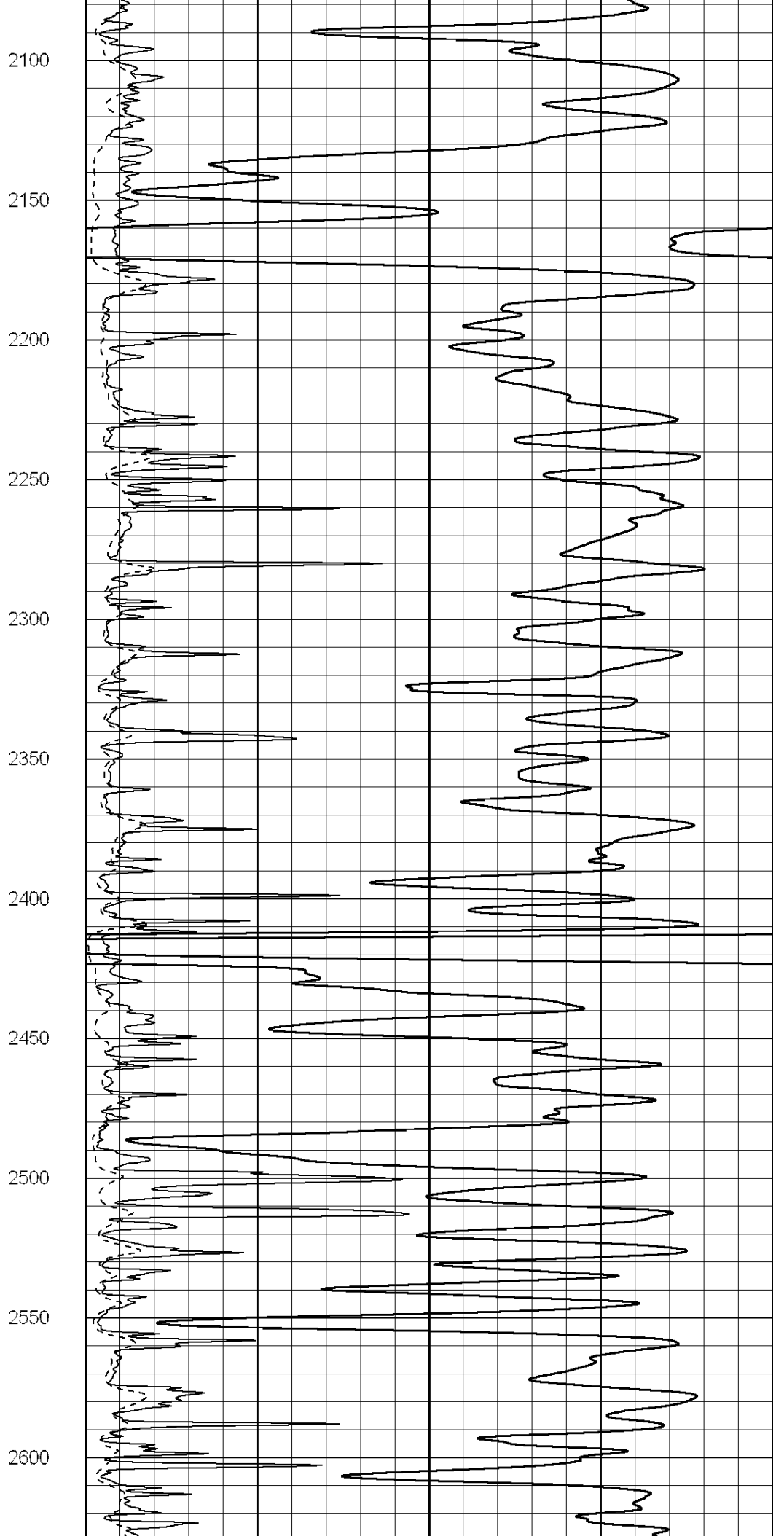
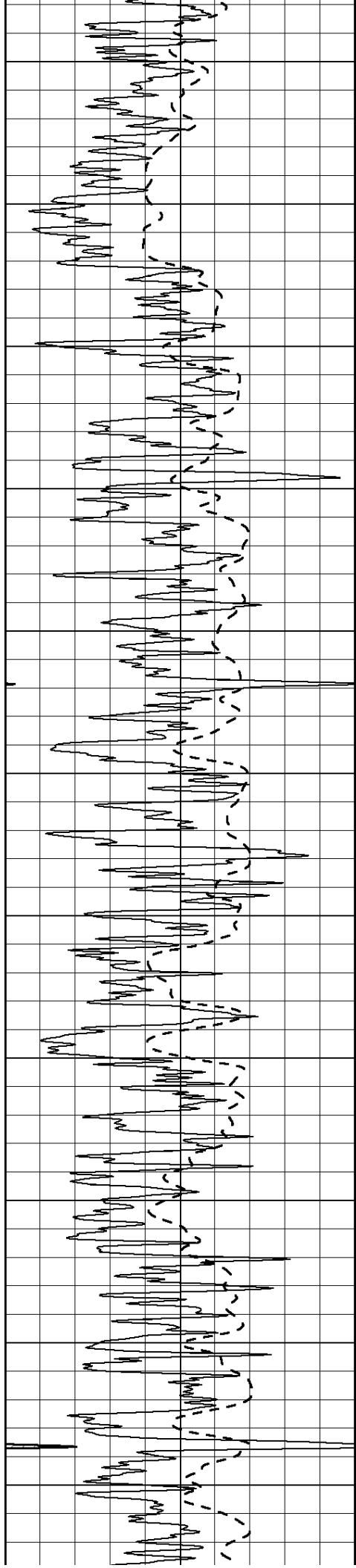


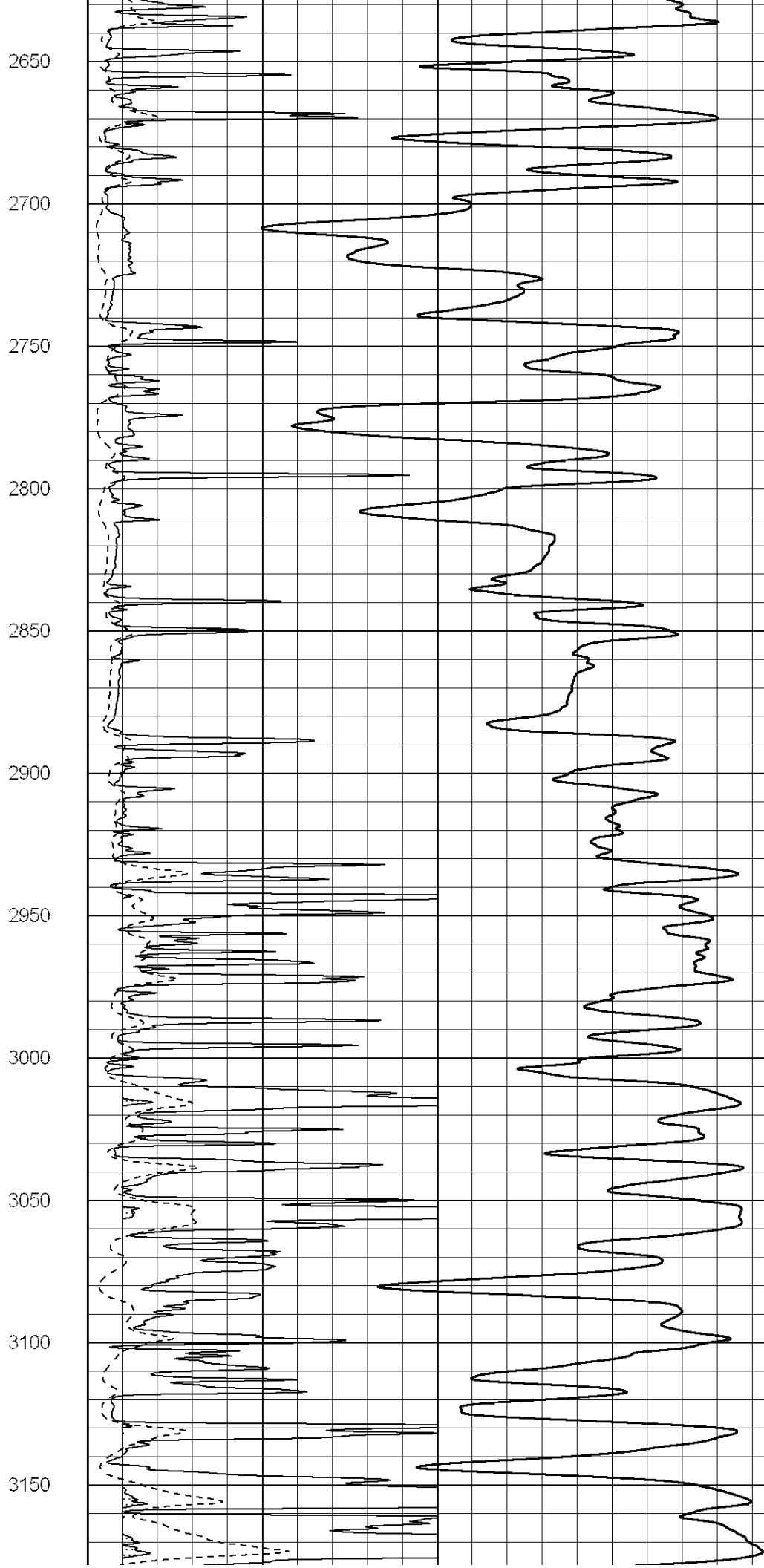
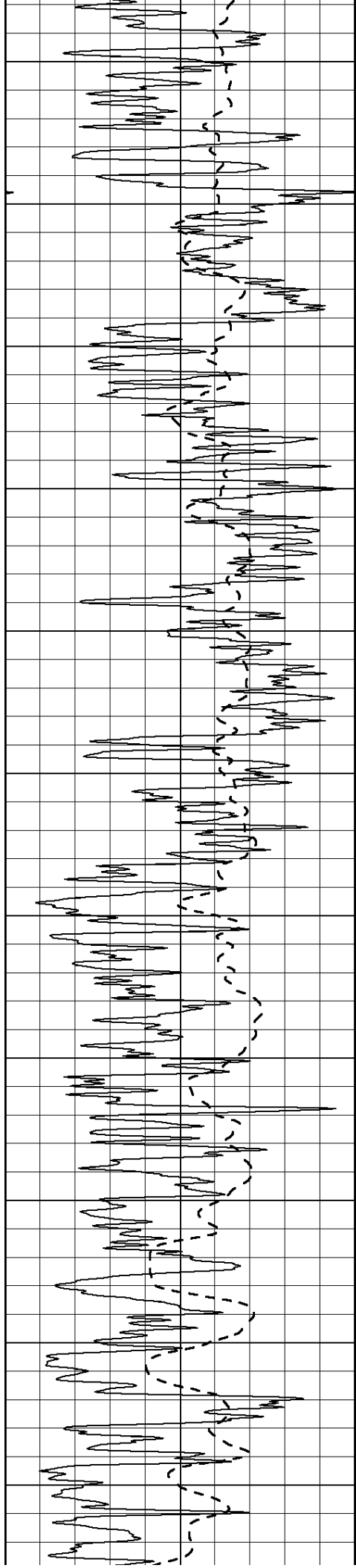


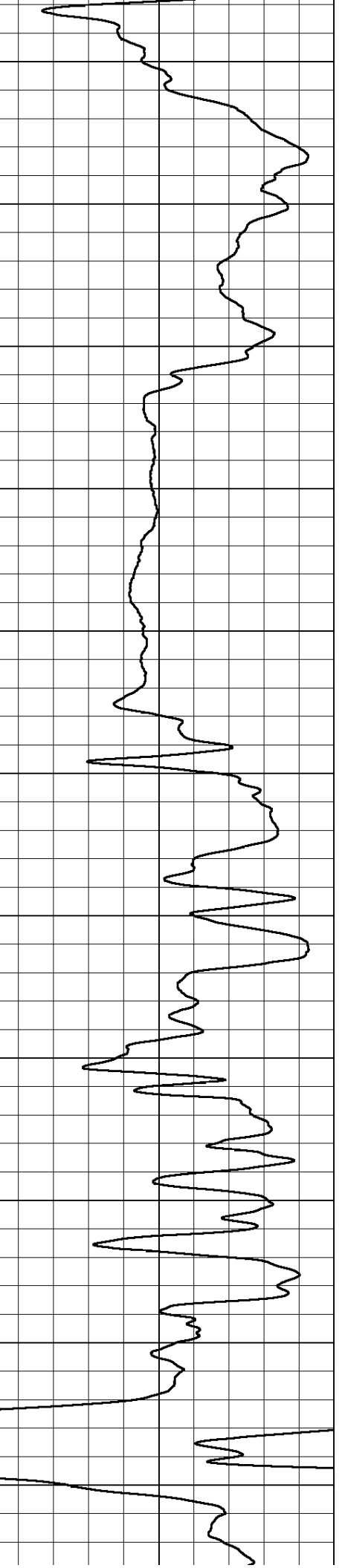
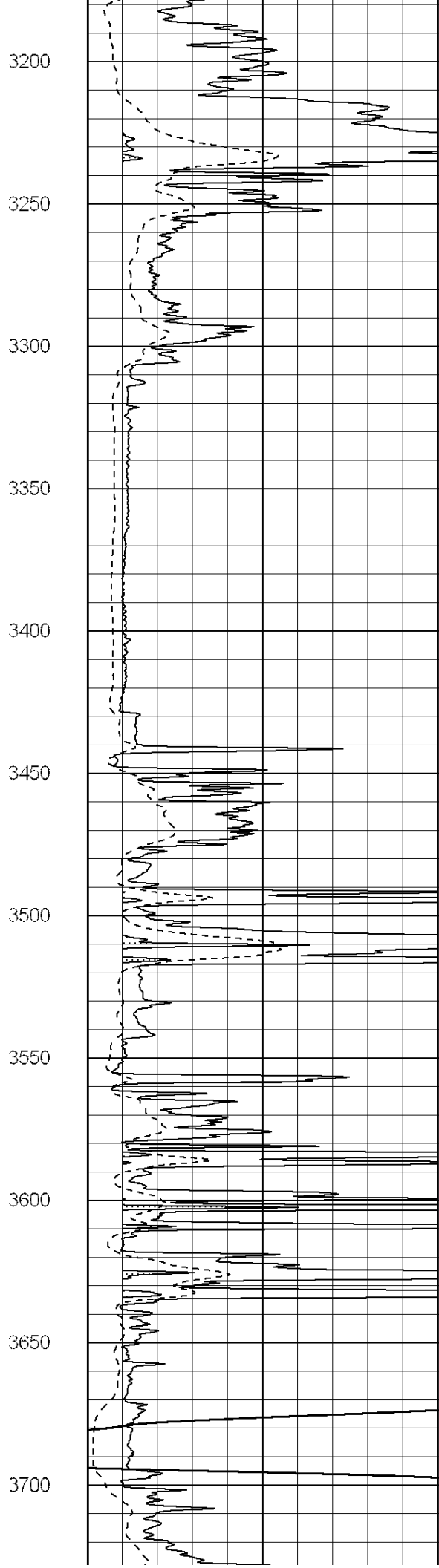
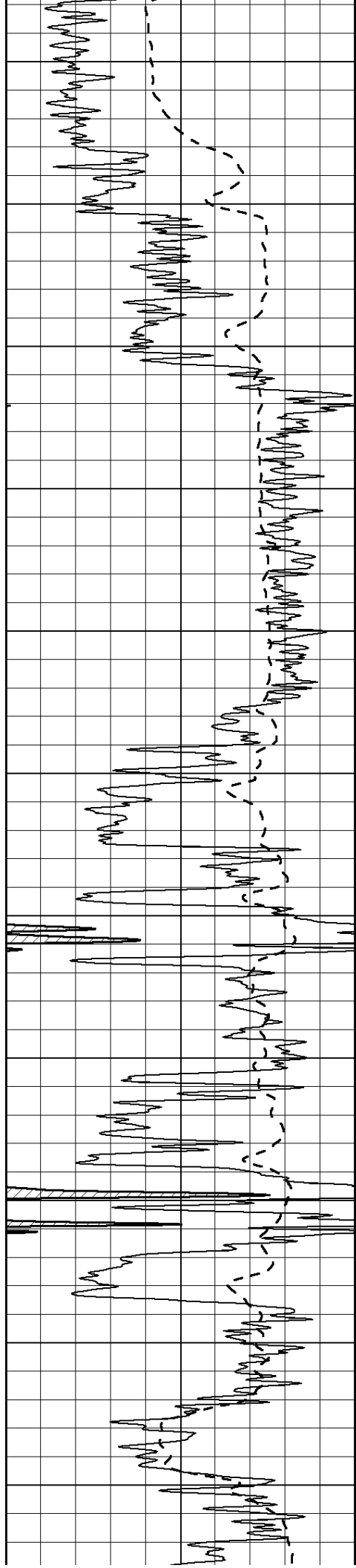
1000
1050
1100
1150
1200
1250
1300
1350
1400
1450
1500

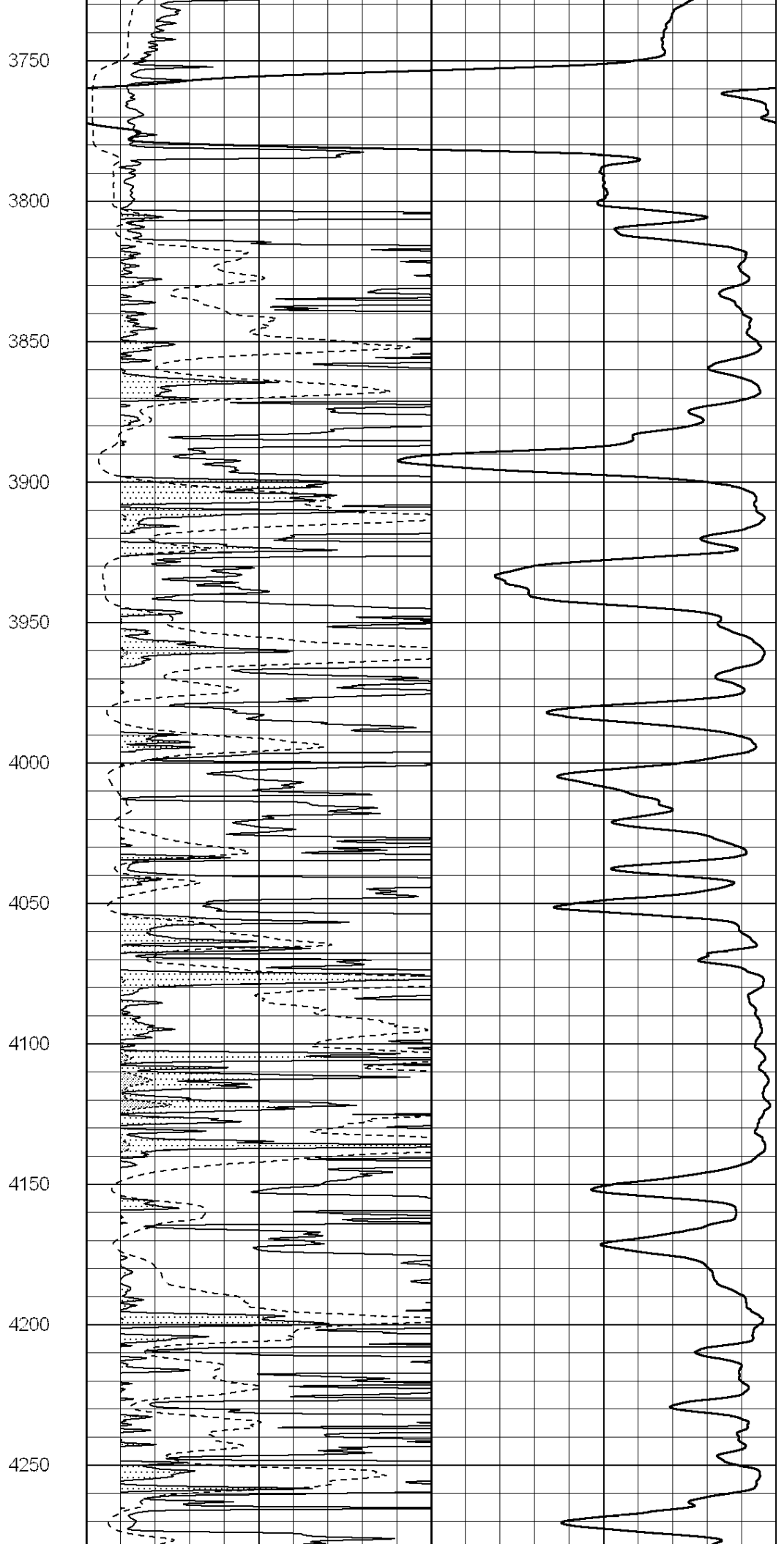
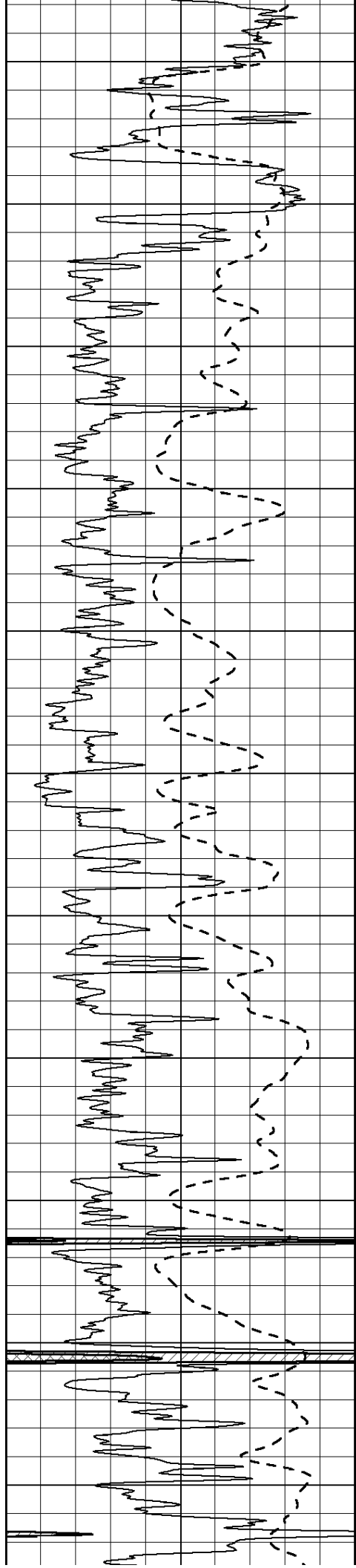


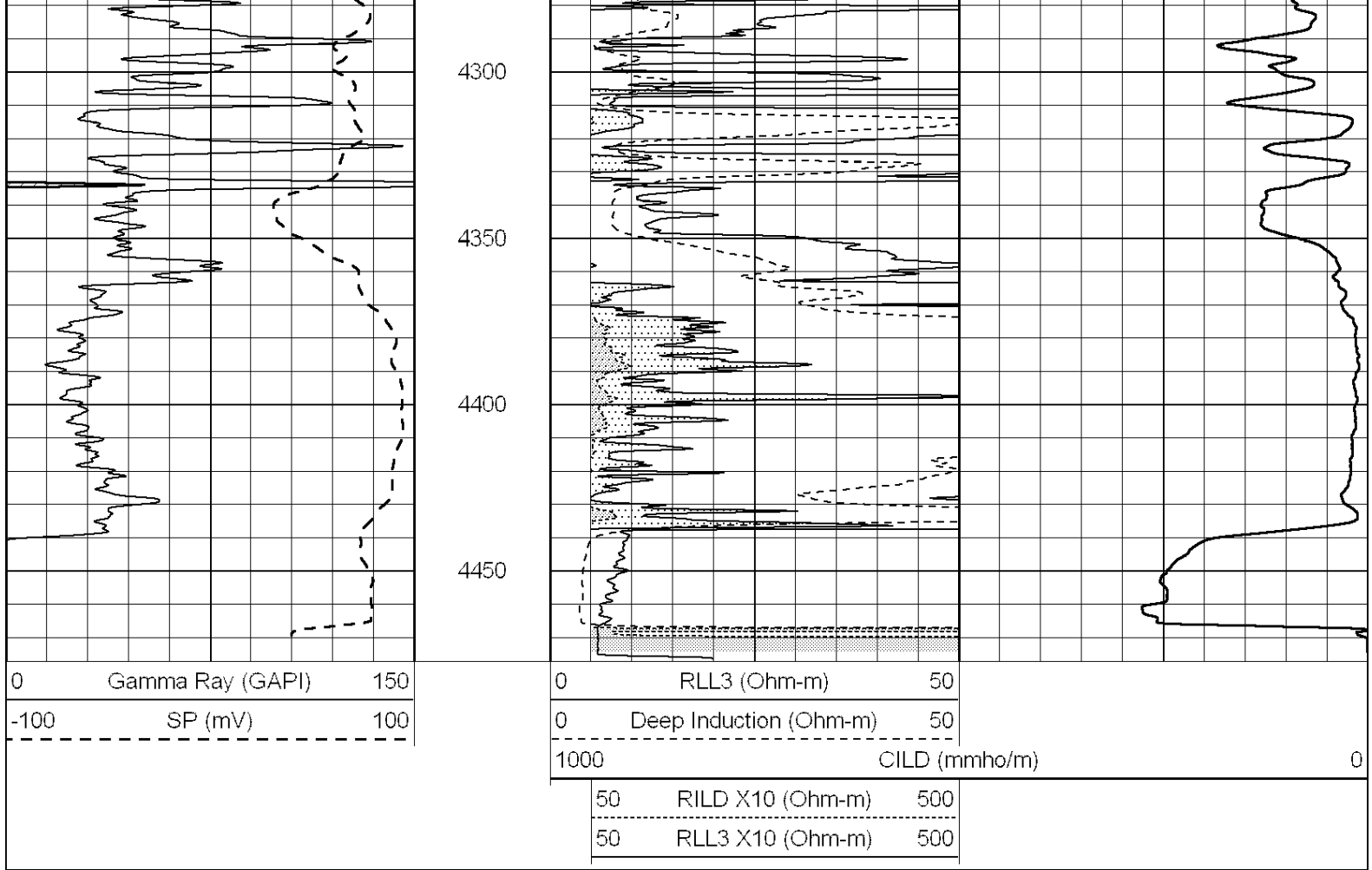












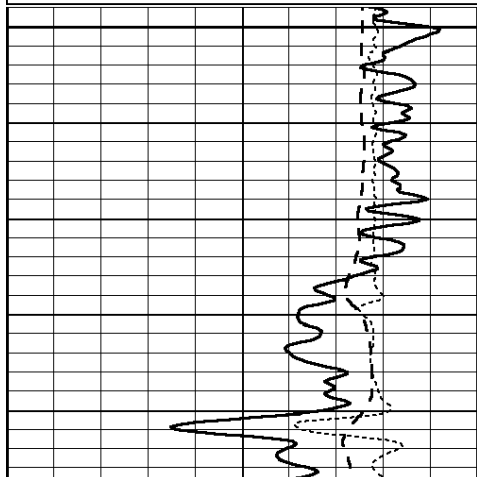
SUPERIOR
Hays,
Kansas

MAIN SECTION

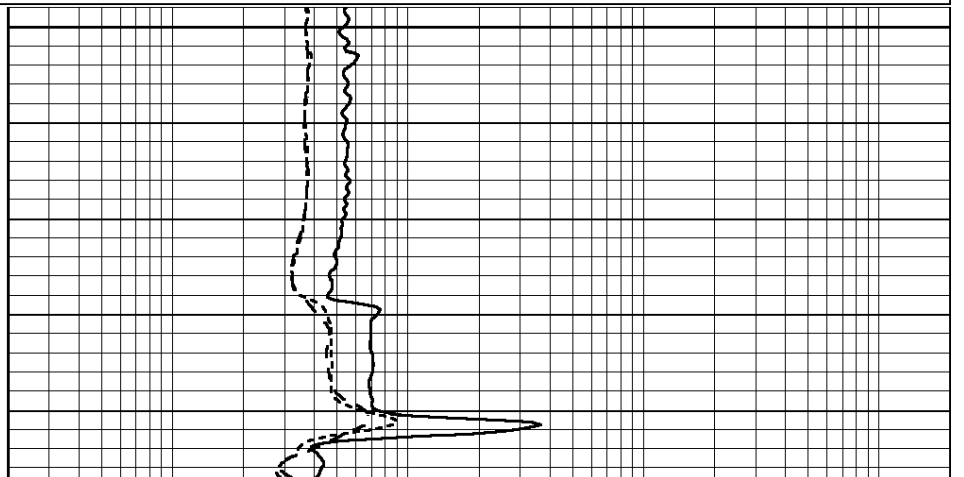
Database File: 006336pe.db
 Dataset Pathname: pass3.1
 Presentation Format: _dil
 Dataset Creation: Sat Apr 09 06:46:56 2011 by Calc Open-Cased 090629
 Charted by: Depth in Feet scaled 1:240

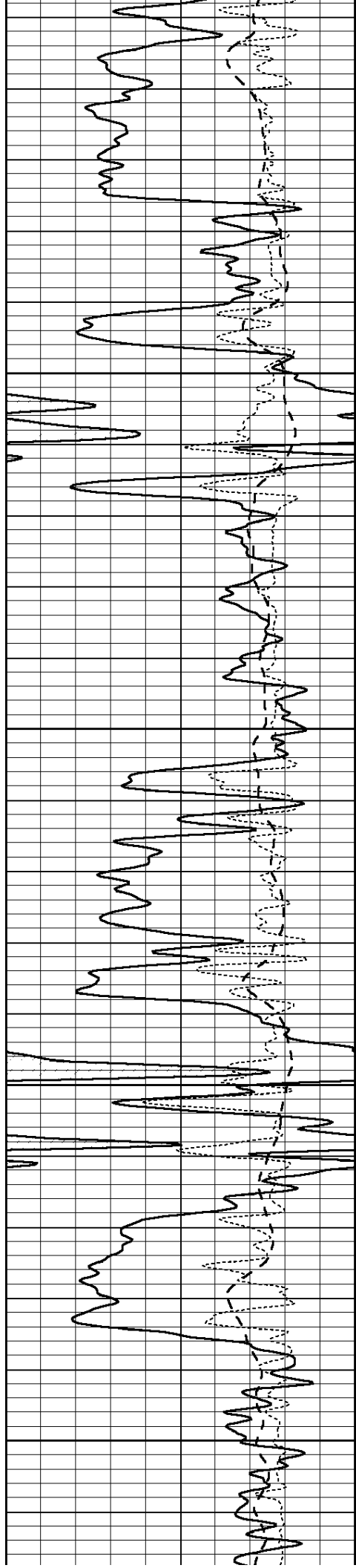
0	GAMMA RAY (GAPI)	150
-100	SP (mV)	100
-250	Rxo/Rt	50

0.2	SHALLOW GUARD (Ohm-m)	2000
0.2	MEDIUM INDUCTION (Ohm-m)	2000
0.2	DEEP INDUCTION (Ohm-m)	2000



3400





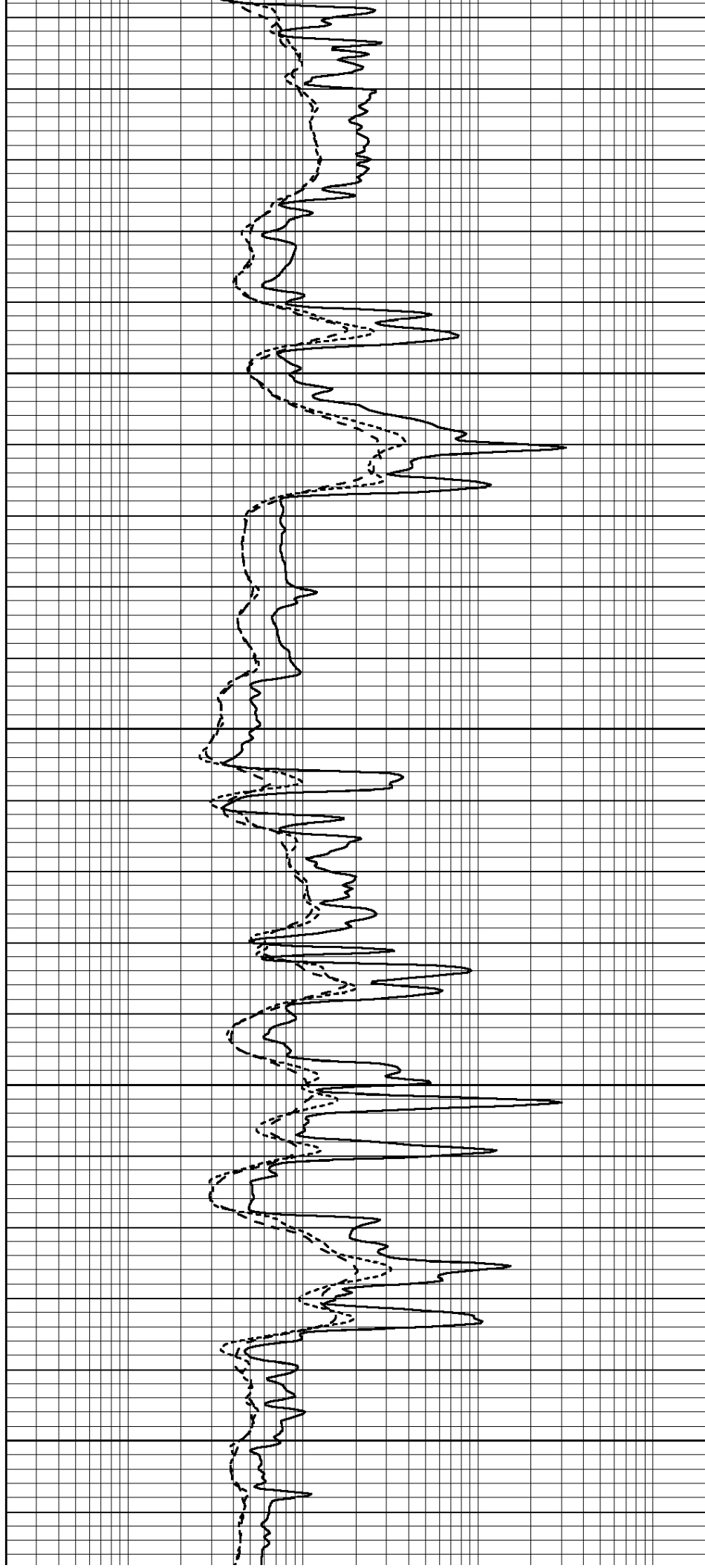
3450

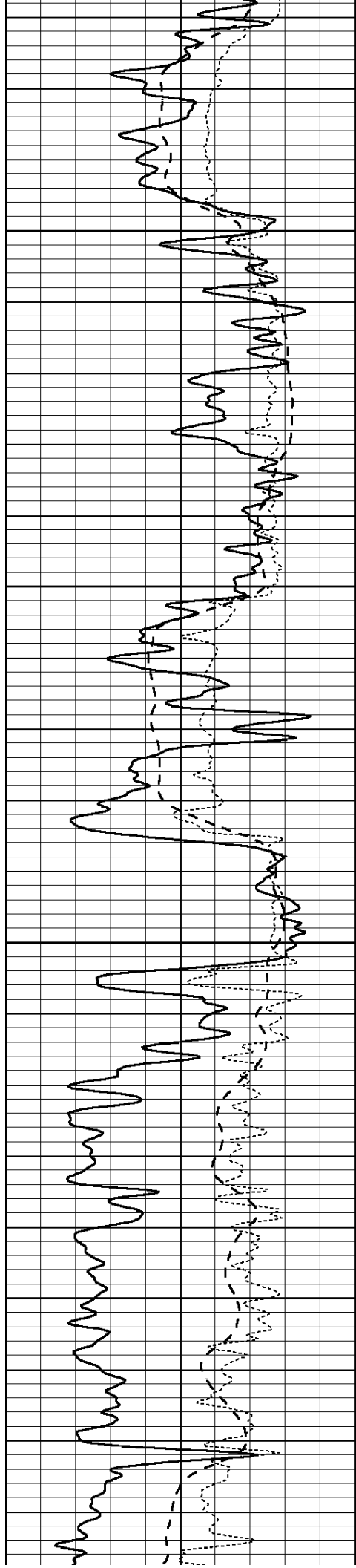
3500

3550

3600

3650



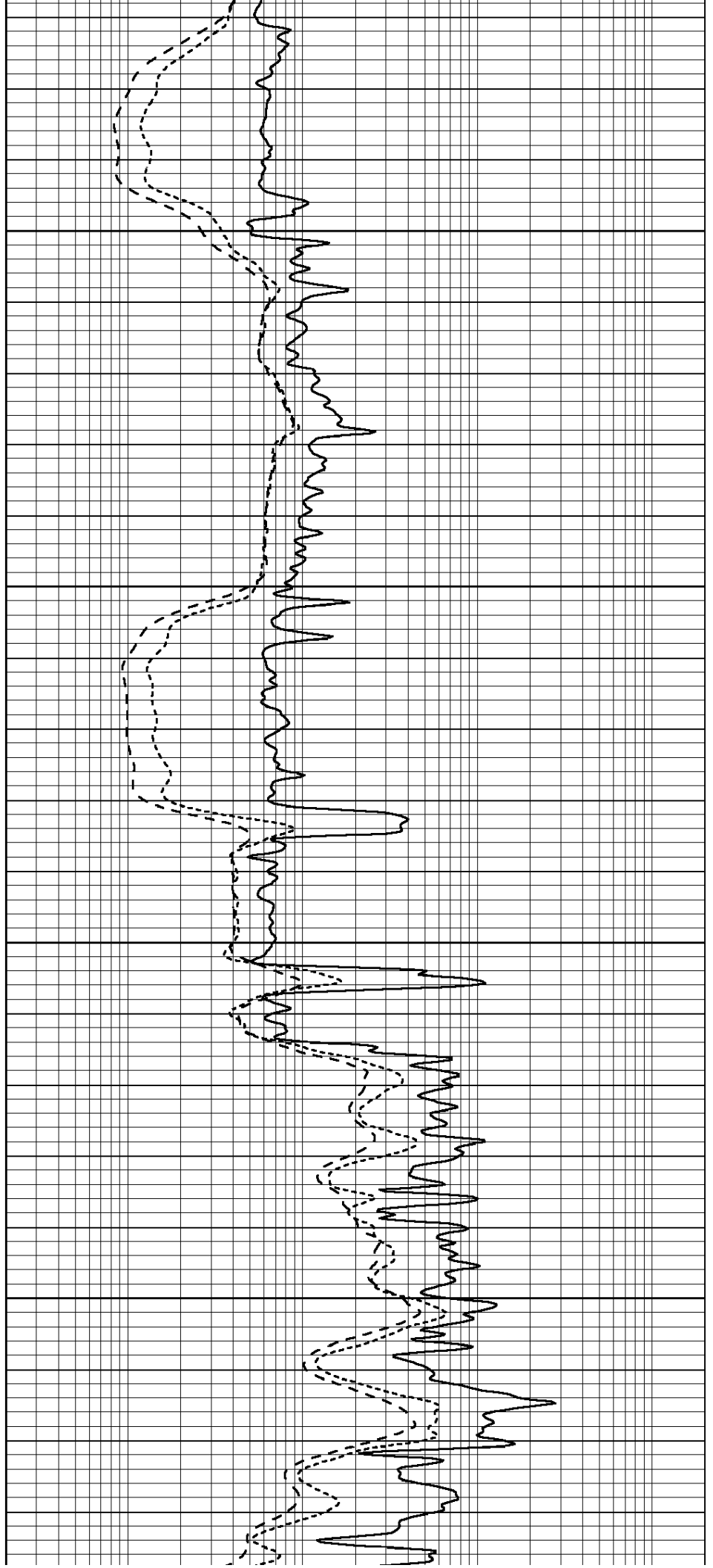


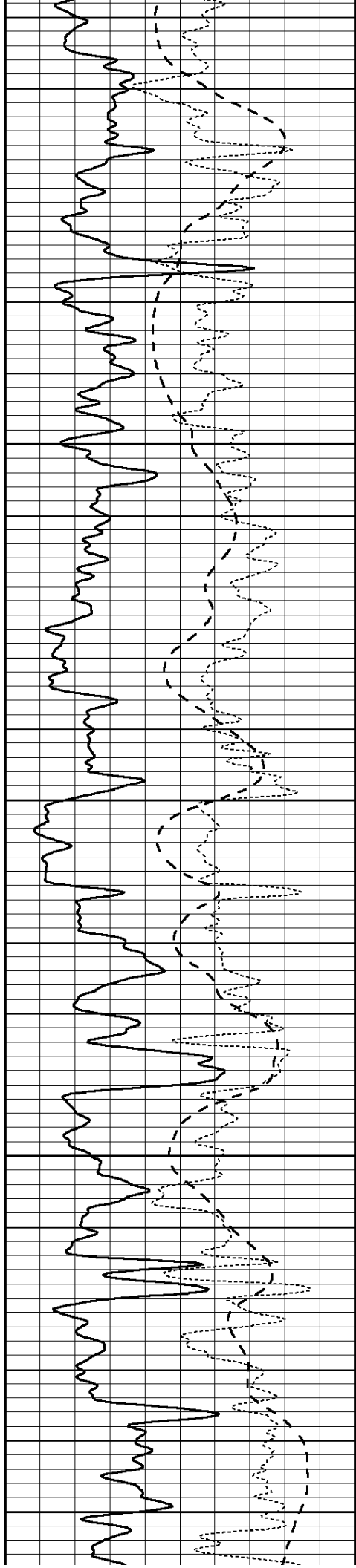
3700

3750

3800

3850





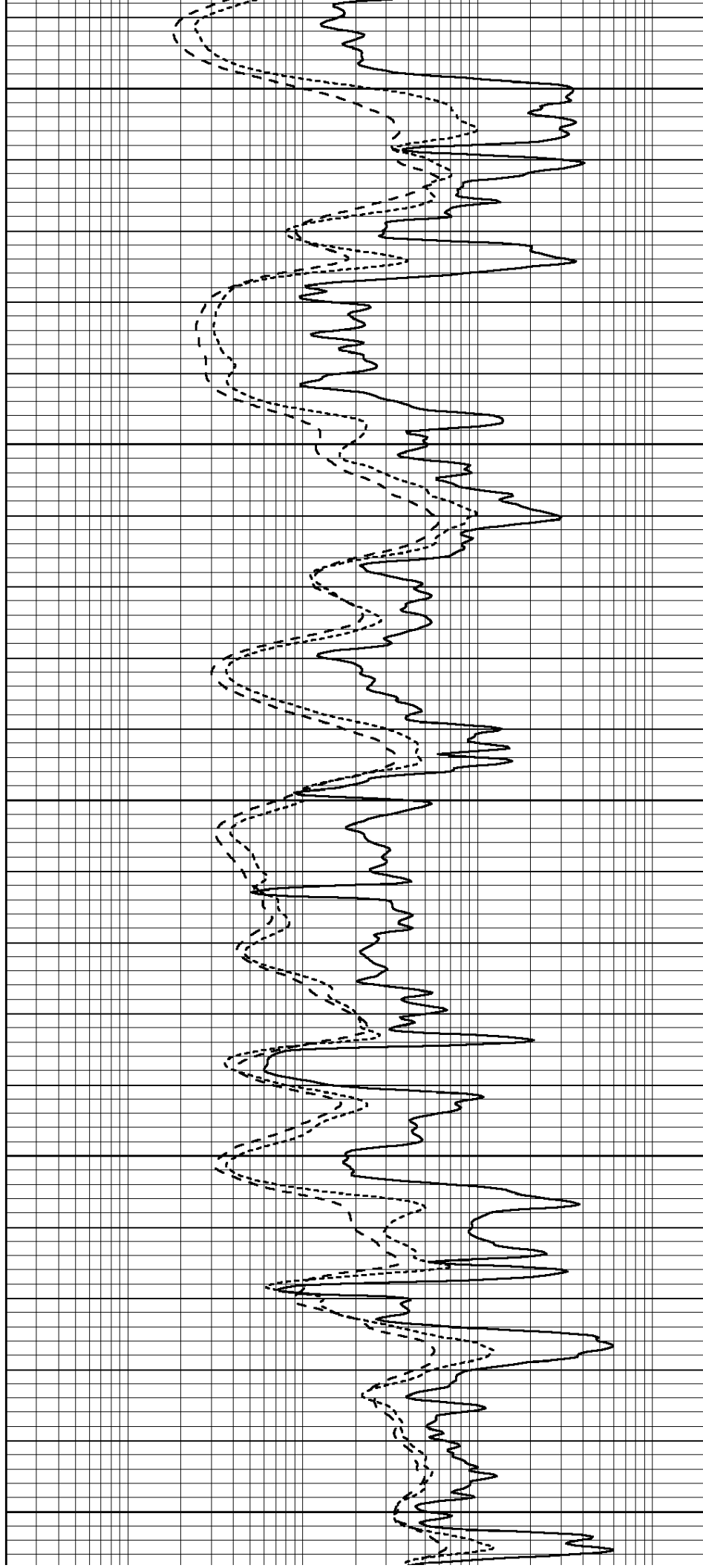
3900

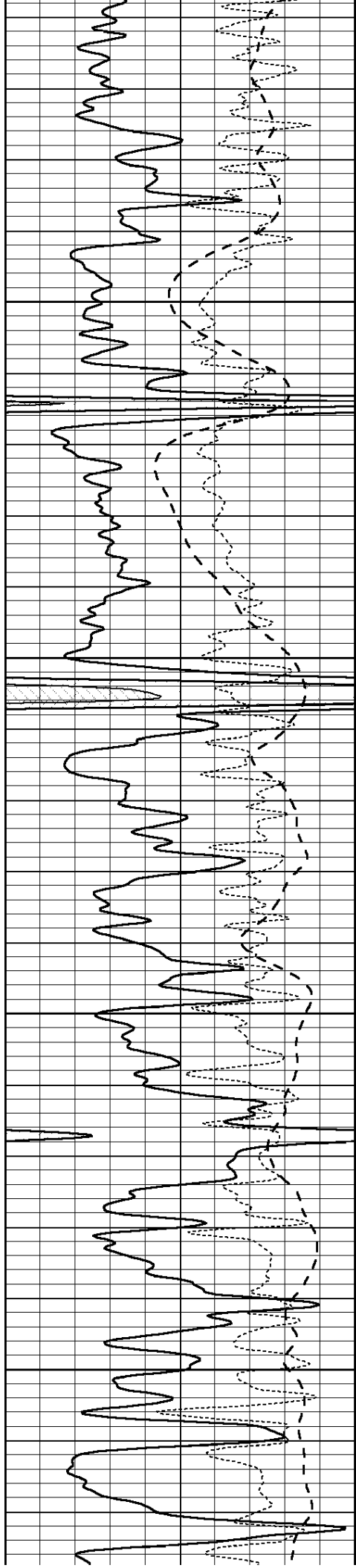
3950

4000

4050

4100



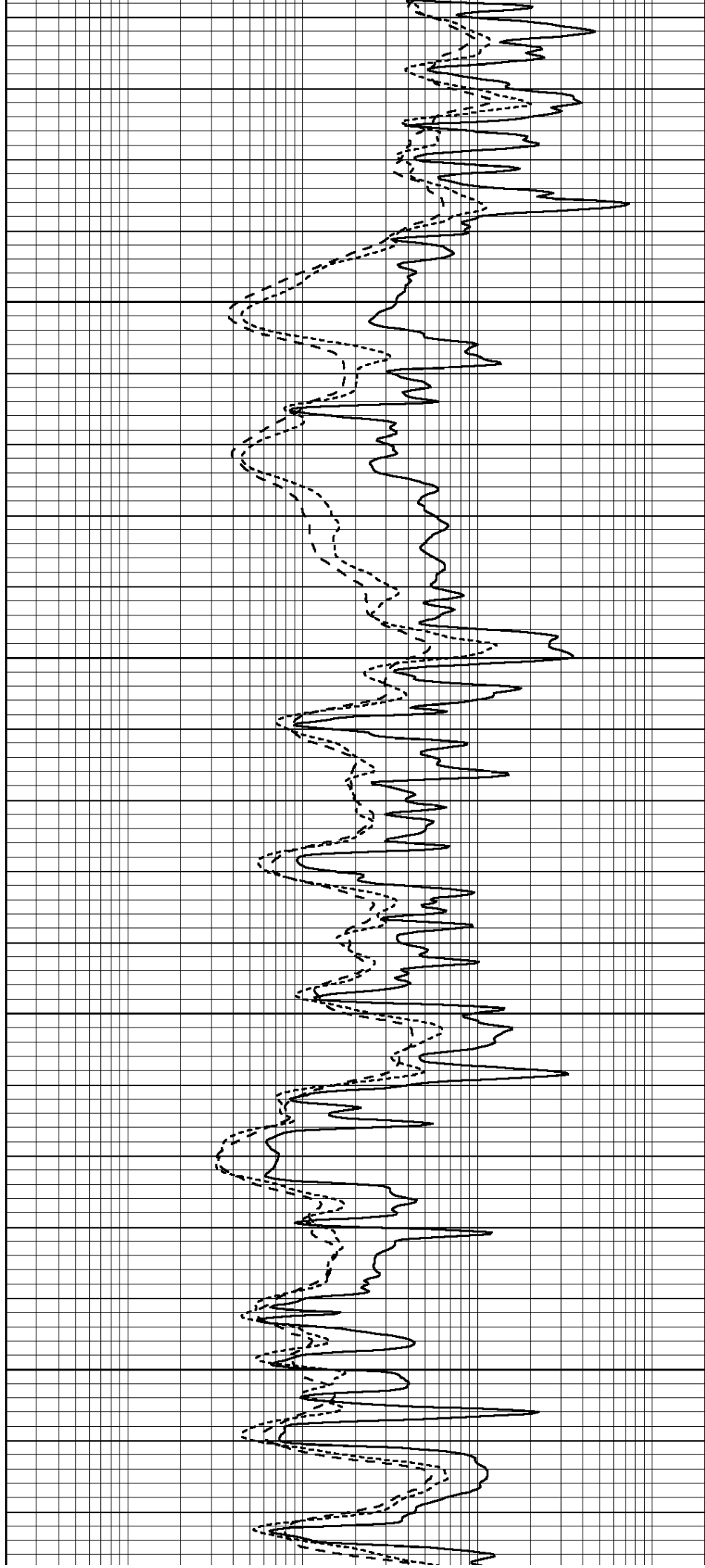


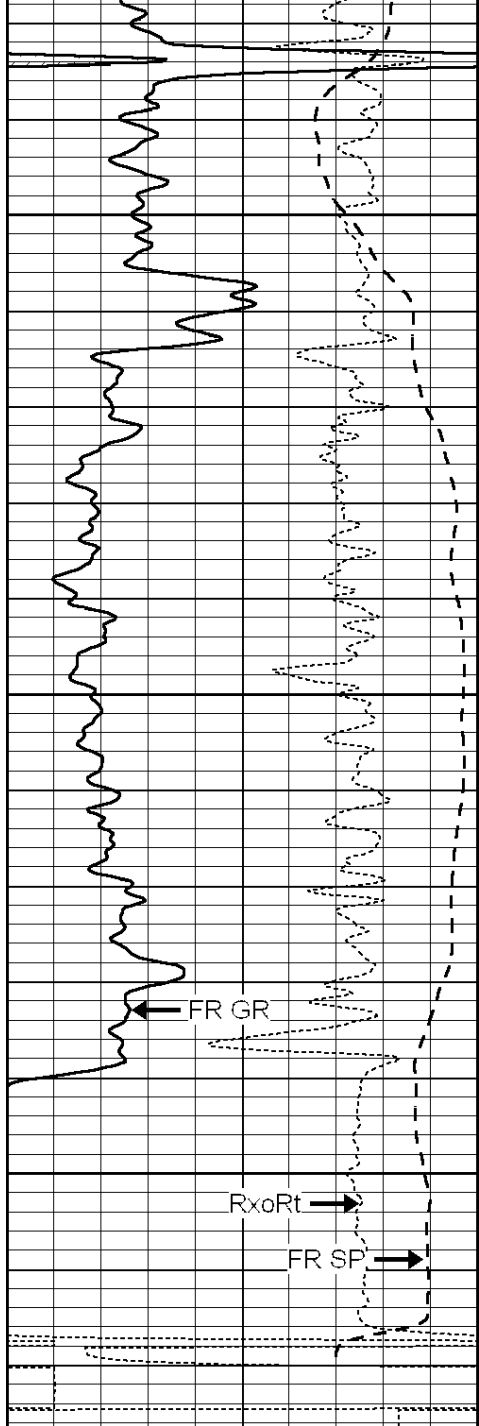
4150

4200

4250

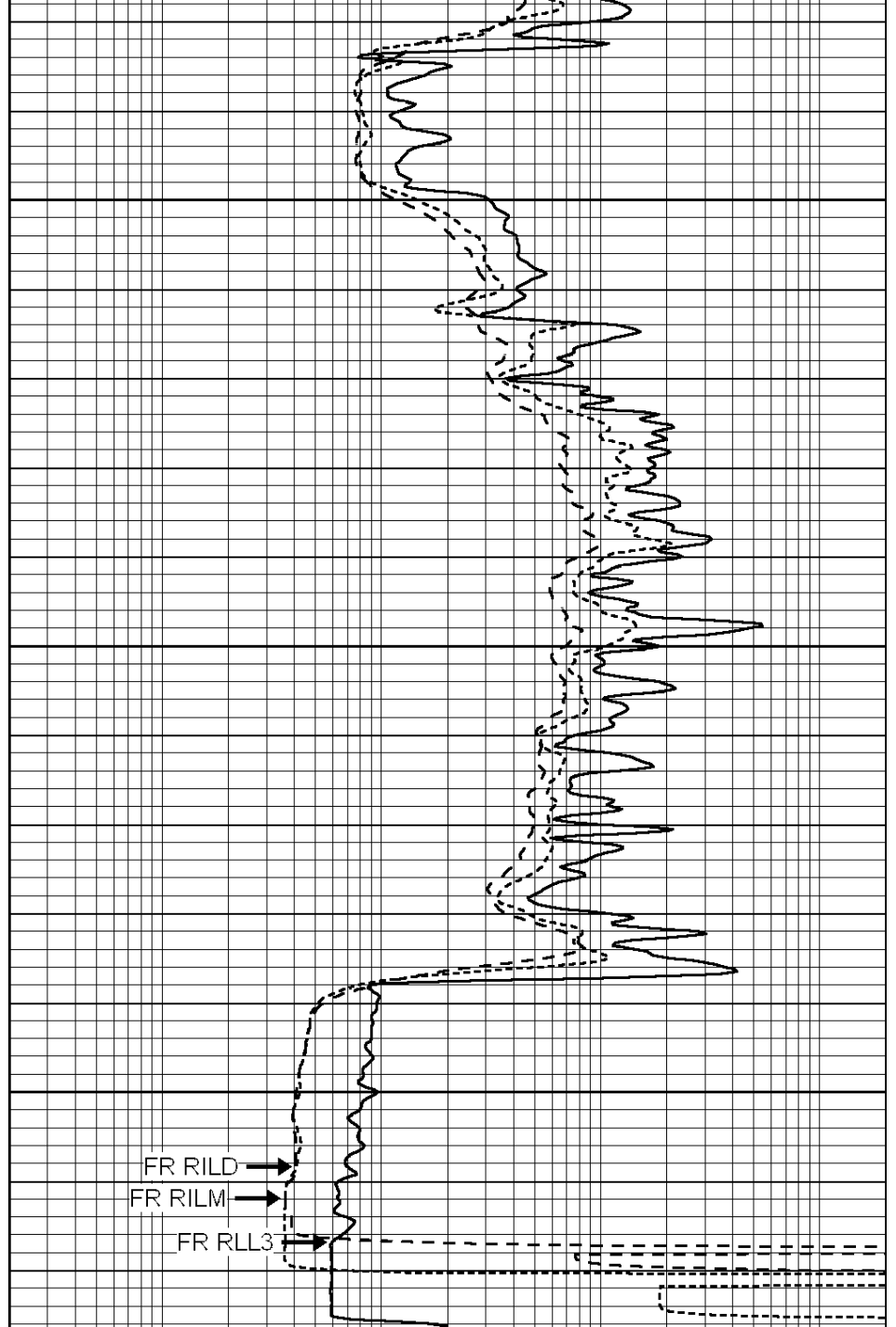
4300





4350
4400
4450
LTD 4469

0	GAMMA RAY (GAPI)	150
-100	SP (mV)	100
-250	Rxo/Rt	50



0.2	SHALLOW GUARD (Ohm-m)	2000
0.2	MEDIUM INDUCTION (Ohm-m)	2000
0.2	DEEP INDUCTION (Ohm-m)	2000



SUPERIOR
Hays,
Kansas

REPEAT SECTION

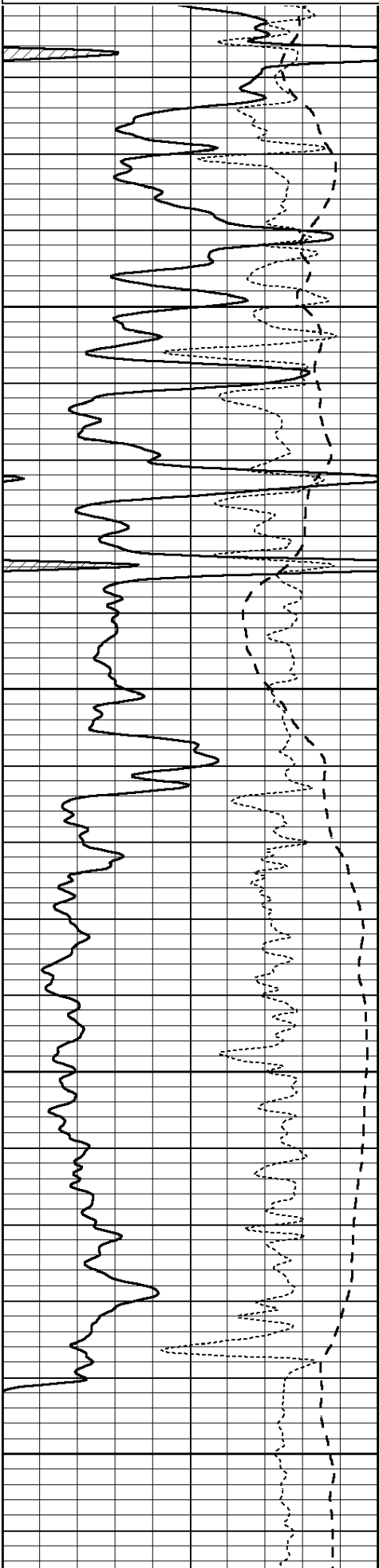
Database File: 006336pe.db
 Dataset Pathname: pass2.2
 Presentation Format: _dil
 Dataset Creation: Sat Apr 09 06:38:01 2011 by Calc Open-Cased 090629
 Charted by: Depth in Feet scaled 1:240

0	GAMMA RAY (GAPI)	150
---	------------------	-----

0.2	SHALLOW GUARD (Ohm-m)	2000
-----	-----------------------	------

-100 SP (mV) 100
-250 Rxo/Rt 50

0.2 MEDIUM INDUCTION (Ohm-m) 2000
0.2 DEEP INDUCTION (Ohm-m) 2000

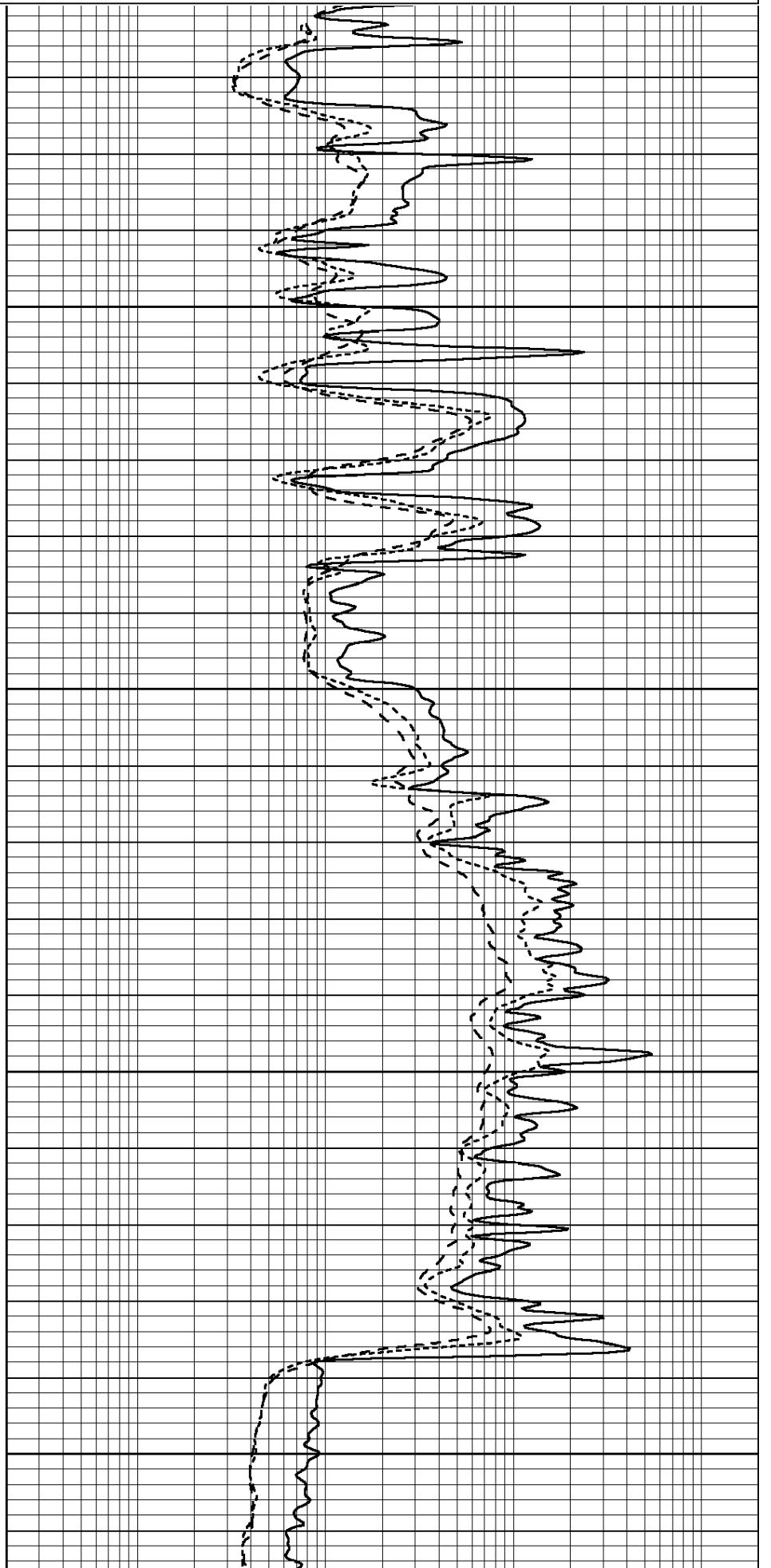


4300

4350

4400

4450



0	GAMMA RAY (GAPI)	150	0.2	SHALLOW GUARD (Ohm-m)	2000
-100	SP (mV)	100	0.2	MEDIUM INDUCTION (Ohm-m)	2000
-250	Rxo/Rt	50	0.2	DEEP INDUCTION (Ohm-m)	2000

Calibration Report

Database File: 006336pe.db
Dataset Pathname: pass3.1
Dataset Creation: Sat Apr 09 06:46:56 2011 by Calc Open-Cased 090629

Dual Induction Calibration Report

Serial-Model: PROBE7-DILG
Surface Cal Performed: Wed Jul 30 06:14:24 2008
Downhole Cal Performed: Mon Jul 28 12:02:56 2008
After Survey Verification Performed: Mon Jul 28 12:02:56 2008

Surface Calibration		Readings			References			Results	
Loop:	Air	Loop		Air	Loop		m	b	
Deep	-0.014	0.629	V	0.000	400.000	mmho/m	621.923	8.759	
Medium	0.039	0.728	V	0.000	464.000	mmho/m	673.322	-26.058	
Internal:	Zero	Cal		Zero	Cal		m	b	
Deep	0.011	0.610	V	0.000	400.000	mmho/m	667.135	-7.256	
Medium	0.005	0.712	V	0.000	464.000	mmho/m	655.677	-3.102	

Downhole Calibration		Readings			References			Results	
	Zero	Cal		Zero	Cal		m'	b'	
Deep	0.000	0.000	mmho/m	14.508	388.384	mmho/m	1.000	0.000	
Medium	0.000	0.000	mmho/m	166.367	504.400	mmho/m	1.000	0.000	
LL3		7.500	V		1400.000	Ohm-m			
		0.000	V		20.000	Ohm-m			
		-7.200	V		4000.000	mmho-m			

After Survey Verification		Readings			Targets			Results	
	Zero	Cal		Zero	Cal		m'	b'	
Deep	0.000	0.000	mmho/m	0.000	0.000	mmho/m	0.000	0.000	
Medium	0.000	0.000	mmho/m	0.000	0.000	mmho/m	0.000	0.000	
LL3		1.000	Ohm-m		1.000	Ohm-m			
		0.000	Ohm-m		0.000	Ohm-m			
		1.000	mmho-m		1.000	mmho-m			

Litho Density Calibration Report
Serial: 002 Model: PRB
Performed Mon Oct 29 15:40:49 2007

Litho Density Calibration		Background	Magnesium	Aluminum	Sandstone	
Window 1		1056.3	9118.0	2809.7	10378.4	cps
Window 2		969.9	7671.9	2431.6	8565.8	cps

Window 3	683.8	2939.8	1161.0	3161.8	cps
Window 4	231.4	231.6	226.7	230.8	cps
Long Space	0.0	6702.0	1461.7	7595.9	cps
Short Space	1.2	1433.6	959.4	1568.6	cps
Rho		1.7100	2.5900	1.3800	g/cc
Pe			2.5700	1.5500	
Rib Angle	: 45.2	Rib Slope	: 1.008	Density/Spine Ratio	: 0.559
Spine Angle	: 75.2	Spine Slope	: 3.791	Spine Intercept	: -18.7

Caliper	Readings	Reference	
Low Ref	2.8	8.0	
High Ref	5.0	14.0	
	Gain: 2.7		Offset: -1.8

Compensated Neutron Calibration Report

Serial Number: 6I
Tool Model: G

CALIBRATION

Detector	Readings	Target	Normalization
Short Space	1.00 cps	1.00 cps	1.0000
Long Space	1.00 cps	1.00 cps	1.0000

Gamma Ray Calibration Report

Serial Number: #8
Tool Model: OPEN
Performed: Fri Feb 18 03:07:29 2011

Calibrator Value: 150.0 GAPI

Background Reading: 0.0 cps
Calibrator Reading: 175.0 cps

Sensitivity: 0.8971 GAPI/cps