



SUPERIOR
Hays,
Kansas

COMPENSATED
DENSITY/NEUTRON
PE LOG

Company WHITE EXPLORATION, INC.
Well CHAIN RANCH #3
Field AMBER CREEK SOUTHEAST
County BARBER
State KANSAS

Company WHITE EXPLORATION, INC.
Well CHAIN RANCH #3
Field AMBER CREEK SOUTHEAST
County BARBER State KANSAS

Location: API # : 15-007-23672-0000
1095' FSL & 1650' FWL

SEC 6 TWP 31S RGE 11W

Permanent Datum GROUND LEVEL Elevation 1678
Log Measured From KELLY BUSHING 10' A.G.L.
Drilling Measured From KELLY BUSHING

Other Services
DIL/MEL
SONIC
Elevation
K.B. 1688
D.F. 1686
G.L. 1678

Date	4/9/11		
Run Number	ONE		
Depth Driller	4475		
Depth Logger	4469		
Bottom Logged Interval	4445		
Top Log Interval	3400		
Casing Driller	8 5/8" @ 322		
Casing Logger	322		
Bit Size	7 7/8		
Type Fluid in Hole	CHEMICAL MUD	CHLORIDES 7000 PPM	
Density / Viscosity	9.2/46		
pH / Fluid Loss	9.0/10.8		
Source of Sample	FLOWLINE		
Rim @ Meas. Temp	.60 @ 98F		
Rmf @ Meas. Temp	.45 @ 98F		
Rmc @ Meas. Temp	.72 @ 98F		
Source of Rmf / Rmc	MEASURED		
Rim @ BHT	.49 @ 120F		
Time Circulation Stopped	2 HOURS		
Time Logger on Bottom			
Maximum Recorded Temperature	120F		
Equipment Number	680		
Location	HAYS, KS.		
Recorded By	JASON CAPPELLUCCI		
Witnessed By	RYAN DIXON		

<<< Fold Here >>>

All interpretations are opinions based on inferences from electrical or other measurements and we cannot and do not guarantee the accuracy or correctness of any interpretation, and we shall not, except in the case of gross or willful negligence on our part, be liable or responsible for any loss, costs, damages, or expenses incurred or sustained by anyone resulting from any interpretation made by any of our officers, agents or employees. These interpretations are also subject to our general terms and conditions set out in our current Price Schedule.

Comments

THANK YOU FOR USING SUPERIOR WELL SERVICE (785) 628-6395
DIRECTIONS
MEDICINE LODGE, KS - E. TO ISABEL RD. - 8 N. TO CHAIN RANCH
W. INTO, STAY LEFT AT 3 FORKS, 4TH FORK STAY RIGHT INTO

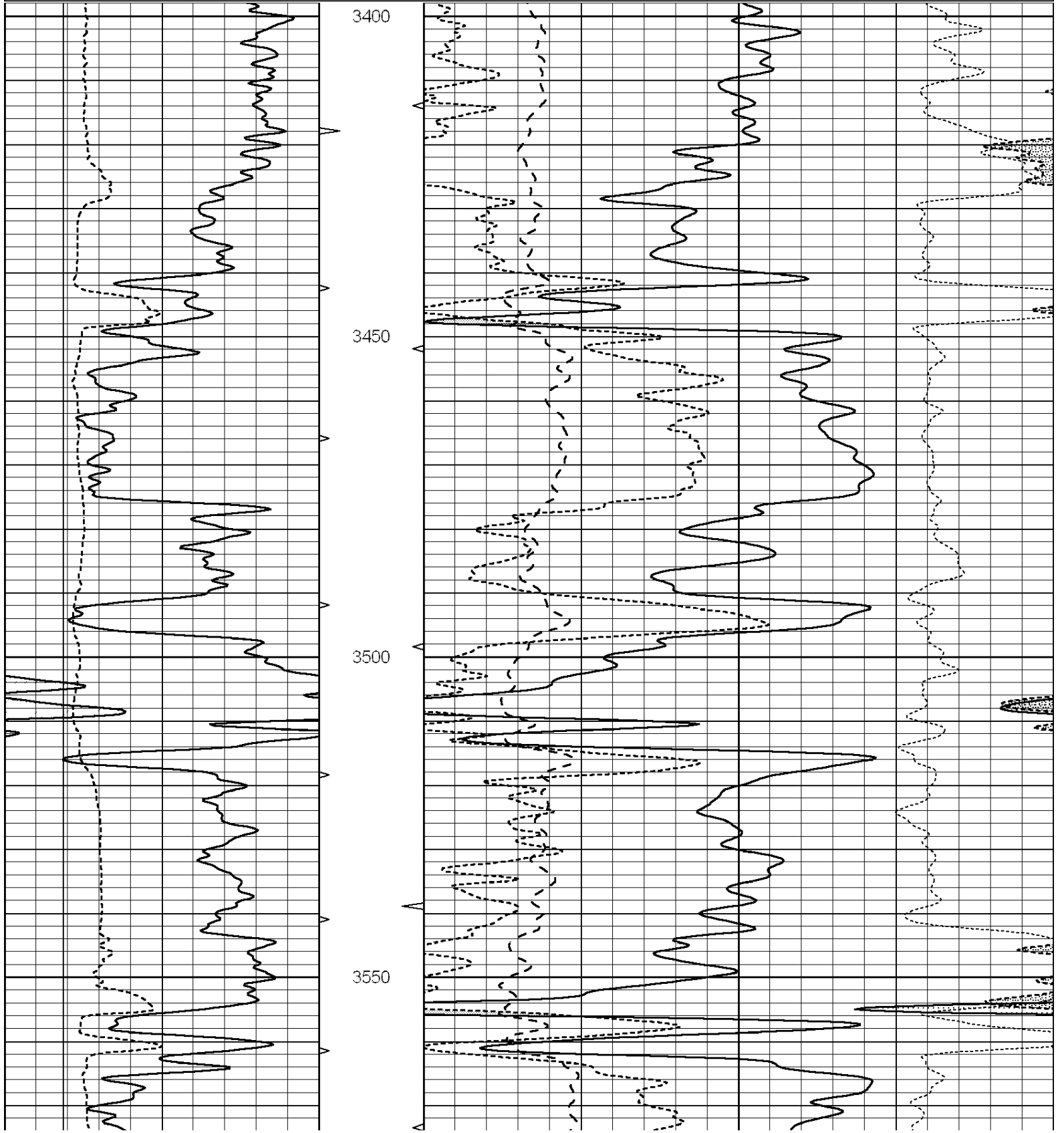


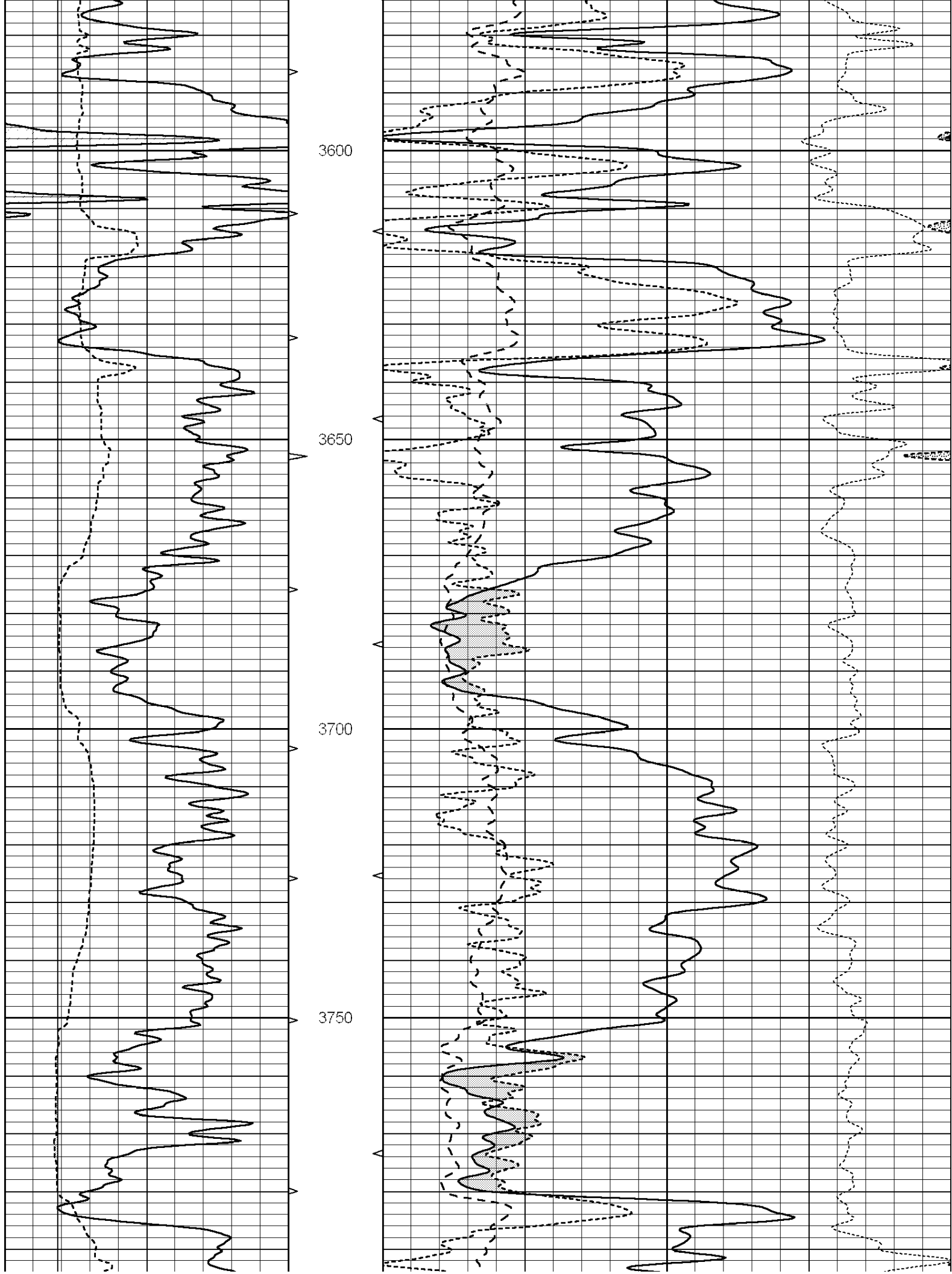
SUPERIOR
Hays,
Kansas

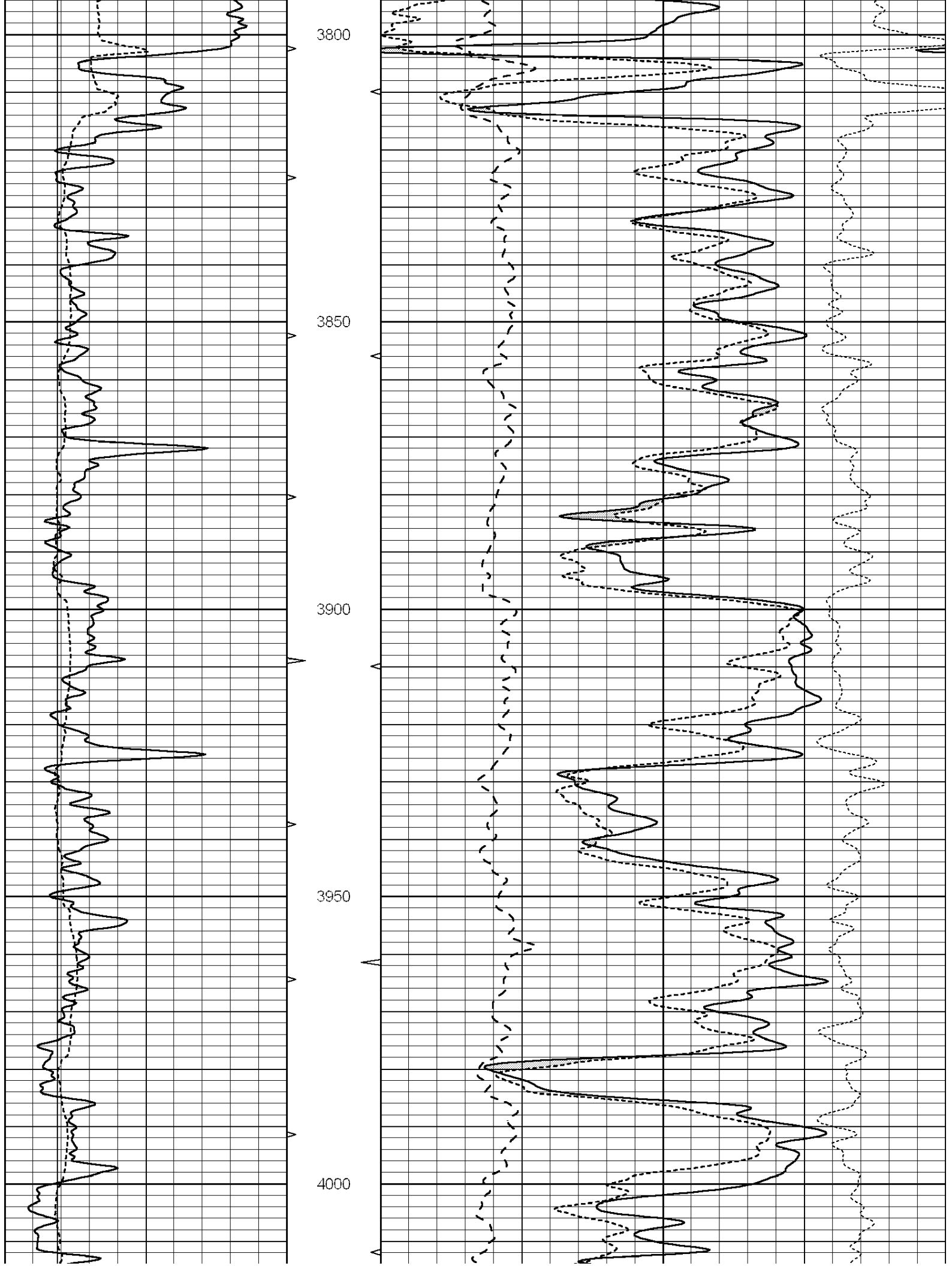
MAIN SECTION

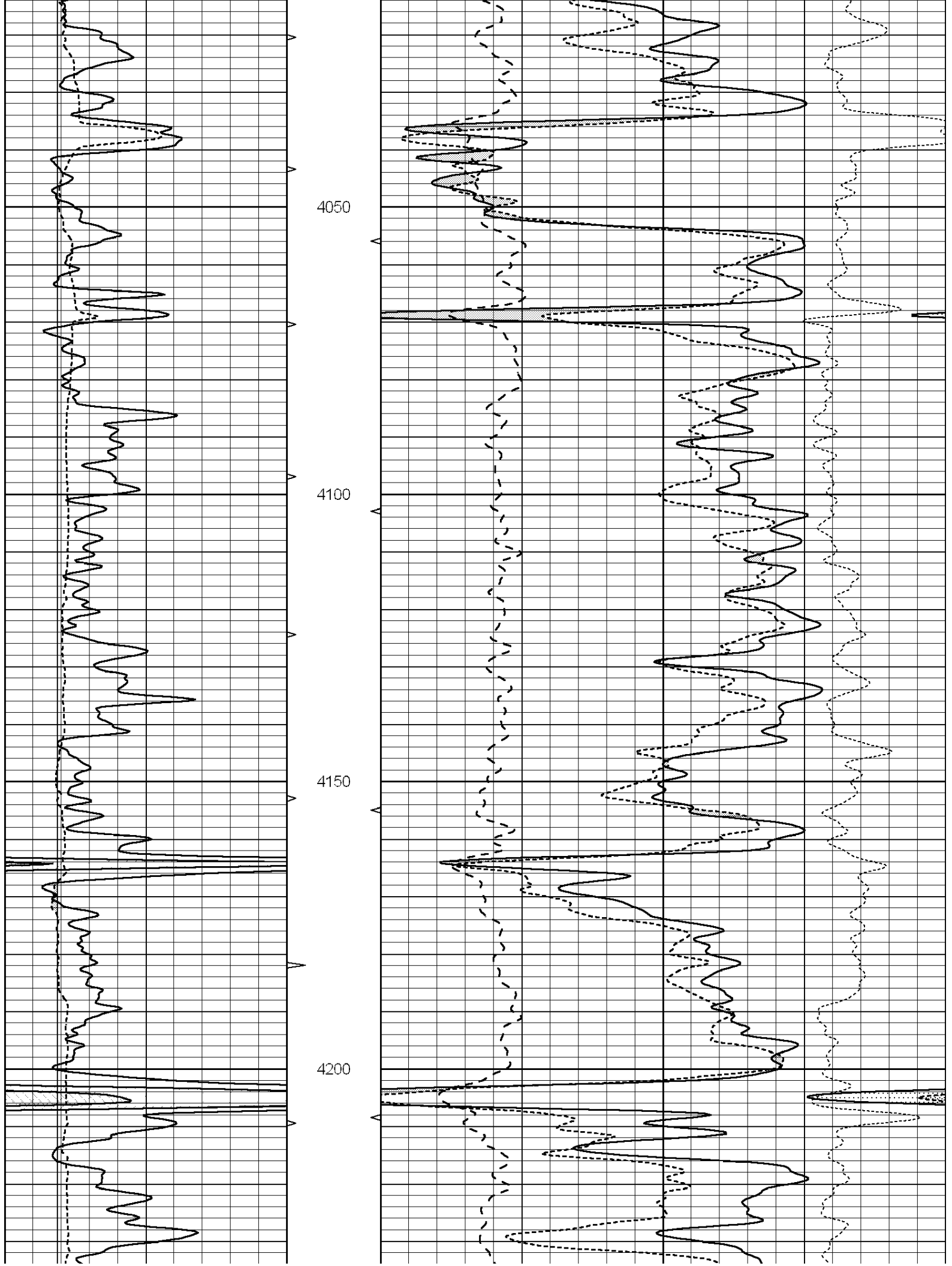
Database File: 006336pe.db
 Dataset Pathname: pass3.1
 Presentation Format: _ldt_neu
 Dataset Creation: Sat Apr 09 06:46:56 2011 by Calc Open-Cased 090629
 Charted by: Depth in Feet scaled 1:240

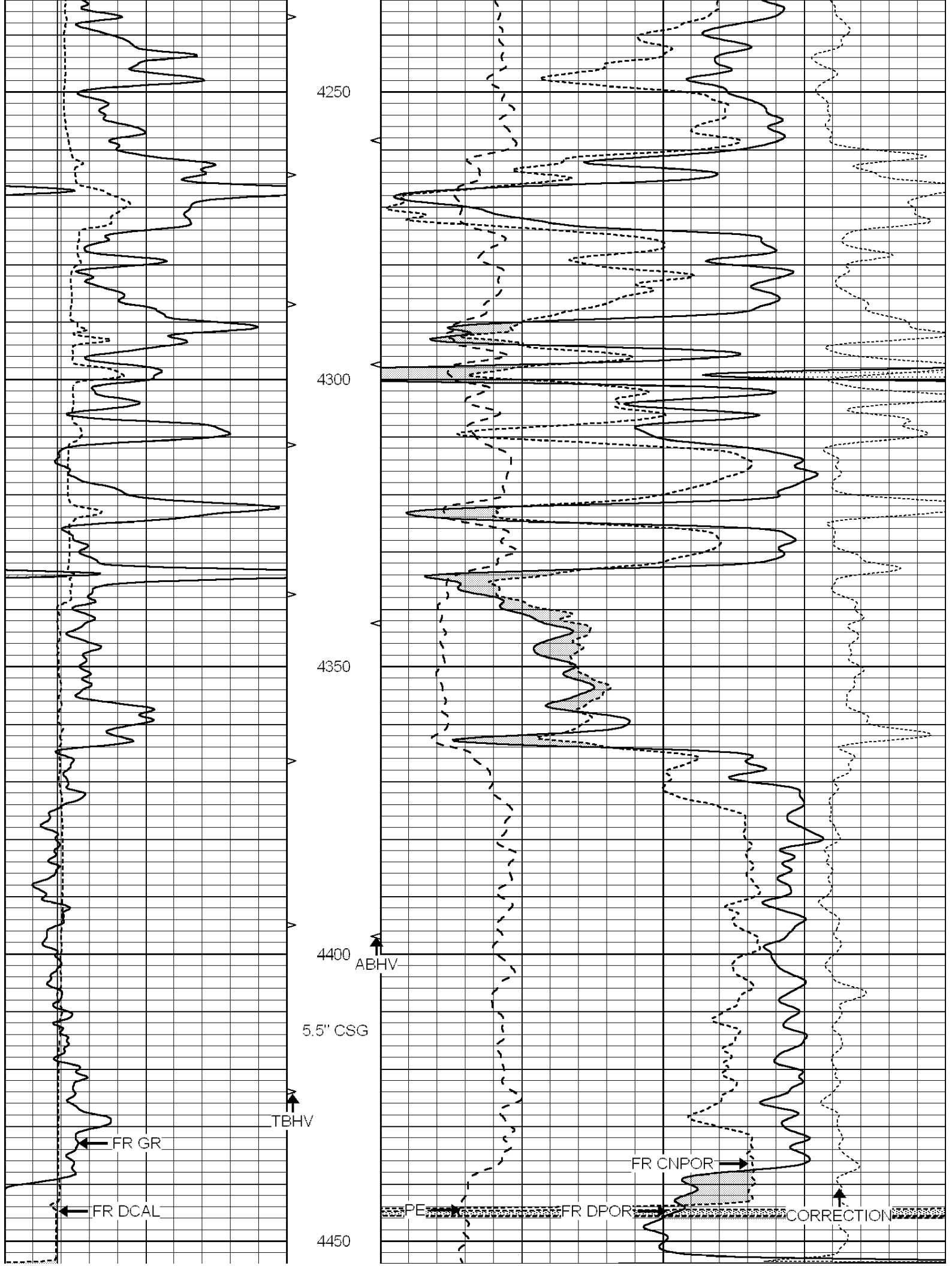
0	GAMMA RAY (GAPI)	150	ABHV	30	COMPENSATED DENSITY (pu)	-10			
6	CALIPER (in)	16	10 (ft3)	0	30	COMPENSATED NEUTRON (pu)	-10		
			TBHV	0	PE	10	-0.25	CORRECTION (g/cc)	0.25
			0 (ft3)	10					











2.71 LIMESTONE MATRIX

LTD 4469

0	GAMMA RAY (GAPI)	150	ABHV	30	COMPENSATED DENSITY (pu)	-10			
6	CALIPER (in)	16	10 (ft3)	0	30	COMPENSATED NEUTRON (pu)	-10		
			TBHV	0	PE	10	-0.25	CORRECTION (g/cc)	0.25
			0 (ft3)	10					

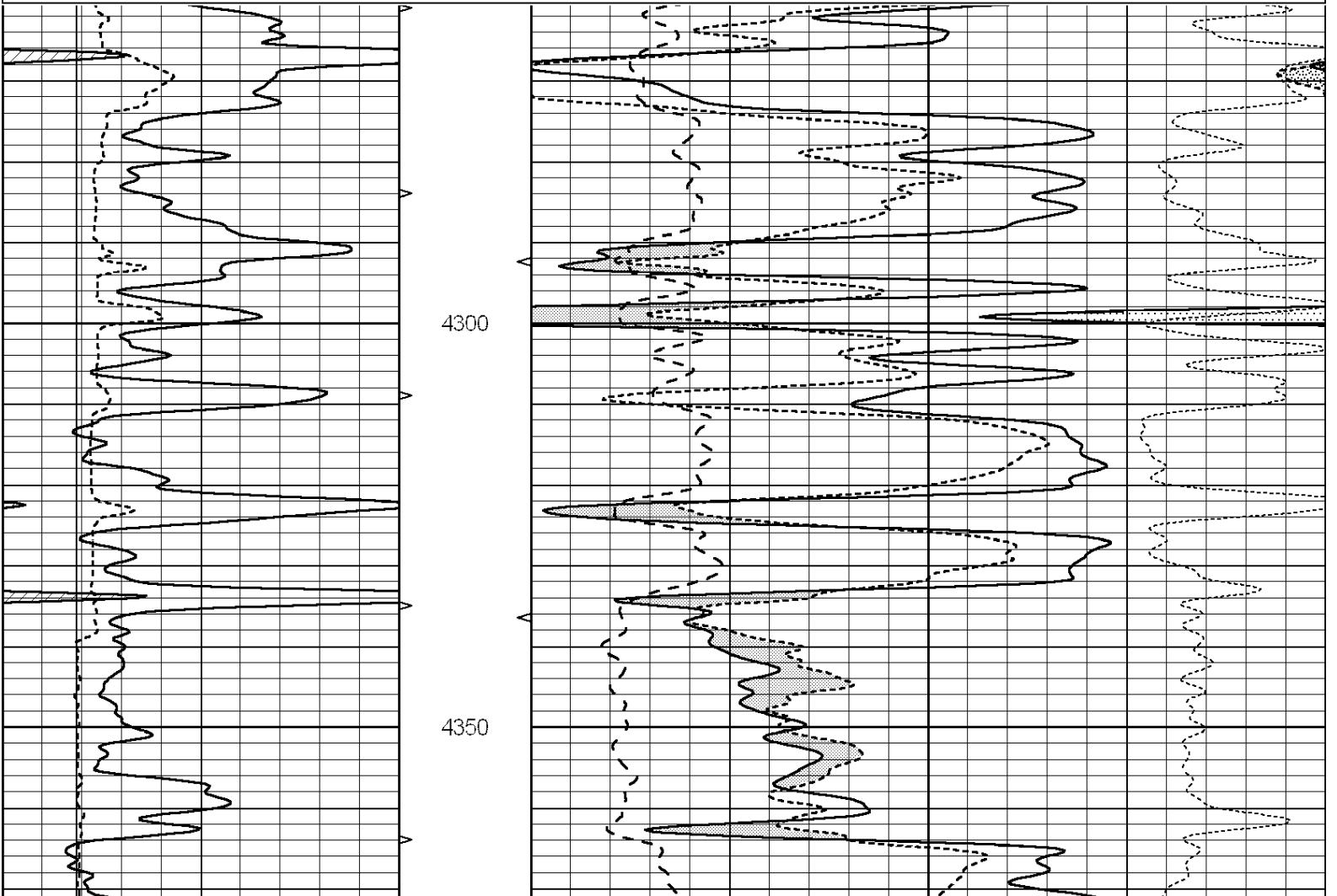


SUPERIOR
Hays,
Kansas

REPEAT SECTION

Database File: 006336pe.db
 Dataset Pathname: pass2.2
 Presentation Format: _ldt_neu
 Dataset Creation: Sat Apr 09 06:38:01 2011 by Calc Open-Cased 090629
 Charted by: Depth in Feet scaled 1:240

0	GAMMA RAY (GAPI)	150	ABHV	30	COMPENSATED DENSITY (pu)	-10			
6	CALIPER (in)	16	10 (ft3)	0	30	COMPENSATED NEUTRON (pu)	-10		
			TBHV	0	PE	10	-0.25	CORRECTION (g/cc)	0.25
			0 (ft3)	10					



	Zero	Cal		Zero	Cal		m'	b'
Deep	0.000	0.000	mmho/m	14.508	388.384	mmho/m	1.000	0.000
Medium	0.000	0.000	mmho/m	166.367	504.400	mmho/m	1.000	0.000
LL3		7.500	V		1400.000	Ohm-m		
		0.000	V		20.000	Ohm-m		
		-7.200	V		4000.000	mmho-m		

After Survey Verification								
	Readings			Targets			Results	
	Zero	Cal		Zero	Cal		m'	b'
Deep	0.000	0.000	mmho/m	0.000	0.000	mmho/m	0.000	0.000
Medium	0.000	0.000	mmho/m	0.000	0.000	mmho/m	0.000	0.000
LL3		1.000	Ohm-m		1.000	Ohm-m		
		0.000	Ohm-m		0.000	Ohm-m		
		1.000	mmho-m		1.000	mmho-m		

Litho Density Calibration Report
 Serial: 002 Model: PRB
 Performed Mon Oct 29 15:40:49 2007

Litho Density Calibration					
	Background	Magnesium	Aluminum	Sandstone	
Window 1	1056.3	9118.0	2809.7	10378.4	cps
Window 2	969.9	7671.9	2431.6	8565.8	cps
Window 3	683.8	2939.8	1161.0	3161.8	cps
Window 4	231.4	231.6	226.7	230.8	cps
Long Space	0.0	6702.0	1461.7	7595.9	cps
Short Space	1.2	1433.6	959.4	1568.6	cps
Rho		1.7100	2.5900	1.3800	g/cc
Pe			2.5700	1.5500	
Rib Angle	: 45.2	Rib Slope	: 1.008	Density/Spine Ratio	: 0.559
Spine Angle	: 75.2	Spine Slope	: 3.791	Spine Intercept	: -18.7

Caliper		
	Readings	Reference
Low Ref	2.8	8.0
High Ref	5.0	14.0
	Gain: 2.7	Offset: -1.8

Compensated Neutron Calibration Report

Serial Number: 6I
 Tool Model: G

CALIBRATION						
	Detector	Readings		Target		Normalization
	Short Space	1.00	cps	1.00	cps	1.0000
	Long Space	1.00	cps	1.00	cps	1.0000

Gamma Ray Calibration Report

Serial Number: #8
 Tool Model: OPEN
 Performed: Fri Feb 18 03:07:29 2011

Calibrator Value: 150.0 GAPI

Background Reading: 0.0 cps
 Calibrator Reading: 175.0 cps

Sensitivity:

0.8971

GAPI/cps