



SUPERIOR
Hays,
Kansas

SONIC
LOG

Company WHITE EXPLORATION, INC.
Well CHAIN RANCH #3
Field AMBER CREEK SOUTHEAST
County BARBER
State KANSAS

Company WHITE EXPLORATION, INC.
Well CHAIN RANCH #3
Field AMBER CREEK SOUTHEAST
County BARBER State KANSAS

Location: API # : 15-007-23672-0000
1095' FSL & 1650' FWL

SEC 6 TWP 31S RGE 11W

Permanent Datum GROUND LEVEL Elevation 1678
Log Measured From KELLY BUSHING 10' A.G.L.
Drilling Measured From KELLY BUSHING

Other Services
CDL/CNL/PE
DIL/MEL

Elevation
K.B. 1688
D.F. 1686
G.L. 1678

Date	4/9/11
Run Number	TWO
Depth Driller	4475
Depth Logger	4469
Bottom Logged Interval	4459
Top Log Interval	300
Casing Driller	8 5/8" @ 322
Casing Logger	322
Bit Size	7 7/8
Type Fluid in Hole	CHEMICAL MUD
Density / Viscosity	9.2/46
pH / Fluid Loss	9.0/10.8
Source of Sample	FLOWLINE
Rim @ Meas. Temp	.60 @ 98F
Rmf @ Meas. Temp	.45 @ 98F
Rmc @ Meas. Temp	.72 @ 98F
Source of Rmf / Rmc	MEASURED
Rim @ BHT	.49 @ 120F
Time Circulation Stopped	2 HOURS
Time Logger on Bottom	
Maximum Recorded Temperature	120F
Equipment Number	680
Location	HAYS, KS.
Recorded By	JASON CAPPELLUCCI
Witnessed By	RYAN DIXON

<<< Fold Here >>>

All interpretations are opinions based on inferences from electrical or other measurements and we cannot and do not guarantee the accuracy or correctness of any interpretation, and we shall not, except in the case of gross or willful negligence on our part, be liable or responsible for any loss, costs, damages, or expenses incurred or sustained by anyone resulting from any interpretation made by any of our officers, agents or employees. These interpretations are also subject to our general terms and conditions set out in our current Price Schedule.

Comments

THANK YOU FOR USING SUPERIOR WELL SERVICE (785) 628-6395
DIRECTIONS
MEDICINE LODGE, KS - E. TO ISABEL RD. - 8 N. TO CHAIN RANCH
W. INTO, STAY LEFT AT 3 FORKS, 4TH FORK STAY RIGHT INTO

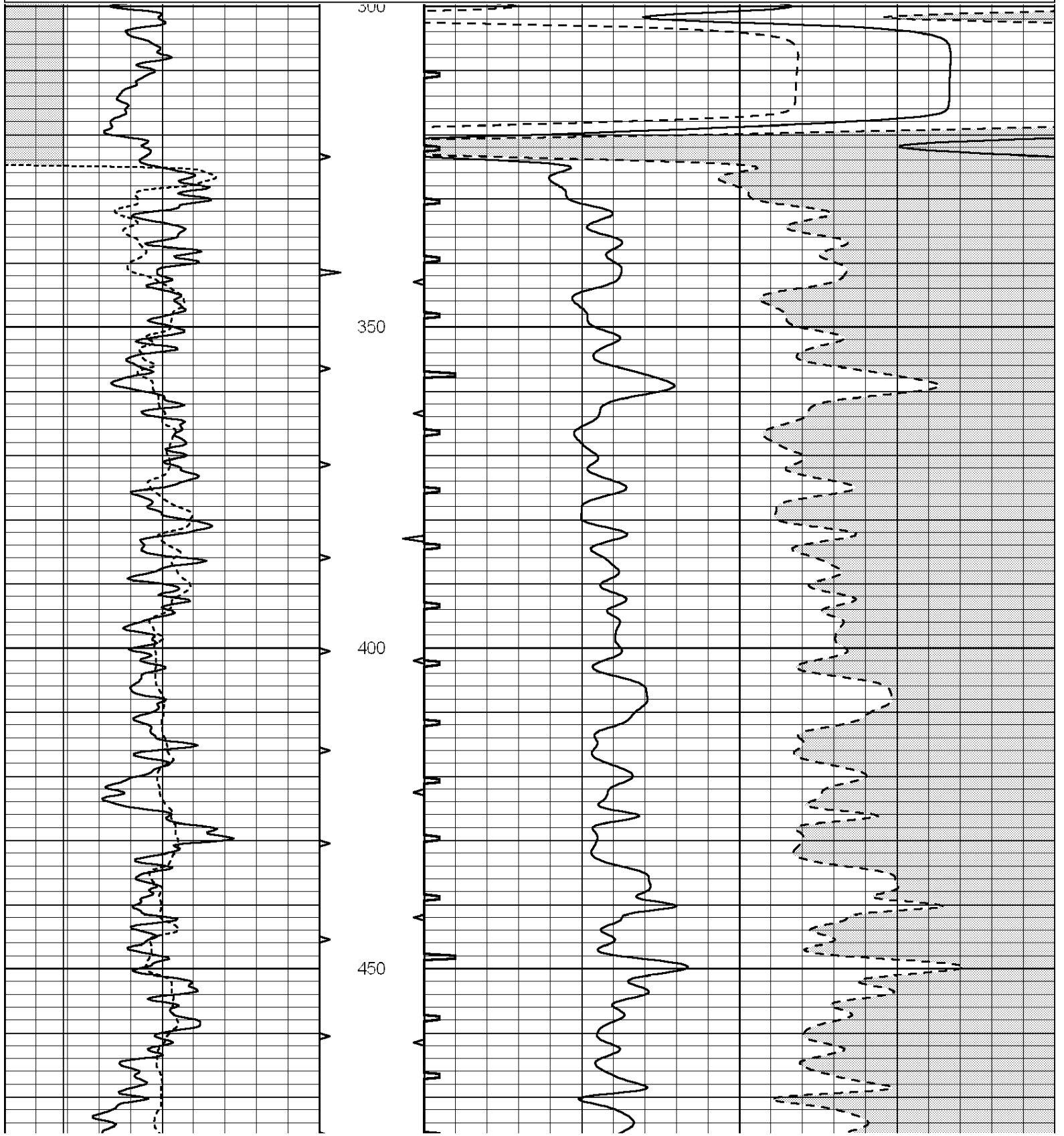


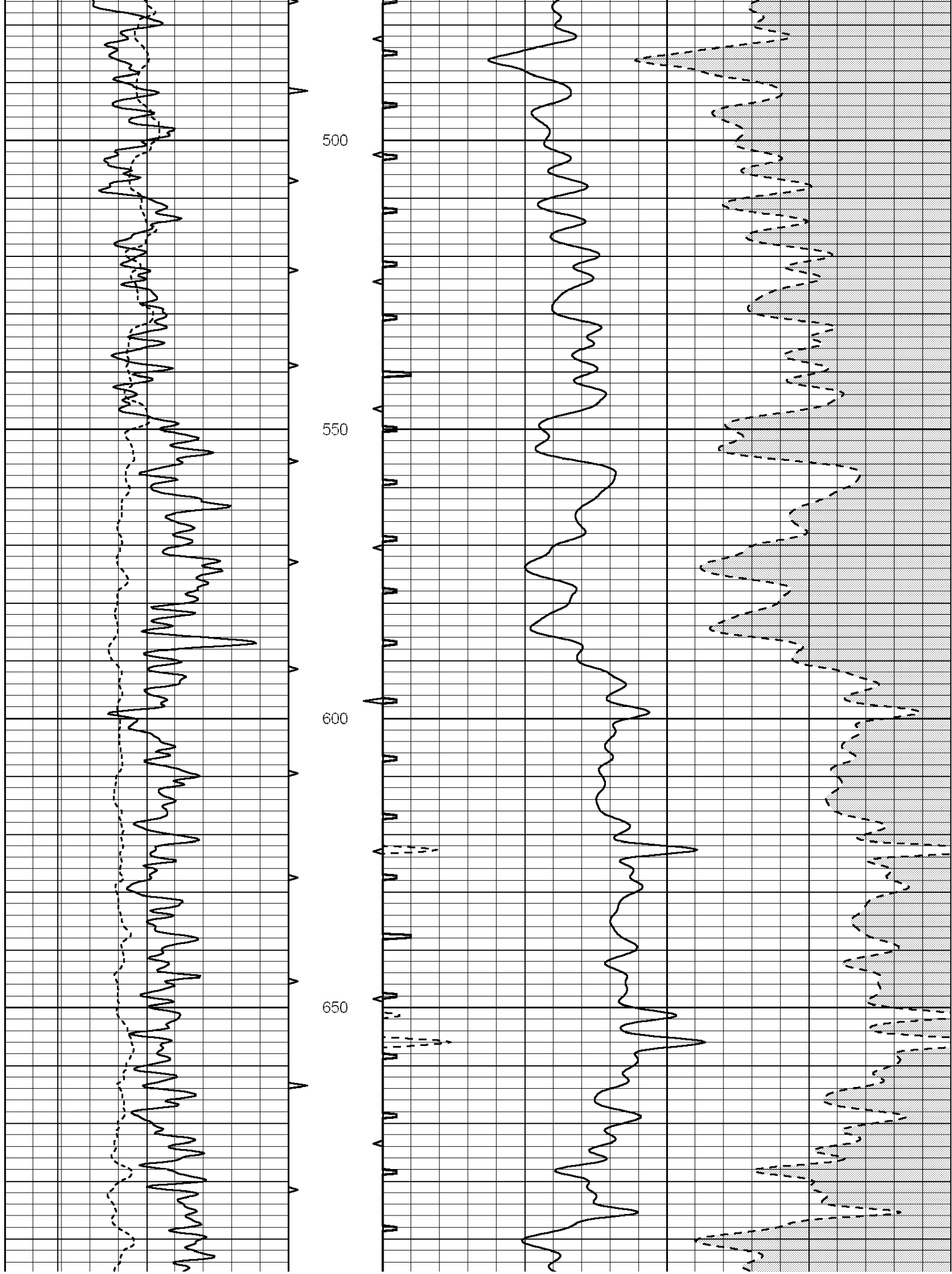
SUPERIOR
Hays,
Kansas

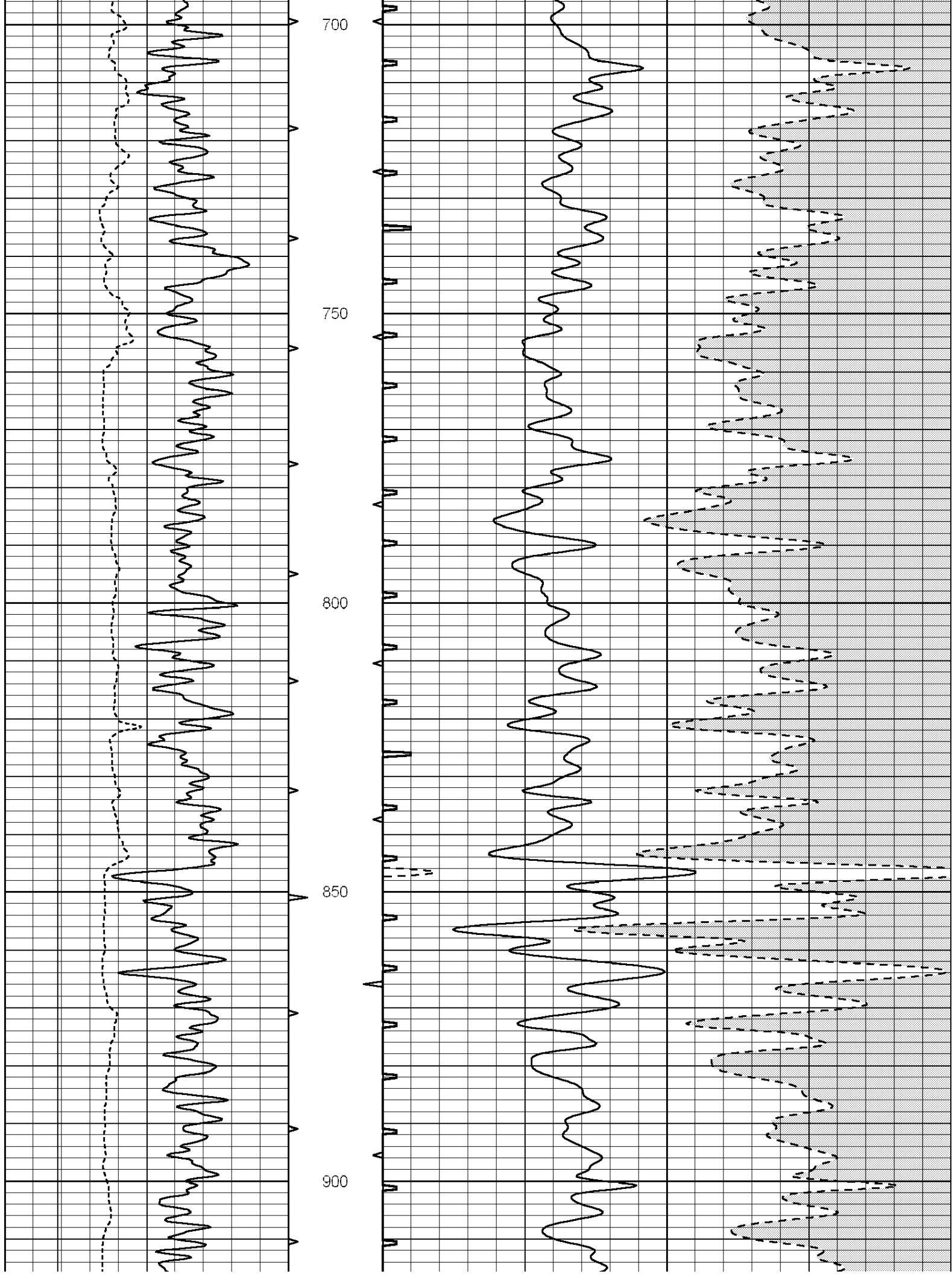
MAIN SECTION

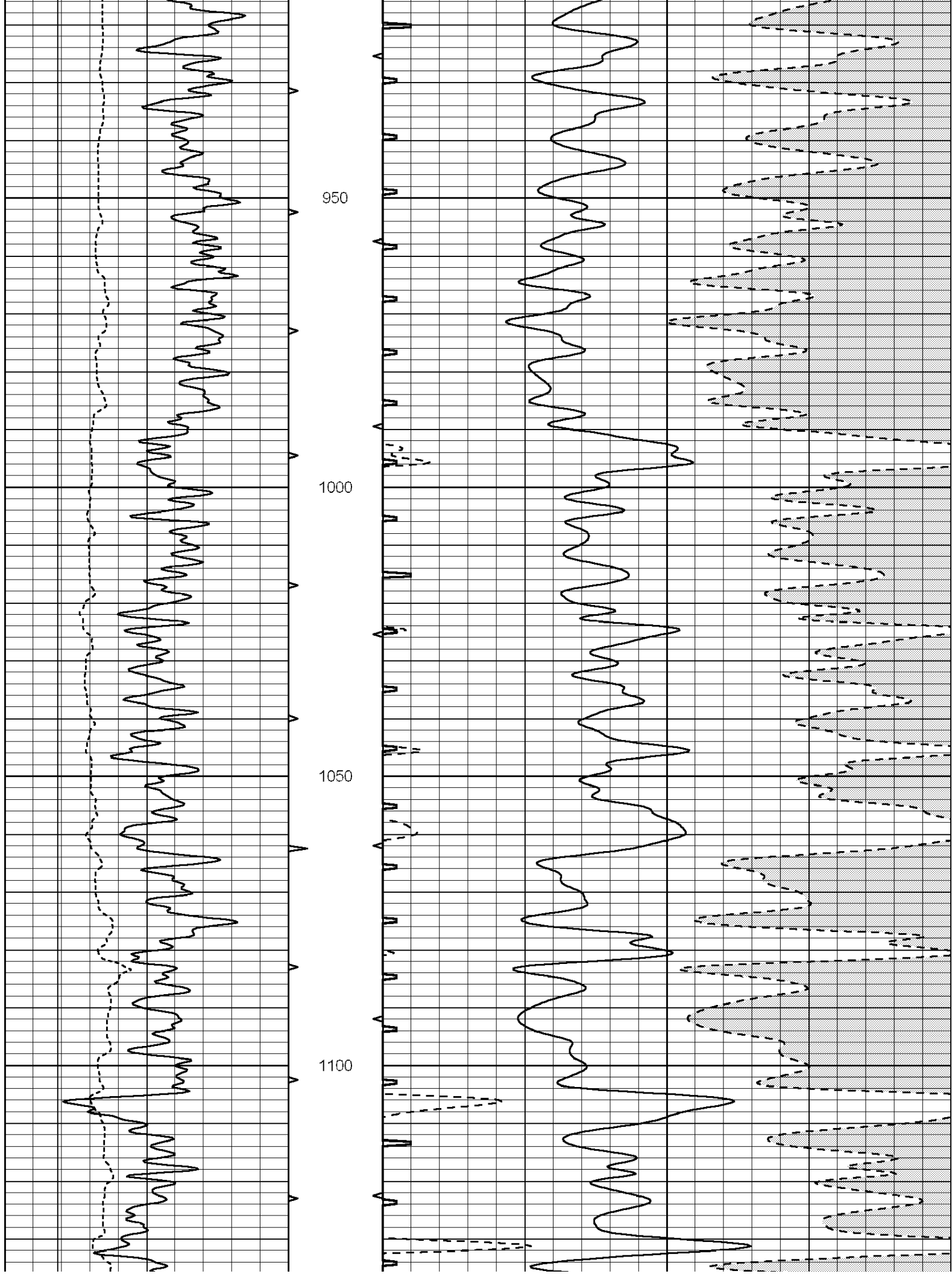
Database File: 006336pe.db
 Dataset Pathname: pass6.2
 Presentation Format: _slt
 Dataset Creation: Sat Apr 09 09:18:34 2011 by Calc Open-Cased 090629
 Charted by: Depth in Feet scaled 1:240

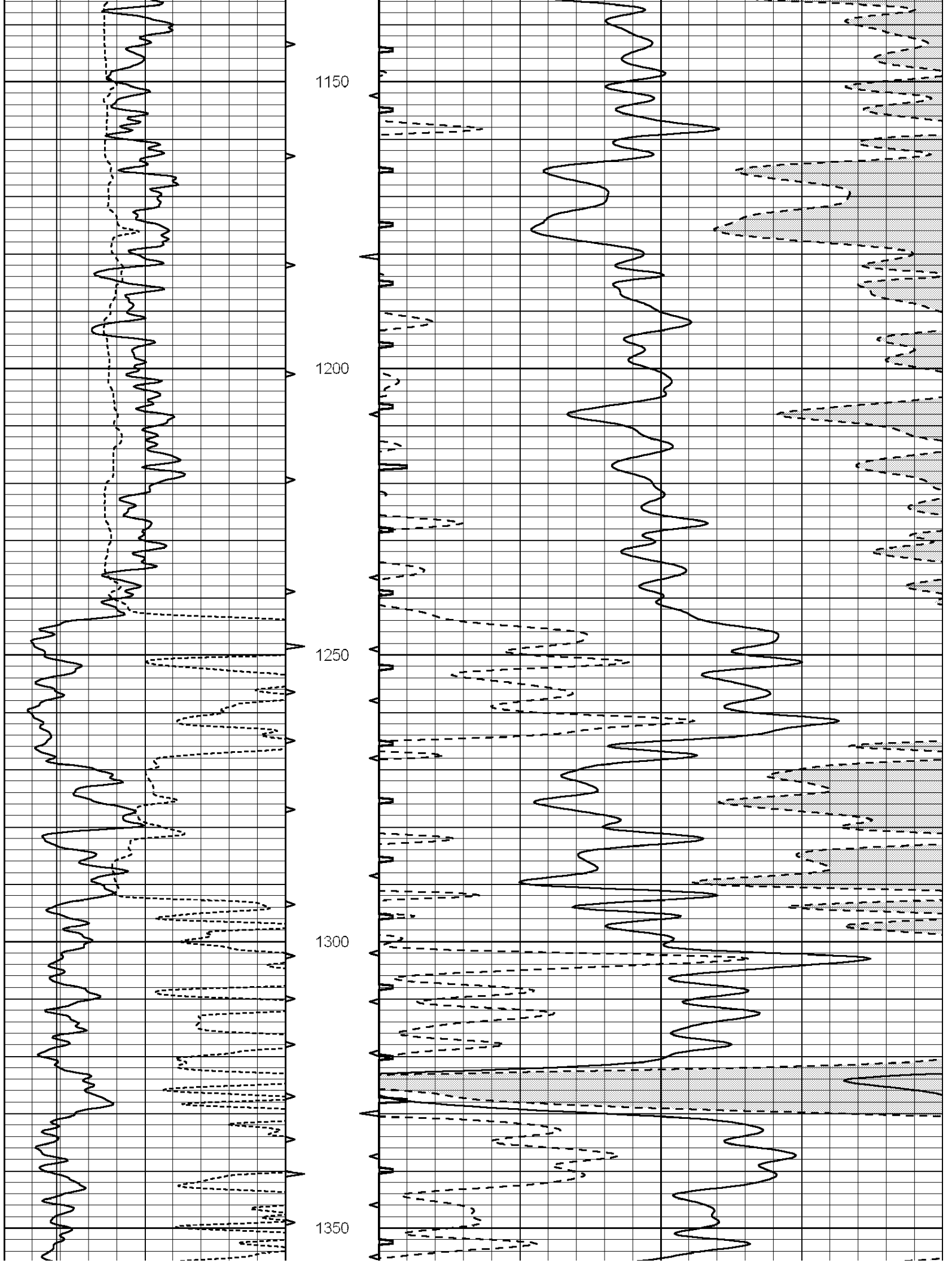
0	GAMMA RAY (GAPI)	150	ABHV	140	DELTA TIME (usec/ft)	40	
6	CALIPER (in)	16	10 (ft3)	0	30	SONIC POROSITY (pu)	-10
			TBHV	0	ITT (msec)	20	
			0 (ft3)	10			

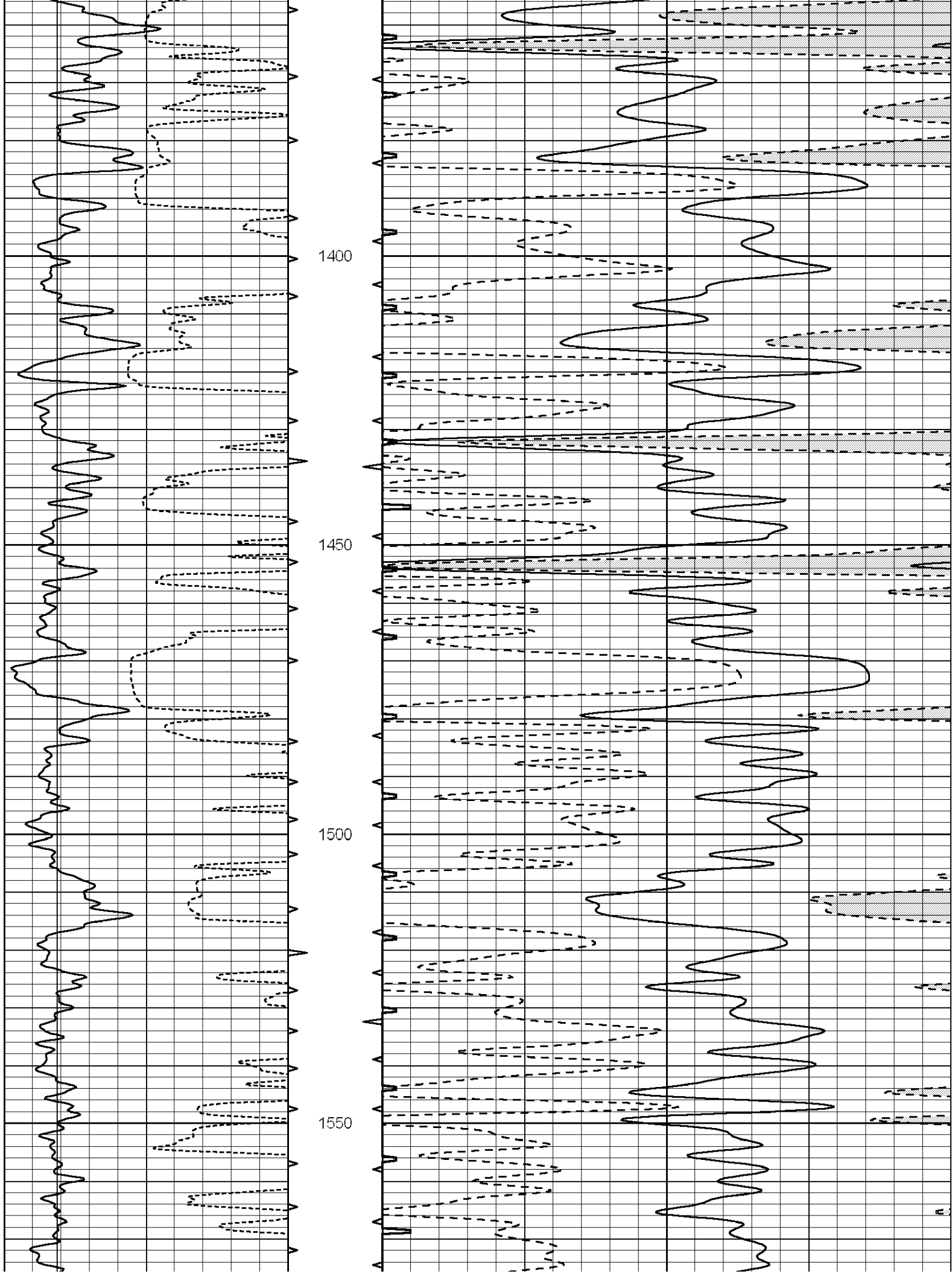


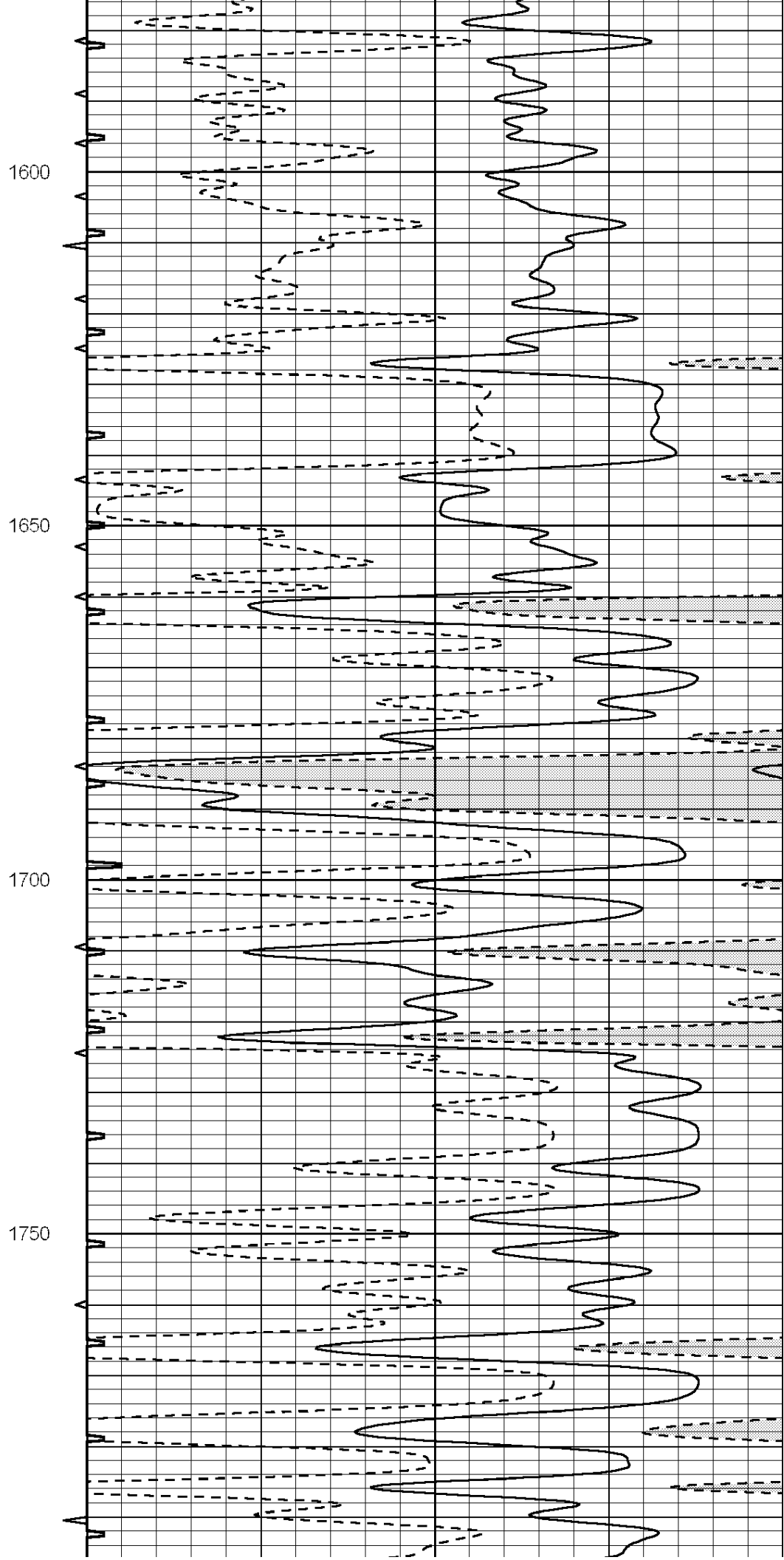
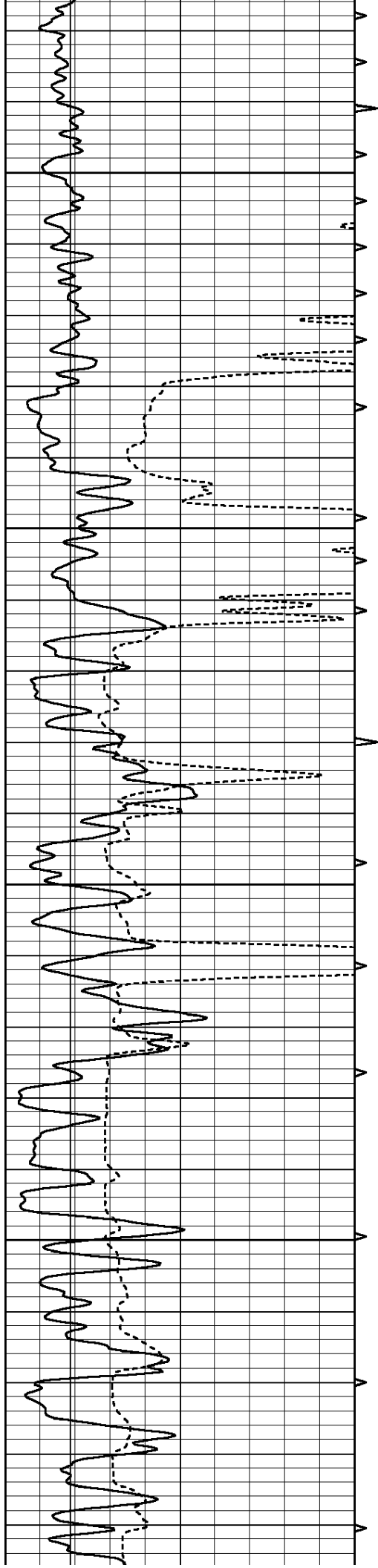


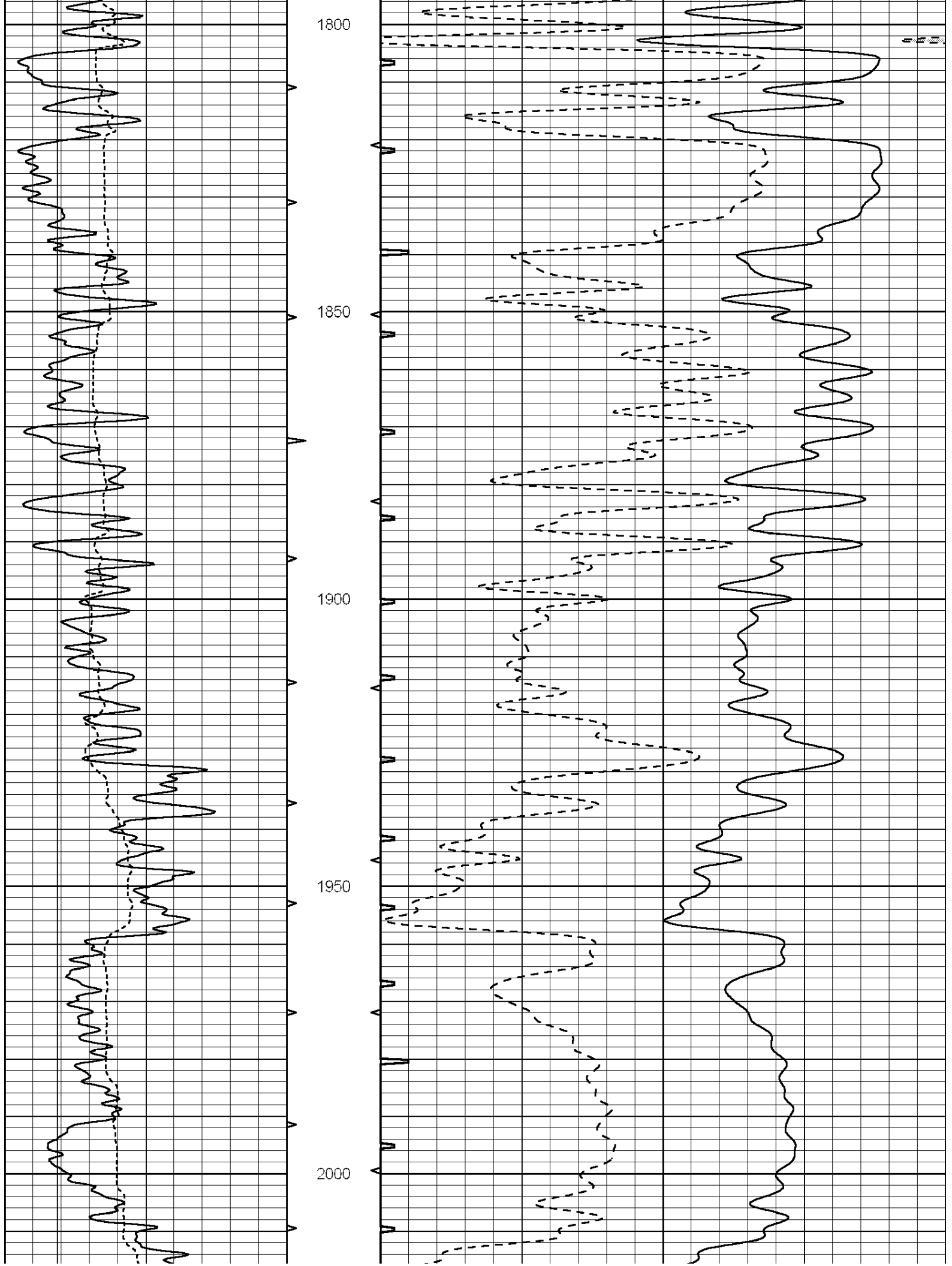


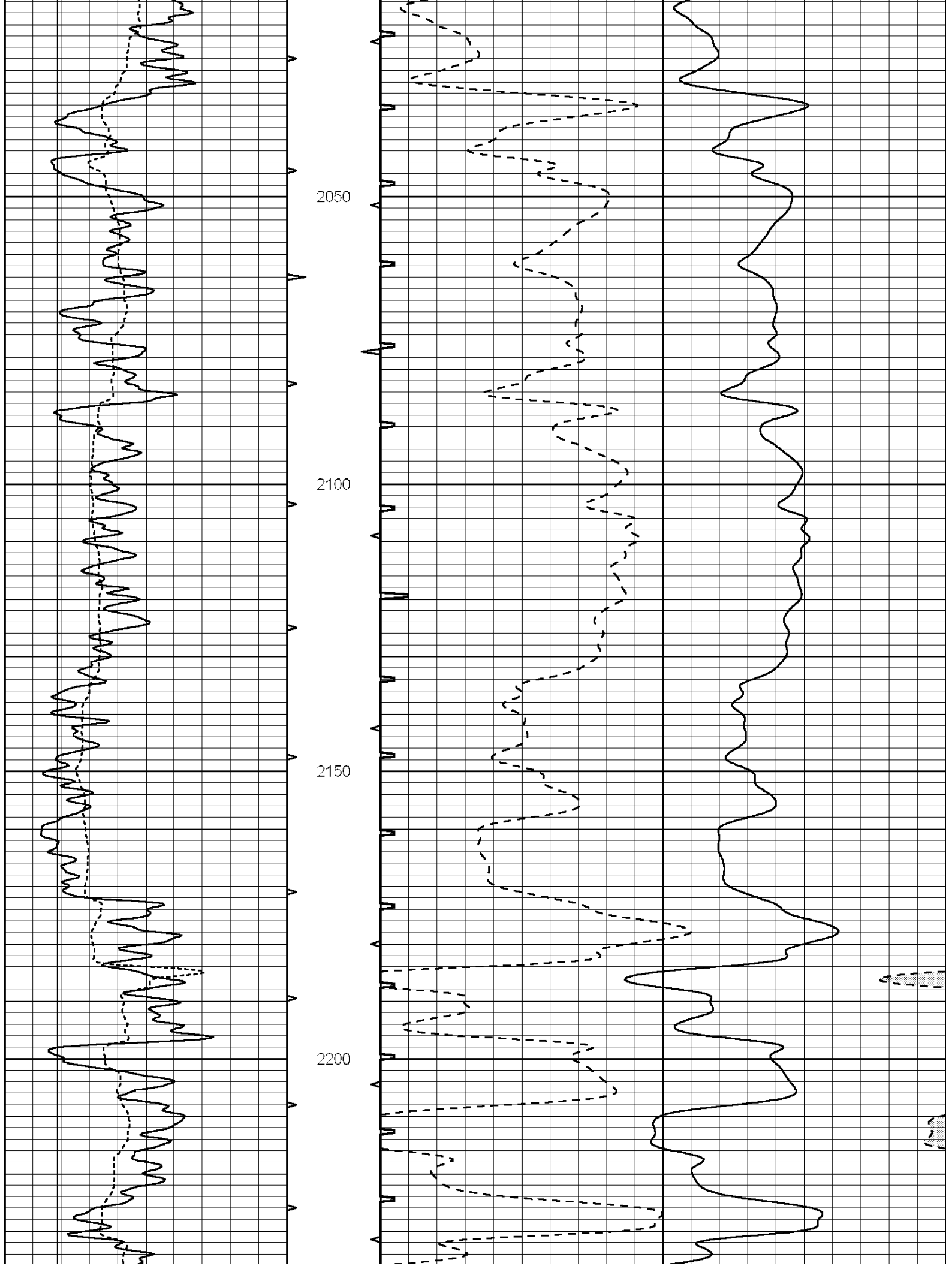


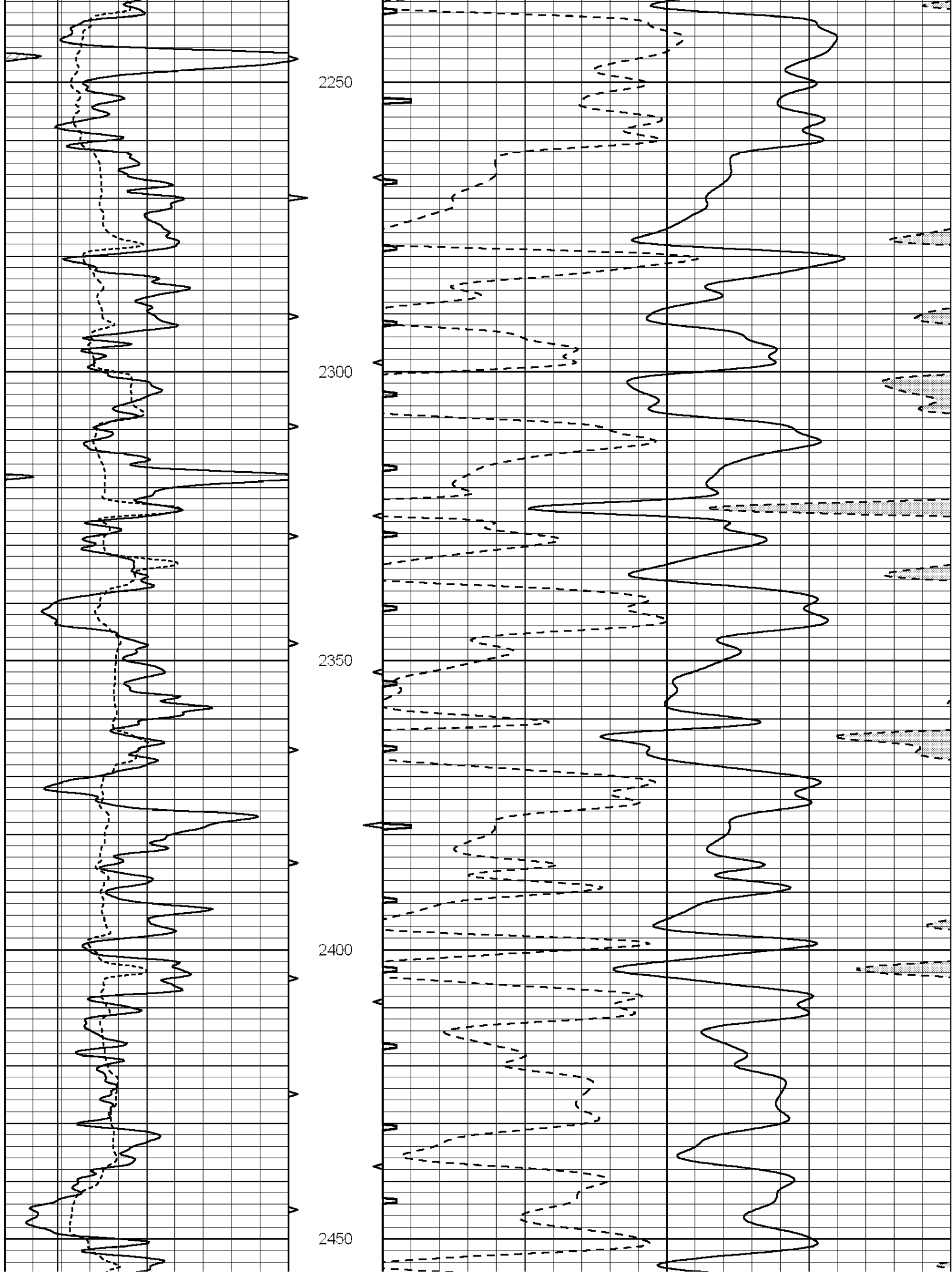


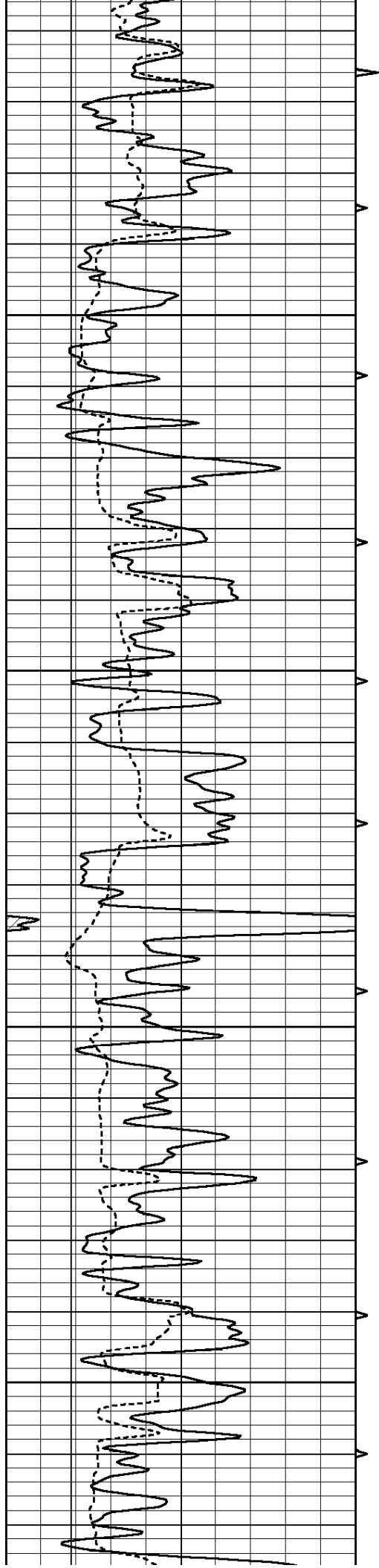










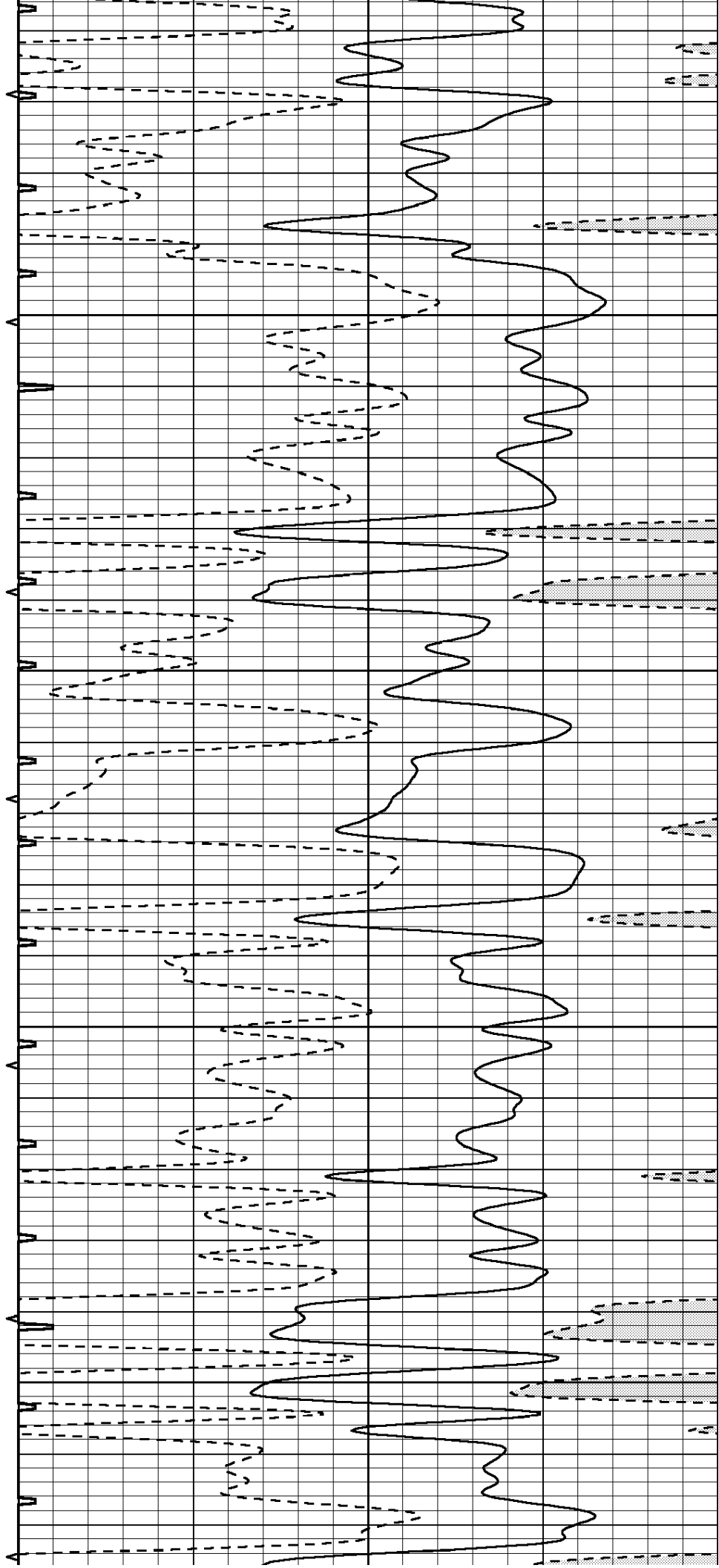


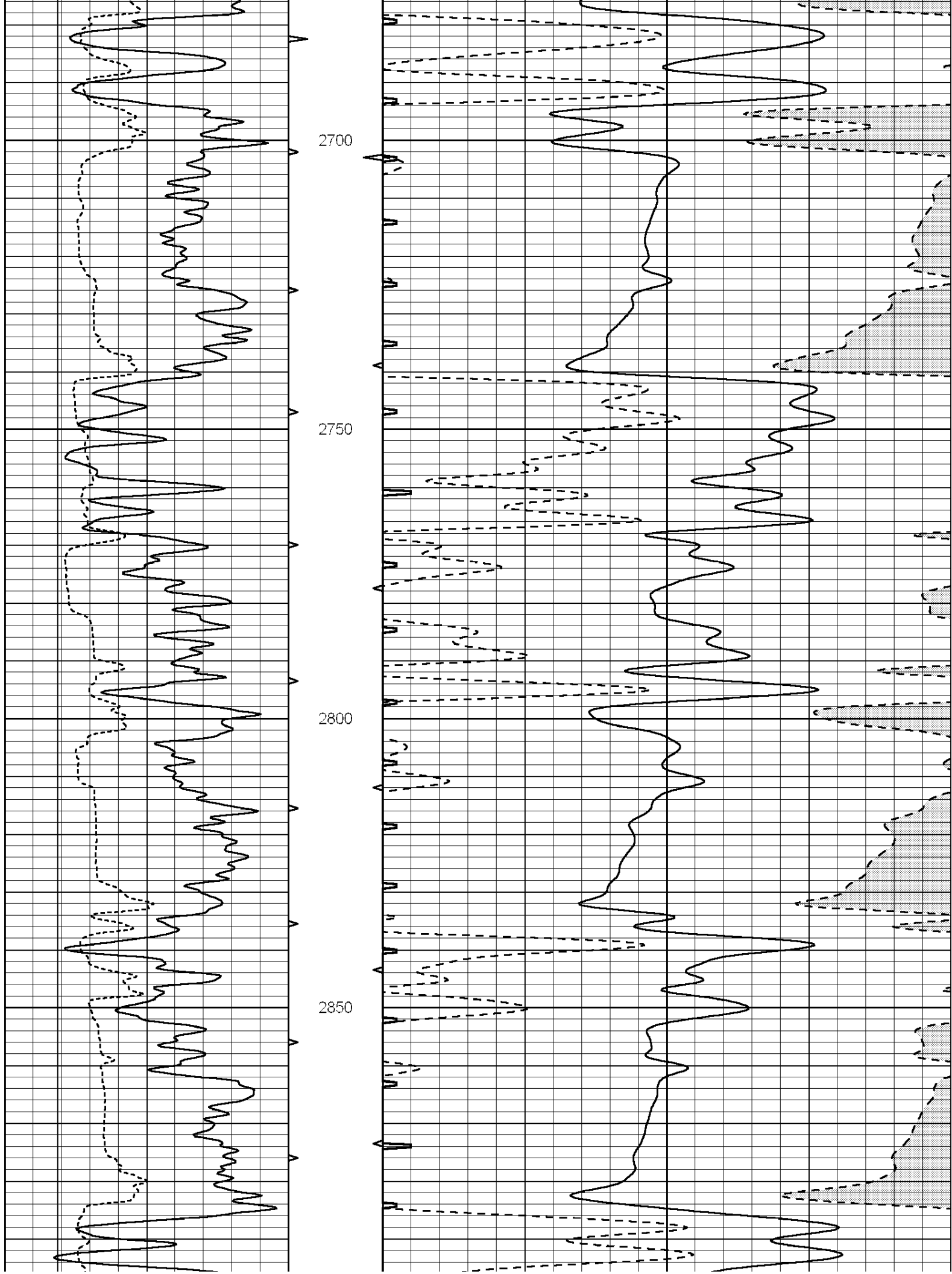
2500

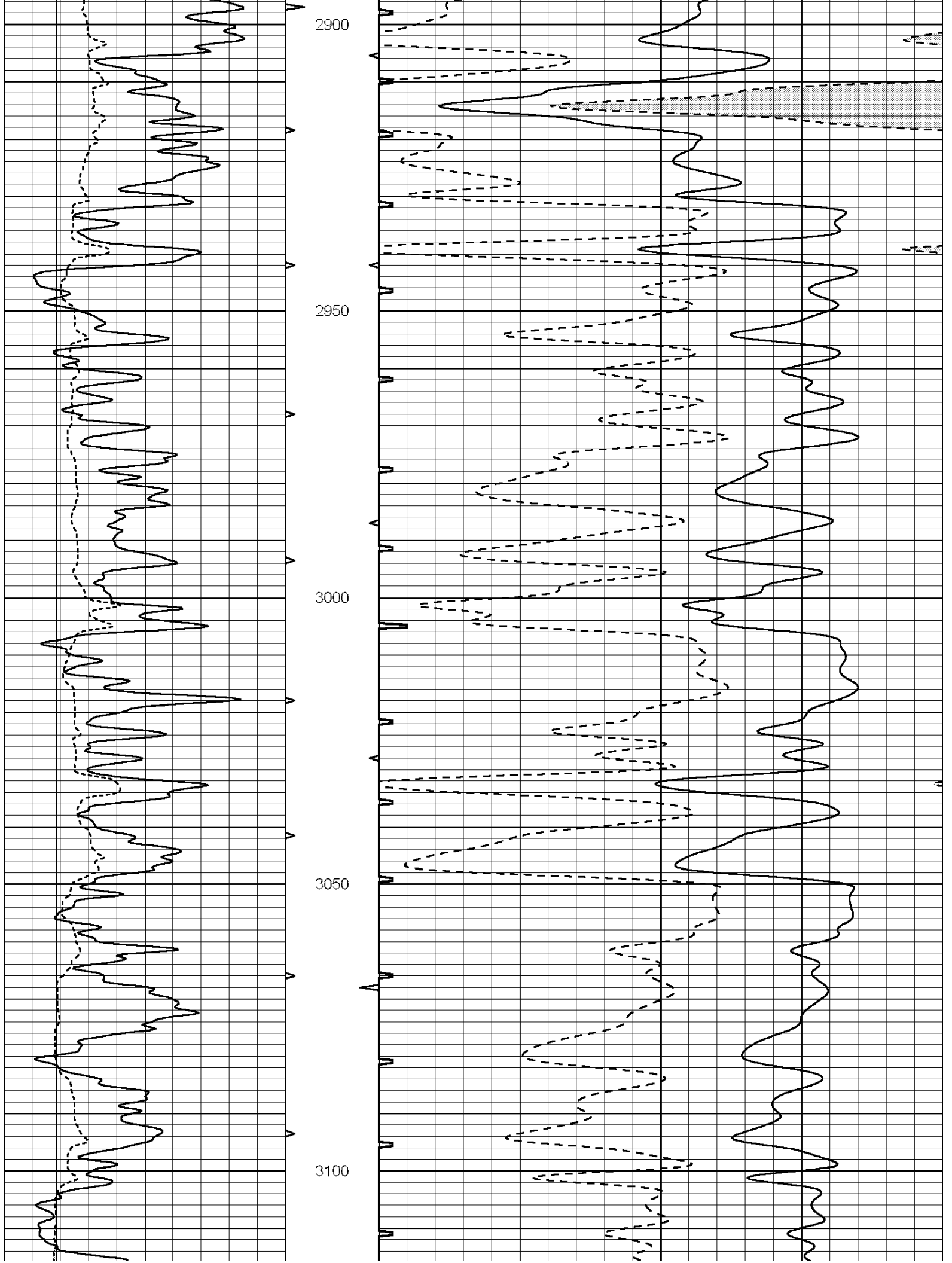
2550

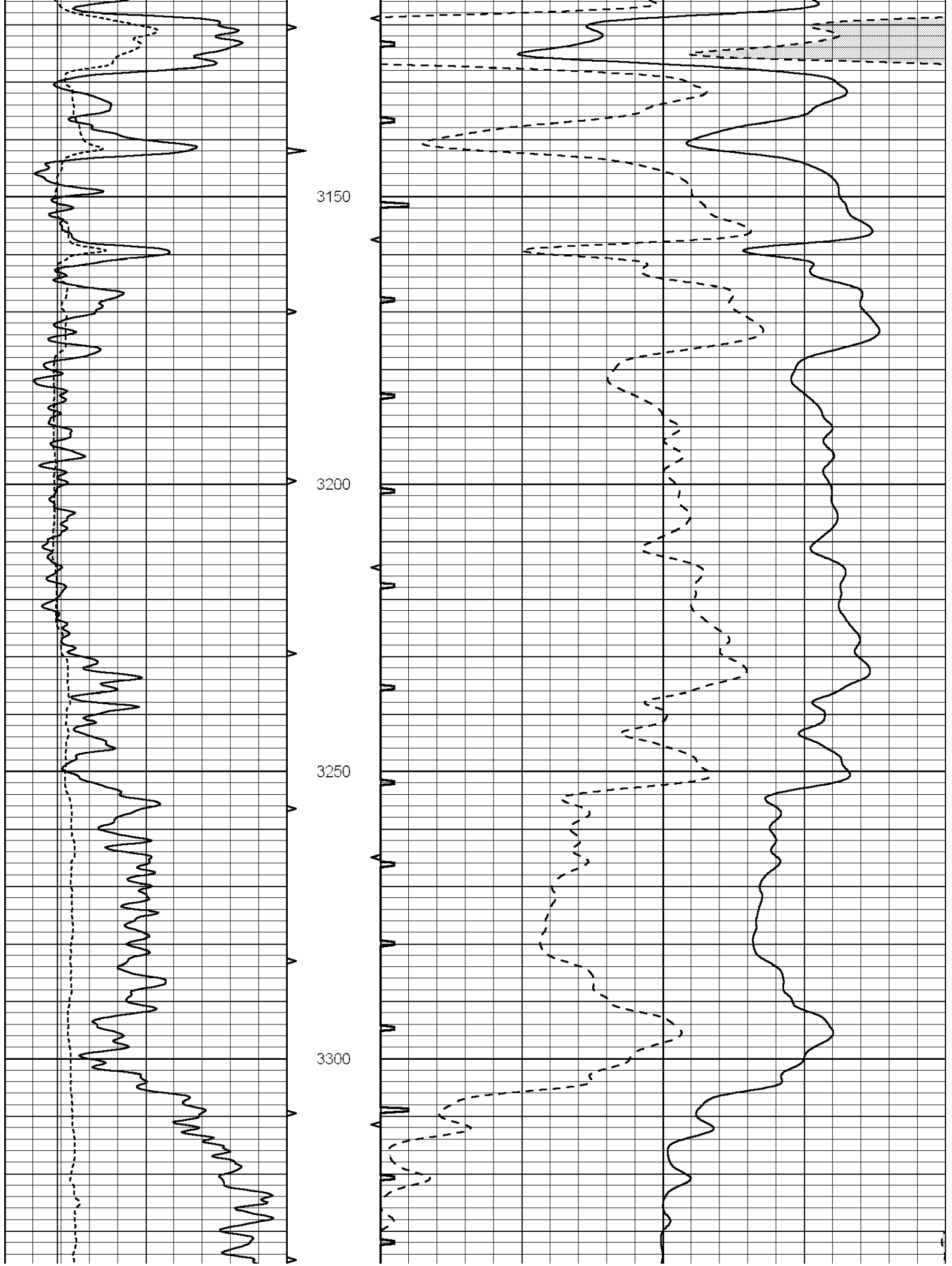
2600

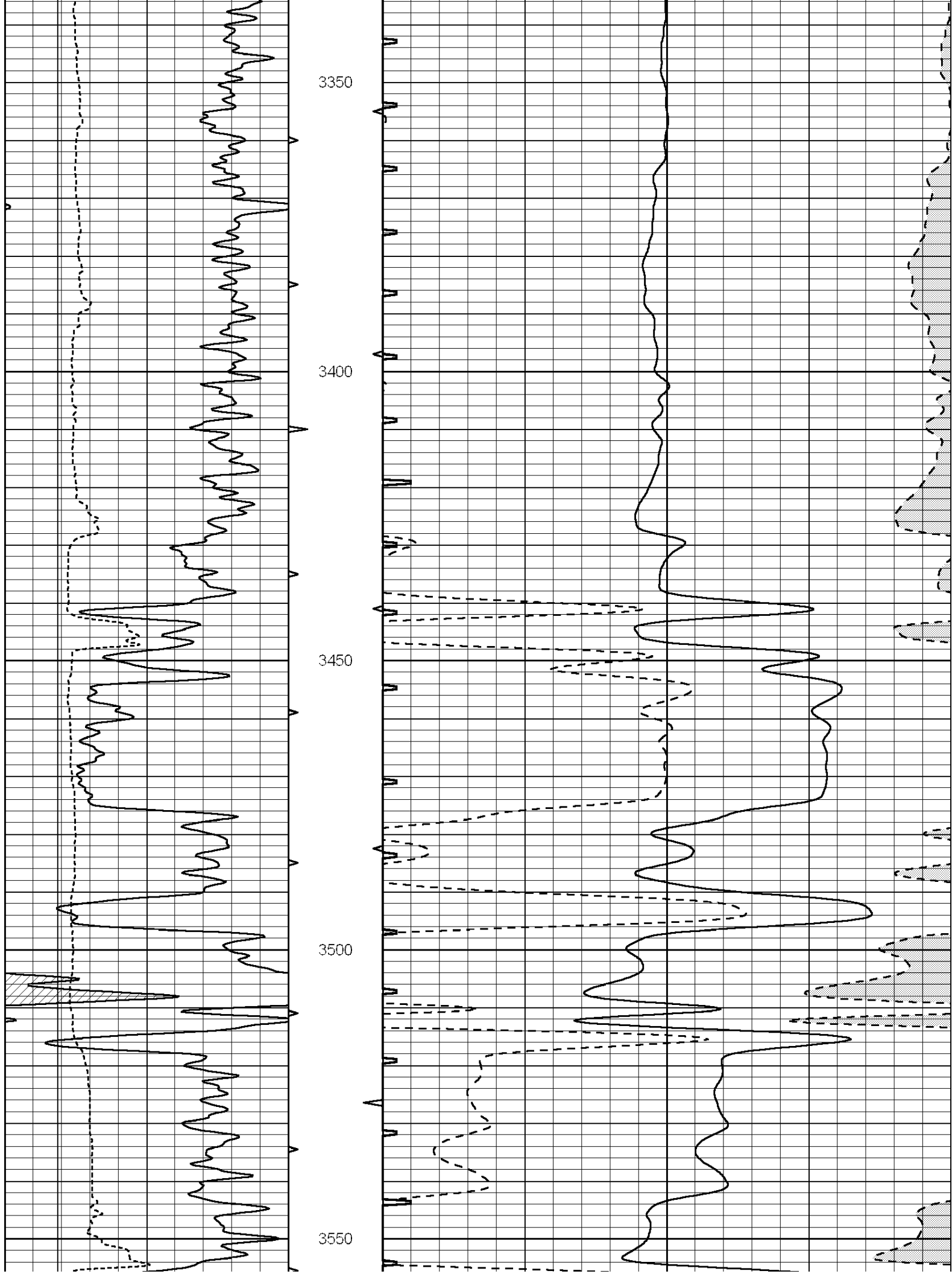
2650

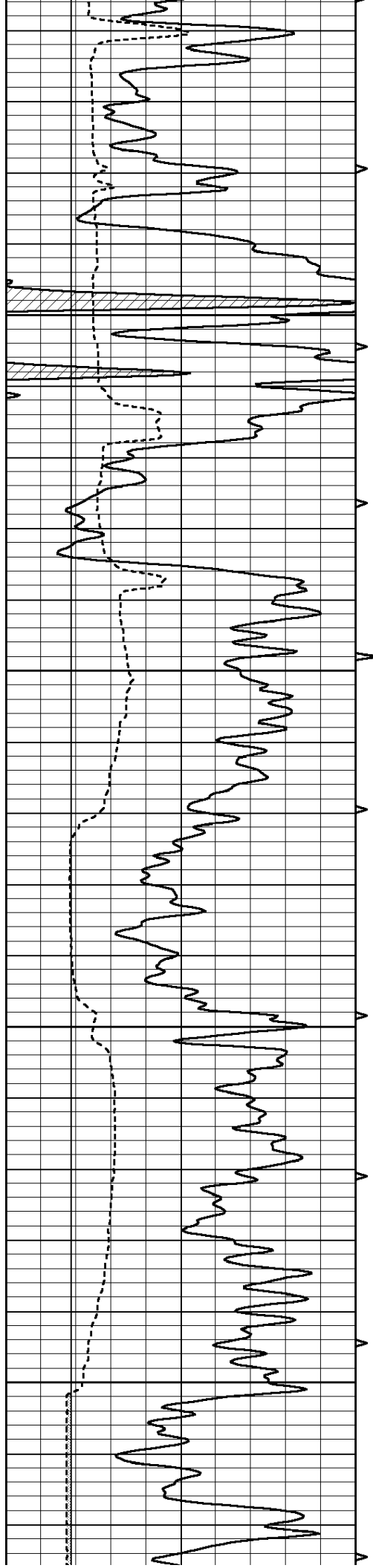










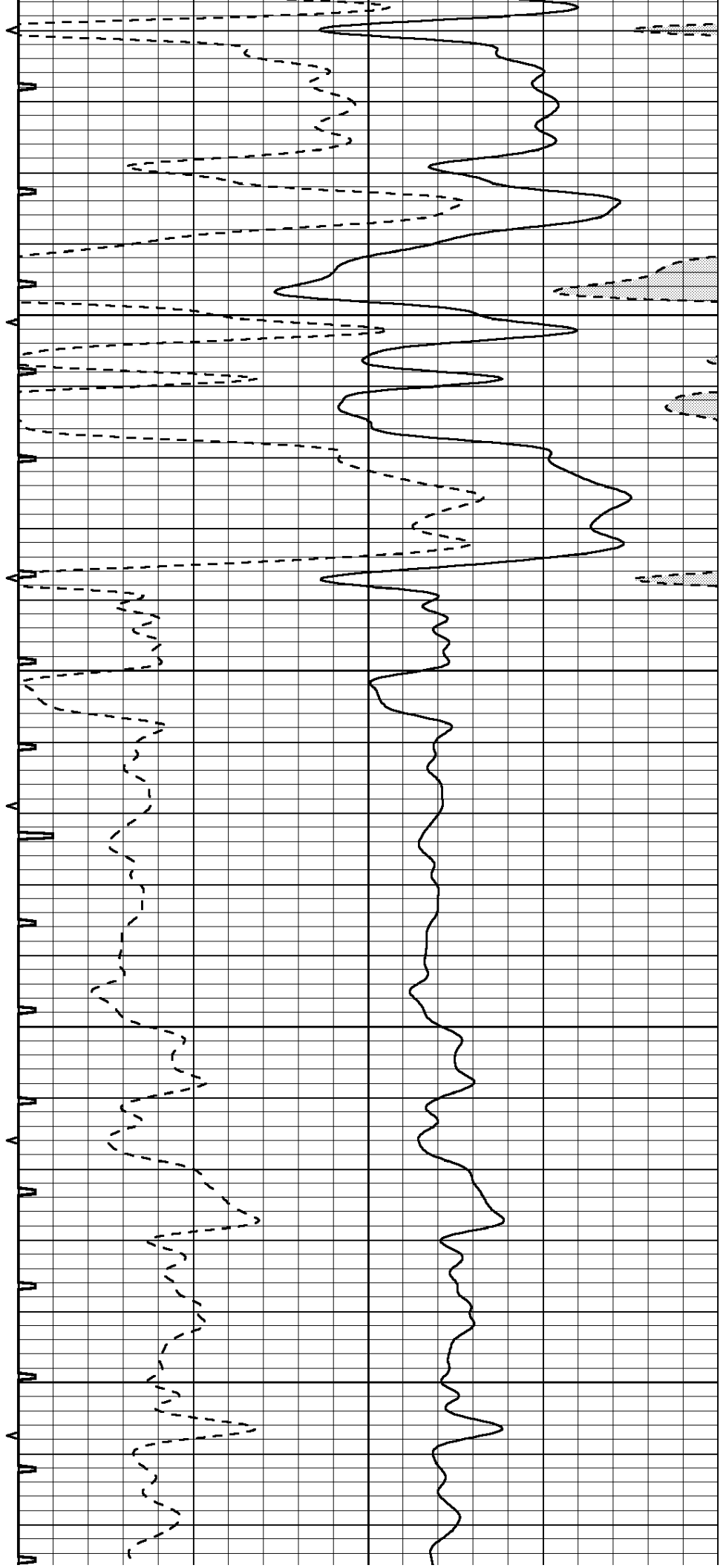


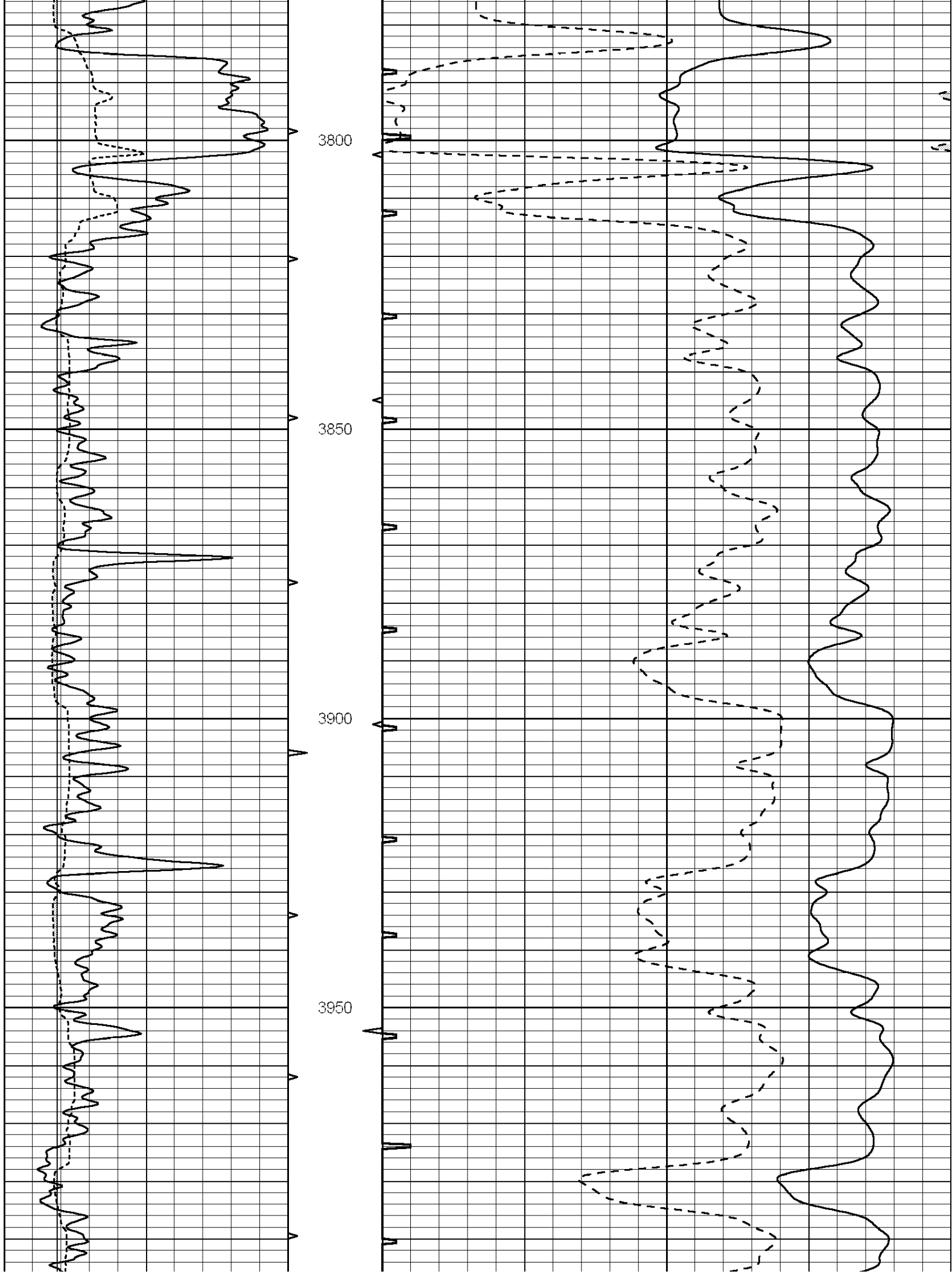
3600

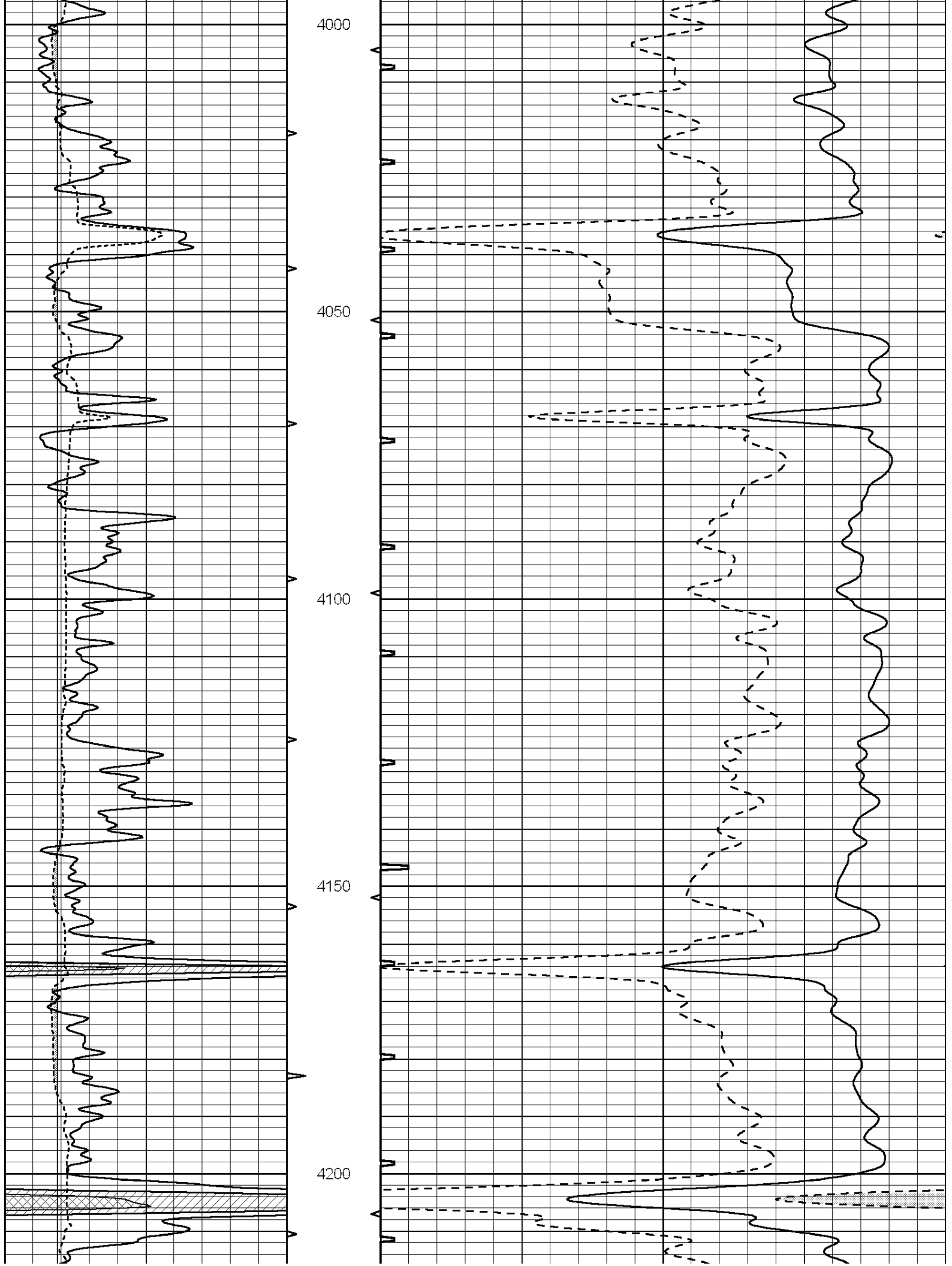
3650

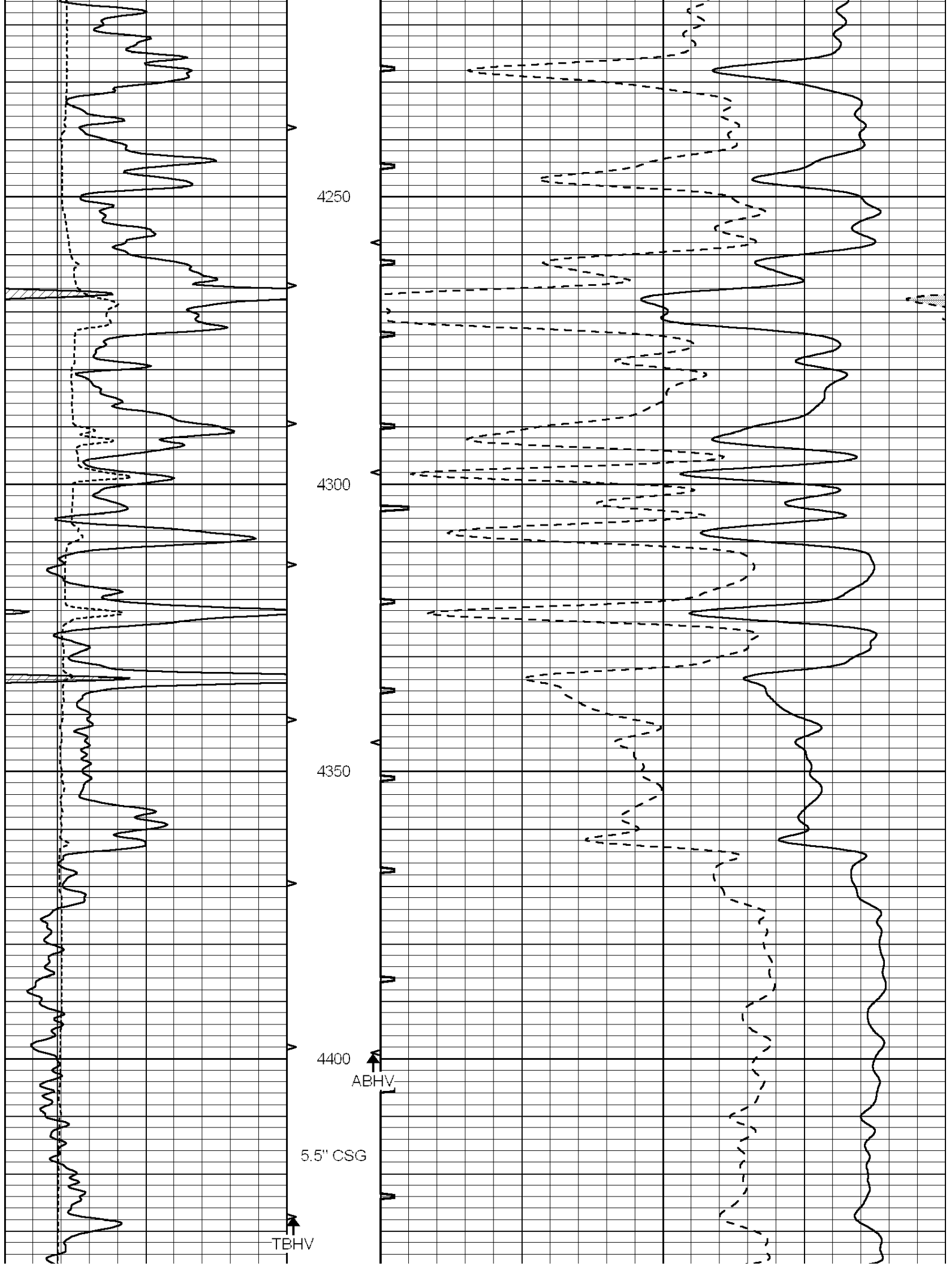
3700

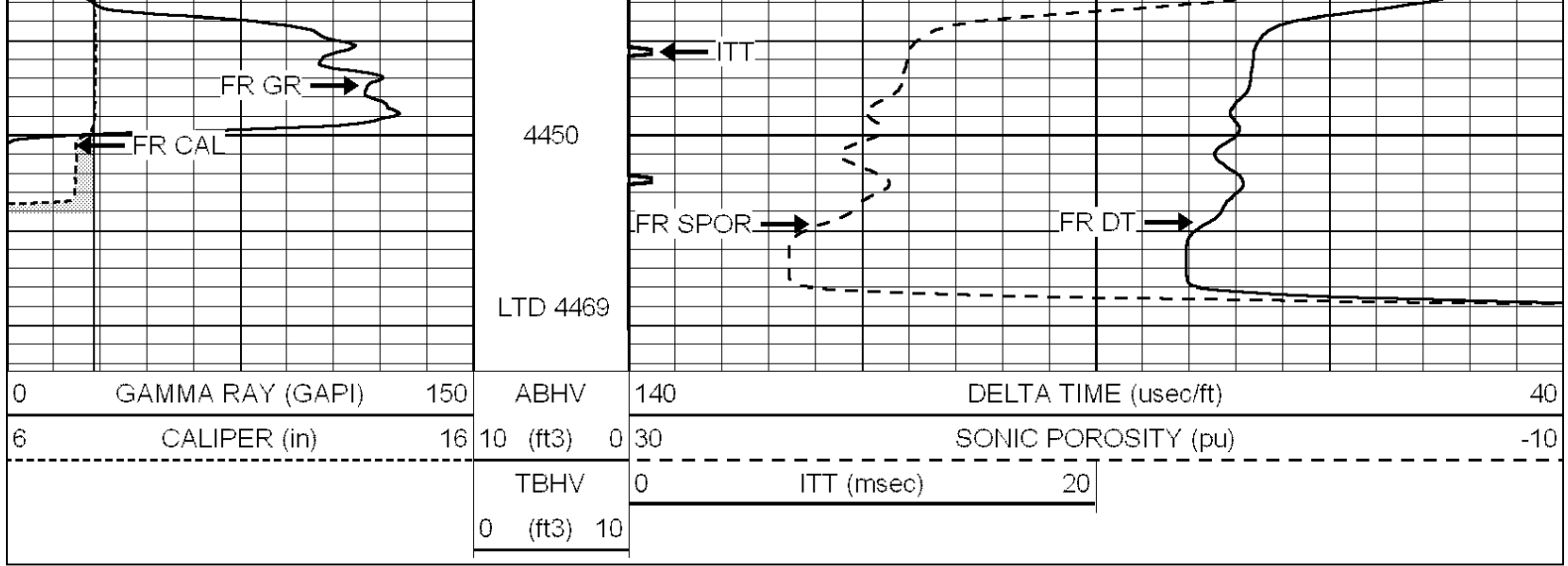
3750











SUPERIOR
Hays,
Kansas

REPEAT SECTION

Database File: 006336pe.db
 Dataset Pathname: pass5.1
 Presentation Format: _slt
 Dataset Creation: Sat Apr 09 08:21:33 2011 by Calc Open-Cased 090629
 Charted by: Depth in Feet scaled 1:240

