



SUPERIOR
Hays,
Kansas

**MICRO
LOG**

Company WHITE EXPLORATION, INC.
Well CHAIN RANCH #3
Field AMBER CREEK SOUTHEAST
County BARBER
State KANSAS

Company WHITE EXPLORATION, INC.
Well CHAIN RANCH #3
Field AMBER CREEK SOUTHEAST
County BARBER State KANSAS

Location: API # : 15-007-23672-0000
1095' FSL & 1650' FWL
SEC 6 TWP 31S RGE 11W
Permanent Datum GROUND LEVEL Elevation 1678
Log Measured From KELLY BUSHING 10' A.G.L.
Drilling Measured From KELLY BUSHING
Other Services
CDL/CNL/PE
DIL/SON
Elevation
K.B. 1688
D.F. 1686
G.L. 1678

Date	4/9/11	
Run Number	TWO	
Depth Driller	4475	
Depth Logger	4469	
Bottom Logged Interval	4451	
Top Log Interval	3400	
Casing Driller	8 5/8" @ 322	
Casing Logger	322	
Bit Size	7 7/8	
Type Fluid in Hole	CHEMICAL MUD	CHLORIDES 7000 PPM
Density / Viscosity	9.2/46	
pH / Fluid Loss	9.0/10.8	
Source of Sample	FLOWLINE	
Rim @ Meas. Temp	.60 @ 98F	
Rmf @ Meas. Temp	.45 @ 98F	
Rmc @ Meas. Temp	.72 @ 98F	
Source of Rmf / Rmc	MEASURED	
Rim @ BHT	.49 @ 120F	
Time Circulation Stopped	2 HOURS	
Time Logger on Bottom		
Maximum Recorded Temperature	120F	
Equipment Number	680	
Location	HAYS, KS.	
Recorded By	JASON CAPPELLUCCI	
Witnessed By	RYAN DIXON	

<<< Fold Here >>>

All interpretations are opinions based on inferences from electrical or other measurements and we cannot and do not guarantee the accuracy or correctness of any interpretation, and we shall not, except in the case of gross or willful negligence on our part, be liable or responsible for any loss, costs, damages, or expenses incurred or sustained by anyone resulting from any interpretation made by any of our officers, agents or employees. These interpretations are also subject to our general terms and conditions set out in our current Price Schedule.

Comments

THANK YOU FOR USING SUPERIOR WELL SERVICE (785) 628-6395
DIRECTIONS
MEDICINE LODGE, KS - E. TO ISABEL RD. - 8 N. TO CHAIN RANCH
W. INTO, STAY LEFT AT 3 FORKS, 4TH FORK STAY RIGHT INTO

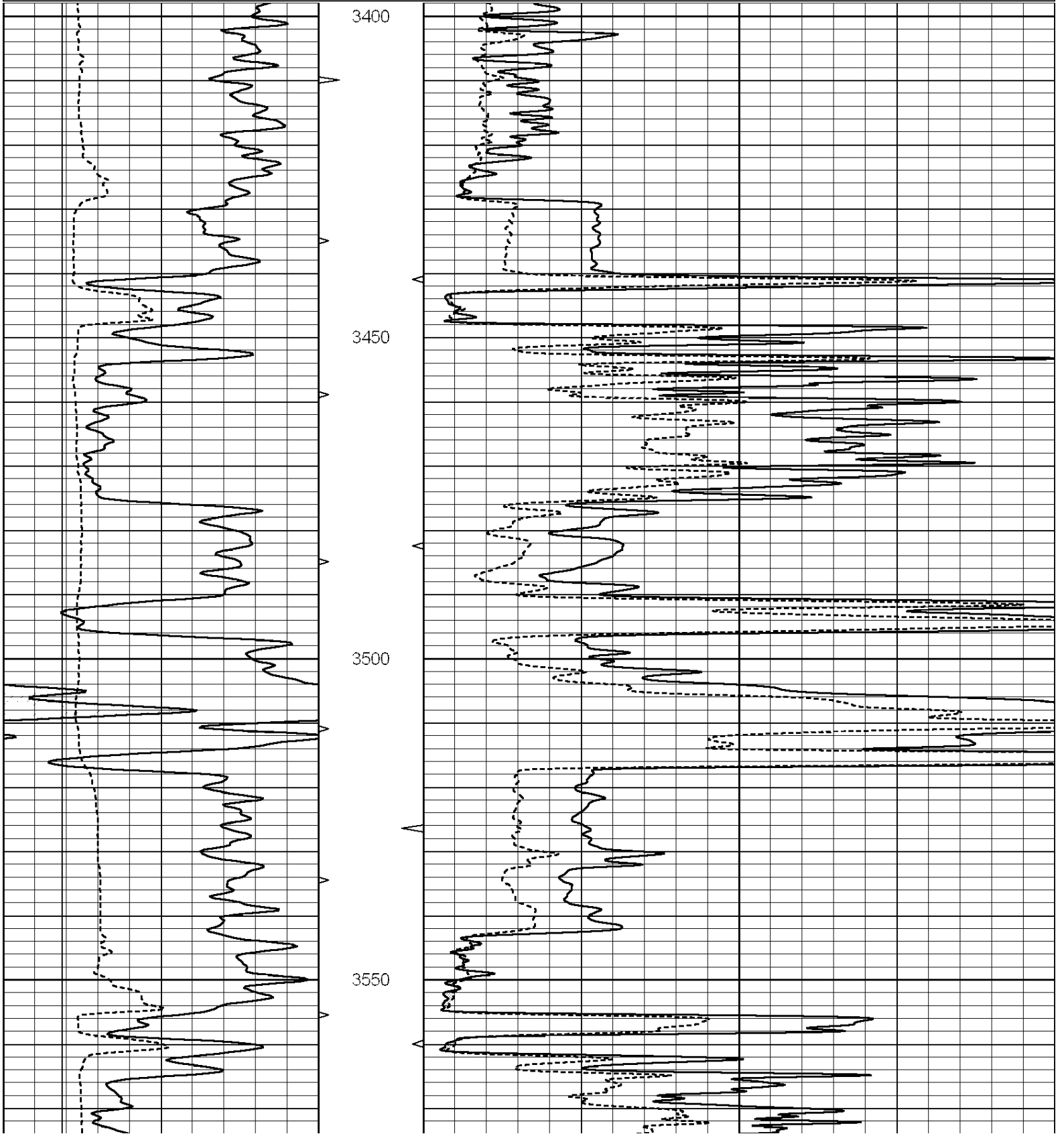


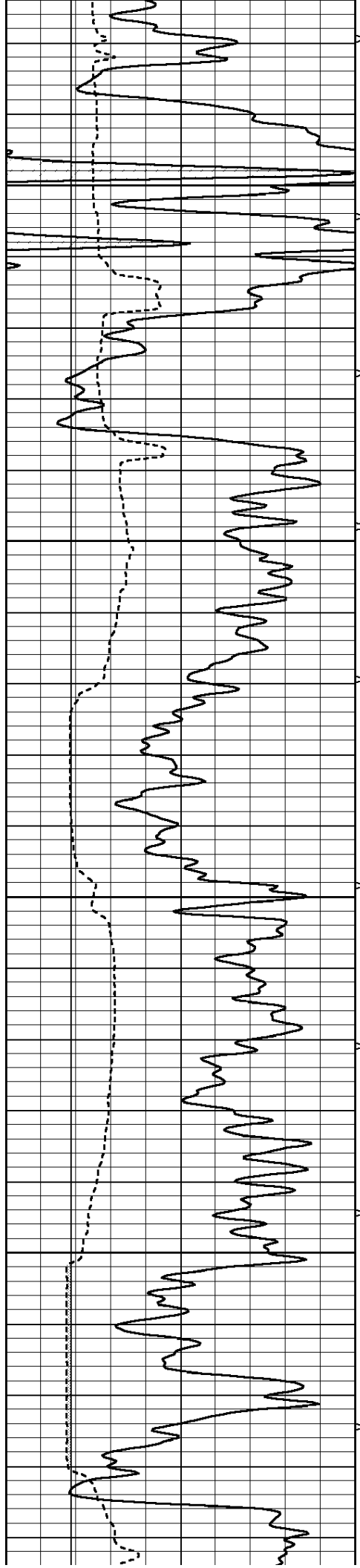
SUPERIOR
Hays,
Kansas

MAIN SECTION

Database File: 006336pe.db
 Dataset Pathname: pass6.1
 Presentation Format: _micro
 Dataset Creation: Sat Apr 09 08:35:42 2011 by Calc Open-Cased 090629
 Charted by: Depth in Feet scaled 1:240

0	GAMMA RAY (GAPI)	150	ABHV	0	MEL1.5 (Ohm-m)	40
6	CALIPER (in)	16	10 (ft3)	0	MEL2.0 (Ohm-m)	40
			TBHV			
			0 (ft3)	10		



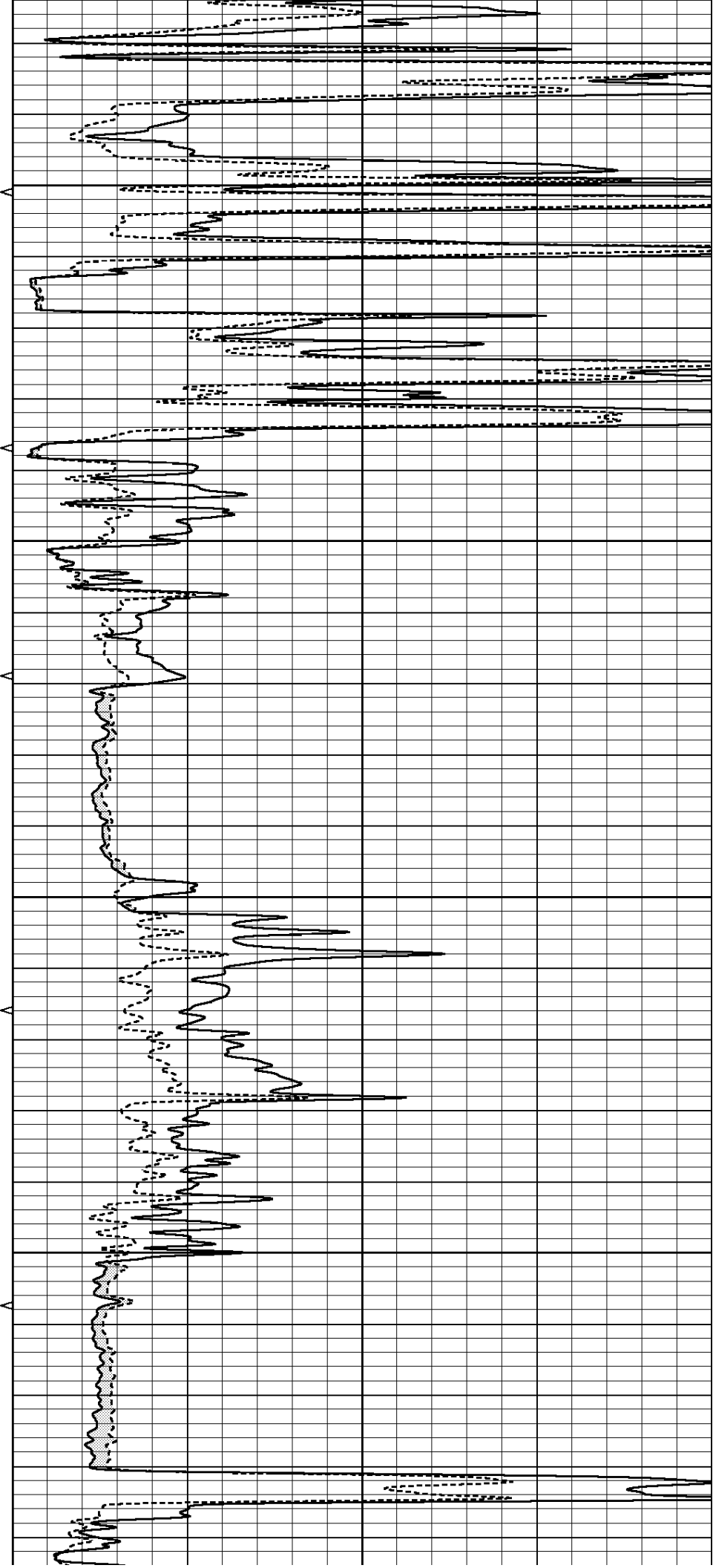


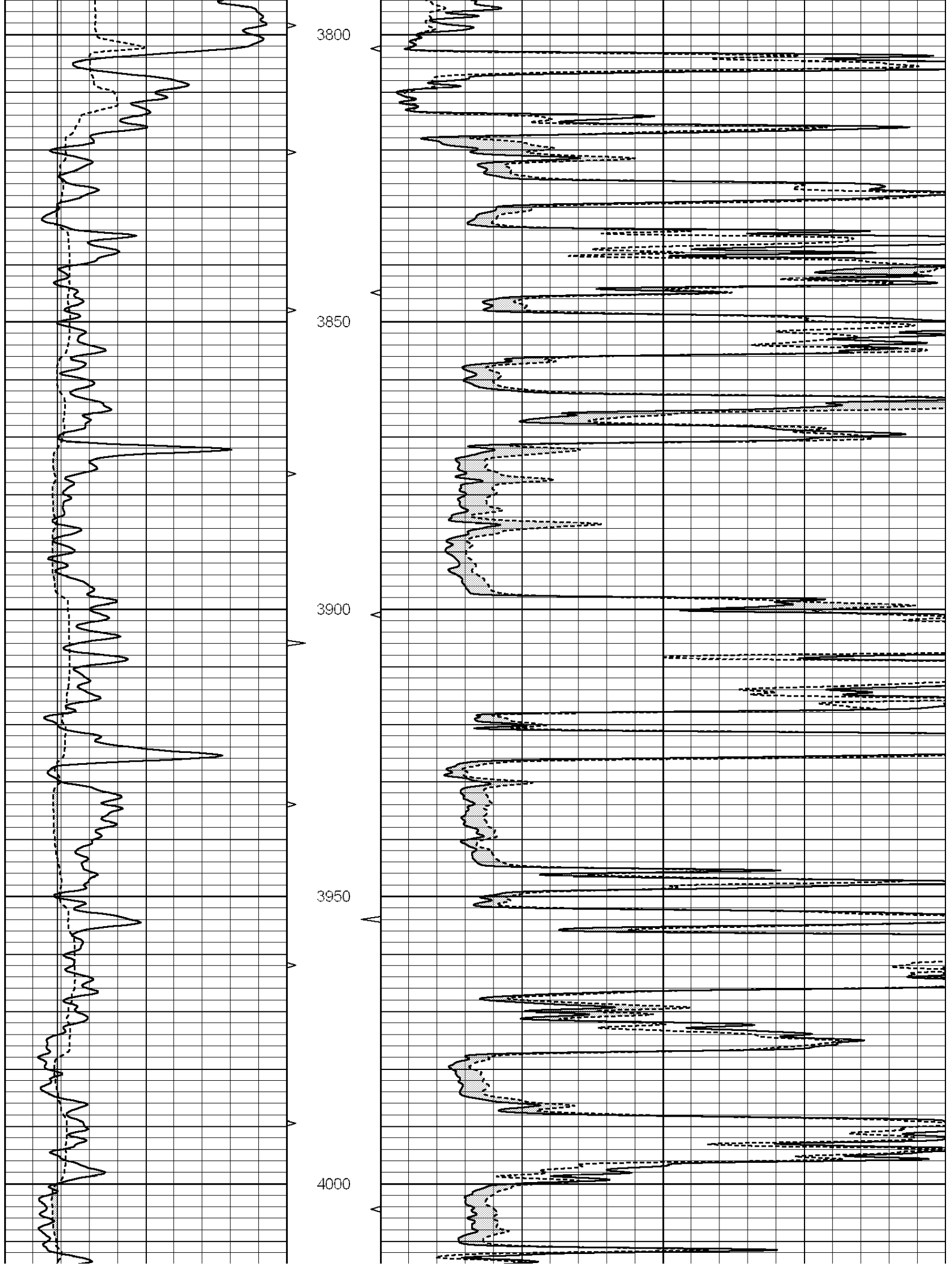
3600

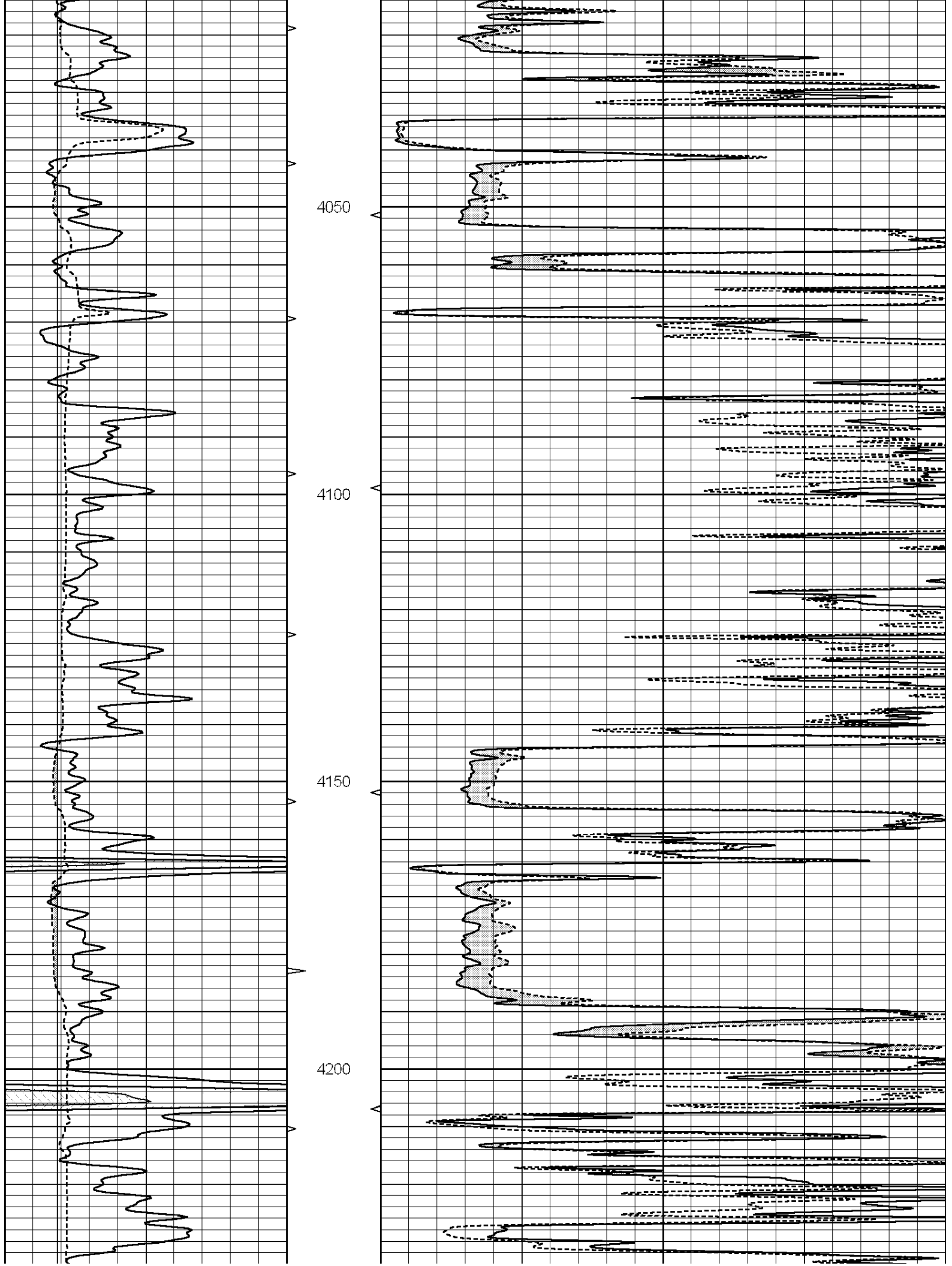
3650

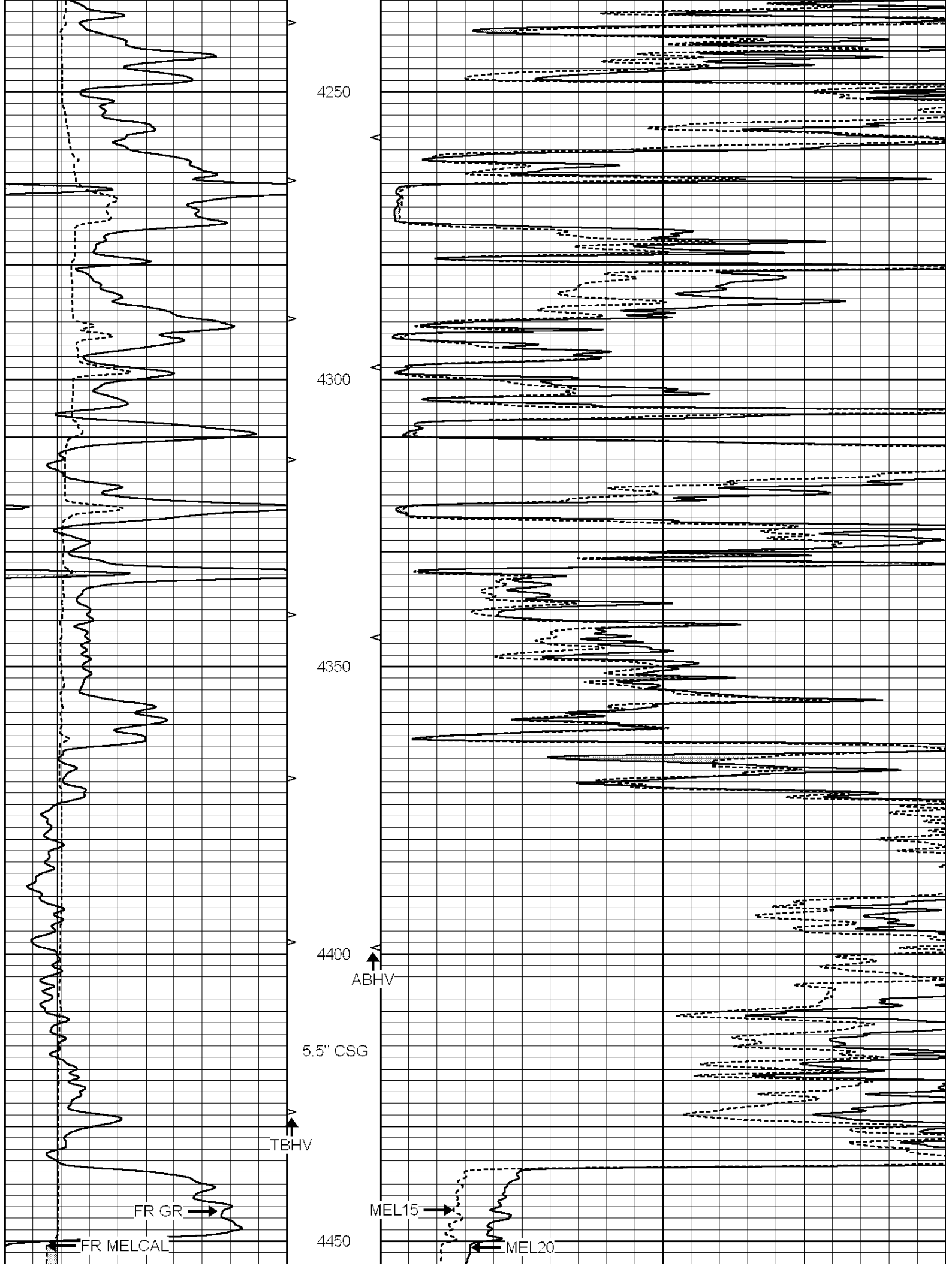
3700

3750









LTD 4469

0	GAMMA RAY (GAPI)	150	ABHV	0	MEL1.5 (Ohm-m)	40
6	CALIPER (in)	16	10 (ft3) 0	0	MEL2.0 (Ohm-m)	40
			TBHV			
			0 (ft3) 10			

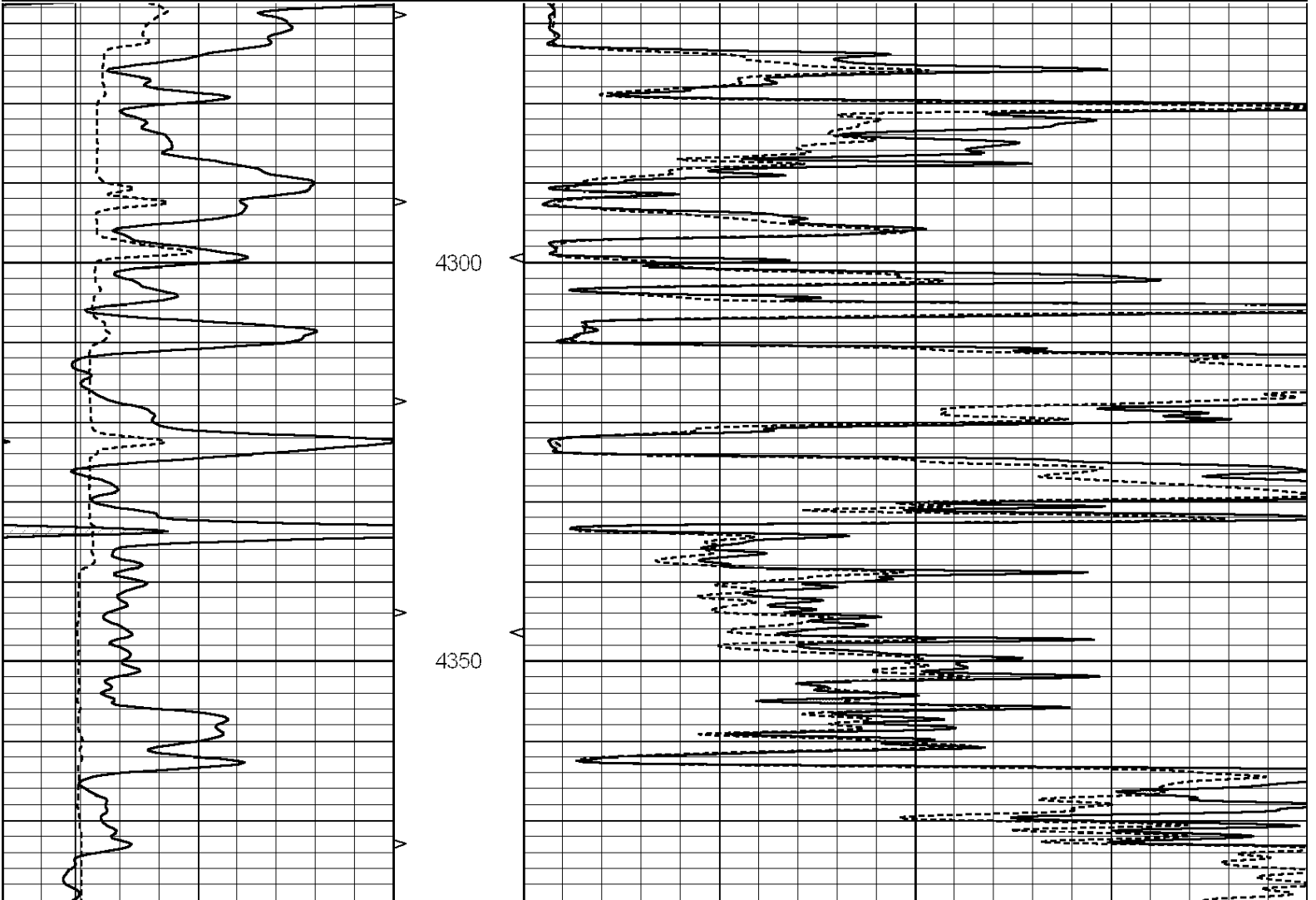


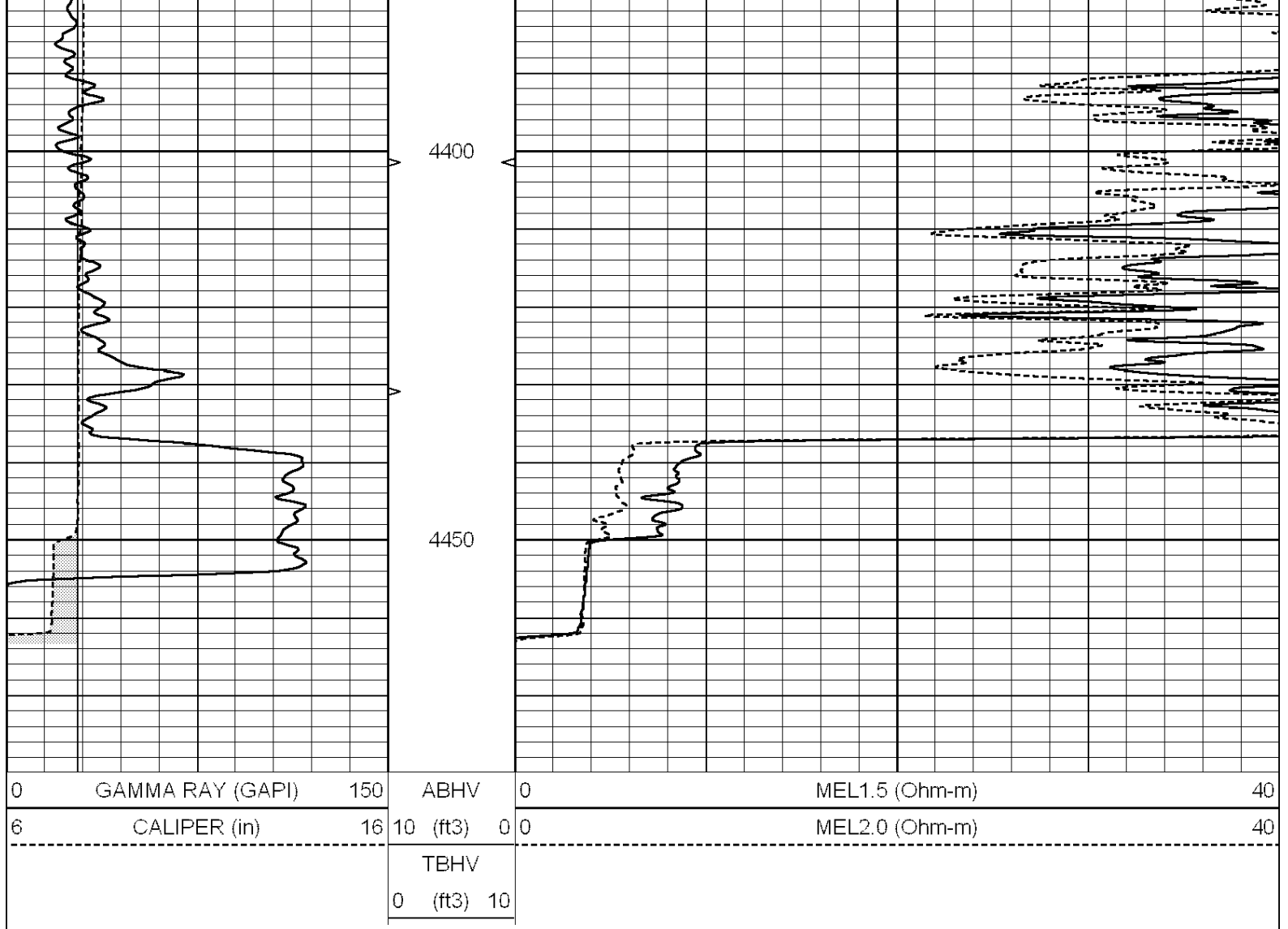
SUPERIOR
Hays,
Kansas

REPEAT SECTION

Database File: 006336pe.db
Dataset Pathname: pass5.1
Presentation Format: _micro
Dataset Creation: Sat Apr 09 08:21:33 2011 by Calc Open-Cased 090629
Charted by: Depth in Feet scaled 1:240

0	GAMMA RAY (GAPI)	150	ABHV	0	MEL1.5 (Ohm-m)	40
6	CALIPER (in)	16	10 (ft3) 0	0	MEL2.0 (Ohm-m)	40
			TBHV			
			0 (ft3) 10			





Calibration Report

Database File: 006336pe.db
 Dataset Pathname: pass5.1
 Dataset Creation: Sat Apr 09 08:21:33 2011 by Calc Open-Cased 090629

MICRO Calibration Report

Serial Number:	MICRO6	
Tool Model:	PROBE	
Performed:	Mon Apr 04 05:13:13 2011	
Caliper Calibration:	Gain=5.211	Offset=0.060
References	Low Cal	High Cal
Readings	8.000	14.000
	1.178	2.330
1.5" Calibration:	Gain=35.075	Offset=-0.650
References	Low Cal	High Cal
Readings	0.000	20.000
	0.004	1.196
2" Calibration:	Gain=32.041	Offset=0.000
References	Low Cal	High Cal
Readings	0.000	20.000
	0.006	0.913

Gamma Ray Calibration Report

Serial Number:	#8	
Tool Model:	OPEN	
Performed:	Fri Feb 18 03:07:29 2011	
Calibrator Value:	150.0	GAPI
Background Reading:	0.0	cps
Calibrator Reading:	175.0	cps
Sensitivity:	0.8971	GAPI/cps