



SUPERIOR
Hays,
Kansas

MICRO
LOG

Company MULL DRILLING COMPANY, INC.
Well #1-32 BABCOCK "B"
Field WILDCAT
County GOVE
State KANSAS

Company MULL DRILLING COMPANY, INC.
Well #1-32 BABCOCK "B"
Field WILDCAT
County GOVE State KANSAS

Location: API # : 15-063-21891-0000
2502' FNL & 1209' FEL
SEC 32 TWP 15S RGE 26W
Permanent Datum GROUND LEVEL Elevation 2542
Log Measured From KELLY BUSHING 9' A.G.L.
Drilling Measured From KELLY BUSHING
Other Services
CDL/CNL/PE
DIL/SONIC
Elevation
K.B. 2551
D.F. 2549
G.L. 2542

Date	3/11/11
Run Number	TWO
Depth Driller	4540
Depth Logger	4542
Bottom Logged Interval	4519
Top Log Interval	3700
Casing Driller	8 5/8"@238'
Casing Logger	238
Bit Size	7 7/8"
Type Fluid in Hole	CHEMICAL MUD
Density / Viscosity	9.2/55
pH / Fluid Loss	10.0/8.8
Source of Sample	FLOWLINE
Rim @ Meas. Temp	1.30@80F
Rmf @ Meas. Temp	.975@80F
Rmc @ Meas. Temp	1.56@80F
Source of Rmf / Rmc	MEASUREMENT
Rim @ BHT	.860@121F
Time Circulation Stopped	4.5 HOURS
Time Logger on Bottom	9:30 P.M.
Maximum Recorded Temperature	121F
Equipment Number	0836
Location	HAYS, KANSAS
Recorded By	JEFF LUEBBERS
Witnessed By	KEVIN KESSLER

<<< Fold Here >>>

All interpretations are opinions based on inferences from electrical or other measurements and we cannot and do not guarantee the accuracy or correctness of any interpretation, and we shall not, except in the case of gross or willful negligence on our part, be liable or responsible for any loss, costs, damages, or expenses incurred or sustained by anyone resulting from any interpretation made by any of our officers, agents or employees. These interpretations are also subject to our general terms and conditions set out in our current Price Schedule.

Comments

THANK YOU FOR USING SUPERIOR WELL SERVICE HAYS, KANSAS (785) 628-6395
DIRECTIONS
UTICA, KS. 3W. ON HWY 4 TO "CASTLE ROCK RD.", 4N., E. INTO@CURVE IN THE RD.

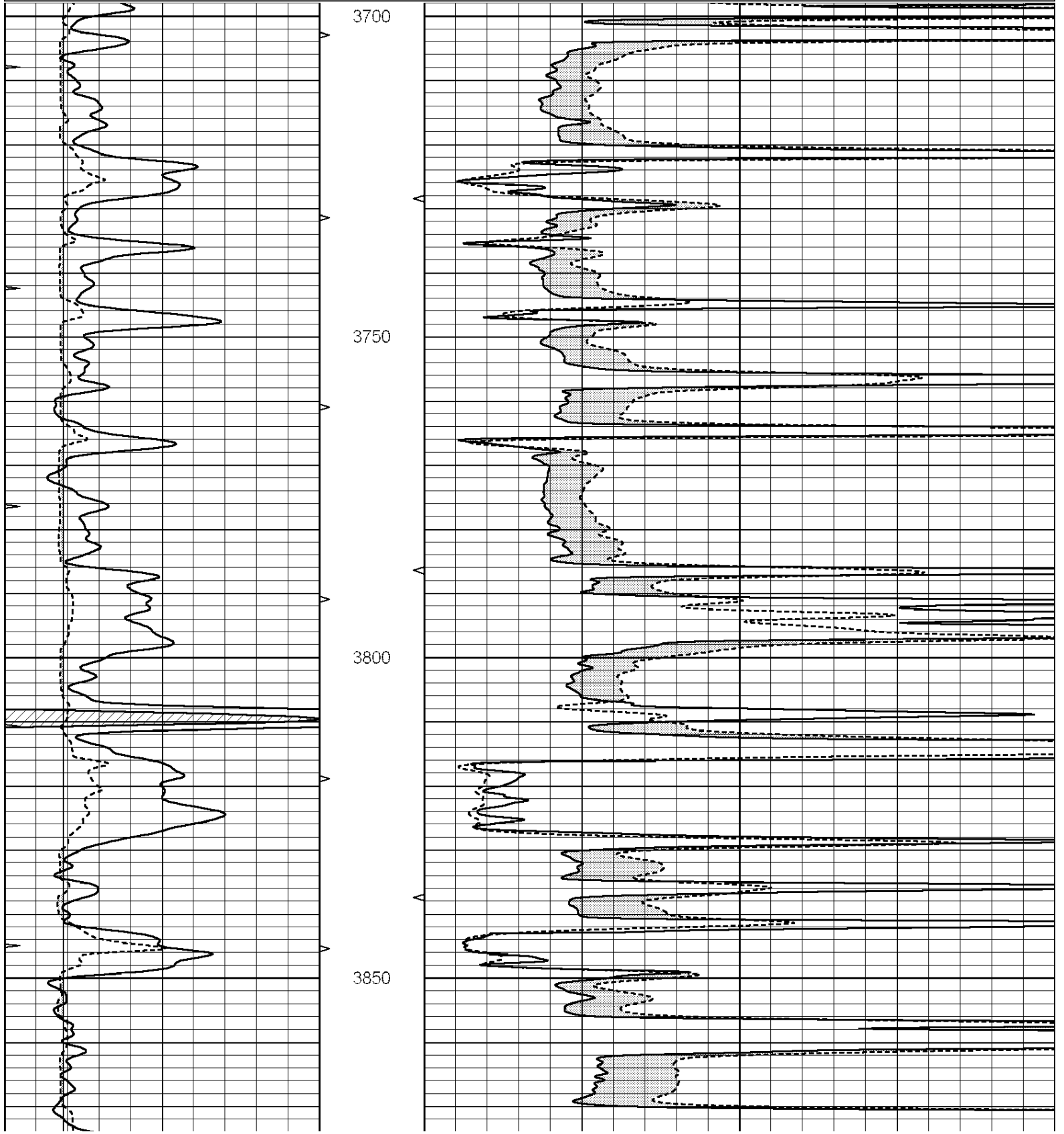


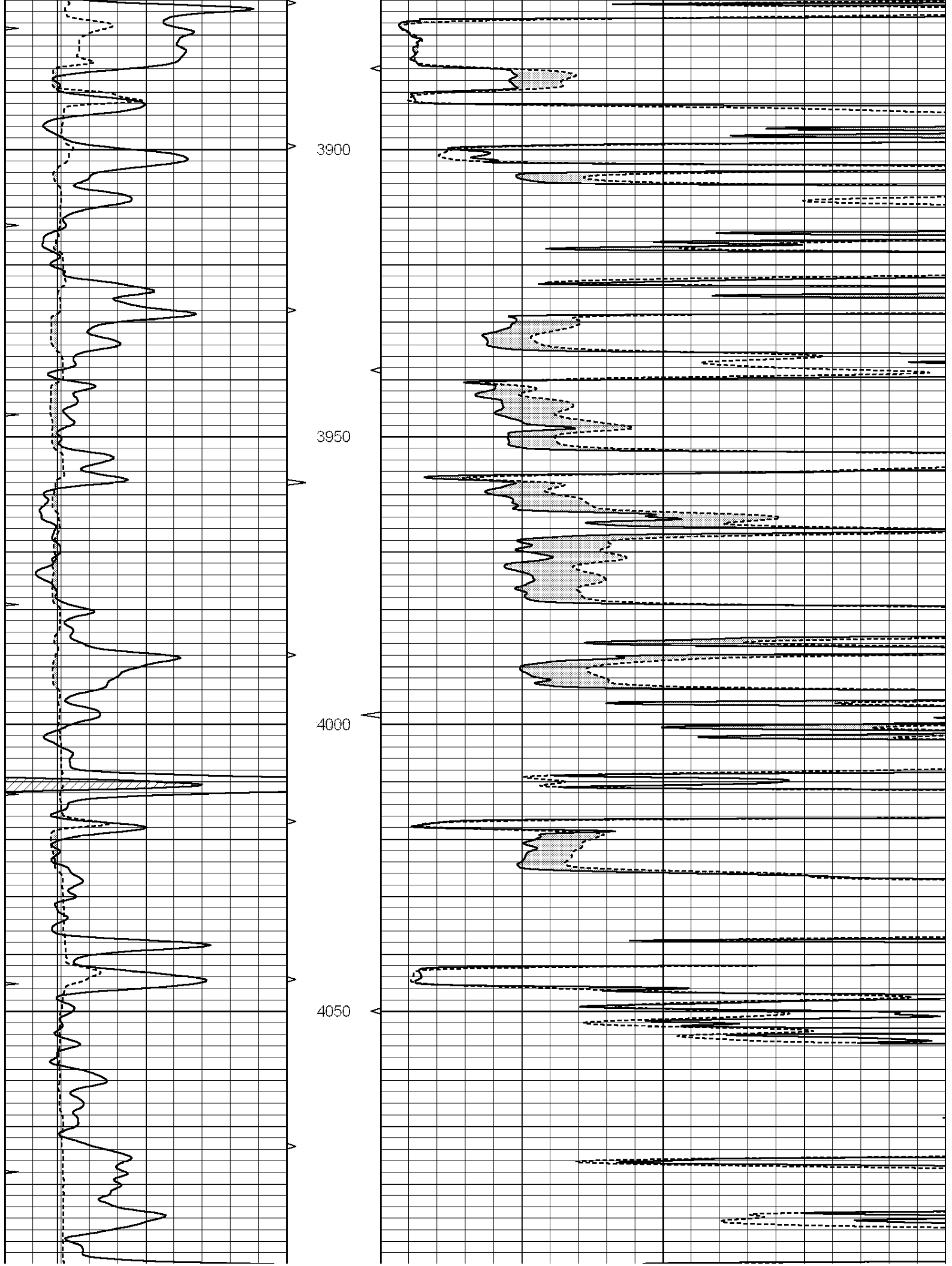
SUPERIOR
Hays,
Kansas

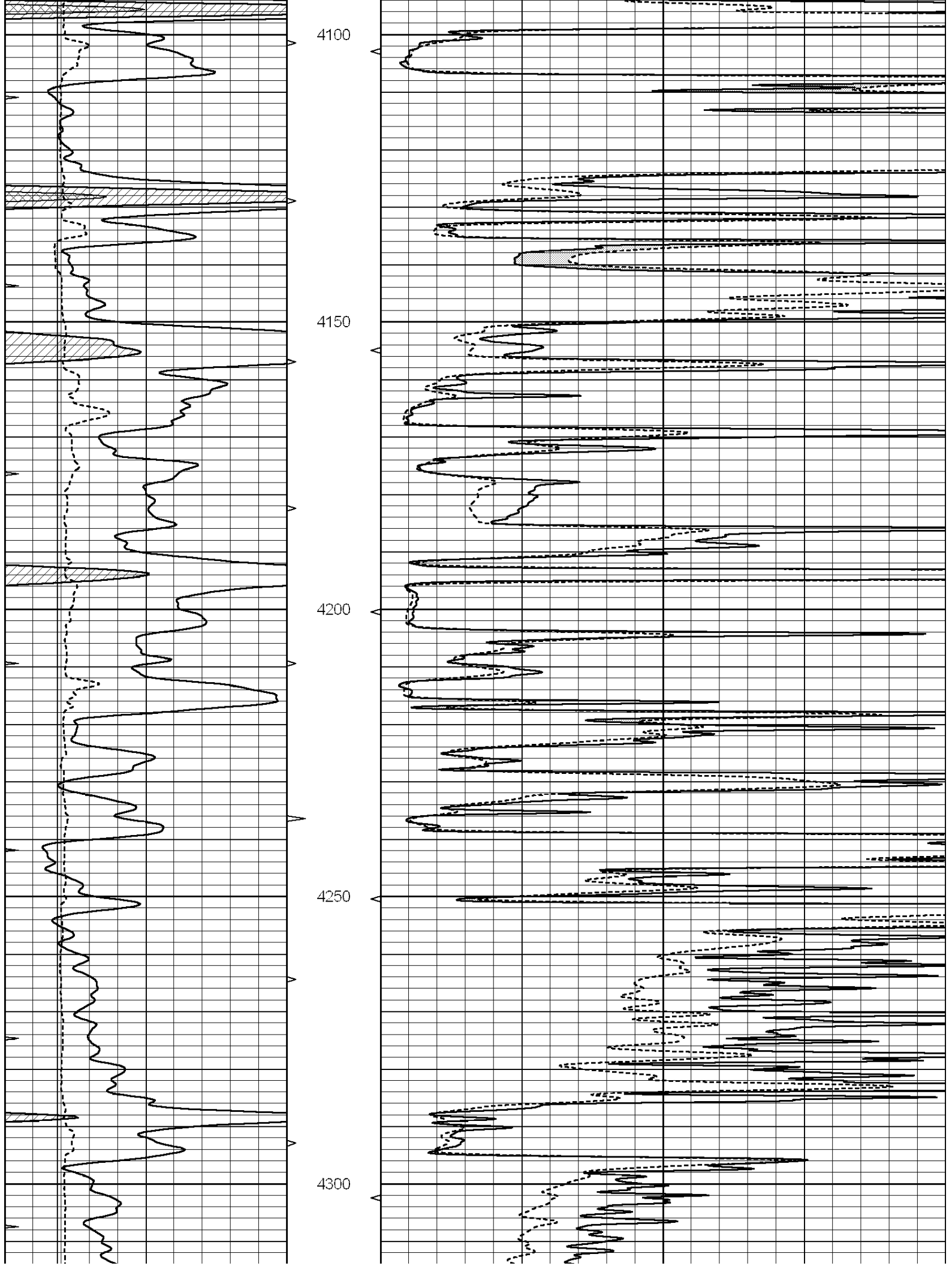
MAIN SECTION

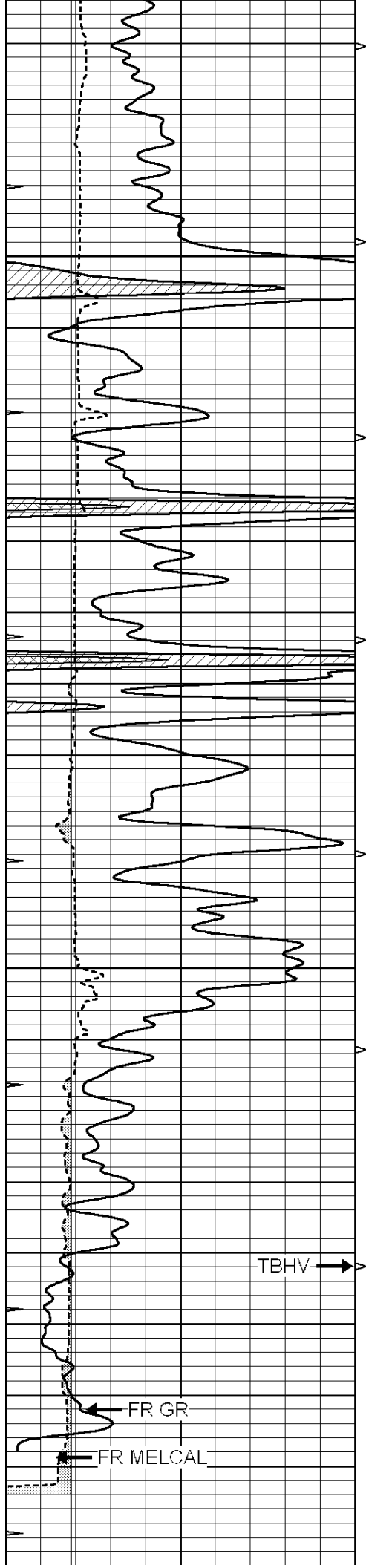
Database File: 006611pe.db
 Dataset Pathname: pass6.4
 Presentation Format: micro
 Dataset Creation: Sat Mar 12 00:25:54 2011
 Charted by: Depth in Feet scaled 1:240

0	GAMMA RAY (GAPI)	150	ABHV	0	MEL1.5 (Ohm-m)	40
6	CALIPER (in)	16	10 (ft3)	0	MEL2.0 (Ohm-m)	40
0	MINMK	20	TBHV			
			0 (ft3)	10		









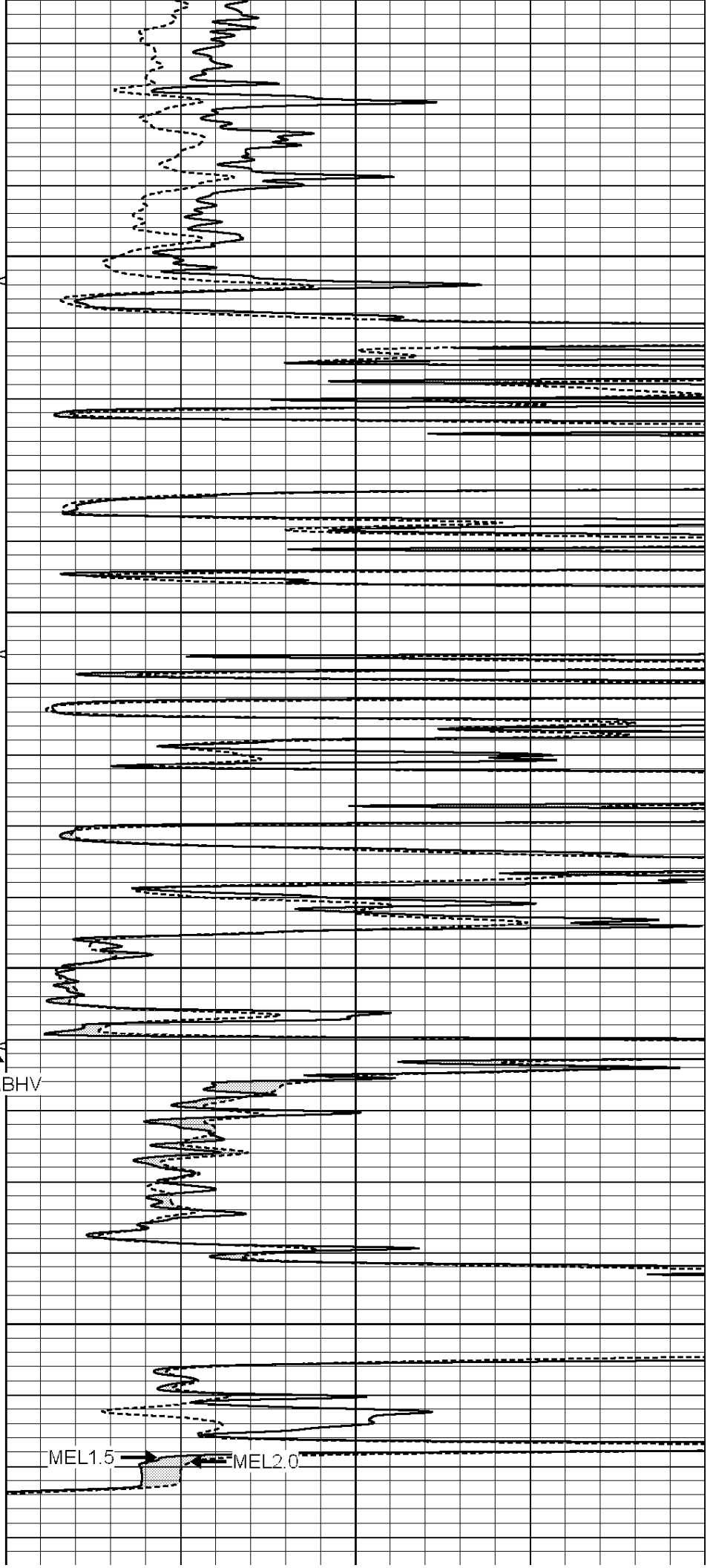
4350

4400

4450

4500

5.5" ABHV



MEL1.5

MEL2.0

			LTD 4542					
0	GAMMA RAY (GAPI)	150	ABHV	0	MEL1.5 (Ohm-m)	40		
6	CALIPER (in)	16	10 (ft3)	0	MEL2.0 (Ohm-m)	40		
0	MINMK	20	TBHV					
			0 (ft3)	10				

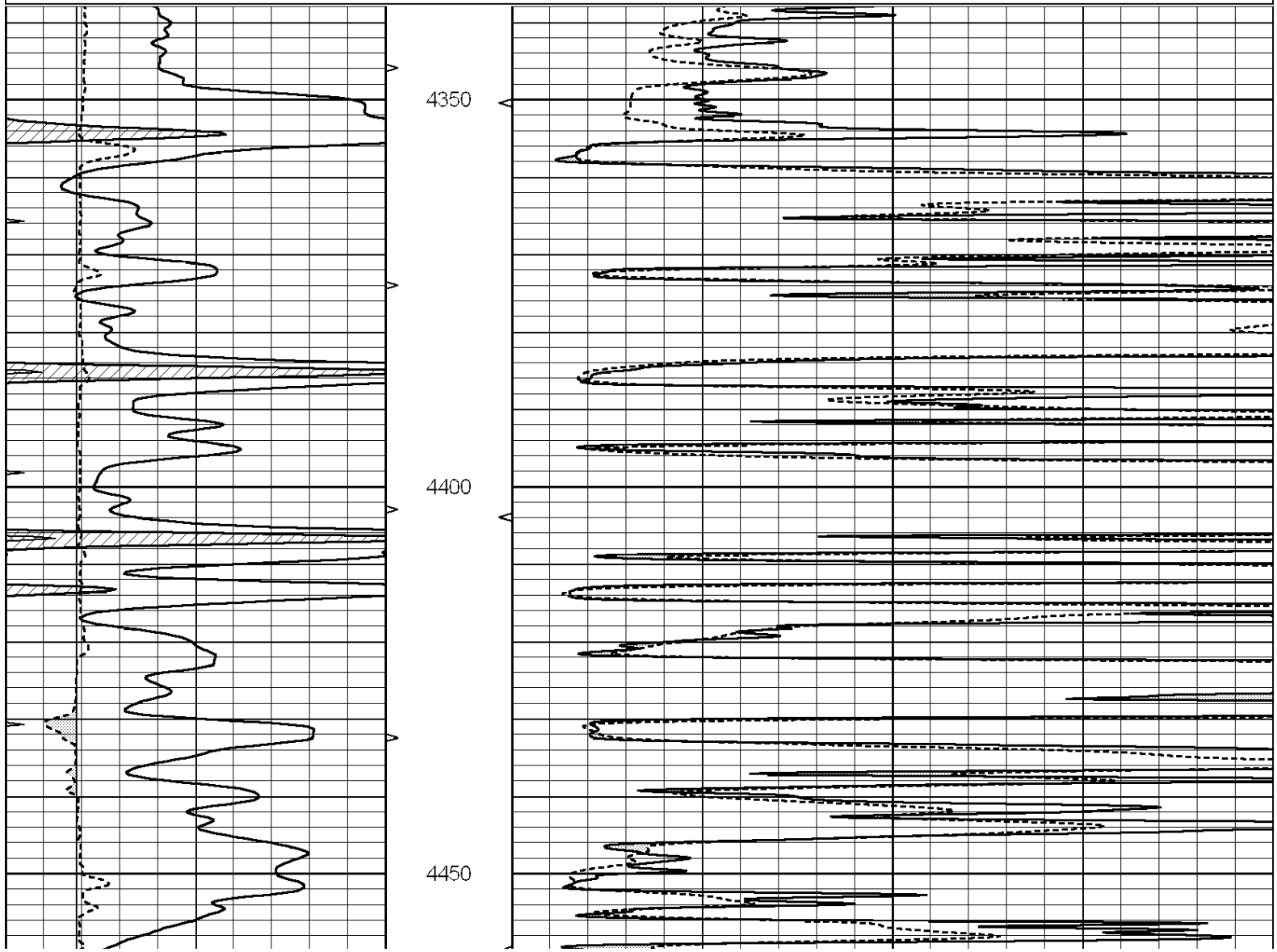


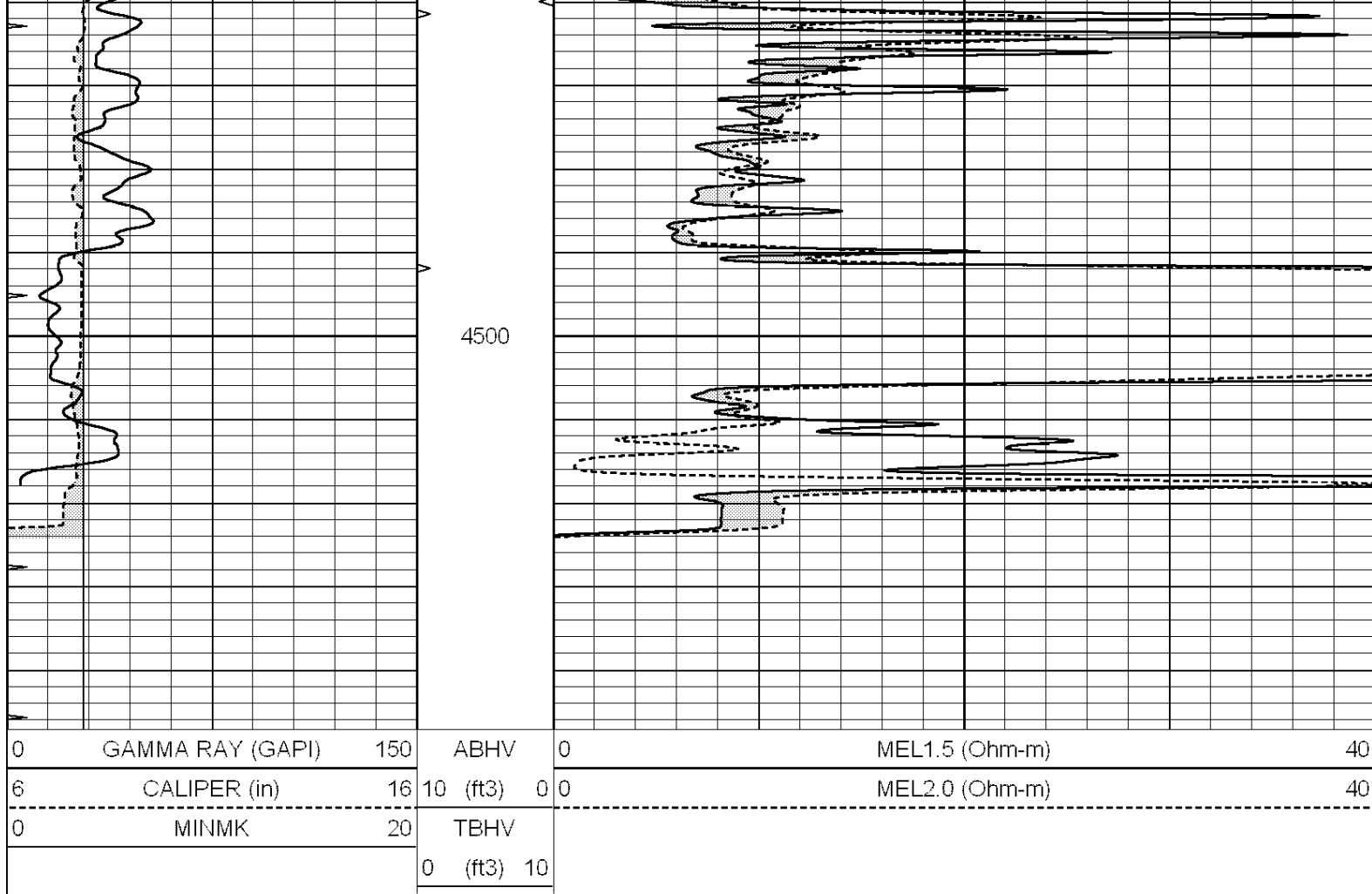
SUPERIOR
Hays,
Kansas

REPEAT SECTION

Database File: 006611pe.db
 Dataset Pathname: pass5.2
 Presentation Format: micro
 Dataset Creation: Sat Mar 12 00:05:28 2011
 Charted by: Depth in Feet scaled 1:240

0	GAMMA RAY (GAPI)	150	ABHV	0	MEL1.5 (Ohm-m)	40		
6	CALIPER (in)	16	10 (ft3)	0	MEL2.0 (Ohm-m)	40		
0	MINMK	20	TBHV					
			0 (ft3)	10				





Calibration Report

Database File: 006611pe.db
 Dataset Pathname: pass6.4
 Dataset Creation: Sat Mar 12 00:25:54 2011

MICRO Calibration Report

Serial Number:	MICRO5	
Tool Model:	PROBE	
Performed:	Fri Mar 11 23:09:48 2011	
Caliper Calibration:	Gain=5.773	Offset=-33.858
References	Low Cal	High Cal
Readings	7.600	15.000
	7.181	8.463
1.5" Calibration:	Gain=40.000	Offset=-1.000
References	Low Cal	High Cal
Readings	0.000	20.000
	0.008	0.991
2" Calibration:	Gain=48.000	Offset=-1.500
References	Low Cal	High Cal
Readings	0.000	20.000
	0.014	0.905

Gamma Ray Calibration Report

Serial Number:	GR4
Tool Model:	OPEN

Performed: Fri Mar 11 23:52:34 2011

Calibrator Value: 200.0 GAPI

Background Reading: 0.0 cps

Calibrator Reading: 189.0 cps

Sensitivity: 1.5000 GAPI/cps