



**SUPERIOR**  
Hays,  
Kansas

**SONIC**  
LOG

Company MULL DRILLING COMPANY, INC.  
Well #1-32 BABCOCK "B"  
Field WILDCAT  
County GOVE  
State KANSAS

Company MULL DRILLING COMPANY, INC.  
Well #1-32 BABCOCK "B"  
Field WILDCAT  
County GOVE State KANSAS

Location: API # : 15-063-21891-0000  
2502' FNL & 1209' FEL  
SEC 32 TWP 15S RGE 26W  
Permanent Datum GROUND LEVEL Elevation 2542  
Log Measured From KELLY BUSHING 9' A.G.L.  
Drilling Measured From KELLY BUSHING  
Other Services  
CDL/CNL/PE  
DIL/MEL  
Elevation  
K.B. 2551  
D.F. 2549  
G.L. 2542

Date	3/11/11
Run Number	TWO
Depth Driller	4540
Depth Logger	4542
Bottom Logged Interval	4529
Top Log Interval	200
Casing Driller	8 5/8"@238'
Casing Logger	238
Bit Size	7 7/8"
Type Fluid in Hole	CHEMICAL MUD
Density / Viscosity	9.2/55
pH / Fluid Loss	10.0/8.8
Source of Sample	FLOWLINE
Rim @ Meas. Temp	1.30@80F
Rmf @ Meas. Temp	.975@80F
Rmc @ Meas. Temp	1.56@80F
Source of Rmf / Rmc	MEASUREMENT
Rim @ BHT	.860@121F
Time Circulation Stopped	4.5 HOURS
Time Logger on Bottom	9:30 P.M.
Maximum Recorded Temperature	121F
Equipment Number	0836
Location	HAYS, KANSAS
Recorded By	JEFF LUEBBERS
Witnessed By	KEVIN KESSLER

<<< Fold Here >>>

All interpretations are opinions based on inferences from electrical or other measurements and we cannot and do not guarantee the accuracy or correctness of any interpretation, and we shall not, except in the case of gross or willful negligence on our part, be liable or responsible for any loss, costs, damages, or expenses incurred or sustained by anyone resulting from any interpretation made by any of our officers, agents or employees. These interpretations are also subject to our general terms and conditions set out in our current Price Schedule.

Comments

THANK YOU FOR USING SUPERIOR WELL SERVICE HAYS, KANSAS (785) 628-6395  
DIRECTIONS  
UTICA, KS. 3W. ON HWY 4 TO "CASTLE ROCK RD.", 4N., E. INTO@CURVE IN THE RD.

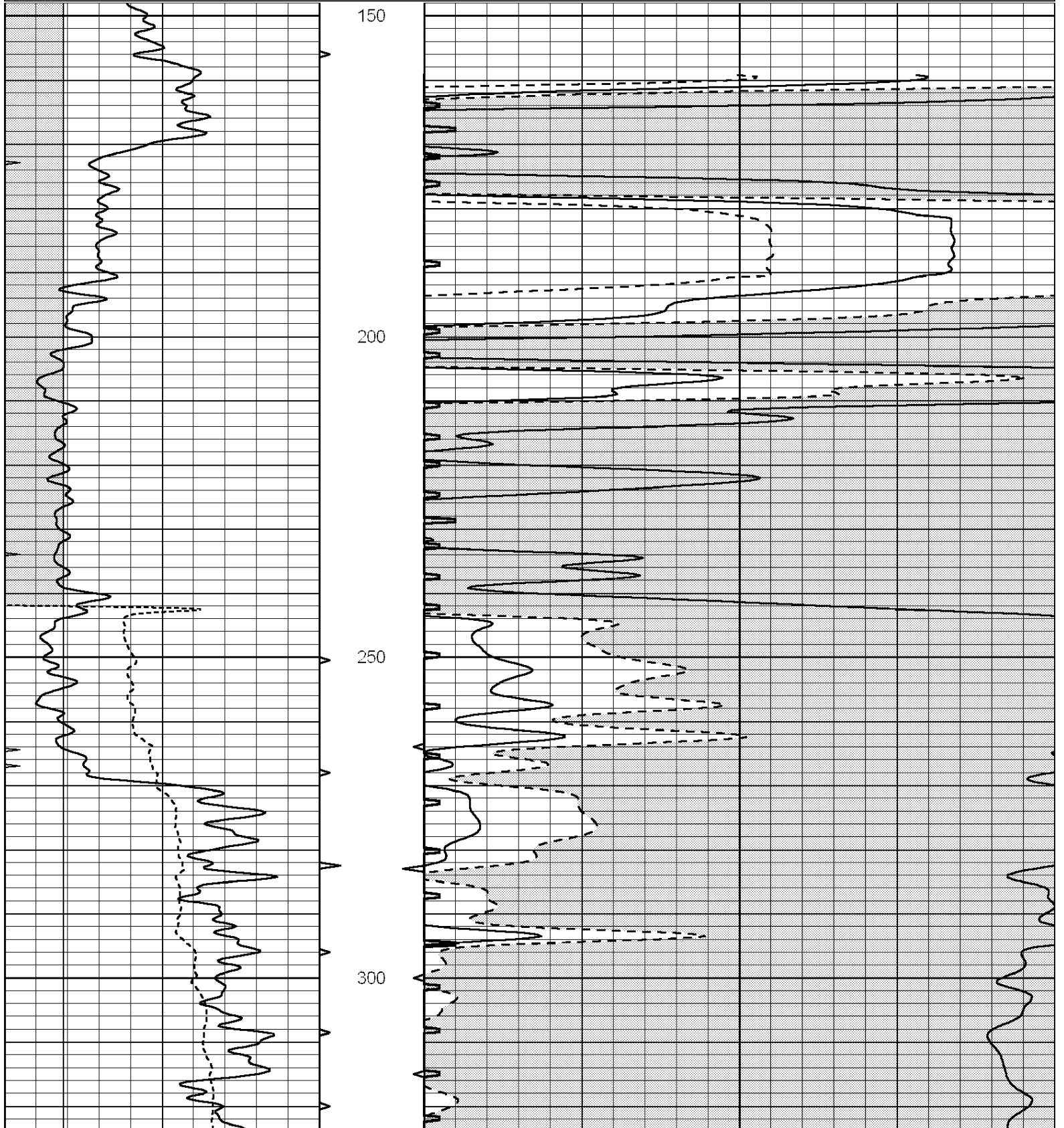


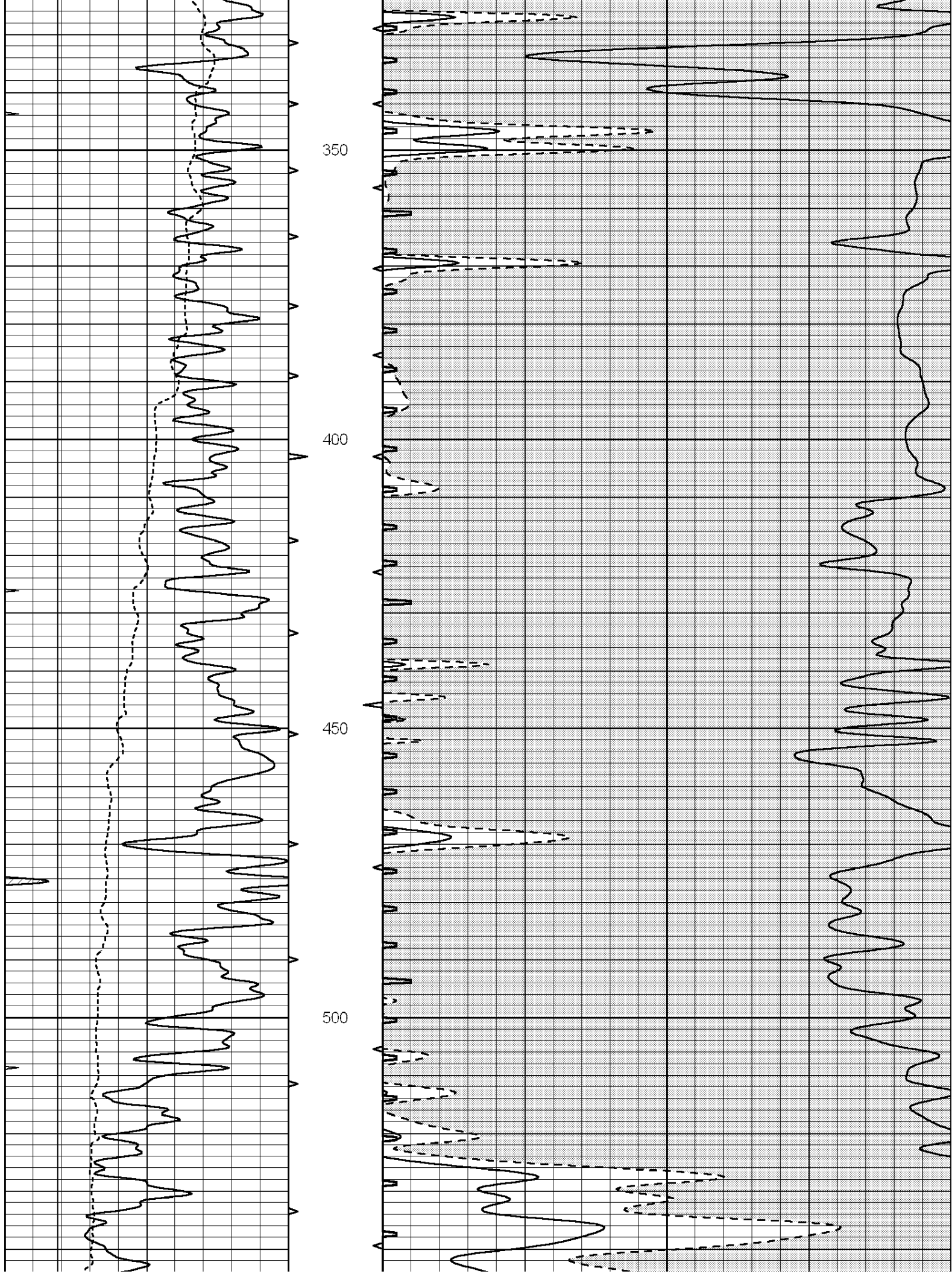
**SUPERIOR**  
Hays,  
Kansas

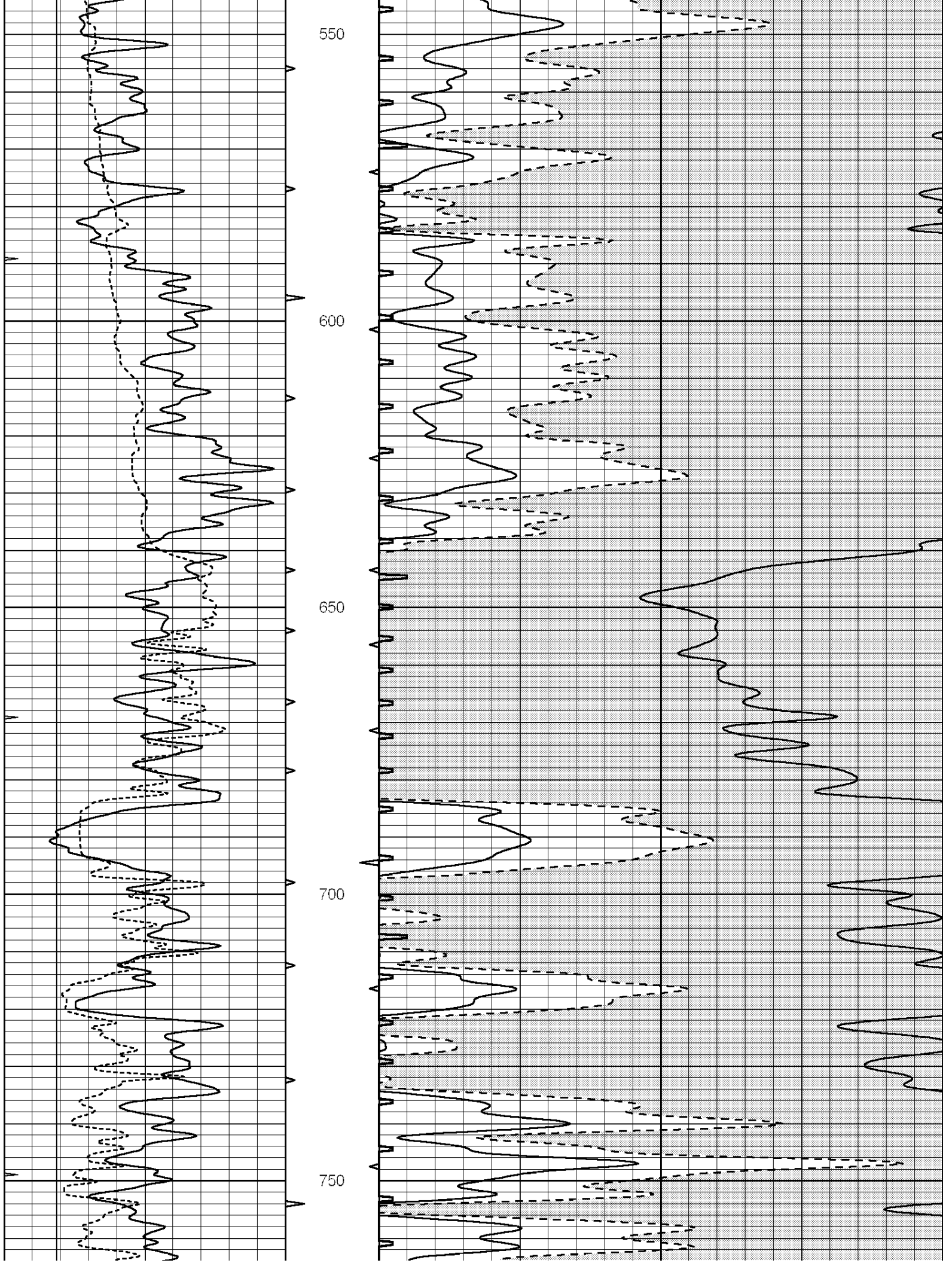
**MAIN SECTION**

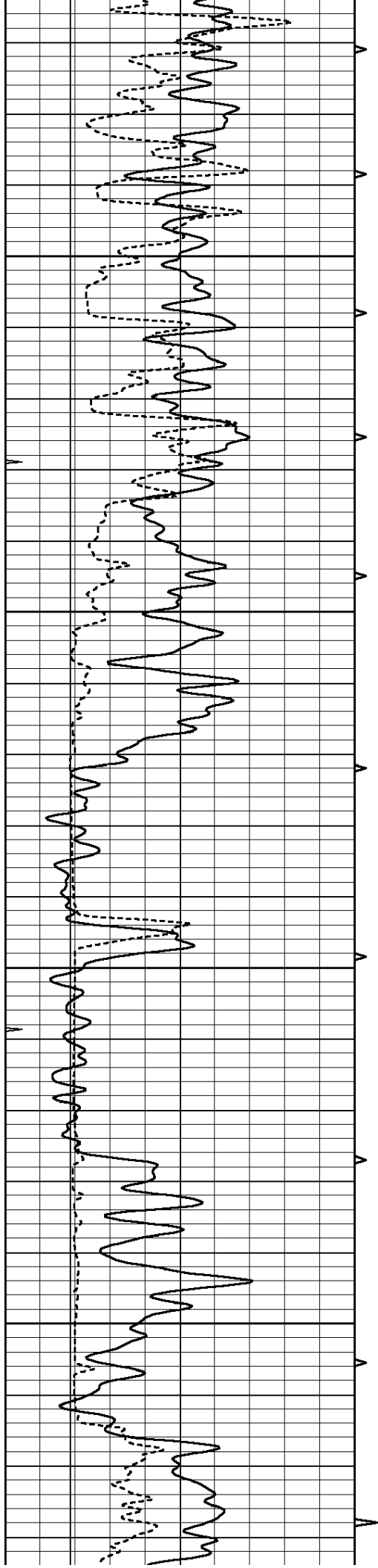
Database File: 006611pe.db  
 Dataset Pathname: pass6.7  
 Presentation Format: slt  
 Dataset Creation: Sat Mar 12 01:33:35 2011  
 Charted by: Depth in Feet scaled 1:240

0	GAMMA RAY (GAPI)	150	ABHV	140	DELTA TIME (usec/ft)	40	
6	CALIPER (in)	16	10 (ft3)	0	30	SONIC POROSITY (pu)	-10
0	MINMK	20	TBHV	0	ITT (msec)	20	
			0 (ft3)	10			







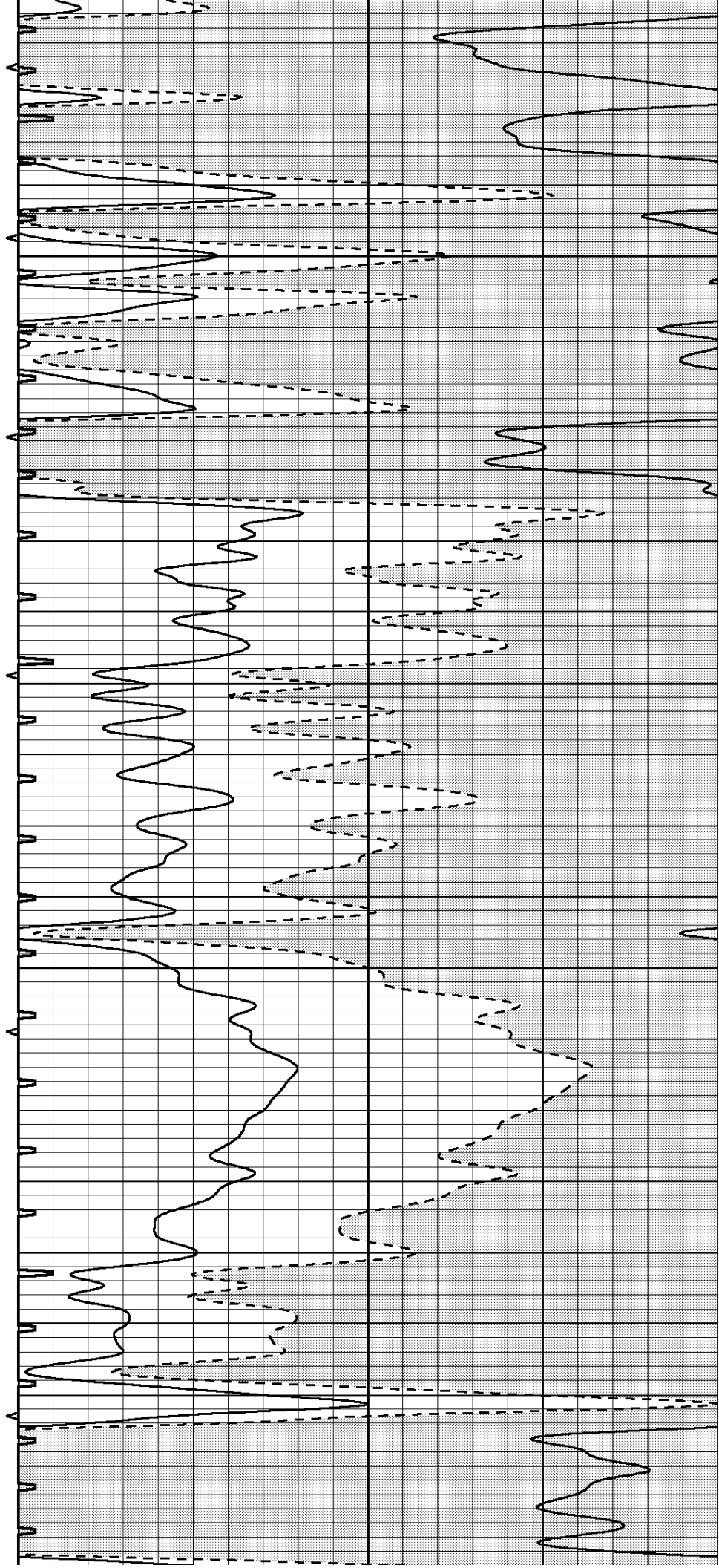


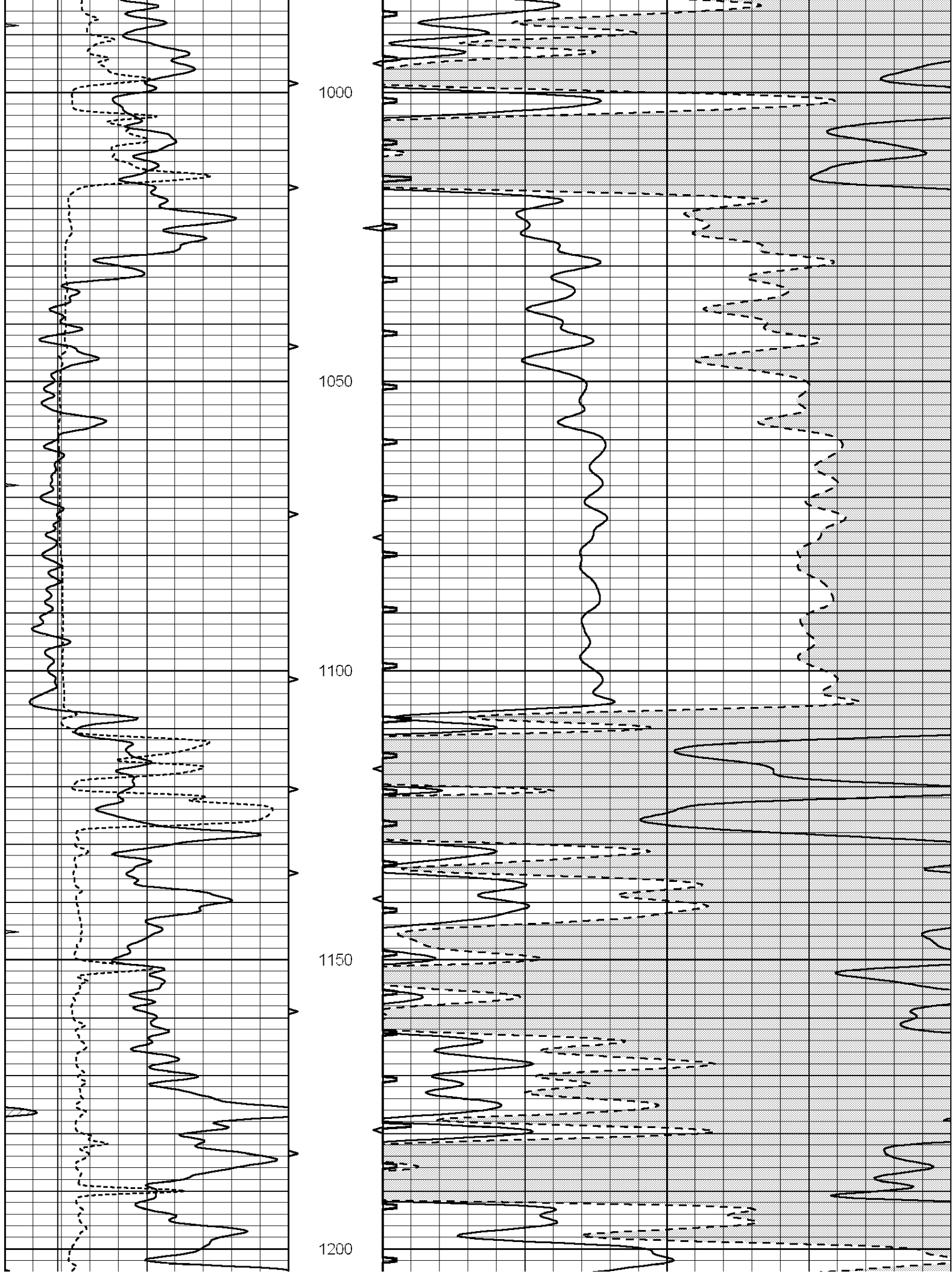
800

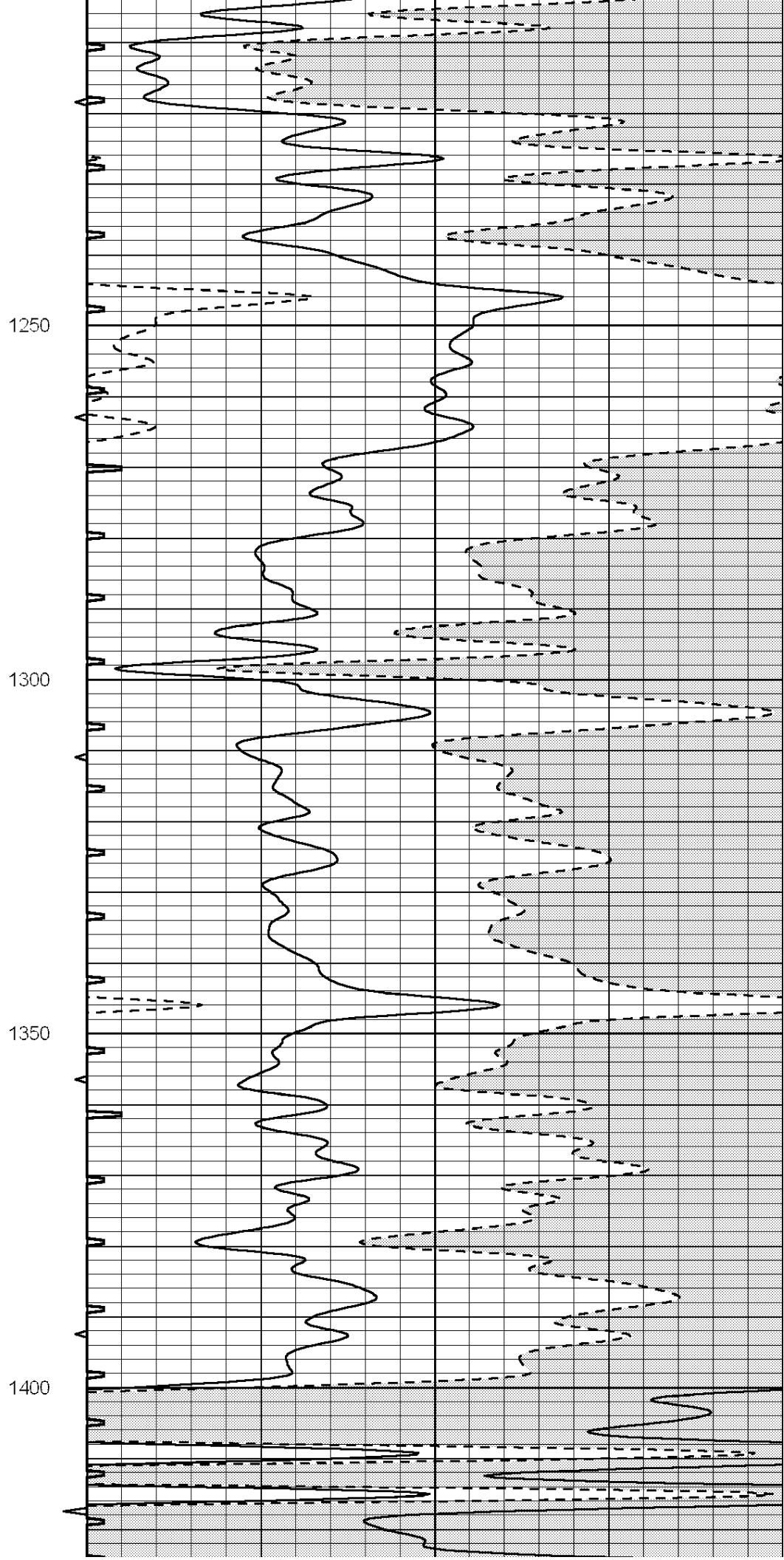
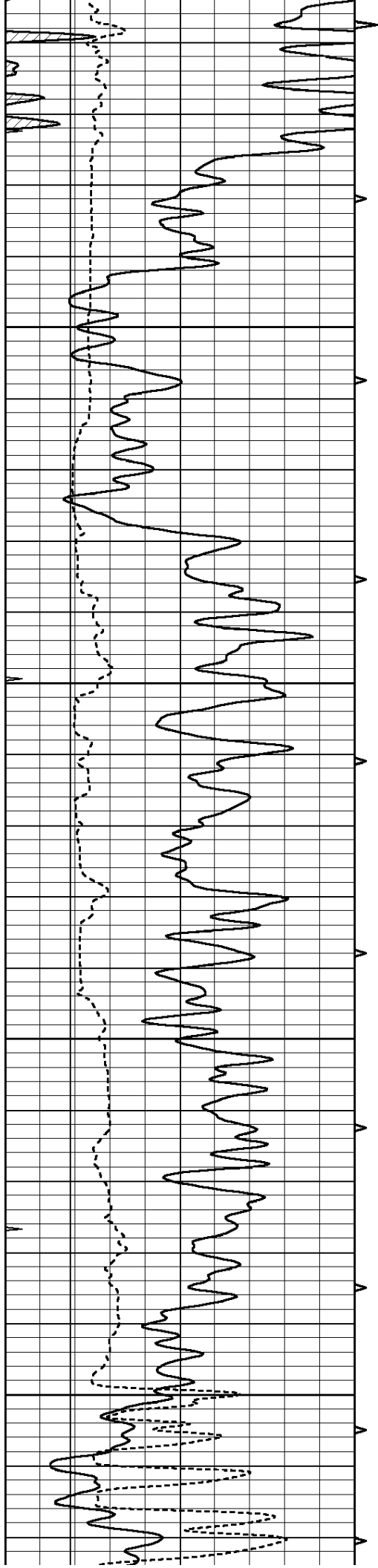
850

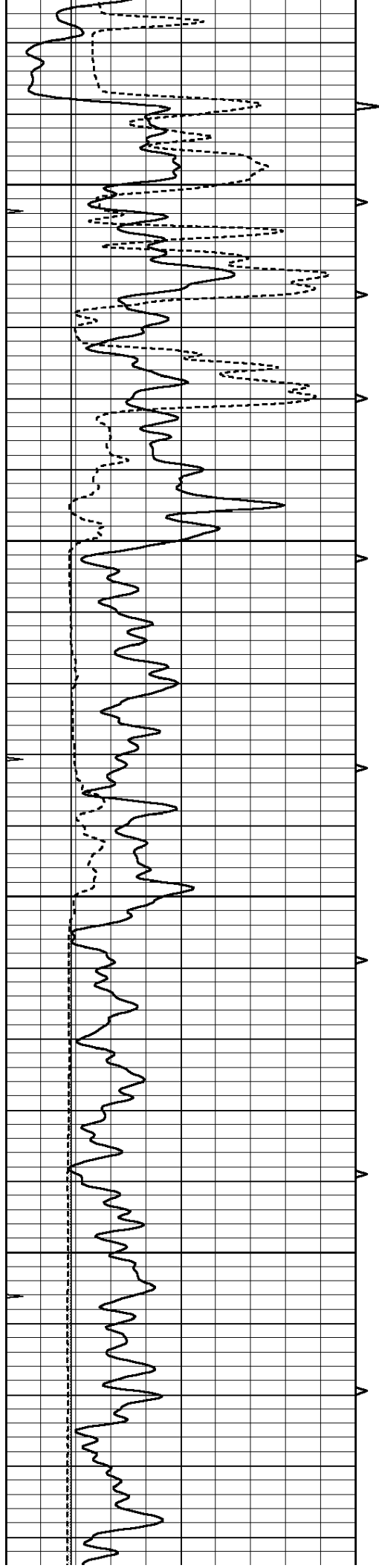
900

950







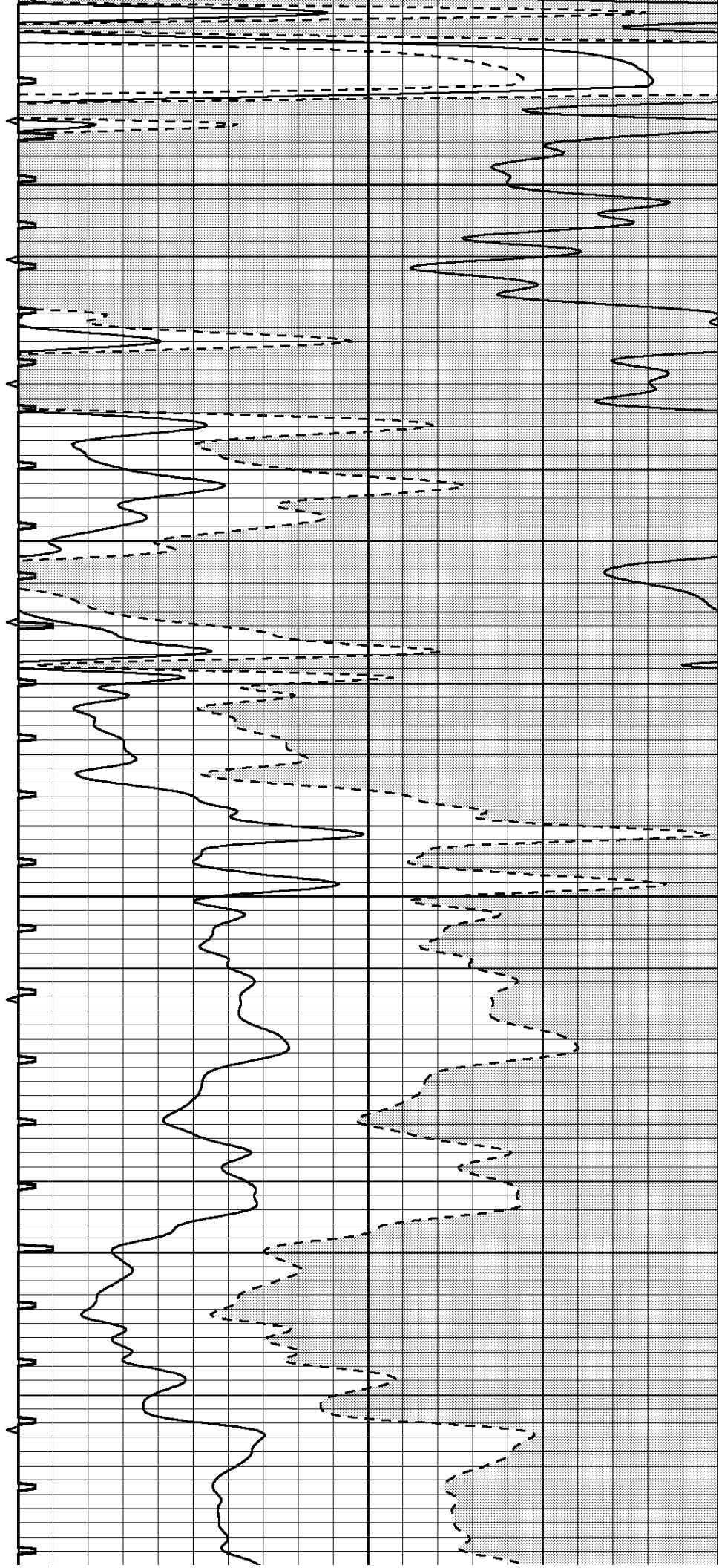


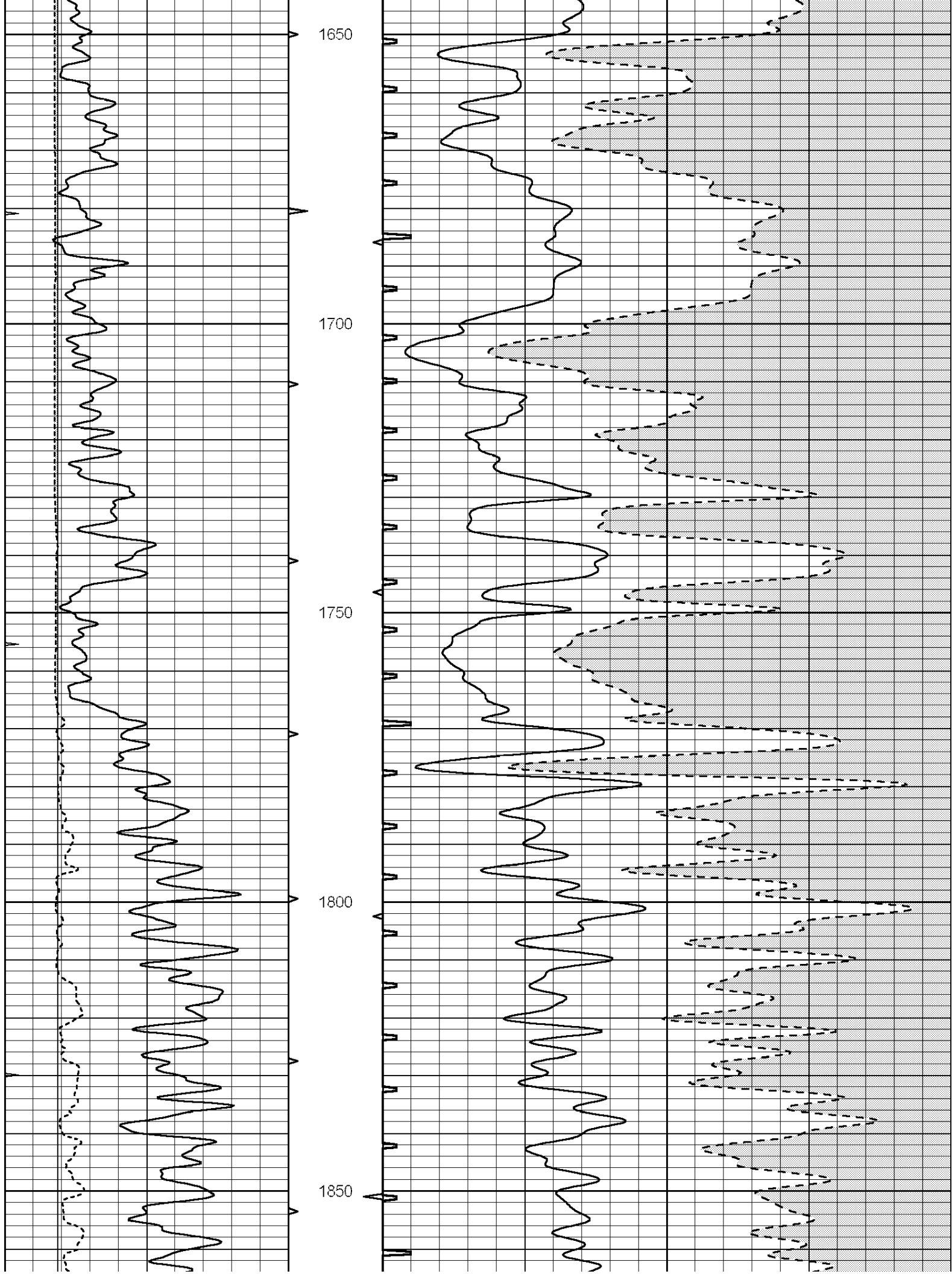
1450

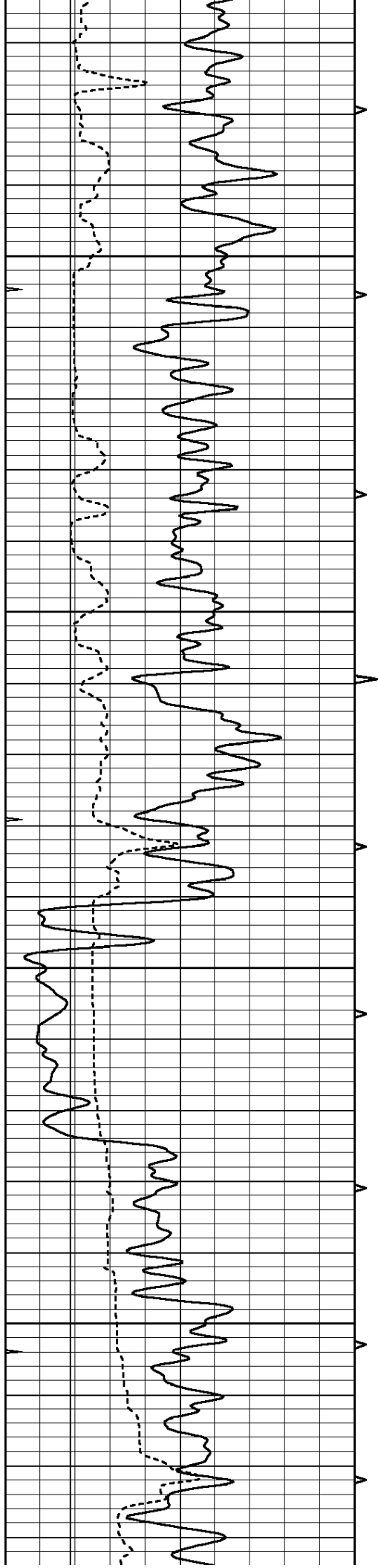
1500

1550

1600





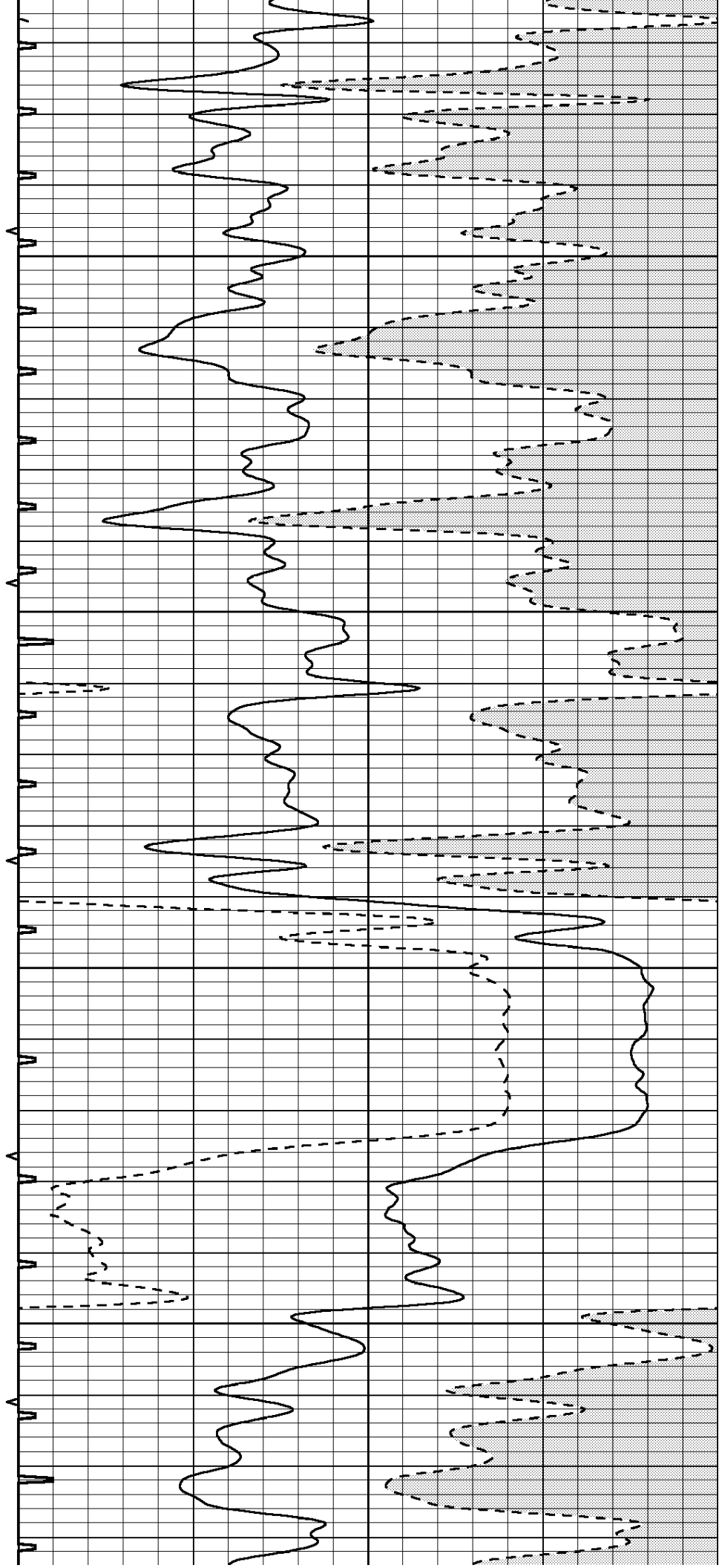


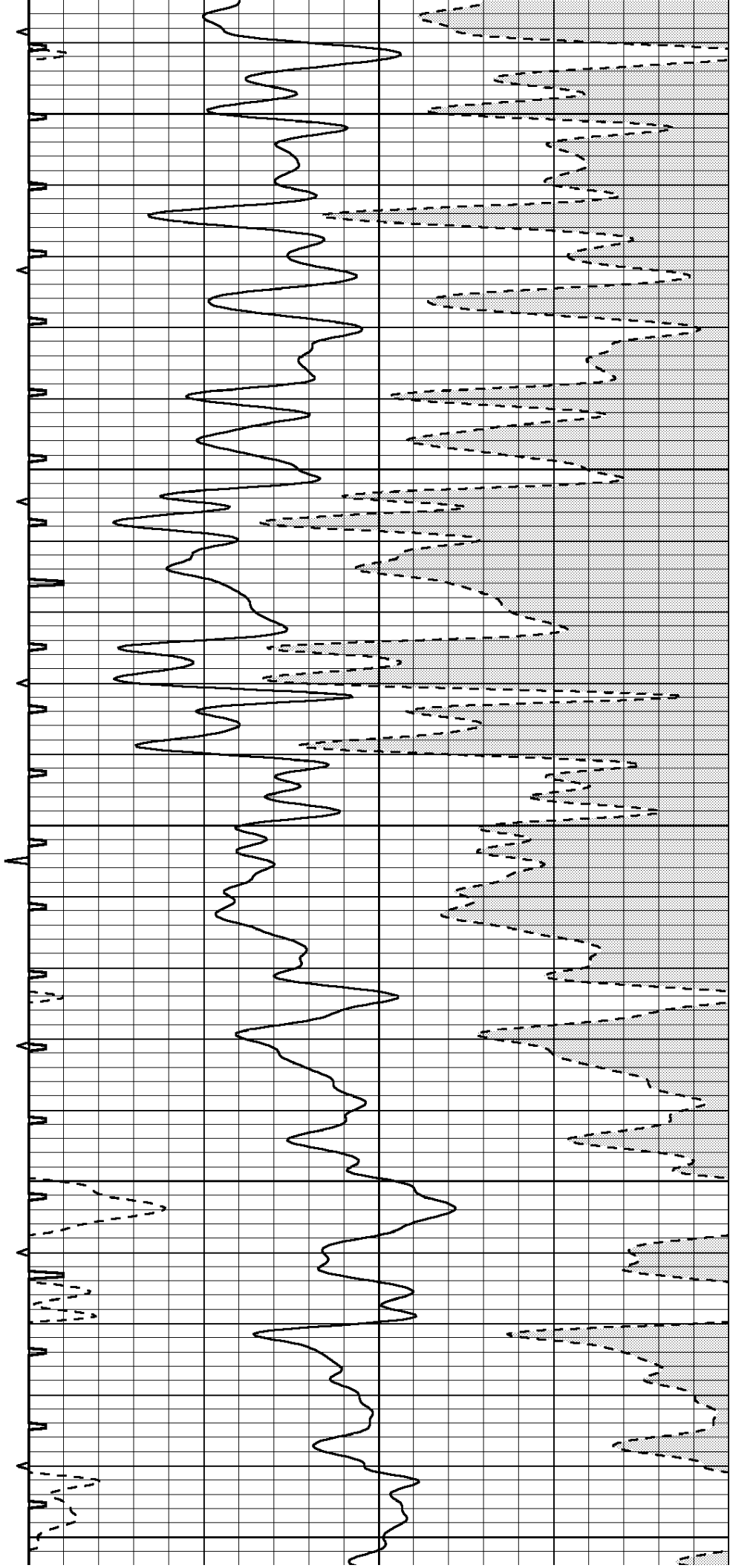
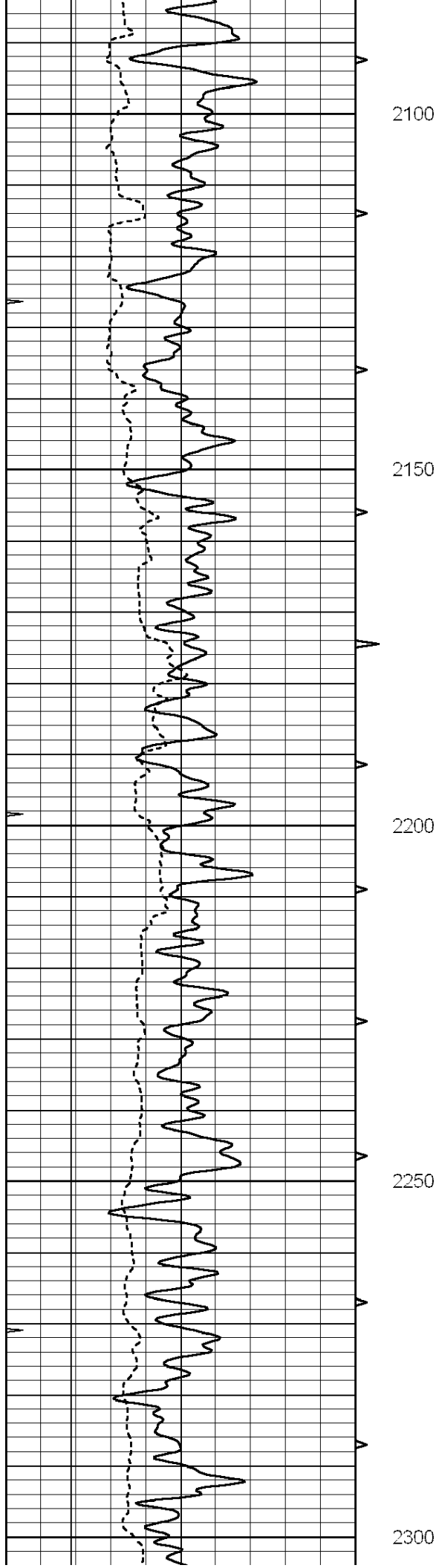
1900

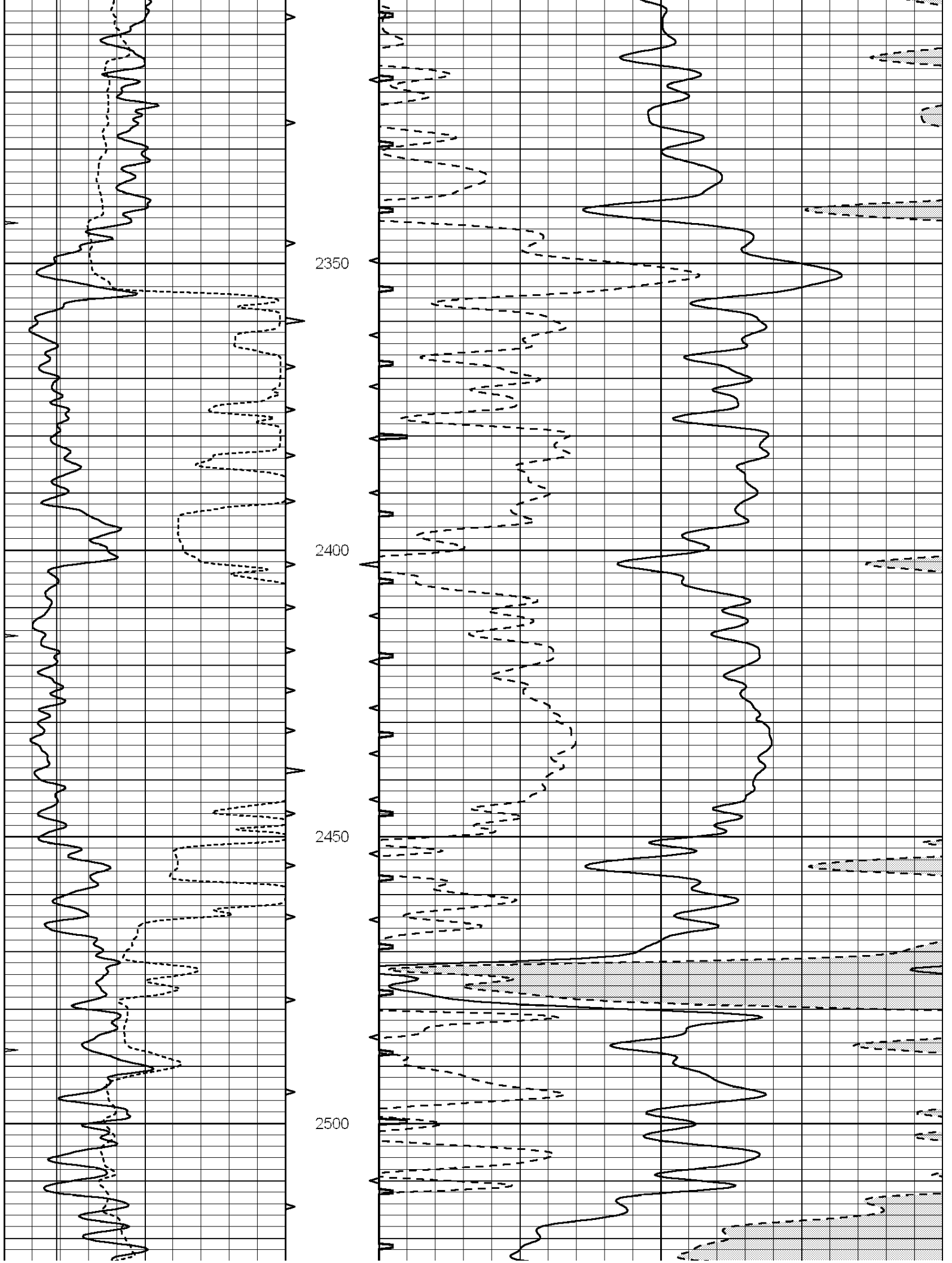
1950

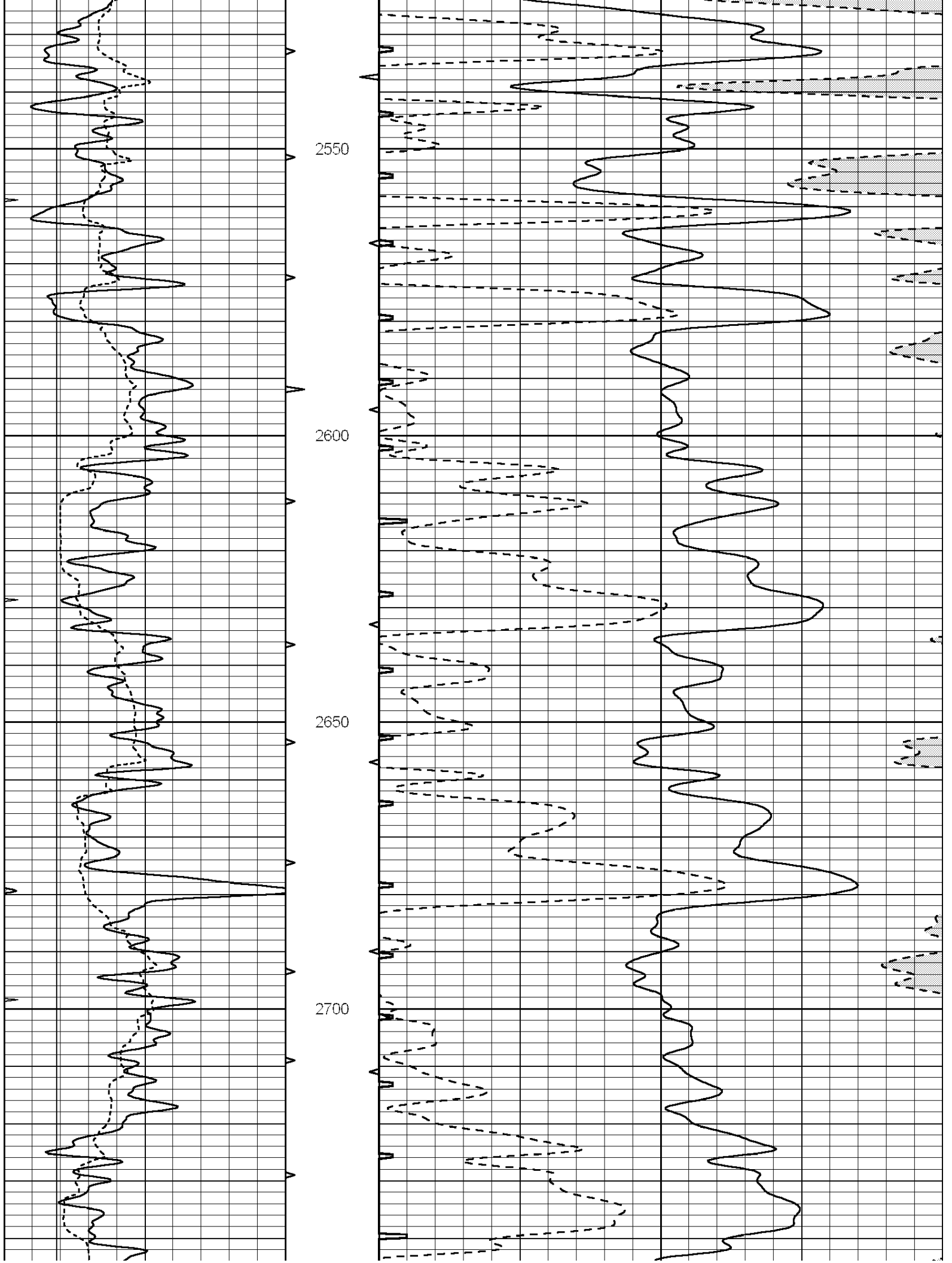
2000

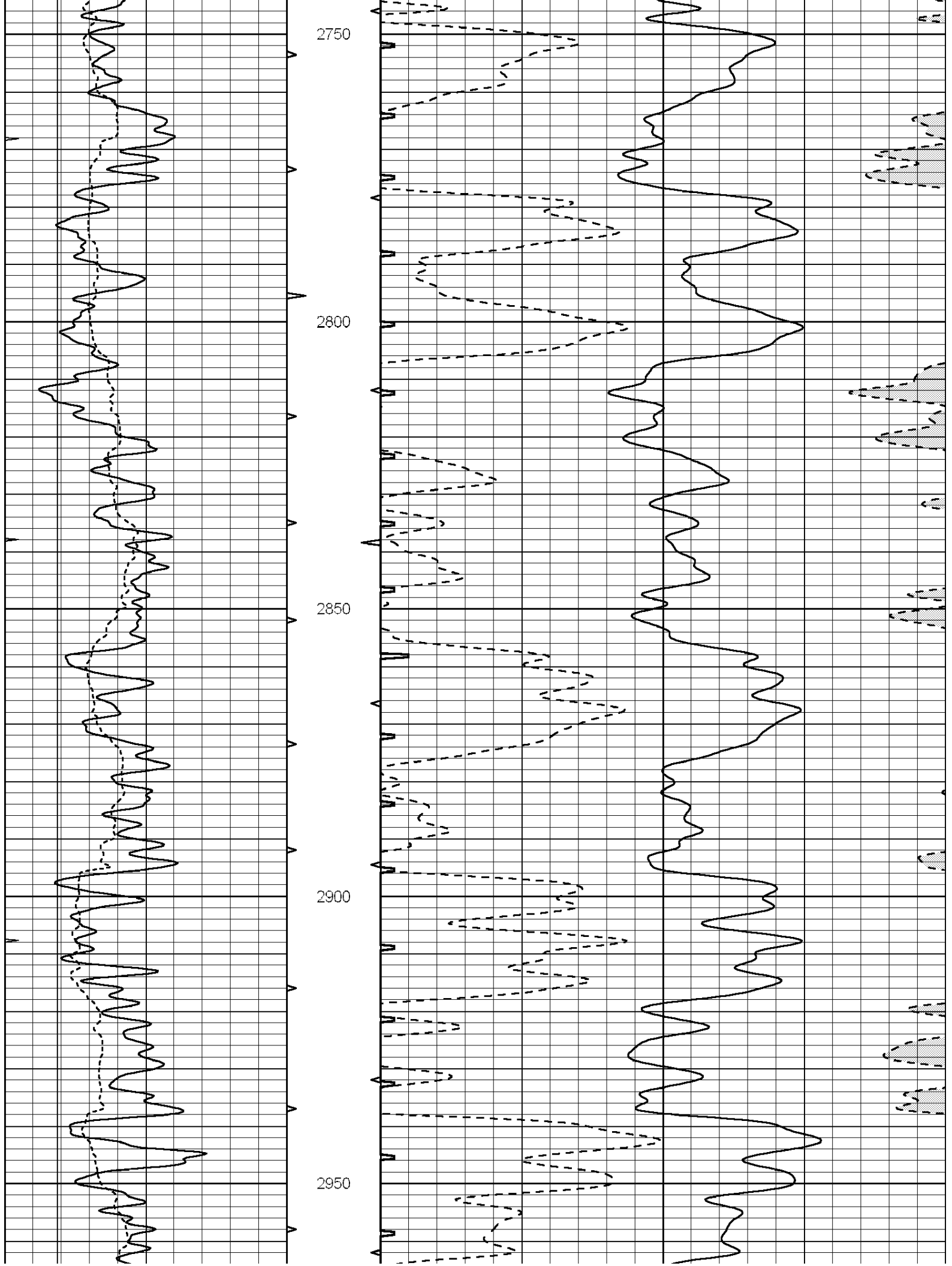
2050

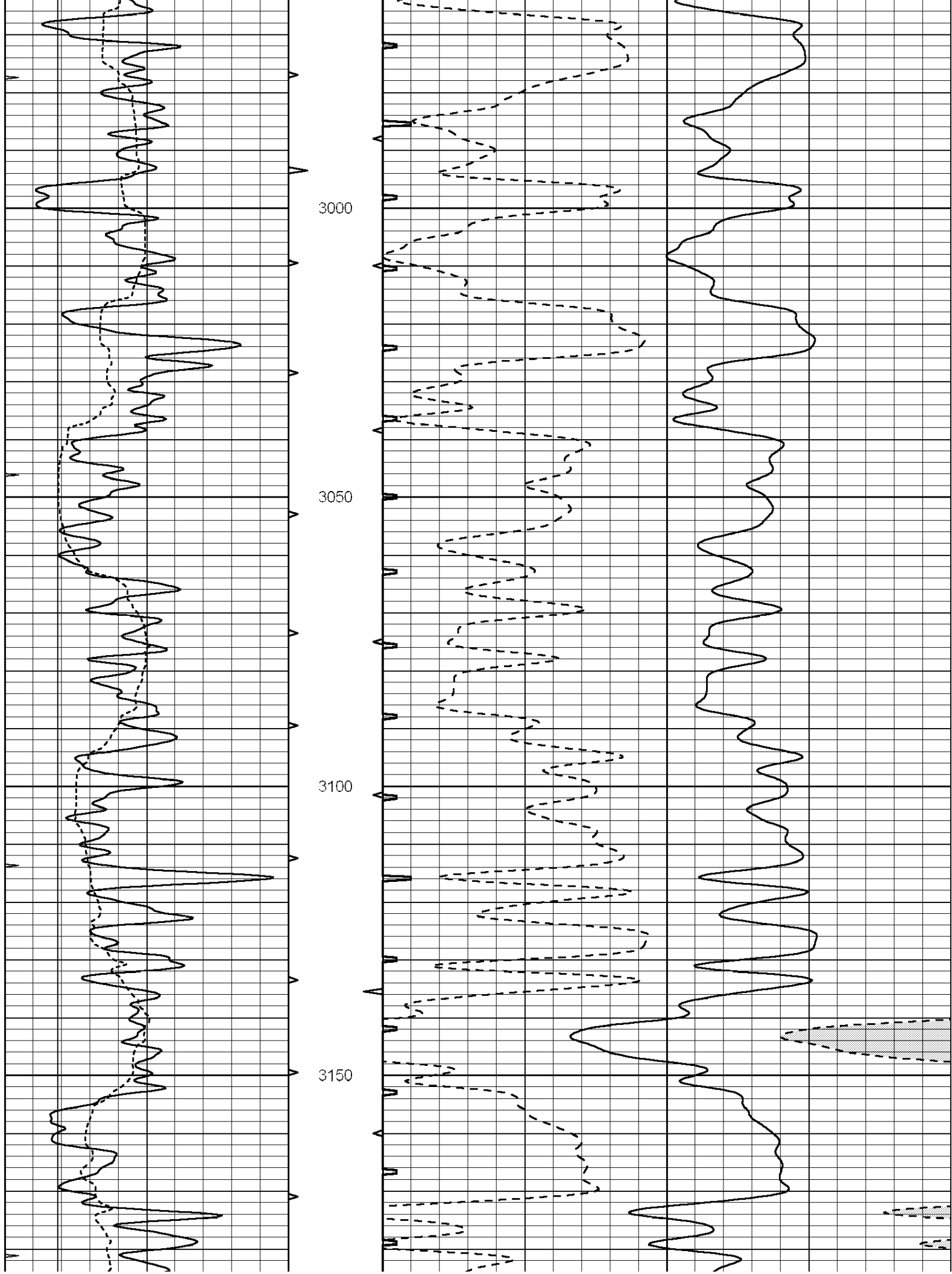


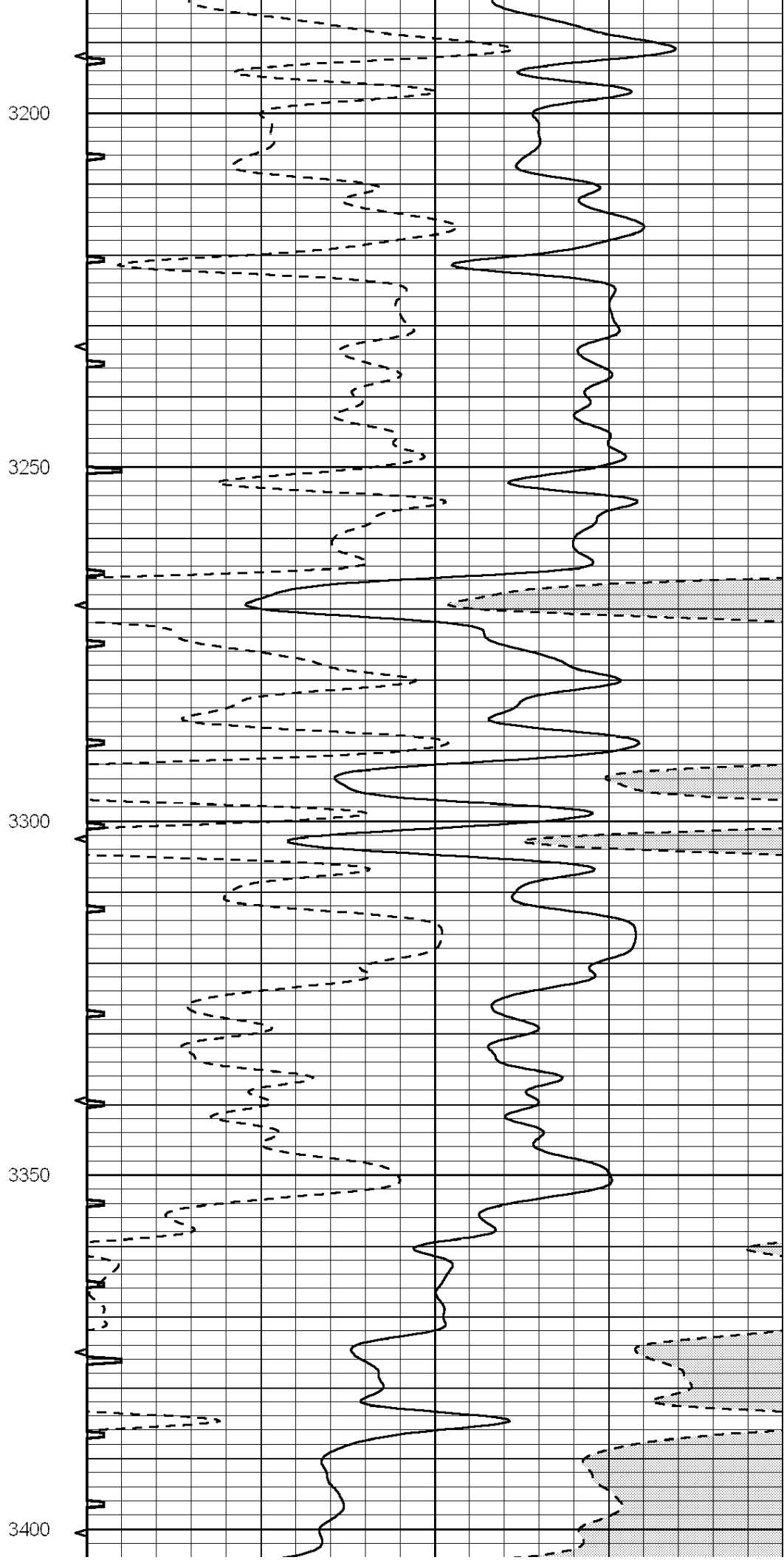
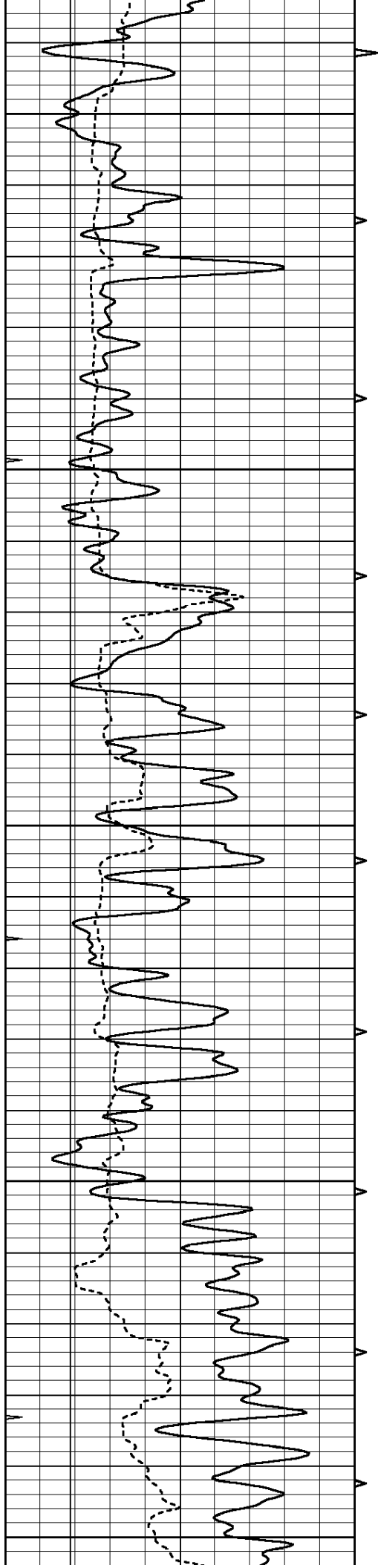


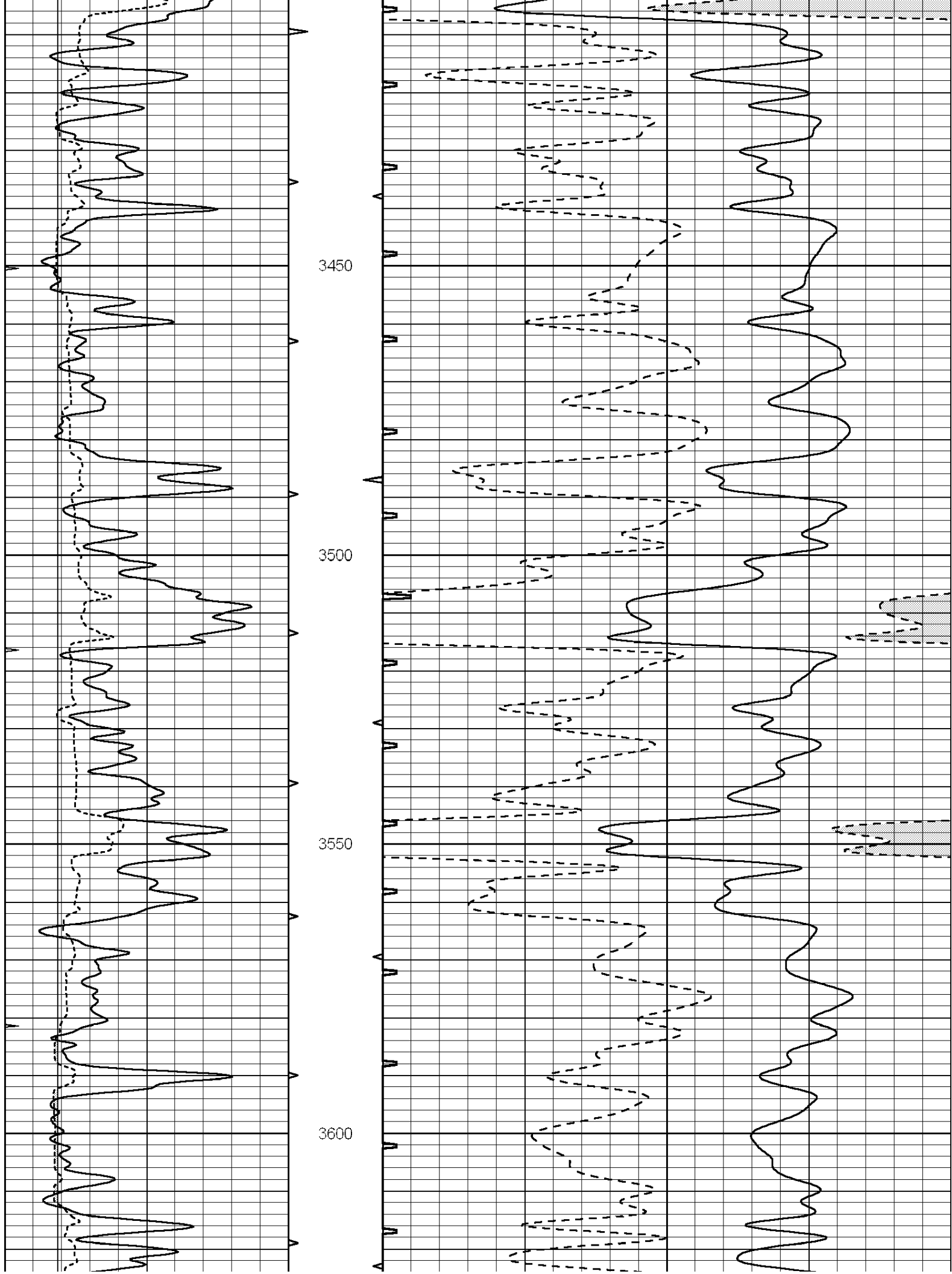


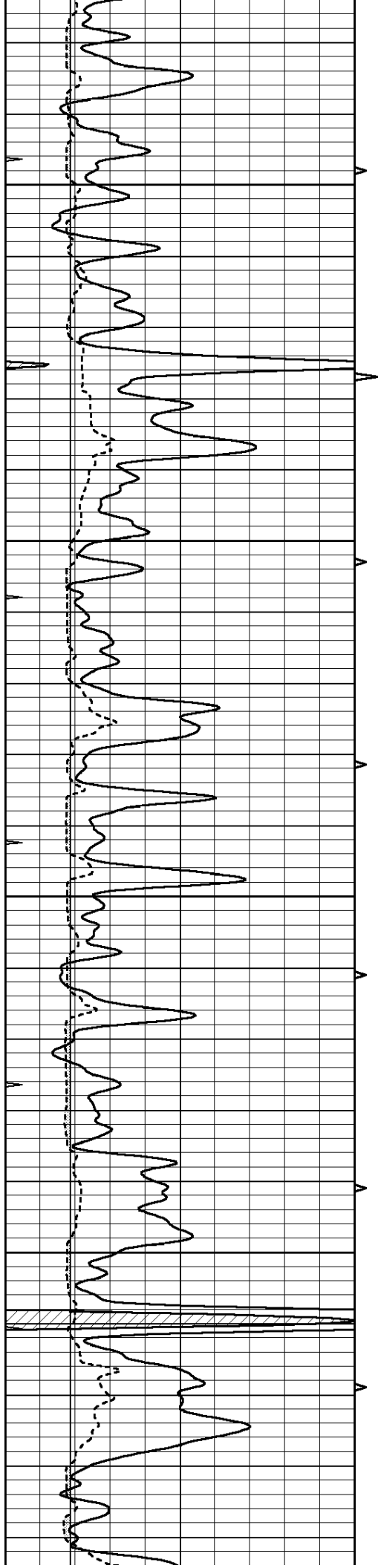










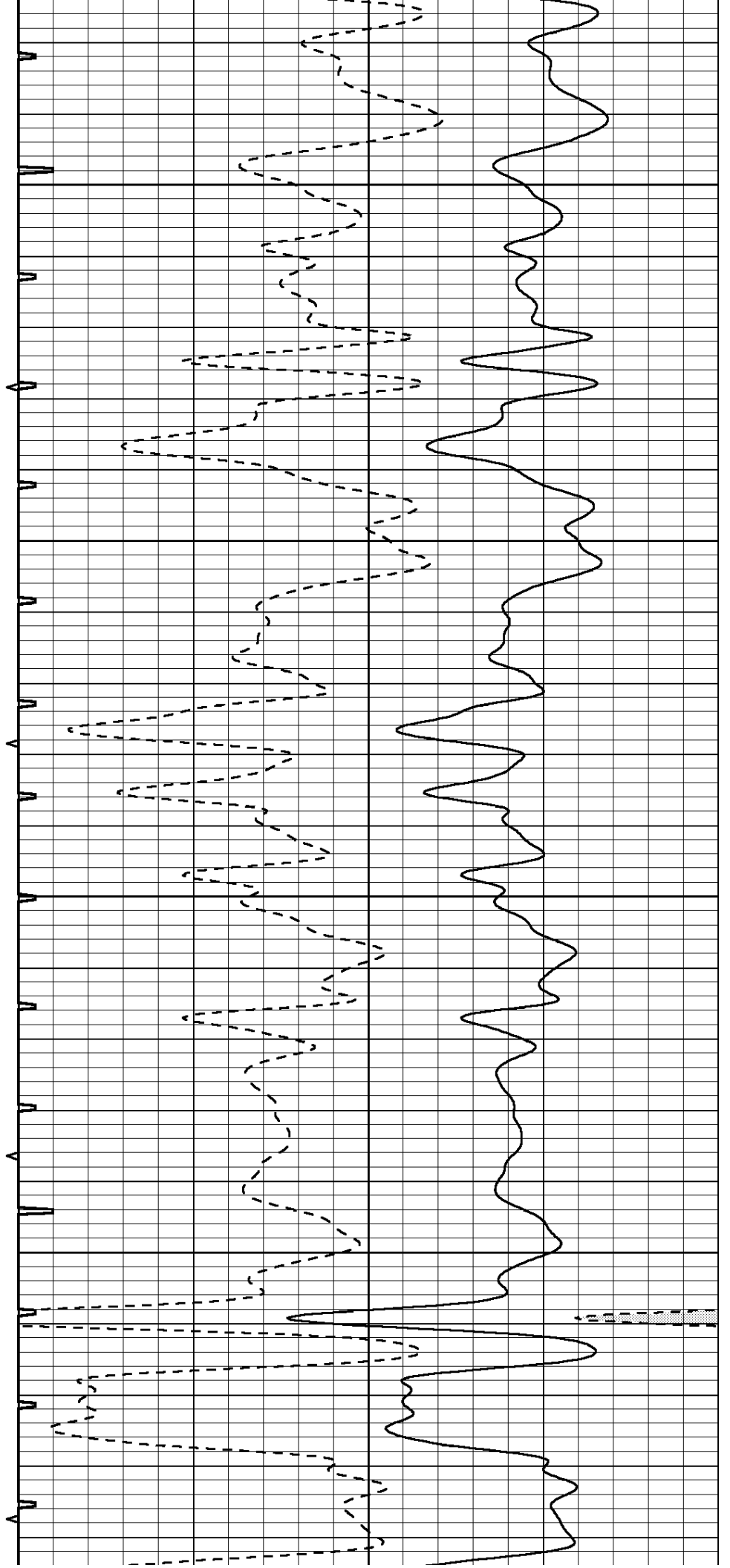


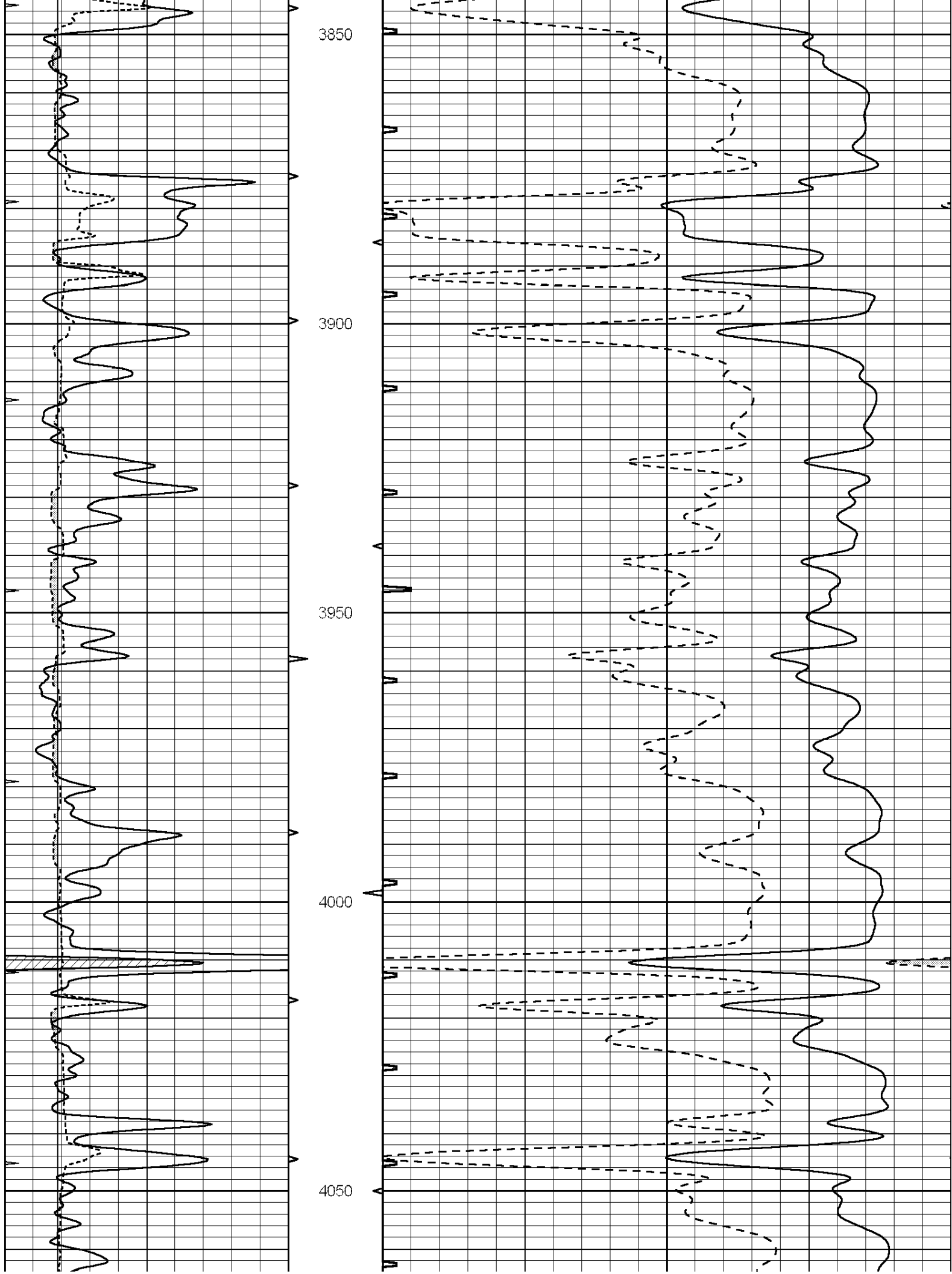
3650

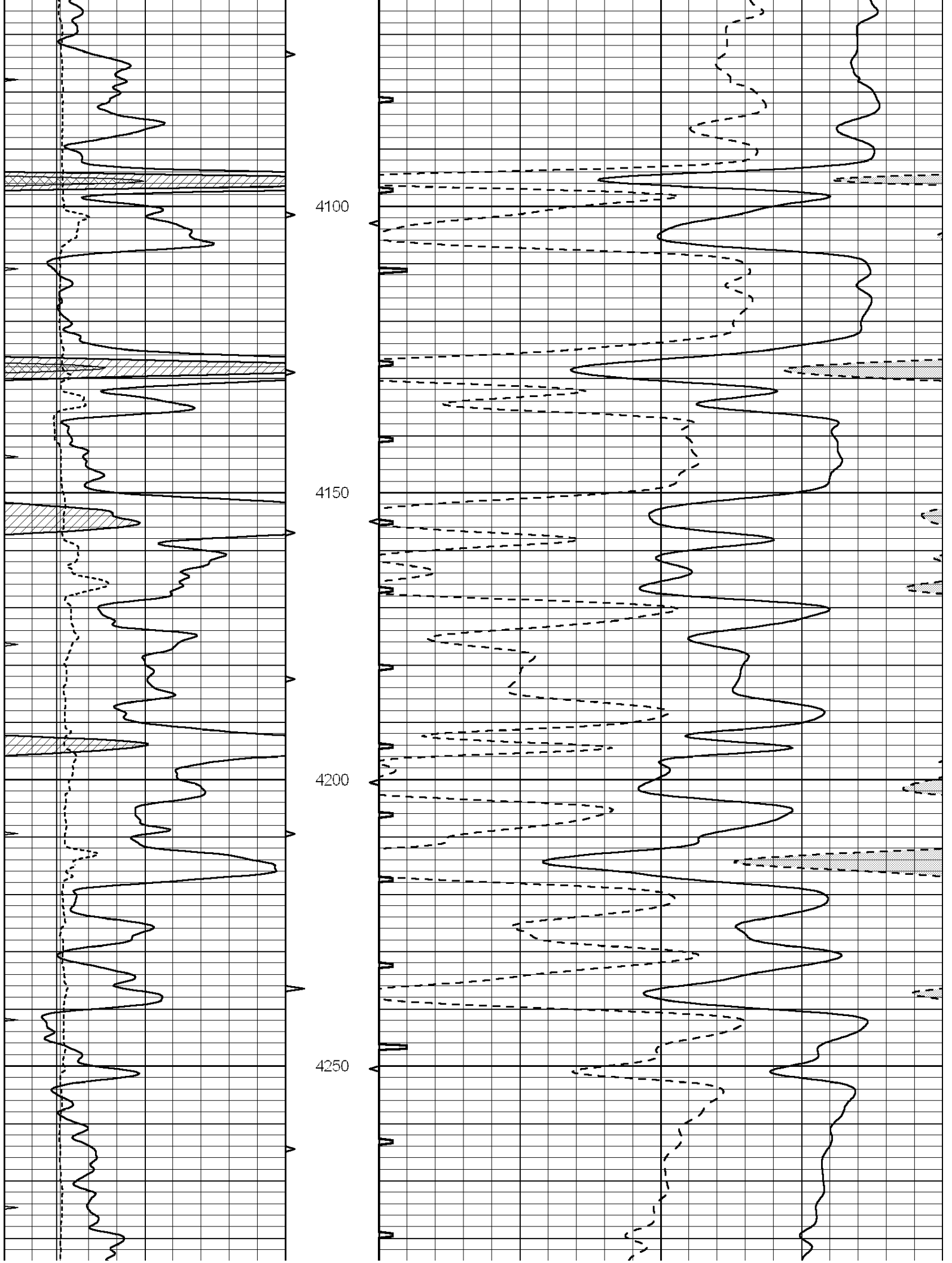
3700

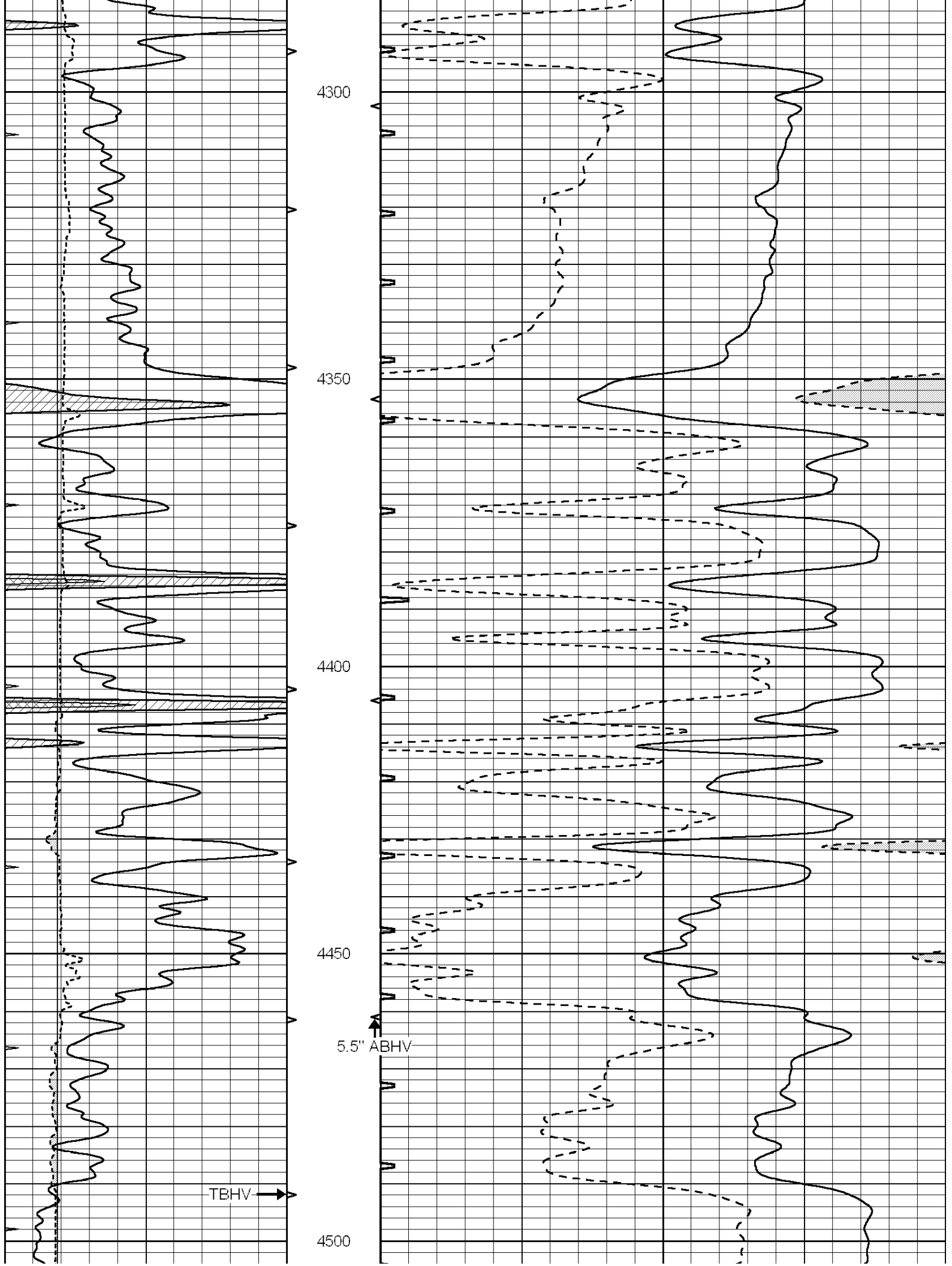
3750

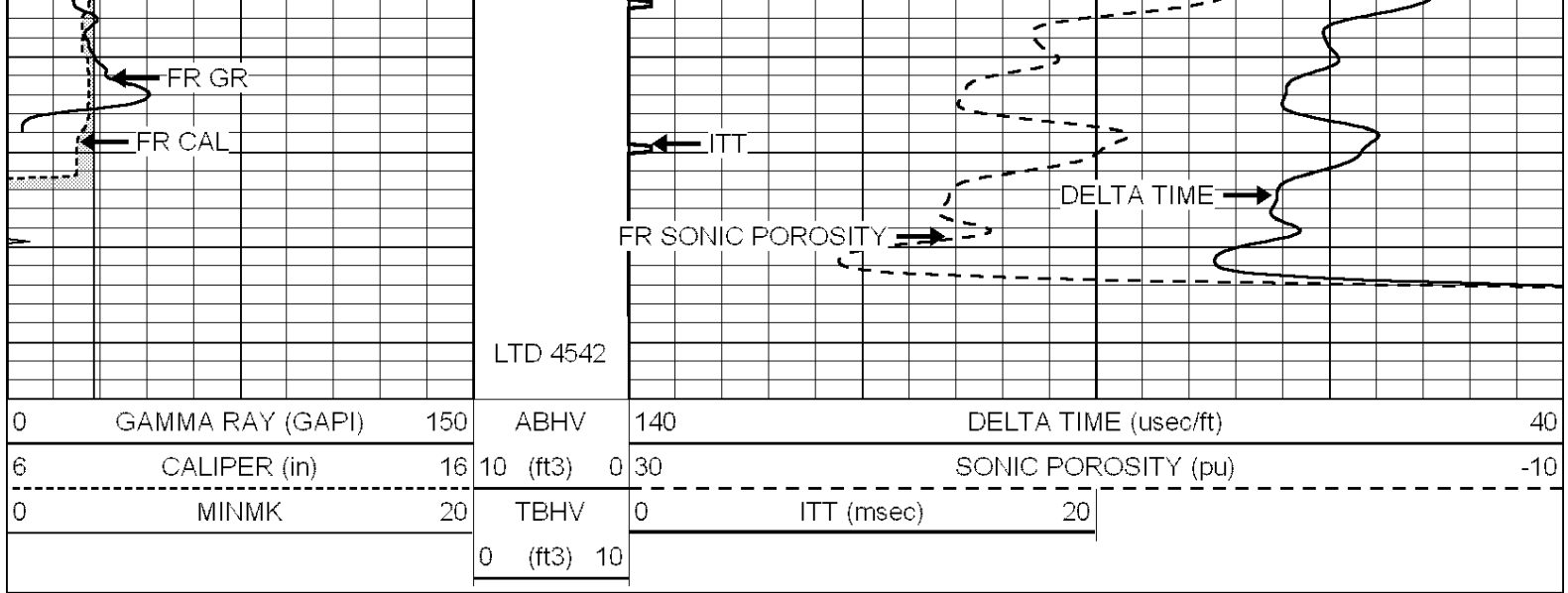
3800









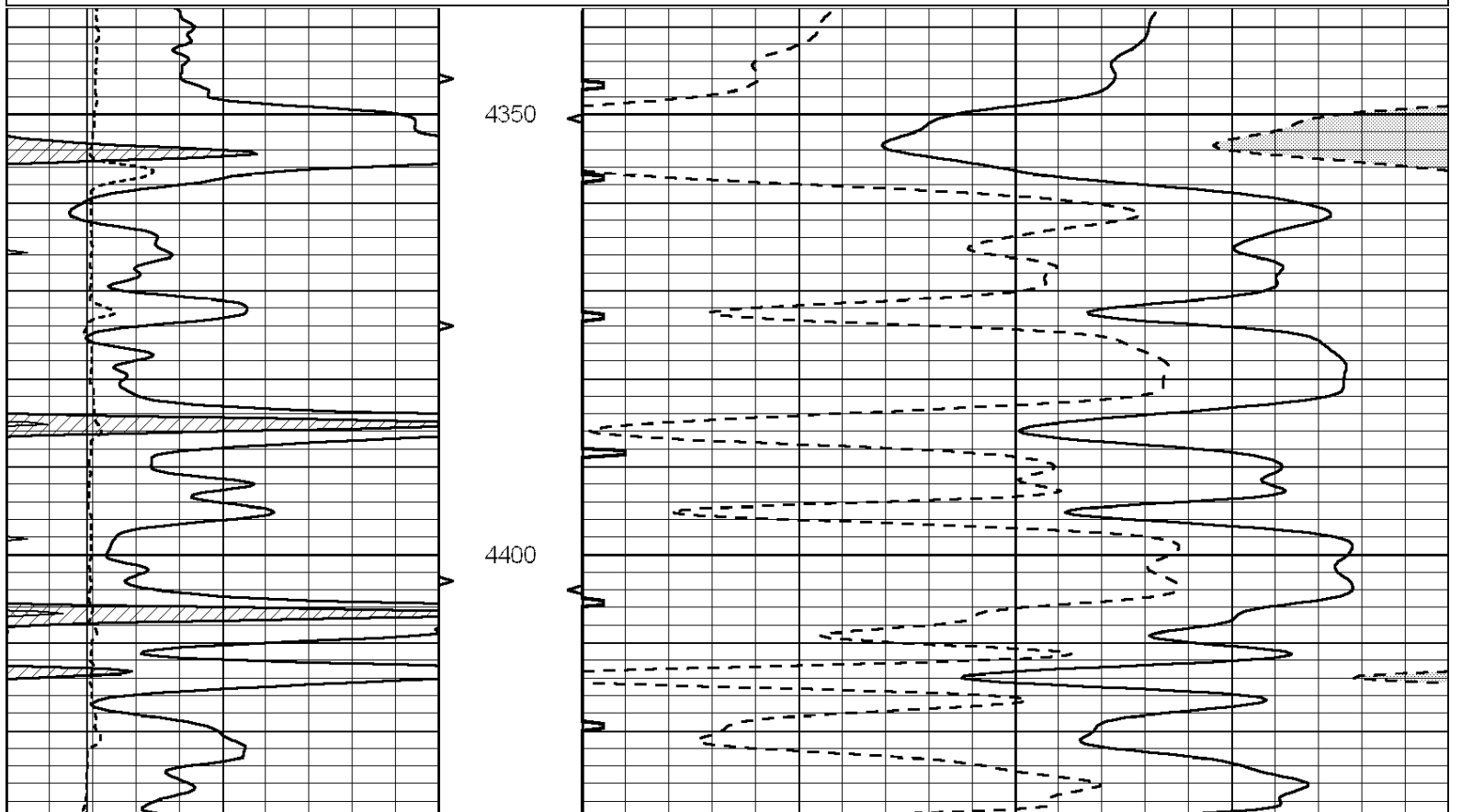


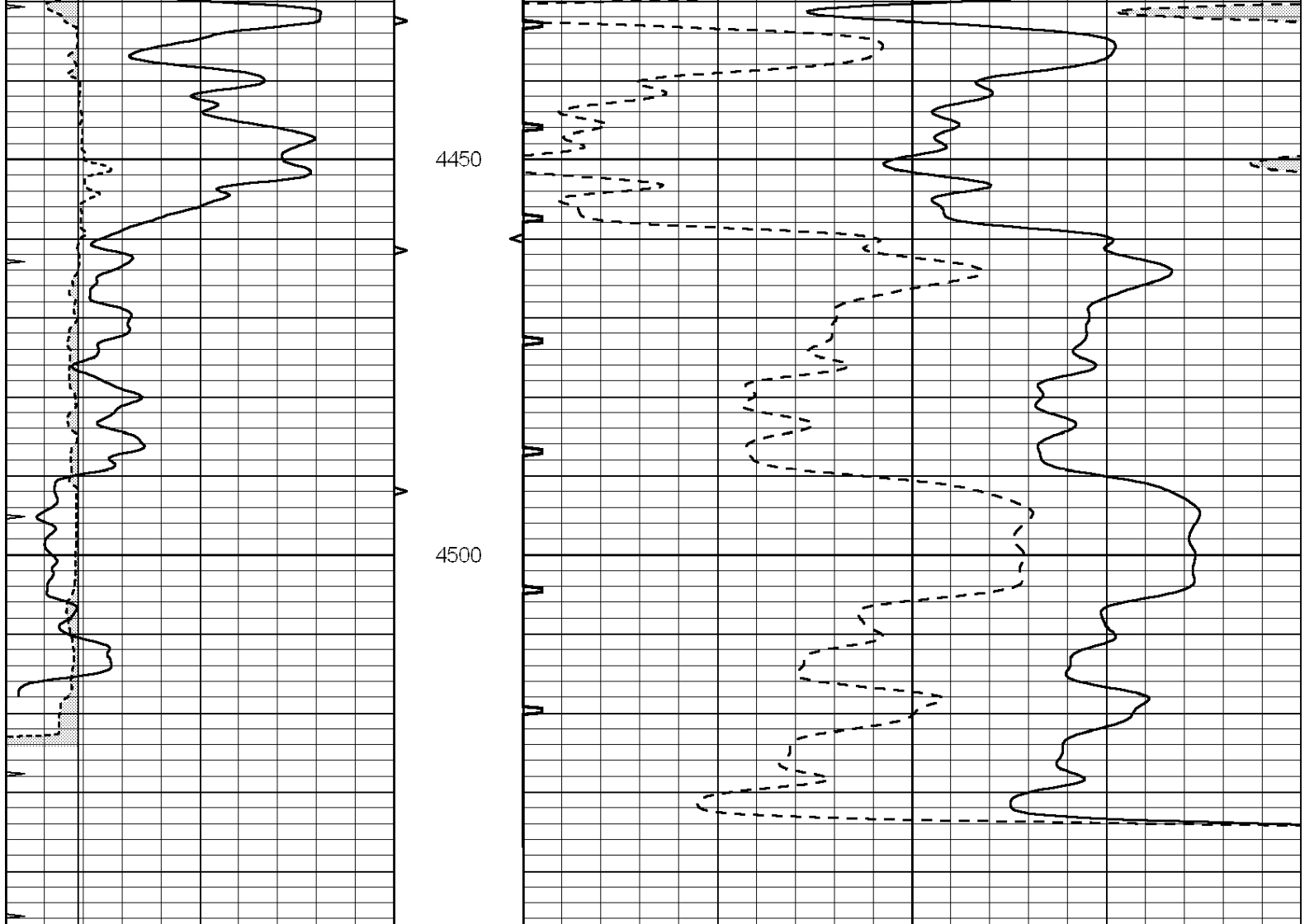
SUPERIOR  
Hays,  
Kansas

# REPEAT SECTION

Database File: 006611pe.db  
 Dataset Pathname: pass5.2  
 Presentation Format: slt  
 Dataset Creation: Sat Mar 12 00:05:28 2011  
 Charted by: Depth in Feet scaled 1:240

0	GAMMA RAY (GAPI)	150	ABHV	140	DELTA TIME (usec/ft)	40
6	CALIPER (in)	16	10 (ft3)	0 30	SONIC POROSITY (pu)	-10
0	MINMK	20	TBHV	0	ITT (msec)	20
			0 (ft3)	10		





0	GAMMA RAY (GAPI)	150	ABHV	140	DELTA TIME (usec/ft)	40	
6	CALIPER (in)	16	10 (ft3)	0	30	SONIC POROSITY (pu)	-10
0	MINMK	20	TBHV	0	ITT (msec)	20	
			0 (ft3)	10			