



SUPERIOR
Hays,
Kansas

MICRO
LOG

Company	BAIRD OIL COMPANY, LLC	Location:	API # : 15-137-20559-0000	Other Services
Well	SIDES #1-3			
Field	SIDES #1-3			
County	NORTON			
State	KANSAS			
Permanent Datum	GROUND LEVEL	Elevation	2213	Elevation
Log Measured From	KELLY BUSHING 5' A.G.L.			K.B. 2218
Drilling Measured From	KELLY BUSHING			D.F. 2216
				G.L. 2213

Date	5/11/11
Run Number	TWO
Depth Driller	3750
Depth Logger	3753
Bottom Logged Interval	3751
Top Log Interval	3100
Casing Driller	8 5/8" @ 220'
Casing Logger	220
Bit Size	7 7/8
Type Fluid in Hole	CHEMICAL MUD
Density / Viscosity	9.2/50
pH / Fluid Loss	11.0/6.4
Source of Sample	FLOWLINE
Rim @ Meas. Temp	.95 @ 88F
Rmf @ Meas. Temp	.71 @ 88F
Rmc @ Meas. Temp	1.14 @ 88F
Source of Rmf / Rmc	MEASURED
Rim @ BHT	.73 @ 114F
Time Circulation Stopped	2 HOURS
Time Logger on Bottom	
Maximum Recorded Temperature	114F
Equipment Number	680
Location	HAYS, KS.
Recorded By	JASON CAPPELLUCCI
Witnessed By	RICHARD BELL

<<< Fold Here >>>

All interpretations are opinions based on inferences from electrical or other measurements and we cannot and do not guarantee the accuracy or correctness of any interpretation, and we shall not, except in the case of gross or willful negligence on our part, be liable or responsible for any loss, costs, damages, or expenses incurred or sustained by anyone resulting from any interpretation made by any of our officers, agents or employees. These interpretations are also subject to our general terms and conditions set out in our current Price Schedule.

Comments

THANK YOU FOR USING SUPERIOR WELL SERVICE (785) 628-6395
 DIRECTIONS
 LOGAN, KS - WEST TO RD 12 E - 5 1/2 MILES NORTH
 WEST INTO

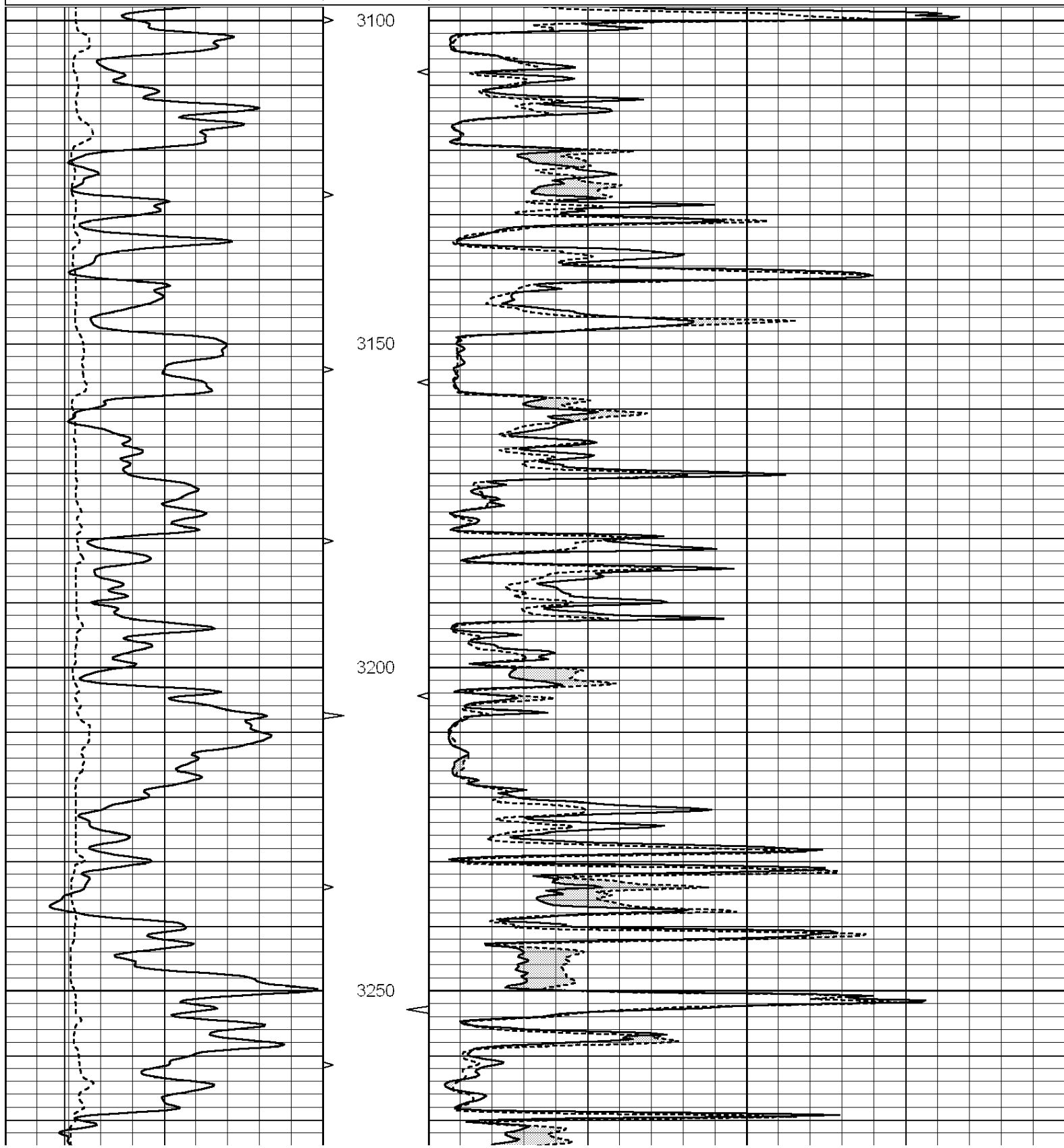


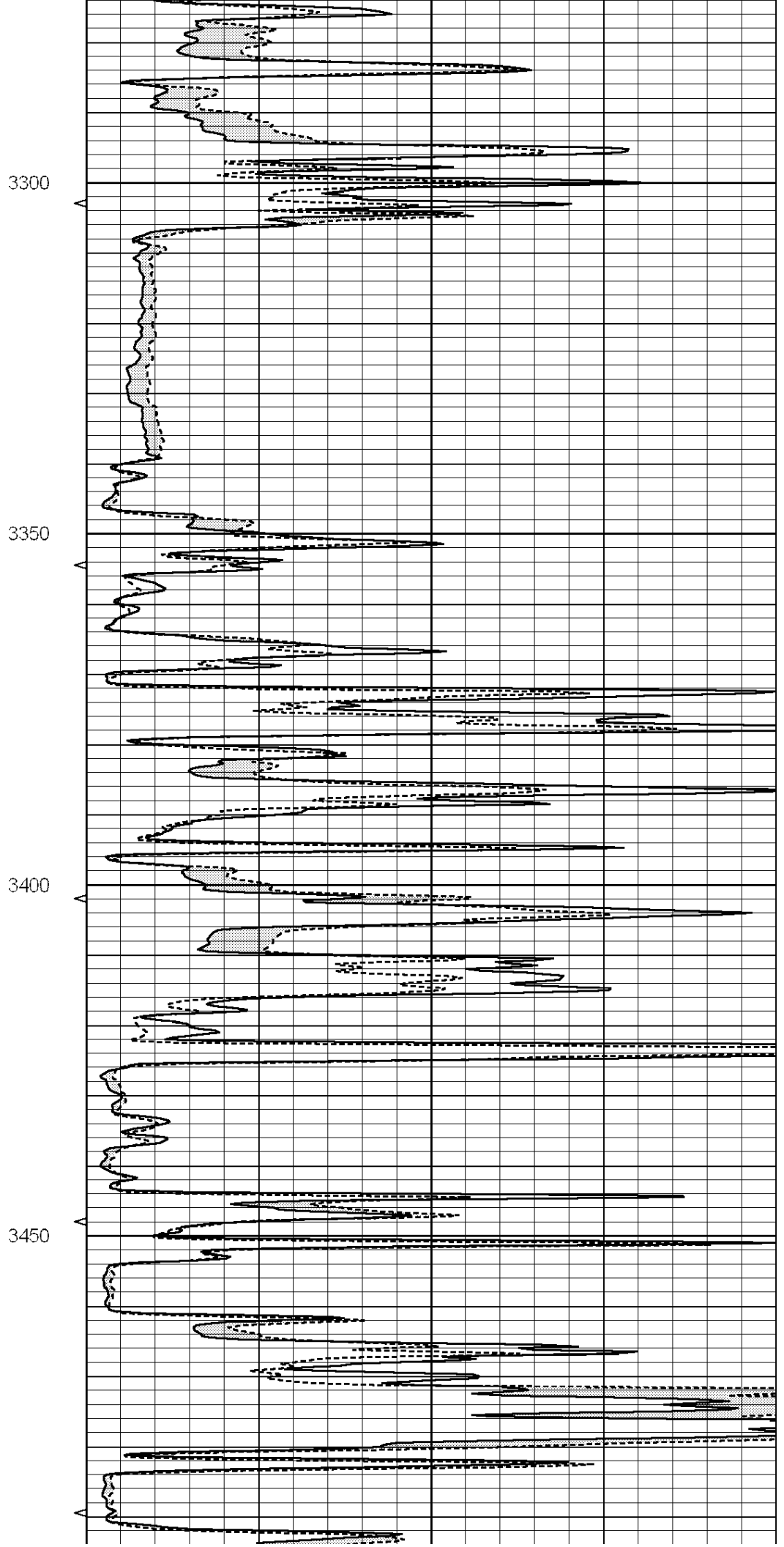
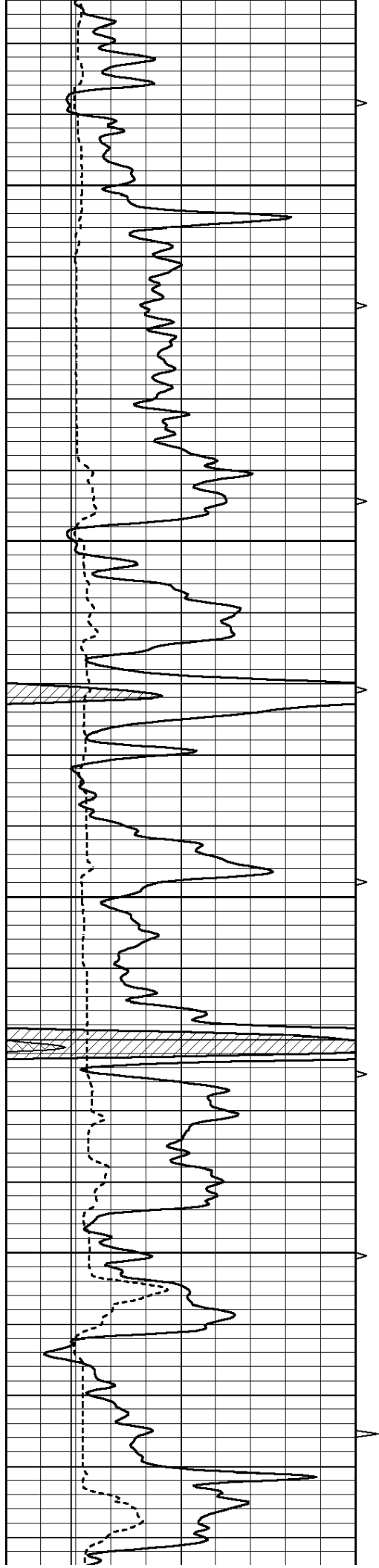
SUPERIOR
Hays,
Kansas

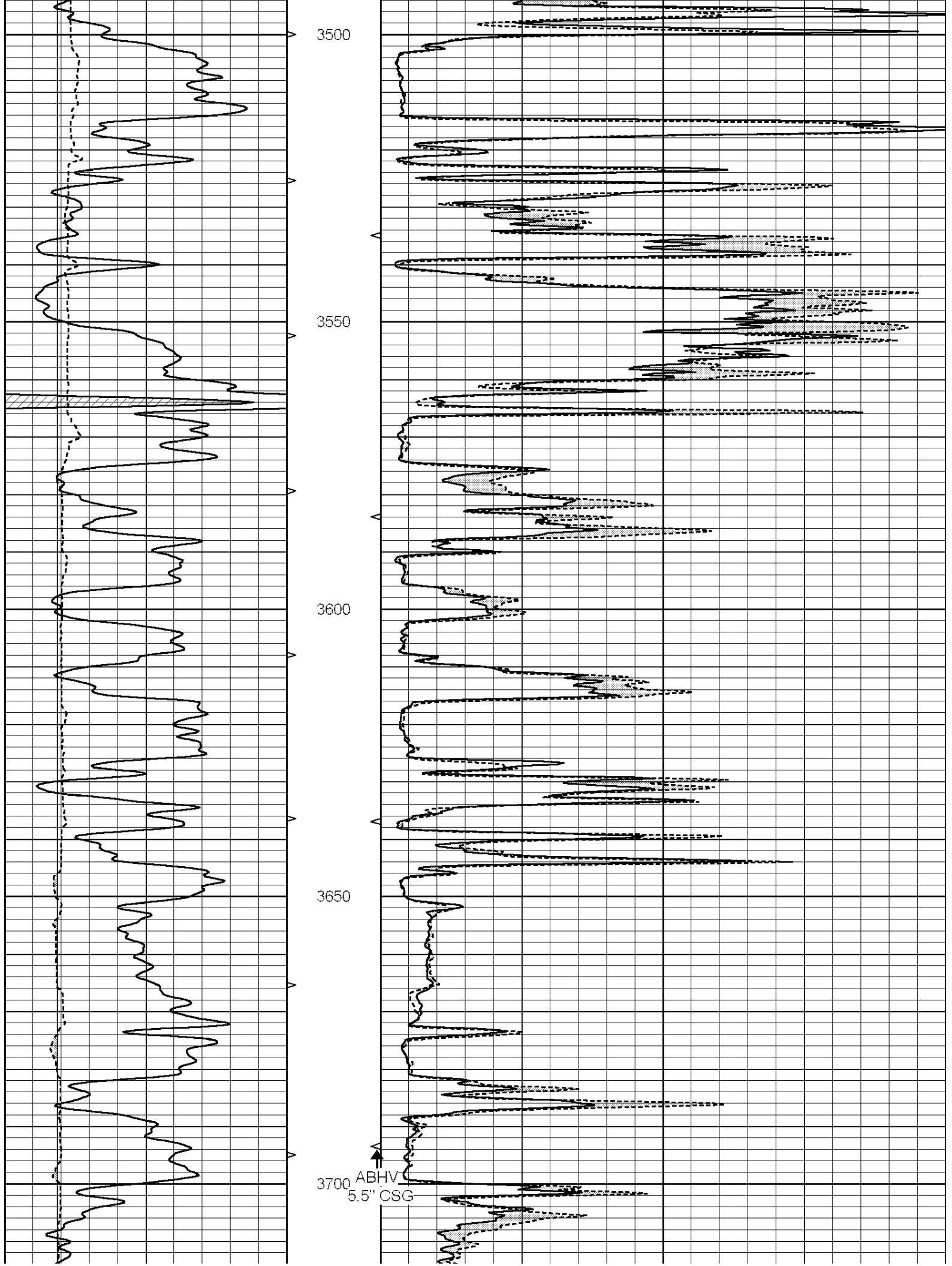
MAIN SECTION

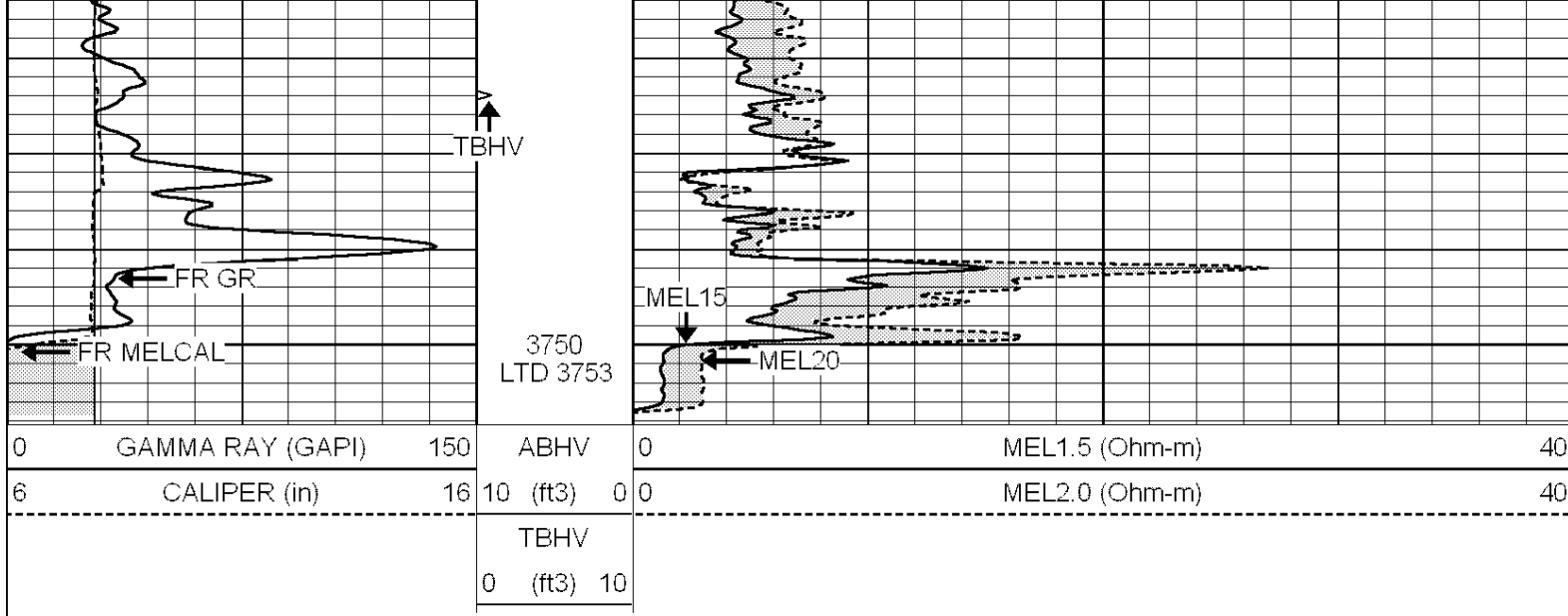
Database File: 007059rag.db
 Dataset Pathname: pass8.1
 Presentation Format: _micro
 Dataset Creation: Wed May 11 10:33:48 2011 by Calc Open-Cased 090629
 Charted by: Depth in Feet scaled 1:240

0	GAMMA RAY (GAPI)	150	ABHV	0	MEL1.5 (Ohm-m)	40
6	CALIPER (in)	16	10 (ft3)	0	MEL2.0 (Ohm-m)	40
			TBHV			
			0 (ft3)	10		







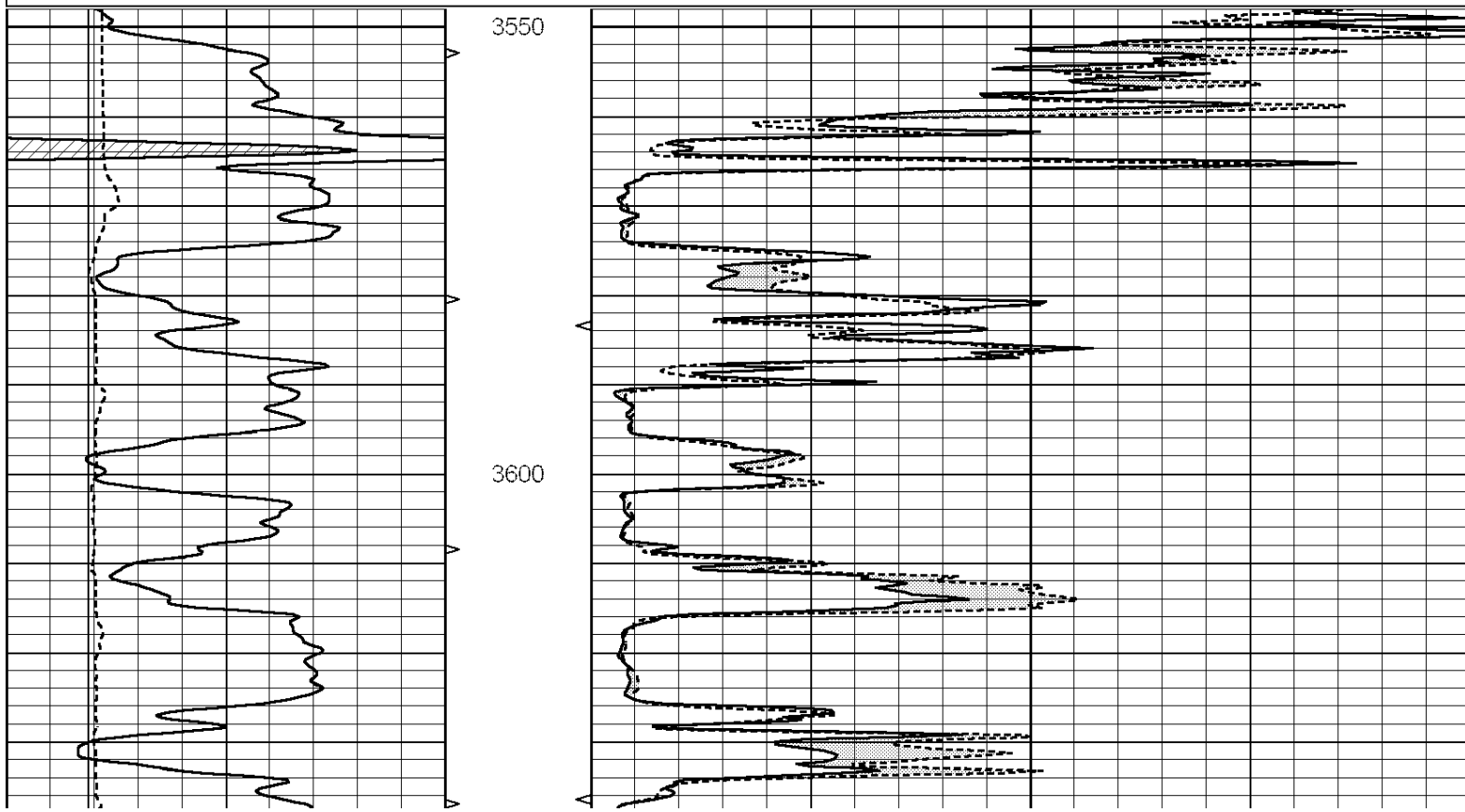


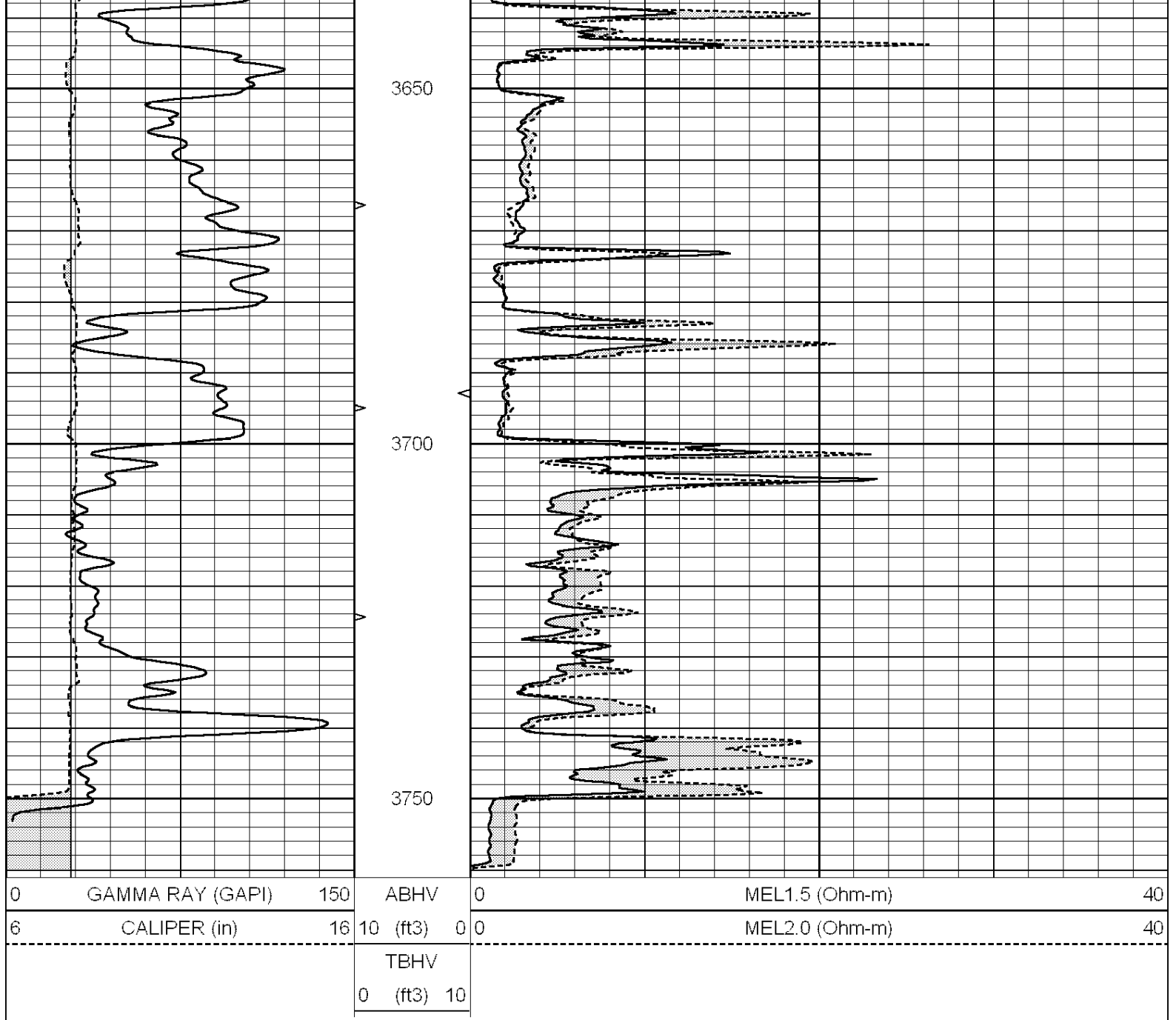
SUPERIOR
Hays,
Kansas

REPEAT SECTION

Database File: 007059rag.db
 Dataset Pathname: pass7.1
 Presentation Format: _micro
 Dataset Creation: Wed May 11 10:23:09 2011 by Calc Open-Cased 090629
 Charted by: Depth in Feet scaled 1:240

0	GAMMA RAY (GAPI)	150	ABHV	0	MEL1.5 (Ohm-m)	40
6	CALIPER (in)	16	10 (ft3)	0	MEL2.0 (Ohm-m)	40
			TBHV			
			0 (ft3)	10		





Calibration Report

Database File: 007059rag.db
 Dataset Pathname: pass7.1
 Dataset Creation: Wed May 11 10:23:09 2011 by Calc Open-Cased 090629

MICRO Calibration Report

Serial Number: MICRO3
 Tool Model: PROBE
 Performed: Thu Mar 31 11:28:13 2011

Caliper Calibration: Gain=3.916 Offset=-8.871

	Low Cal	High Cal
References	8.000	14.000
Readings	4.257	5.789

1.5" Calibration: Gain=89.104 Offset=-0.337

	Low Cal	High Cal
References	0.000	20.000
Readings	0.004	0.228

2" Calibration:

Gain=107.553

Offset=-0.620

References

Low Cal

High Cal

Readings

0.000

20.000

0.005

0.175

Gamma Ray Calibration Report

Serial Number:

#8

Tool Model:

OPEN

Performed:

Sun Apr 10 22:50:36 2011

Calibrator Value:

150.0

GAPI

Background Reading:

0.0

cps

Calibrator Reading:

175.0

cps

Sensitivity:

0.8971

GAPI/cps