



SUPERIOR
Hays,
Kansas

**RADIATION
GUARD
LOG**

Company BAIRD OIL COMPANY, LLC.
Well SIDES #1-3
Field
County NORTON
State KANSAS

Company BAIRD OIL COMPANY, LLC
Well SIDES #1-3
Field
County NORTON State KANSAS

Location: 2105' FNL & 2540' FWL API # : 15-137-20559-0000

SEC 3 TWP 4S RGE 21W

MEL

Permanent Datum	GROUND LEVEL	Elevation	2213
Log Measured From	KELLY BUSHING 5' A.G.L.		
Drilling Measured From	KELLY BUSHING		
		Elevation	K.B. 2218 D.F. 2216 G.L. 2213

Date	5/11/11
Run Number	ONE
Depth Driller	3750
Depth Logger	3753
Bottom Logged Interval	3751
Top Log Interval	3100
Casing Driller	8 5/8" @ 220'
Casing Logger	220
Bit Size	7 7/8
Type Fluid in Hole	CHEMICAL MUD
Density / Viscosity	9.2/50
pH / Fluid Loss	11.0/6.4
Source of Sample	FLOWLINE
Rim @ Meas. Temp	.95 @ 88F
Rmf @ Meas. Temp	.71 @ 88F
Rmc @ Meas. Temp	1.14 @ 88F
Source of Rmf / Rmc	MEASURED
Rim @ BHT	.73 @ 114F
Time Circulation Stopped	2 HOURS
Time Logger on Bottom	
Maximum Recorded Temperature	114F
Equipment Number	680
Location	HAYS, KS.
Recorded By	JASON CAPPELLUCCI
Witnessed By	RICHARD BELL

<<< Fold Here >>>

All interpretations are opinions based on inferences from electrical or other measurements and we cannot and do not guarantee the accuracy or correctness of any interpretation, and we shall not, except in the case of gross or willful negligence on our part, be liable or responsible for any loss, costs, damages, or expenses incurred or sustained by anyone resulting from any interpretation made by any of our officers, agents or employees. These interpretations are also subject to our general terms and conditions set out in our current Price Schedule.

Comments

THANK YOU FOR USING SUPERIOR WELL SERVICE (785) 628-6395
DIRECTIONS
LOGAN, KS - WEST TO RD 12 E - 5 1/2 MILES NORTH
WEST INTO

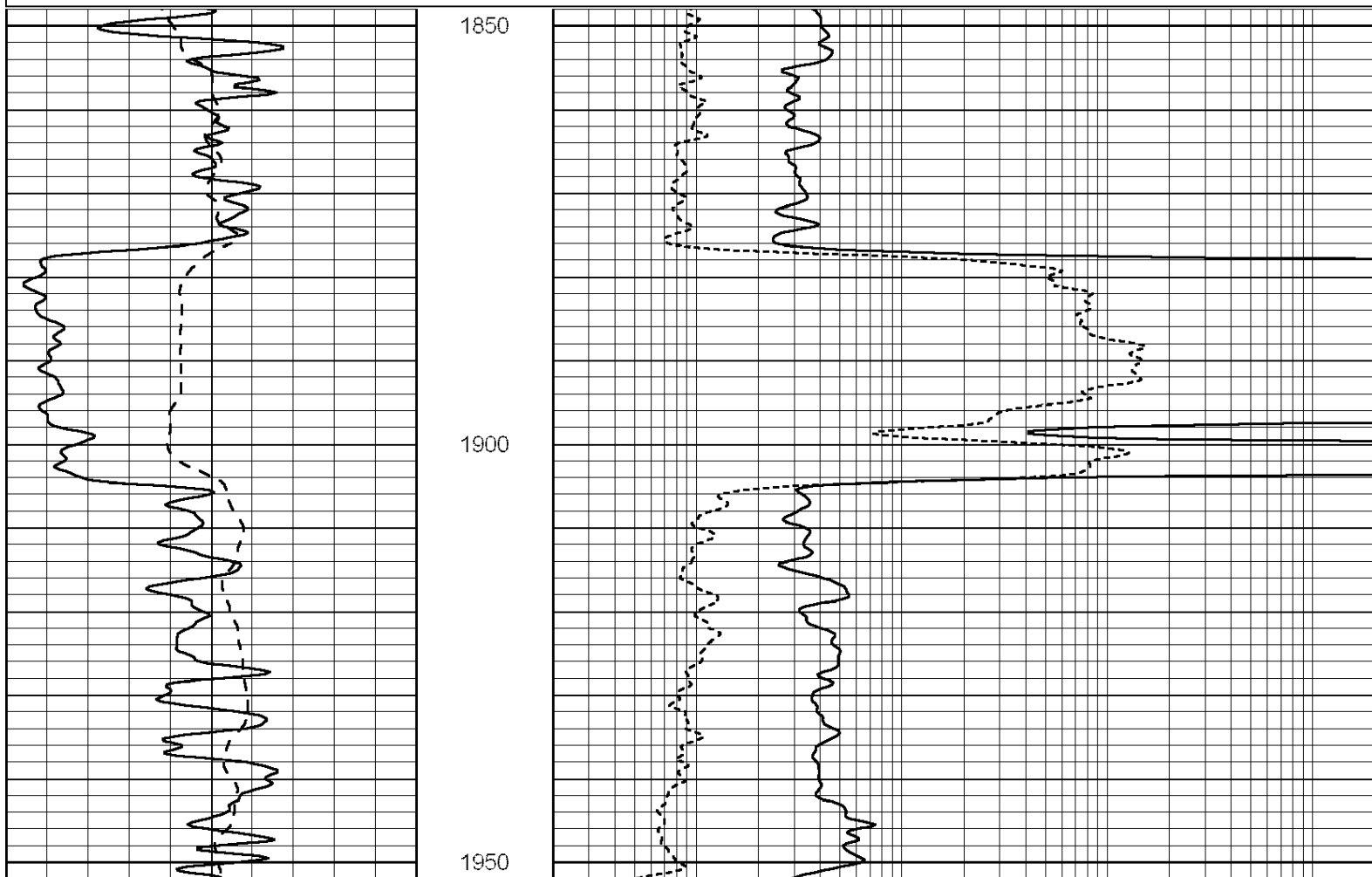


SUPERIOR
Hays,
Kansas

ANHYDRITE

Database File: 007059rag.db
 Dataset Pathname: pass3.3
 Presentation Format: rag2
 Dataset Creation: Wed May 11 08:48:27 2011 by Calc Open-Cased 090629
 Charted by: Depth in Feet scaled 1:240

0	GAMMA RAY (GAPI)	150	ABHV (ft3)	0.2	GUARD (Ohm-m)	2000
-100	SP (mV)	100		0	NEUTRON (NAPI)	1000
-----			TBHV (ft3)	-----		



0	GAMMA RAY (GAPI)	150	ABHV (ft3)	0.2	GUARD (Ohm-m)	2000
-100	SP (mV)	100		0	NEUTRON (NAPI)	1000
-----			TBHV (ft3)	-----		



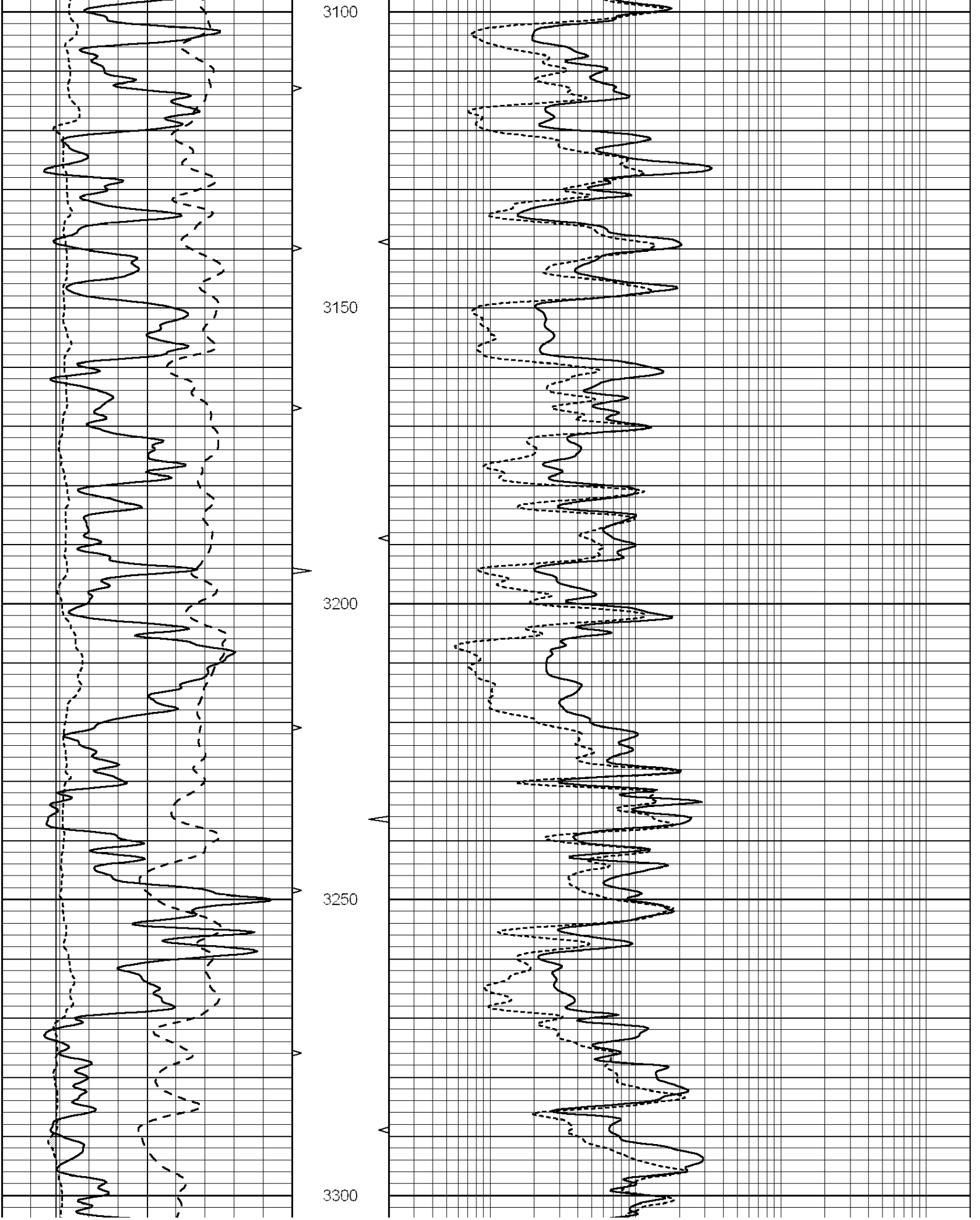
SUPERIOR
 Hays,
 Kansas

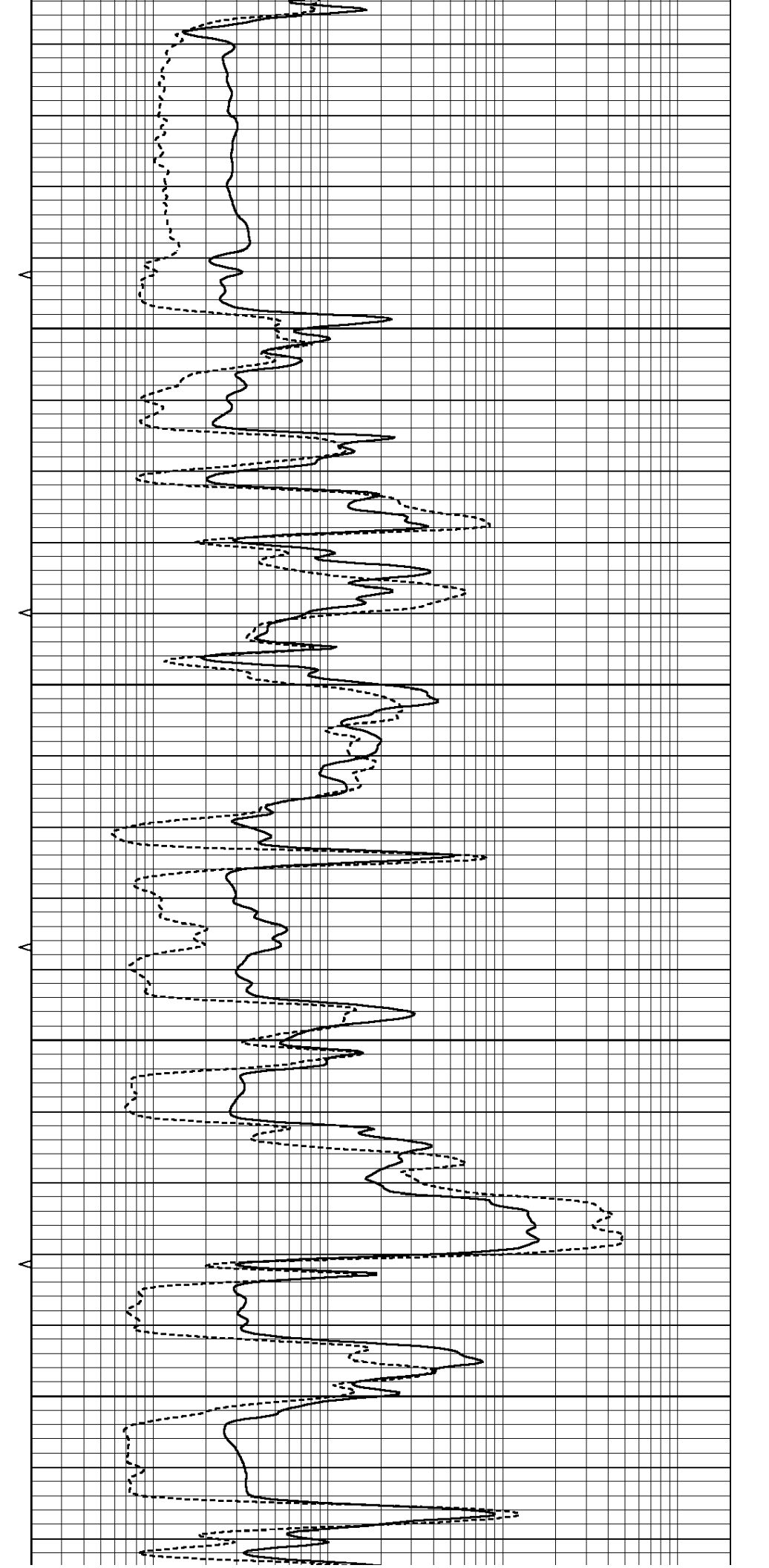
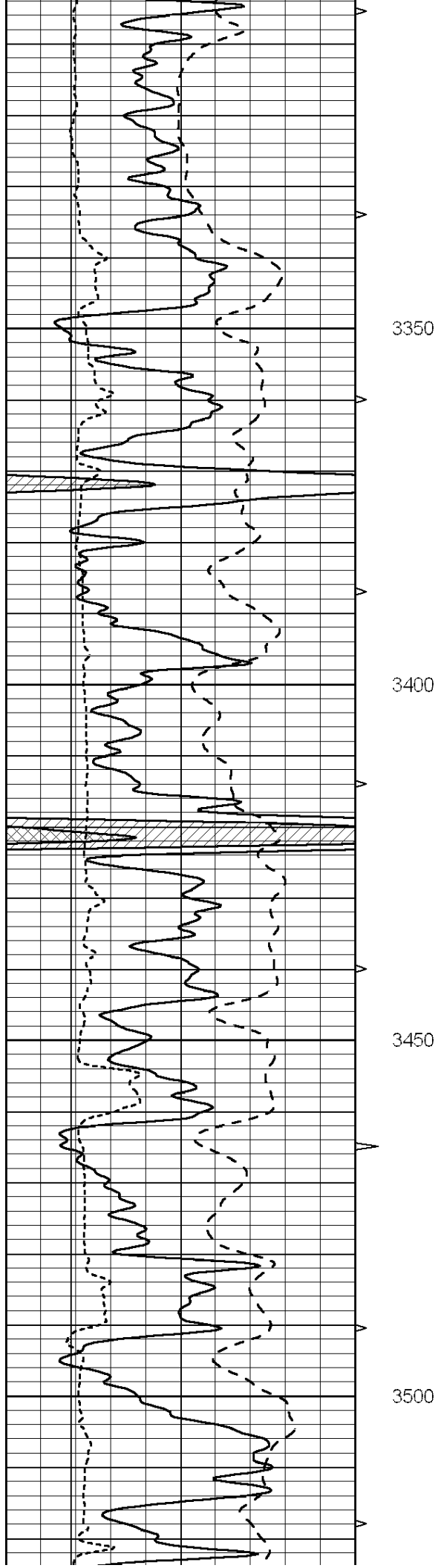
MAIN SECTION

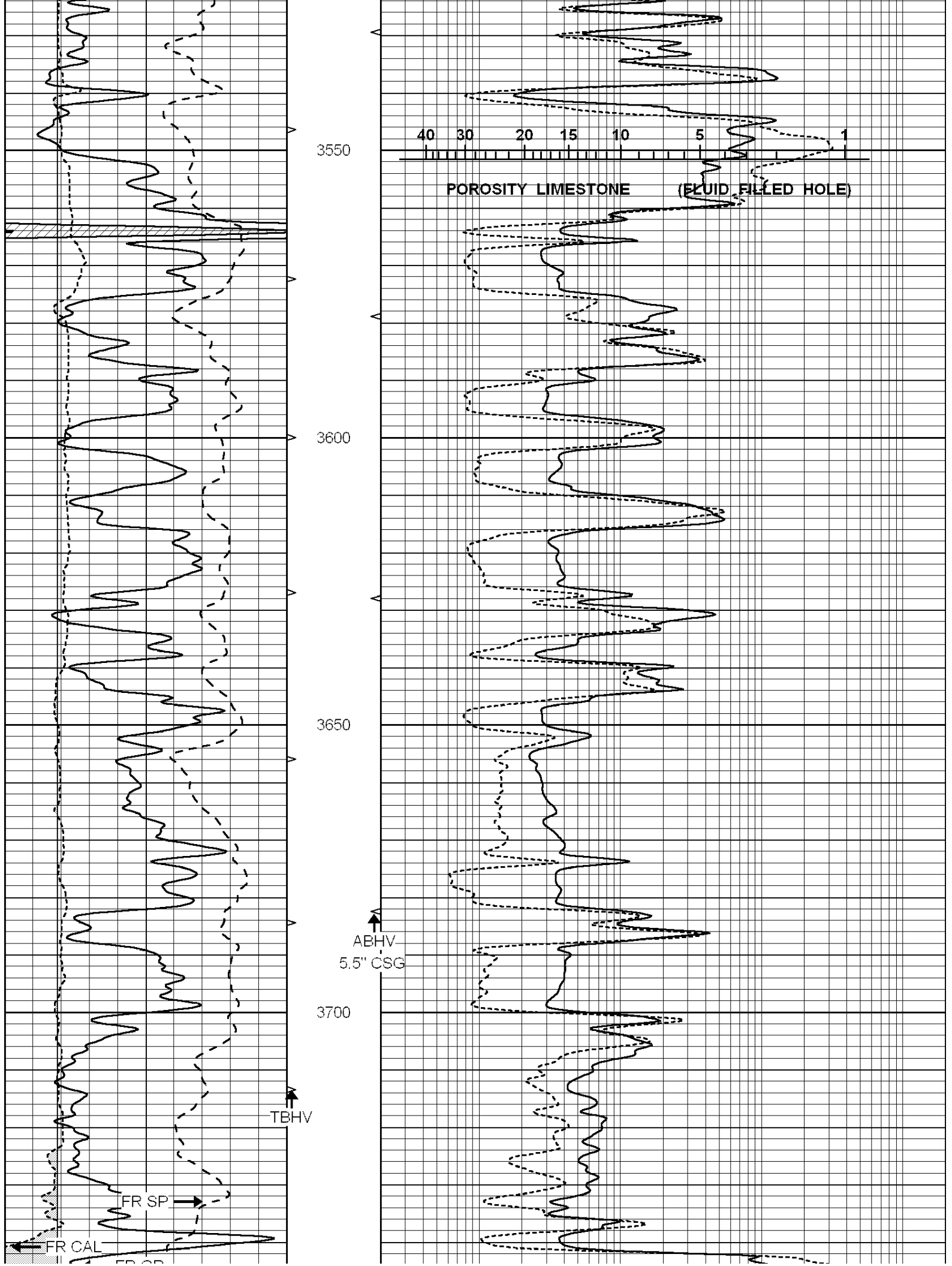
Database File: 007059rag.db
 Dataset Pathname: pass3.2
 Presentation Format: rag
 Dataset Creation: Wed May 11 08:35:18 2011 by Calc Open-Cased 090629
 Charted by: Depth in Feet scaled 1:240

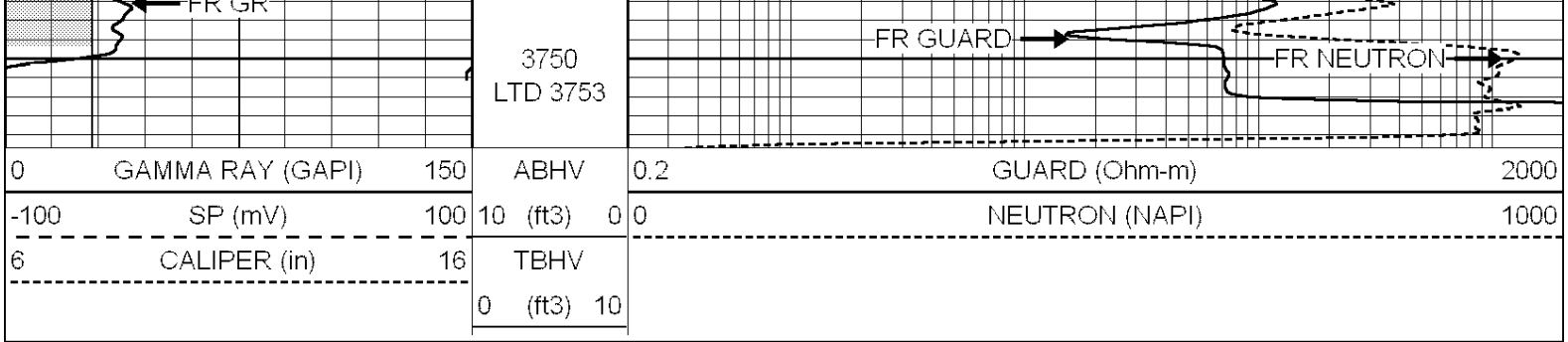
0	GAMMA RAY (GAPI)	150	ABHV	0.2	GUARD (Ohm-m)	2000
-100	SP (mV)	100		0	NEUTRON (NAPI)	1000
-----				-----		

-100	SP (mv)	100	10 (ft3)	0 0	NEUTRON (NAPI)	1000
6	CALIPER (in)	16	TBHV			
			0 (ft3)	10		









SUPERIOR
Hays,
Kansas

REPEAT SECTION

Database File: 007059rag.db
 Dataset Pathname: pass2.1
 Presentation Format: rag
 Dataset Creation: Wed May 11 08:38:16 2011 by Calc Open-Cased 090629
 Charted by: Depth in Feet scaled 1:240

