



SUPERIOR
Hays,
Kansas

**TRIPLE COMBO
LOG
(TIGHT HOLE)**

Company NEW GULF OPERATING, LLC.
Well LAURA #1
Field WILDCAT
County LOGAN
State KANSAS

Company NEW GULF OPERATING, LLC.
Well LAURA #1
Field WILDCAT
County LOGAN State KANSAS

Location: API # : 15-109-20982-0000
883' FNL & 1716' FEL
SEC 31 TWP 11S RGE 32W
Permanent Datum GROUND LEVEL Elevation 3087
Log Measured From KELLY BUSHING 8' A.G.L.
Drilling Measured From KELLY BUSHING
Other Services
CDL/CNL/PE
DIL/MEL/SON
Elevation
K.B. 3095
D.F. 3093
G.L. 3087

Date	2/25/11
Run Number	ONE
Depth Driller	4780
Depth Logger	4781
Bottom Logged Interval	4779
Top Log Interval	3600
Casing Driller	8 5/8"@265'
Casing Logger	264
Bit Size	7 7/8"
Type Fluid in Hole	CHEMICAL MUD
Density / Viscosity	9.3/55
pH / Fluid Loss	10.5/7.2
Source of Sample	FLOWLINE
Rim @ Meas. Temp	1.10@78F
Rmf @ Meas. Temp	.825@78F
Rmc @ Meas. Temp	1.32@78F
Source of Rmf / Rmc	MEASUREMENT
Rim @ BHT	.698@123F
Time Circulation Stopped	3 HOURS
Time Logger on Bottom	1:15 A.M.
Maximum Recorded Temperature	123F
Equipment Number	0836
Location	HAYS, KANSAS
Recorded By	JEFF LUEBBERS
Witnessed By	CURTIS COVERY

<<< Fold Here >>>

All interpretations are opinions based on inferences from electrical or other measurements and we cannot and do not guarantee the accuracy or correctness of any interpretation, and we shall not, except in the case of gross or willful negligence on our part, be liable or responsible for any loss, costs, damages, or expenses incurred or sustained by anyone resulting from any interpretation made by any of our officers, agents or employees. These interpretations are also subject to our general terms and conditions set out in our current Price Schedule.

Comments

THANK YOU FOR USING SUPERIOR WELL SERVICE HAYS, KANSAS (785) 628-6395
DIRECTIONS
OAKLEY, KS. (JUNTION OF OLD 40 & HWY 83) 4S.ON HWY 83 TO "APACHE ACRE RD.", 3 1/4W., S. INTO

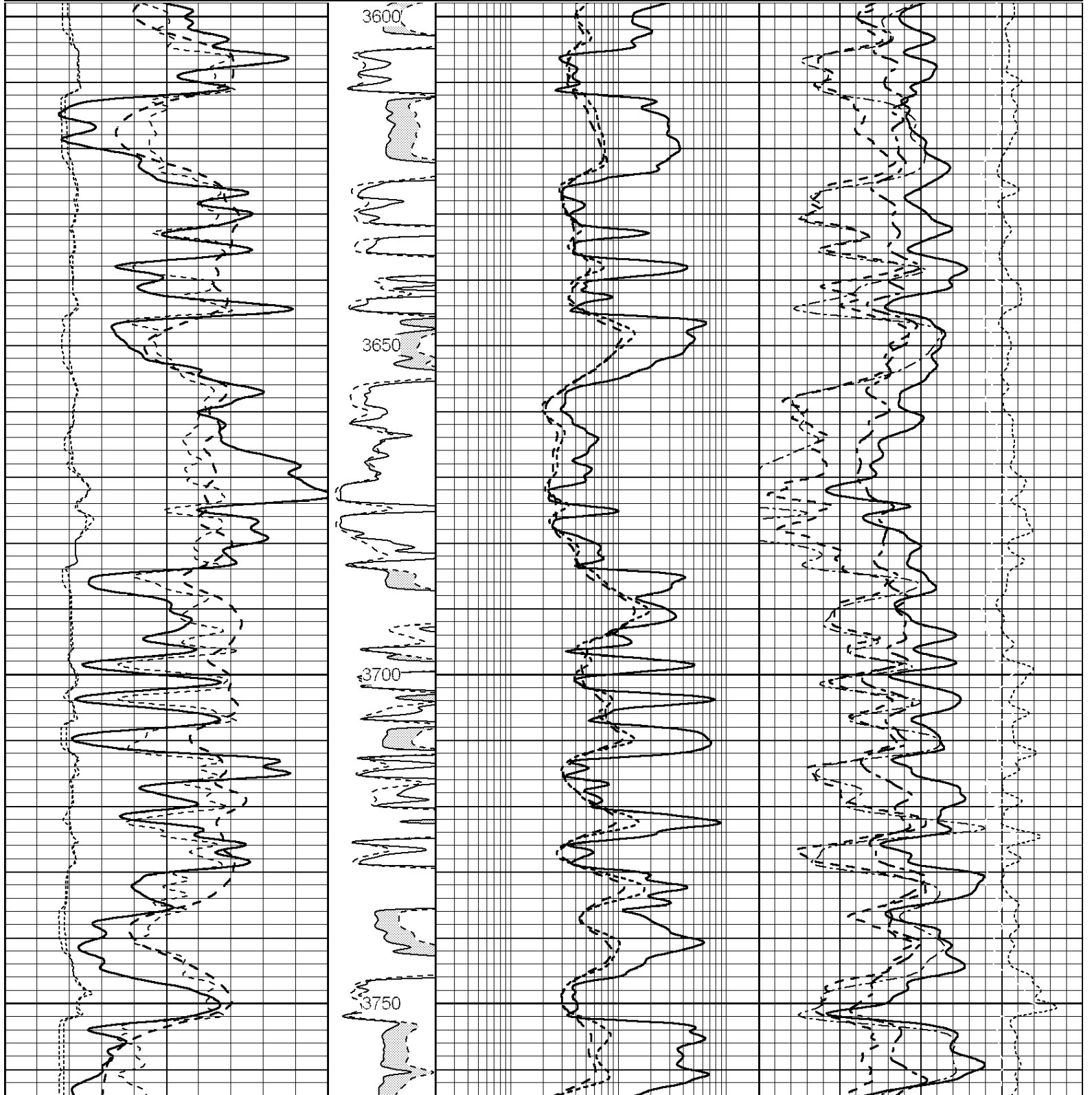


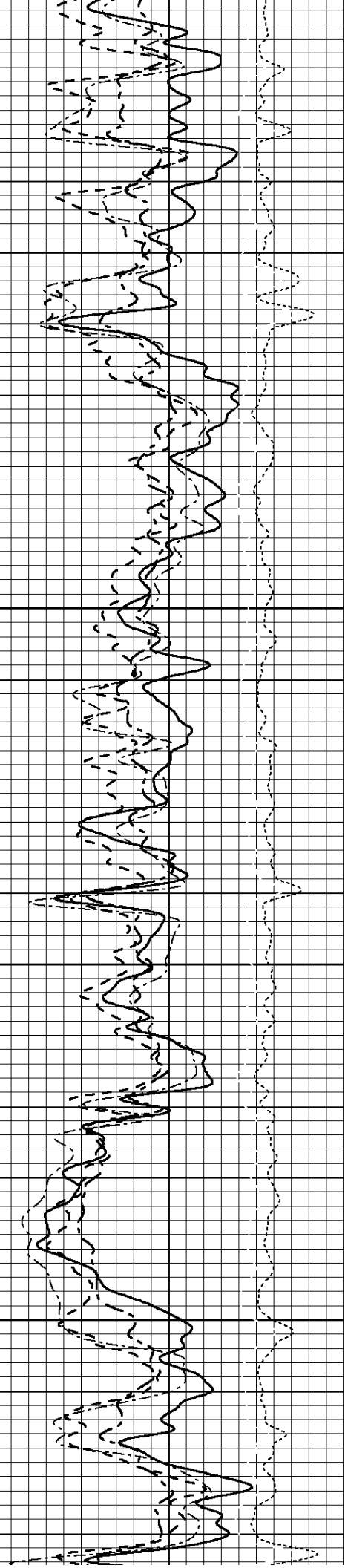
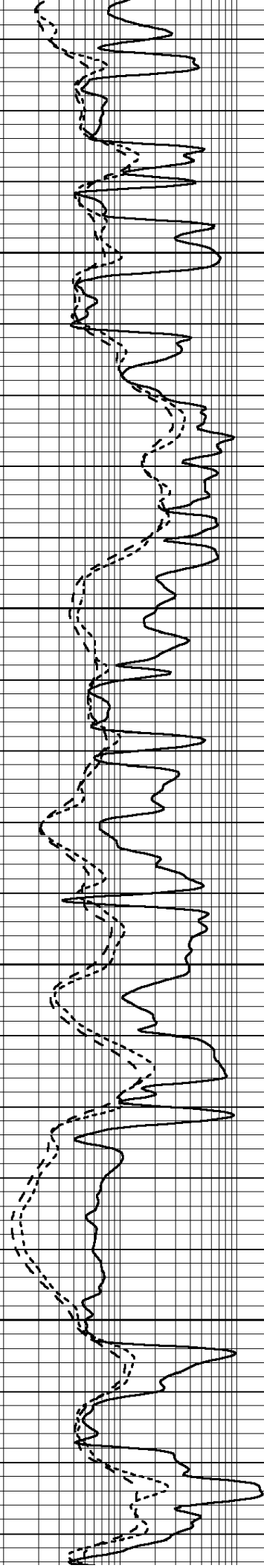
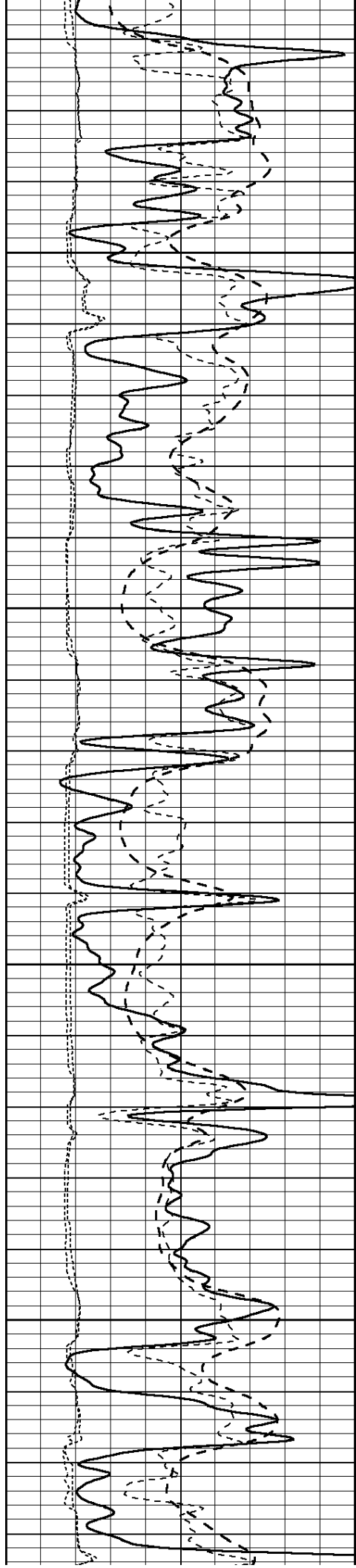
SUPERIOR
Hays,
Kansas

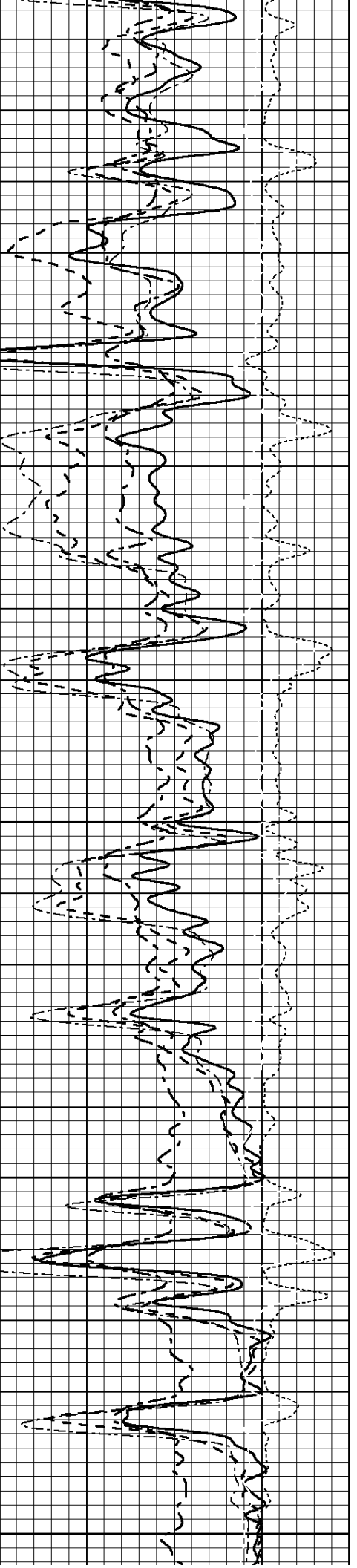
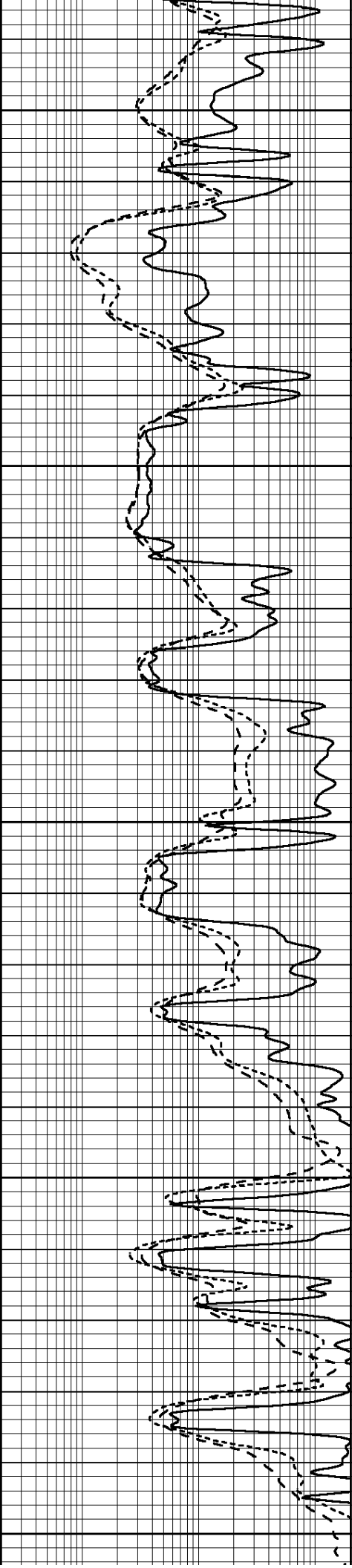
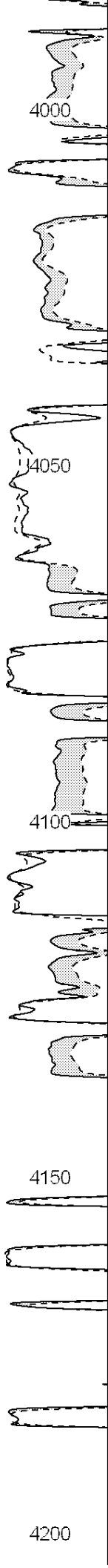
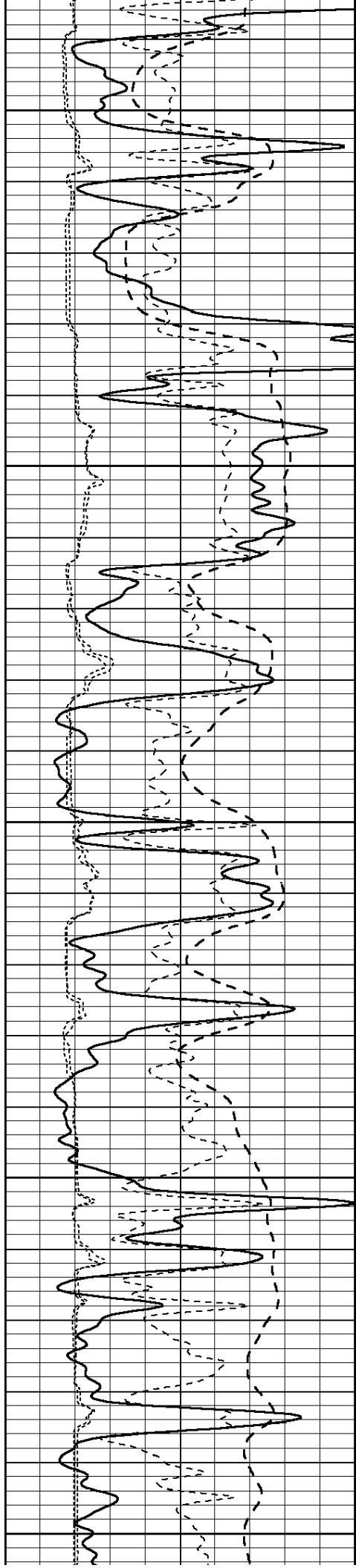
MAIN SECTION

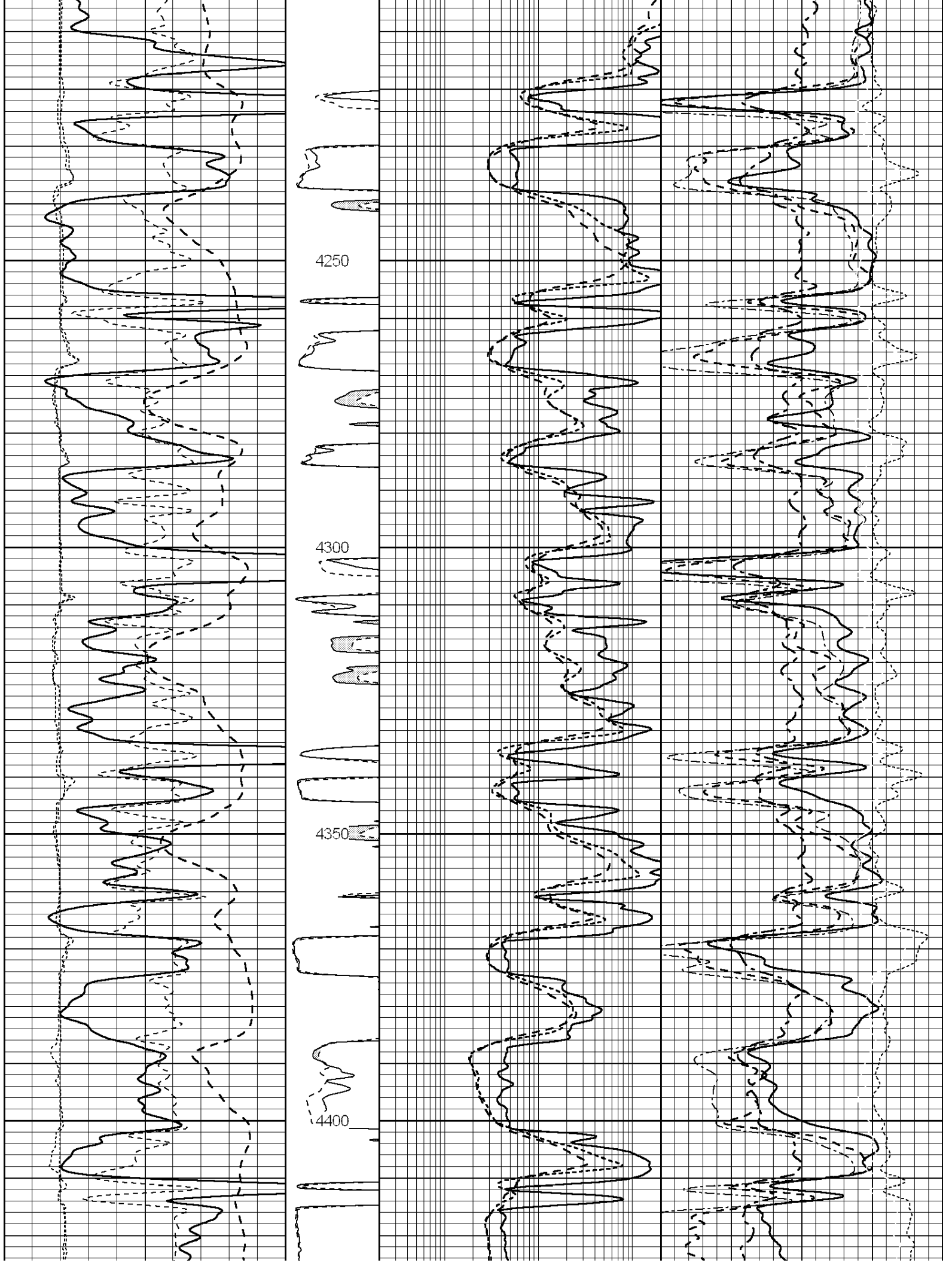
Database File: 006298pe.db
 Dataset Pathname: pass3.2L
 Presentation Format: obrcomp
 Dataset Creation: Fri Feb 25 05:51:46 2011
 Charted by: Depth in Feet scaled 1:240

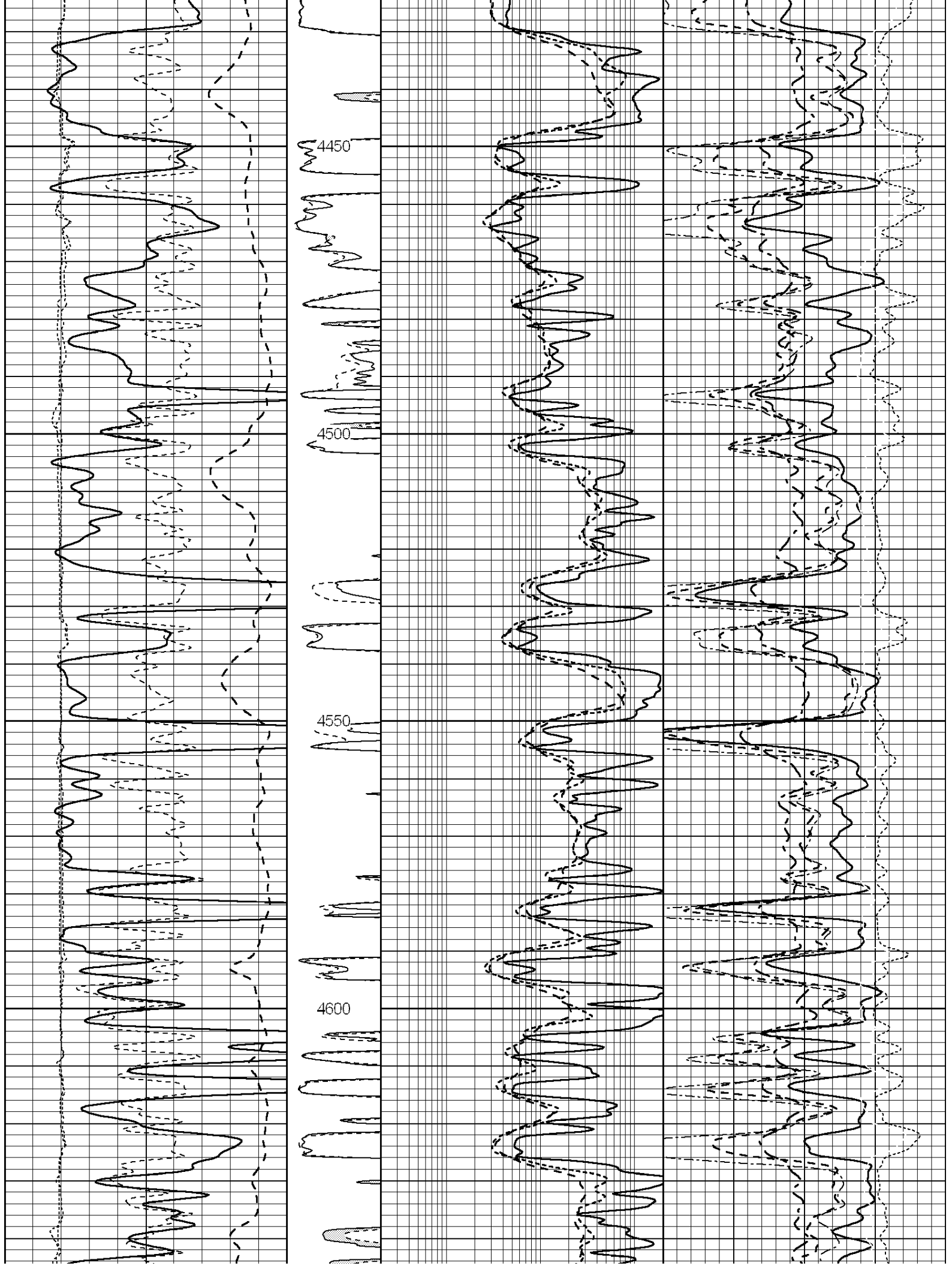
0	Gamma Ray (GAPI)	150	MEL15	0.2	Deep Resistivity (Ohm-m)	200	30	Sonic Porosity (pu)	-10
-100	SP (mV)	100	(Ohm-m)	0.2	Medium Resistivity (Ohm-m)	200	30	CN Porosity (pu)	-10
-200	RxoRt	100	0 20	0.2	Shallow Resistivity (Ohm-m)	200	30	Density Porosity (pu)	-10
6	DCAL (in)	16	MEL20				0	PE	10
6	MELCAL (in)	16	(Ohm-m)					RHOC	
			0 20					-0.25 (g/cc)	0.25

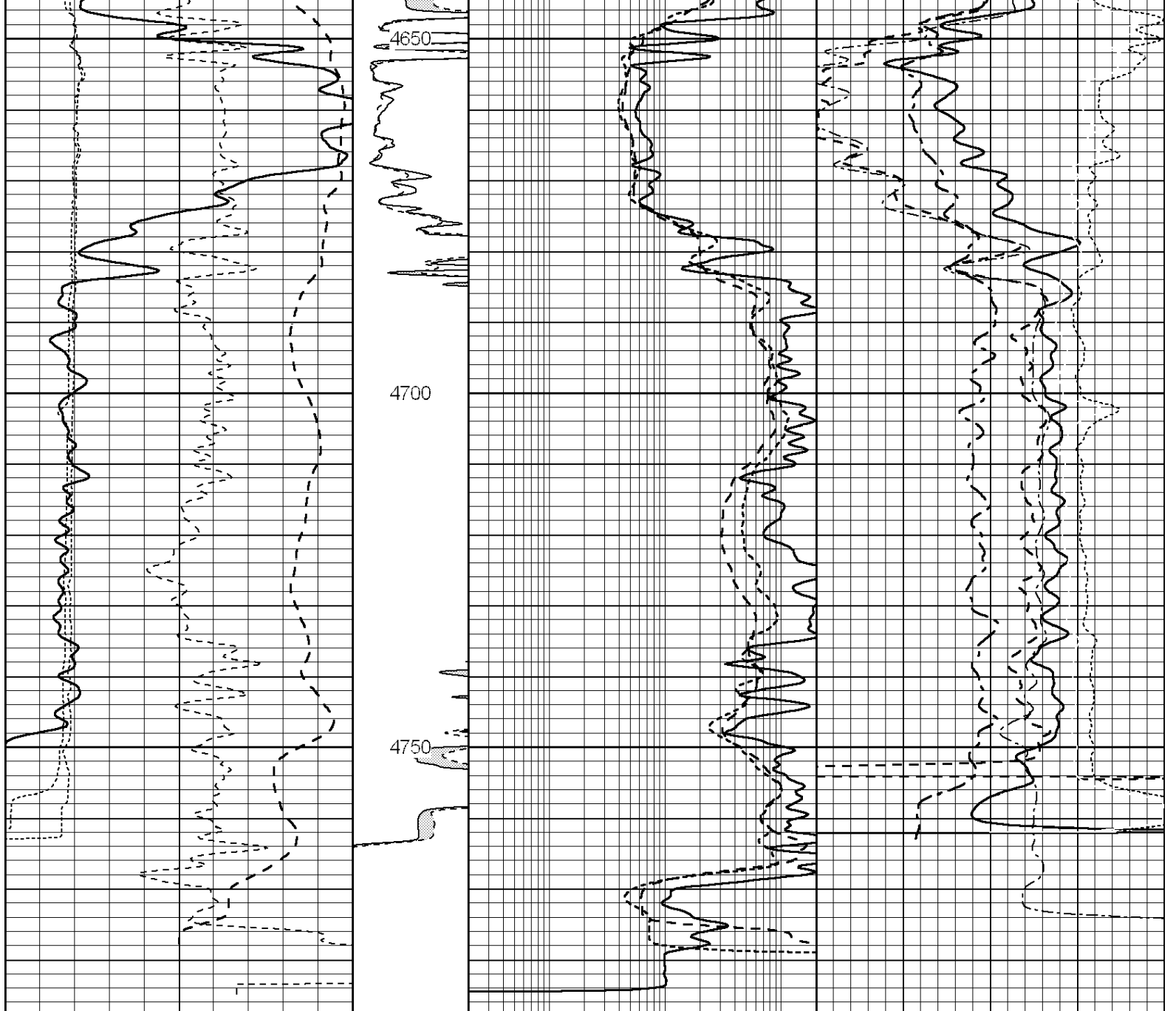












0	Gamma Ray (GAPI)	150	MEL15	0.2	Deep Resistivity (Ohm-m)	200	30	Sonic Porosity (pu)	-10	
-100	SP (mV)	100	(Ohm-m)	0.2	Medium Resistivity (Ohm-m)	200	30	CN Porosity (pu)	-10	
-200	RxoRt	100	0	20	0.2	Shallow Resistivity (Ohm-m)	200	30	Density Porosity (pu)	-10
6	DCAL (in)	16	MEL20				0	PE	10	
6	MELCAL (in)	16	(Ohm-m)						RHOC	
			0	20					-0.25 (g/cc)	0.25