



SUPERIOR
Hays,
Kansas

COMPENSATED
DENSITY / NEUTRON
PE LOG
(TIGHT HOLE)

Company NEW GULF OPERATING, LLC.
Well LAURA #1
Field WILDCAT
County LOGAN
State KANSAS

Company NEW GULF OPERATING, LLC.
Well LAURA #1
Field WILDCAT
County LOGAN State KANSAS

Location: API # : 15-109-20982-0000
883' FNL & 1716' FEL
SEC 31 TWP 11S RGE 32W
Permanent Datum GROUND LEVEL Elevation 3087
Log Measured From KELLY BUSHING 8' A.G.L.
Drilling Measured From KELLY BUSHING
Other Services
DIL/MEL
SONIIC
Elevation
K.B. 3095
D.F. 3093
G.L. 3087

Date	2/25/11		
Run Number	ONE		
Depth Driller	4780		
Depth Logger	4781		
Bottom Logged Interval	4757		
Top Log Interval	3600		
Casing Driller	8 5/8" @ 265'		
Casing Logger	264		
Bit Size	7 7/8"		
Type Fluid in Hole	CHEMICAL MUD	CHLORIDES 3,500 PPM	
Density / Viscosity	9.3/55		
pH / Fluid Loss	10.5/7.2		
Source of Sample	FLOWLINE		
Rim @ Meas. Temp	1.10 @ 78F		
Rmf @ Meas. Temp	.825 @ 78F		
Rmc @ Meas. Temp	1.32 @ 78F		
Source of Rmf / Rmc	MEASUREMENT		
Rim @ BHT	.698 @ 123F		
Time Circulation Stopped	3 HOURS		
Time Logger on Bottom	1:15 A.M.		
Maximum Recorded Temperature	123F		
Equipment Number	0836		
Location	HAYS, KANSAS		
Recorded By	JEFF LUEBBERS		
Witnessed By	CURTIS COVERY		

<<< Fold Here >>>

All interpretations are opinions based on inferences from electrical or other measurements and we cannot and do not guarantee the accuracy or correctness of any interpretation, and we shall not, except in the case of gross or willful negligence on our part, be liable or responsible for any loss, costs, damages, or expenses incurred or sustained by anyone resulting from any interpretation made by any of our officers, agents or employees. These interpretations are also subject to our general terms and conditions set out in our current Price Schedule.

Comments

THANK YOU FOR USING SUPERIOR WELL SERVICE HAYS, KANSAS (785) 628-6395
DIRECTIONS
OAKLEY, KS. (JUNTION OF OLD 40 & HWY 83) 4S.ON HWY 83 TO "APACHE ACRE RD.", 3 1/4W., S. INTO

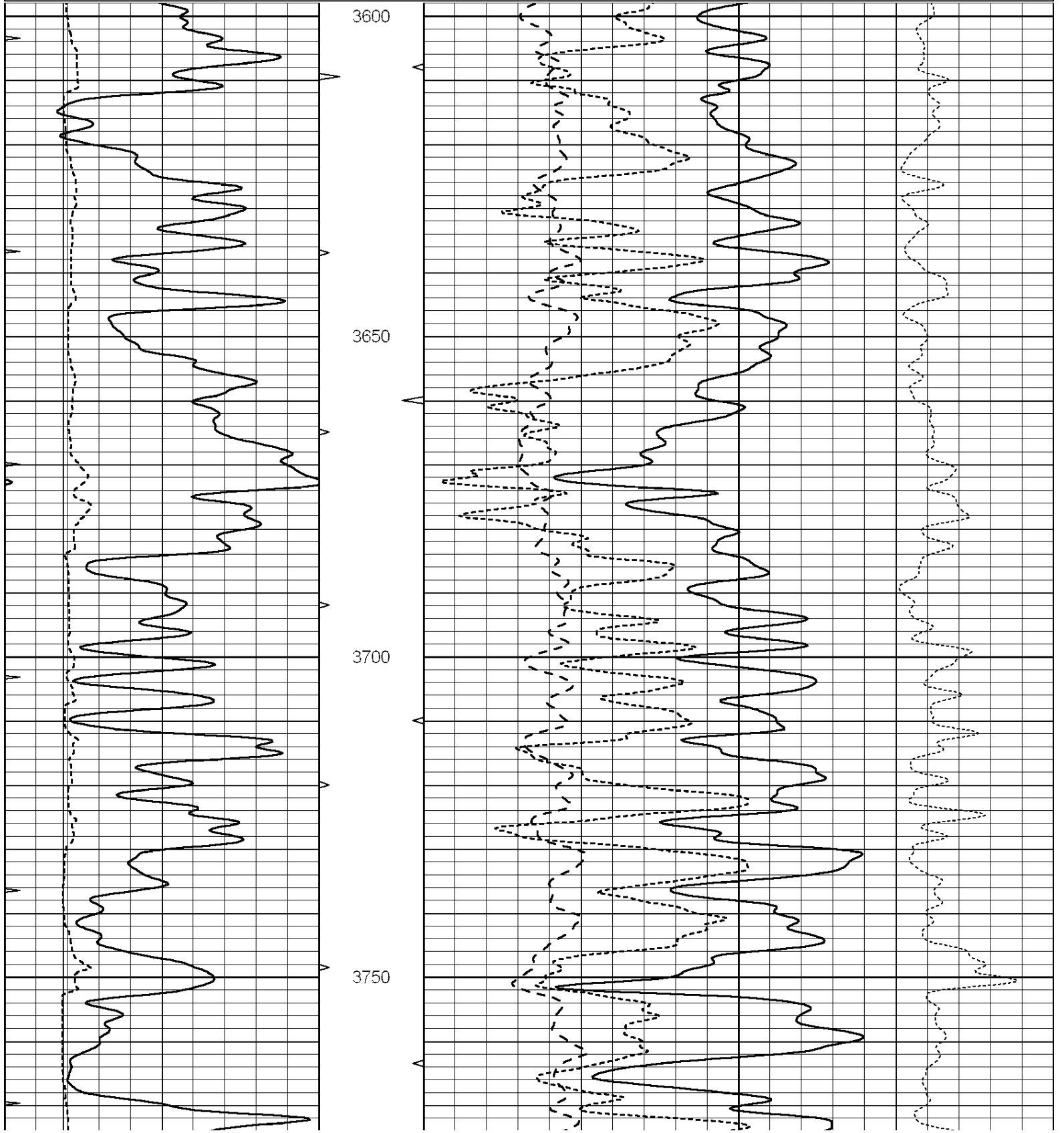


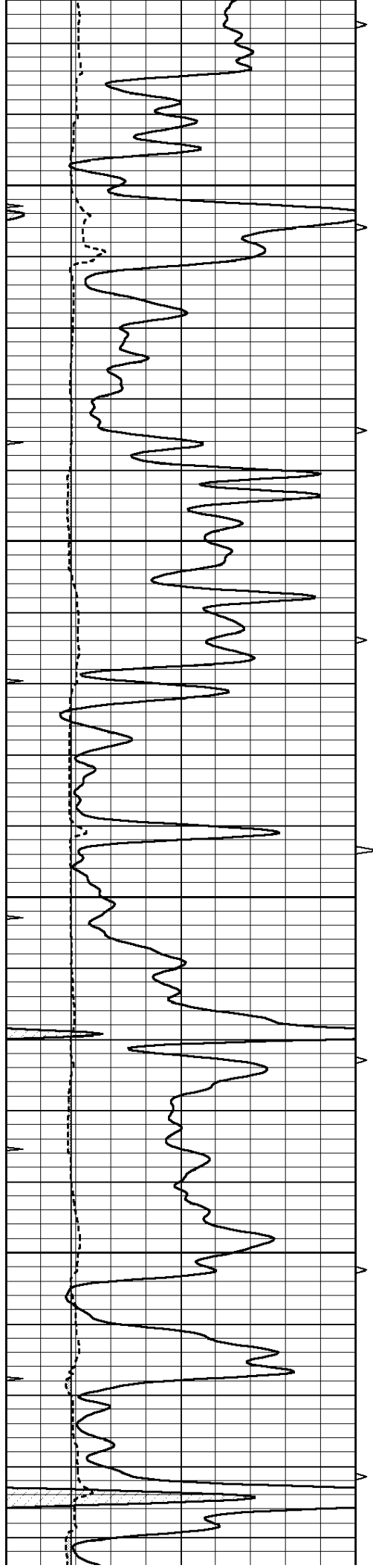
SUPERIOR
Hays,
Kansas

MAIN SECTION

Database File: 006298pe.db
 Dataset Pathname: pass3.1
 Presentation Format: ldt_neu
 Dataset Creation: Fri Feb 25 02:17:14 2011 by Calc Open-Cased 090629
 Charted by: Depth in Feet scaled 1:240

0	GAMMA RAY (GAPI)	150	ABHV	30	COMPENSATED DENSITY (pu)		-10
6	CALIPER (in)	16	10 (ft3)	0	COMPENSATED NEUTRON (pu)		-10
0	MINMK	20	TBHV	0	PE	10	-0.25 CORRECTION (g/cc) 0.25
			0 (ft3)	10			



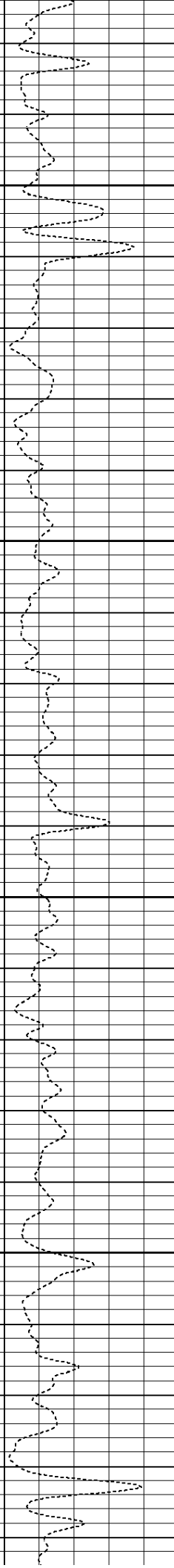
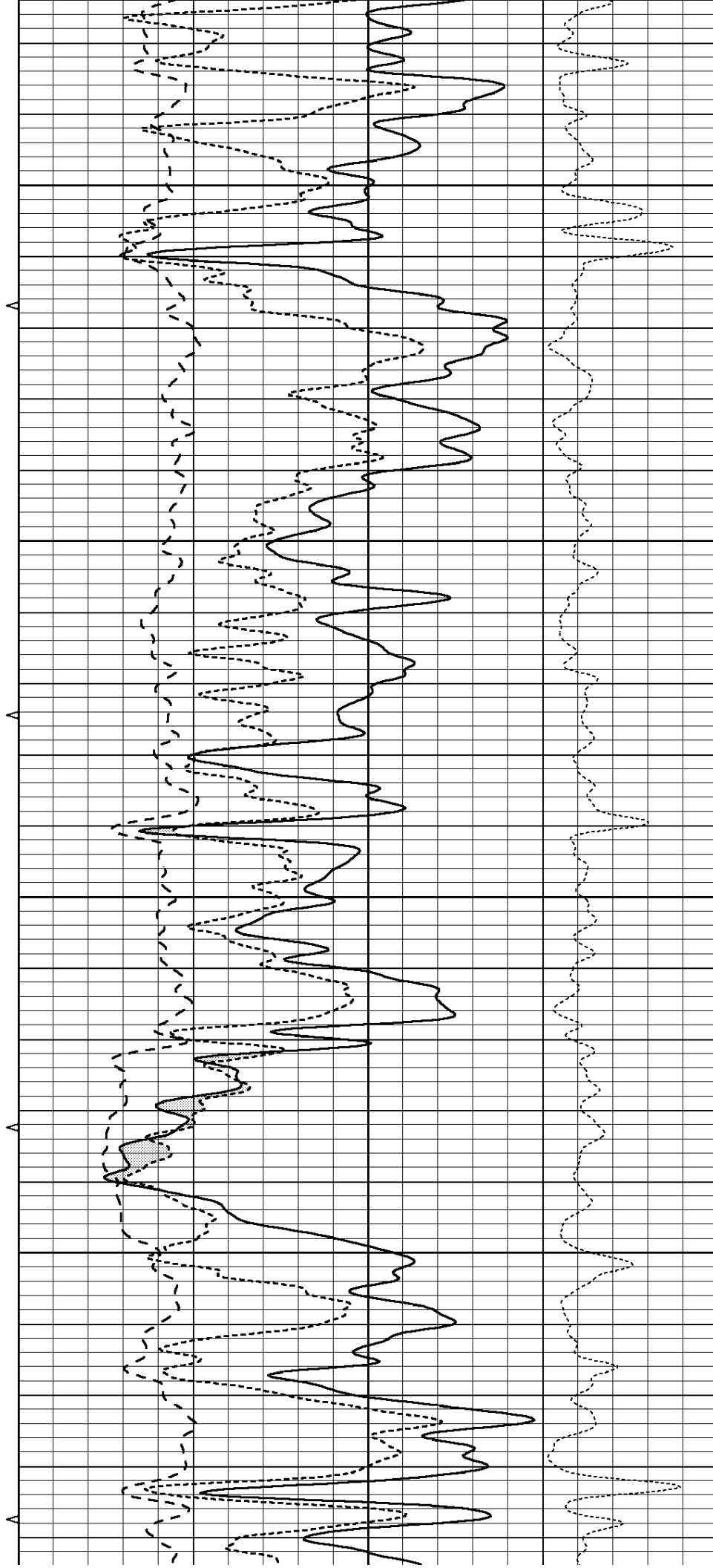


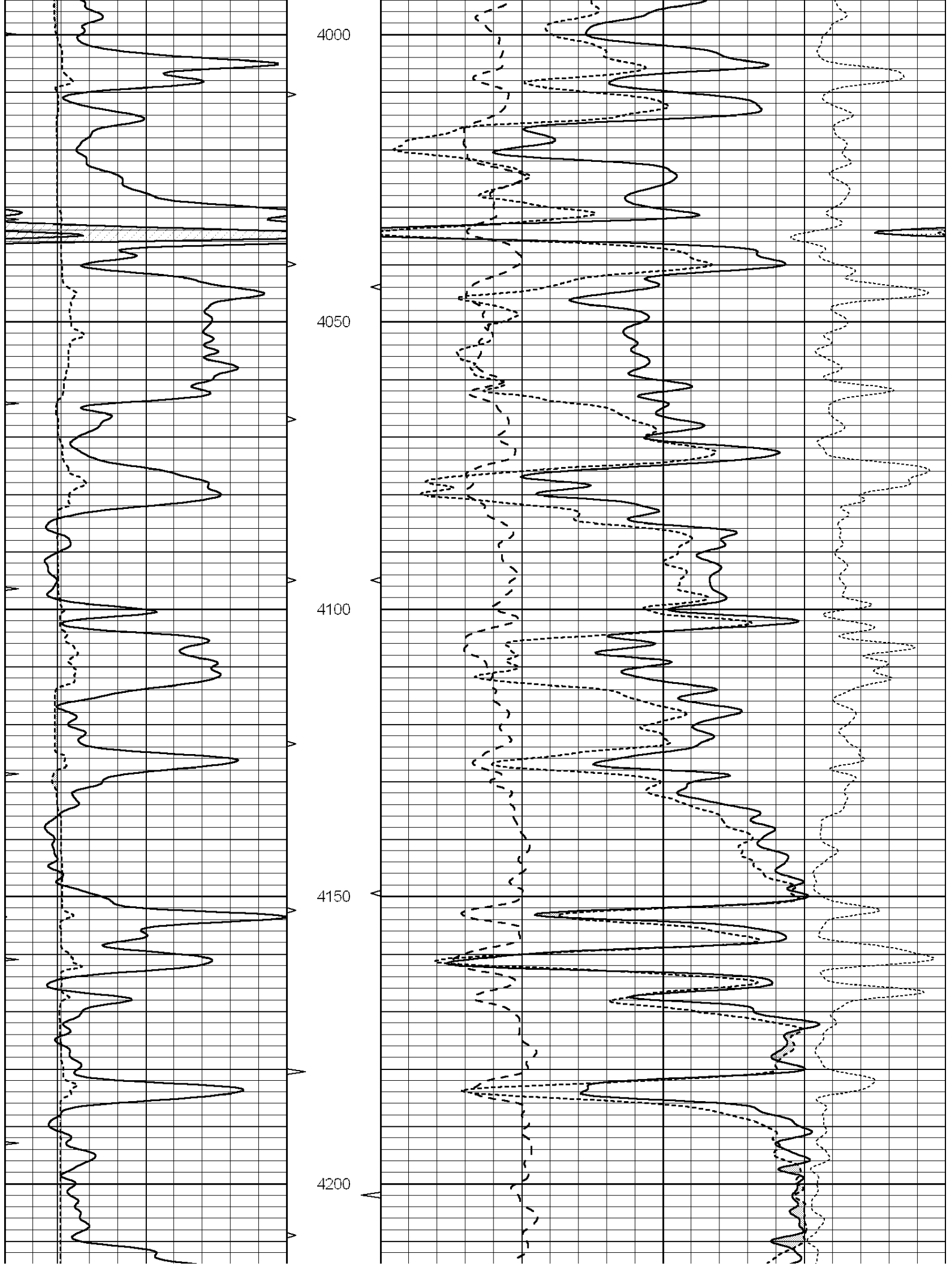
3800

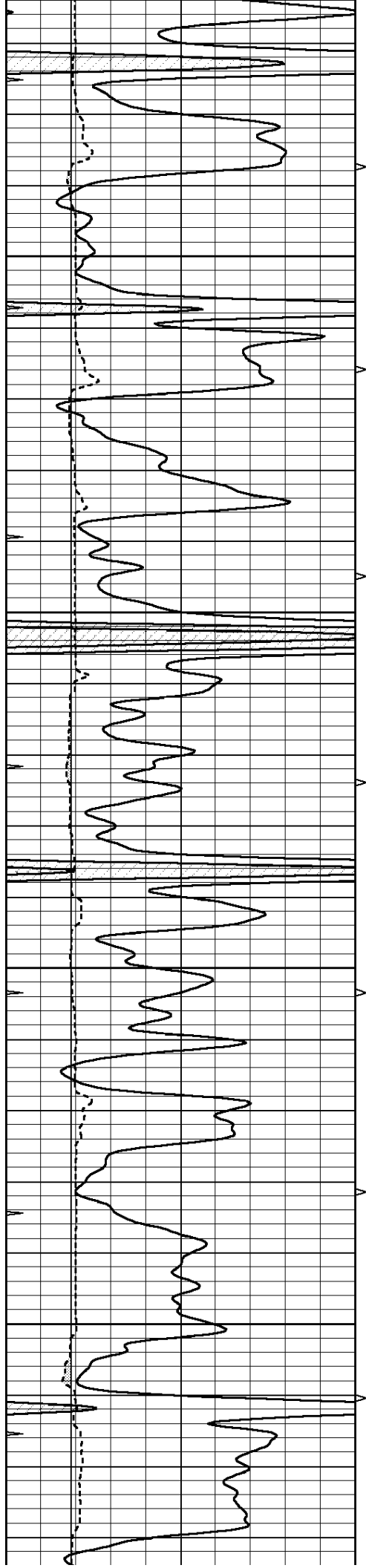
3850

3900

3950





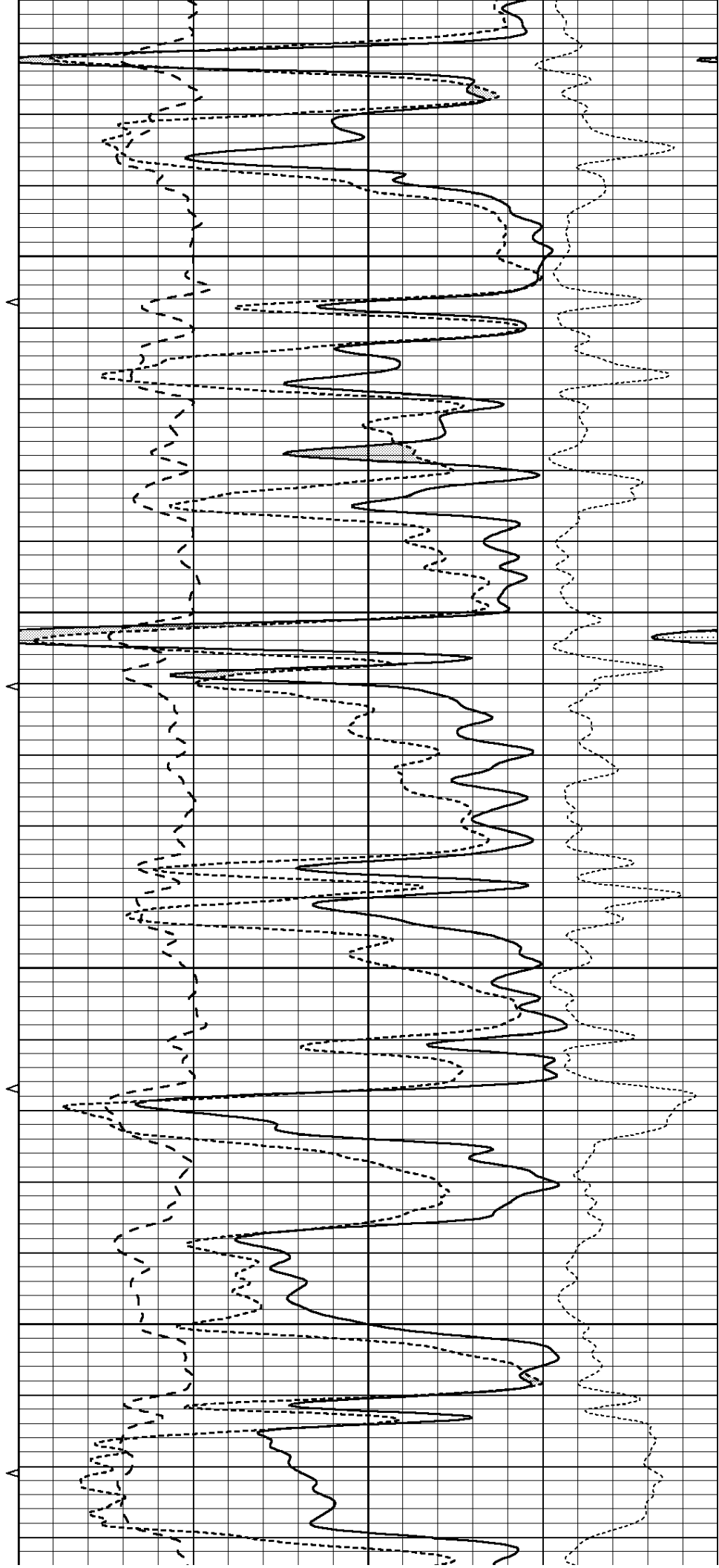


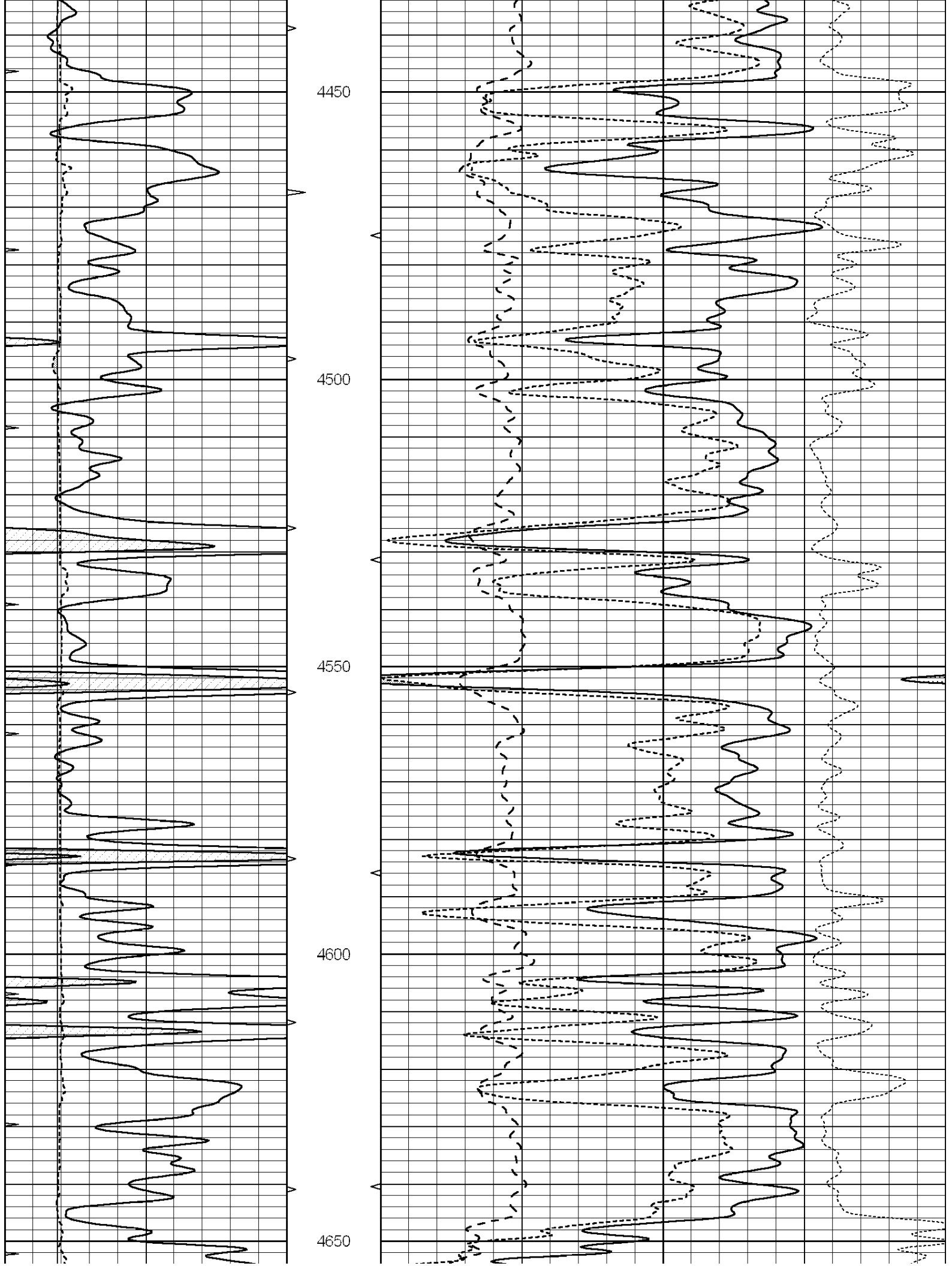
4250

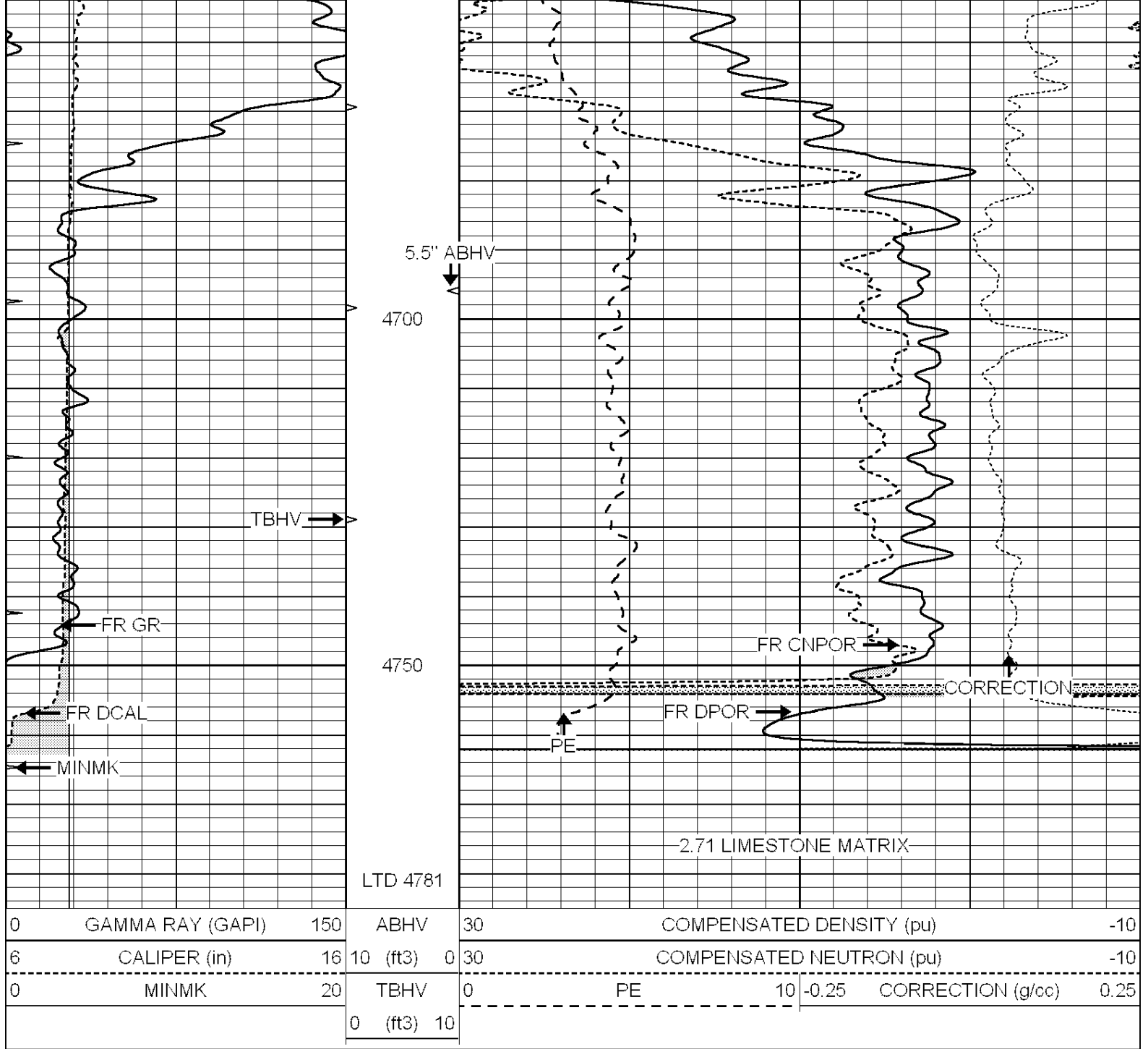
4300

4350

4400







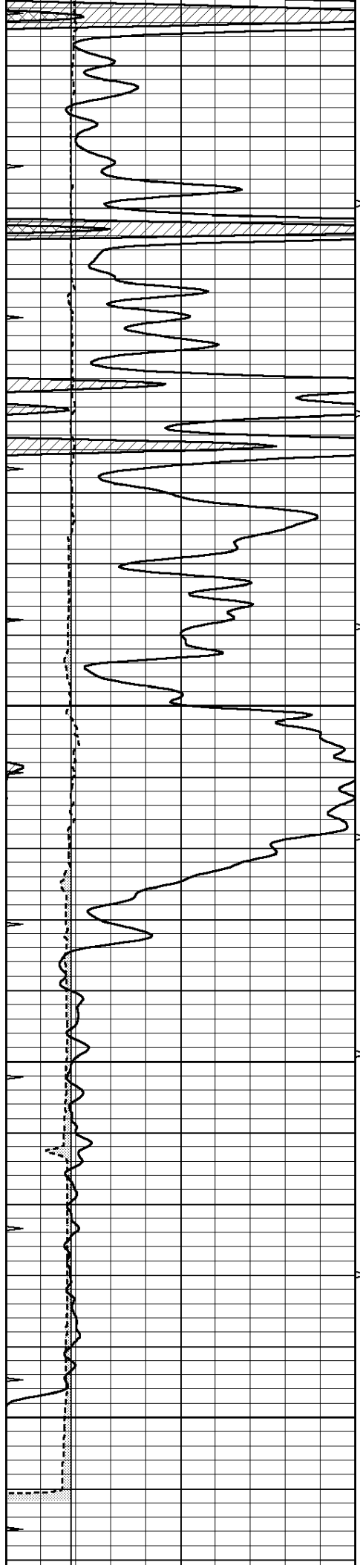
SUPERIOR
Hays,
Kansas

REPEAT SECTION

Database File: 006298pe.db
 Dataset Pathname: pass2.3
 Presentation Format: ldt_neu
 Dataset Creation: Fri Feb 25 01:59:34 2011 by Calc Open-Cased 090629
 Charted by: Depth in Feet scaled 1:240

0	GAMMA RAY (GAPI)	150	ABHV	30	COMPENSATED DENSITY (pu)	-10			
6	CALIPER (in)	16	10 (ft3)	0	30	COMPENSATED NEUTRON (pu)	-10		
0	MINMK	20	TBHV	0	PE	10	-0.25	CORRECTION (g/cc)	0.25
			0 (ft3)	10					



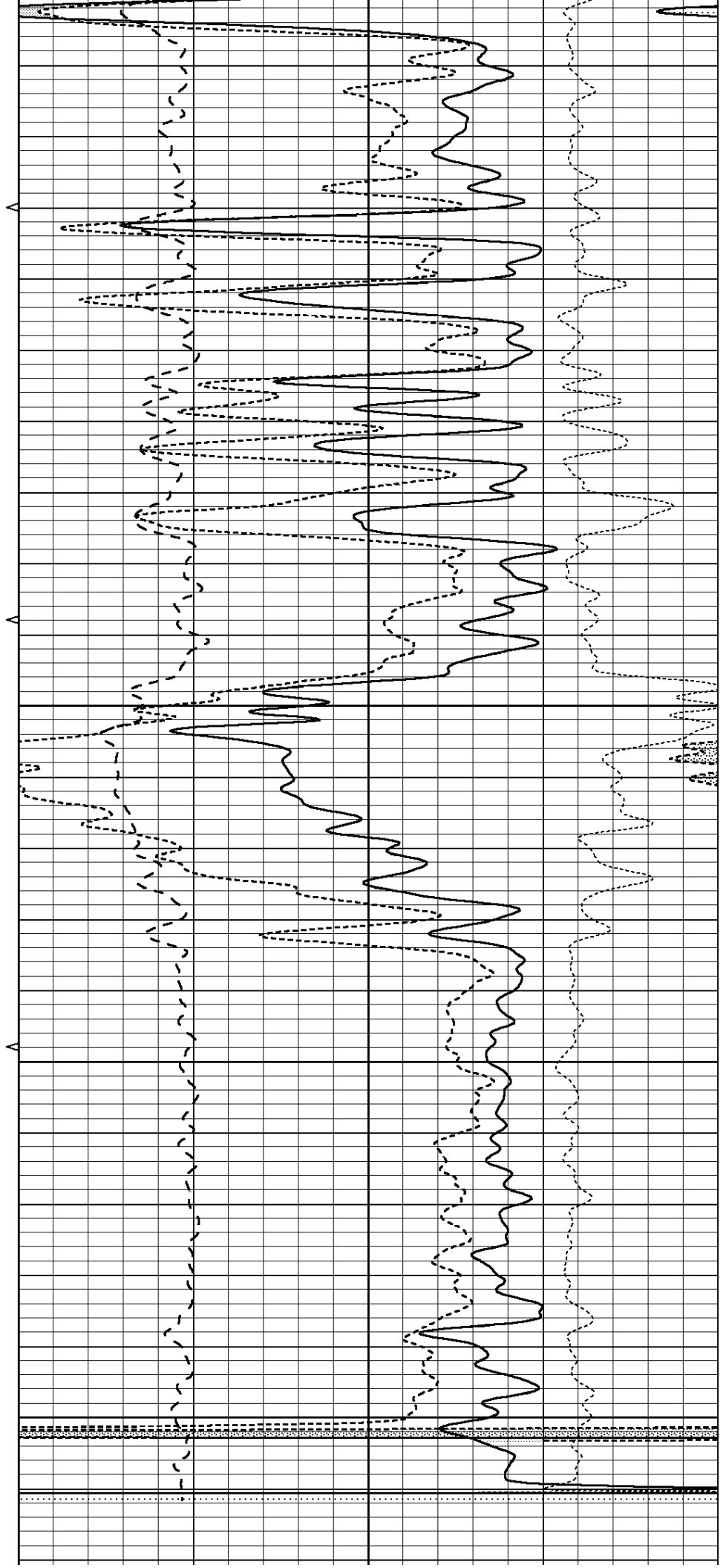


4600

4650

4700

4750



0	GAMMA RAY (GAPI)	150	ABHV	30	COMPENSATED DENSITY (pu)				-10	
6	CALIPER (in)	16	10 (ft3)	0	30	COMPENSATED NEUTRON (pu)				-10
0	MINMK	20	TBHV	0	PE	10	-0.25	CORRECTION (g/cc)	0.25	
			0 (ft3)	10						

Calibration Report

Database File: 006298pe.db
 Dataset Pathname: pass3.1
 Dataset Creation: Fri Feb 25 02:17:14 2011 by Calc Open-Cased 090629

Dual Induction Calibration Report

Serial-Model: DIL3-GEAR
 Performed: Fri Feb 25 01:15:56 2011

		Readings			References			Results	
Loop:	Air	Loop		Air	Loop		m	b	
Deep	0.011	0.656	V	0.000	400.000	mmho/m	640.000	0.000	
Medium	0.013	0.740	V	0.000	462.500	mmho/m	700.000	-11.000	
Internal:	Zero	Cal		Zero	Cal		m	b	
Deep	0.002	0.645	V	0.000	400.000	mmho/m	622.059	-1.071	
Medium	0.007	0.740	V	0.000	462.500	mmho/m	631.393	-4.555	

Litho Density Calibration Report

Serial: 003N Model: PRB
 Performed Tue Sep 08 14:14:44 2009

Litho Density Calibration

	Background	Magnesium	Aluminum	Sandstone	
Window 1	2042.6	12312.8	4225.8	13758.4	cps
Window 2	1855.8	10134.7	3624.2	11113.1	cps
Window 3	1639.4	6760.2	2716.3	7260.3	cps
Window 4	466.4	469.2	466.1	476.5	cps
Long Space	0.0	8278.9	1768.4	9257.4	cps
Short Space	2.2	2377.3	1544.1	2574.2	cps
Rho		1.7100	2.5900	1.3800	g/cc
Pe			2.5700	1.5500	
Rib Angle	: 44.4	Rib Slope	: 0.979	Density/Spine Ratio	: 0.549
Spine Angle	: 74.4	Spine Slope	: 3.577	Spine Intercept	: -18.8

Caliper

	Readings	Reference	
Low Ref	1.8	5.7	
High Ref	4.6	14.0	
Gain: 3.0			Offset: 0.5

Compensated Neutron Calibration Report

Serial Number: NEU_3I
 Tool Model: G

CALIBRATION

Detector	Readings	Target	Normalization
----------	----------	--------	---------------

Detector	Readings	Target	Normalization
Short Space	997.00 cps	1000.00 cps	1.0000
Long Space	986.00 cps	1000.00 cps	1.0000

Gamma Ray Calibration Report

Serial Number:	GR3	
Tool Model:	OPEN	
Performed:	Thu Feb 24 22:00:20 2011	
Calibrator Value:	200.0	GAPI
Background Reading:	3.0	cps
Calibrator Reading:	186.0	cps
Sensitivity:	0.6000	GAPI/cps