



**SUPERIOR**  
Hays,  
Kansas

**SONIC**  
LOG  
(TIGHT HOLE)

Company NEW GULF OPERATING, LLC.  
Well LAURA #1  
Field WILDCAT  
County LOGAN  
State KANSAS

Company NEW GULF OPERATING, LLC.  
Well LAURA #1  
Field WILDCAT  
County LOGAN State KANSAS

Location: API # : 15-109-20982-0000  
883' FNL & 1716' FEL  
SEC 31 TWP 11S RGE 32W  
Permanent Datum GROUND LEVEL Elevation 3087  
Log Measured From KELLY BUSHING 8' A.G.L.  
Drilling Measured From KELLY BUSHING  
Other Services  
CDL/CNL/PE  
DIL/MEL  
Elevation  
K.B. 3095  
D.F. 3093  
G.L. 3087

Date	2/25/11
Run Number	TWO
Depth Driller	4780
Depth Logger	4781
Bottom Logged Interval	4768
Top Log Interval	200
Casing Driller	8 5/8" @ 265'
Casing Logger	264
Bit Size	7 7/8"
Type Fluid in Hole	CHEMICAL MUD
Density / Viscosity	9.3/55
pH / Fluid Loss	10.5/7.2
Source of Sample	FLOWLINE
Rim @ Meas. Temp	1.10 @ 78F
Rmf @ Meas. Temp	.825 @ 78F
Rmc @ Meas. Temp	1.32 @ 78F
Source of Rmf / Rmc	MEASUREMENT
Rim @ BHT	.698 @ 123F
Time Circulation Stopped	5 HOURS
Time Logger on Bottom	1:15 A.M.
Maximum Recorded Temperature	123F
Equipment Number	0836
Location	HAYS, KANSAS
Recorded By	JEFF LUEBBERS
Witnessed By	CURTIS COVERY

<<< Fold Here >>>

All interpretations are opinions based on inferences from electrical or other measurements and we cannot and do not guarantee the accuracy or correctness of any interpretation, and we shall not, except in the case of gross or willful negligence on our part, be liable or responsible for any loss, costs, damages, or expenses incurred or sustained by anyone resulting from any interpretation made by any of our officers, agents or employees. These interpretations are also subject to our general terms and conditions set out in our current Price Schedule.

**Comments**

THANK YOU FOR USING SUPERIOR WELL SERVICE HAYS, KANSAS (785) 628-6395  
DIRECTIONS  
OAKLEY, KS. (JUNCTION OF OLD 40 & HWY 83) 4S.ON HWY 83 TO "APACHE ACRE RD.", 3 1/4W., S. INTO

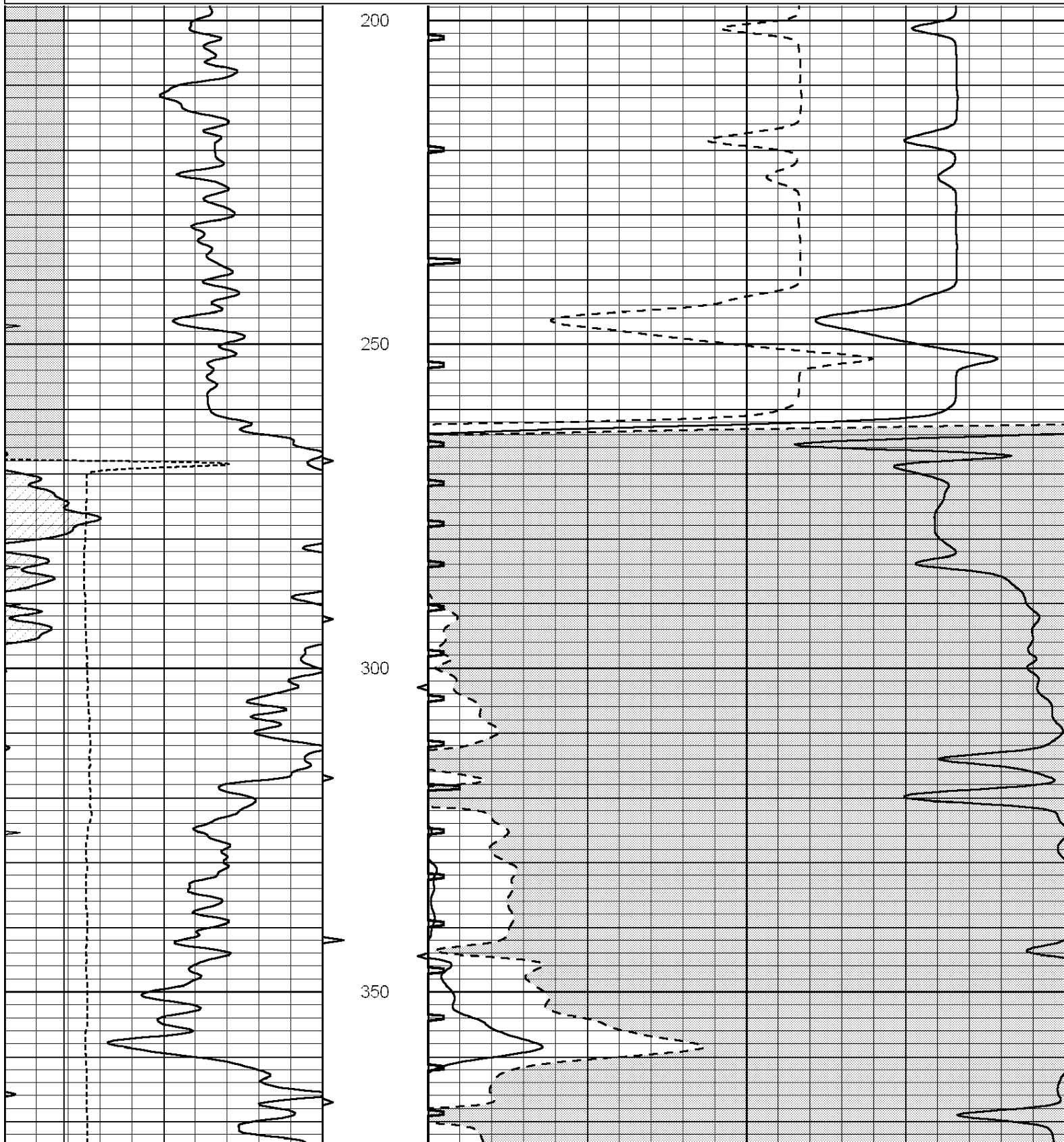


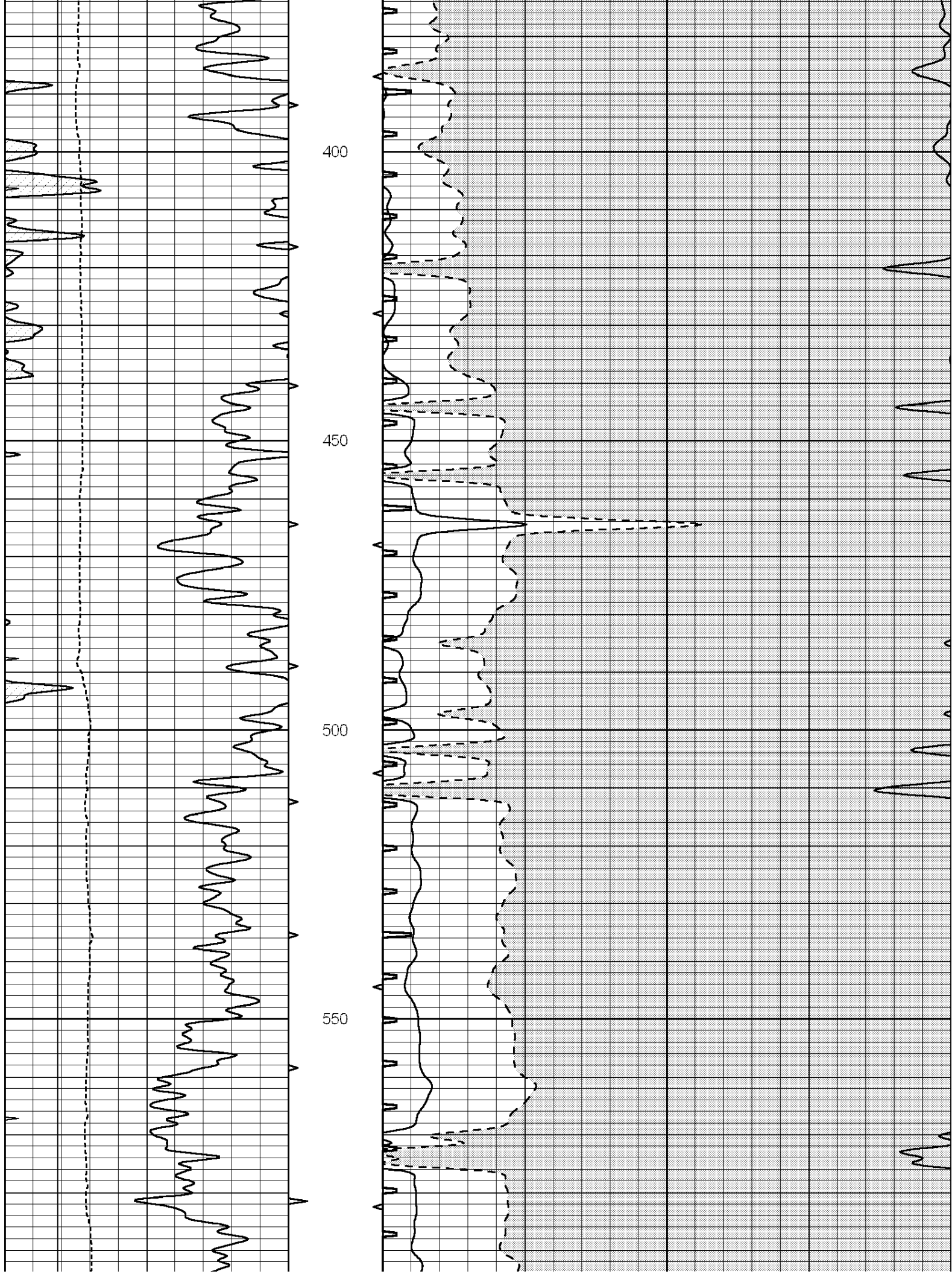
**SUPERIOR**  
Hays,  
Kansas

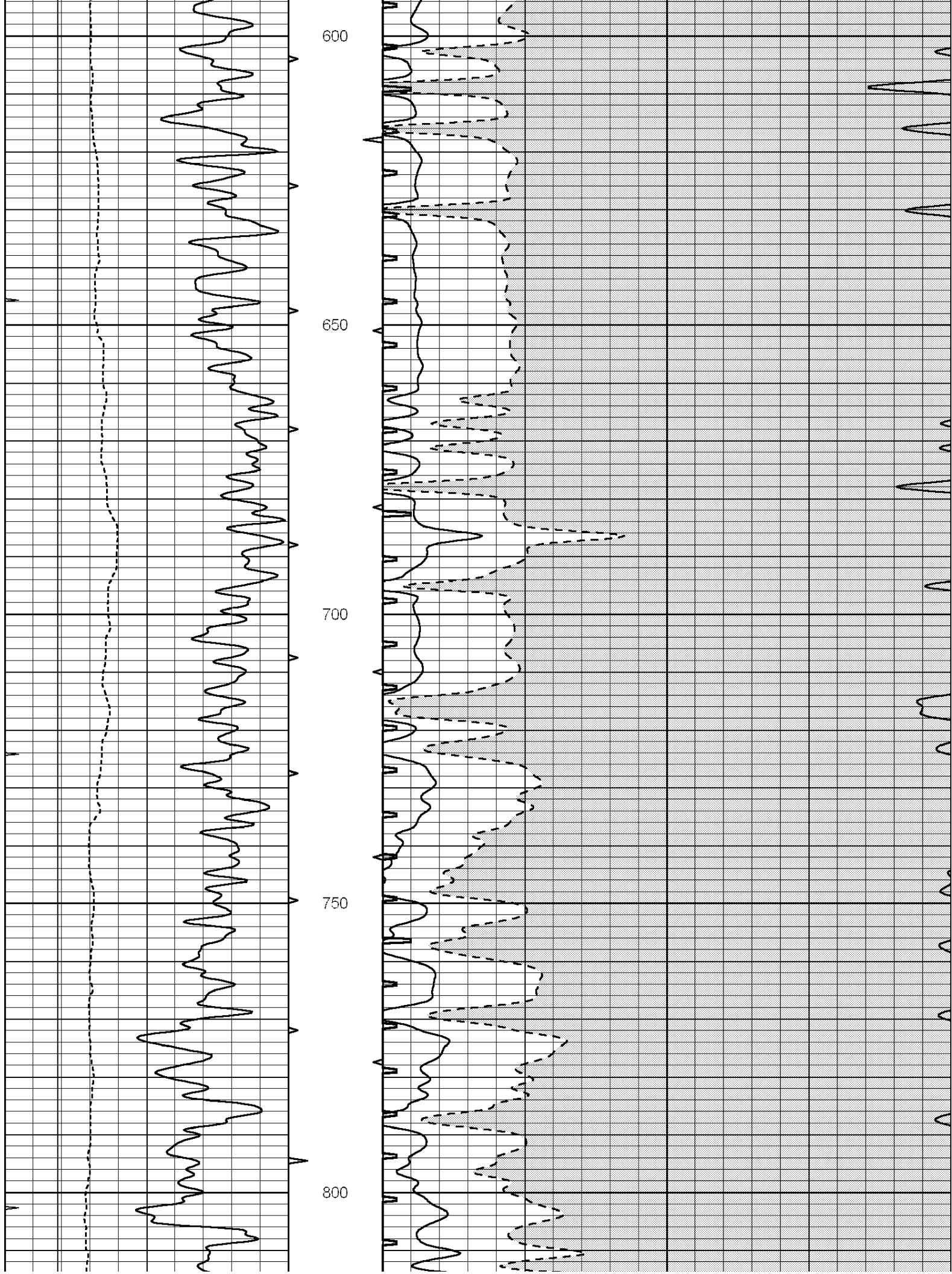
**MAIN SECTION**

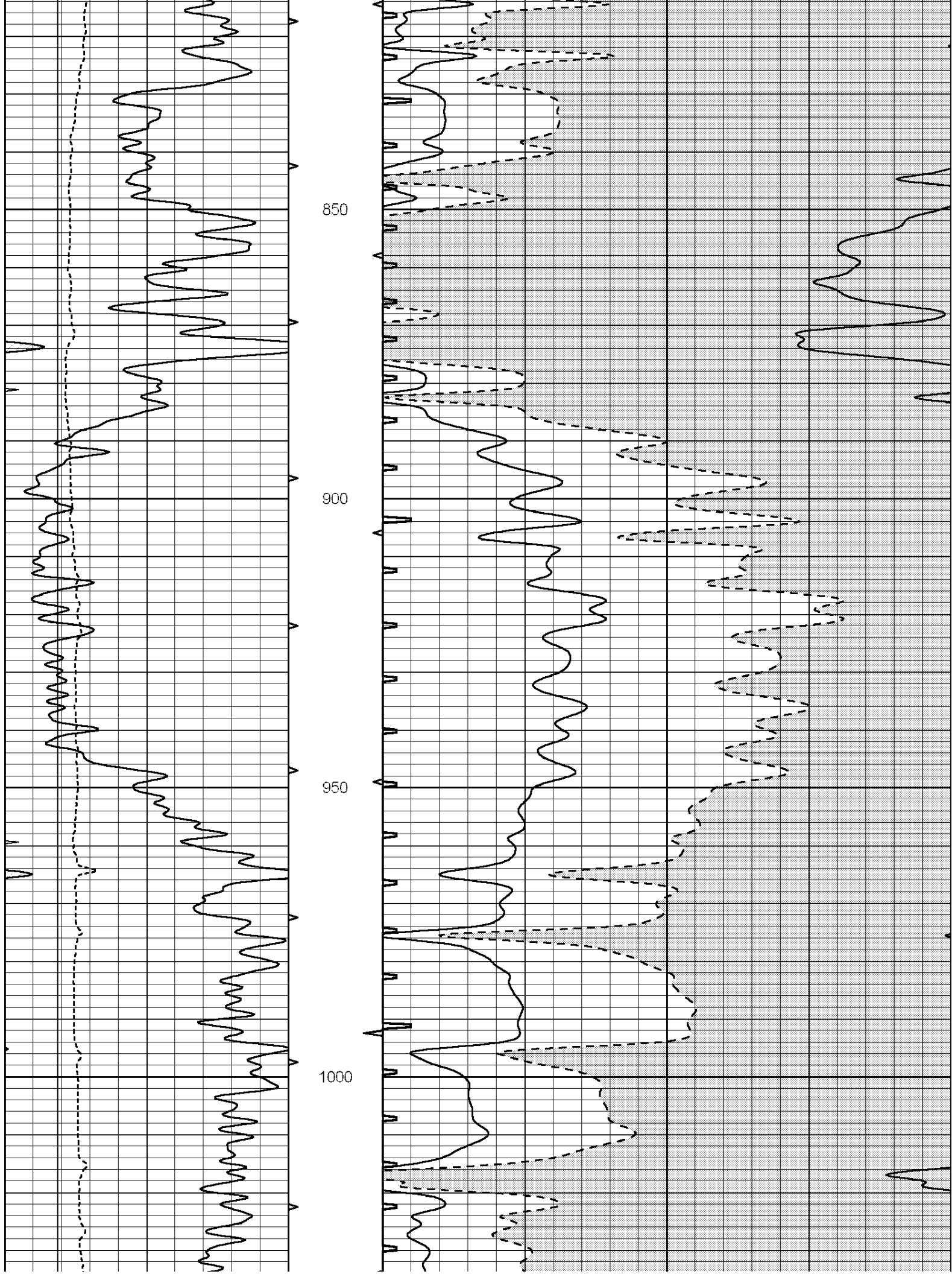
Database File: 006298pe.db  
 Dataset Pathname: pass6.2  
 Presentation Format: slt  
 Dataset Creation: Fri Feb 25 05:35:10 2011 by Calc Open-Cased 090629  
 Charted by: Depth in Feet scaled 1:240

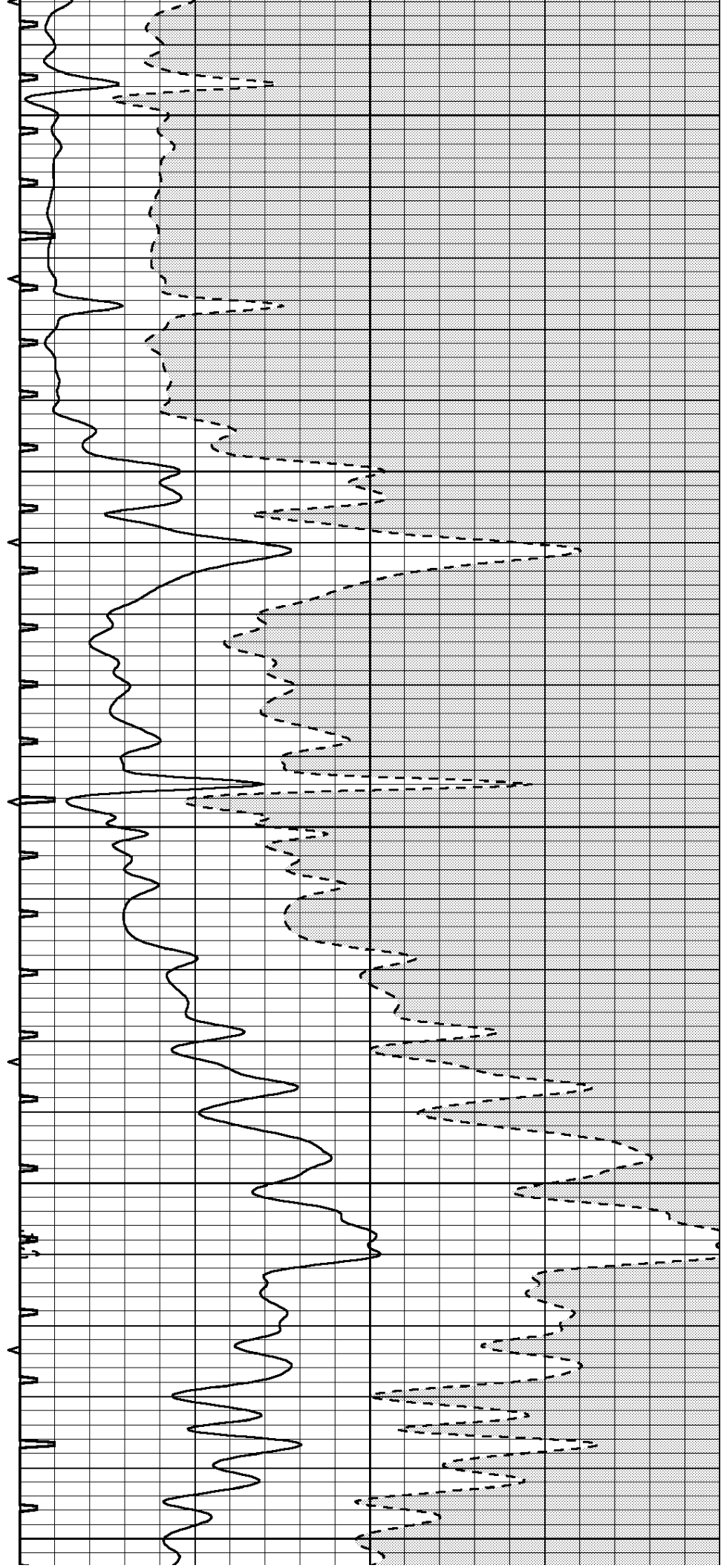
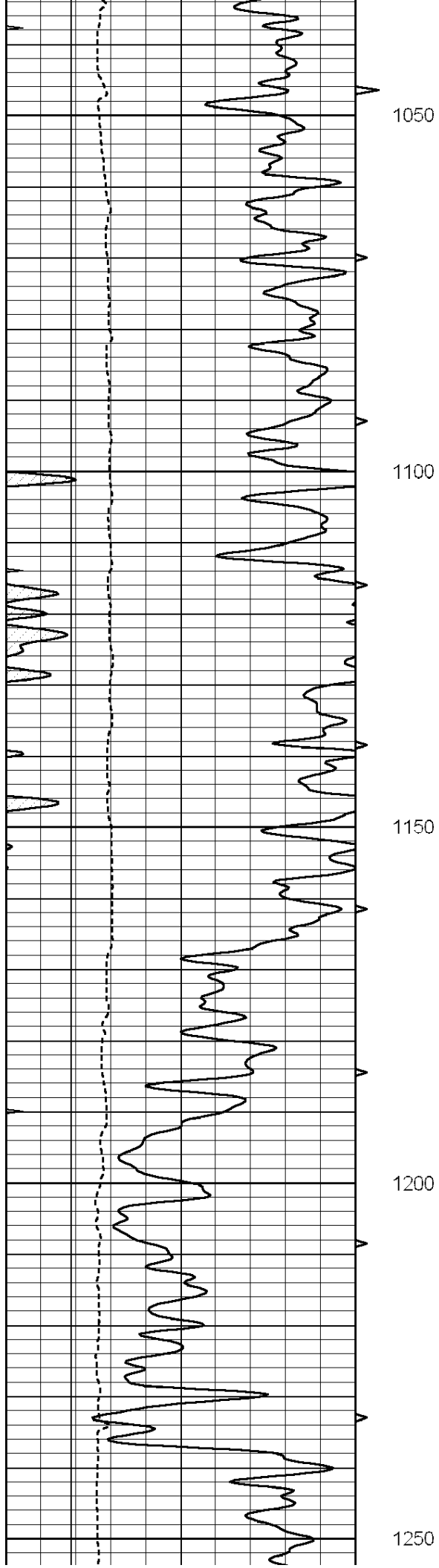
0	GAMMA RAY (GAPI)	150	ABHV	140	DELTA TIME (usec/ft)	40
6	CALIPER (in)	16	10 (ft3)	0	30	SONIC POROSITY (pu)
0	MINMK	20	TBHV	0	ITT (msec)	20
			0 (ft3)	10		

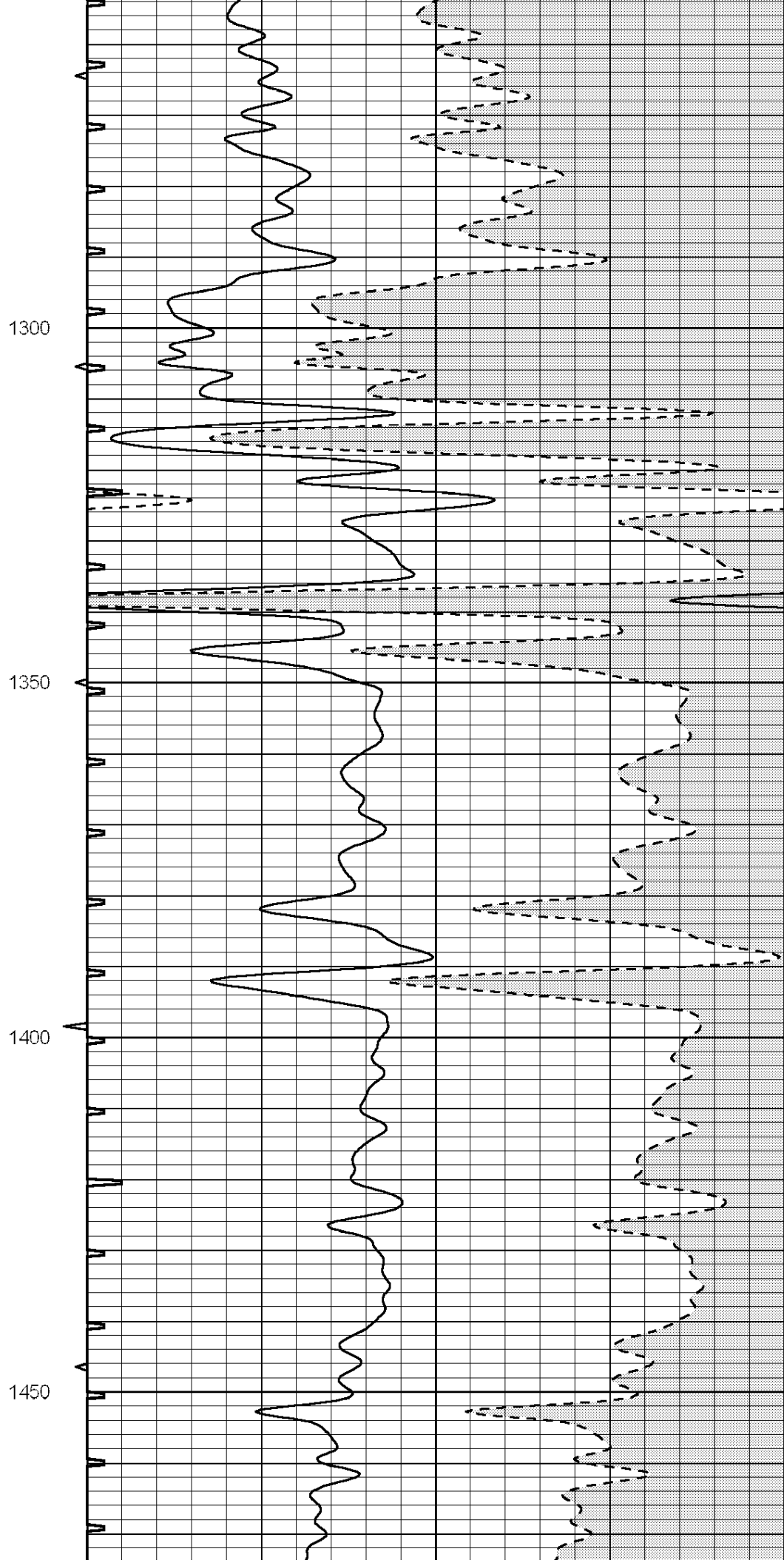
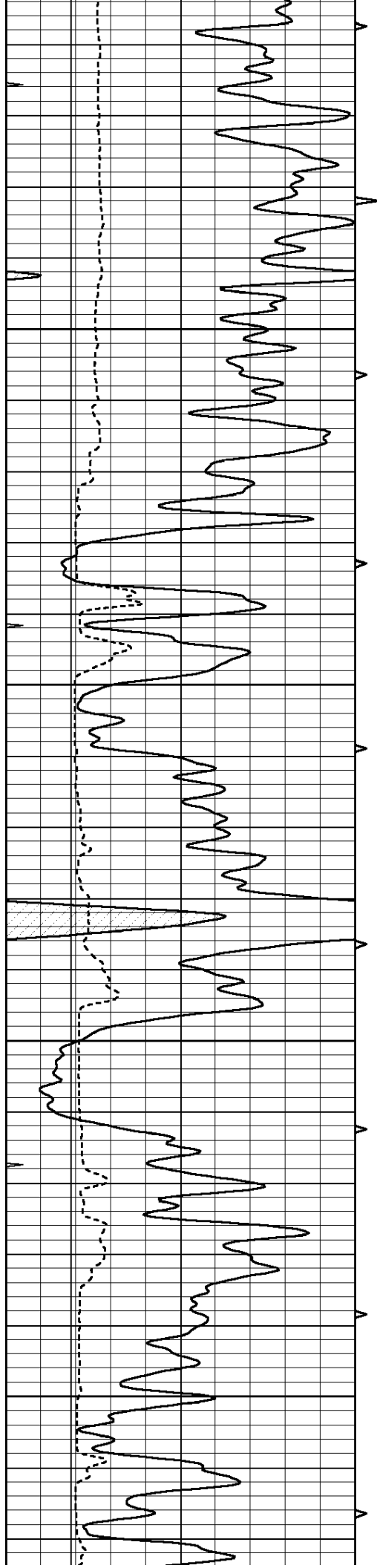










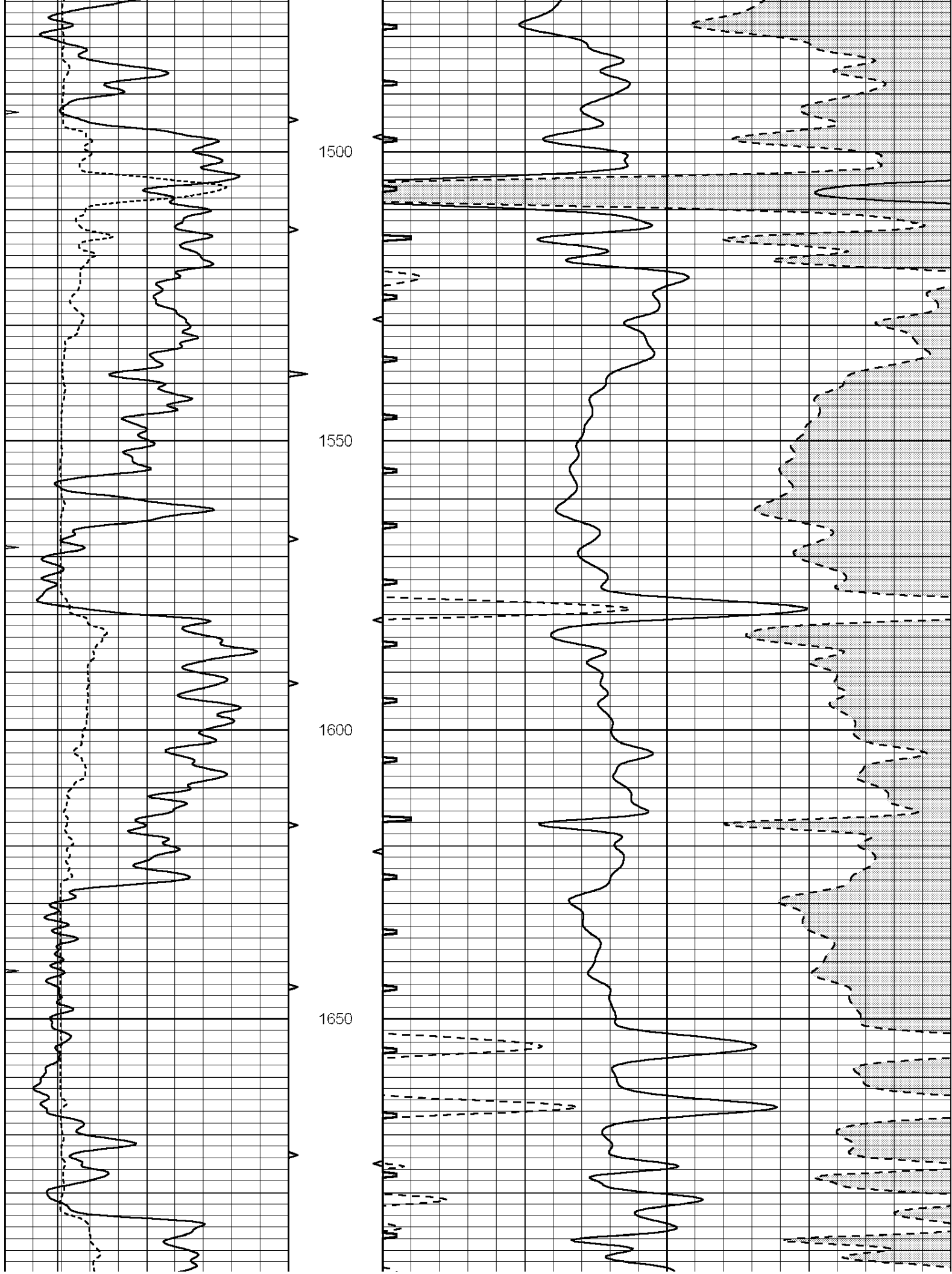


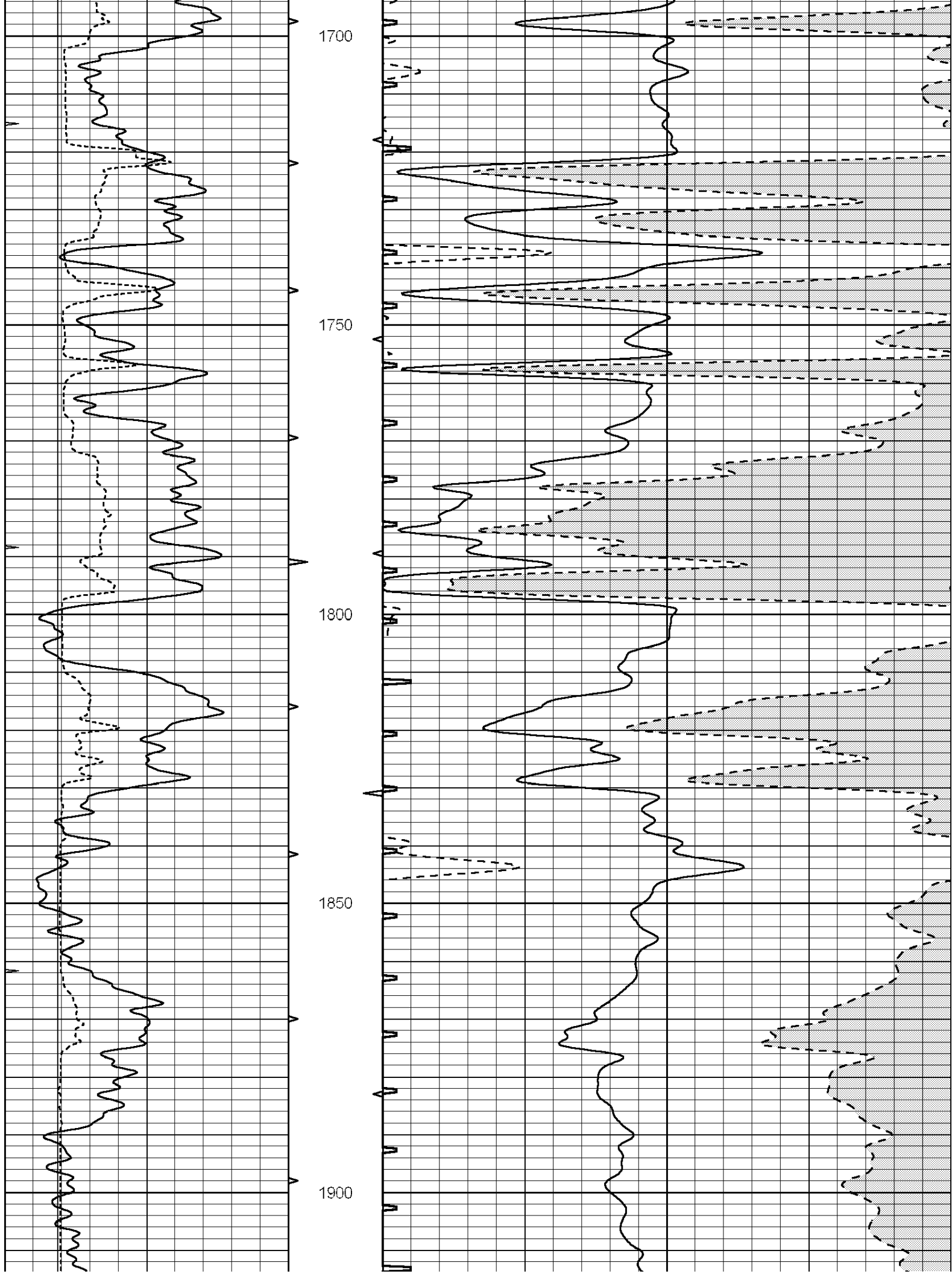
1300

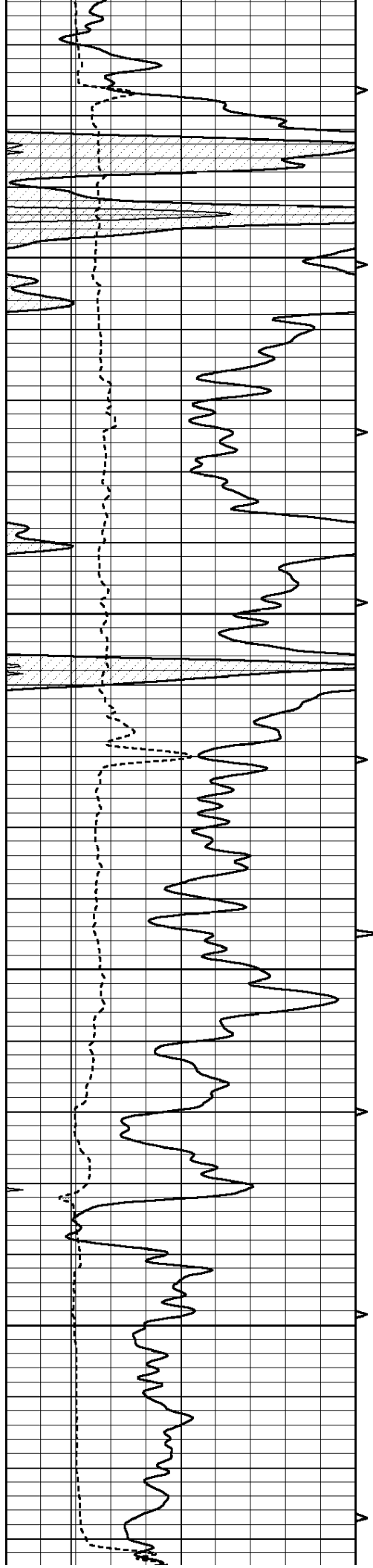
1350

1400

1450





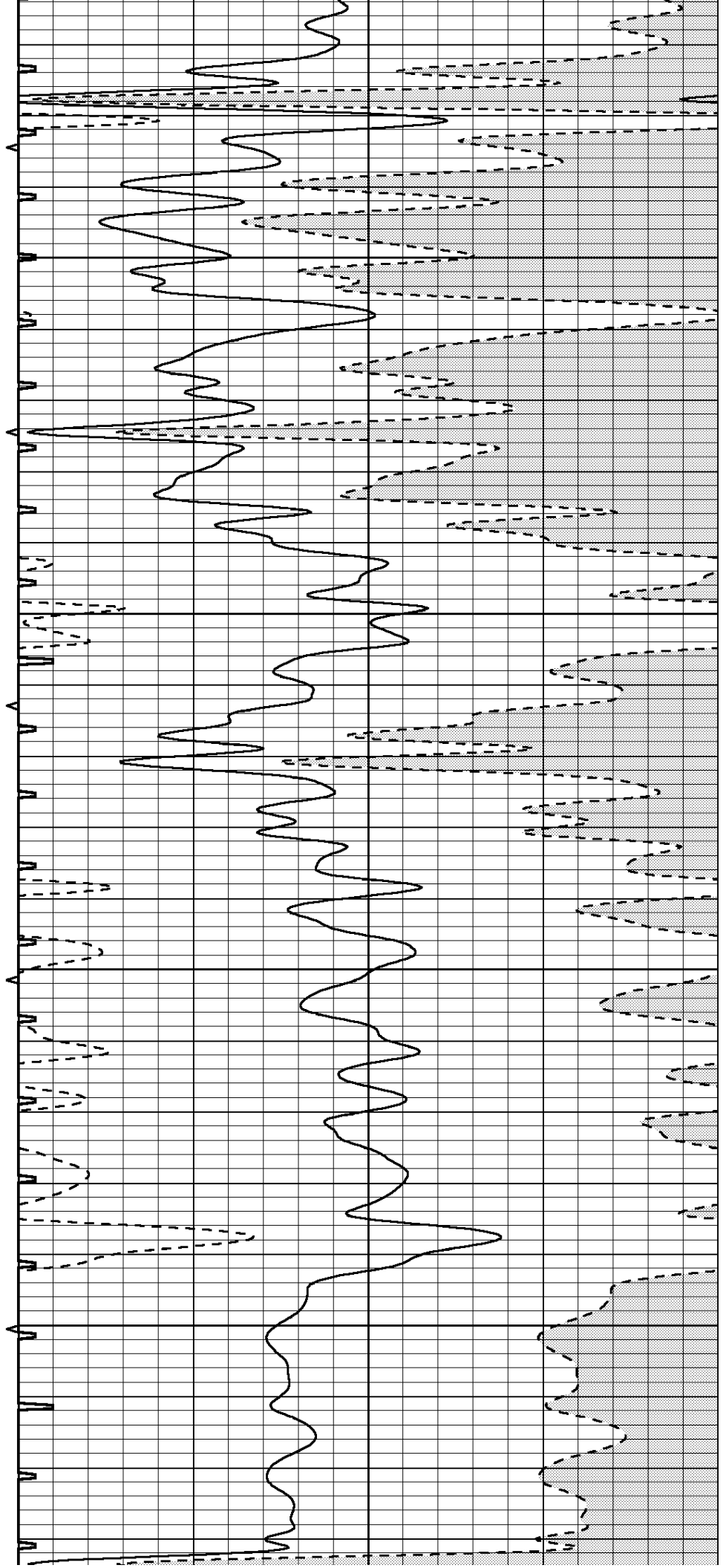


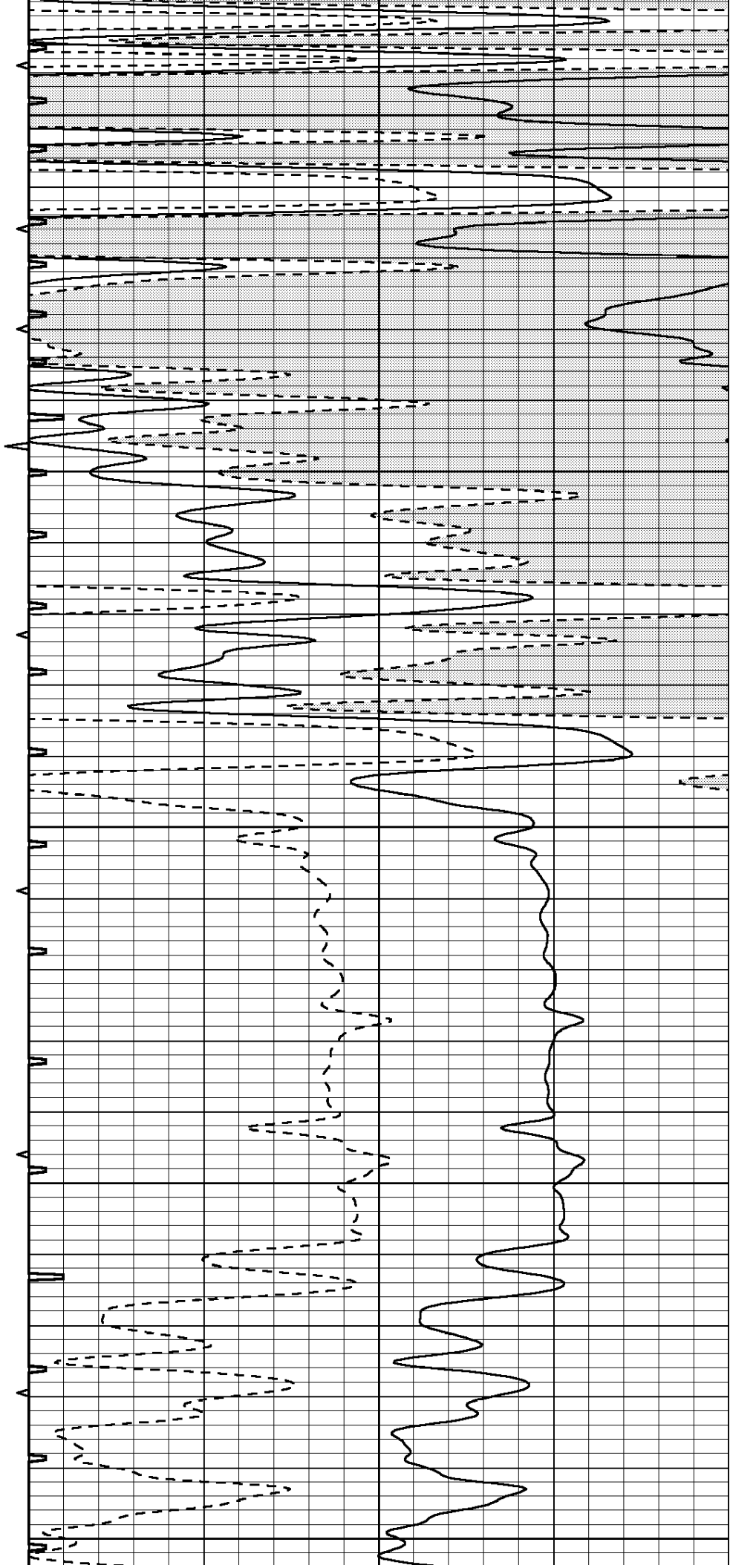
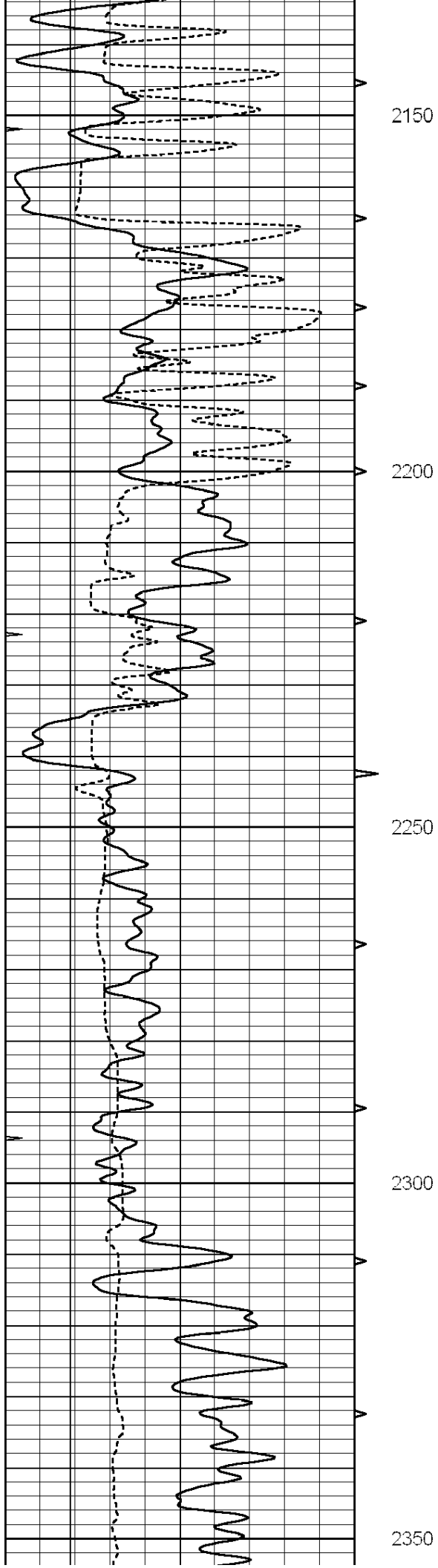
1950

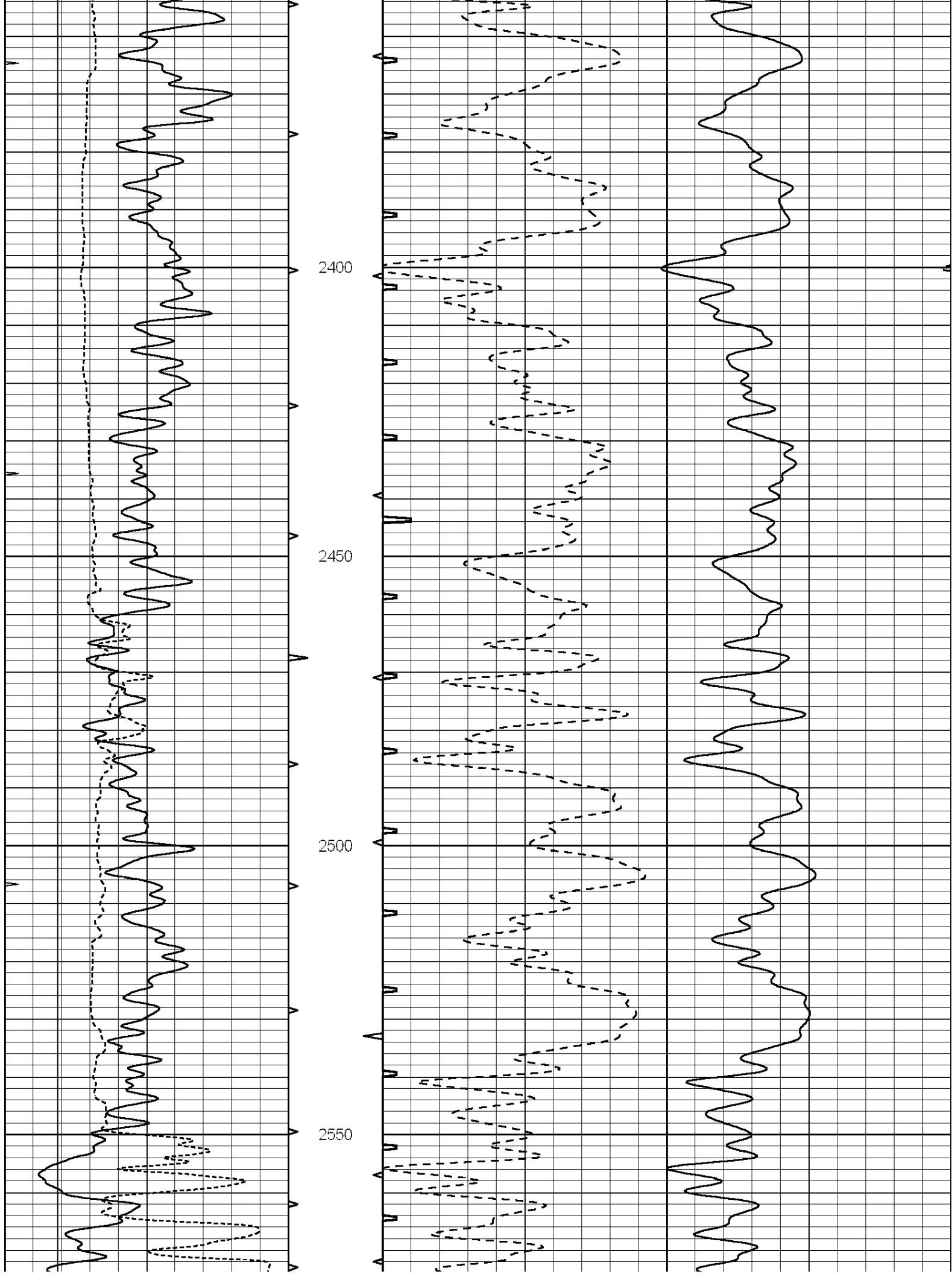
2000

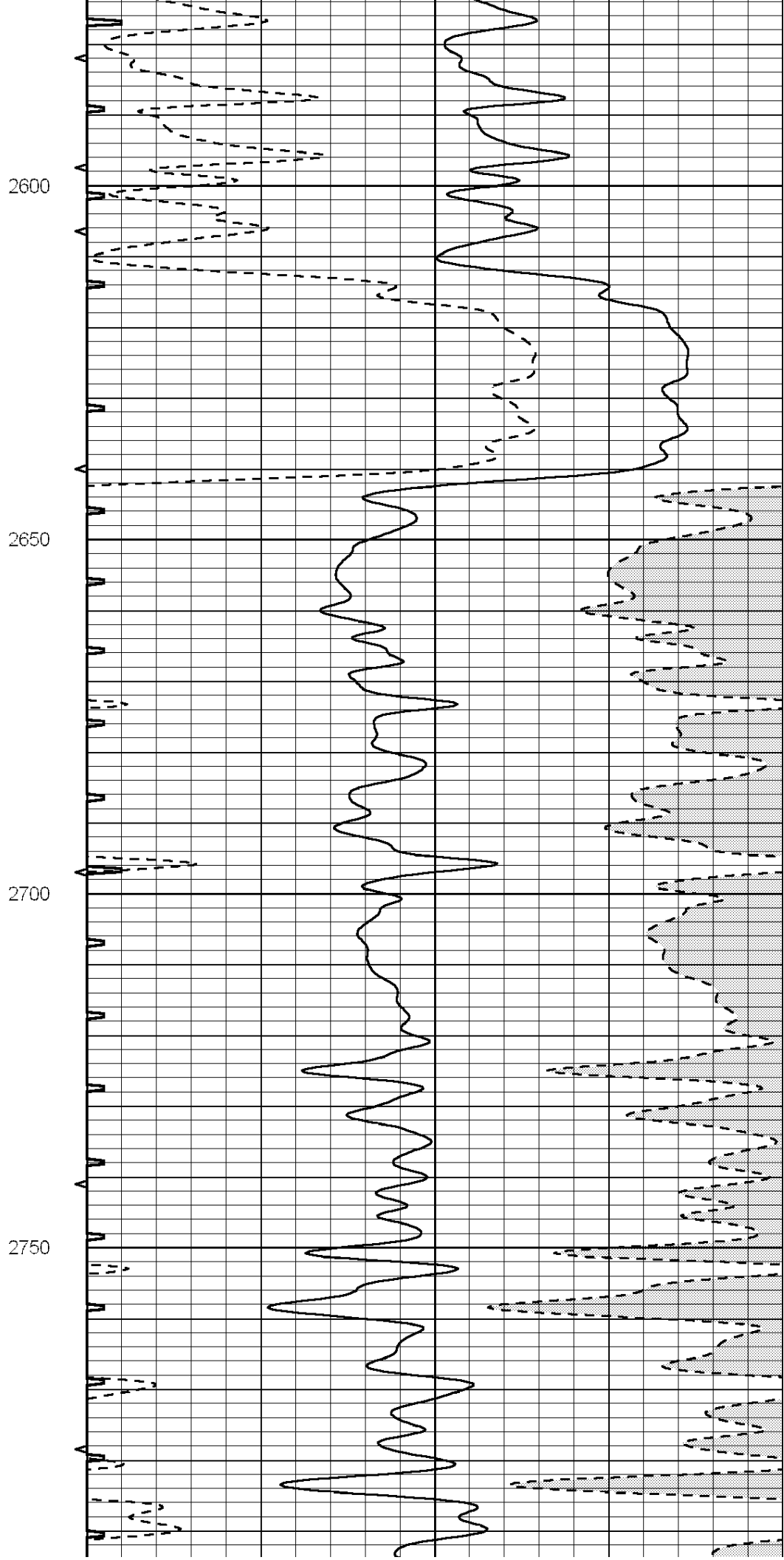
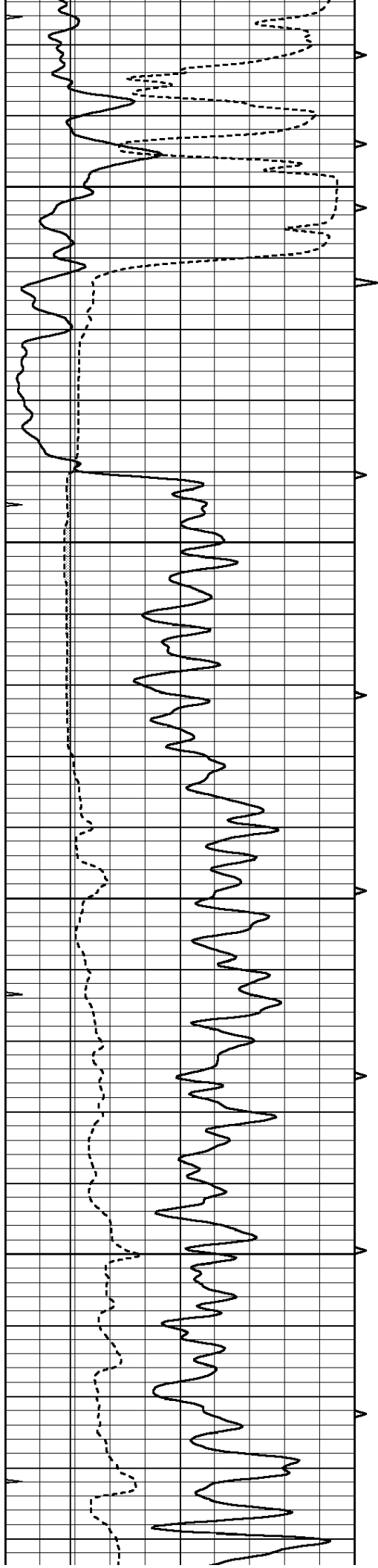
2050

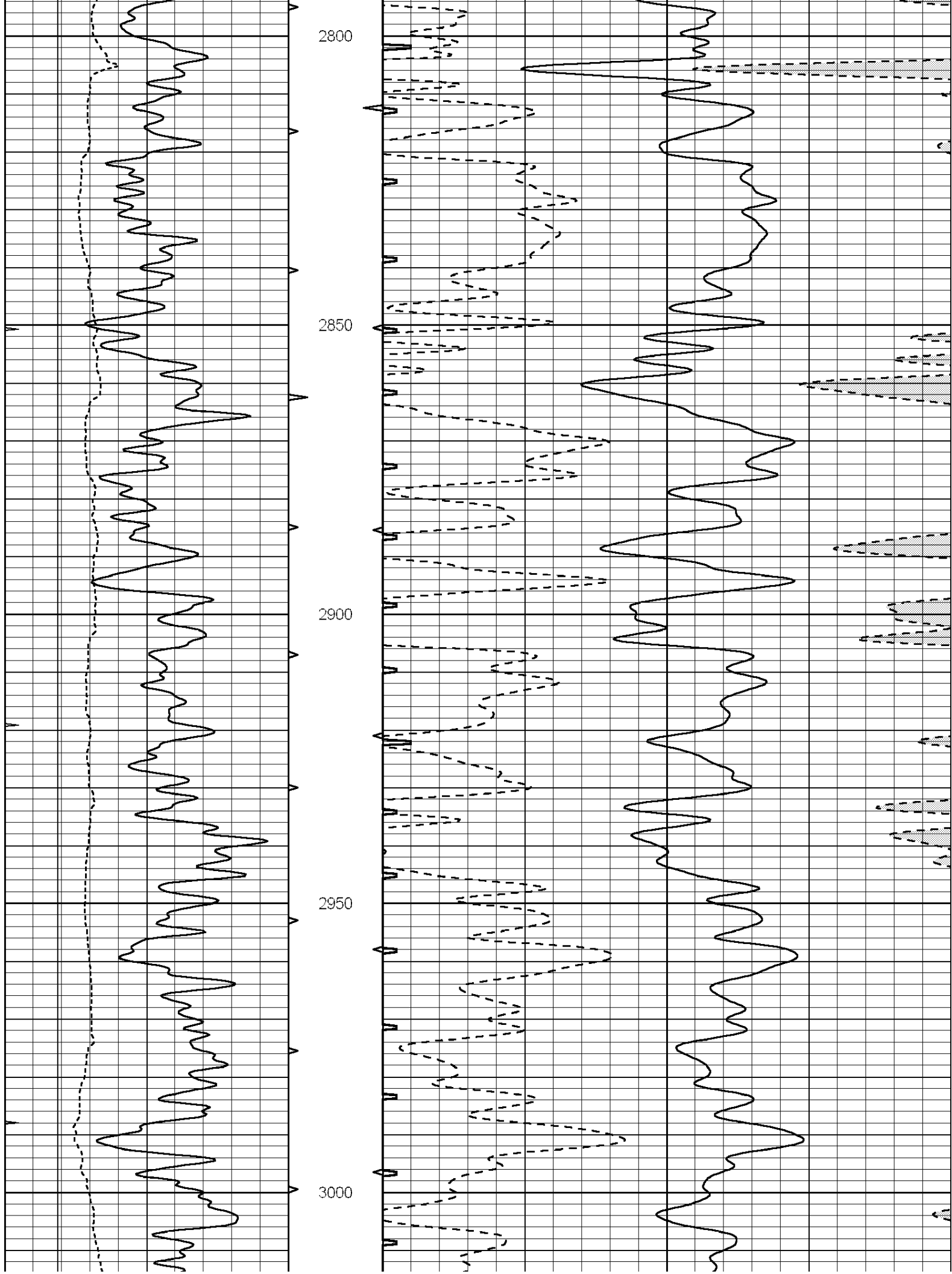
2100

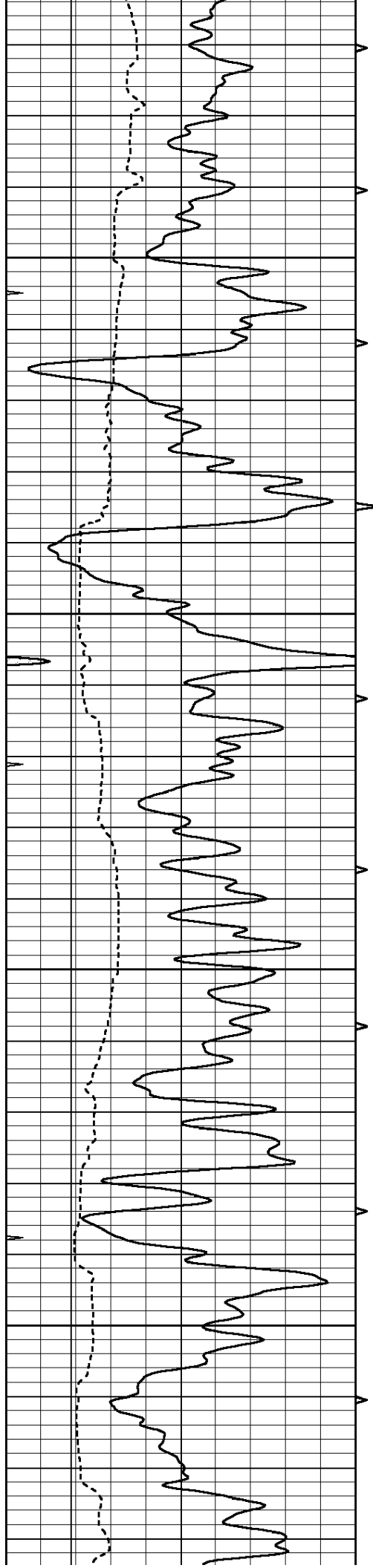










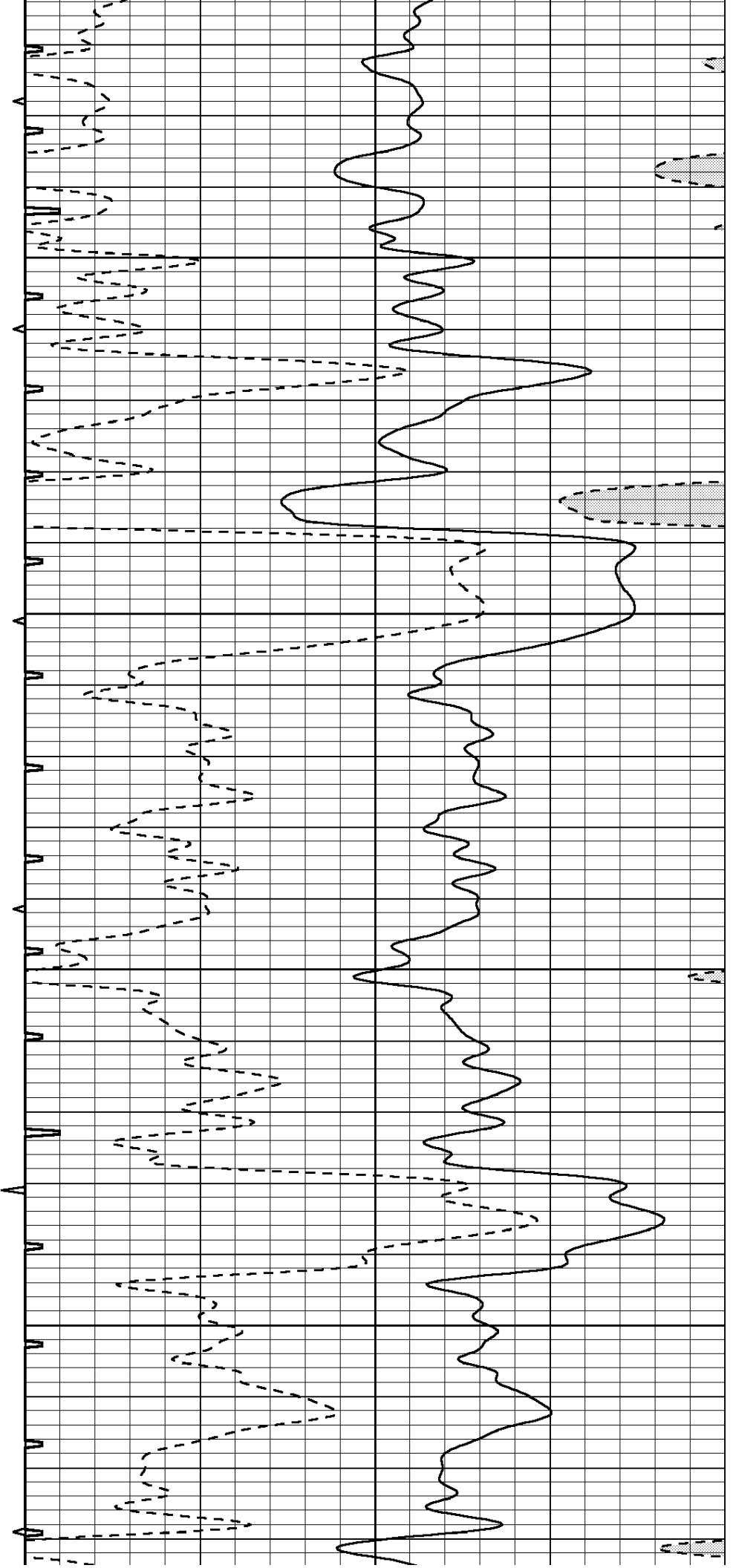


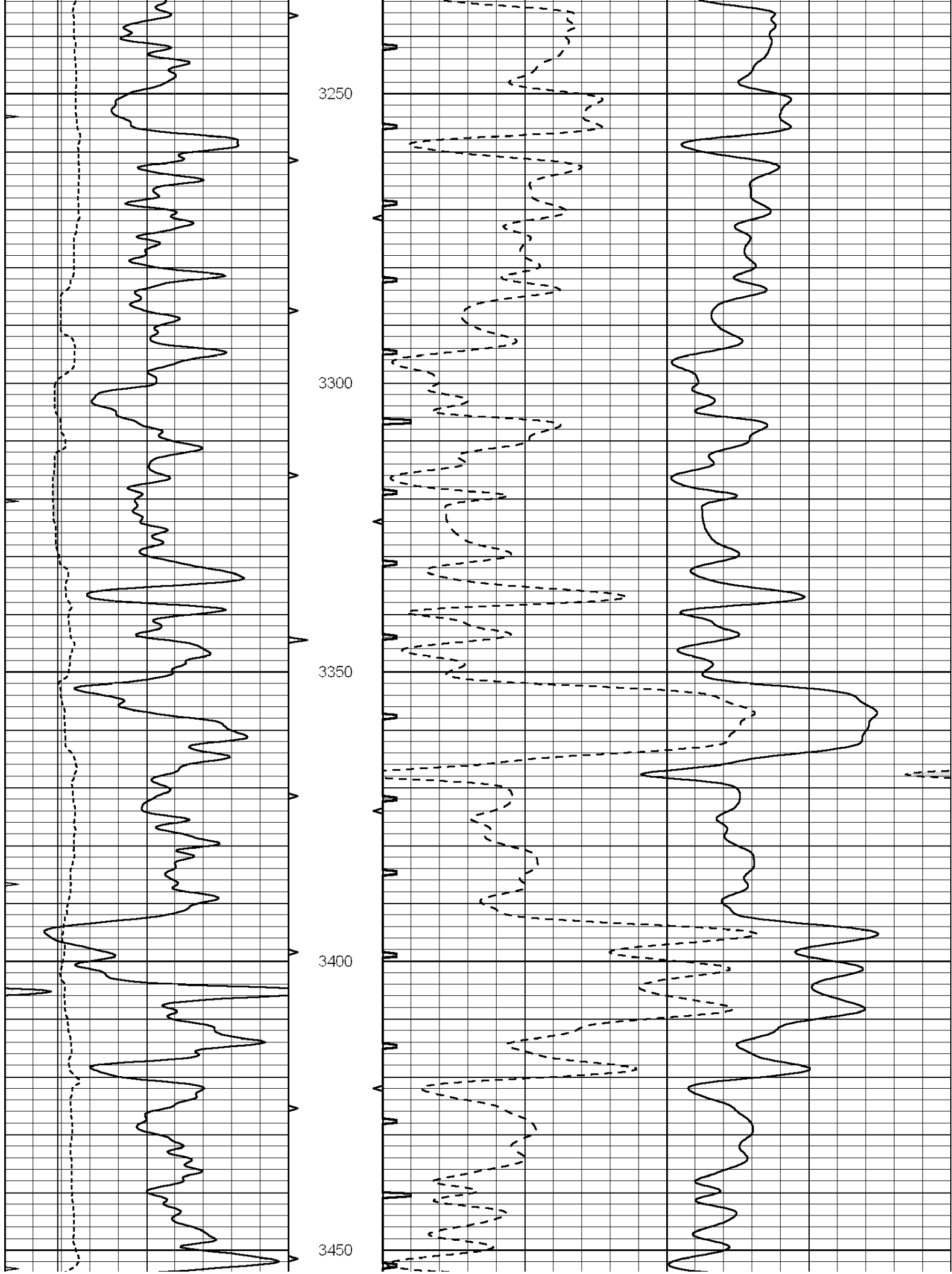
3050

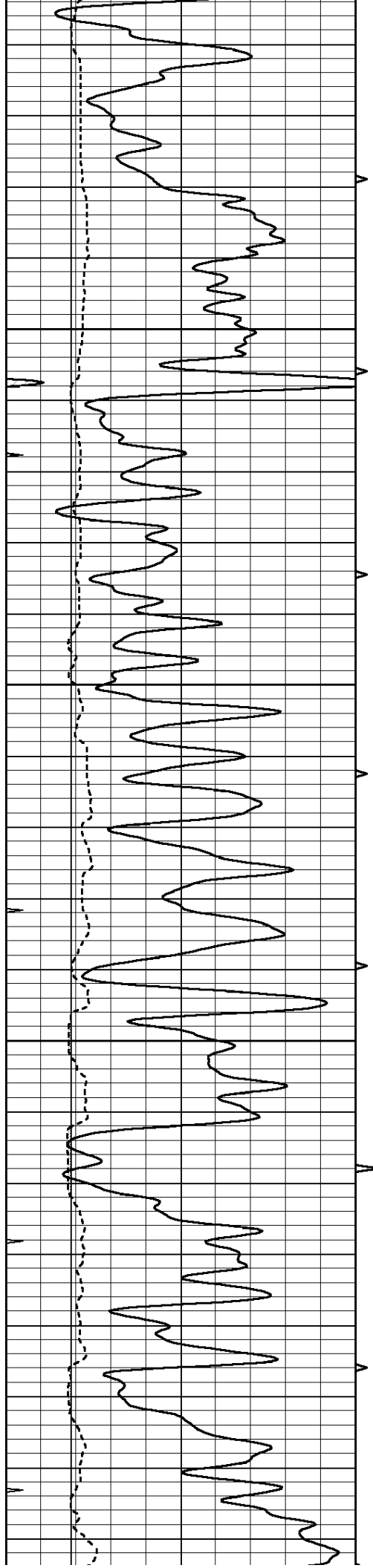
3100

3150

3200





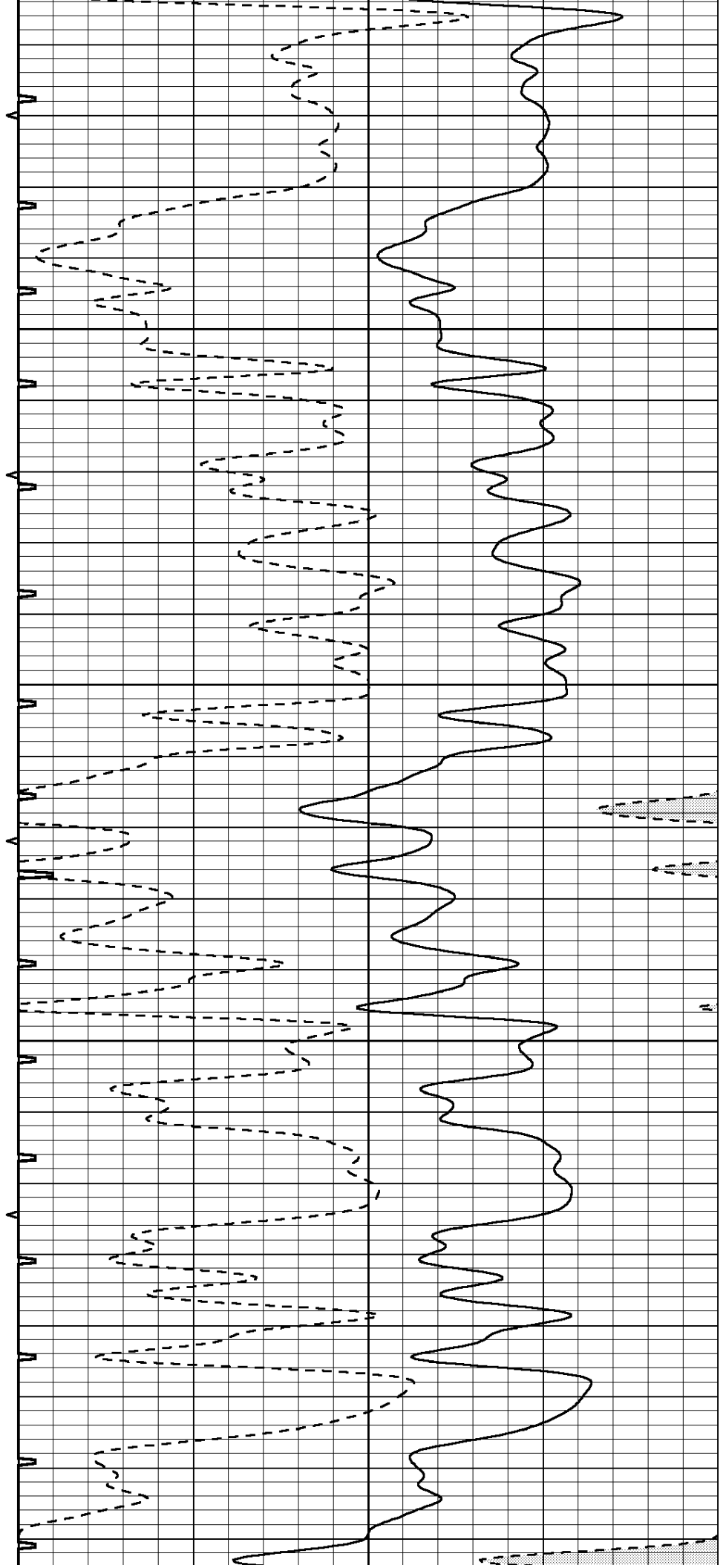


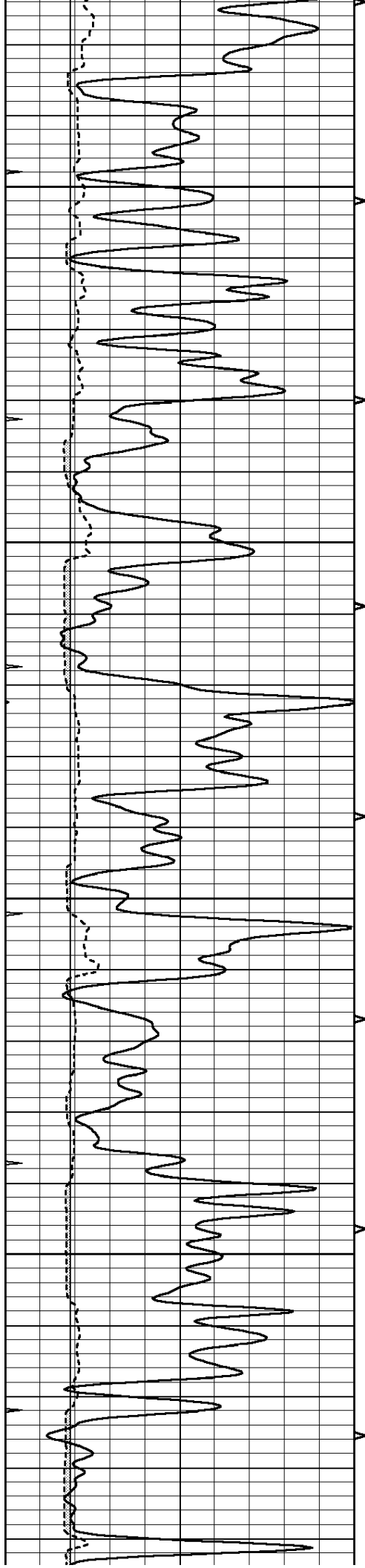
3500

3550

3600

3650



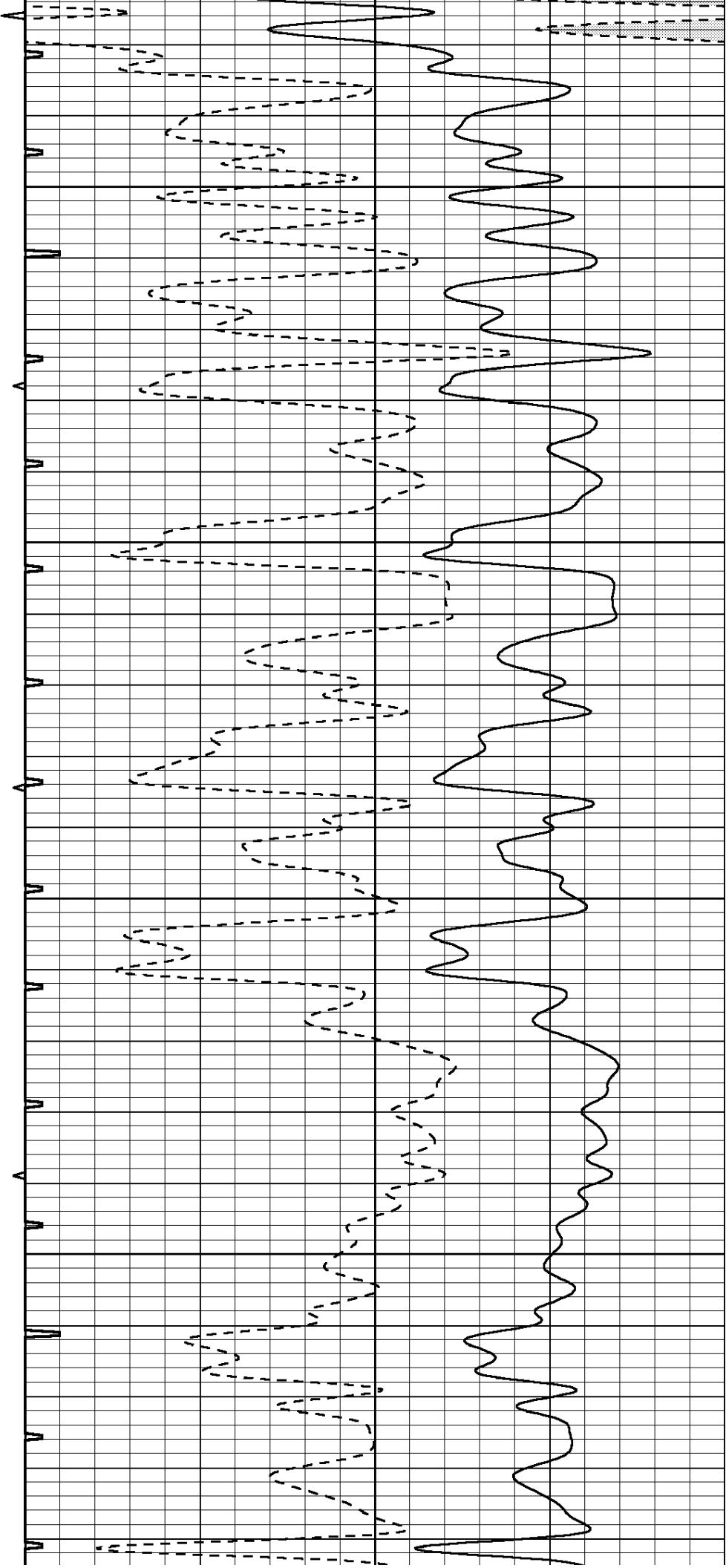


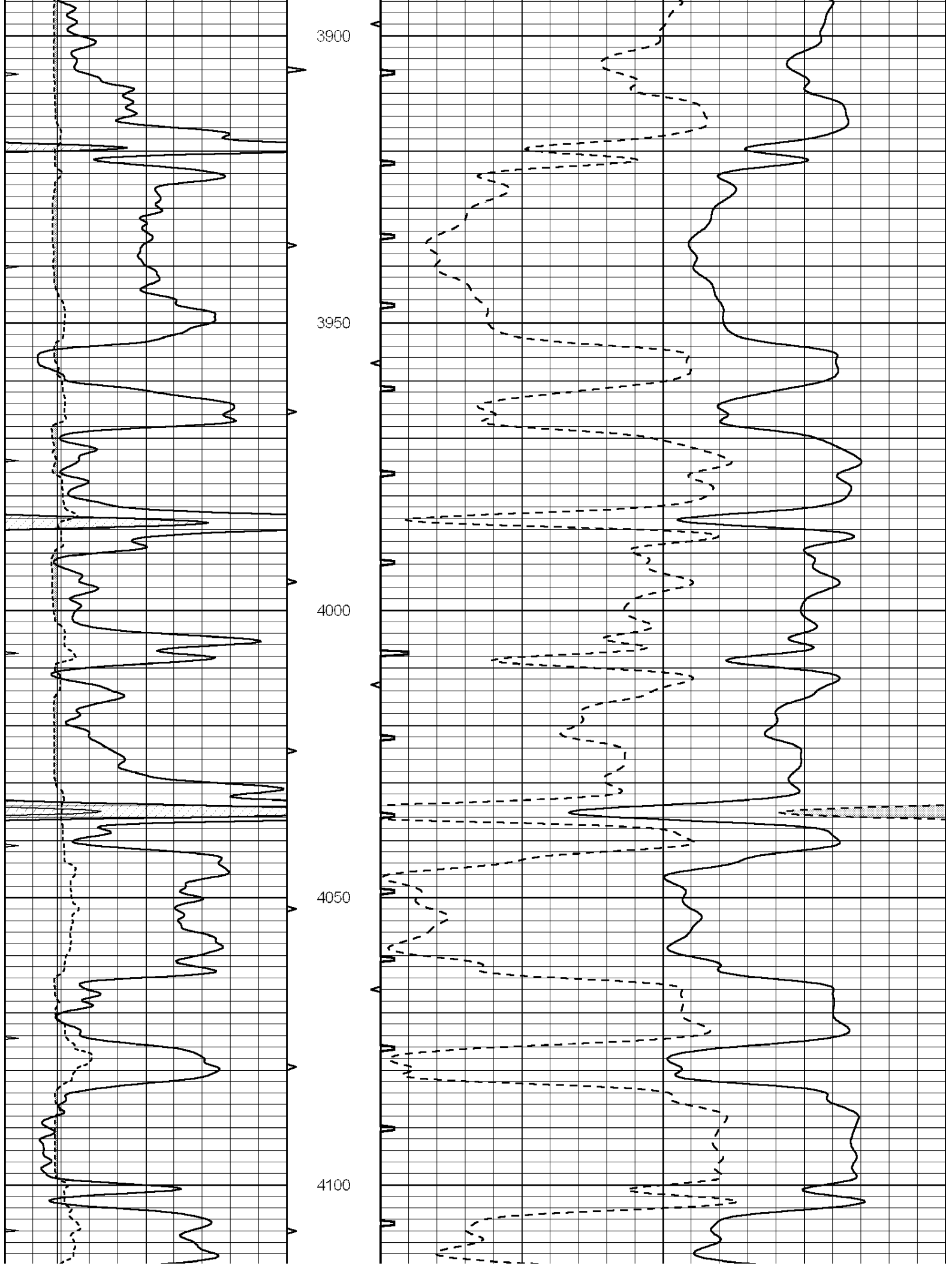
3700

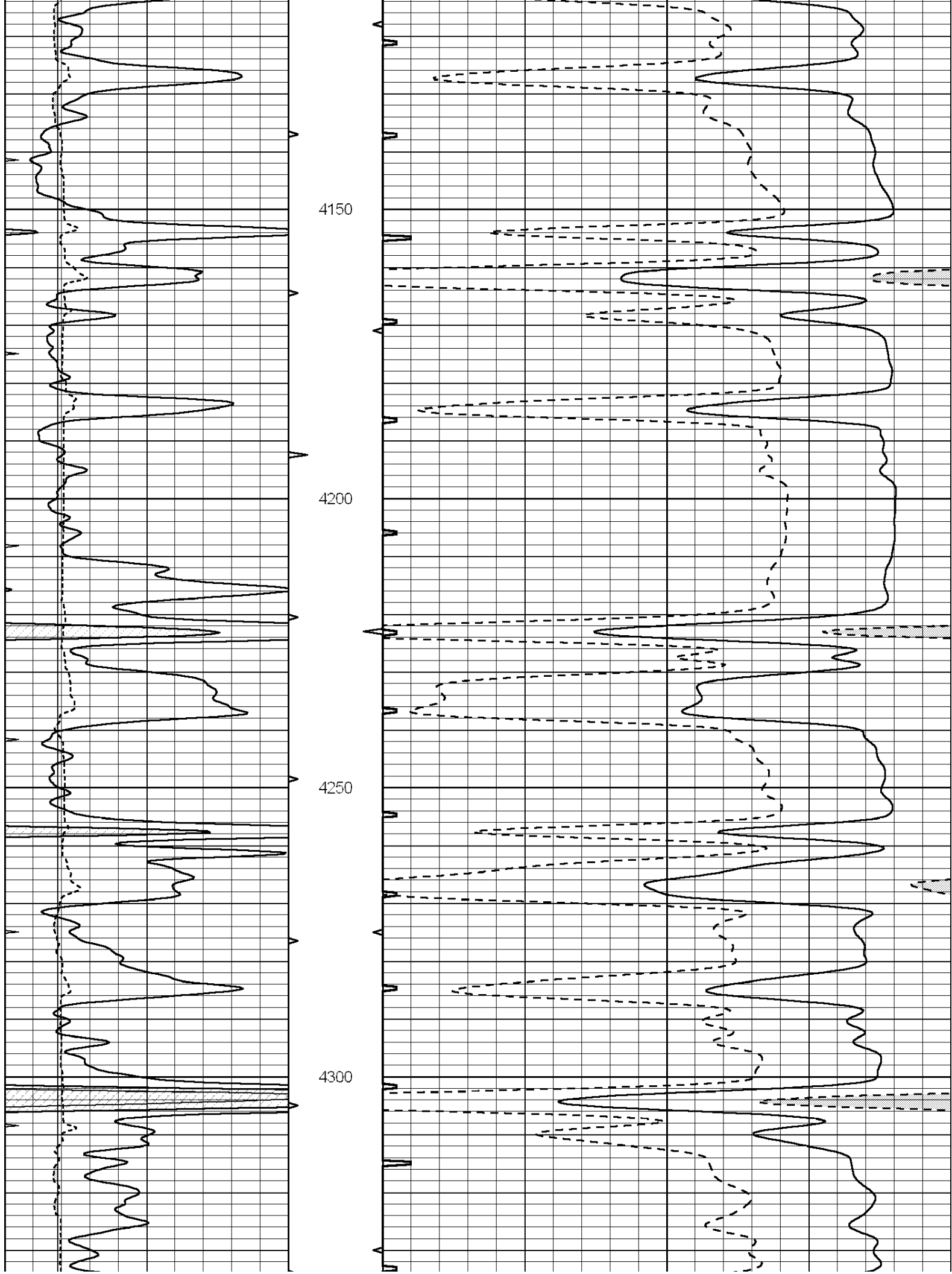
3750

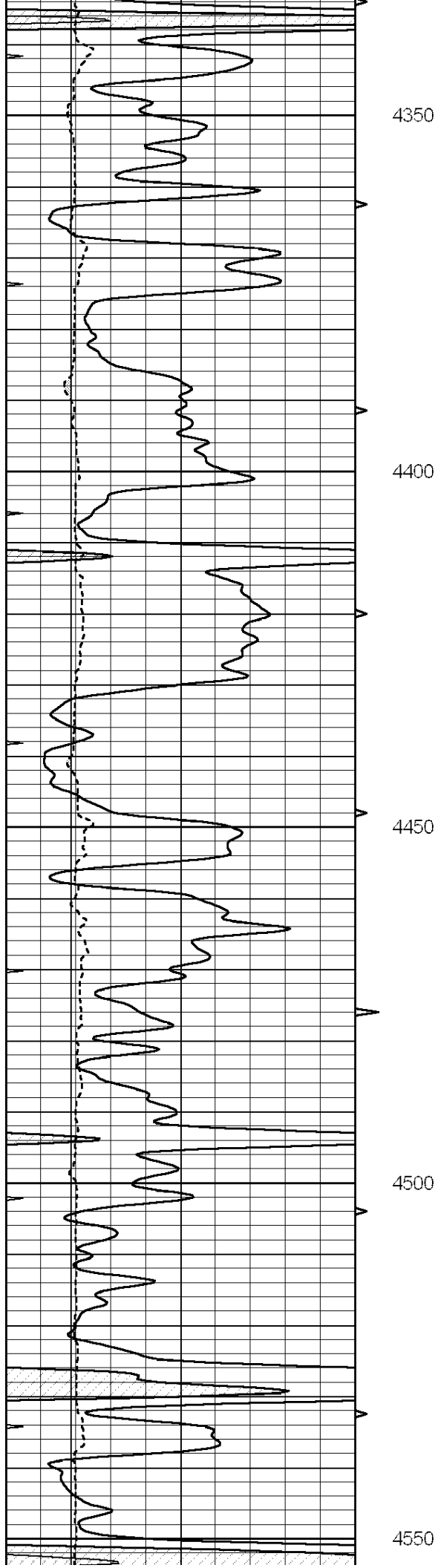
3800

3850









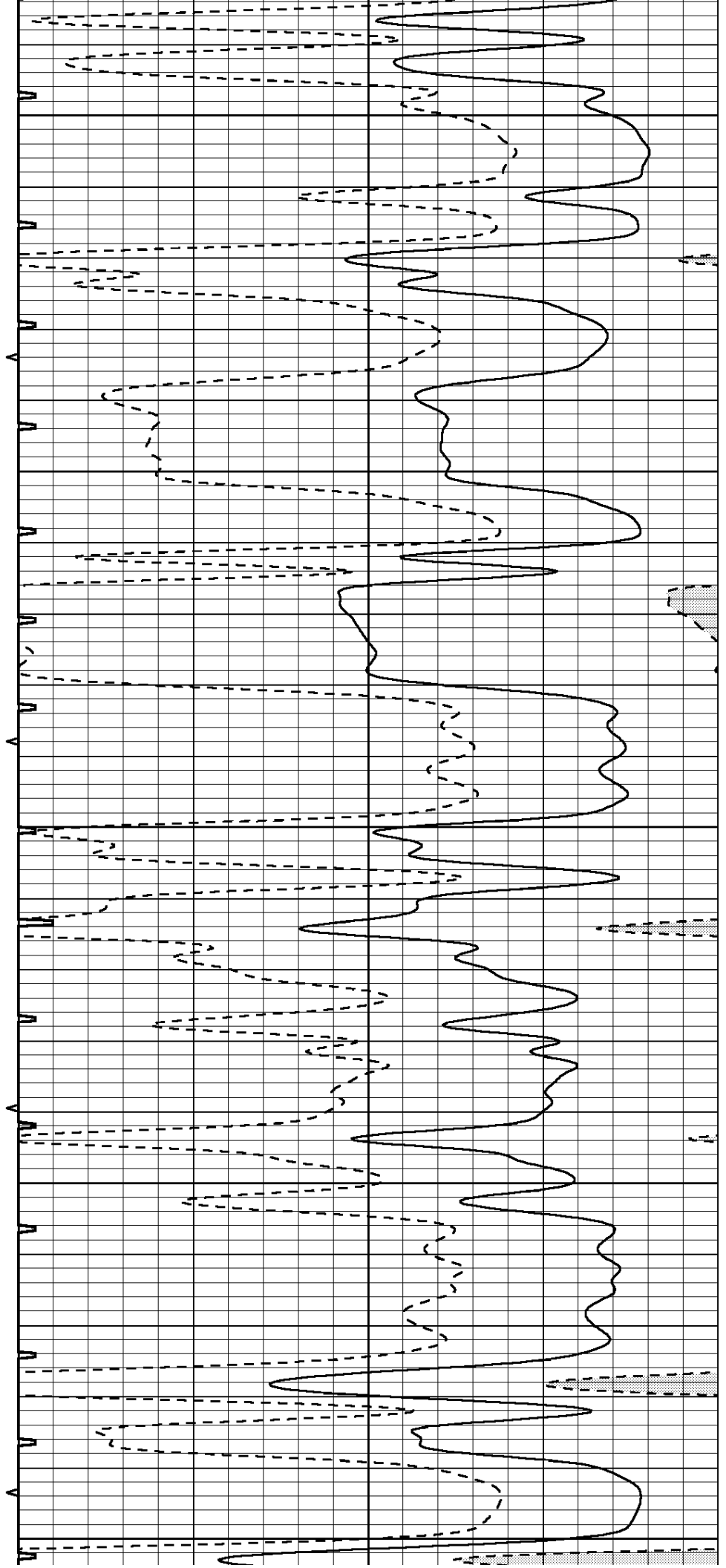
4350

4400

4450

4500

4550



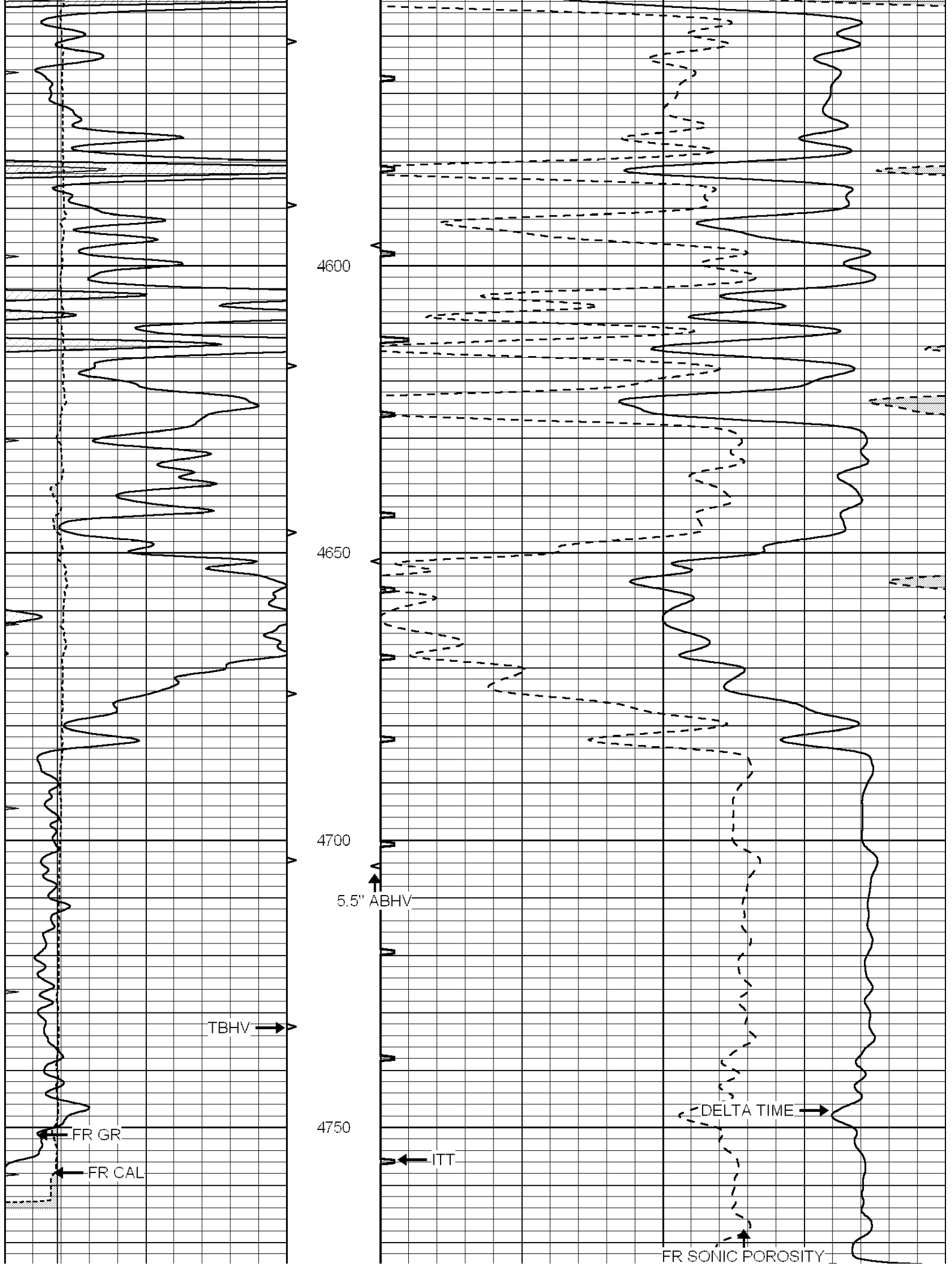
4350

4400

4450

4500

4550



LTD 4781

0	GAMMA RAY (GAPI)	150	ABHV	140	DELTA TIME (usec/ft)	40
6	CALIPER (in)	16	10 (ft3) 0	30	SONIC POROSITY (pu)	-10
0	MINMK	20	TBHV	0	ITT (msec)	20
			0 (ft3) 10			

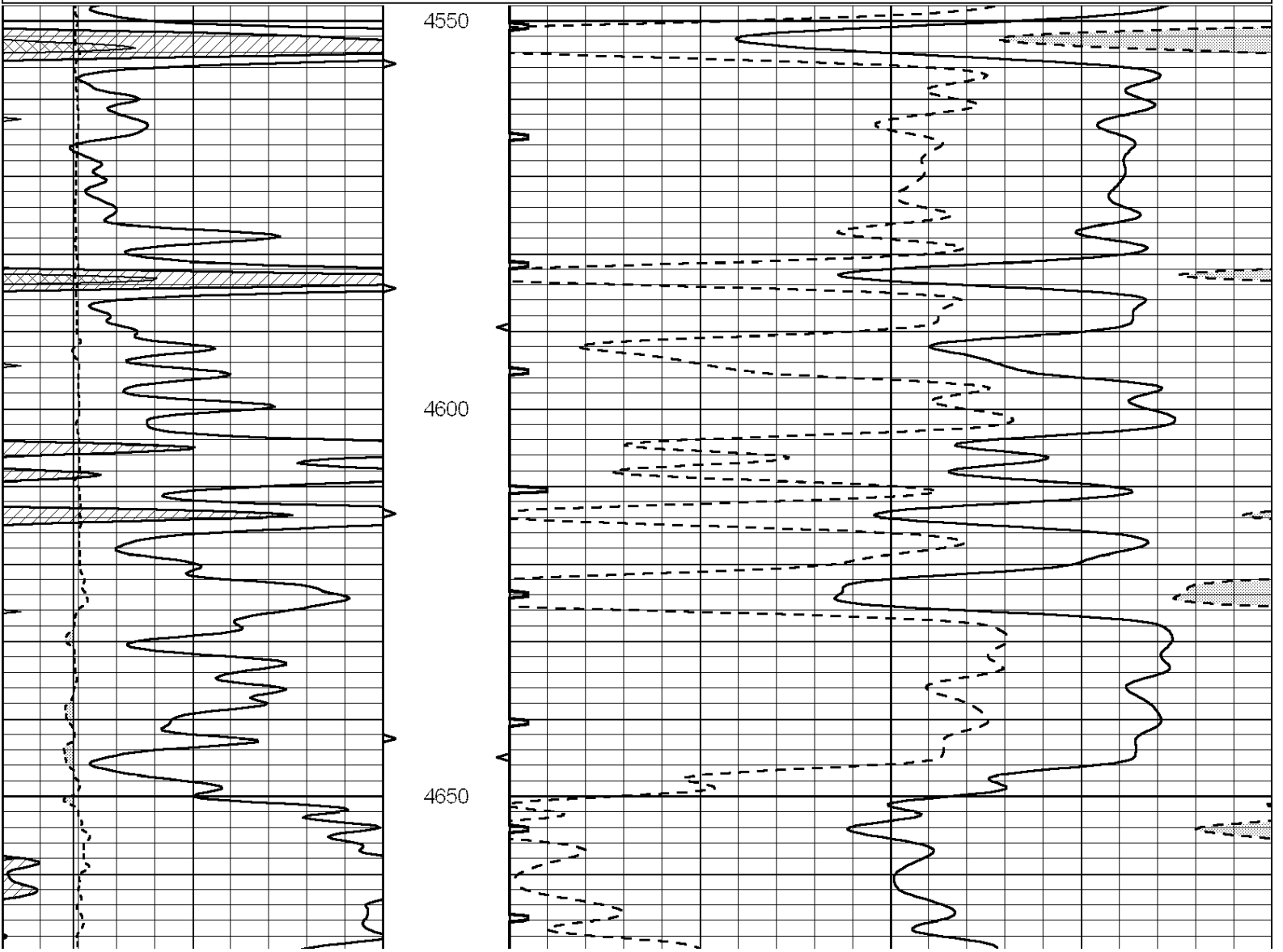


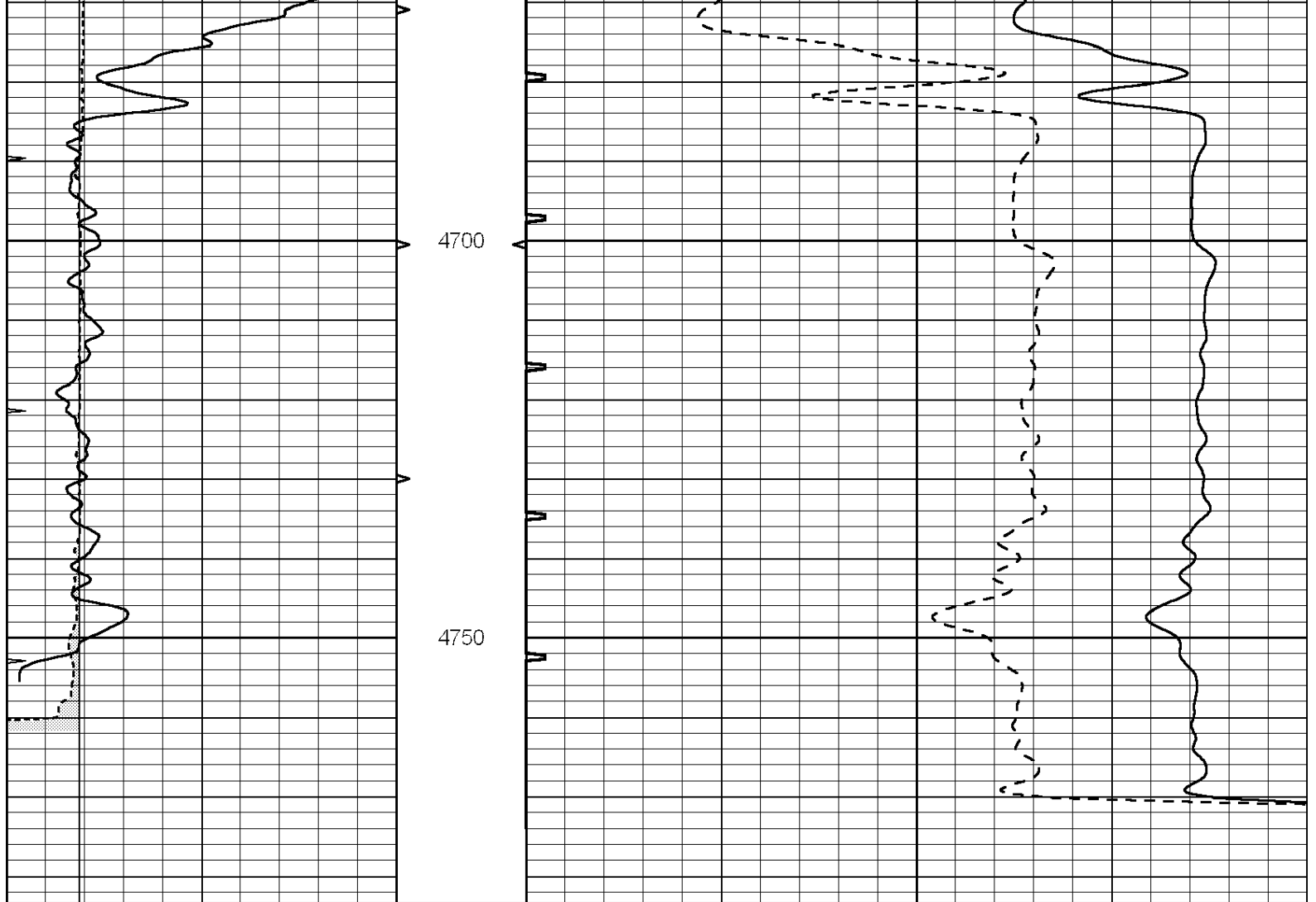
SUPERIOR  
Hays,  
Kansas

# REPEAT SECTION

Database File: 006298pe.db  
Dataset Pathname: pass5.4  
Presentation Format: slt  
Dataset Creation: Fri Feb 25 04:26:56 2011 by Calc Open-Cased 090629  
Charted by: Depth in Feet scaled 1:240

0	GAMMA RAY (GAPI)	150	ABHV	140	DELTA TIME (usec/ft)	40
6	CALIPER (in)	16	10 (ft3) 0	30	SONIC POROSITY (pu)	-10
0	MINMK	20	TBHV	0	ITT (msec)	20
			0 (ft3) 10			





0	GAMMA RAY (GAPI)	150	ABHV	140	DELTA TIME (usec/ft)	40	
6	CALIPER (in)	16	10 (ft3)	0	30	SONIC POROSITY (pu)	-10
0	MINMK	20	TBHV	0	ITT (msec)	20	
			0 (ft3)	10			