



**SUPERIOR**  
Hays,  
Kansas

**MICRO**  
LOG

Company JASON OIL COMPANY  
Well TEEL #2  
Field WILDCAT  
County GRAHAM  
State KANSAS

Company JASON OIL COMPANY  
Well TEEL #2  
Field WILDCAT  
County GRAHAM State KANSAS

Location: API # : 15-065-23704-0000  
1760' FSL & 750' FEL  
SEC 5 TWP 8S RGE 24W  
Permanent Datum GROUND LEVEL Elevation 2350  
Log Measured From KELLY BUSHING 8' A.G.L.  
Drilling Measured From KELLY BUSHING  
Elevation  
K.B. 2358  
D.F. 2356  
G.L. 2350

Date	12/11/10
Run Number	TWO
Depth Driller	3870
Depth Logger	3871
Bottom Logged Interval	3869
Top Log Interval	3300
Casing Driller	8 5/8"@228'
Casing Logger	230
Bit Size	7 7/8"
Type Fluid in Hole	CHEMICAL MUD
Density / Viscosity	9.0/63
pH / Fluid Loss	9.5/8.8
Source of Sample	FLOWLINE
Rim @ Meas. Temp	1.70@62F
Rmf @ Meas. Temp	1.28@62F
Rmc @ Meas. Temp	2.04@62F
Source of Rmf / Rmc	MEASUREMENT
Rim @ BHT	.917@115F
Time Circulation Stopped	3.5 HOURS
Time Logger on Bottom	12:15 A.M.
Maximum Recorded Temperature	115F
Equipment Number	0836
Location	HAYS, KANSAS
Recorded By	JEFF LUEBBERS
Witnessed By	JEFF LAWLER
	JIM SCHOENBERGER

<<< Fold Here >>>

All interpretations are opinions based on inferences from electrical or other measurements and we cannot and do not guarantee the accuracy or correctness of any interpretation, and we shall not, except in the case of gross or willful negligence on our part, be liable or responsible for any loss, costs, damages, or expenses incurred or sustained by anyone resulting from any interpretation made by any of our officers, agents or employees. These interpretations are also subject to our general terms and conditions set out in our current Price Schedule.

**Comments**

THANK YOU FOR USING SUPERIOR WELL SERVICE HAYS, KANSAS (785) 628-6395  
DIRECTIONS  
PENOKEE, KS. 1W. ON HWY 24 TO "190 AVE.", 2N., 1W., 1/2S. INTO@OLD TANK

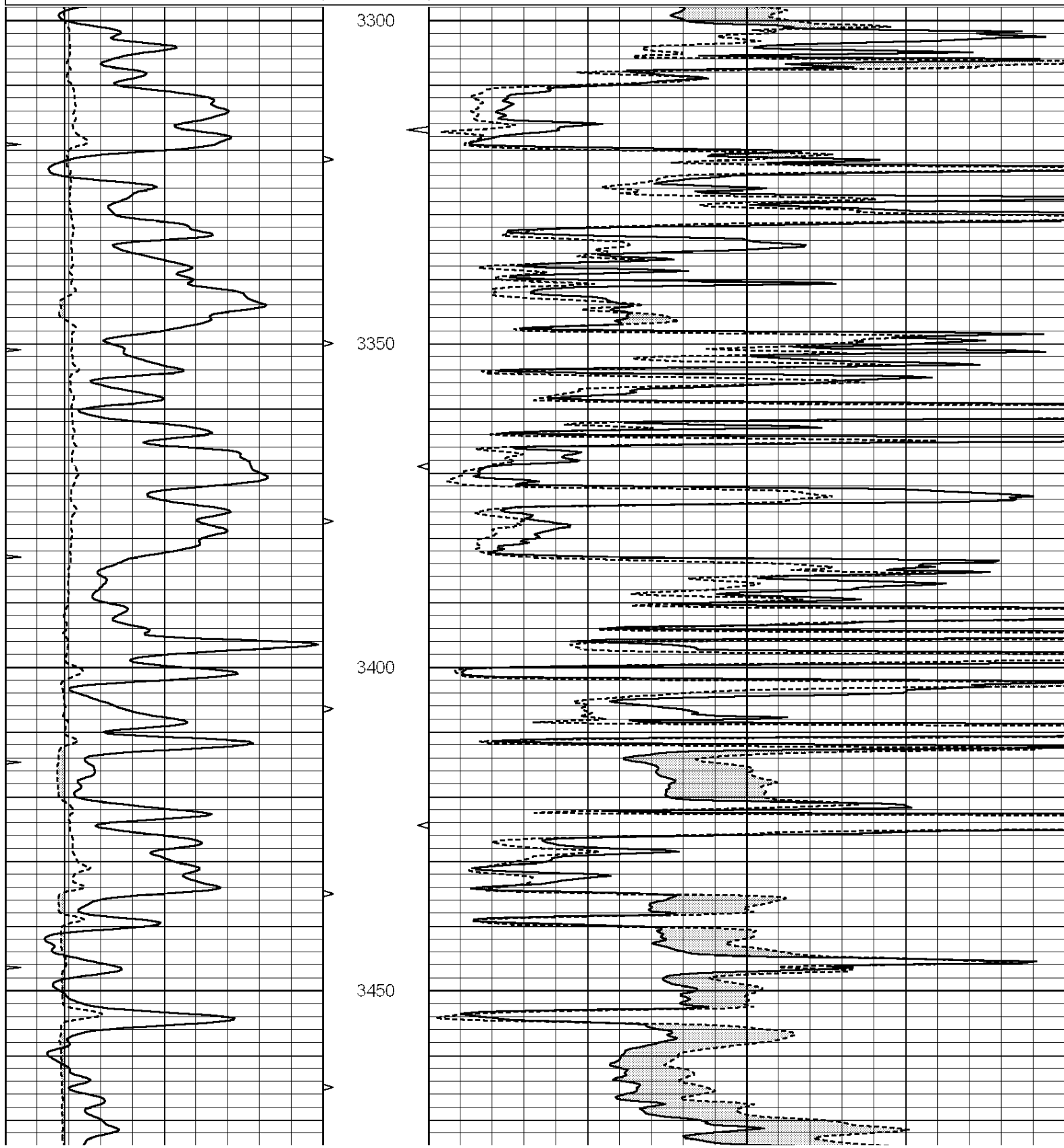


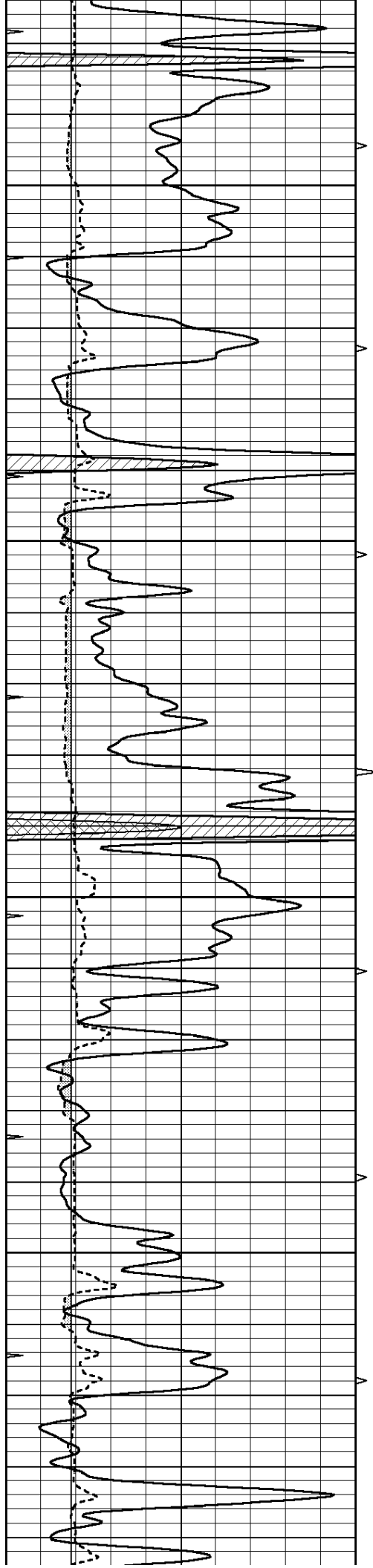
**SUPERIOR**  
Hays,  
Kansas

**MAIN SECTION**

Database File: 006253rag.db  
 Dataset Pathname: pass6.1  
 Presentation Format: micro  
 Dataset Creation: Sun Dec 12 02:29:34 2010 by Calc Open-Cased 090629  
 Charted by: Depth in Feet scaled 1:240

0	GAMMA RAY (GAPI)	150	ABHV	0	MEL1.5 (Ohm-m)	40
6	CALIPER (in)	16	10 (ft3)	0 0	MEL2.0 (Ohm-m)	40
0	MINMK	20	TBHV			
			0 (ft3)	10		



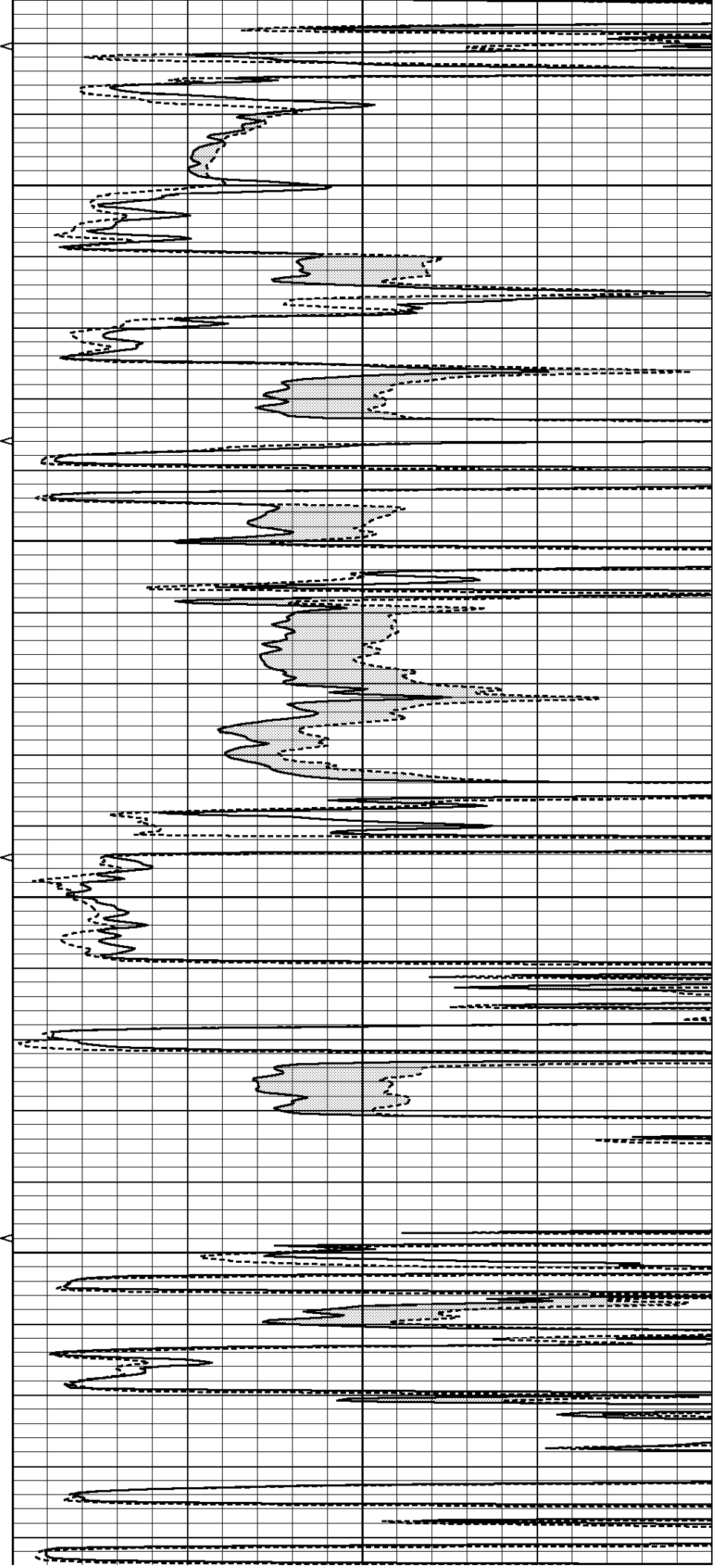


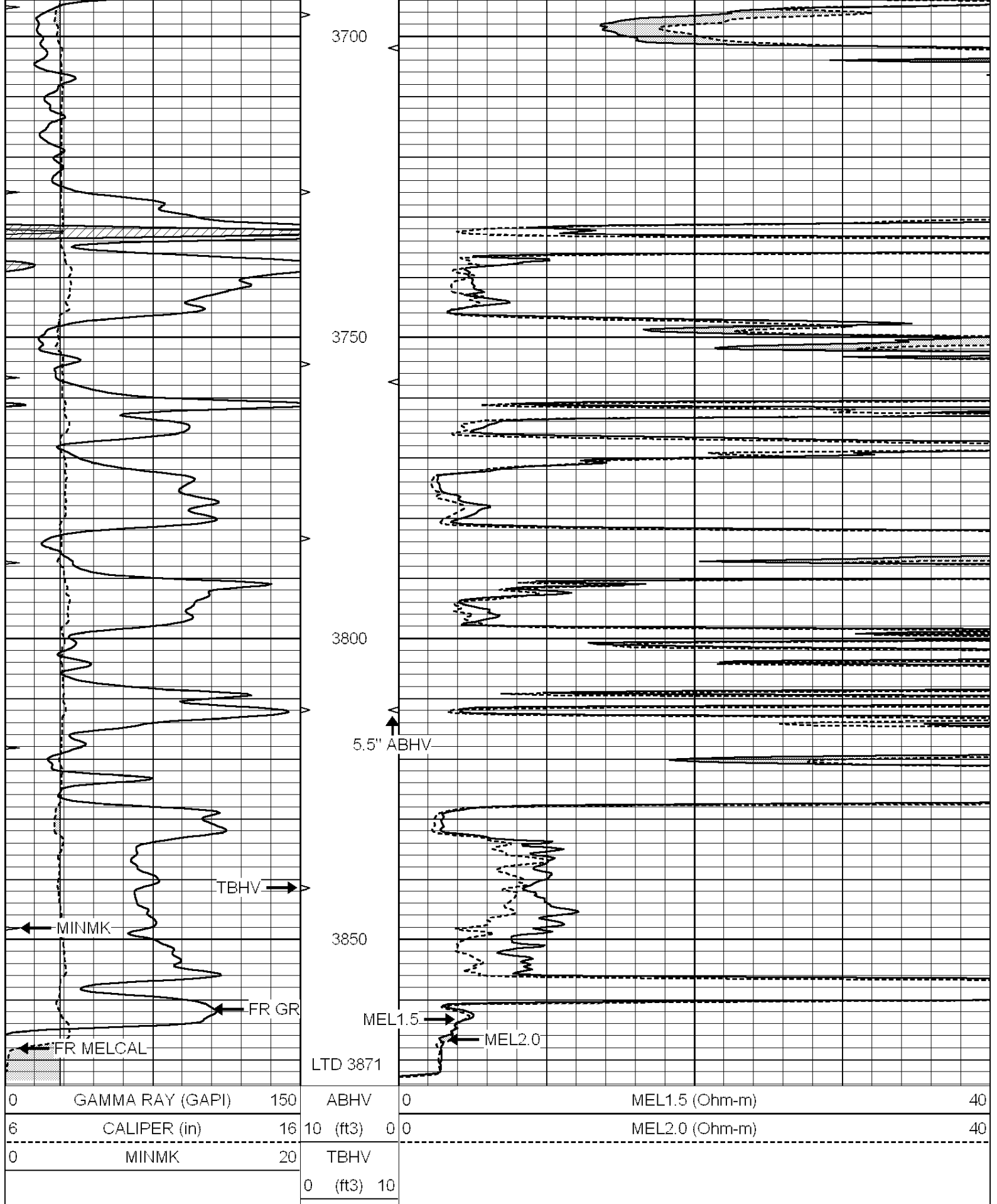
3500

3550

3600

3650



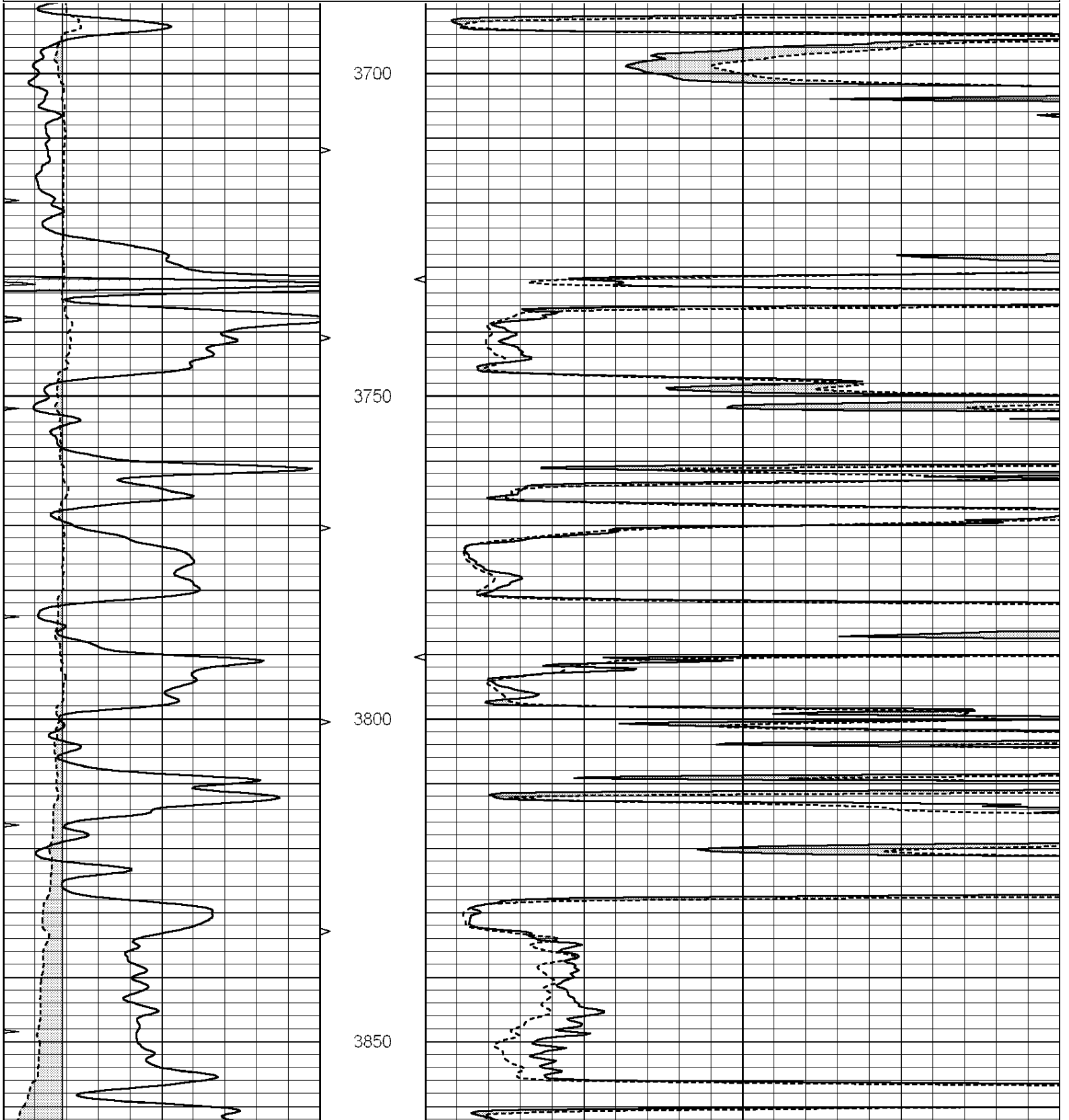


SUPERIOR  
Hays,

# REPEAT SECTION

Database File: 006253rag.db  
 Dataset Pathname: pass5.1  
 Presentation Format: micro  
 Dataset Creation: Sun Dec 12 02:04:21 2010 by Calc Open-Cased 090629  
 Charted by: Depth in Feet scaled 1:240

0	GAMMA RAY (GAPI)	150	ABHV	0	MEL1.5 (Ohm-m)	40
6	CALIPER (in)	16	10 (ft3)	0	MEL2.0 (Ohm-m)	40
0	MINMK	20	TBHV			
			0 (ft3)	10		



0	GAMMA RAY (GAPI)	150	ABHV	0	MEL1.5 (Ohm-m)	40
6	CALIPER (in)	16	10 (ft3)	0	MEL2.0 (Ohm-m)	40
0	MINMK	20	TBHV			
			0 (ft3)	10		

### Calibration Report

Database File: 006253rag.db  
 Dataset Pathname: pass6.1  
 Dataset Creation: Sun Dec 12 02:29:34 2010 by Calc Open-Cased 090629

#### MICRO Calibration Report

Serial Number:	MICRO5	
Tool Model:	PROBE	
Performed:	Fri Dec 10 21:16:32 2010	
Caliper Calibration:	Gain=2.991	Offset=-0.881
References	Low Cal	High Cal
Readings	6.400	13.000
	2.435	4.641
1.5" Calibration:	Gain=40.000	Offset=-1.300
References	Low Cal	High Cal
Readings	0.000	20.000
	0.008	0.991
2" Calibration:	Gain=44.000	Offset=-2.000
References	Low Cal	High Cal
Readings	0.000	20.000
	0.014	0.905

#### Gamma Ray Calibration Report

Serial Number:	GR3	
Tool Model:	OPEN	
Performed:	Sun Dec 12 02:05:36 2010	
Calibrator Value:	200.0	GAPI
Background Reading:	3.0	cps
Calibrator Reading:	186.0	cps
Sensitivity:	0.9000	GAPI/cps