



**SUPERIOR**  
Hays,  
Kansas

**SONIC**  
LOG

Company MULL DRILLING COMPANY, INC.  
Well #1-22 CORDER - HENNING UNIT  
Field OSGOOD SOUTHEAST  
County NESS  
State KANSAS

Company MULL DRILLING COMPANY, INC.  
Well #1-22 CORDER - HENNING UNIT  
Field OSGOOD SOUTHEAST  
County NESS State KANSAS

Location: API # : 15-135-25207-0000  
2534' FNL & 1003' FEL  
SEC 22 TWP 16S RGE 23W  
Permanent Datum GROUND LEVEL Elevation 2480  
Log Measured From KELLY BUSHING 5' A.G.L.  
Drilling Measured From KELLY BUSHING  
Elevation  
K.B. 2485  
D.F. 2483  
G.L. 2480

Date	2/5/11
Run Number	TWO
Depth Driller	4575
Depth Logger	4572
Bottom Logged Interval	4559
Top Log Interval	200
Casing Driller	8 5/8"@233'
Casing Logger	234
Bit Size	7 7/8"
Type Fluid in Hole	CHEMICAL MUD
Density / Viscosity	9.6/62
pH / Fluid Loss	9.5/6.8
Source of Sample	FLOWLINE
Rim @ Meas. Temp	.700@80F
Rmf @ Meas. Temp	.525@80F
Rmc @ Meas. Temp	.840@80F
Source of Rmf / Rmc	MEASUREMENT
Rim @ BHT	.463@121F
Time Circulation Stopped	4 HOURS
Time Logger on Bottom	8:15 P.M.
Maximum Recorded Temperature	121F
Equipment Number	0836
Location	HAYS, KANSAS
Recorded By	JEFF LUEBBERS
Witnessed By	KEVIN KESSLER

<<< Fold Here >>>

All interpretations are opinions based on inferences from electrical or other measurements and we cannot and do not guarantee the accuracy or correctness of any interpretation, and we shall not, except in the case of gross or willful negligence on our part, be liable or responsible for any loss, costs, damages, or expenses incurred or sustained by anyone resulting from any interpretation made by any of our officers, agents or employees. These interpretations are also subject to our general terms and conditions set out in our current Price Schedule.

**Comments**

THANK YOU FOR USING SUPERIOR WELL SERVICE HAYS, KANSAS (785) 628-6395  
DIRECTIONS  
BROWNELL, KS. 6W. ON HWY 4 TO "RD. U", 1/2N., E. INTO

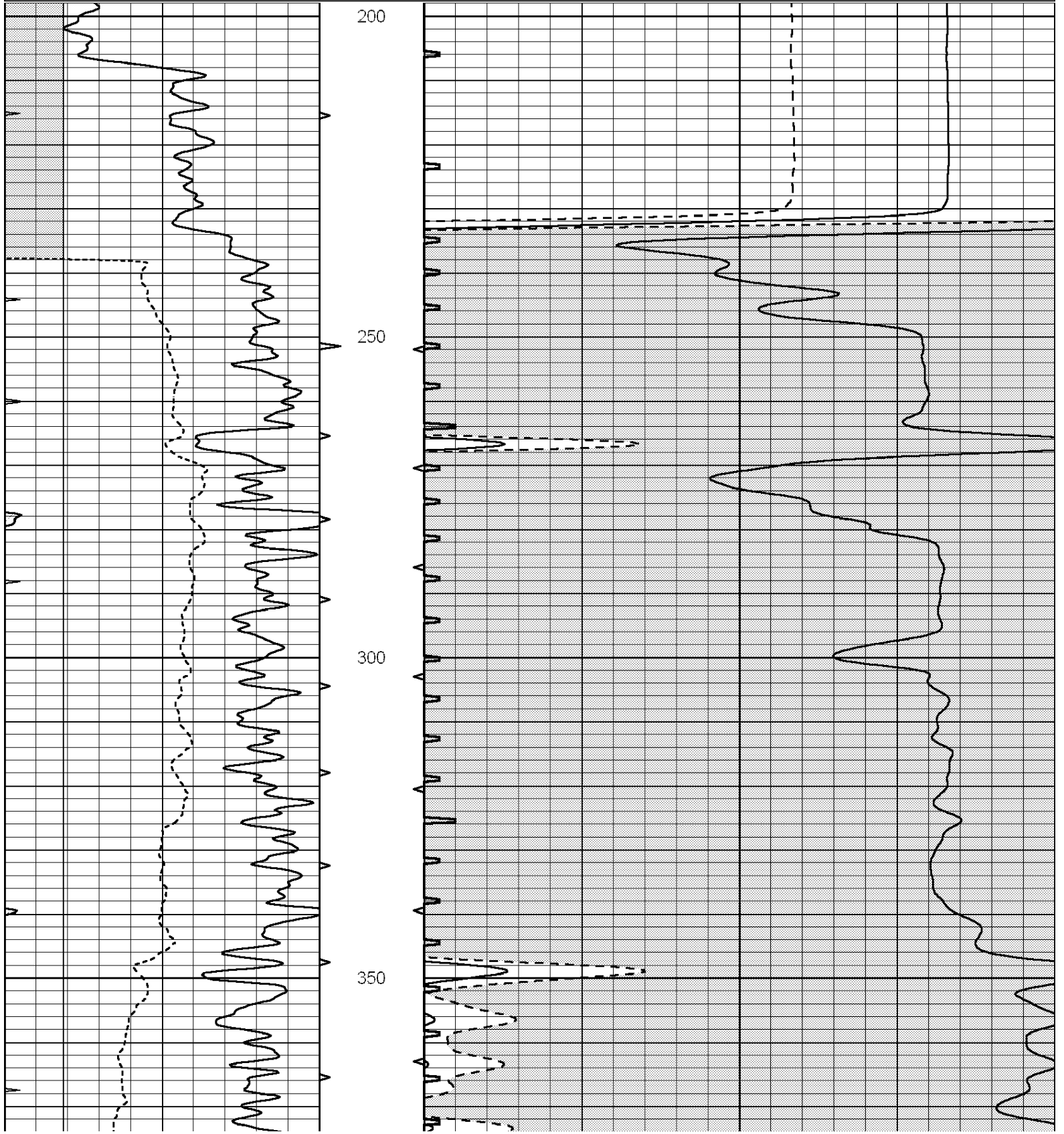


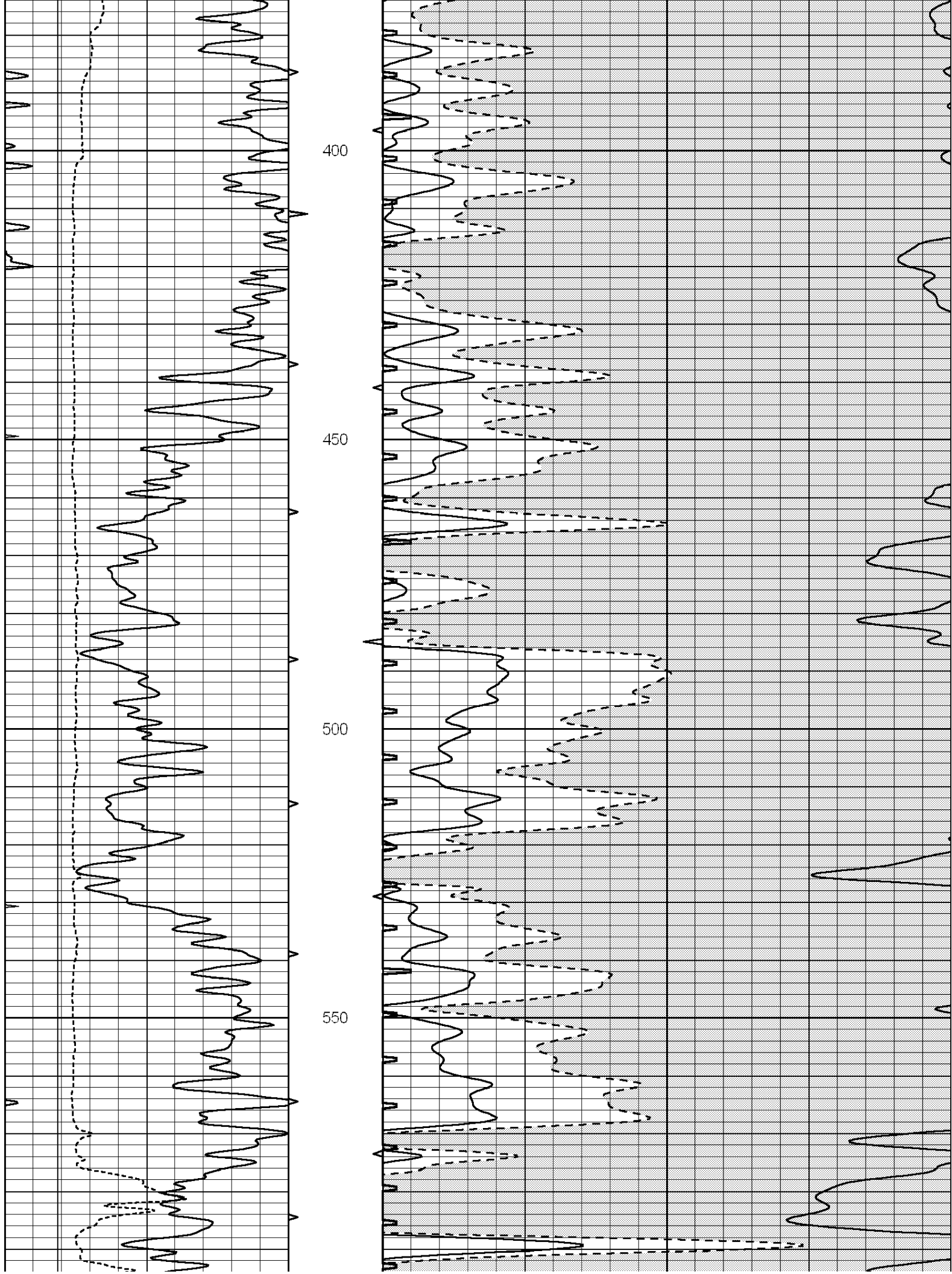
**SUPERIOR**  
Hays,  
Kansas

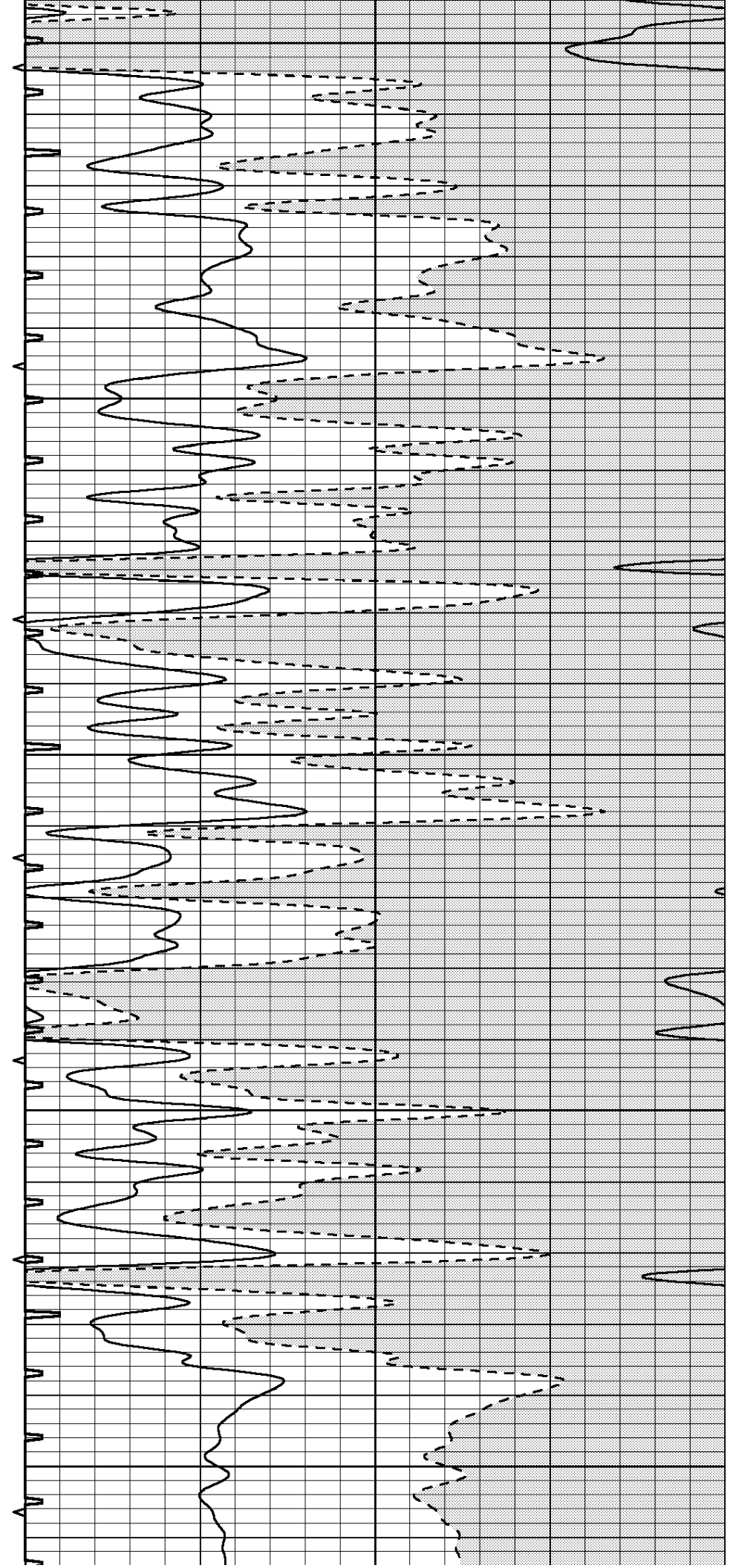
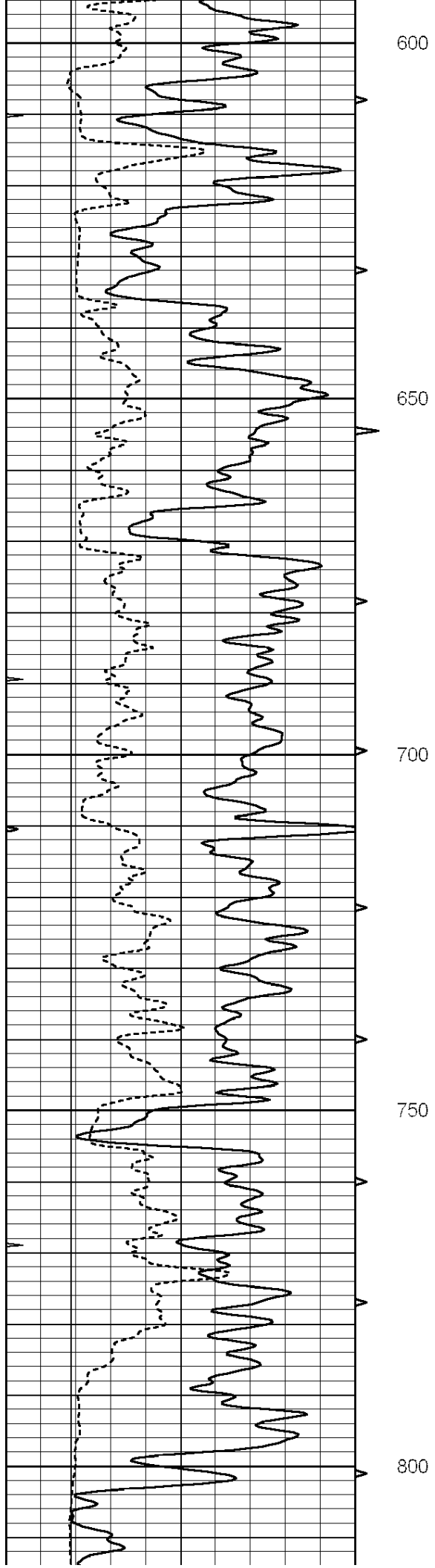
**MAIN SECTION**

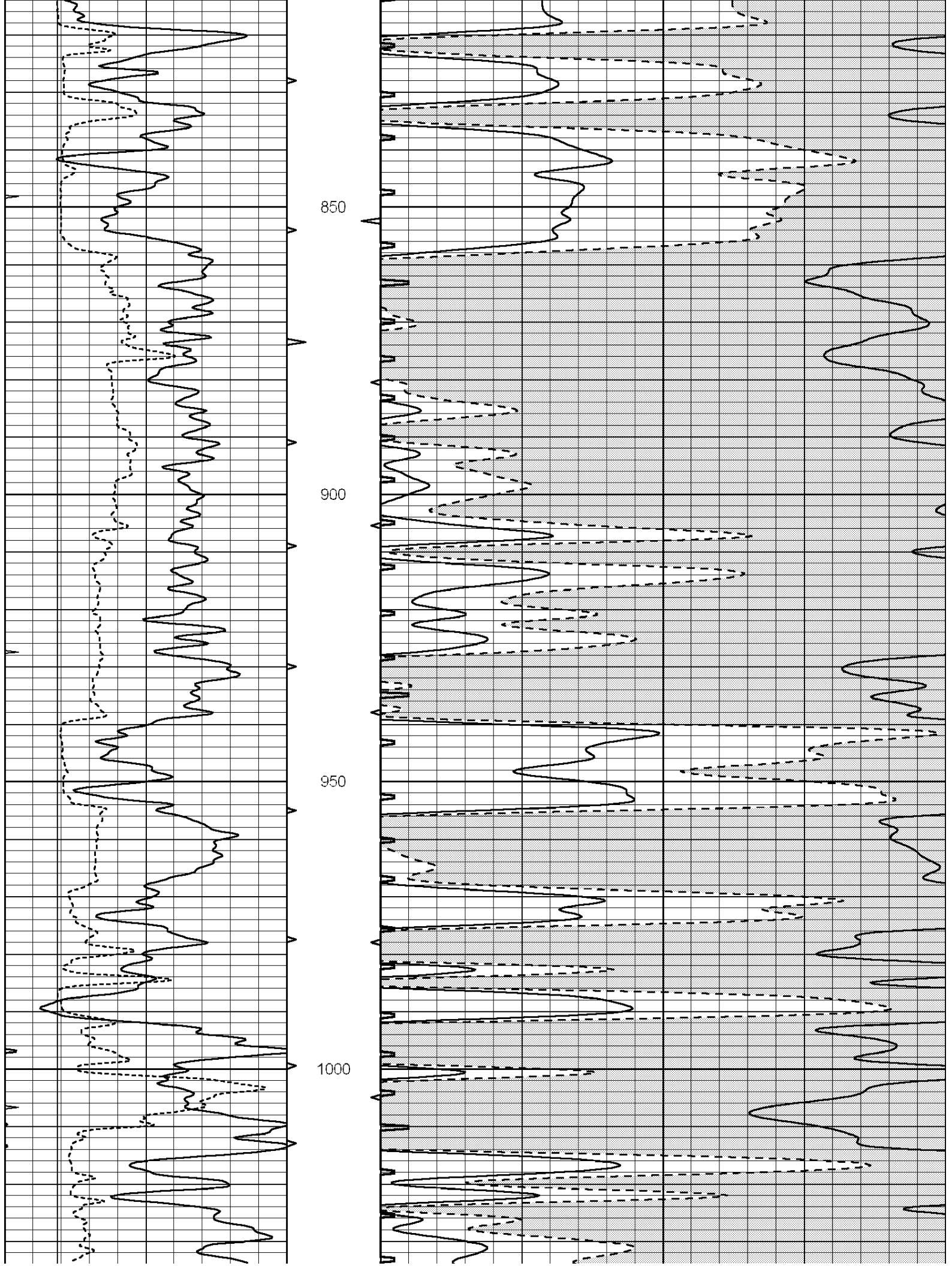
Database File: 006288pe.db  
 Dataset Pathname: pass6.3  
 Presentation Format: slt  
 Dataset Creation: Wed Feb 16 00:05:45 2011 by Calc Open-Cased 090629  
 Charted by: Depth in Feet scaled 1:240

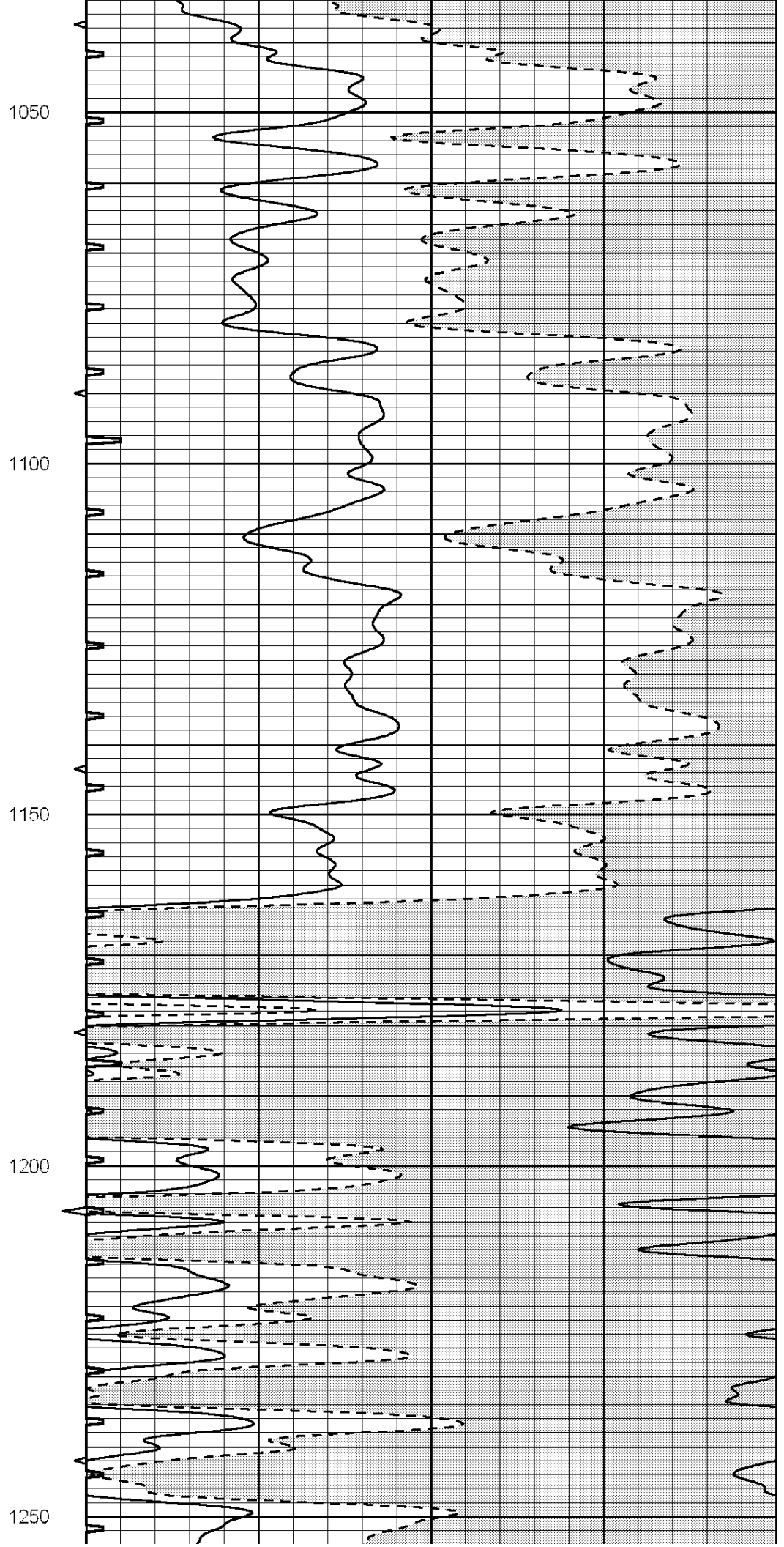
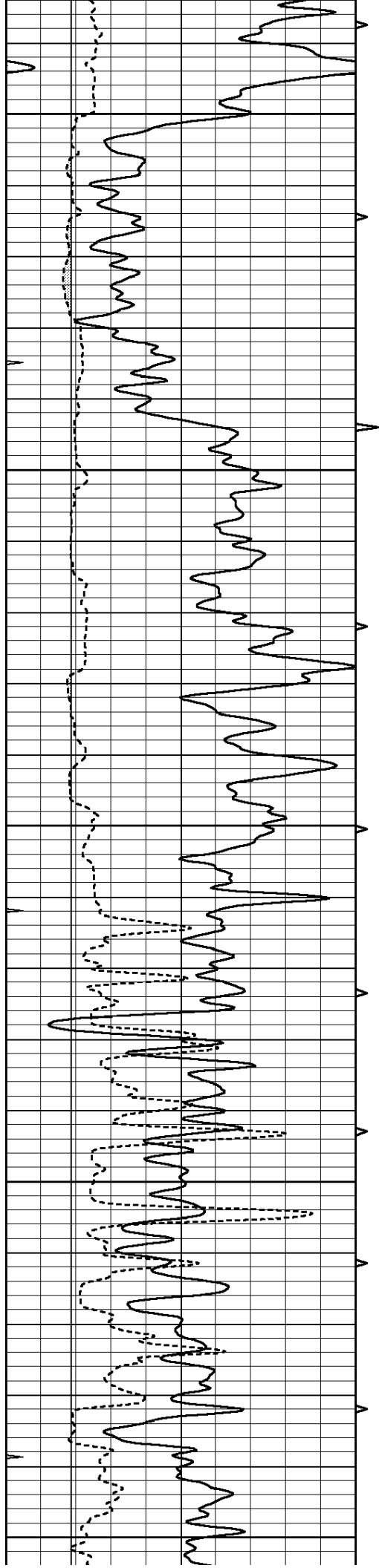
0	GAMMA RAY (GAPI)	150	ABHV	140	DELTA TIME (usec/ft)	40
6	CALIPER (in)	16	10 (ft3)	0	30	SONIC POROSITY (pu)
0	MINMK	20	TBHV	0	ITT (msec)	20
			0 (ft3)	10		

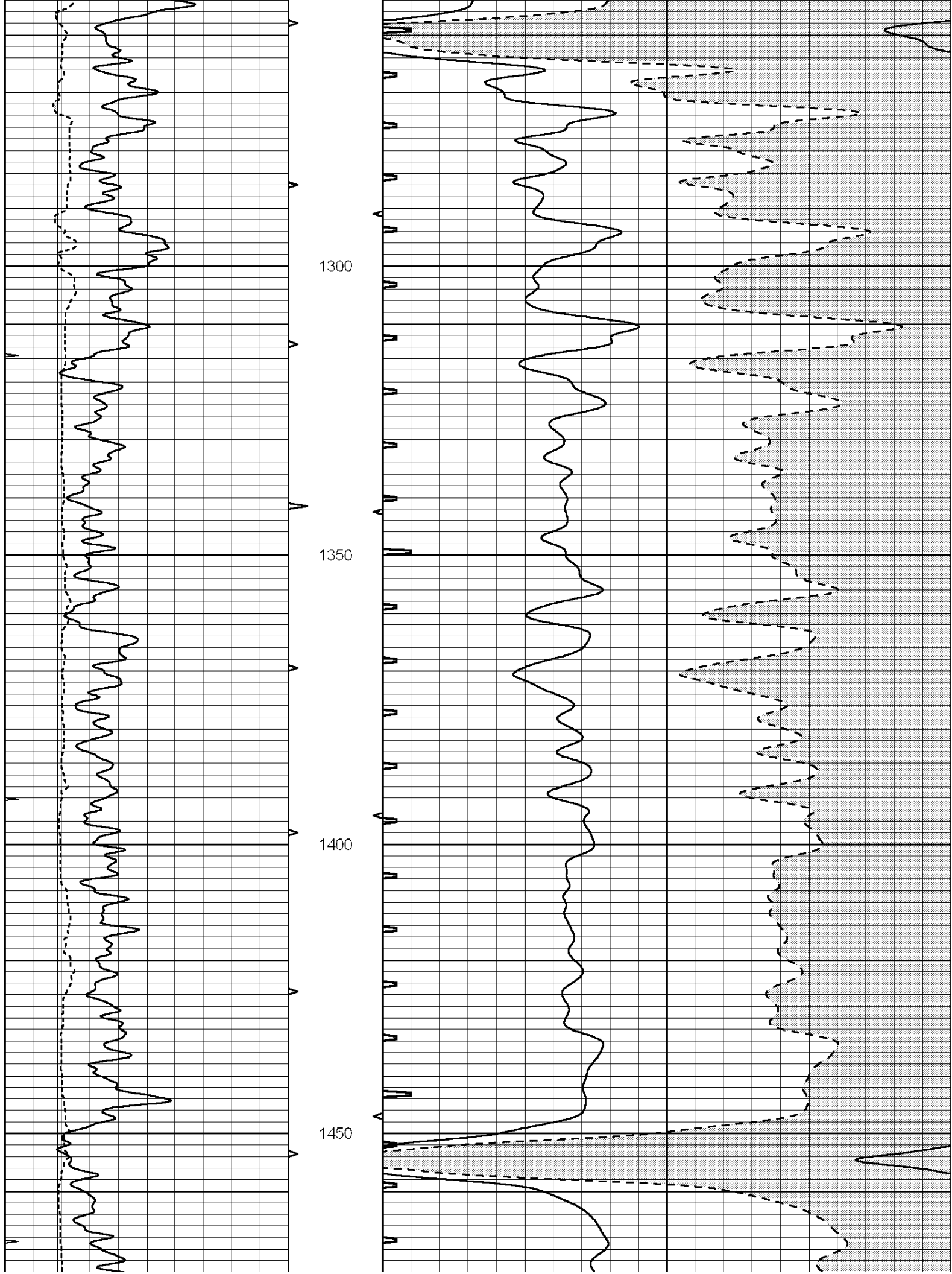


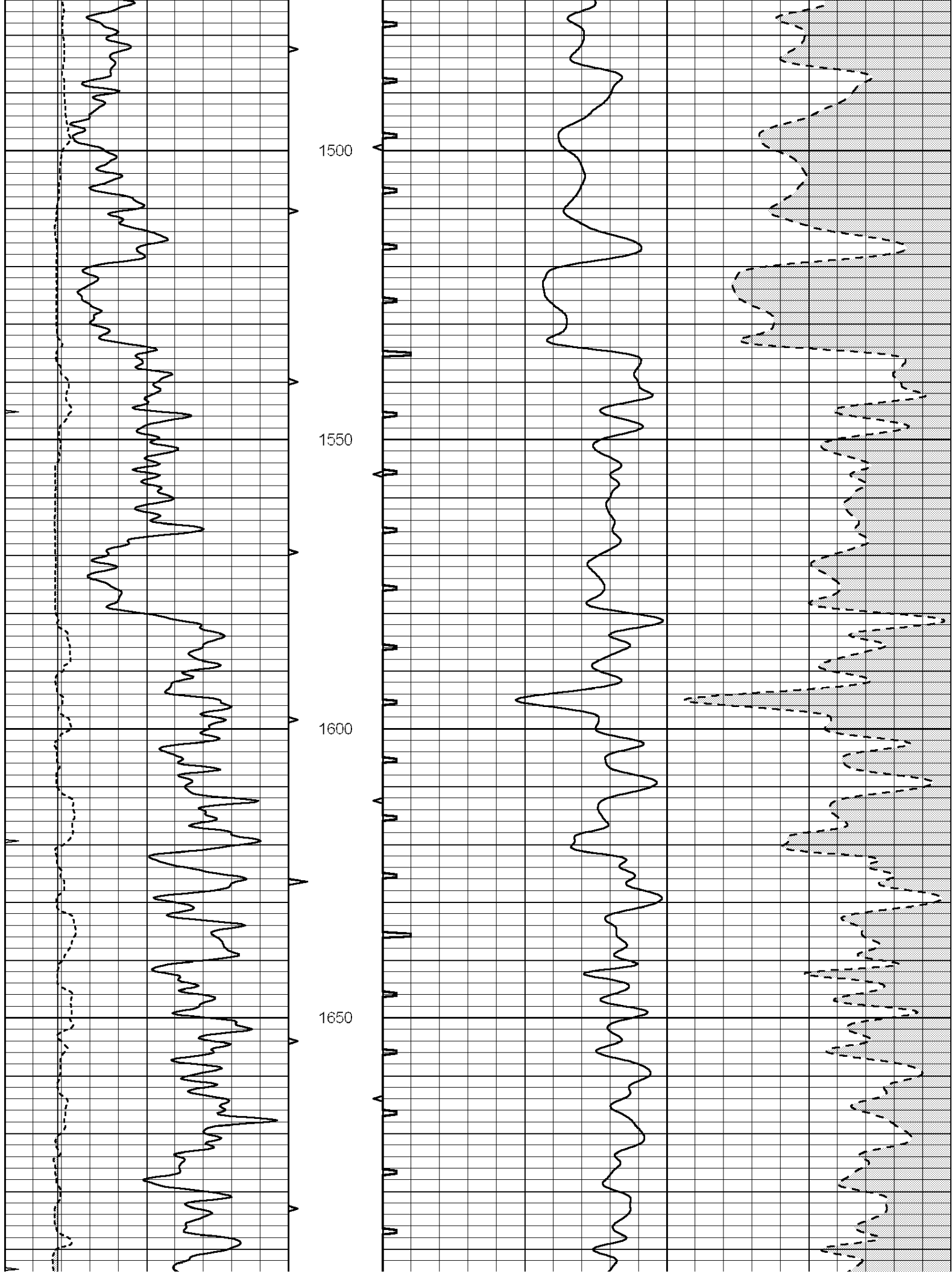


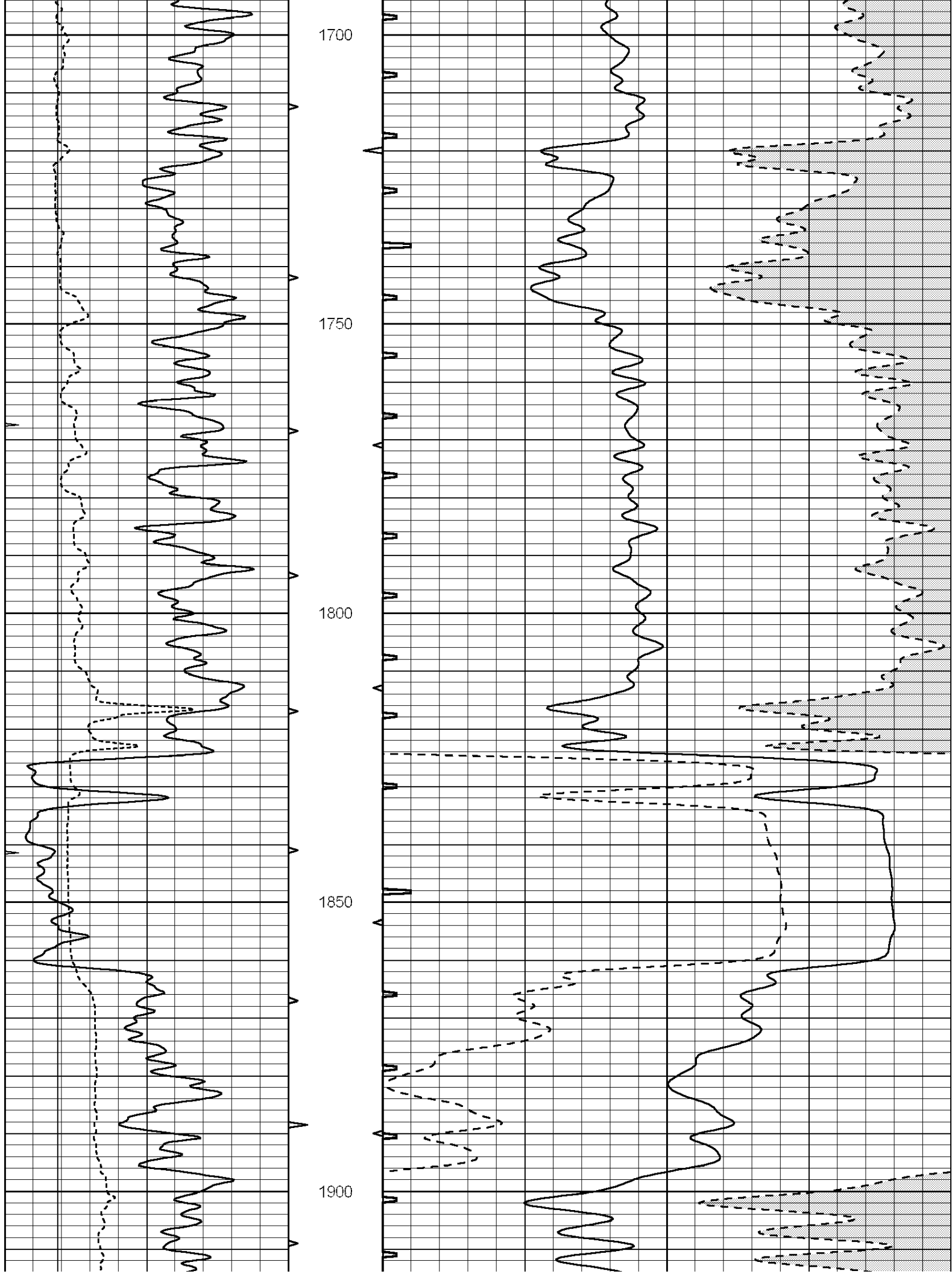


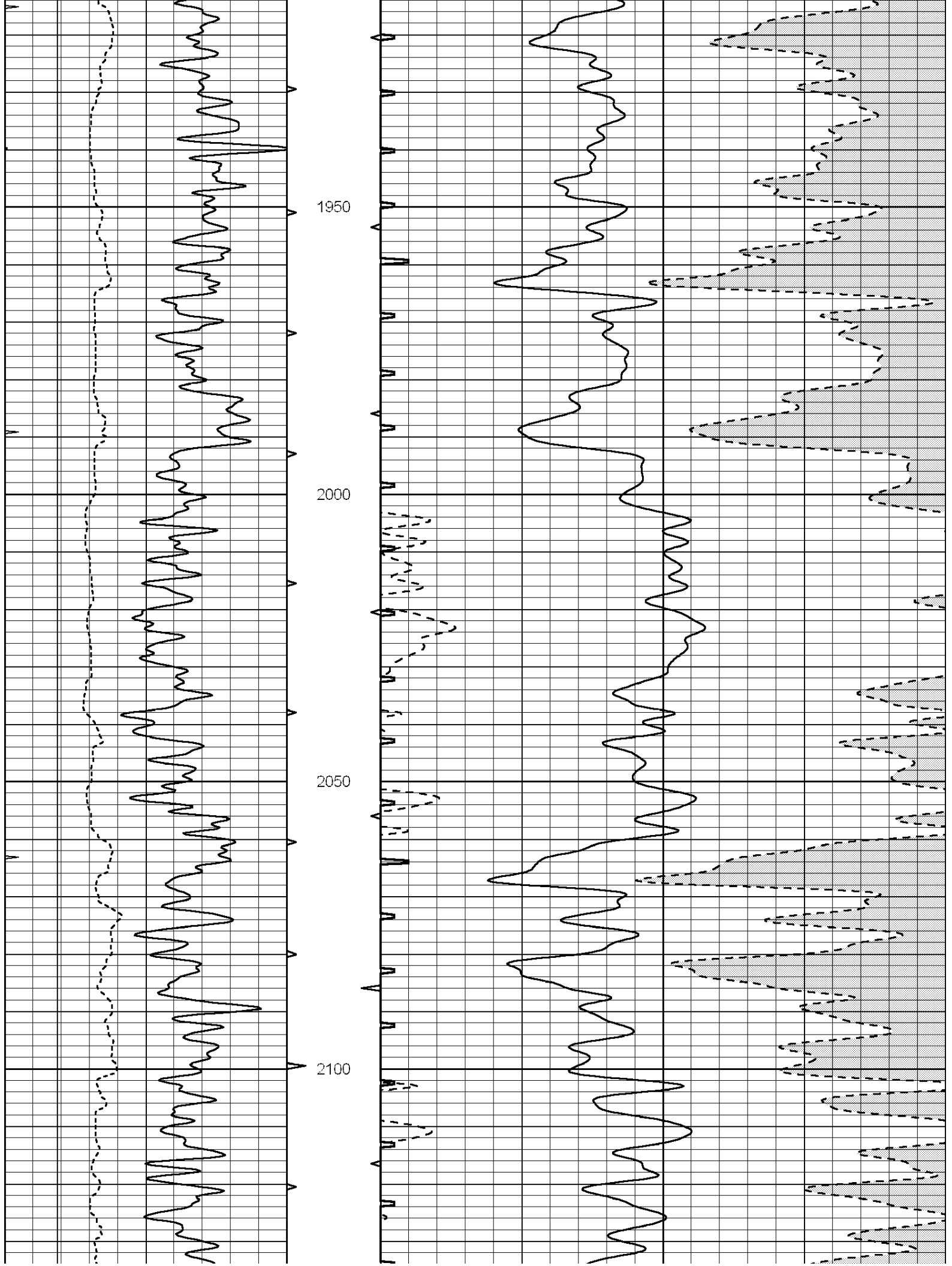


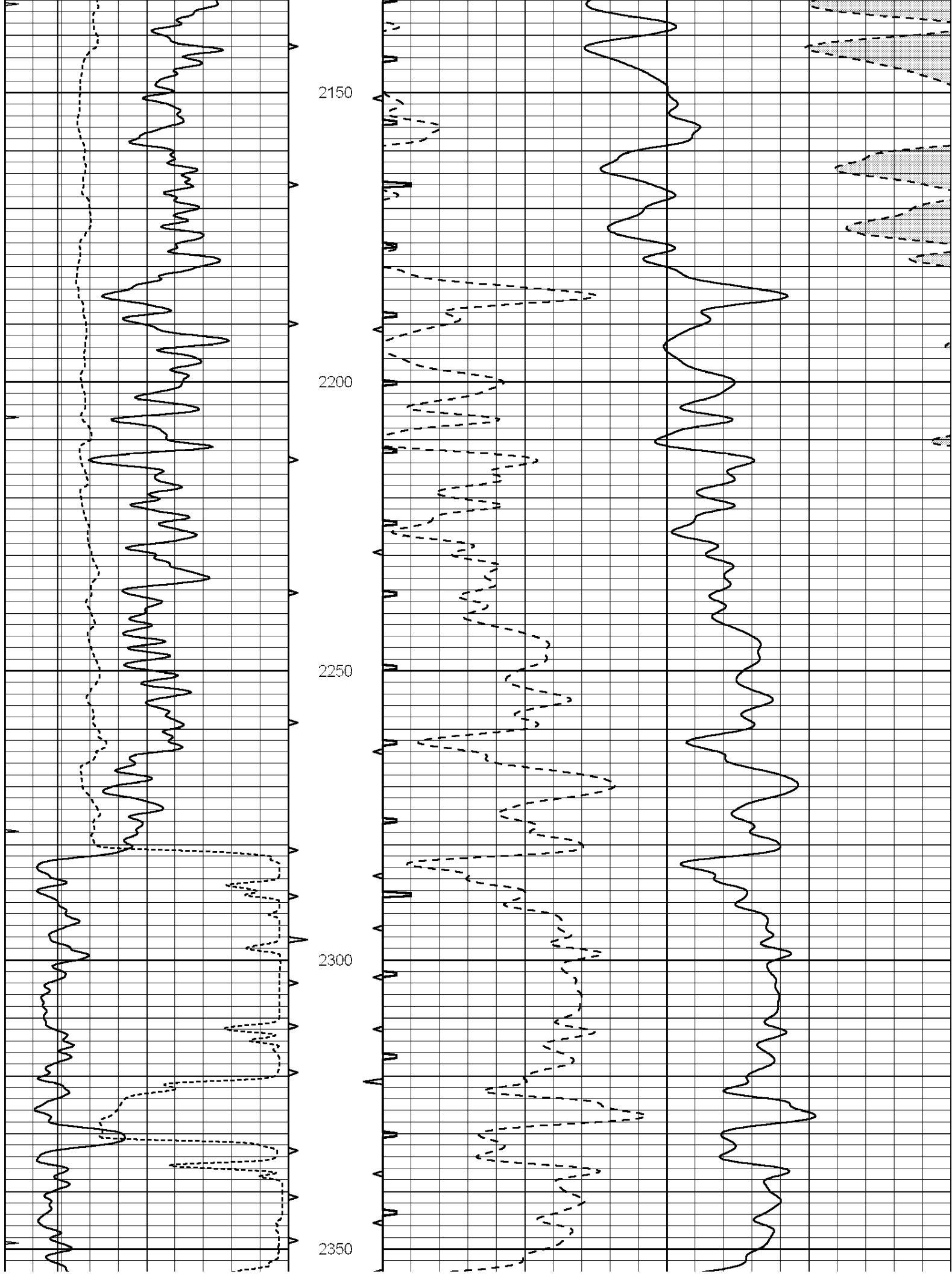


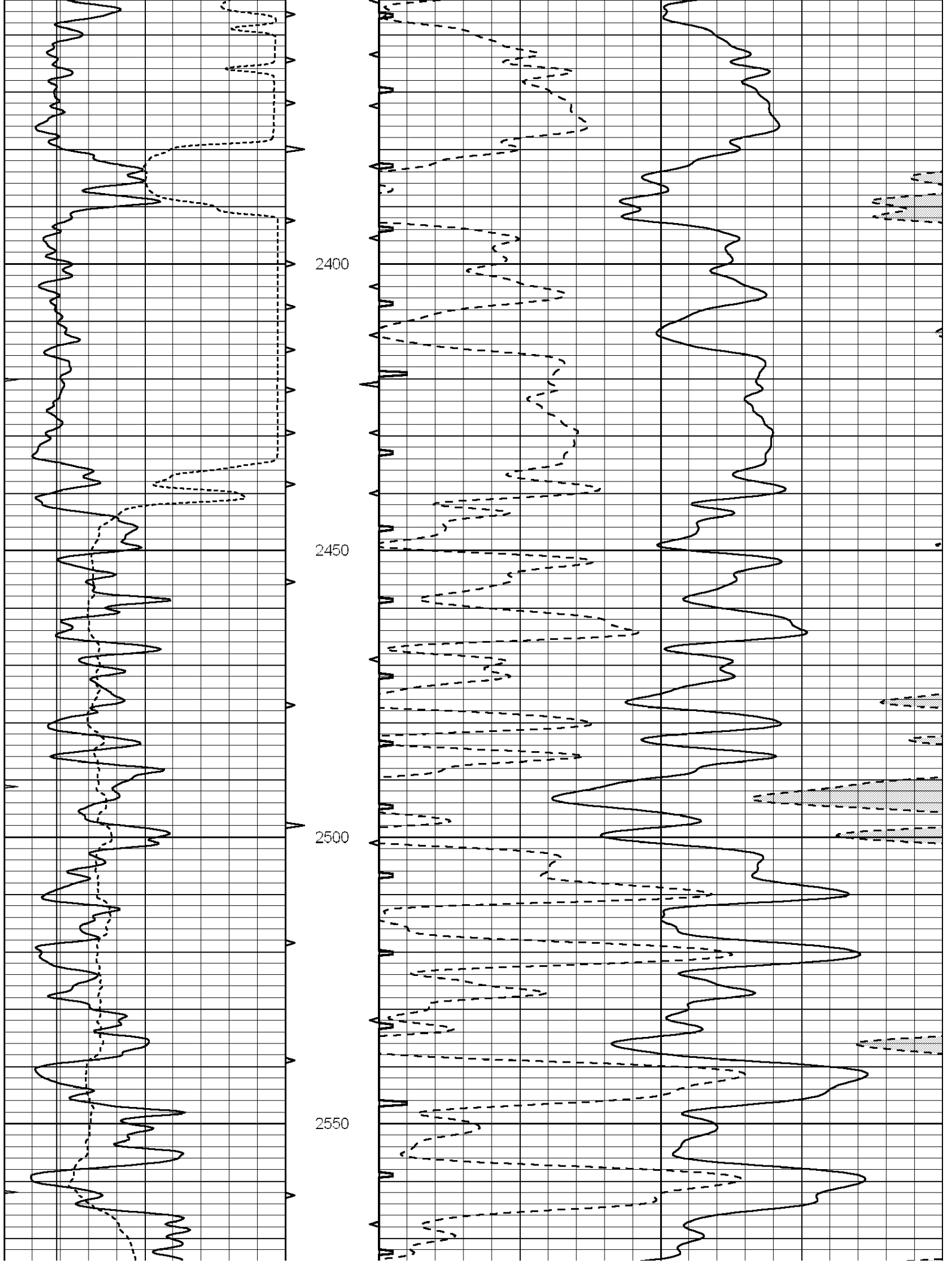


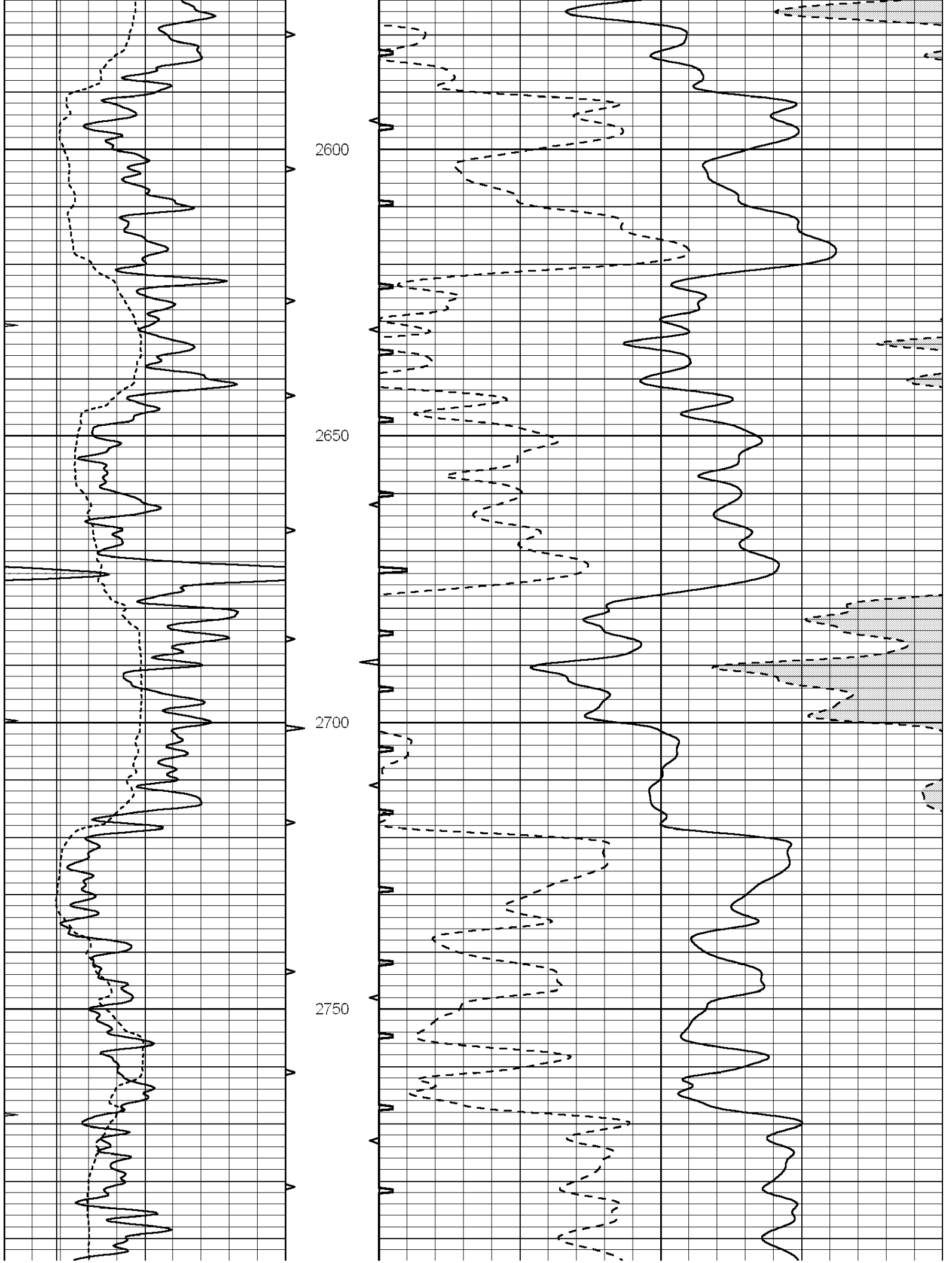


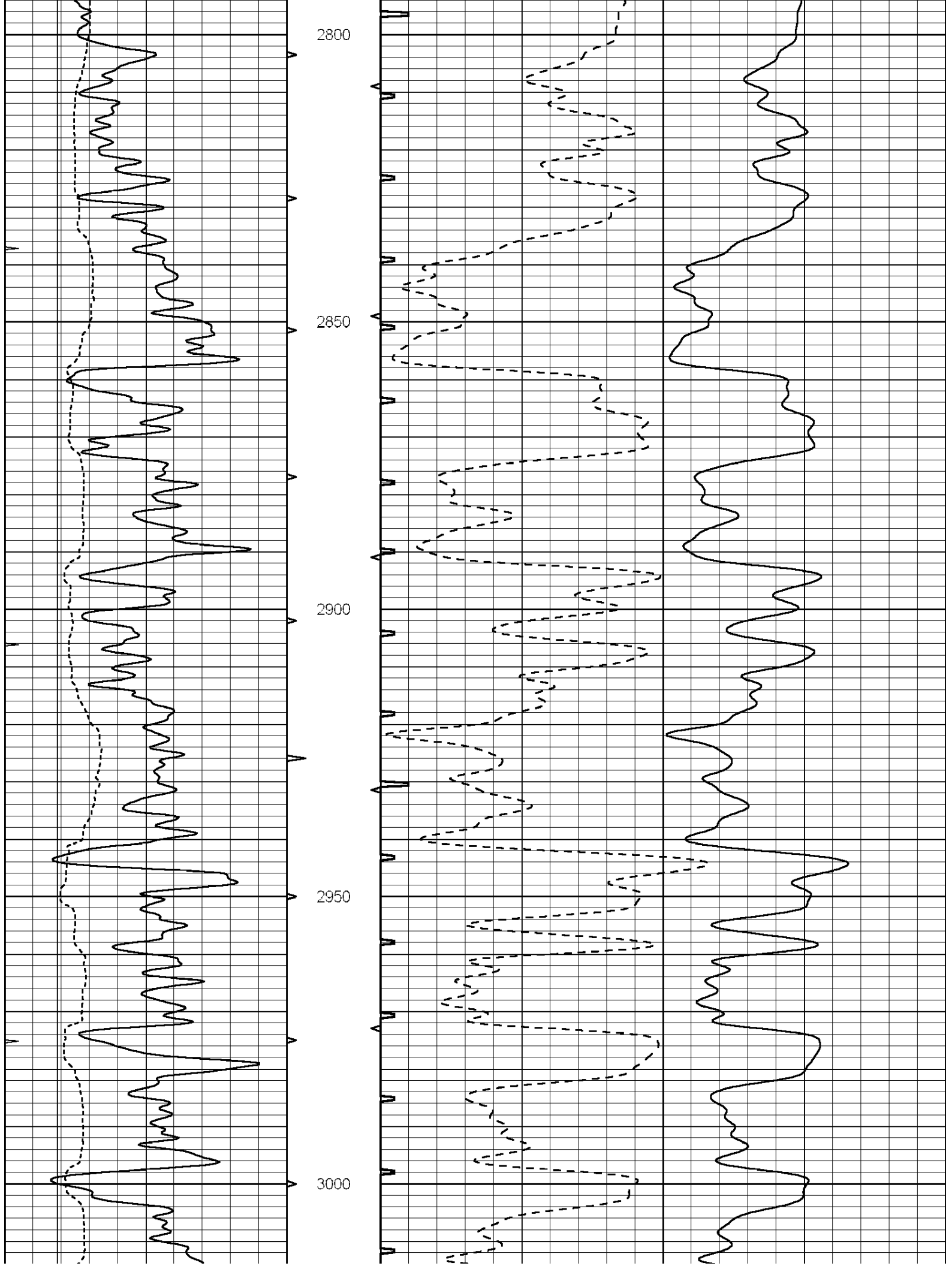


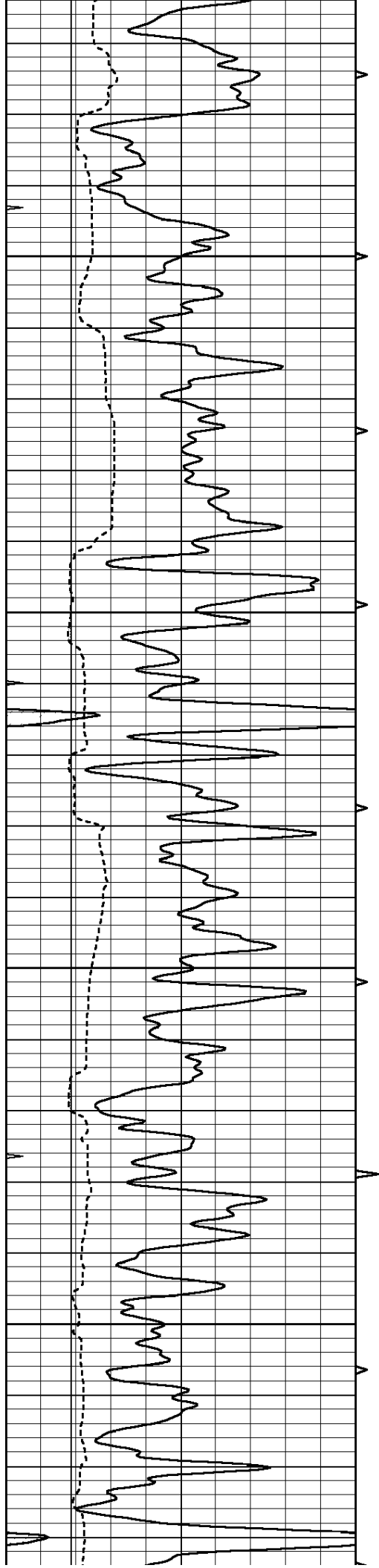










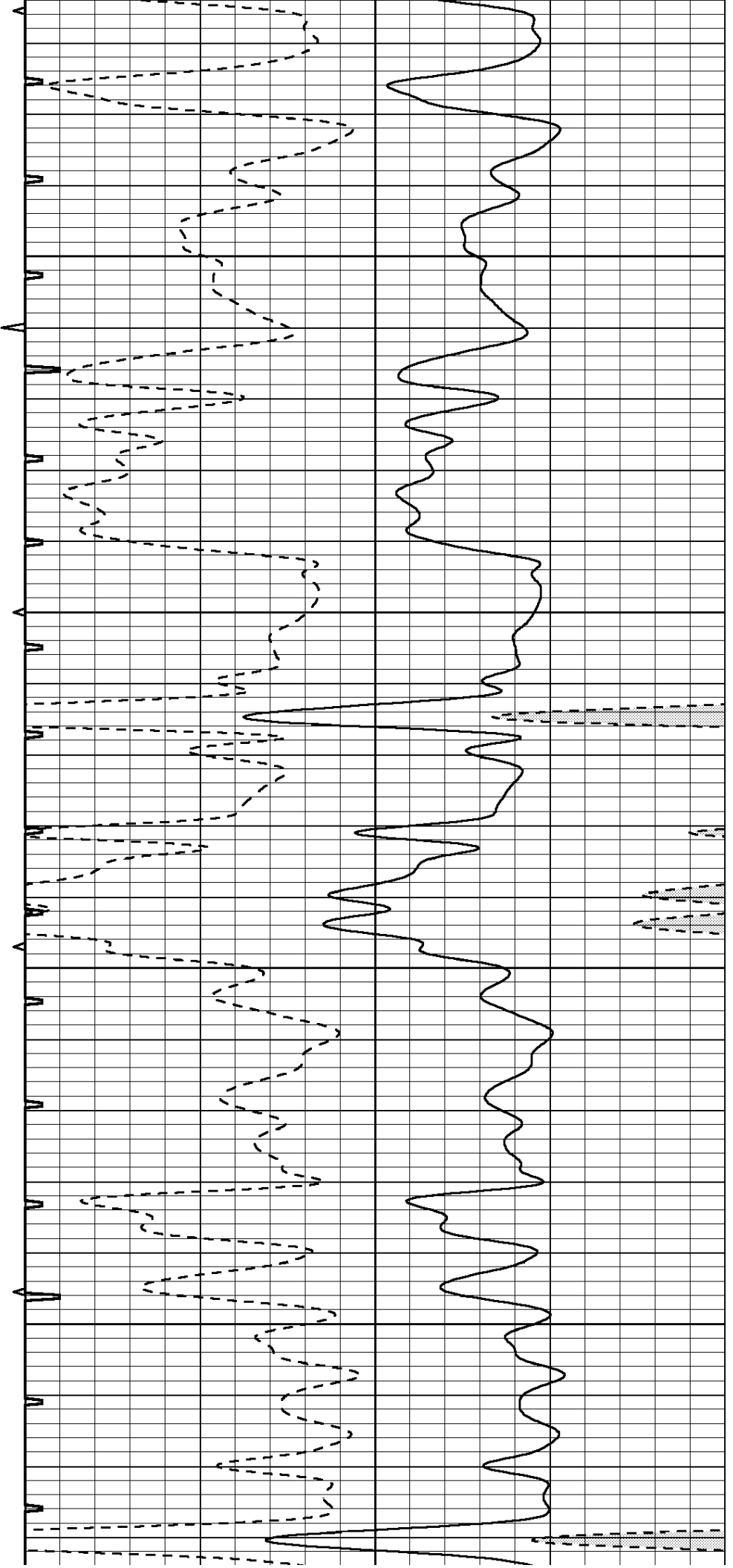


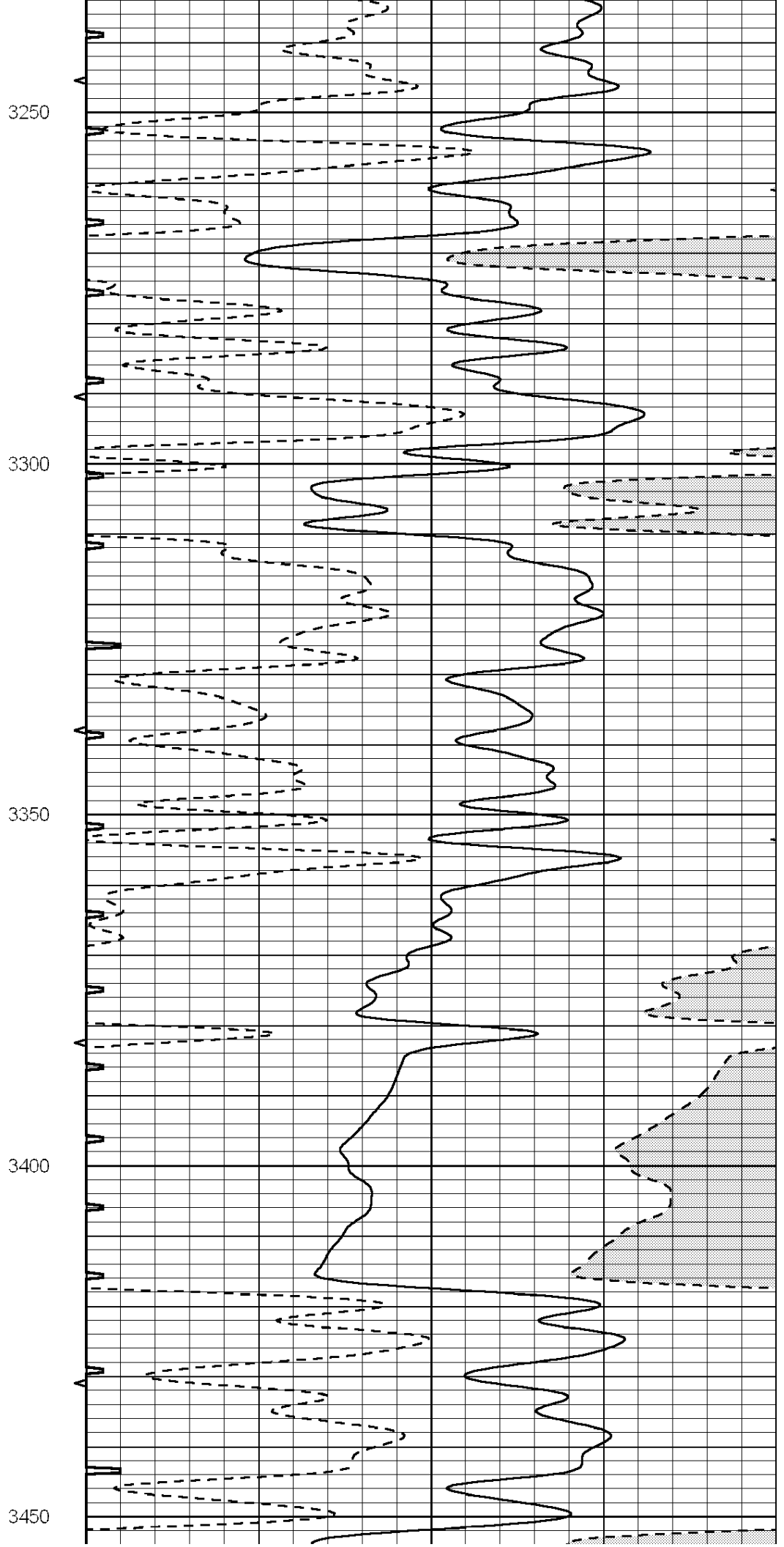
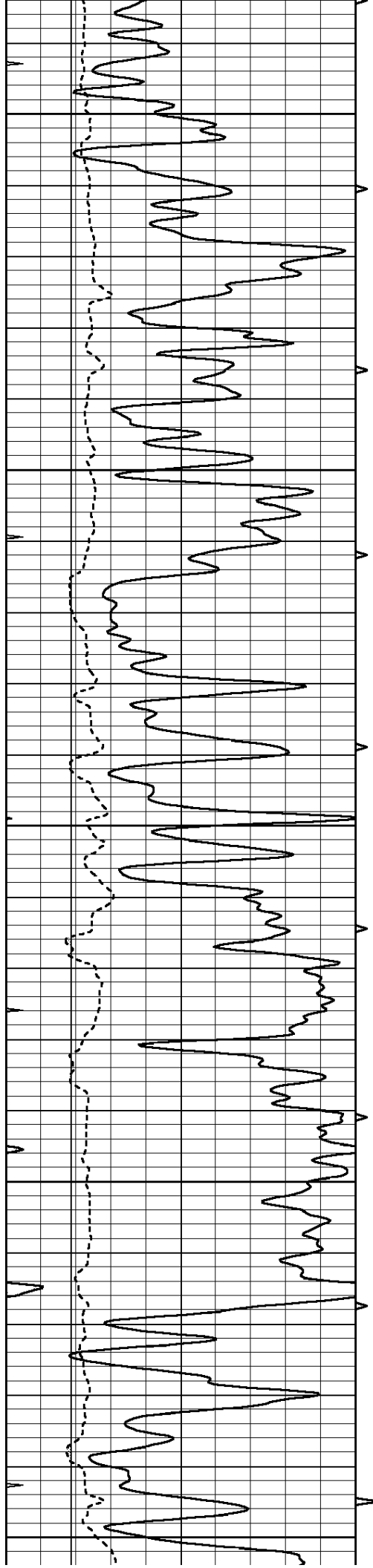
3050

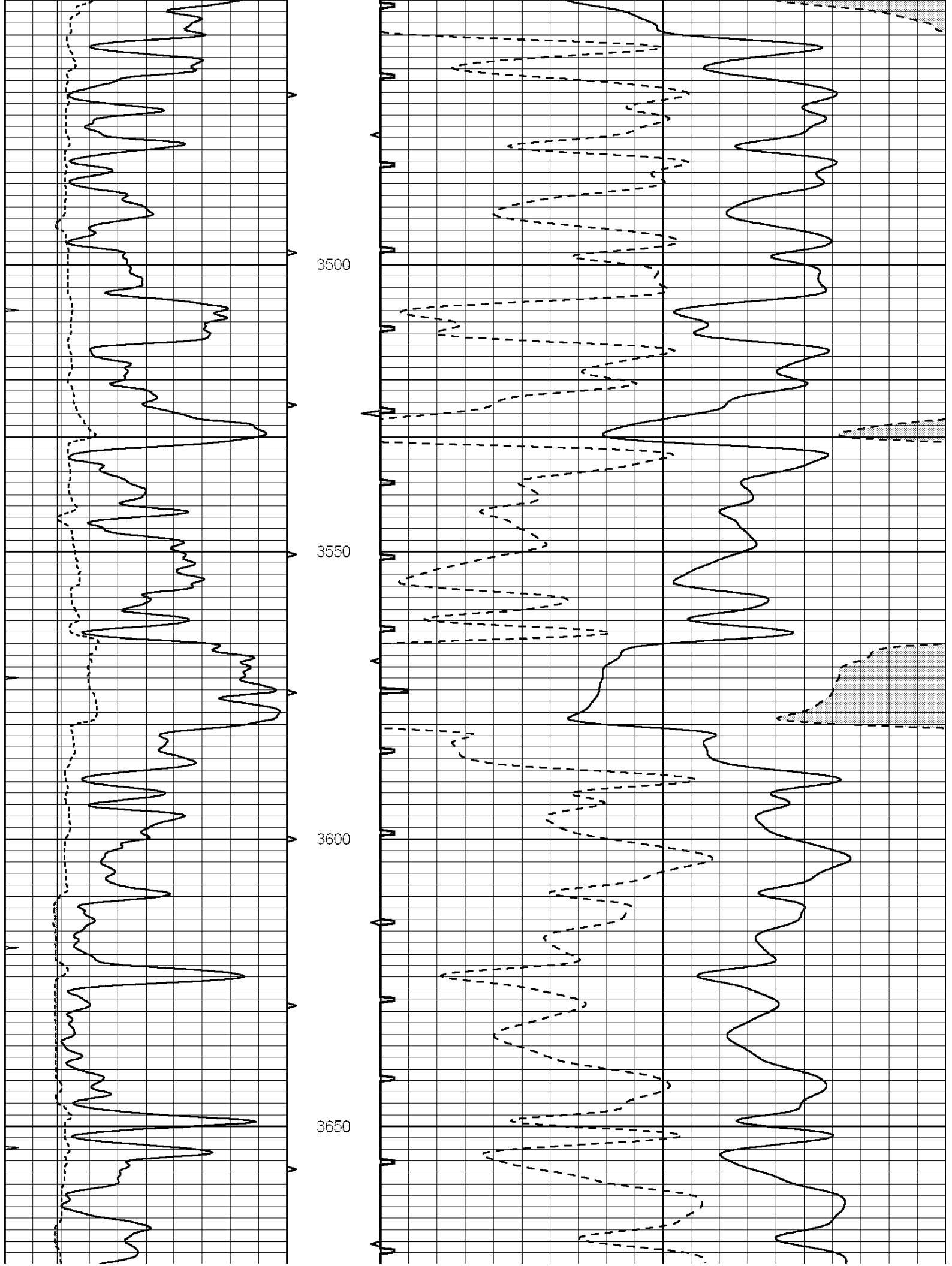
3100

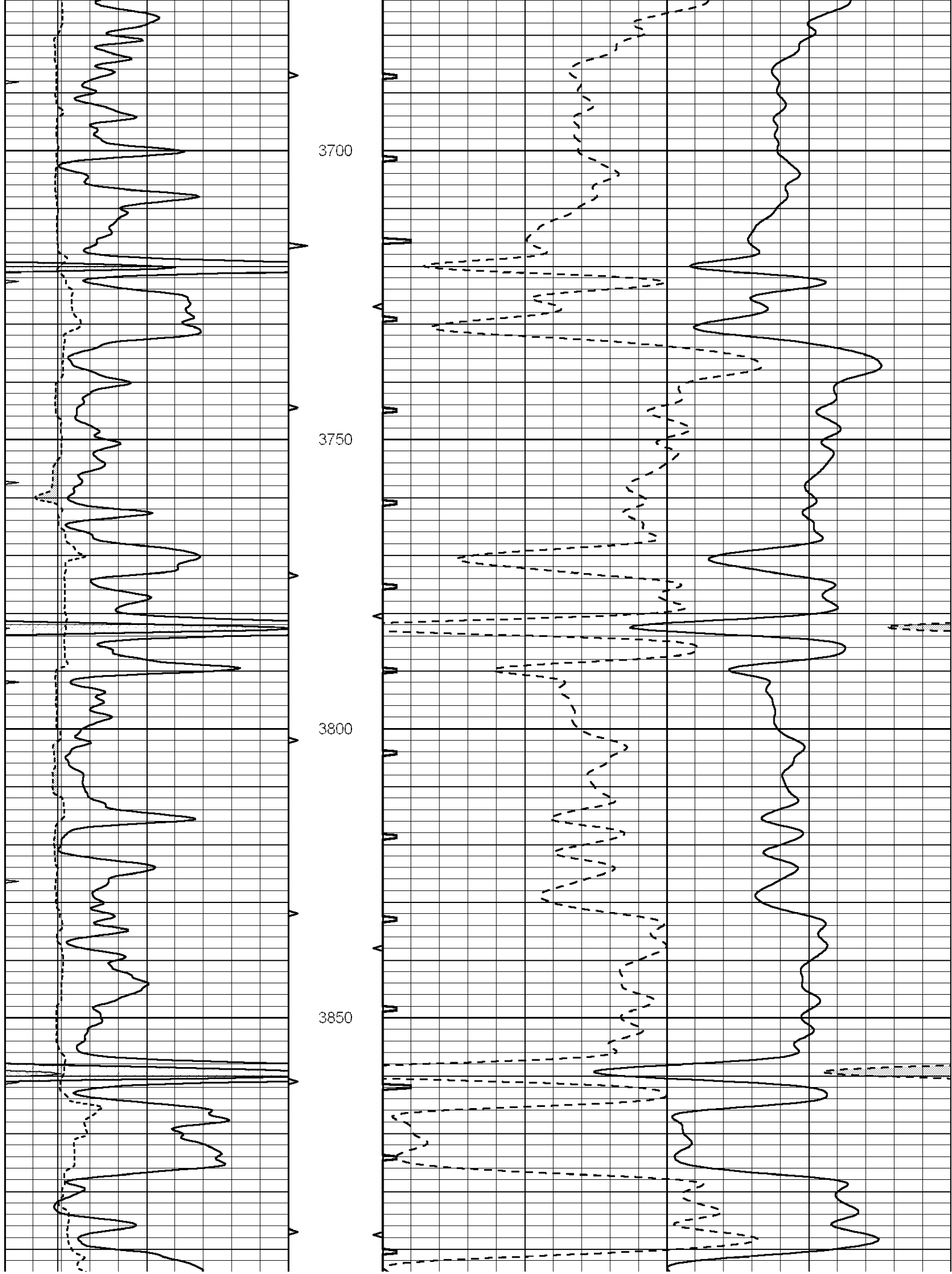
3150

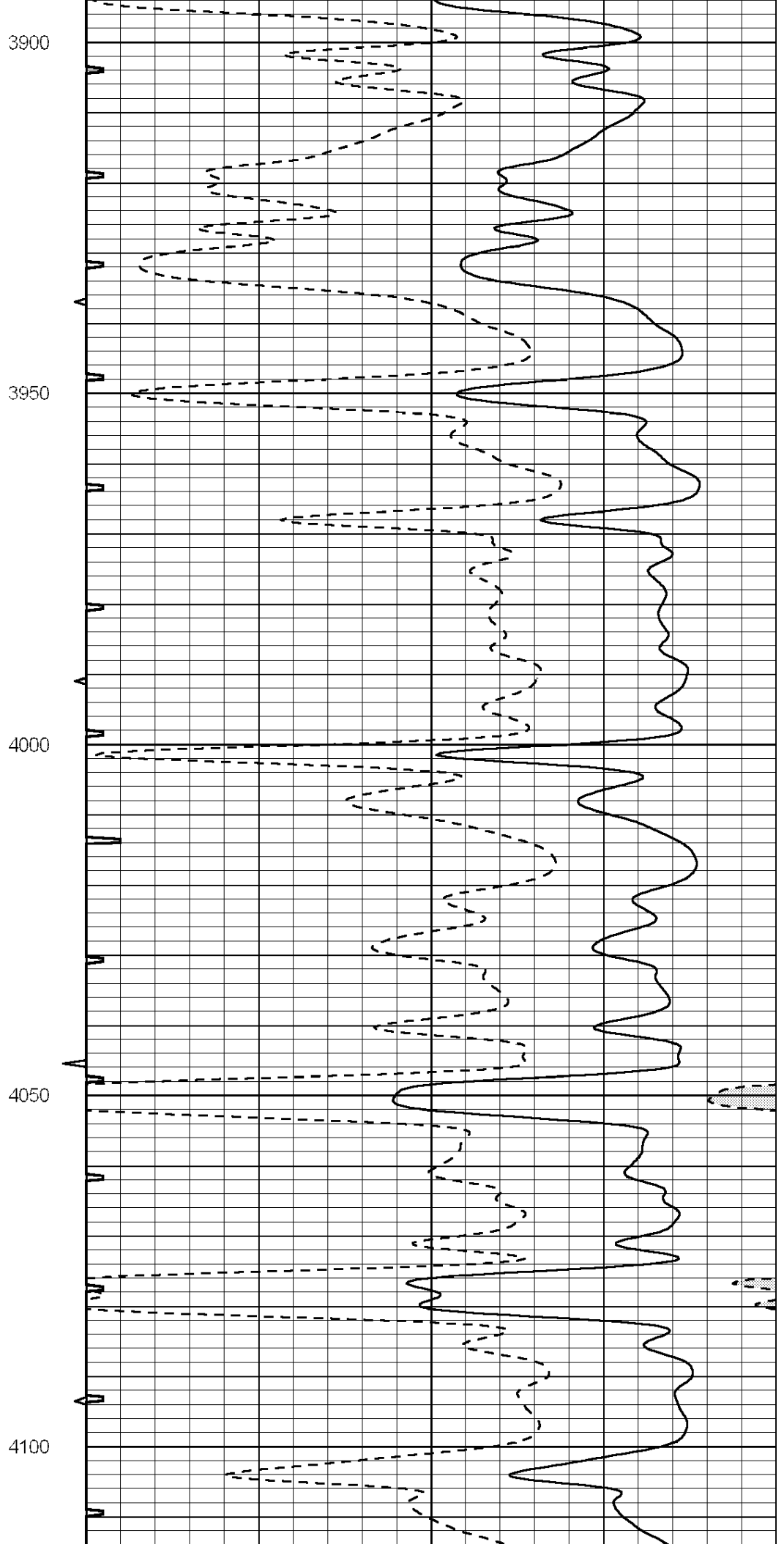
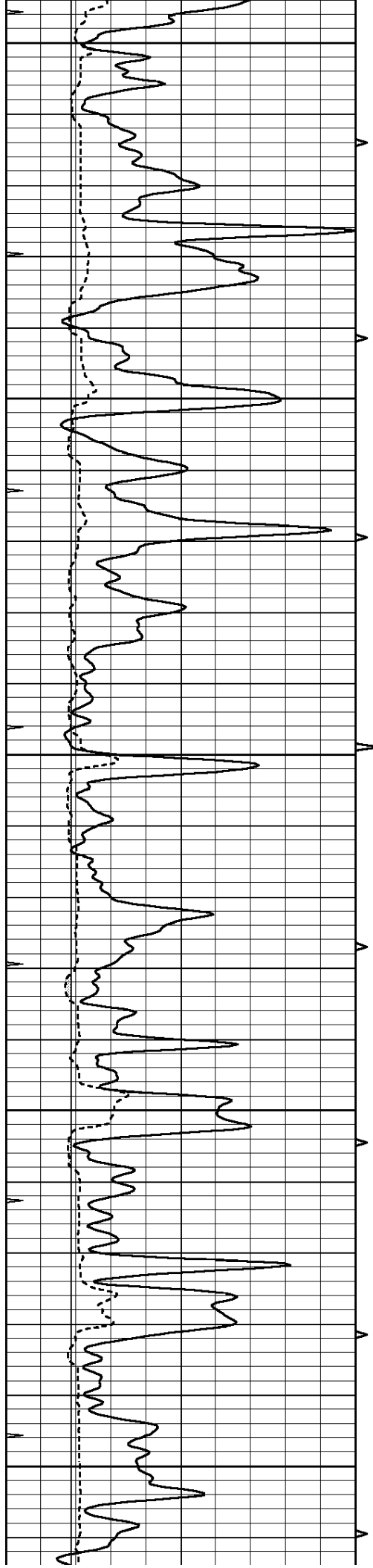
3200

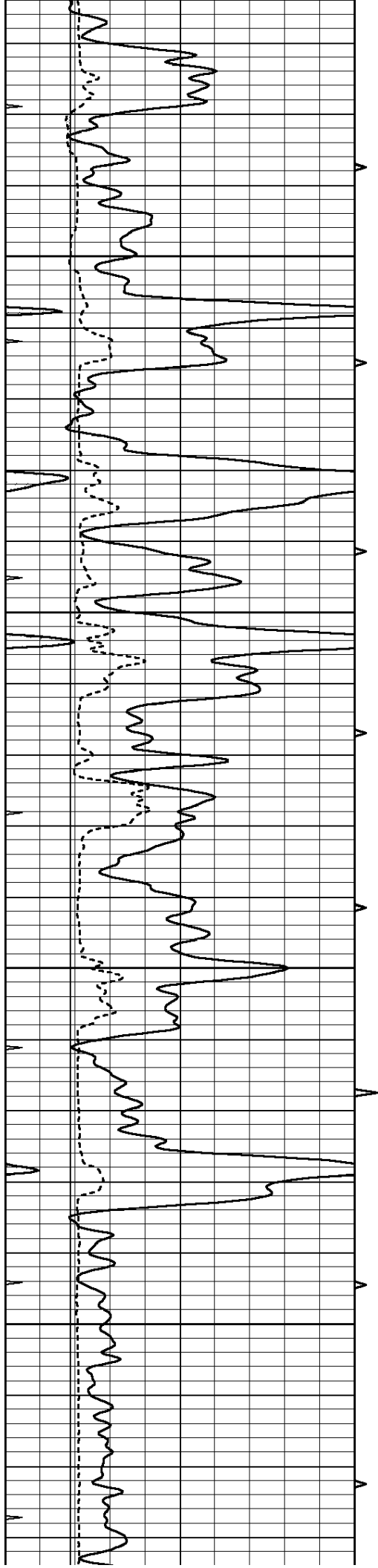










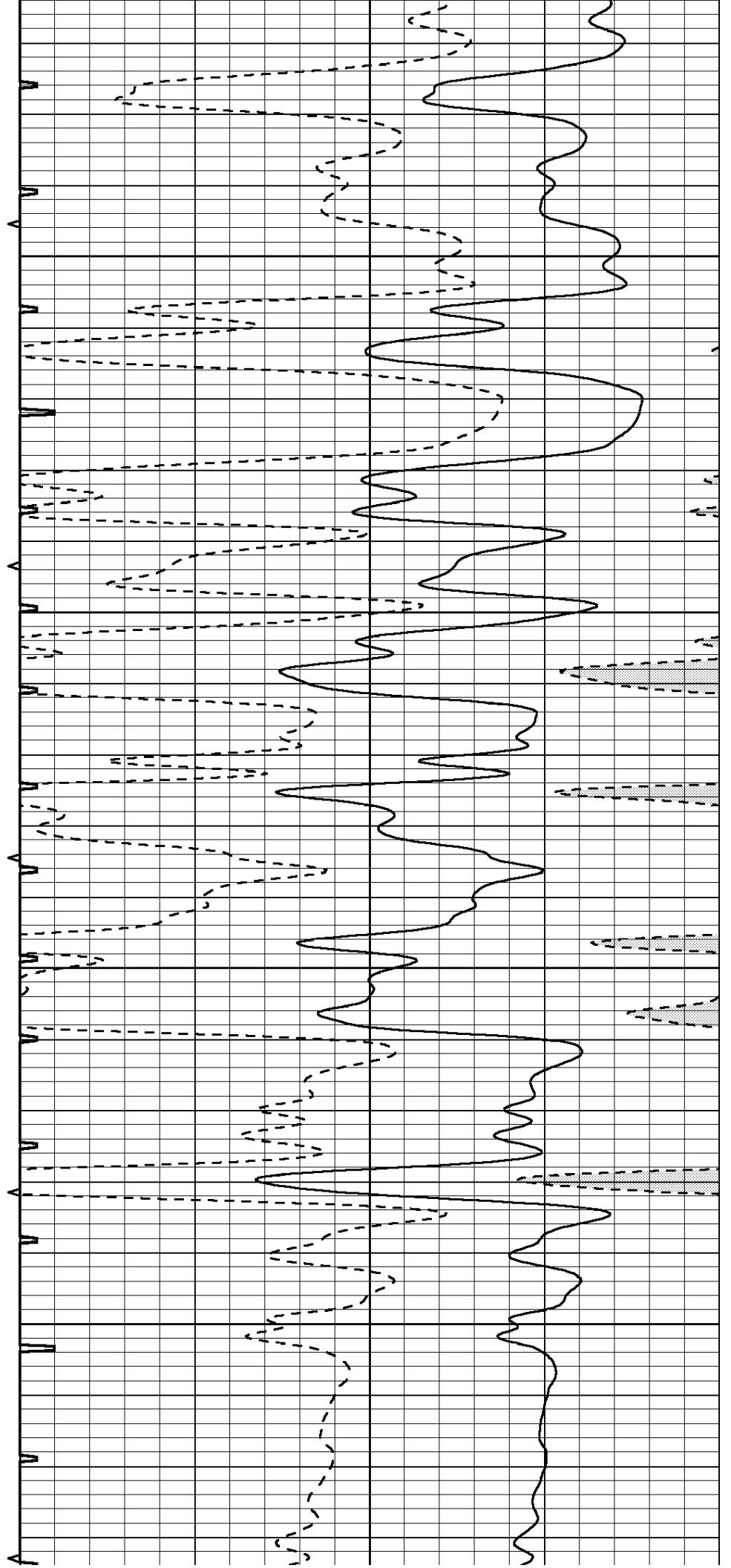


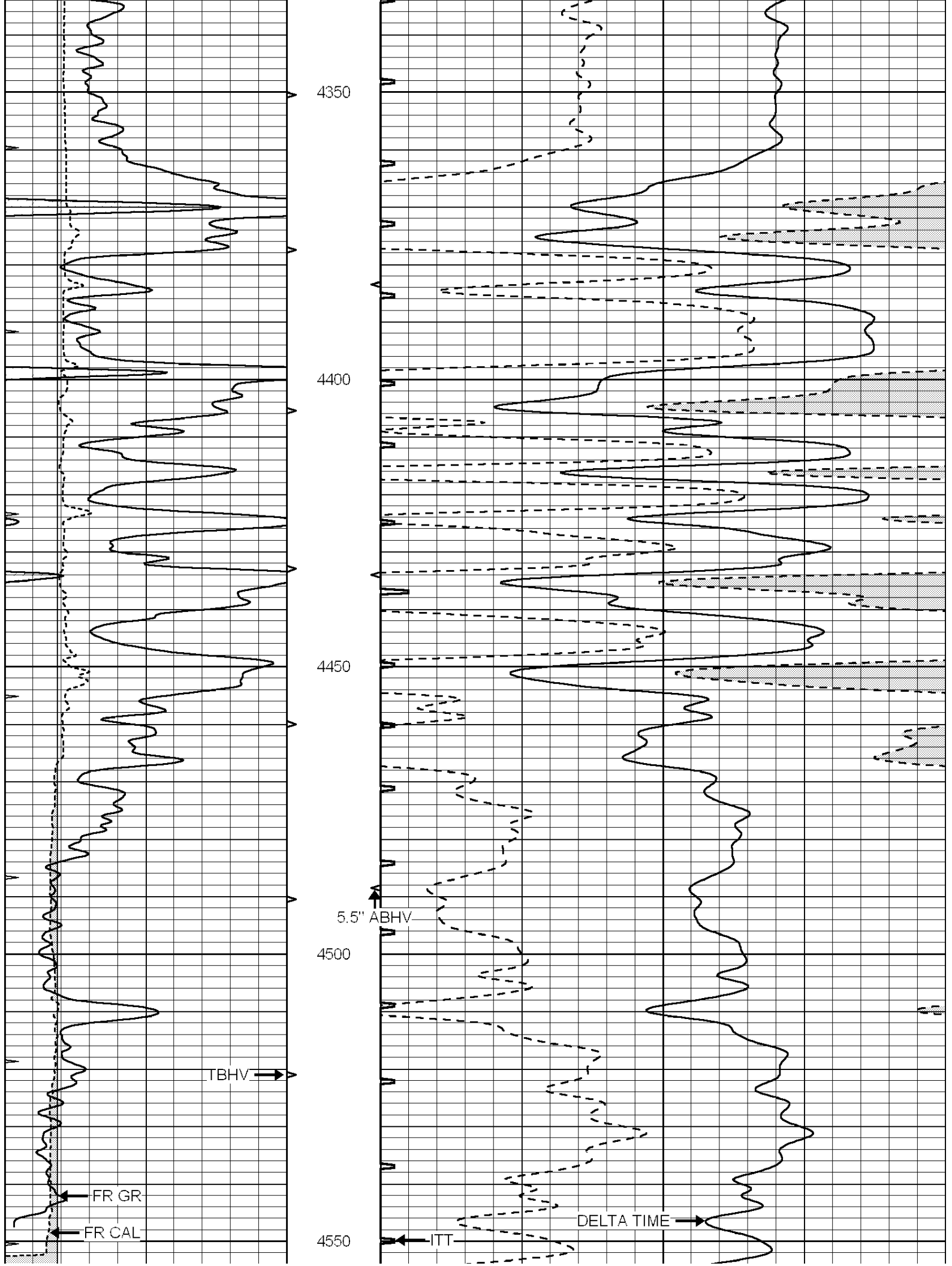
4150

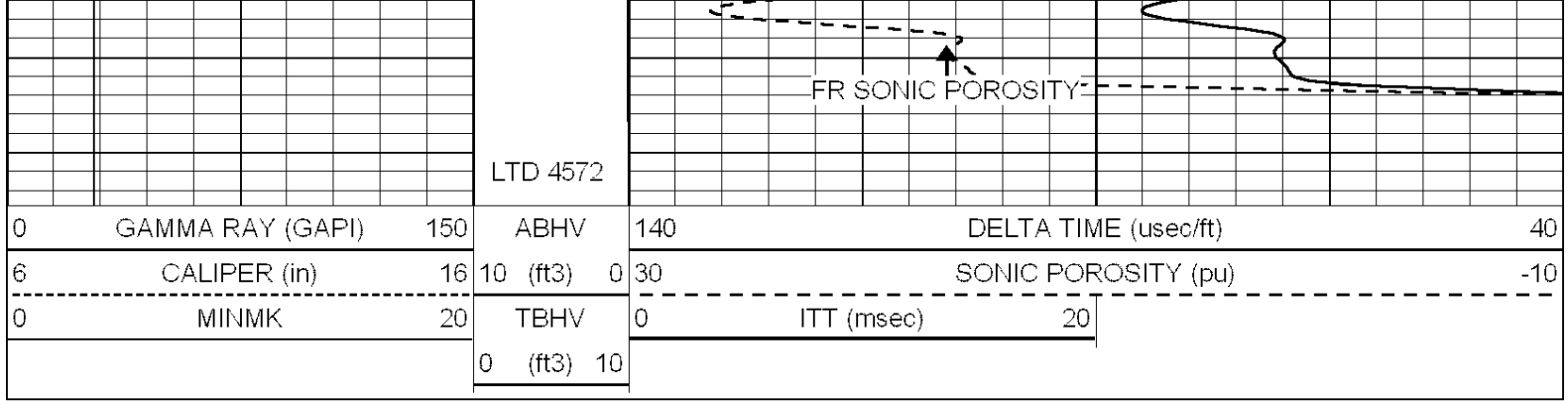
4200

4250

4300



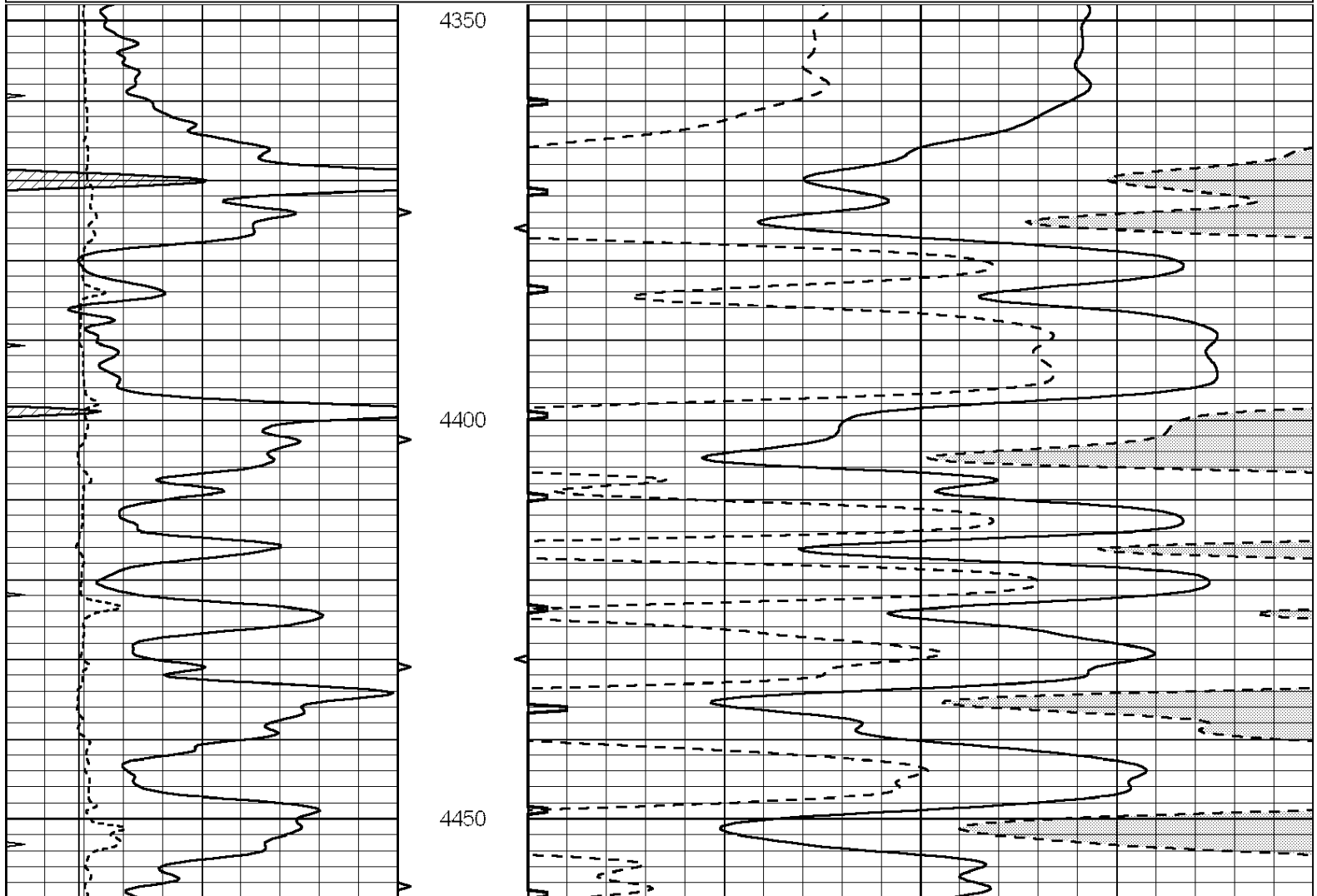
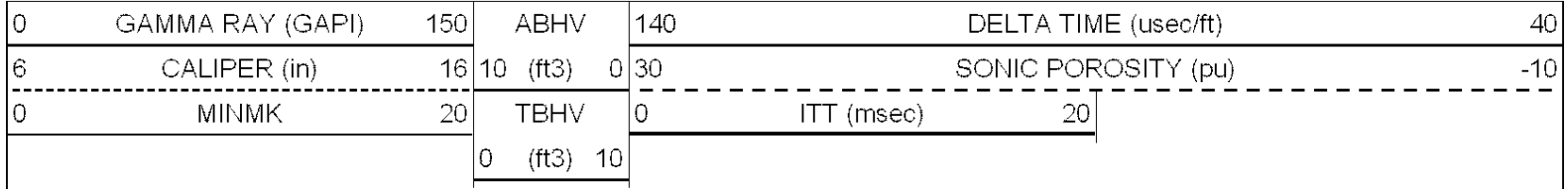


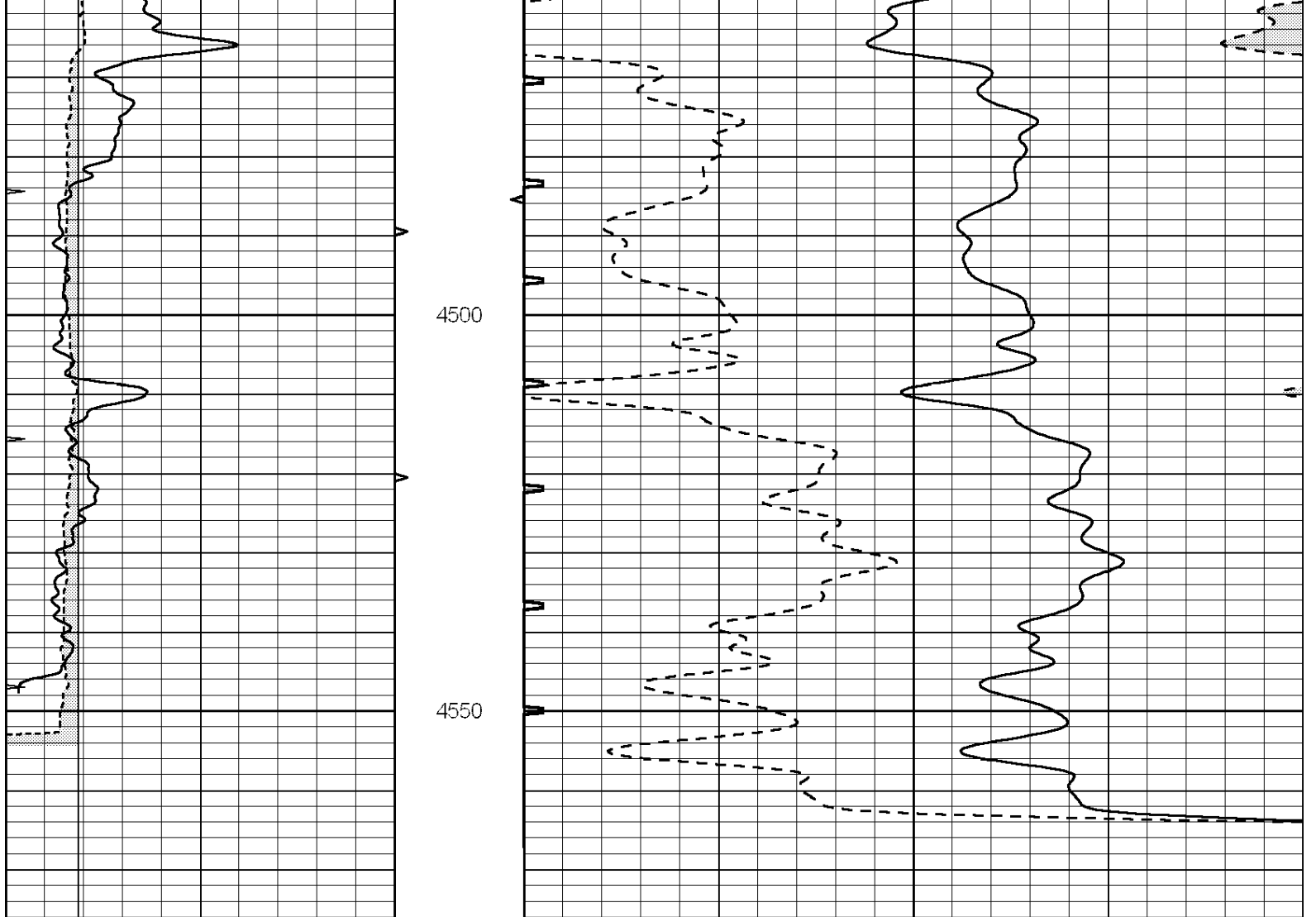


SUPERIOR  
Hays,  
Kansas

# REPEAT SECTION

Database File: 006288pe.db  
 Dataset Pathname: pass5.2  
 Presentation Format: slt  
 Dataset Creation: Tue Feb 15 22:55:11 2011  
 Charted by: Depth in Feet scaled 1:240





0	GAMMA RAY (GAPI)	150	ABHV	140	DELTA TIME (usec/ft)	40
6	CALIPER (in)	16	10 (ft3) 0	30	SONIC POROSITY (pu)	-10
0	MINMK	20	TBHV	0	ITT (msec)	20
			0 (ft3) 10			