



SUPERIOR
Hays,
Kansas

**MICRO
LOG**

Company MULL DRILLING COMPANY, INC.
Well #1-22 CORDER - HENNING UNIT
Field OSGOOD SOUTHEAST
County NESS
State KANSAS

Company MULL DRILLING COMPANY, INC.
Well #1-22 CORDER - HENNING UNIT
Field OSGOOD SOUTHEAST
County NESS State KANSAS

Location: API # : 15-135-25207-0000
2534' FNL & 1003' FEL
SEC 22 TWP 16S RGE 23W
Permanent Datum GROUND LEVEL Elevation 2480
Log Measured From KELLY BUSHING 5' A.G.L.
Drilling Measured From KELLY BUSHING
Elevation
K.B. 2485
D.F. 2483
G.L. 2480

Date	2/5/11
Run Number	TWO
Depth Driller	4575
Depth Logger	4572
Bottom Logged Interval	4549
Top Log Interval	3600
Casing Driller	8 5/8"@233'
Casing Logger	234
Bit Size	7 7/8"
Type Fluid in Hole	CHEMICAL MUD
Density / Viscosity	9.6/62
pH / Fluid Loss	9.5/6.8
Source of Sample	FLOWLINE
Rim @ Meas. Temp	.700@80F
Rmf @ Meas. Temp	.525@80F
Rmc @ Meas. Temp	.840@80F
Source of Rmf / Rmc	MEASUREMENT
Rim @ BHT	.463@121F
Time Circulation Stopped	4 HOURS
Time Logger on Bottom	8:15 P.M.
Maximum Recorded Temperature	121F
Equipment Number	0836
Location	HAYS, KANSAS
Recorded By	JEFF LUEBBERS
Witnessed By	KEVIN KESSLER

<<< Fold Here >>>

All interpretations are opinions based on inferences from electrical or other measurements and we cannot and do not guarantee the accuracy or correctness of any interpretation, and we shall not, except in the case of gross or willful negligence on our part, be liable or responsible for any loss, costs, damages, or expenses incurred or sustained by anyone resulting from any interpretation made by any of our officers, agents or employees. These interpretations are also subject to our general terms and conditions set out in our current Price Schedule.

Comments

THANK YOU FOR USING SUPERIOR WELL SERVICE HAYS, KANSAS (785) 628-6395
DIRECTIONS
BROWNELL, KS. 6W. ON HWY 4 TO "RD. U", 1/2N., E. INTO

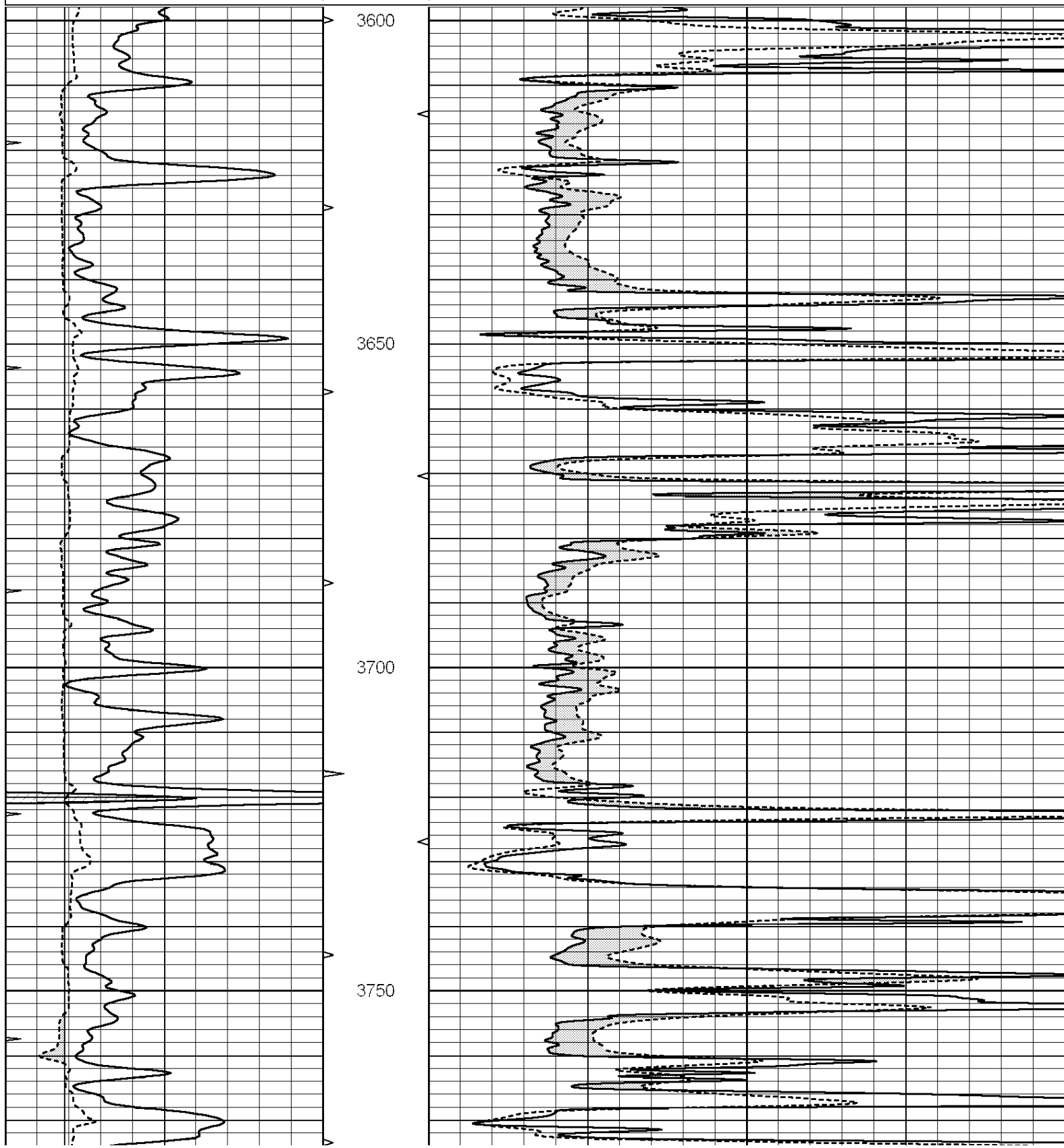


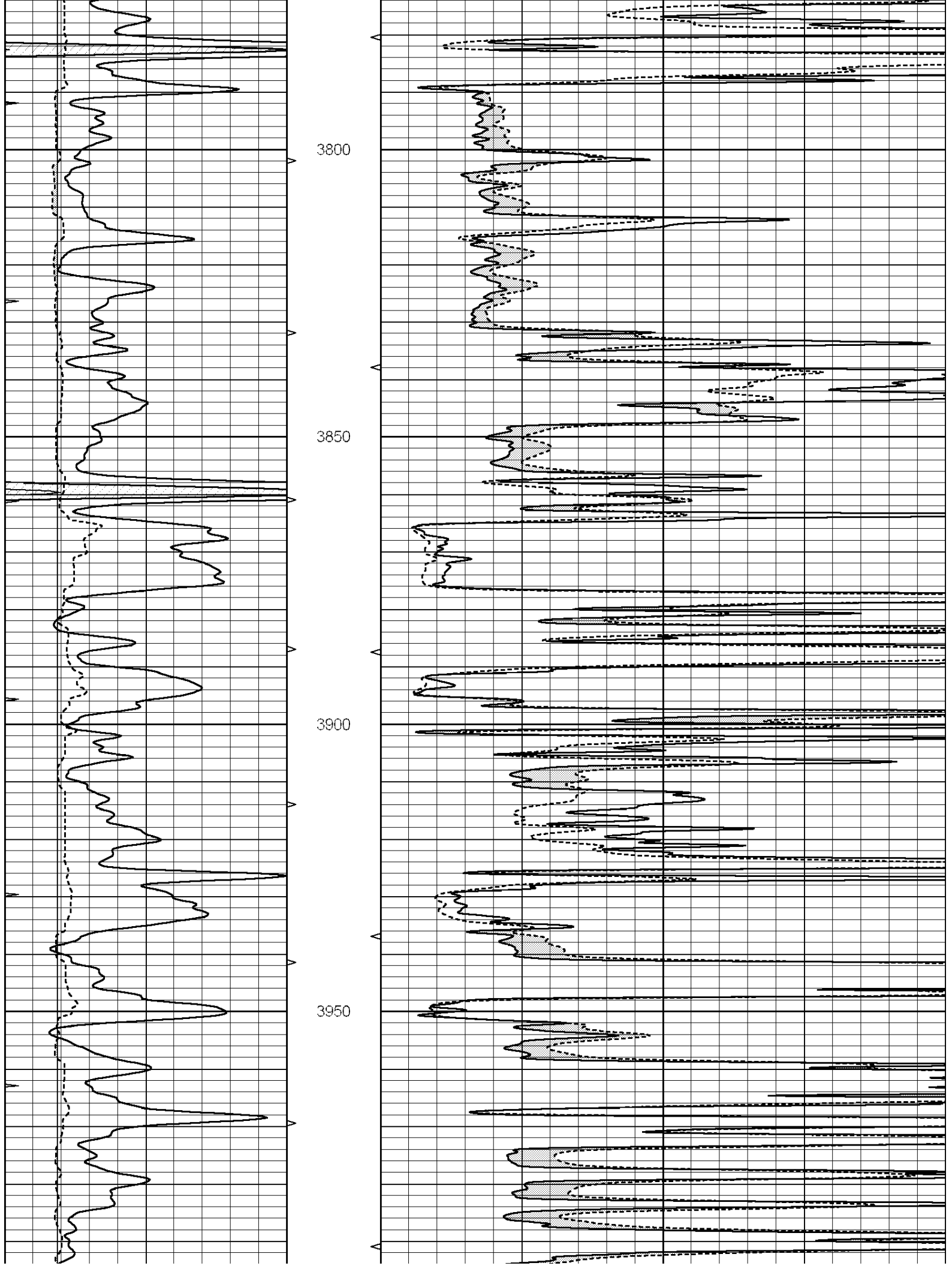
SUPERIOR
Hays,
Kansas

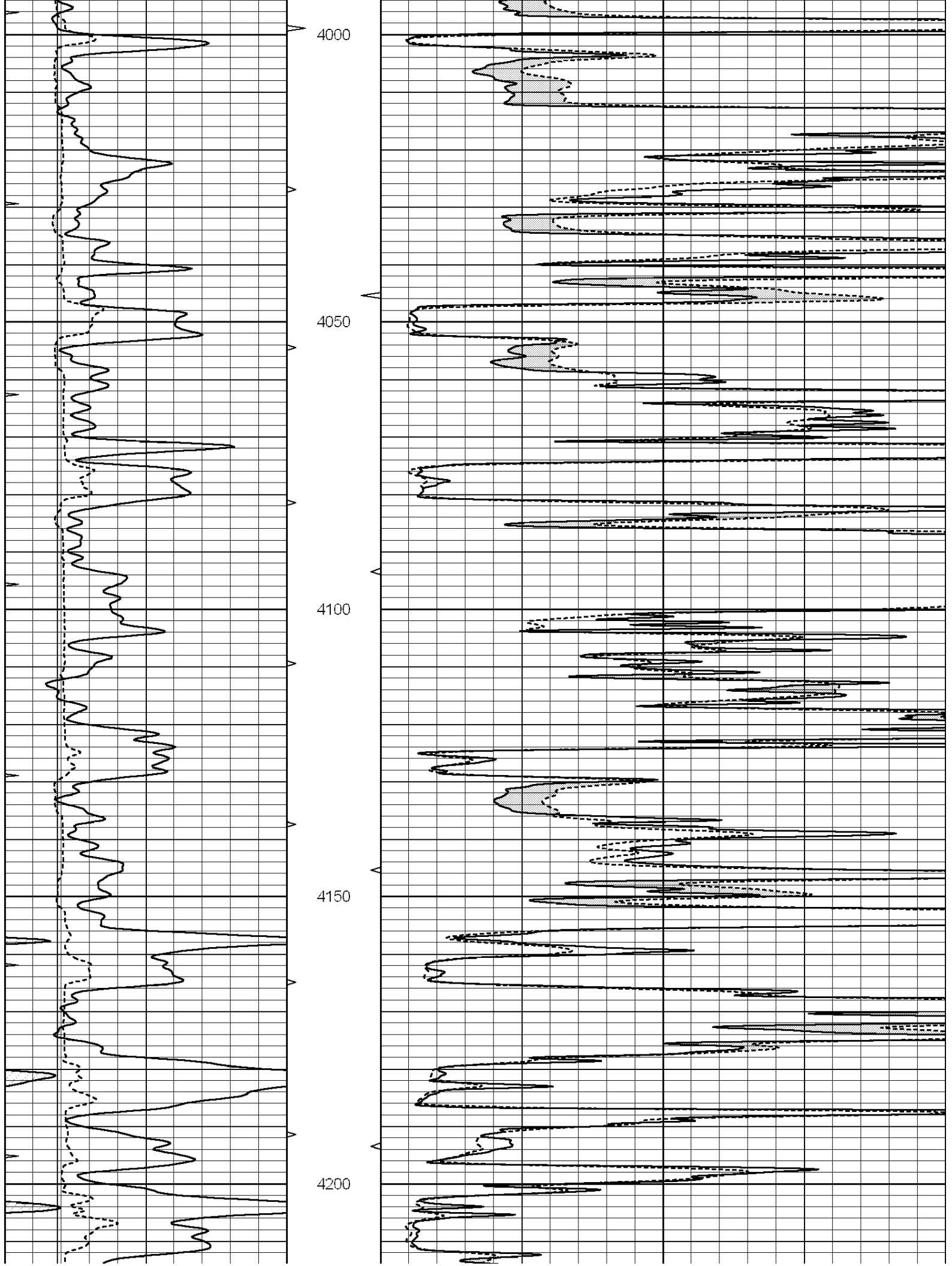
MAIN SECTION

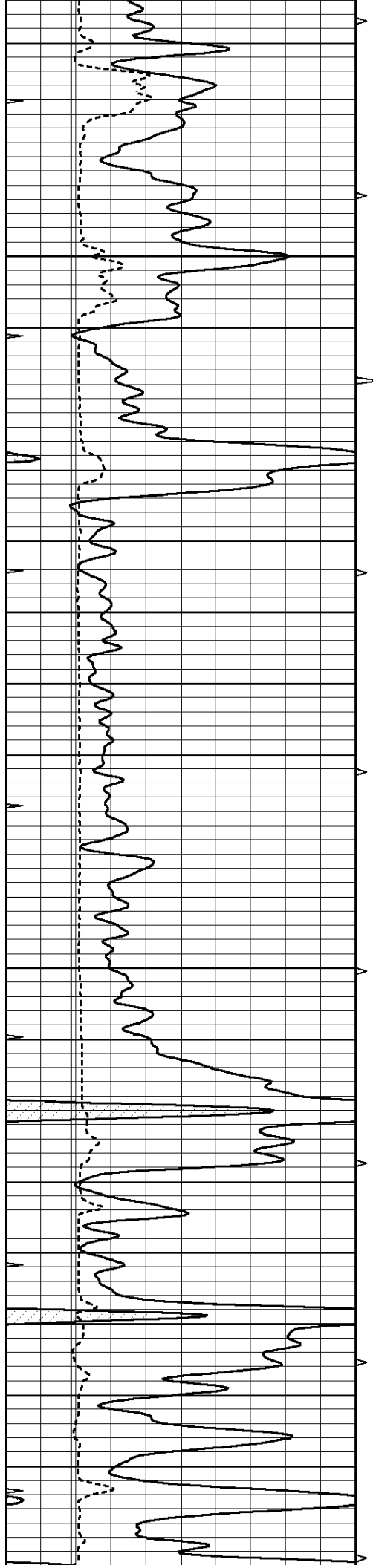
Database File: 006288pe.db
 Dataset Pathname: pass6.2
 Presentation Format: micro
 Dataset Creation: Tue Feb 15 23:15:58 2011 by Calc Open-Cased 090629
 Charted by: Depth in Feet scaled 1:240

0	GAMMA RAY (GAPI)	150	ABHV	0	MEL1.5 (Ohm-m)	40
6	CALIPER (in)	16	10 (ft3)	0	MEL2.0 (Ohm-m)	40
0	MINMK	20	TBHV			
			0 (ft3)	10		







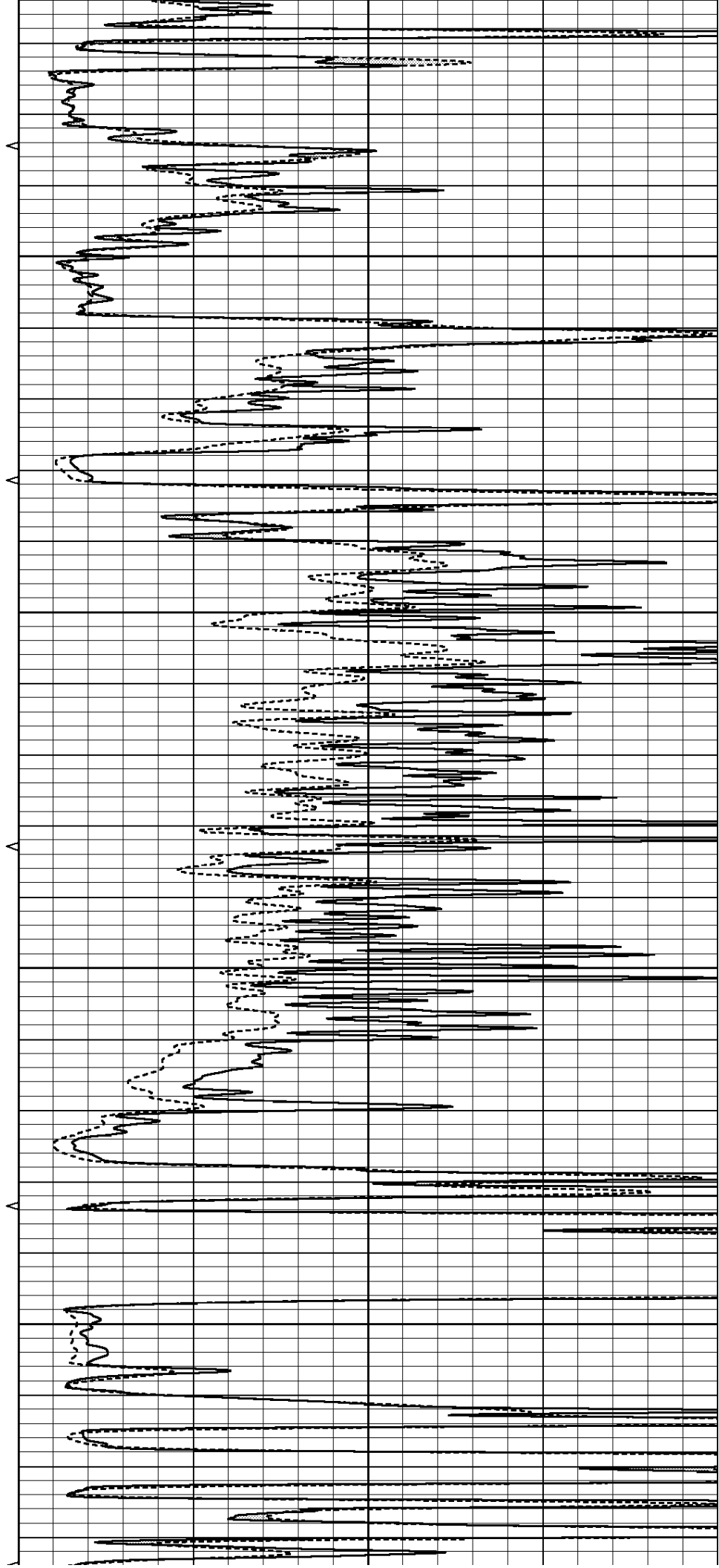


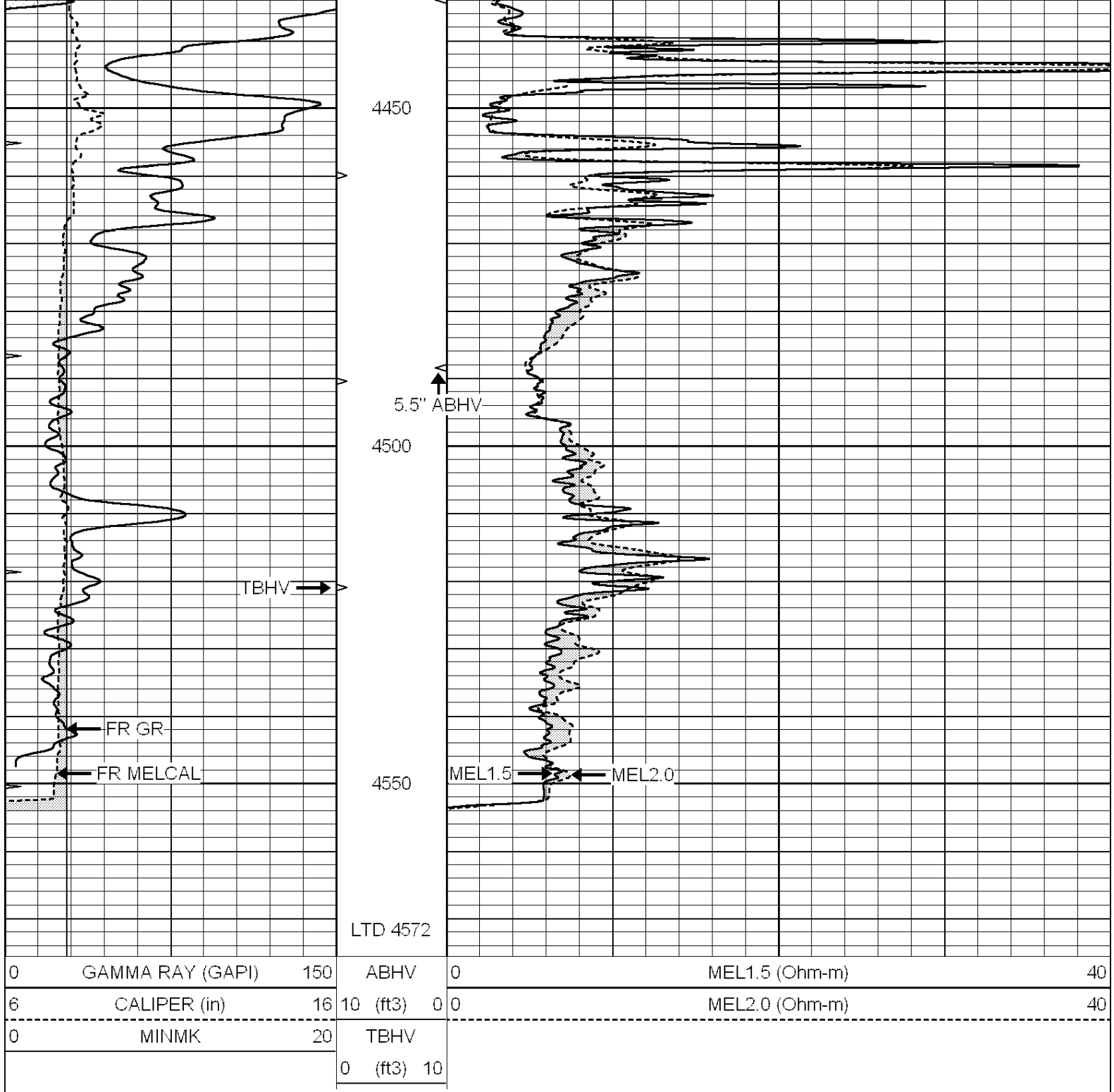
4250

4300

4350

4400





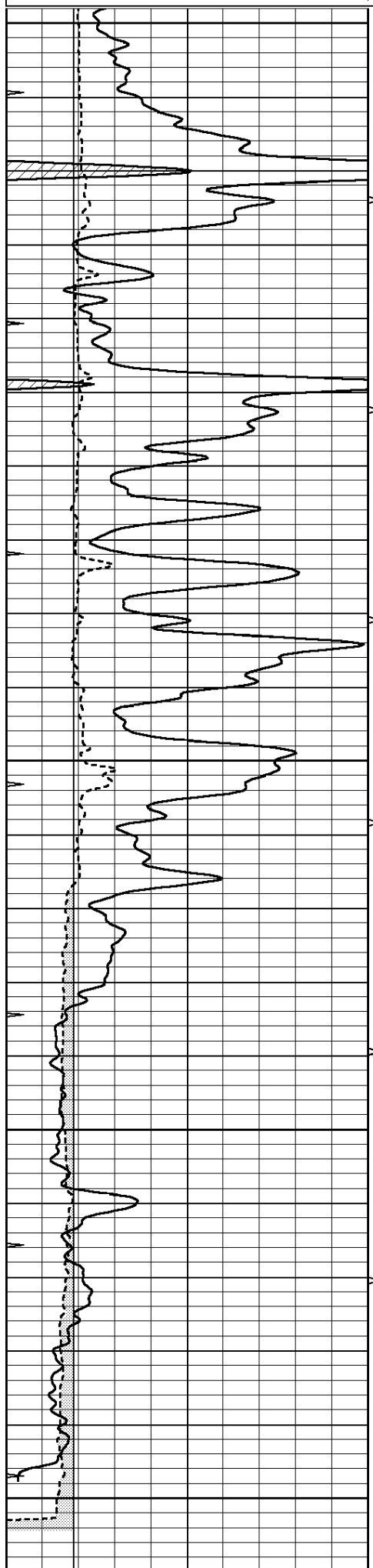
SUPERIOR
Hays,
Kansas

REPEAT SECTION

Database File: 006288pe.db
 Dataset Pathname: pass5.2
 Presentation Format: micro
 Dataset Creation: Tue Feb 15 22:55:11 2011
 Charted by: Depth in Feet scaled 1:240

0	GAMMA RAY (GAPI)	150	ABHV	0	MEL1.5 (Ohm-m)	40
6	CALIPER (in)	16	10 (ft3)	0 0	MEL2.0 (Ohm-m)	40
0	MINMK	20	TBHV			

0 (ft3) 10



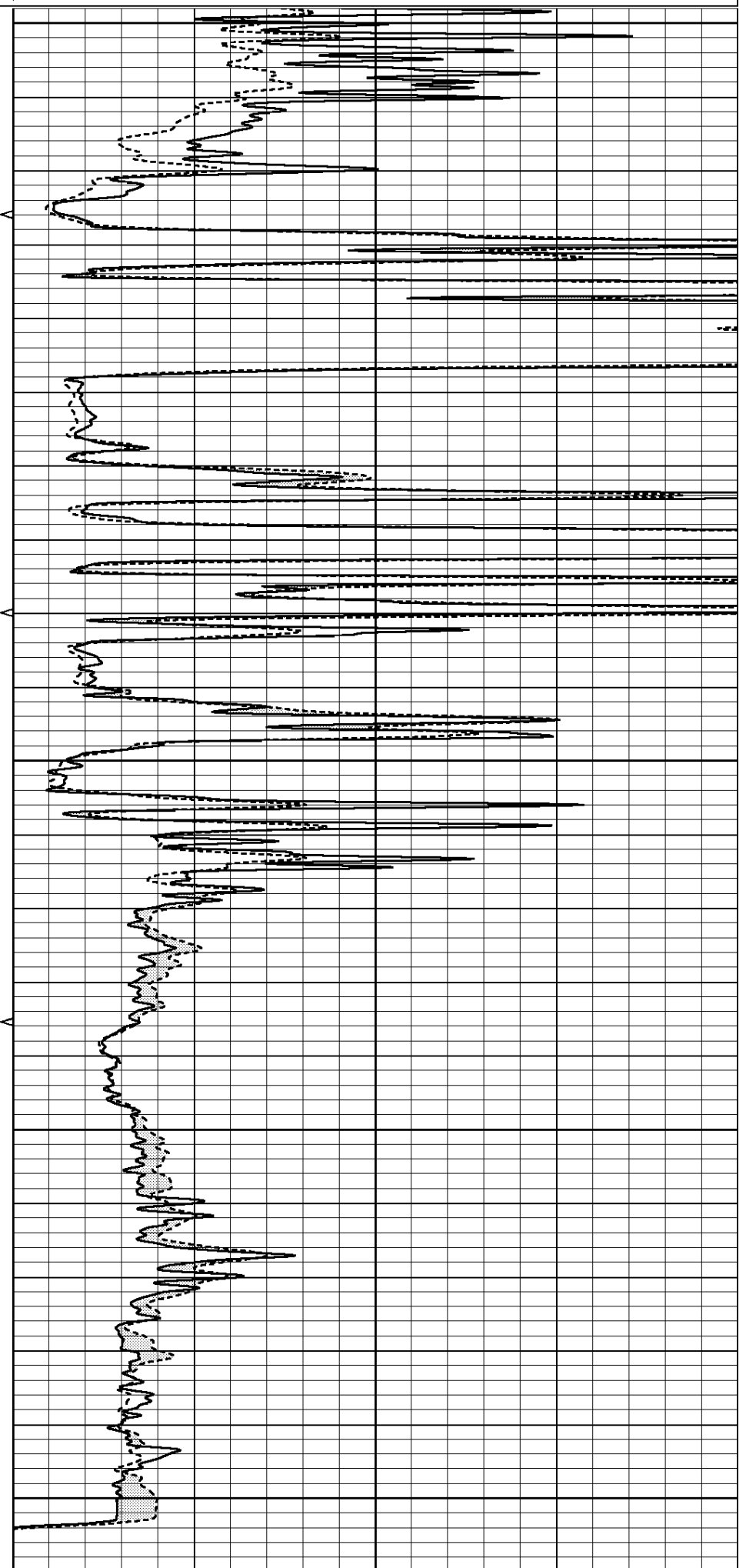
4350

4400

4450

4500

4550



0	GAMMA RAY (GAPI)	150	ABHV	0	MEL1.5 (Ohm-m)	40
6	CALIPER (in)	16	10 (ft3) 0	0	MEL2.0 (Ohm-m)	40
0	MINMK	20	TBHV			
			0 (ft3) 10			

Calibration Report

Database File: 006288pe.db
Dataset Pathname: pass6.2
Dataset Creation: Tue Feb 15 23:15:58 2011 by Calc Open-Cased 090629

MICRO Calibration Report

Serial Number: MICRO5
Tool Model: PROBE
Performed: Tue Feb 15 22:43:22 2011

Caliper Calibration: Gain=5.773 Offset=-33.858

References	Low Cal	High Cal
Readings	7.600	15.000
	7.181	8.463

1.5" Calibration: Gain=40.000 Offset=-0.300

References	Low Cal	High Cal
Readings	0.000	20.000
	0.008	0.991

2" Calibration: Gain=50.000 Offset=-1.000

References	Low Cal	High Cal
Readings	0.000	20.000
	0.014	0.905

Gamma Ray Calibration Report

Serial Number: GR3
Tool Model: OPEN
Performed: Tue Feb 15 22:43:17 2011

Calibrator Value: 200.0 GAPI

Background Reading:	3.0	cps
Calibrator Reading:	186.0	cps

Sensitivity: 1.1000 GAPI/cps