



**SUPERIOR**  
Hays,  
Kansas

**MICRO**  
LOG

Company MULL DRILLING CO., INC.  
Well JONES 'A' #1-30  
Field WILDCAT  
County NESS  
State KANSAS

Company MULL DRILLING COMPANY, INC.  
Well JONES 'A' #1-30  
Field WILDCAT  
County NESS  
State KANSAS

Location: API # : 15-135-25211-0000  
Permanent Datum GROUND LEVEL Elevation 2440  
Log Measured From KELLY BUSHING 5' A.G.L.  
Drilling Measured From KELLY BUSHING  
SEC 30 TWP 16S RGE 22W  
Elevation  
K.B. 2445  
D.F. 2443  
G.L. 2440

Date	2/28/11
Run Number	TWO
Depth Driller	4550
Depth Logger	4553
Bottom Logged Interval	4535
Top Log Interval	3700
Casing Driller	8 5/8" @ 227'
Casing Logger	227'
Bit Size	7 7/8
Type Fluid in Hole	CHEMICAL MUD
Density / Viscosity	9.1/54
pH / Fluid Loss	11.0/6.8
Source of Sample	FLOWLINE
Rim @ Meas. Temp	0.75 @ 60F
Rmf @ Meas. Temp	0.56 @ 60F
Rmc @ Meas. Temp	0.90 @ 60F
Source of Rmf / Rmc	MEASURED
Rim @ BHT	0.37 @ 121F
Time Circulation Stopped	2 HOURS
Time Logger on Bottom	
Maximum Recorded Temperature	121F
Equipment Number	680
Location	HAYS, KS.
Recorded By	JEFF GRONEMEG
Witnessed By	KEVIN KESSLER

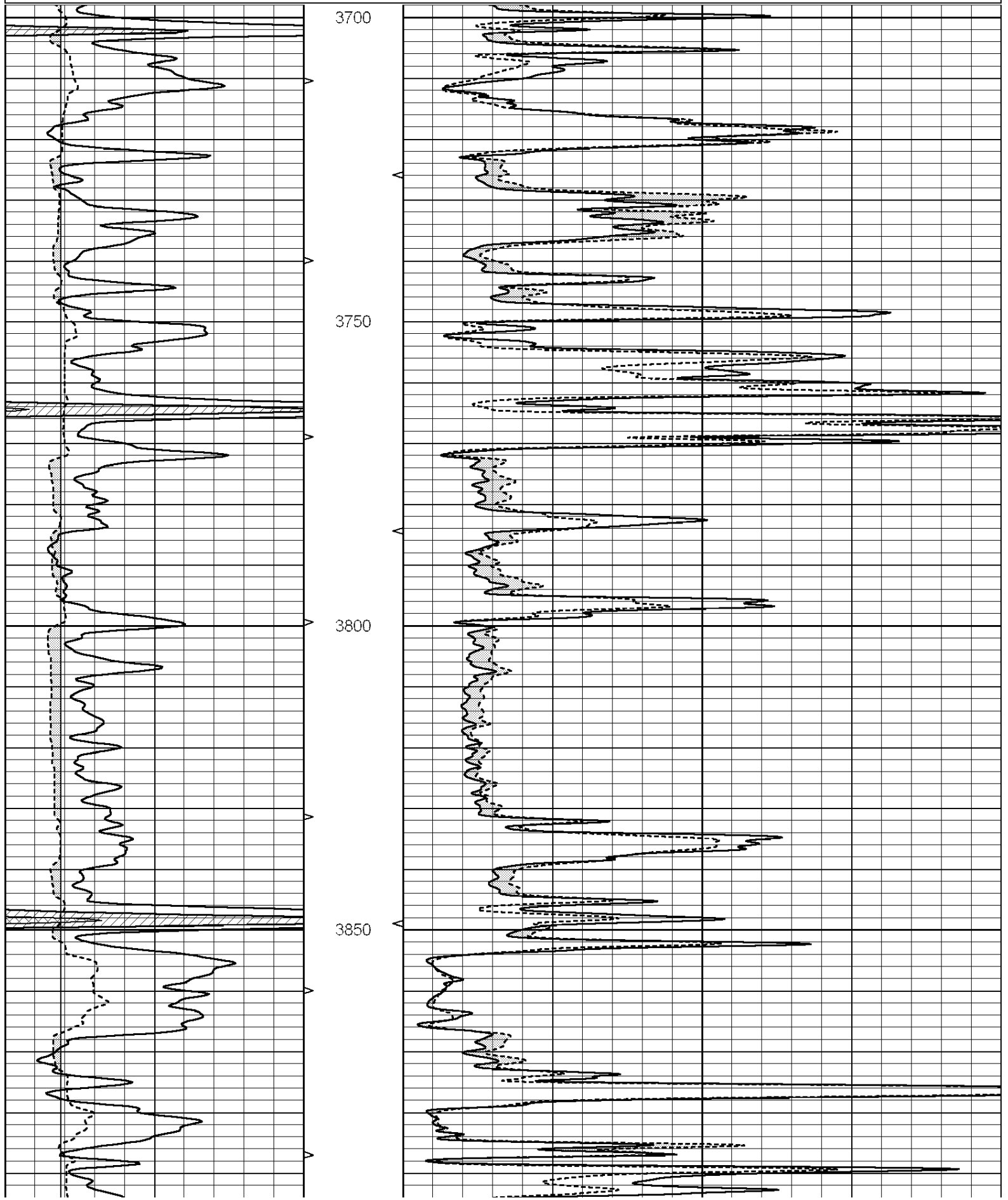
<<< Fold Here >>>

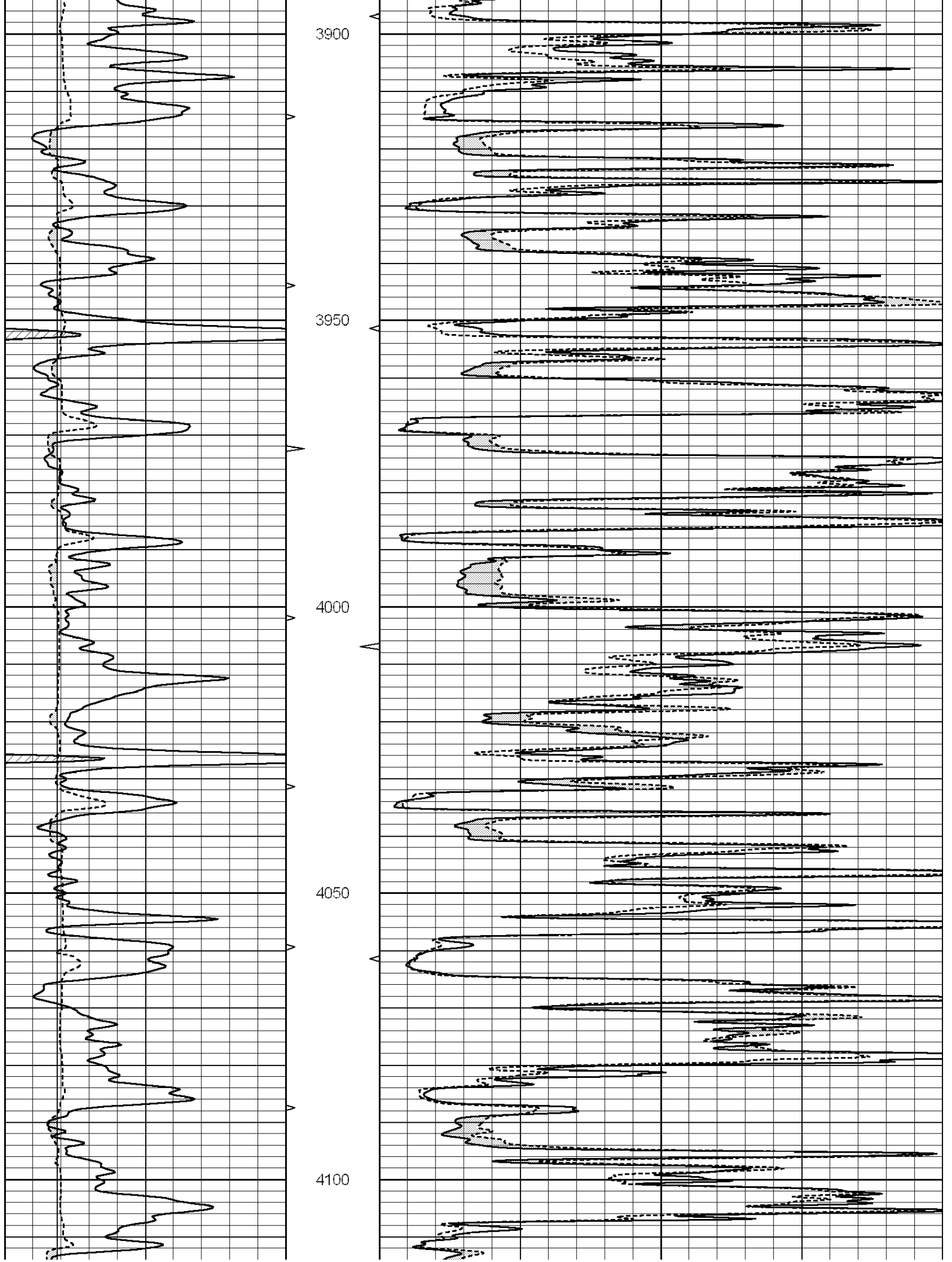
All interpretations are opinions based on inferences from electrical or other measurements and we cannot and do not guarantee the accuracy or correctness of any interpretation, and we shall not, except in the case of gross or willful negligence on our part, be liable or responsible for any loss, costs, damages, or expenses incurred or sustained by anyone resulting from any interpretation made by any of our officers, agents or employees. These interpretations are also subject to our general terms and conditions set out in our current Price Schedule.

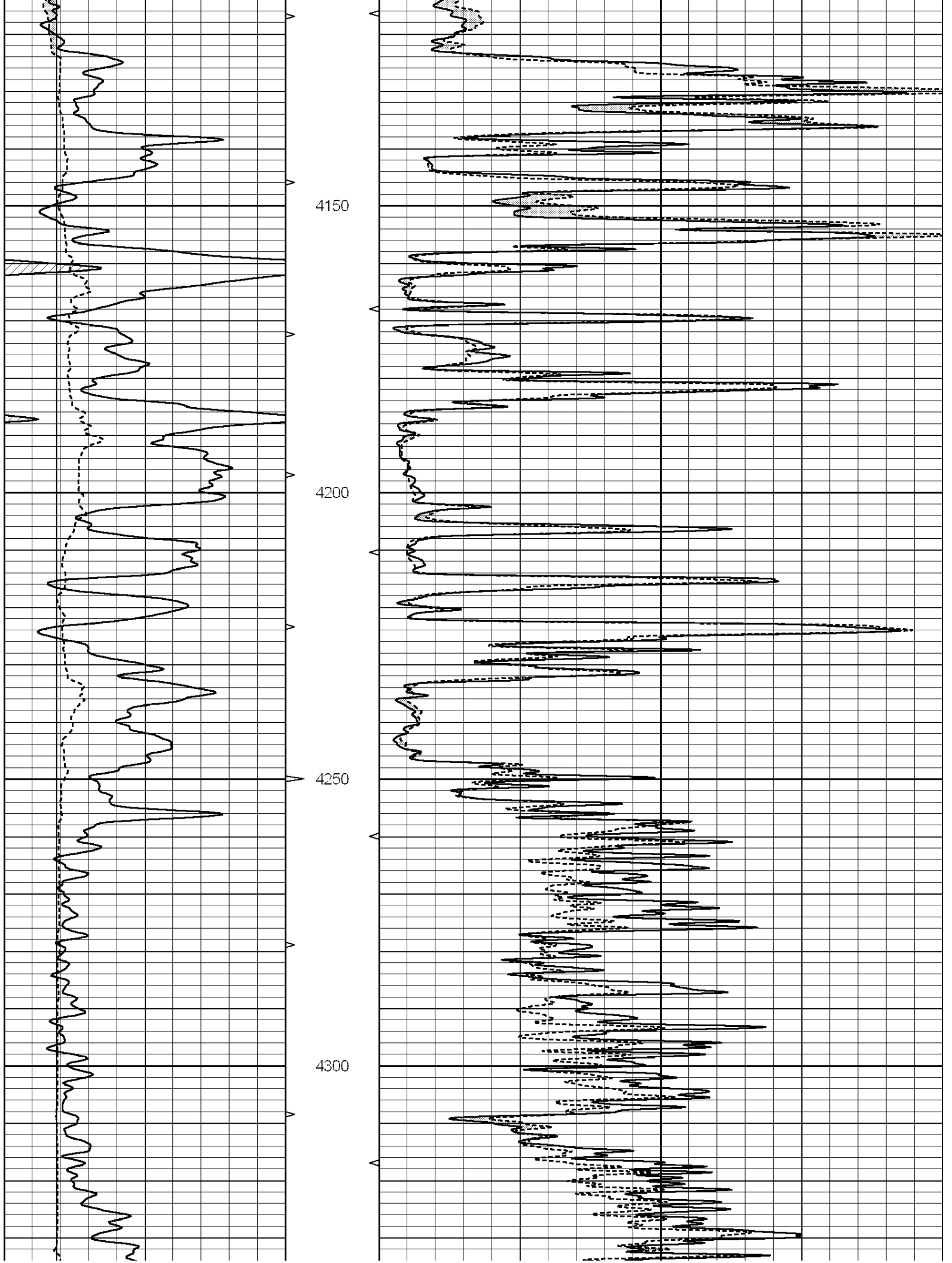
**Comments**

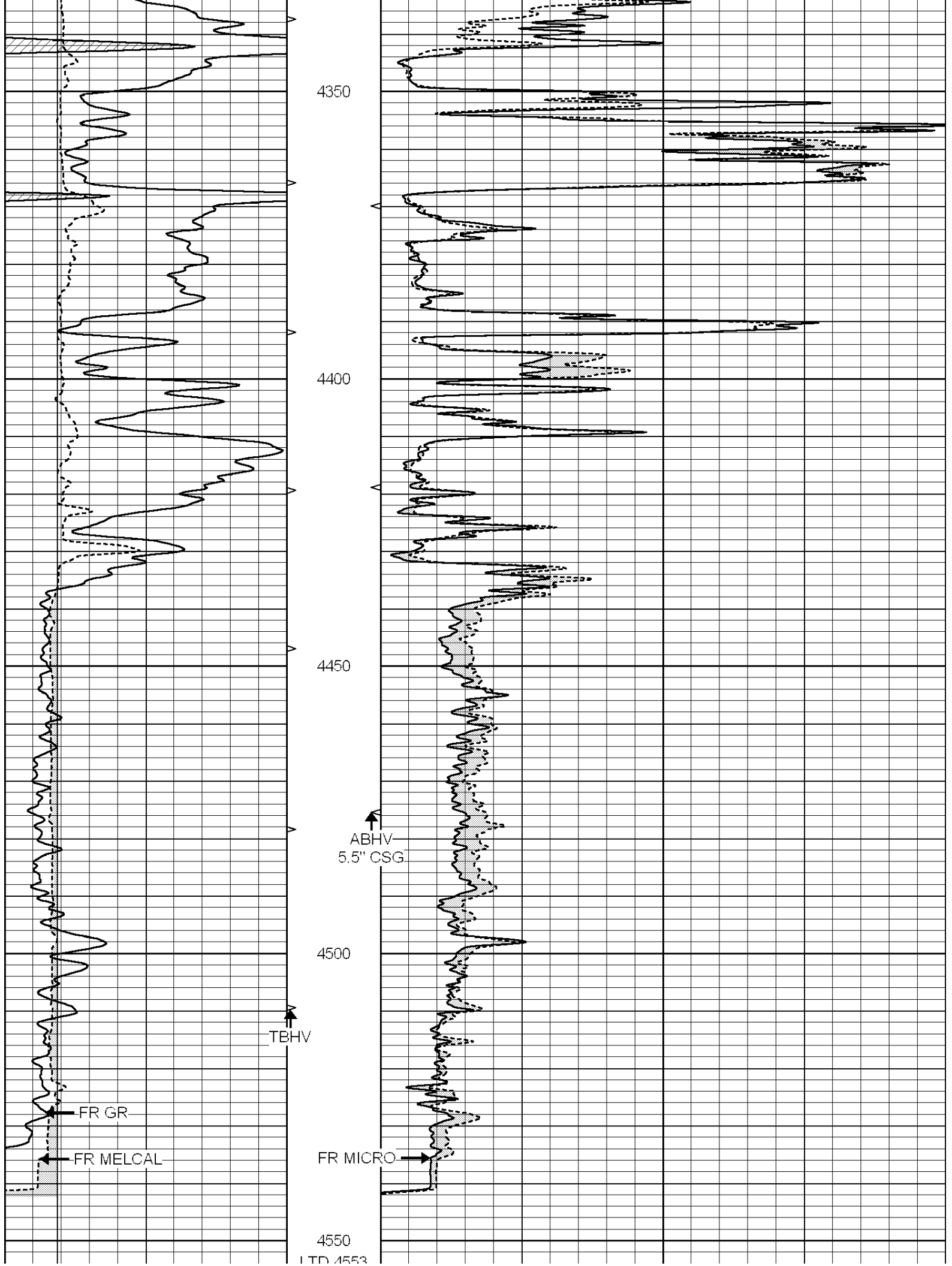
THANK YOU FOR USING SUPERIOR WELL SERVICE (785) 628-6395  
DIRECTIONS  
BROWNELL, KS - 1 1/2 MILES WEST TO RD Y - 3/4 MILE SOUTH - WEST INTO

0	GAMMA RAY (GAPI)	150	ABHV	0	MEL1.5 (Ohm-m)	40
6	CALIPER (in)	16	10 (ft3)	0 0	MEL2.0 (Ohm-m)	40
			TBHV			
			0 (ft3)			









4350

4400

4450

4500

4550

LTD. 4553

TBHV

ABHV  
5.5" CSG

FR GR

FR MELCAL

FR MICRO

0	GAMMA RAY (GAPI)	150	ABHV	0	MEL1.5 (Ohm-m)	40
6	CALIPER (in)	16	10 (ft3) 0 0	0	MEL2.0 (Ohm-m)	40
			TBHV			
			0 (ft3) 10			

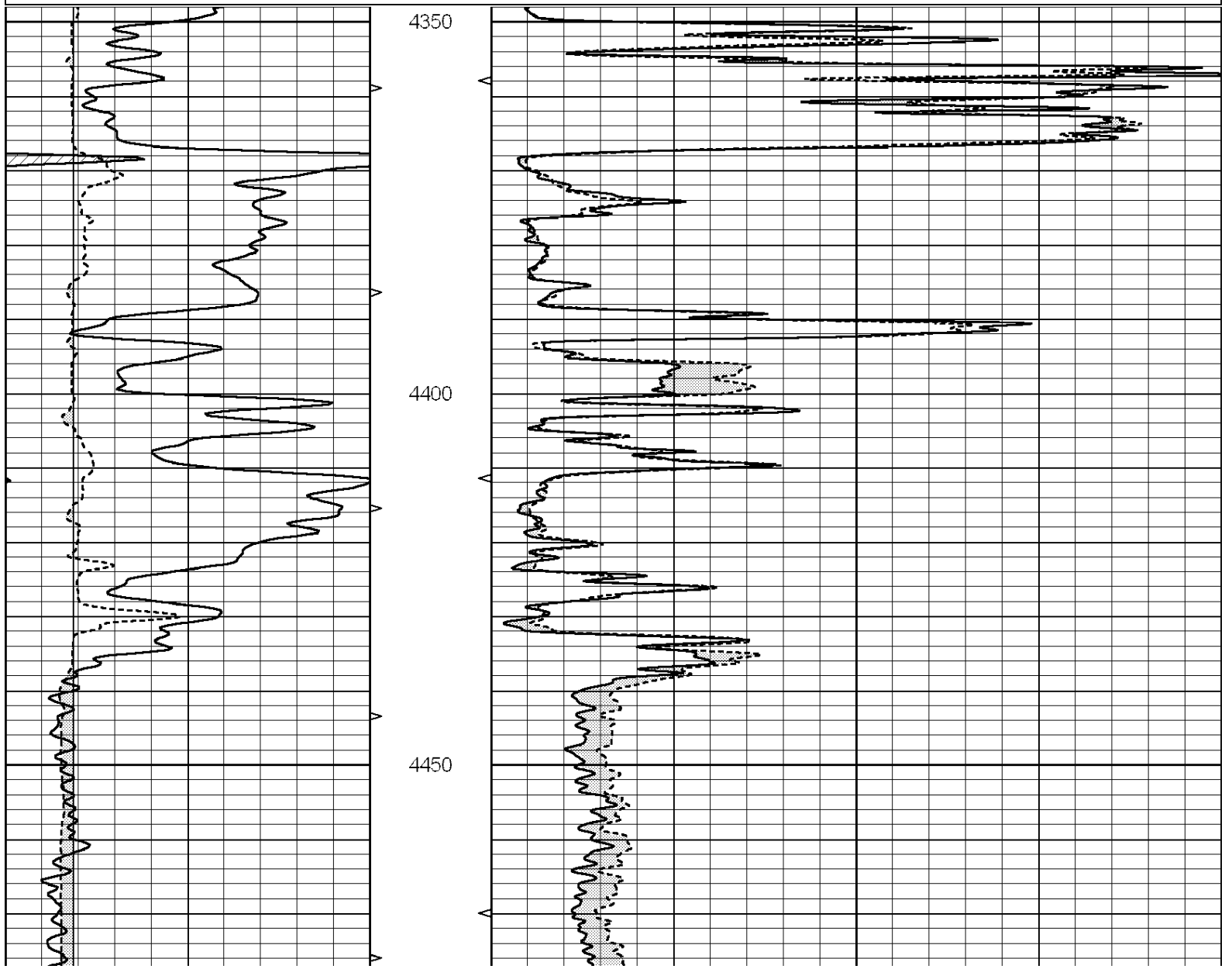


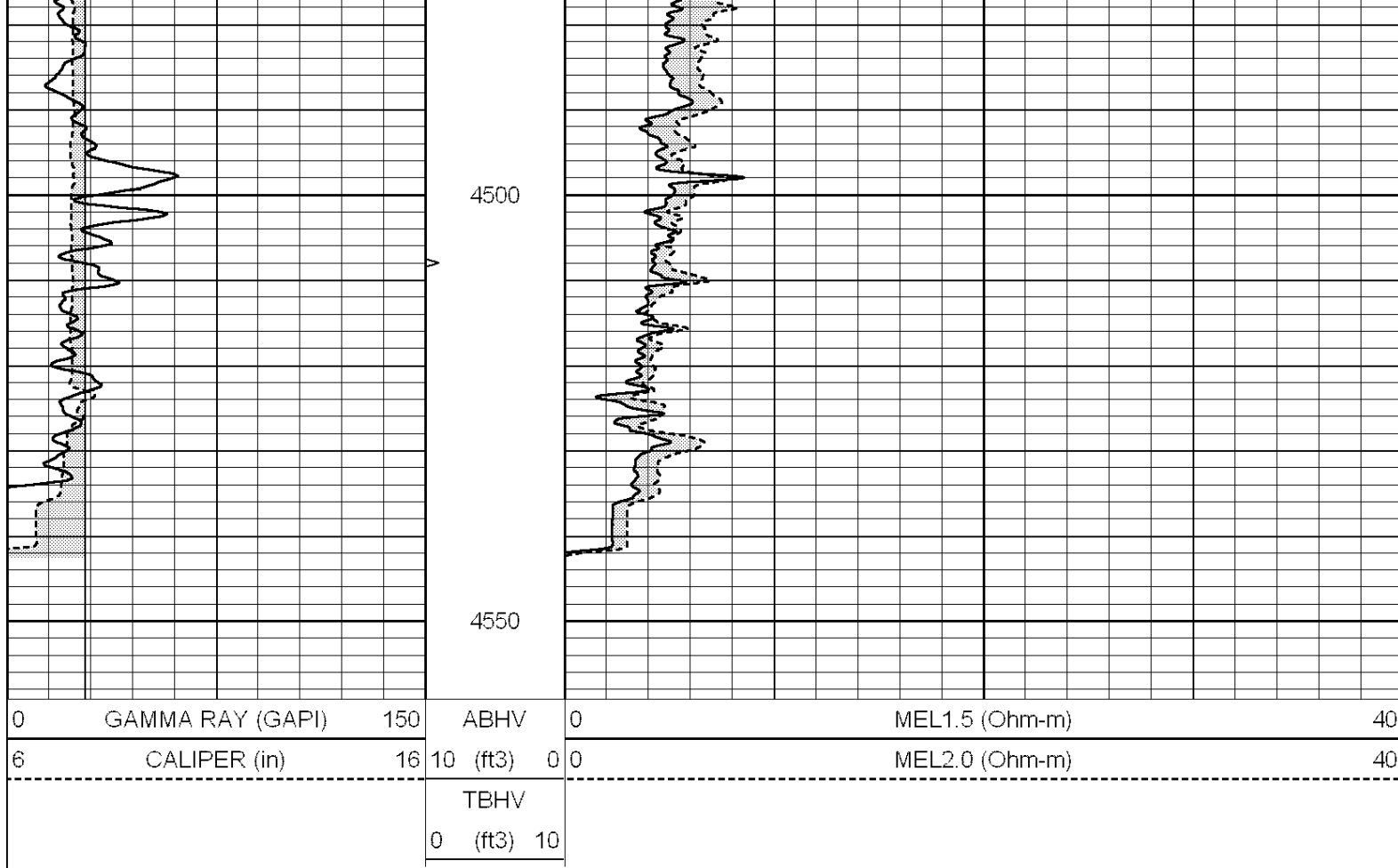
SUPERIOR  
Hays,  
Kansas

# REPEAT SECTION

Database File: 006700pe.db  
 Dataset Pathname: pass5.1  
 Presentation Format: \_micro  
 Dataset Creation: Mon Feb 28 11:17:36 2011 by Calc Open-Cased 090629  
 Charted by: Depth in Feet scaled 1:240

0	GAMMA RAY (GAPI)	150	ABHV	0	MEL1.5 (Ohm-m)	40
6	CALIPER (in)	16	10 (ft3) 0 0	0	MEL2.0 (Ohm-m)	40
			TBHV			
			0 (ft3) 10			





### Calibration Report

Database File: 006700pe.db  
 Dataset Pathname: pass6.1  
 Dataset Creation: Mon Feb 28 11:42:05 2011 by Calc Open-Cased 090629

### MICRO Calibration Report

Serial Number: MICRO6  
 Tool Model: PROBE  
 Performed: Mon Feb 21 21:46:51 2011

Caliper Calibration: Gain=5.211      Offset=1.360

	Low Cal	High Cal
References	8.000	14.000
Readings	1.178	2.330

1.5" Calibration: Gain=35.000      Offset=-0.650

	Low Cal	High Cal
References	0.000	20.000
Readings	0.008	1.200

2" Calibration: Gain=32.000      Offset=0.000

	Low Cal	High Cal
References	0.000	20.000
Readings	0.008	0.888

### Gamma Ray Calibration Report

Serial Number: #8  
 Tool Model: OPEN  
 Performed: Fri Feb 18 03:07:29 2011

Calibrator Value:	150.0	GAPI
Background Reading:	0.0	cps
Calibrator Reading:	175.0	cps
Sensitivity:	0.8971	GAPI/cps