



SUPERIOR
Hays,
Kansas

COMPENSATED
DENSITY / NEUTRON
PE LOG

Company MULL DRILLING CO., INC.
Well JONES 'A' #1-30
Field WILDCAT
County NESS
State KANSAS

Company MULL DRILLING COMPANY, INC.
Well JONES 'A' #1-30
Field WILDCAT
County NESS State KANSAS

Location: API # : 15-135-25211-0000
1249' FSL & 1136' FEL
NW - NW - SE - SE
SEC 30 TWP 16S RGE 22W
Permanent Datum GROUND LEVEL Elevation 2440
Log Measured From KELLY BUSHING 5' A.G.L.
Drilling Measured From KELLY BUSHING
Other Services
DIL
MEL/SON
Elevation
K.B. 2445
D.F. 2443
G.L. 2440

Date	2/28/11		
Run Number	ONE		
Depth Driller	4550		
Depth Logger	4553		
Bottom Logged Interval	4529		
Top Log Interval	3700		
Casing Driller	8 5/8" @ 227'		
Casing Logger	227'		
Bit Size	7 7/8		
Type Fluid in Hole	CHEMICAL MUD	CHLORIDES 1700 PPM	
Density / Viscosity	9.1/54		
pH / Fluid Loss	11.0/6.8		
Source of Sample	FLOWLINE		
Rin @ Meas. Temp	0.75 @ 60F		
Rmf @ Meas. Temp	0.56 @ 60F		
Rmc @ Meas. Temp	0.90 @ 60F		
Source of Rmf / Rmc	MEASURED		
Rin @ BHT	0.37 @ 121F		
Time Circulation Stopped	2 HOURS		
Time Logger on Bottom			
Maximum Recorded Temperature	121F		
Equipment Number	680		
Location	HAYS, KS.		
Recorded By	JEFF GRONEMEG		
Witnessed By	KEVIN KESSLER		

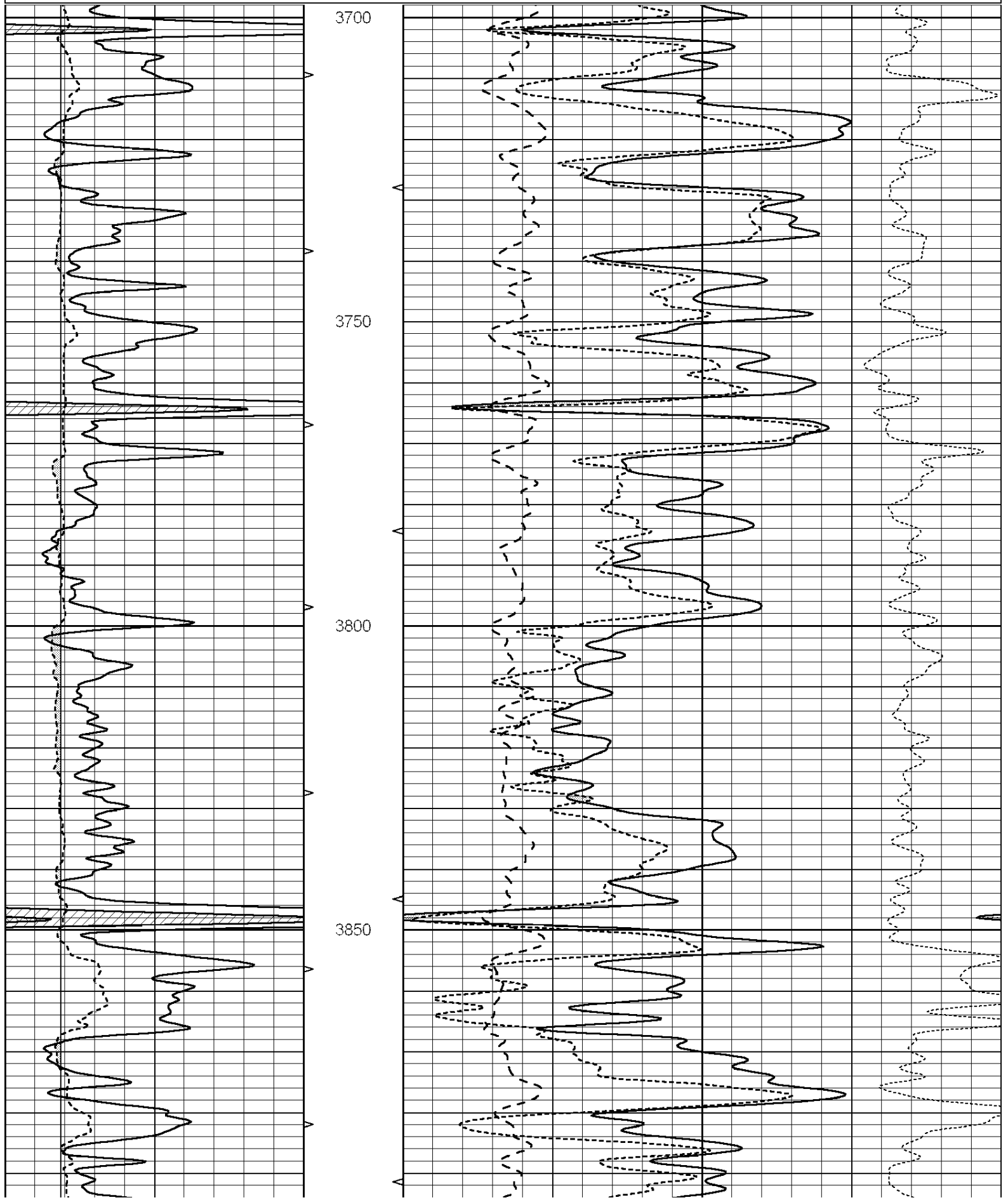
<<< Fold Here >>>

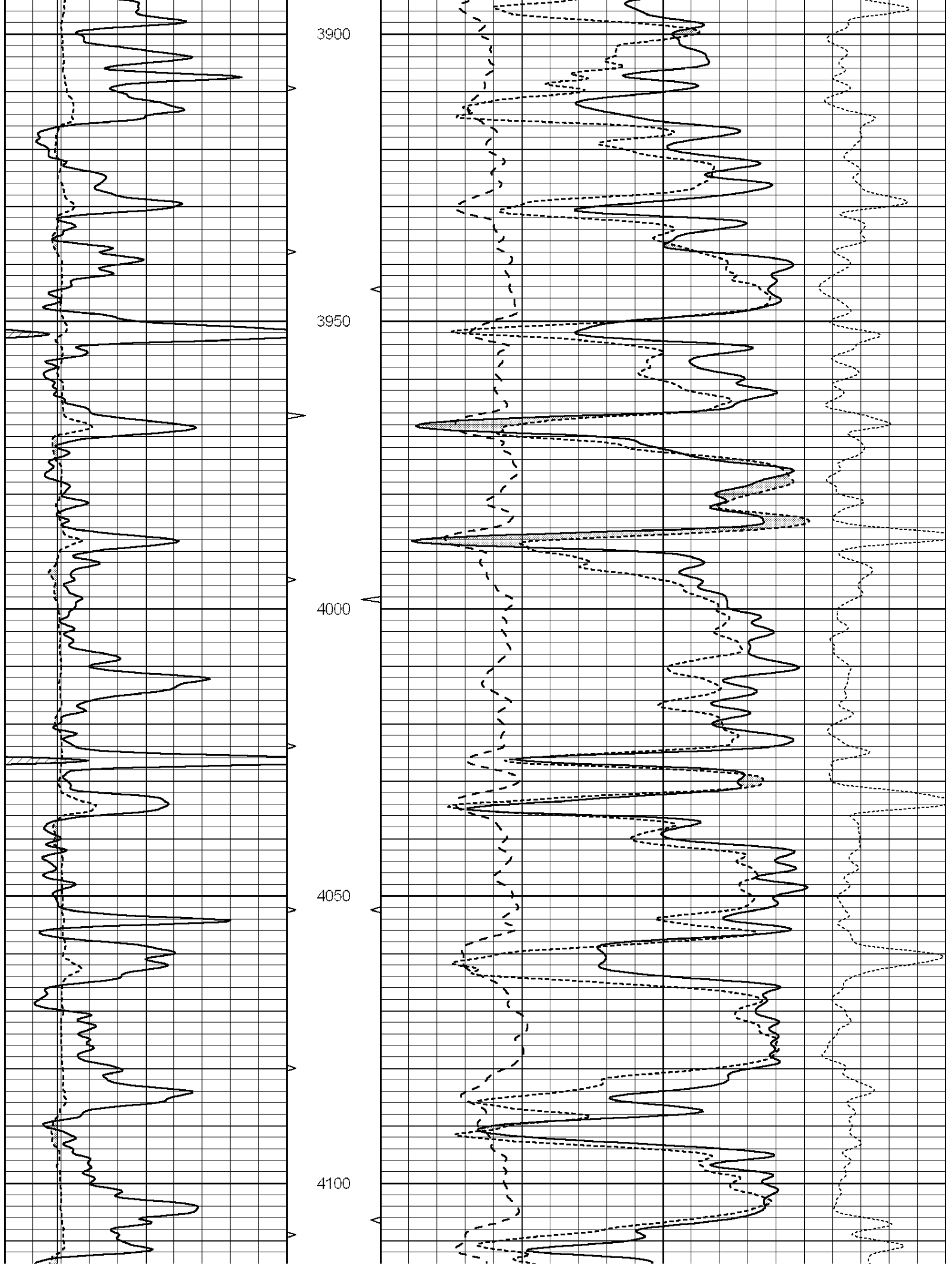
All interpretations are opinions based on inferences from electrical or other measurements and we cannot and do not guarantee the accuracy or correctness of any interpretation, and we shall not, except in the case of gross or willful negligence on our part, be liable or responsible for any loss, costs, damages, or expenses incurred or sustained by anyone resulting from any interpretation made by any of our officers, agents or employees. These interpretations are also subject to our general terms and conditions set out in our current Price Schedule.

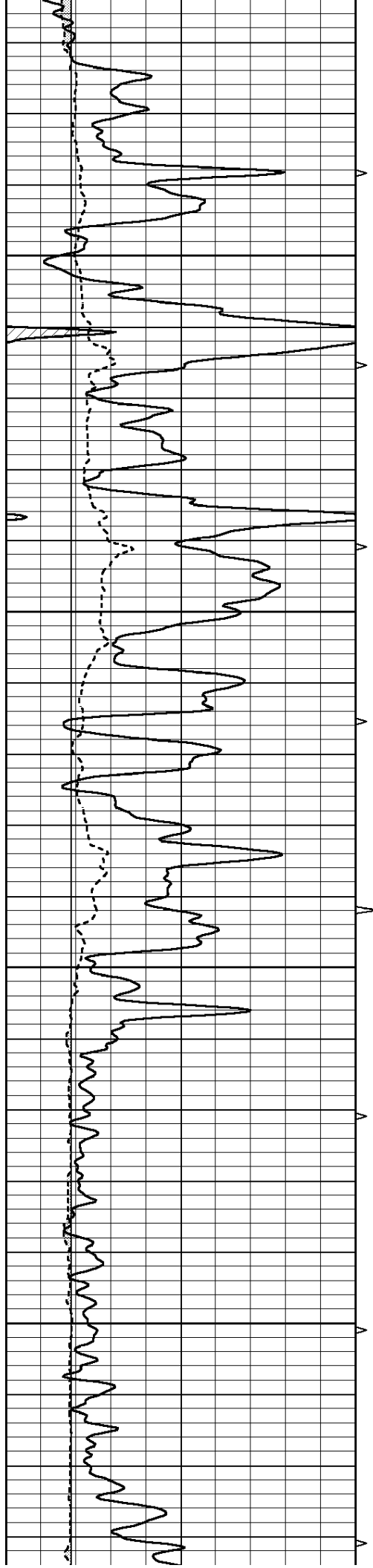
Comments

THANK YOU FOR USING SUPERIOR WELL SERVICE (785) 628-6395
DIRECTIONS
BROWNELL, KS - 1 1/2 MILES WEST TO RD Y - 3/4 MILE SOUTH - WEST INTO

0	GAMMA RAY (GAPI)	150	ABHV	30	COMPENSATED DENSITY (pu)	-10
6	CALIPER (in)	16	10 (ft3)	0	COMPENSATED NEUTRON (pu)	-10
			TBHV	0	PE	10 -0.25
			0 (ft3)	10	CORRECTION (g/cc)	0.25





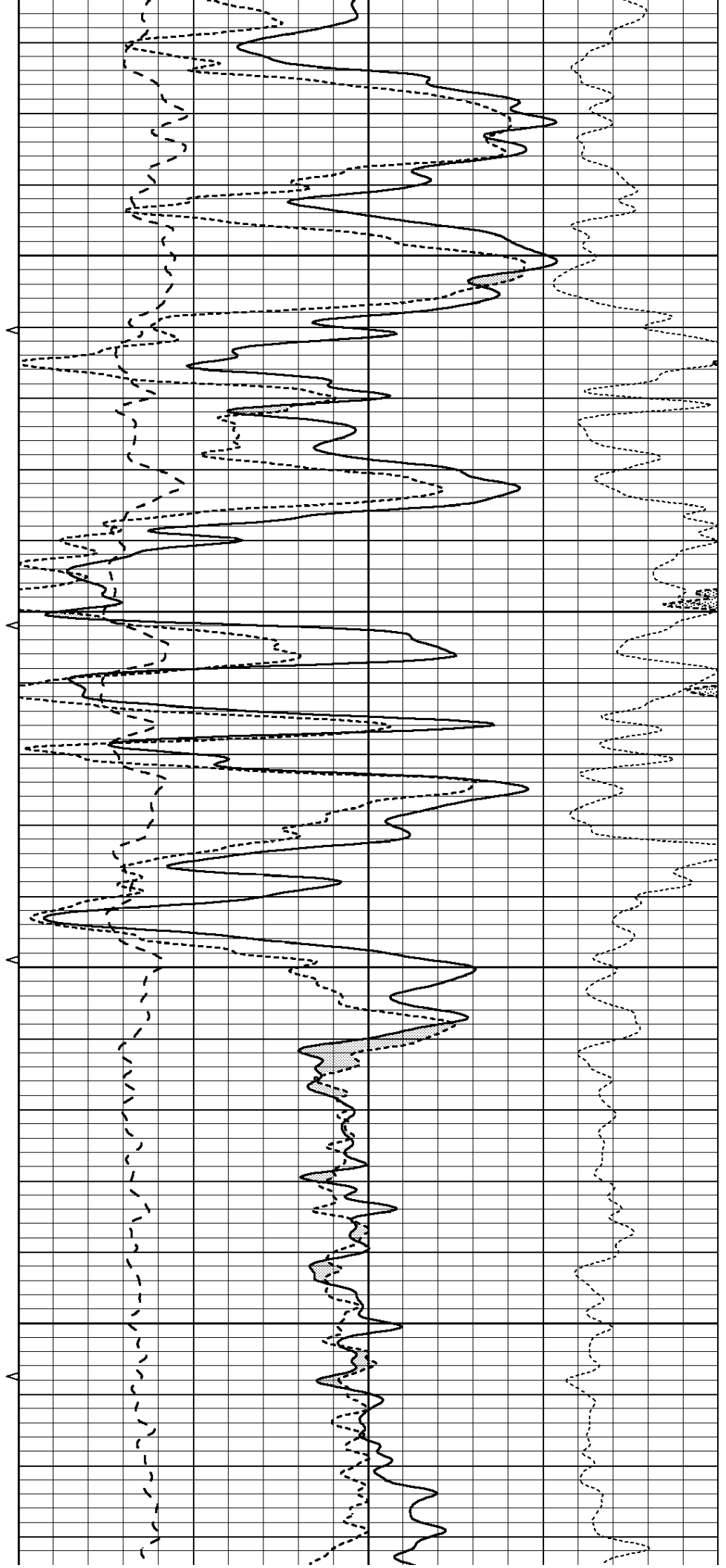


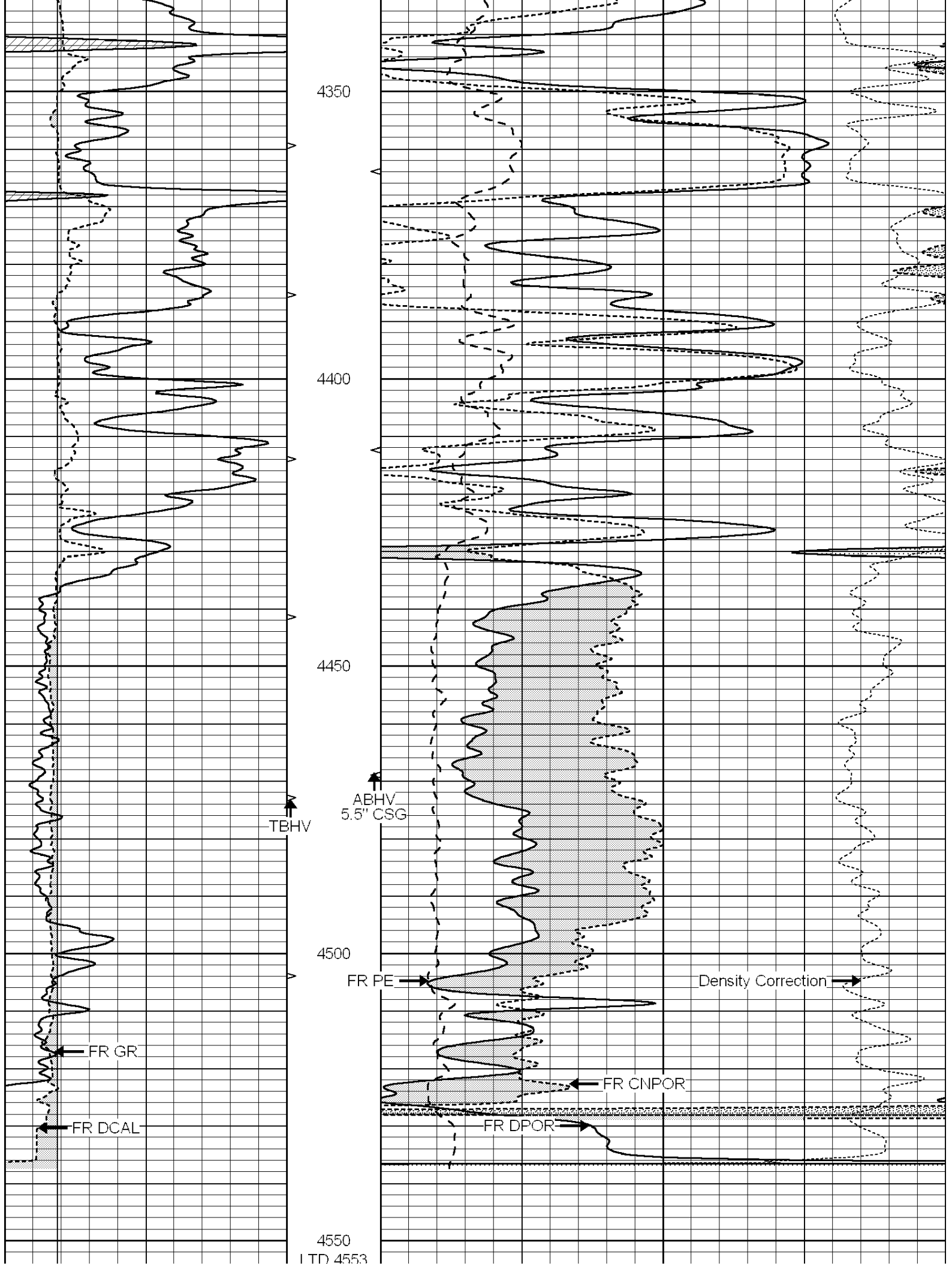
4150

4200

4250

4300





0	GAMMA RAY (GAPI)	150	ABHV	30	COMPENSATED DENSITY (pu)	-10		
6	CALIPER (in)	16	10 (ft3)	0	30	COMPENSATED NEUTRON (pu)	-10	
			TBHV	0	PE	10 -0.25	CORRECTION (g/cc)	0.25
			0 (ft3)	10				

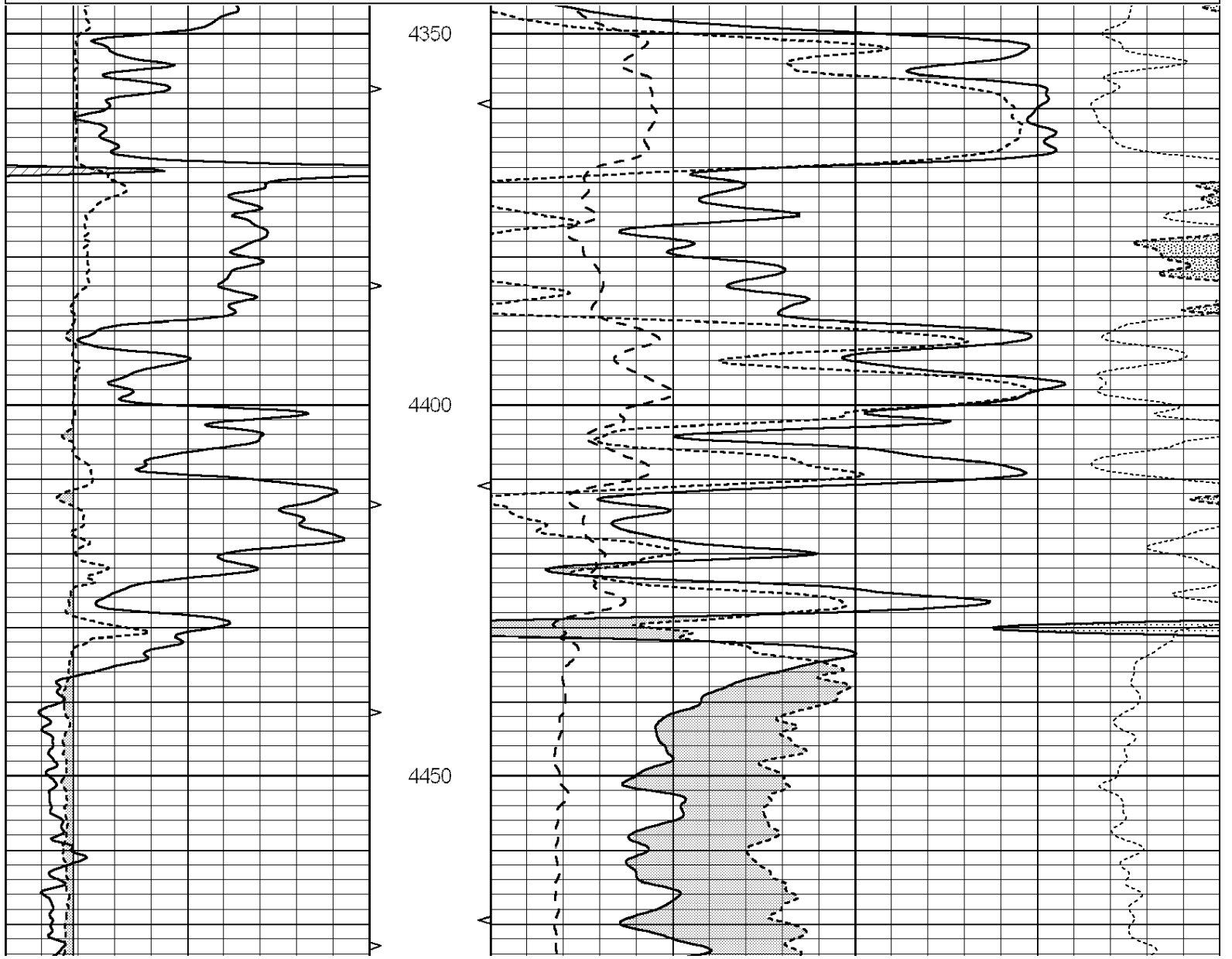


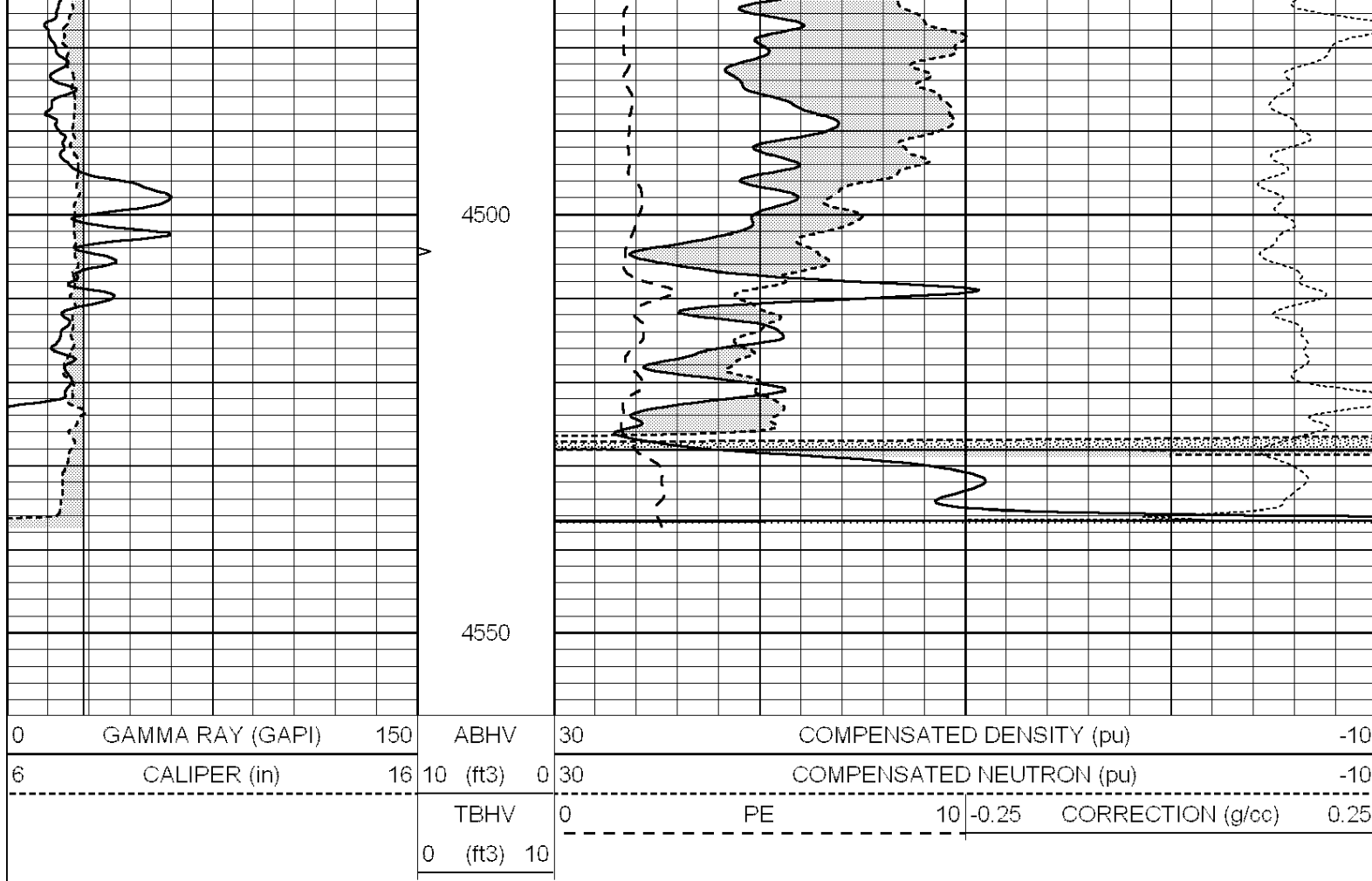
SUPERIOR
Hays,
Kansas

REPEAT SECTION

Database File: 006700pe.db
 Dataset Pathname: pass2.2
 Presentation Format: _ldt_neu
 Dataset Creation: Mon Feb 28 09:52:41 2011 by Calc Open-Cased 090629
 Charted by: Depth in Feet scaled 1:240

0	GAMMA RAY (GAPI)	150	ABHV	30	COMPENSATED DENSITY (pu)	-10		
6	CALIPER (in)	16	10 (ft3)	0	30	COMPENSATED NEUTRON (pu)	-10	
			TBHV	0	PE	10 -0.25	CORRECTION (g/cc)	0.25
			0 (ft3)	10				





Calibration Report

Database File: 006700pe.db
 Dataset Pathname: pass3.2
 Dataset Creation: Mon Feb 28 09:47:13 2011 by Calc Open-Cased 090629

Dual Induction Calibration Report

Serial-Model: PROBE7-DILG
 Surface Cal Performed: Wed Jul 30 06:14:24 2008
 Downhole Cal Performed: Mon Jul 28 12:02:56 2008
 After Survey Verification Performed: Mon Jul 28 12:02:56 2008

Surface Calibration								
Loop:	Readings			References			Results	
	Air	Loop		Air	Loop		m	b
Deep	-0.014	0.629	V	0.000	400.000	mmho/m	621.923	8.759
Medium	0.039	0.728	V	0.000	464.000	mmho/m	673.322	-26.058
Internal:	Zero	Cal		Zero	Cal		m	b
Deep	0.011	0.610	V	0.000	400.000	mmho/m	667.135	-7.256
Medium	0.005	0.712	V	0.000	464.000	mmho/m	655.677	-3.102

Downhole Calibration								
	Readings			References			Results	
	Zero	Cal		Zero	Cal		m'	b'
Deep	0.000	0.000	mmho/m	14.508	388.384	mmho/m	1.000	0.000
Medium	0.000	0.000	mmho/m	166.367	504.400	mmho/m	1.000	0.000
LL3		7.500	V		1400.000	Ohm-m		
		0.000	V		20.000	Ohm-m		

After Survey Verification								
	Readings			Targets			Results	
	Zero	Cal		Zero	Cal		m'	b'
Deep	0.000	0.000	mmho/m	0.000	0.000	mmho/m	0.000	0.000
Medium	0.000	0.000	mmho/m	0.000	0.000	mmho/m	0.000	0.000
LL3		1.000	Ohm-m		1.000	Ohm-m		
		0.000	Ohm-m		0.000	Ohm-m		
		1.000	mmho-m		1.000	mmho-m		

Litho Density Calibration Report
 Serial: 002 Model: PRB
 Performed Mon Oct 29 15:40:49 2007

Litho Density Calibration						
	Background	Magnesium	Aluminum	Sandstone		
Window 1	1056.3	9118.0	2809.7	10378.4		cps
Window 2	969.9	7671.9	2431.6	8565.8		cps
Window 3	683.8	2939.8	1161.0	3161.8		cps
Window 4	231.4	231.6	226.7	230.8		cps
Long Space	0.0	6702.0	1461.7	7595.9		cps
Short Space	1.2	1433.6	959.4	1568.6		cps
Rho		1.7100	2.5900	1.3800		g/cc
Pe			2.5700	1.5500		
Rib Angle	: 45.2	Rib Slope	: 1.008	Density/Spine Ratio		: 0.559
Spine Angle	: 75.2	Spine Slope	: 3.791	Spine Intercept		: -18.7

Caliper		
	Readings	Reference
Low Ref	2.8	8.0
High Ref	5.0	14.0
	Gain: 2.7	Offset: -2.0

Compensated Neutron Calibration Report

Serial Number: 6I
 Tool Model: G

CALIBRATION						
	Detector	Readings		Target		Normalization
	Short Space	1.00	cps	1.00	cps	1.0000
	Long Space	1.00	cps	1.00	cps	1.0000

Gamma Ray Calibration Report

Serial Number: #8
 Tool Model: OPEN
 Performed: Fri Feb 18 03:07:29 2011

Calibrator Value: 150.0 GAPI

Background Reading: 0.0 cps
 Calibrator Reading: 175.0 cps

Sensitivity: 0.8971 GAPI/cps