



SUPERIOR
Hays,
Kansas

SONIC
LOG

Company MULL DRILLING CO., INC.
Well JONES 'A' #1-30
Field WILDCAT
County NESS
State KANSAS

Company MULL DRILLING COMPANY, INC.
Well JONES 'A' #1-30
Field WILDCAT
County NESS
State KANSAS

Location: API # : 15-135-25211-0000
1249' FSL & 1136' FEL
NW - NW - SE - SE
SEC 30 TWP 16S RGE 22W
Permanent Datum GROUND LEVEL Elevation 2440
Log Measured From KELLY BUSHING 5' A.G.L.
Drilling Measured From KELLY BUSHING
Other Services
CDL/CNL/PE
DIL/MEL
Elevation
K.B. 2445
D.F. 2443
G.L. 2440

Date	2/28/11
Run Number	TWO
Depth Driller	4550
Depth Logger	4553
Bottom Logged Interval	4546
Top Log Interval	200
Casing Driller	8 5/8" @ 227'
Casing Logger	227'
Bit Size	7 7/8
Type Fluid in Hole	CHEMICAL MUD
Density / Viscosity	9.1/54
pH / Fluid Loss	11.0/6.8
Source of Sample	FLOWLINE
Rim @ Meas. Temp	0.75 @ 60F
Rmf @ Meas. Temp	0.56 @ 60F
Rmc @ Meas. Temp	0.90 @ 60F
Source of Rmf / Rmc	MEASURED
Rim @ BHT	0.37 @ 121F
Time Circulation Stopped	2 HOURS
Time Logger on Bottom	
Maximum Recorded Temperature	121F
Equipment Number	680
Location	HAYS, KS.
Recorded By	JEFF GRONEMEG
Witnessed By	KEVIN KESSLER

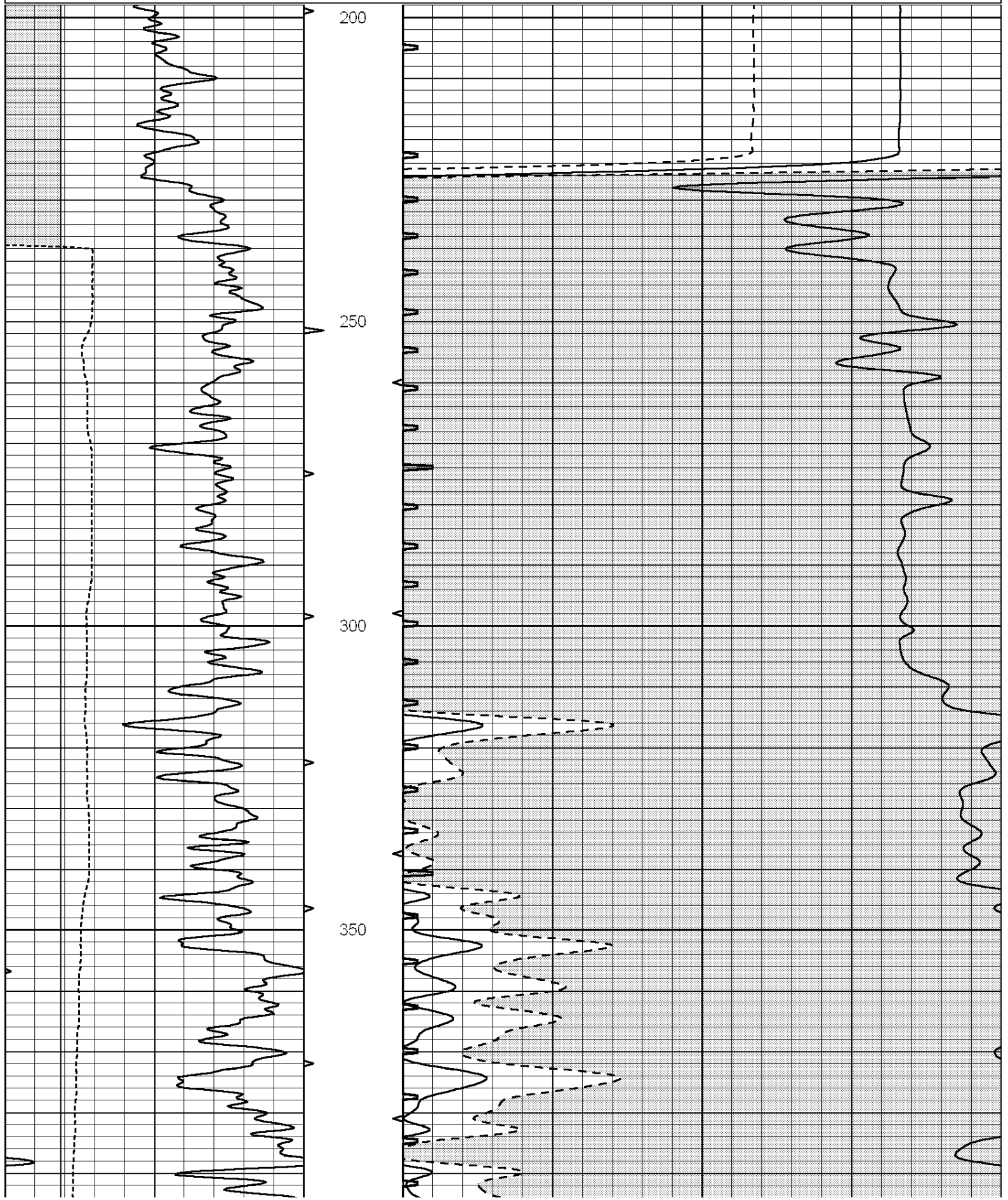
<<< Fold Here >>>

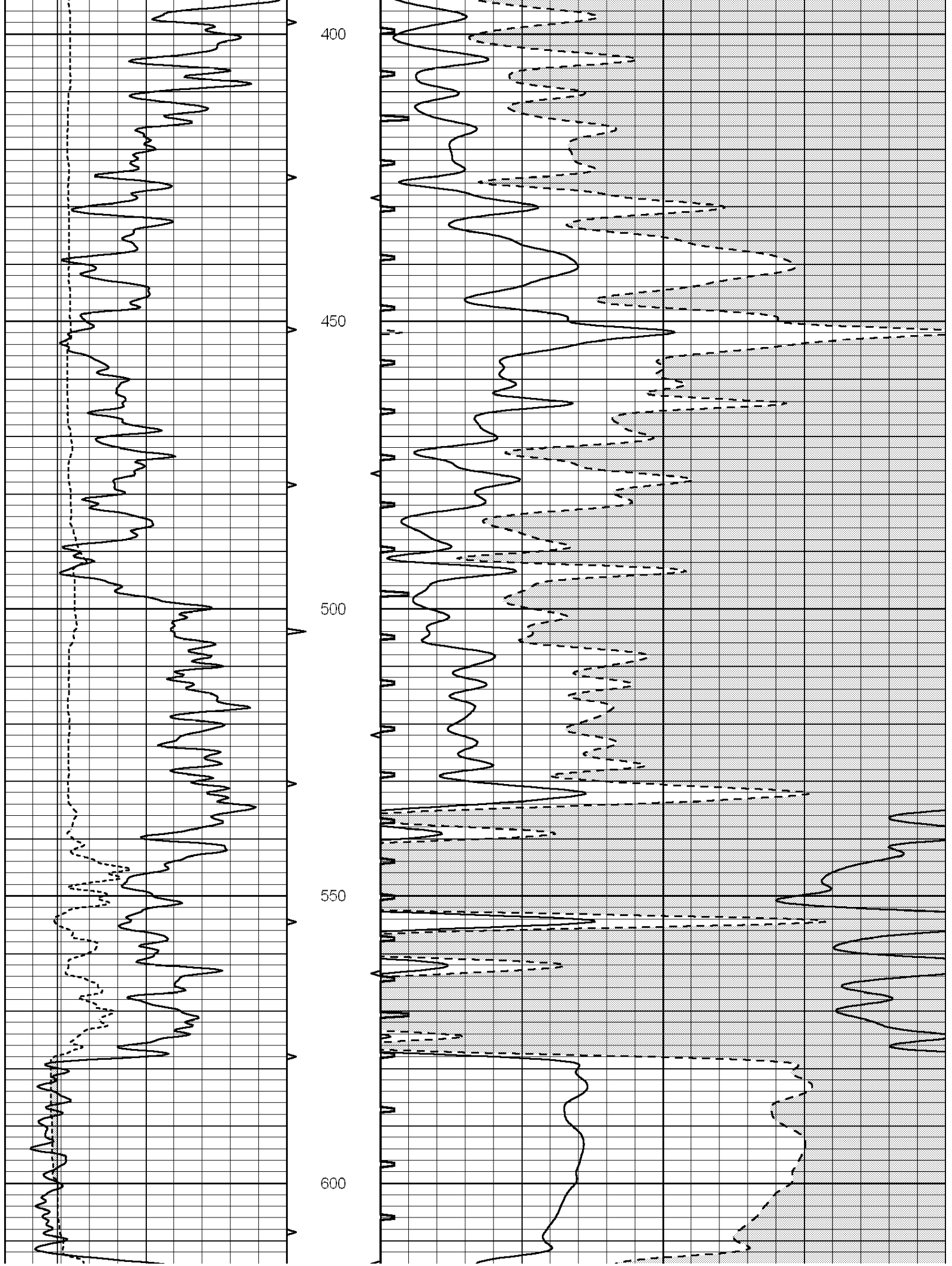
All interpretations are opinions based on inferences from electrical or other measurements and we cannot and do not guarantee the accuracy or correctness of any interpretation, and we shall not, except in the case of gross or willful negligence on our part, be liable or responsible for any loss, costs, damages, or expenses incurred or sustained by anyone resulting from any interpretation made by any of our officers, agents or employees. These interpretations are also subject to our general terms and conditions set out in our current Price Schedule.

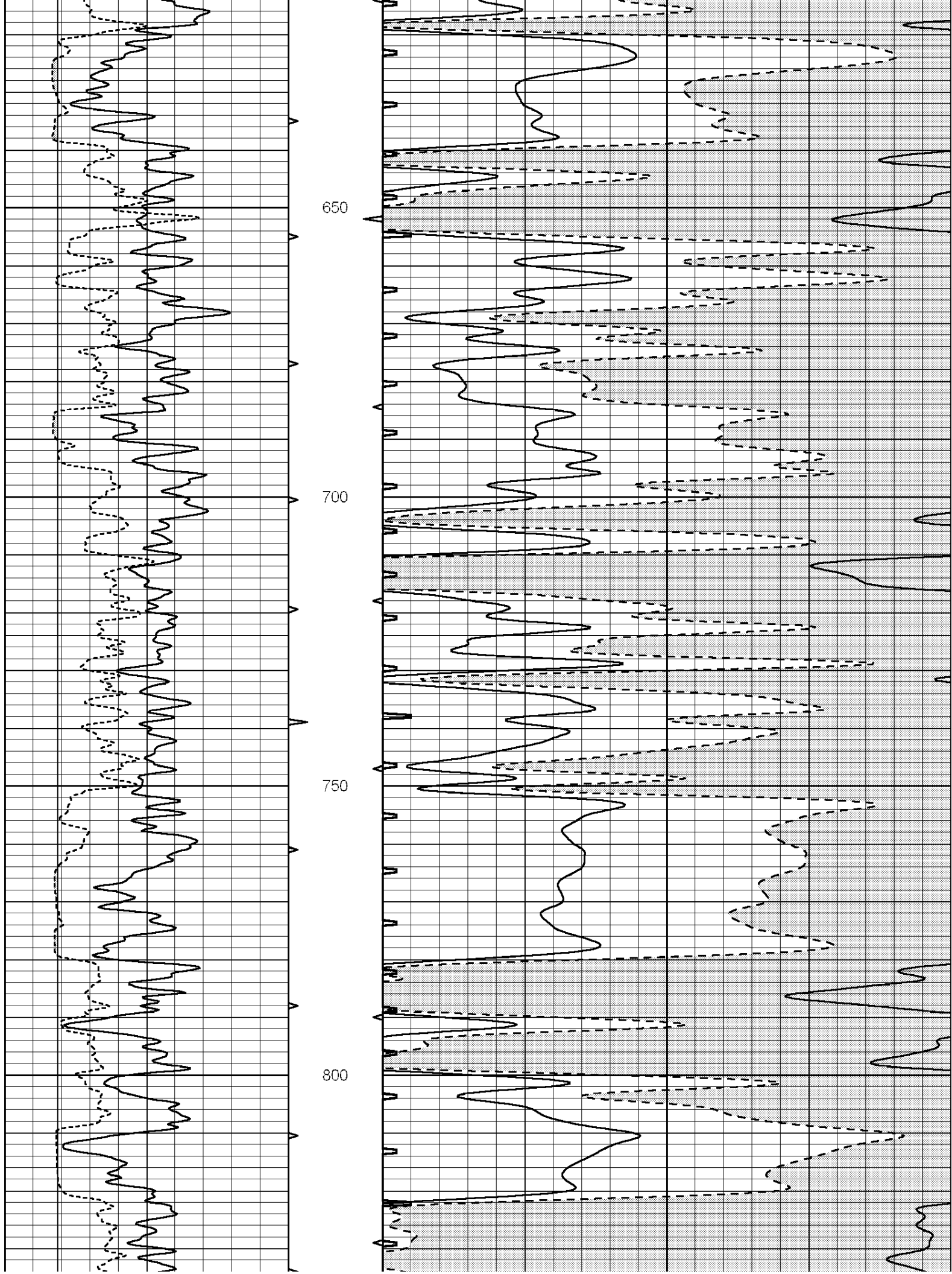
Comments

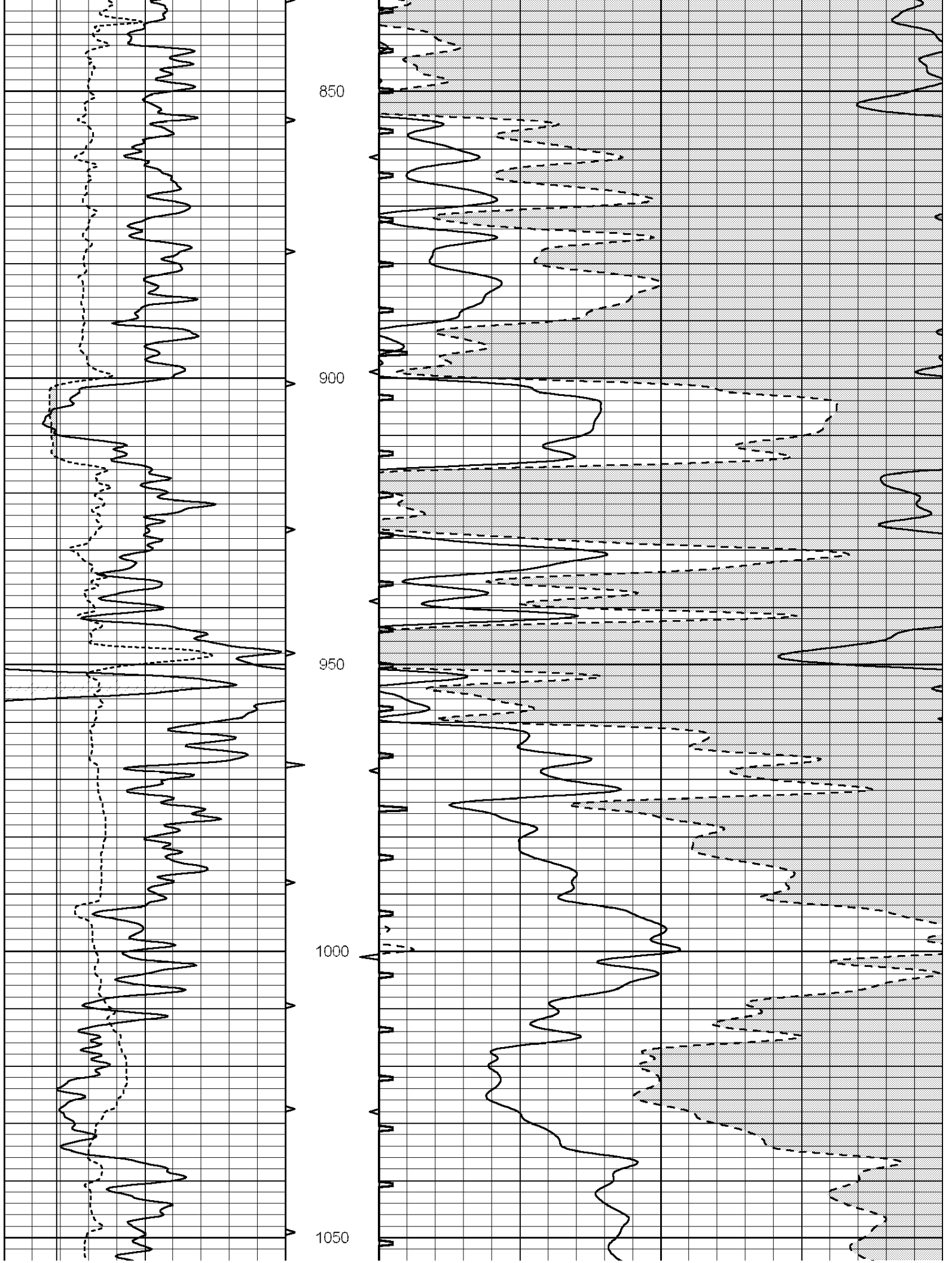
THANK YOU FOR USING SUPERIOR WELL SERVICE (785) 628-6395
DIRECTIONS
BROWNELL, KS - 1 1/2 MILES WEST TO RD Y - 3/4 MILE SOUTH - WEST INTO

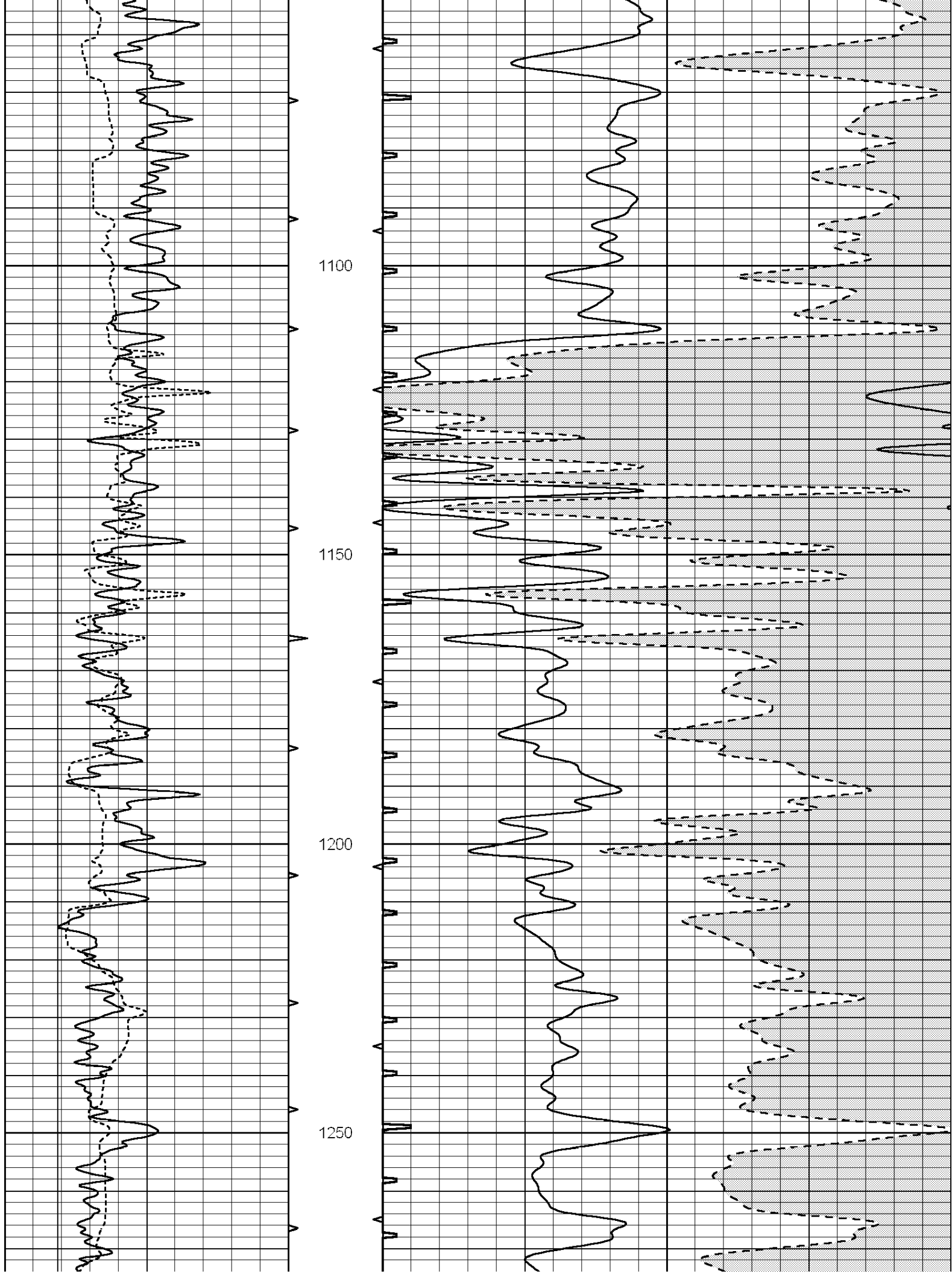
0	GAMMA RAY (GAPI)	150	ABHV	140	DELTA TIME (usec/ft)	40
6	CALIPER (in)	16	10 (ft3) 0	30	SONIC POROSITY (pu)	-10
			TBHV	0	ITT (msec)	20
			0 (ft3) 10			

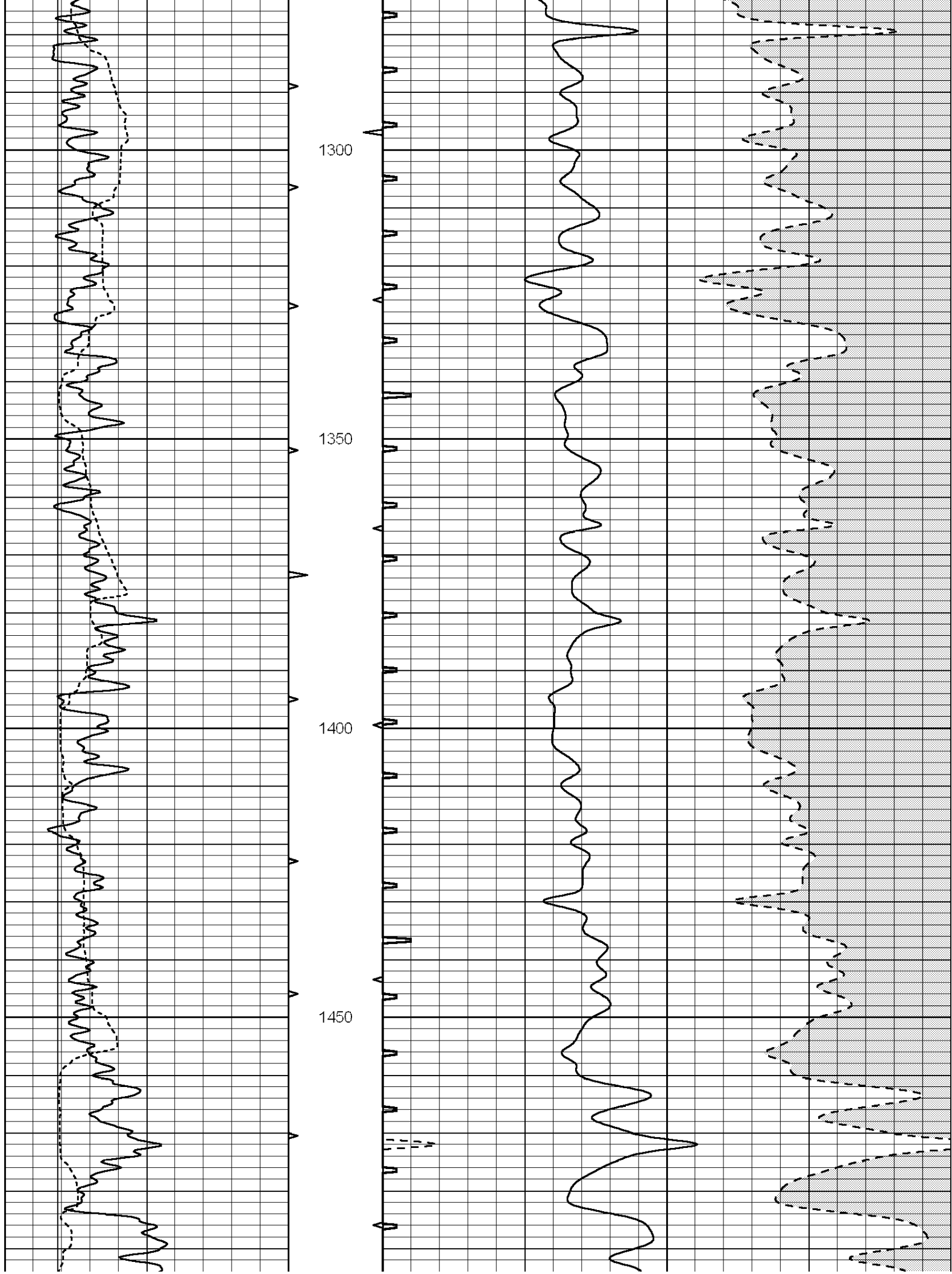


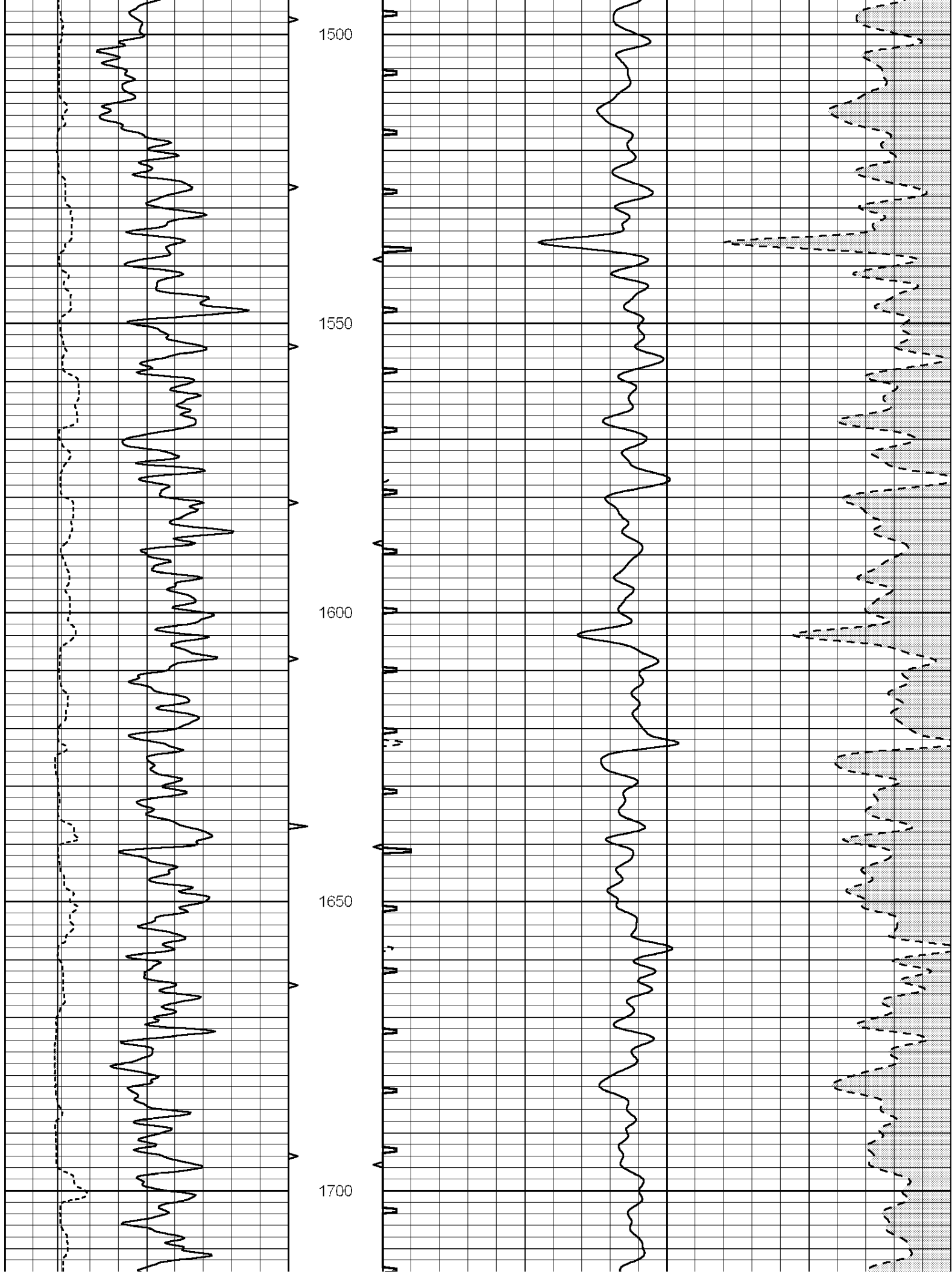


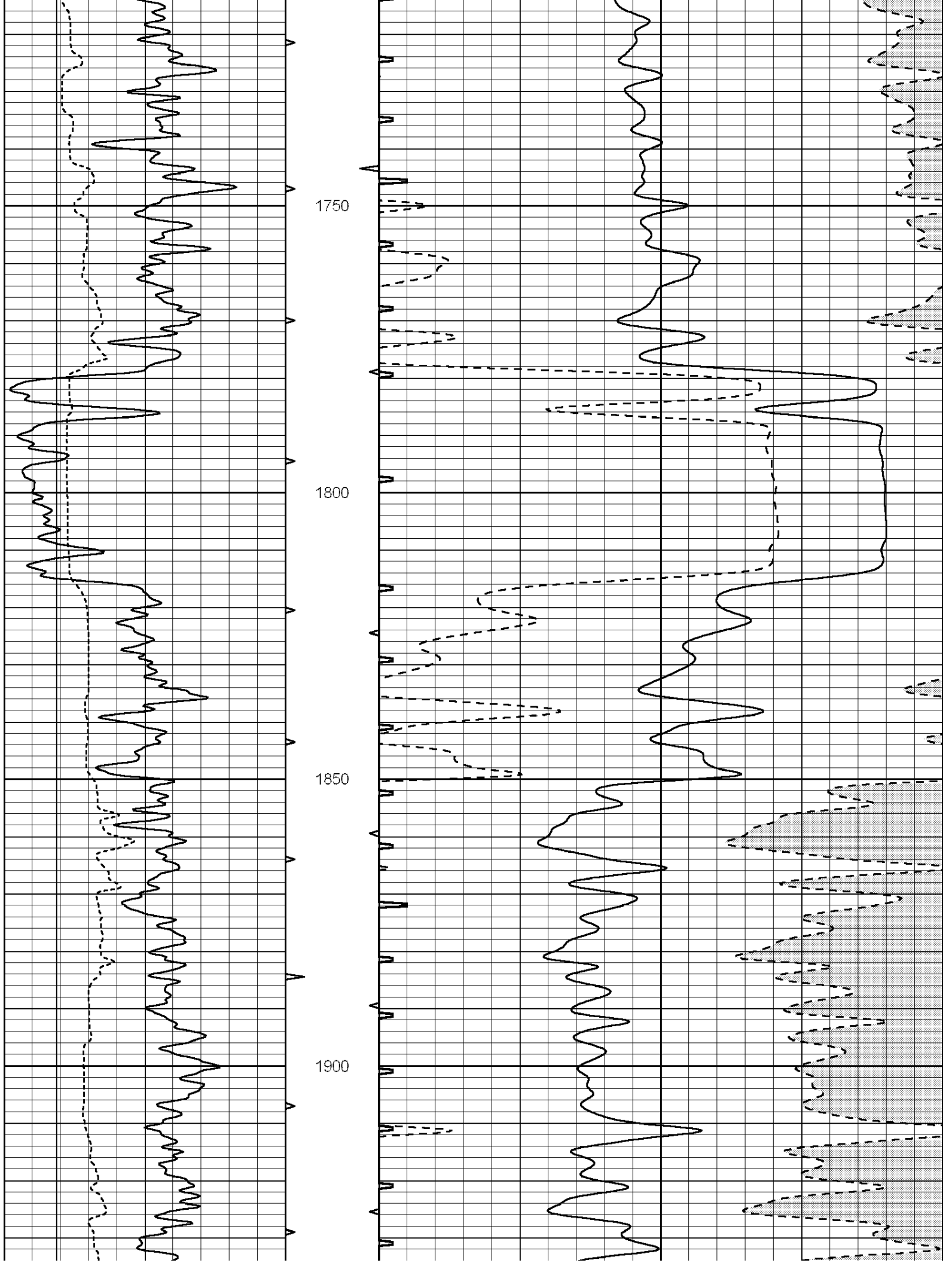


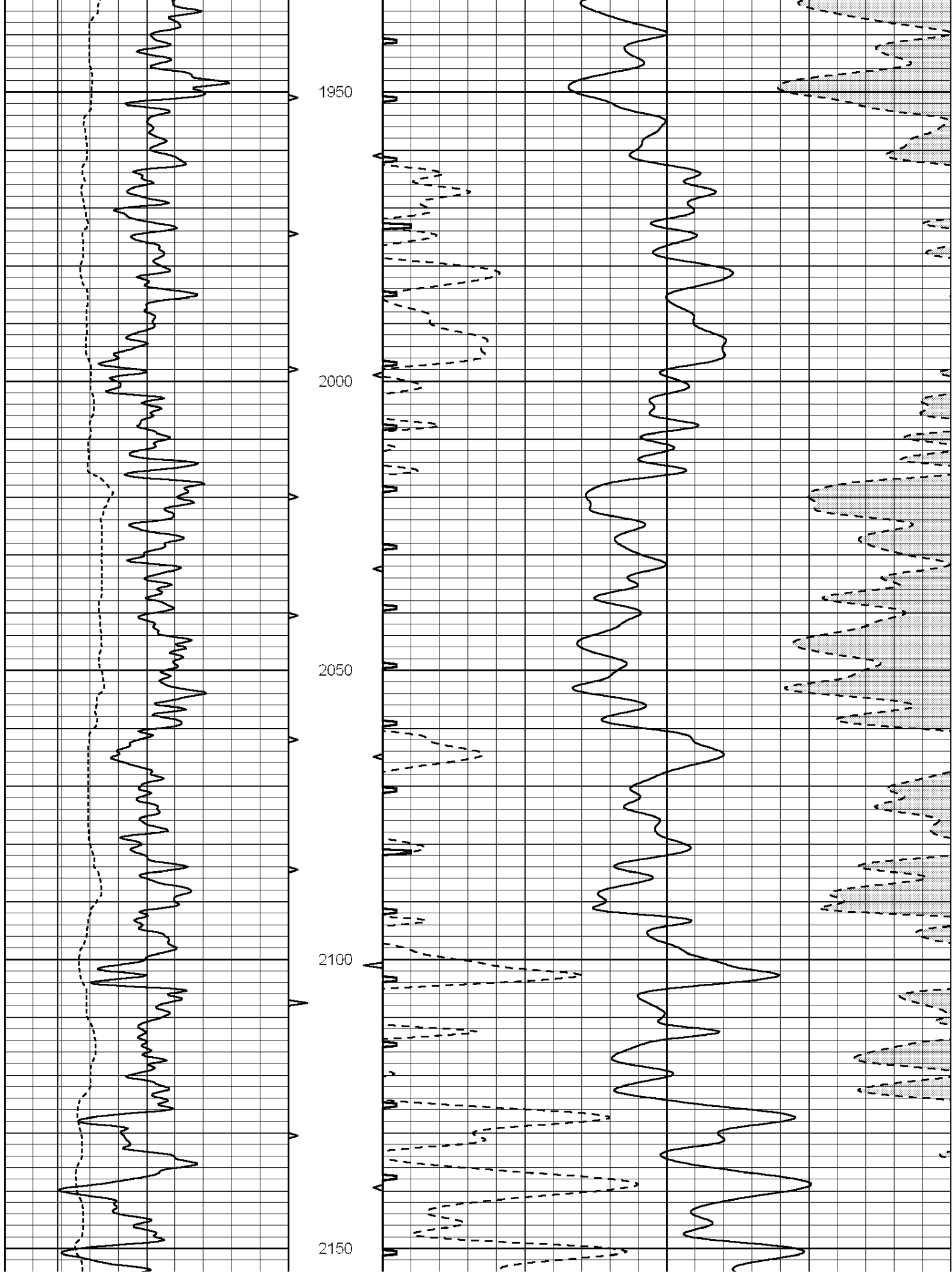


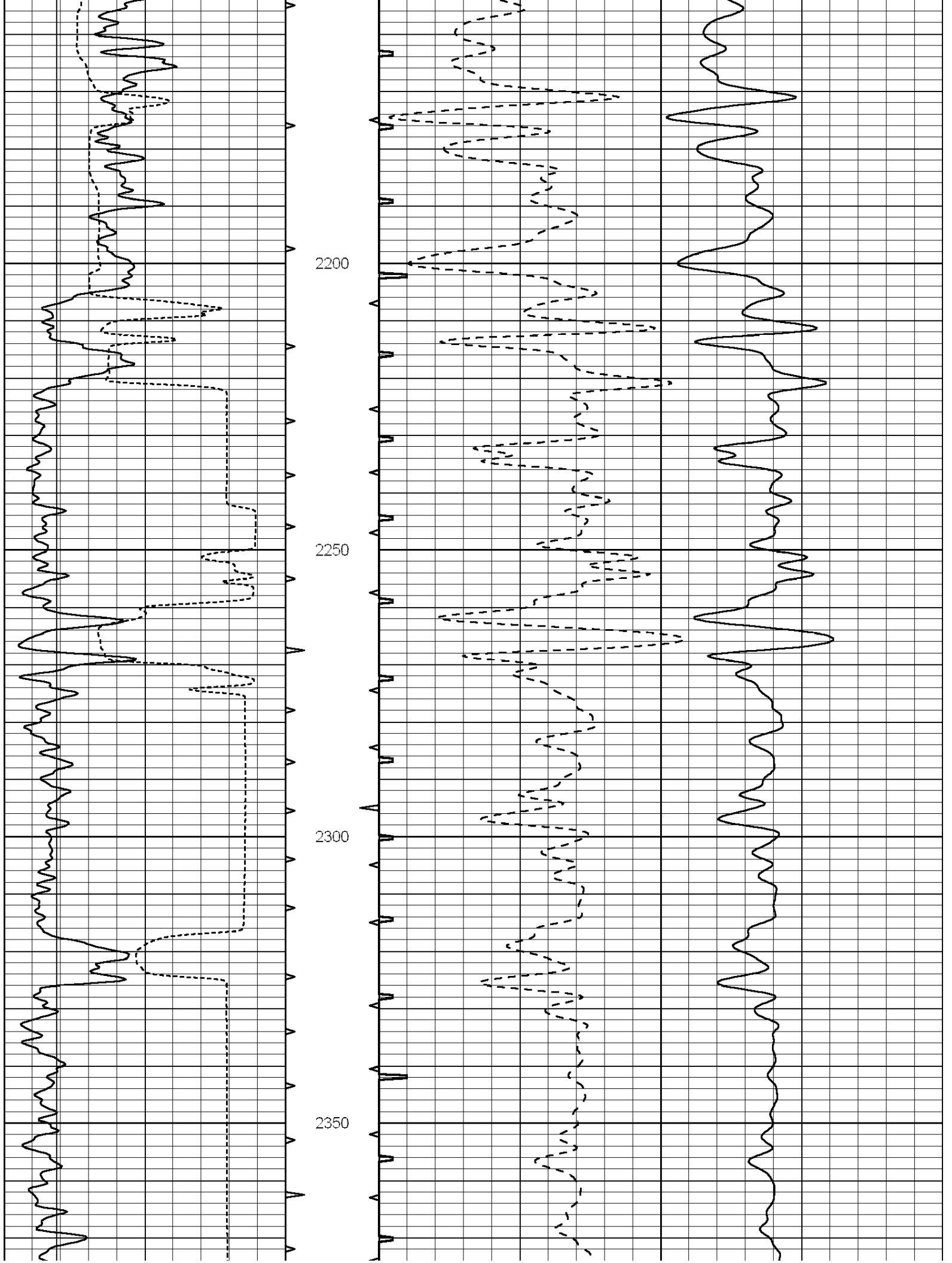


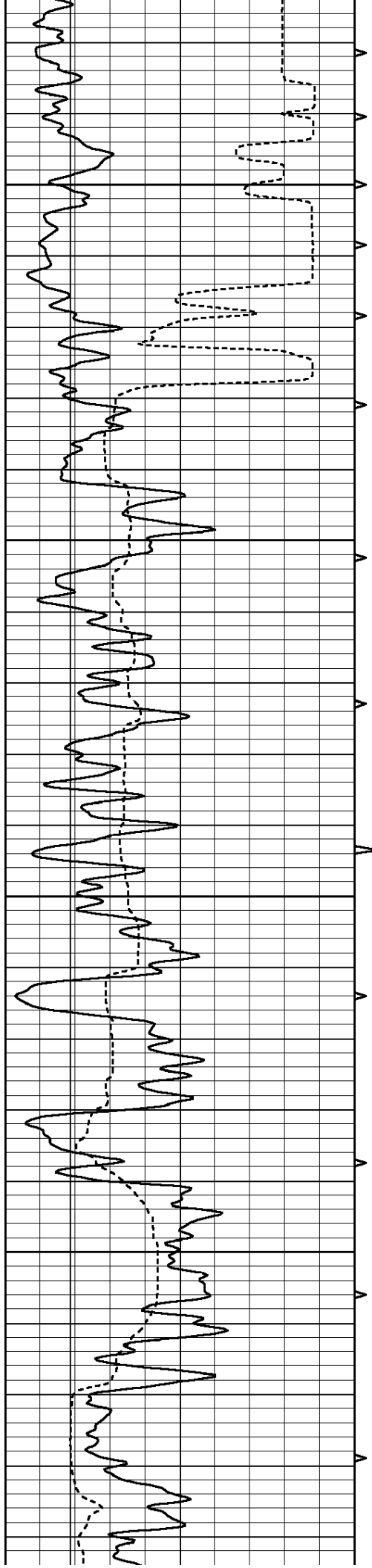










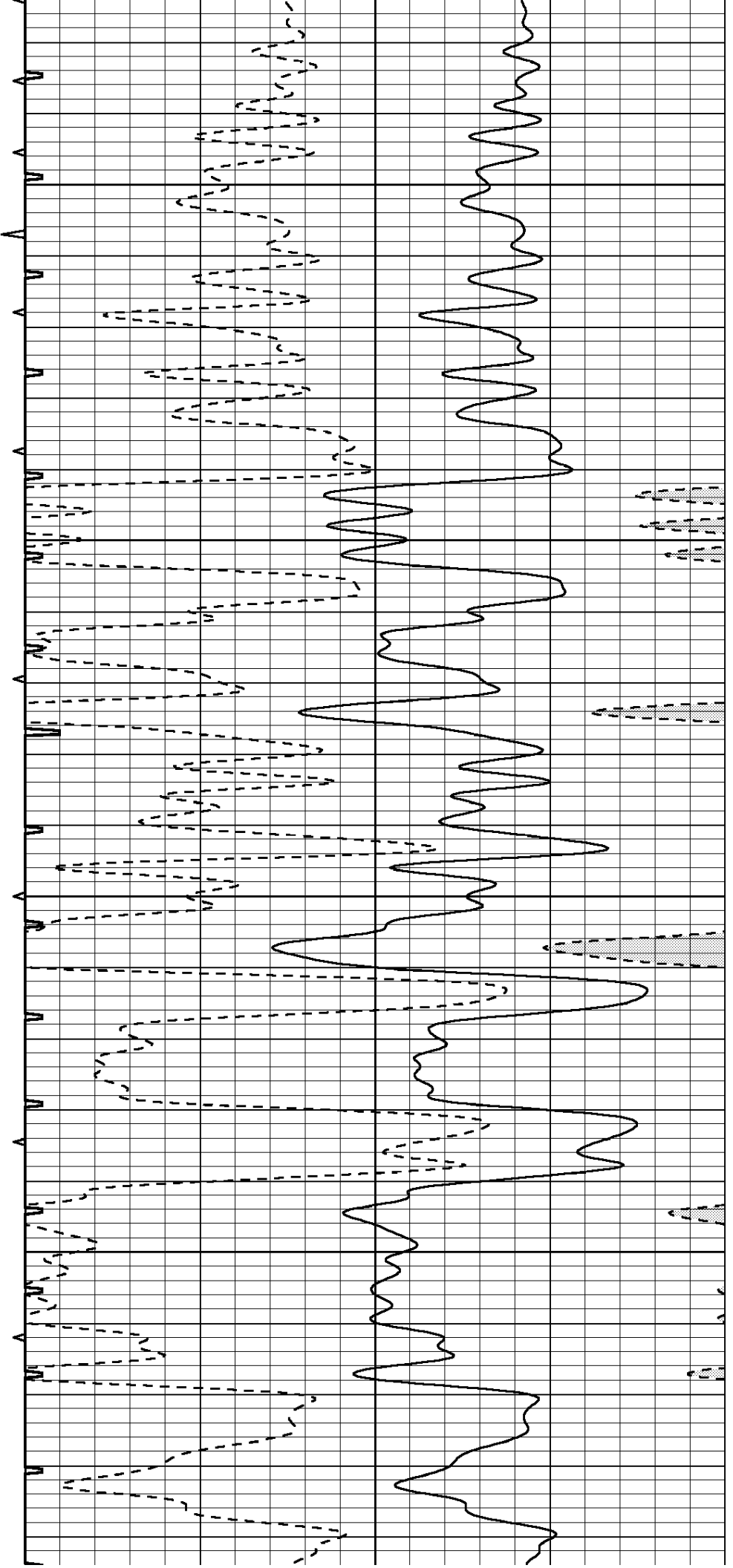


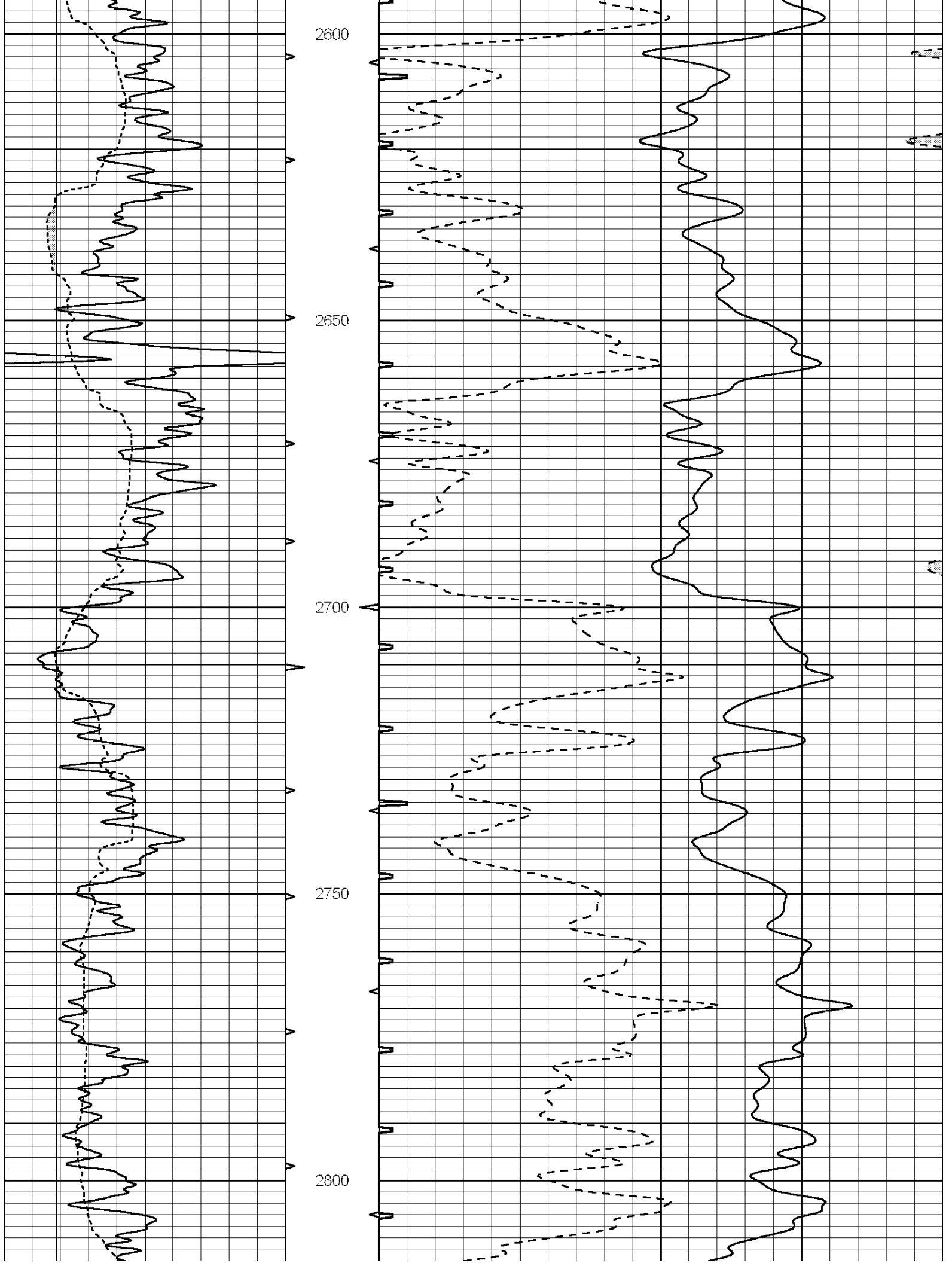
2400

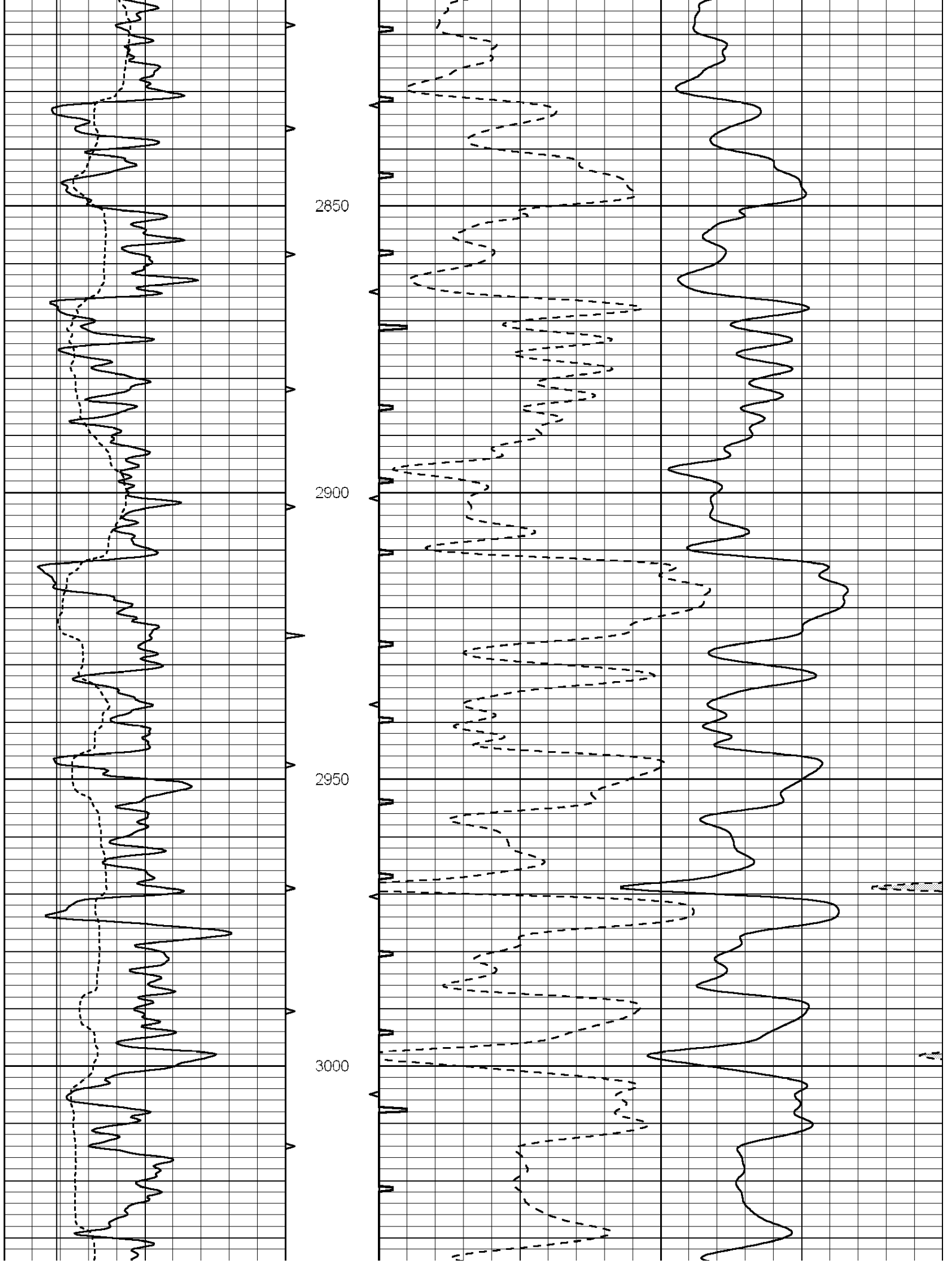
2450

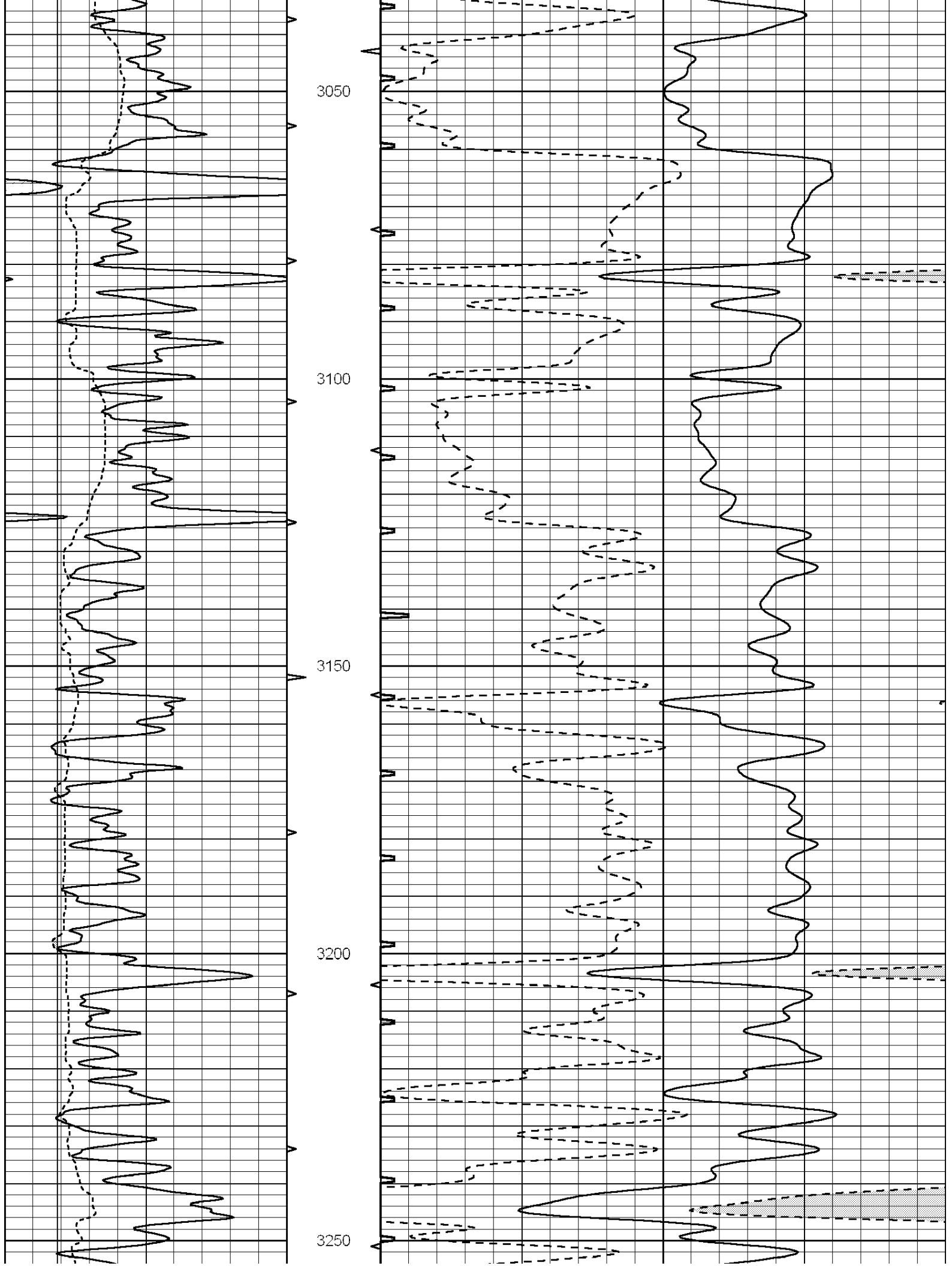
2500

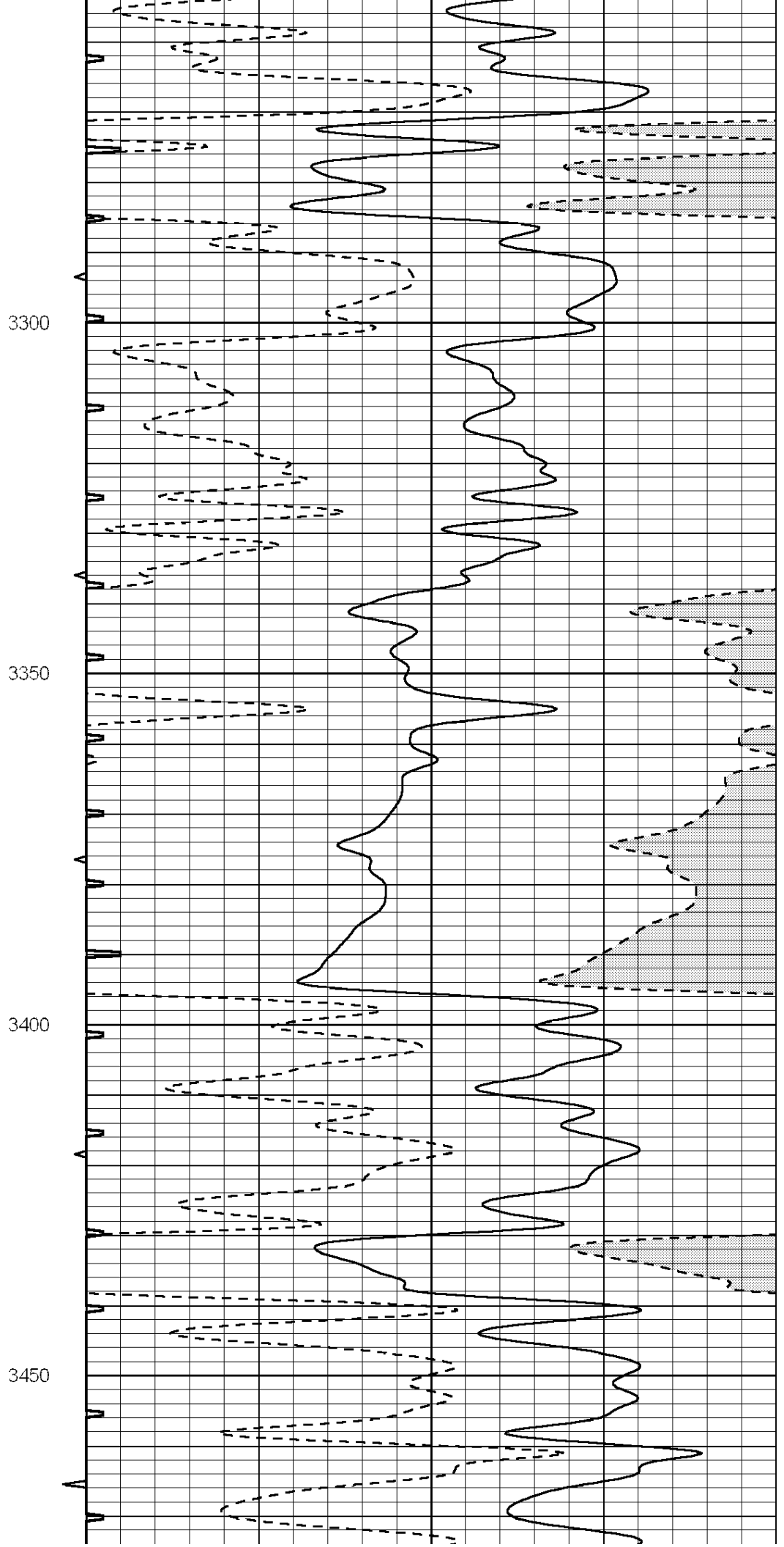
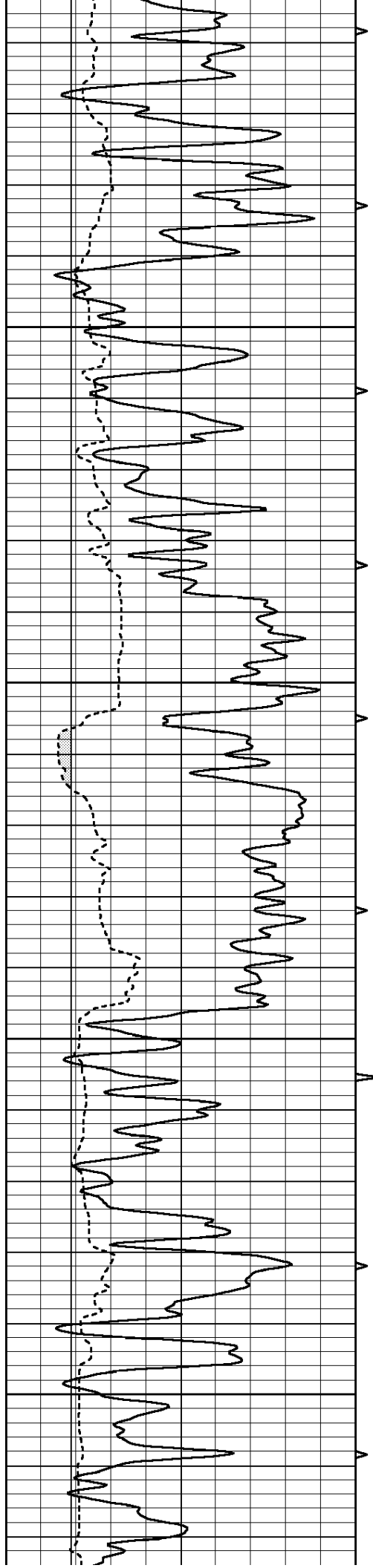
2550

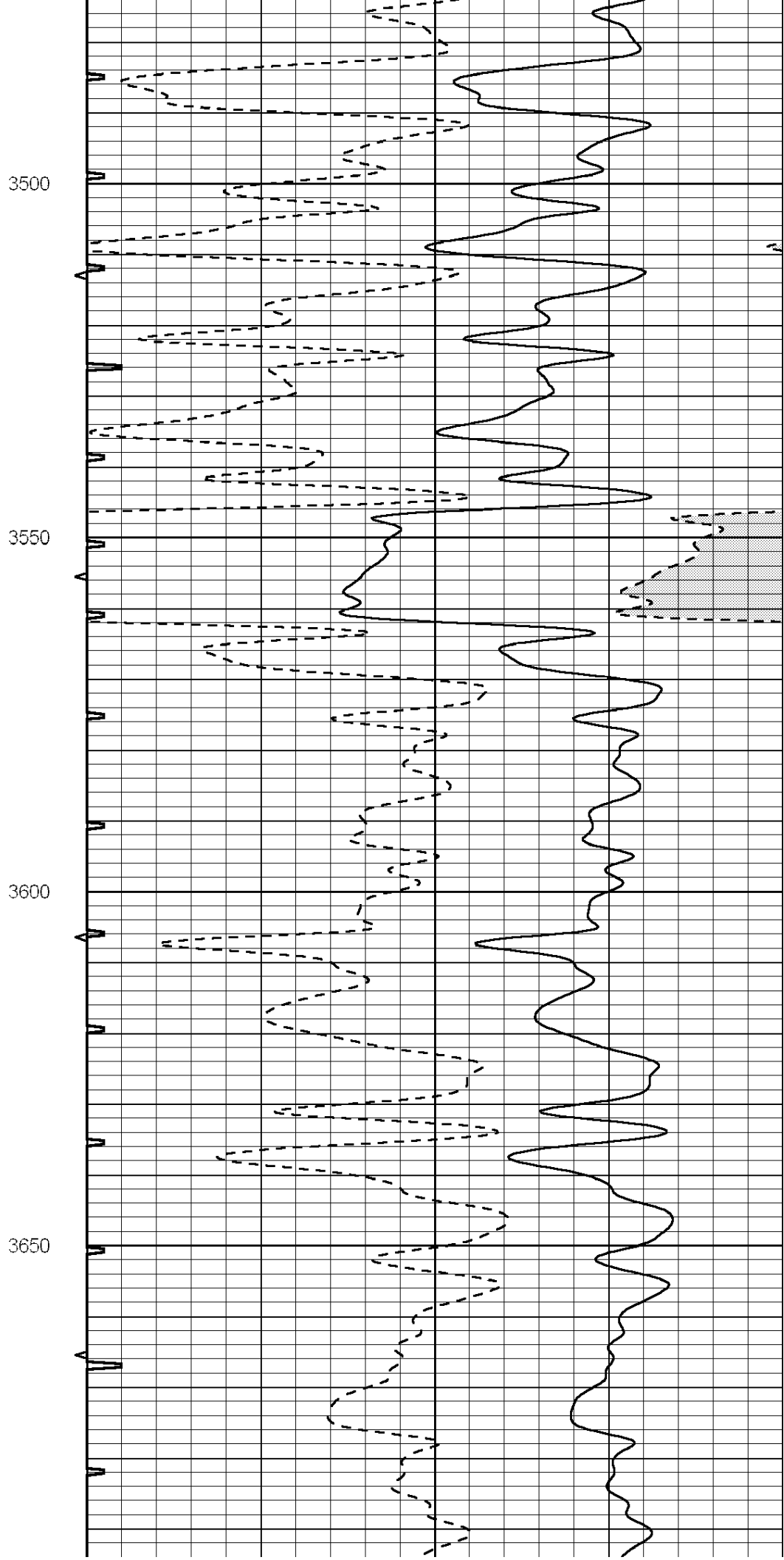
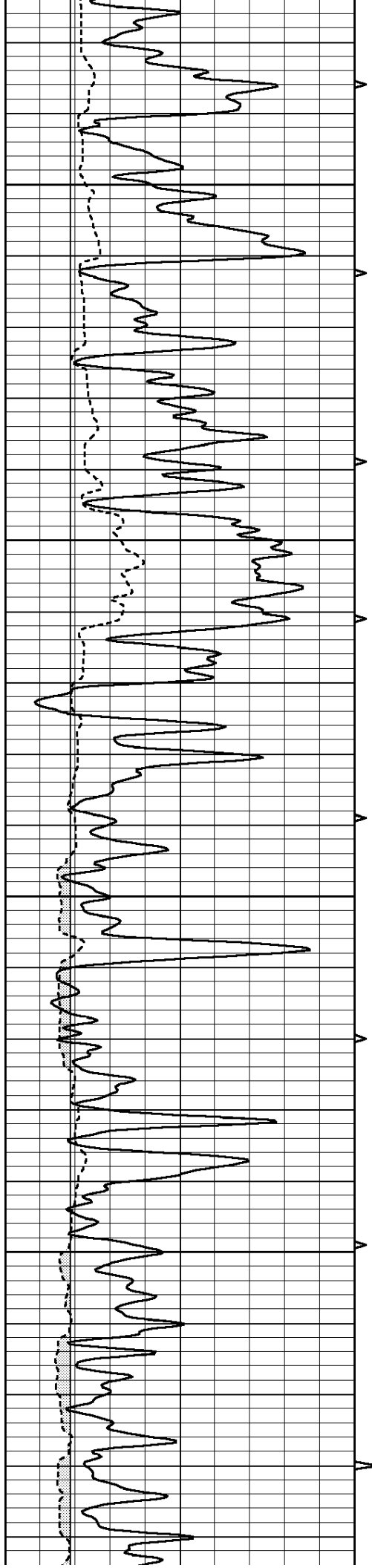


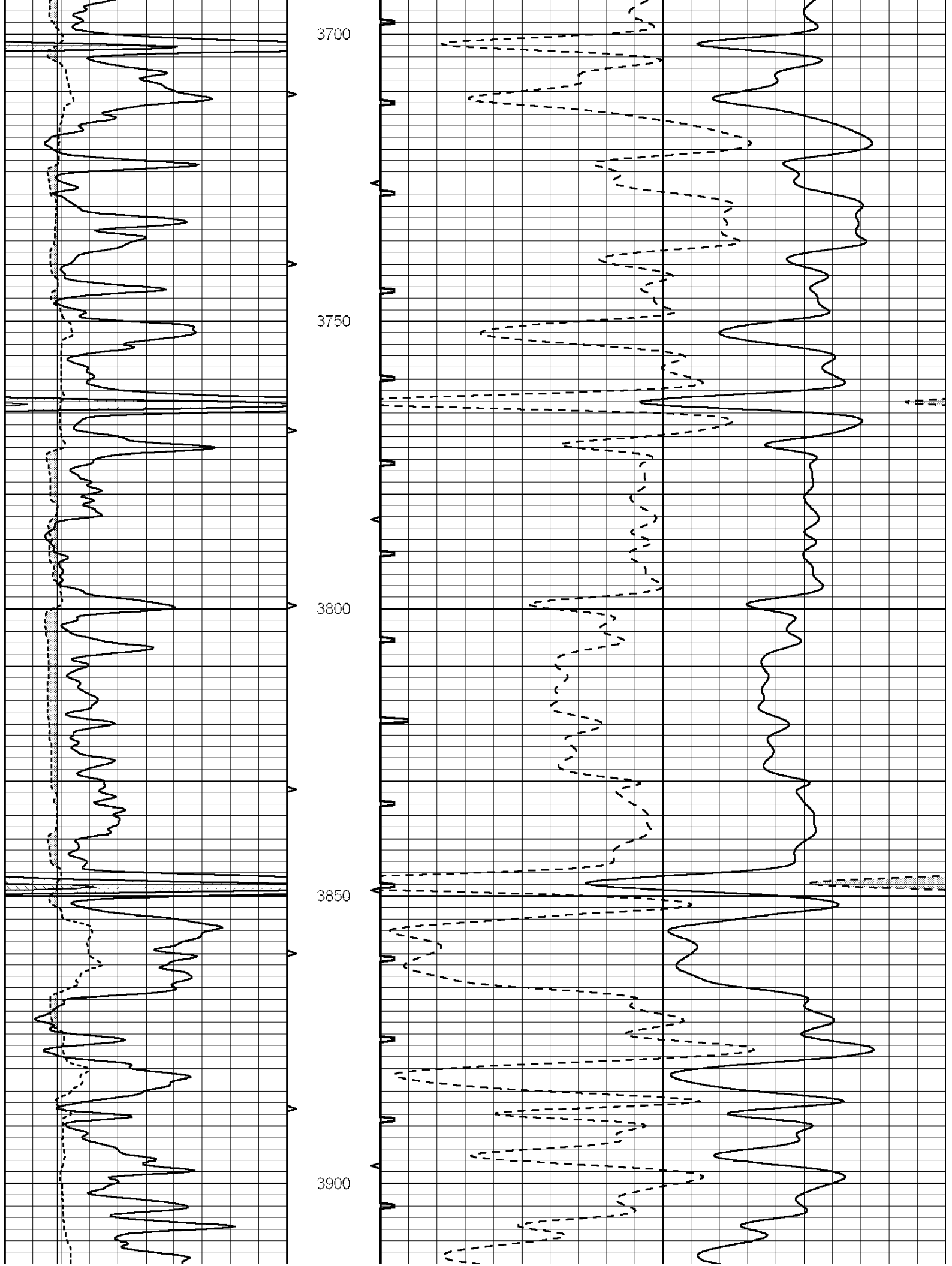


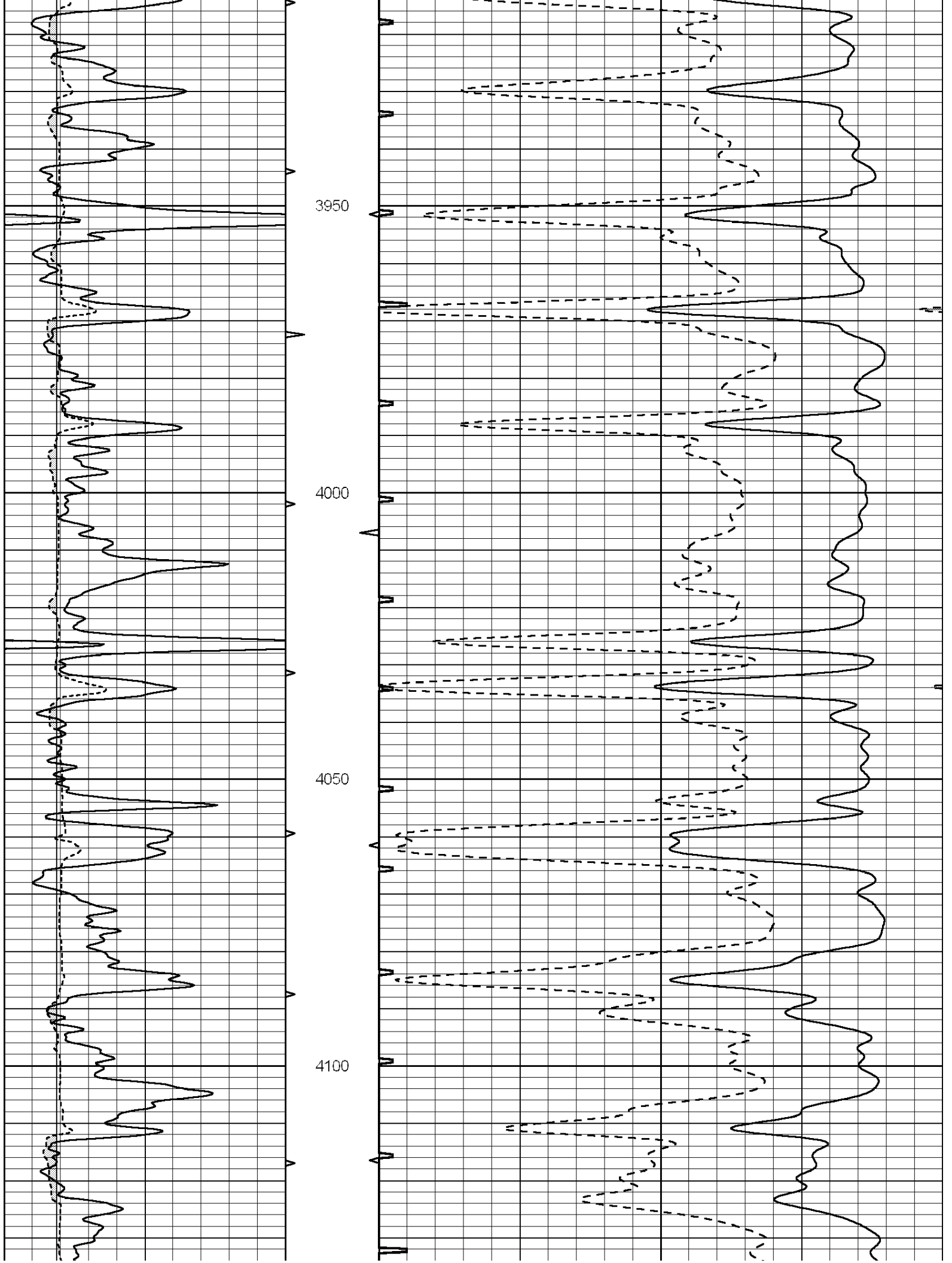


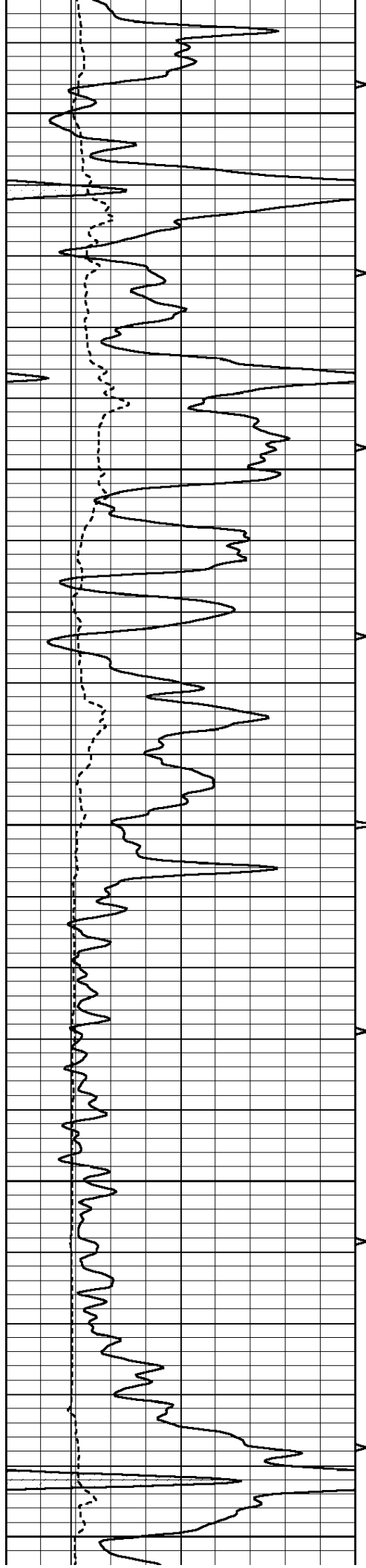












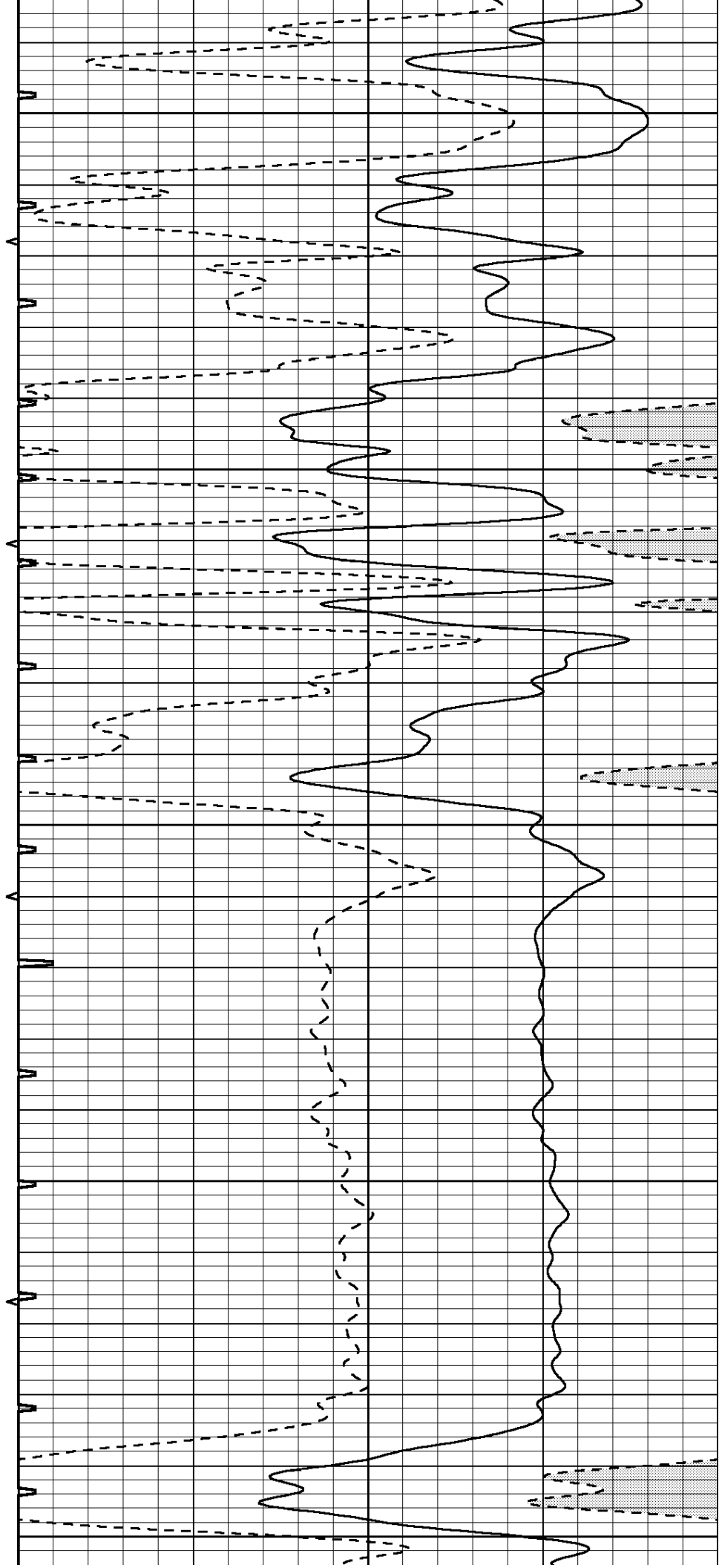
4150

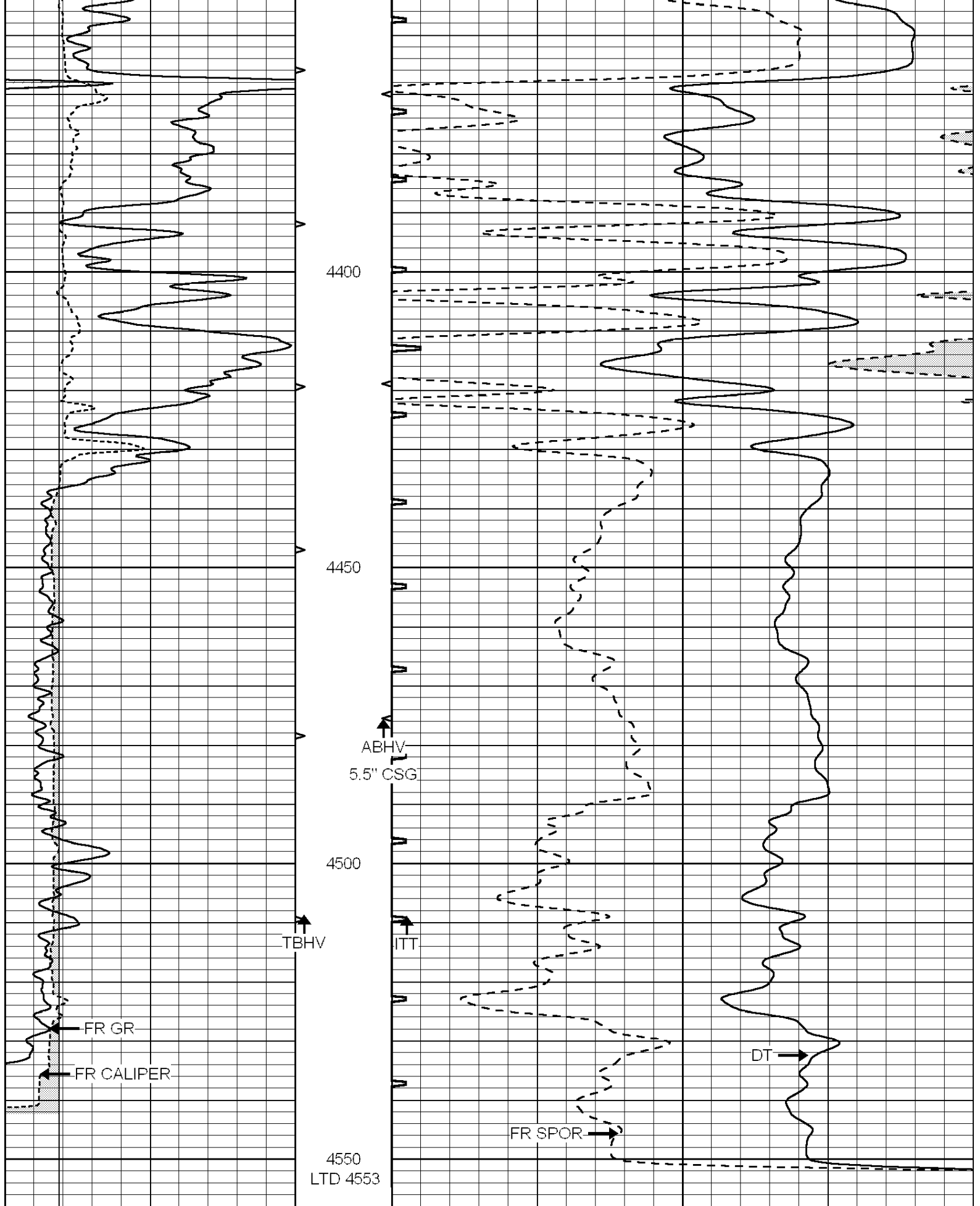
4200

4250

4300

4350





0	GAMMA RAY (GAPI)	150	ABHV	140	DELTA TIME (usec/ft)	40	
6	CALIPER (in)	16	10 (ft3)	0	30	SONIC POROSITY (pu)	-10
			TBHV	0	ITT (msec)	20	



SUPERIOR
Hays,
Kansas

REPEAT SECTION

Database File: 006700pe.db
 Dataset Pathname: pass5.1
 Presentation Format: _slt
 Dataset Creation: Mon Feb 28 11:17:36 2011 by Calc Open-Cased 090629
 Charted by: Depth in Feet scaled 1:240

0	GAMMA RAY (GAPI)	150	ABHV	140	DELTA TIME (usec/ft)	40
6	CALIPER (in)	16	10 (ft3)	0 30	SONIC POROSITY (pu)	-10
-----			TBHV	0	ITT (msec)	20
			0 (ft3)	10		

