



Sonic Cement
Bond Log

Ph. (785) 625-3858

15-109-20992-00-00

Company Shakespeare Oil Company

Well Glassman #5-35

Field

County Logan

State Kansas

Location

335' FNL & 1990' FEL

Other Services

Perforate

Sec: 35 Twp: 12S Rge: 32W

Permanent Datum Ground Level Elevation 2984
 Log Measured From Kelly Bushing 10 Ft. Above Perm. Datum
 Drilling Measured From Kelly Bushing

Elevation
 K.B. 2994
 D.F. 2992
 G.L. 2984

| | | |
|---------------------------|--------------|--------|
| Run Number | One | |
| Date Survey | 4/12/2011 | |
| Date Cementing | 4/5/2011 | |
| Type Cementing Operation | Primary | |
| Depth Driller | 4700 | |
| Depth Logger | 4646 | |
| Logged Interval | 4644 to 2900 | to |
| Casing Driller | 5.5 @ TD | @ |
| Float Collar -- D.V. Tool | //// | 2453 @ |
| Squeeze Depth | //// | |
| Amount & Type Cement | //// | |
| Amount & Type Admix | //// | |
| Type Fluid In Hole | Water | |
| Fluid Level | 150 | |
| Salinity PPM CL | //// | |
| Weight lb/gal -- Vis. | //// | //// |
| Approx. Logged Cement Top | 3084 | |
| Calculated Cement Top | //// | |
| Max. Hole Temperature | //// | |
| Tool No. | PDBT71 | |
| Spacing Recorded | 3-5 | |
| Equipment -- Location | 50 Hays | |
| Recorded By | D. Schmidt | |
| Witnessed By | Tom Larson | |

<<< Fold Here >>>

All interpretations are opinions based on inferences from electrical or other measurements and we cannot and do not guarantee the accuracy or correctness of any interpretation, and we shall not, except in the case of gross or willful negligence on our part, be liable or responsible for any loss, costs, damages, or expenses incurred or sustained by anyone resulting from any interpretation made by any of our officers, agents or employees. These interpretations are also subject to our general terms and conditions set out in our current Price Schedule.

Comments

Thank you for using Log-Tech
(785) 625-3858

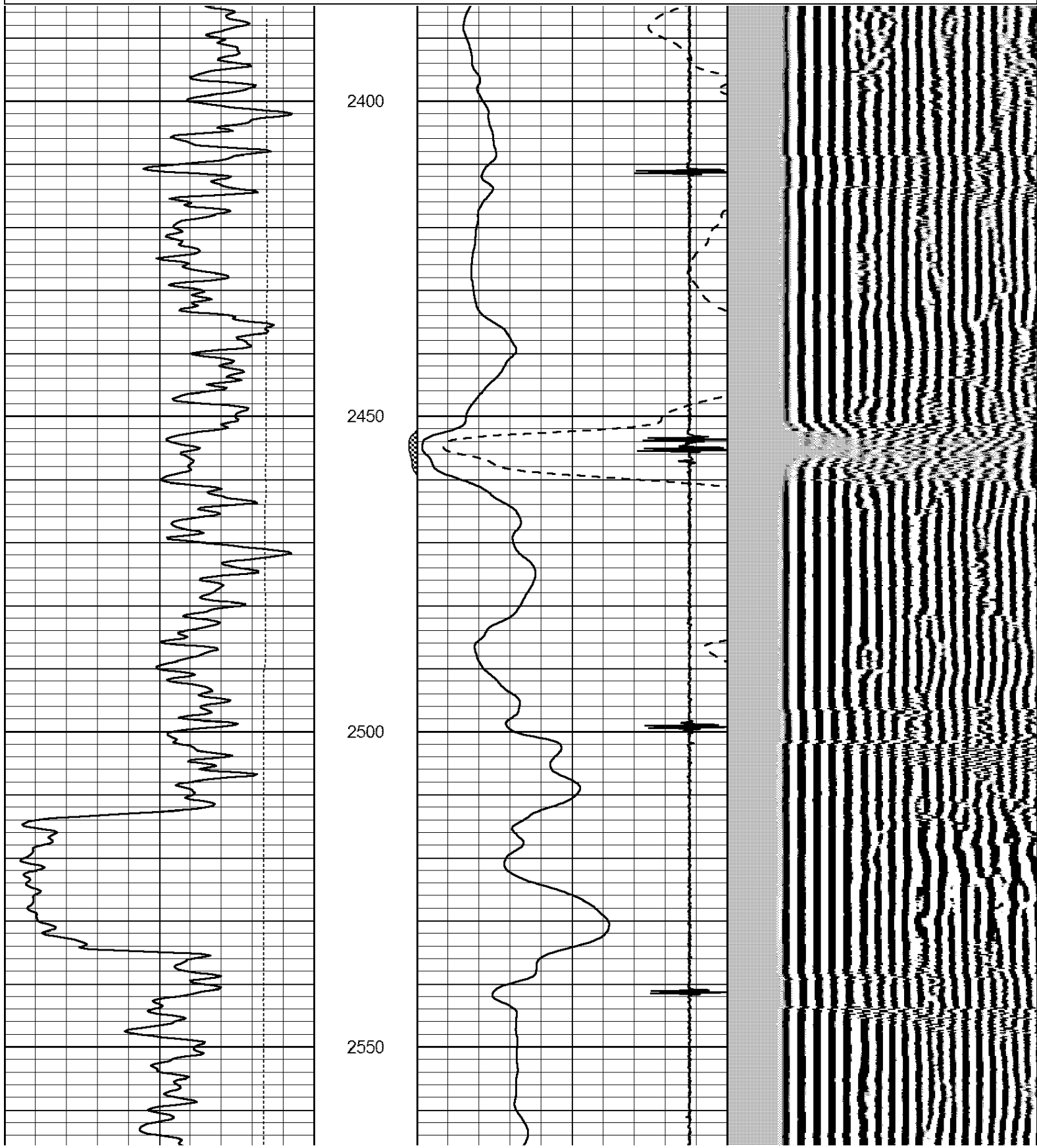
Oakley,
S on Hwy 83 to Topeka Rd,
1/2 E, S into

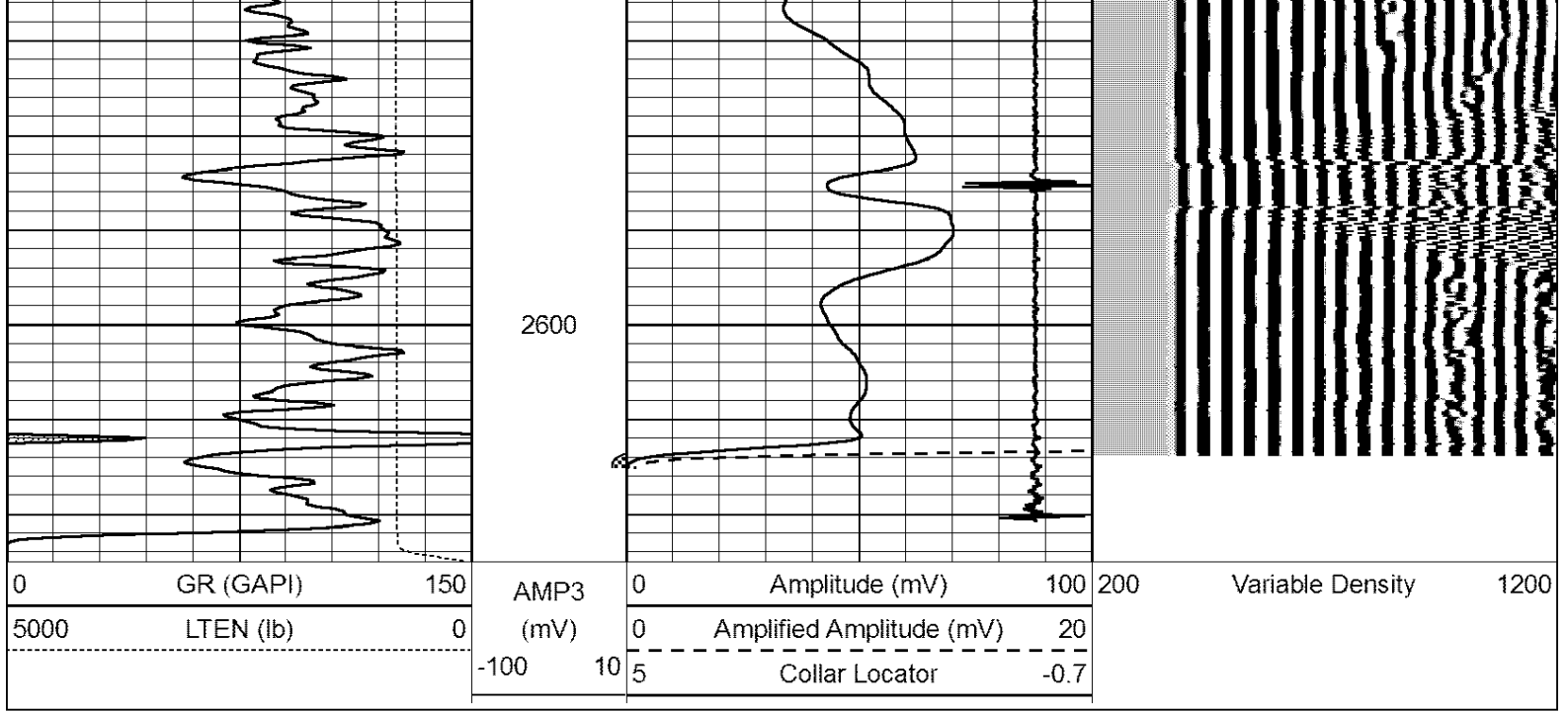


Port Collar @ 2453

Database File: shakespear.db
 Dataset Pathname: glassman_/grcbl/pass6
 Presentation Format: cbl dig
 Dataset Creation: Tue Apr 12 09:59:01 2011 by Log SCH 110223
 Charted by: Depth in Feet scaled 1:240

| | | | | | | | | | |
|------|-----------|-----|---------|---|--------------------------|------|-----|------------------|------|
| 0 | GR (GAPI) | 150 | AMP3 | 0 | Amplitude (mV) | 100 | 200 | Variable Density | 1200 |
| 5000 | LTEN (lb) | 0 | (mV) | 0 | Amplified Amplitude (mV) | 20 | | | |
| | | | -100 10 | 5 | Collar Locator | -0.7 | | | |

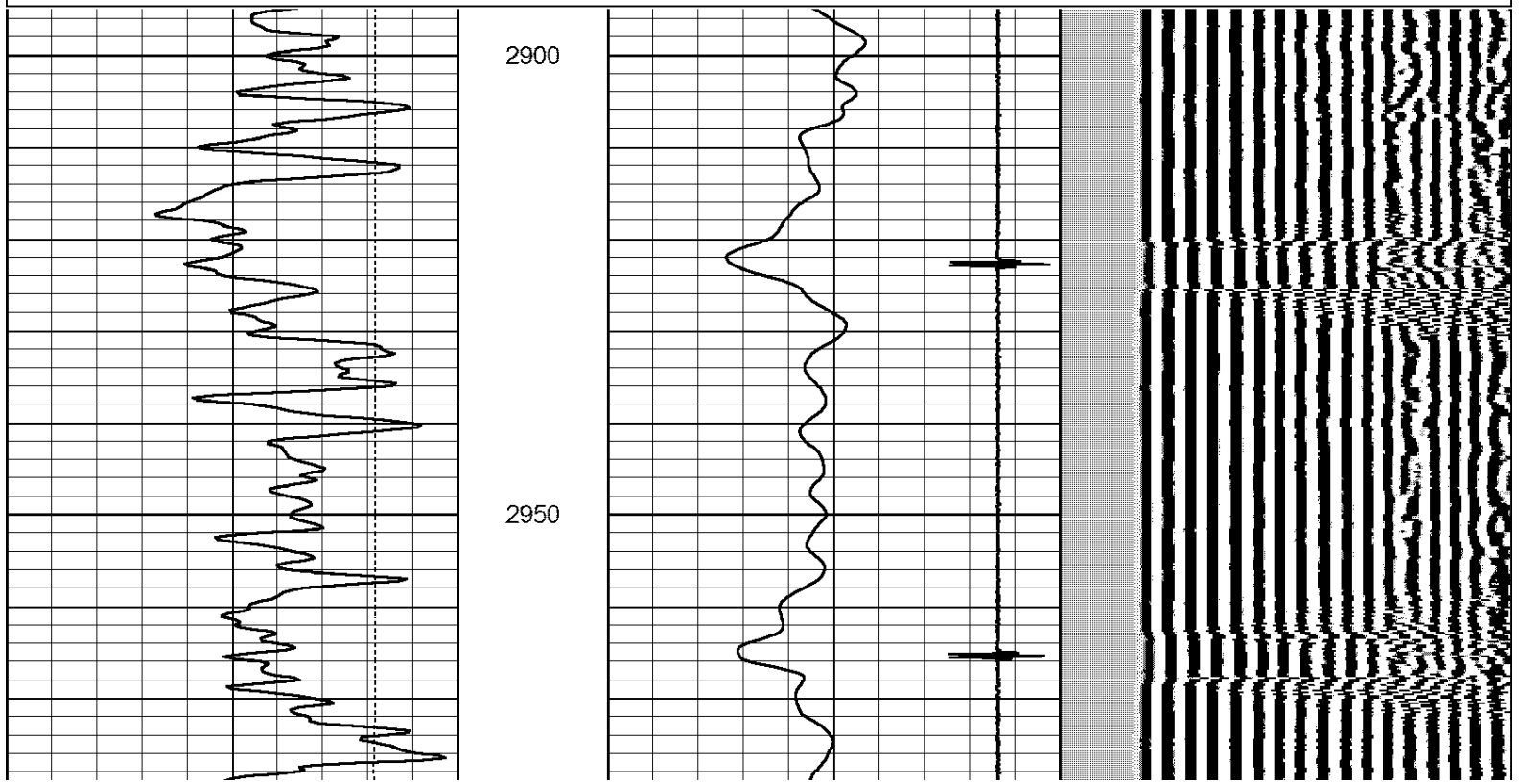
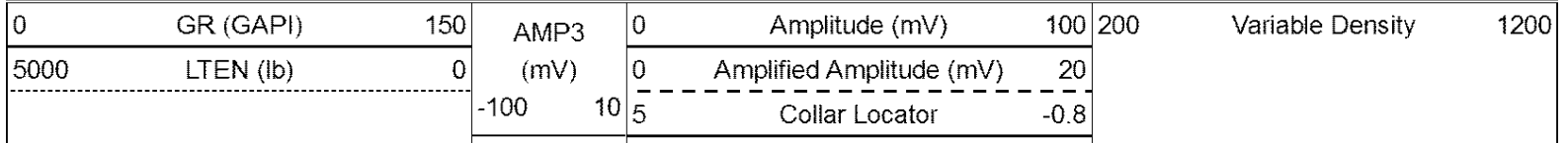


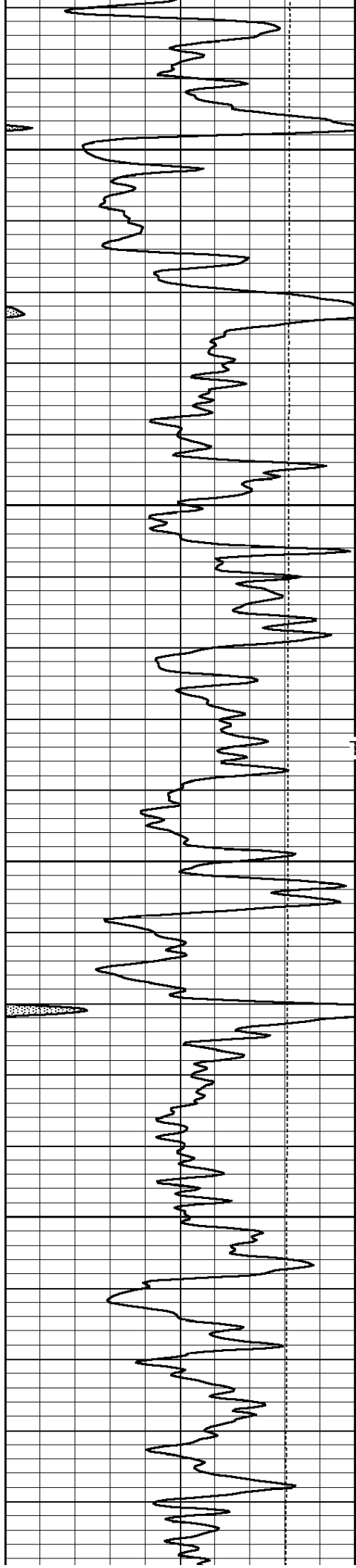


LOG-TECH

Main Pass

Database File: shakespeare.db
 Dataset Pathname: glassman_/grcbl/pass5.1
 Presentation Format: cbl dig
 Dataset Creation: Tue Apr 12 10:28:13 2011
 Charted by: Depth in Feet scaled 1:240





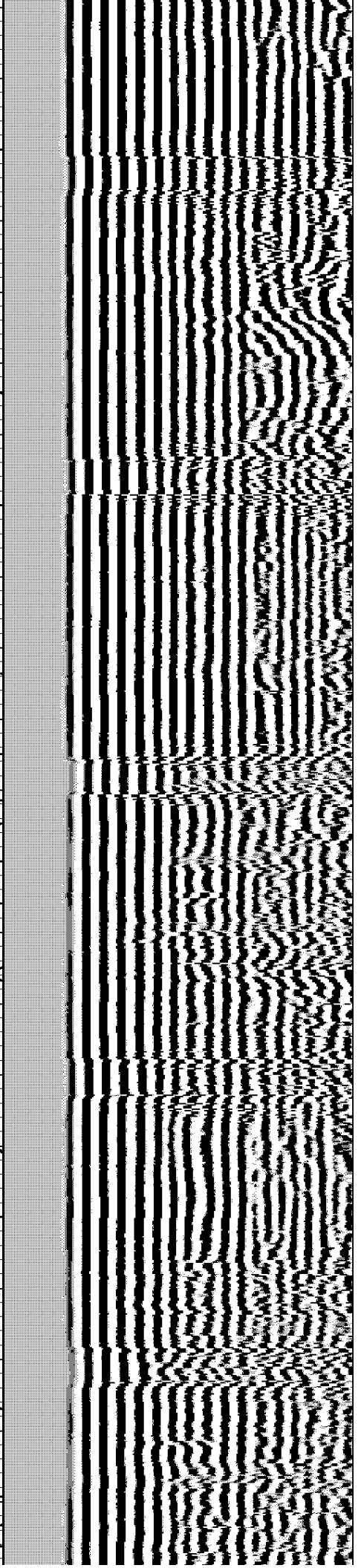
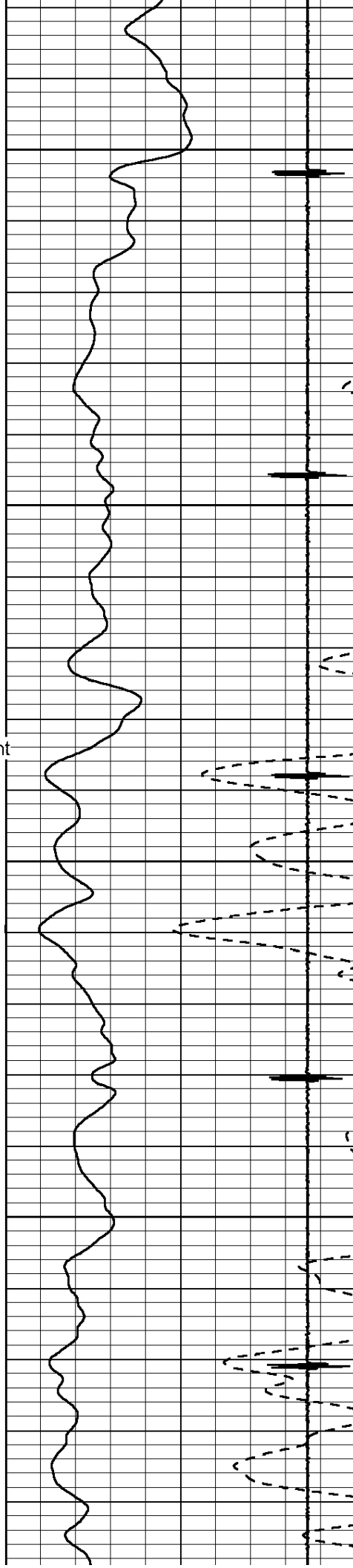
3000

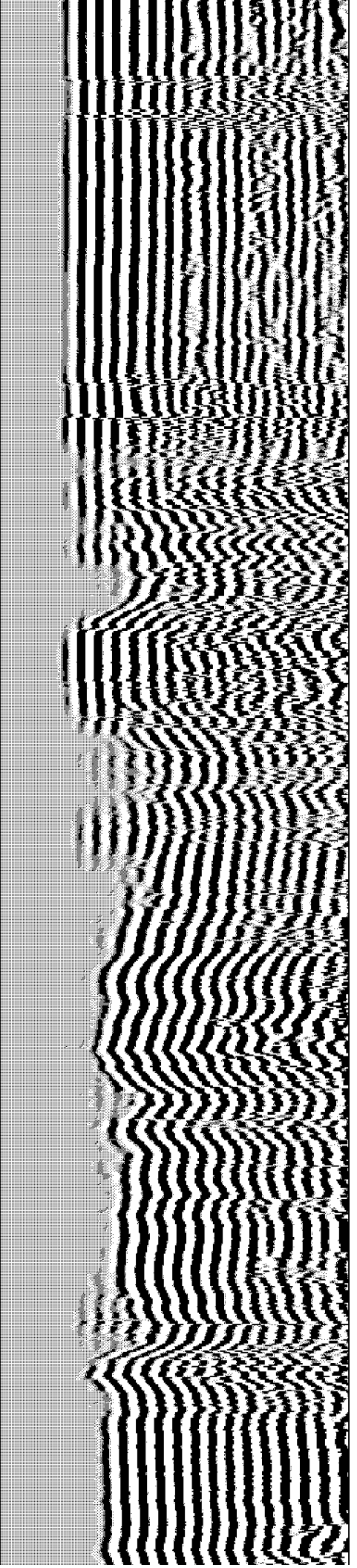
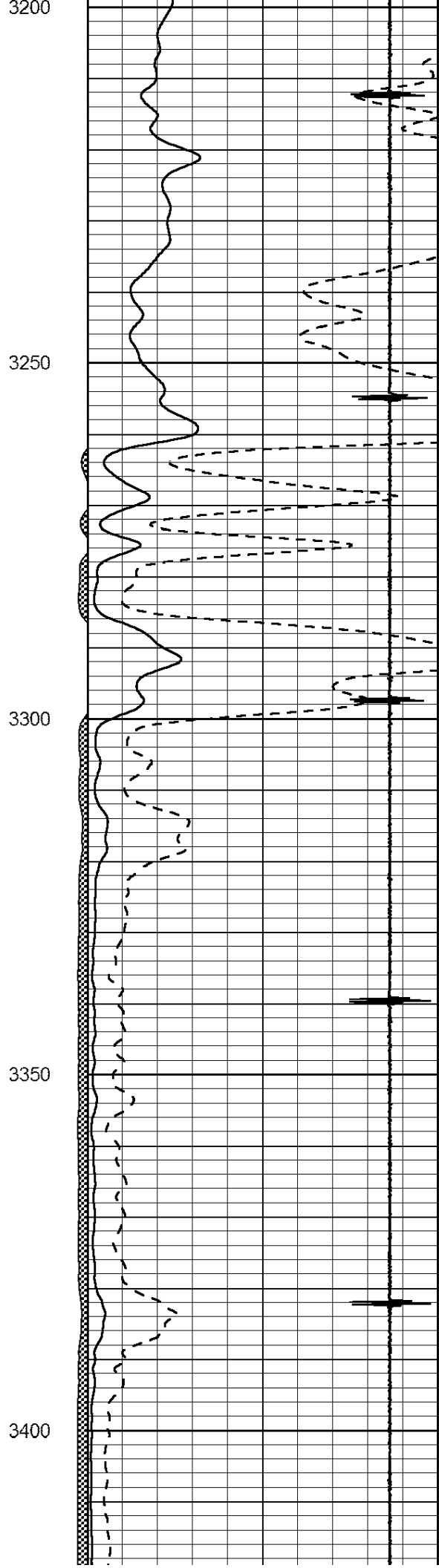
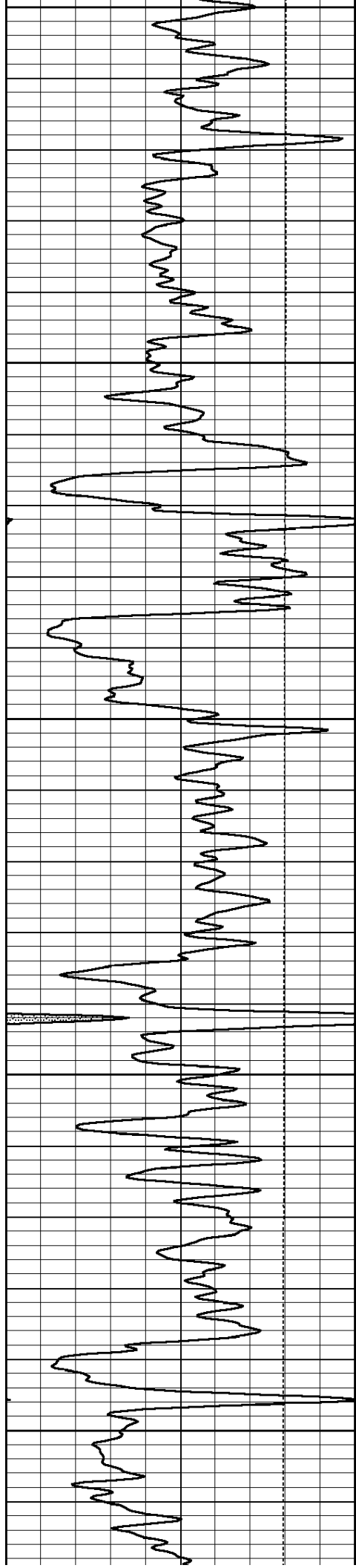
3050

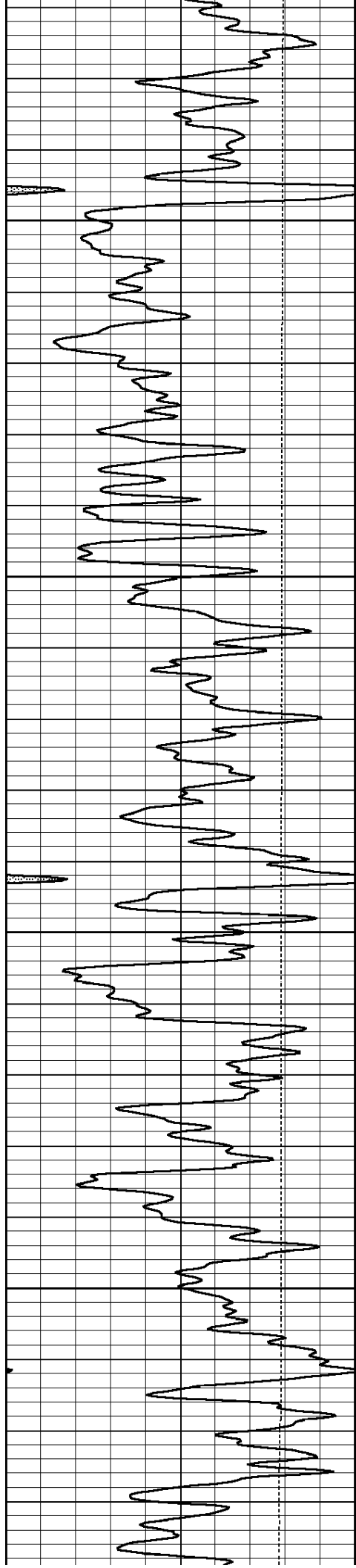
Top of Cement

3100

3150





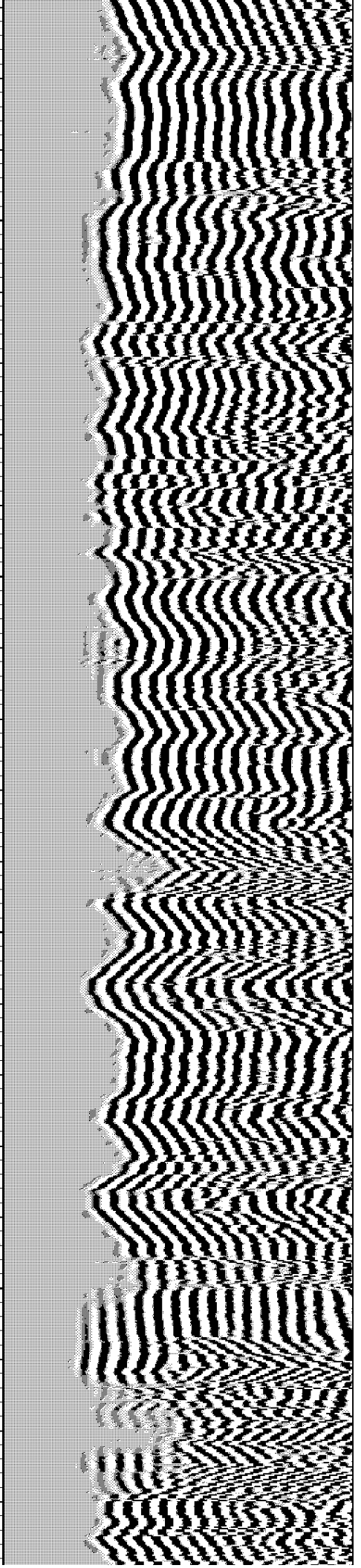
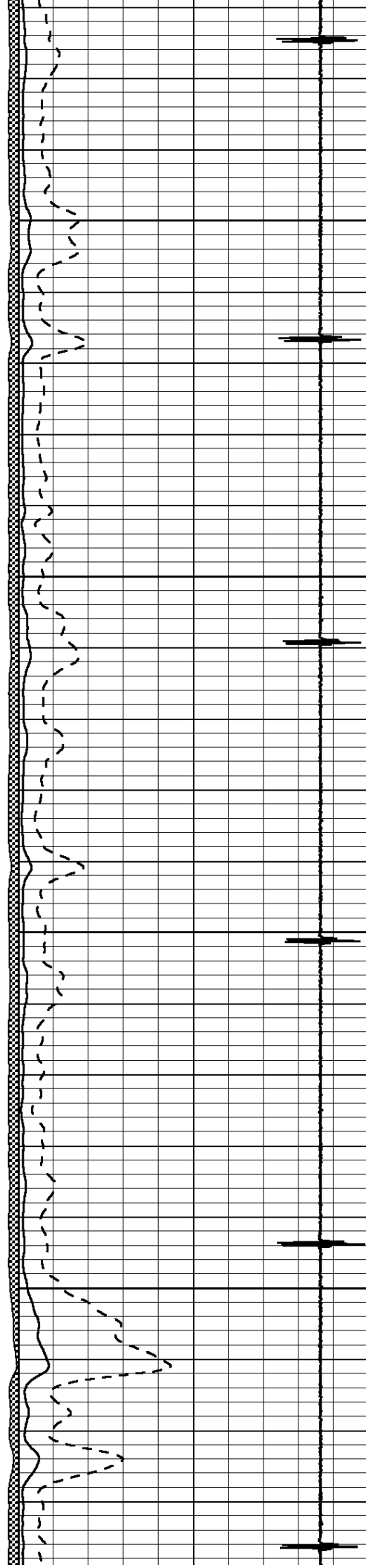


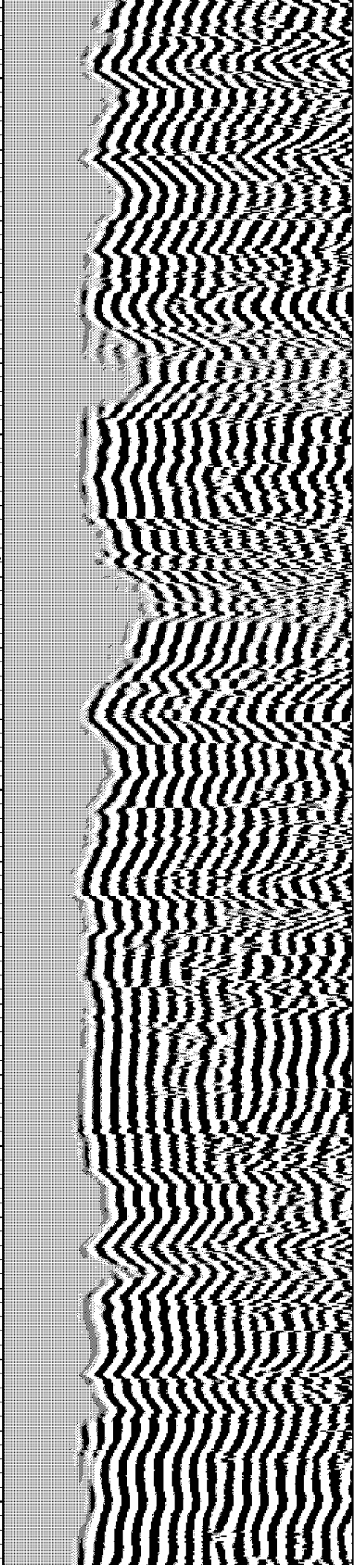
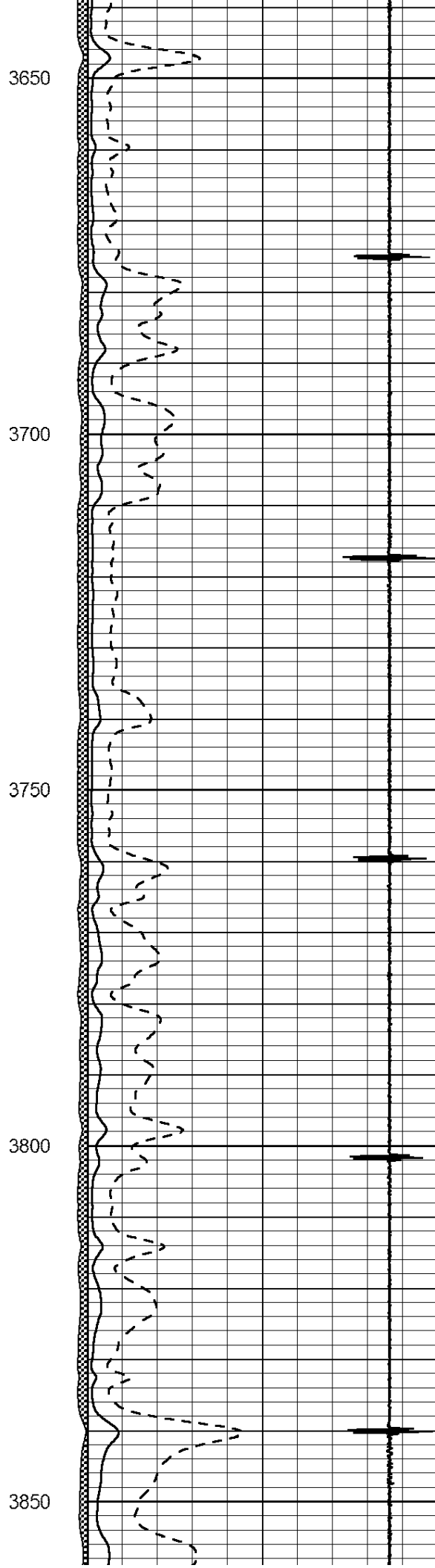
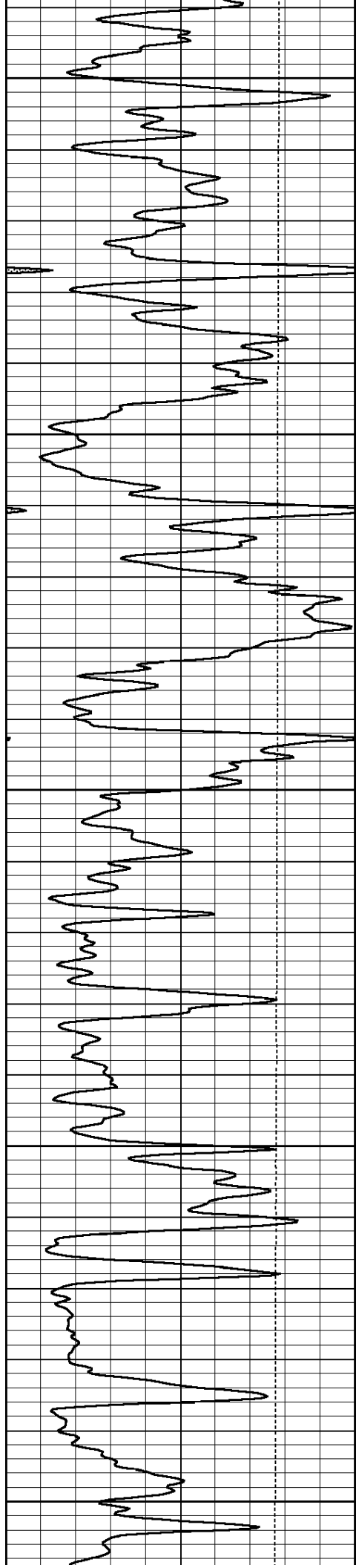
3450

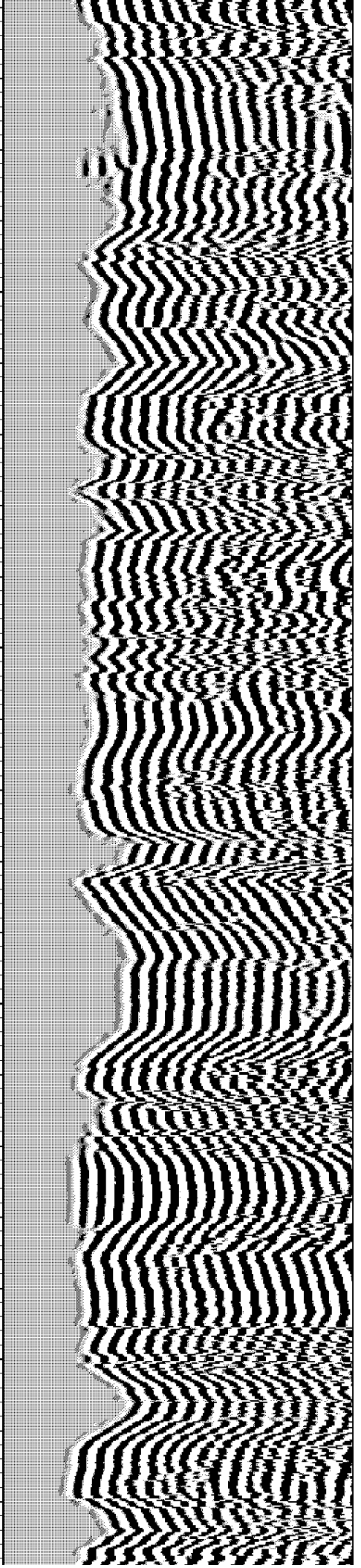
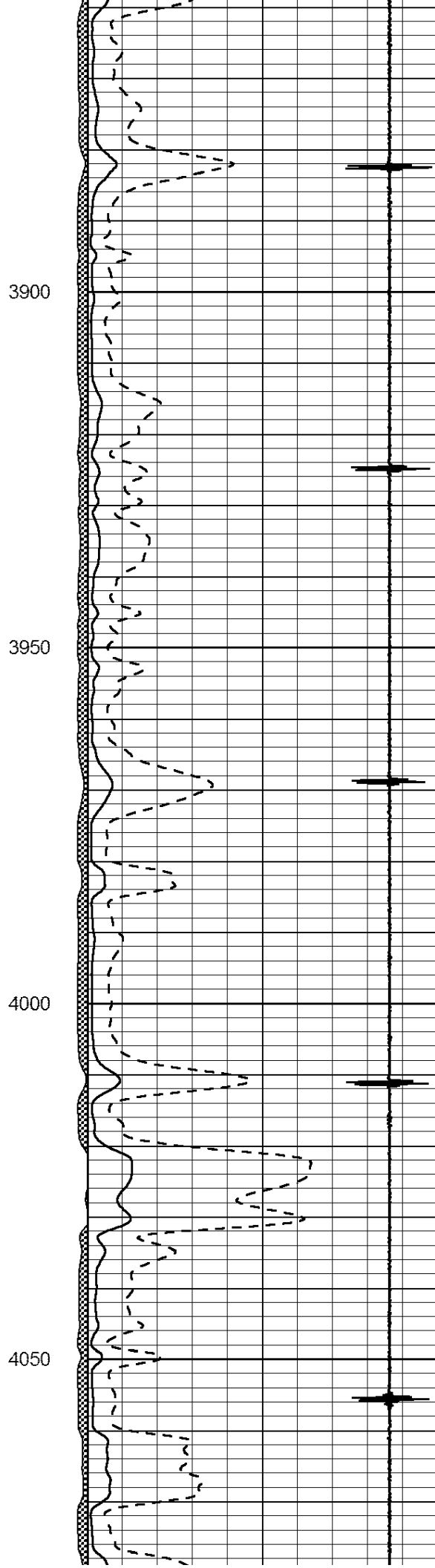
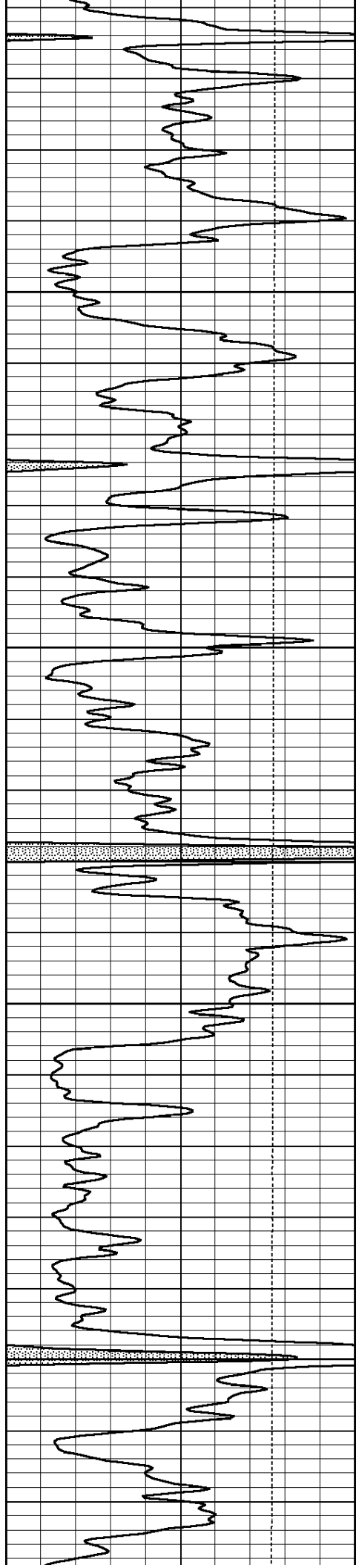
3500

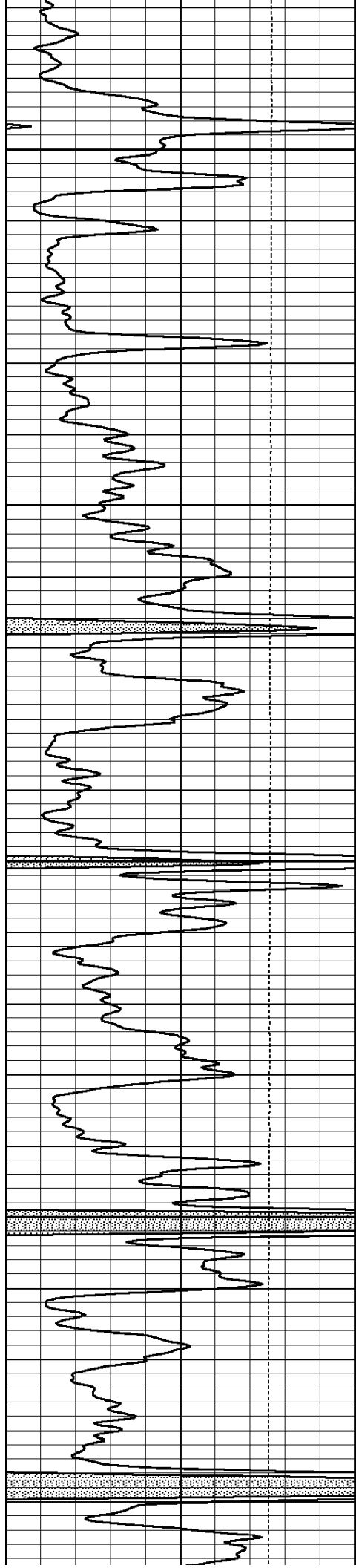
3550

3600







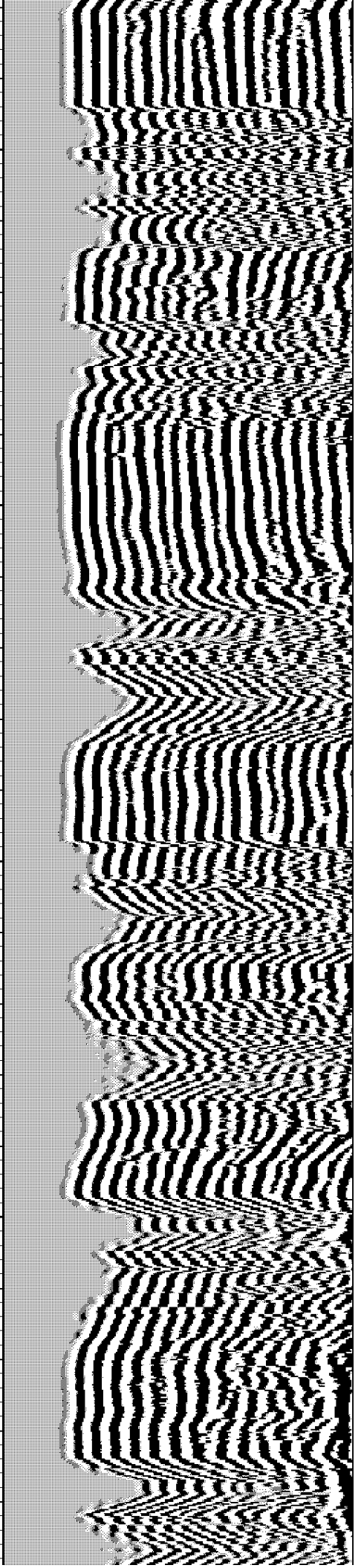
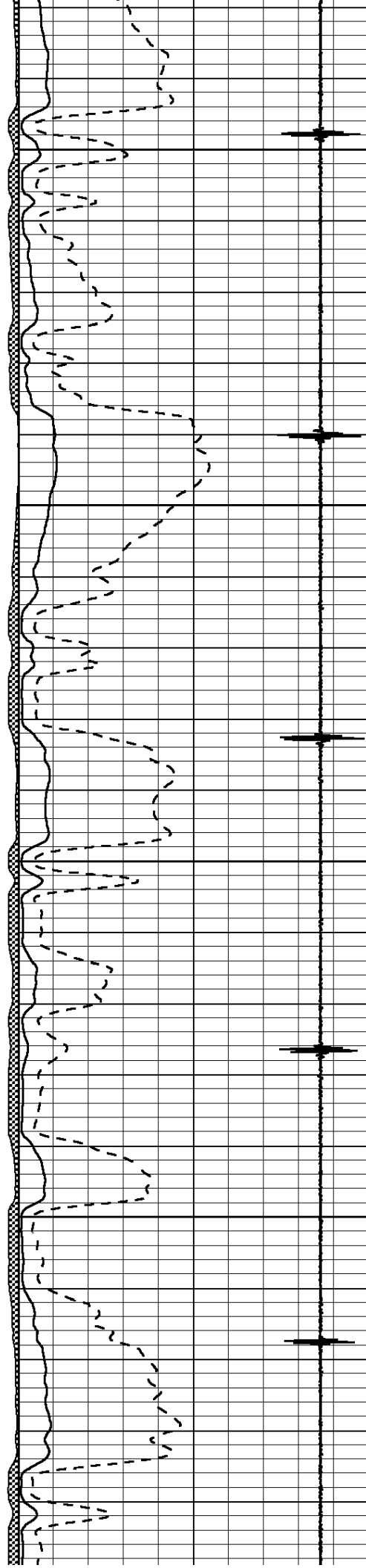


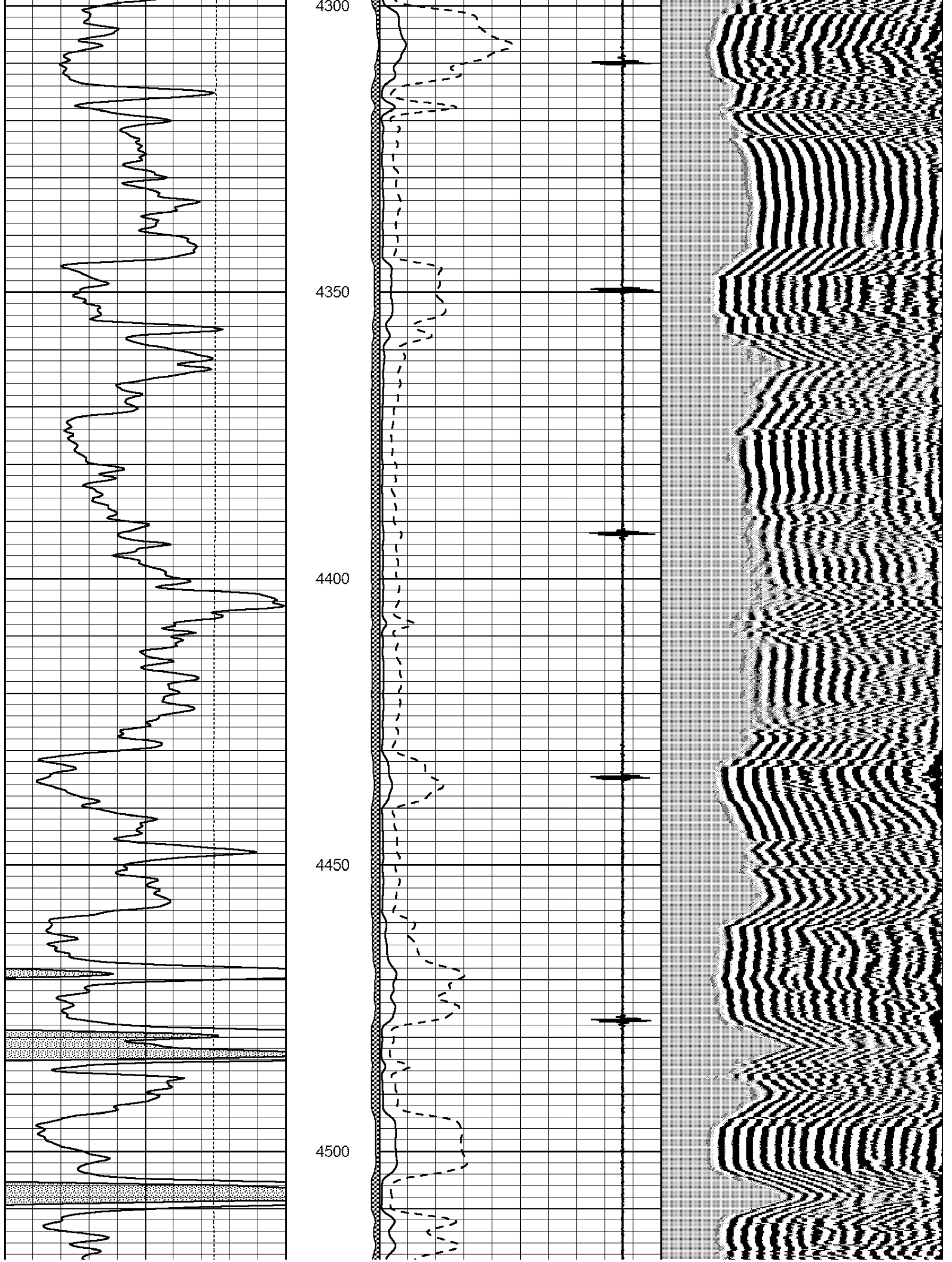
4100

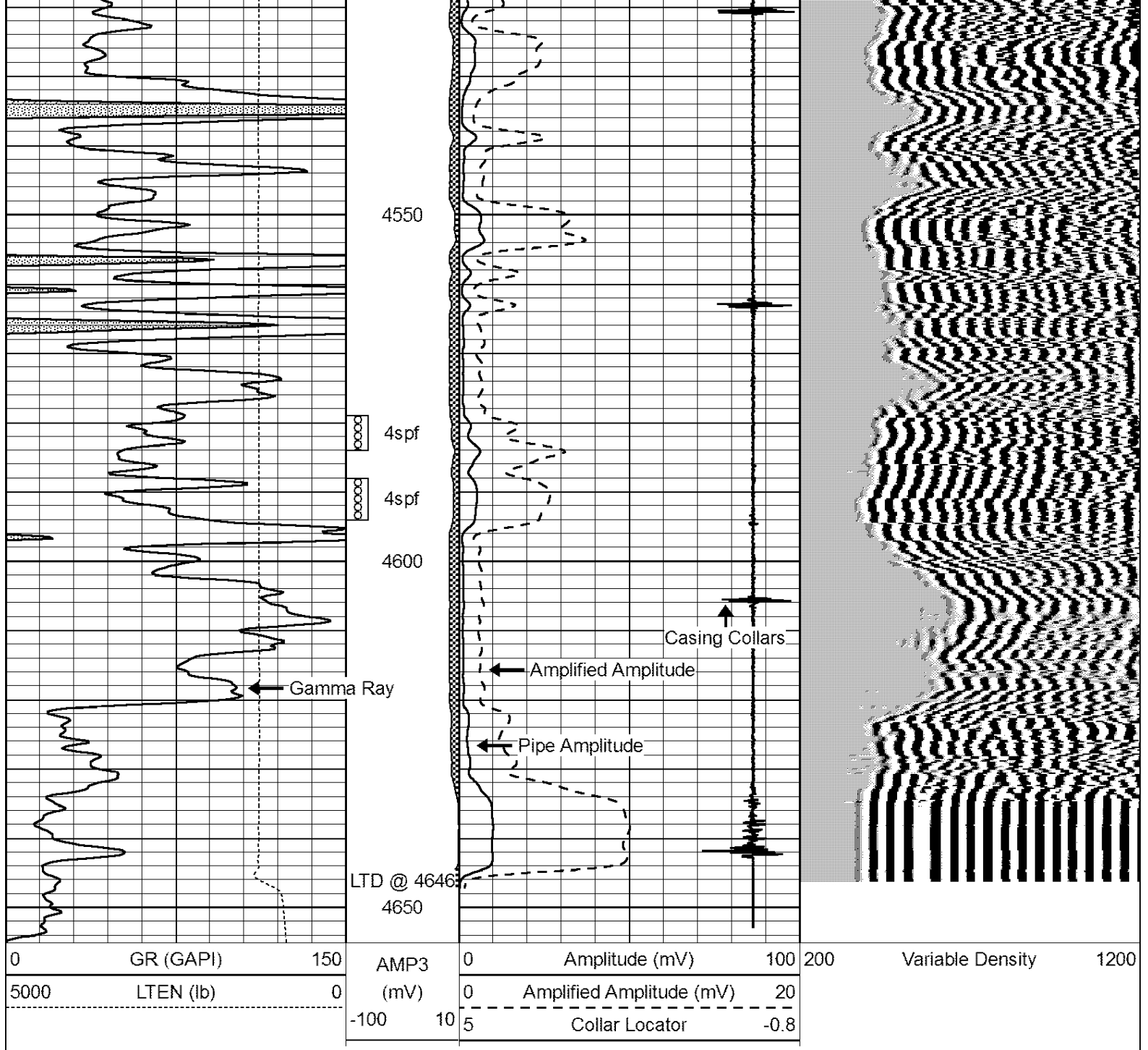
4150

4200

4250







Repeat Section

Database File: shakespeare.db
 Dataset Pathname: glassman_/grcbl/pass3
 Presentation Format: cbl dig
 Dataset Creation: Tue Apr 12 09:04:01 2011 by Log SCH 110223
 Charted by: Depth in Feet scaled 1:240

| | | | | | | | | | |
|------|-----------|-----|---------|---|--------------------------|------|-----|------------------|------|
| 0 | GR (GAPI) | 150 | AMP3 | 0 | Amplitude (mV) | 100 | 200 | Variable Density | 1200 |
| 5000 | LTEN (lb) | 0 | (mV) | 0 | Amplified Amplitude (mV) | 20 | | | |
| | | | -100 10 | 3 | Collar Locator | -0.6 | | | |

