



SUPERIOR
Hays,
Kansas

MICRO
LOG

Company ETERNITY EXPLORATION, LLC.
Well VERNA MARIE GEORGE #1
Field
County THOMAS
State KANSAS

Company ETERNITY EXPLORATION, LLC.
Well VERNA MARIE GEORGE #1
Field
County THOMAS State KANSAS

Location: API # : 15-193-20789-0000
2310' FNL & 2075' FWL
W/2 - SE - SE - NW
SEC 36 TWP 10S RGE 32W
Permanent Datum GROUND LEVEL Elevation 2999
Log Measured From KELLY BUSHING 5' A.G.L.
Drilling Measured From KELLY BUSHING
Other Services
CDL/CNL
DIL
Elevation
K.B. 3004
D.F. 3002
G.L. 2999

Date	3/23/11		
Run Number	TWO		
Depth Driller	4720		
Depth Logger	4718		
Bottom Logged Interval	4716		
Top Log Interval	3600		
Casing Driller	8 5/8" @ 235		
Casing Logger	234		
Bit Size	7 7/8		
Type Fluid in Hole	CHEMICAL MUD	CHLORIDES 3000 PPM	
Density / Viscosity	9.5/55		
pH / Fluid Loss	10.5/6.4		
Source of Sample	FLOWLINE		
Rin @ Meas. Temp	.85 @ 81F		
Rmf @ Meas. Temp	.63 @ 81F		
Rmc @ Meas. Temp	1.02 @ 81F		
Source of Rmf / Rmc	MEASURED		
Rin @ BHT	.62 @ 110F		
Time Circulation Stopped	2 HOURS		
Time Logger on Bottom			
Maximum Recorded Temperature	110F		
Equipment Number	680		
Location	HAYS, KS.		
Recorded By	JEFF GRONEMEG		
Witnessed By	SCOTT ALBERG	CARLO UGOLINI	

<<< Fold Here >>>

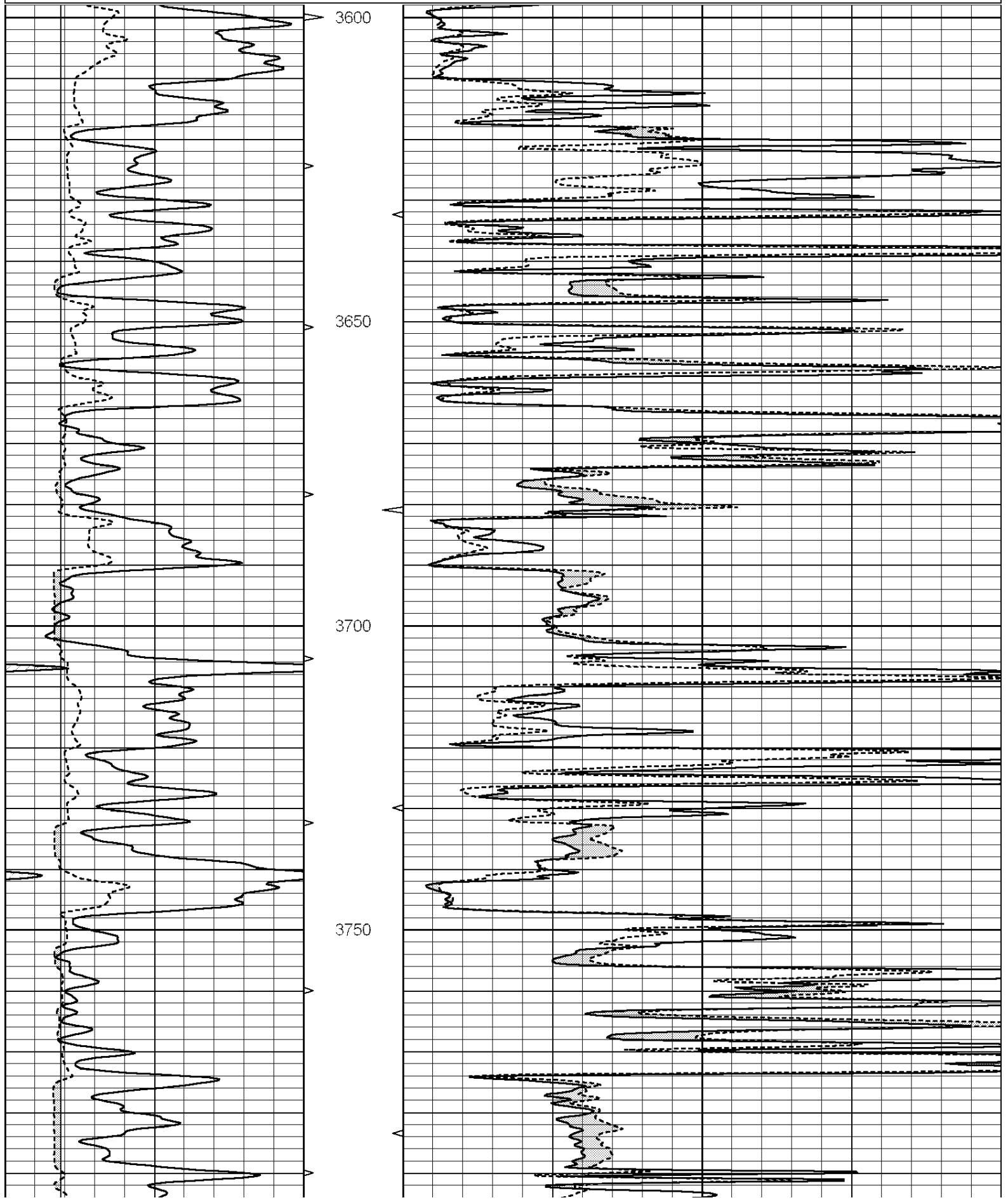
All interpretations are opinions based on inferences from electrical or other measurements and we cannot and do not guarantee the accuracy or correctness of any interpretation, and we shall not, except in the case of gross or willful negligence on our part, be liable or responsible for any loss, costs, damages, or expenses incurred or sustained by anyone resulting from any interpretation made by any of our officers, agents or employees. These interpretations are also subject to our general terms and conditions set out in our current Price Schedule.

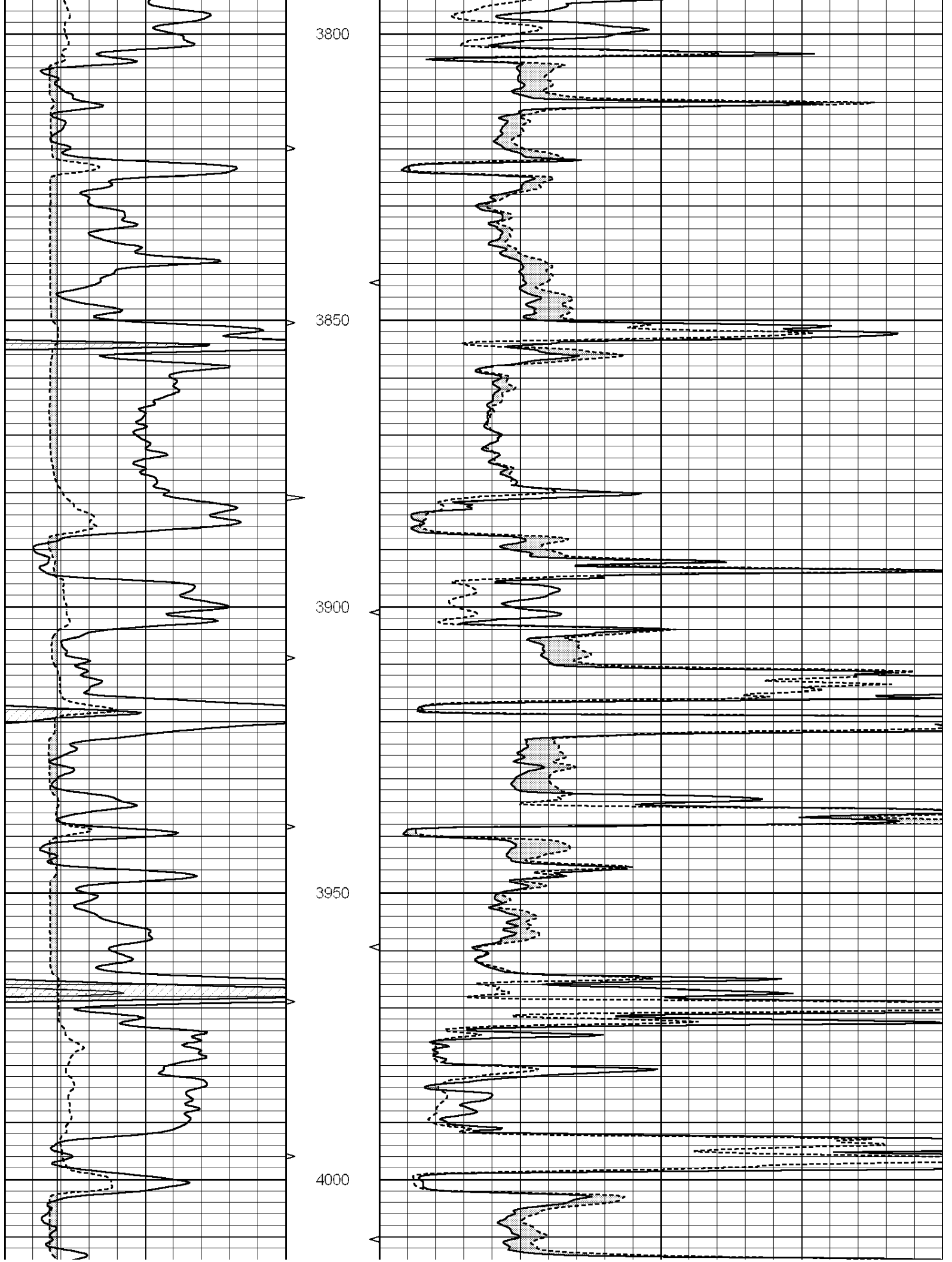
Comments

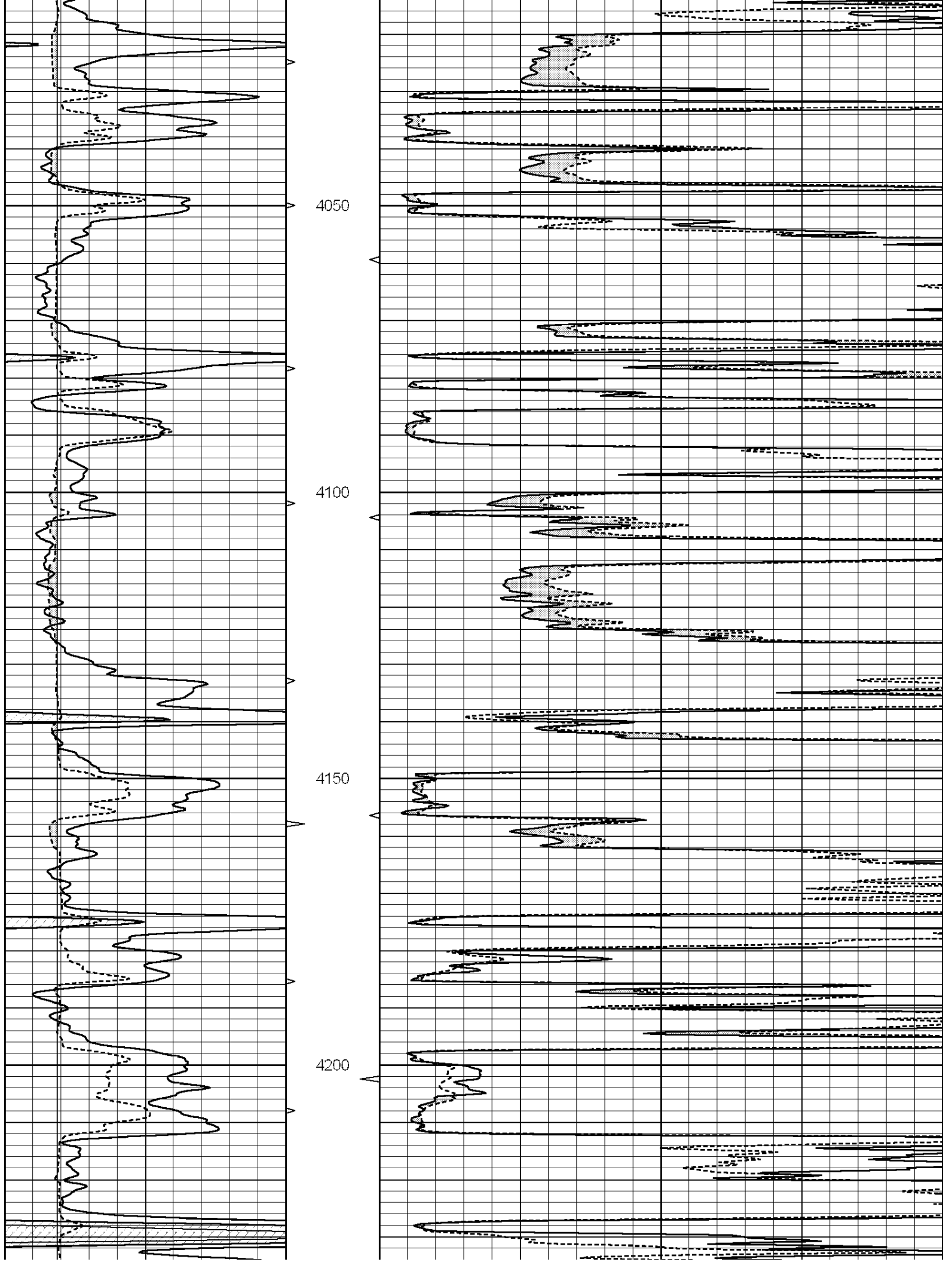
THANK YOU FOR USING SUPERIOR WELL SERVICE (785) 628-6395
DIRECTIONS
OAKLEY, KS - INTERSECTION OF I-70 AND HWY 40 - 1 MILE WEST TO RD 450
1 MILE NORTH TO RD T - 1 MILE WEST TO RD CH30 - 1/2 MILE NORTH
EAST & NORTH INTO

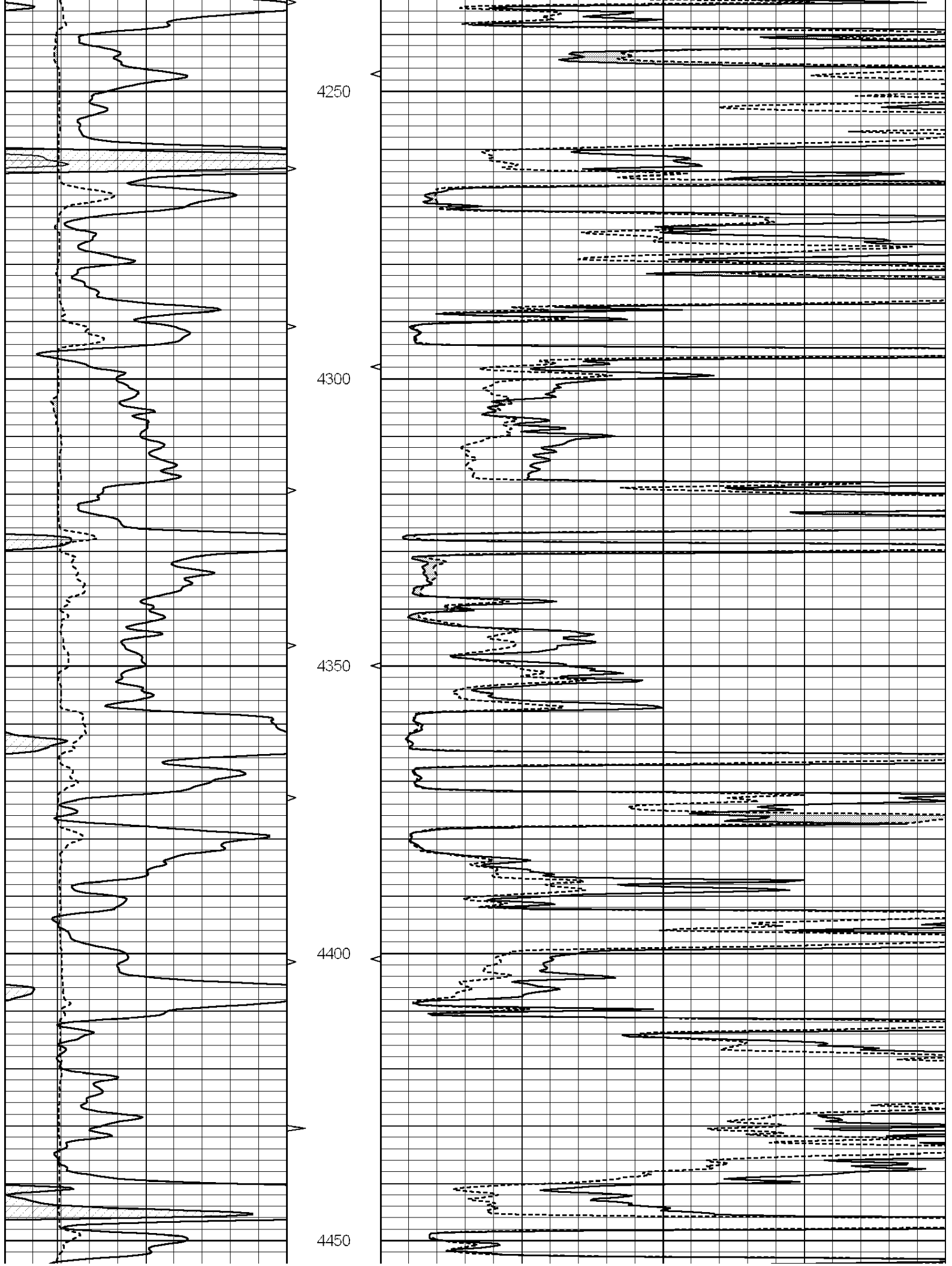
Database File: 006795ddn.db
Dataset Pathname: pass7
Presentation Format: _micro
Dataset Creation: Mon Mar 28 23:04:43 2011 by Log Open-Cased 090629
Charted by: Depth in Feet scaled 1:240

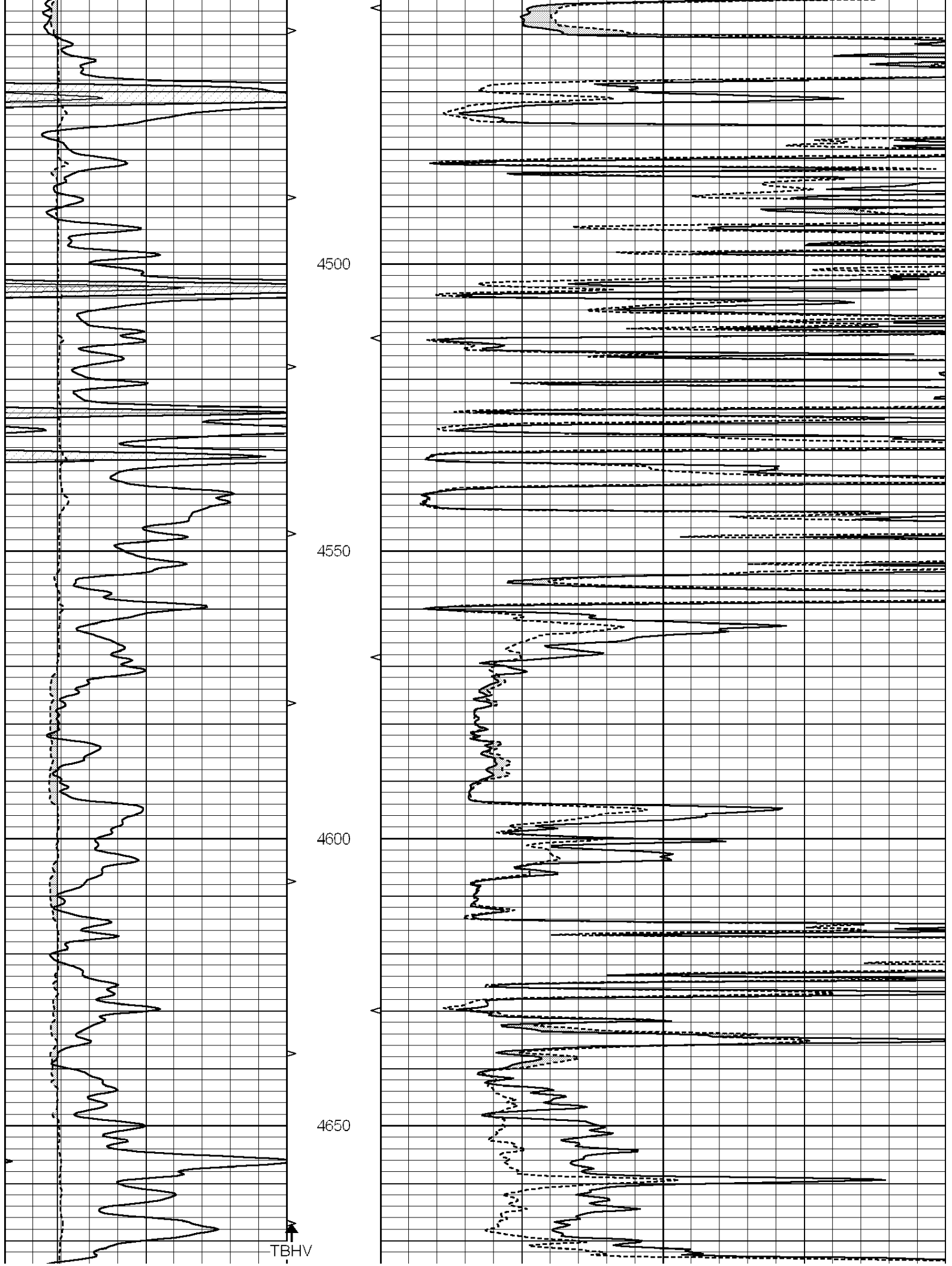
0	GAMMA RAY (GAPI)	150	ABHV	0	MEL1.5 (Ohm-m)	40
6	CALIPER (in)	16	10 (ft3)	0 0	MEL2.0 (Ohm-m)	40
			TBHV			
			0 (ft3)			

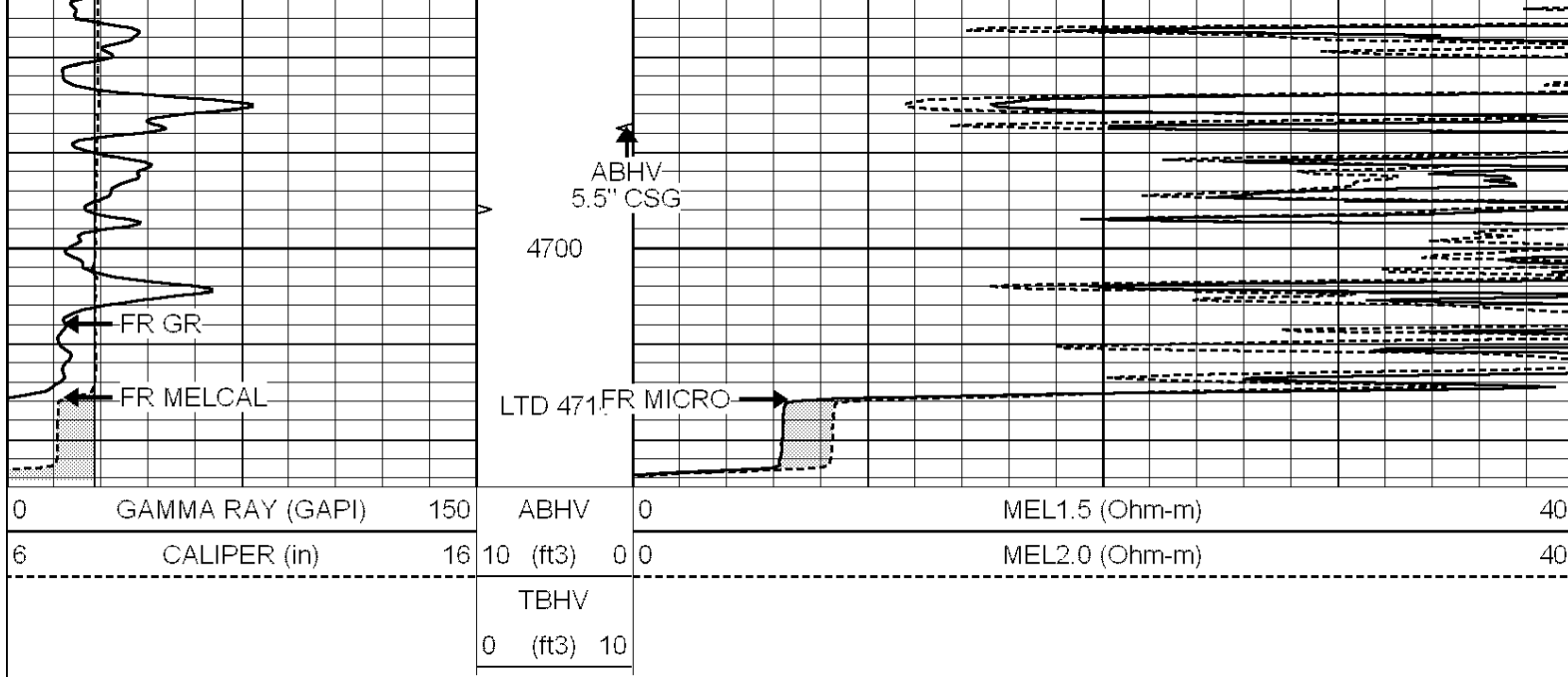












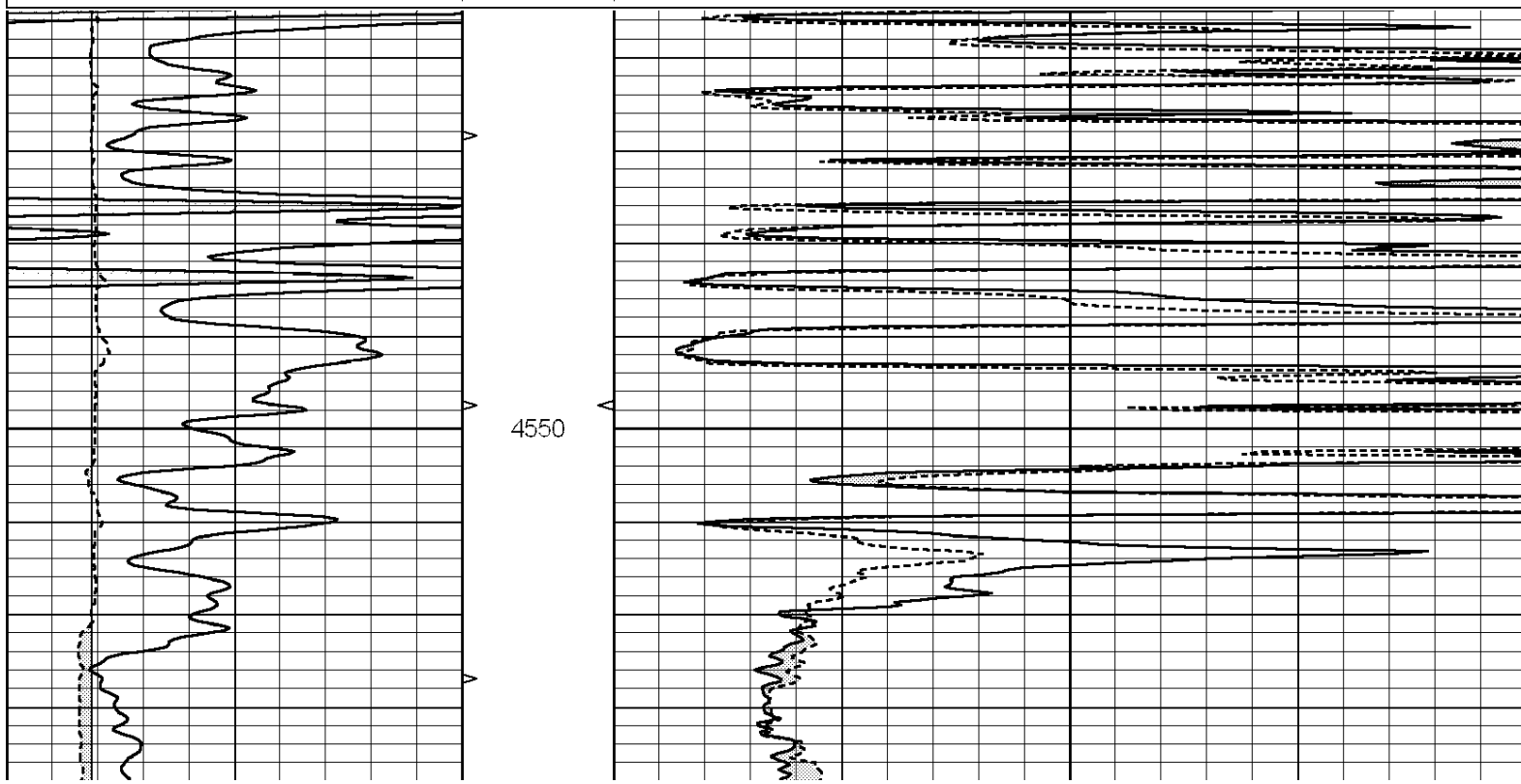
SUPERIOR
WELL SERVICES

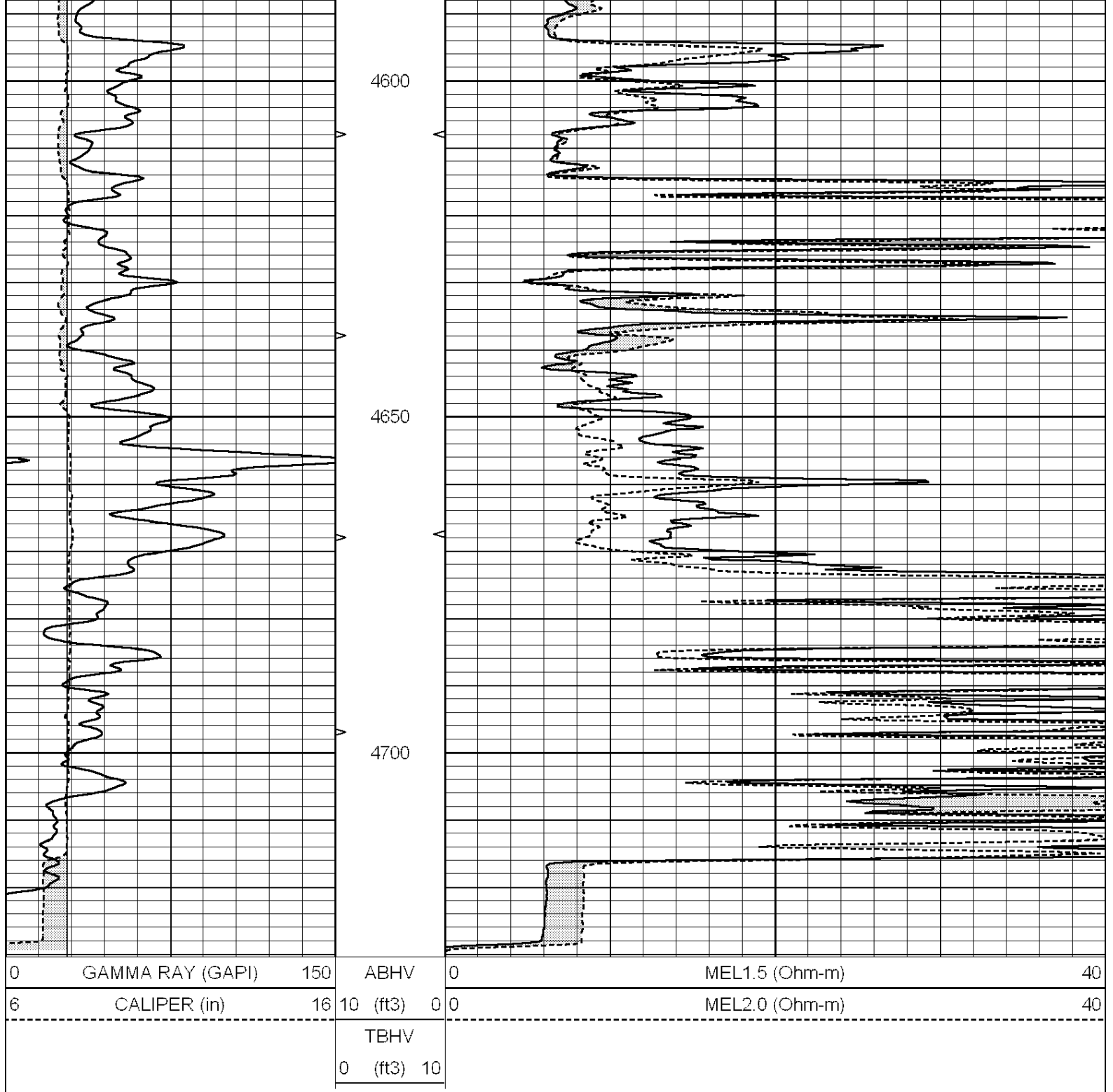
SUPERIOR
Hays,
Kansas

REPEAT SECTION

Database File: 006795ddn.db
 Dataset Pathname: pass6.1
 Presentation Format: _micro
 Dataset Creation: Mon Mar 28 23:02:23 2011 by Calc Open-Cased 090629
 Charted by: Depth in Feet scaled 1:240

0	GAMMA RAY (GAPI)	150	ABHV	0	MEL1.5 (Ohm-m)	40
6	CALIPER (in)	16	10 (ft3)	0	MEL2.0 (Ohm-m)	40
			TBHV			
			0 (ft3)	10		





Calibration Report

Database File: 006795ddn.db
 Dataset Pathname: pass7
 Dataset Creation: Mon Mar 28 23:04:43 2011 by Log Open-Cased 090629

MICRO Calibration Report

Serial Number: MICRO6
 Tool Model: PROBE
 Performed: Mon Feb 21 21:46:51 2011

Caliper Calibration: Gain=5.211 Offset=0.160

References	Low Cal	High Cal
Readings	8.000	14.000
	1.178	2.330

1.5" Calibration:	Gain=35.000	Offset=-0.650
References	Low Cal 0.000	High Cal 20.000
Readings	0.008	1.200

2" Calibration:	Gain=32.000	Offset=0.000
References	Low Cal 0.000	High Cal 20.000
Readings	0.008	0.888

Gamma Ray Calibration Report

Serial Number:	#8	
Tool Model:	OPEN	
Performed:	Fri Feb 18 03:07:29 2011	
Calibrator Value:	150.0	GAPI
Background Reading:	0.0	cps
Calibrator Reading:	175.0	cps
Sensitivity:	0.9571	GAPI/cps