



SUPERIOR
Hays,
Kansas

**COMPENSATED
DENSITY/NEUTRON
LOG**

Company ETERNITY EXPLORATION, LLC.
Well VERNA MARIE GEORGE #1
Field
County THOMAS
State KANSAS

Company ETERNITY EXPLORATION, LLC.
Well VERNA MARIE GEORGE #1
Field
County THOMAS State KANSAS

Location: API # : 15-193-20789-0000
2310' FNL & 2075' FWL
W/2 - SE - SE - NW
SEC 36 TWP 10S RGE 32W
Permanent Datum GROUND LEVEL Elevation 2999
Log Measured From KELLY BUSHING 5' A.G.L.
Drilling Measured From KELLY BUSHING
Other Services
DIL/MEL
Elevation
K.B. 3004
D.F. 3002
G.L. 2999

Date	3/23/11		
Run Number	ONE		
Depth Driller	4720		
Depth Logger	4718		
Bottom Logged Interval	4696		
Top Log Interval	3600		
Casing Driller	8 5/8" @ 235		
Casing Logger			
Bit Size	7 7/8		
Type Fluid in Hole	CHEMICAL MUD	CHLORIDES 3000 PPM	
Density / Viscosity	9.5/55		
pH / Fluid Loss	10.5/6.4		
Source of Sample	FLOWLINE		
Rin @ Meas. Temp	.85 @ 81F		
Rmf @ Meas. Temp	.63 @ 81F		
Rmc @ Meas. Temp	1.02 @ 81F		
Source of Rmf / Rmc	MEASURED		
Rin @ BHT	.62 @ 110F		
Time Circulation Stopped	2 HOURS		
Time Logger on Bottom			
Maximum Recorded Temperature	110F		
Equipment Number	680		
Location	HAYS, KS.		
Recorded By	JEFF GRONEMEG		
Witnessed By	SCOTT ALBERG	CARLO UGOLINI	

<<< Fold Here >>>

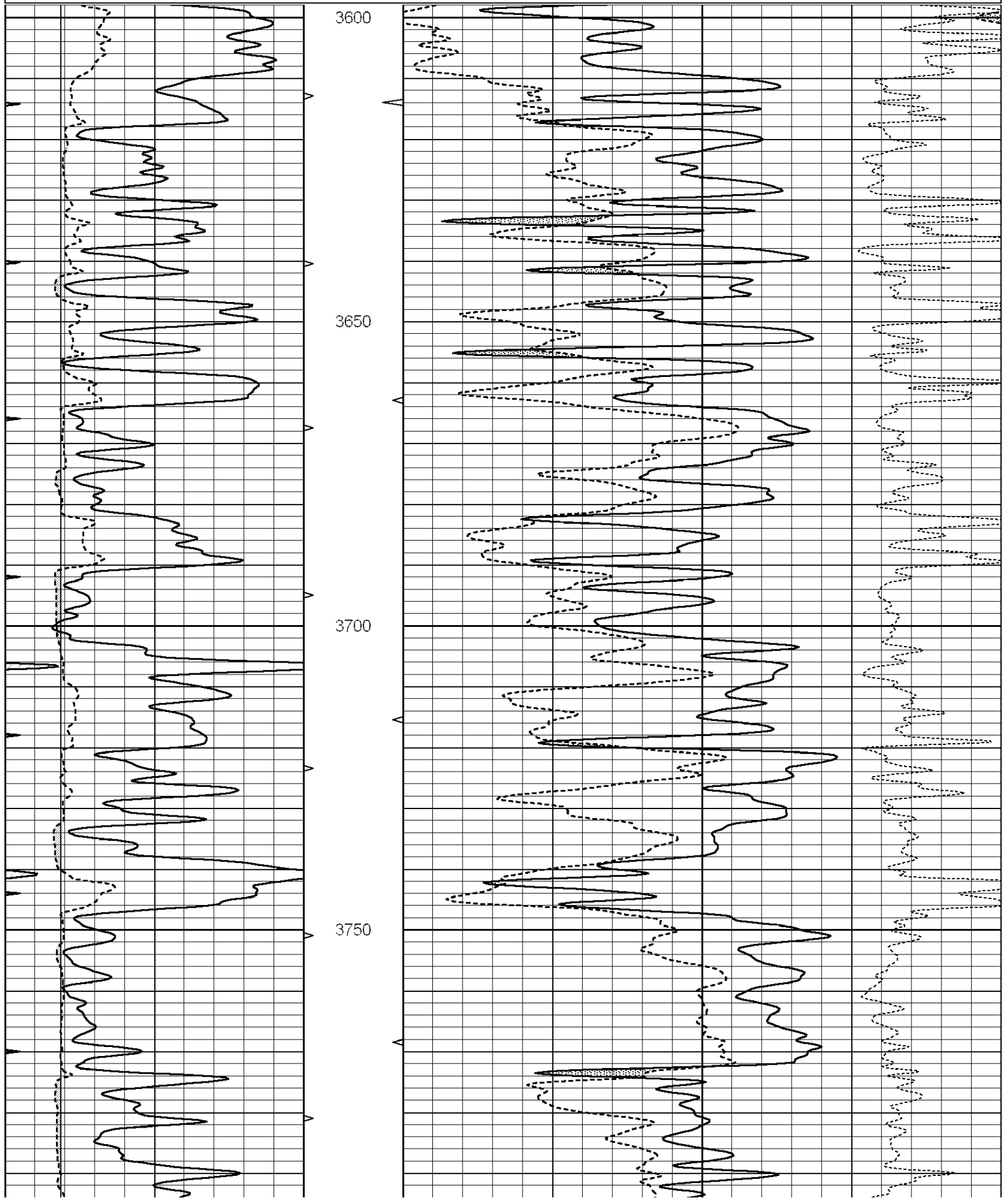
All interpretations are opinions based on inferences from electrical or other measurements and we cannot and do not guarantee the accuracy or correctness of any interpretation, and we shall not, except in the case of gross or willful negligence on our part, be liable or responsible for any loss, costs, damages, or expenses incurred or sustained by anyone resulting from any interpretation made by any of our officers, agents or employees. These interpretations are also subject to our general terms and conditions set out in our current Price Schedule.

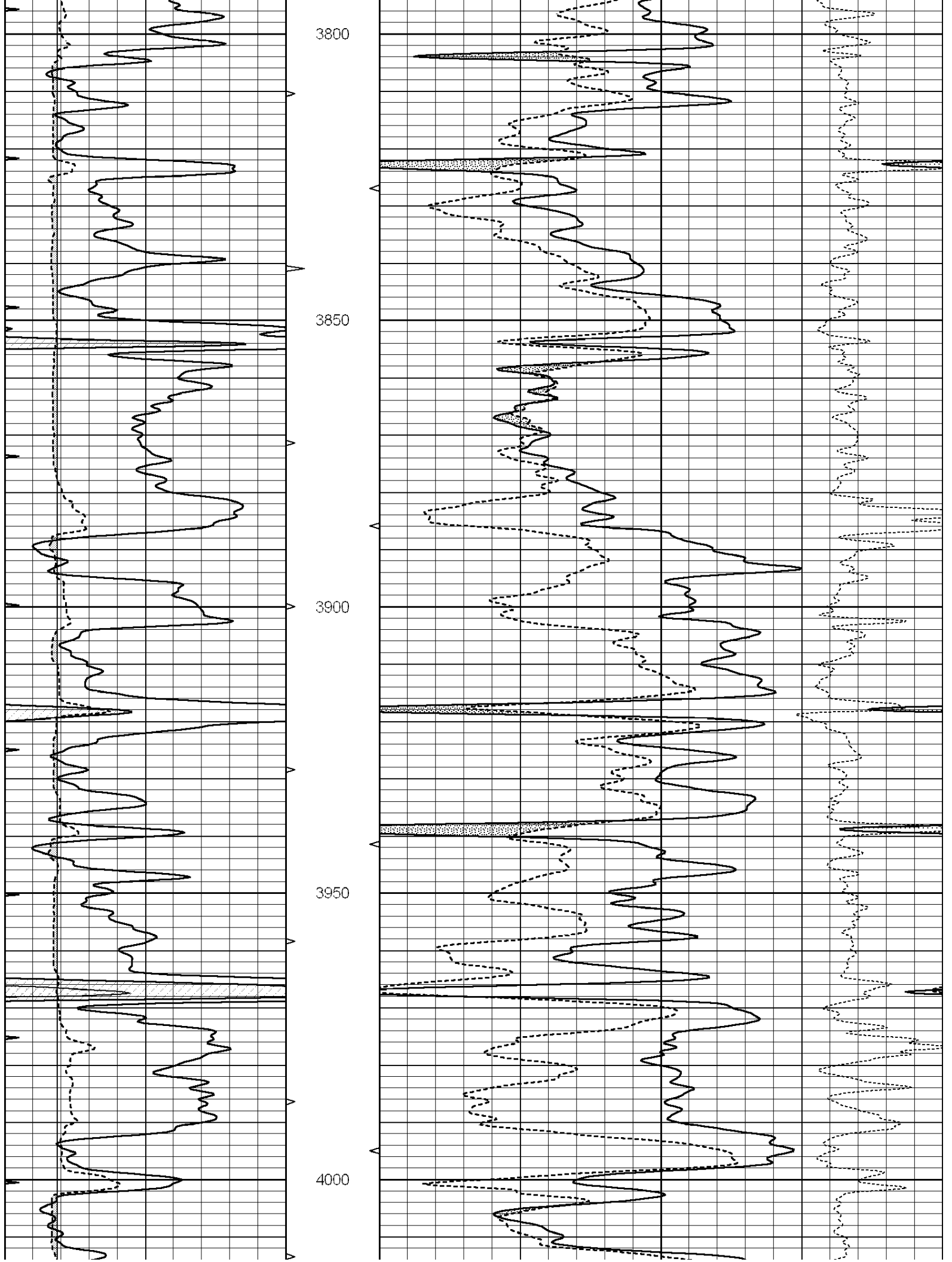
Comments

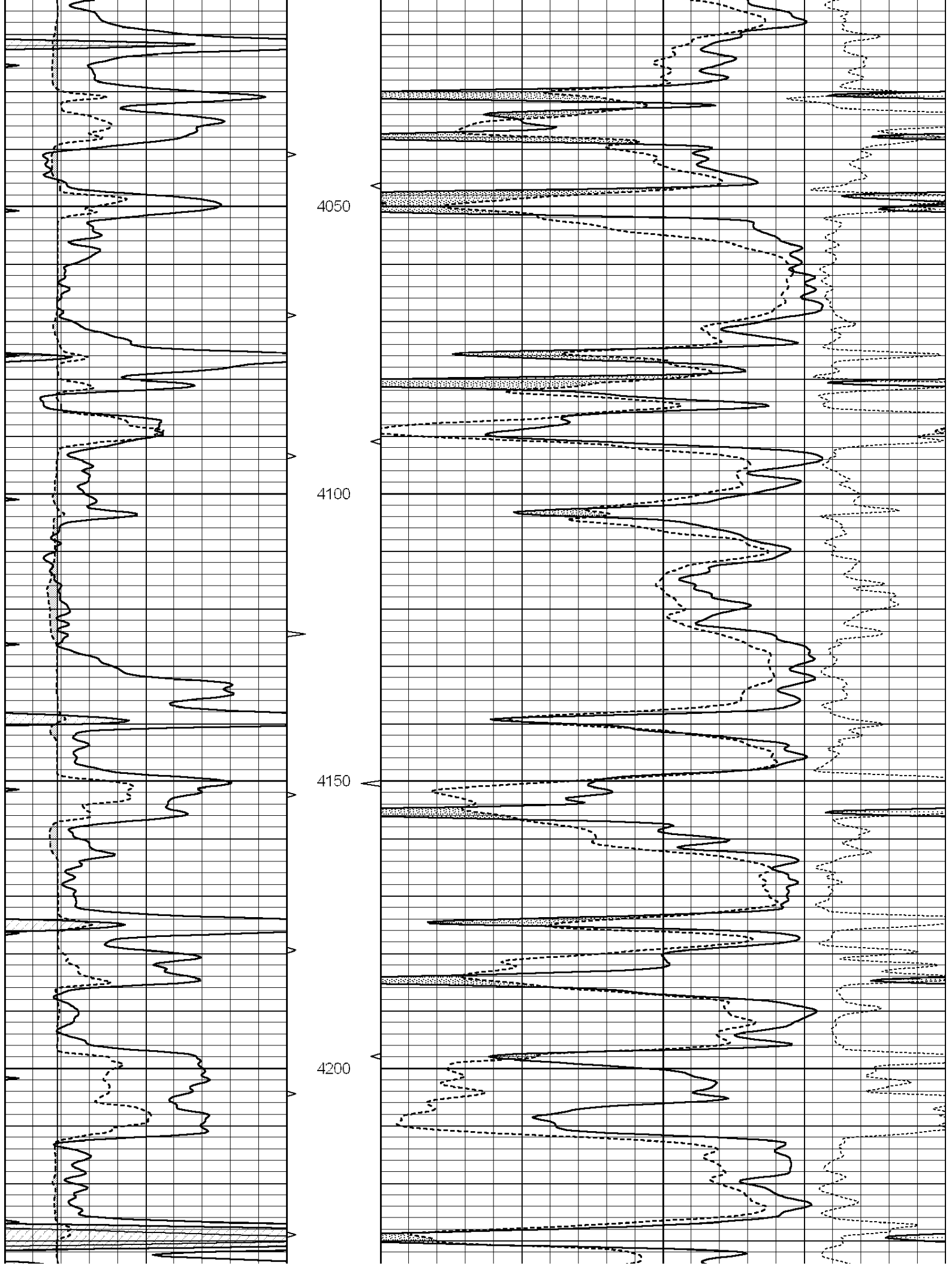
THANK YOU FOR USING SUPERIOR WELL SERVICE (785) 628-6395
DIRECTIONS
OAKLEY, KS - INTERSECTION OF I-70 AND HWY 40 - 1 MILE WEST TO RD 450
1 MILE NORTH TO RD T - 1 MILE WEST TO RD CH30 - 1/2 MILE NORTH
EAST & NORTH INTO

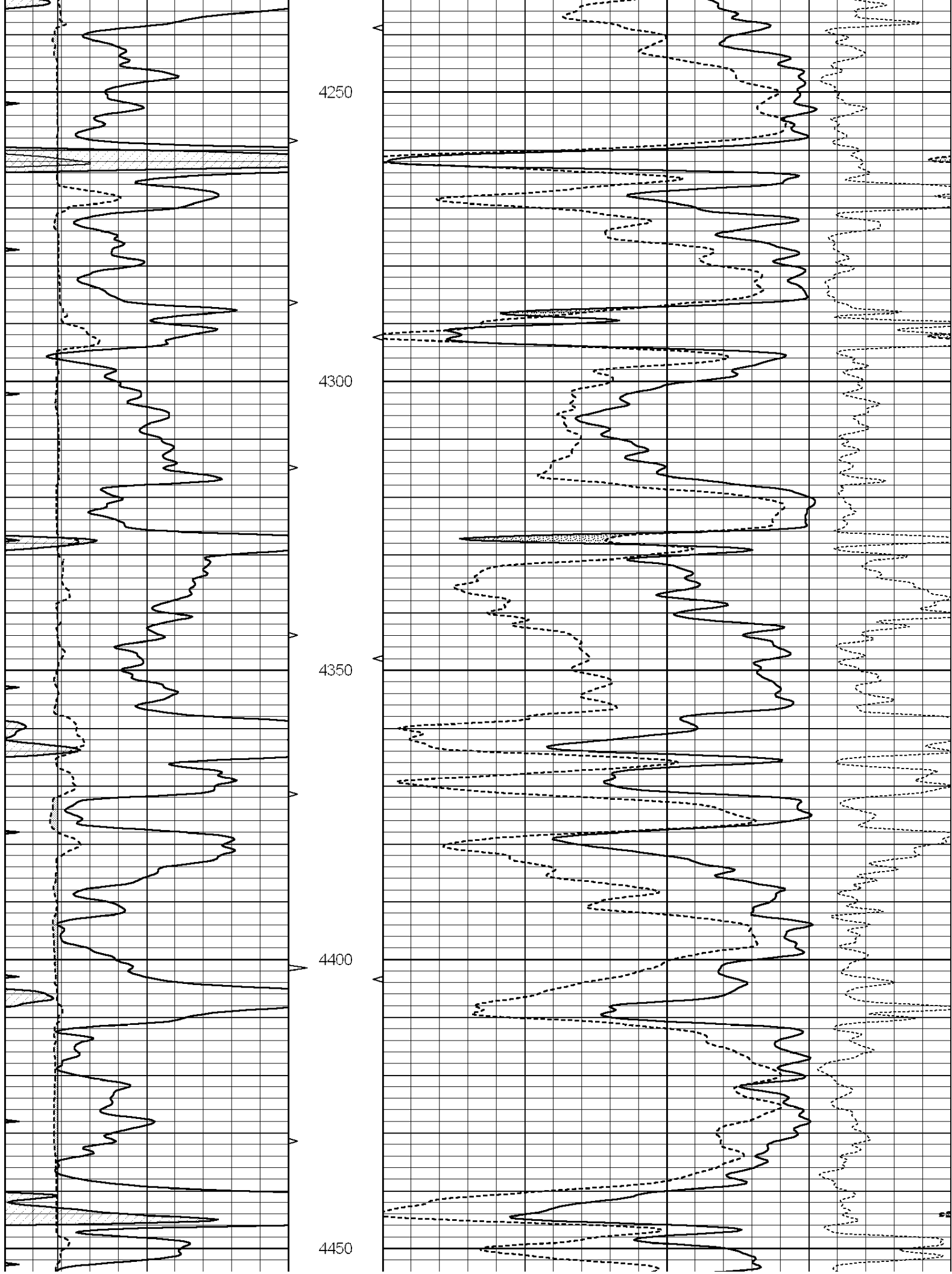
Database File: 006795ddn.db
Dataset Pathname: pass5.4
Presentation Format: _den_neu
Dataset Creation: Mon Mar 28 21:34:59 2011
Charted by: Depth in Feet scaled 1:240

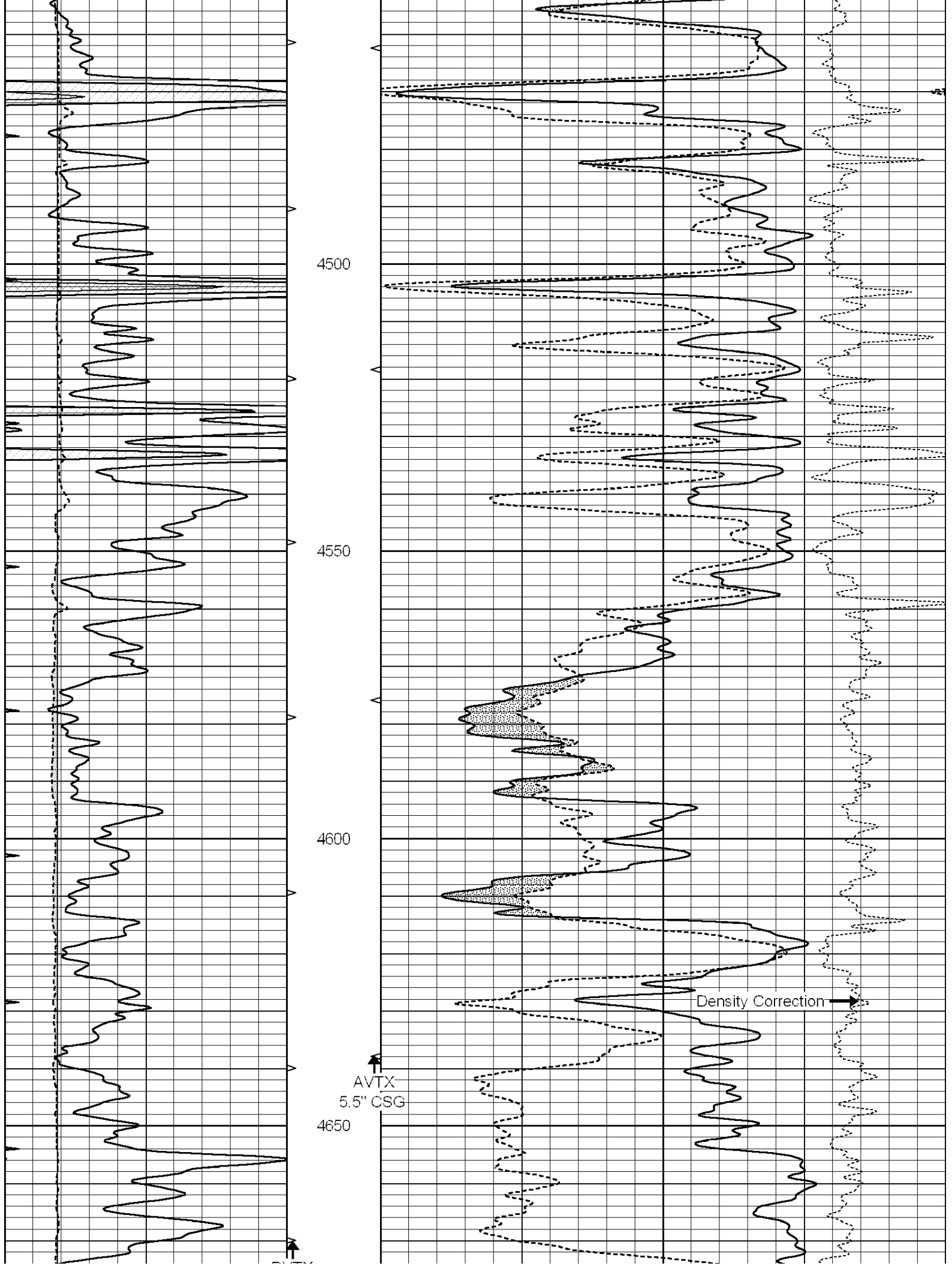
0	GAMMA RAY (GAPI)	150	AVTX	30	COMPENSATED DENSITY (pu)	-10
6	CALIPER (in)	16	10 (ft3)	0 30	COMPENSATED NEUTRON (pu)	-10
0	MINMK	20	BVTX		-0.25 CORRECTION (g/cc)	0.25
			0 (ft3)	10		

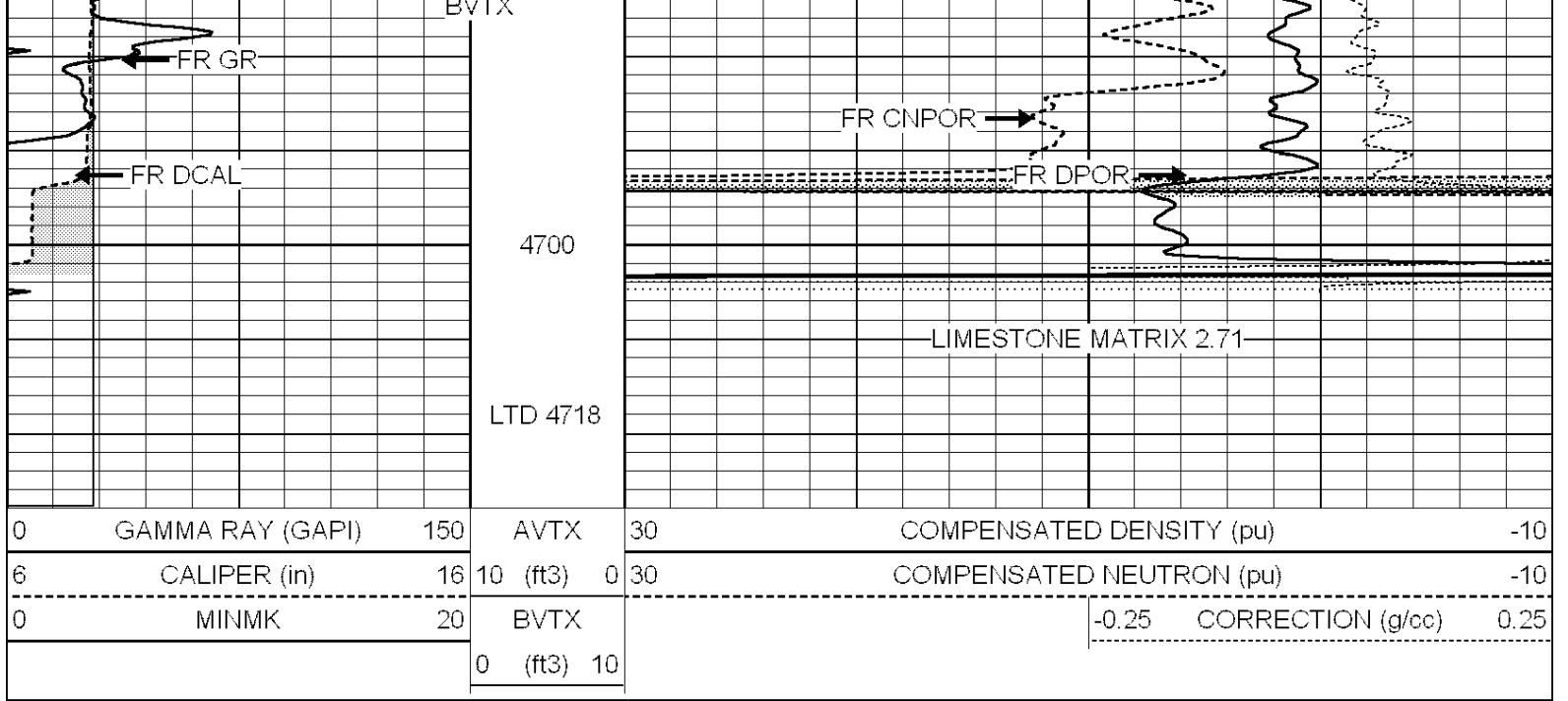










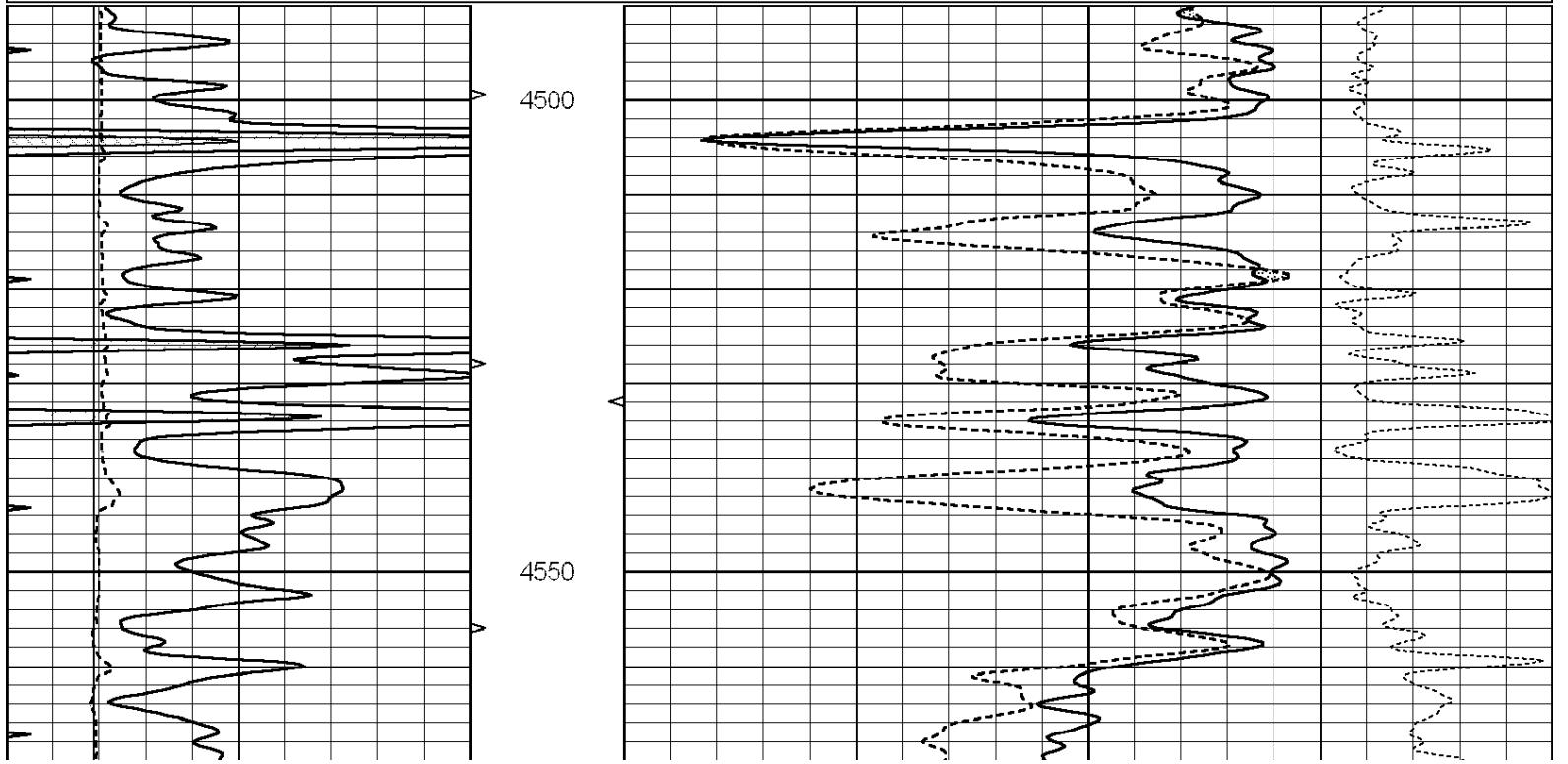


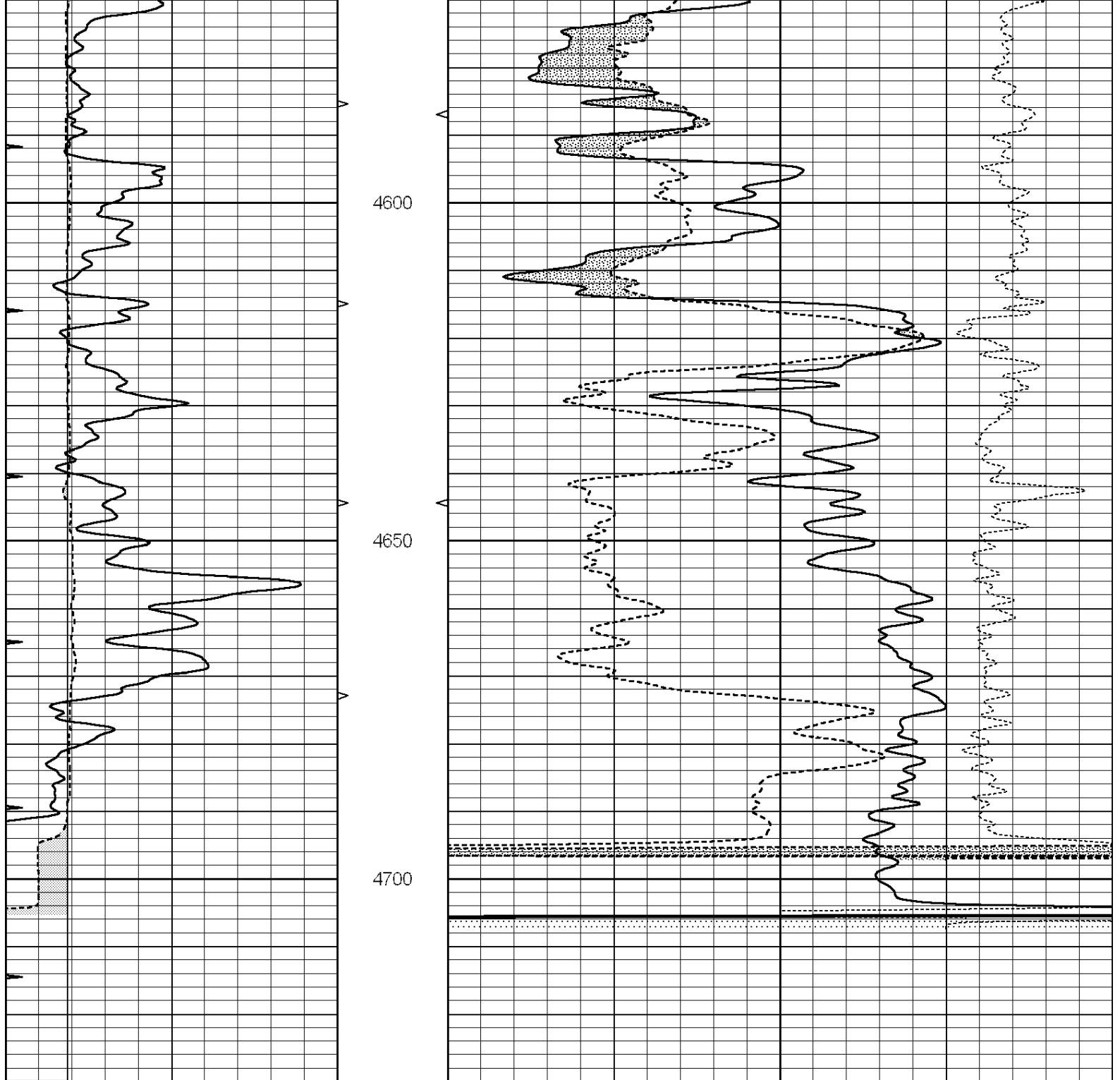
SUPERIOR
Hays,
Kansas

REPEAT SECTION

Database File: 006795ddn.db
 Dataset Pathname: pass3.3
 Presentation Format: _den_neu
 Dataset Creation: Mon Mar 28 22:42:19 2011
 Charted by: Depth in Feet scaled 1:240

0	GAMMA RAY (GAPI)	150	AVTX	30	COMPENSATED DENSITY (pu)	-10
6	CALIPER (in)	16	10 (ft3)	0 30	COMPENSATED NEUTRON (pu)	-10
0	MINMK	20	BVTX		-0.25	CORRECTION (g/cc) 0.25
			0 (ft3)	10		





0	GAMMA RAY (GAPI)	150	AVTX	30	COMPENSATED DENSITY (pu)	-10
6	CALIPER (in)	16	10 (ft3)	0 30	COMPENSATED NEUTRON (pu)	-10
0	MINMK	20	BVTX		-0.25 CORRECTION (g/cc)	0.25
			0 (ft3)	10		

Calibration Report

Database File: 006795ddn.db
 Dataset Pathname: pass5.4
 Dataset Creation: Mon Mar 28 21:34:59 2011

Dual Induction Calibration Report

Serial-Model: DIL4-GEAR
 Performed: Tue Mar 01 11:19:26 2011

		Readings			References			Results	
Loop:	Air	Loop		Air	Loop		m	b	
Deep	0.008	0.666	V	0.000	400.000	mmho/m	470.000	-6.000	
Medium	-0.003	0.769	V	0.000	462.500	mmho/m	460.000	-3.000	
Internal:	Zero	Cal		Zero	Cal		m	b	
Deep	0.013	0.651	V	0.000	400.000	mmho/m	627.541	-8.365	
Medium	0.020	0.754	V	0.000	462.500	mmho/m	630.311	-12.549	

Compensated Density Calibration Report

Serial-Model: GEAR4-GEARHART
 Source / Verifier: 143 / 143
 Master Calibration Performed: Wed Jan 26 17:58:17 2011

Master Calibration

	Density		Far Detector	Near Detector	
Magnesium	1.710	g/cc	1015.91	497.51	cps
Aluminum	2.610	g/cc	227.67	350.20	cps
Spine Angle = 76.79			Density/Spine Ratio = 0.586		
	Size		Reading		
Small Ring	8.20	in	2.50	V	
Large Ring	14.00	in	4.70	V	

Compensated Neutron Calibration Report

Serial Number: 6I
 Tool Model: G

CALIBRATION

Detector	Readings	Target	Normalization
Short Space	1.00 cps	1.00 cps	1.0000
Long Space	1.00 cps	1.00 cps	1.0000

Gamma Ray Calibration Report

Serial Number: #8
 Tool Model: OPEN
 Performed: Fri Feb 18 03:07:29 2011

Calibrator Value: 150.0 GAPI

Background Reading: 0.0 cps
 Calibrator Reading: 175.0 cps

Sensitivity: 1.0071 GAPI/cps