



SUPERIOR
Hays,
Kansas

**DUAL
INDUCTION
LOG**

Company ETERNITY EXPLORATION, LLC.
Well VERNA MARIE GEORGE #1
Field
County THOMAS
State KANSAS

Company ETERNITY EXPLORATION, LLC.
Well VERNA MARIE GEORGE #1
Field
County THOMAS State KANSAS

Location: API # : 15-193-20789-0000
2310' FNL & 2075' FWL
W/2 - SE - SE - NW
SEC 36 TWP 10S RGE 32W
Permanent Datum GROUND LEVEL Elevation 2999
Log Measured From KELLY BUSHING 5' A.G.L.
Drilling Measured From KELLY BUSHING
Other Services
CDL/CNL
MEL
Elevation
K.B. 3004
D.F. 3002
G.L. 2999

Date	3/23/11		
Run Number	ONE		
Depth Driller	4720		
Depth Logger	4718		
Bottom Logged Interval	4716		
Top Log Interval	0		
Casing Driller	8 5/8" @ 235		
Casing Logger			
Bit Size	7 7/8		
Type Fluid in Hole	CHEMICAL MUD	CHLORIDES 3000 PPM	
Density / Viscosity	9.5/55		
pH / Fluid Loss	10.5/6.4		
Source of Sample	FLOWLINE		
Rim @ Meas. Temp	.85 @ 81F		
Rmf @ Meas. Temp	.63 @ 81F		
Rmc @ Meas. Temp	1.02 @ 81F		
Source of Rmf / Rmc	MEASURED		
Rim @ BHT	.62 @ 110F		
Time Circulation Stopped	2 HOURS		
Time Logger on Bottom			
Maximum Recorded Temperature	110F		
Equipment Number	680		
Location	HAYS, KS.		
Recorded By	JEFF GRONEMEG		
Witnessed By	SCOTT ALBERG	CARLO UGOLINI	

<<< Fold Here >>>

All interpretations are opinions based on inferences from electrical or other measurements and we cannot and do not guarantee the accuracy or correctness of any interpretation, and we shall not, except in the case of gross or willful negligence on our part, be liable or responsible for any loss, costs, damages, or expenses incurred or sustained by anyone resulting from any interpretation made by any of our officers, agents or employees. These interpretations are also subject to our general terms and conditions set out in our current Price Schedule.

Comments

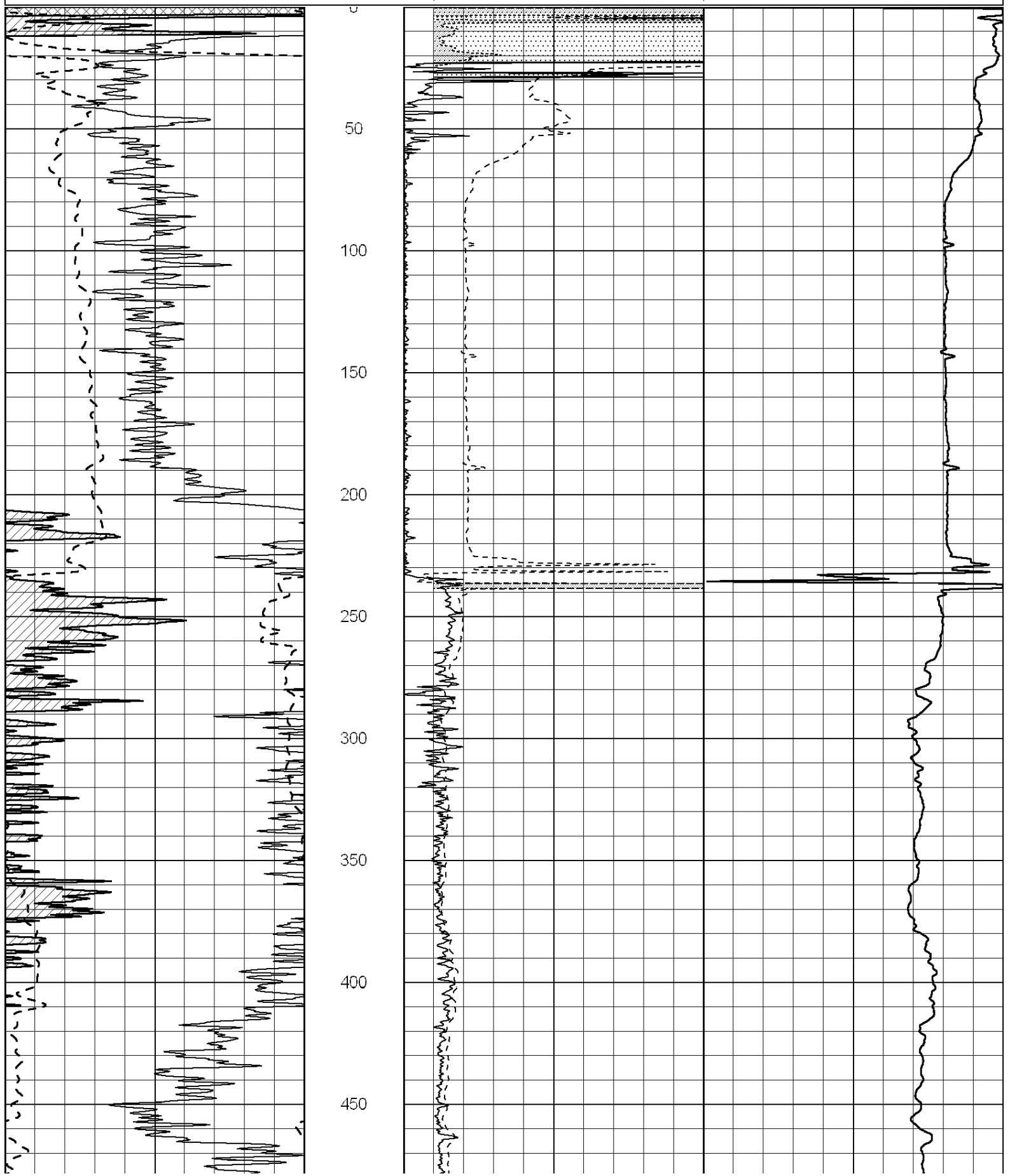
THANK YOU FOR USING SUPERIOR WELL SERVICE (785) 628-6395
DIRECTIONS
OAKLEY, KS - INTERSECTION OF I-70 AND HWY 40 - 1 MILE WEST TO RD 450
1 MILE NORTH TO RD T - 1 MILE WEST TO RD CH30 - 1/2 MILE NORTH
EAST & NORTH INTO

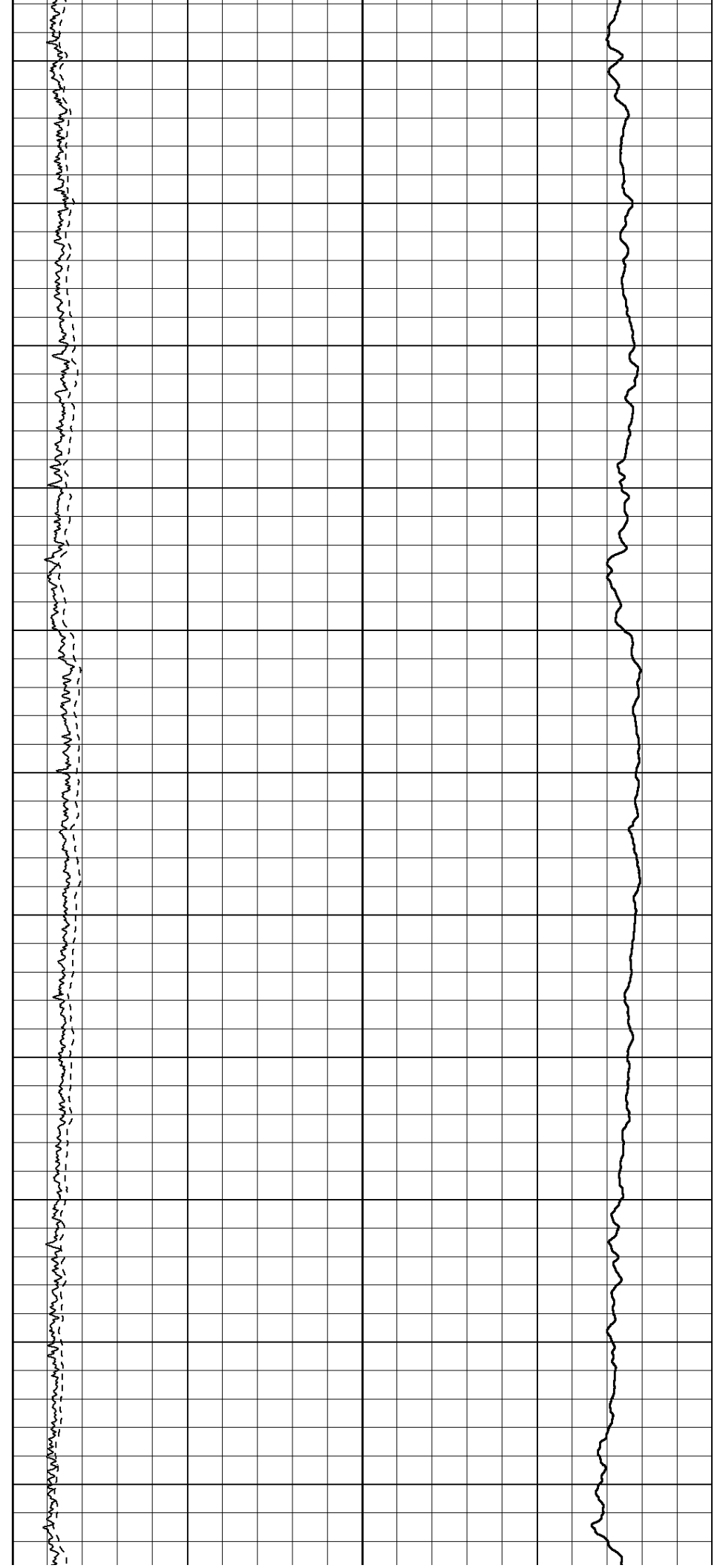
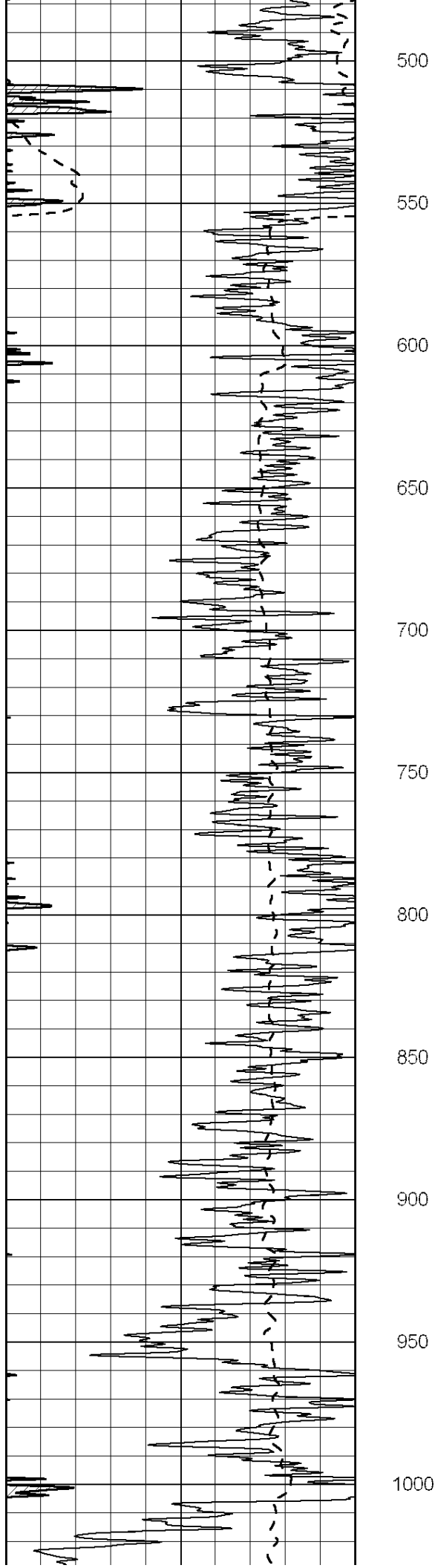
0	Gamma Ray (GAPI)	150
-100	SP (mV)	100

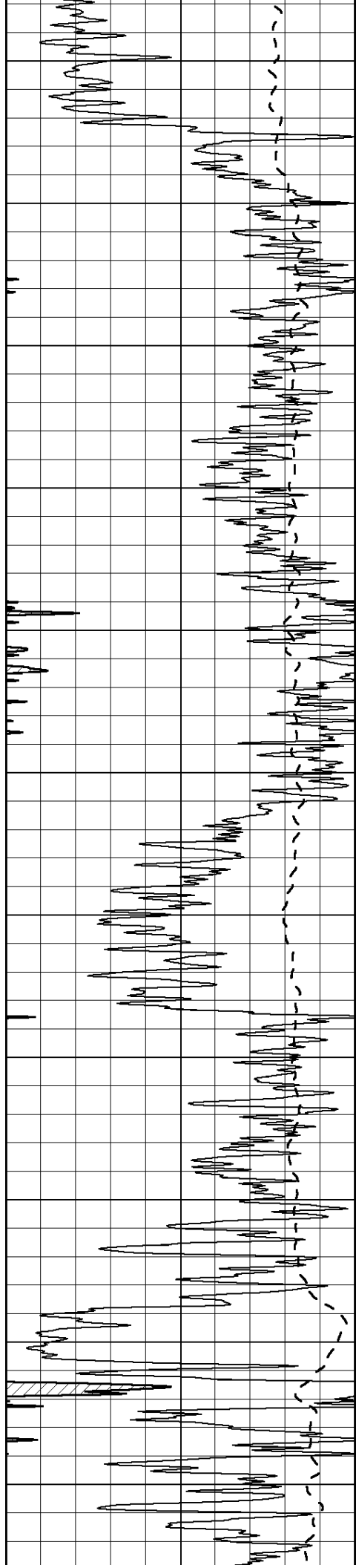
0	RLL3 (Ohm-m)	50
0	Deep Induction (Ohm-m)	50

1000 CILD (mmho/m) 0

50	RILD X10 (Ohm-m)	500
50	RLL3 X10 (Ohm-m)	500







1050

1100

1150

1200

1250

1300

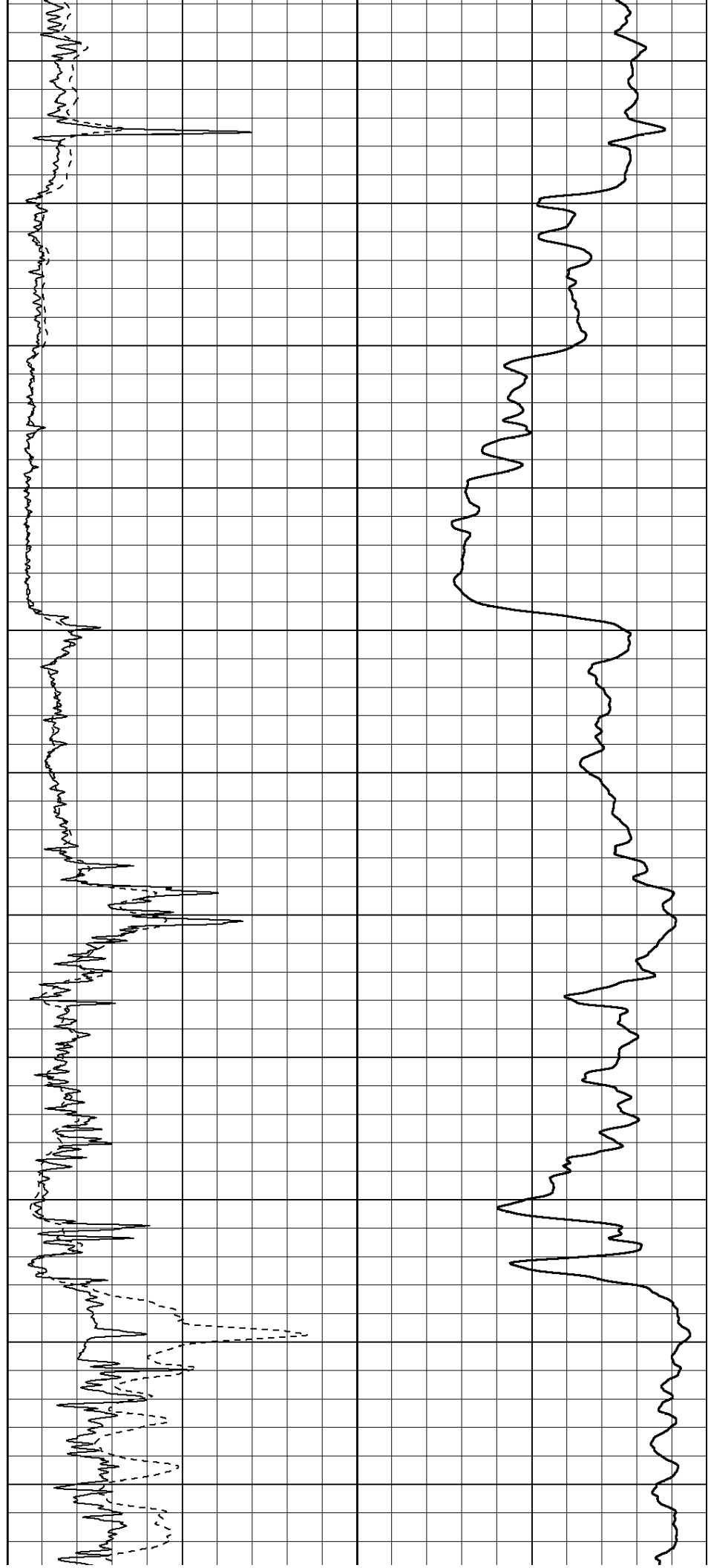
1350

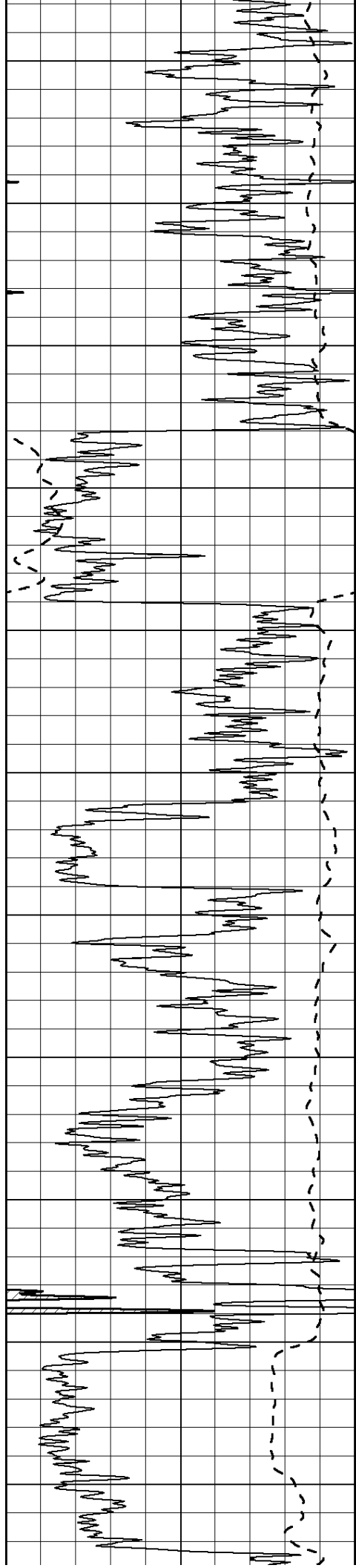
1400

1450

1500

1550





1600

1650

1700

1750

1800

1850

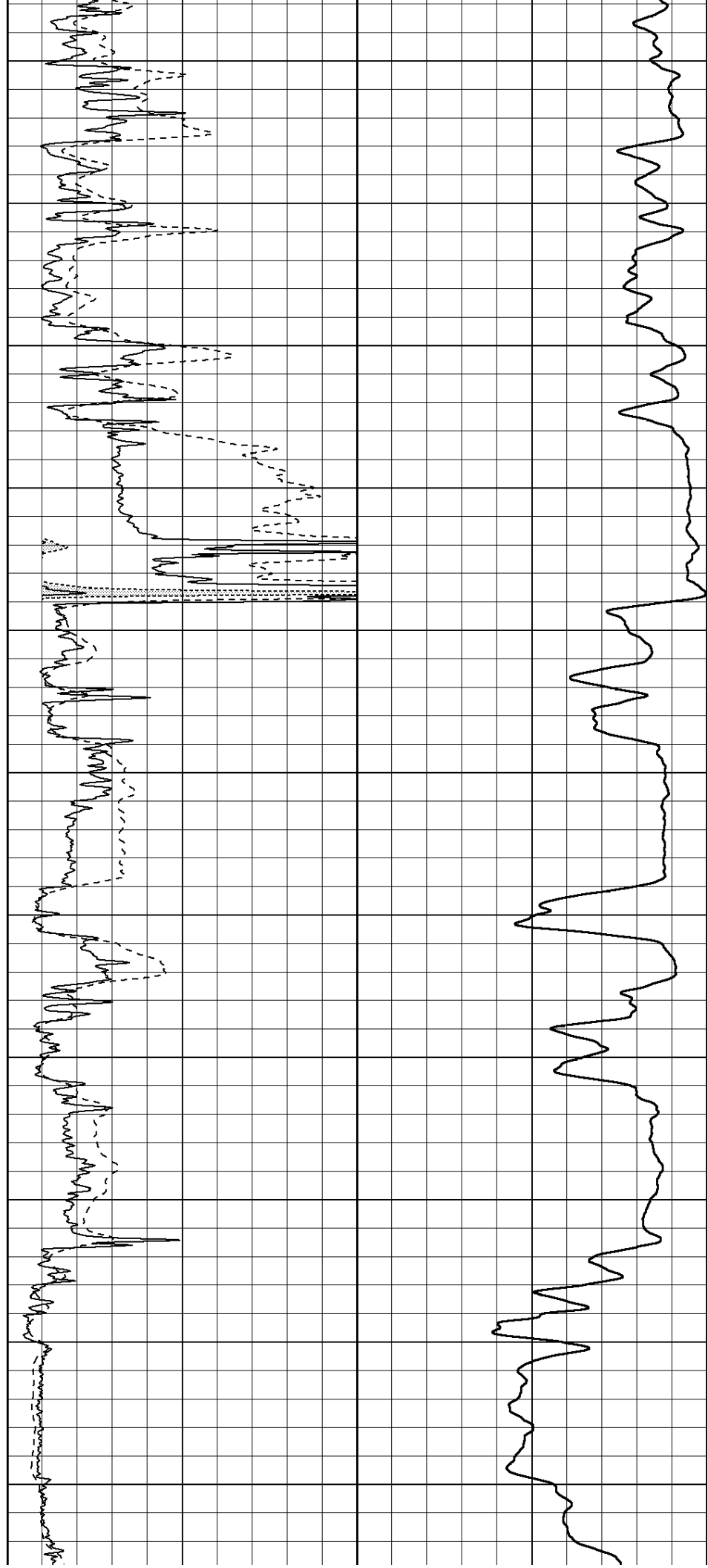
1900

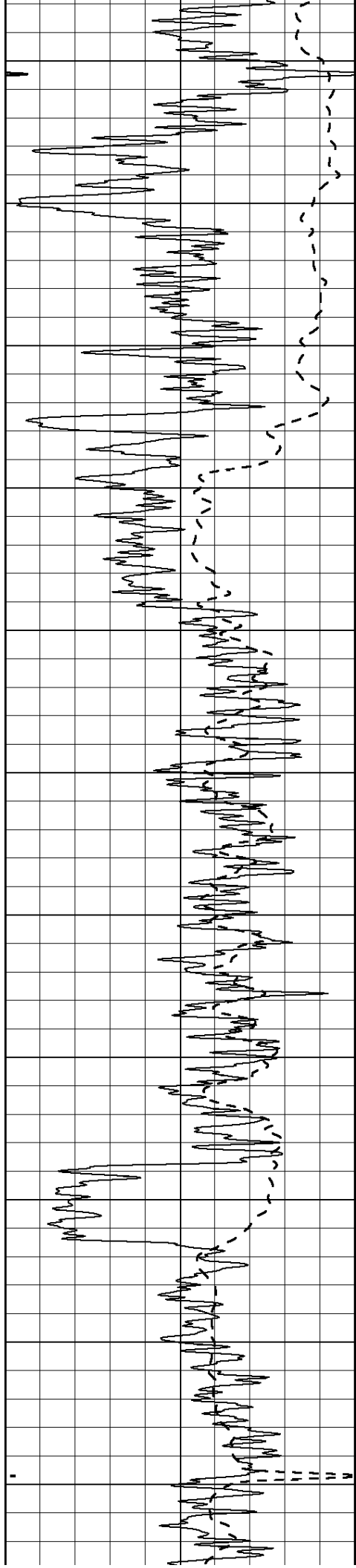
1950

2000

2050

2100





2150

2200

2250

2300

2350

2400

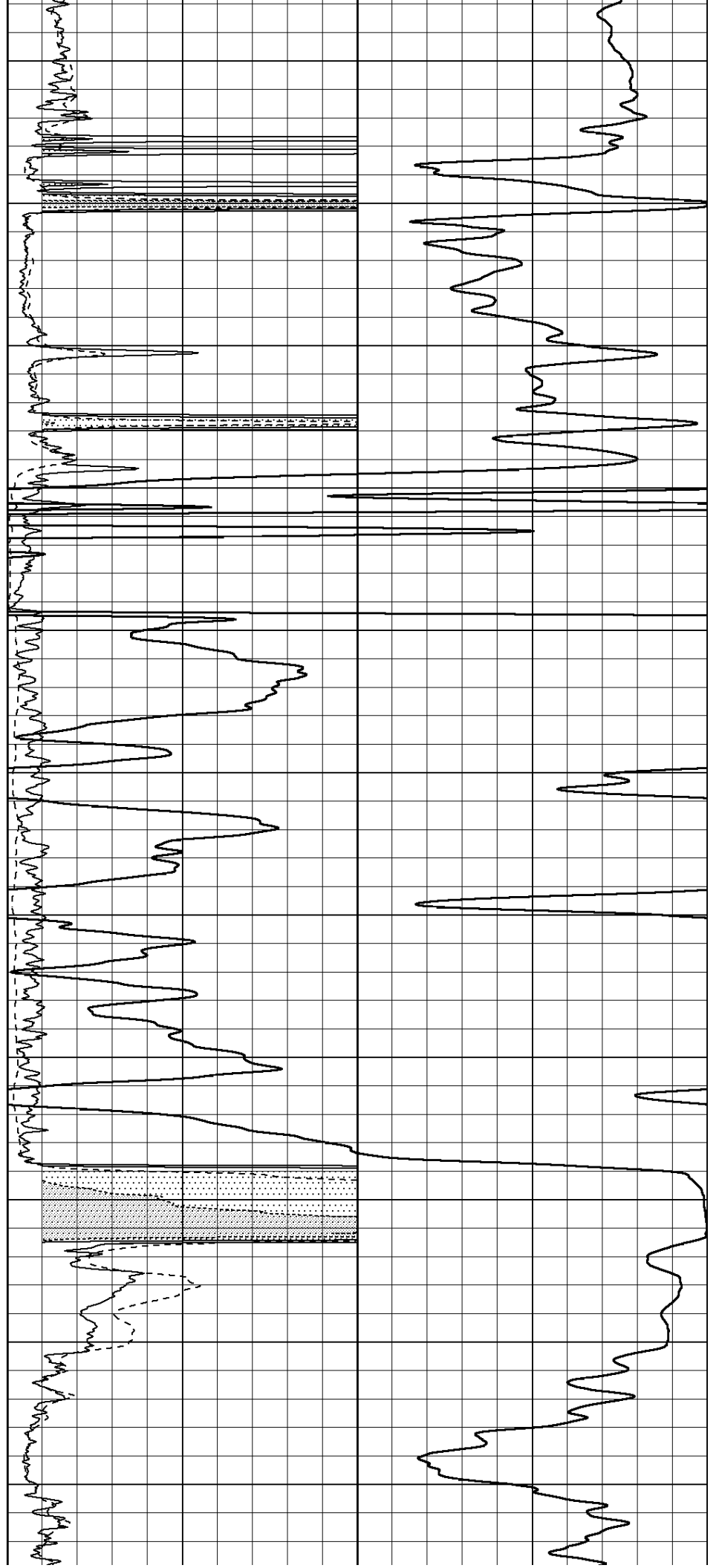
2450

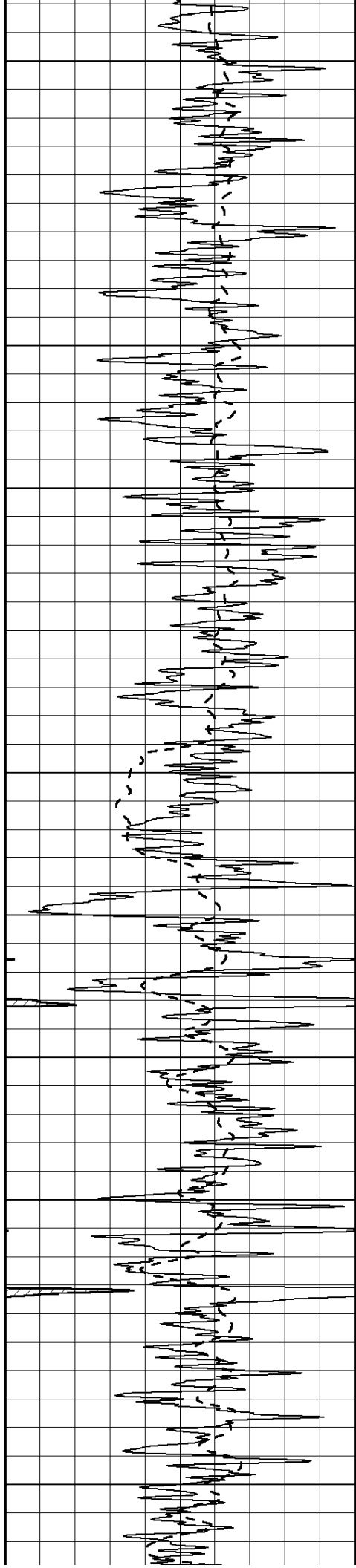
2500

2550

2600

2650





2700

2750

2800

2850

2900

2950

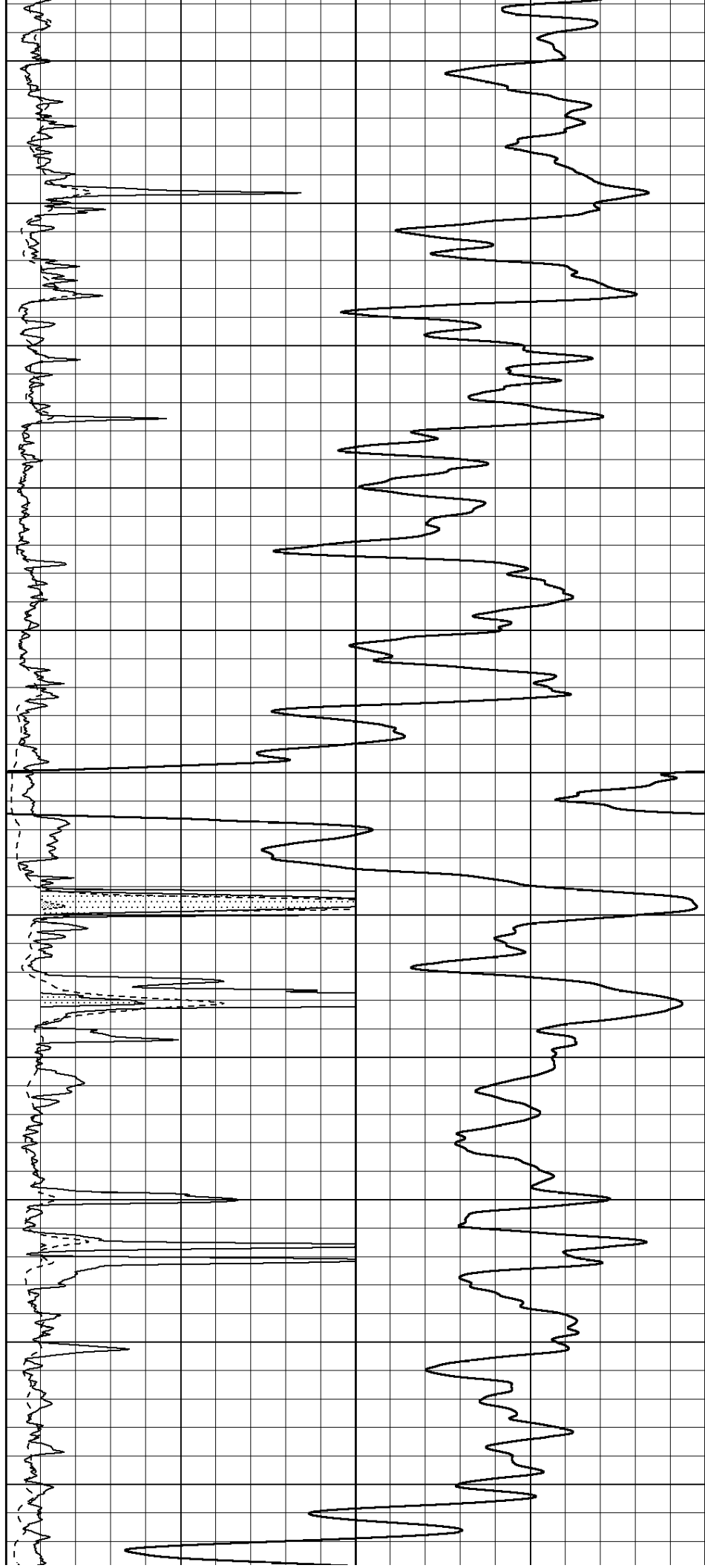
3000

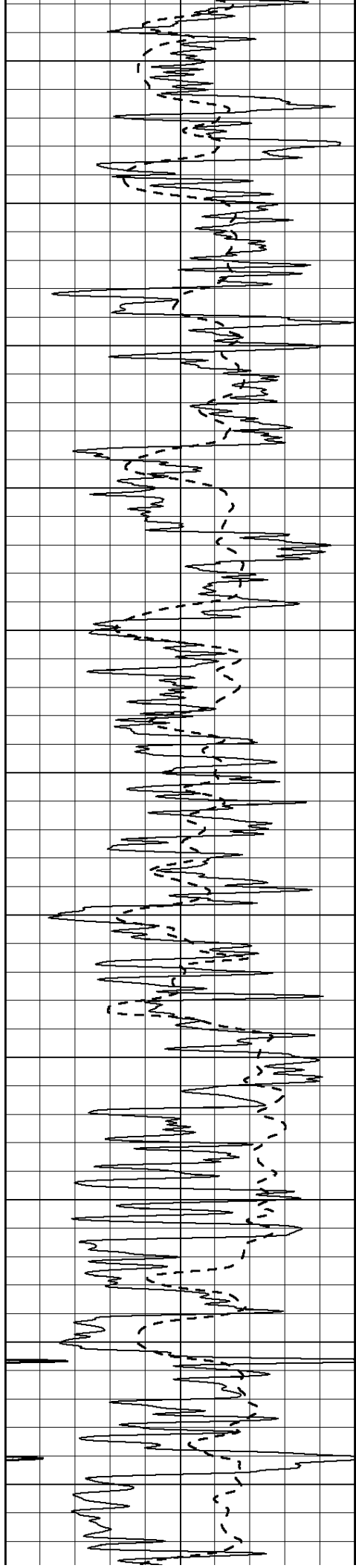
3050

3100

3150

3200





3250

3300

3350

3400

3450

3500

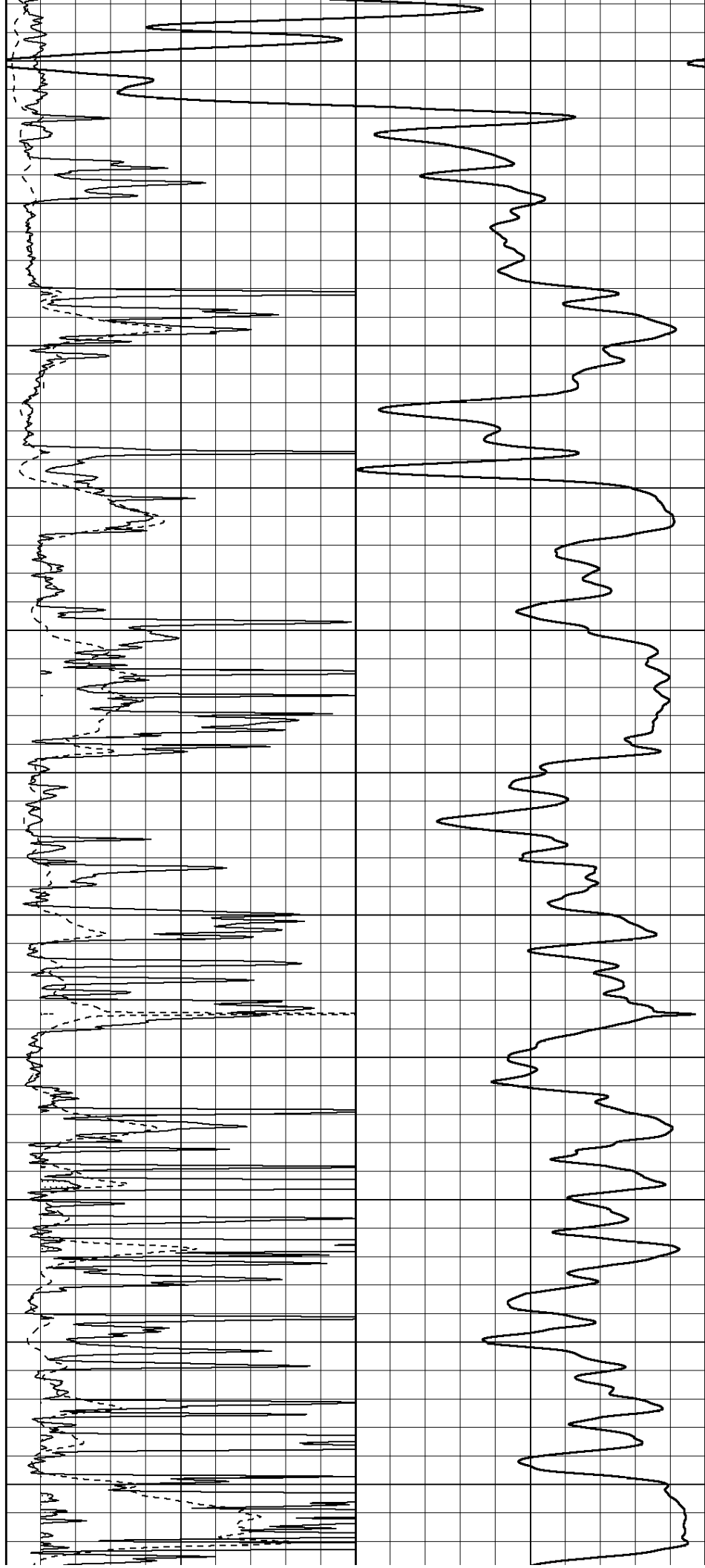
3550

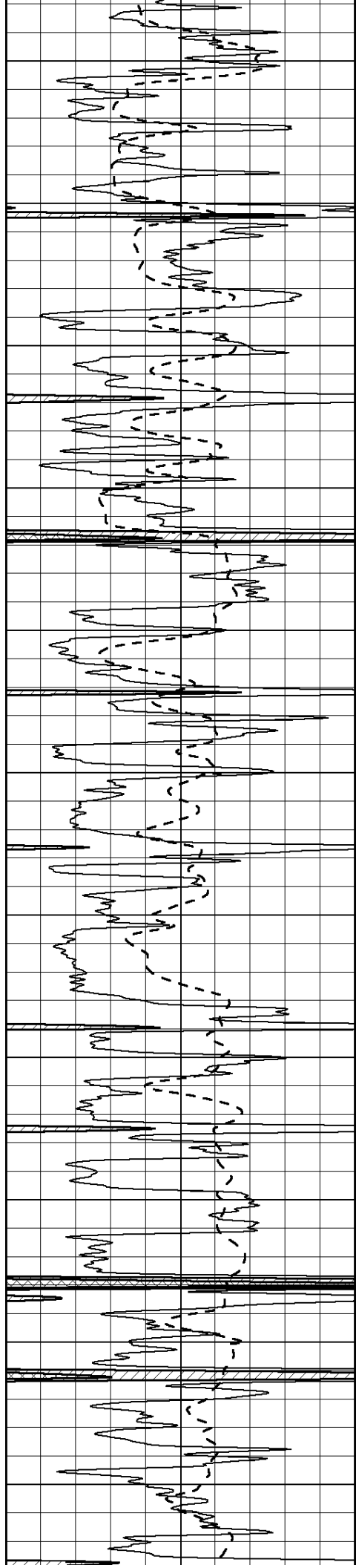
3600

3650

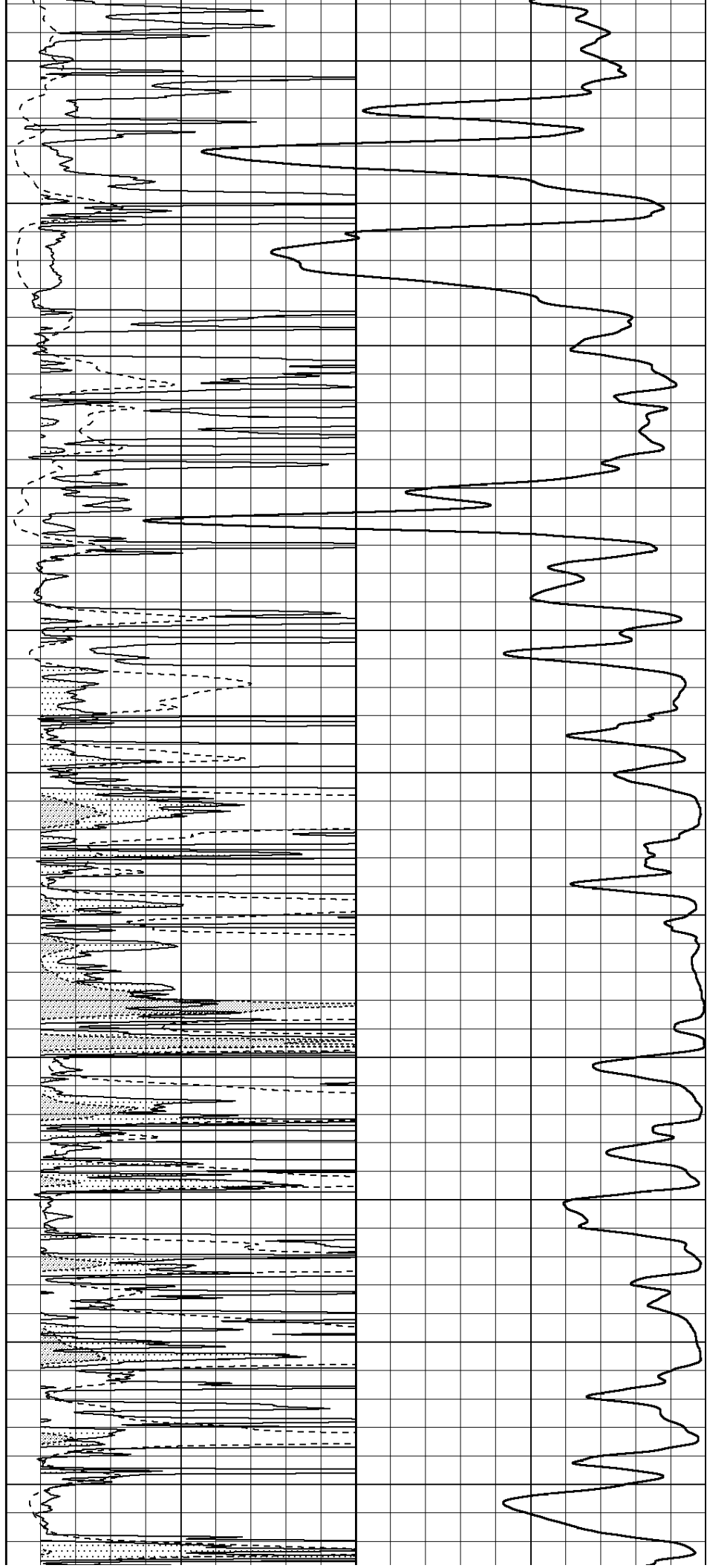
3700

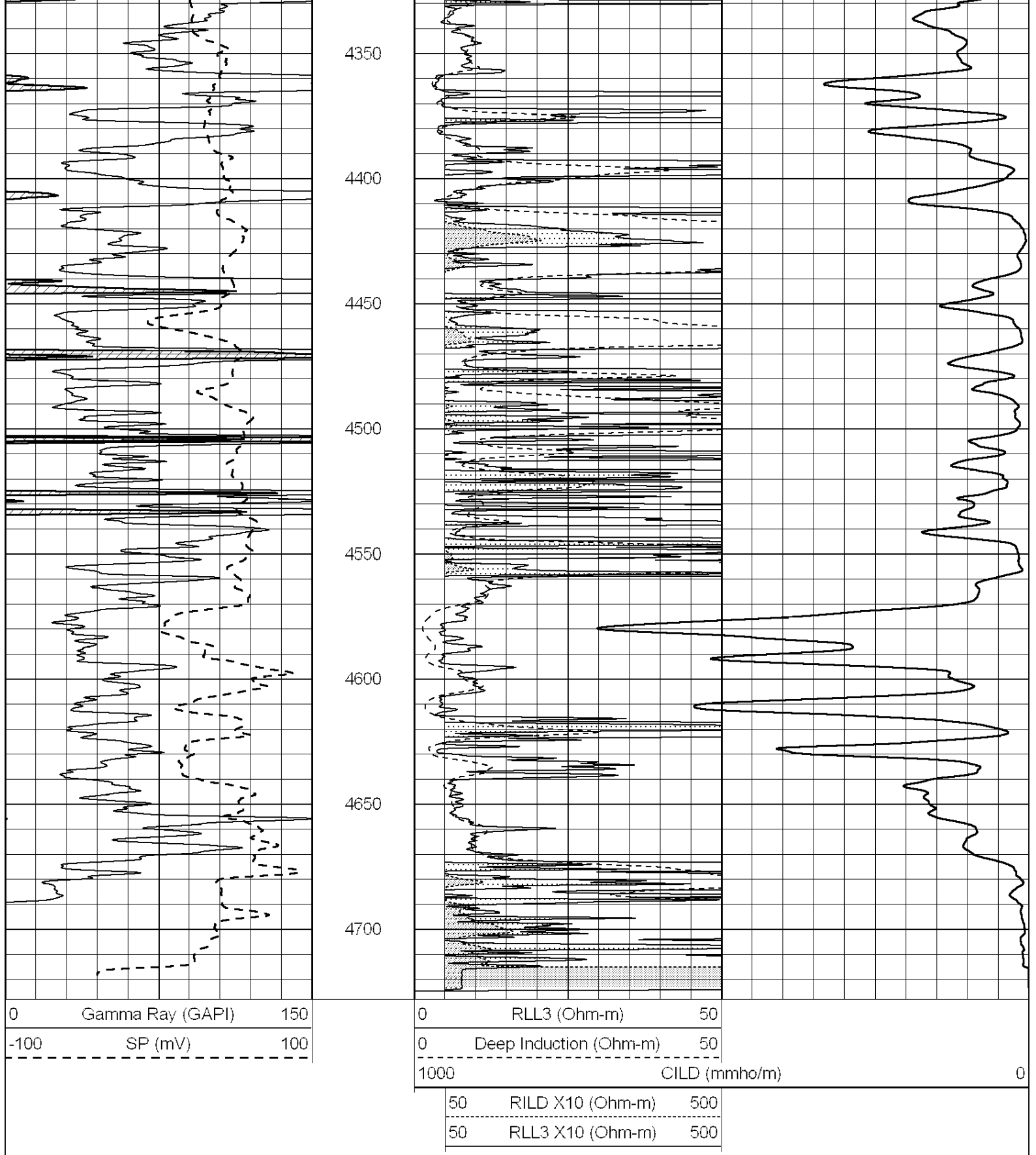
3750





3800
3850
3900
3950
4000
4050
4100
4150
4200
4250
4300



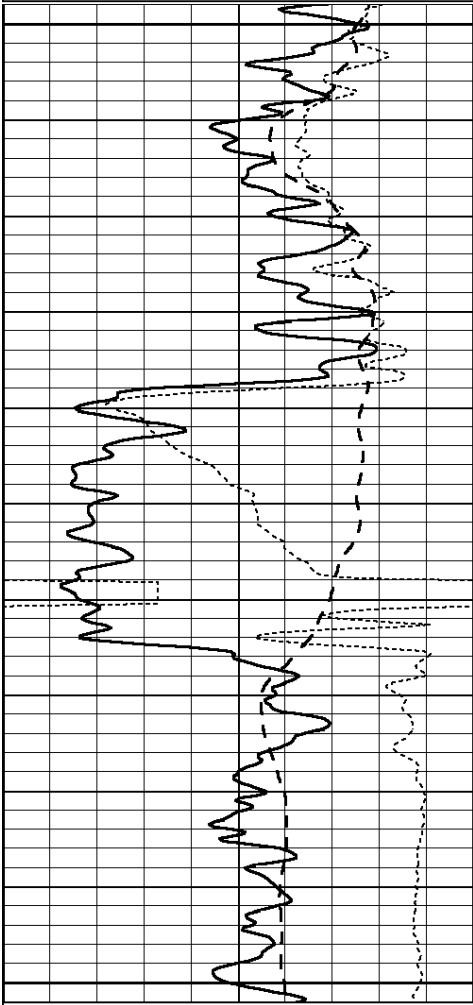


Database File: 006795ddn.db
 Dataset Pathname: pass5.6
 Presentation Format: _dil
 Dataset Creation: Mon Mar 28 23:18:41 2011
 Charted by: Depth in Feet scaled 1:240

0	GAMMA RAY (GAPI)	150	0.2	SHALLOW GUARD (Ohm-m)	2000
-100	SP (mV)	100	0.2	MEDIUM INDUCTION (Ohm-m)	2000

-250 Rxo/Rt 50

0.2 DEEP INDUCTION (Ohm-m) 2000

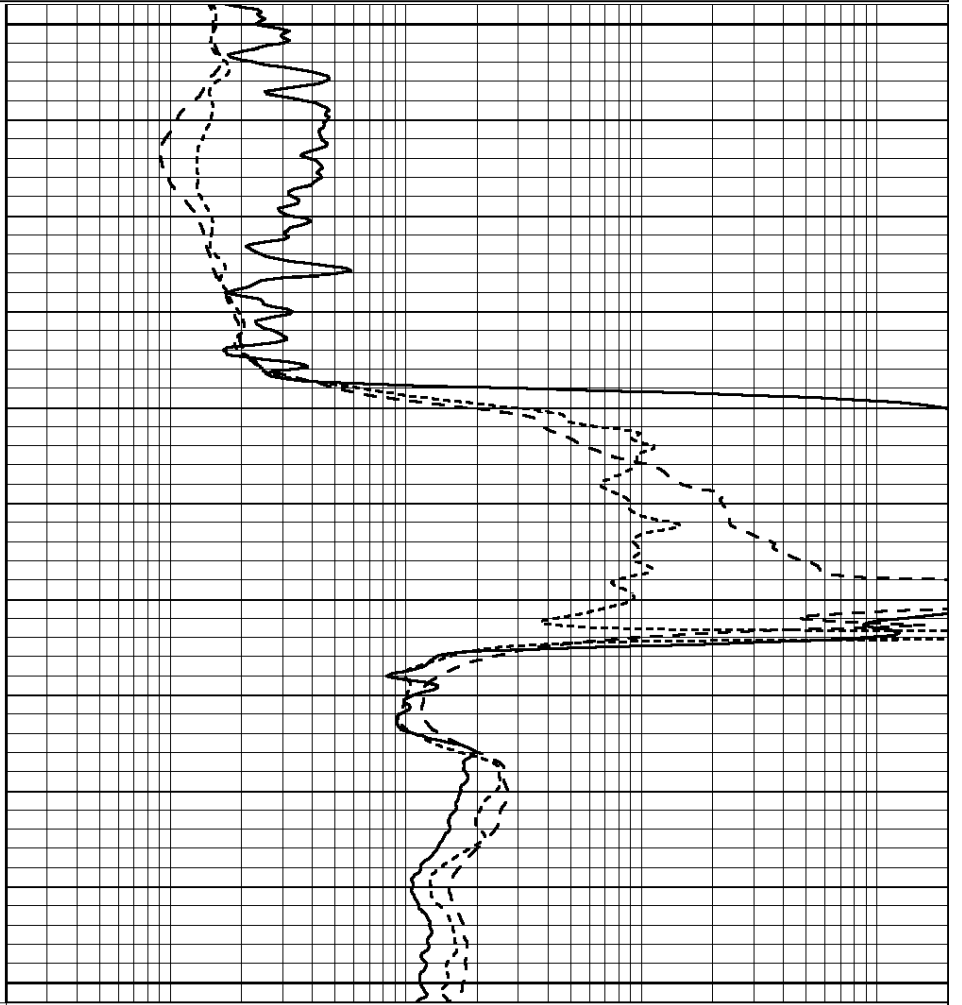


2500

2550

2600

0	GAMMA RAY (GAPI)	150
-100	SP (mV)	100
-250	Rxo/Rt	50

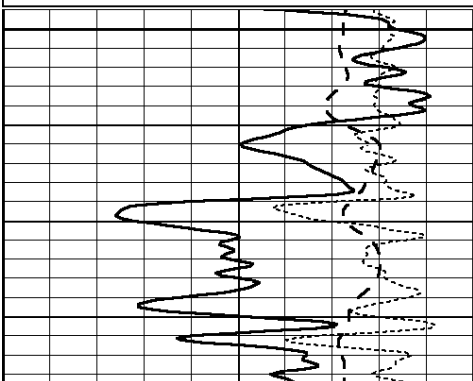


0.2	SHALLOW GUARD (Ohm-m)	2000
0.2	MEDIUM INDUCTION (Ohm-m)	2000
0.2	DEEP INDUCTION (Ohm-m)	2000

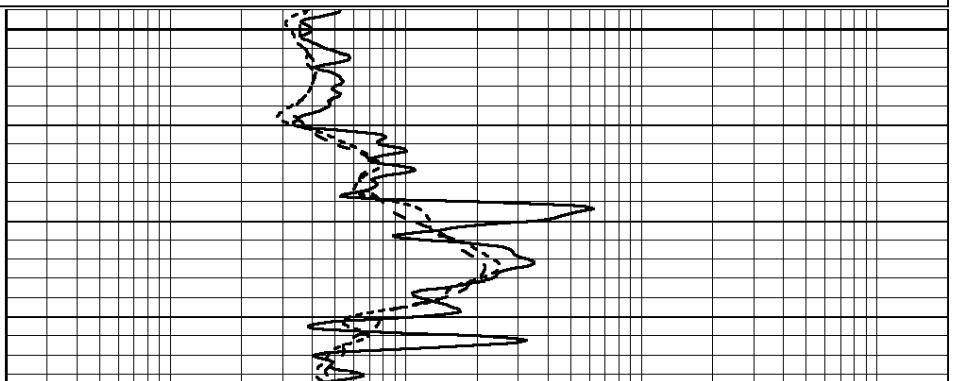
Database File: 006795ddn.db
 Dataset Pathname: pass5.4
 Presentation Format: _dil
 Dataset Creation: Mon Mar 28 21:34:59 2011
 Charted by: Depth in Feet scaled 1:240

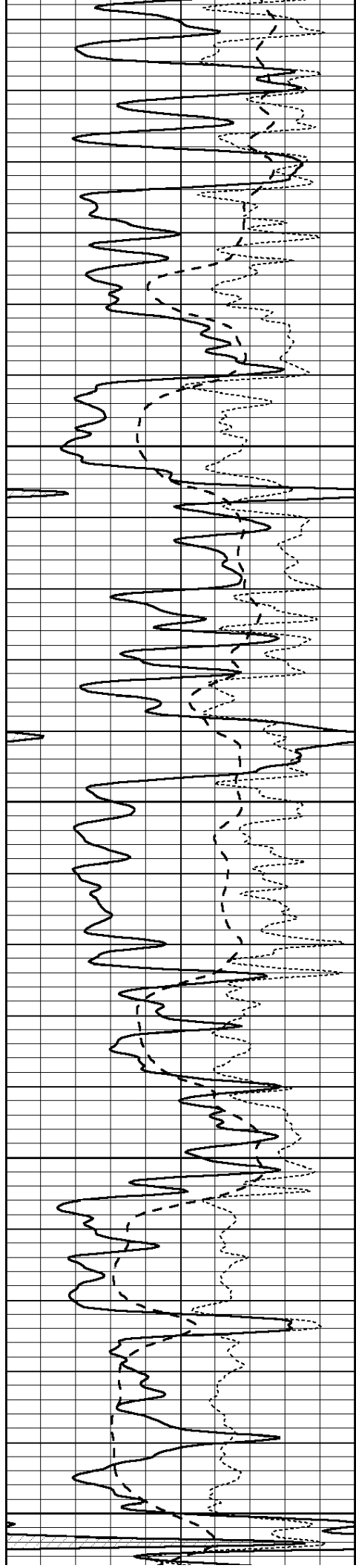
0	GAMMA RAY (GAPI)	150
-100	SP (mV)	100
-250	Rxo/Rt	50

0.2	SHALLOW GUARD (Ohm-m)	2000
0.2	MEDIUM INDUCTION (Ohm-m)	2000
0.2	DEEP INDUCTION (Ohm-m)	2000



3600





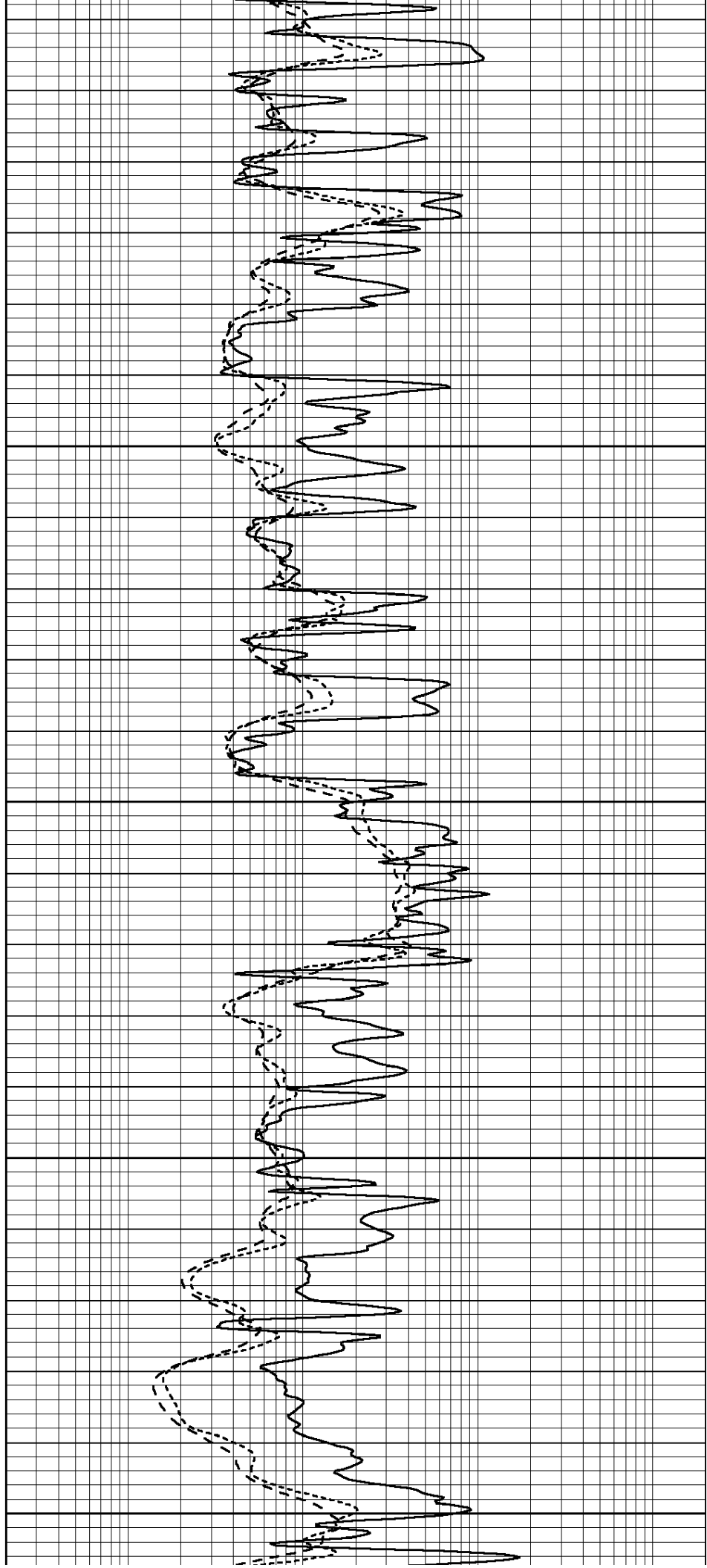
3650

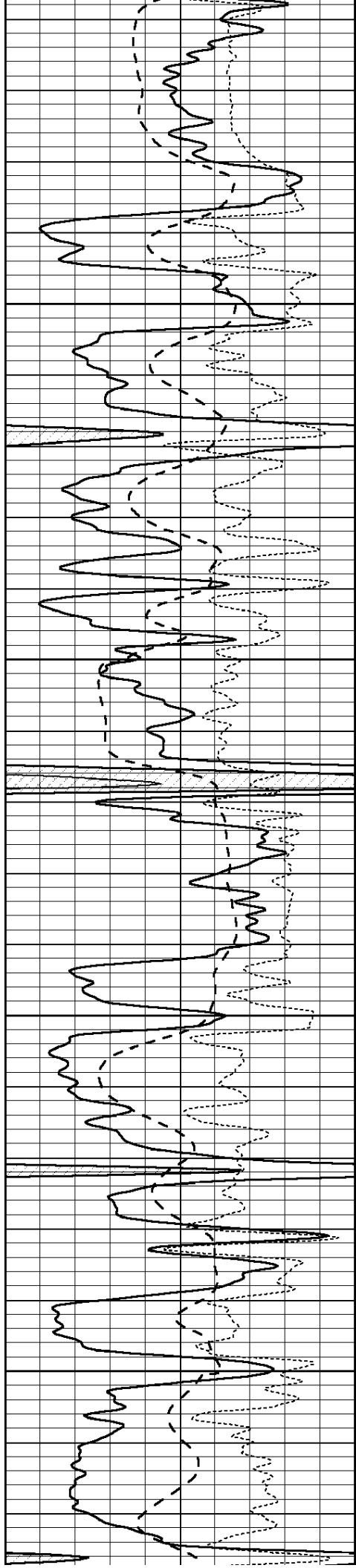
3700

3750

3800

3850



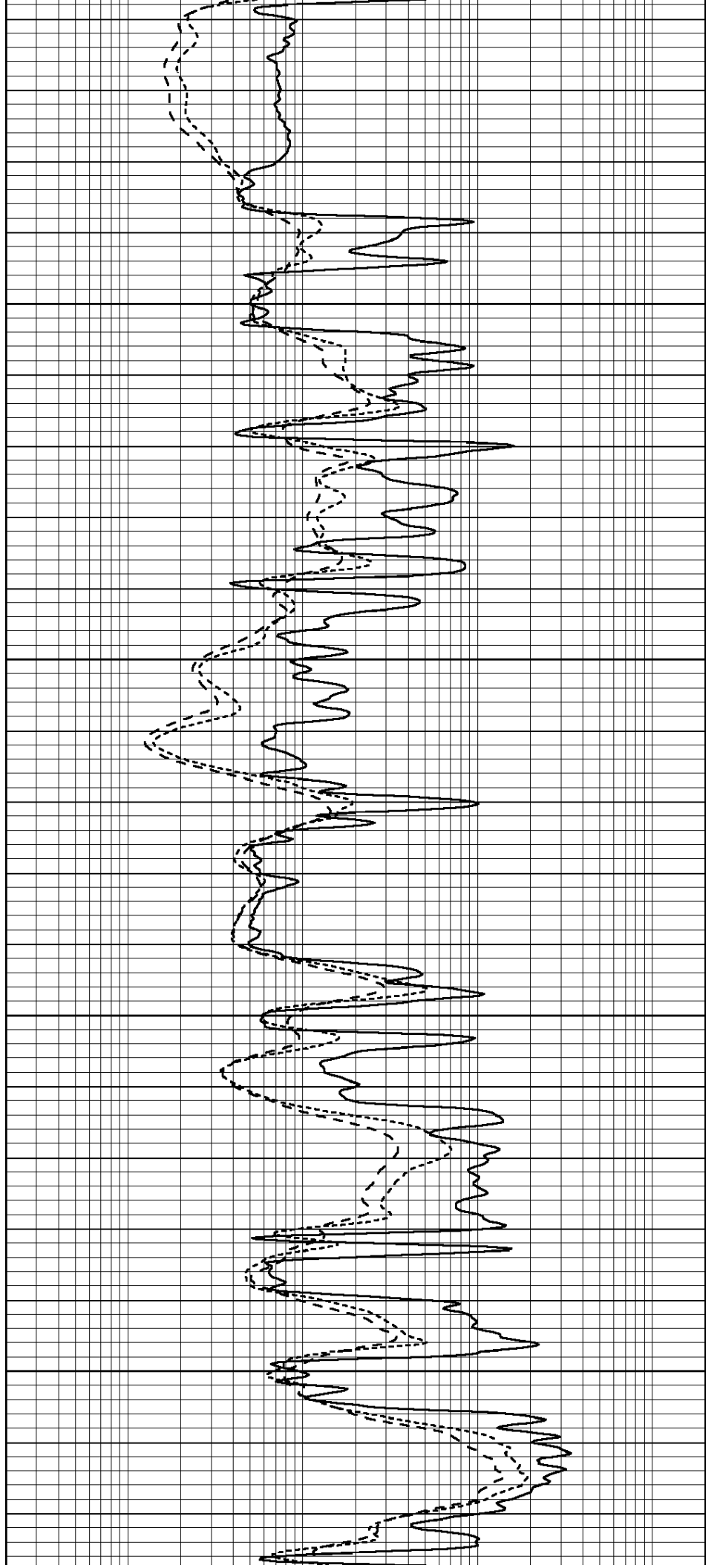


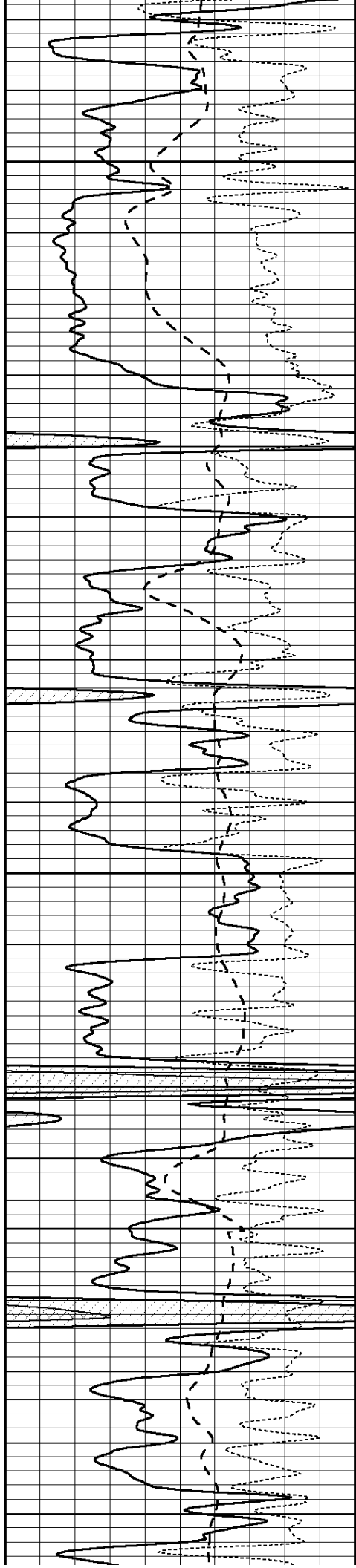
3900

3950

4000

4050



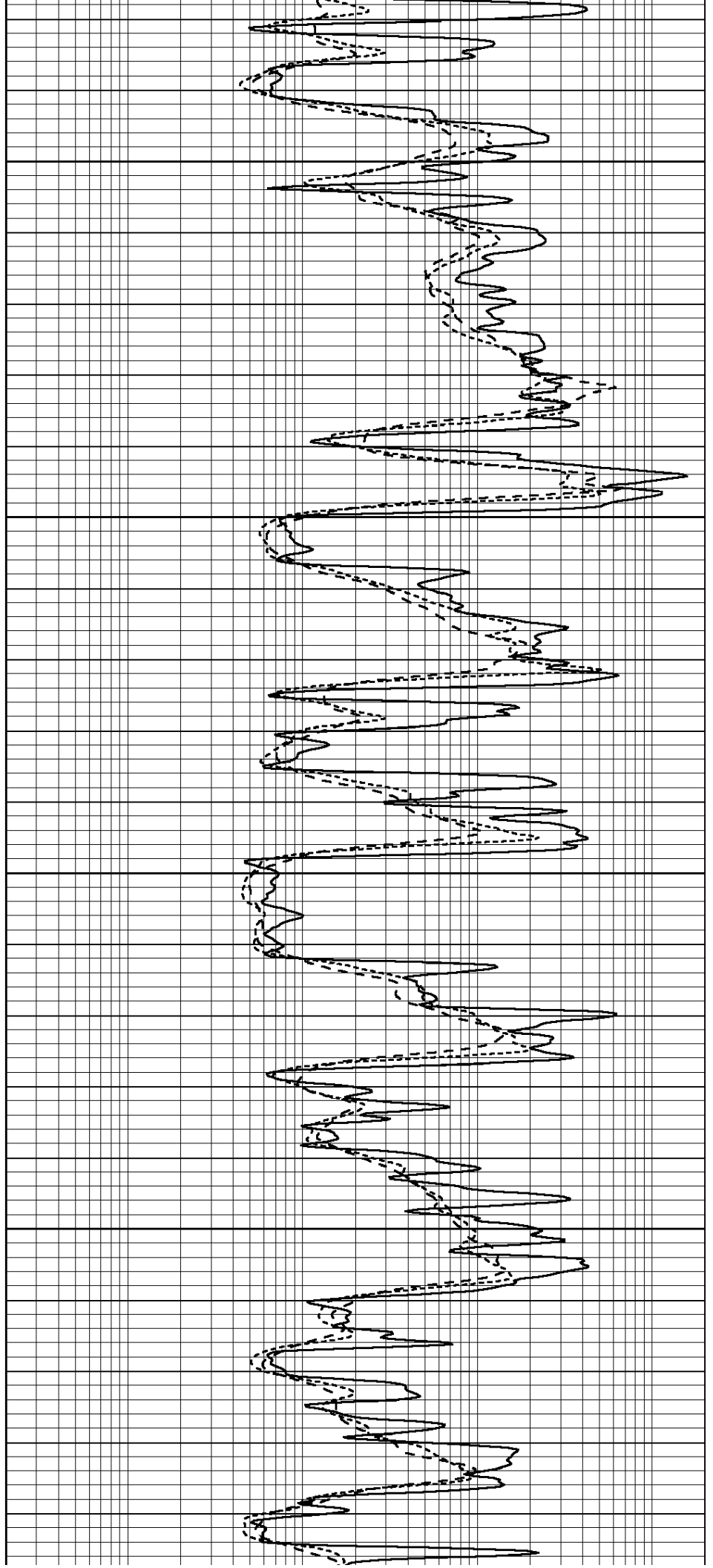


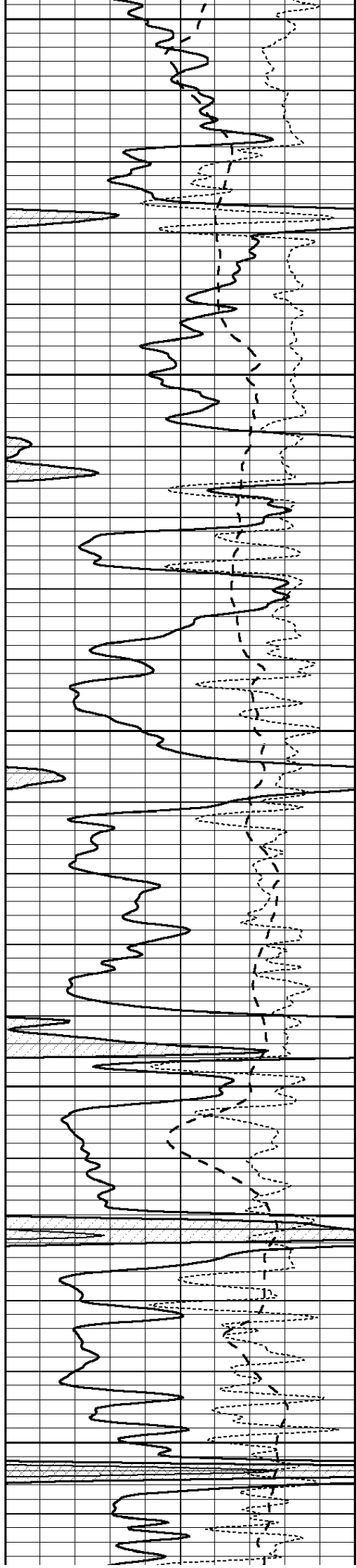
4100

4150

4200

4250





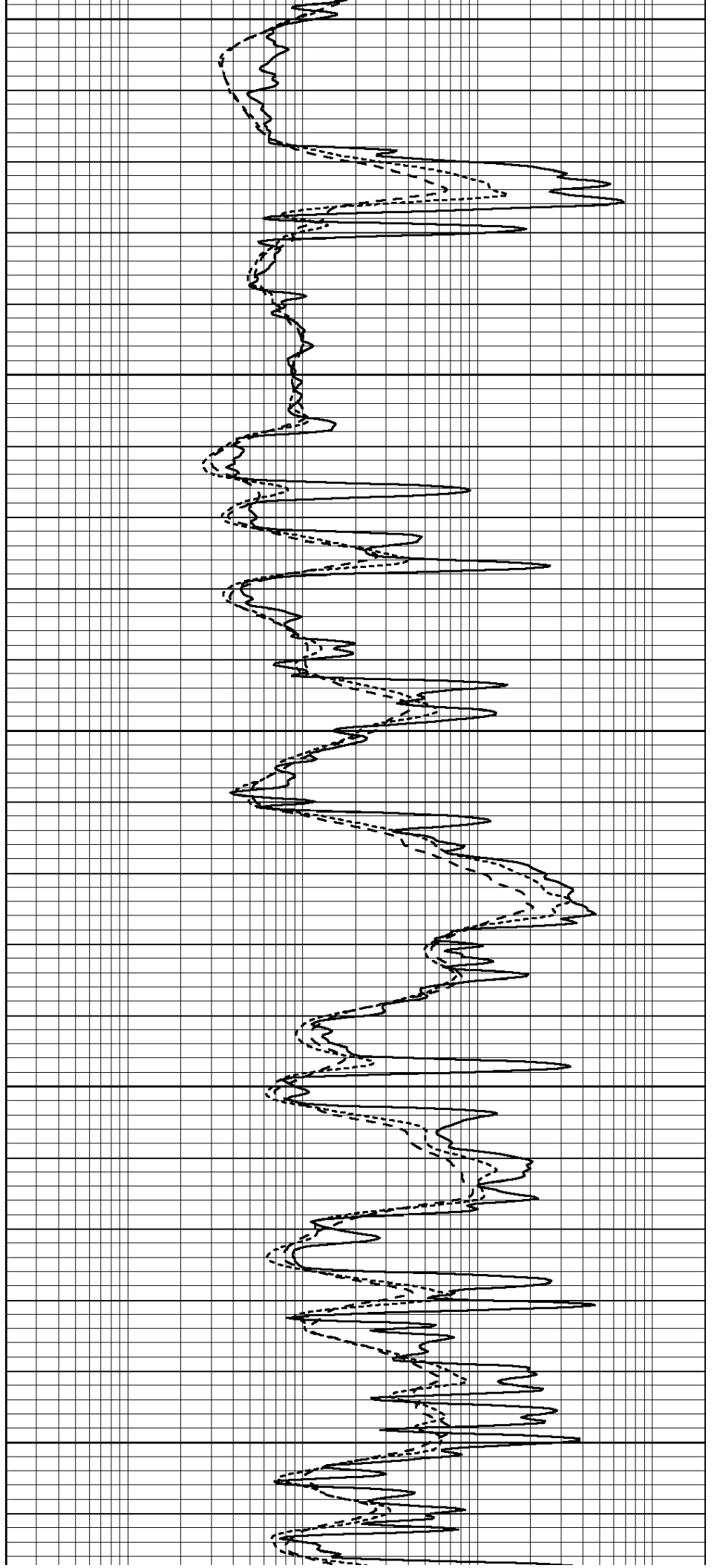
4300

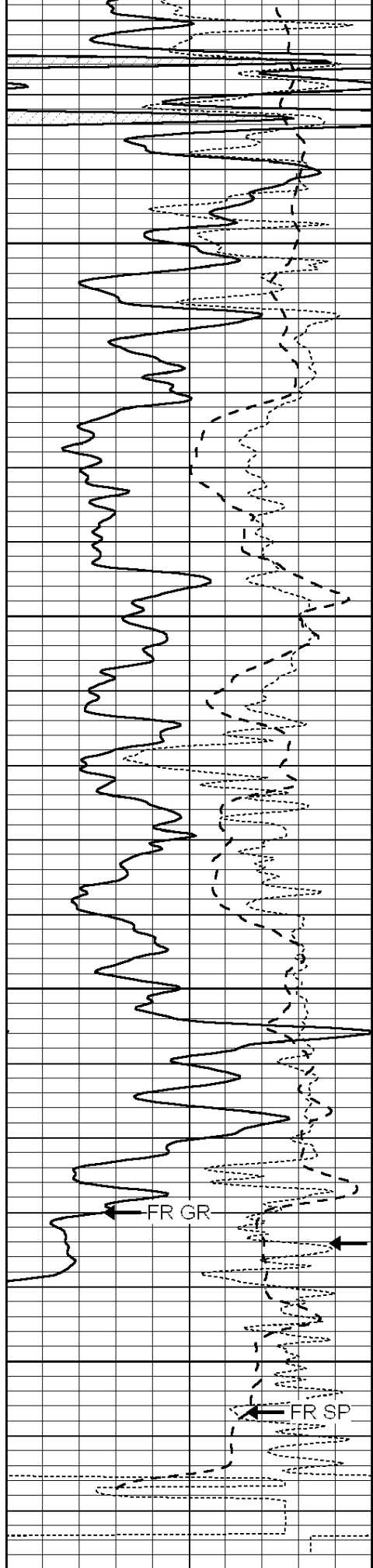
4350

4400

4450

4500





4550

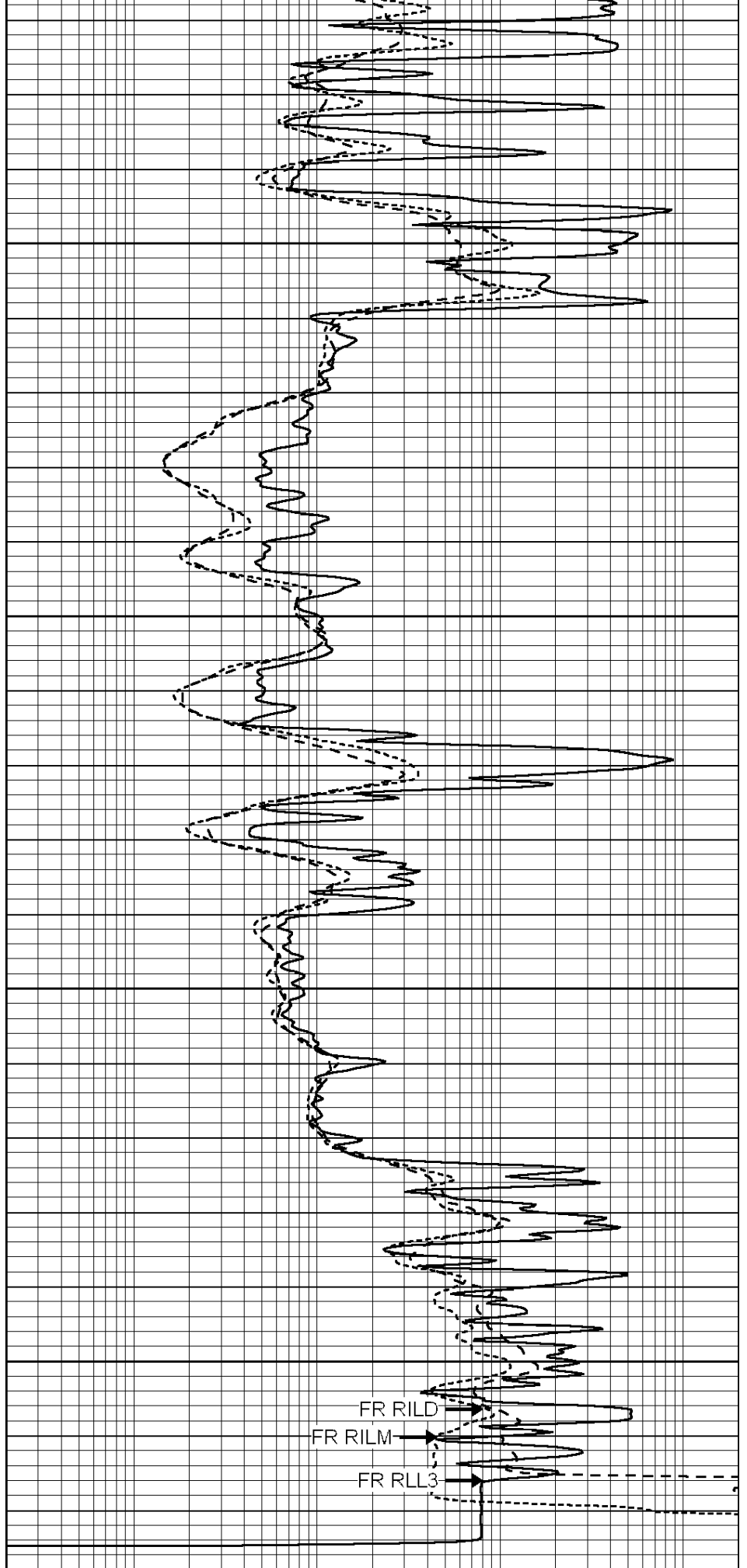
4600

4650

4700

LTD 4718

0 GAMMA RAY (GAPI) 150
 -100 SP (mV) 100



0.2 SHALLOW GUARD (Ohm-m) 2000
 0.2 MEDIUM INDUCTION (Ohm-m) 2000



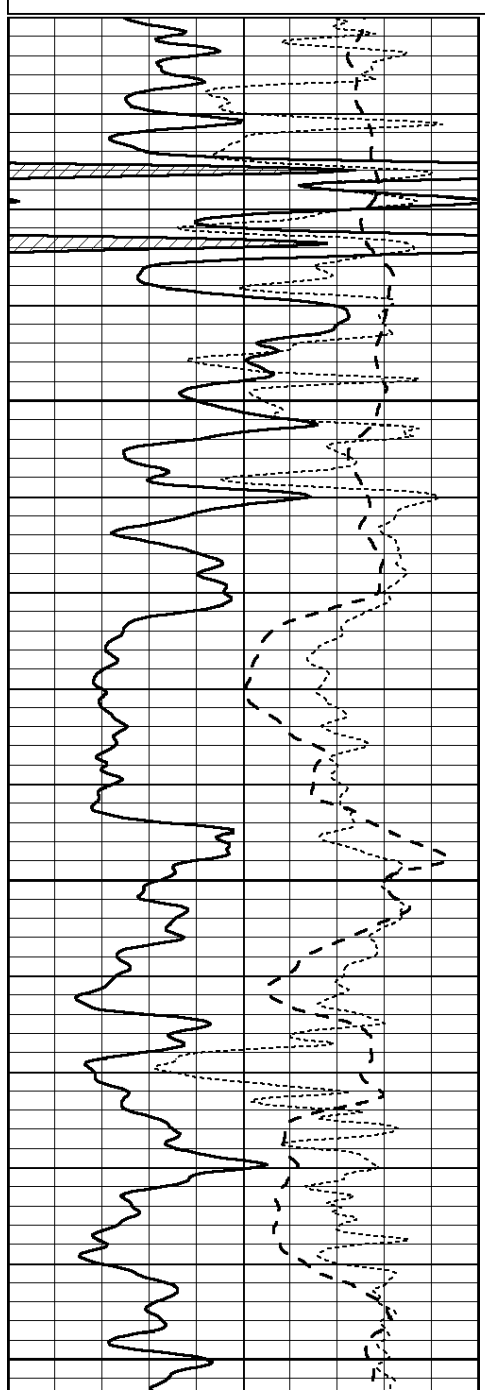
SUPERIOR
Hays,
Kansas

REPEAT SECTION

Database File: 006795ddn.db
Dataset Pathname: pass3.4
Presentation Format: _dil
Dataset Creation: Mon Mar 28 23:14:18 2011
Charted by: Depth in Feet scaled 1:240

0	GAMMA RAY (GAPI)	150
-100	SP (mV)	100
-250	Rxo/Rt	50

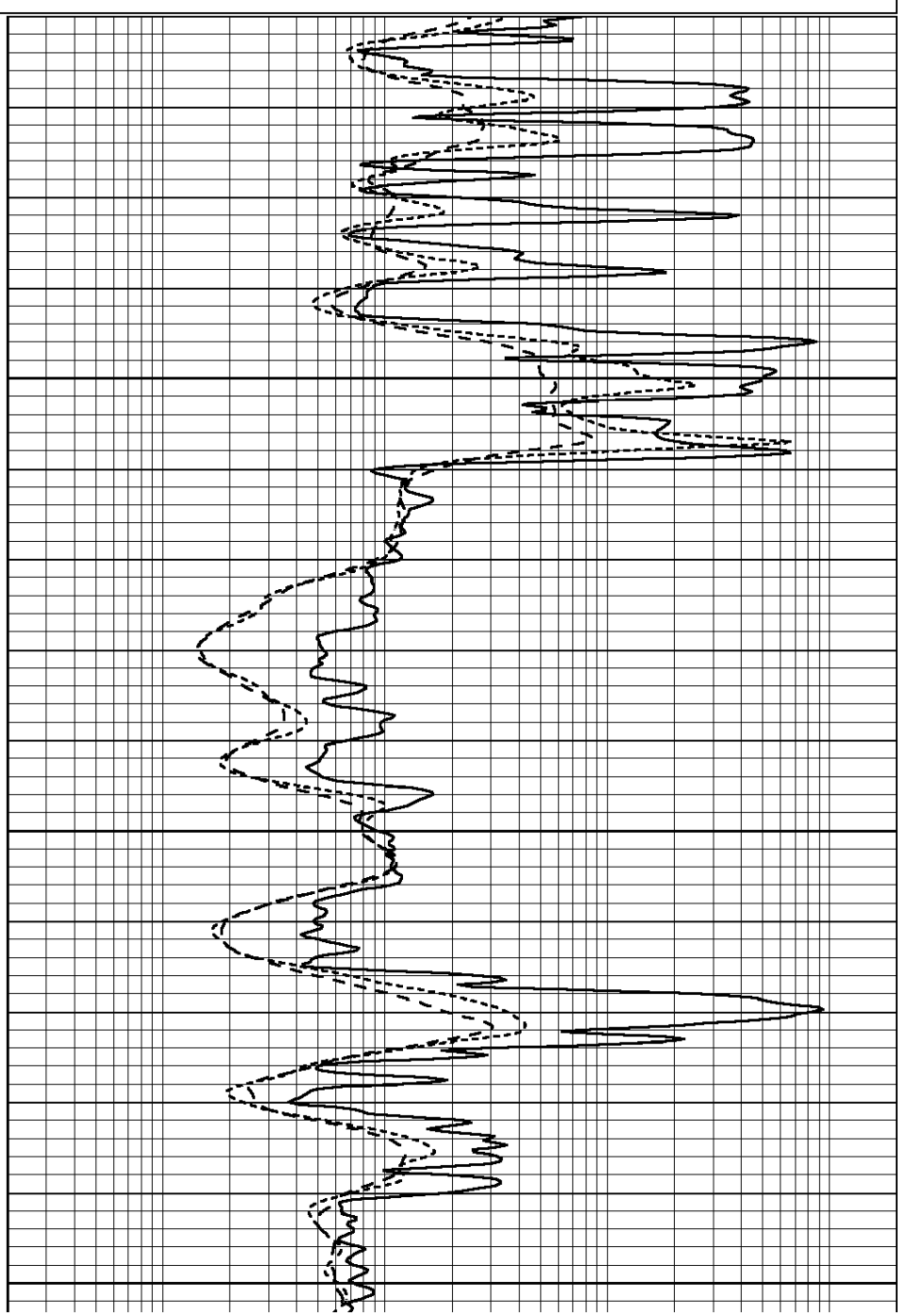
0.2	SHALLOW GUARD (Ohm-m)	2000
0.2	MEDIUM INDUCTION (Ohm-m)	2000
0.2	DEEP INDUCTION (Ohm-m)	2000

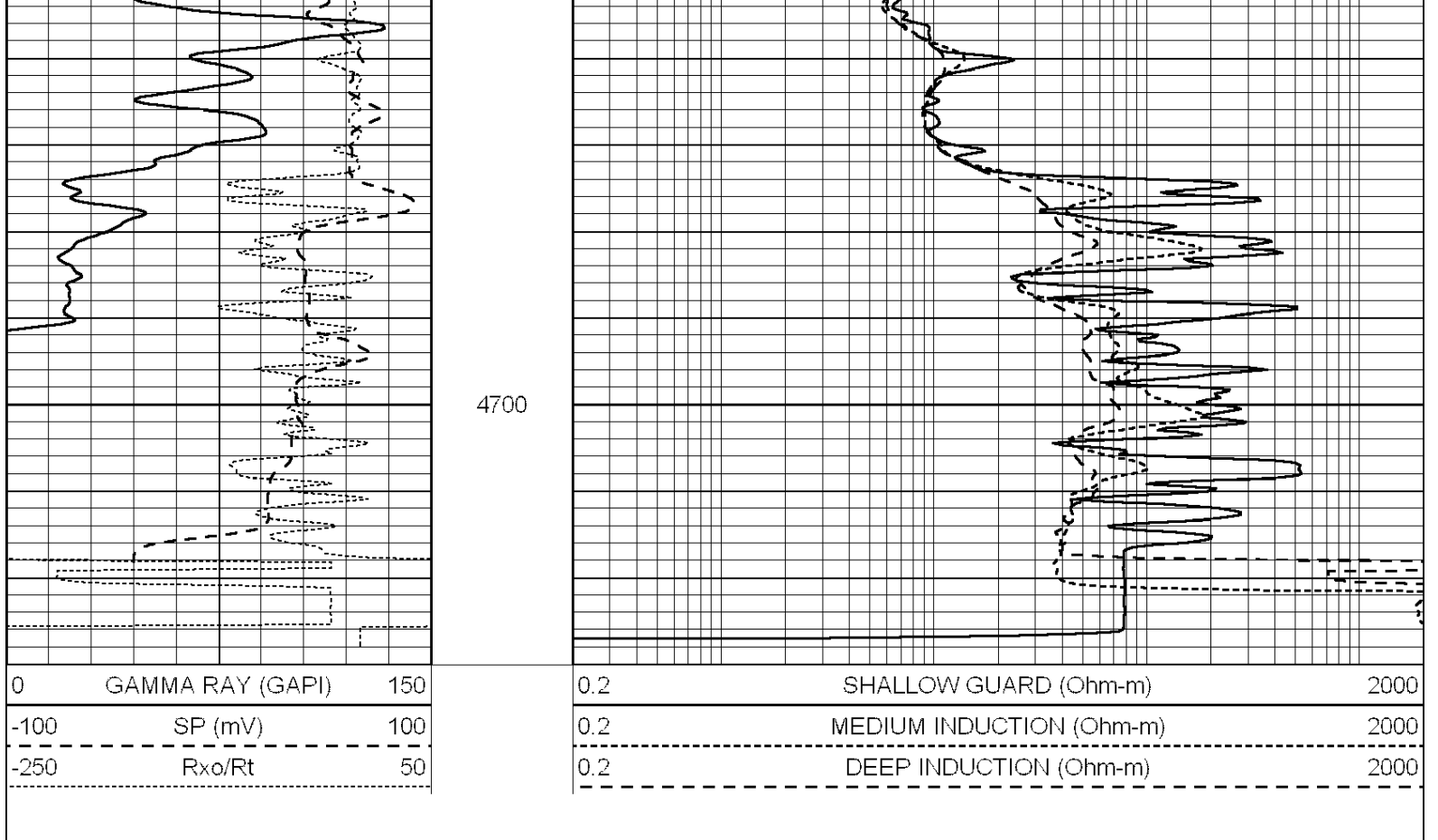


4550

4600

4650





Calibration Report

Database File: 006795ddn.db
 Dataset Pathname: pass5.6
 Dataset Creation: Mon Mar 28 23:18:41 2011

Dual Induction Calibration Report

Serial-Model: DIL4-GEAR
 Performed: Tue Mar 01 11:19:26 2011

Loop:	Readings				References			Results	
	Air	Loop			Air	Loop		m	b
Deep	0.008	0.666	V	0.000	400.000	mmho/m	470.000	-6.000	
Medium	-0.003	0.769	V	0.000	462.500	mmho/m	460.000	-3.000	
Internal:	Zero	Cal		Zero	Cal		m	b	
Deep	0.013	0.651	V	0.000	400.000	mmho/m	627.541	-8.365	
Medium	0.020	0.754	V	0.000	462.500	mmho/m	630.311	-12.549	

Compensated Density Calibration Report

Serial-Model: GEAR4-GEARHART
 Source / Verifier: 143 / 143
 Master Calibration Performed: Wed Jan 26 17:58:17 2011

Master Calibration

	Density		Far Detector	Near Detector	
Magnesium	1.710	g/cc	1015.91	497.51	cps
Aluminum	2.580	g/cc	227.67	350.20	cps

Spine Angle = 76.79

Density/Spine Ratio = 0.566

	Size		Reading	
Small Ring	8.20	in	2.50	V
Large Ring	14.00	in	4.70	V

Compensated Neutron Calibration Report

Serial Number:	6I
Tool Model:	G

CALIBRATION						
Detector	Readings		Target		Normalization	
Short Space	1.00	cps	1.00	cps	1.0000	
Long Space	1.00	cps	1.00	cps	1.0000	

Gamma Ray Calibration Report

Serial Number:	#8	
Tool Model:	OPEN	
Performed:	Fri Feb 18 03:07:29 2011	
Calibrator Value:	150.0	GAPI
Background Reading:	0.0	cps
Calibrator Reading:	175.0	cps
Sensitivity:	1.0071	GAPI/cps