



DIGITAL LOG (785) 625-3858

Dual Induction Log

API No.	15-009-25,537-00-00	
Company	L.D. Drilling, Inc.	
Well	Jack No. 2-6	
Field		
County	Barton	State Kansas
Location	1,650' FSL & 330' FWL	
Sec: 6	Twp: 18S	Rge: 11W
Other Services	CNL/CDL MEL/BHCS	

Permanent Datum	Ground Level	Elevation	1829
Log Measured From	Kelly Bushing	5	Ft. Above Perm. Datum
Drilling Measured From	Kelly Bushing		
Date	3/31/2011		
Run Number	One		
Depth Driller	3460		
Depth Logger	3459		
Bottom Logged Interval	3458		
Top Log Interval	300		
Casing Driller	8.625 @ 342		
Casing Logger	337		
Bit Size	7.875		
Type Fluid in Hole	Chemical		
Salinity, ppm CL	5000		
Density / Viscosity	9.3	56	
pH / Fluid Loss	10.0	8.8	
Source of Sample	Flowline		
Rm @ Meas. Temp	.50	@	51
Rmf @ Meas. Temp	.38	@	51
Rmc @ Meas. Temp	.68	@	51
Source of Rmf / Rmc	Charts		
Rm @ BHT	.23	@	111
Operating Rig Time	4 Hours		
Max Rec. Temp. F	111		
Equipment Number	10		
Location	Hays		
Recorded By	J. Long		
Witnessed By	Jim Musgrove		

<<< Fold Here >>>

All interpretations are opinions based on inferences from electrical or other measurements and we cannot and do not guarantee the accuracy or correctness of any interpretation, and we shall not, except in the case of gross or willful negligence on our part, be liable or responsible for any loss, costs, damages, or expenses incurred or sustained by anyone resulting from any interpretation made by any of our officers, agents or employees. These interpretations are also subject to our general terms and conditions set out in our current Price Schedule.

Comments

Thank you for using Log-Tech, Inc.
(785) 625-3858

Claflin, 3 West to NE 100 Rd, 3/4 South, East Into

Database File: c:\warrior\data\ld drilling_jack no. 2-6\ld_jack_2-6hd.db
 Dataset Pathname: dil\dstmlsn
 Presentation Format: dil2in
 Dataset Creation: Thu Mar 31 12:09:07 2011
 Charted by: Depth in Feet scaled 1:600

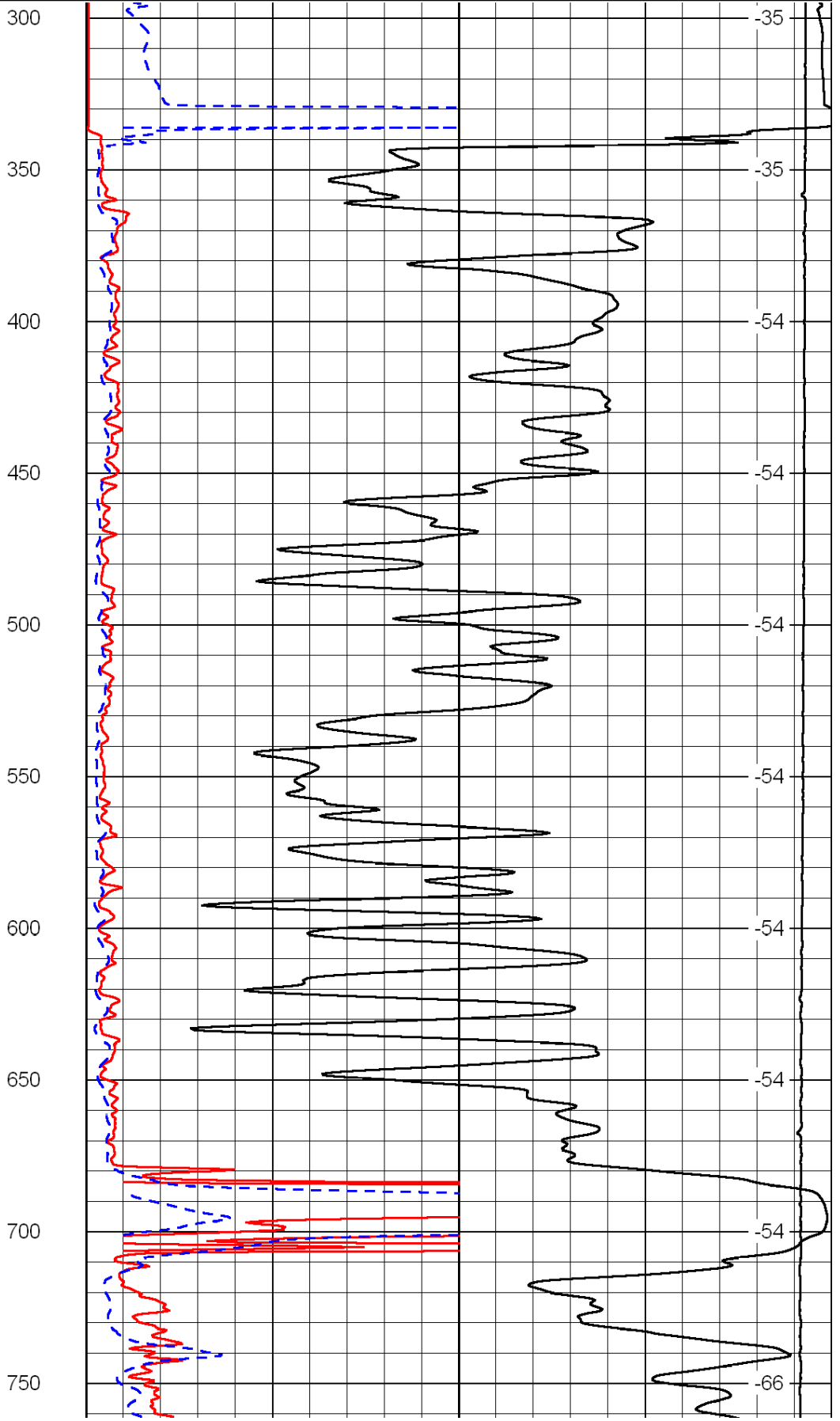
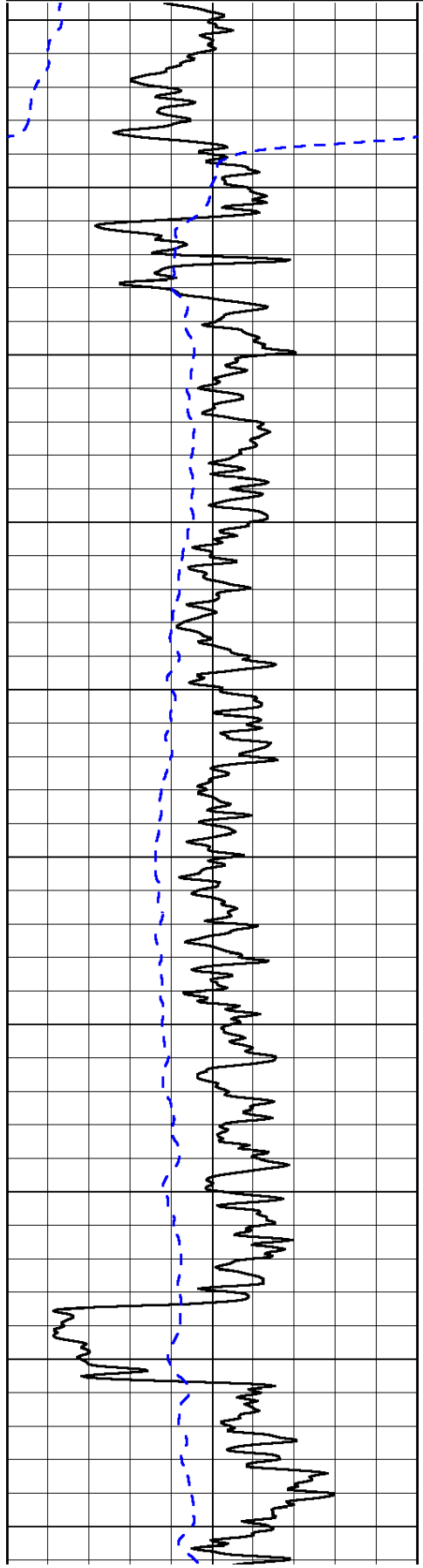
0	Gamma Ray	150
-200	SP (mV)	0

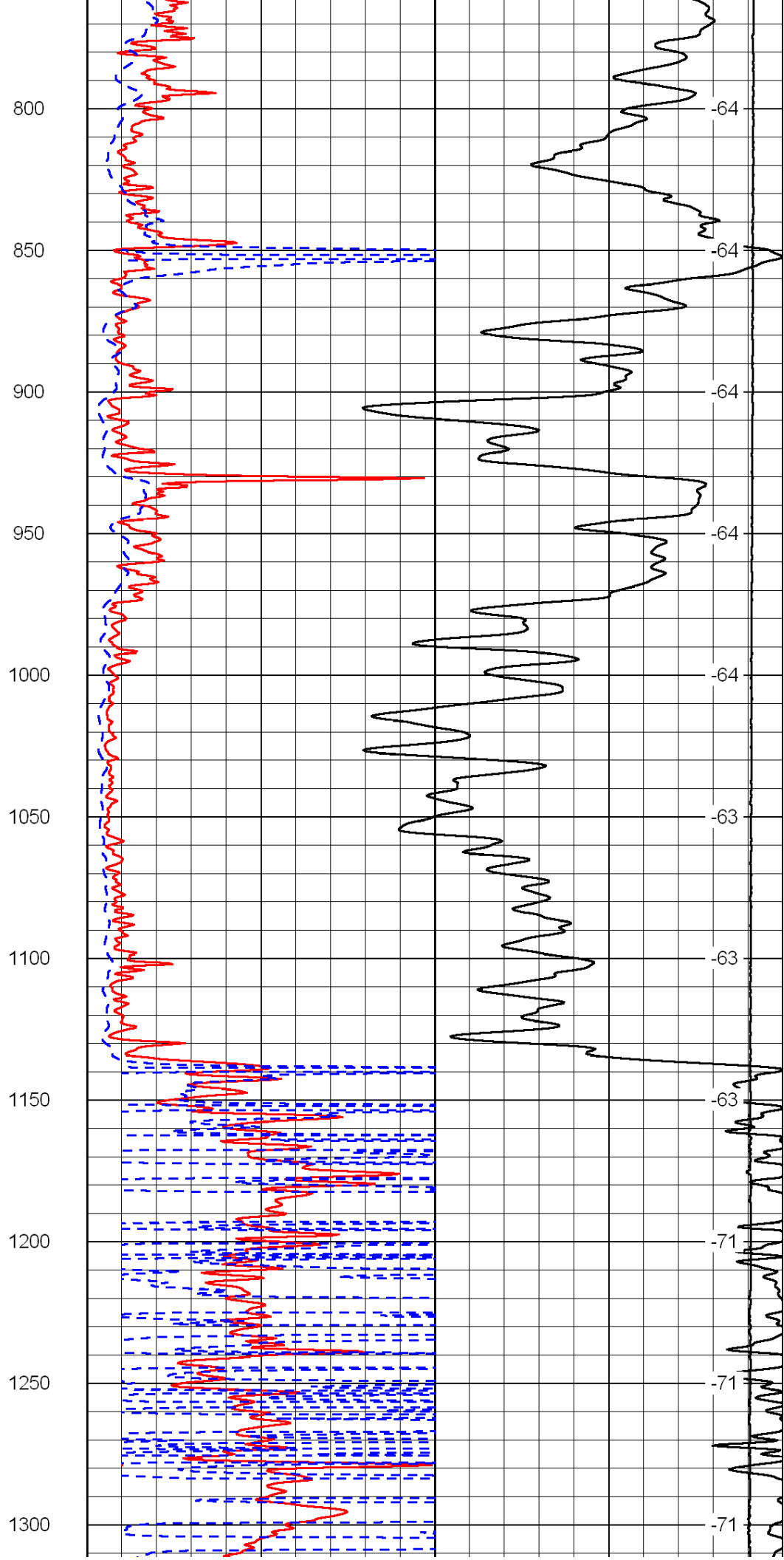
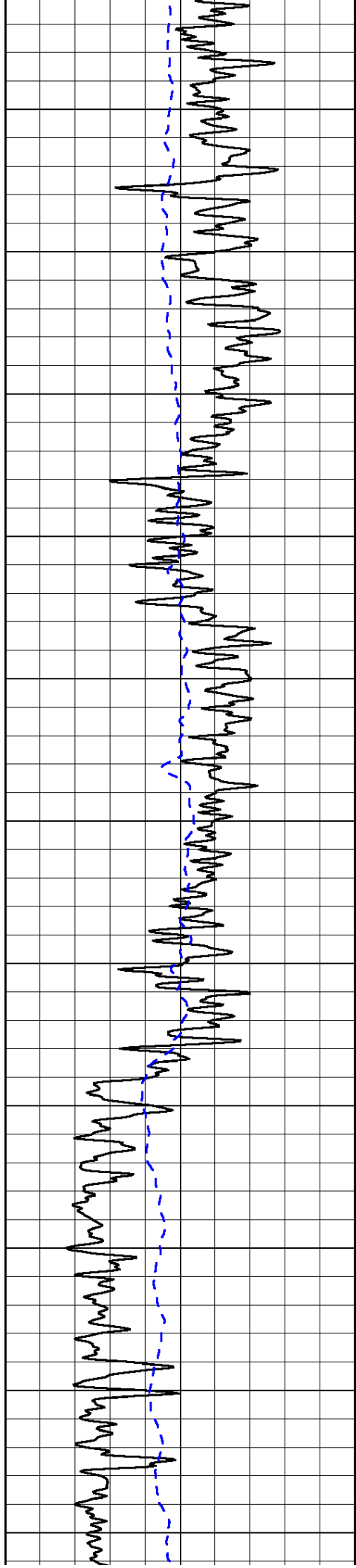
0	Shallow Resistivity	50
0	Deep Resistivity	50

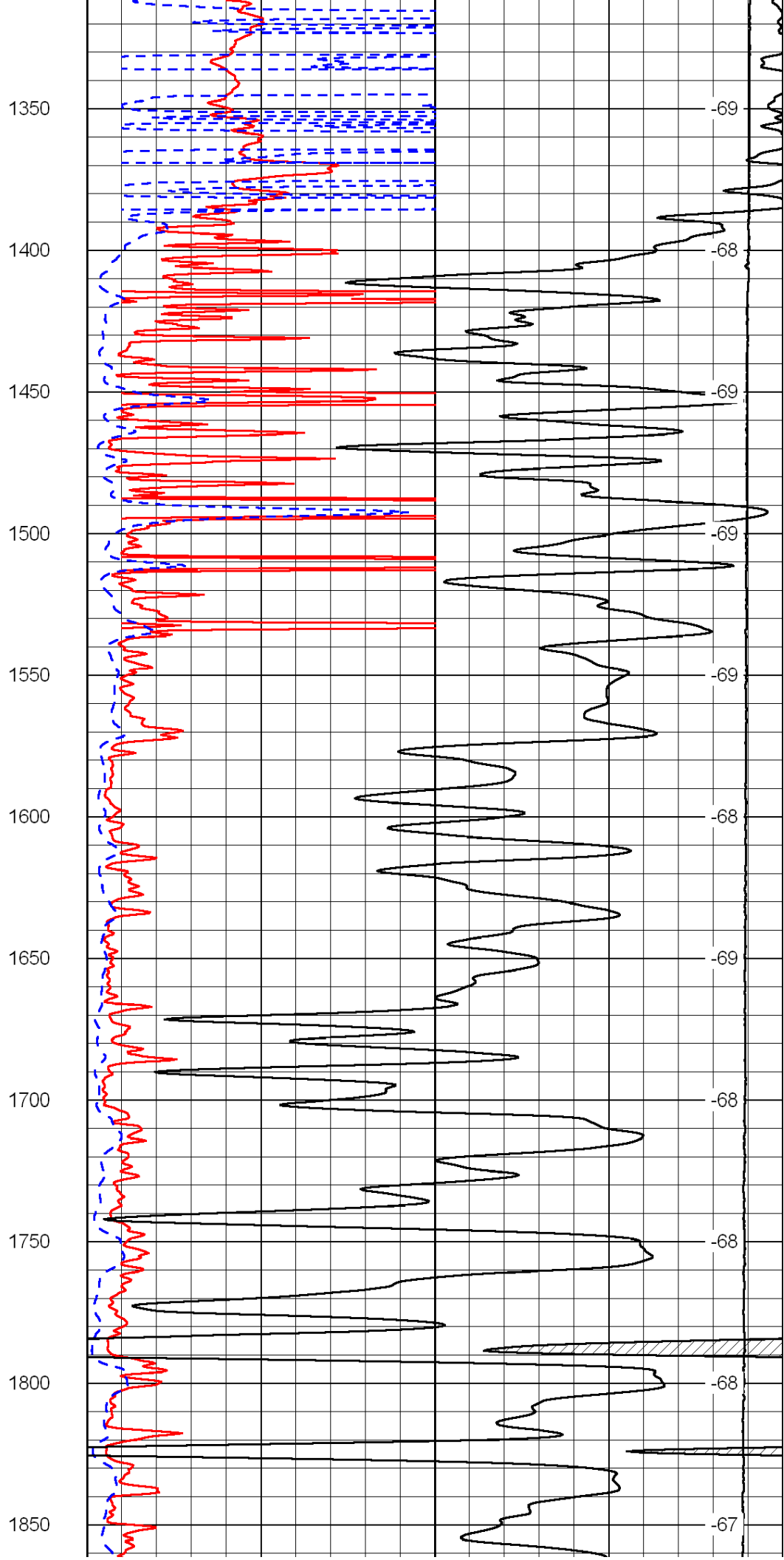
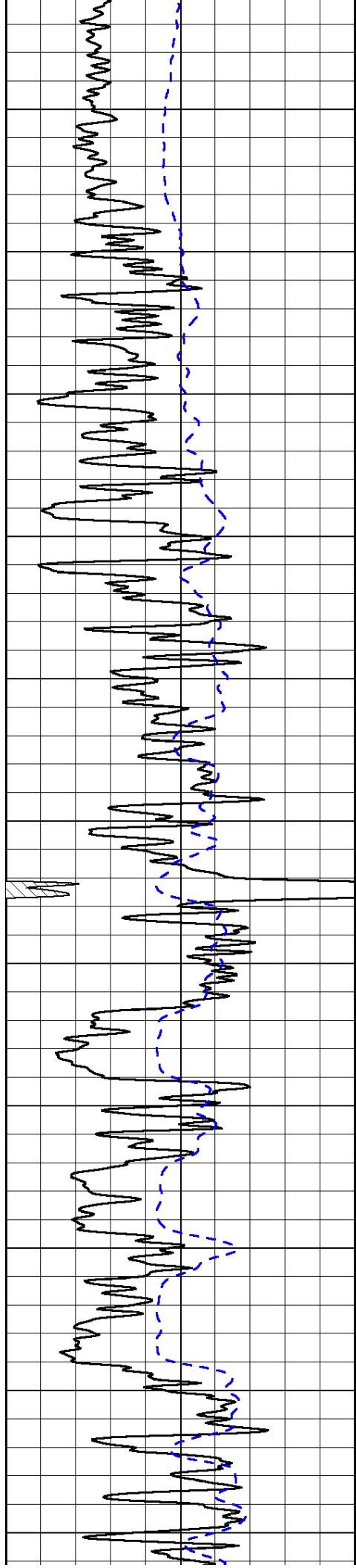
LSPD

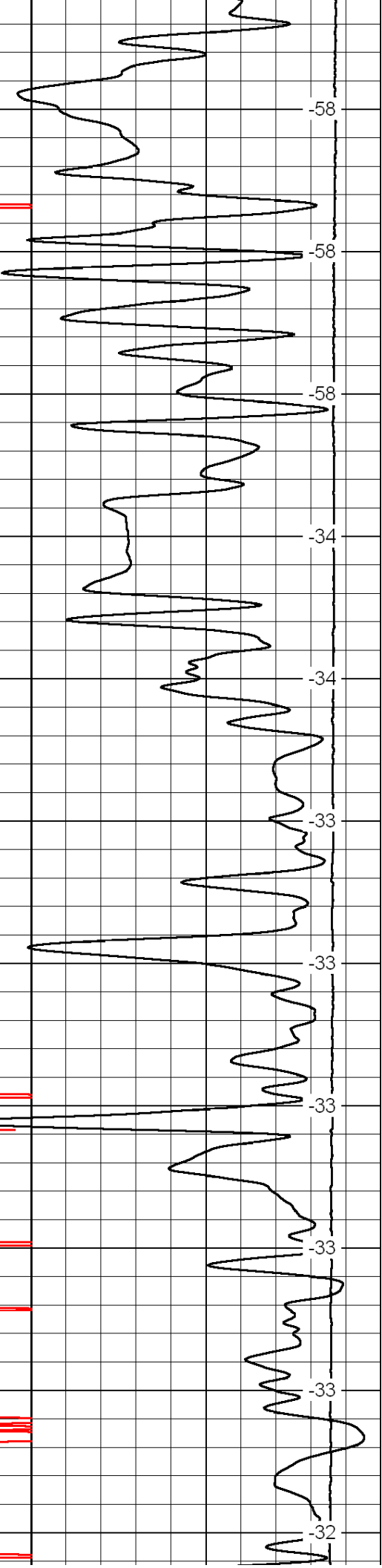
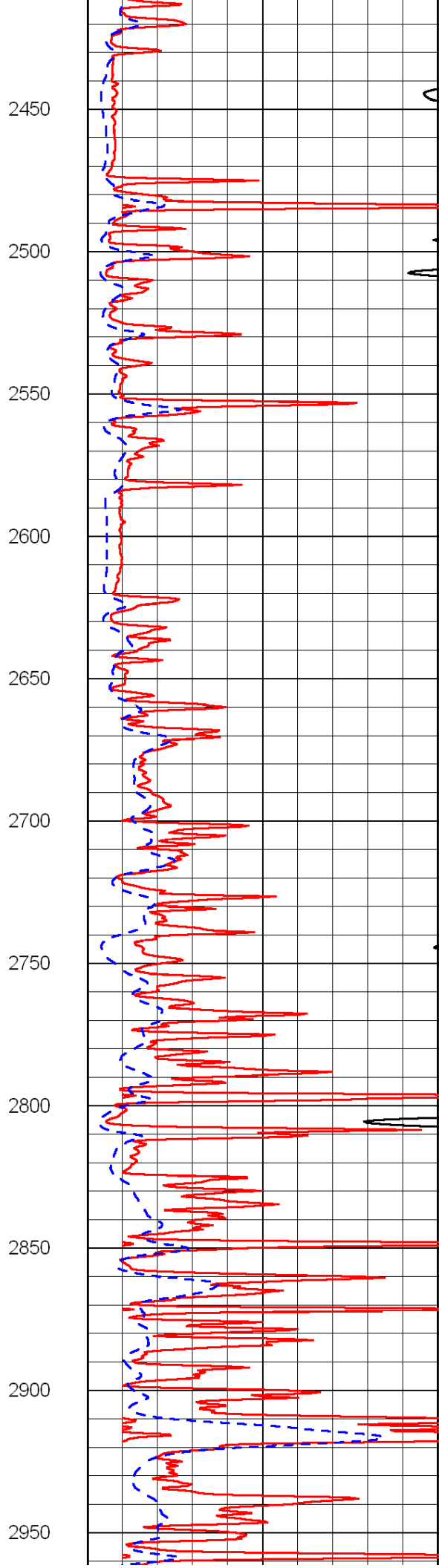
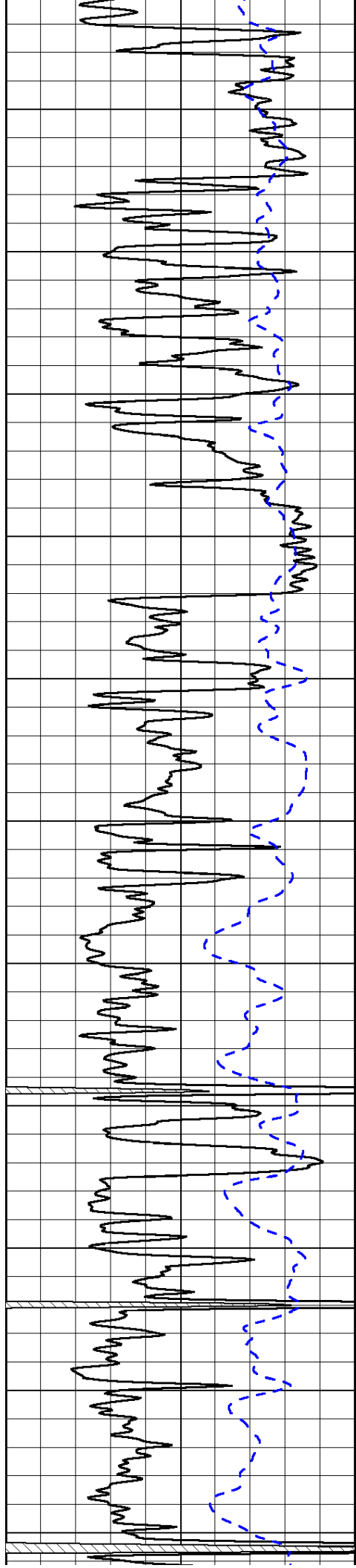
1000	Conductivity	0
15000	Line Tension	0

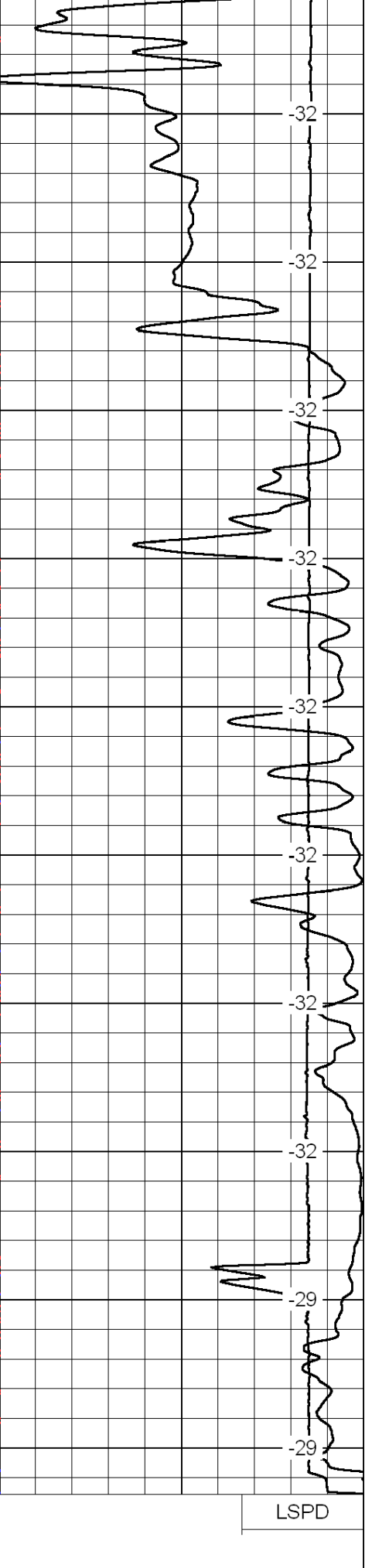
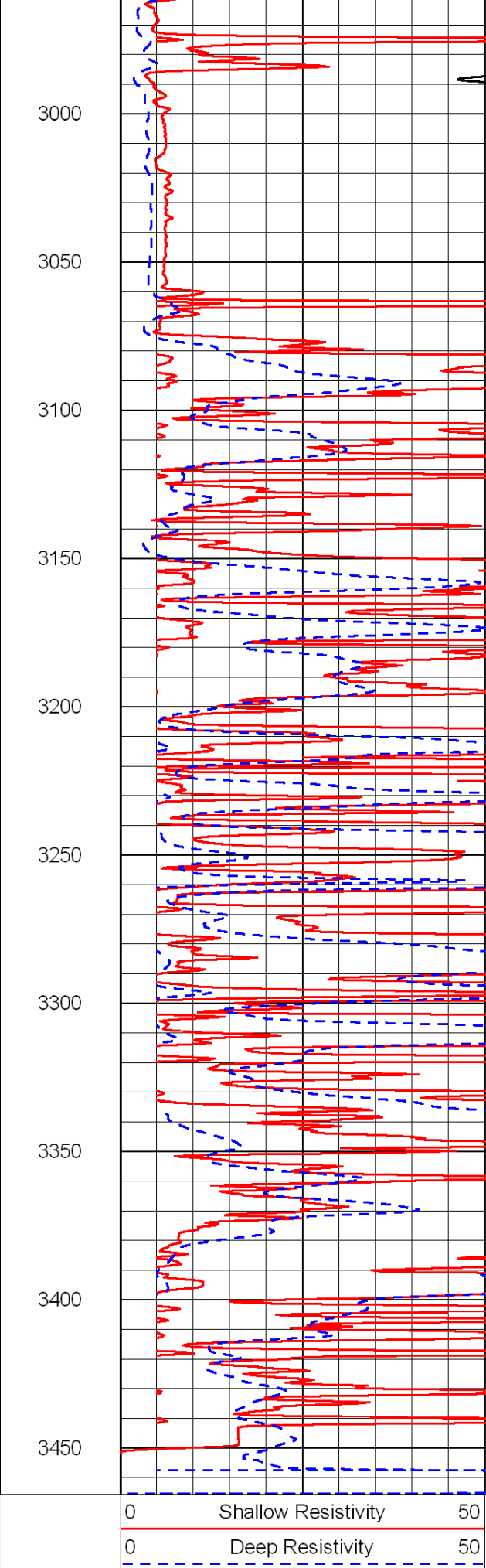
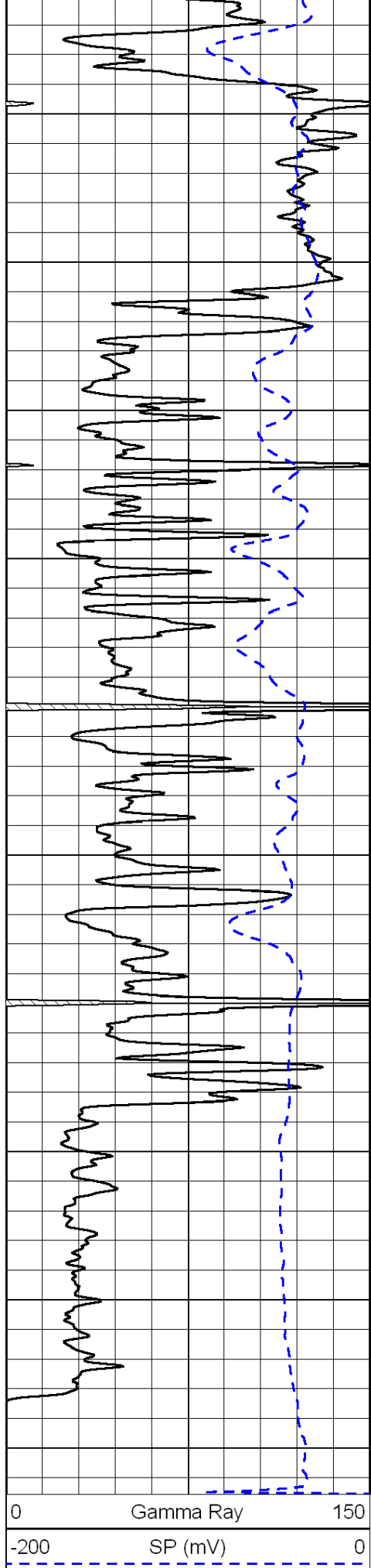
50	Shallow Resistivity	500
50	Deep Resistivity	500











0 Gamma Ray 150
 -200 SP (mV) 0

0 Shallow Resistivity 50
 0 Deep Resistivity 50

1000 Conductivity 0
 15000 Line Tension 0

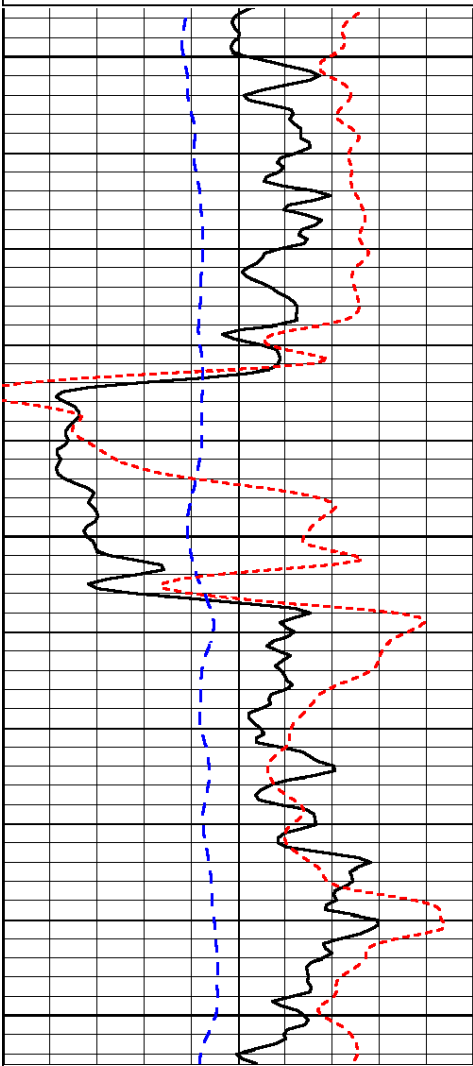
50	Shallow Resistivity	500
50	Deep Resistivity	500

Database File: c:\warrior\data\ld_drilling_jack no. 2-6\ld_jack_2-6hd.db
 Dataset Pathname: dil\ldstmlsn
 Presentation Format: dil
 Dataset Creation: Thu Mar 31 12:09:07 2011
 Charted by: Depth in Feet scaled 1:240

0	Gamma Ray	150
-200	SP (mV)	0
-160	Rxo / Rt	40

0.2	Deep Resistivity	2000
0.2	Medium Resistivity	2000
0.2	Shallow Resistivity	2000
15000	Line Tension	0

LSPD

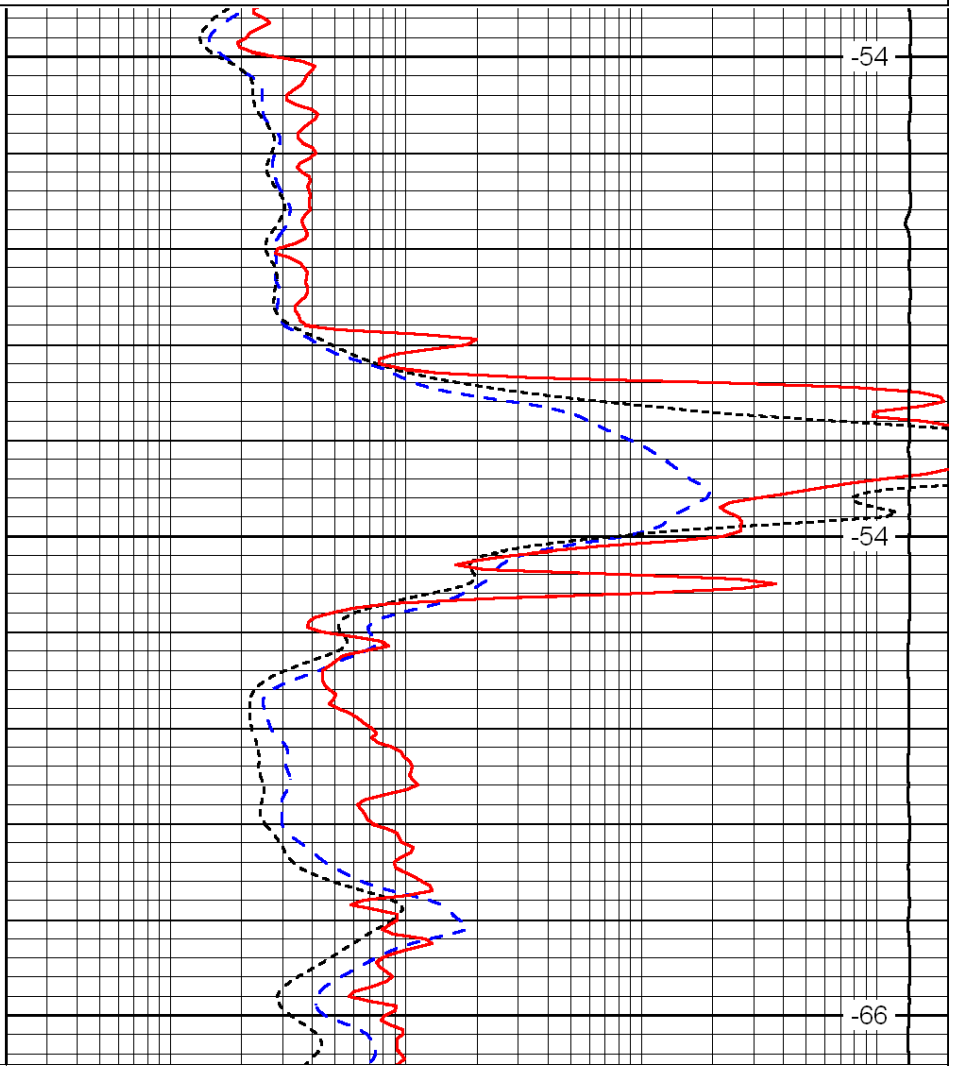


650

700

750

0	Gamma Ray	150
-200	SP (mV)	0
-160	Rxo / Rt	40



-54

-54

-66

0.2	Deep Resistivity	2000
0.2	Medium Resistivity	2000
0.2	Shallow Resistivity	2000
15000	Line Tension	0

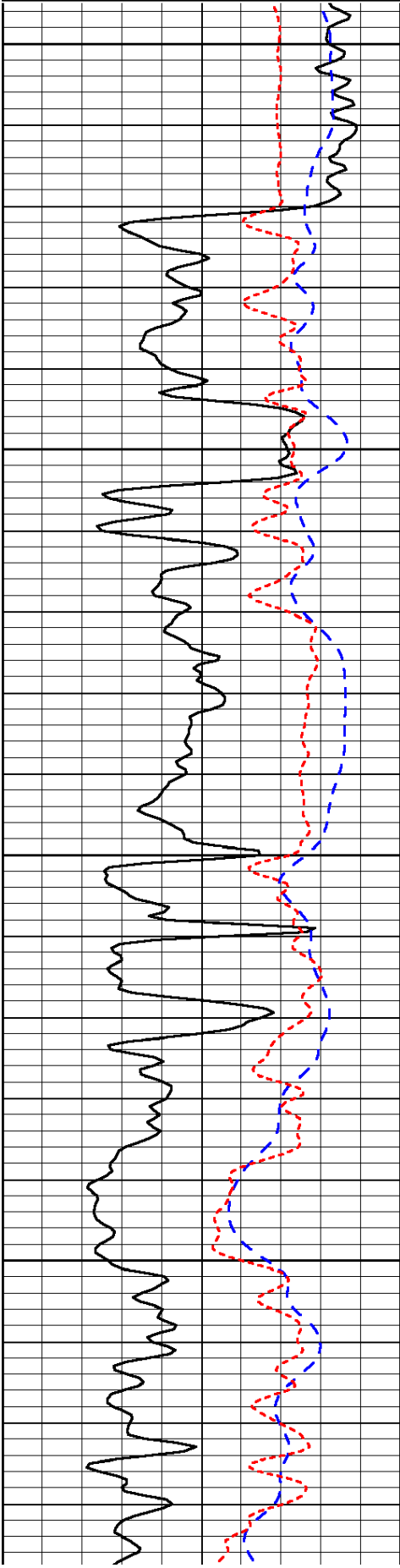
LSPD

Database File: c:\warrior\data\ld_drilling_jack no. 2-6\ld_jack_2-6hd.db
 Dataset Pathname: dil\ldstmlsn
 Presentation Format: dil
 Dataset Creation: Thu Mar 31 12:09:07 2011
 Charted by: Depth in Feet scaled 1:240

0	Gamma Ray	150
-200	SP (mV)	0
-160	Rxo / Rt	40

0.2	Deep Resistivity	2000
0.2	Medium Resistivity	2000
0.2	Shallow Resistivity	2000
15000	Line Tension	0

LSPD

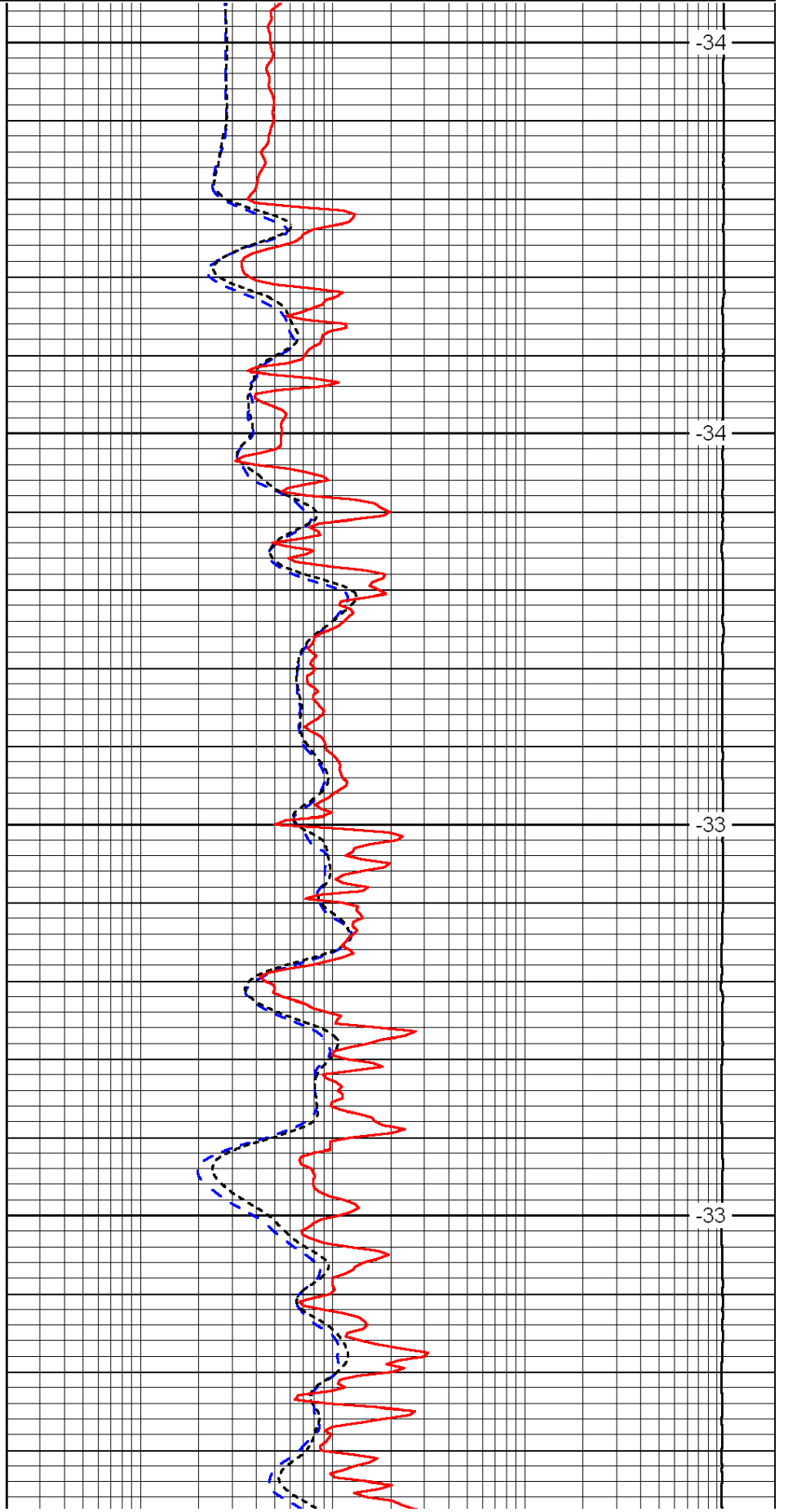


2600

2650

2700

2750

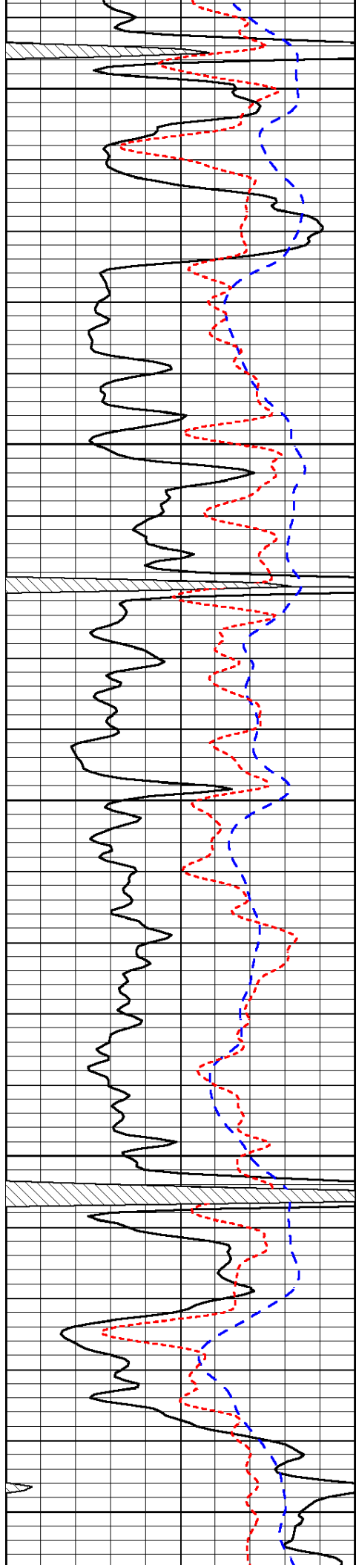


-34

-34

-33

-33



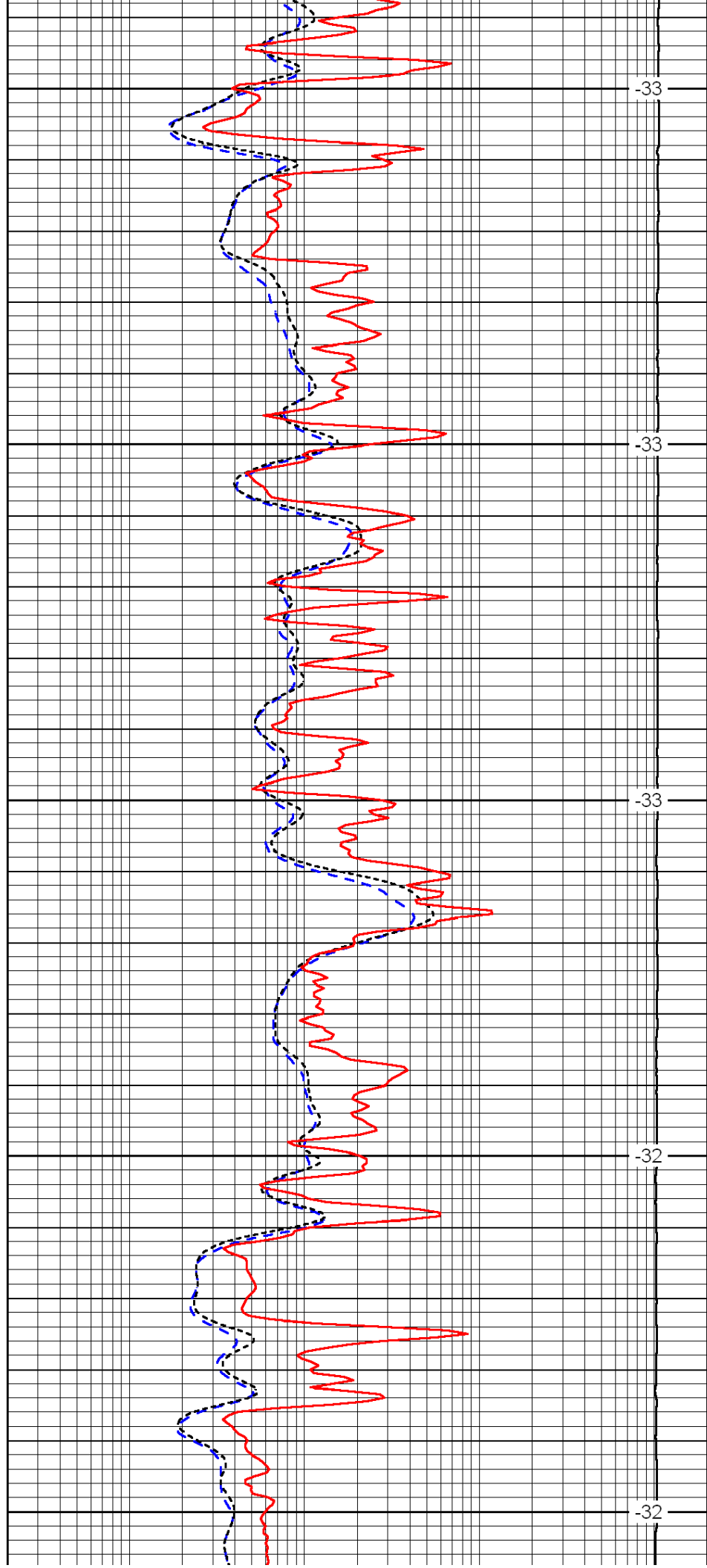
2800

2850

2900

2950

3000



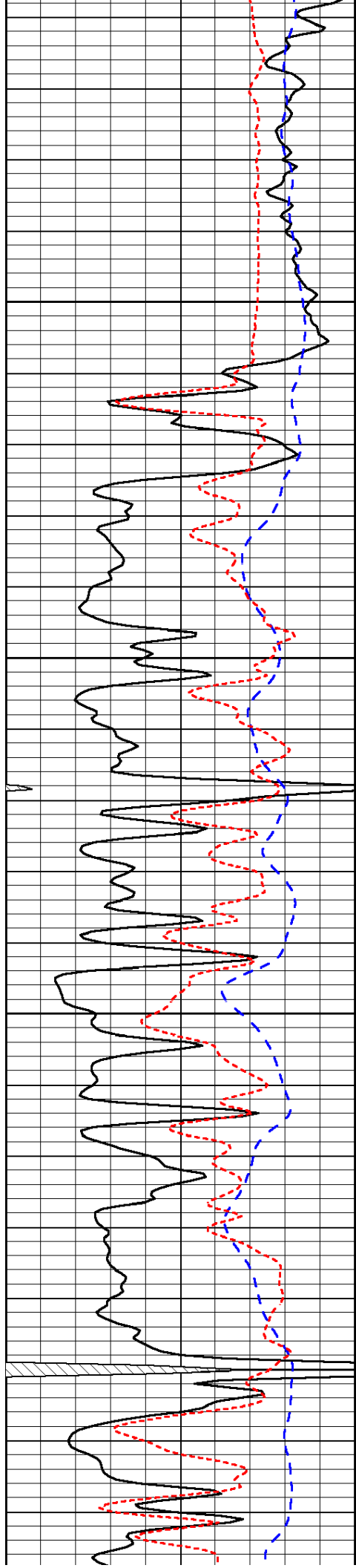
-33

-33

-33

-32

-32

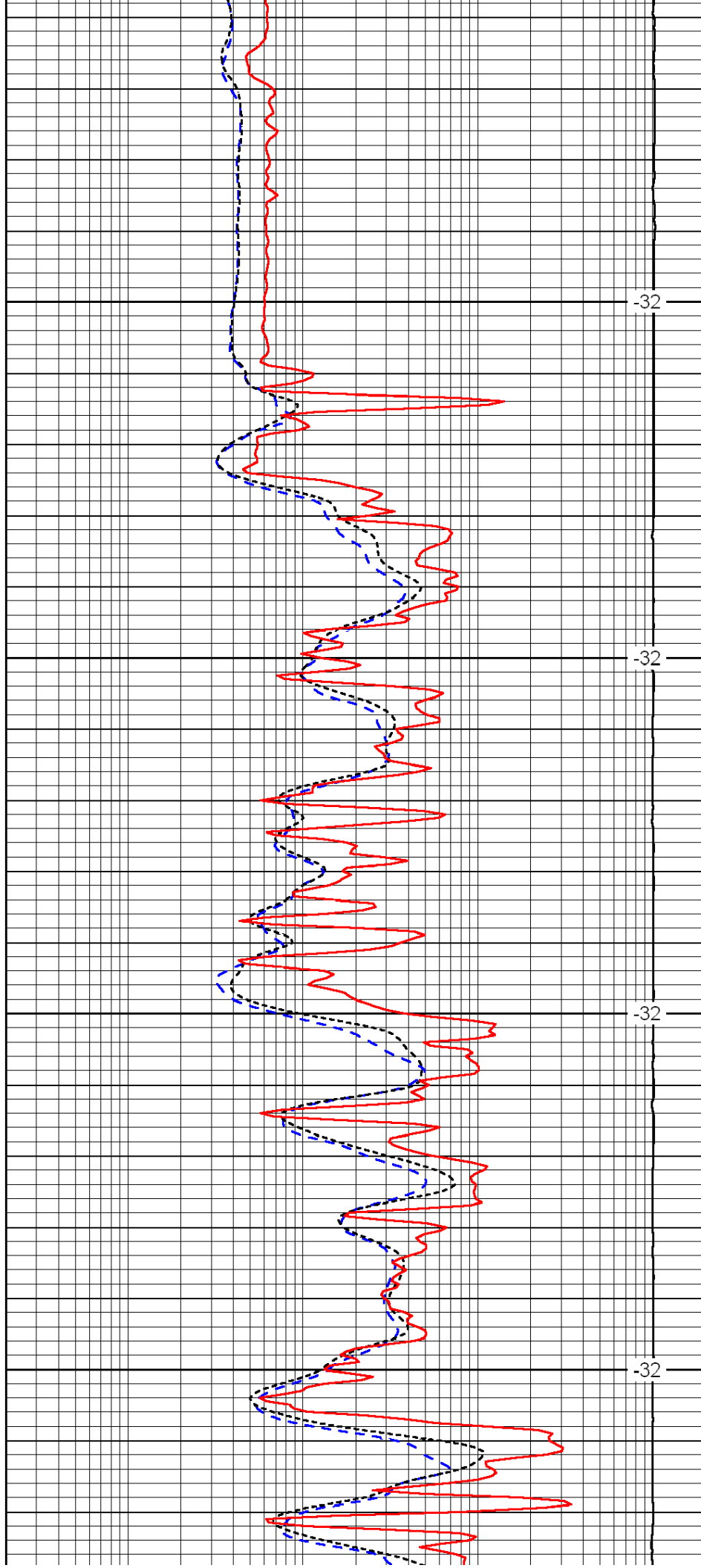


3050

3100

3150

3200

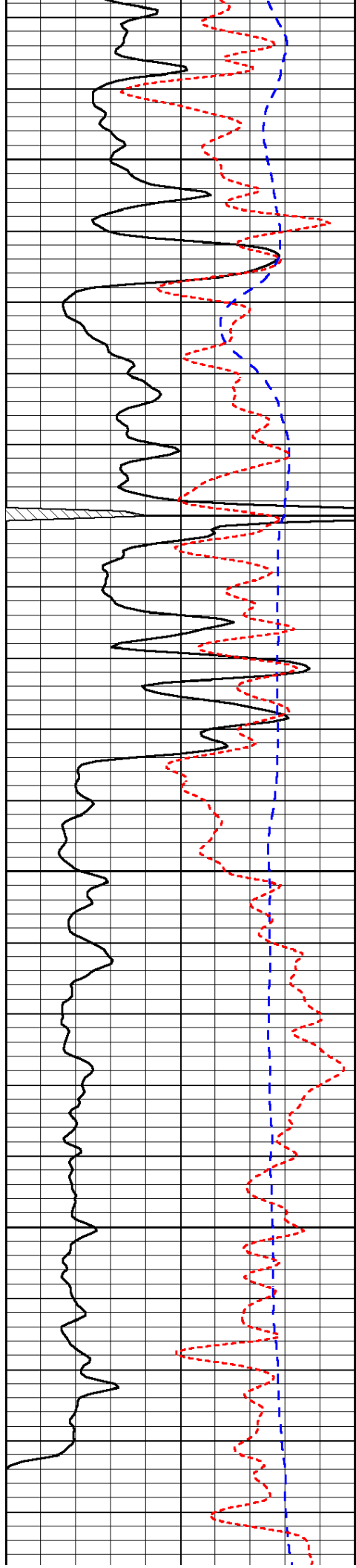


-32

-32

-32

-32

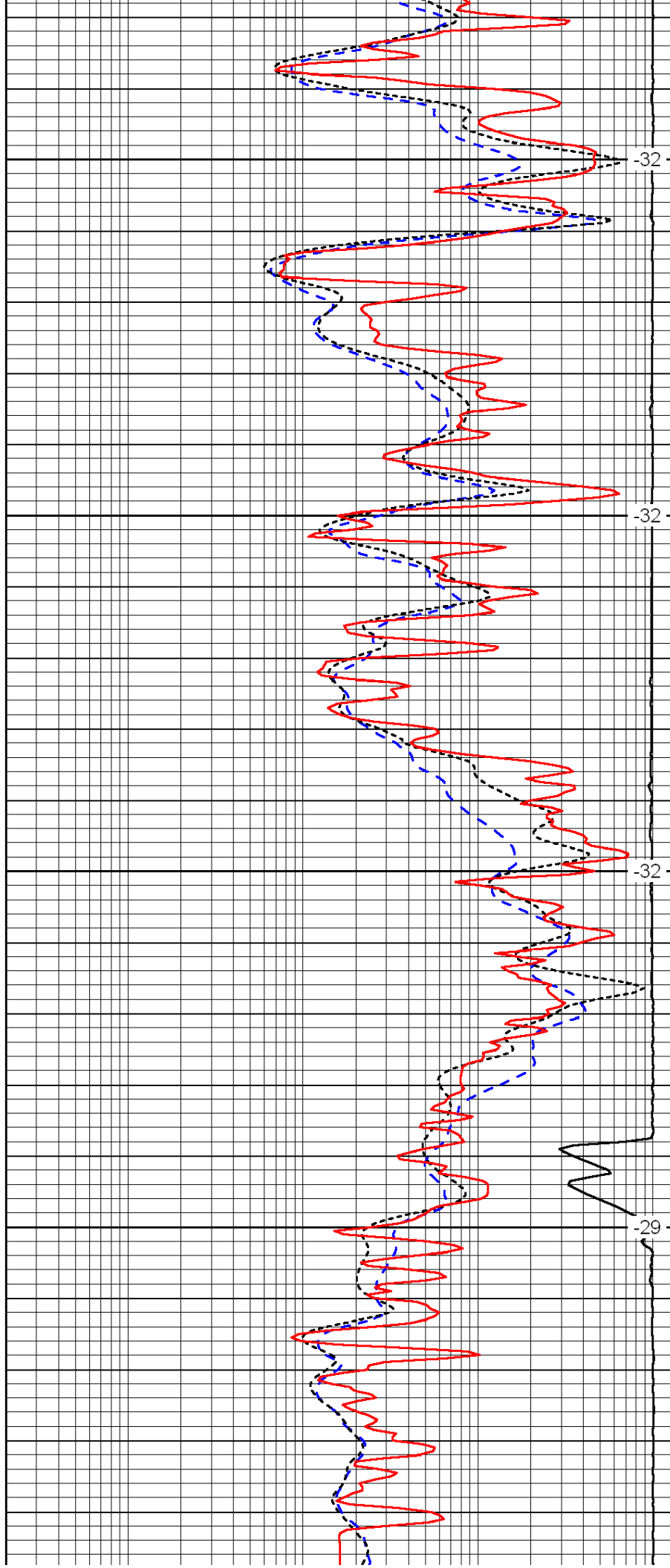


3250

3300

3350

3400

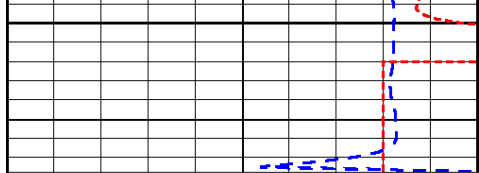


-32

-32

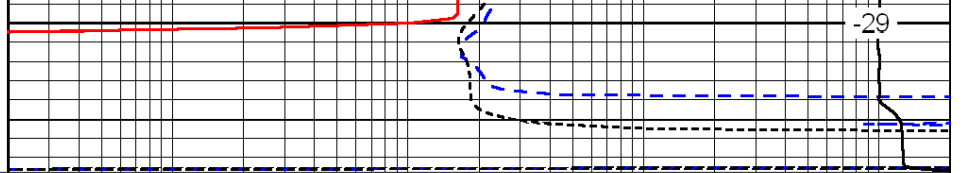
-32

-29



0	Gamma Ray	150
-200	SP (mV)	0
-160	Rxo / Rt	40

3450



0.2	Deep Resistivity	2000
0.2	Medium Resistivity	2000
0.2	Shallow Resistivity	2000

15000	Line Tension	0
-------	--------------	---

LSPD