



Microresistivity Log

DIGITAL LOG (785) 625-3858

API No.	15-009-25,537-00-00		
Company	L.D. Drilling, Inc.		
Well	Jack No. 2-6		
Field			
County	Barton	State	Kansas
Location	1,650' FSL & 330' FWL		
Sec: 6	Twp: 18S	Rge: 11W	
Permanent Datum	Ground Level	Elevation	1829
Log Measured From	Kelly Bushing	5 Ft. Above Perm. Datum	
Drilling Measured From	Kelly Bushing		
		Other Services	CNL/CDL DIL/BHCS
		Elevation	K.B. 1834 D.F. 1829 G.L. 1829

Date	3/31/2011	
Run Number	Two	
Depth Driller	3460	
Depth Logger	3459	
Bottom Logged Interval	3458	
Top Log Interval	2600	
Casing Driller	8.625 @ 342	
Casing Logger	337	
Bit Size	7.875	
Type Fluid in Hole	Chemical	
Salinity, ppm CL	5000	
Density / Viscosity	9.3	56
pH / Fluid Loss	10.0	8.8
Source of Sample	Flowline	
Rm @ Meas. Temp	.50	@ 51
Rmf @ Meas. Temp	.38	@ 51
Rmc @ Meas. Temp	.68	@ 51
Source of Rmf / Rmc	Charts	
Rm @ BHT	.23	@ 111
Operating Rig Time	4 Hours	
Max Rec. Temp. F	111	
Equipment Number	10	
Location	Hays	
Recorded By	J. Long	
Witnessed By	Jim Musgrove	

<<< Fold Here >>>

All interpretations are opinions based on inferences from electrical or other measurements and we cannot and do not guarantee the accuracy or correctness of any interpretation, and we shall not, except in the case of gross or willful negligence on our part, be liable or responsible for any loss, costs, damages, or expenses incurred or sustained by anyone resulting from any interpretation made by any of our officers, agents or employees. These interpretations are also subject to our general terms and conditions set out in our current Price Schedule.

Comments

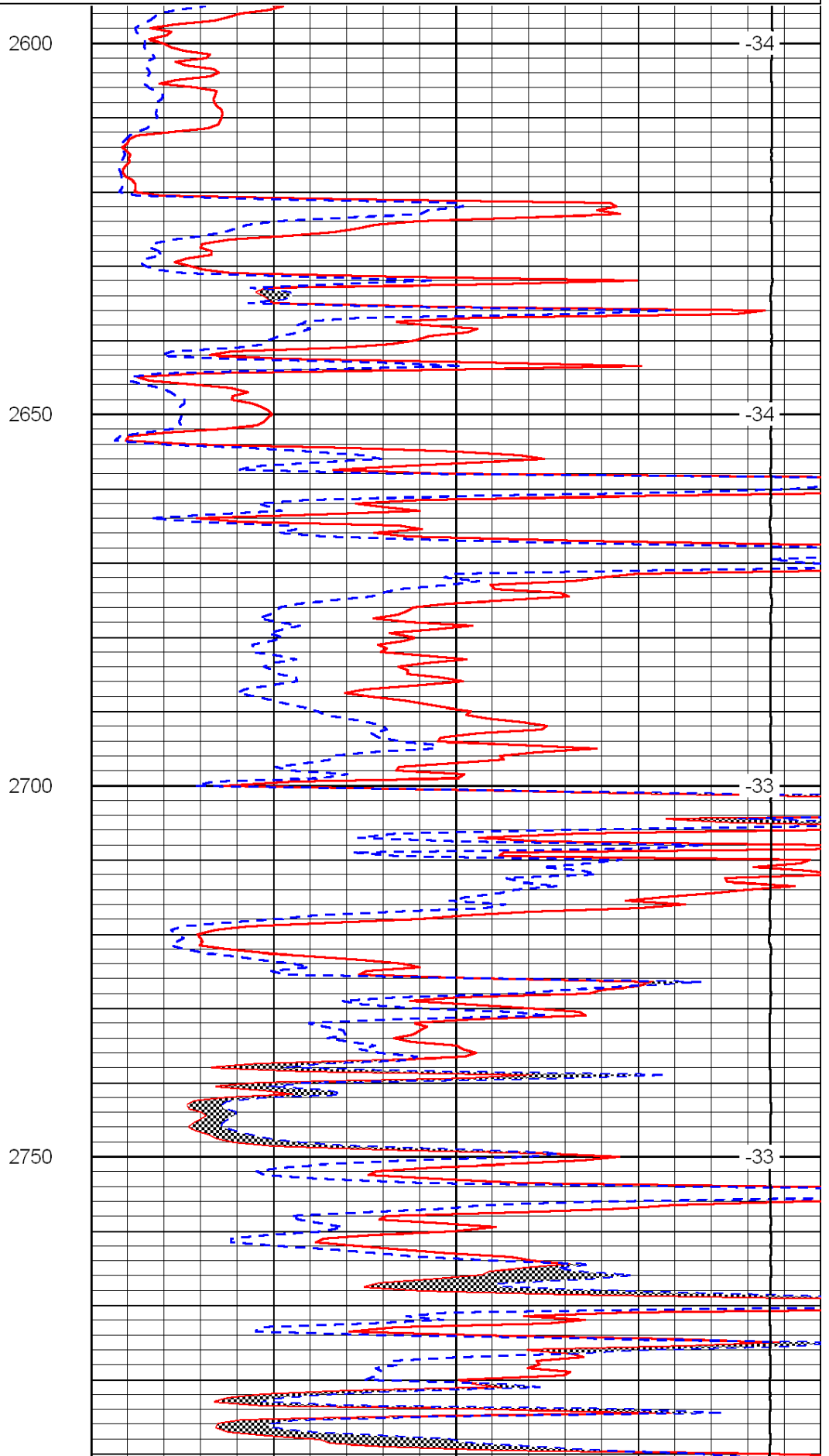
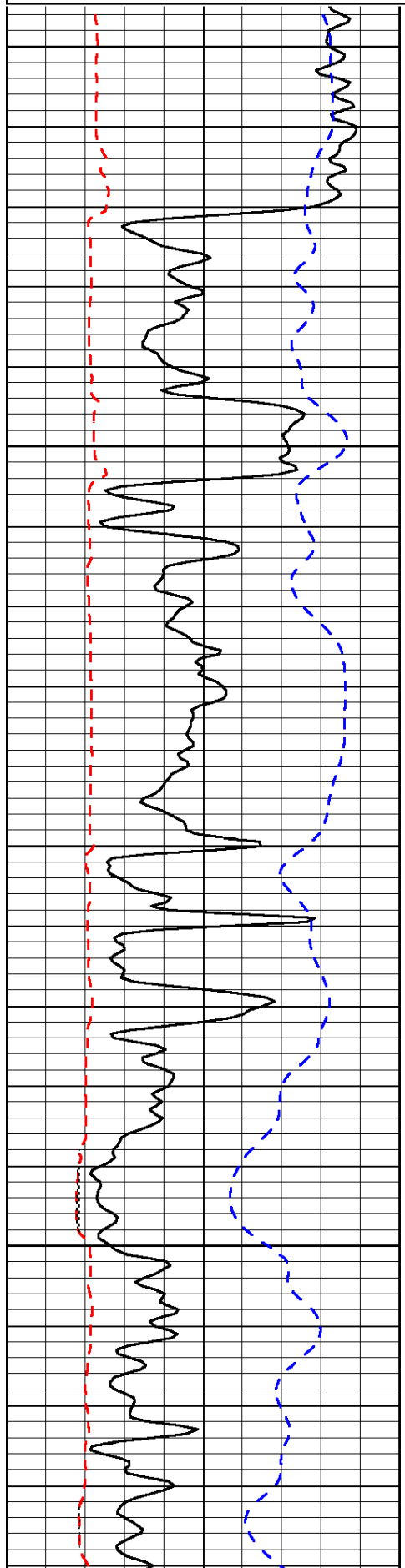
Thank you for using Log-Tech, Inc.
(785) 625-3858

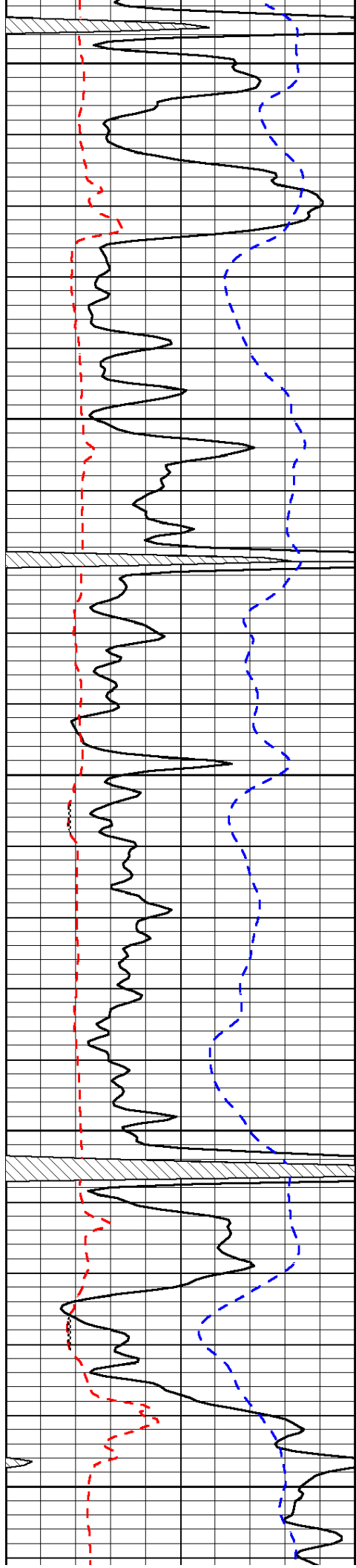
Claflin, 3 West to NE 100 Rd, 3/4 South, East Into

0	Gamma Ray	150
6	Micro Log Caliper (GAPI)	16
-200	SP (mV)	0

0	Micro Inverse 1 X 1	40
0	Micro Normal 2"	40
15000	Line Weight	0

LSPD





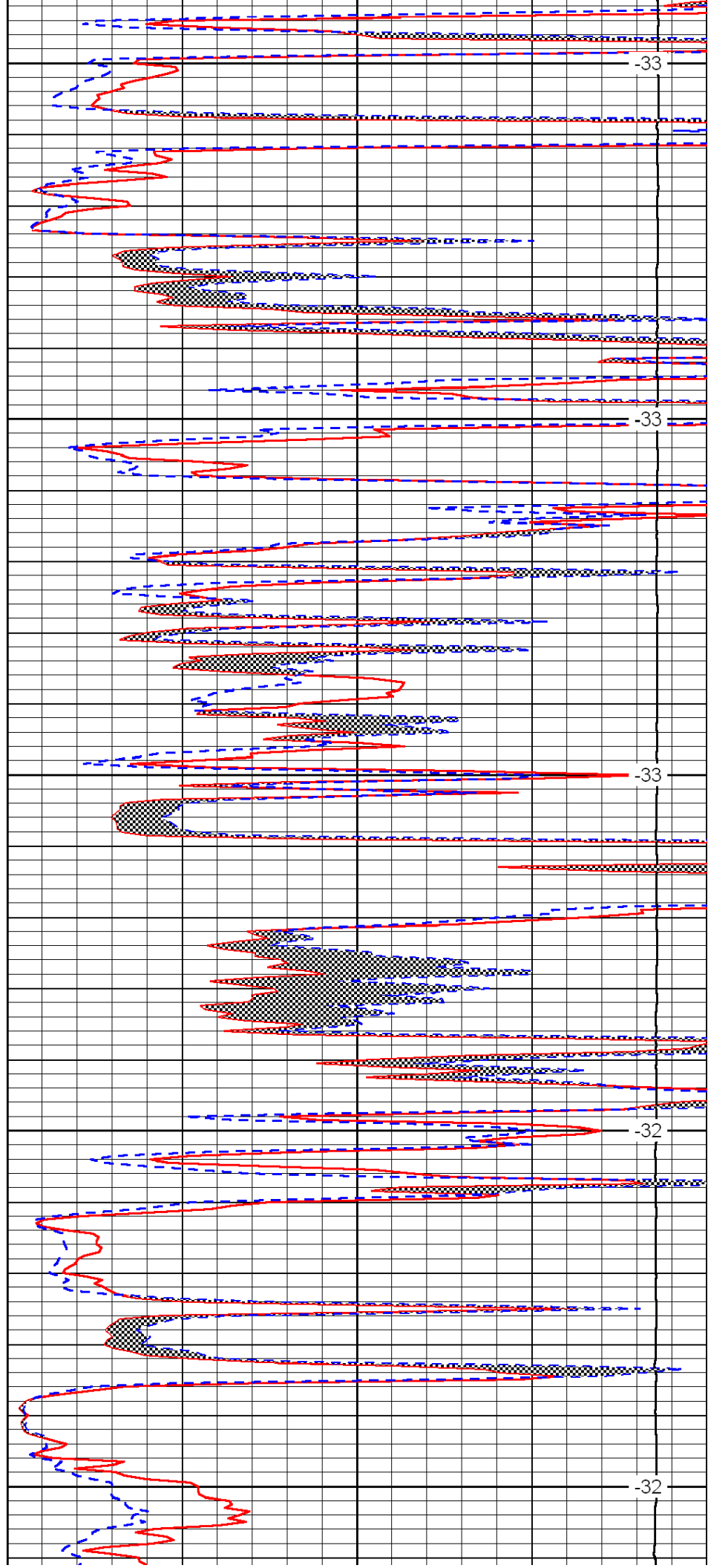
2800

2850

2900

2950

3000



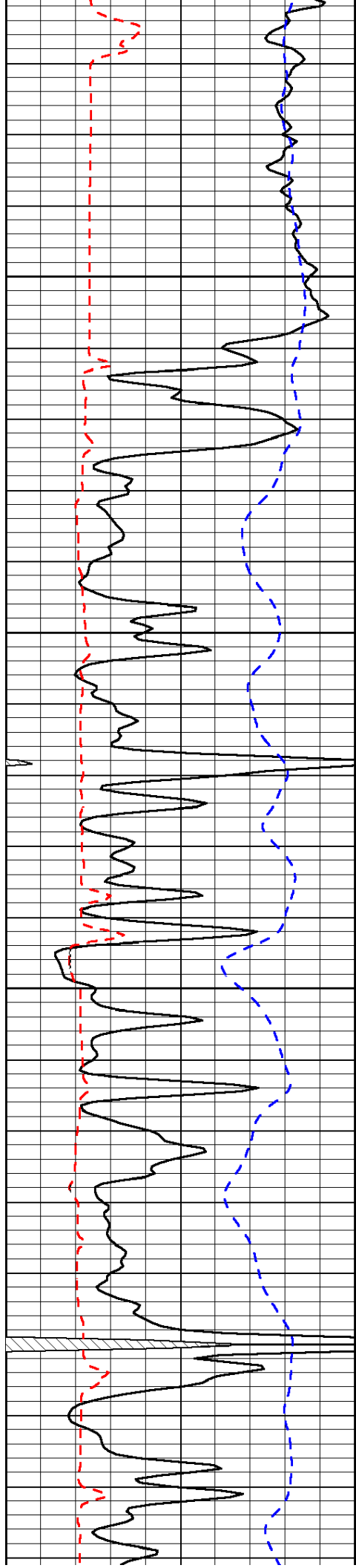
-33

-33

-33

-32

-32

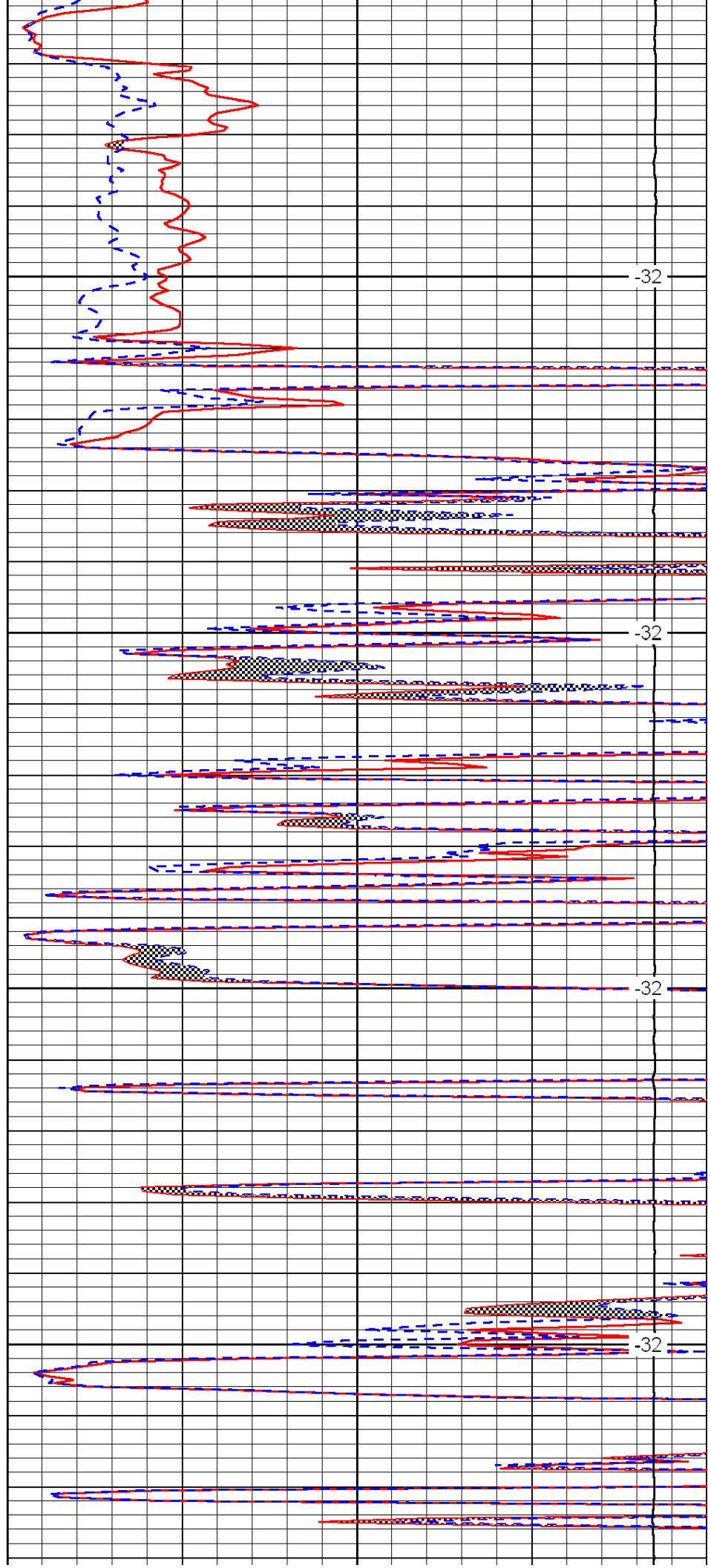


3050

3100

3150

3200

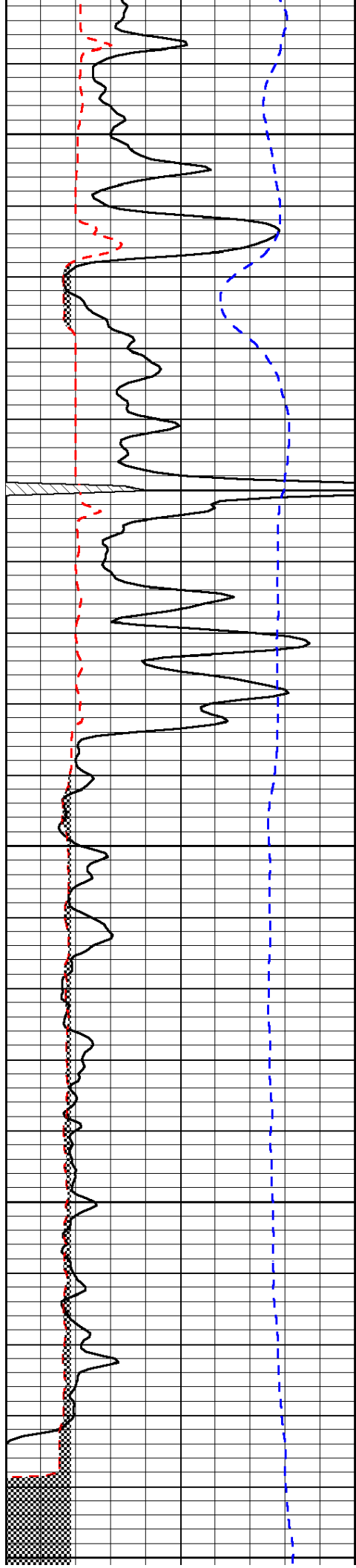


-32

-32

-32

-32



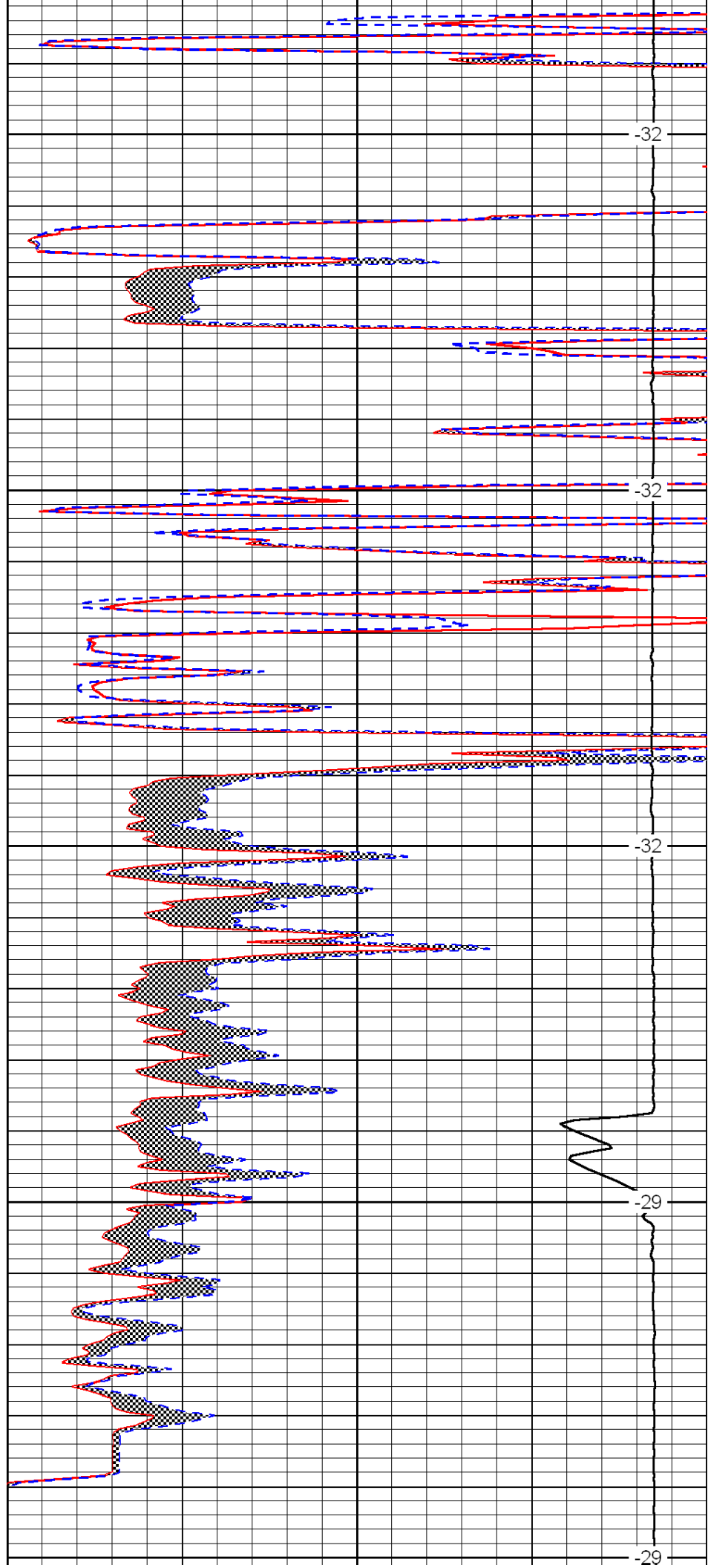
3250

3300

3350

3400

3450



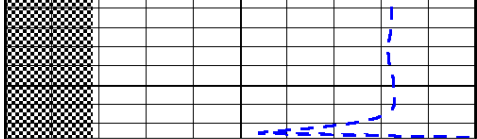
-32

-32

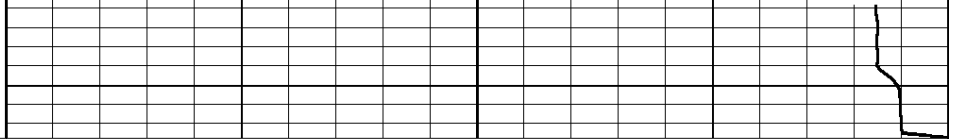
-32

-29

-29



0	Gamma Ray	150
6	Micro Log Caliper (GAPI)	16
-200	SP (mV)	0



0	Micro Inverse 1 X 1	40
0	Micro Normal 2"	40
15000	Line Weight	0

LSPD