



**Borehole Compensated
Sonic Log**

DIGITAL LOG (785) 625-3858

API No.	15-009-25,537-00-00		
Company	L. D. Drilling, Inc.		
Well	Jack No. 2-6		
Field	Barton		
County	Barton		
State	Kansas		
Location	1,650' FSL & 330' FWL		
Sec:	6	Twp:	18S
Rge:	11W		
Other Services	CNL/CDL MEL/DIL		

Permanent Datum	Ground Level	Elevation	1829
Log Measured From	Kelly Bushing	5	Ft. Above Perm. Datum
Drilling Measured From	Kelly Bushing		
Date	3/31/2011		

Run Number	Two
Type Log	BHC Sonic
Depth Driller	3460
Depth Logger	3459
Bottom Logged Interval	3448
Top Logged Interval	300
Type Fluid In Hole	Chemical
Salinity, PPM CL	5000
Density	9.3
Level	Full
Max. Rec. Temp. F	111
Operating Rig Time	4 Hours
Equipment -- Location	10 Hays
Recorded By	J. Long
Witnessed By	Jim Musgrove

Borehole Record				Casing Record			
Run No.	Bit	From	To	Size	Wgt.	From	To
1	12.25	00	342	8.625	24#	00	342
2	7.875	342	3460				

<<< Fold Here >>>

All interpretations are opinions based on inferences from electrical or other measurements and we cannot and do not guarantee the accuracy or correctness of any interpretation, and we shall not, except in the case of gross or willful negligence on our part, be liable or responsible for any loss, costs, damages, or expenses incurred or sustained by anyone resulting from any interpretation made by any of our officers, agents or employees. These interpretations are also subject to our general terms and conditions set out in our current Price Schedule.

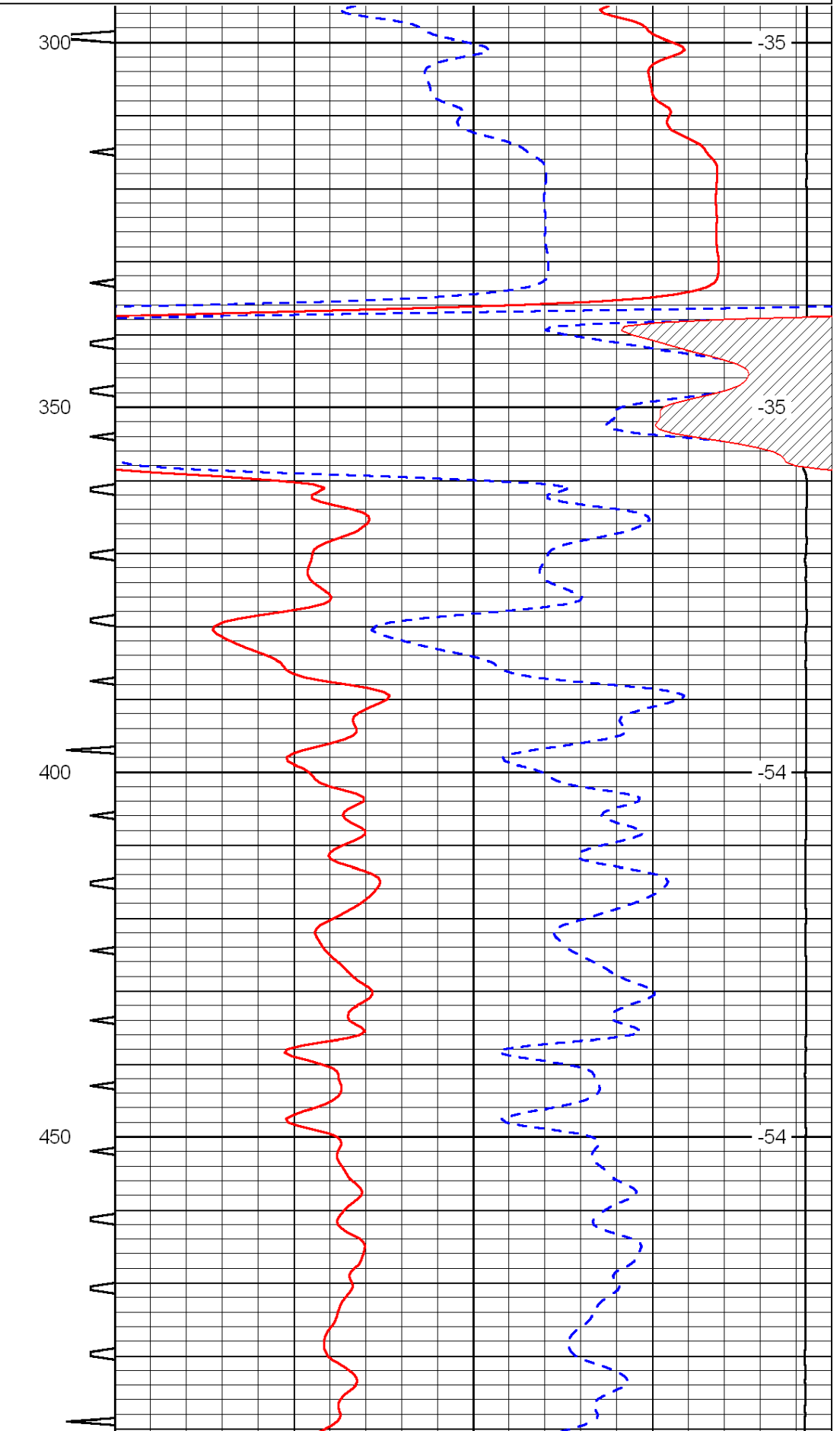
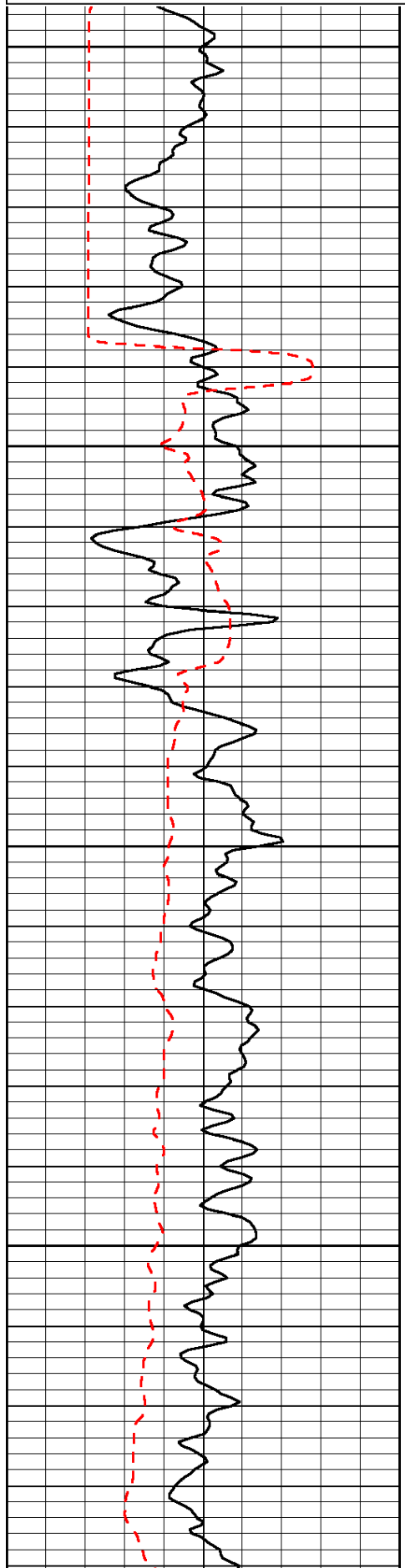
Comments

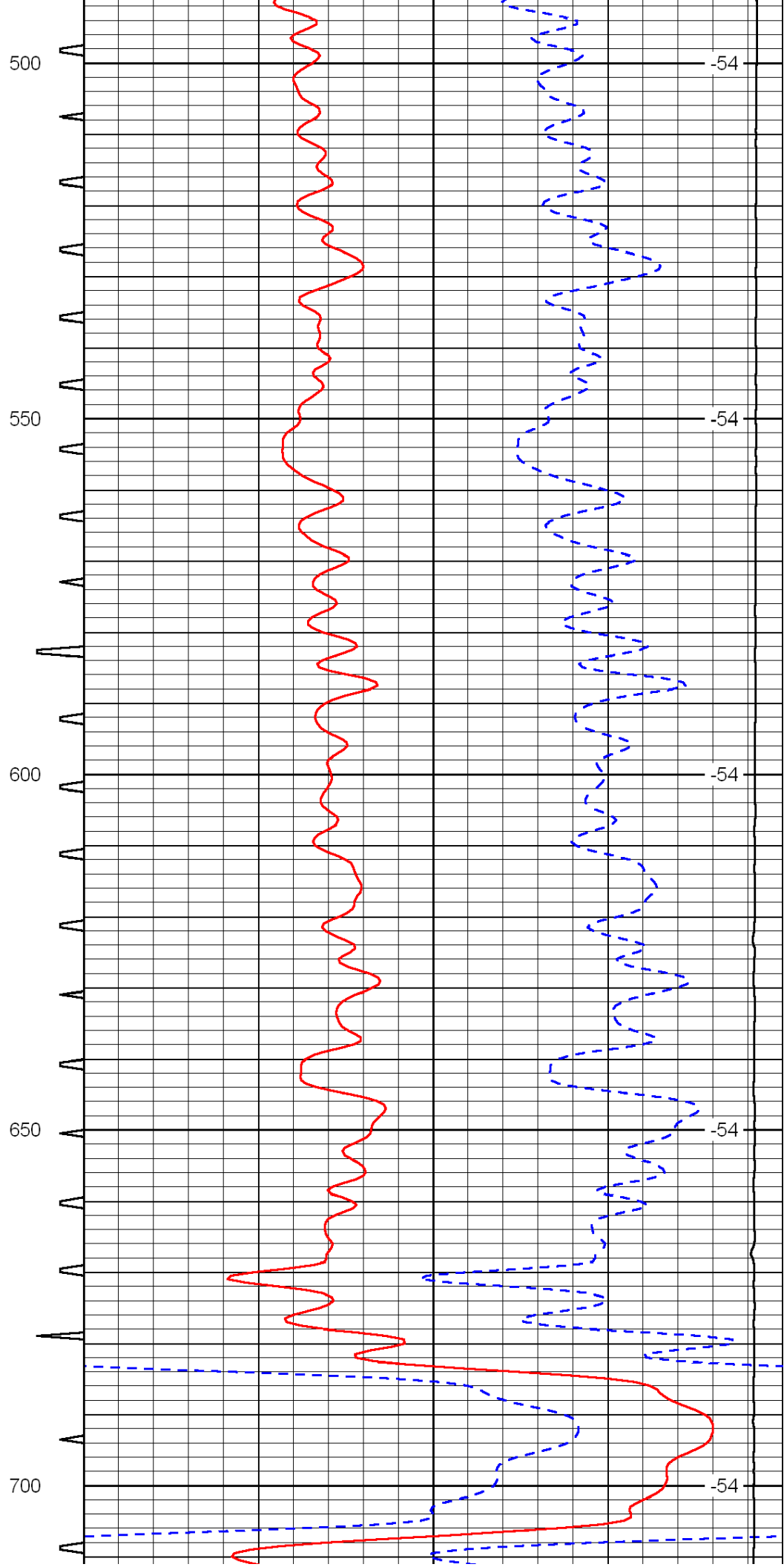
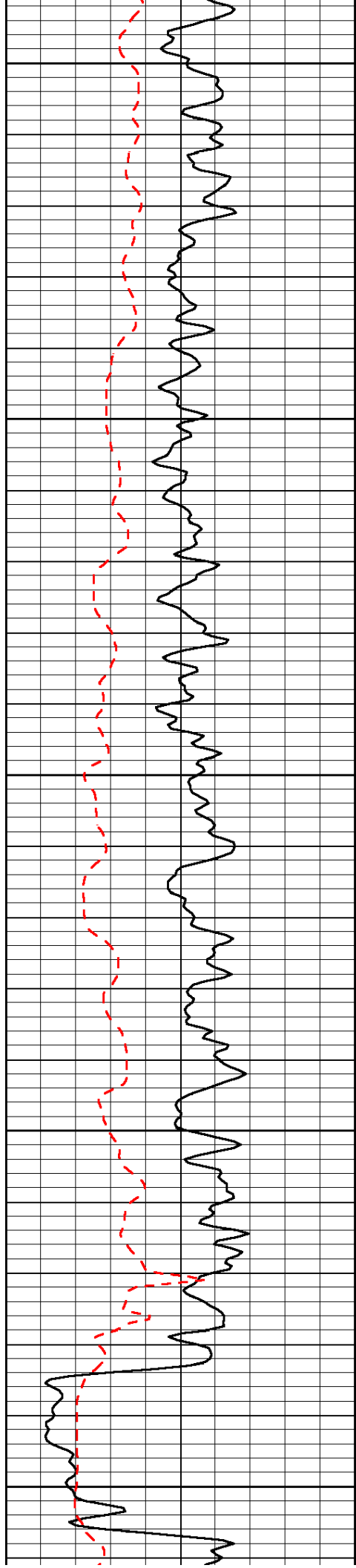
Thank you for using Log-Tech, Inc.
(785) 625-3858

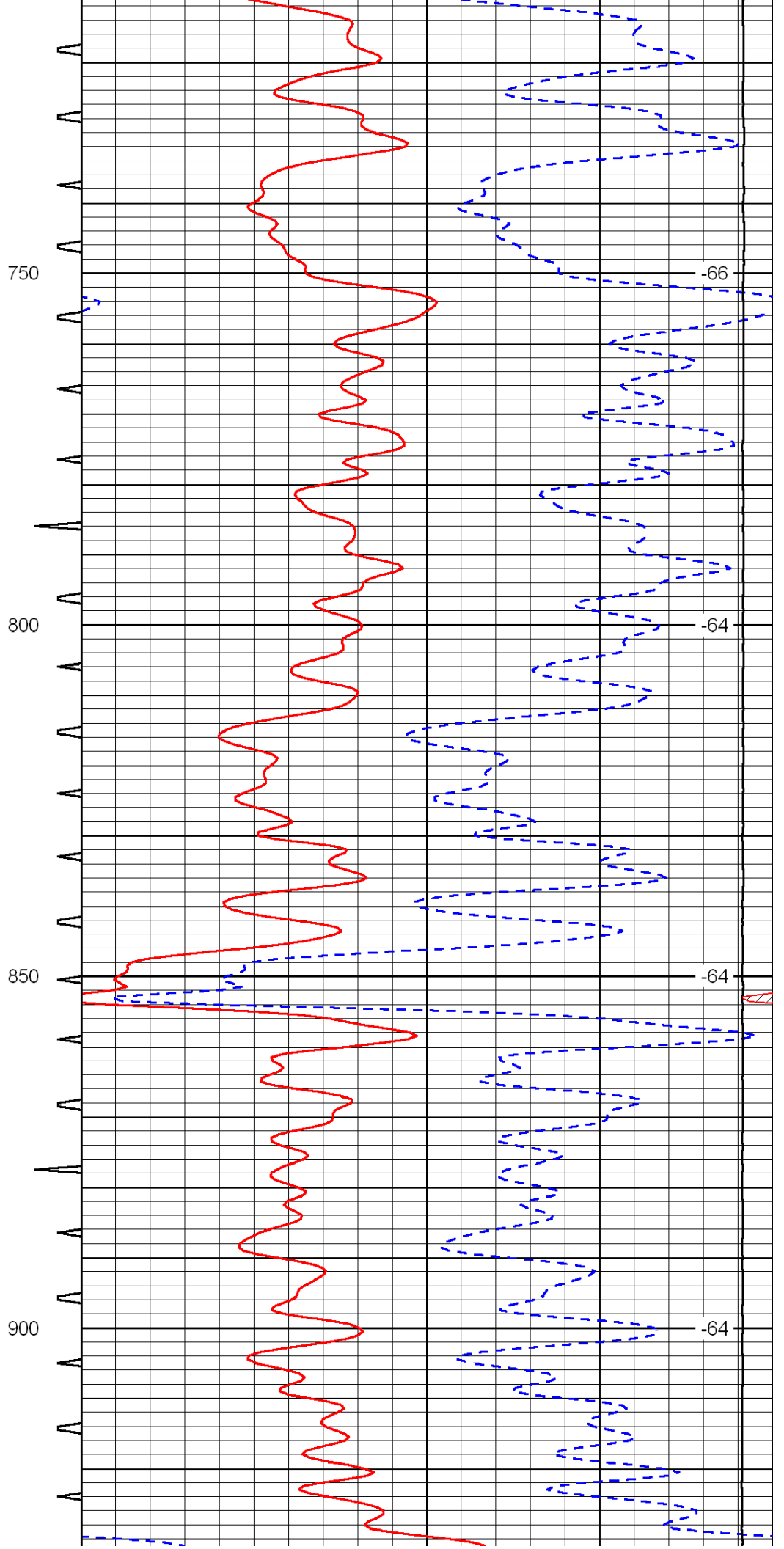
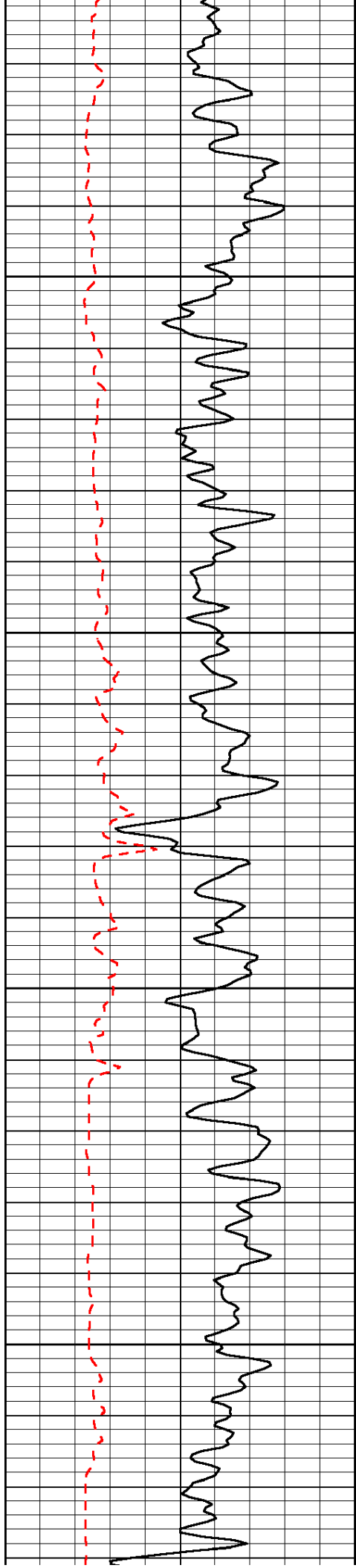
Claflin, 3 West to NE 100 Rd, 3/4 South, East Into

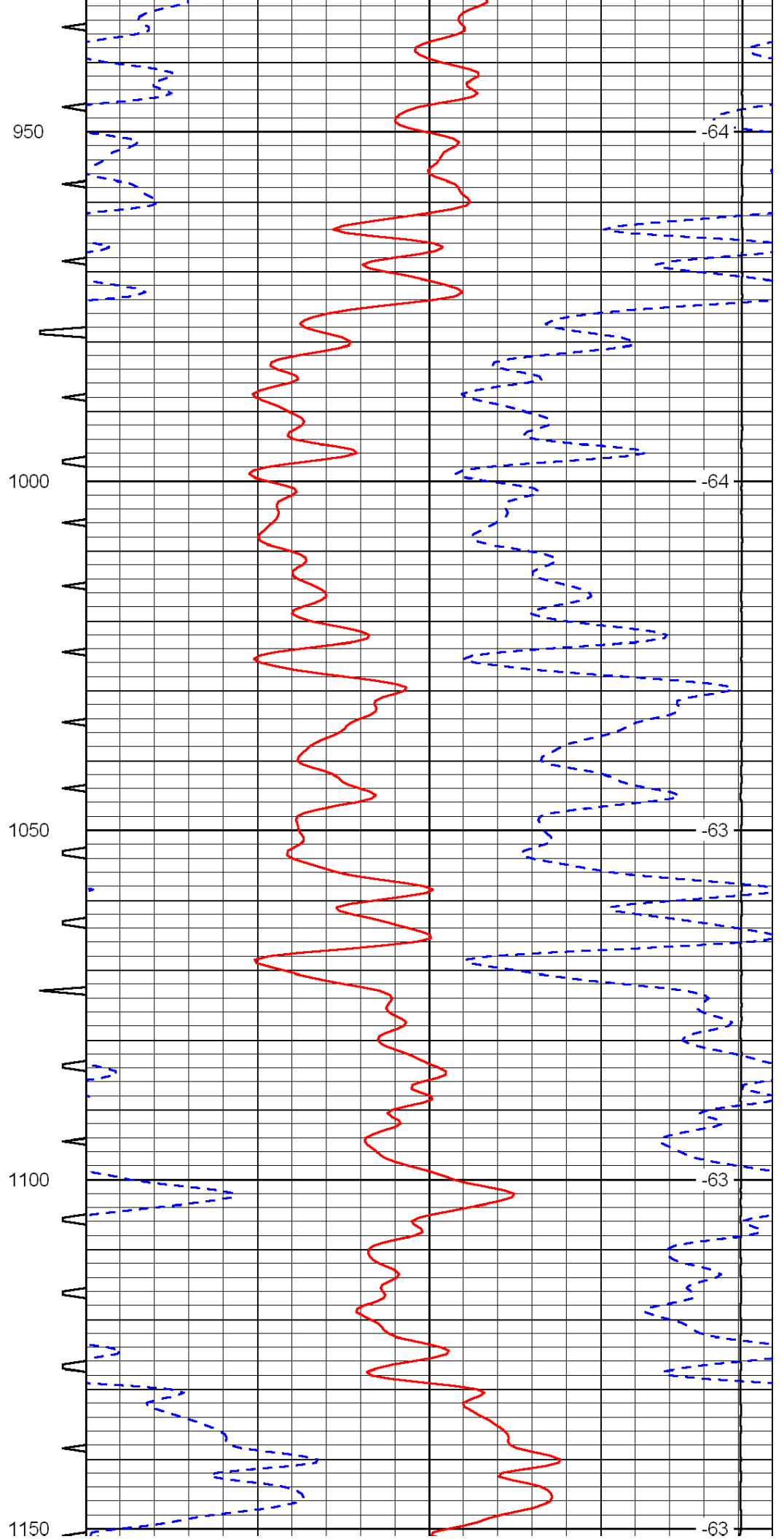
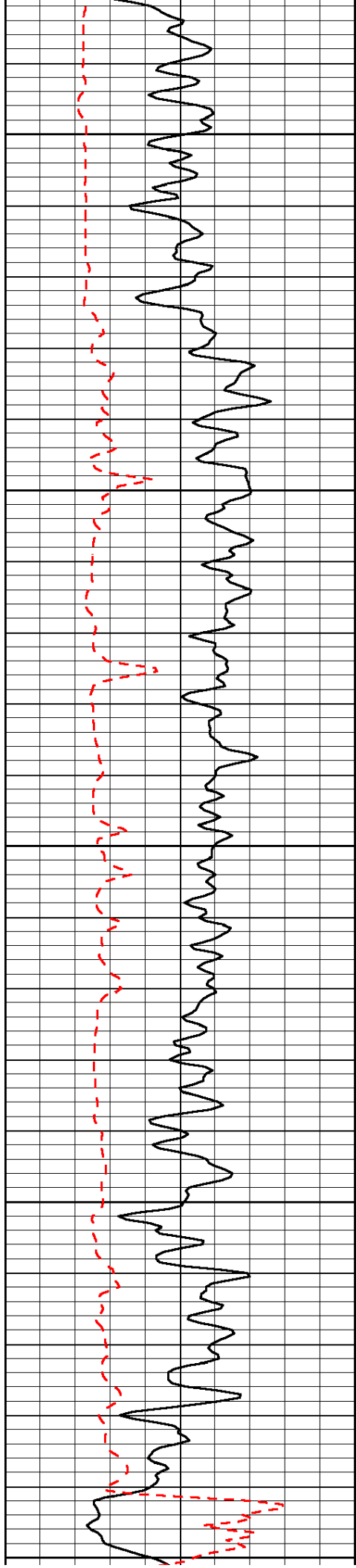
0	Gamma Ray	150	Sonic Int	140	Delta Time (usec/ft)	40
150	Gamma Ray	300	5	0	SPOR	-10
6	Caliper (GAPI)	16		15000	LTEN (lb)	0

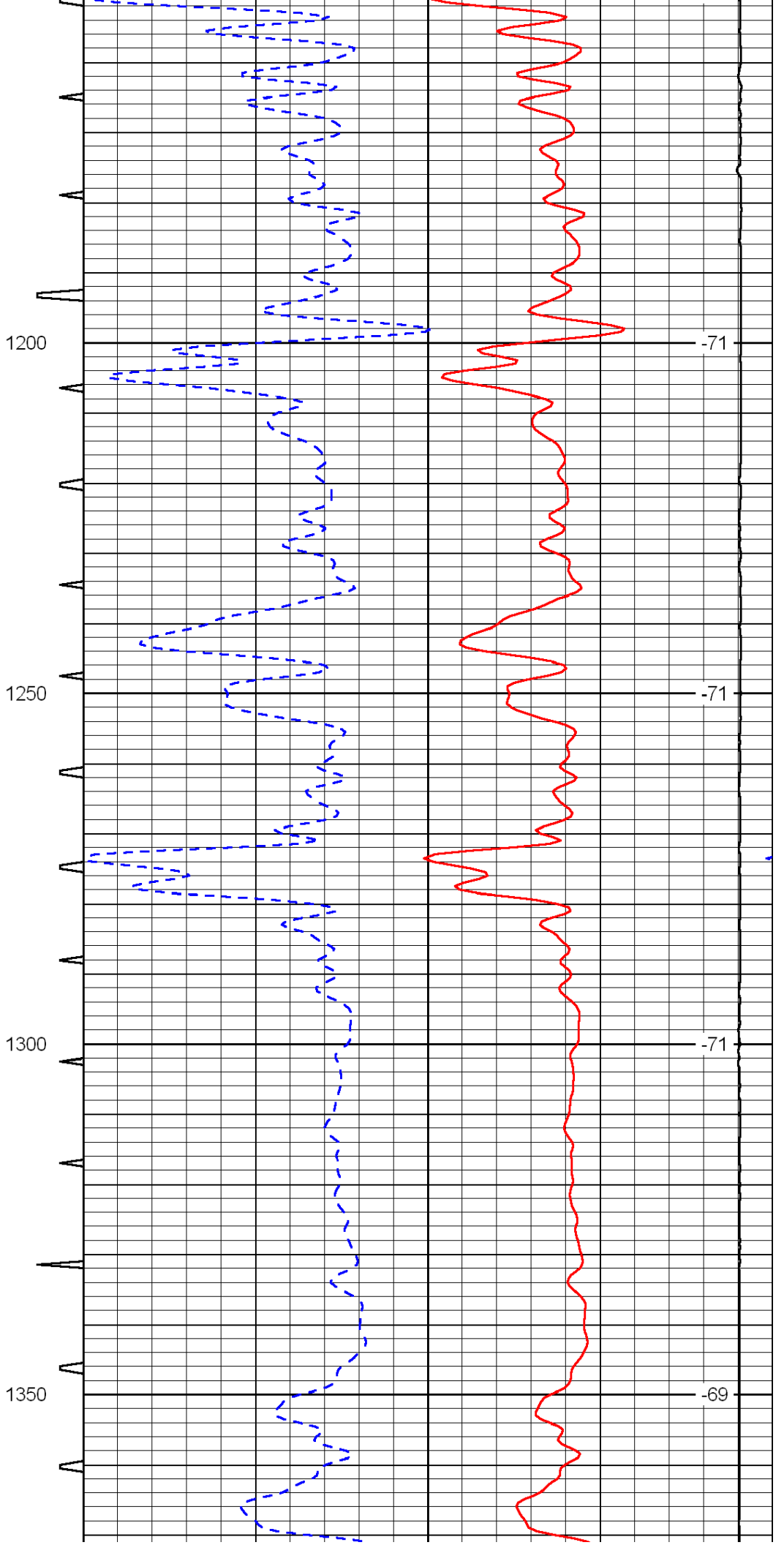
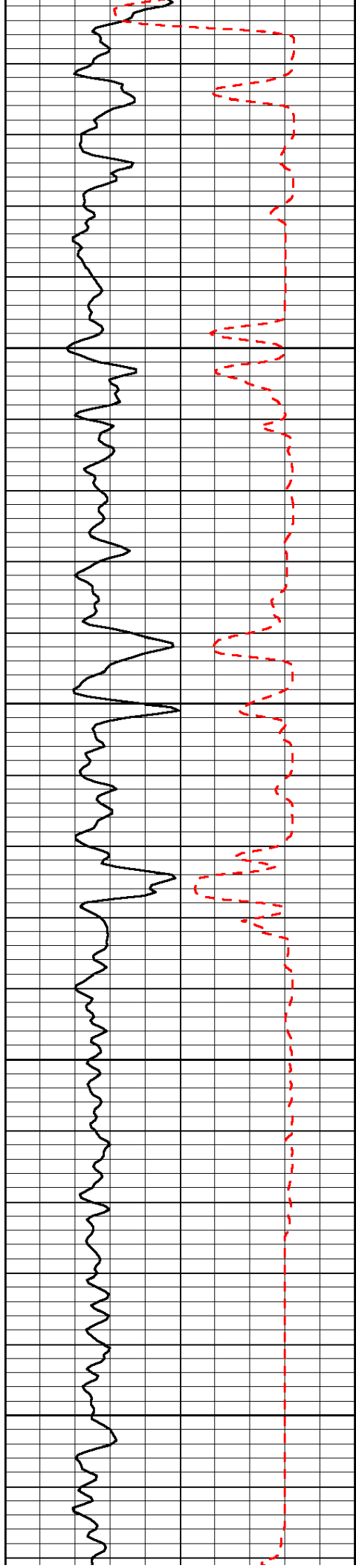
LSPD

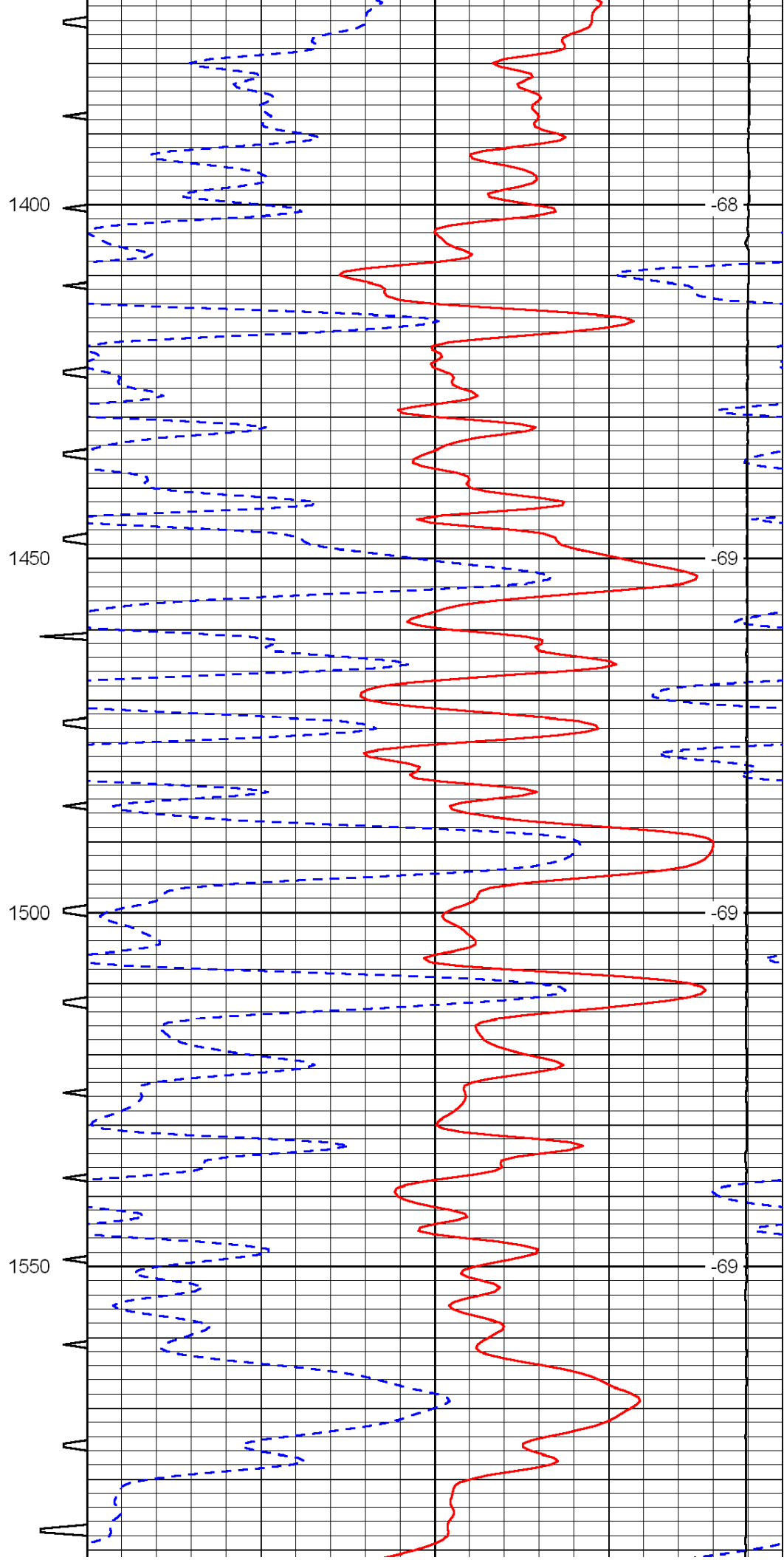
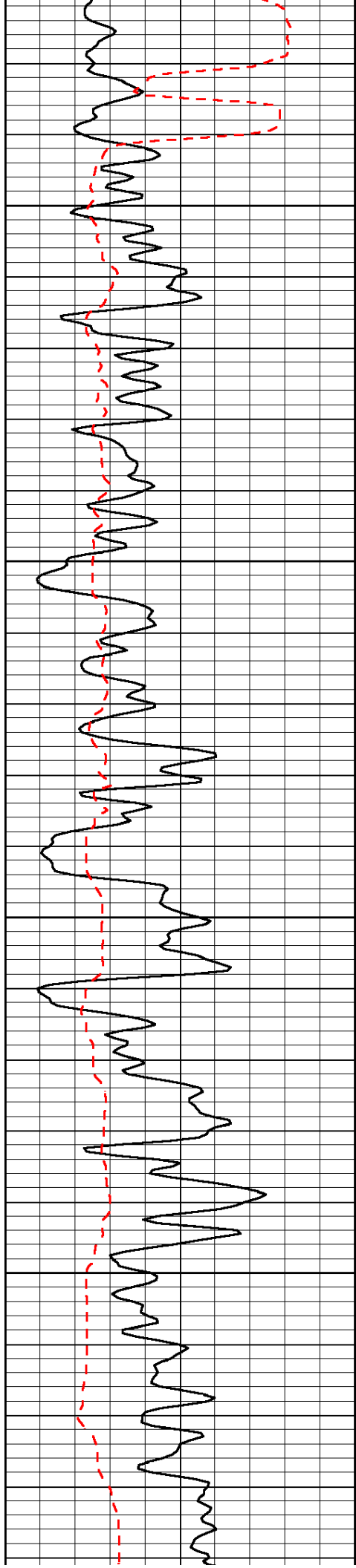


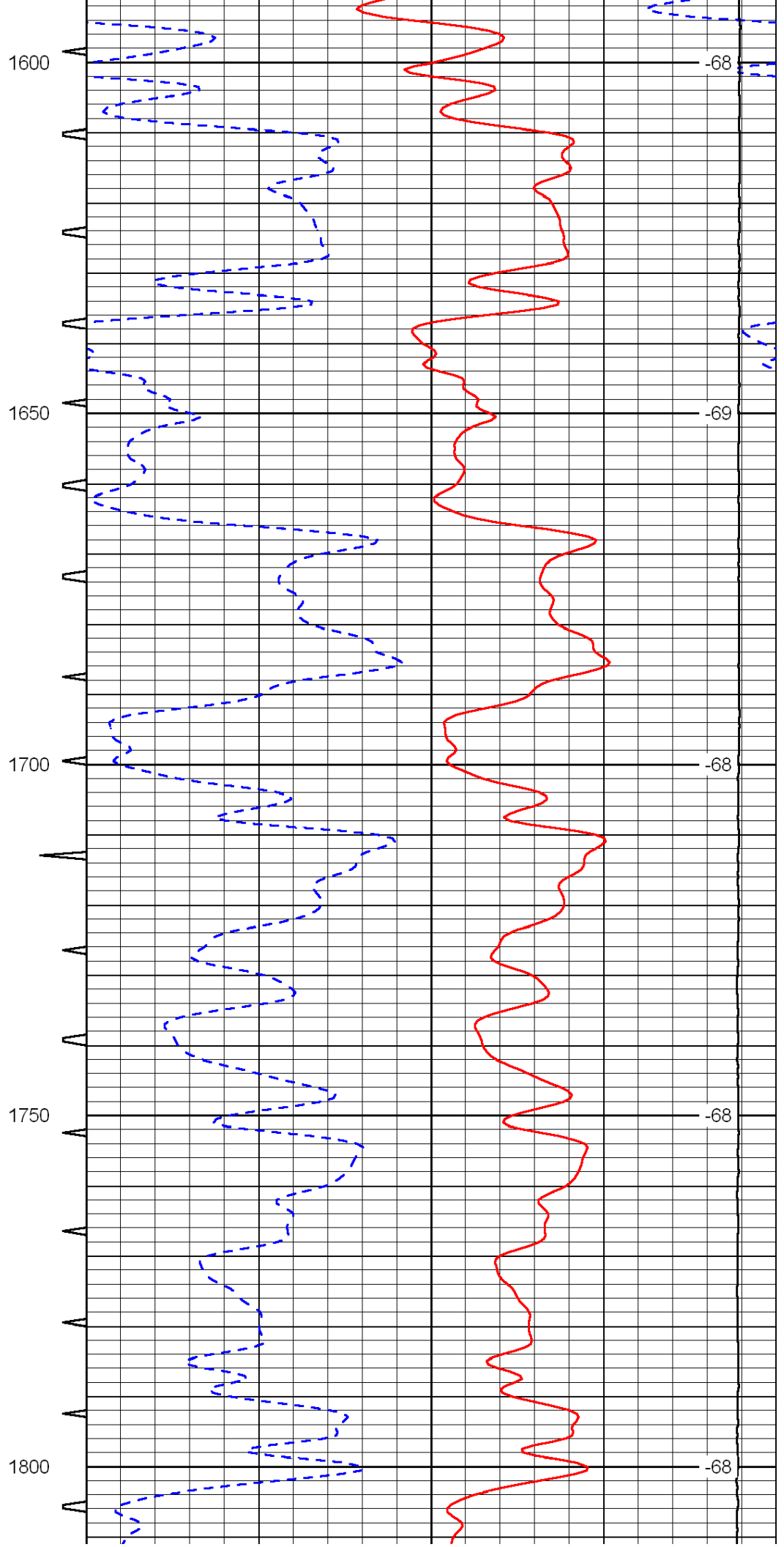
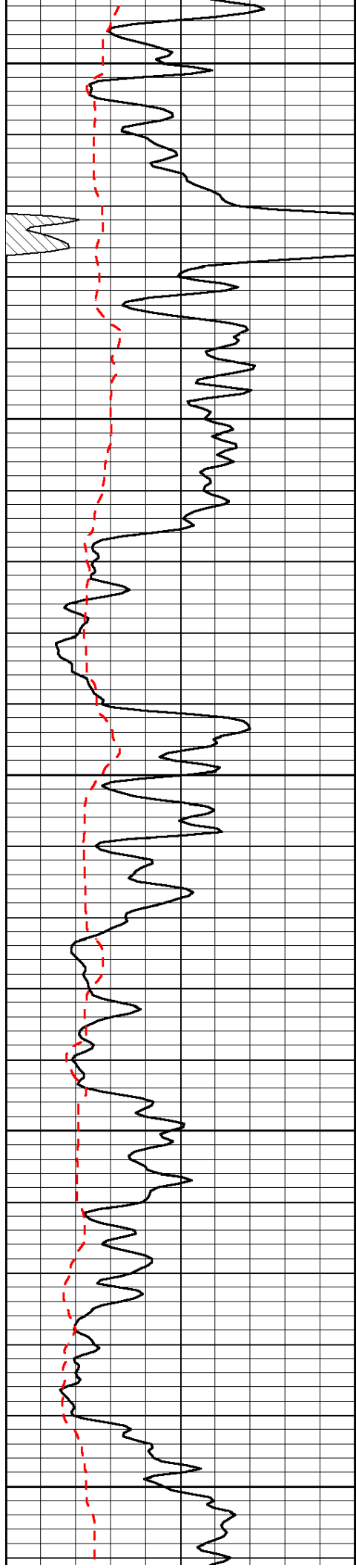


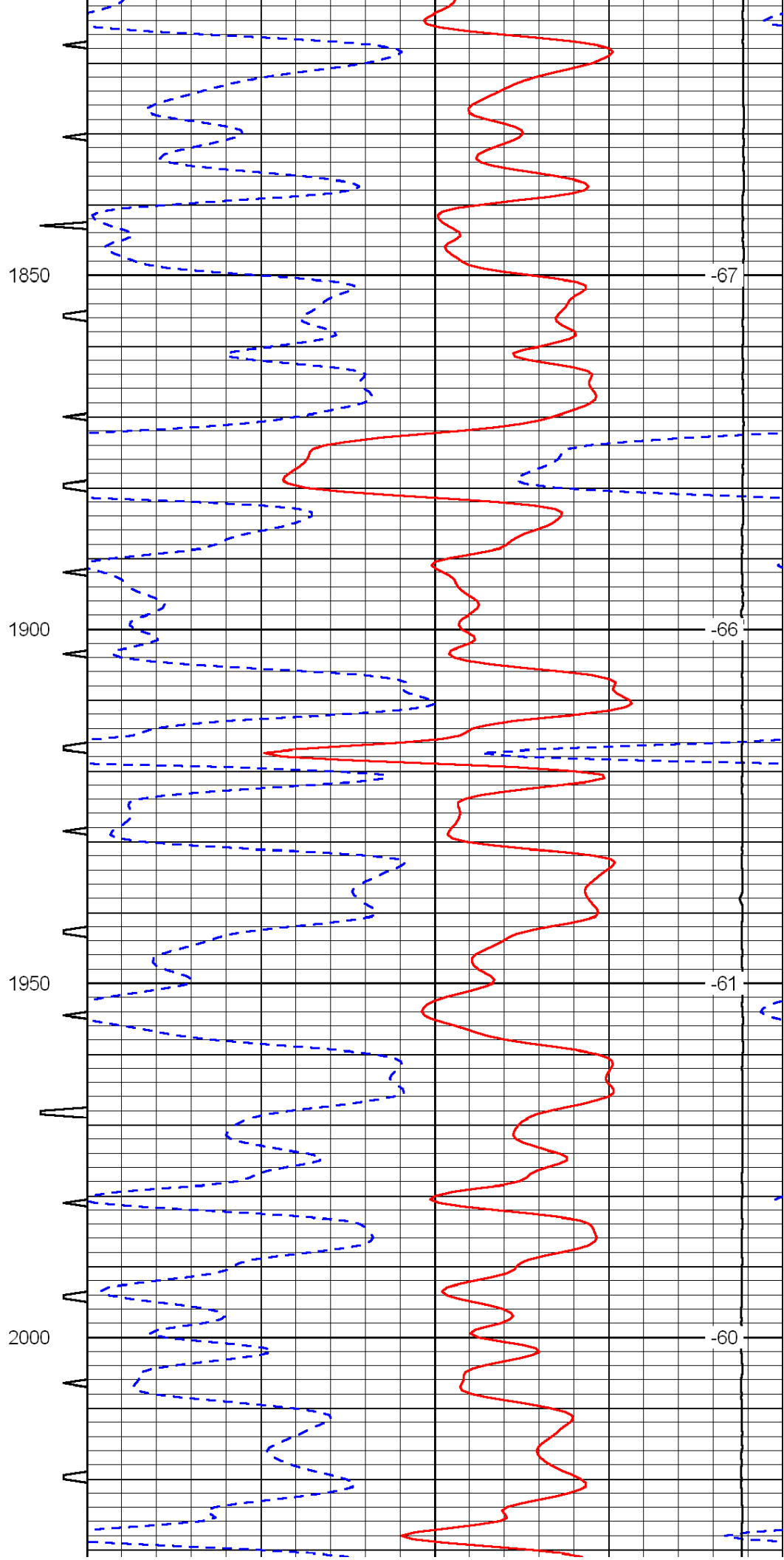
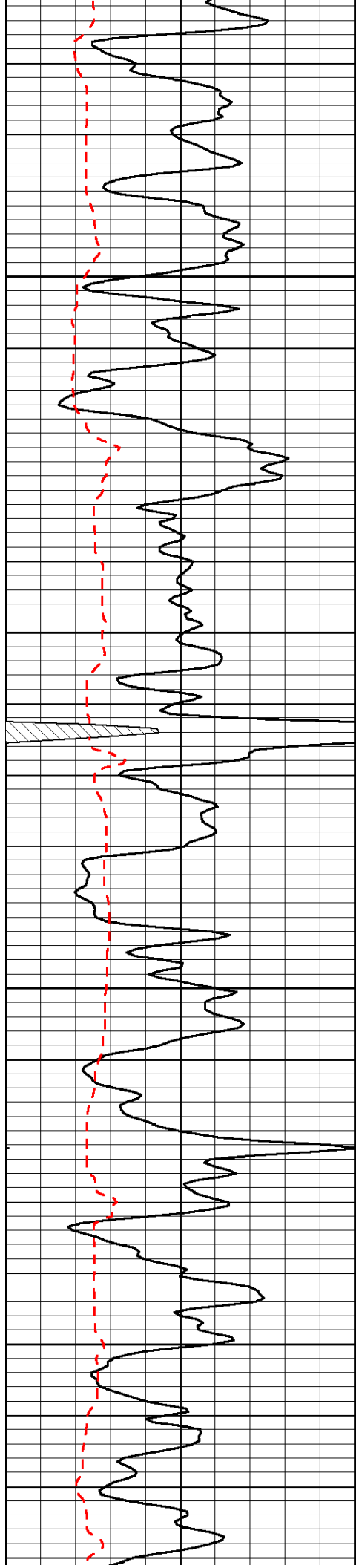


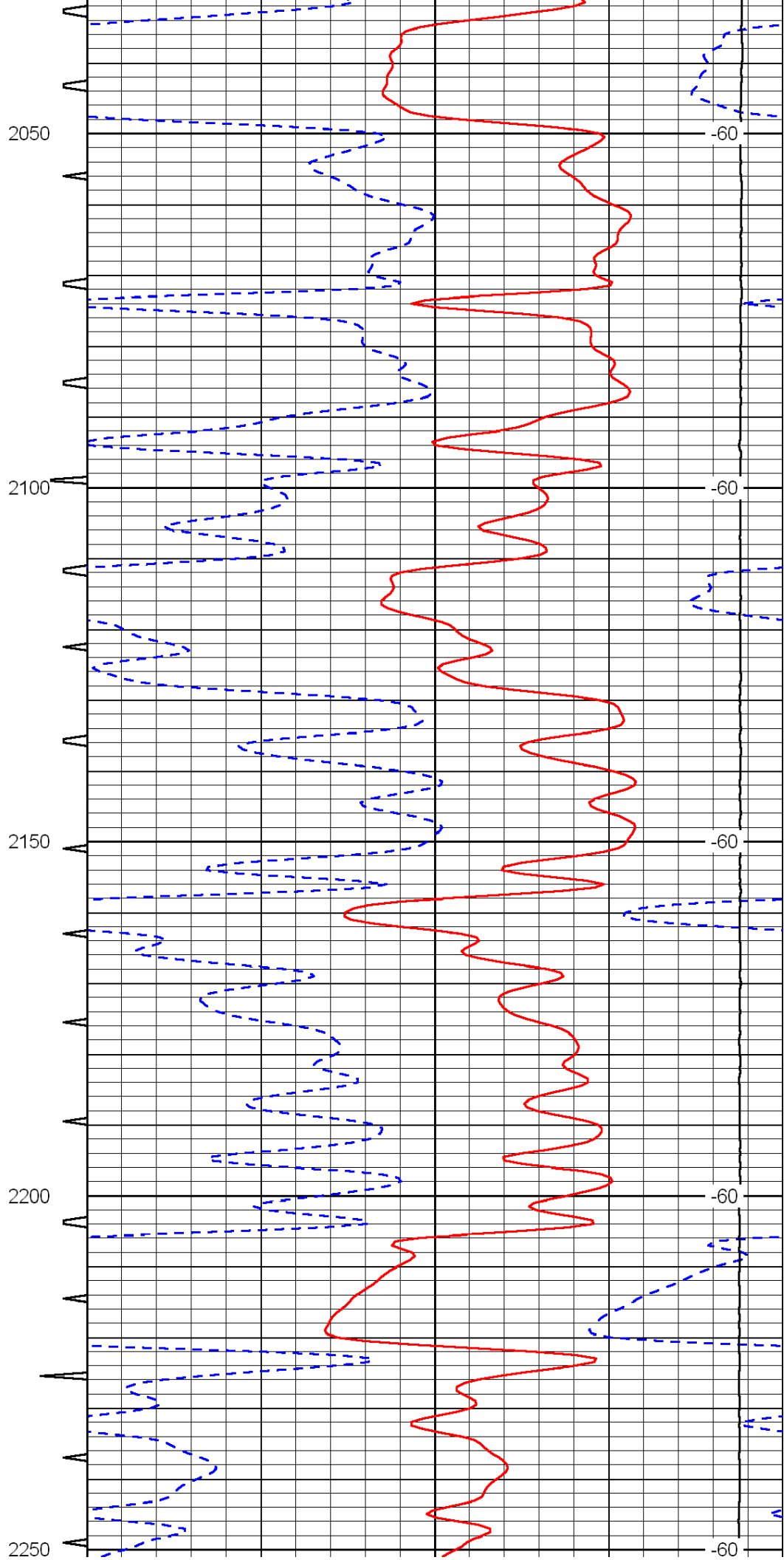
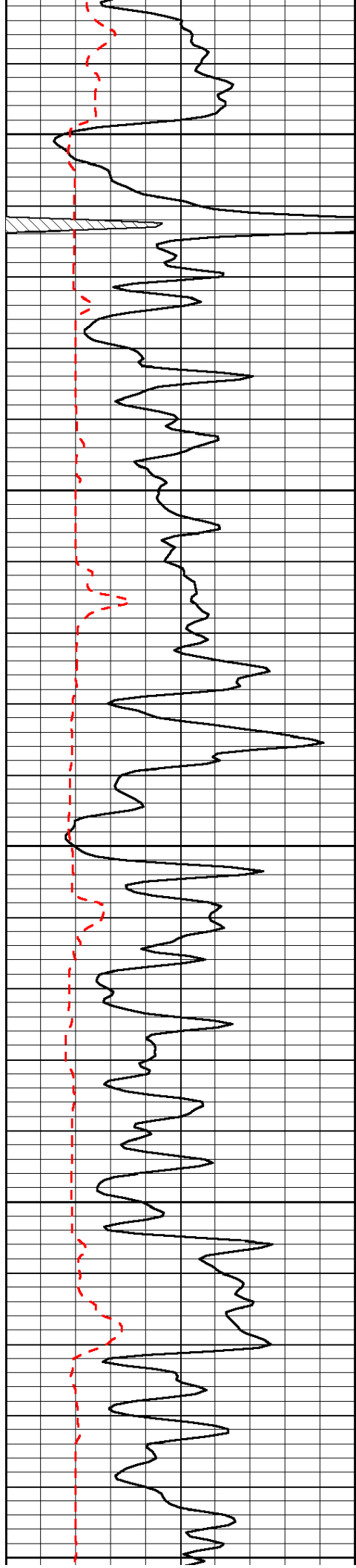


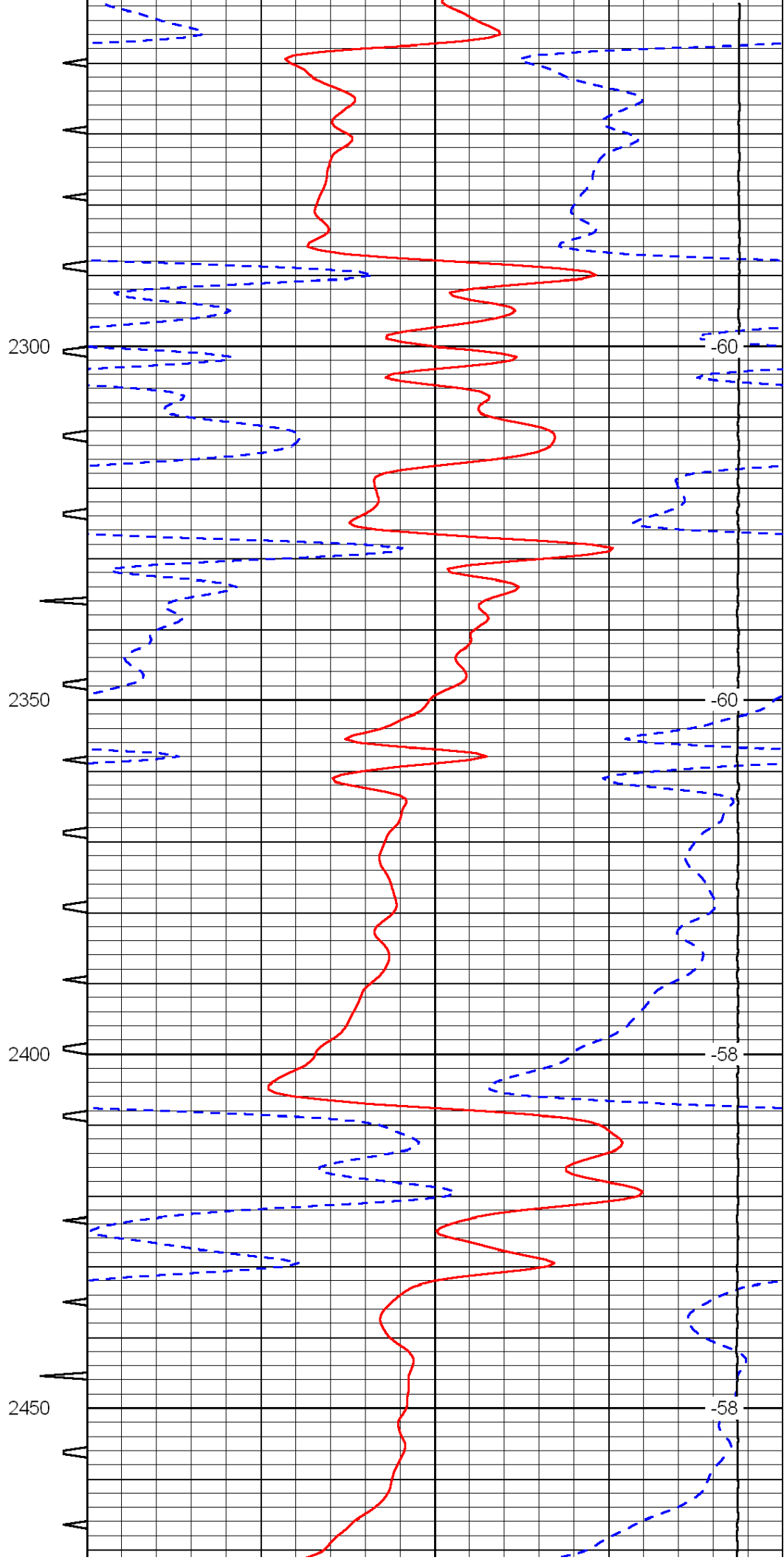
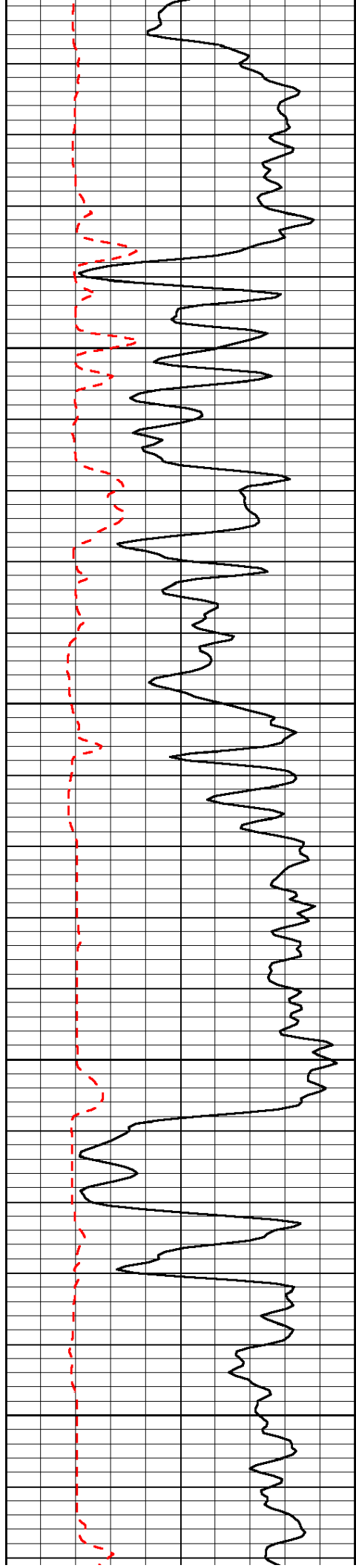


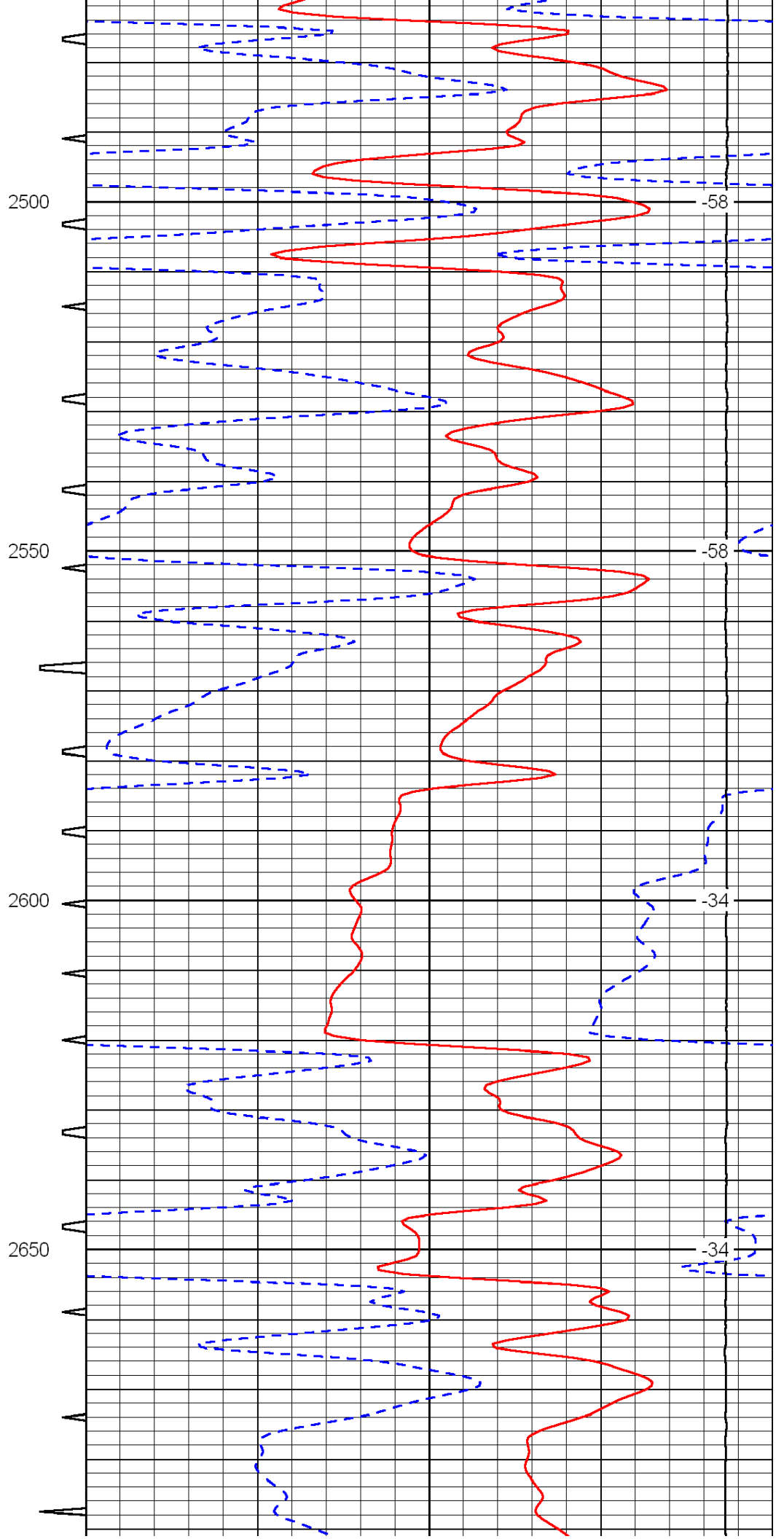
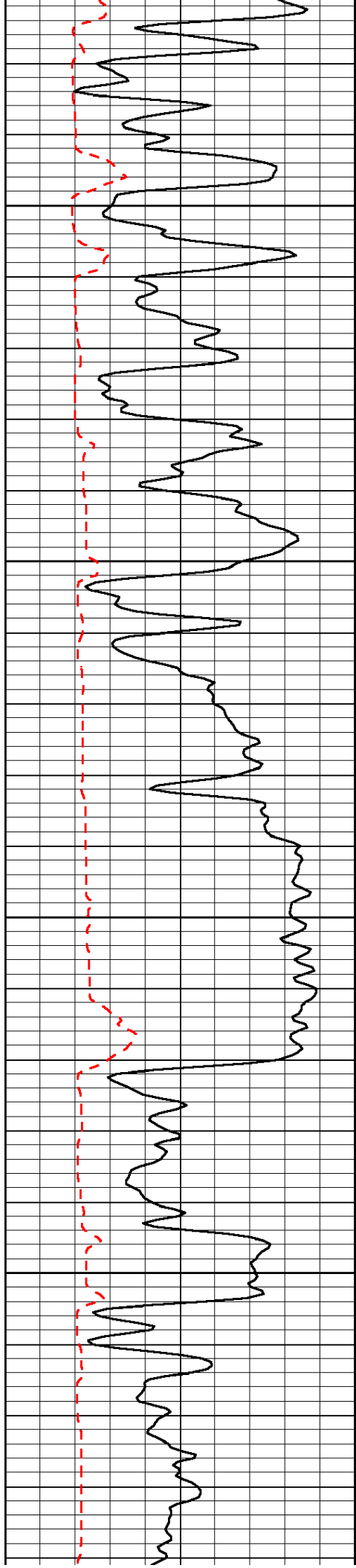


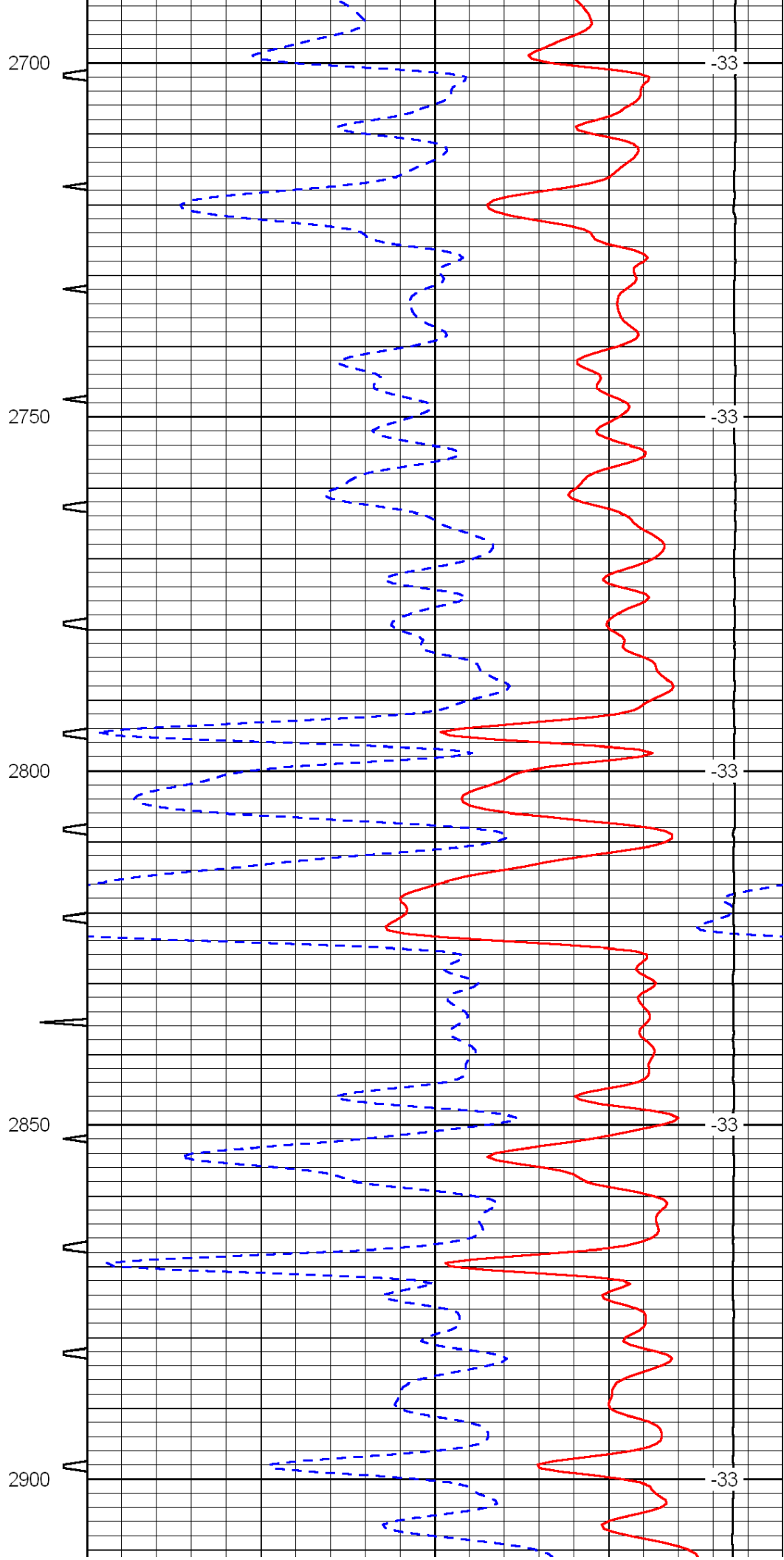
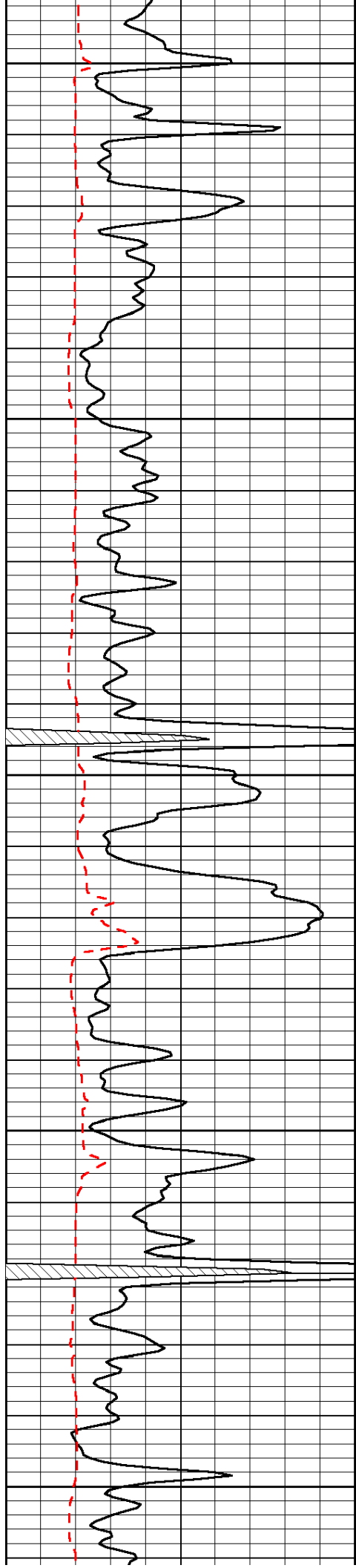


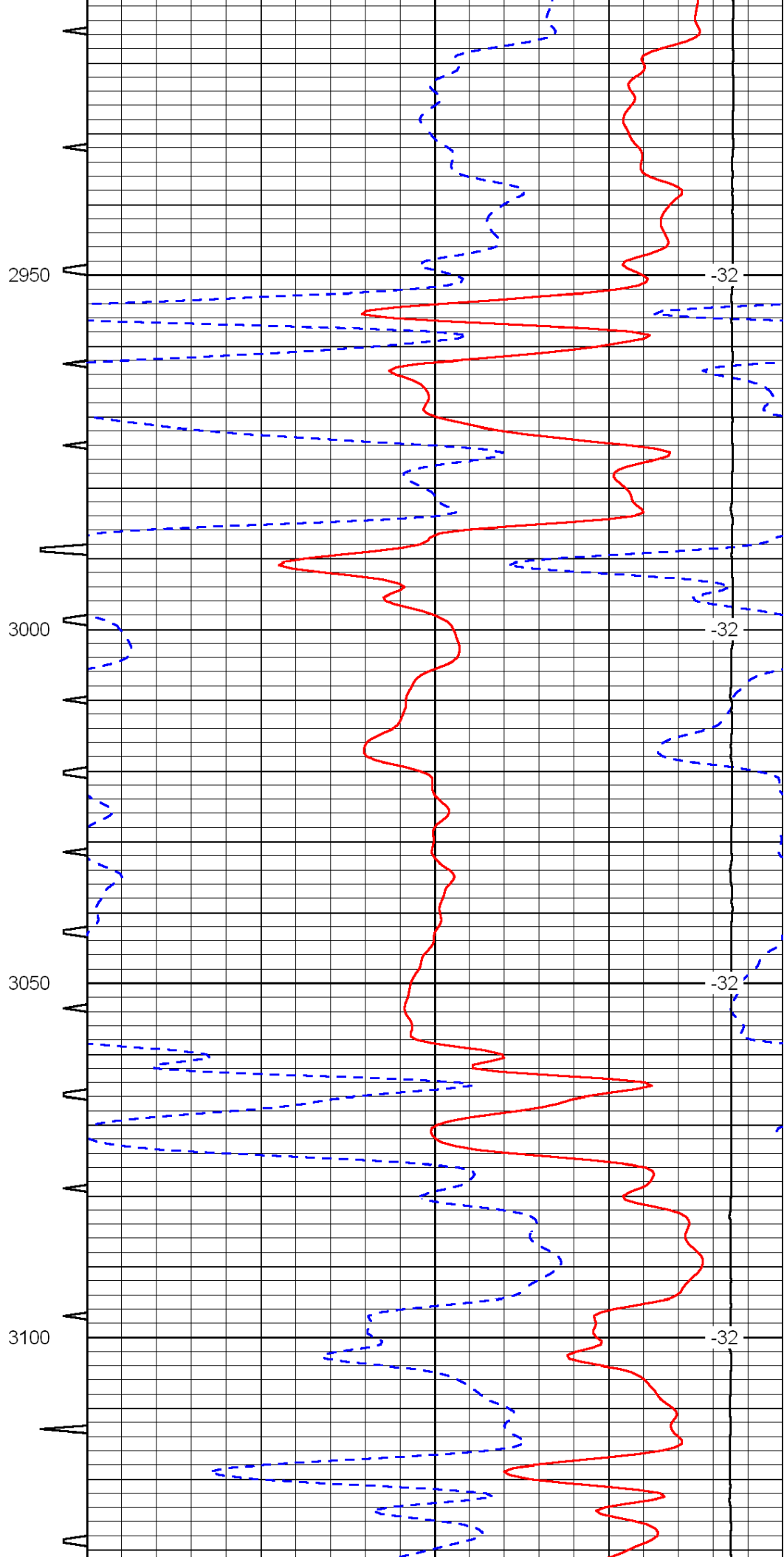
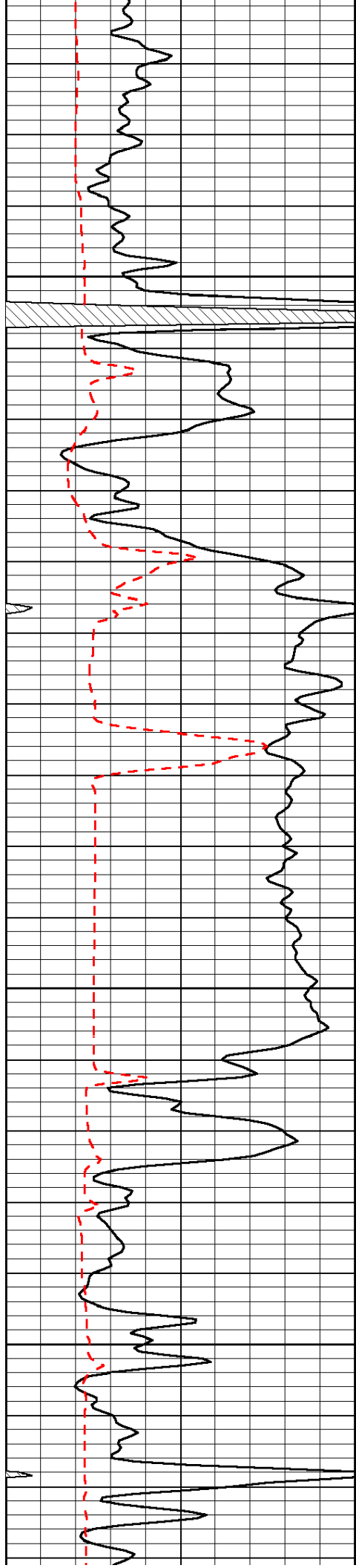


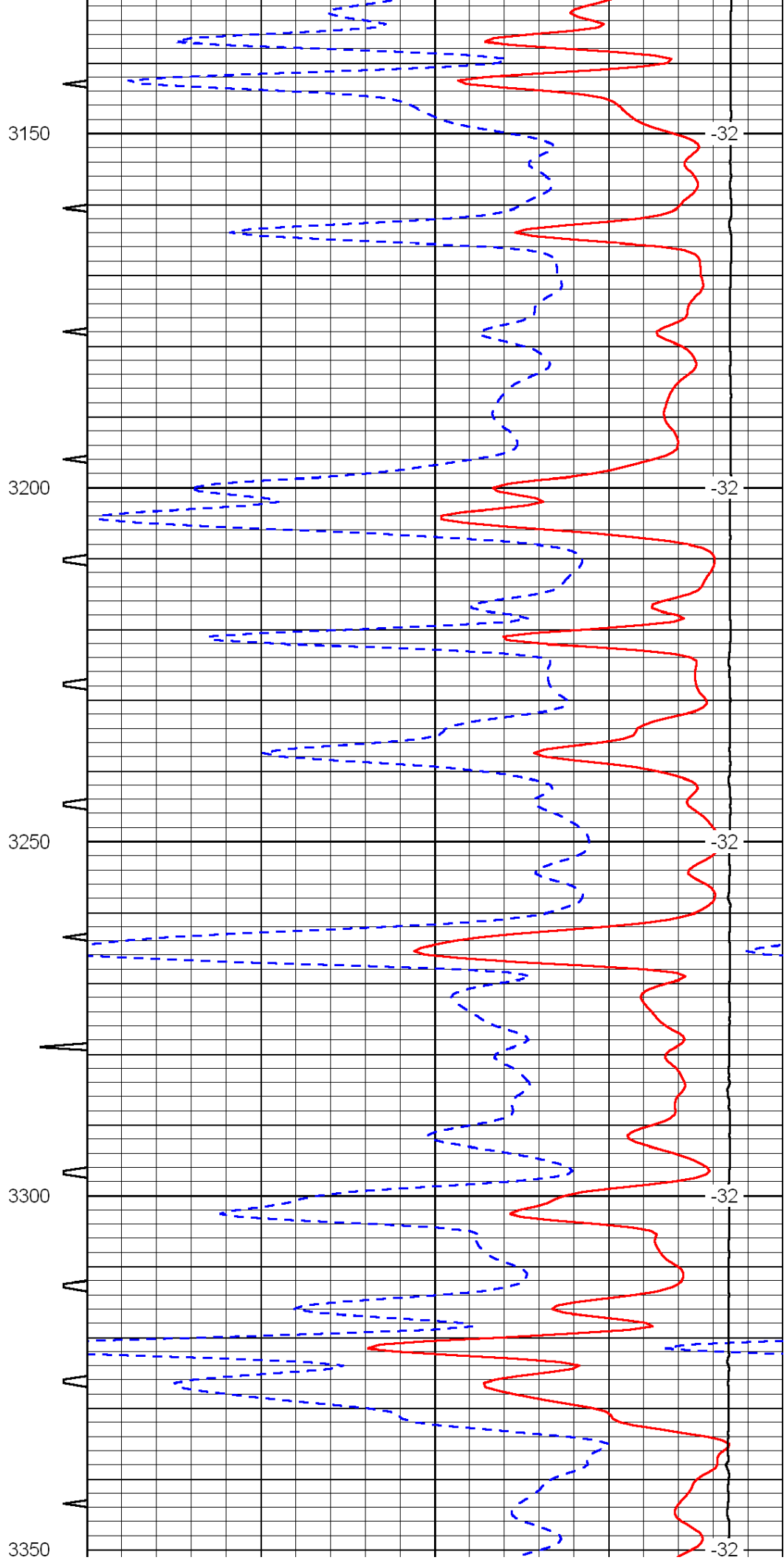
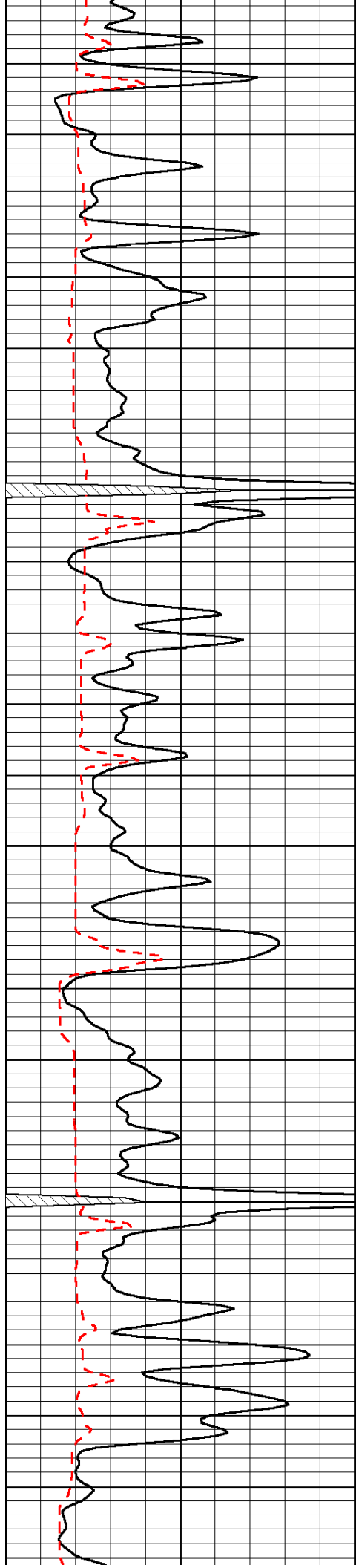


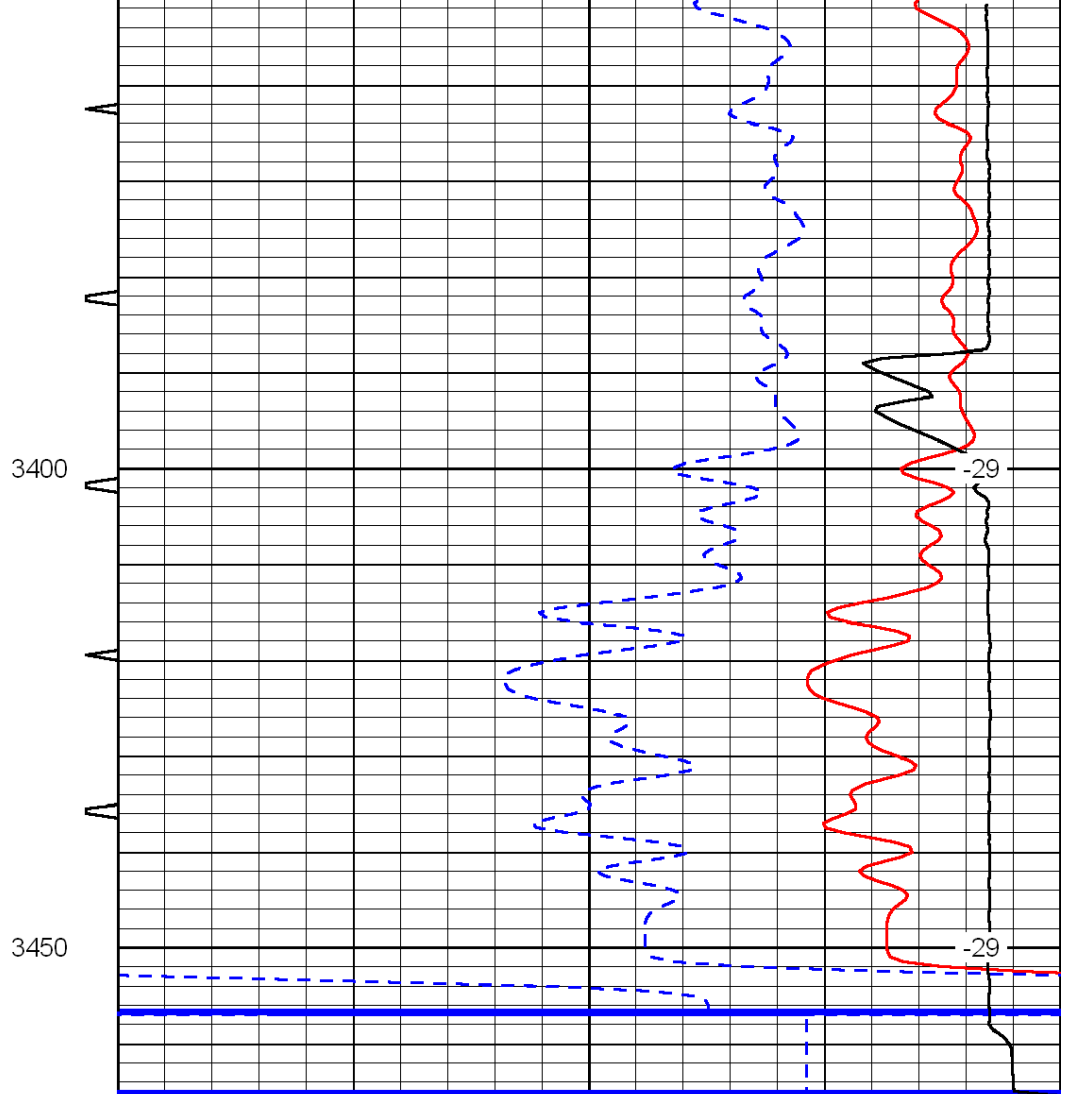
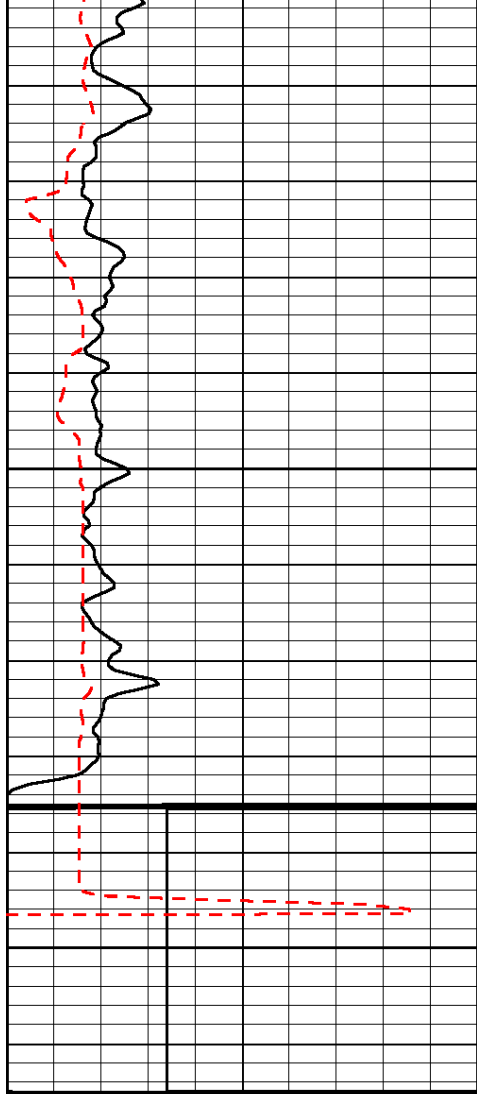












0	Gamma Ray	150	Sonic Int	140	Delta Time (usec/ft)	40
150	Gamma Ray	300	5	0	SPOR	-10
6	Caliper (GAPI)	16		15000	LTEN (lb)	0
LSPD						