



DIGITAL LOG (785) 625-3858

Dual Induction Log

API No.	15-109-20977-00-00	
Company	Brito Oil Company, Inc.	
Well	Fairleigh "C" #1-12	
Field	Wildcat	
County	Logan	State
		Kansas
Location	NE NE SE SW 1115' FSL / 2410' FWL	
Sec: 12	Twp: 15S	Rge: 33W
Permanent Datum	Ground Level	Elevation 2727
Log Measured From	Kelly Bushing	5 Ft. Above Perm. Datum
Drilling Measured From	Kelly Bushing	
		Other Services CNL / CDL MEL
		Elevation K.B. 2732 D.F. 2727 G.L. 2727

Date	3/24/2011
Run Number	One
Depth Driller	4430
Depth Logger	4429
Bottom Logged Interval	4428
Top Log Interval	200
Casing Driller	8.625 @ 219
Casing Logger	214
Bit Size	7.875
Type Fluid in Hole	Chemical
Salinity, ppm CL	4500
Density / Viscosity	9.1 57
pH / Fluid Loss	9.5 8.8
Source of Sample	Flowline
Rm @ Meas. Temp	0.70 @ 60
Rmf @ Meas. Temp	0.53 @ 60
Rmc @ Meas. Temp	0.95 @ 60
Source of Rmf / Rmc	Charts
Rm @ BHT	0.35 @ 120
Operating Rig Time	4 Hours
Max Rec. Temp. F	120
Equipment Number	15
Location	Hays
Recorded By	R. Barnhart
Witnessed By	Tom Funk

<<< Fold Here >>>

All interpretations are opinions based on inferences from electrical or other measurements and we cannot and do not guarantee the accuracy or correctness of any interpretation, and we shall not, except in the case of gross or willful negligence on our part, be liable or responsible for any loss, costs, damages, or expenses incurred or sustained by anyone resulting from any interpretation made by any of our officers, agents or employees. These interpretations are also subject to our general terms and conditions set out in our current Price Schedule.

Comments

Thank you for using Log-Tech, Inc.
 (785) 625-3858
 Oakley, KS:
 S past river to Gold Rd,
 5W, 2S, E into

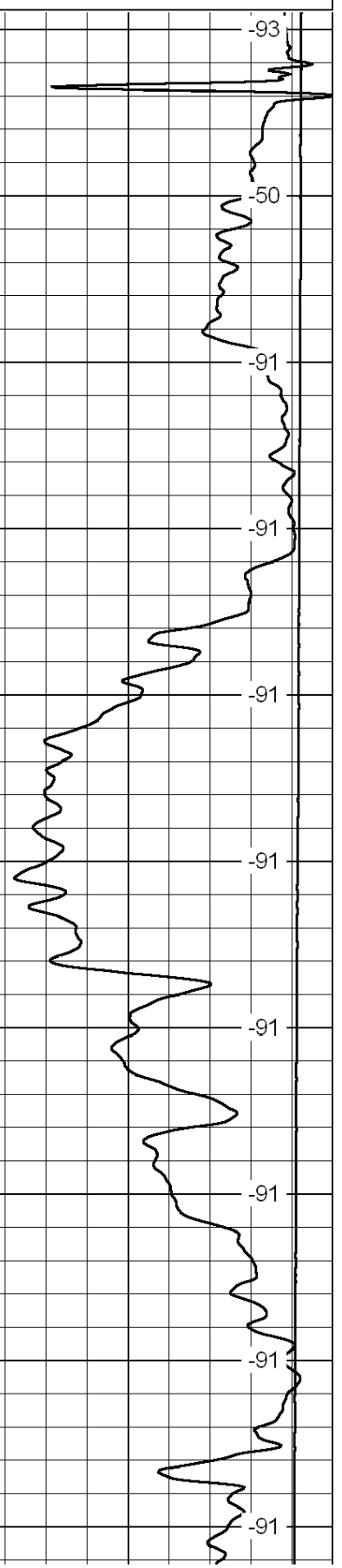
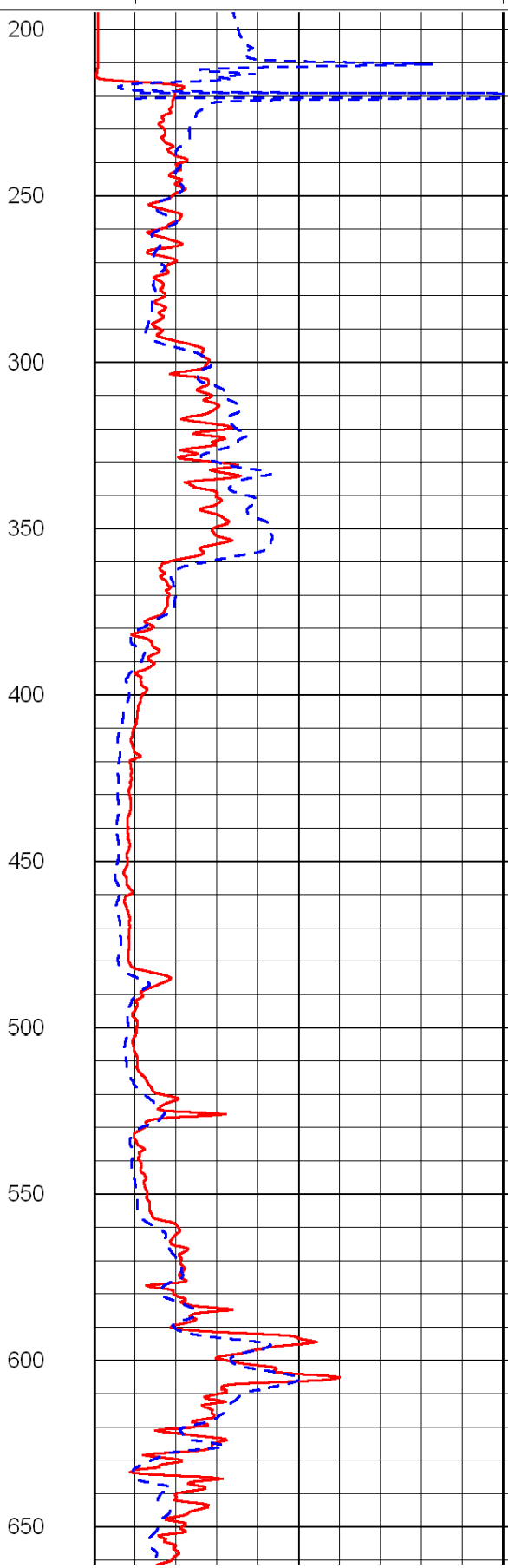
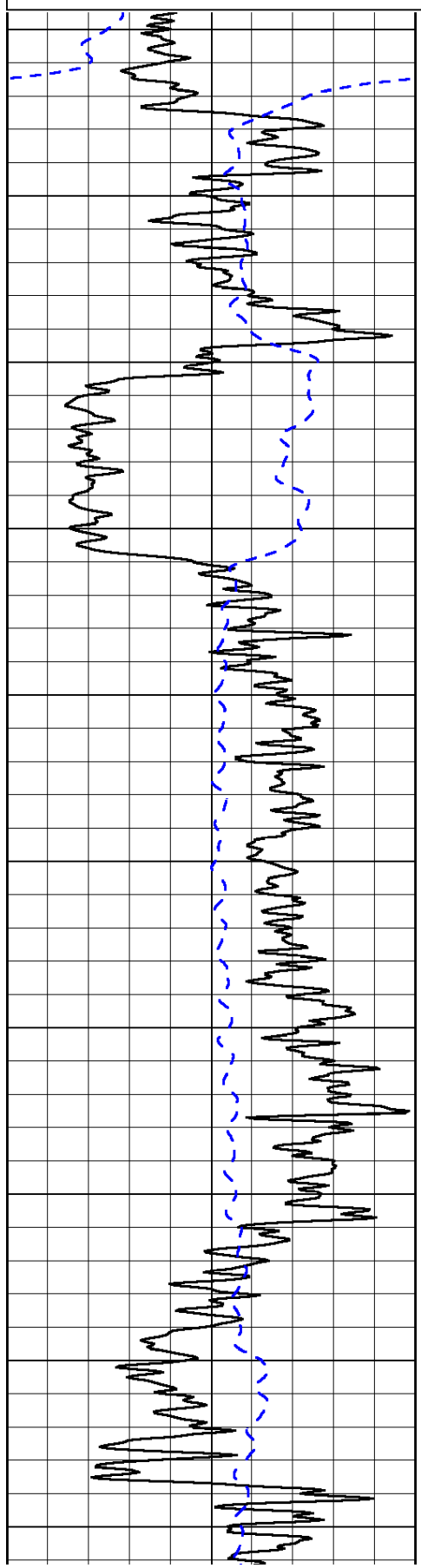
0	Gamma Ray	150
-200	SP (mV)	0

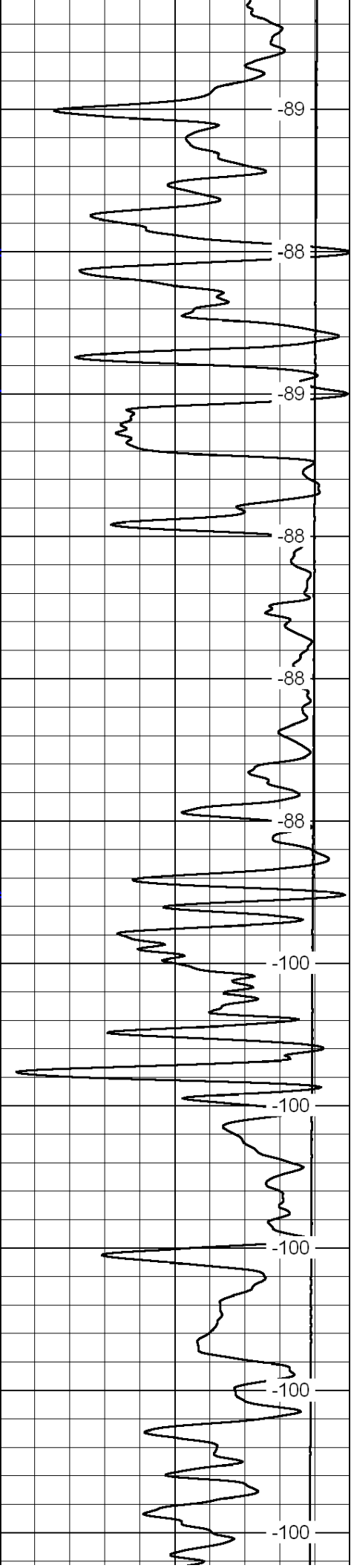
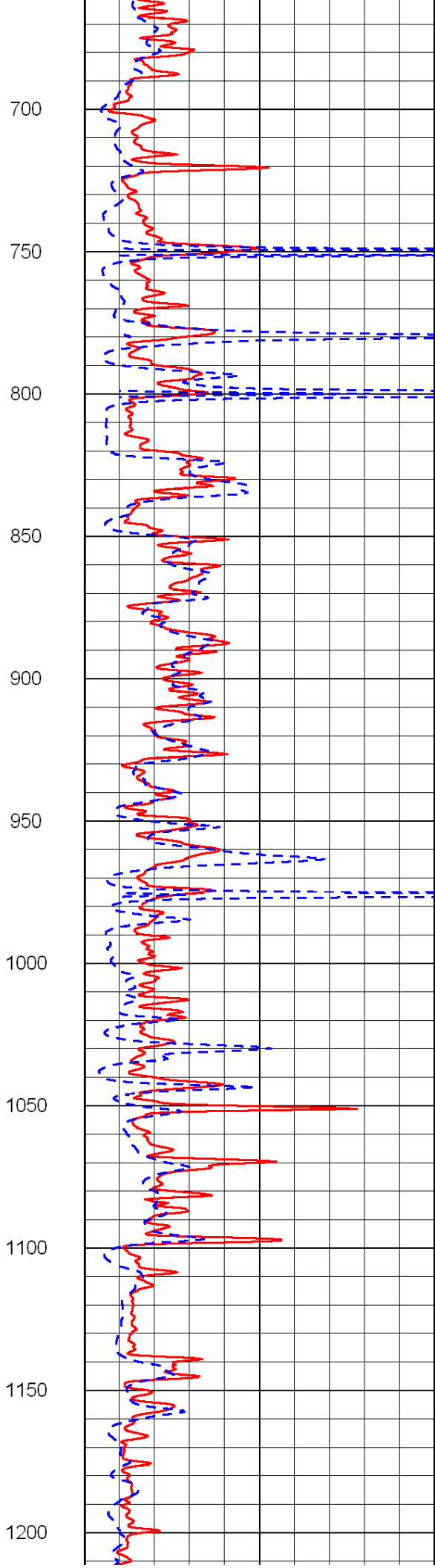
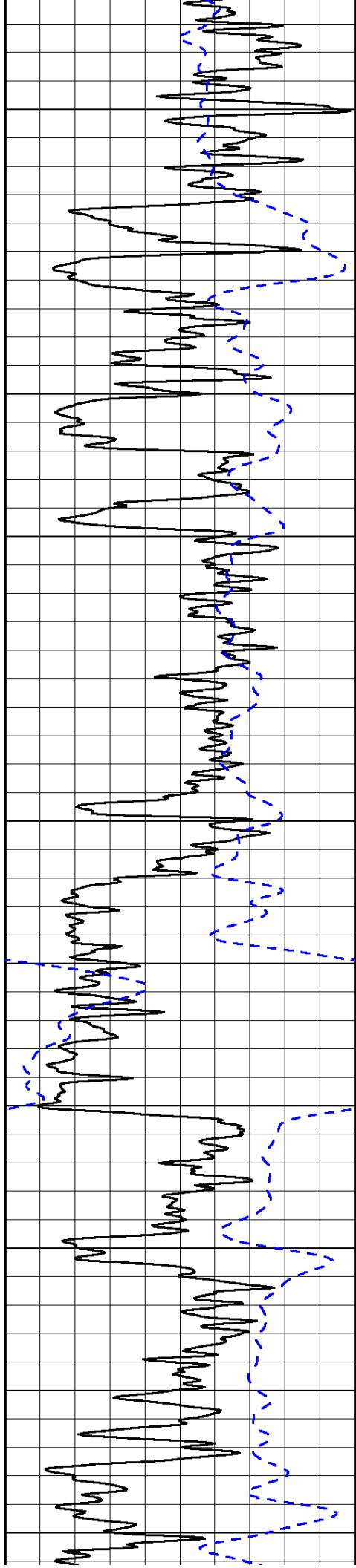
0	Shallow Resistivity	50
0	Deep Resistivity	50

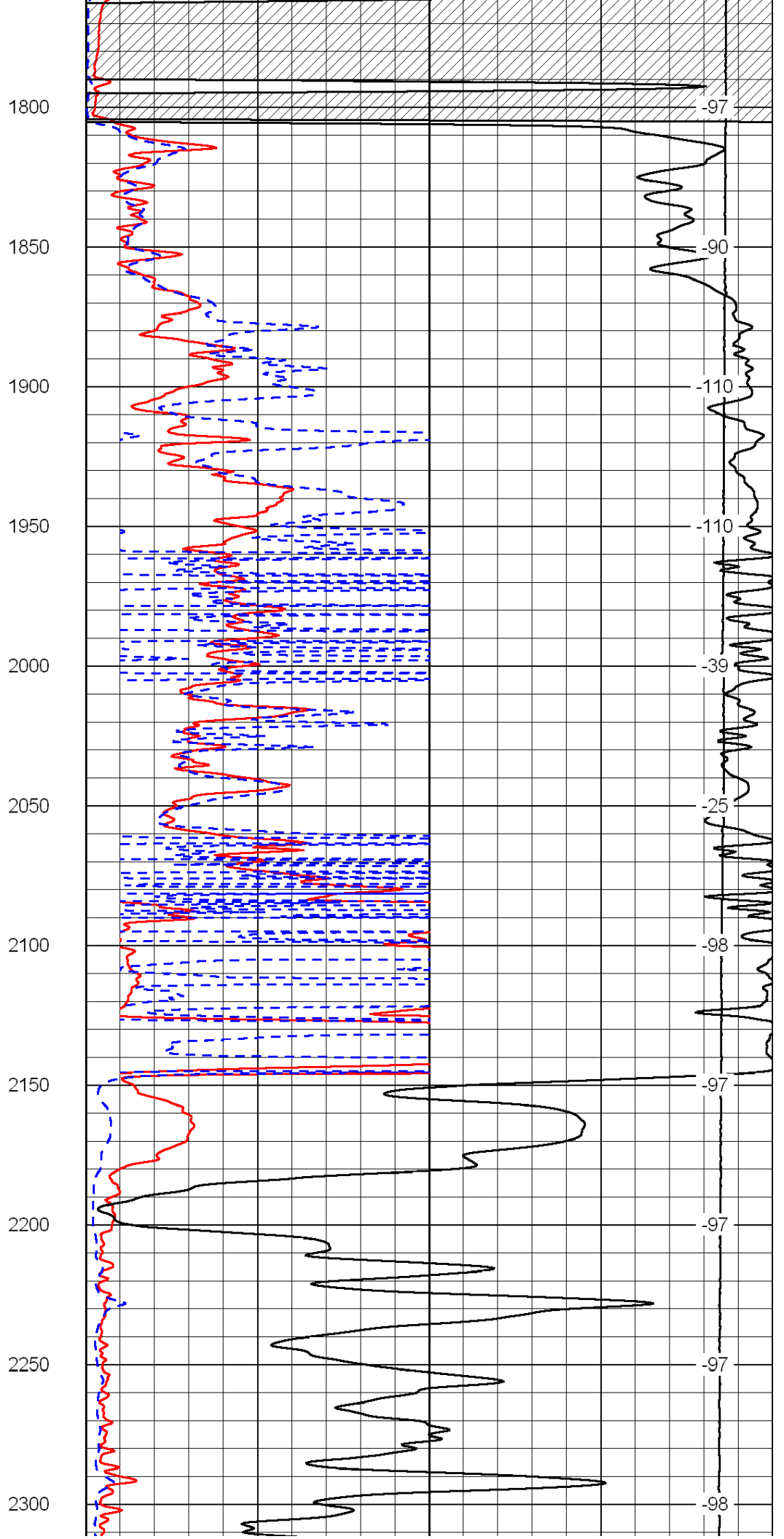
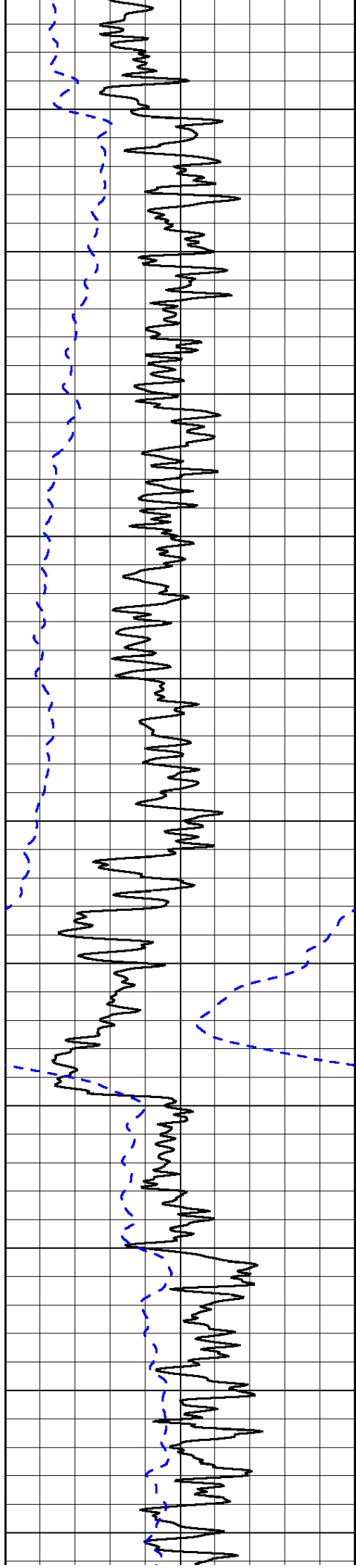
LSPD

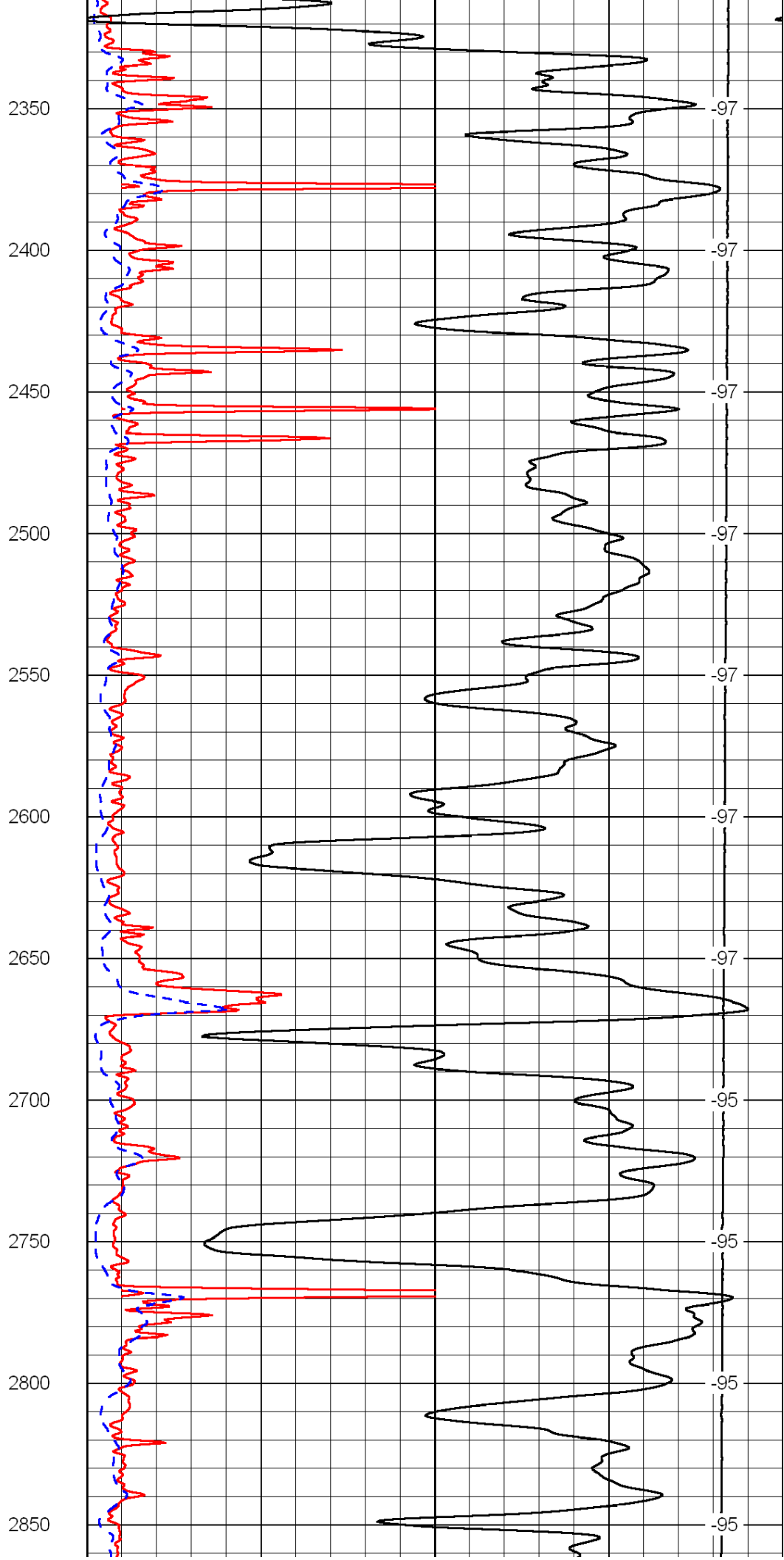
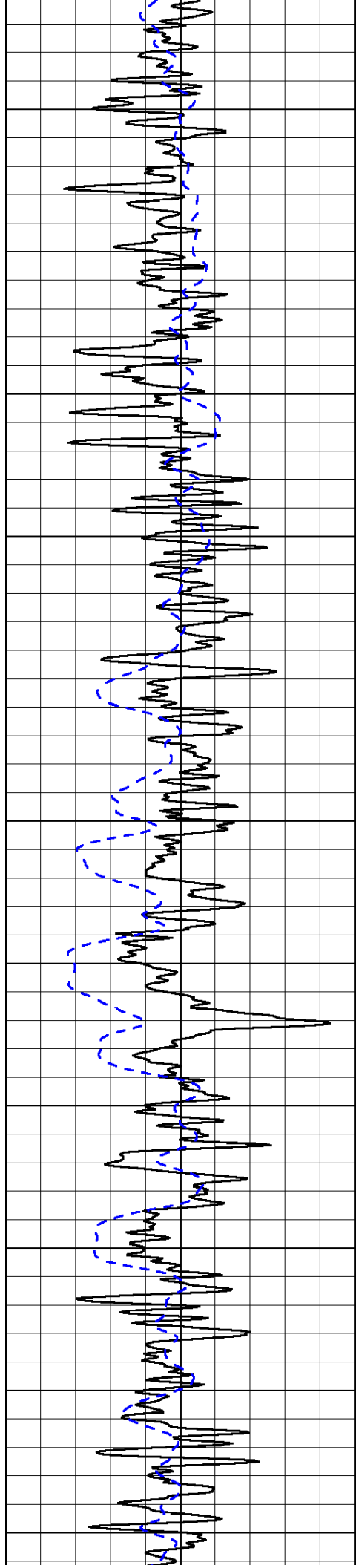
1000	Conductivity	0
15000	Line Tension	0

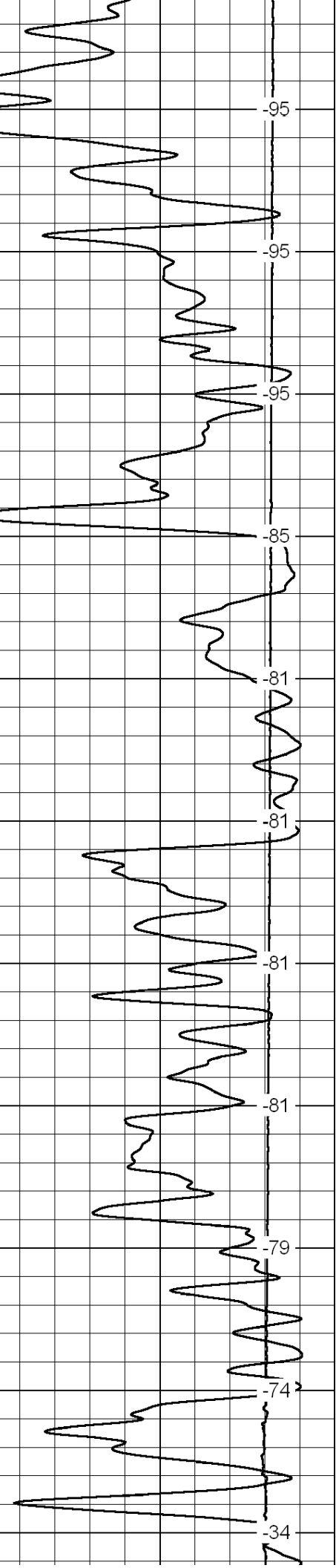
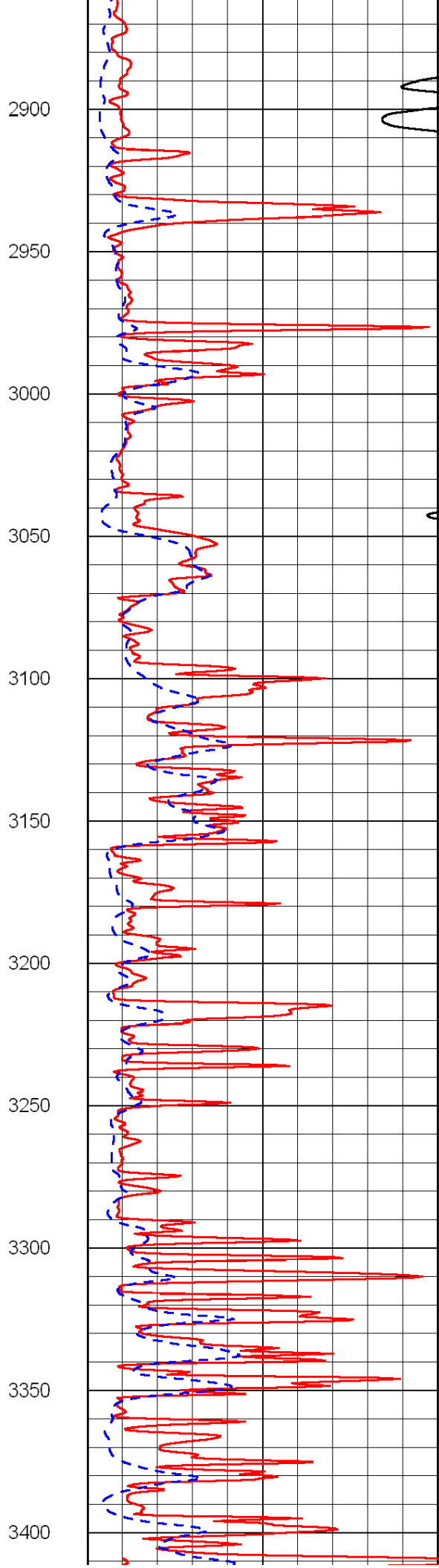
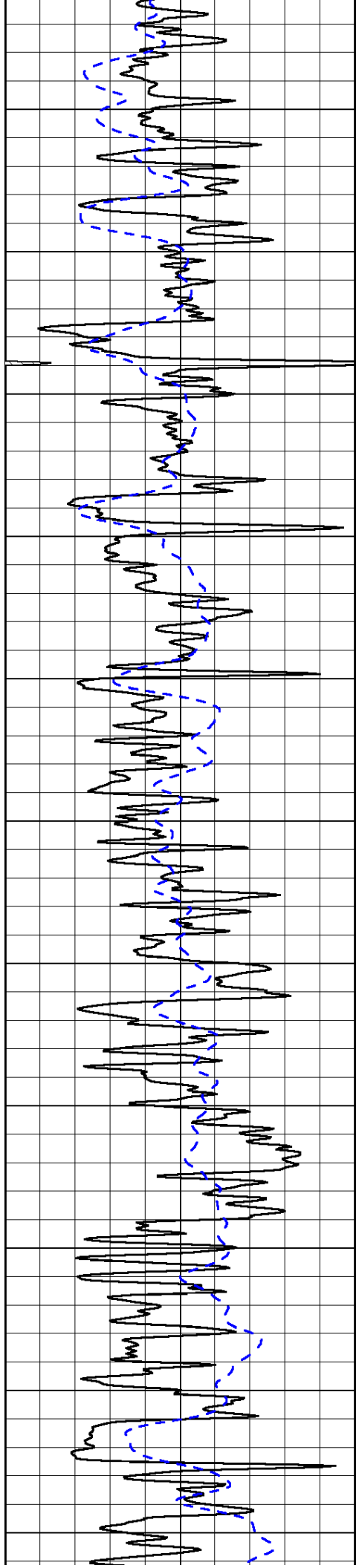
50	Shallow Resistivity	500
50	Deep Resistivity	500

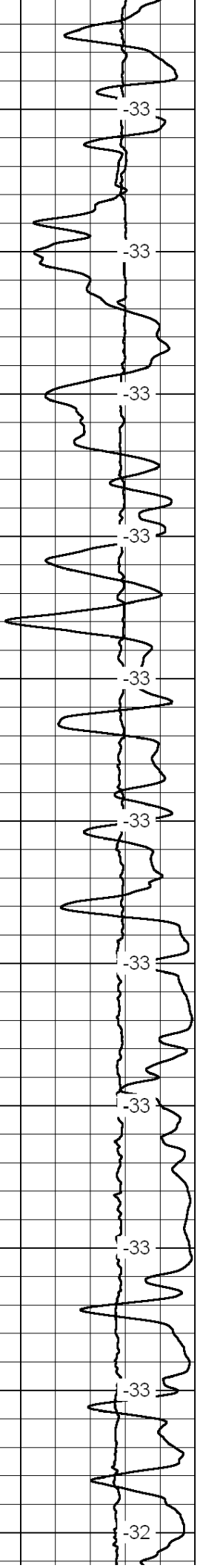
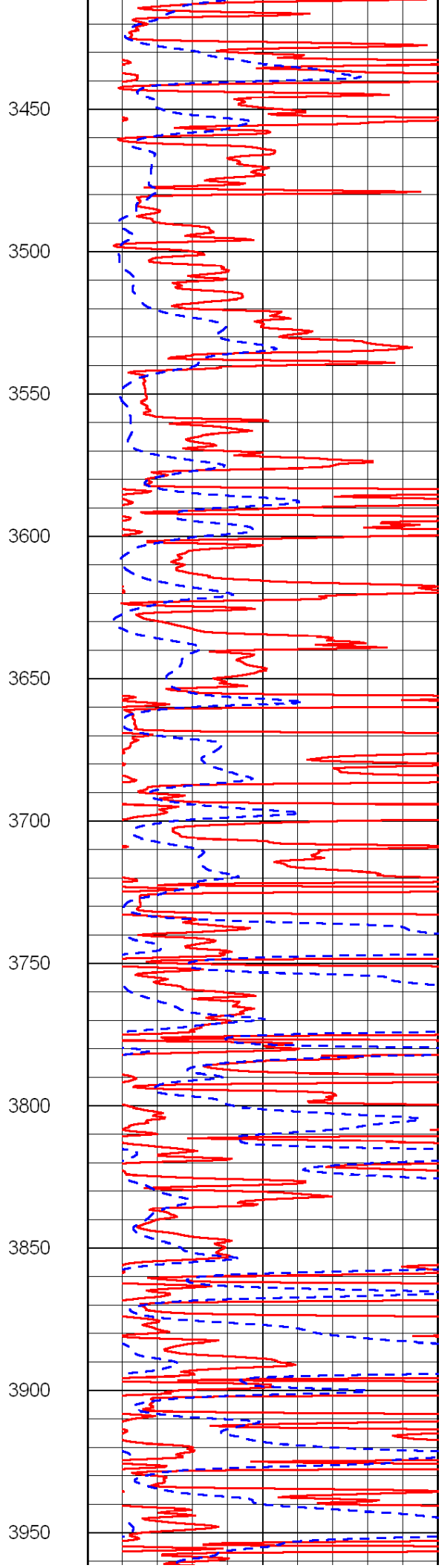
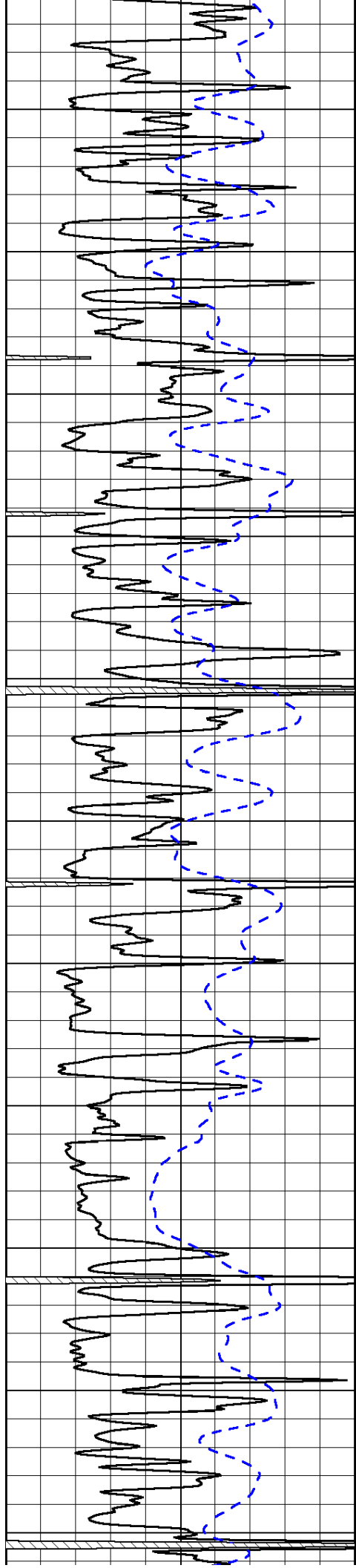






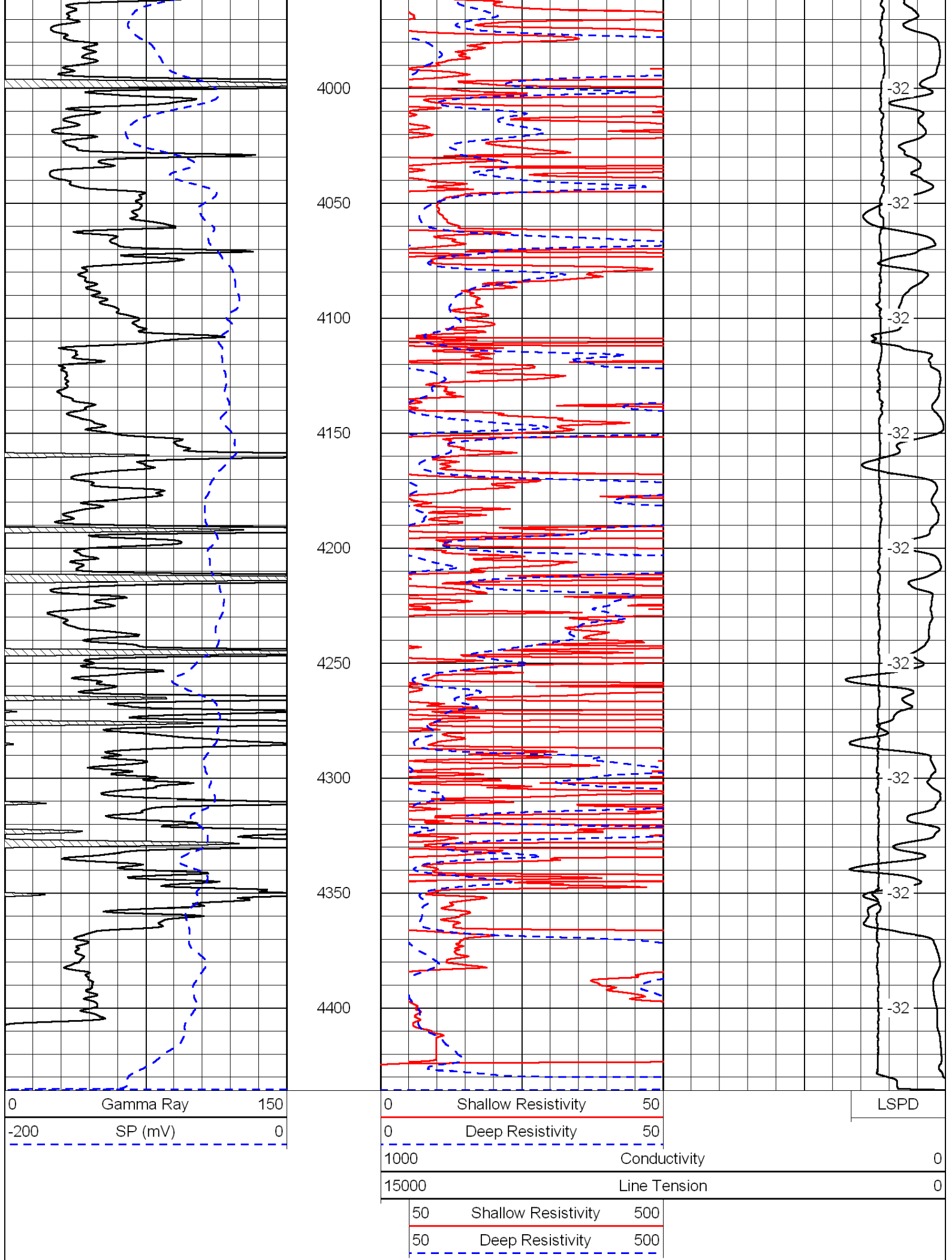






3450
3500
3550
3600
3650
3700
3750
3800
3850
3900
3950

-33
-33
-33
-33
-33
-33
-33
-33
-33
-33
-32

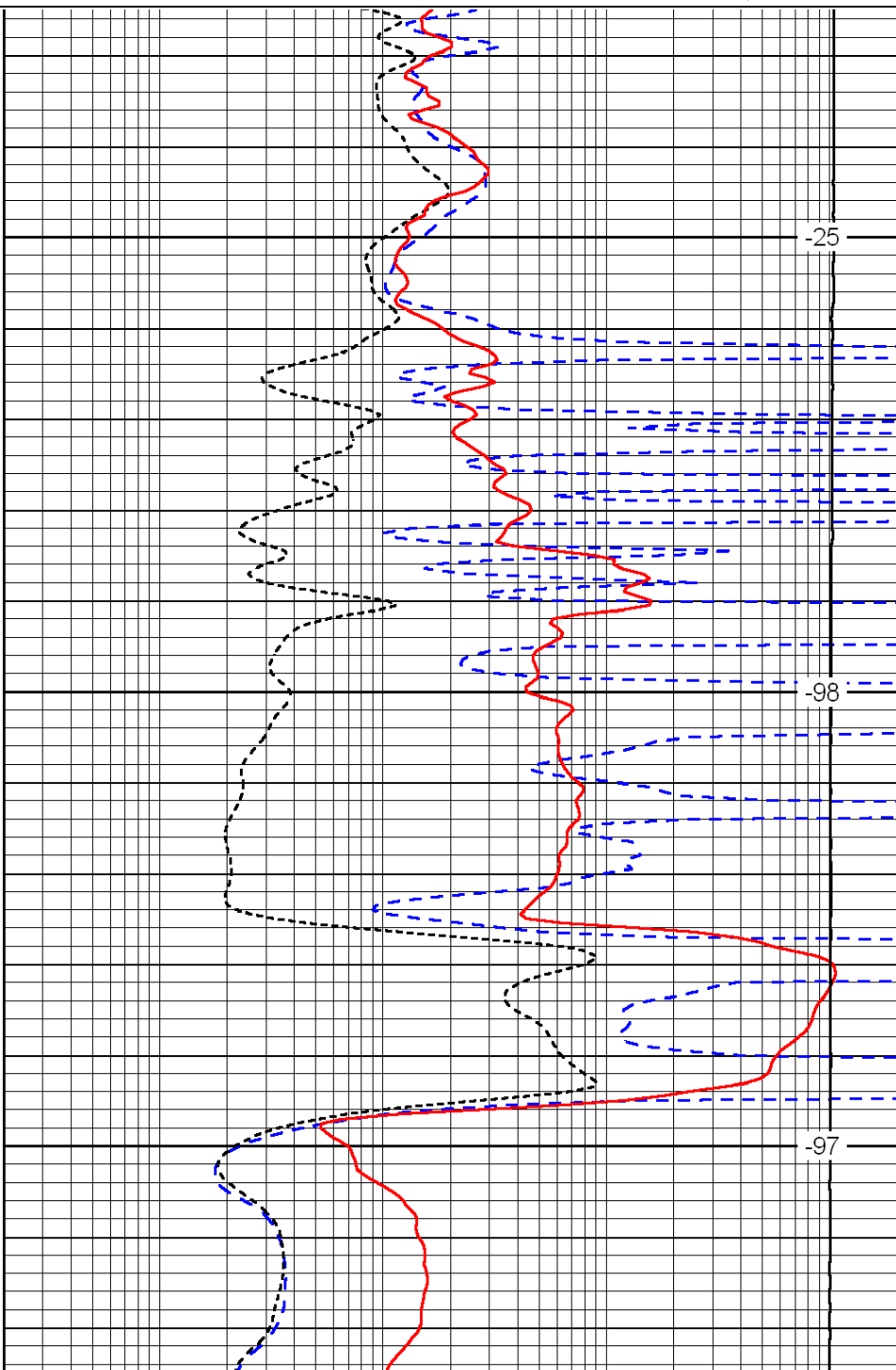
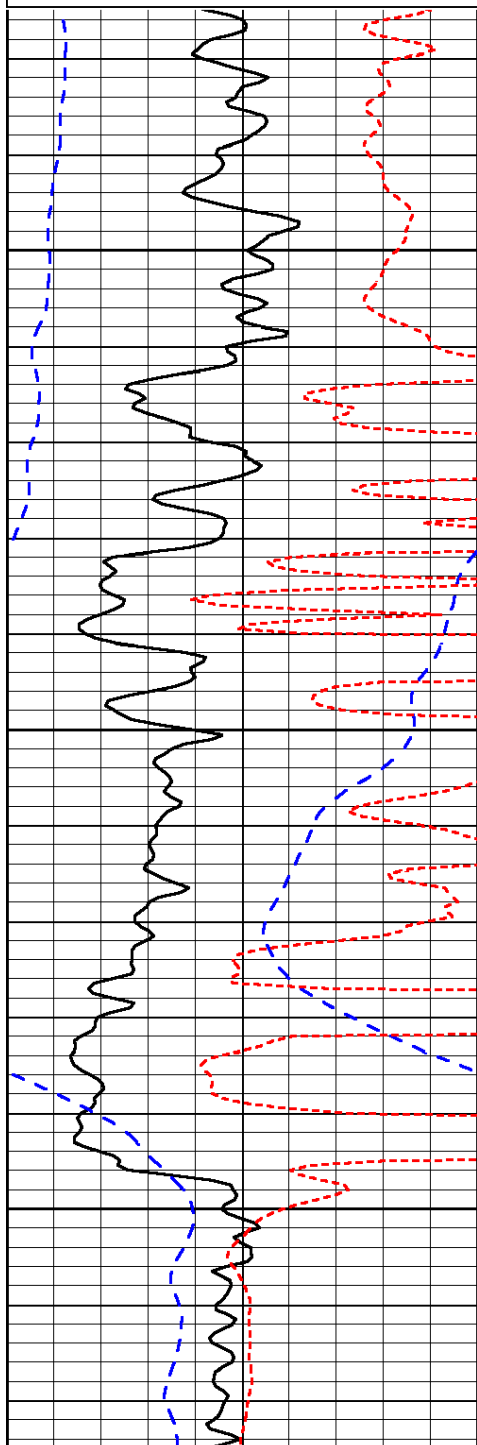


Database File: c:\warrior\data\brito_fairleigh c #1-12\britohd2.db
 Dataset Pathname: dil/brimain
 Presentation Format: dil
 Dataset Creation: Thu Mar 24 14:10:33 2011
 Charted by: Depth in Feet scaled 1:240

0	Gamma Ray	150
-200	SP (mV)	0
-160	Rxo / Rt	40

0.2	Deep Resistivity	2000
0.2	Medium Resistivity	2000
0.2	Shallow Resistivity	2000
15000	Line Tension	0

LSPD



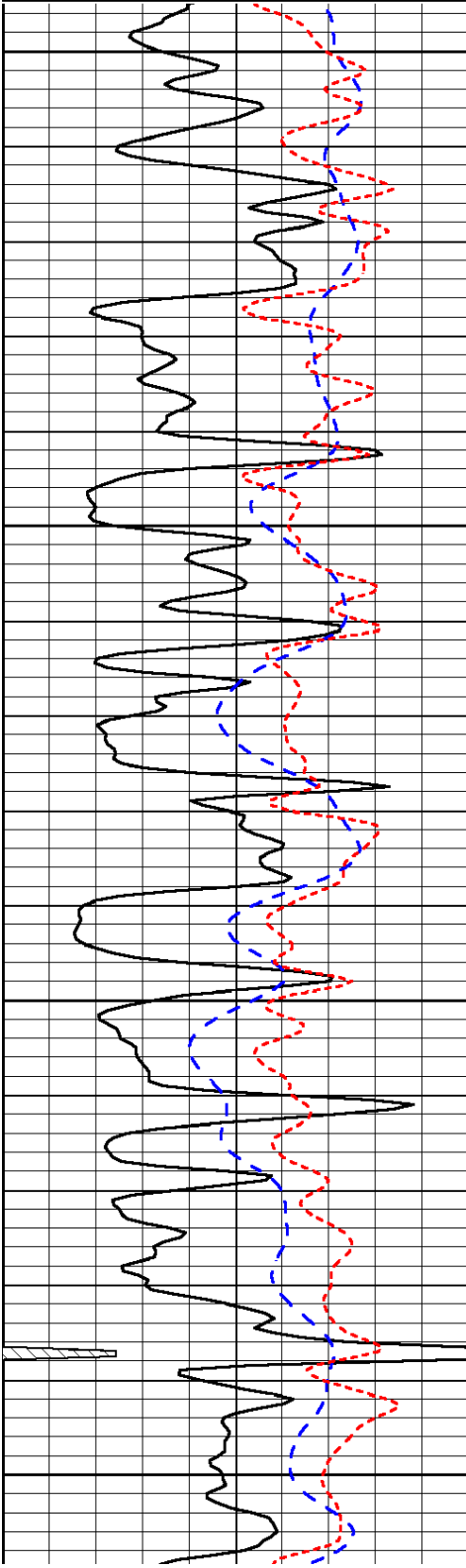
0	Gamma Ray	150
-200	SP (mV)	0
-160	Rxo / Rt	40

0.2	Deep Resistivity	2000
0.2	Medium Resistivity	2000
0.2	Shallow Resistivity	2000
15000	Line Tension	0

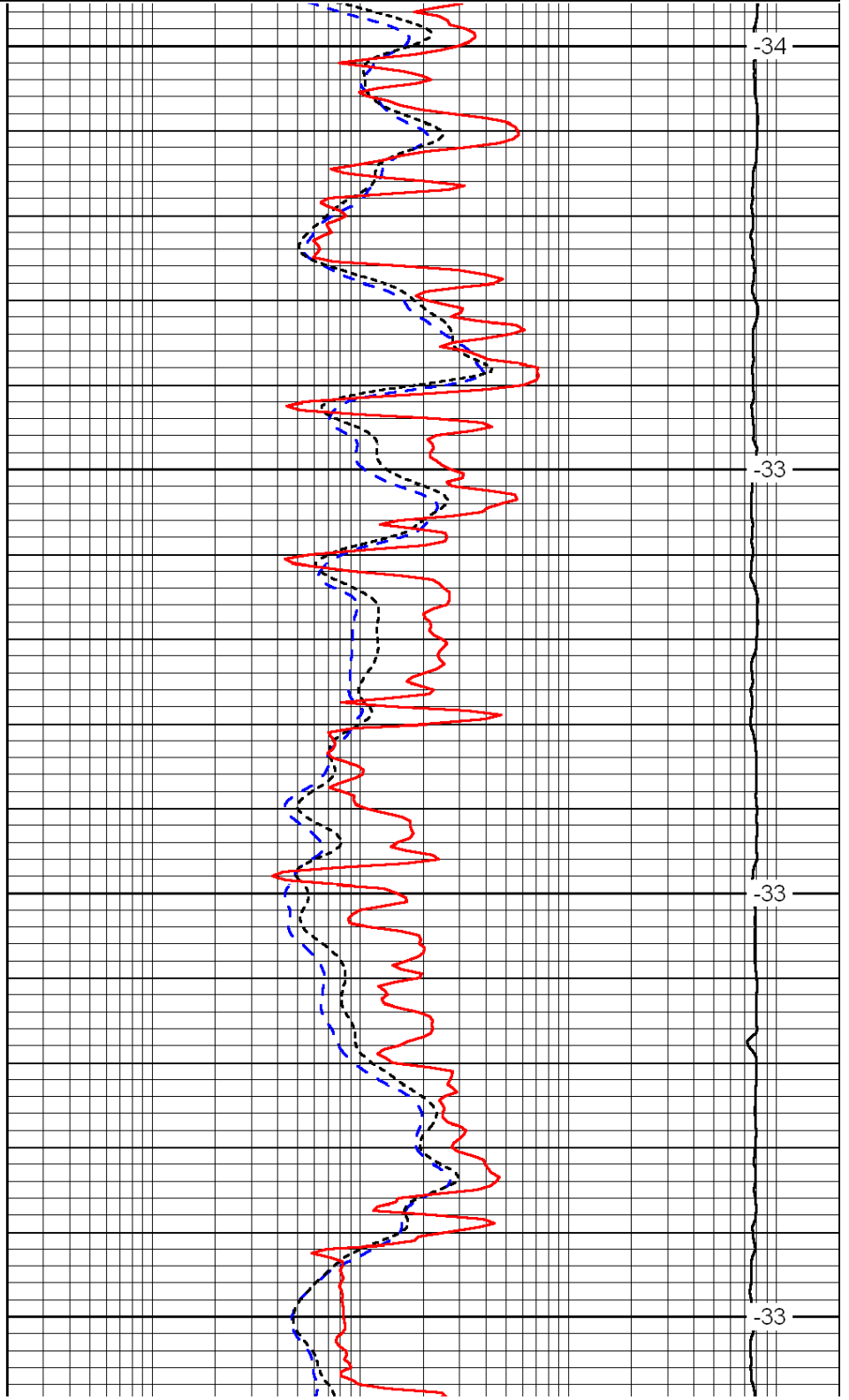
Database File: c:\warrior\data\brito_fairleigh c #1-12\britohd2.db
Dataset Pathname: dil/brimain
Presentation Format: dil
Dataset Creation: Thu Mar 24 14:10:33 2011
Charted by: Depth in Feet scaled 1:240

0	Gamma Ray	150
-200	SP (mV)	0
-160	Rxo / Rt	40

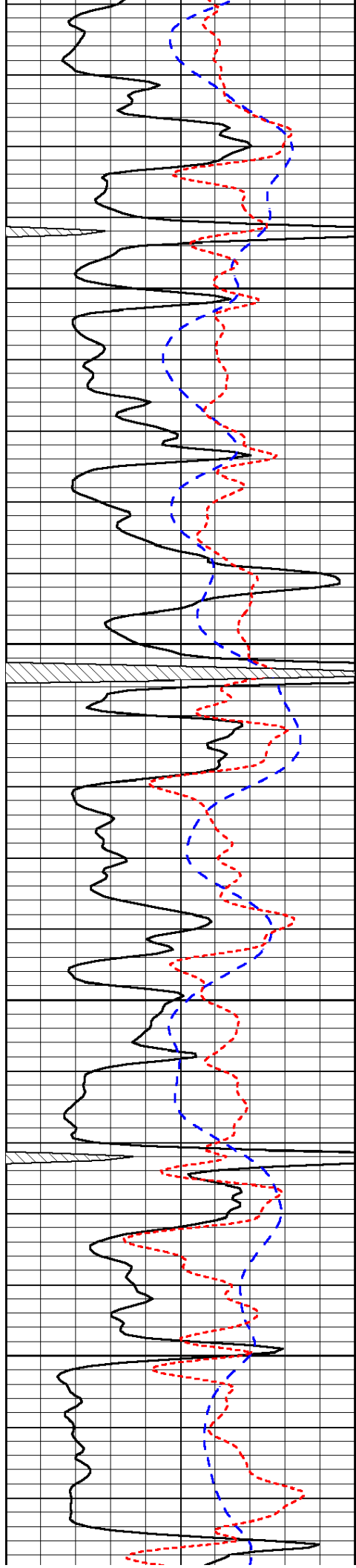
0.2	Deep Resistivity	2000
0.2	Medium Resistivity	2000
0.2	Shallow Resistivity	2000
15000	Line Tension	0



3400
3450
3500
3550



-34
-33
-33
-33

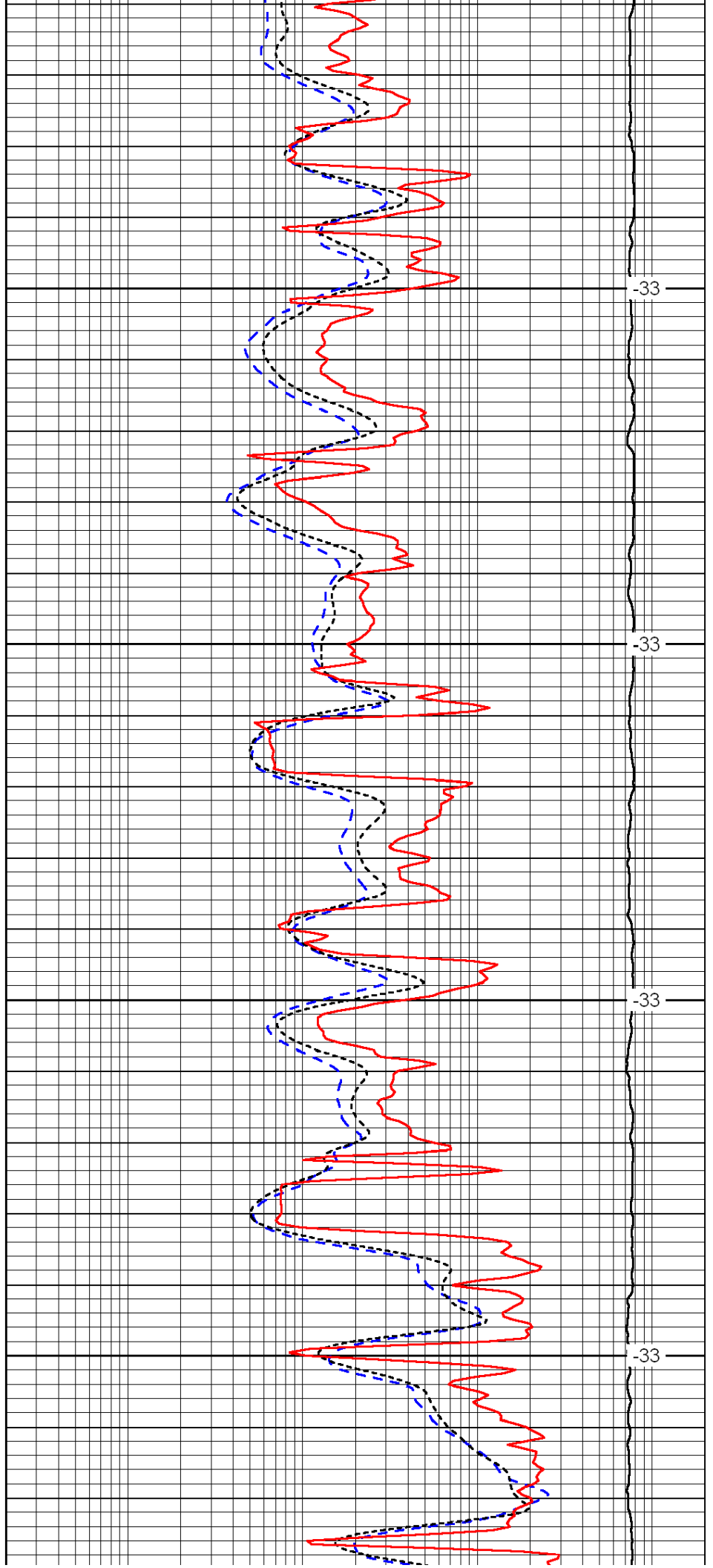


3600

3650

3700

3750

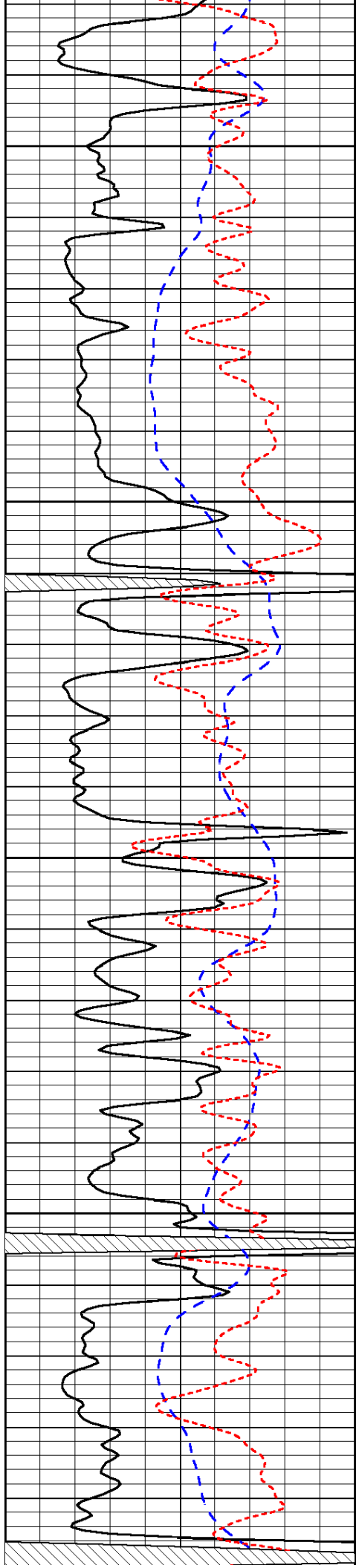


-33

-33

-33

-33



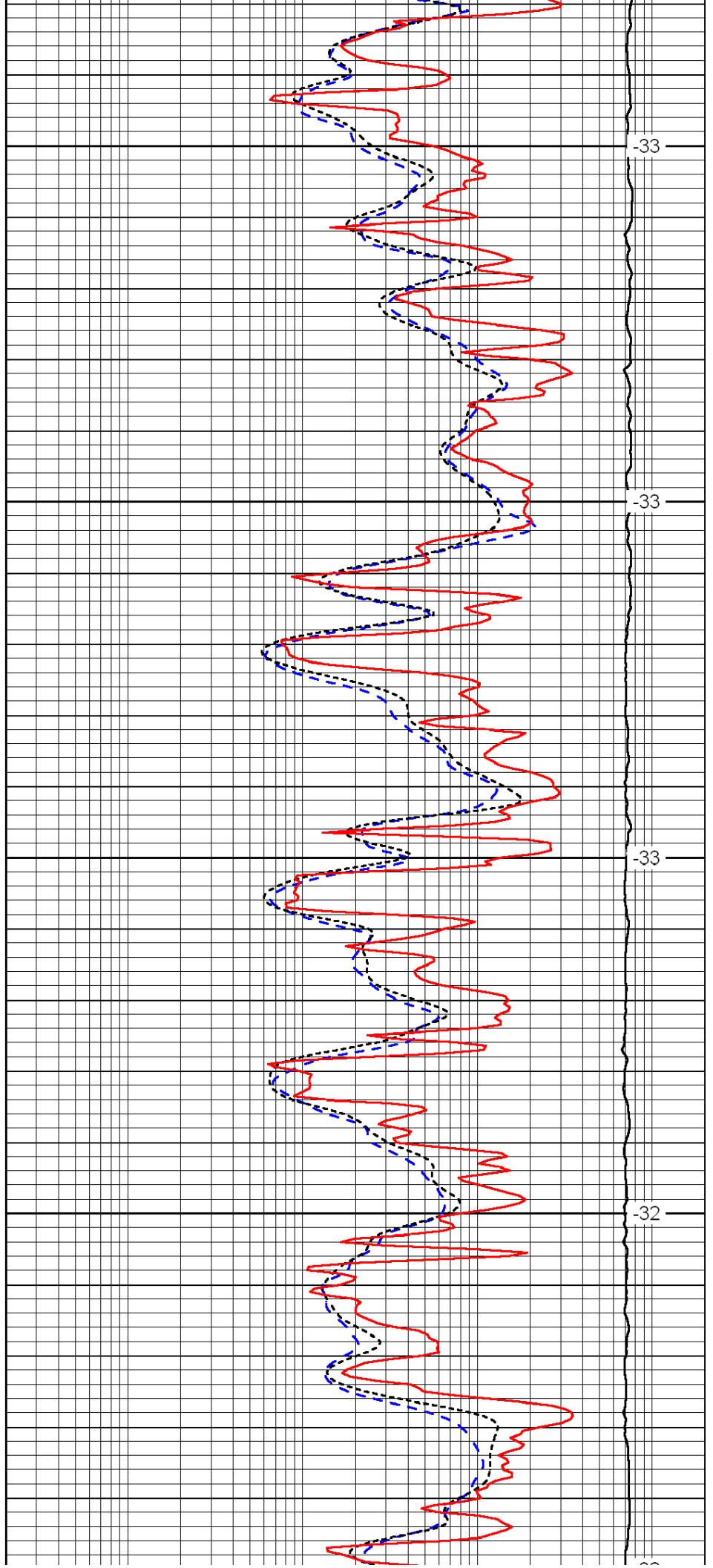
3800

3850

3900

3950

4000



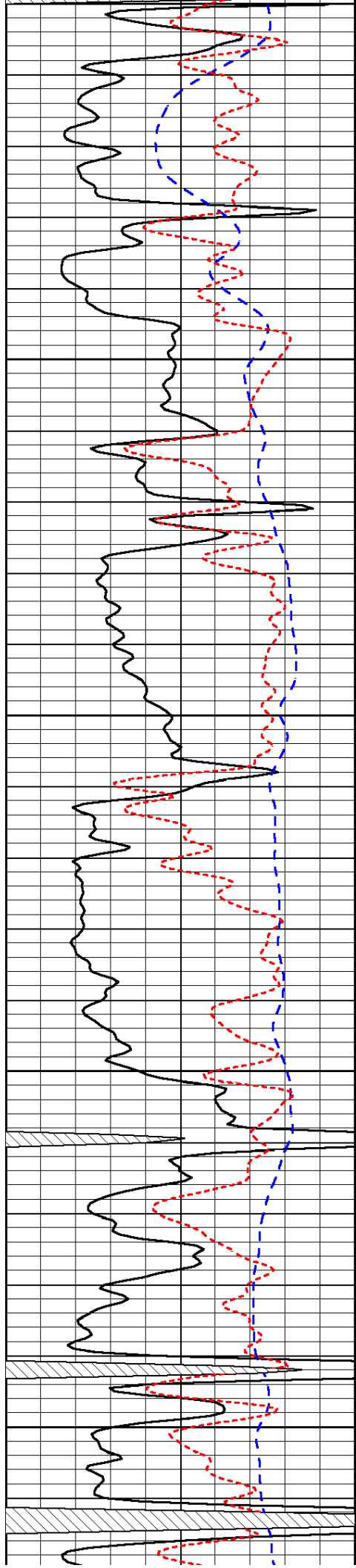
-33

-33

-33

-32

-32



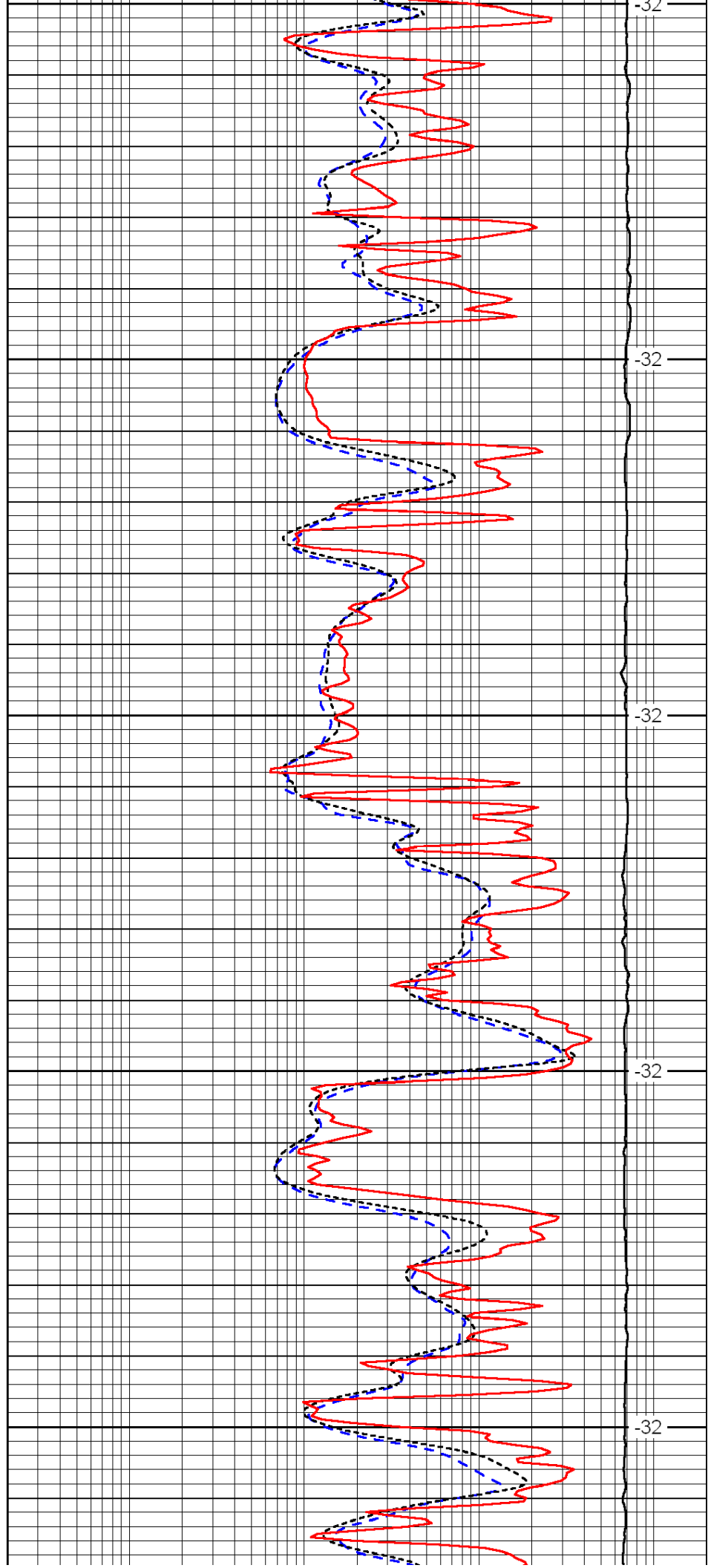
4000

4050

4100

4150

4200



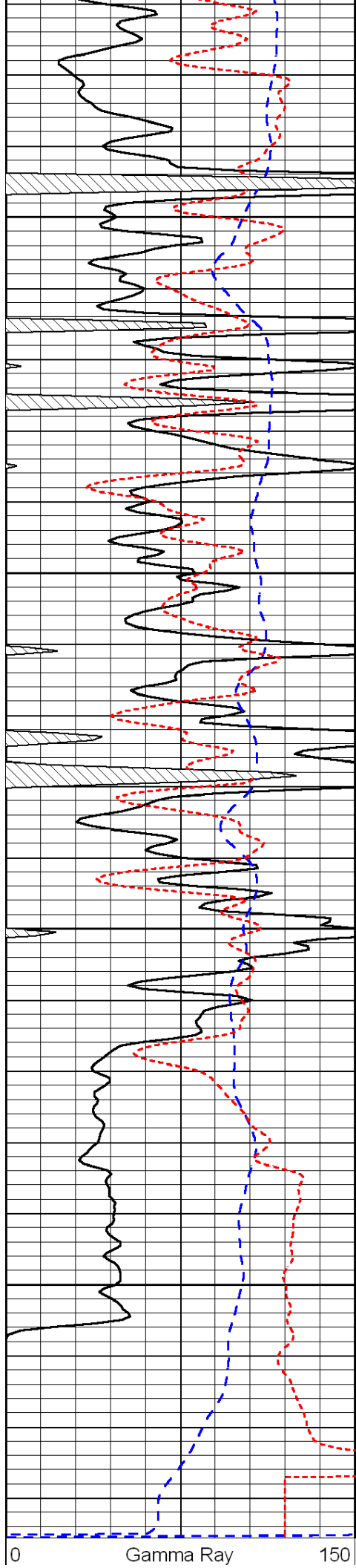
-32

-32

-32

-32

-32



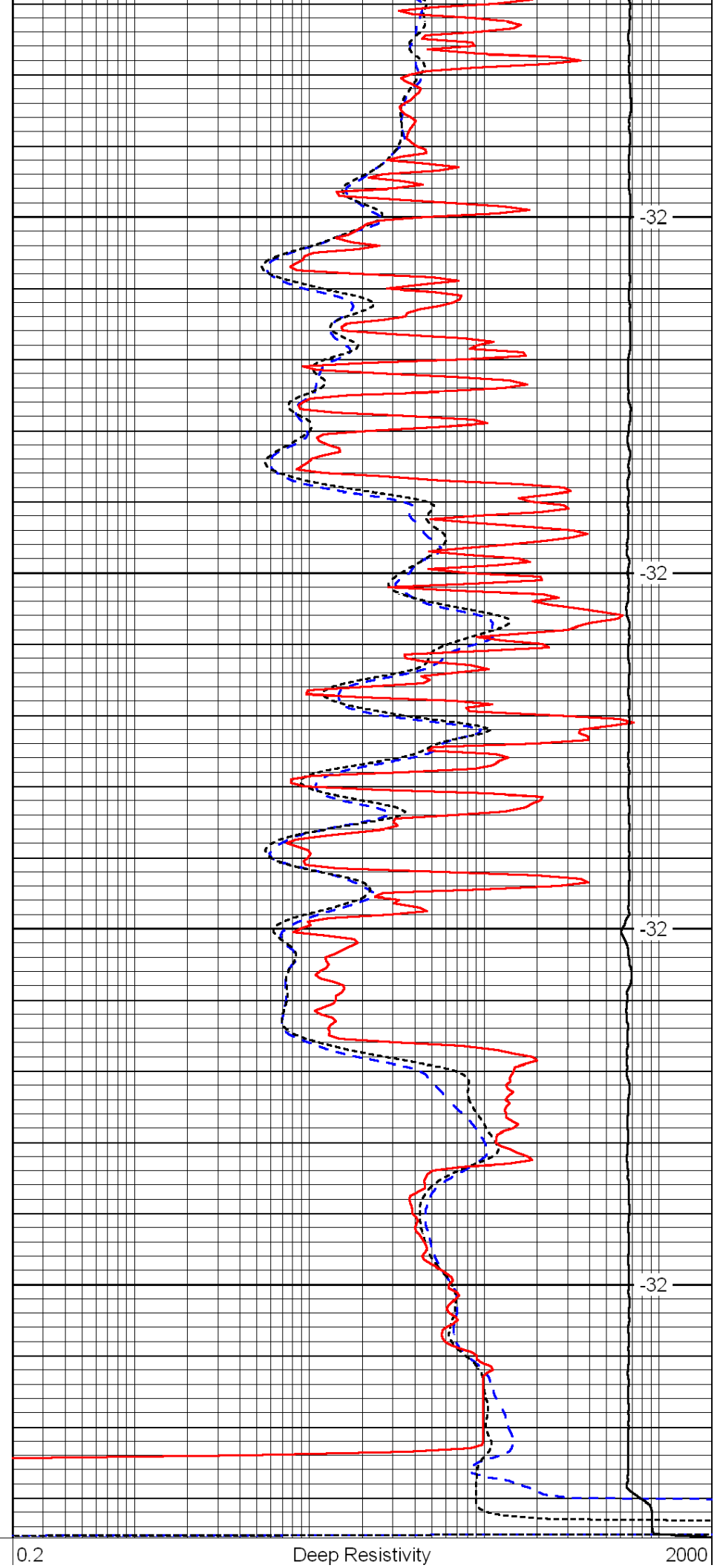
4250

4300

4350

4400

Gamma Ray



-32

-32

-32

-32

Deep Resistivity

2000

-200	SP (mV)	0
-160	Rxo / Rt	40

0.2	Medium Resistivity	2000
0.2	Shallow Resistivity	2000
15000	Line Tension	0

LSPD