



Dual Compensated Porosity Log

DIGITAL LOG (785) 625-3858

API No. 15-109-20977-00-00

Company Brito Oil Company, Inc.
Well Fairleigh "C" #1-12
Field Wildcat
County Logan State Kansas

Location NE NE SE SW
1115' FSL / 2410' FWL

Sec: 12 Twp: 15S Rge: 33W

Other Services
DIL
MEL

Permanent Datum Ground Level Elevation 2727
Log Measured From Kelly Bushing 5 Ft. Above Perm. Datum
Drilling Measured From Kelly Bushing

Date 3/24/2011

Run Number One
Type Log CNL / CDL
Depth Driller 4430
Depth Logger 4429
Bottom Logged Interval 4408
Top Logged Interval 3400
Type Fluid In Hole Chemical
Salinity, PPM CL 4500
Density 9.1
Level Full
Max. Rec. Temp. F 120
Operating Rig Time 4 Hours
Equipment -- Location 15 Hays
Recorded By R. Barnhart
Witnessed By Tom Funk

Borehole Record				Casing Record			
Run No.	Bit	From	To	Size	Wgt.	From	To
1	12.25	00	219	8.625	24#	00	219
2	7.875	219	4430				

<<< Fold Here >>>

All interpretations are opinions based on inferences from electrical or other measurements and we cannot and do not guarantee the accuracy or correctness of any interpretation, and we shall not, except in the case of gross or willful negligence on our part, be liable or responsible for any loss, costs, damages, or expenses incurred or sustained by anyone resulting from any interpretation made by any of our officers, agents or employees. These interpretations are also subject to our general terms and conditions set out in our current Price Schedule.

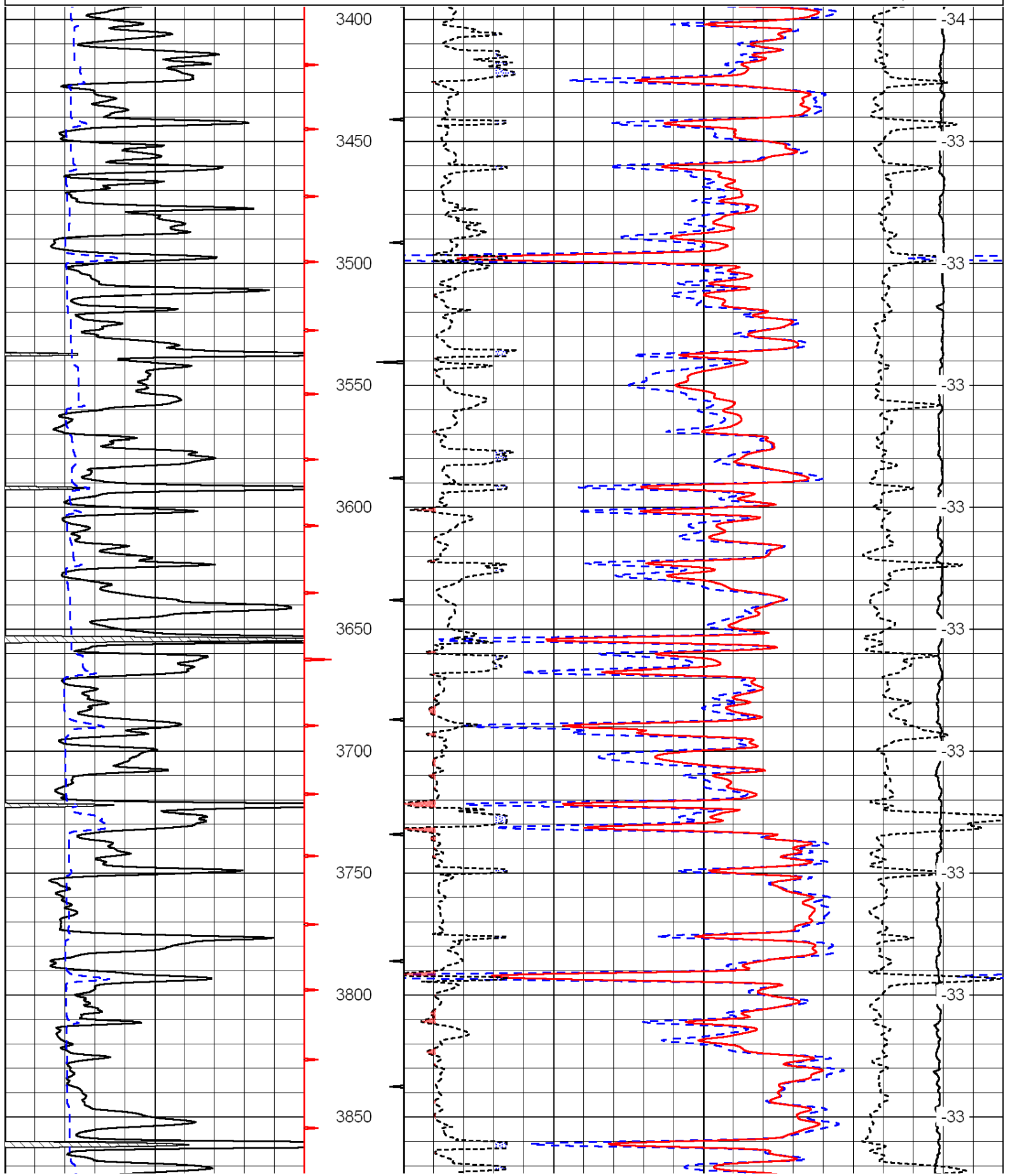
Comments

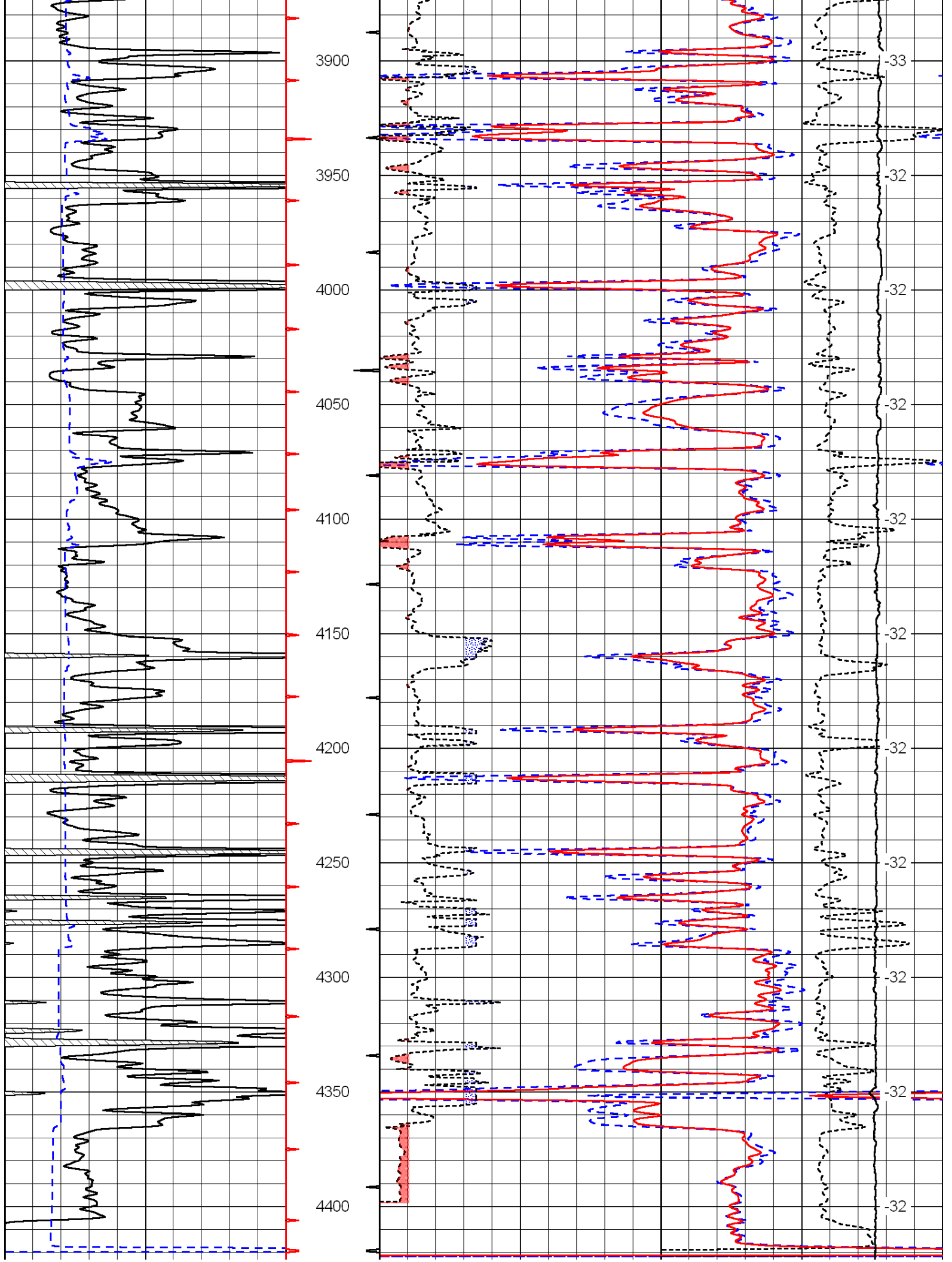
Thank you for using Log-Tech, Inc.
(785) 625-3858

Oakley, KS:
S past river to Gold Rd,
5W, 2S, E into

0	Gamma Ray	150
6	Caliper (GAPI)	16

30	Compensated Density		-10
2	Bulk Density		3
15000	Line Tension		0
2.625	DGA	3.425	-0.25
Correction			0.25
LSPD			

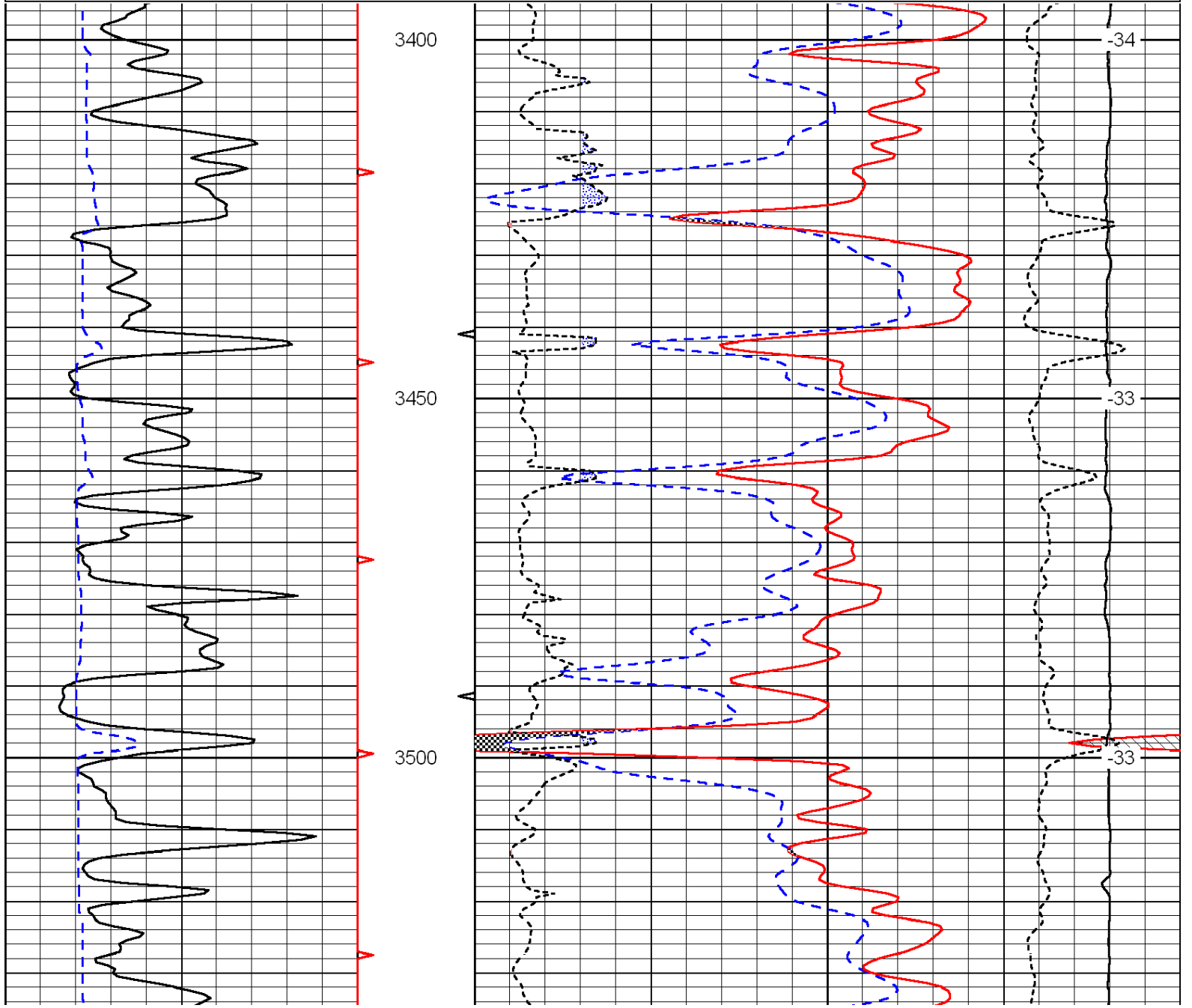


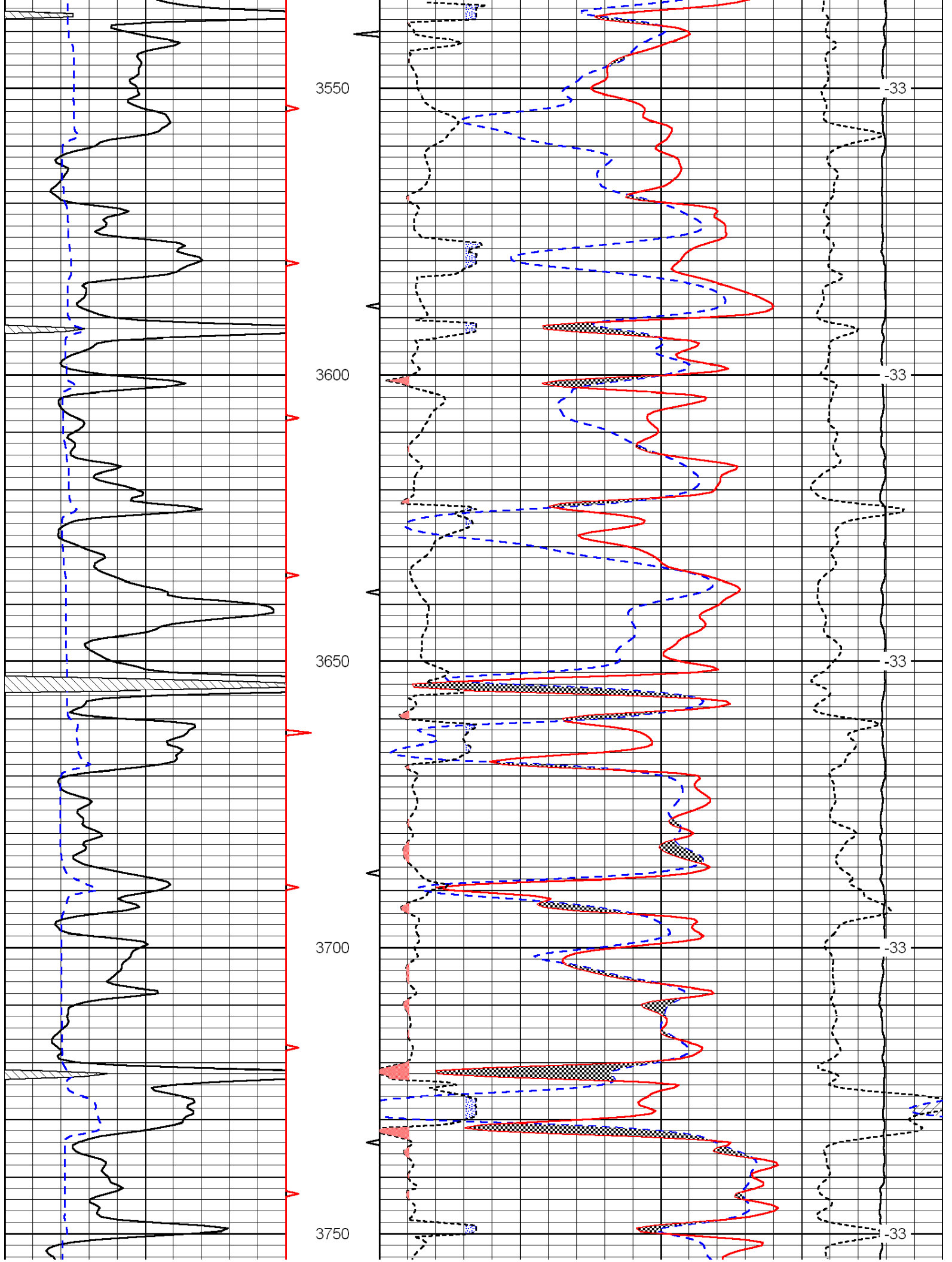


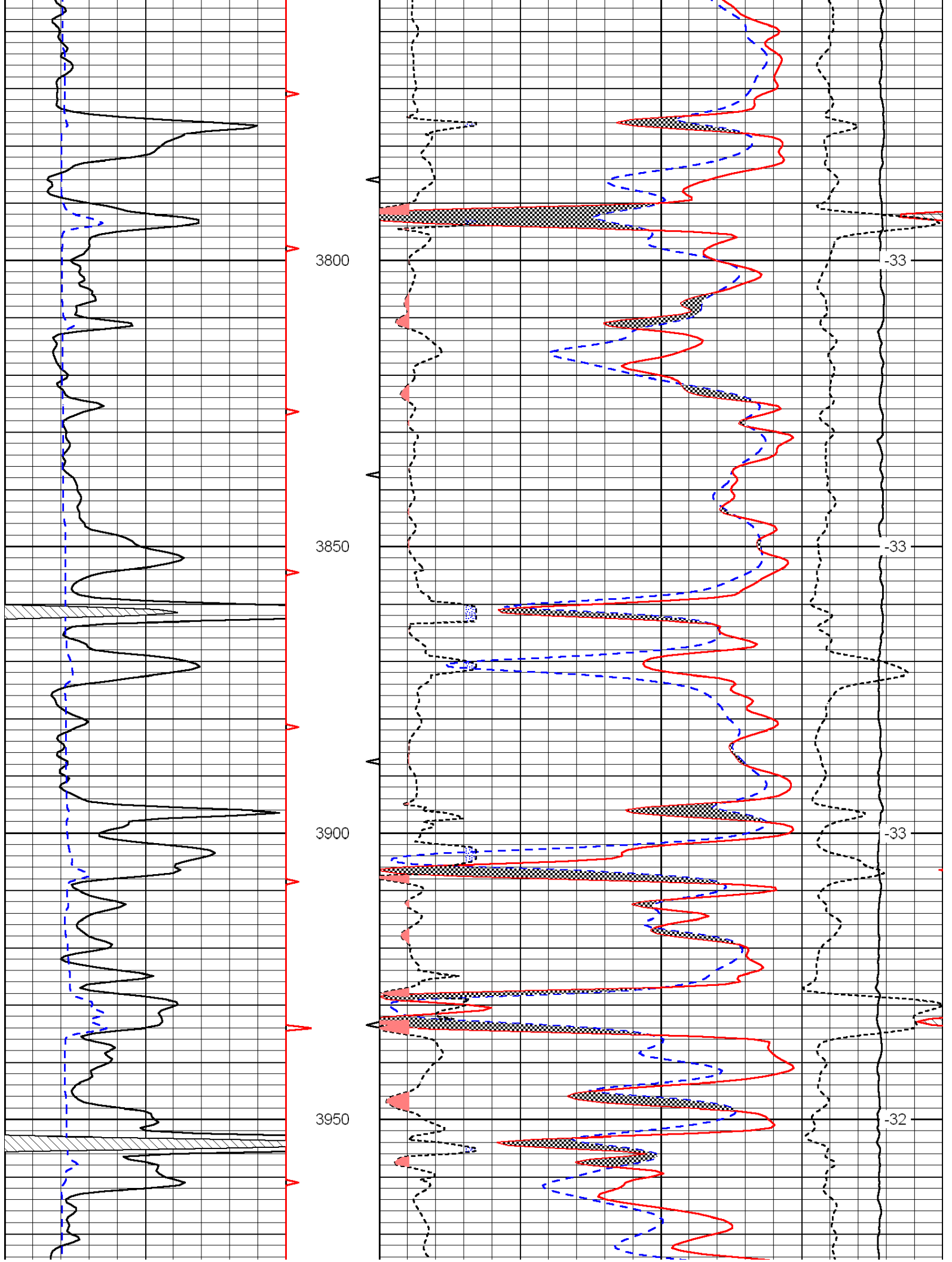
0	Gamma Ray	150	30	Compensated Density			-10
6	Caliper (GAPI)	16	2	Bulk Density			3
			15000	Line Tension			0
			2.625	DGA	3.425	-0.25	Correction 0.25
							LSPD

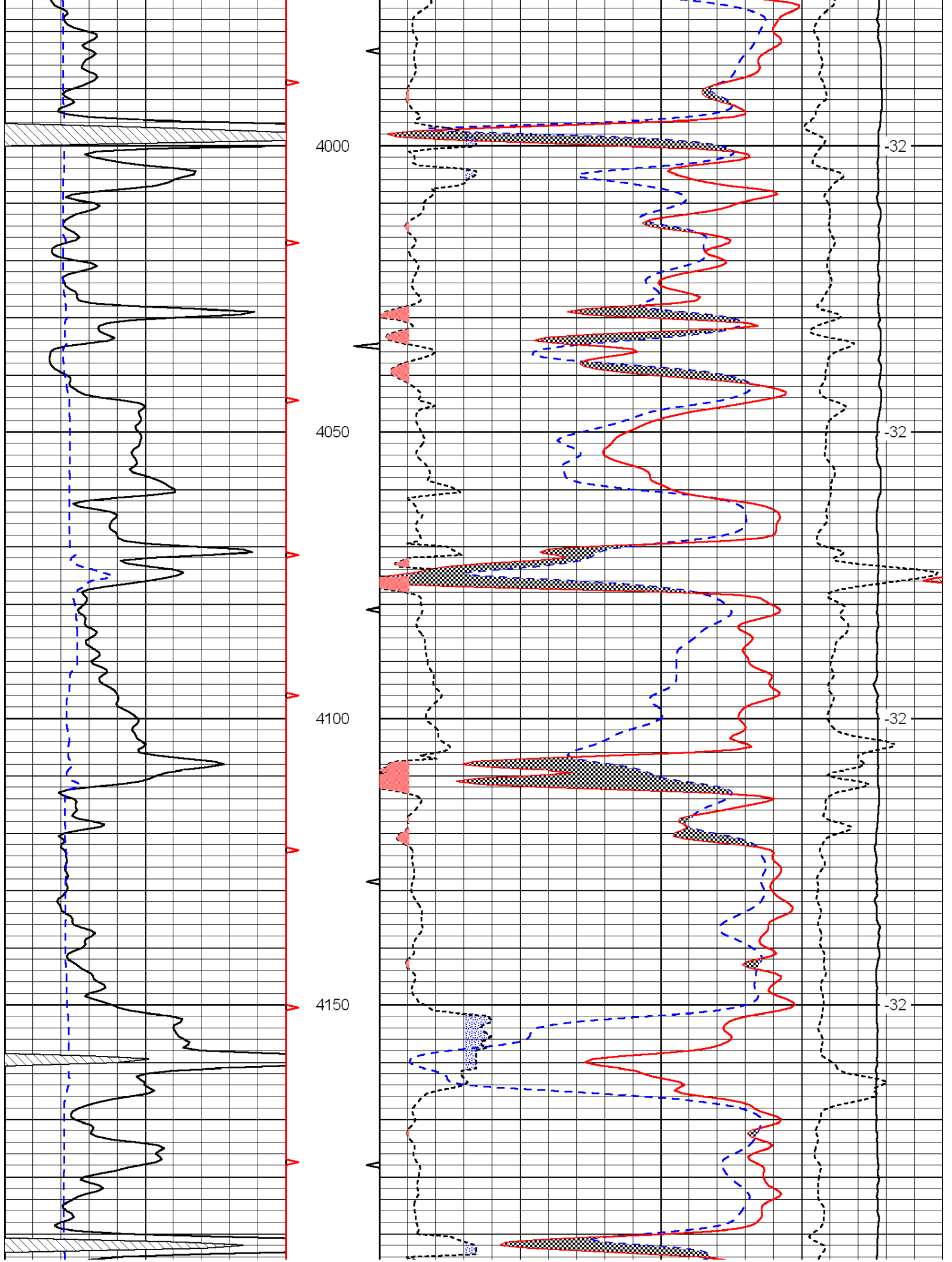
Database File: c:\warrior\data\brito_fairleigh c #1-12\britohd2.db
 Dataset Pathname: dil/brimain
 Presentation Format: cndlspec
 Dataset Creation: Thu Mar 24 14:10:33 2011
 Charted by: Depth in Feet scaled 1:240

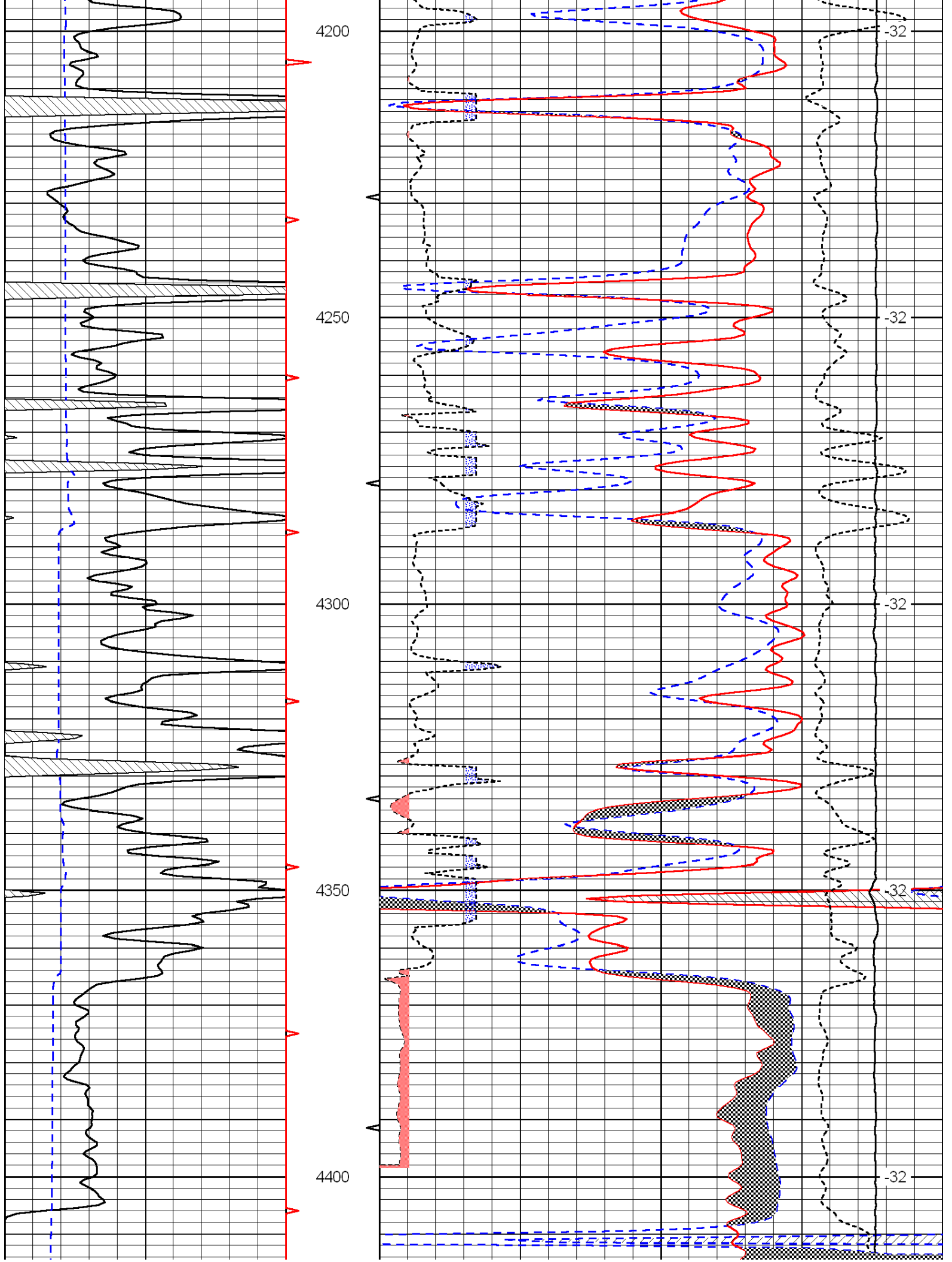
0	Gamma Ray	150	30	Compensated Neutron (Limestone)			-10
6	Caliper (GAPI)	16	30	Compensated Density (Limestone)			-10
			2.625	DGA	3.425	-0.25	Correction 0.25
			15000	Line Tension			0
							LSPD

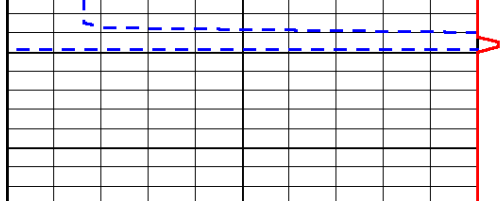




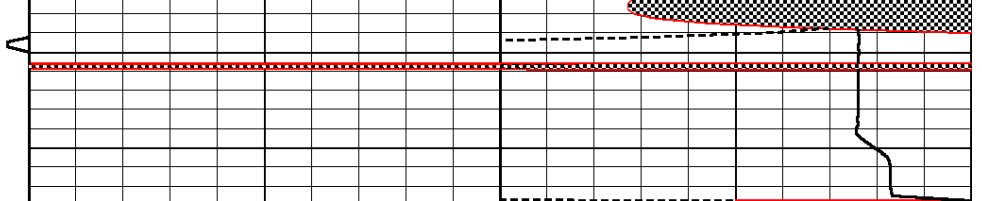








0	Gamma Ray	150
6	Caliper (GAPI)	16



30	Compensated Neutron (Limestone)	-10			
30	Compensated Density (Limestone)	-10			
2.625	DGA	3.425	-0.25	Correction	0.25
15000	Line Tension				0

LSPD