



Microresistivity Log

DIGITAL LOG (785) 625-3858

API No.	15-109-20977-00-00		
Company	Brito Oil Company, Inc.		
Well	Fairleigh "C" #1-12		
Field	Wildcat		
County	Logan	State	Kansas
Location	NE NE SE SW 1115' FSL / 2410' FWL		
Sec: 12	Twp: 15S	Rge: 33W	Other Services CNL / CDL DIL
Permanent Datum	Ground Level	Elevation	Elevation
Log Measured From	Kelly Bushing	5 Ft. Above Perm. Datum	K.B. 2732
Drilling Measured From	Kelly Bushing		D.F. 2727
			G.L. 2727

Date	3/24/2011
Run Number	Two
Depth Driller	4430
Depth Logger	4429
Bottom Logged Interval	4428
Top Log Interval	3400
Casing Driller	8.625 @ 219
Casing Logger	214
Bit Size	7.875
Type Fluid in Hole	Chemical
Salinity, ppm CL	4500
Density / Viscosity	9.1 57
pH / Fluid Loss	9.5 8.8
Source of Sample	Flowline
Rm @ Meas. Temp	0.70 @ 60
Rmf @ Meas. Temp	0.53 @ 60
Rmc @ Meas. Temp	0.95 @ 60
Source of Rmf / Rmc	Charts
Rm @ BHT	0.35 @ 120
Operating Rig Time	4 Hours
Max Rec. Temp. F	120
Equipment Number	15
Location	Hays
Recorded By	R. Barnhart
Witnessed By	Tom Funk

<<< Fold Here >>>

All interpretations are opinions based on inferences from electrical or other measurements and we cannot and do not guarantee the accuracy or correctness of any interpretation, and we shall not, except in the case of gross or willful negligence on our part, be liable or responsible for any loss, costs, damages, or expenses incurred or sustained by anyone resulting from any interpretation made by any of our officers, agents or employees. These interpretations are also subject to our general terms and conditions set out in our current Price Schedule.

Comments

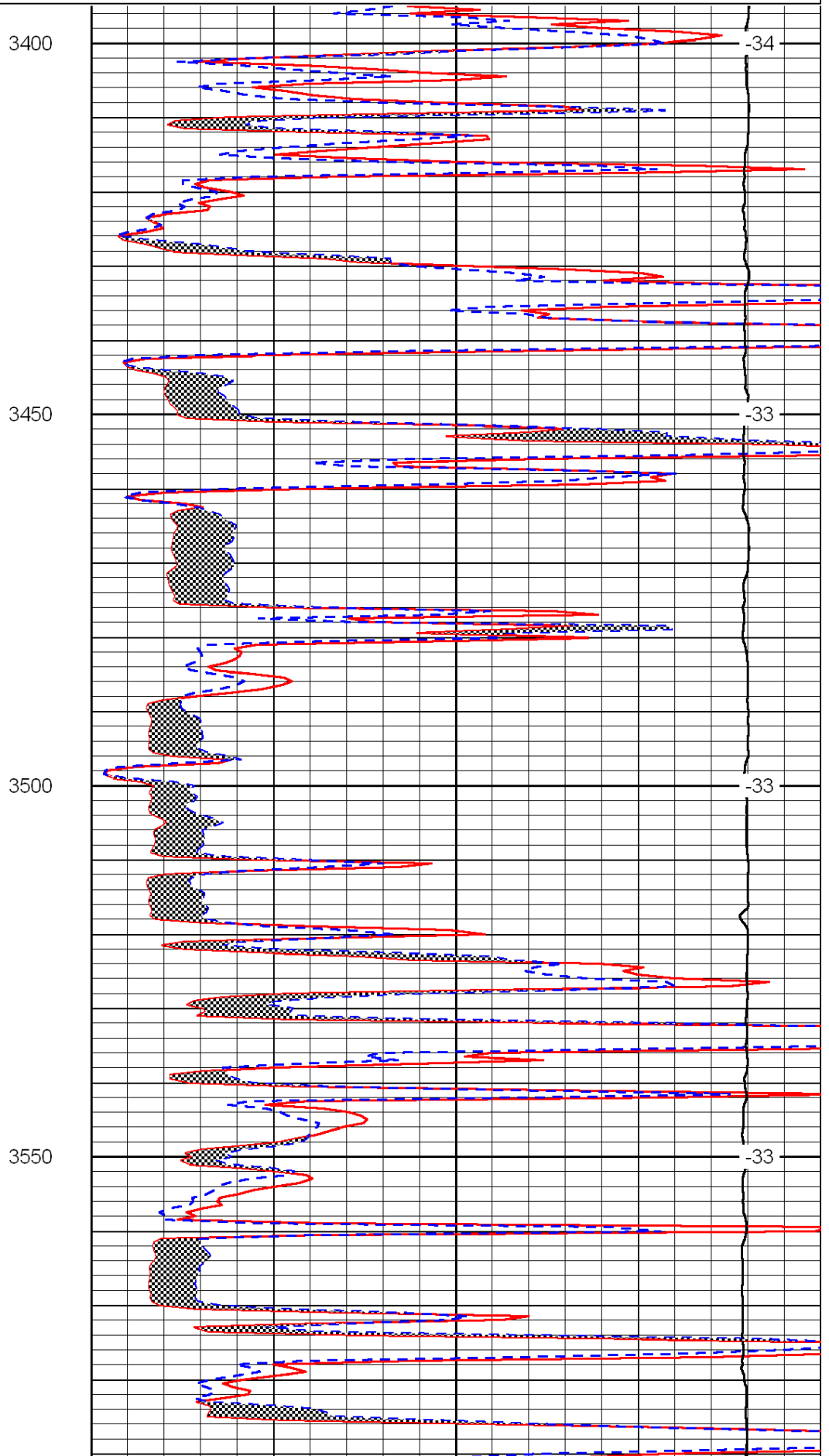
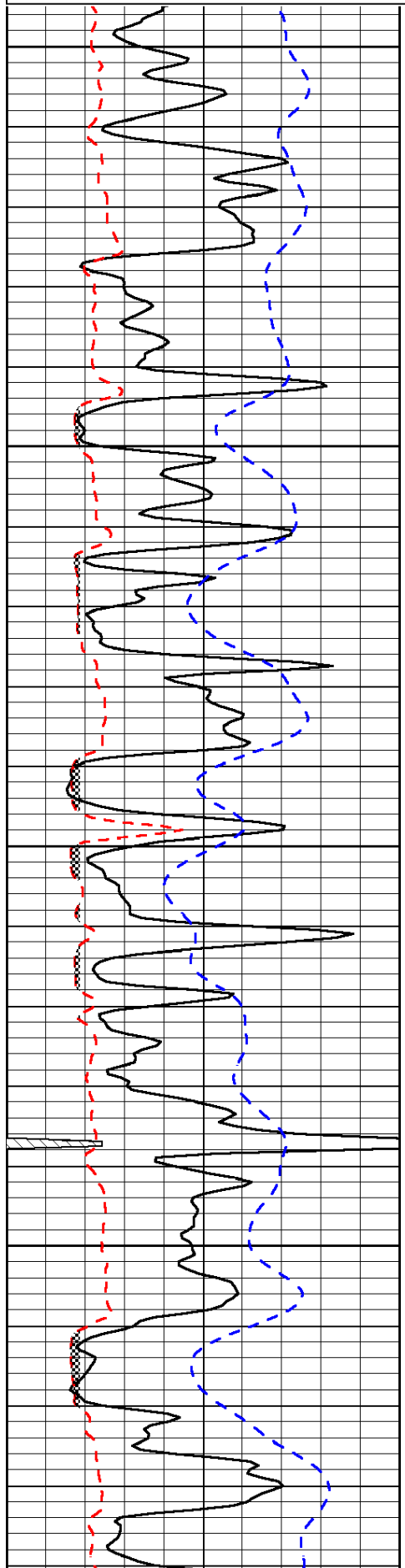
Thank you for using Log-Tech, Inc.
(785) 625-3858

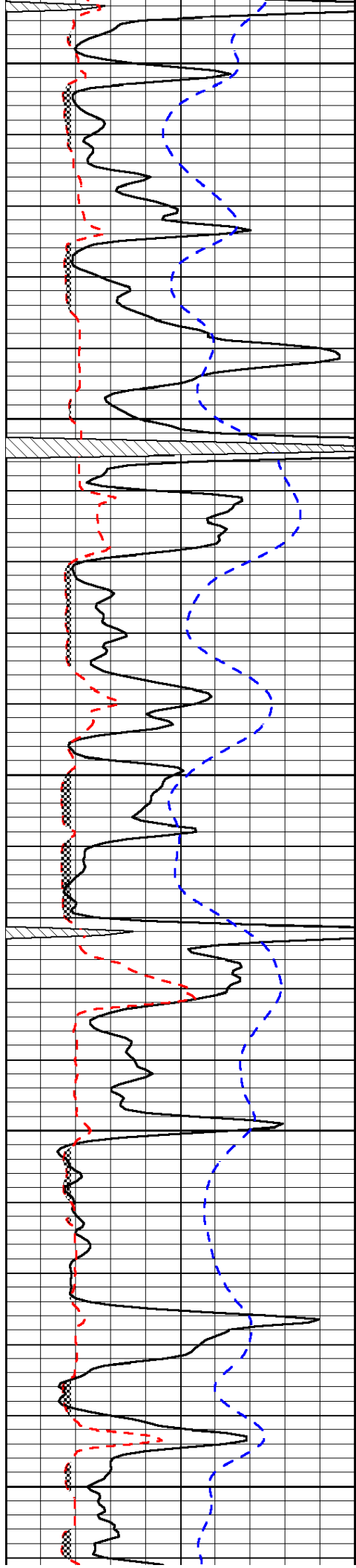
Oakley, KS:
S past river to Gold Rd,
5W, 2S, E into

0	Gamma Ray	150
6	Micro Log Caliper (GAPI)	16
-200	SP (mV)	0

0	Micro Inverse 1 X 1	40
0	Micro Normal 2"	40
15000	Line Weight	0

LSPD





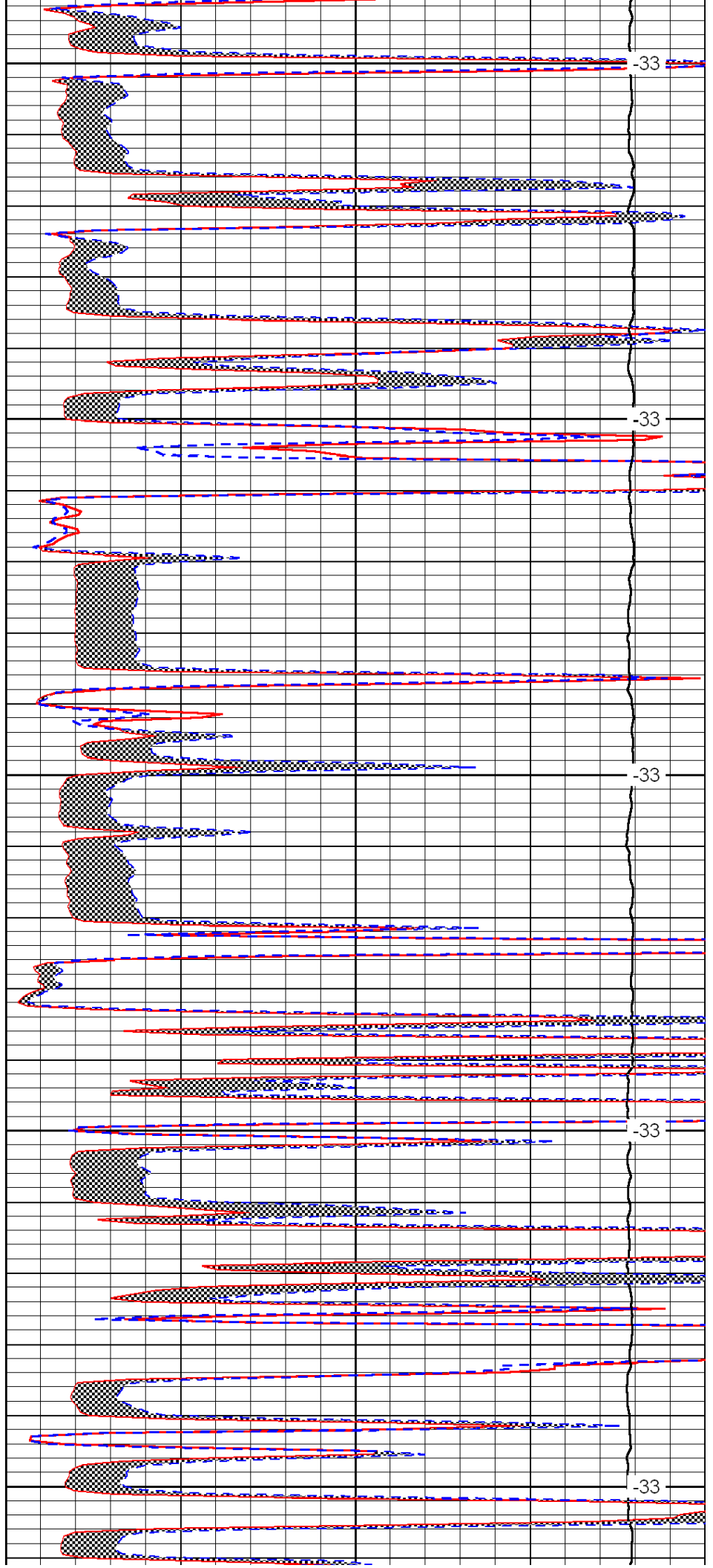
3600

3650

3700

3750

3800



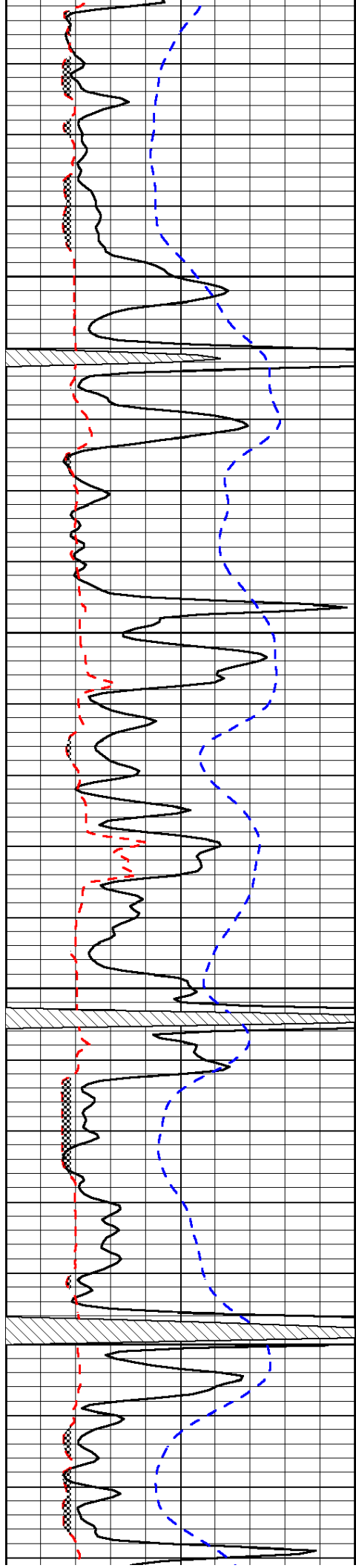
-33

-33

-33

-33

-33

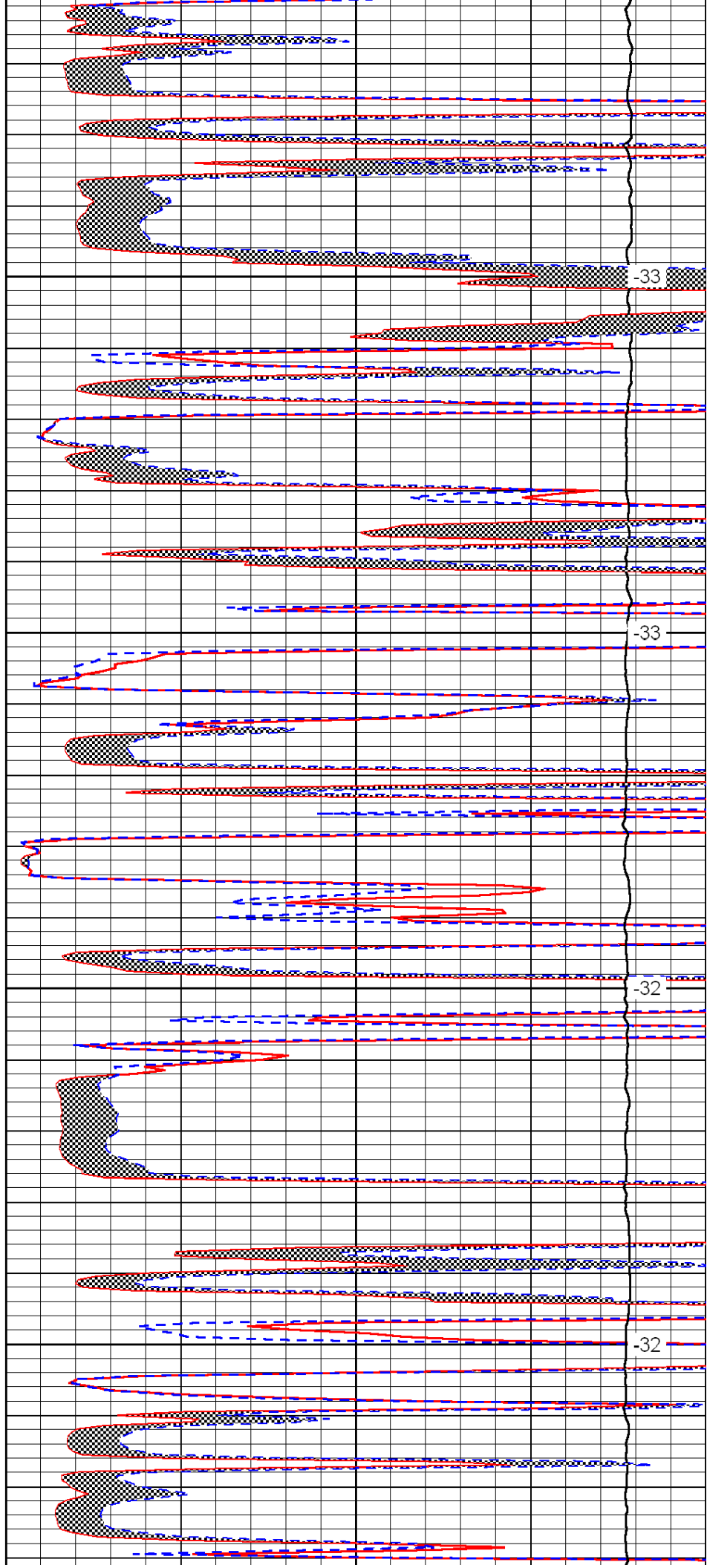


3850

3900

3950

4000

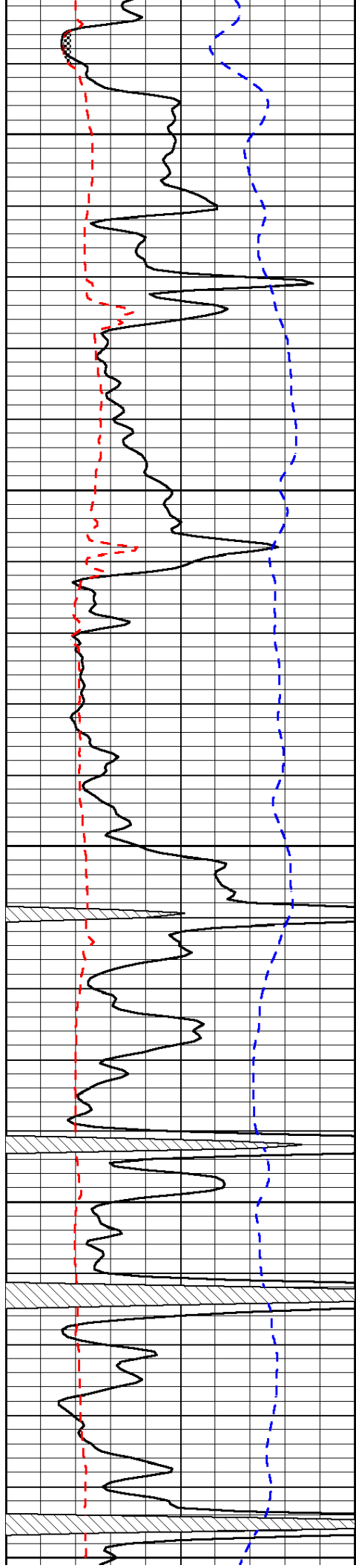


-33

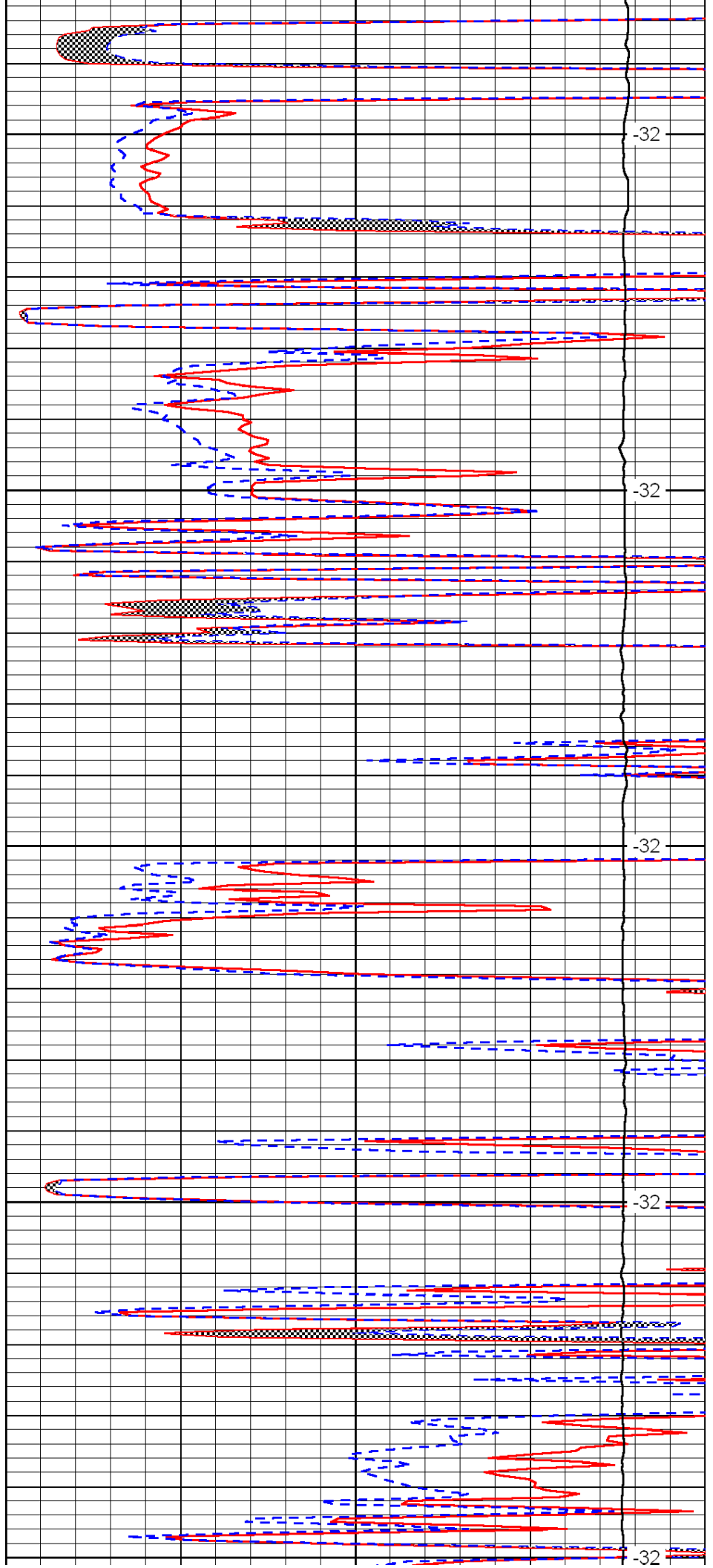
-33

-32

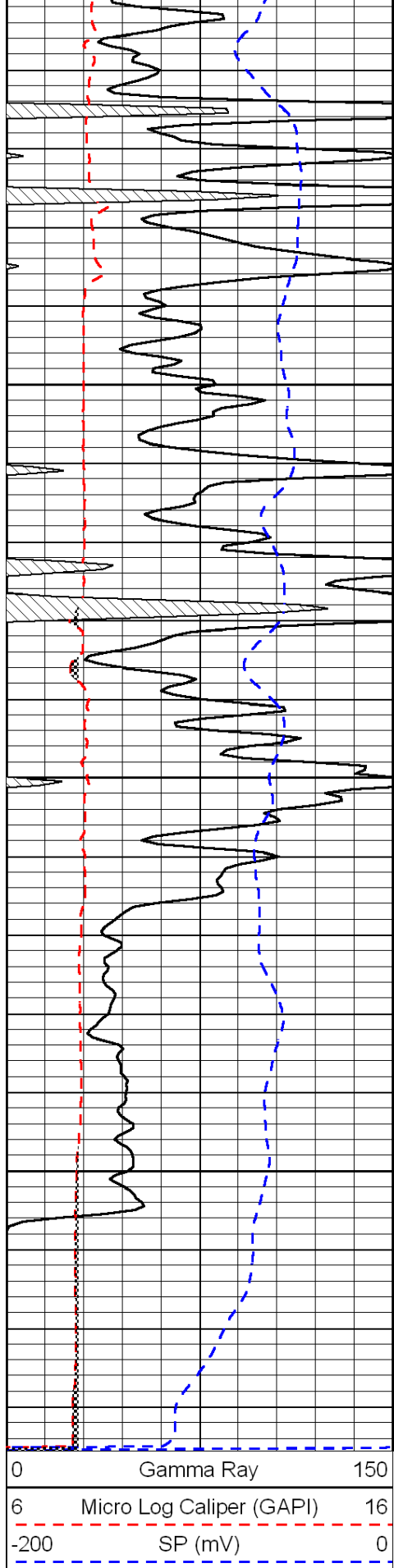
-32



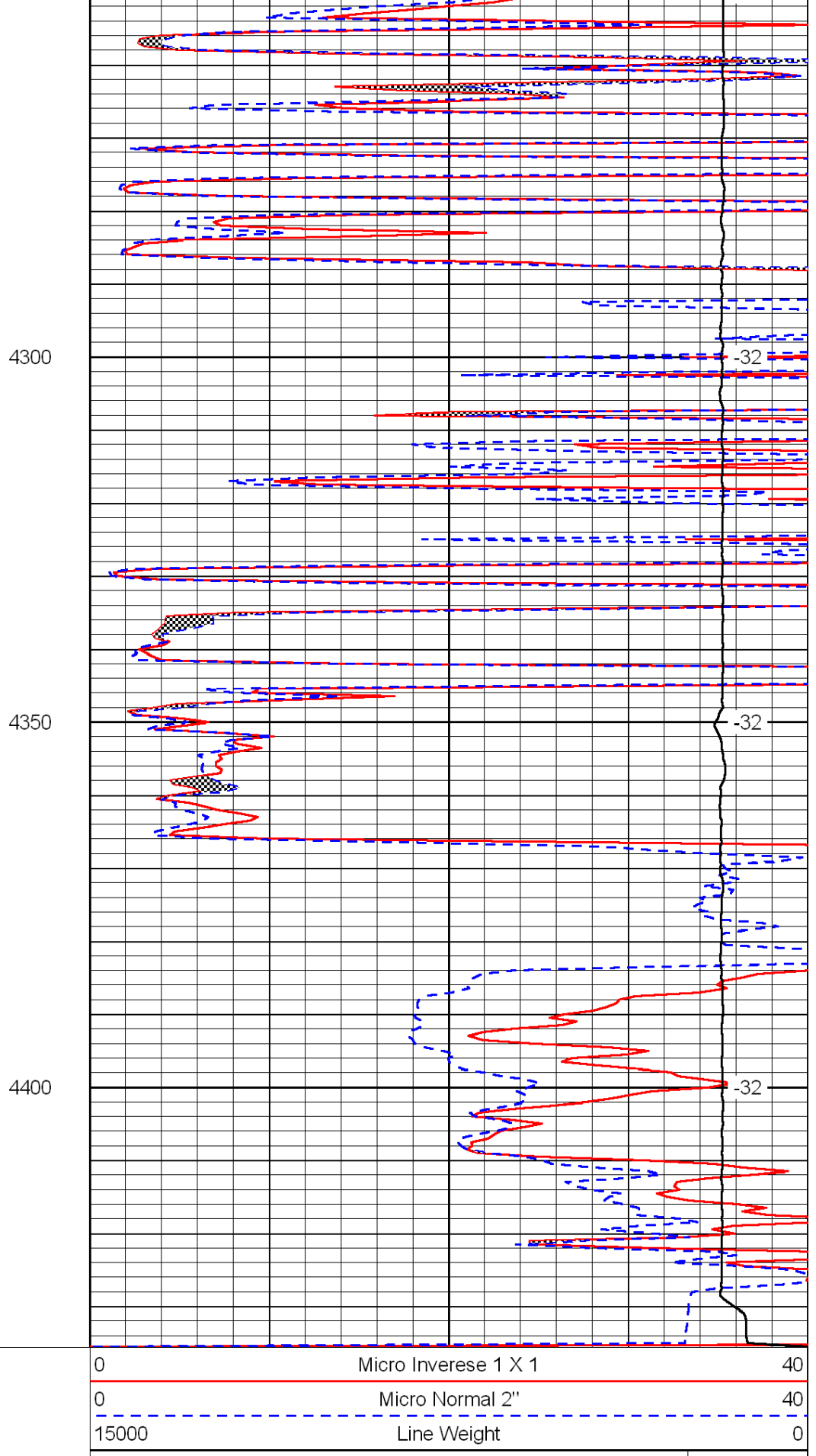
4050
4100
4150
4200
4250



-32
-32
-32
-32
-32



0	Gamma Ray	150
6	Micro Log Caliper (GAPI)	16
-200	SP (mV)	0



0	Micro Inverse 1 X 1	40
0	Micro Normal 2''	40
15000	Line Weight	0

LSPD