



Dual Compensated Porosity Log

DIGITAL LOG (785) 625-3858

API No. 15-101-22,268-00-00

Company **Larson Engineering, Inc.**
 Well **Marit No. 2-24**
 Field **Wildcat**
 County **Lane** State **Kansas**

Location **NW SE NE NW**
768' FNL & 2,242' FWL

Sec: **24** Twp: **18 S** Rge: **30 W**

Other Services
 DIL
 MEL/BHCS

Permanent Datum **Ground Level** Elevation **2842**
 Log Measured From **Kelly Bushing** **7** Ft. Above Perm. Datum
 Drilling Measured From **Kelly Bushing**

K.B. 2849
 D.F. 2842
 G.L. 2842

Date **1/2/2011**

Run Number **Two**

Type Log **CNL / CDL**

Depth Driller **4617**

Depth Logger **4626**

Bottom Logged Interval **4605**

Top Logged Interval **3600**

Type Fluid In Hole **Chemical**

Salinity, PPM CL **2600**

Density **9.5**

Level **Full**

Max. Rec. Temp. F **122**

Operating Rig Time **5 Hours**

Equipment -- Location **10 Hays**

Recorded By **J Schuler**

Witnessed By **Vern Schrag**

Borehole Record				Casing Record			
Run No.	Bit	From	To	Size	Wgt.	From	To
1	12.25	00	256	8.625	24#	00	256
2	7.875	256	4617				

<<< Fold Here >>>

All interpretations are opinions based on inferences from electrical or other measurements and we cannot and do not guarantee the accuracy or correctness of any interpretation, and we shall not, except in the case of gross or willful negligence on our part, be liable or responsible for any loss, costs, damages, or expenses incurred or sustained by anyone resulting from any interpretation made by any of our officers, agents or employees. These interpretations are also subject to our general terms and conditions set out in our current Price Schedule.

Comments

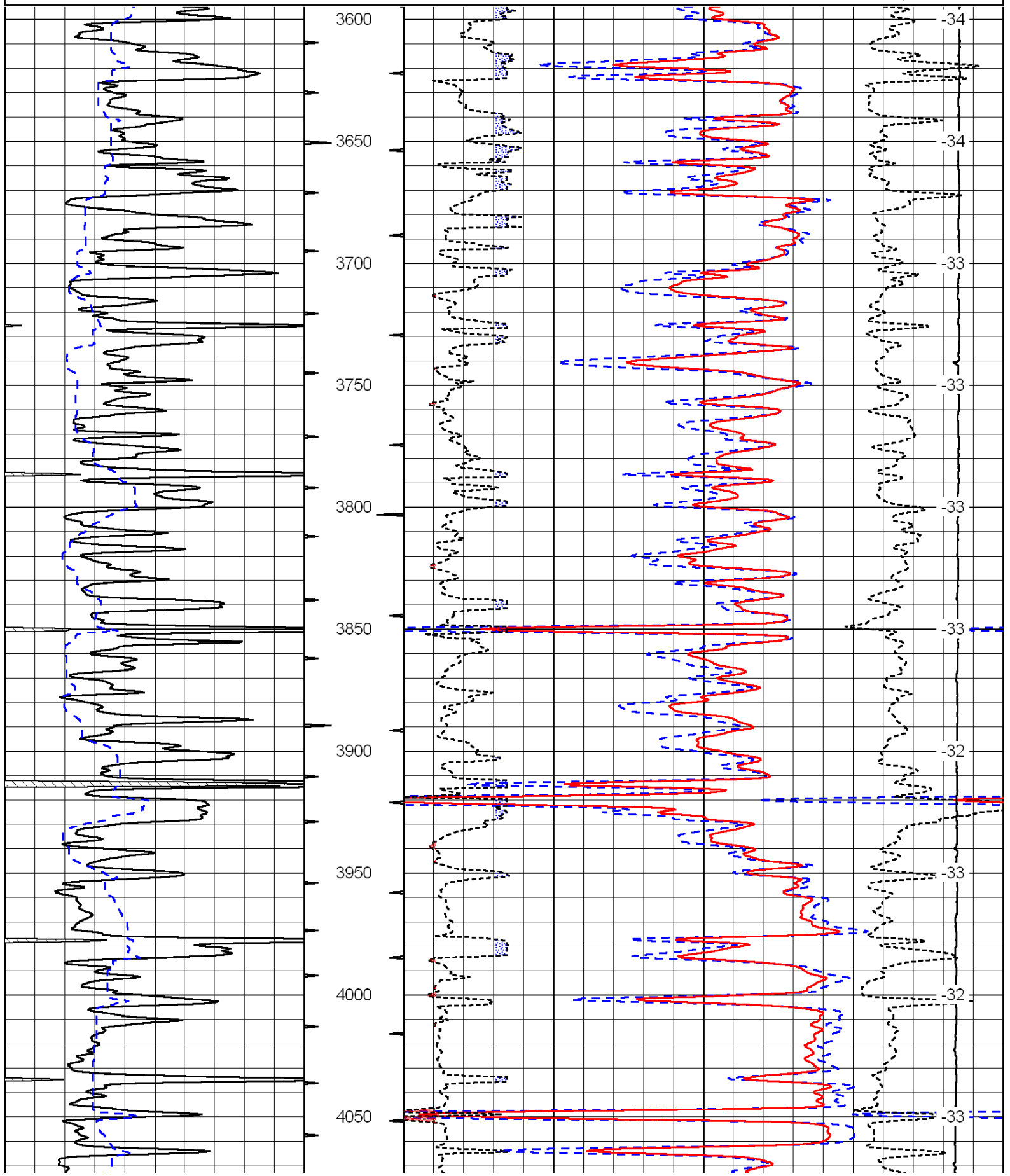
Thank you for using Log-Tech, Inc.
 (785) 625-3858

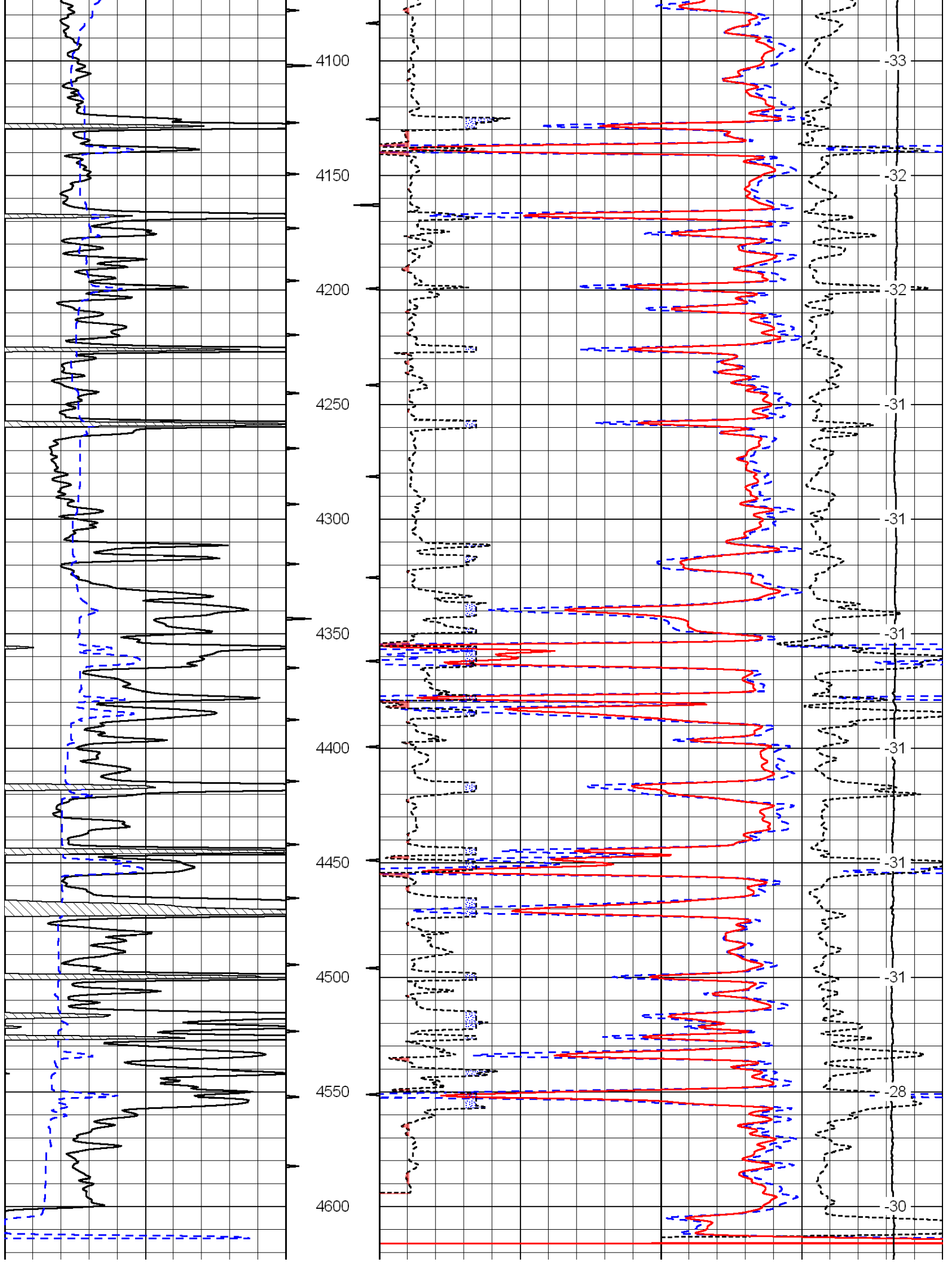
Dighton, 7 West to Eagle Road, South 1/8th Mile, East Into

Database File: c:\warrior\data\larson_marit no. 2-24\larson.db
 Dataset Pathname: dil\larstk
 Presentation Format: cdl
 Dataset Creation: Mon Jan 03 02:40:00 2011
 Charted by: Depth in Feet scaled 1:600

0	Gamma Ray	150
6	Caliper (GAPI)	16

30	Compensated Density		-10
2	Bulk Density		3
15000	Line Tension		0
2.625	DGA	3.425 -0.25	Correction 0.25
LSPD			

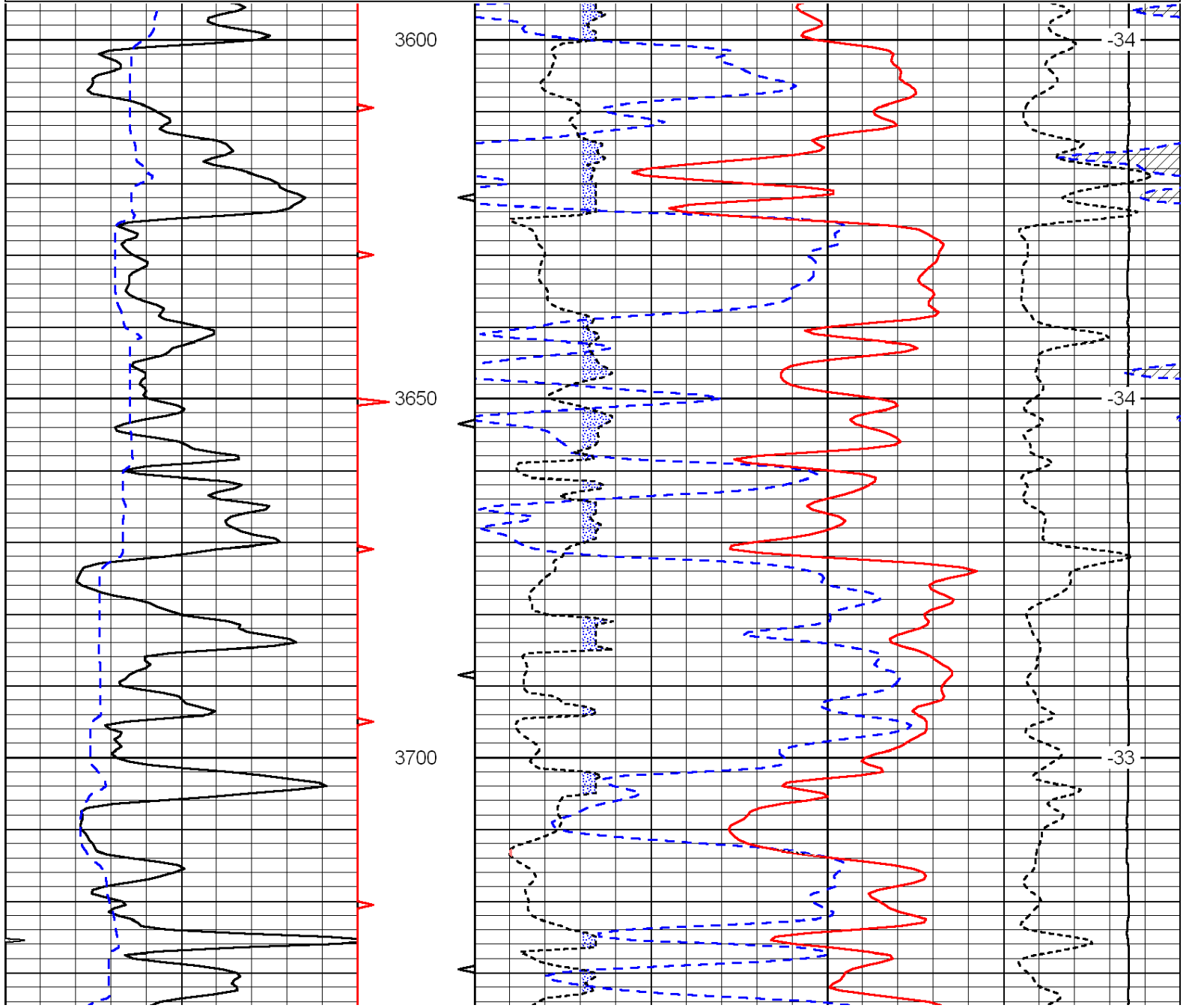


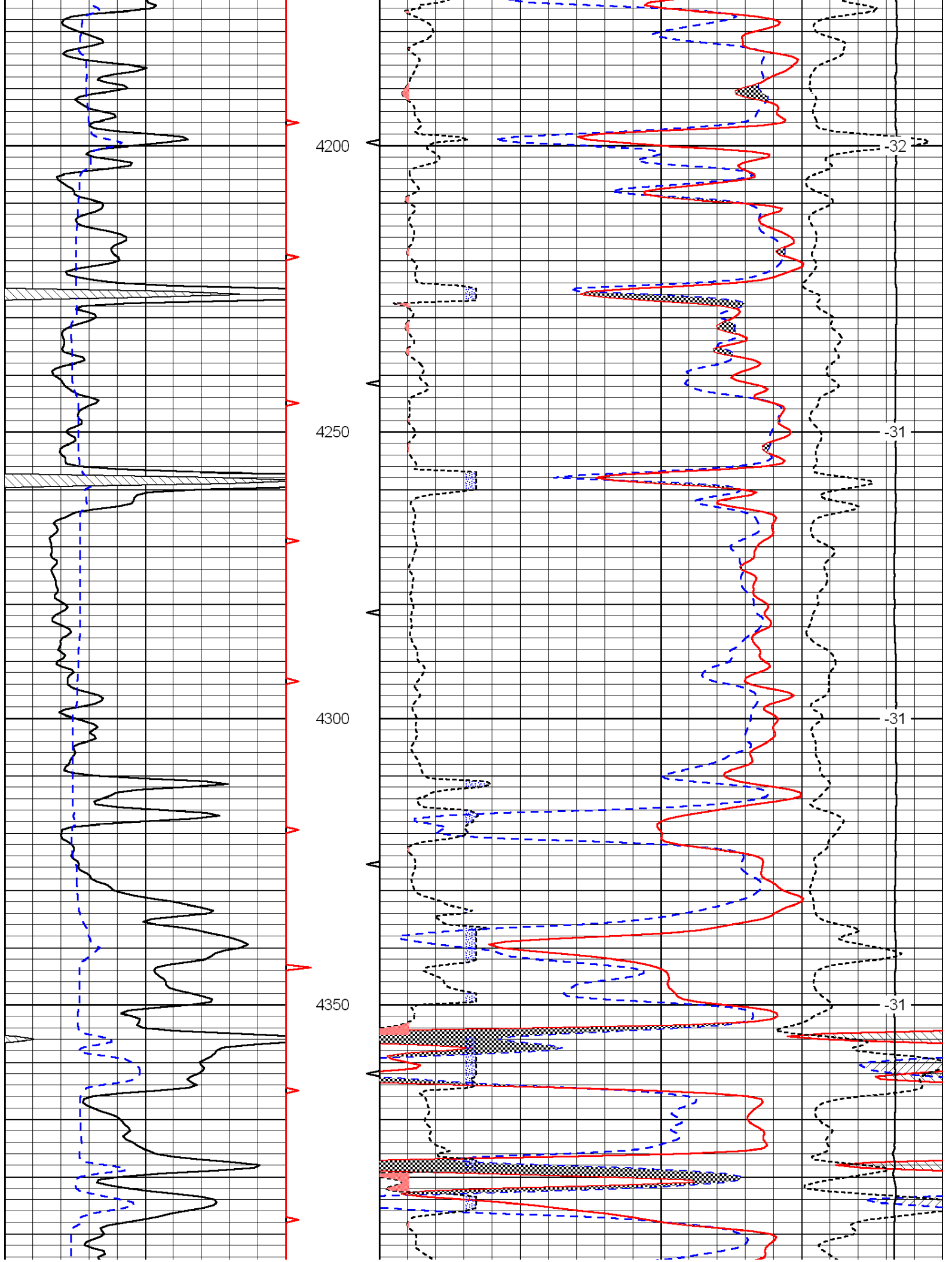


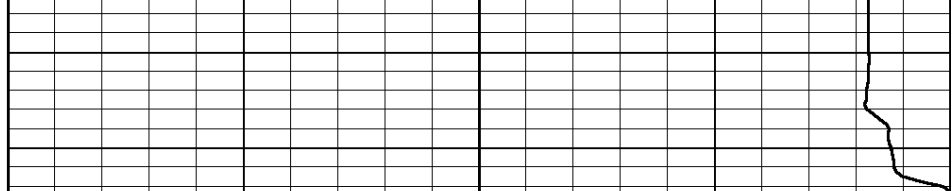
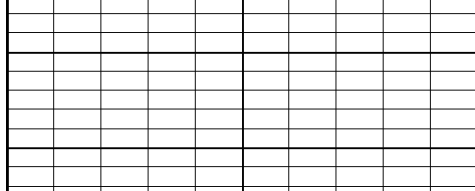
0	Gamma Ray	150	30	Compensated Density			-10
6	Caliper (GAPI)	16	2	Bulk Density			3
			15000	Line Tension			0
			2.625	DGA	3.425	-0.25	Correction 0.25
							LSPD

Database File: c:\warrior\data\larson_marit no. 2-24\larson.db
 Dataset Pathname: dil\larstk
 Presentation Format: cndlspec
 Dataset Creation: Mon Jan 03 02:40:00 2011
 Charted by: Depth in Feet scaled 1:240

0	Gamma Ray	150	30	Compensated Neutron (Limestone)			-10
6	Caliper (GAPI)	16	30	Compensated Density (2.71 ma)			-10
			2.625	DGA	3.425	-0.25	Correction 0.25
			15000	Line Tension			0
							LSPD







0	Gamma Ray	150
---	-----------	-----

6	Caliper (GAPI)	16
---	----------------	----

30	Compensated Neutron (Limestone)	-10
----	---------------------------------	-----

30	Compensated Density (2.71 ma)	-10
----	-------------------------------	-----

2.625	DGA	3.425	-0.25	Correction	0.25
-------	-----	-------	-------	------------	------

15000	Line Tension	0
-------	--------------	---

LSPD
