



Dual Induction Log

DIGITAL LOG (785) 625-3858

API No.	15-101-22,268-00-00	
Company	Larson Engineering, Inc.	
Well	Marit No. 2-24	
Field	Wildcat	
County	Lane	State
Location	NW SE NE NW 768' FNL & 2,242' FWL	
	Sec: 24	Twp: 18 S Rge: 30 W
		Elevation 2842
		7 Ft. Above Perm. Datum
		Other Services CNL/CDL MEL/BHCS

Date	1/2/2011	
Run Number	Two	
Depth Driller	4617	
Depth Logger	4626	
Bottom Logged Interval	4625	
Top Log Interval	250	
Casing Driller	8.625 @ 256	
Casing Logger	255	
Bit Size	7.875	
Type Fluid in Hole	Chemical	
Salinity, ppm CL	2600	
Density / Viscosity	9.5 54	
pH / Fluid Loss	11 7.6	
Source of Sample	Flowline	
Rm @ Meas. Temp	1.05 @ 53	
Rmf @ Meas. Temp	.79 @ 53	
Rmc @ Meas. Temp	1.42 @ 53	
Source of Rmf / Rmc	Charts	
Rm @ BHT	.46 @ 122	
Operating Rig Time	5 Hours	
Max Rec. Temp. F	122	
Equipment Number	10	
Location	Hays	
Recorded By	J Schuler	J Long
Witnessed By	Vern Schrag	

<<< Fold Here >>>

All interpretations are opinions based on inferences from electrical or other measurements and we cannot and do not guarantee the accuracy or correctness of any interpretation, and we shall not, except in the case of gross or willful negligence on our part, be liable or responsible for any loss, costs, damages, or expenses incurred or sustained by anyone resulting from any interpretation made by any of our officers, agents or employees. These interpretations are also subject to our general terms and conditions set out in our current Price Schedule.

Comments

Thank you for using Log-Tech, Inc.
(785) 625-3858

Dighton, 7 West to Eagle Road, South 1/8th Mile, East Into

Database File: c:\warrior\data\larson_marit no. 2-24\larson.db
 Dataset Pathname: dil\larstk
 Presentation Format: dil2in
 Dataset Creation: Mon Jan 03 02:40:00 2011
 Charted by: Depth in Feet scaled 1:600

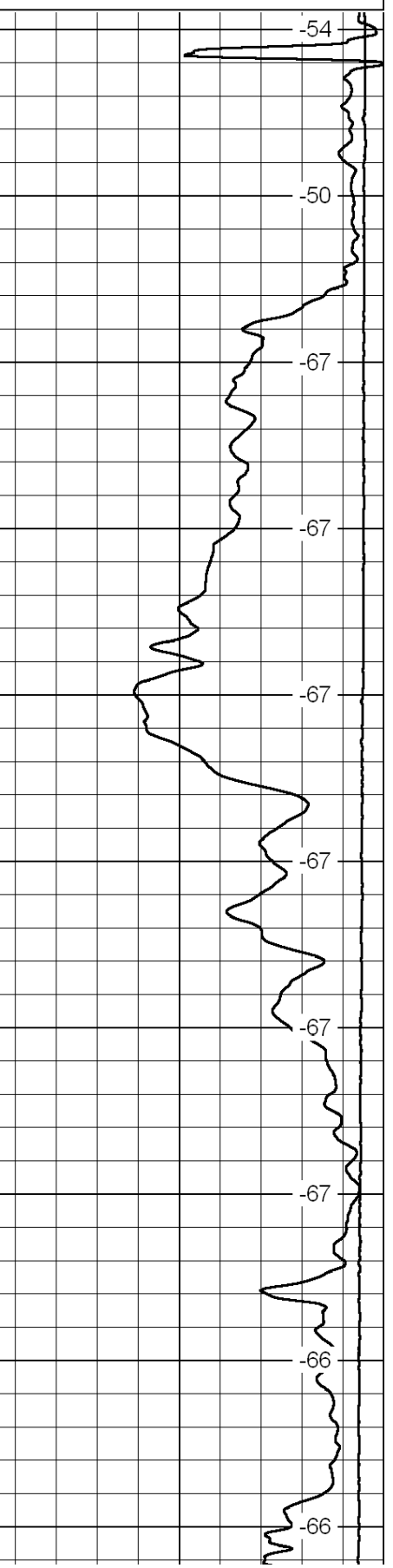
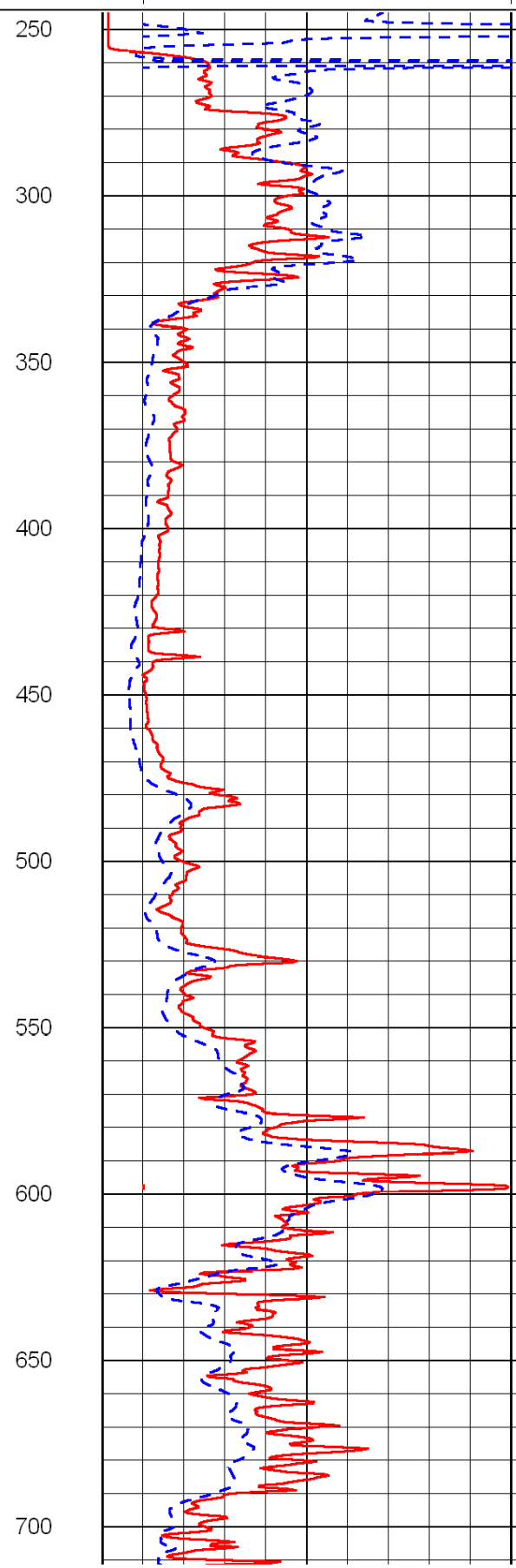
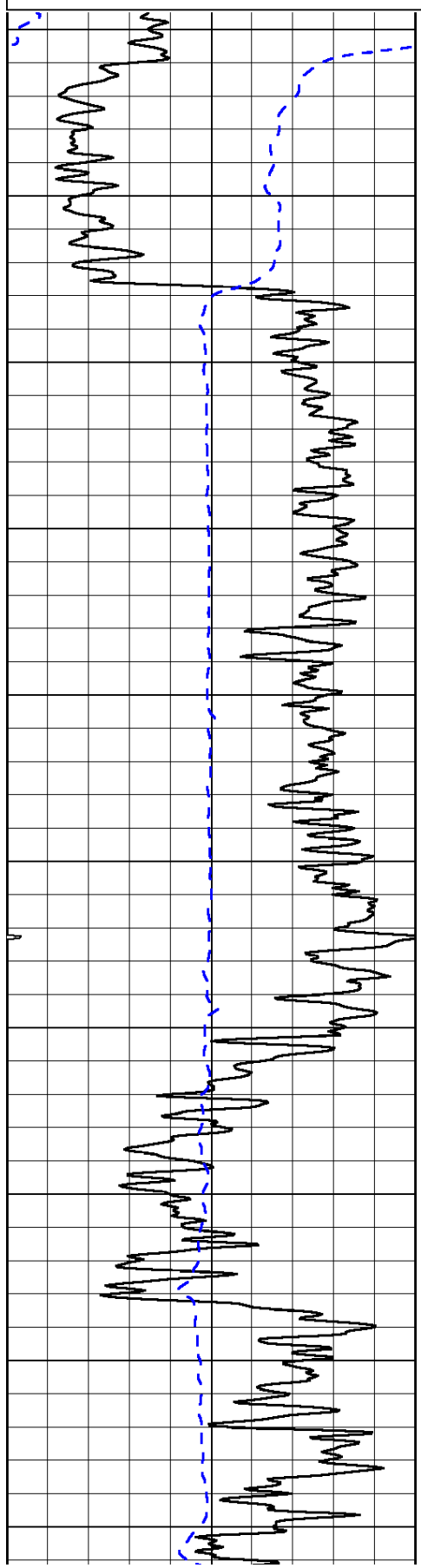
0	Gamma Ray	150
-200	SP (mV)	0

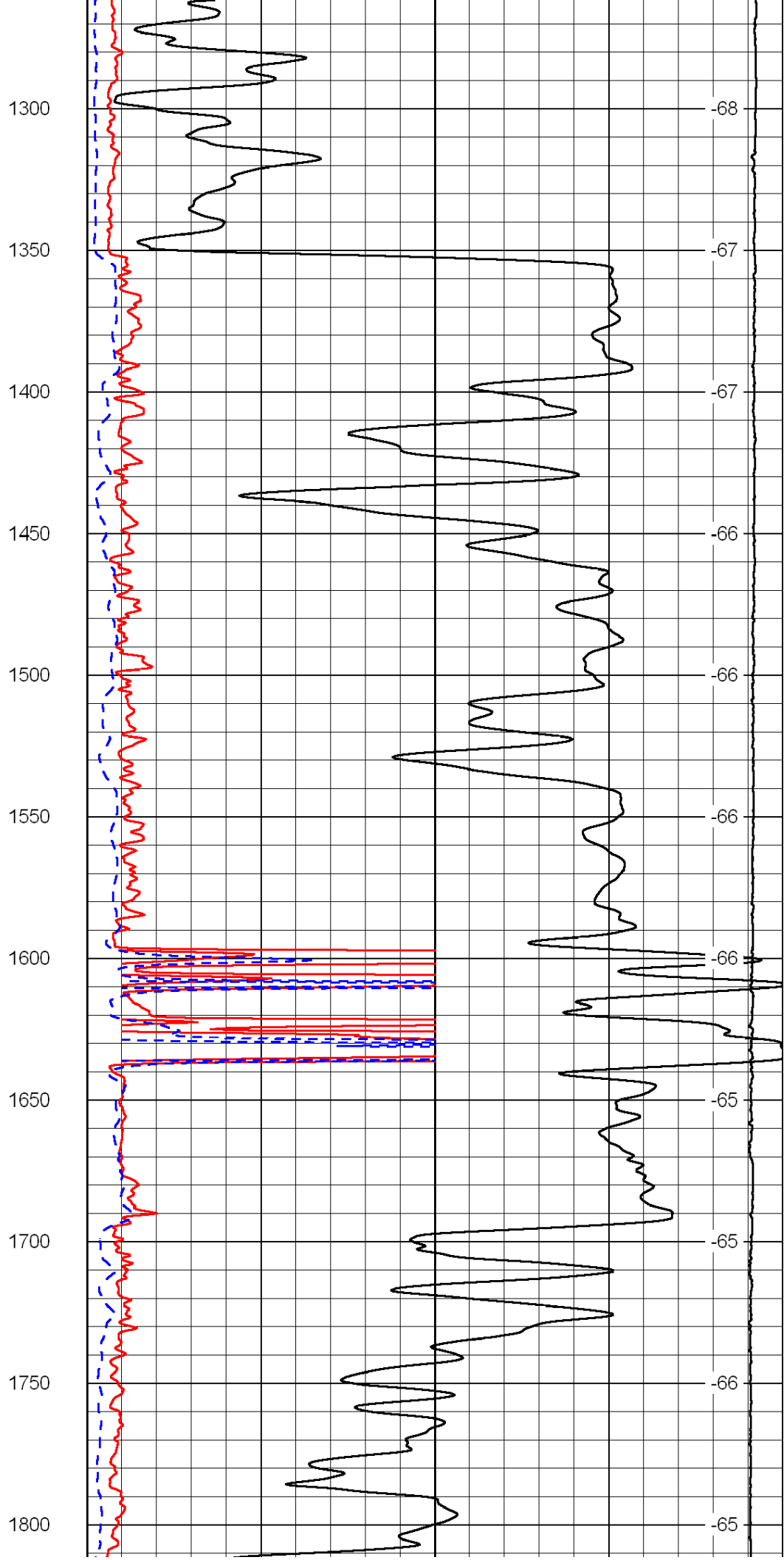
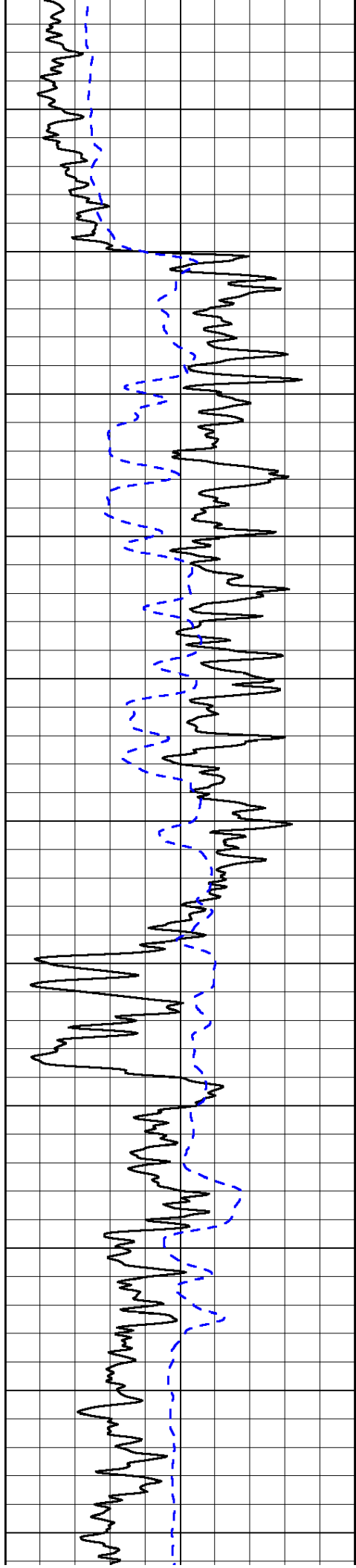
0	Shallow Resistivity	50
0	Deep Resistivity	50

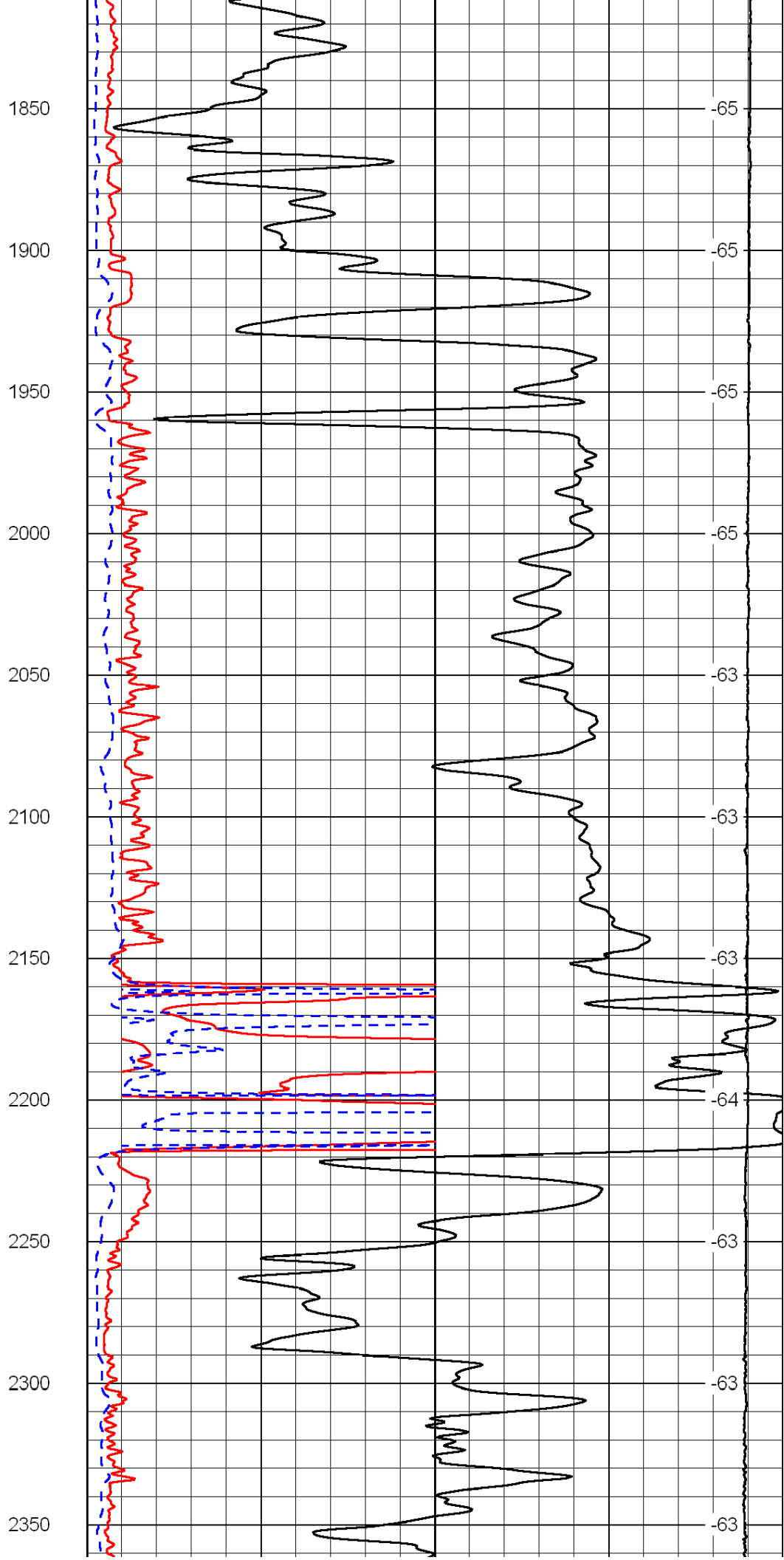
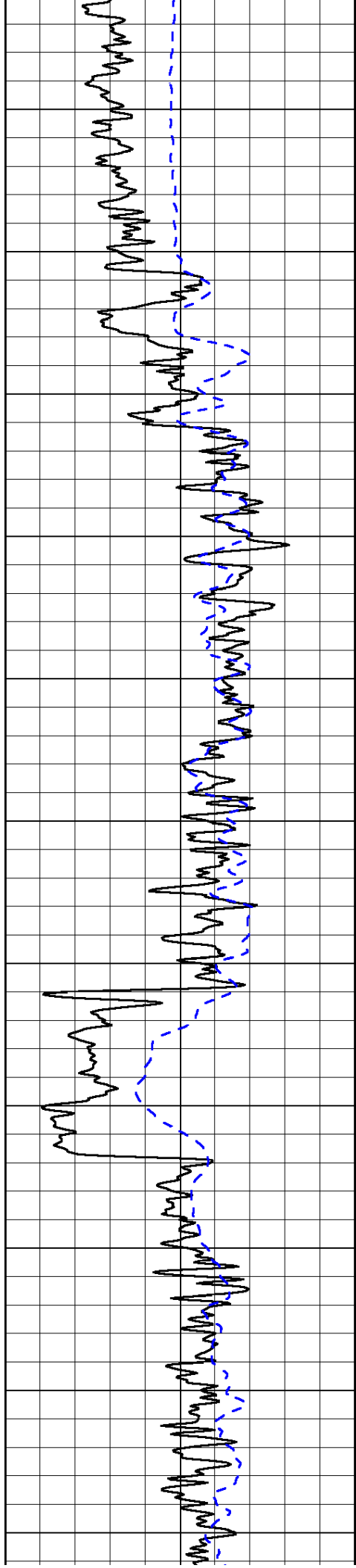
LSPD

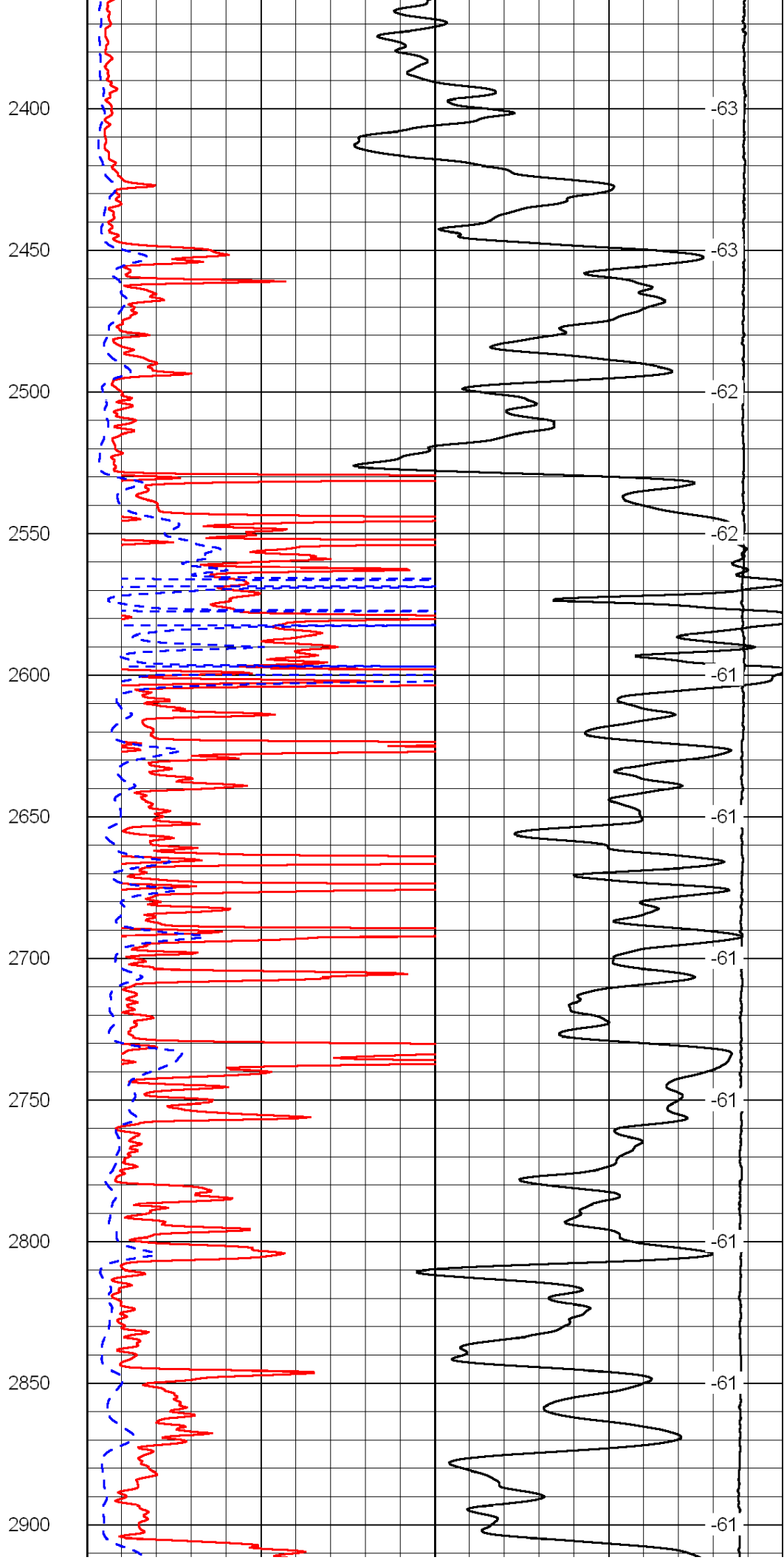
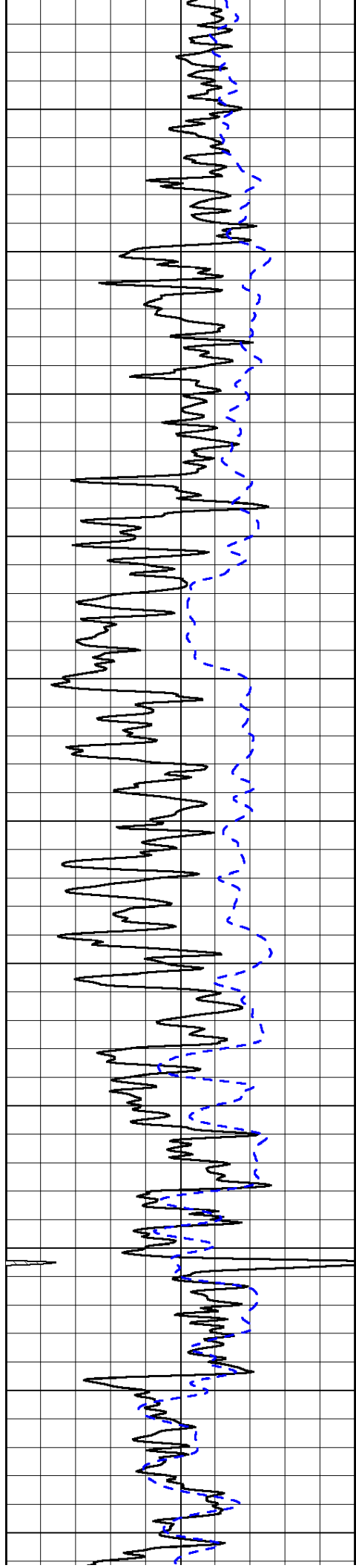
1000	Conductivity	0
15000	Line Tension	0

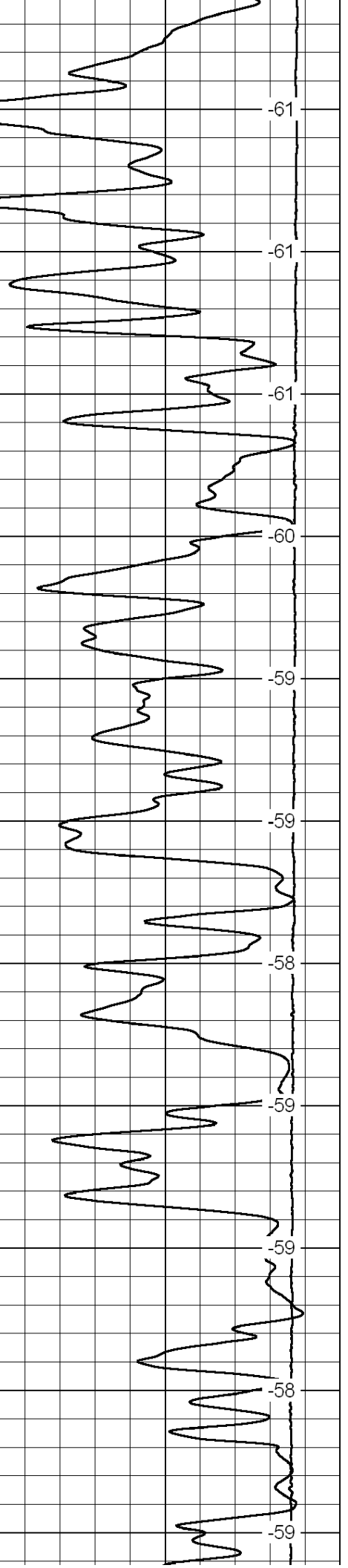
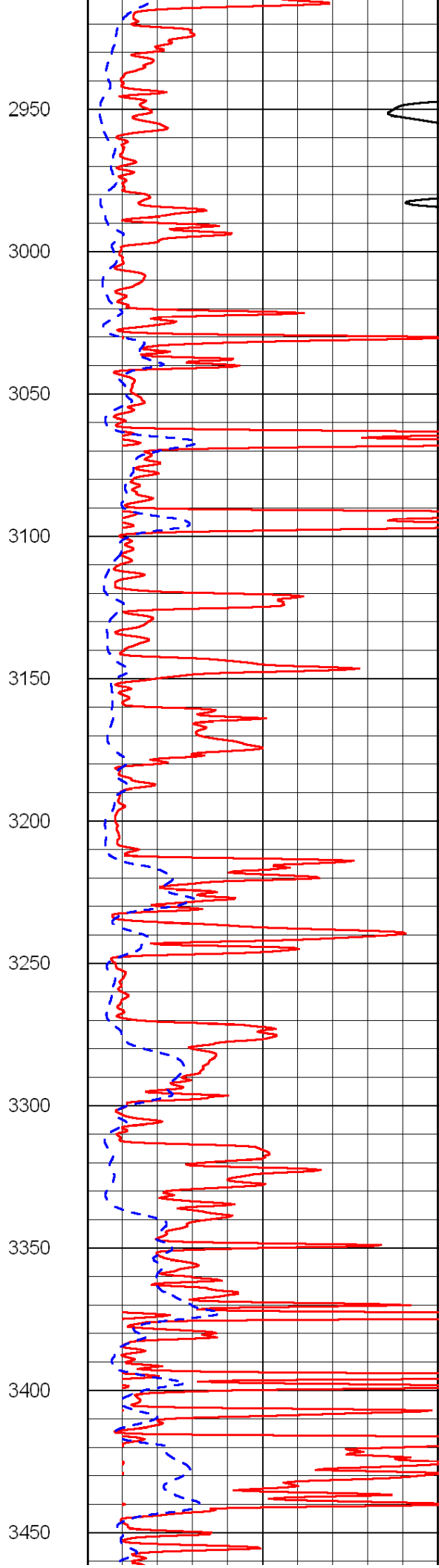
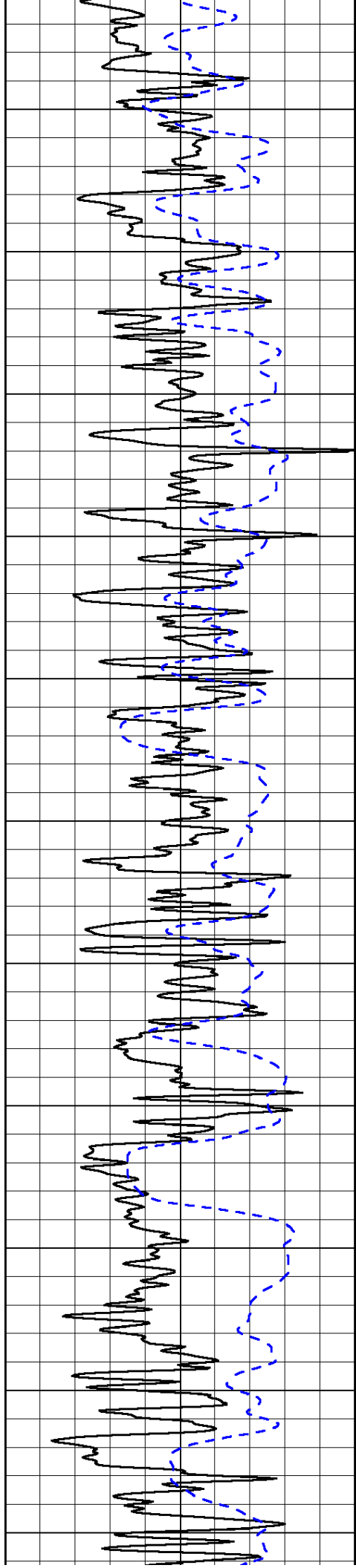
50	Shallow Resistivity	500
50	Deep Resistivity	500

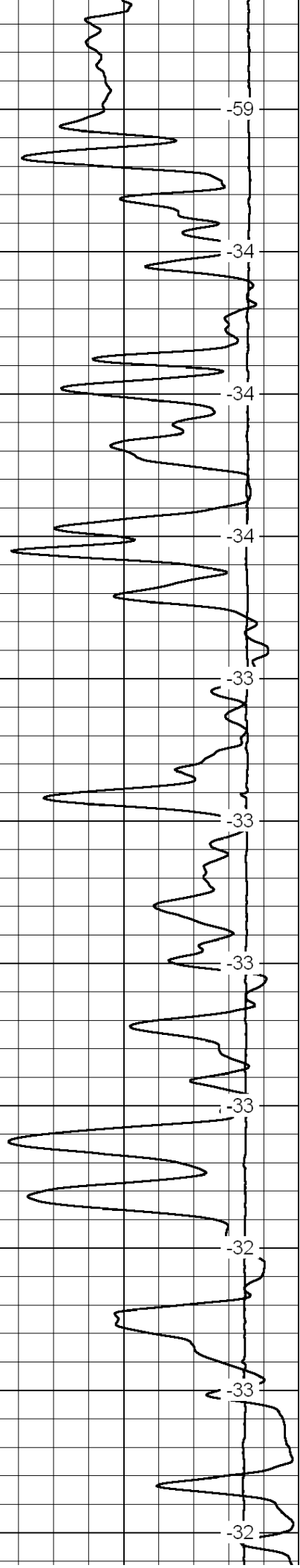
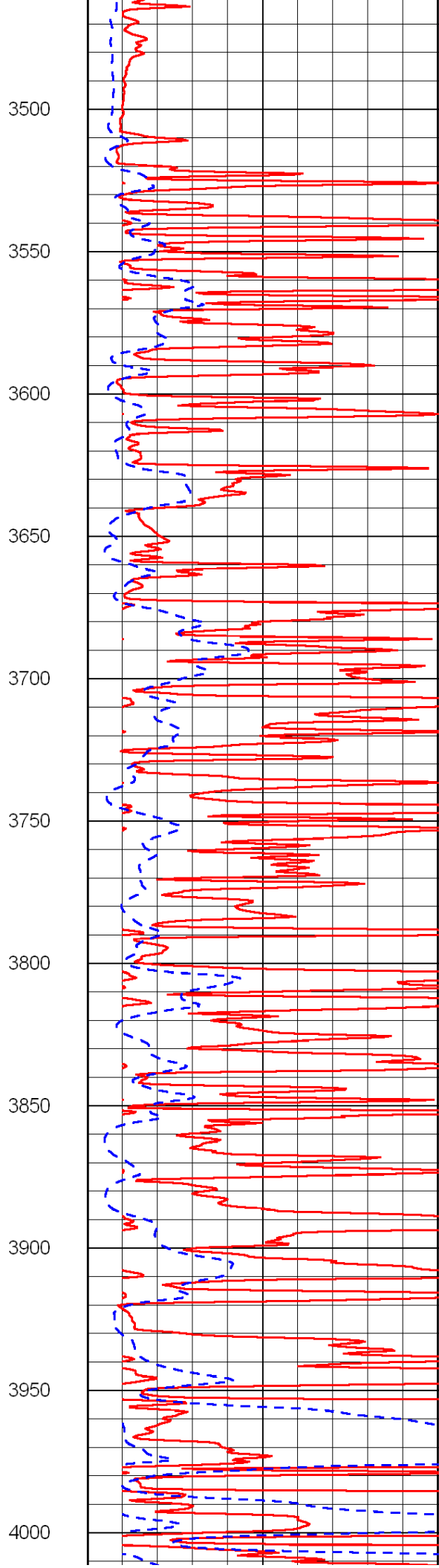
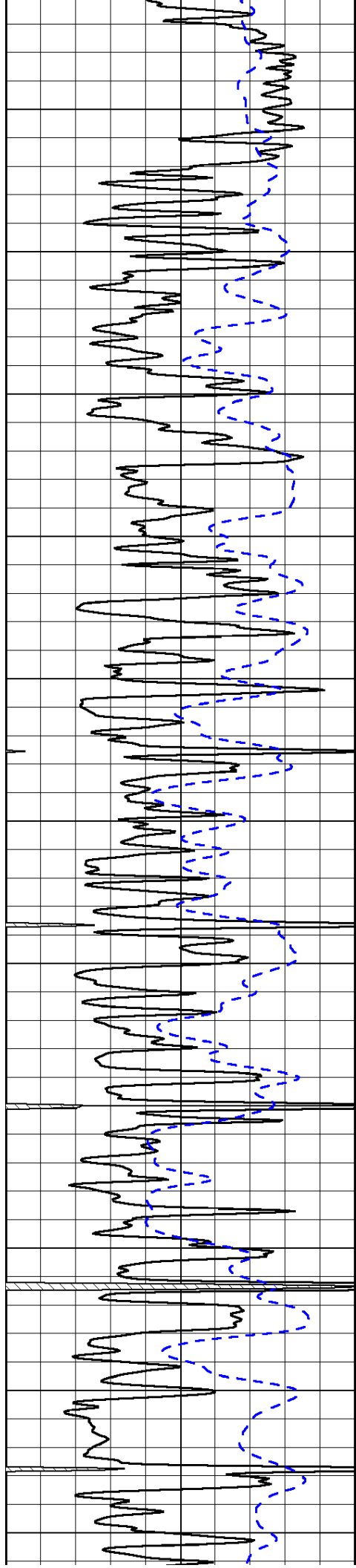


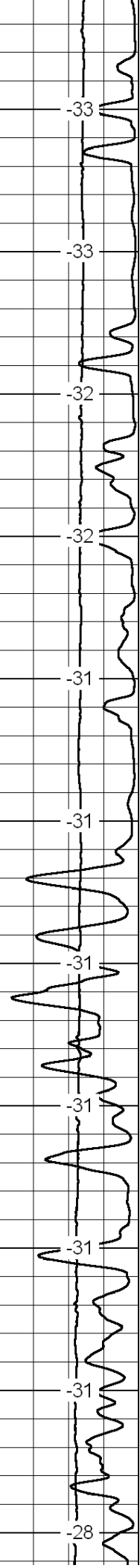
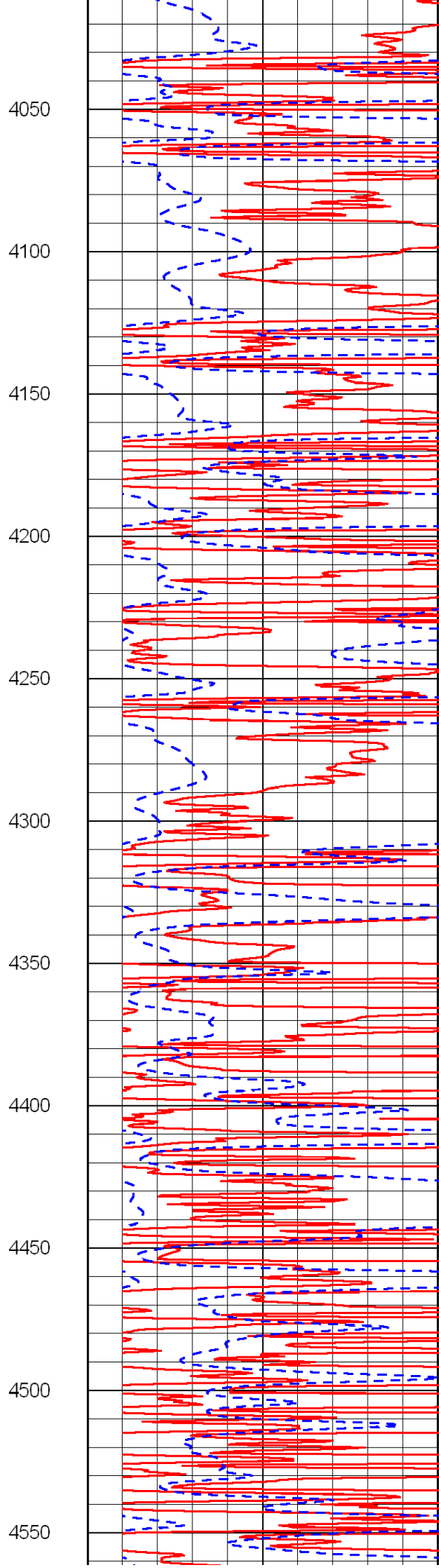
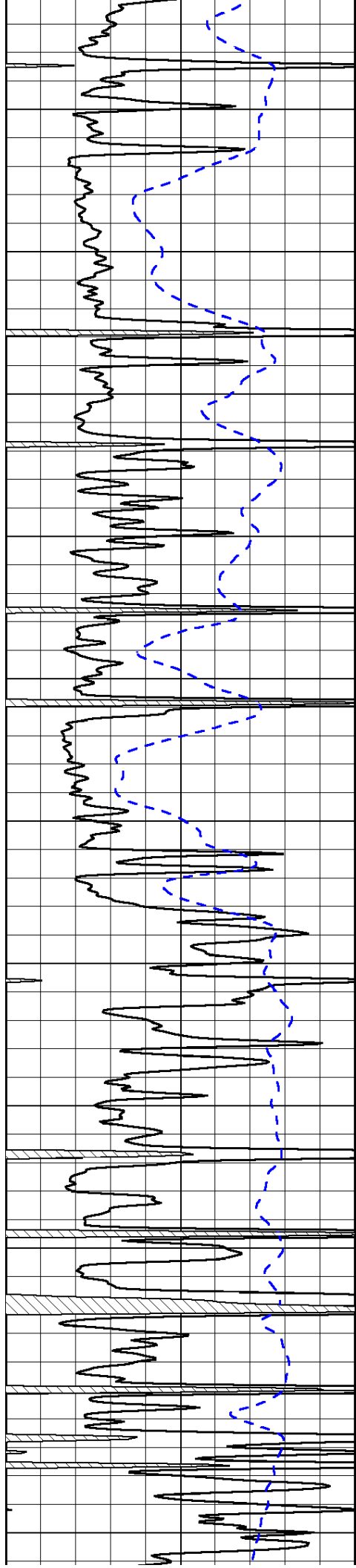


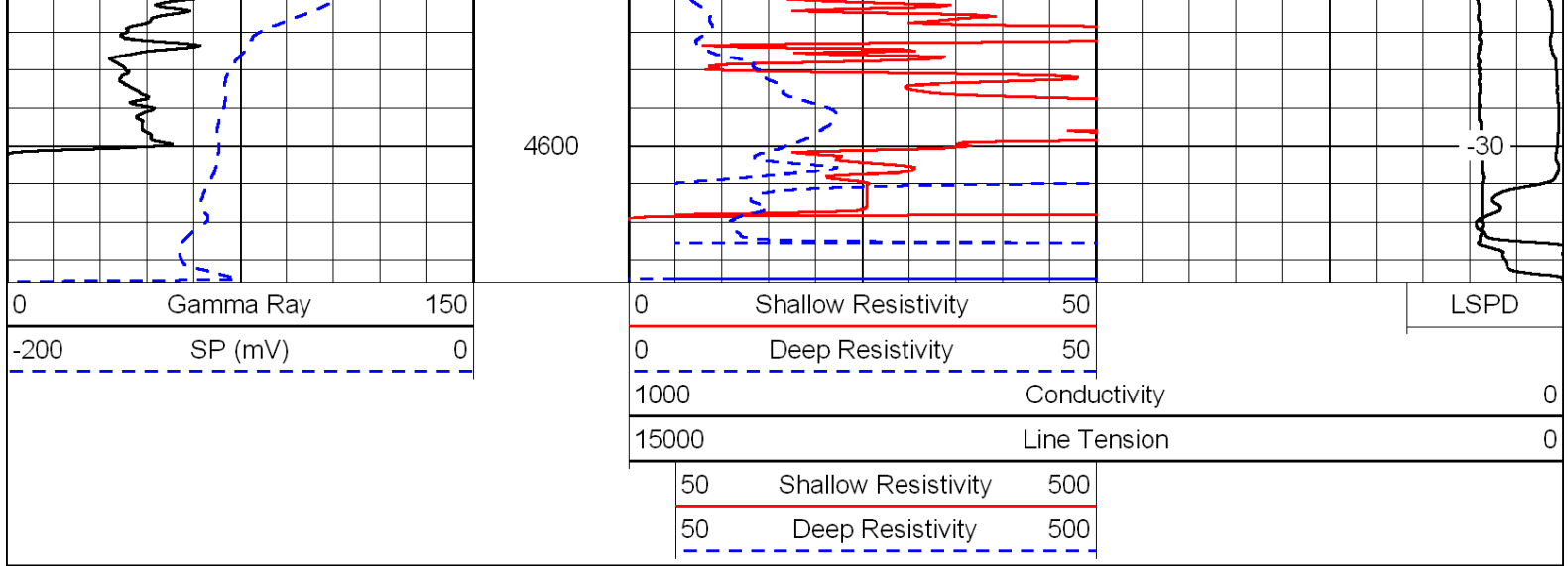




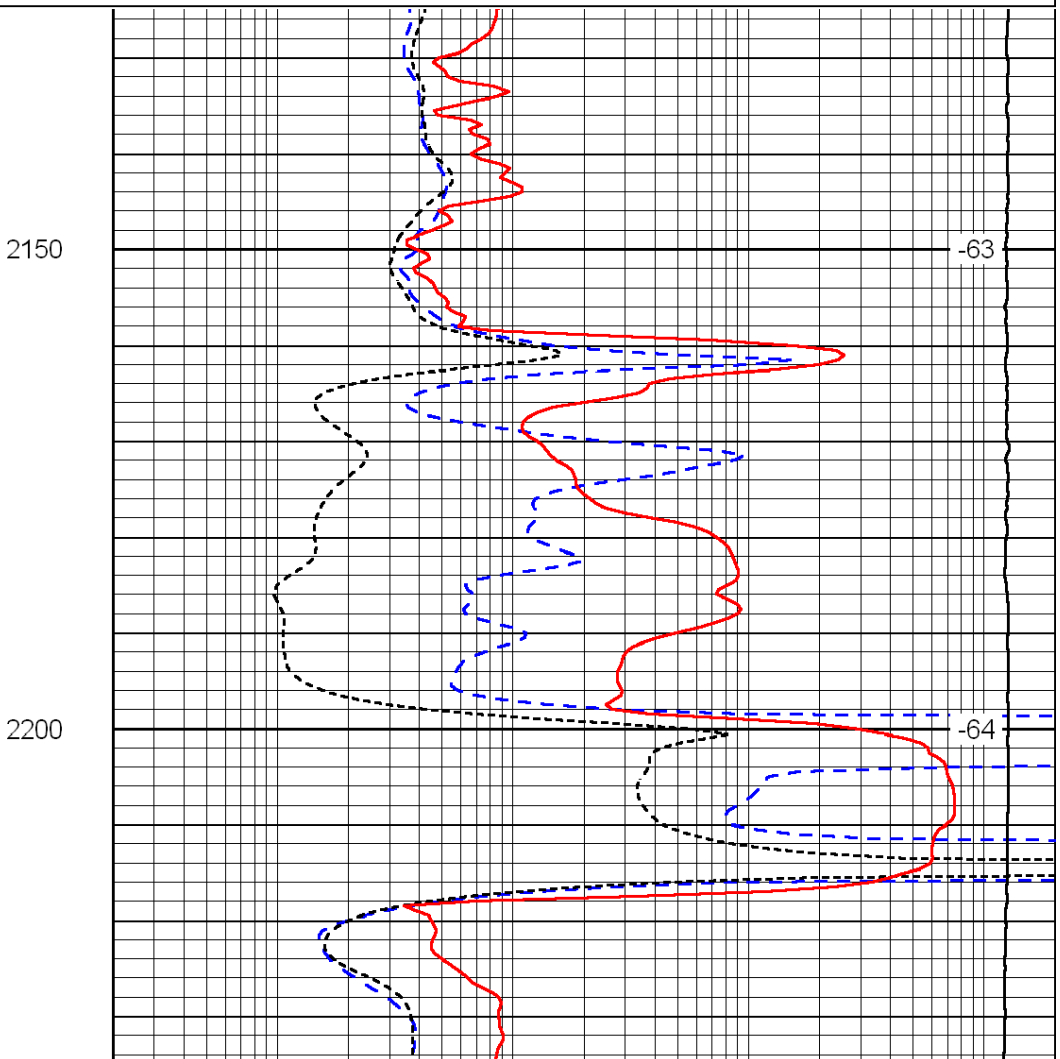
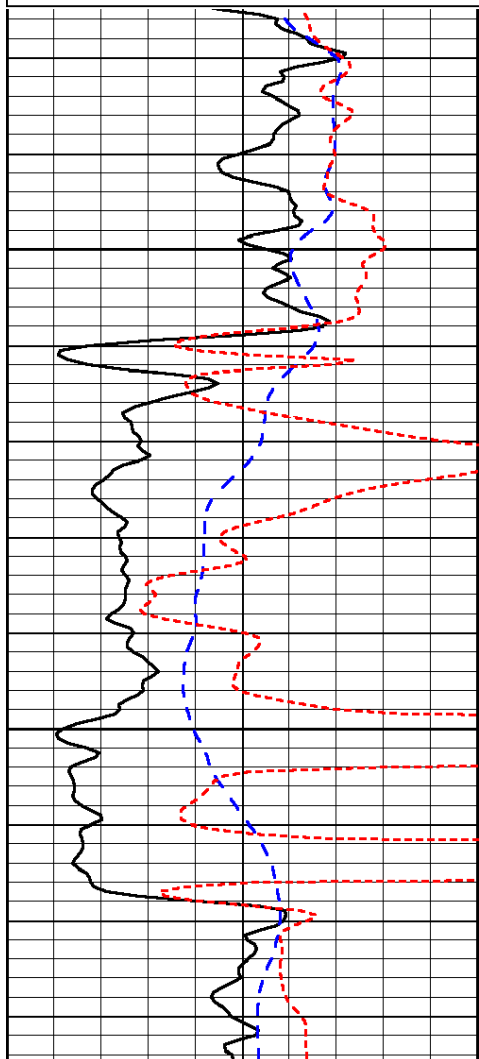
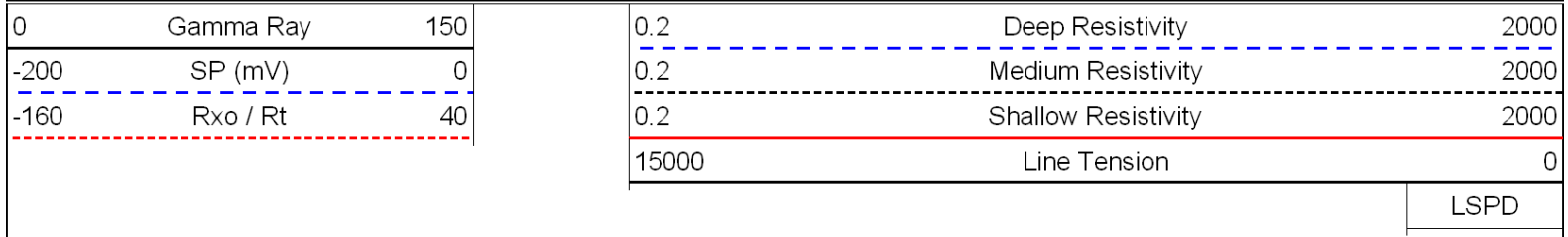


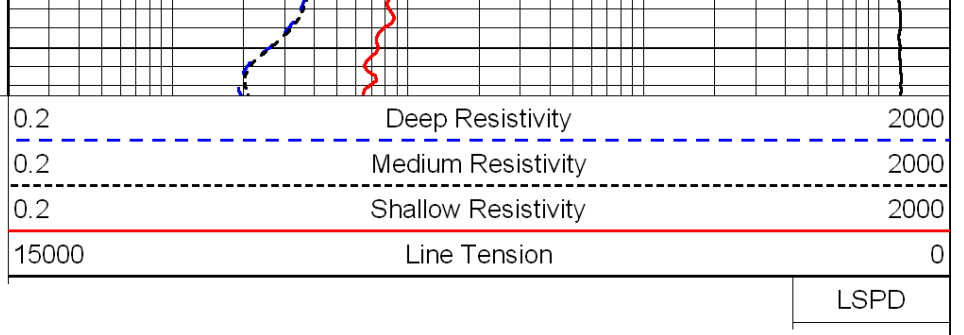
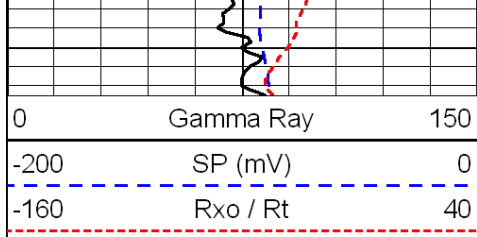




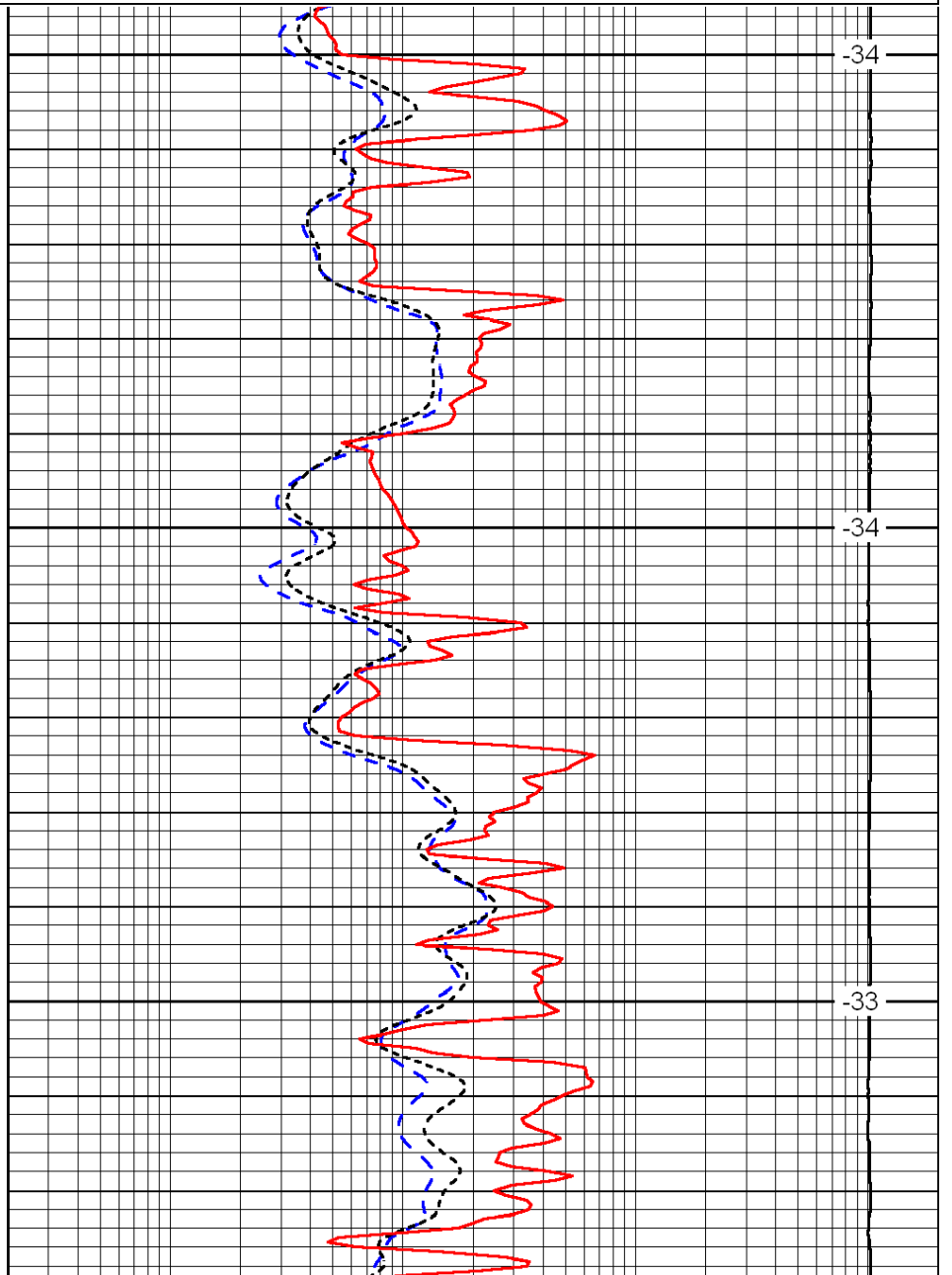
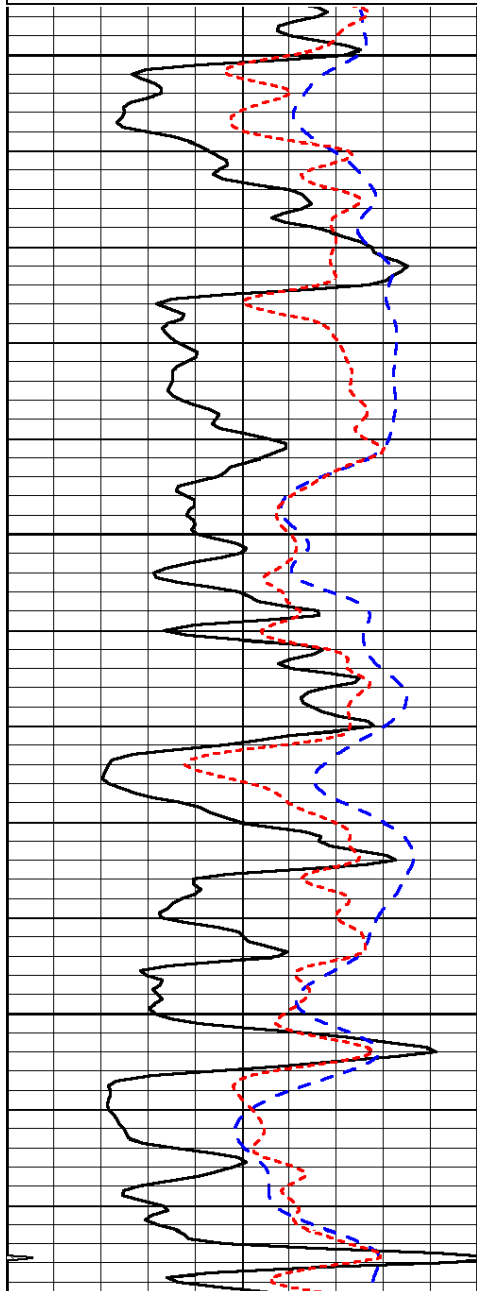
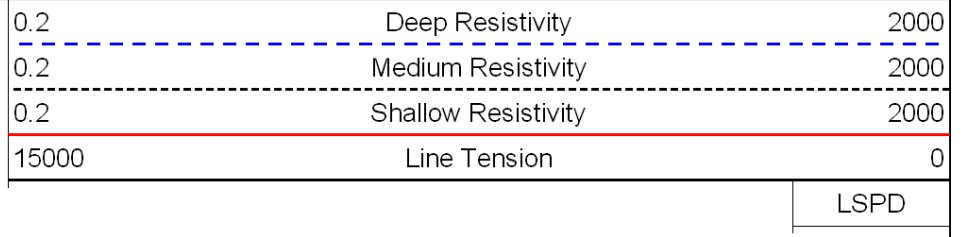
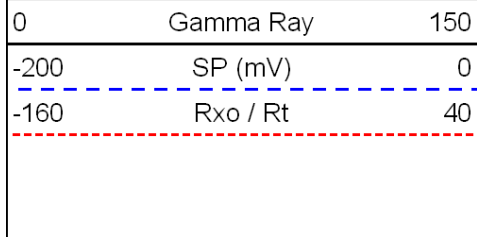


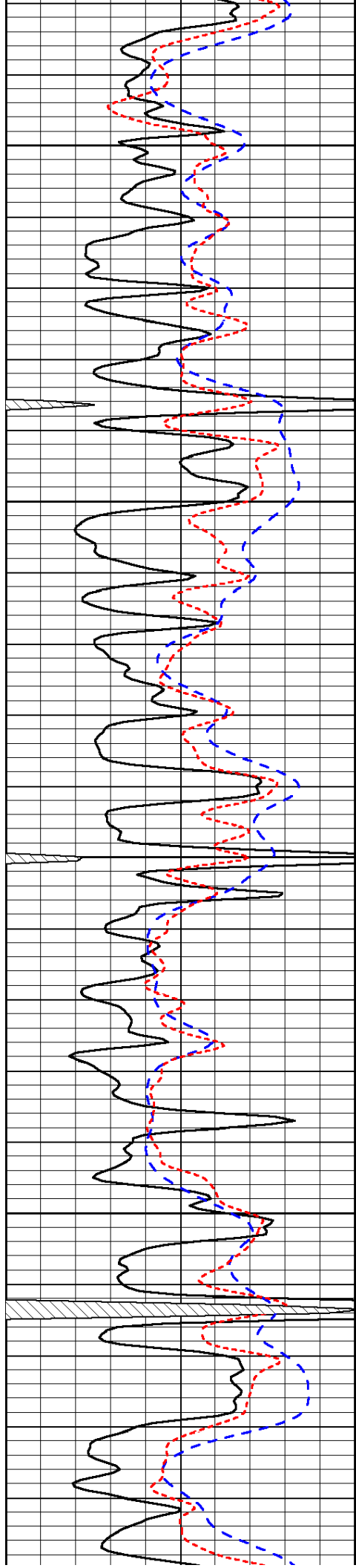
Database File: c:\warrior\data\larson_marit no. 2-24\larson.db
 Dataset Pathname: dil\larstk
 Presentation Format: dil
 Dataset Creation: Mon Jan 03 02:40:00 2011
 Charted by: Depth in Feet scaled 1:240





Database File: c:\warrior\data\larson_marit no. 2-24\larson.db
 Dataset Pathname: dil\larstk
 Presentation Format: dil
 Dataset Creation: Mon Jan 03 02:40:00 2011
 Charted by: Depth in Feet scaled 1:240





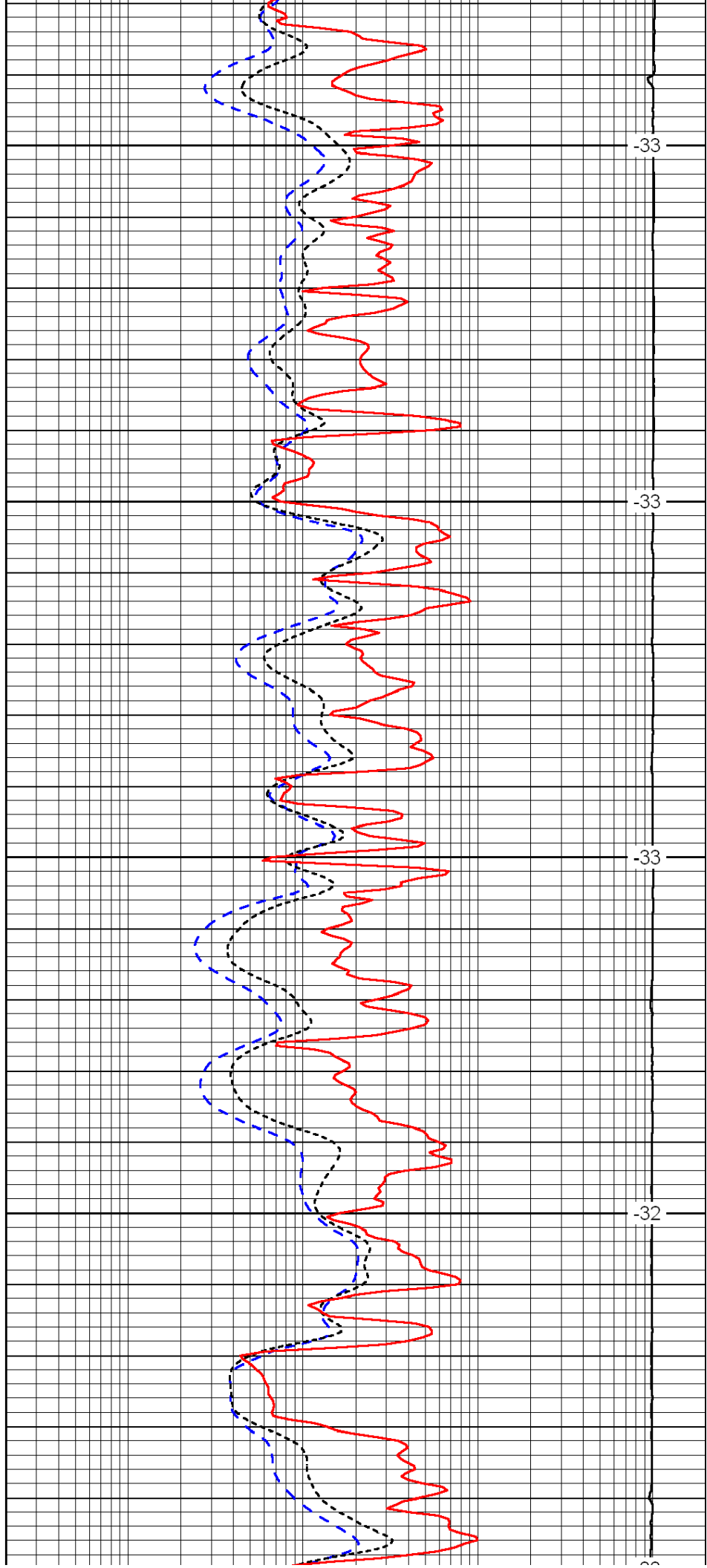
3750

3800

3850

3900

3950



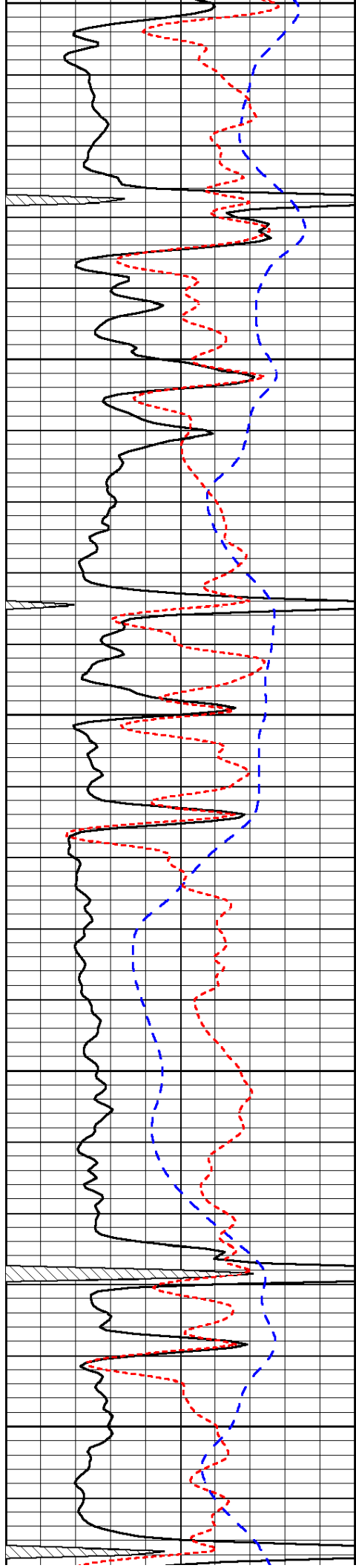
-33

-33

-33

-32

-33



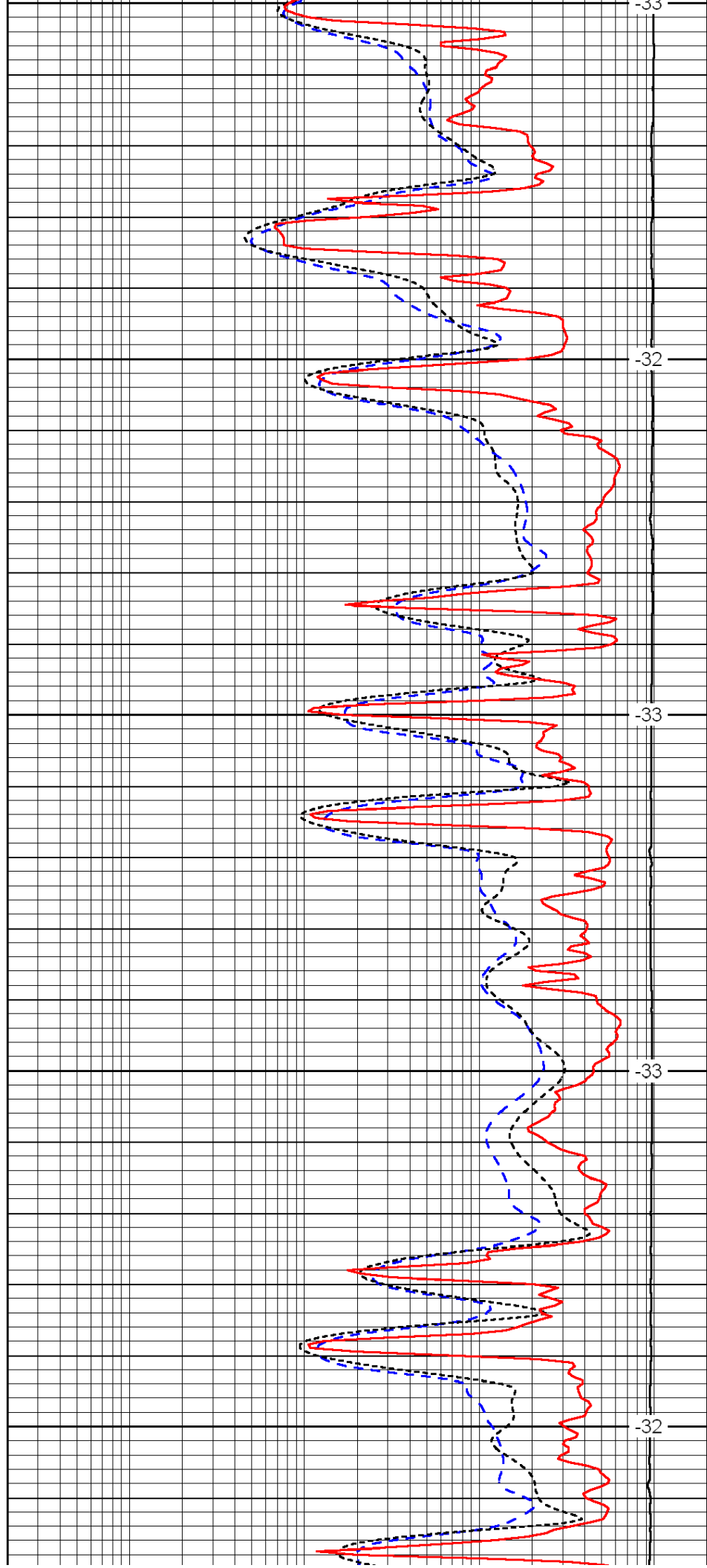
3950

4000

4050

4100

4150



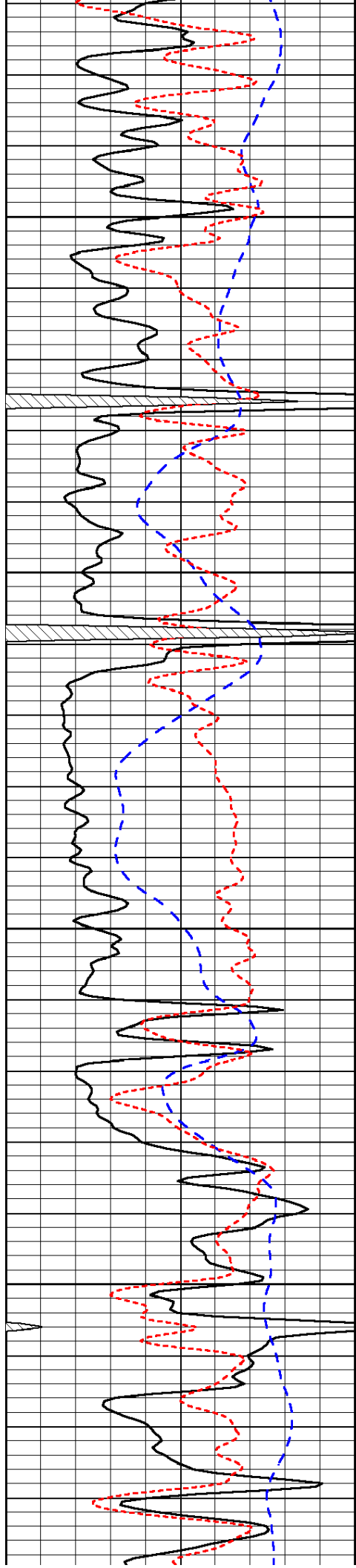
-33

-32

-33

-33

-32

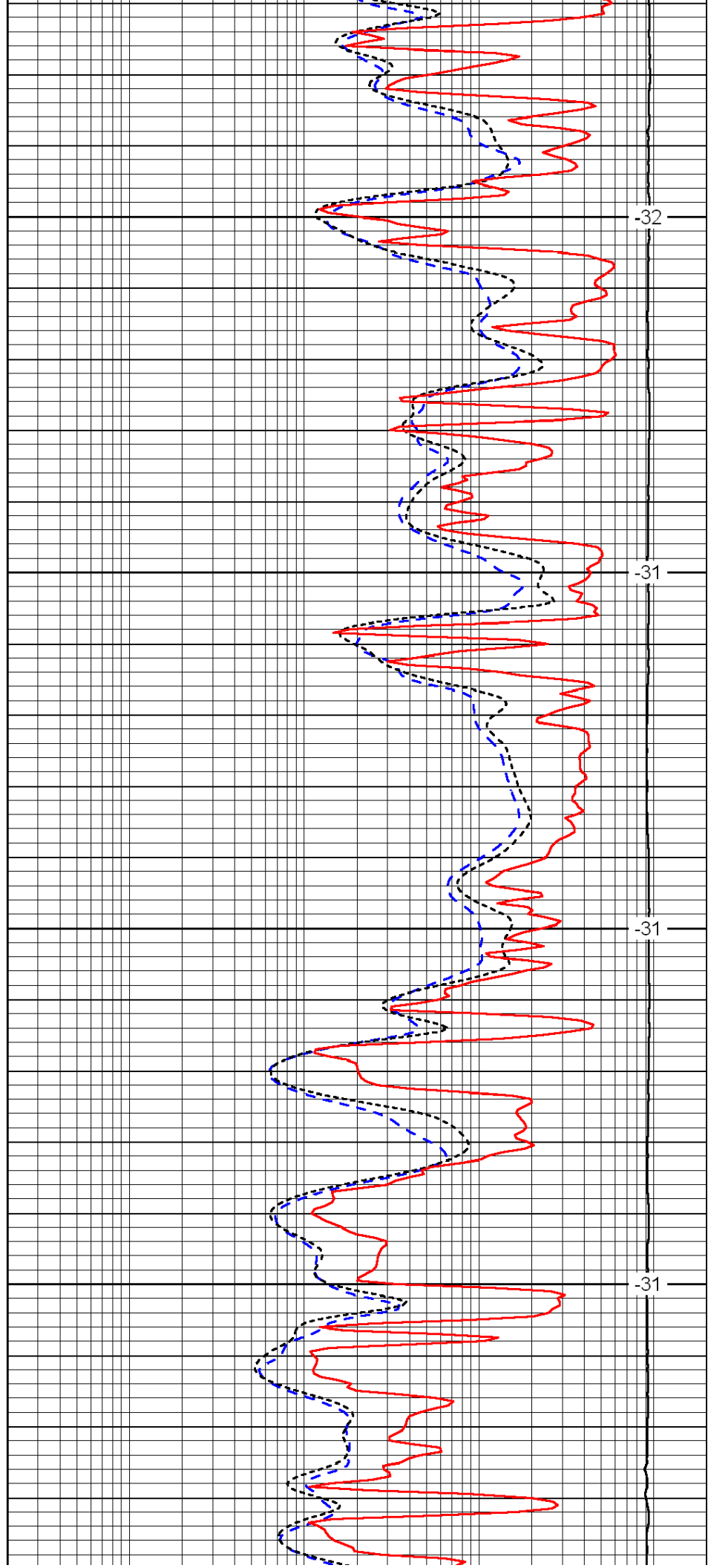


4200

4250

300

4350

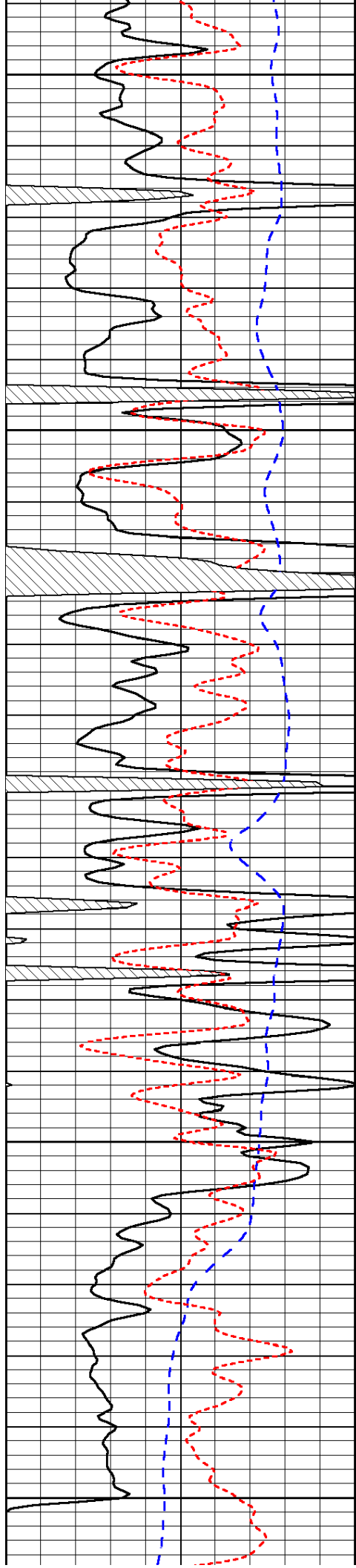


-32

-31

-31

-31



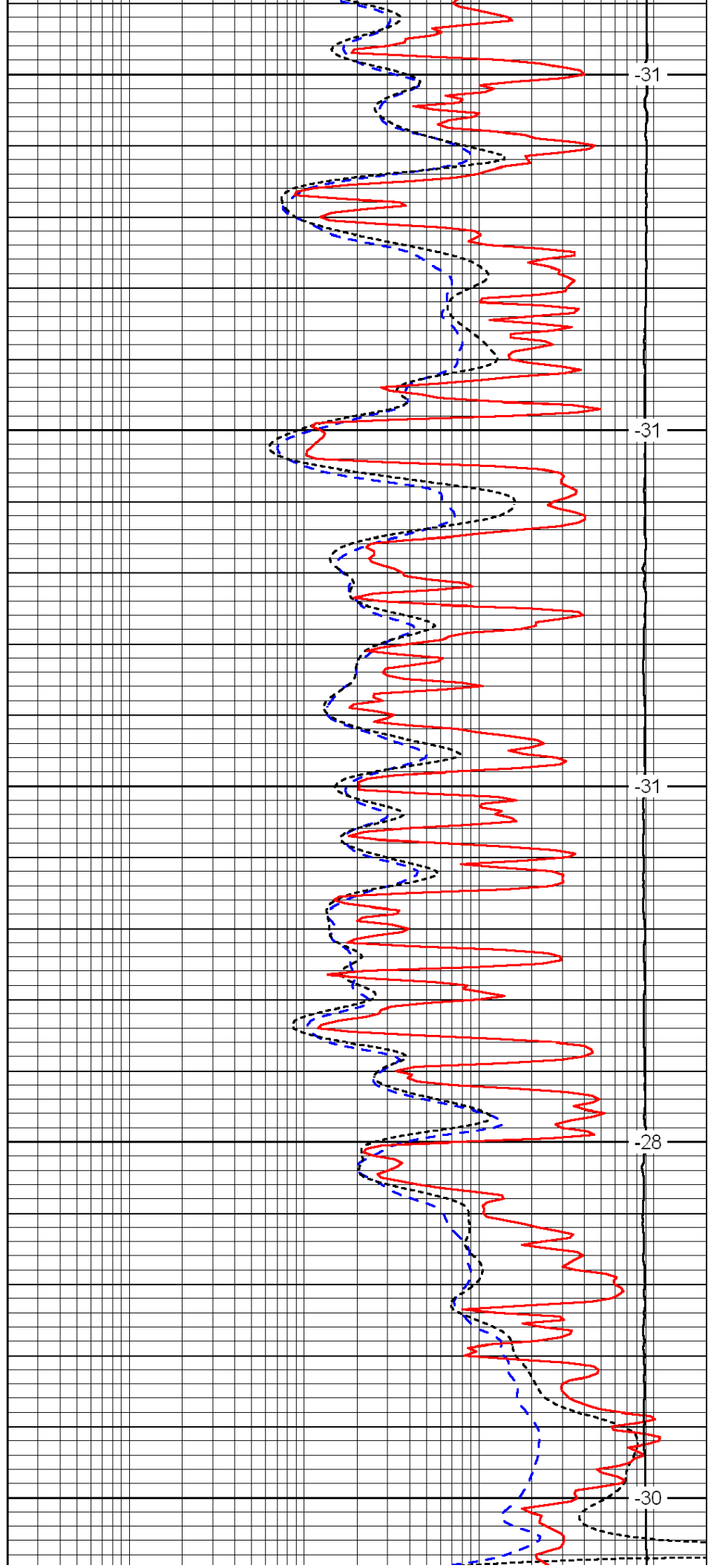
4400

4450

4500

4550

4600



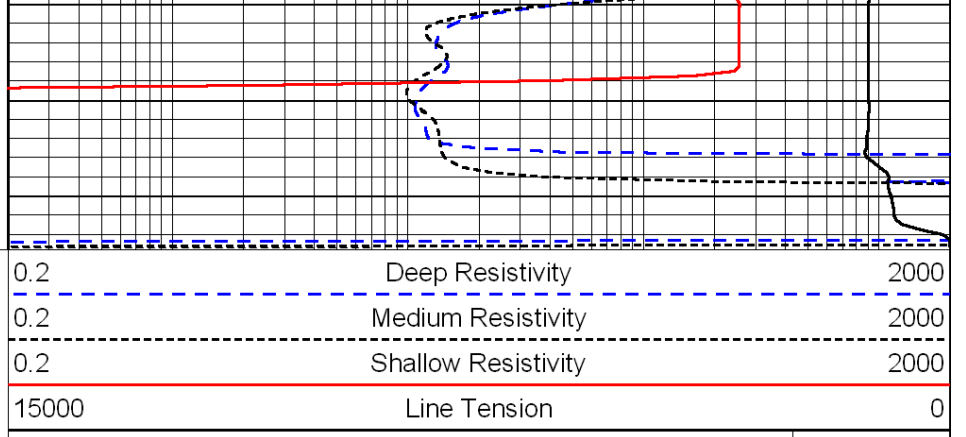
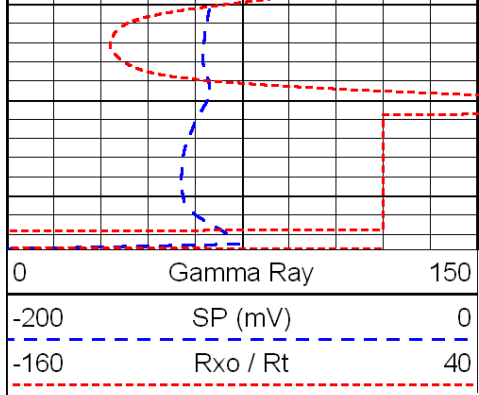
-31

-31

-31

-28

-30



LSPD