



# Microresistivity Log

**DIGITAL LOG** (785) 625-3858

API No.	15-101-22,268-00-00		
Company	Larson Engineering, Inc.		
Well	Marit No. 2-24		
Field	Wildcat		
County	Lane	State	Kansas
Location	NW SE NE NW 768' FNL & 2,242' FWL		
Sec: 24	Twp: 18 S	Rge: 30 W	Other Services CNL/CDL DIL/BHCS
Permanent Datum	Ground Level	Elevation	Elevation
Log Measured From	Kelly Bushing	7 Ft. Above Perm. Datum	K.B. 2849
Drilling Measured From	Kelly Bushing		D.F. 2842
			G.L. 2842

Date	1/2/2011
Run Number	One
Depth Driller	4617
Depth Logger	4626
Bottom Logged Interval	4625
Top Log Interval	3600
Casing Driller	8.625 @ 256
Casing Logger	255
Bit Size	7.875
Type Fluid in Hole	Chemical
Salinity, ppm CL	2600
Density / Viscosity	9.5   54
pH / Fluid Loss	11   7.6
Source of Sample	Flowline
Rm @ Meas. Temp	1.05 @ 53
Rmf @ Meas. Temp	.79 @ 53
Rmc @ Meas. Temp	1.42 @ 53
Source of Rmf / Rmc	Charts
Rm @ BHT	.46 @ 122
Operating Rig Time	5 Hours
Max Rec. Temp. F	122
Equipment Number	10
Location	Hays
Recorded By	J Schuler
Witnessed By	Vern Schrag
	J Long

<<< Fold Here >>>

All interpretations are opinions based on inferences from electrical or other measurements and we cannot and do not guarantee the accuracy or correctness of any interpretation, and we shall not, except in the case of gross or willful negligence on our part, be liable or responsible for any loss, costs, damages, or expenses incurred or sustained by anyone resulting from any interpretation made by any of our officers, agents or employees. These interpretations are also subject to our general terms and conditions set out in our current Price Schedule.

### Comments

Thank you for using Log-Tech, Inc.  
(785) 625-3858

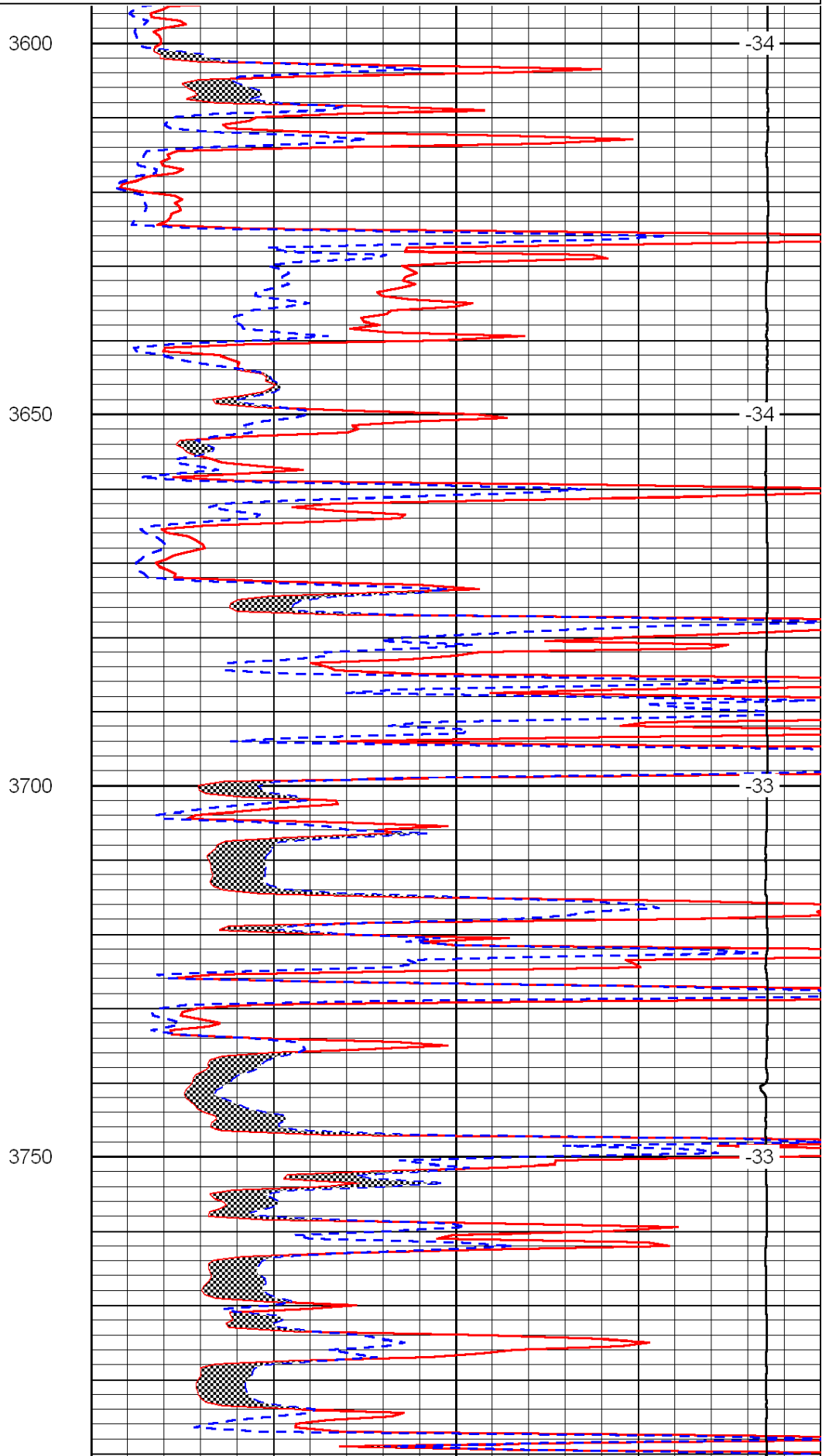
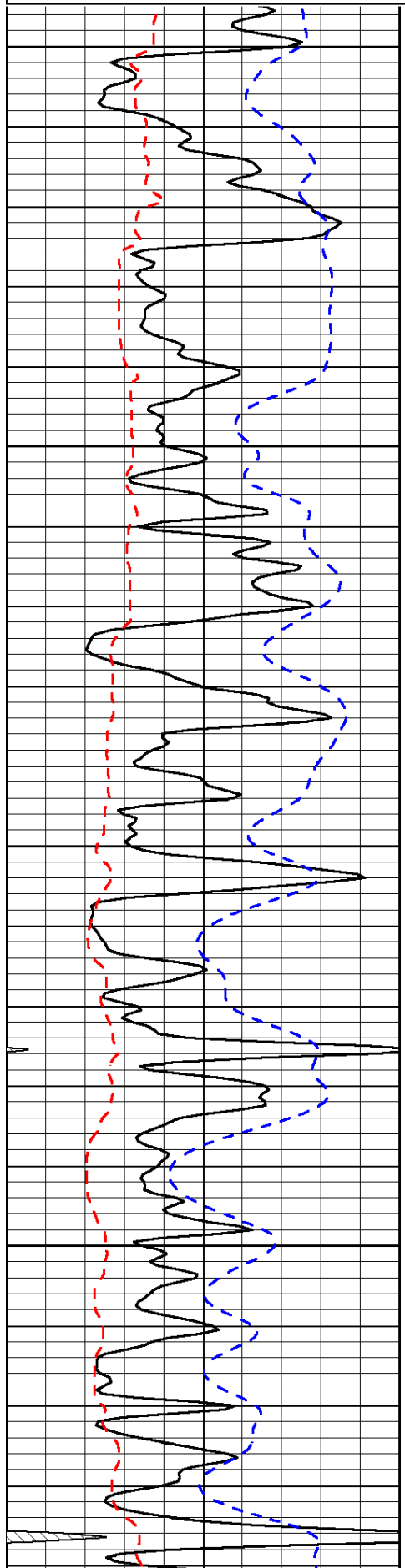
Dighton, 7 West to Eagle Road, South 1/8th Mile, East Into

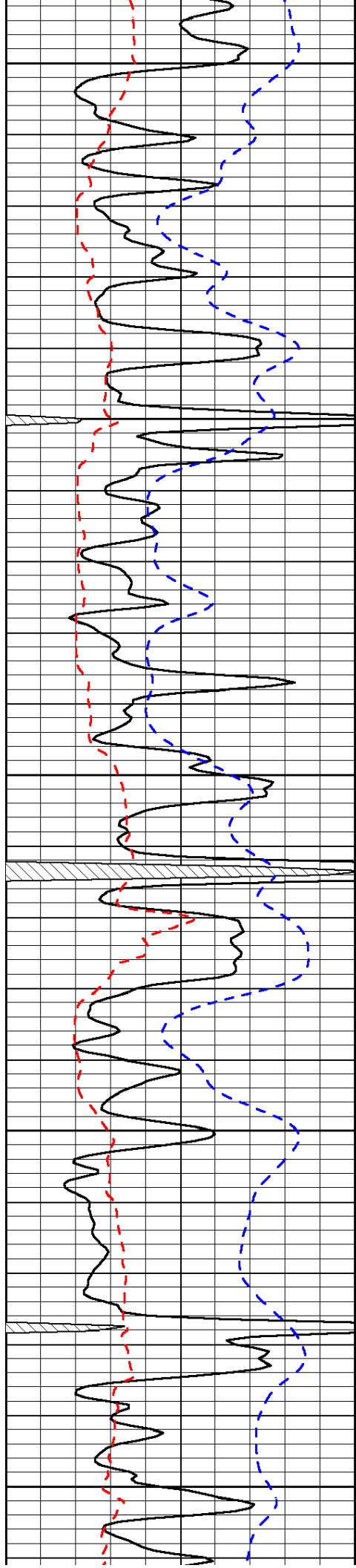
Database File: c:\warrior\data\larson\_marit no. 2-24\larson.db  
 Dataset Pathname: dil\larstk  
 Presentation Format: micro  
 Dataset Creation: Mon Jan 03 02:40:00 2011  
 Charted by: Depth in Feet scaled 1:240

0	Gamma Ray	150
6	Micro Log Caliper (GAPI)	16
-200	SP (mV)	0

0	Micro Inverse 1 X 1	40
0	Micro Normal 2"	40
15000	Line Weight	0

LSPD





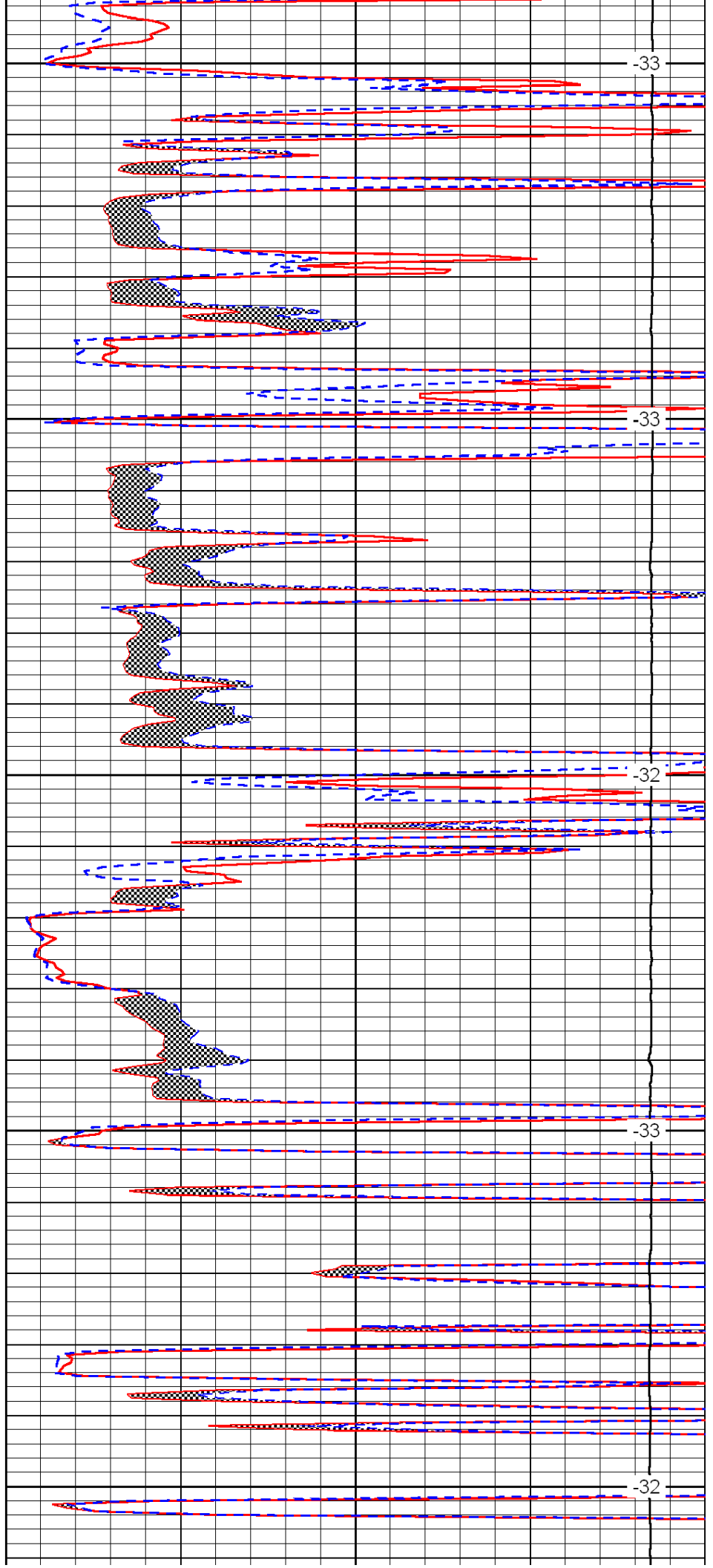
3800

3850

3900

3950

4000



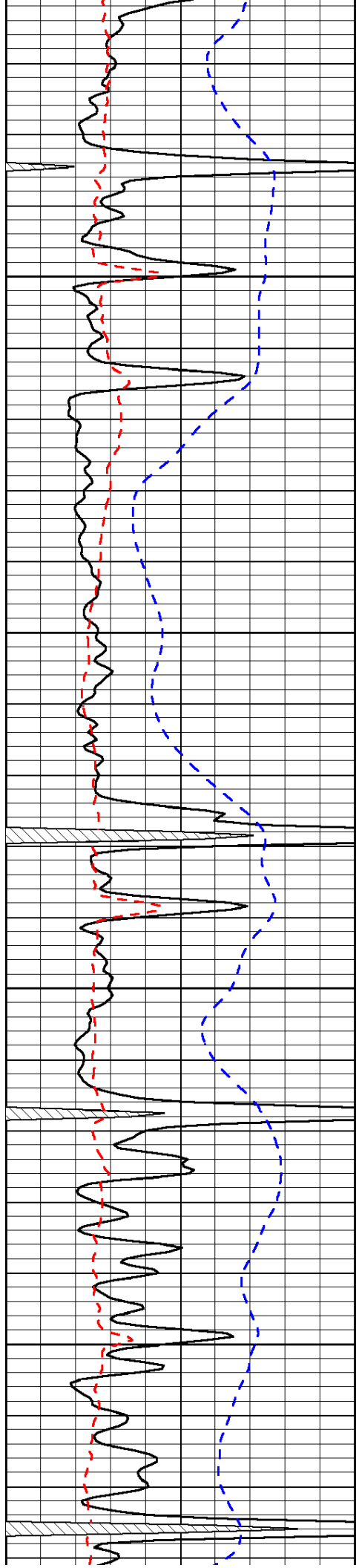
-33

-33

-32

-33

-32

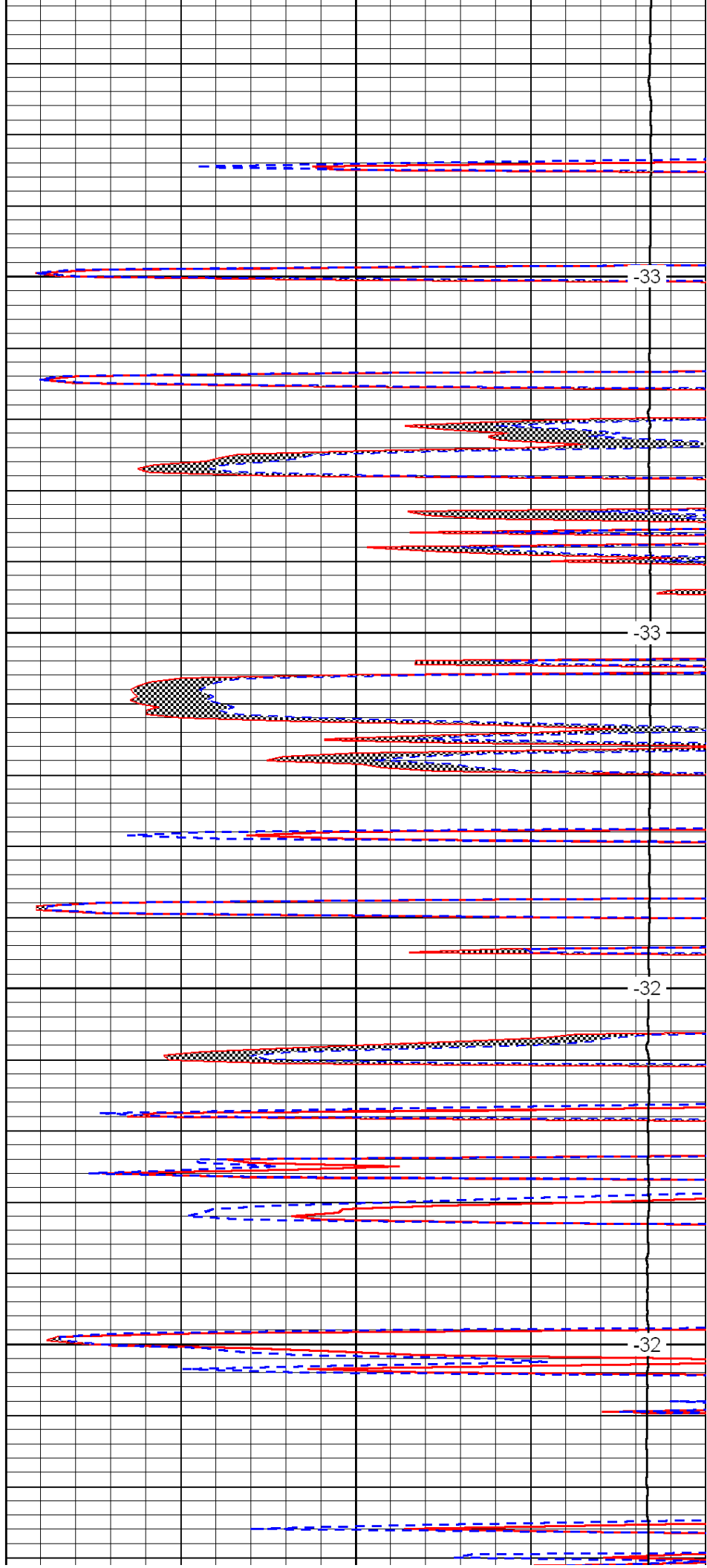


4050

4100

4150

4200

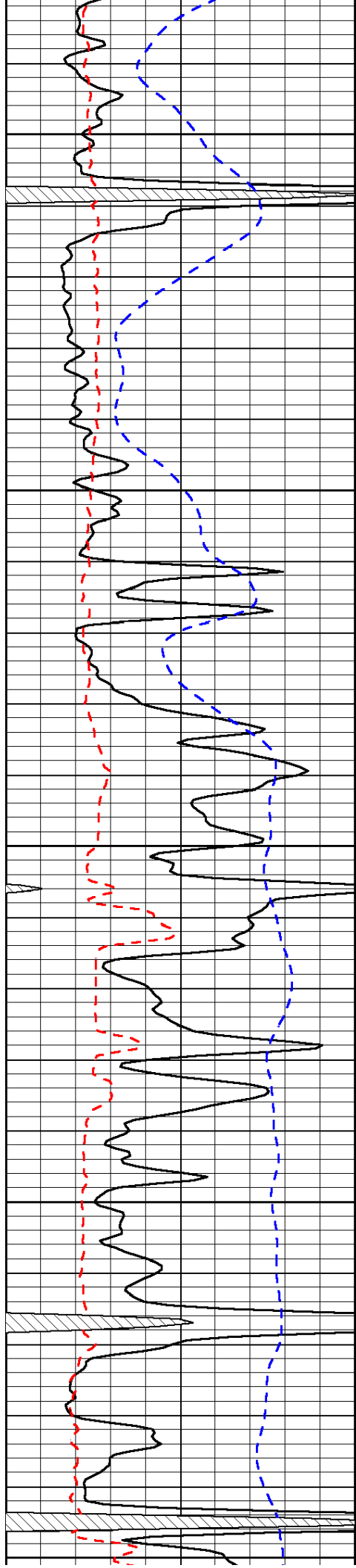


-33

-33

-32

-32



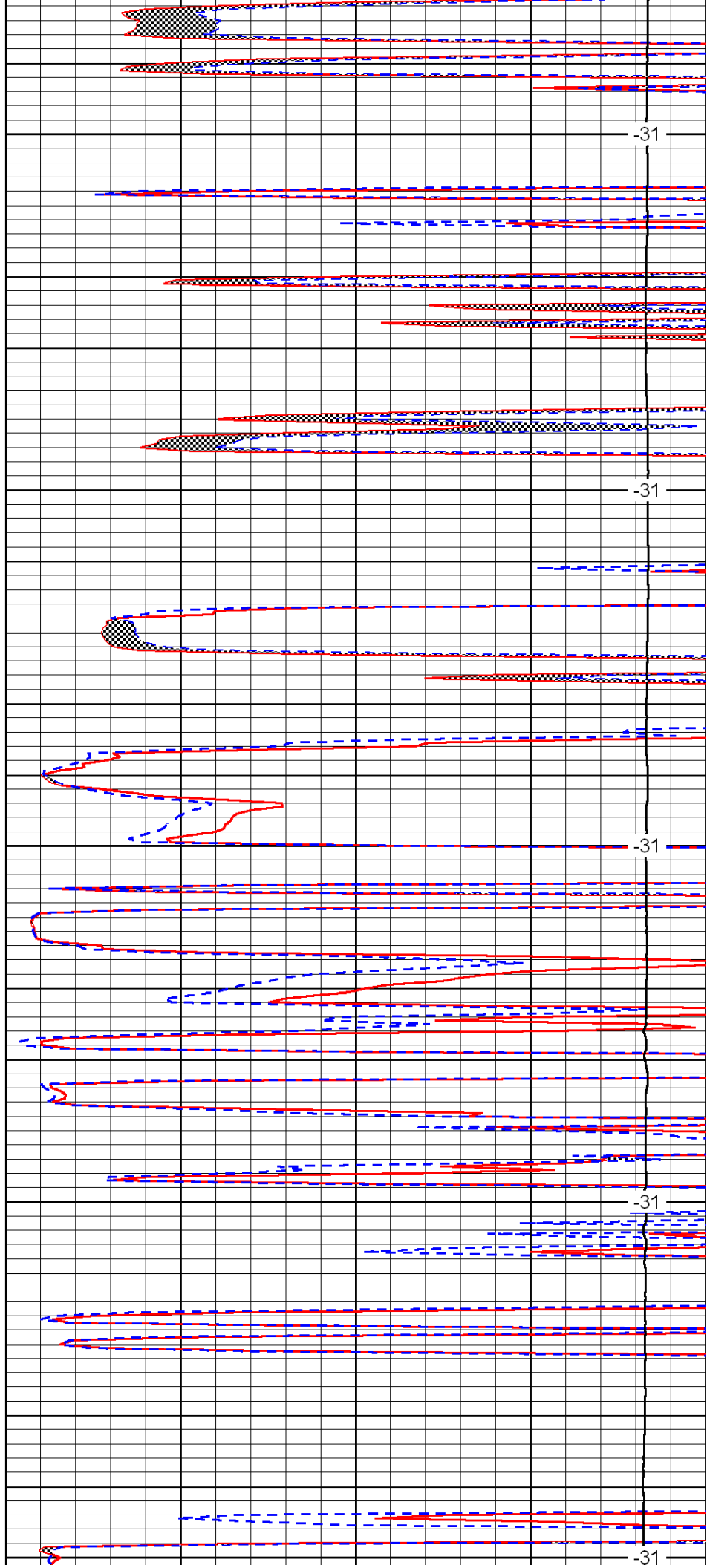
4250

4300

4350

4400

4450



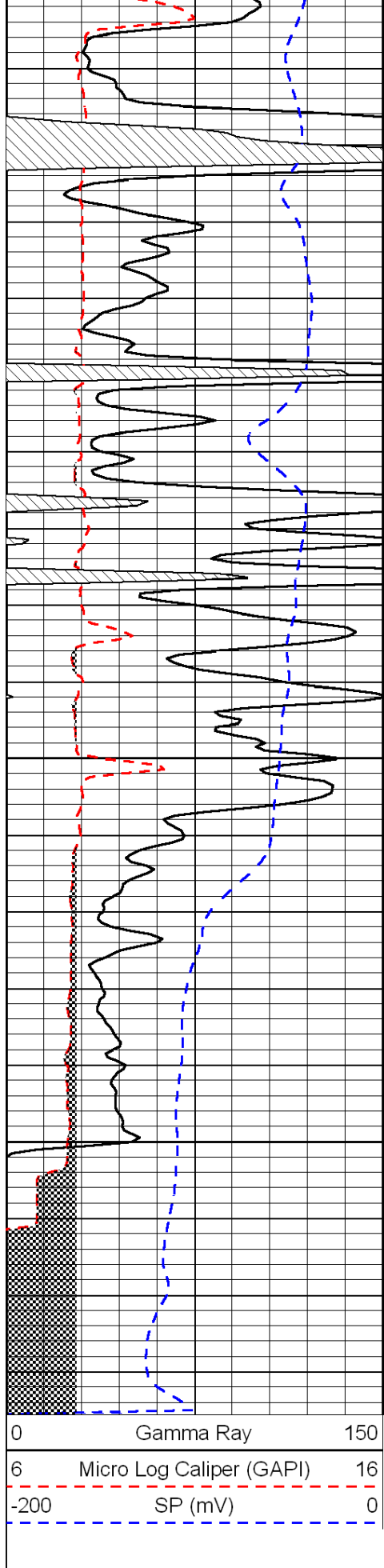
-31

-31

-31

-31

-31

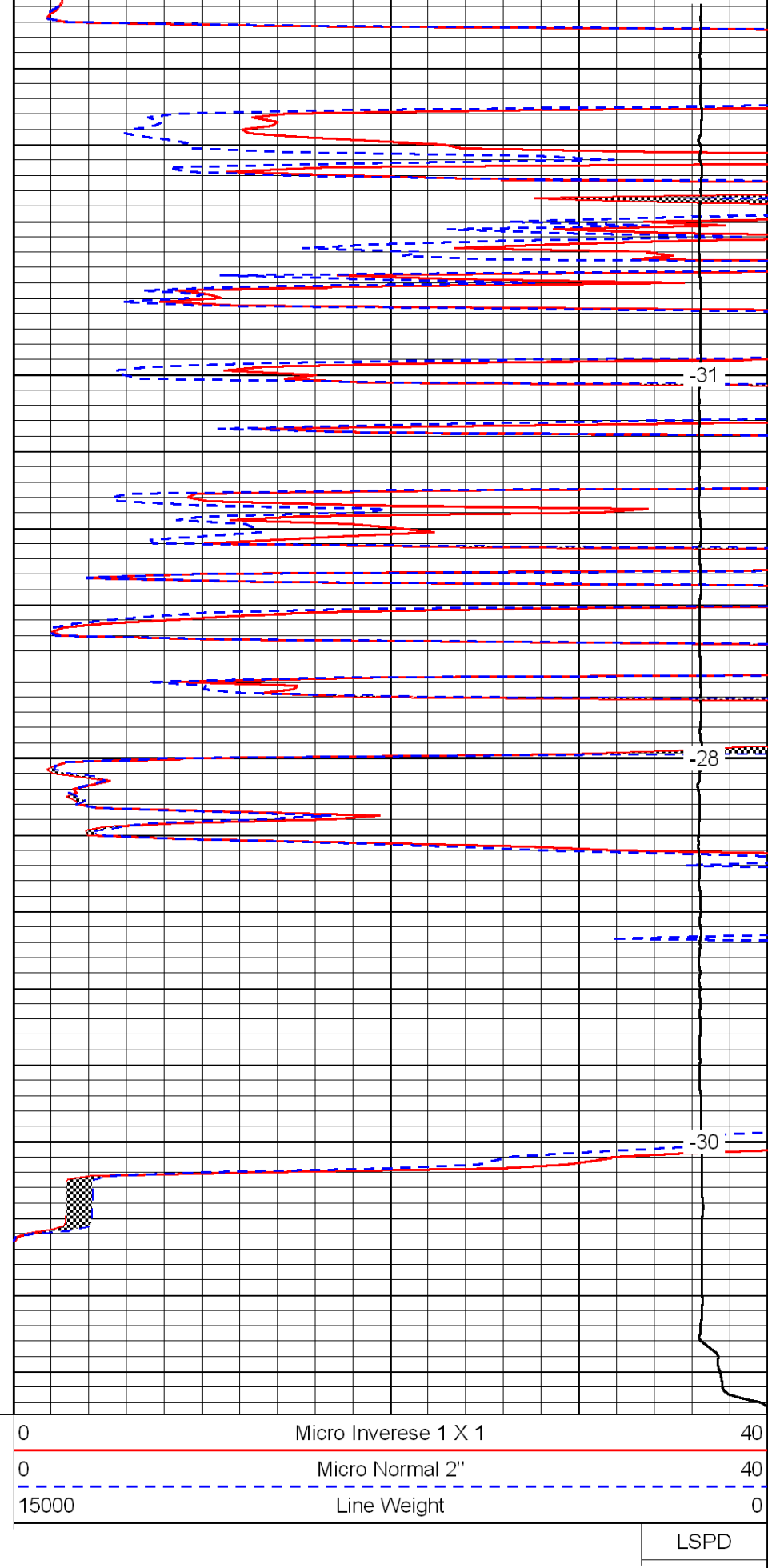


4500

4550

4600

0	Gamma Ray	150
6	Micro Log Caliper (GAPI)	16
-200	SP (mV)	0



-31

-28

-30

0	Micro Inverse 1 X 1	40
0	Micro Normal 2''	40
15000	Line Weight	0

LSPD