



Dual Induction Log

DIGITAL LOG (785) 625-3858

API No.	15-009-25,529-00-00	
Company	Reif Oil and Gas Company, LLC.	
Well	Huslig No. 2	
Field	Huslig	
County	Barton	State
		Kansas
Location	NW SW SE 930' FSL & 2,310' FEL	
Sec: 13	Twp: 17 S	Rge: 12 W
Permanent Datum	Ground Level	Elevation 1830
Log Measured From	Kelly Bushing	7 Ft. Above Perm. Datum
Drilling Measured From	Kelly Bushing	
		Other Services CNL/CDL MEL/BHCS
		Elevation K.B. 1837 D.F. G.L. 1830

Date	3/23/2011	
Run Number	One	
Depth Driller	3360	
Depth Logger	3363	
Bottom Logged Interval	3362	
Top Log Interval	350	
Casing Driller	8.625 @ 366	
Casing Logger	367	
Bit Size	8.625	
Type Fluid in Hole	Chemical	
Salinity, ppm CL	7900	
Density / Viscosity	9.3	50
pH / Fluid Loss	10.5	9.2
Source of Sample	Flowline	
Rm @ Meas. Temp	.54	@ 69
Rmf @ Meas. Temp	.41	@ 69
Rmc @ Meas. Temp	.73	@ 69
Source of Rmf / Rmc	Charts	
Rm @ BHT	.34	@ 110
Operating Rig Time	5 Hours	
Max Rec. Temp. F	110	
Equipment Number	10	
Location	Hays	
Recorded By	Jim Schuler	
Witnessed By	Jim Musgrove	Josh Austin
		Don Reif

<<< Fold Here >>>

All interpretations are opinions based on inferences from electrical or other measurements and we cannot and do not guarantee the accuracy or correctness of any interpretation, and we shall not, except in the case of gross or willful negligence on our part, be liable or responsible for any loss, costs, damages, or expenses incurred or sustained by anyone resulting from any interpretation made by any of our officers, agents or employees. These interpretations are also subject to our general terms and conditions set out in our current Price Schedule.

Comments

Thank you for using Log-Tech, Inc.
(785) 625-3858

Odin, Kansas, 1/2 East, North Into

Database File: c:\warrior\data\reif_huslig no. 2\reif_huslig_2hd.db
 Dataset Pathname: DIL/reistk3
 Presentation Format: dil2in
 Dataset Creation: Wed Mar 23 16:45:31 2011
 Charted by: Depth in Feet scaled 1:600

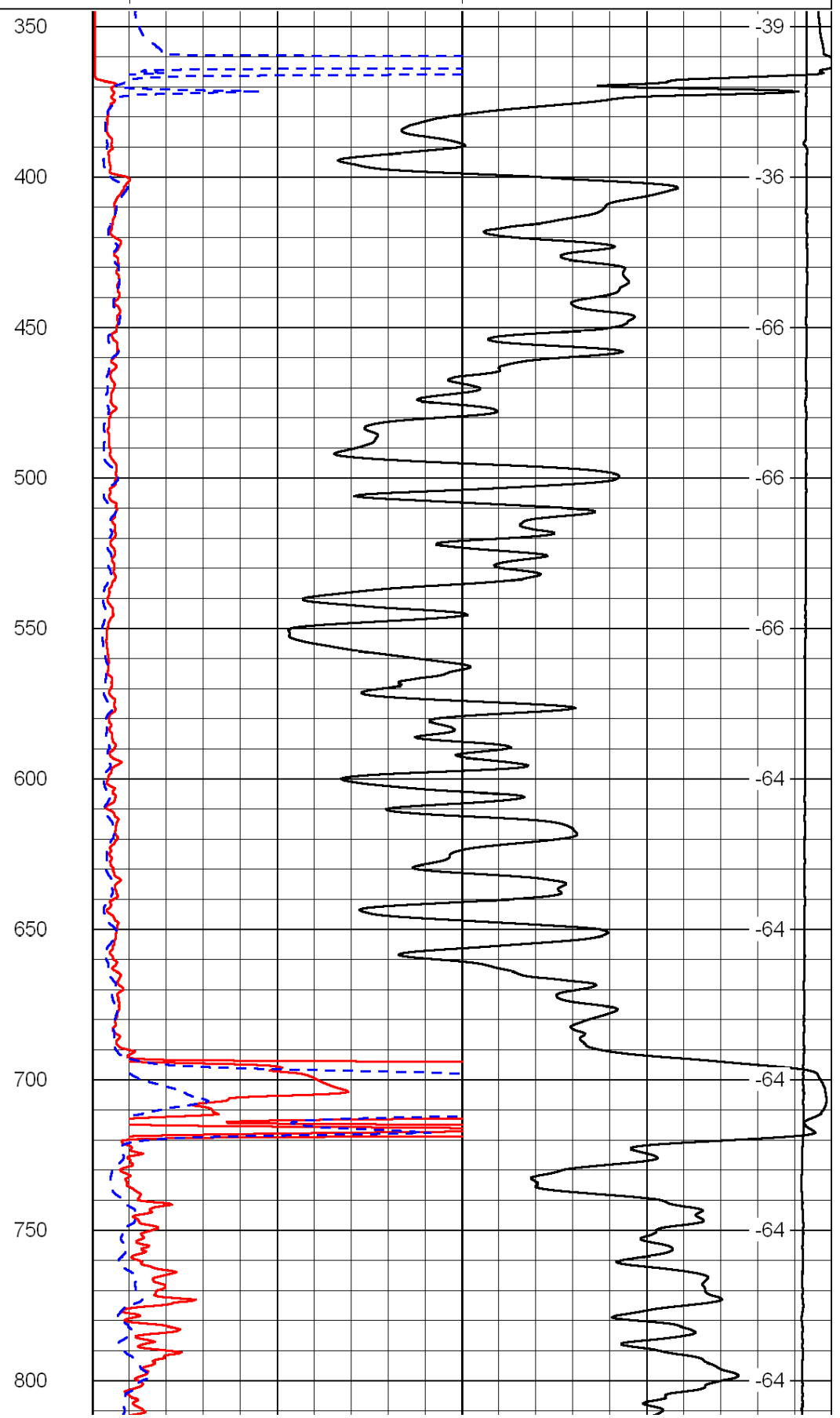
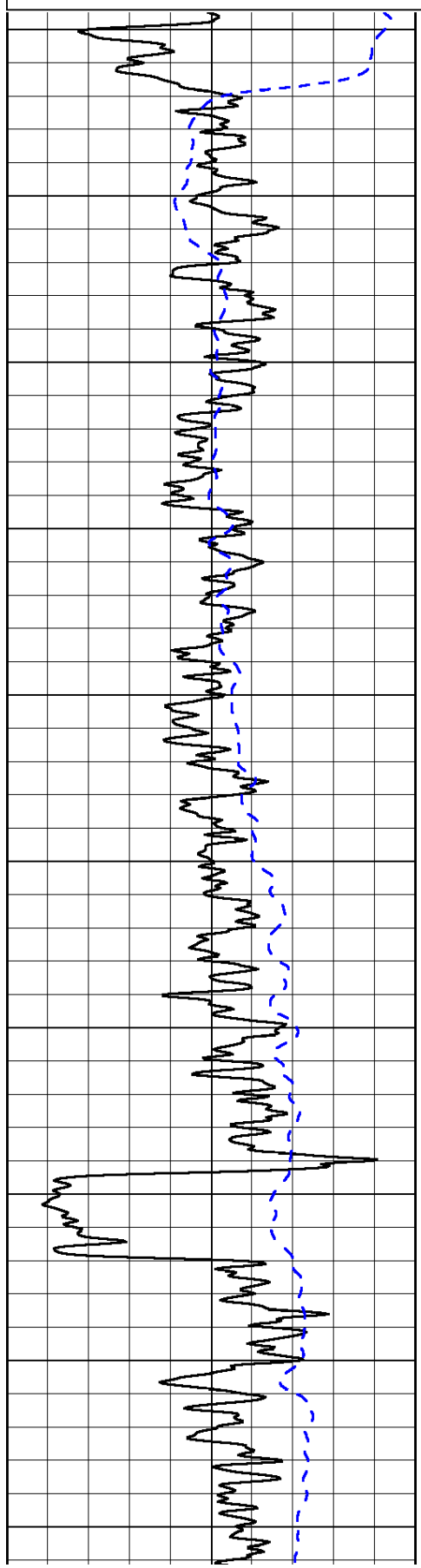
0	Gamma Ray	150
-200	SP (mV)	0

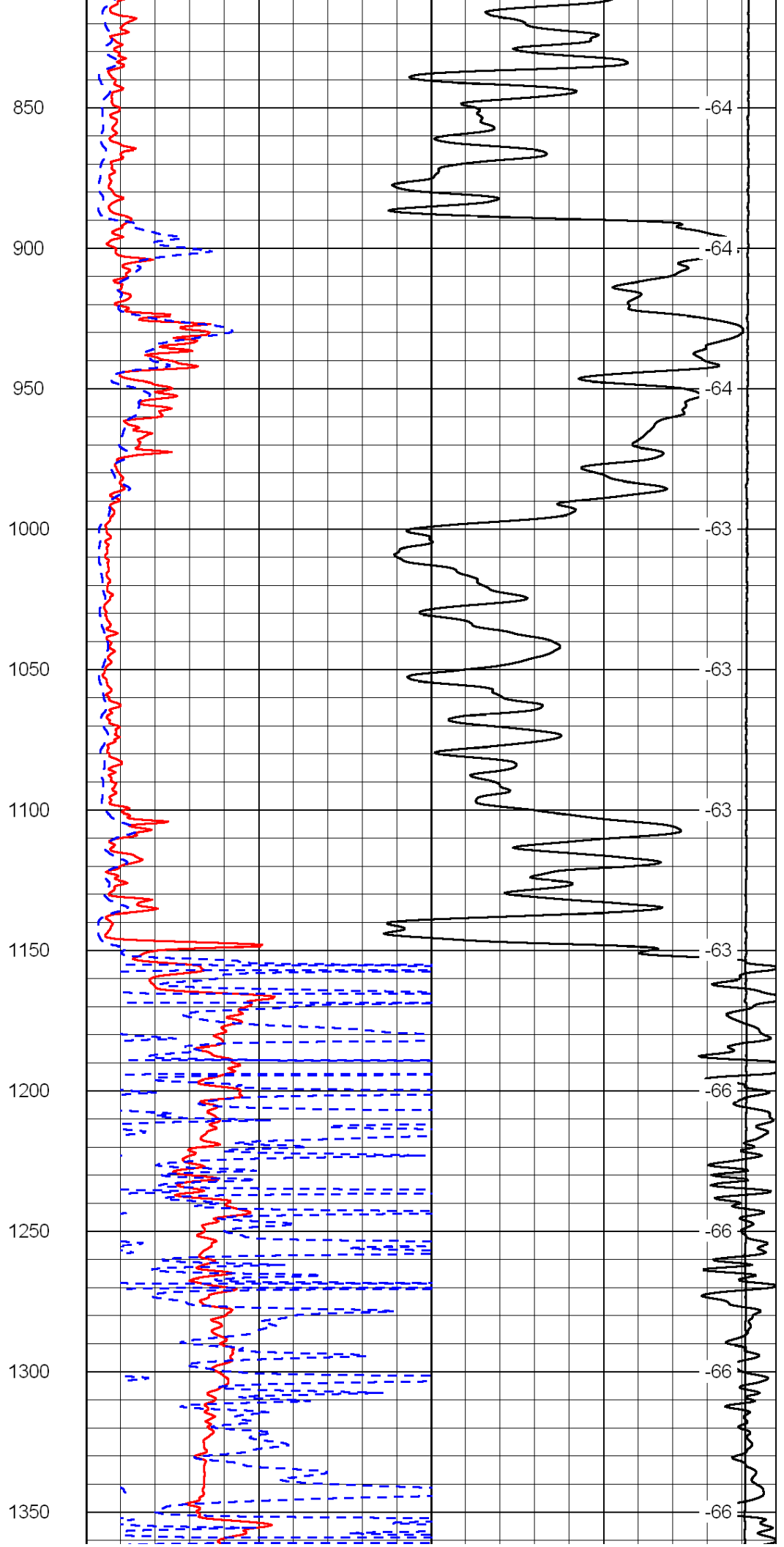
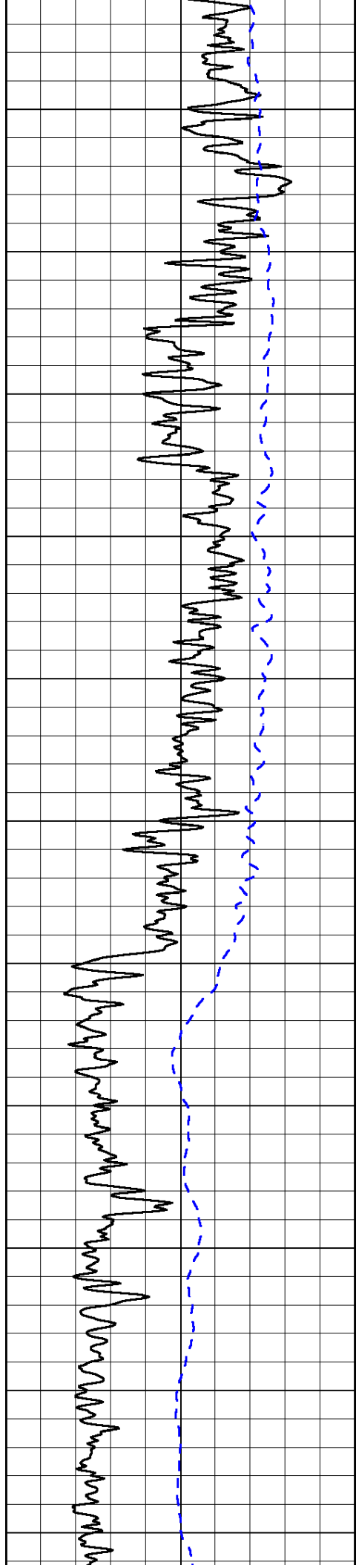
0	Shallow Resistivity	50
0	Deep Resistivity	50

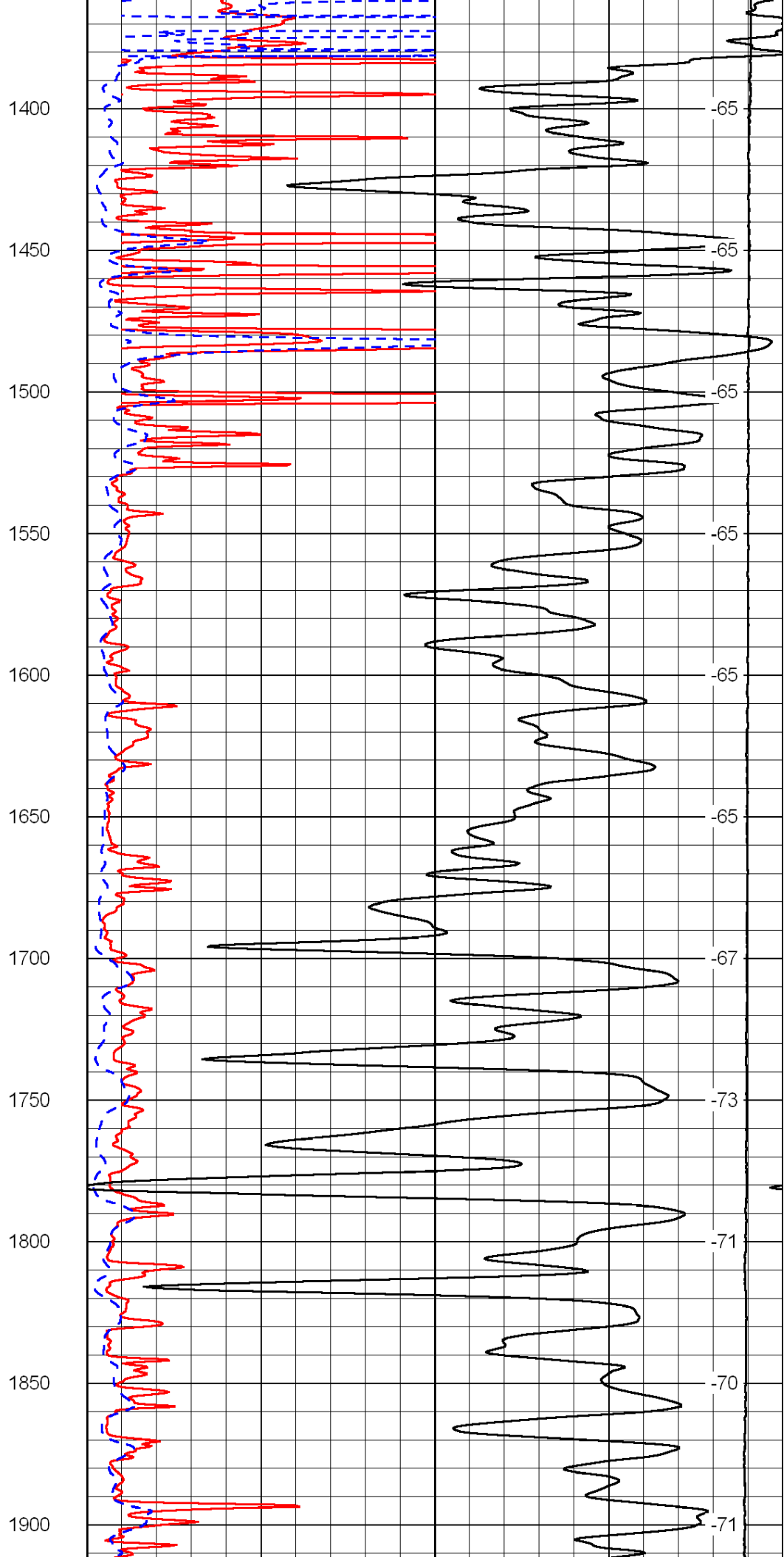
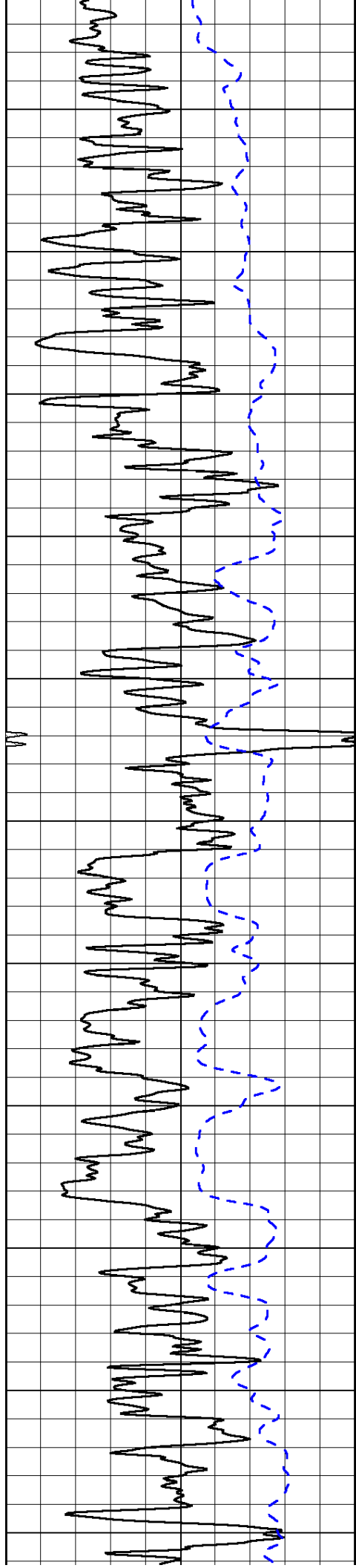
LSPD

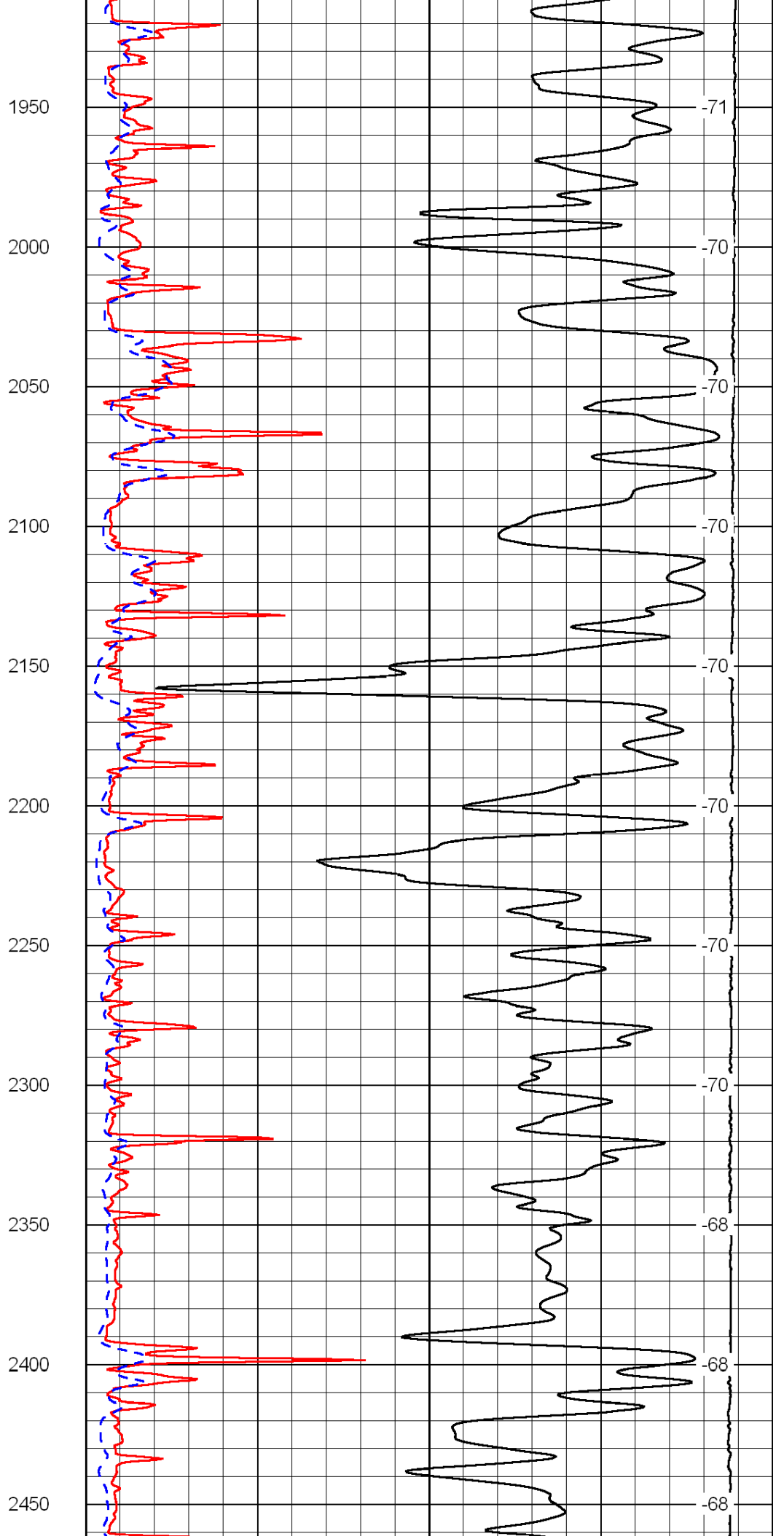
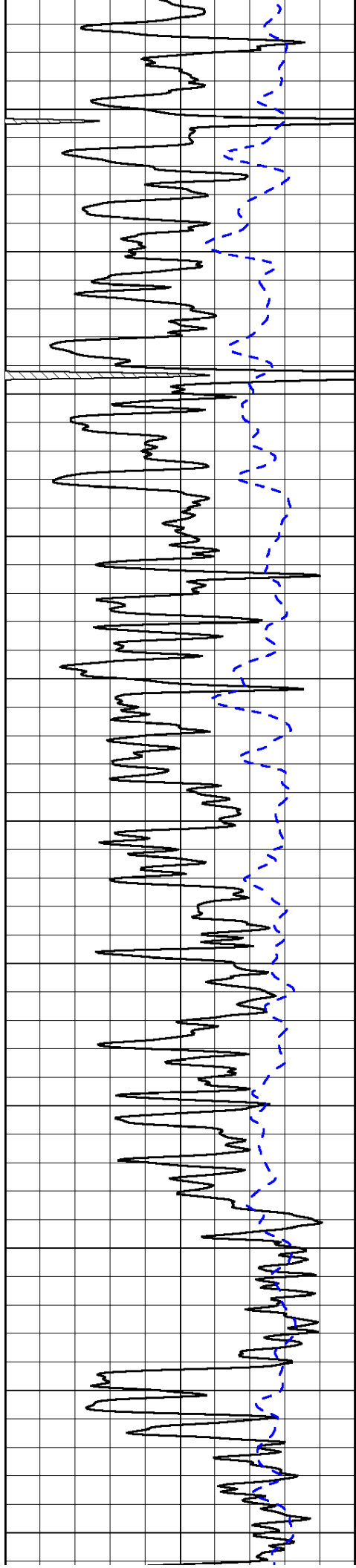
1000	Conductivity	0
15000	Line Tension	0

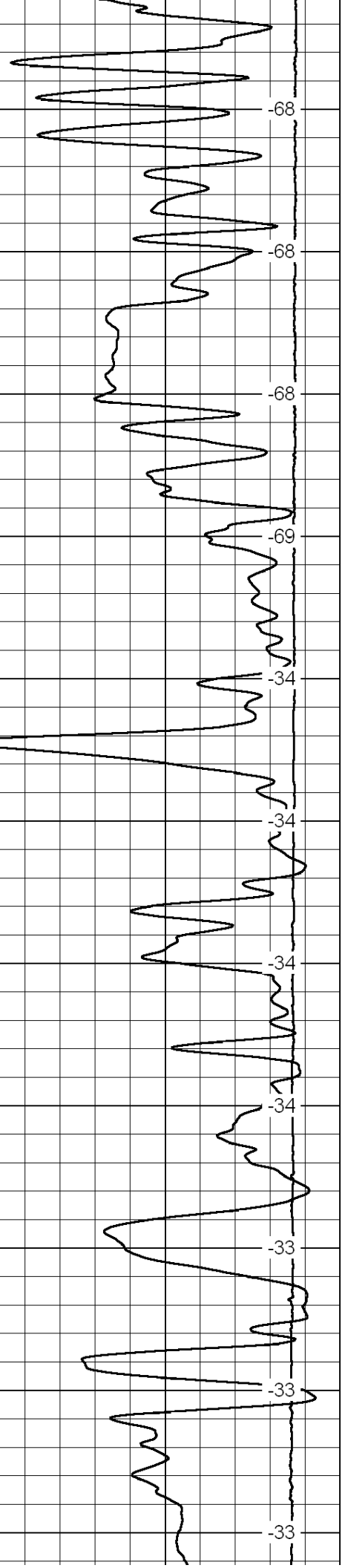
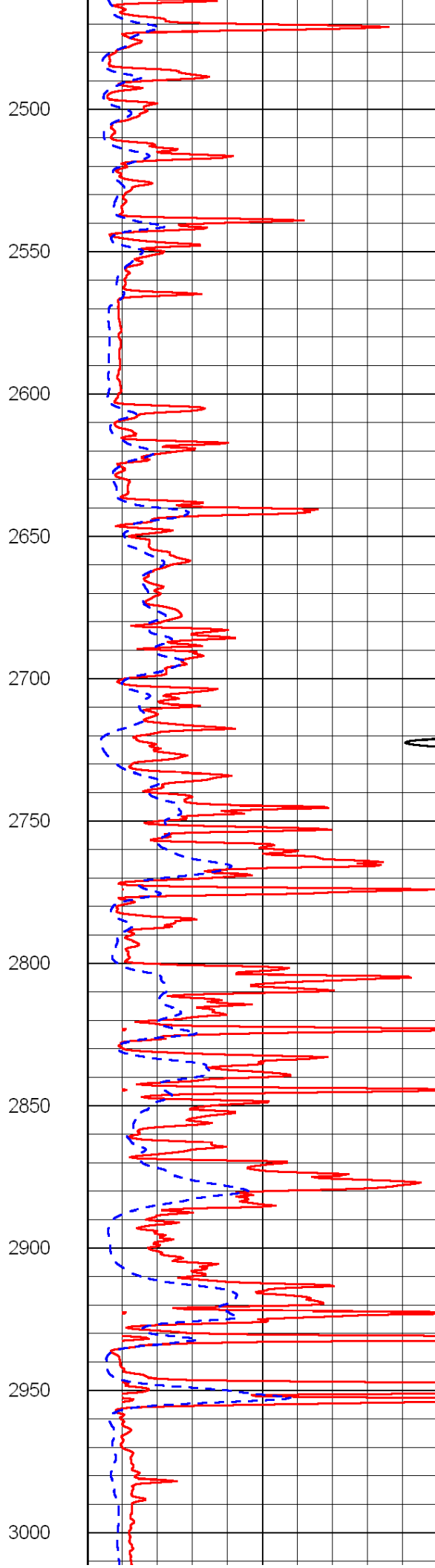
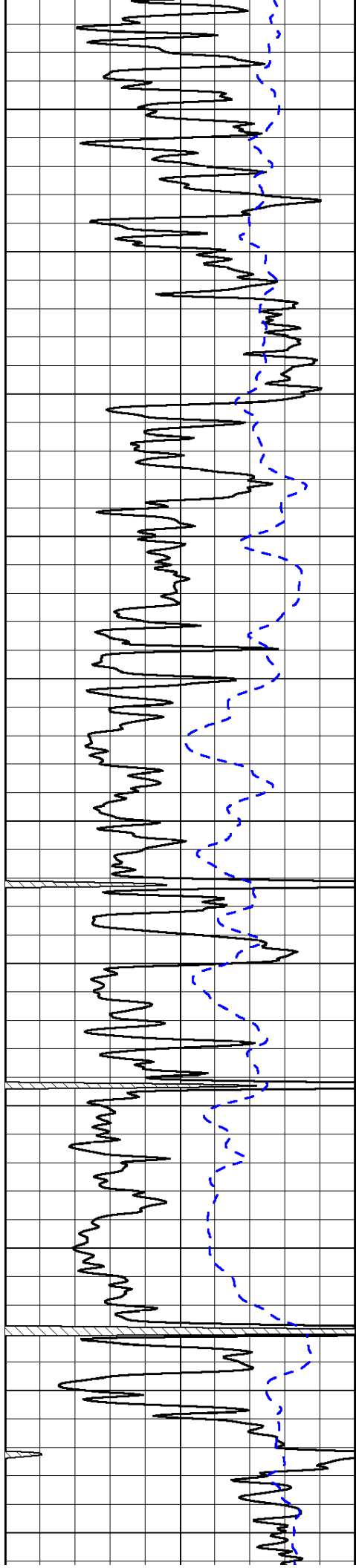
50	Shallow Resistivity	500
50	Deep Resistivity	500

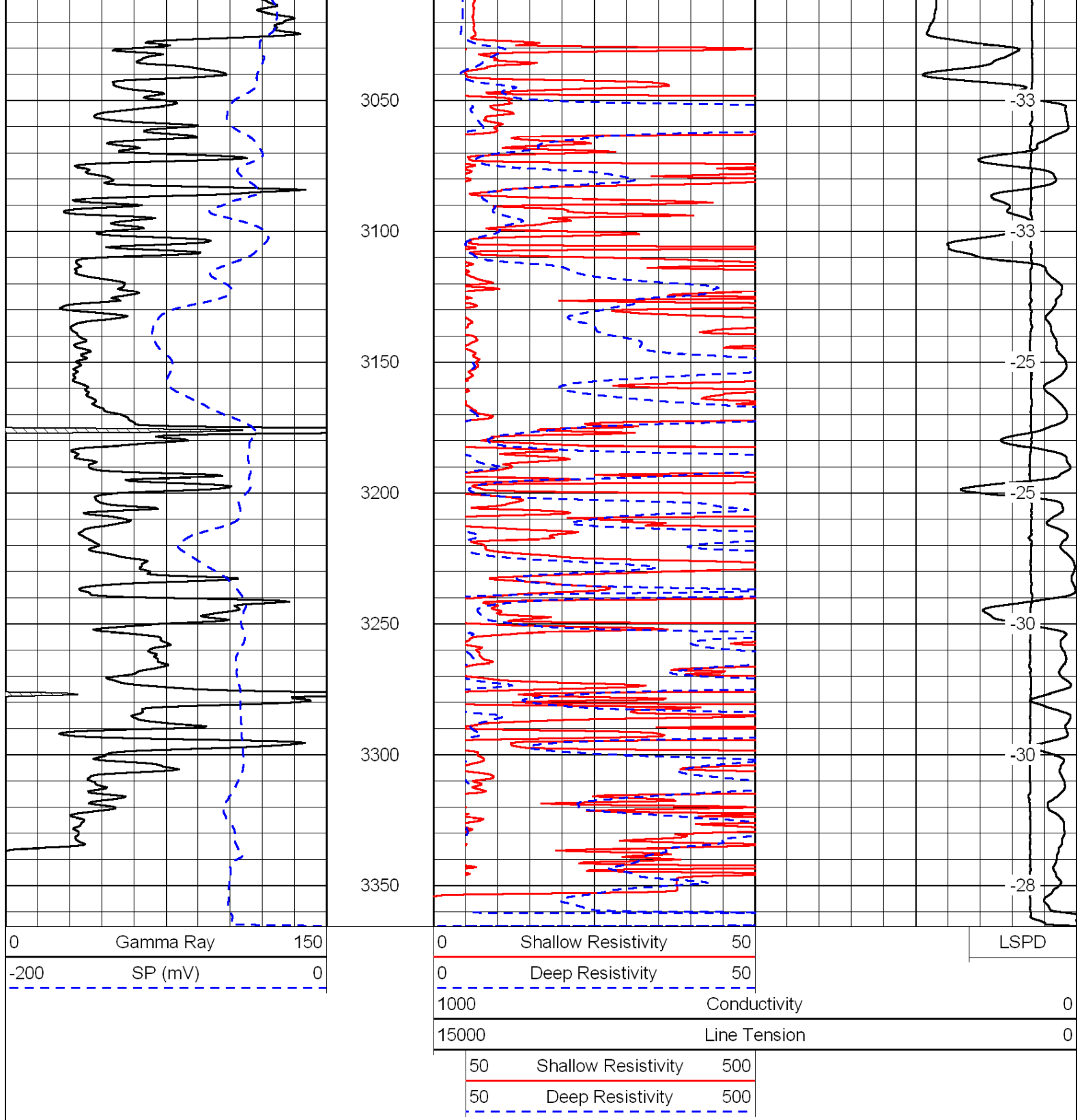




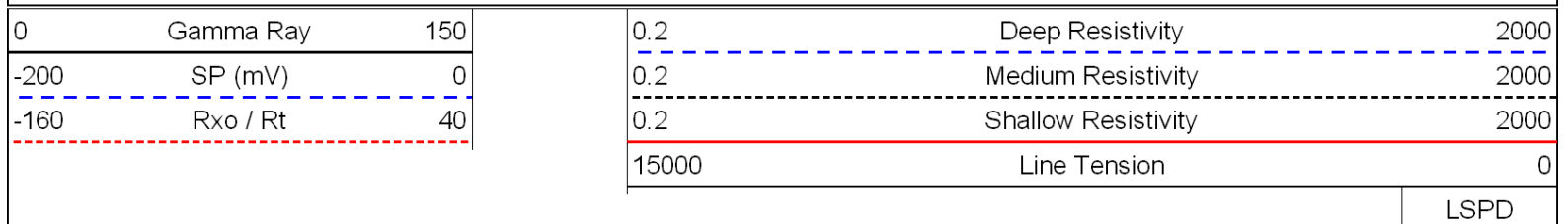


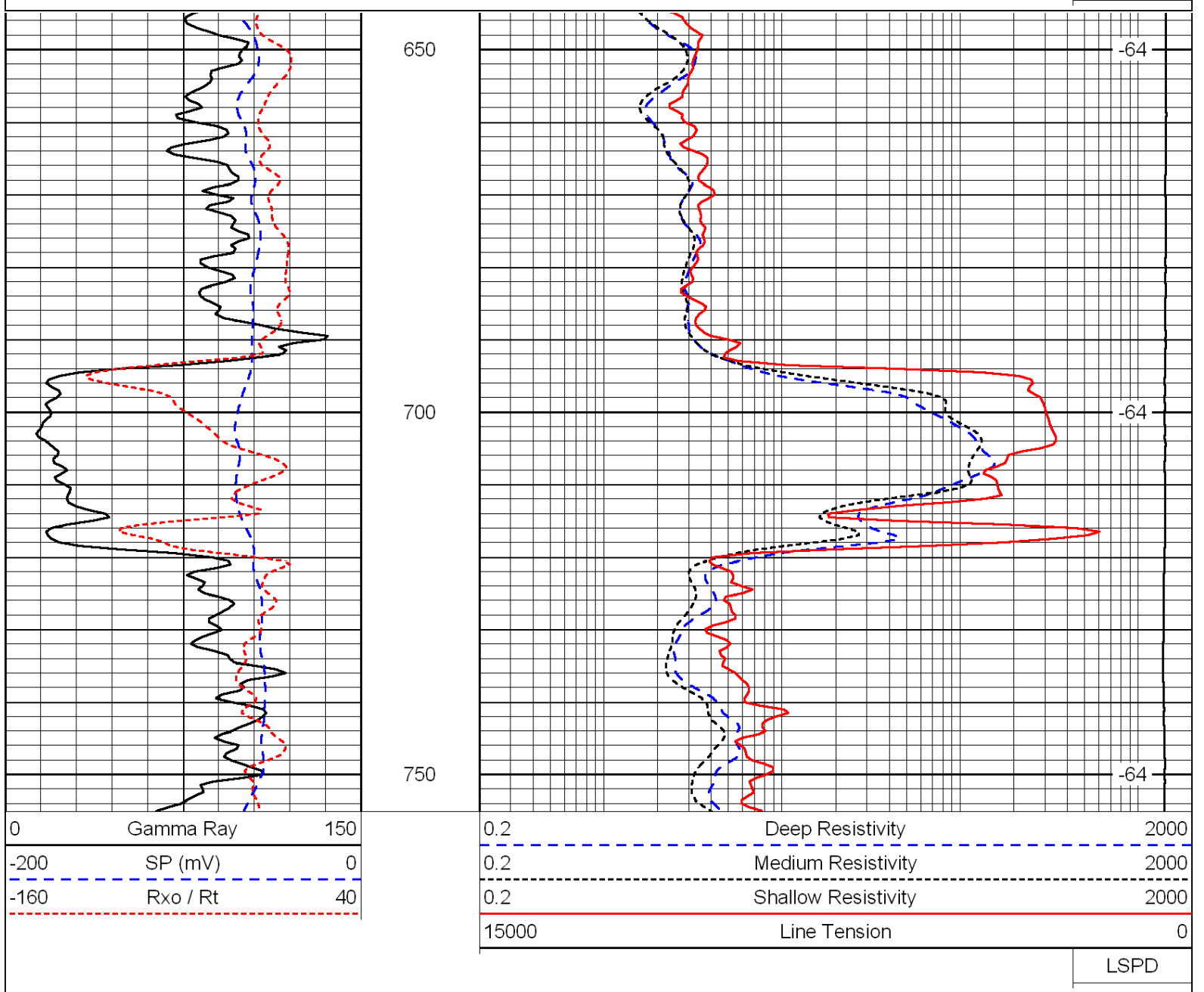




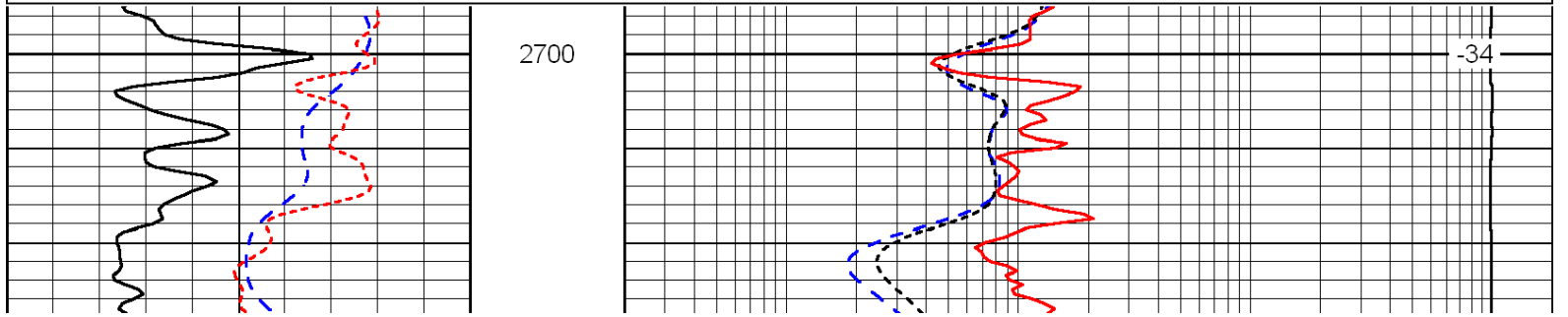
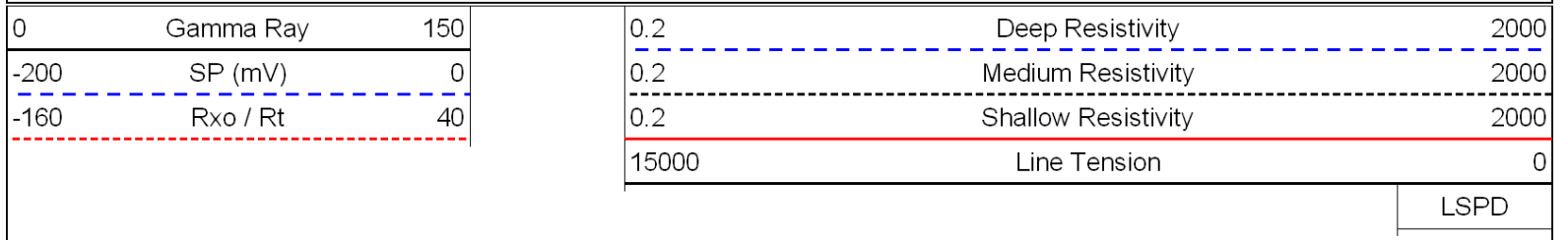


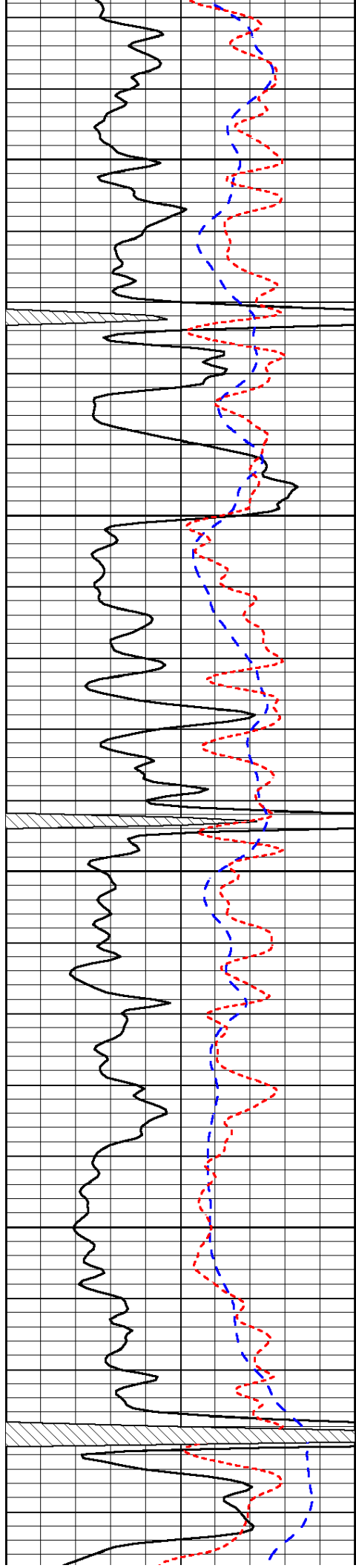
Database File: c:\warrior\data\reif_huslig no. 2\reif_huslig_2hd.db
 Dataset Pathname: DIL/reistk3
 Presentation Format: dil
 Dataset Creation: Wed Mar 23 16:45:31 2011
 Charted by: Depth in Feet scaled 1:240





Database File: c:\warrior\data\reif_huslig no. 2\reif_huslig_2hd.db
 Dataset Pathname: DIL/reistk3
 Presentation Format: dil
 Dataset Creation: Wed Mar 23 16:45:31 2011
 Charted by: Depth in Feet scaled 1:240



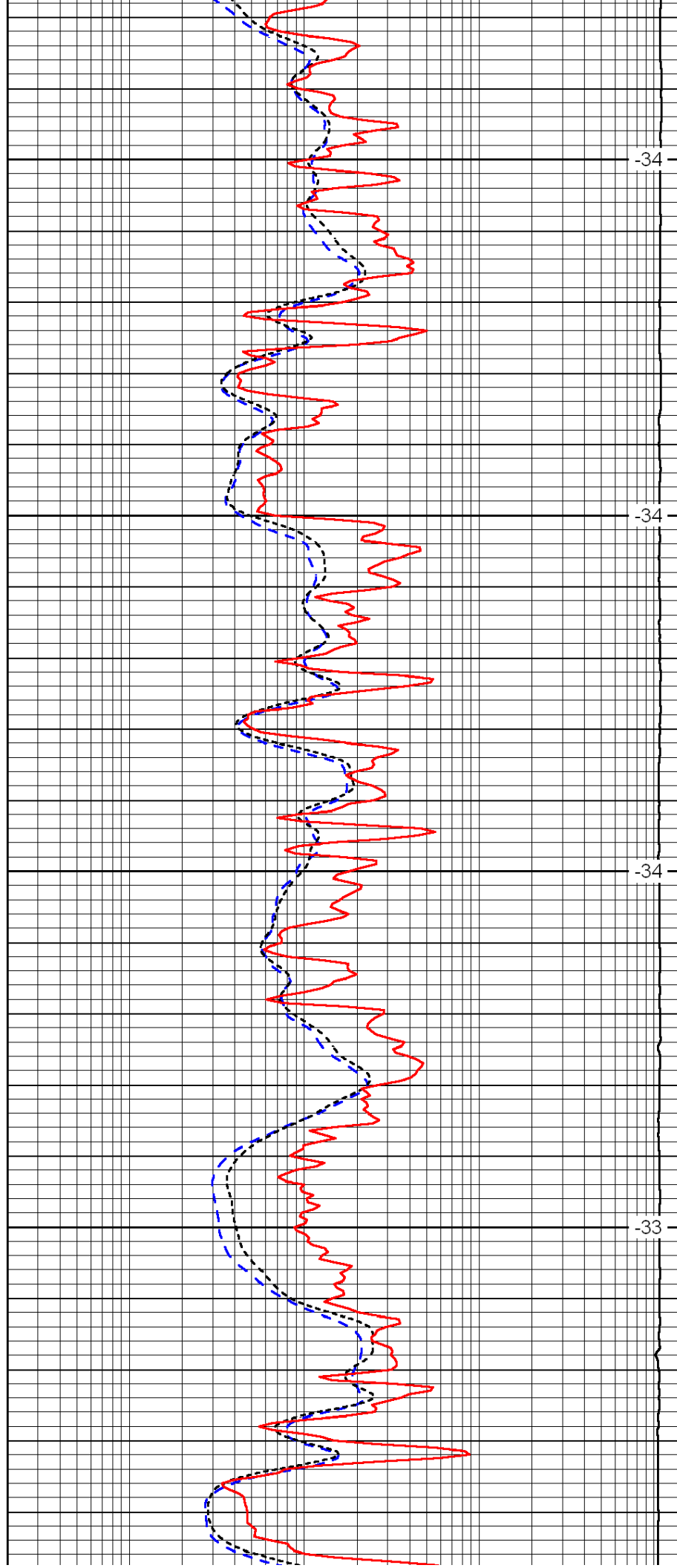


2750

2800

2850

2900

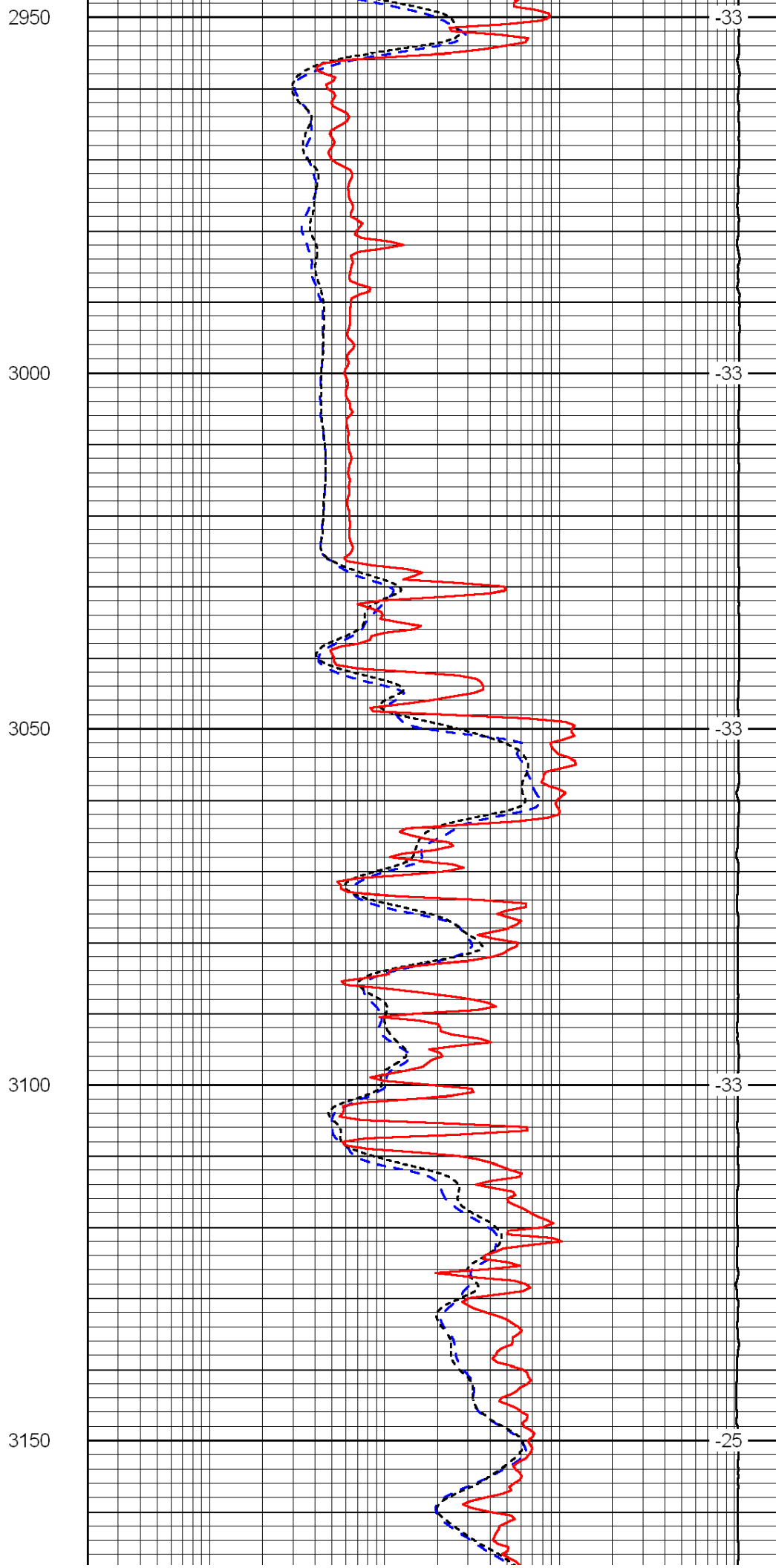
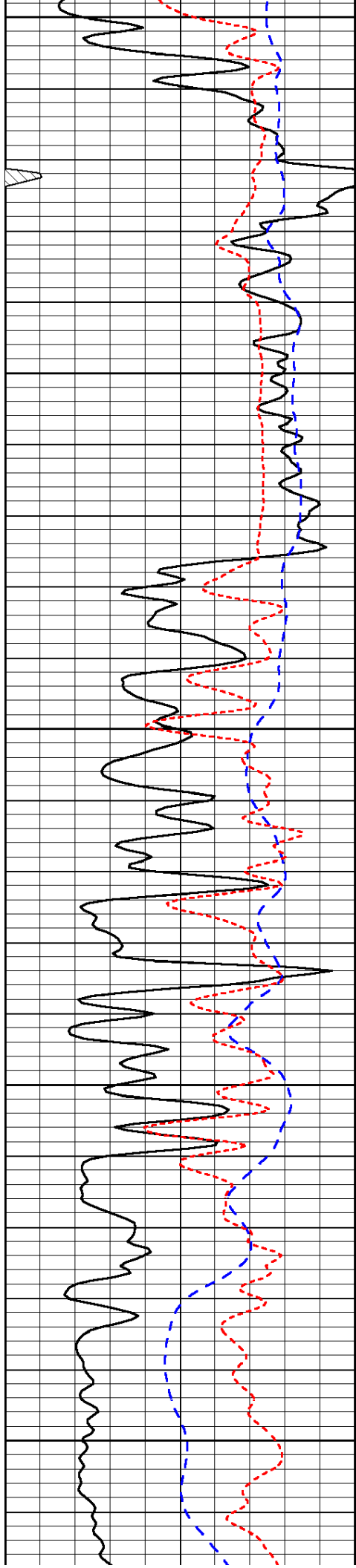


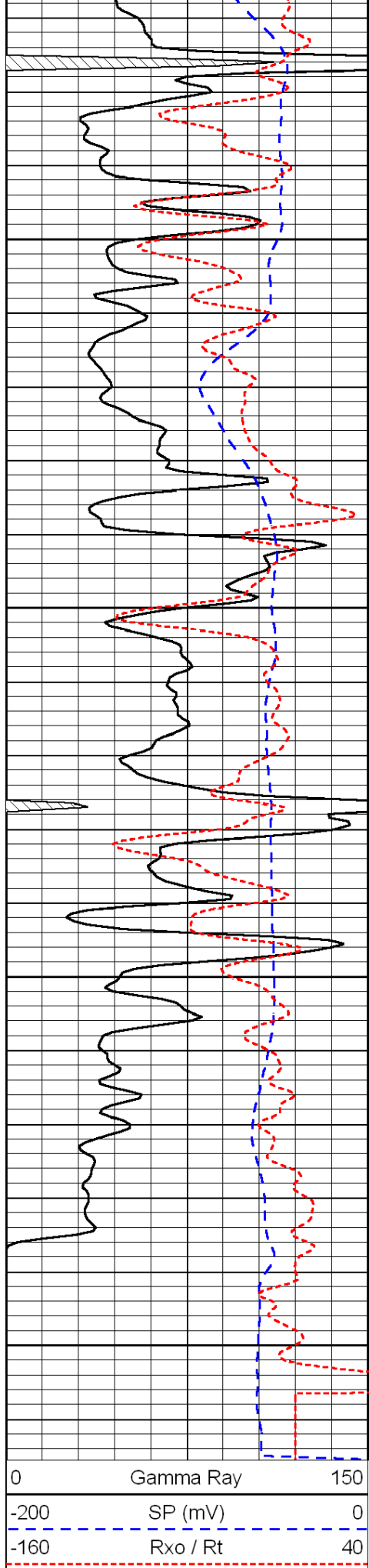
-34

-34

-34

-33





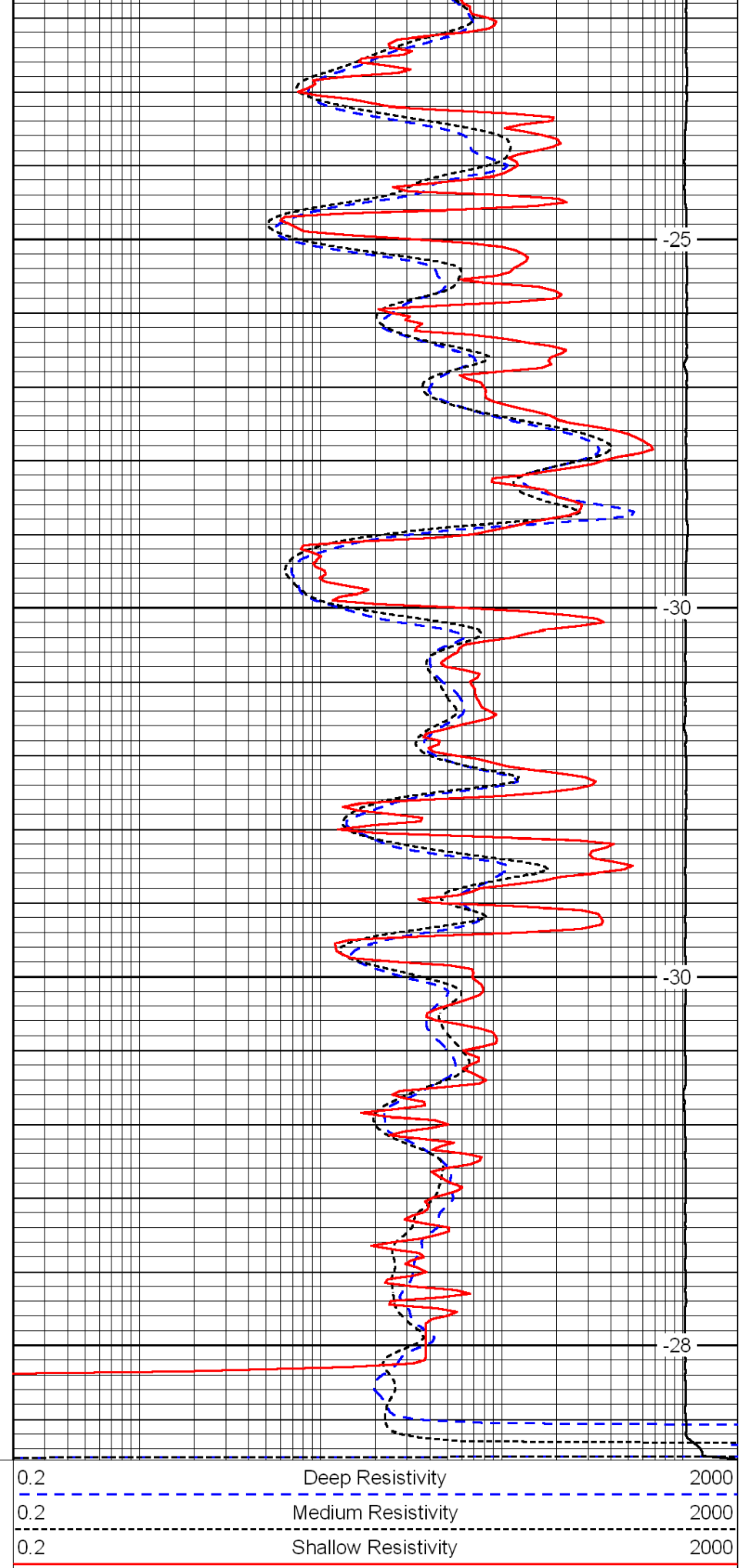
3200

3250

3300

3350

0	Gamma Ray	150
-200	SP (mV)	0
-160	Rxo / Rt	40



-25

-30

-30

-28

0.2	Deep Resistivity	2000
0.2	Medium Resistivity	2000
0.2	Shallow Resistivity	2000
15000	Line Tension	0

